



# **TROPICAL UPDATE**

**5 PM EDT**

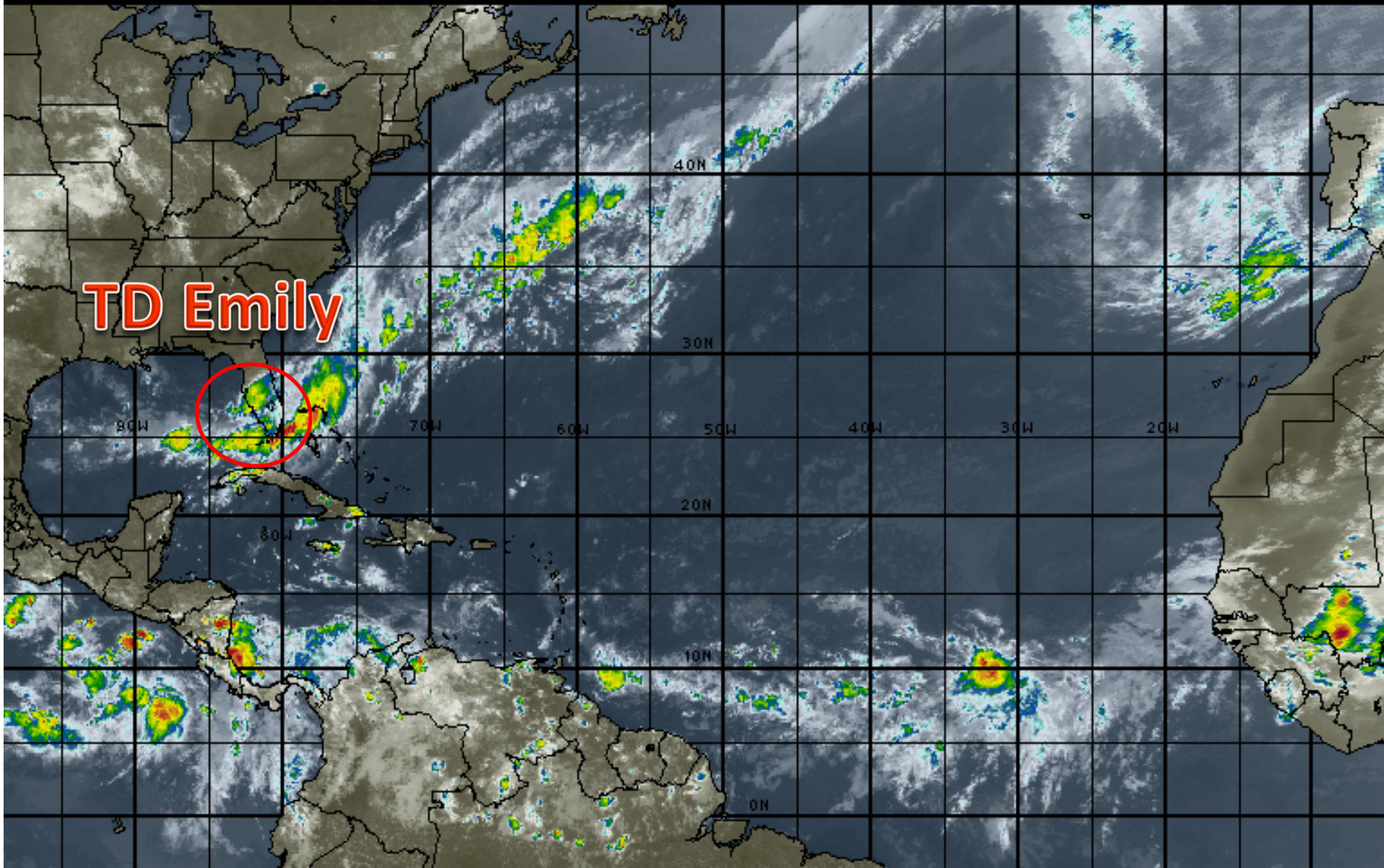
**Monday, July 31, 2017**

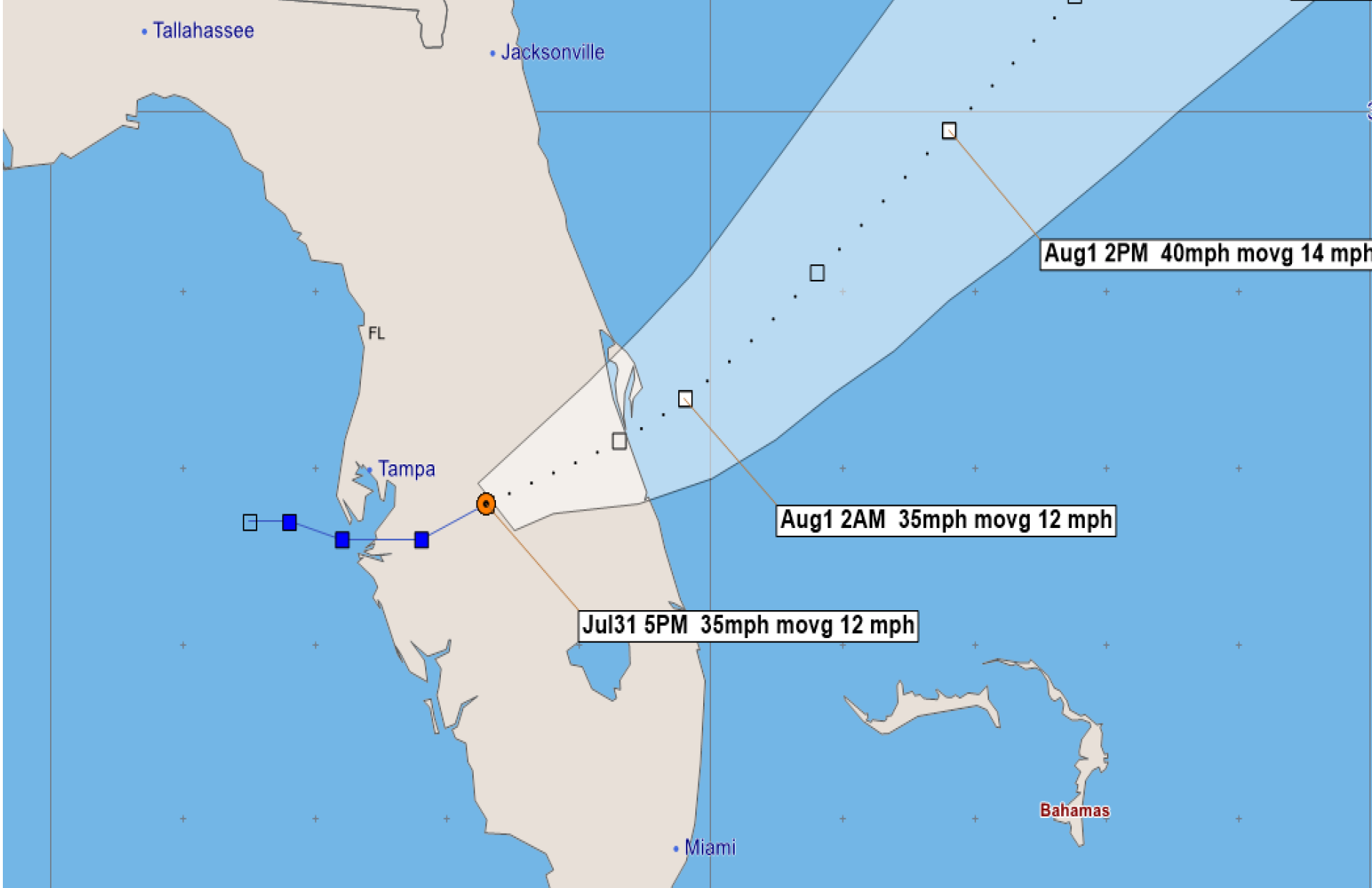
**Tropical Depression Emily**

**This update is intended for government and emergency response officials, and is provided for informational and situational awareness purposes only. Forecast conditions are subject to change based on a variety of environmental factors. For additional information, or for any life safety concerns with an active weather event please contact your County Emergency Management or Public Safety Office, local National Weather Service forecast office or visit the National Hurricane Center website at [www.nhc.noaa.gov](http://www.nhc.noaa.gov).**

# Atlantic Basin Satellite Image

18:00 31-JUL-2017 GMT Copyright © 1998-2016 MSI Corporation <http://www.wsi.com>



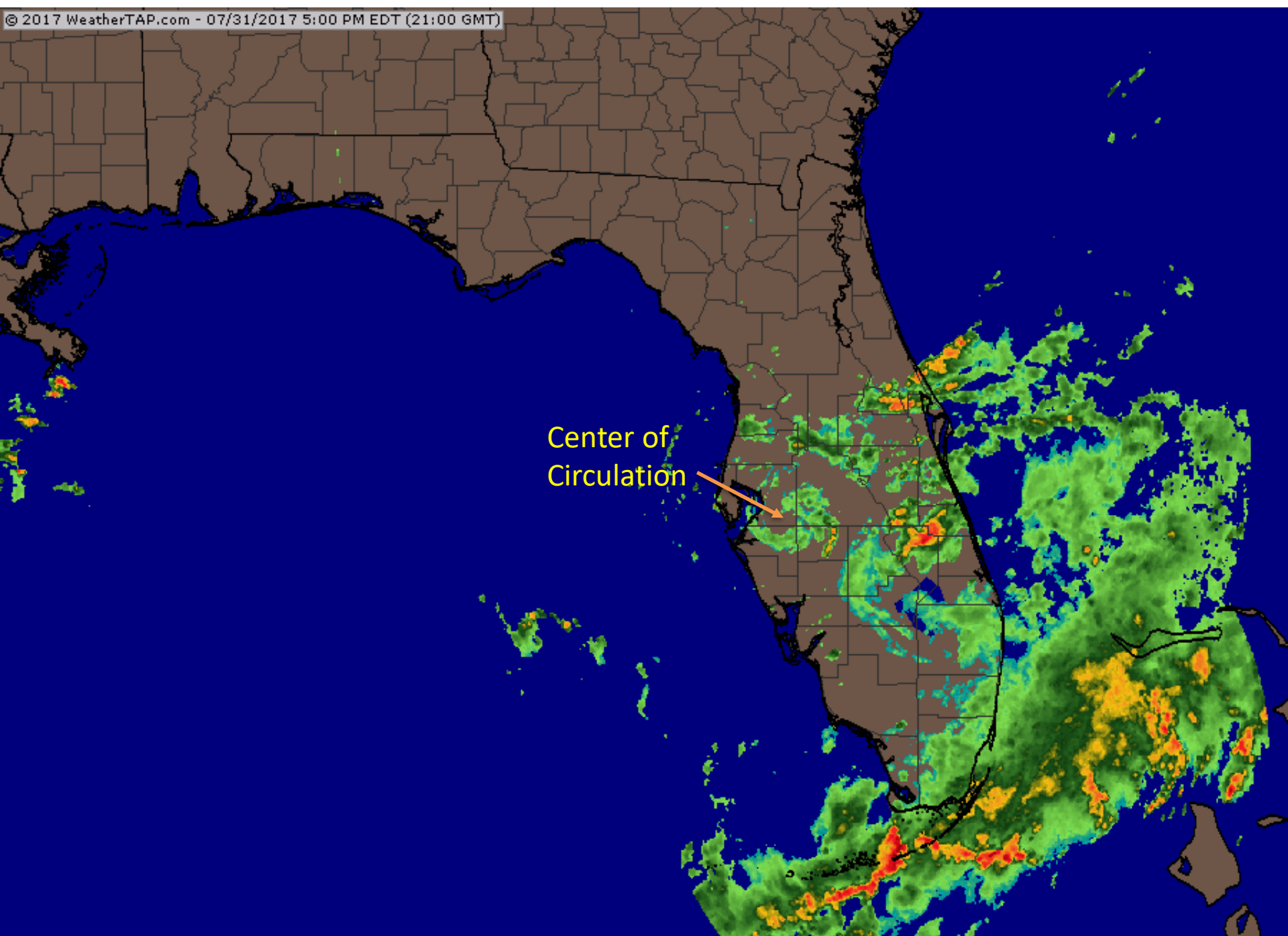


### Tropical Depression Emily - Monday, July 31, 2017 5 PM EDT Advisory #4

Center Location: 27.8 N 81.7 W Maximum Sustained Winds: 35 mph Movement: 12 mph ENE

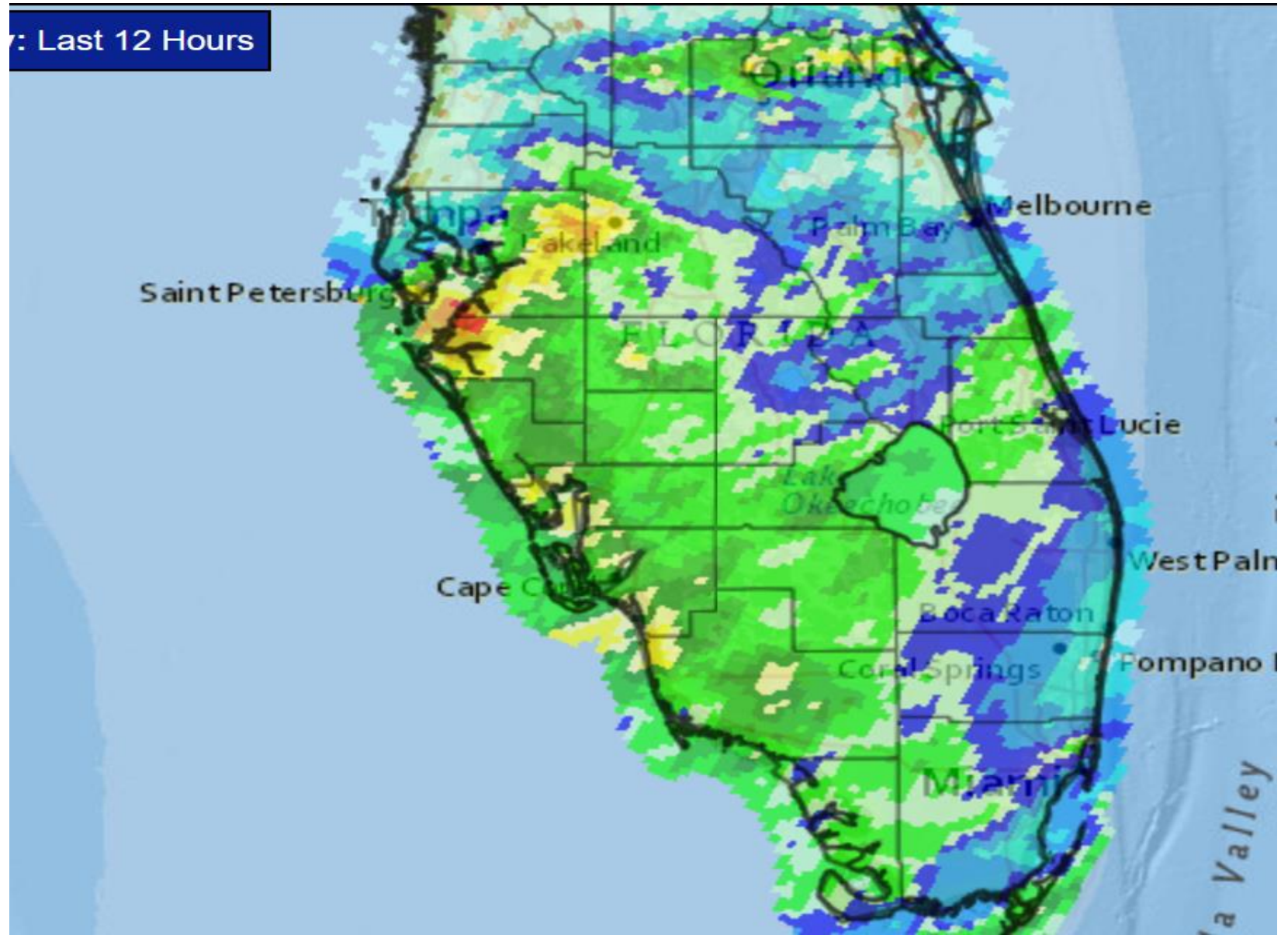
forecast positions Potential Track Area: day 1-3 day 4-5 Surface Wind Field: at current location

Sustained Wind Speeds: tropical storm  $\geq 34$ kt/39mph strong tropical storm  $\geq 50$ kt/58mph hurricane  $\geq 64$ kt/74mph





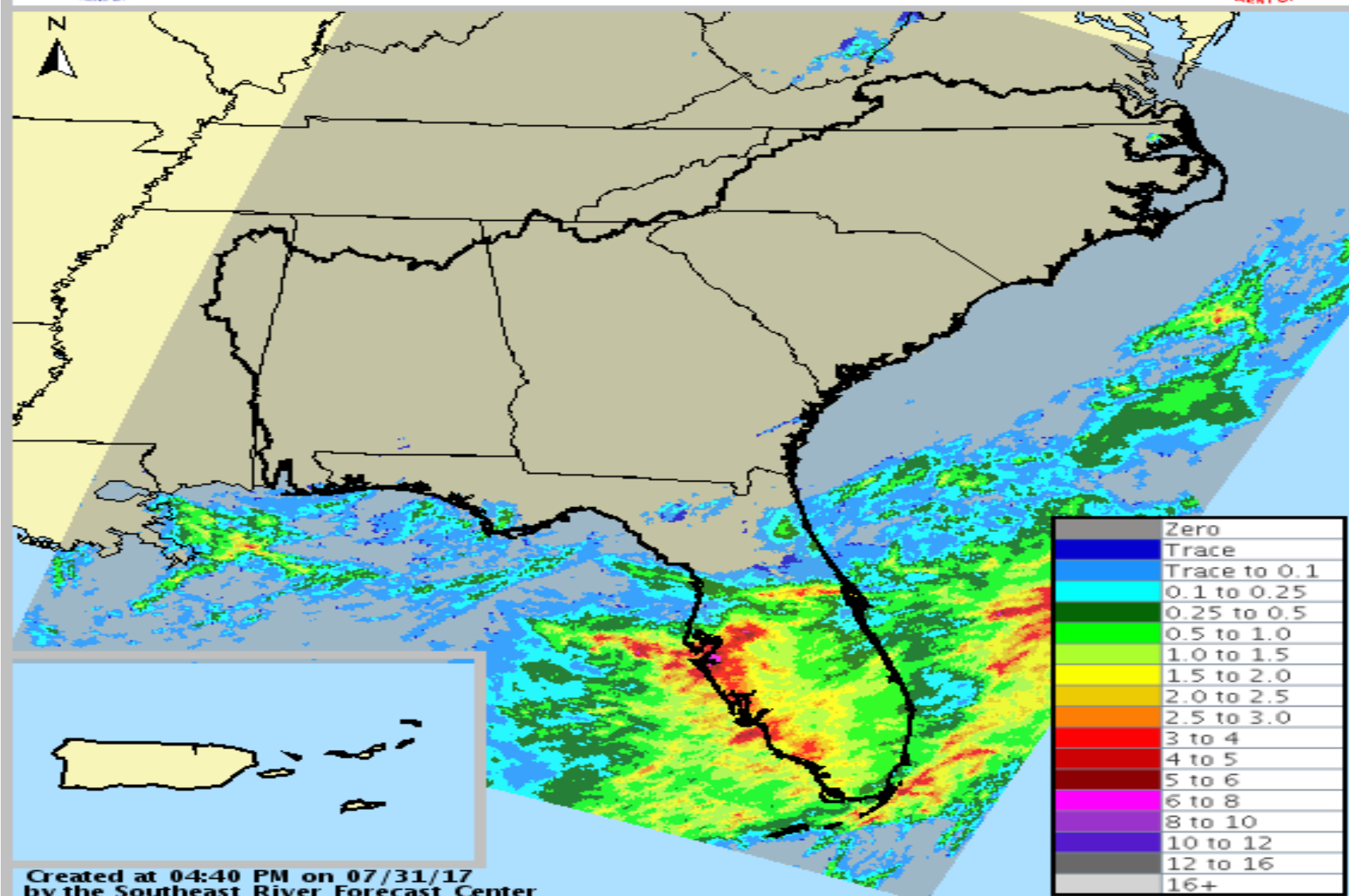
# Observed Rain (past 12 hours)





# 24-hour Precipitation

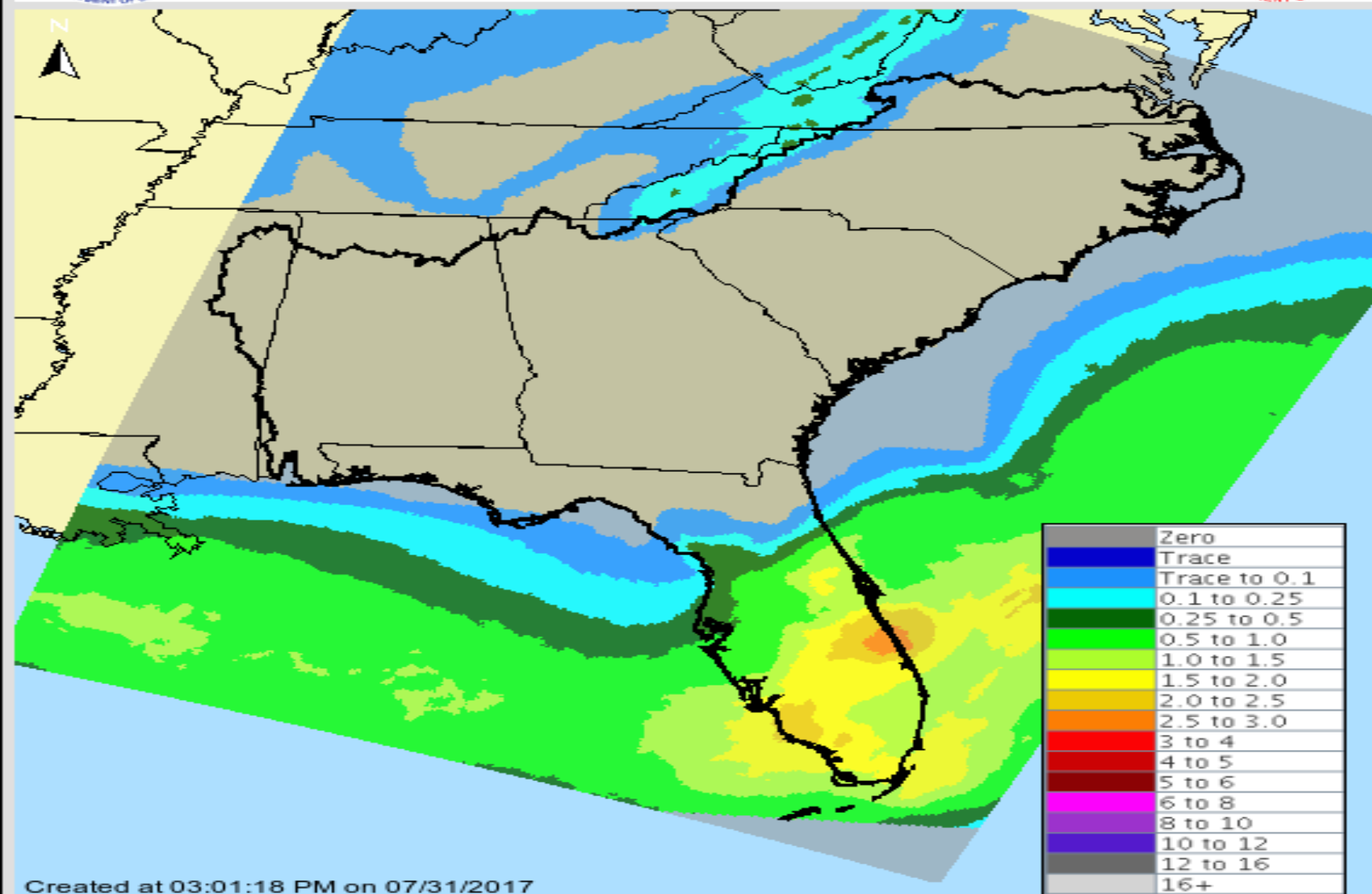
Ending Jul 31, 2017 at 4 pm





# 48 Hr Precipitation Forecast

Valid 2PM 07/31/2017 through 2PM 08/02/2017



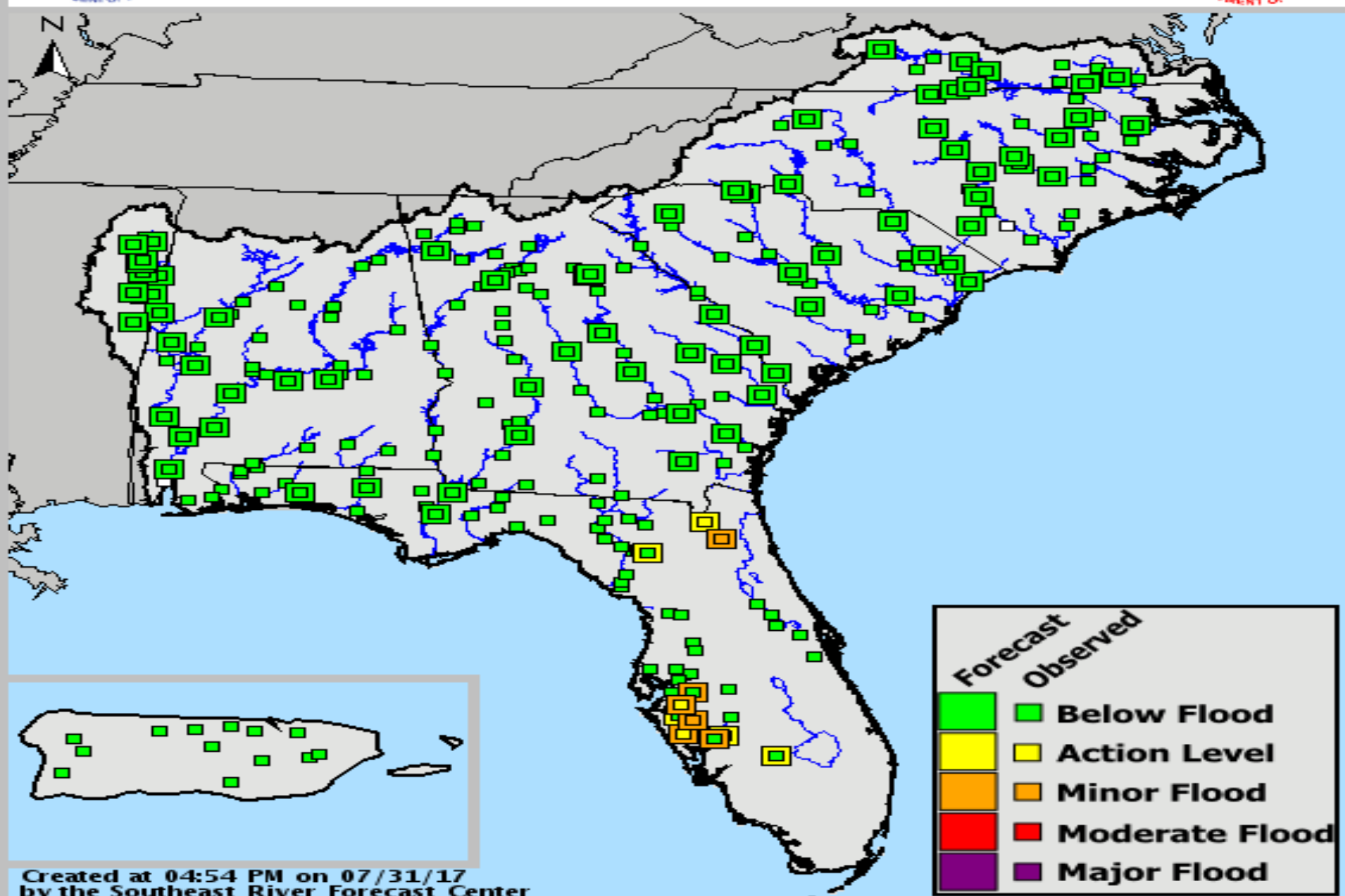
Created at 03:01:18 PM on 07/31/2017  
by the Southeast River Forecast Center



# SERFC River Conditions



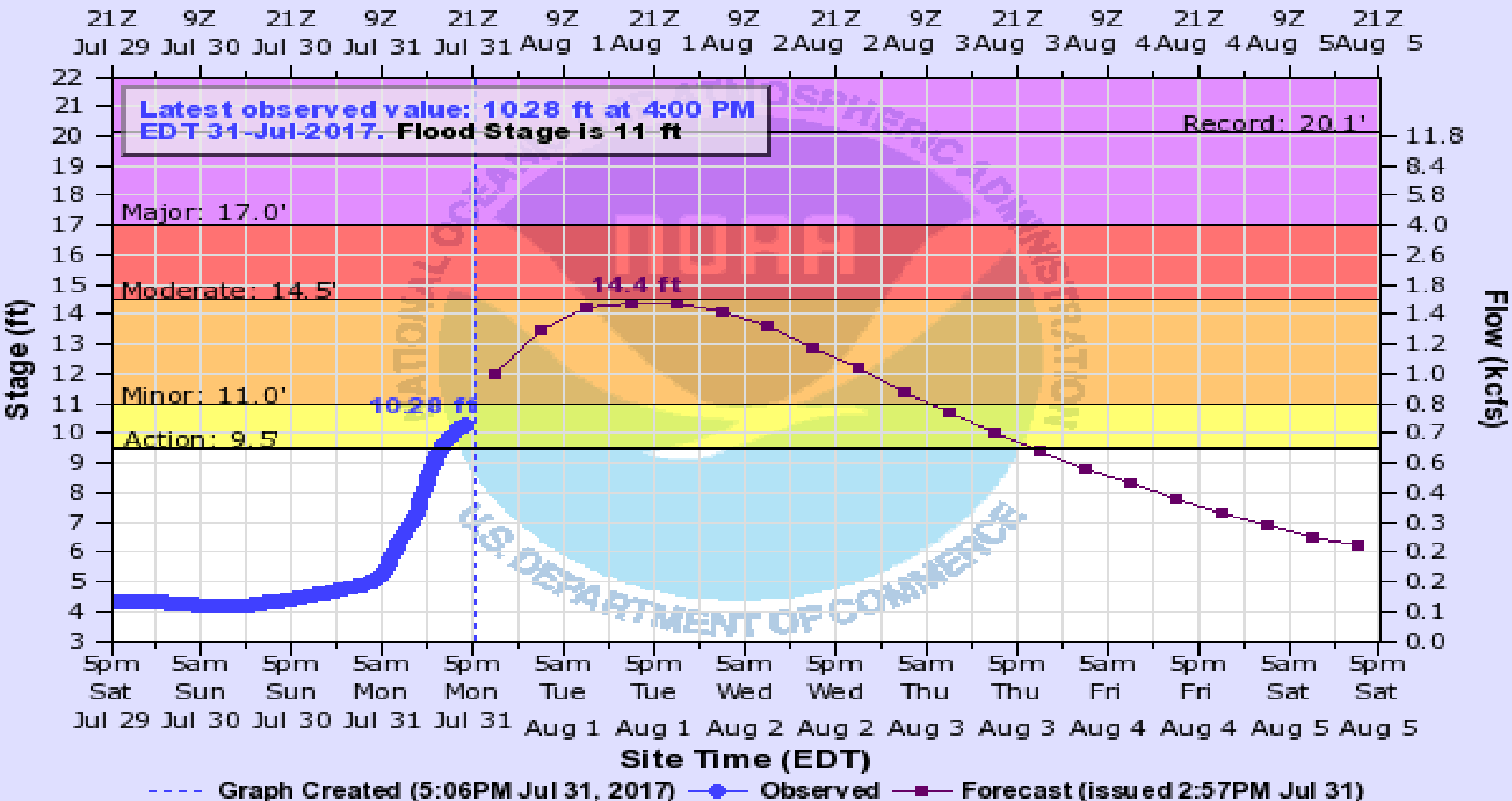
Valid: 07/31/2017 @ 04:54 PM





# LITTLE MANATEE RIVER (FL) AT WIMAUMA

Universal Time (UTC)



WIMF1(plotting HGIRG) "Gage 0" Datum: 0.88'

Observations courtesy of US Geological Survey

## Possible impacts

14.5

Flooding of several houses begins near 32nd and 33rd streets in Ruskin.

13

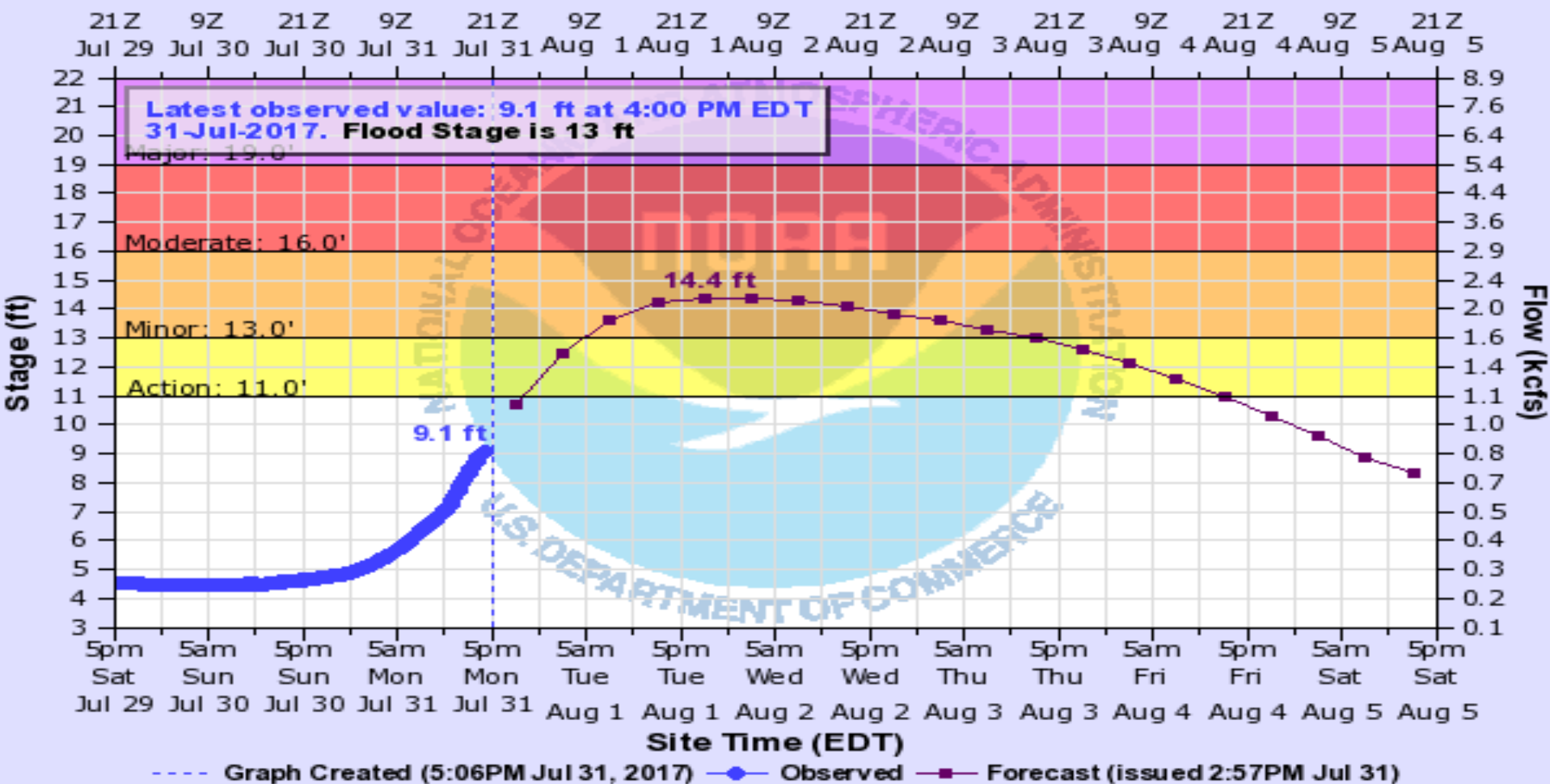
The canoe rental area floods.

11

The river overflows its banks.

# ALAFIA RIVER (FL) AT LITHIA

Universal Time (UTC)



LITF1(plotting HGIRG) "Gage 0" Datum: 6.04'

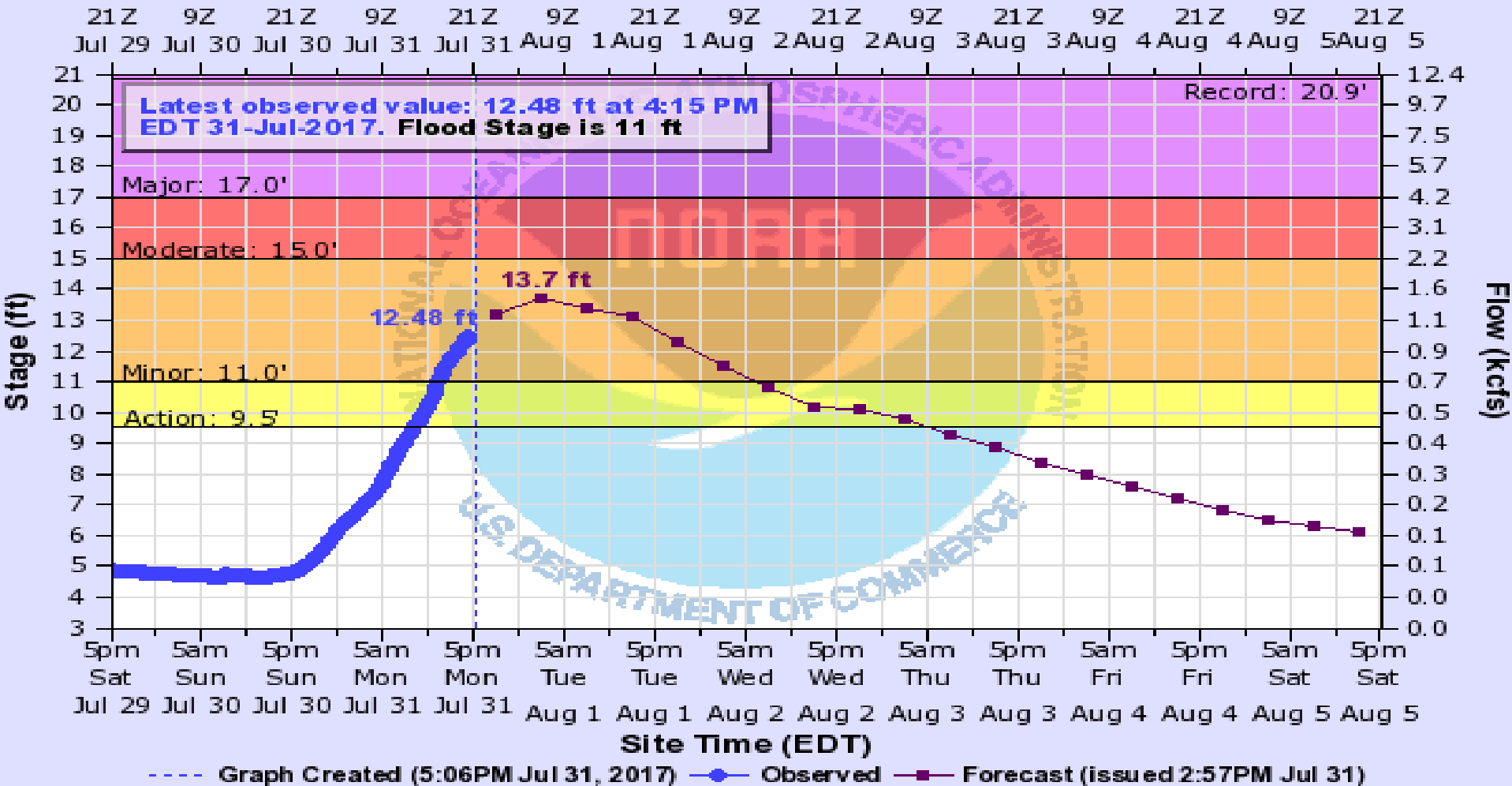
Observations courtesy of US Geological Survey

## Possible impacts

- 15 Additional residences downstream of State Road 640 bridge begin flooding.
- 13 River Drive and Squirrel Run Way downstream of State Road 640 are completely covered by water. One home begins to flood.
- 12 Water begins to affect River Drive and Squirrel Run Way downstream of State Road 640.

# MANATEE RIVER (FL) AT MYAKKA HEAD

Universal Time (UTC)



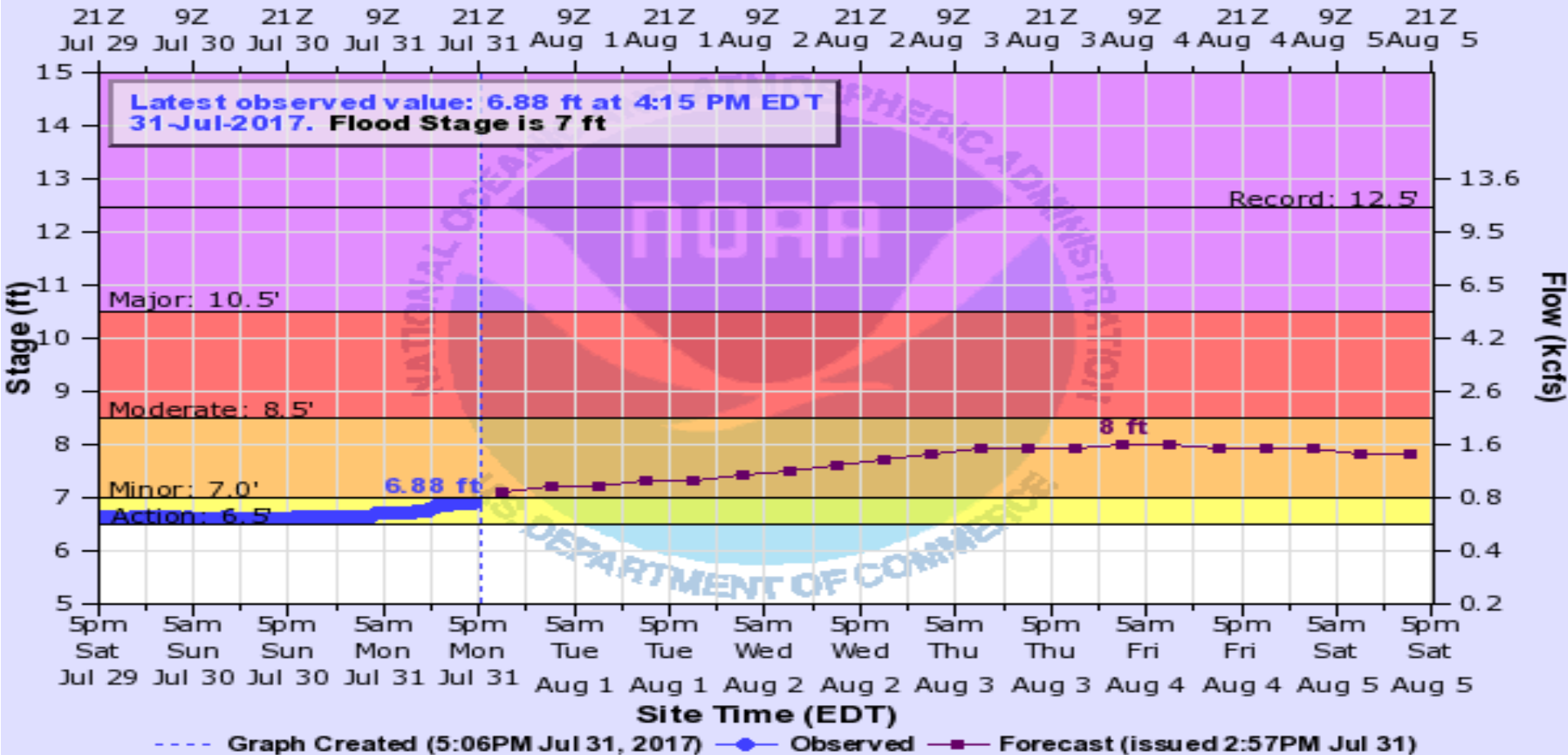
MKHF1(plotting HGIRG) "Gage 0" Datum: 40.93'

Observations courtesy of US Geological Survey

## Possible impacts

- 15 Low sections of State Road 64 start to flood.
- 11 Private road and bridge 1 mile downstream flood. Agricultural, rural Kibler area begins to flood.

### Universal Time (UTC)



MKCF1(plotting HGIRG) "Gage 0" Datum: 7.92'

Observations courtesy of US Geological Survey

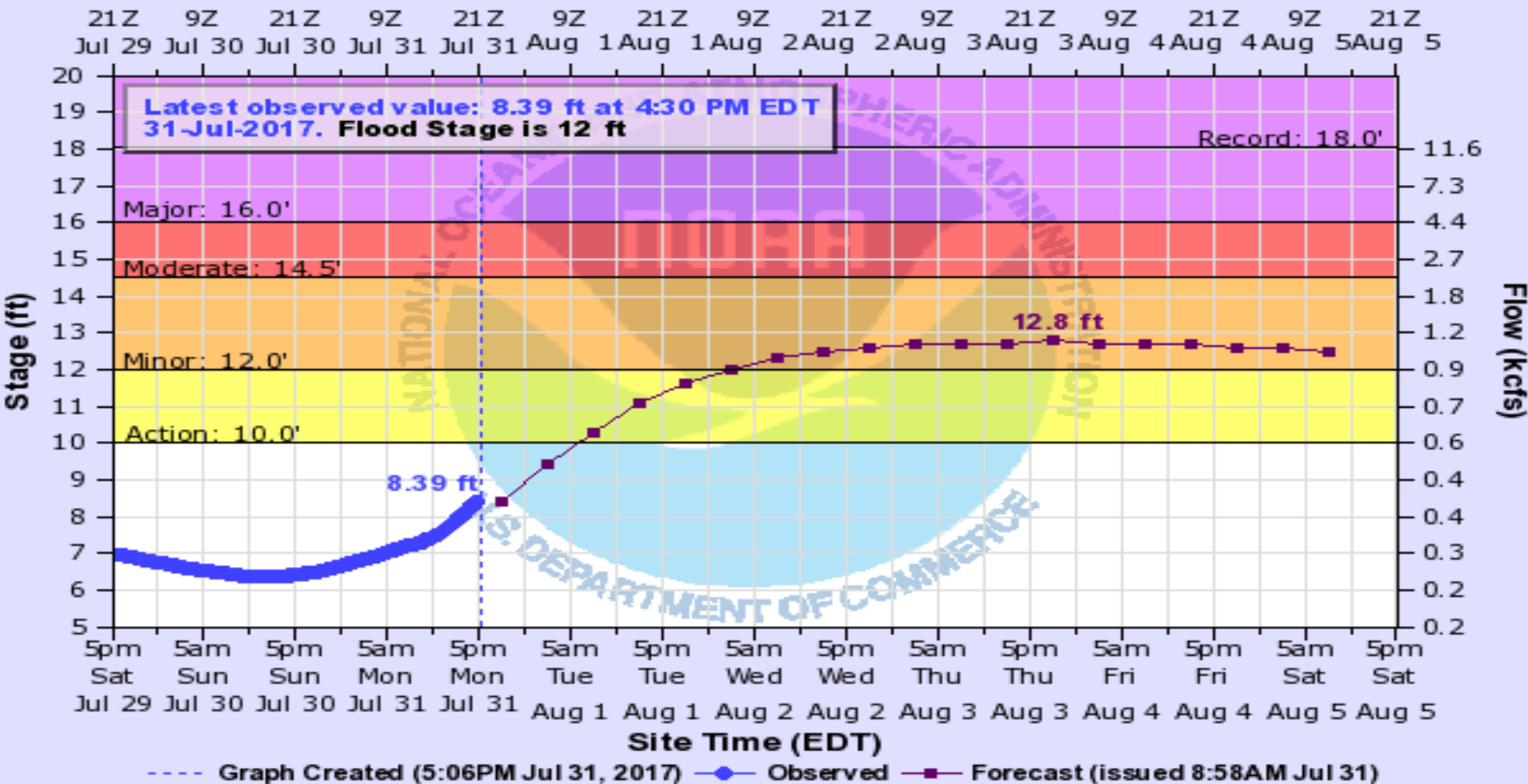
# Possible impacts

8.5	Most of Myakka State Park is closed.
8	The main road at Myakka State Park floods.
7	Trails, picnic areas, and parking lots at Myakka State Park flood.



**HORSE CREEK (FL) NEAR ARCADIA**

### Universal Time (UTC)



ARHF1(plotting HGIRG) "Gage 0" Datum: 10.96'

Observations courtesy of US Geological Survey

# Possible impacts

12

The access road to Hidden Acres is impassable.

11

## Secondary roads in hidden acres and royal palm

begin to flood.

## 10.5

Two homes become isolated.

# Summary

- At 5pm EDT Monday, Tropical Storm Emily was downgraded to a tropical depression with winds near 35mph while located about 30 miles northwest of Sebring
- T.D. Emily is moving east-northeast near 12 mph, and the center should exit the Florida East Coast near Melbourne/Cape Canaveral area by midnight.
- Emily is forecast to become a tropical storm once it moves into the Atlantic, but it should be well east of Florida when that occurs and no additional direct impacts are expected.

## Florida Outlook:

- **All Tropical Storm Warnings** for Florida have been discontinued.
- Rainfall amounts during the past 24 hours generally range from 3-6 inches along coastal West Central and Southwest Florida and 1-3 inches elsewhere (except near Orlando). Isolated areas near Lakeland and Bradenton are estimated to have received as much as 6-8”.
- An additional 1-2” of rain is forecast for Central and South Florida tonight and into Tuesday.
- The **Flood Watch** has been cancelled for Pinellas, Hillsborough, Manatee, Sarasota, Hardee, DeSoto, Highlands, Charlotte and Lee Counties, but remain in effect for Collier, Glades and Hendry Counties.
- In addition to the urban flood threat, minor river flooding may also occur over the next several days.
- Tides may continue to run as much as 1 foot above normal, but no significant coastal flooding or erosion is expected.

Another briefing packet will be issued Tuesday morning. For more information on this system, visit the NHC website at [www.nhc.noaa.gov](http://www.nhc.noaa.gov)



# TROPICAL UPDATE

Created by:

Amy Godsey, Chief State Meteorologist  
[amy.godsey@em.myflorida.com](mailto:amy.godsey@em.myflorida.com)

State Meteorological Support Unit  
Florida Division of Emergency  
Management

Users wishing to subscribe (approval pending) to this distribution list, register at [https://public.govdelivery.com/accounts/FLDEM/subscriber/new?topic\\_id=SERT\\_Met\\_Tropics](https://public.govdelivery.com/accounts/FLDEM/subscriber/new?topic_id=SERT_Met_Tropics).

Other reports available for subscription are available at <https://public.govdelivery.com/accounts/FLDEM/subscriber/new?preferences=true>