



# **TROPICAL UPDATE**

**9 AM EDT**

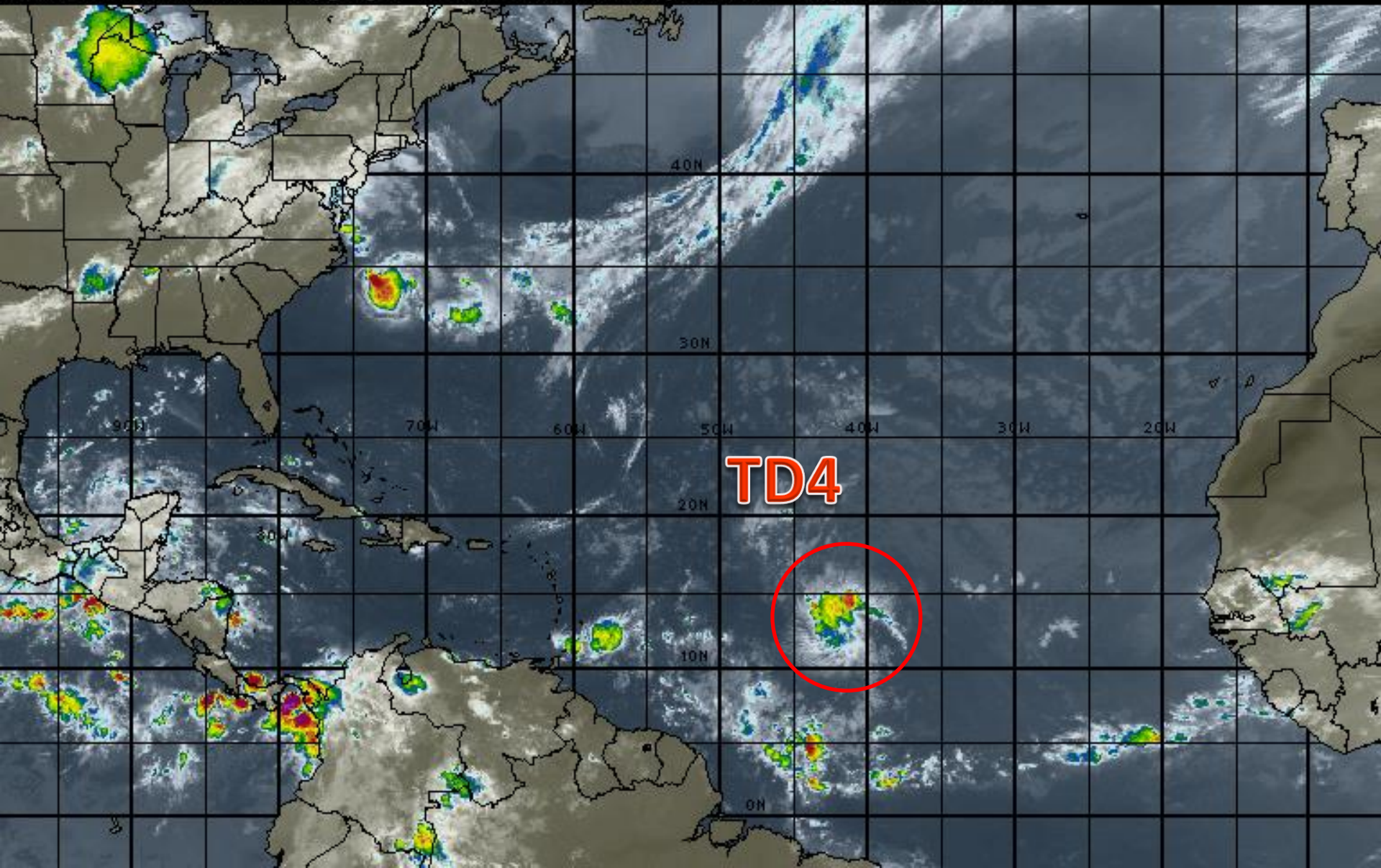
**Thursday, July 6, 2017**

**Tropical Depression #4**

**This update is intended for government and emergency response officials, and is provided for informational and situational awareness purposes only. Forecast conditions are subject to change based on a variety of environmental factors. For additional information, or for any life safety concerns with an active weather event please contact your County Emergency Management or Public Safety Office, local National Weather Service forecast office or visit the National Hurricane Center website at [www.nhc.noaa.gov](http://www.nhc.noaa.gov).**

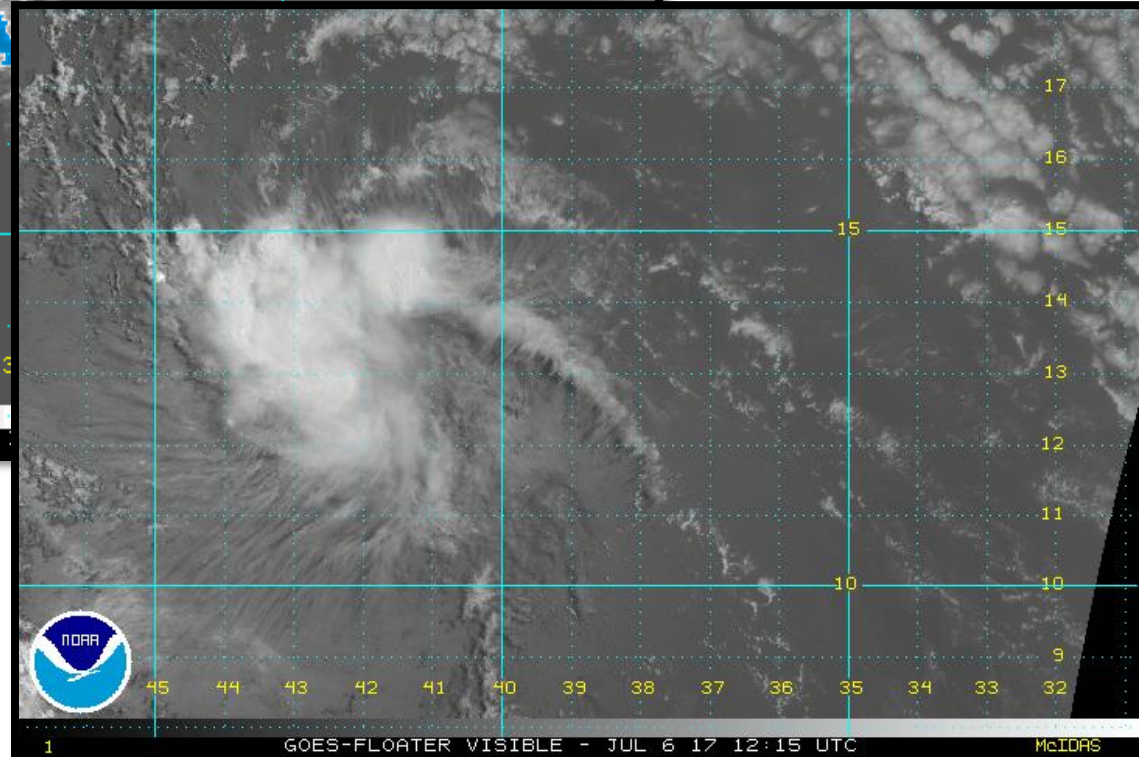
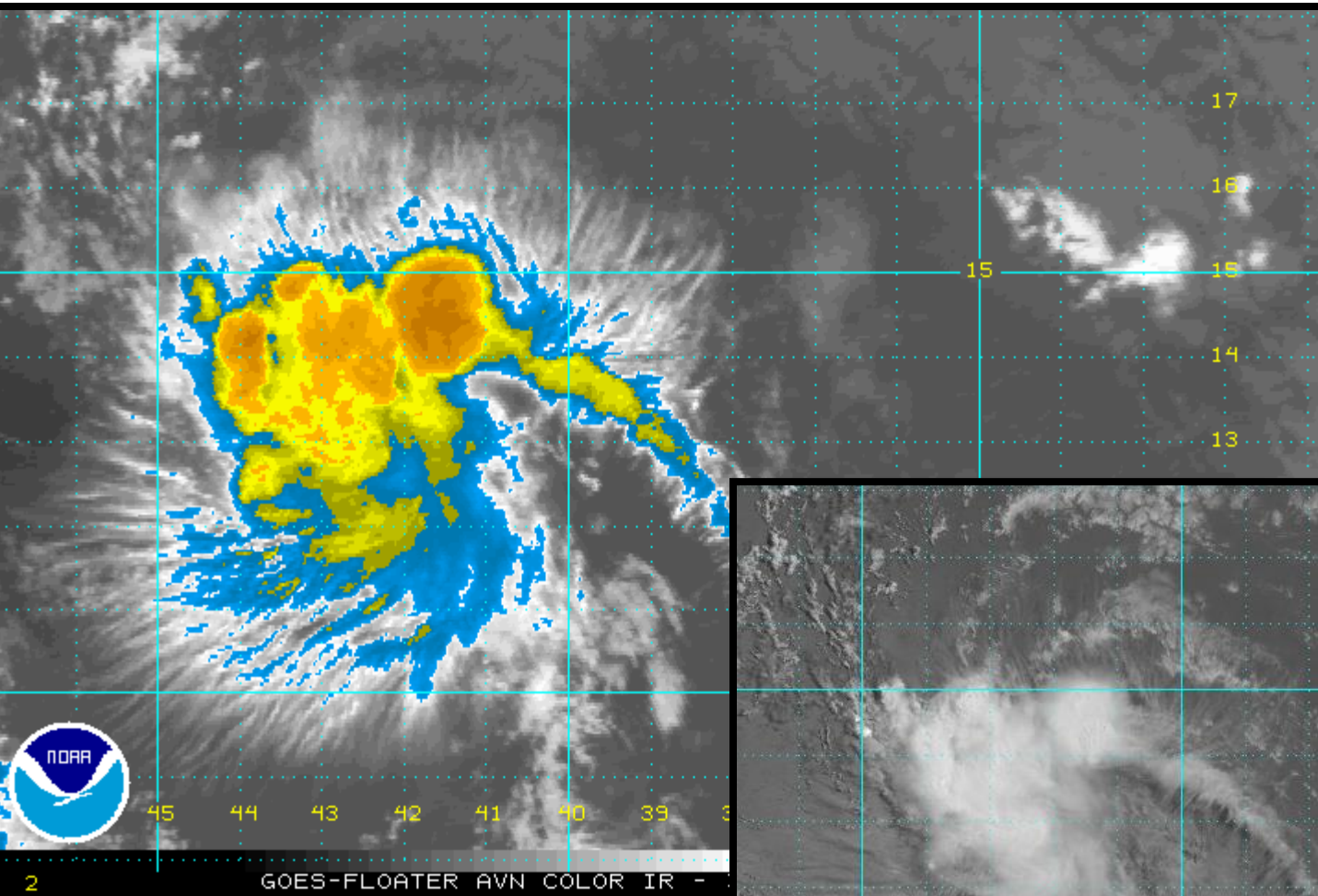
# Atlantic Basin Satellite Image

12:00 06-JUL-2017 GMT Copyright © 1998-2016 WSI Corporation <http://www.wsi.com>



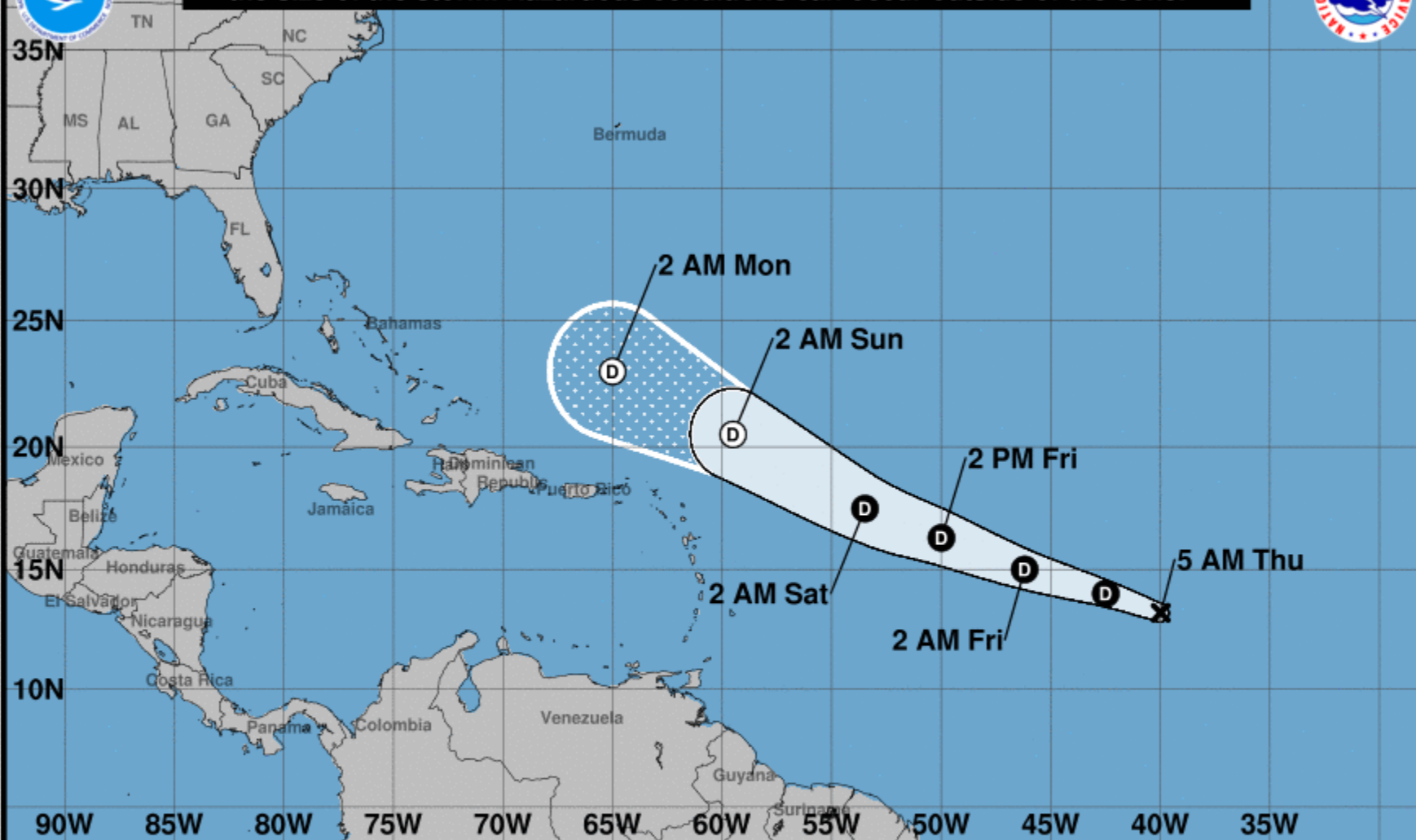


# Tropical Depression #4 Satellite Image





Note: The cone contains the probable path of the storm center but does not show the size of the storm. Hazardous conditions can occur outside of the cone.



### Tropical Depression Four

Thursday July 06, 2017

5 AM AST Advisory 2

NWS National Hurricane Center

### Current information: x

Center location 13.2 N 40.0 W

Maximum sustained wind 30 mph

Movement WNW at 17 mph

### Forecast positions:

● Tropical Cyclone ○ Post/Potential TC

Sustained winds: D < 39 mph

S 39-73 mph H 74-110 mph M > 110 mph

### Potential track area:

Day 1-3 Day 4-5

### Watches:

Hurricane Trop Stm

### Warnings:

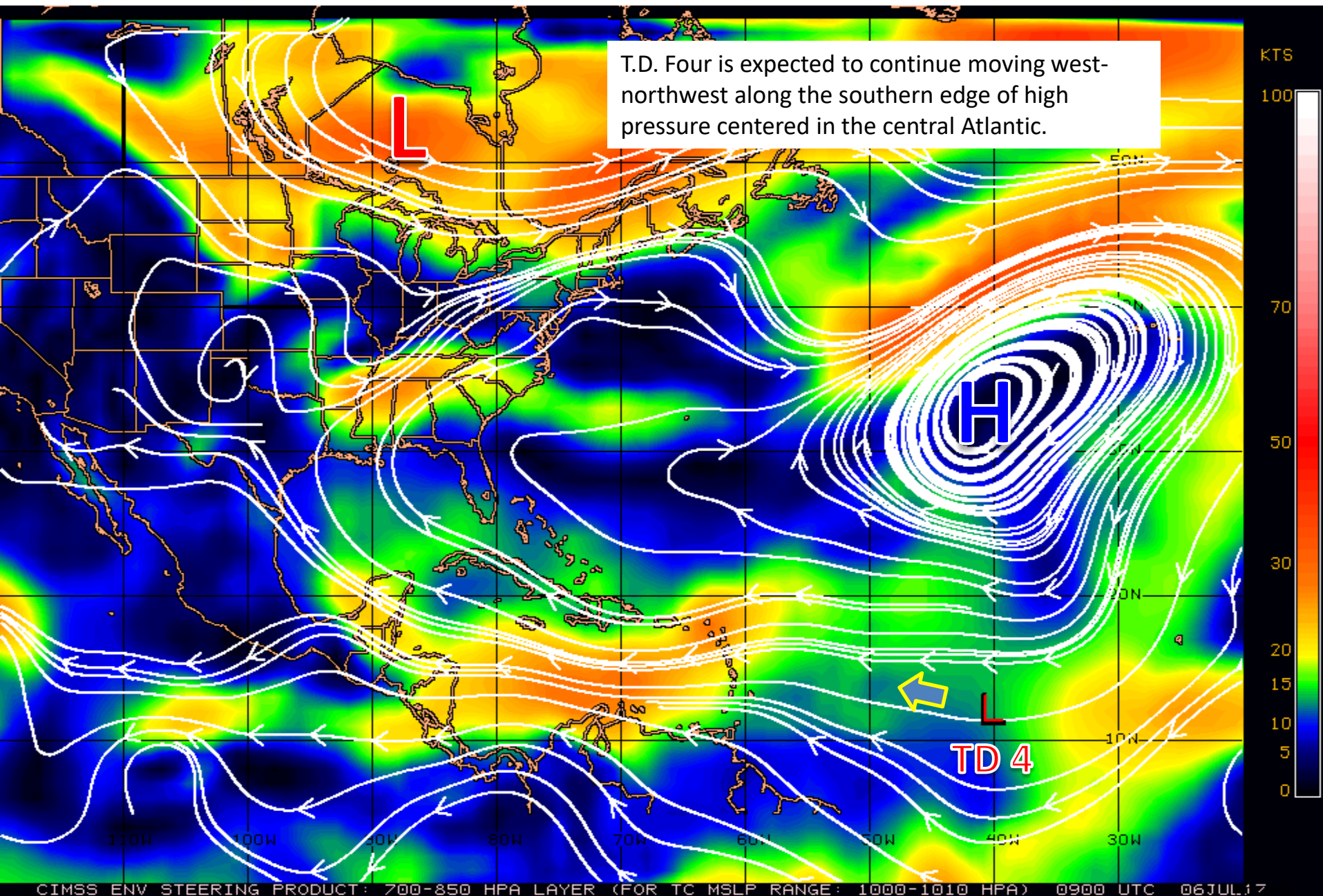
Hurricane Trop Stm

### Current wind extent:

Hurricane Trop Stm



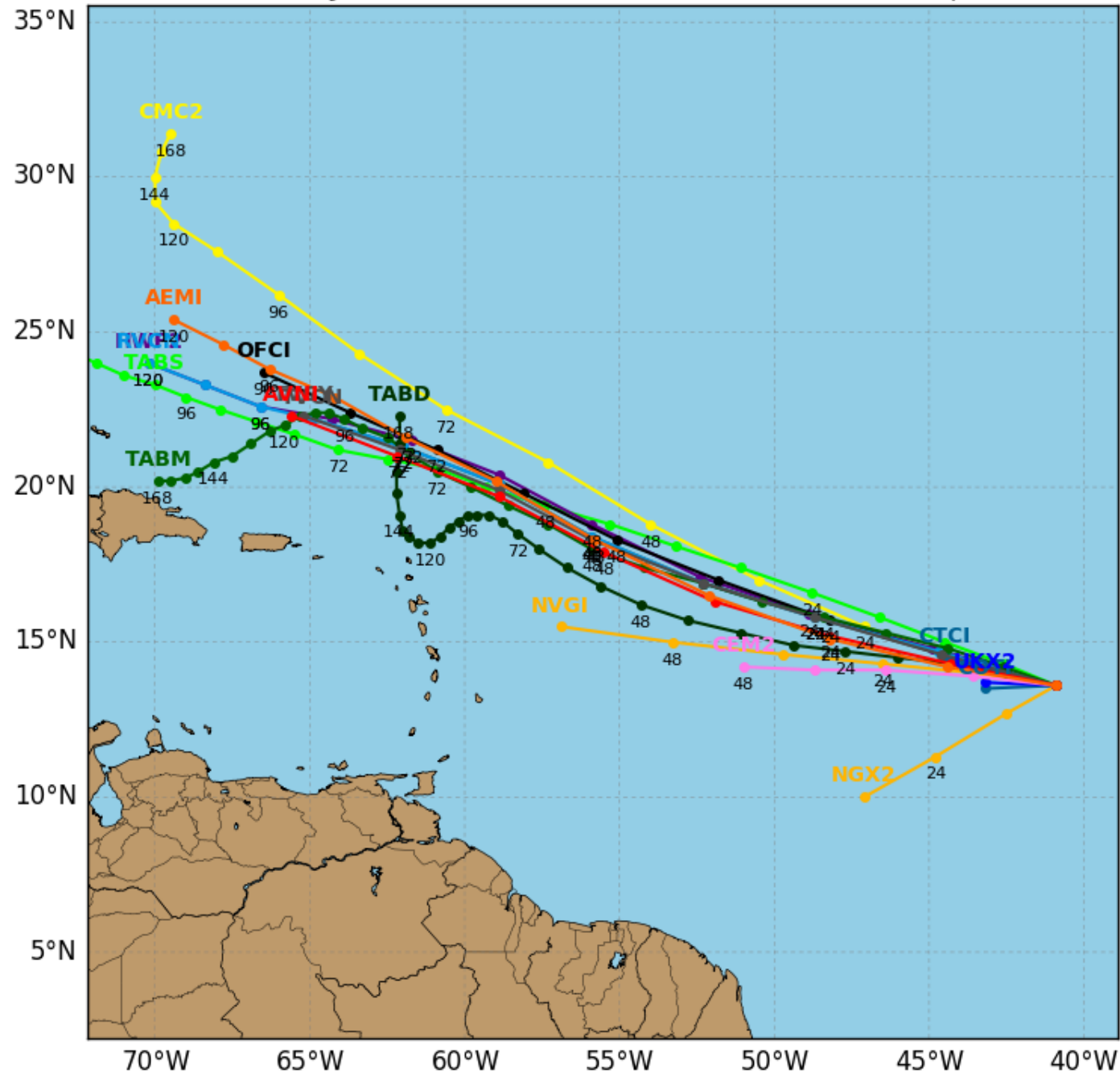
# Steering Currents



# Tropical Depression 04L Model Track Guidance

Initialized at 12z Jul 06 2017

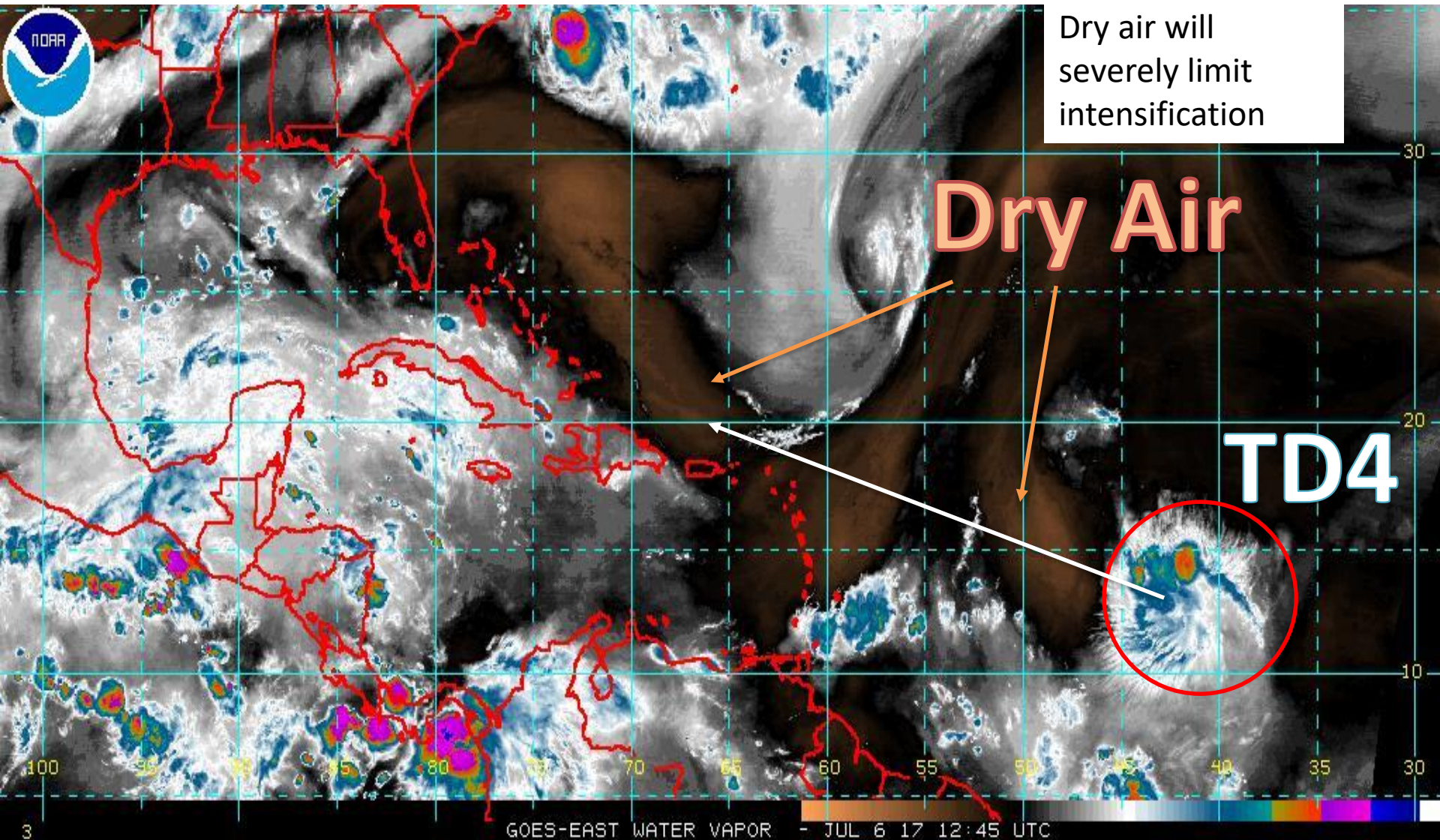
Levi Cowan - tropicaltidbits.com



Track guidance for T.D. Four is in good agreement, indicating a continued, steady west-northwest motion that takes it north of Puerto Rico within 72 to 96 hours.

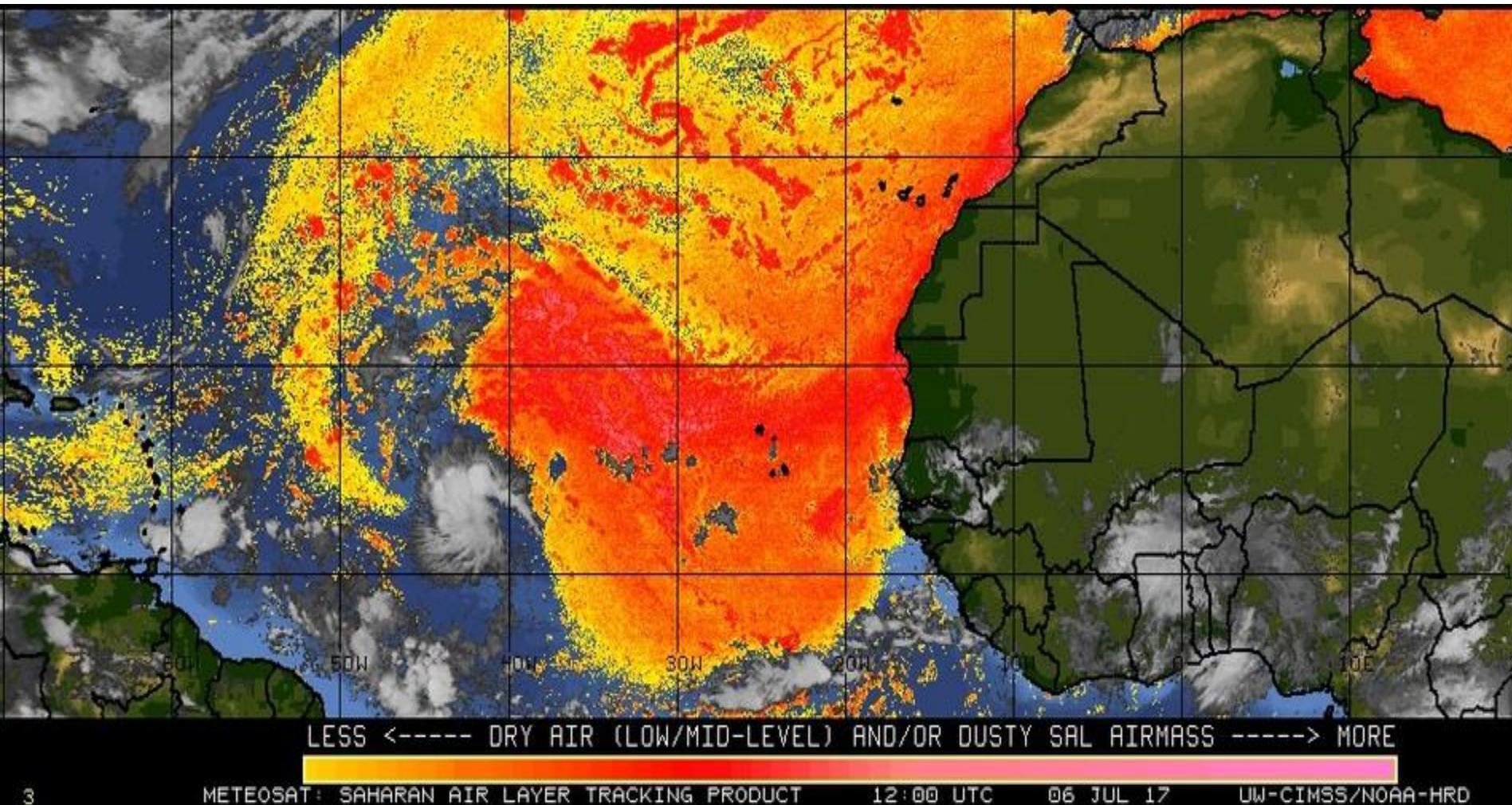


# Atlantic Water Vapor Satellite Image





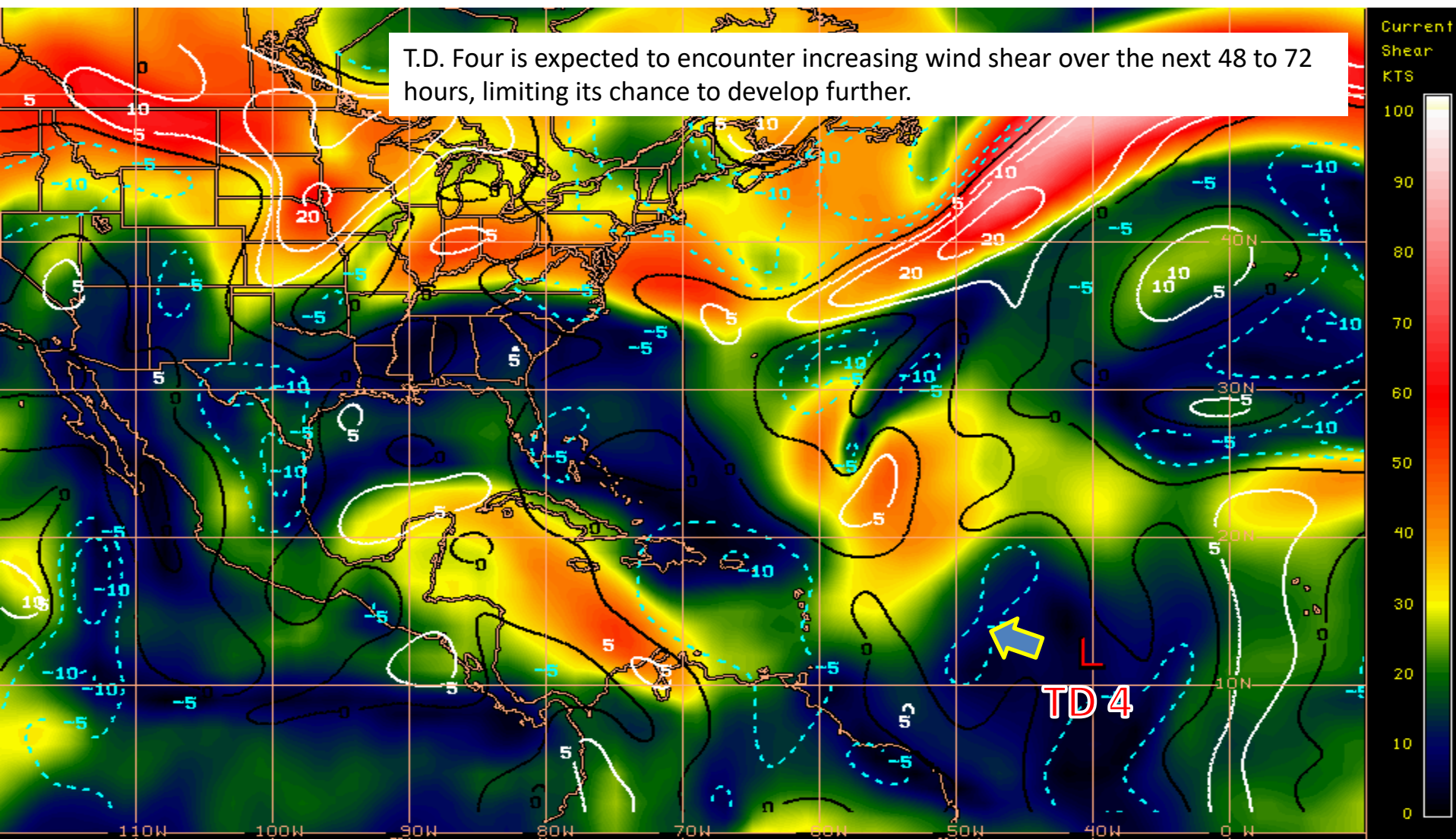
# Saharan Dust surrounding TD4





# Current Wind Shear (Shaded) and Shear Tendency (Lines)

T.D. Four is expected to encounter increasing wind shear over the next 48 to 72 hours, limiting its chance to develop further.



Shear Tendency (KTS) Over Past 24 Hours: Increasing — Decreasing ----

# Summary

- At 11pm EDT Wednesday, Invest 94L was upgraded to Tropical Depression #4.
- As of 5am EDT Thursday, Tropical Depression #4 was located about half way between the western coast of Africa and the Windward Islands, which is also about 2,740 miles southeast of Miami, Florida.
- Maximum sustained winds are near 30mph, and computer models, along with the official forecast, show the system moving quickly west-northwest through the next 5 days, where it will likely begin to weaken and eventually dissipate due to hostile environmental conditions.

## **Florida Outlook:**

- Tropical Depression #4 is not expected to be a threat to Florida.

Another briefing packet will be issued Friday morning. For more information on this system, visit the NHC website at [www.nhc.noaa.gov](http://www.nhc.noaa.gov)





# TROPICAL UPDATE

Created by:

Amy Godsey, Chief State Meteorologist  
[amy.godsey@em.myflorida.com](mailto:amy.godsey@em.myflorida.com)

State Meteorological Support Unit  
Florida Division of Emergency  
Management

Users wishing to subscribe (approval pending) to this distribution list, register at [https://public.govdelivery.com/accounts/FLDEM/subscriber/new?topic\\_id=SERT\\_Met\\_Tropics](https://public.govdelivery.com/accounts/FLDEM/subscriber/new?topic_id=SERT_Met_Tropics).

Other reports available for subscription are available at <https://public.govdelivery.com/accounts/FLDEM/subscriber/new?preferences=true>