



# **TROPICAL UPDATE**

**9 AM EDT**

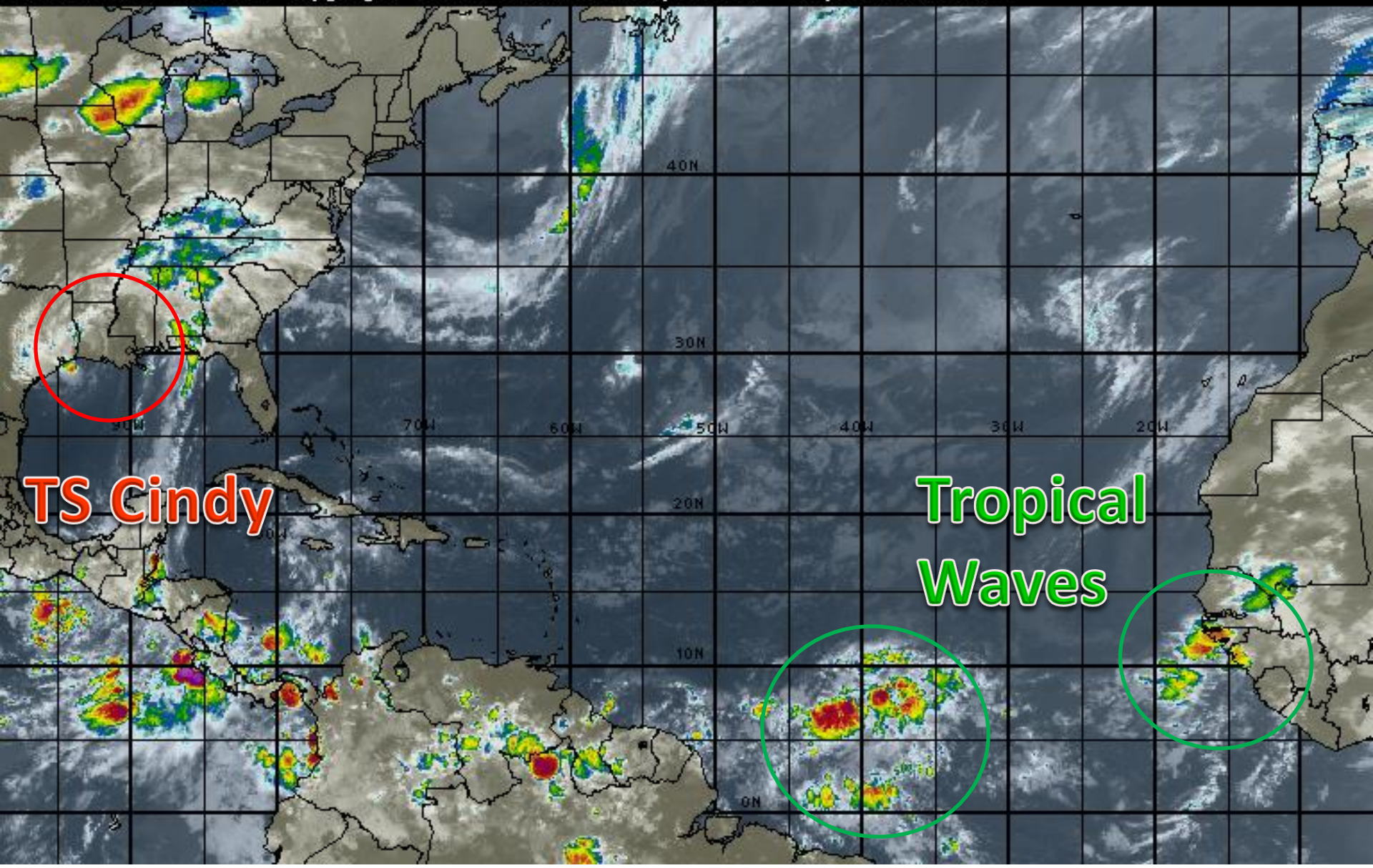
**Thursday, June 22, 2017**

**Tropical Storm Cindy**

**This update is intended for government and emergency response officials, and is provided for informational and situational awareness purposes only. Forecast conditions are subject to change based on a variety of environmental factors. For additional information, or for any life safety concerns with an active weather event please contact your County Emergency Management or Public Safety Office, local National Weather Service forecast office or visit the National Hurricane Center website at [www.nhc.noaa.gov](http://www.nhc.noaa.gov).**

# Atlantic Basin Satellite Image

09:00 22-JUN-2017 GMT Copyright © 1998-2016 WSI Corporation <http://www.wsi.com>





# Tropical Storm Cindy

7 AM CDT Thu Jun 22 2017

Position 30.5 N 93.7 W

Maximum Winds 40 mph

Gusts 50 mph

Movement N at 11 mph

Minimum Pressure 994 mb (29.36 inches)

Blue Marble basemap imagery courtesy NASA

Satellite 6:58 AM CDT

6:58 AM CDT

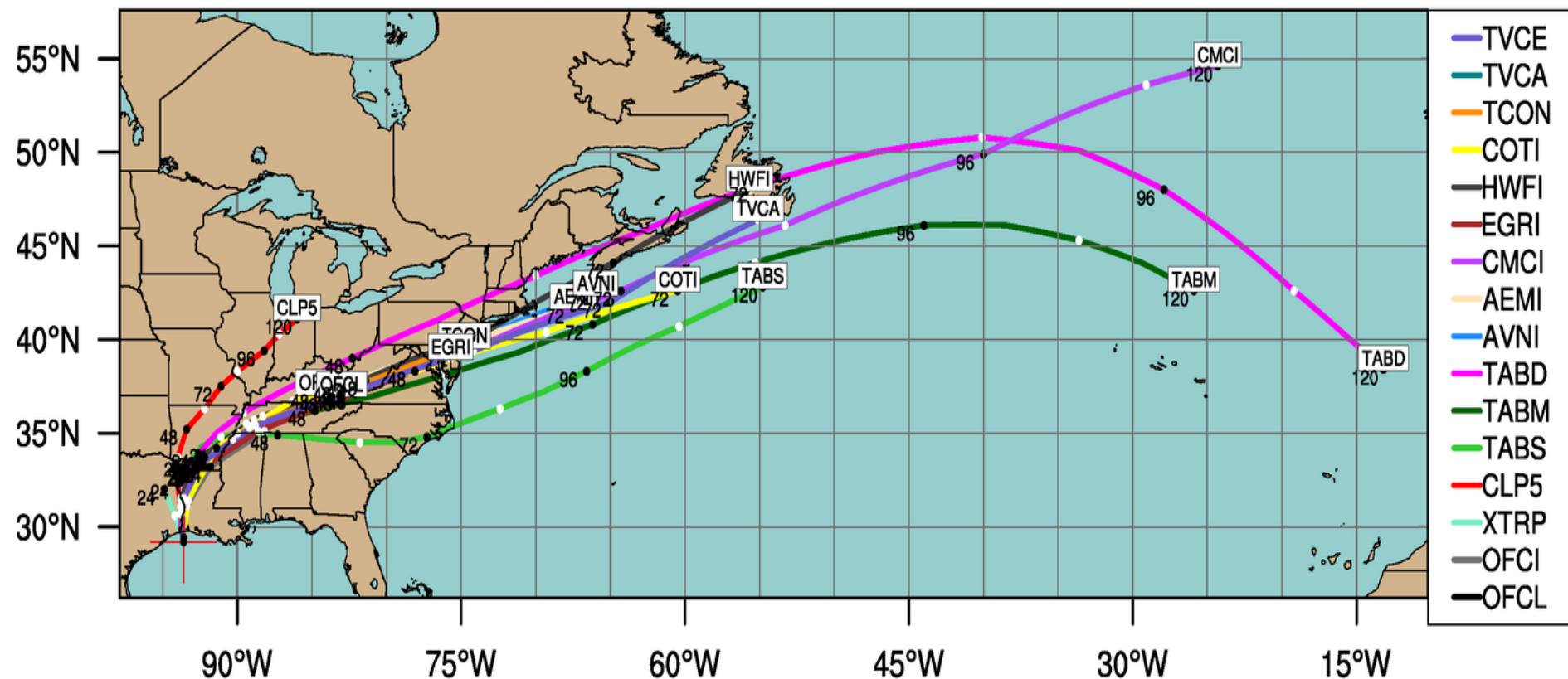


# TROPICAL STORM CINDY (AL03)

Early-cycle track guidance initialized at 0600 UTC, 22 June 2017

Current Intensity: 40 kt

Current Basin: North Atlantic



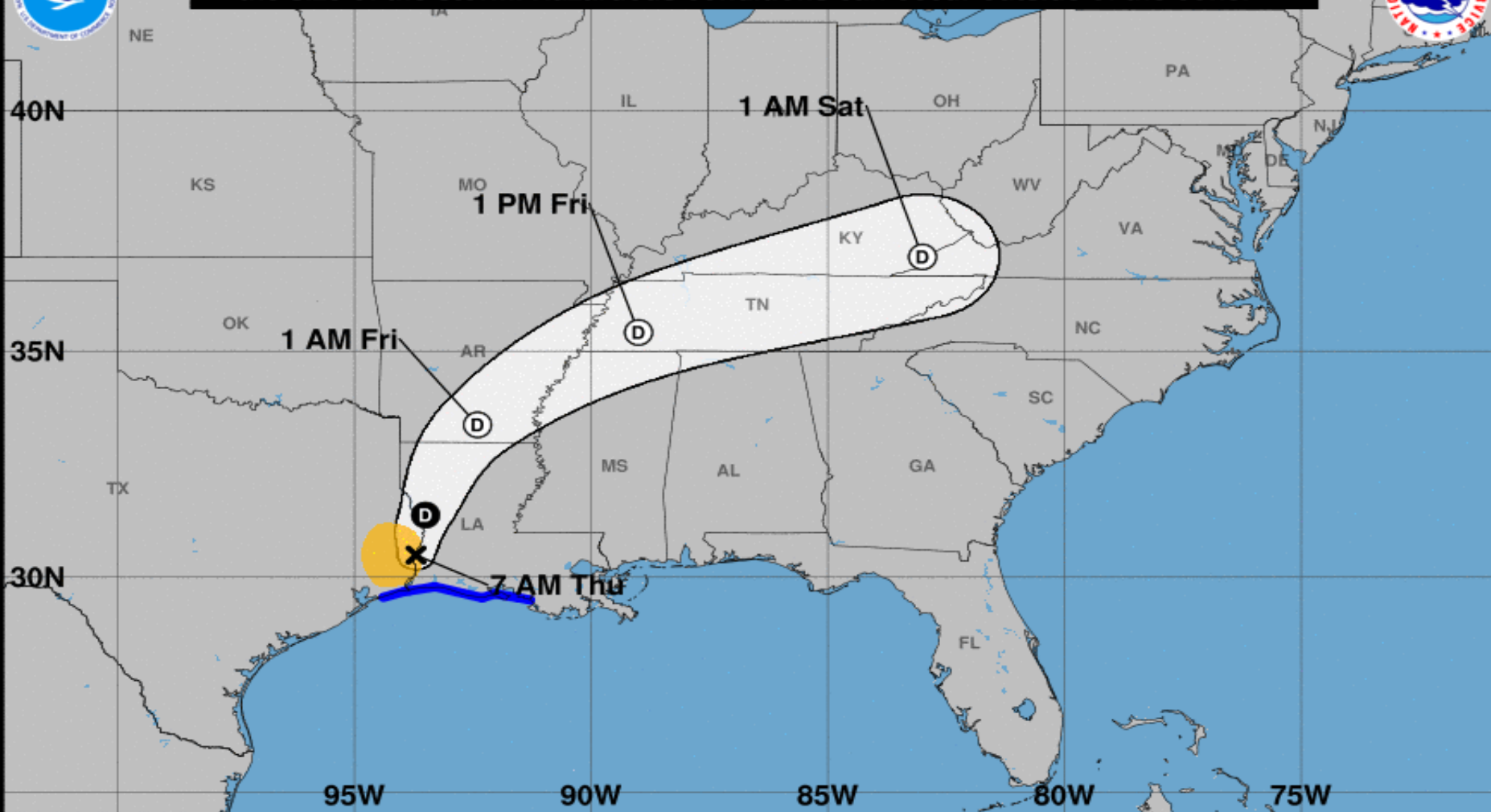
By using this plot, the user agrees to the UCAR Terms of Use  
which can be accessed at: <http://www2.ucar.edu/terms-of-use>

Plot generated at 0920 UTC 22 June 2017





**Note: The cone contains the probable path of the storm center but does not show the size of the storm. Hazardous conditions can occur outside of the cone.**



### Tropical Storm Cindy

Thursday June 22, 2017

7 AM CDT Intermediate Advisory 11A

NWS National Hurricane Center

### Current information: x

Center location 30.5 N 93.7 W

Maximum sustained wind 40 mph

Movement N at 12 mph

### Forecast positions:

● Tropical Cyclone ○ Post/Potential TC

Sustained winds: D < 39 mph

S 39-73 mph H 74-110 mph M > 110 mph

### Potential track area:

Day 1-3 Day 4-5

### Watches:

Hurricane Trop Stm

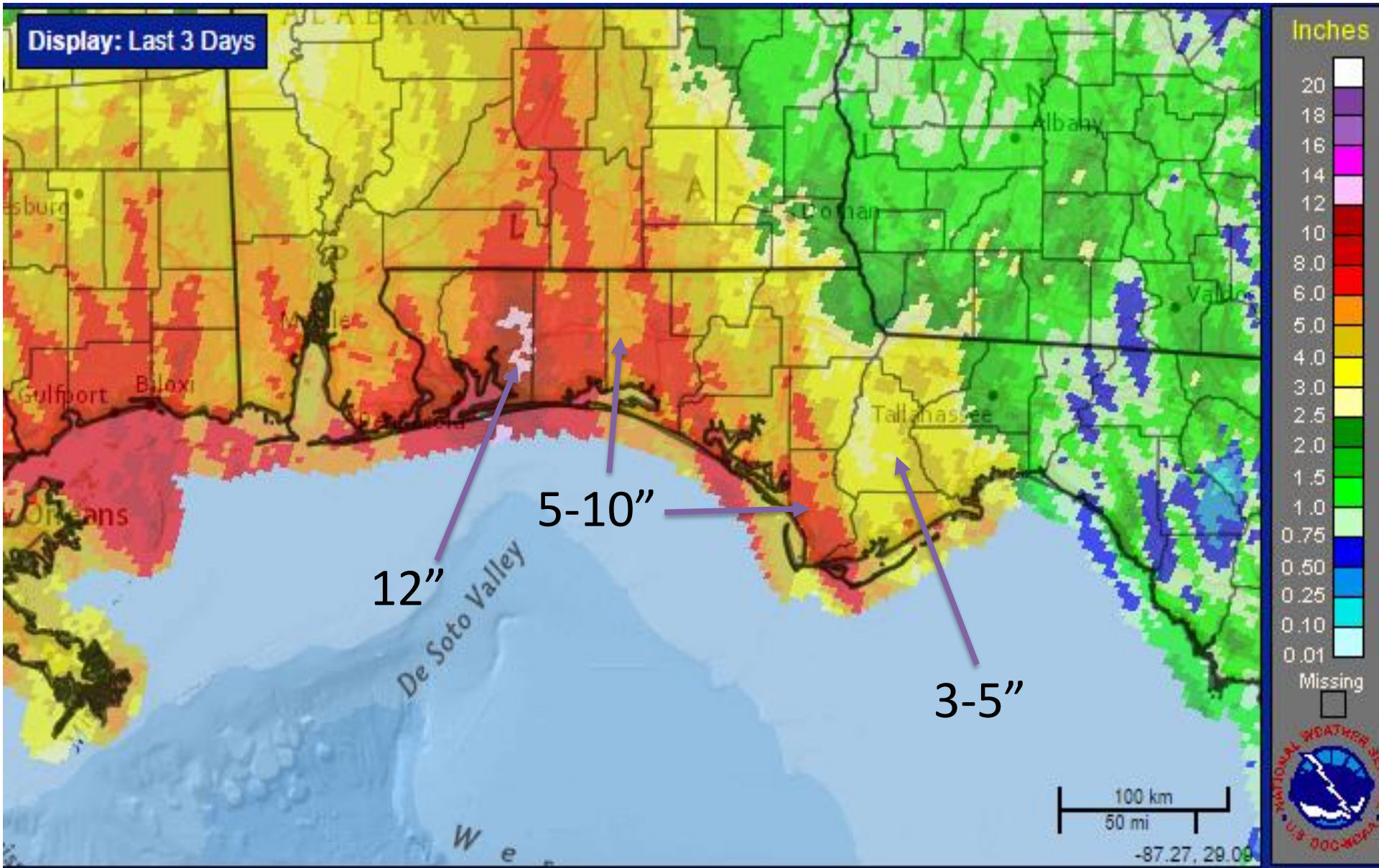
### Warnings:

Hurricane Trop Stm

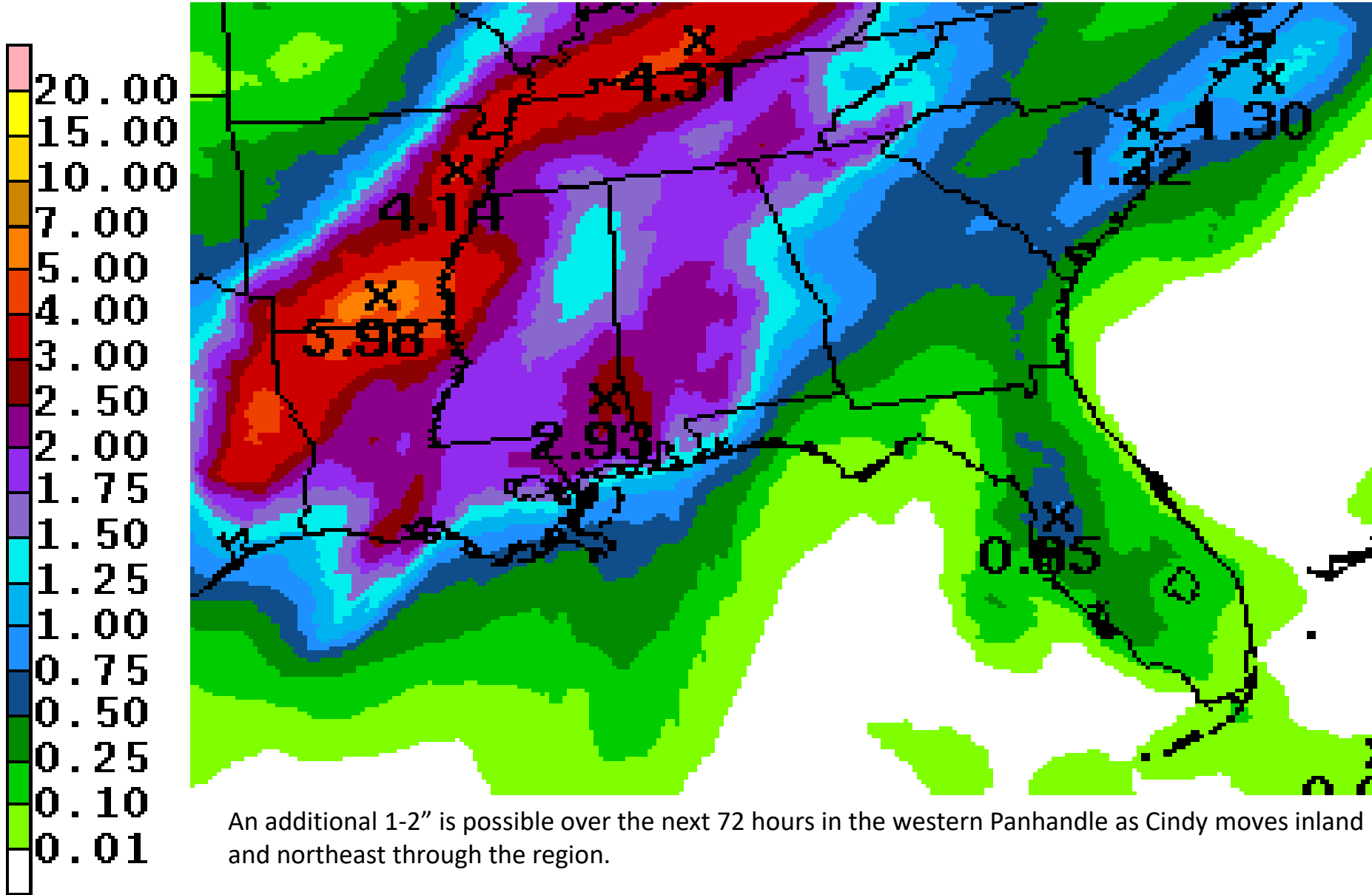
### Current wind extent:

Hurricane Trop Stm

# Rainfall Estimates – Past 72 hours



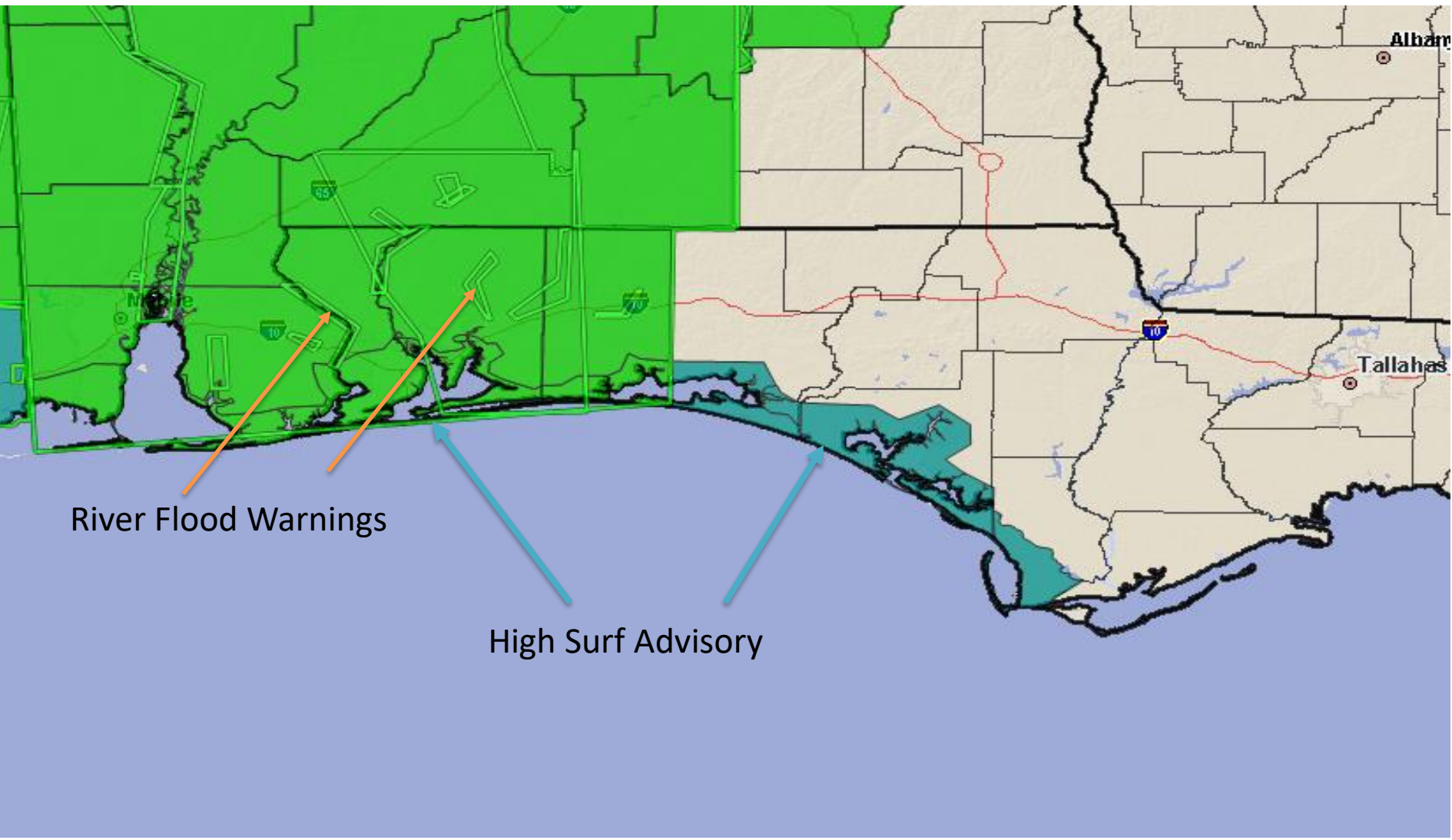
# *Forecast Total Rainfall Accumulations for next 3 Days*



An additional 1-2" is possible over the next 72 hours in the western Panhandle as Cindy moves inland and northeast through the region.

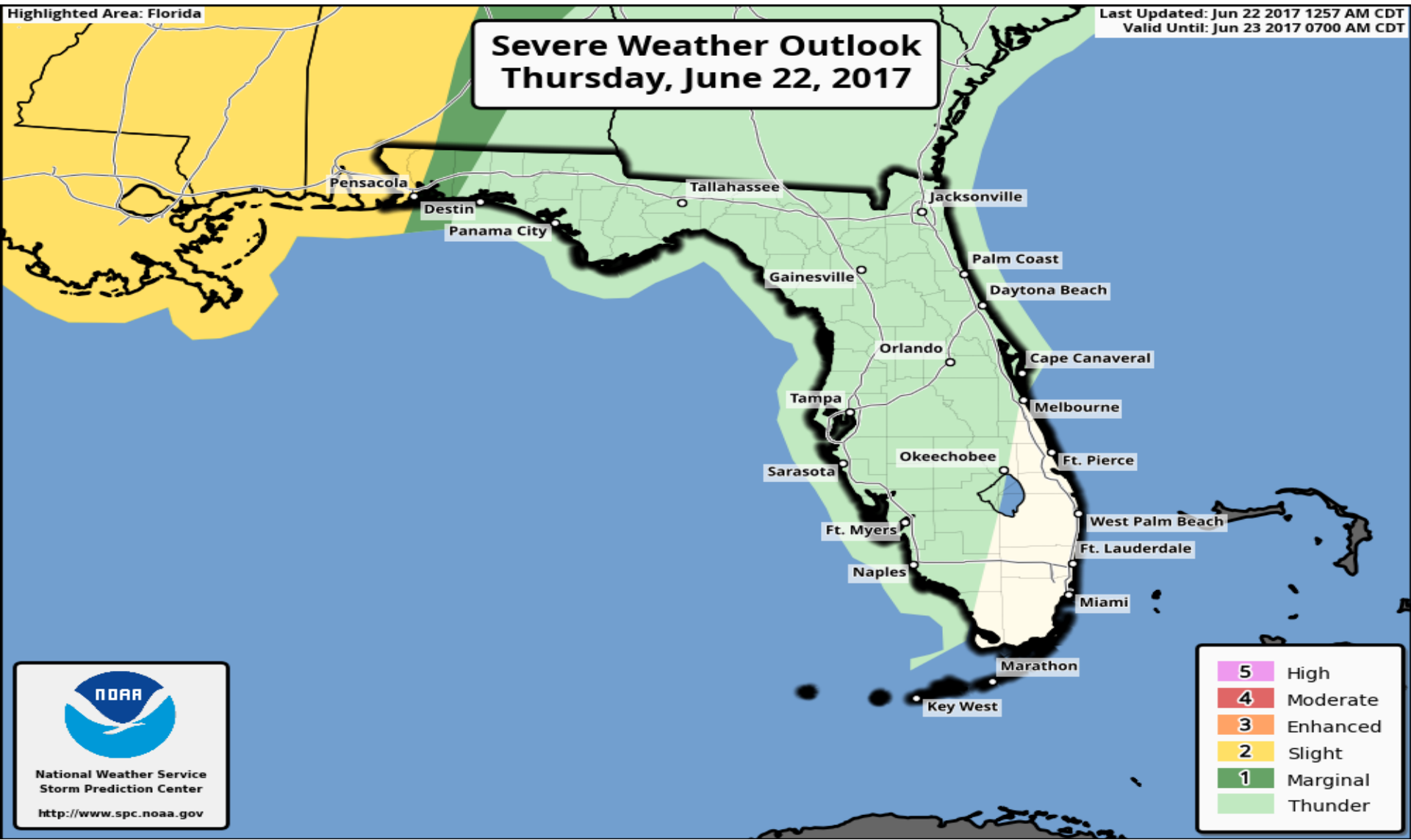


# Flash Flood Watch In Effect through 2am Friday





# Risk for isolated tornadoes today

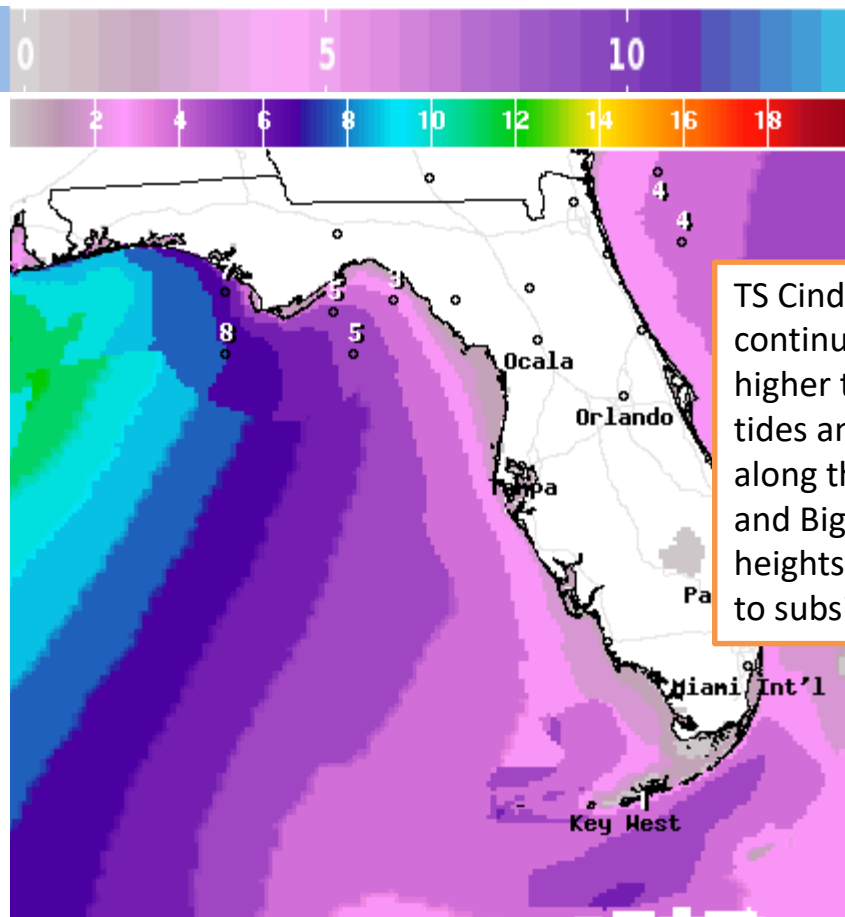




Updated: 20170622/0802 UTC



# Forecast Wave Heights (feet) –Thursday & Friday



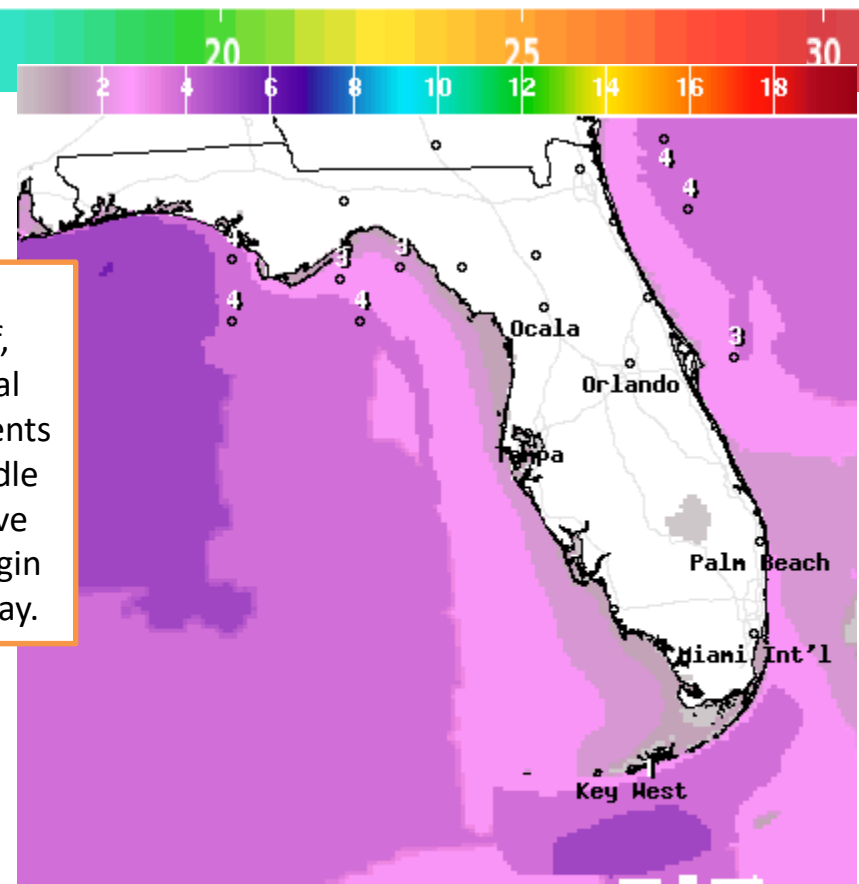
Wave Height(ft) Ending Thu Jun 22 2017 2PM EDT

(Thu Jun 22 2017 18Z)

National Digital Forecast Database

11z issuance

Graphic created-Jun 22 7:38AM EDT



Wave Height(ft) Ending Fri Jun 23 2017 2PM EDT

(Fri Jun 23 2017 18Z)

National Digital Forecast Database

11z issuance

Graphic created-Jun 22 7:38AM EDT

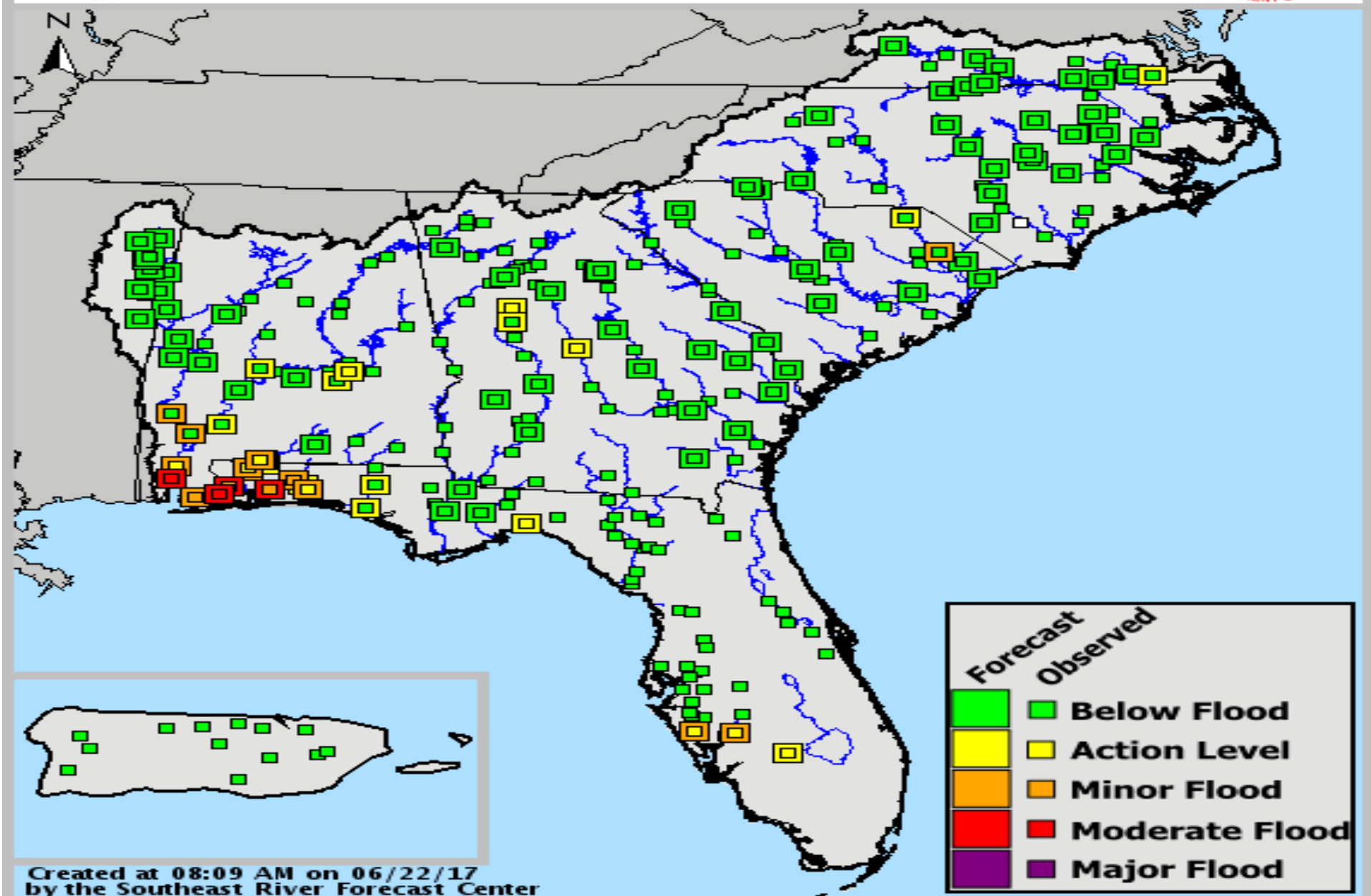
## Thursday

## Friday



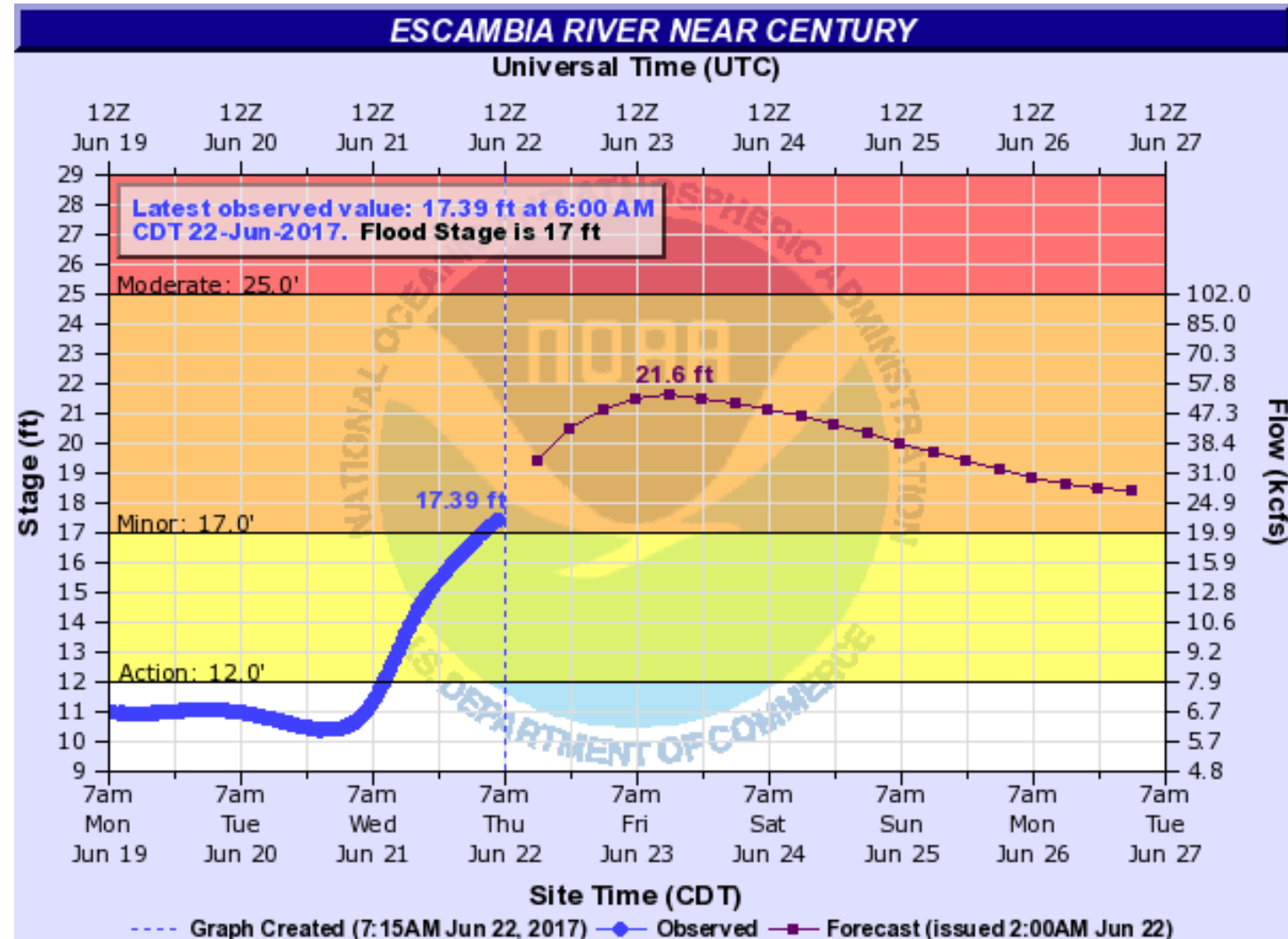
# SERFC River Conditions

Valid: 06/22/2017 @ 08:09 AM





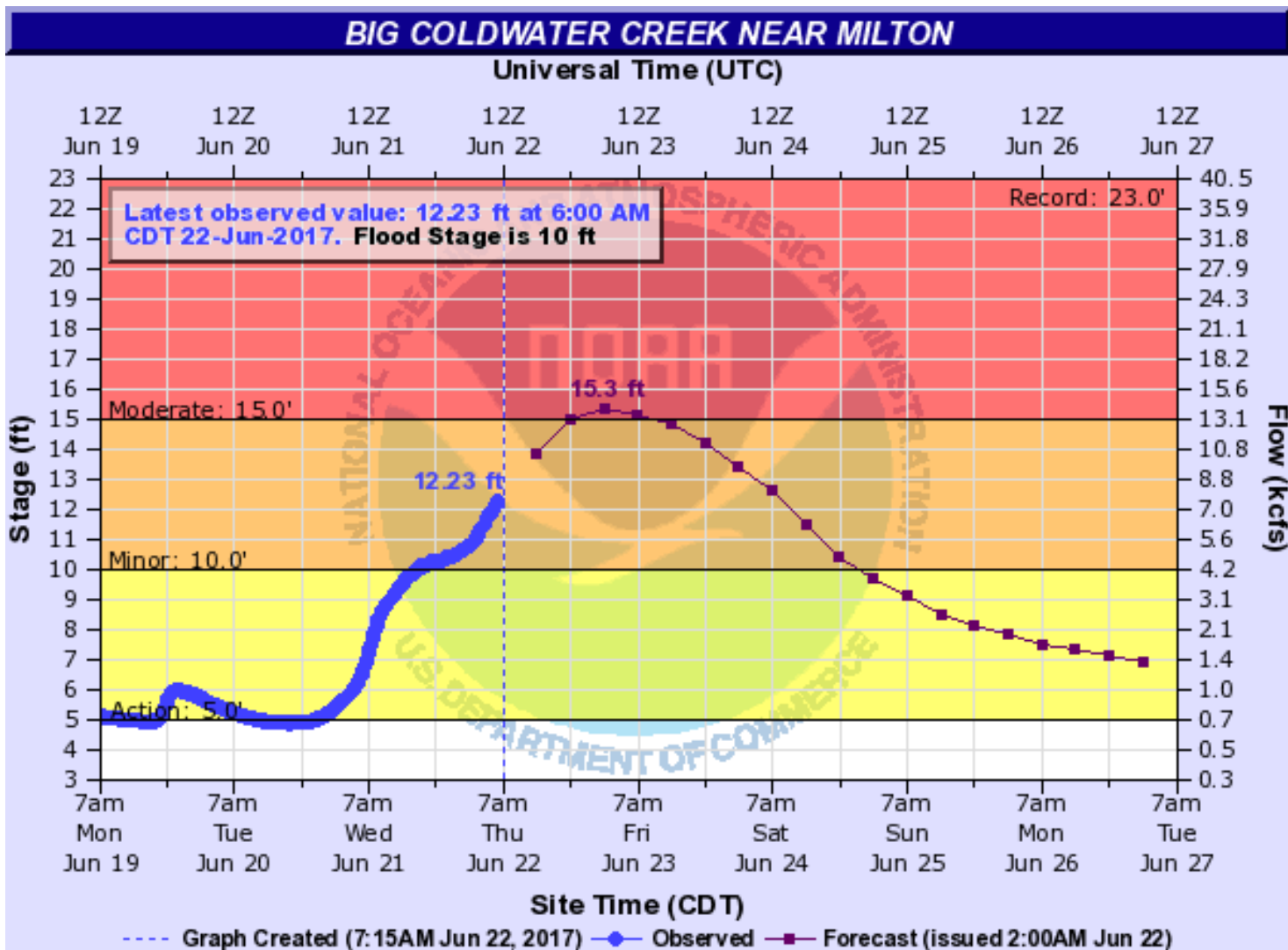
<http://water.weather.gov/ahps2/hydrograph.php?wfo=mob&gage=ctyf1>



River forecasts will be updated by 10am.

Minor flooding of this river typically produces some flooding of low lying pastures.

<http://water.weather.gov/ahps2/hydrograph.php?wfo=mob&gage=mlnf1>

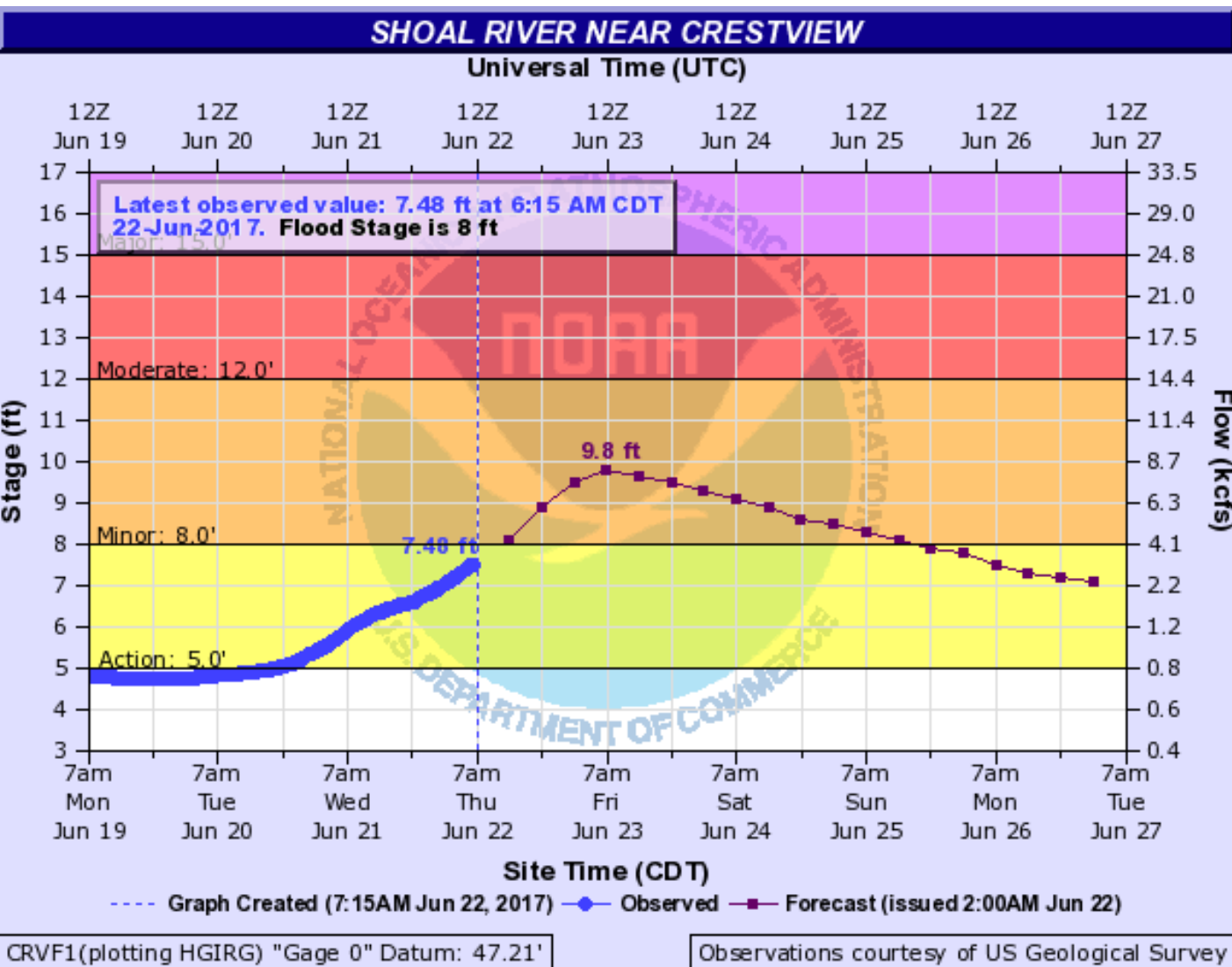


River forecasts will be updated by 10am.

Minor flooding of this river typically produces some flooding of low lying pastures and fish camps. Water may approach homes in the Ward Basin area south of Milton.



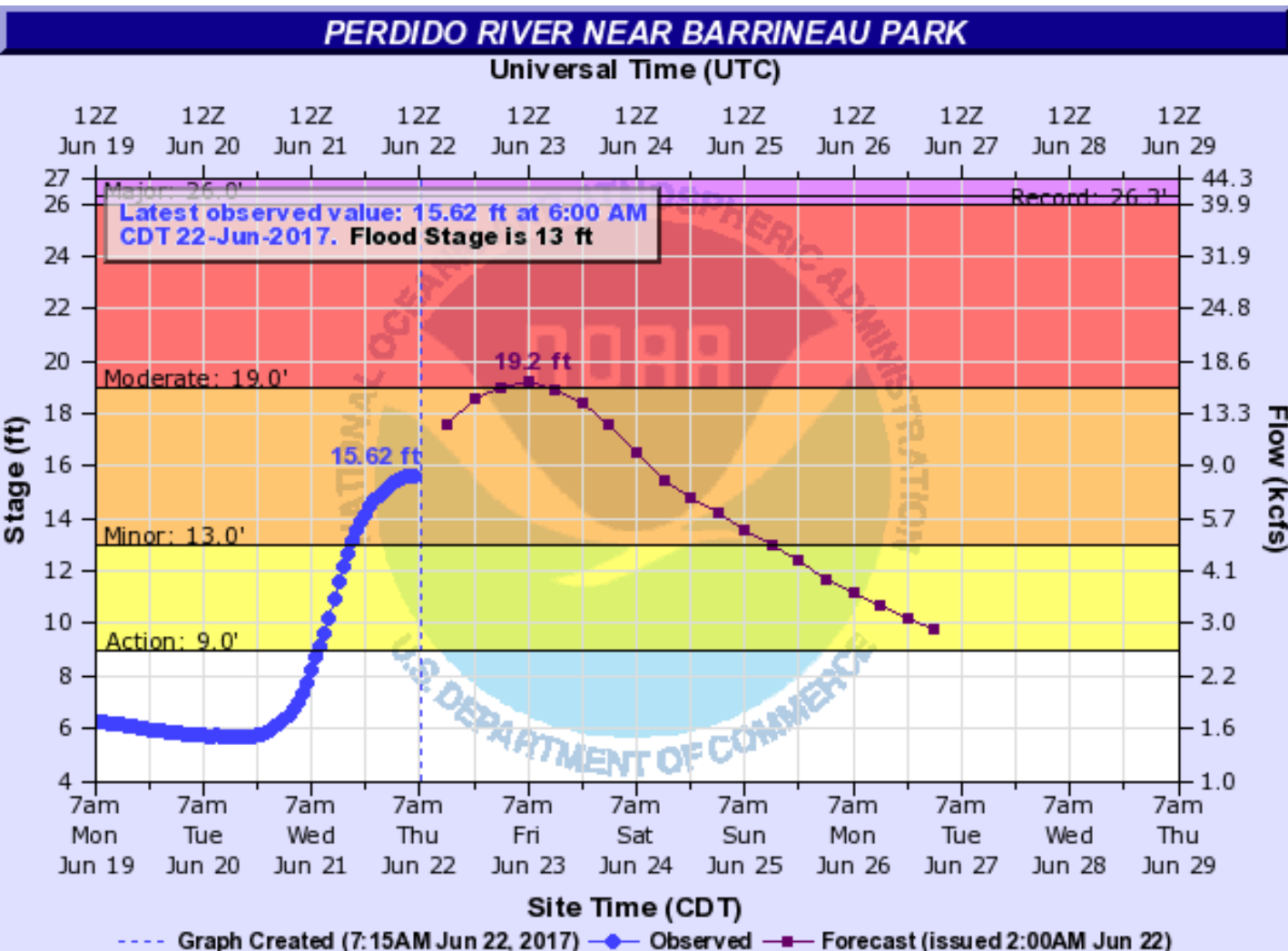
<http://water.weather.gov/ahps2/hydrograph.php?wfo=mob&gage=crvf1>



River forecasts will be updated by 10am.

Minor flooding of this river typically produces some flooding of low lying pastures. Water may approach trailers north of the Okaloosa Correctional Institute.

<http://water.weather.gov/ahps2/hydrograph.php?wfo=mob&gage=brpf1>



River forecasts will be updated by 10am.

Minor flooding of this river typically produces some flooding of low lying pastures and fish camps. Water may also approach trailers and homes near Adventures Perdido River.



# Summary

- At 5am EDT Thursday, Tropical Storm Cindy made landfall near Holly Beach, Louisiana about 30 miles southwest of Lake Charles, Louisiana as a 40mph tropical storm.
- At 8am EDT Thursday, Tropical Storm Cindy was located about 40 miles northwest of Lake Charles, Louisiana, moving northward at 12mph with winds remaining around 40 mph.
- A turn to the north-northeast is expected today, followed by a more northeast motion on Friday, taking the storm into Arkansas and then across the Tennessee Valley on Friday.
- However, continued weakening is forecast during the next 48 hours, and Cindy should become a tropical depression later this morning, and become a remnant low tonight.
- Elsewhere, while there are a few tropical waves in the eastern Atlantic, no additional tropical development is expected within the next 5 days.

## **Florida Outlook:**

- Additional rainfall amounts up to 1-2” are possible today over the Florida Panhandle. A Flash Flood Watch remains in effect for Escambia, Santa Rosa and Okaloosa counties.
- River Flood Warnings are also in effect for a few Panhandle rivers. Minor flooding is ongoing or expected.
- Lingering high waves will continue through tonight along the Panhandle coast. A High Surf Advisory remains in effect west of Apalachicola and a high risk of rip currents is expected through at least Friday.
- A Tornado Watch continues for western portions of the Florida Panhandle through 1pm CDT Thursday.

This will be the last briefing packet for TS Cindy. For more information on this system visit the [NHC website](#) or your local NWS page.



# TROPICAL UPDATE

Created by:

Amy Godsey, Chief State Meteorologist  
[amy.godsey@em.myflorida.com](mailto:amy.godsey@em.myflorida.com)

State Meteorological Support Unit  
Florida Division of Emergency  
Management

Users wishing to subscribe (approval pending) to this distribution list, register at [https://public.govdelivery.com/accounts/FLDEM/subscriber/new?topic\\_id=SERT\\_Met\\_Tropics](https://public.govdelivery.com/accounts/FLDEM/subscriber/new?topic_id=SERT_Met_Tropics).

Other reports available for subscription are available at <https://public.govdelivery.com/accounts/FLDEM/subscriber/new?preferences=true>