



TROPICAL UPDATE

5 PM EDT

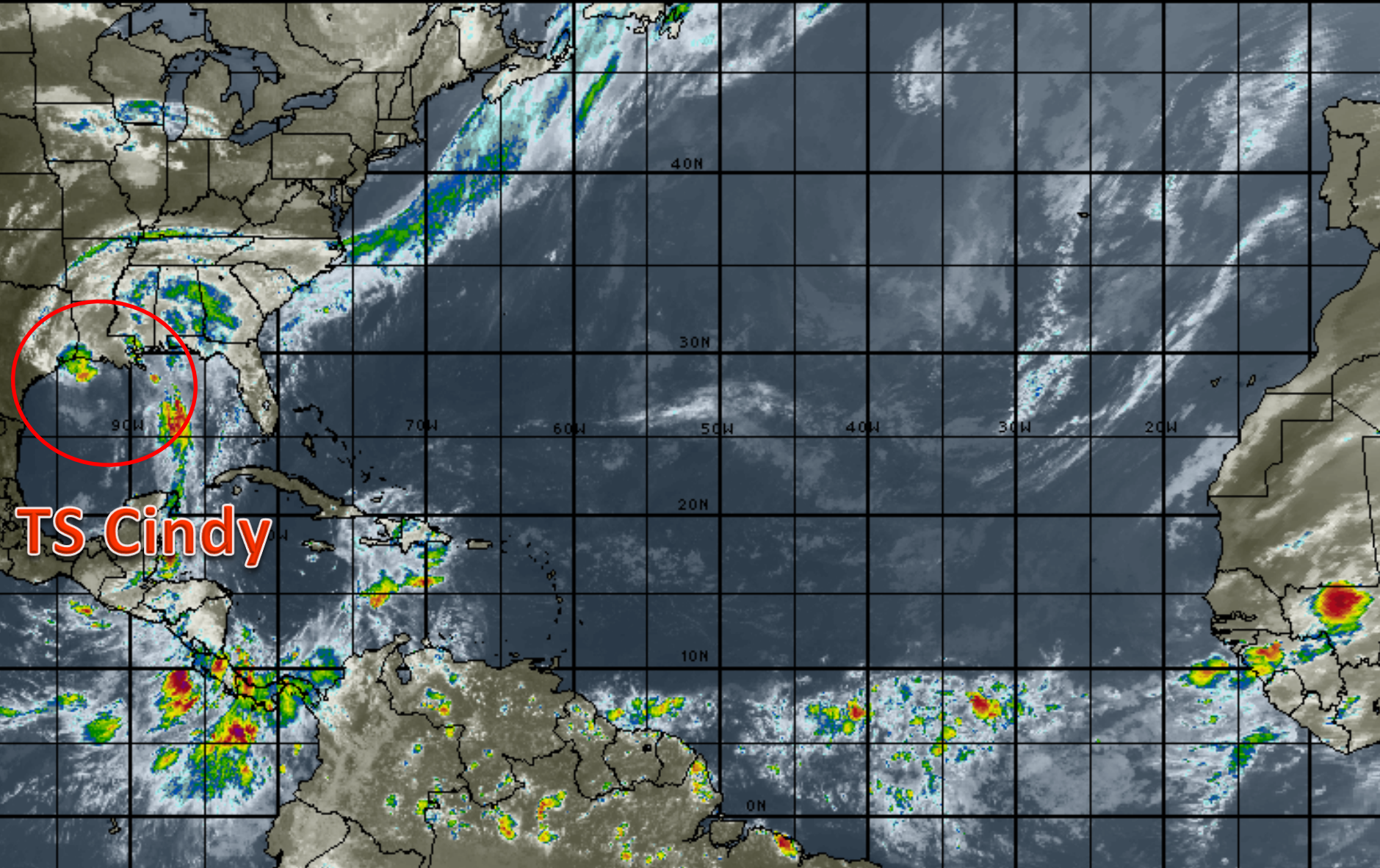
Wednesday, June 21, 2017

Tropical Storm Cindy

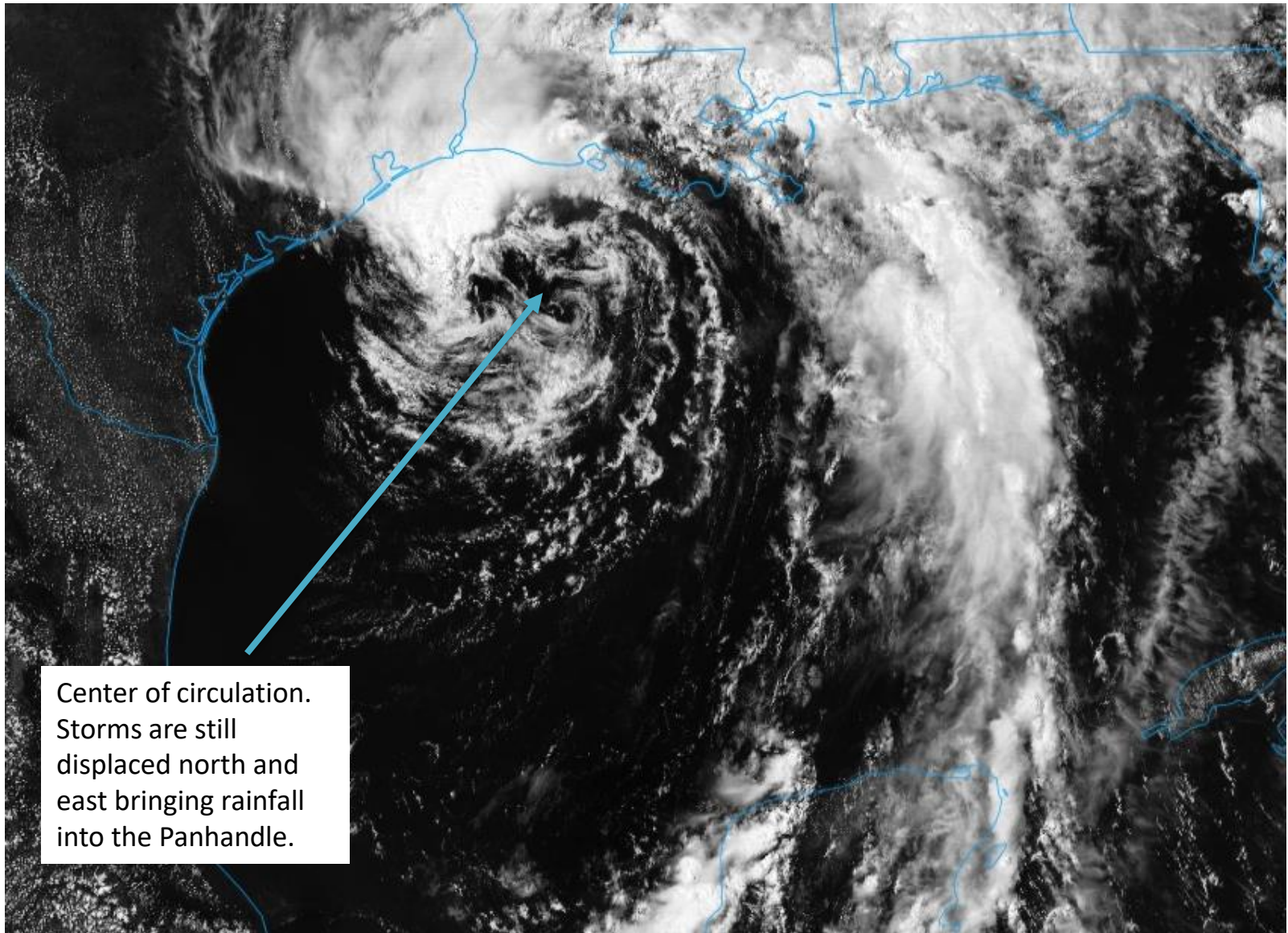
This update is intended for government and emergency response officials, and is provided for informational and situational awareness purposes only. Forecast conditions are subject to change based on a variety of environmental factors. For additional information, or for any life safety concerns with an active weather event please contact your County Emergency Management or Public Safety Office, local National Weather Service forecast office or visit the National Hurricane Center website at www.nhc.noaa.gov.

Atlantic Basin Satellite Image

18:00 21-JUN-2017 GMT Copyright © 1998-2016 MSI Corporation <http://www.usi.com>



Tropical Storm Cindy Satellite Image

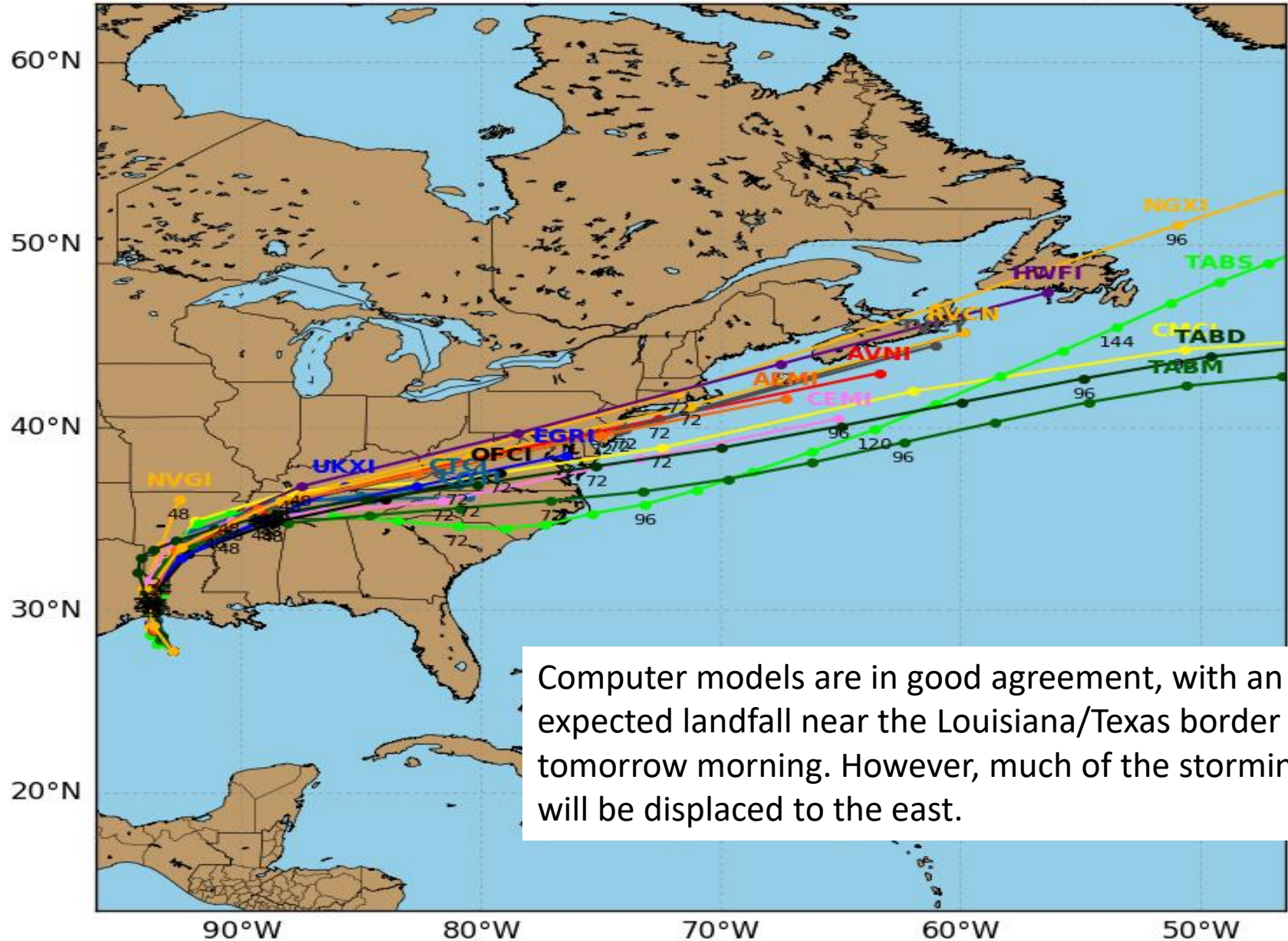


Center of circulation.
Storms are still
displaced north and
east bringing rainfall
into the Panhandle.

Tropical Storm CINDY Model Track Guidance

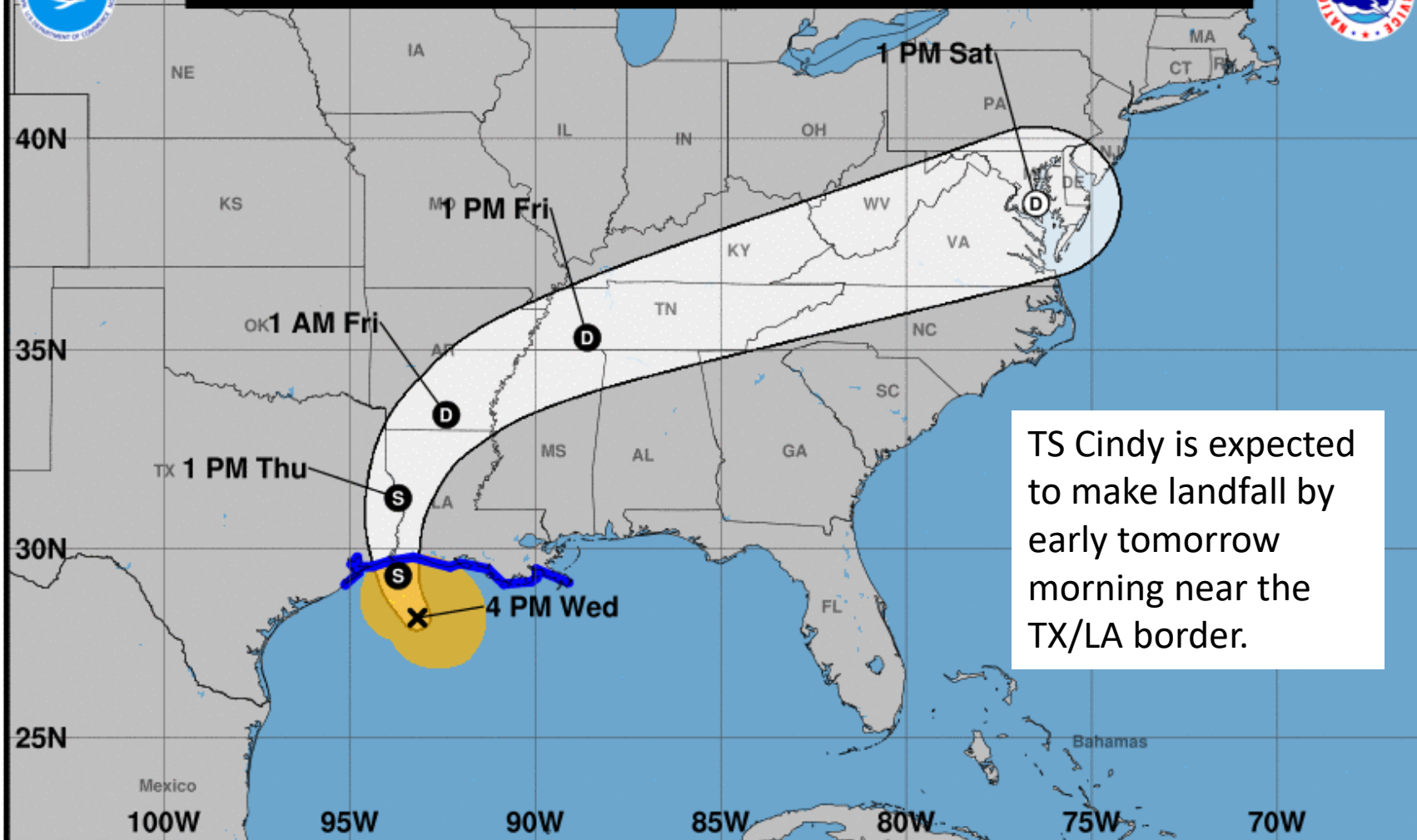
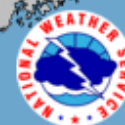
Initialized at 18z Jun 21 2017

Levi Cowan - tropicaltidbits.com





Note: The cone contains the probable path of the storm center but does not show the size of the storm. Hazardous conditions can occur outside of the cone.



Tropical Storm Cindy

Wednesday June 21, 2017

4 PM CDT Advisory 9

NWS National Hurricane Center

Current information: x

Center location 28.2 N 93.2 W

Maximum sustained wind 50 mph

Movement NW at 9 mph

Forecast positions:

● Tropical Cyclone ○ Post/Potential TC

Sustained winds: D < 39 mph

S 39-73 mph H 74-110 mph M > 110 mph

Potential track area:



Day 1-3



Day 4-5

Watches:



Hurricane



Trop Stm

Warnings:



Hurricane



Trop Stm

Current wind extent:



Hurricane



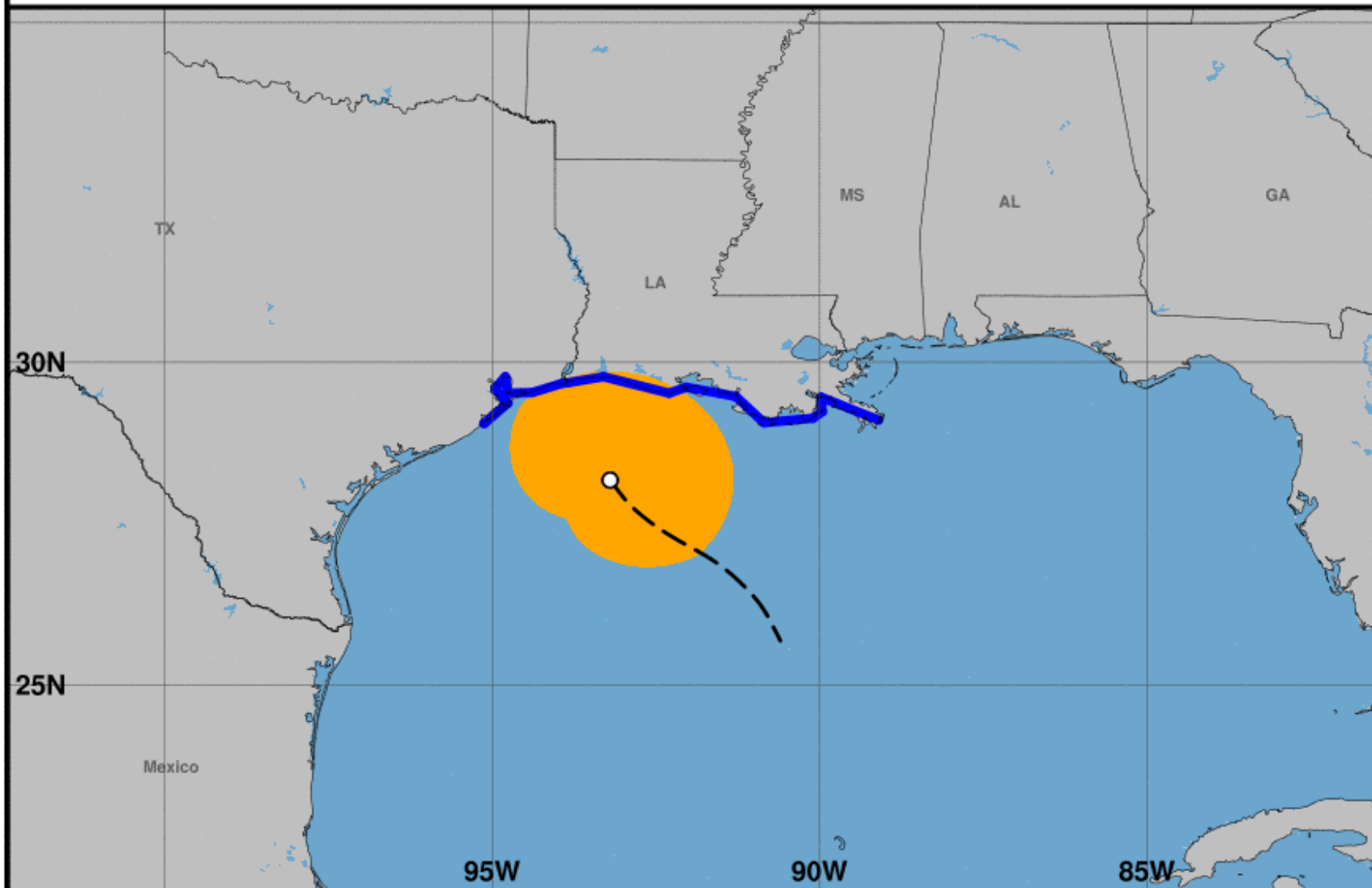
Trop Stm



Surface Wind Field of Tropical Storm Cindy

Sustained Winds as of 400 PM CDT Wed Jun 21, 2017

Advisory Number 9



Watches:

- Hurricane Watch
- Tropical Storm Watch

Warnings:

- Hurricane Warning
- Tropical Storm Warning

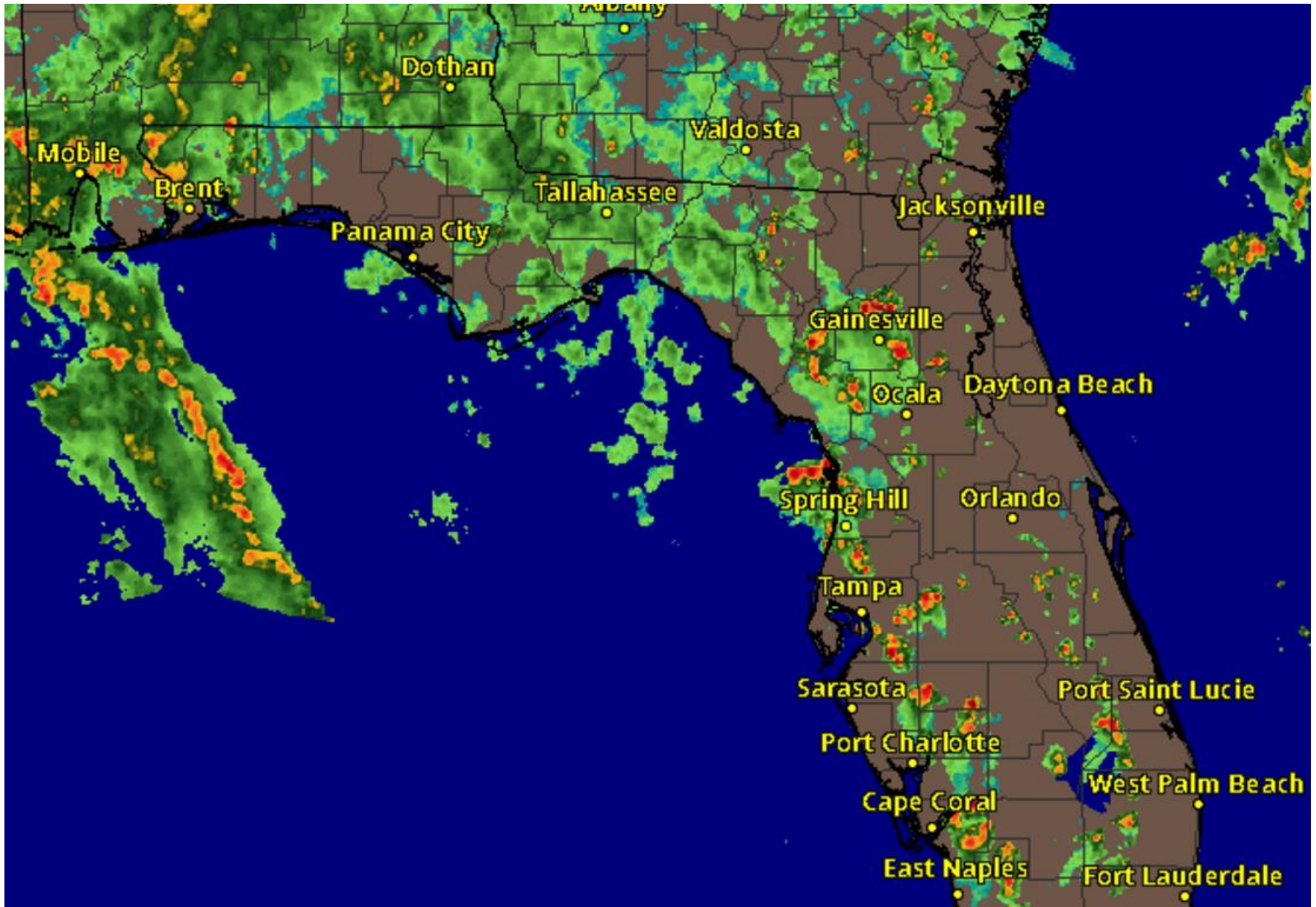
Sustained Winds:

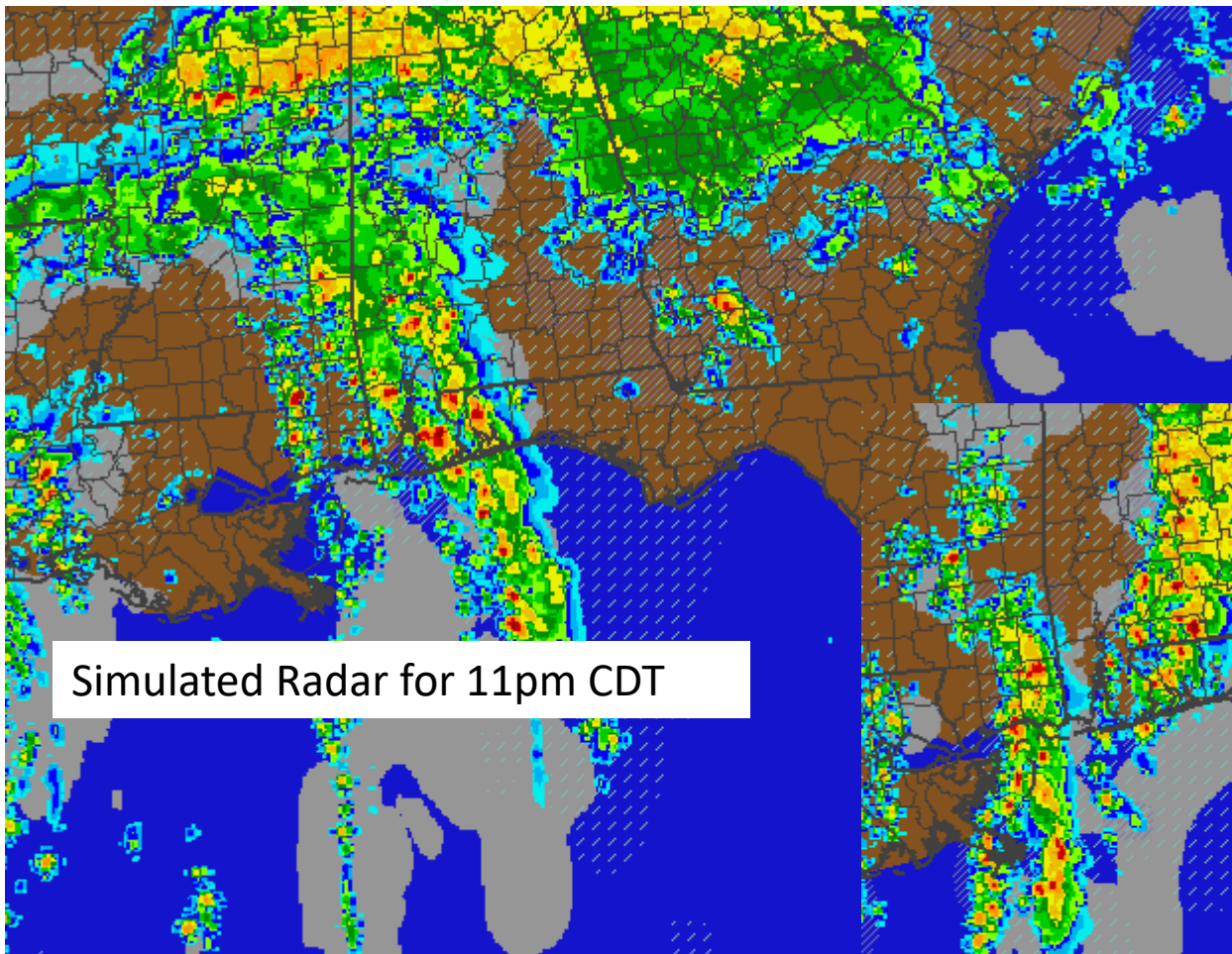
- Hurricane Force
- Tropical Storm Force

Position:

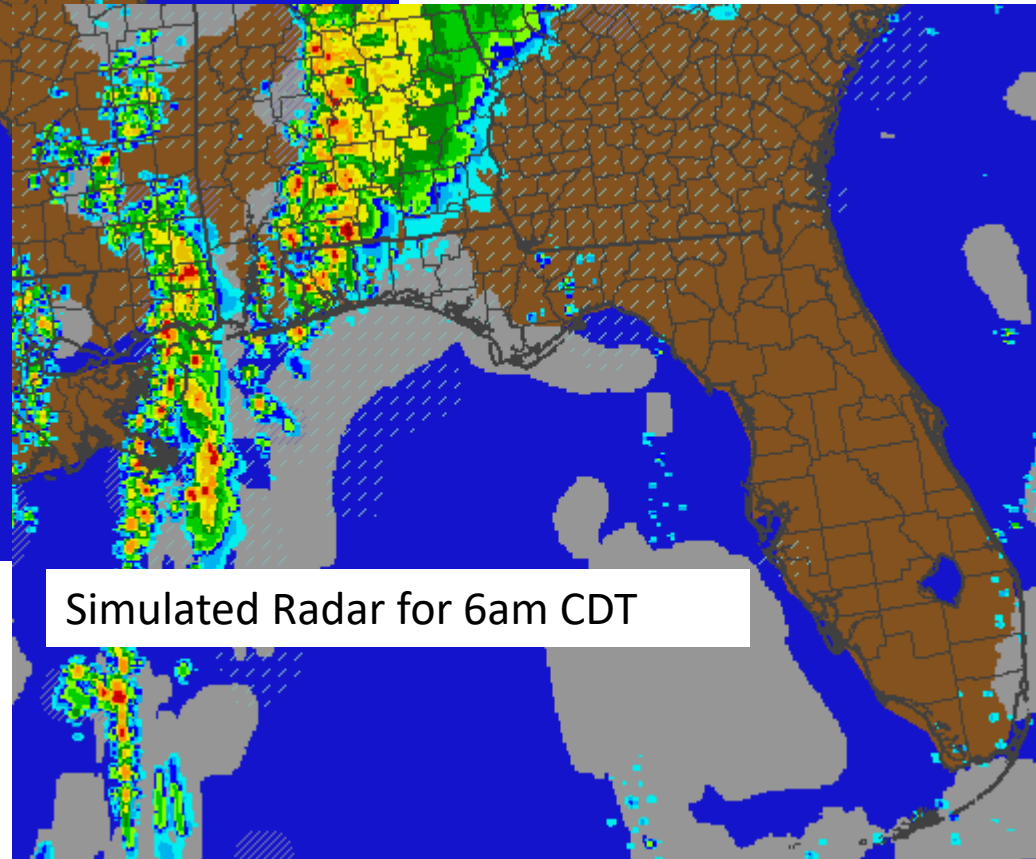
- Center as of 400 PM CDT
- Past Track

State Radar as of 4:40pm EDT





Simulated Radar for 11pm CDT



Simulated Radar for 6am CDT

Additional rain bands may impact the far western Panhandle overnight into early tomorrow morning.



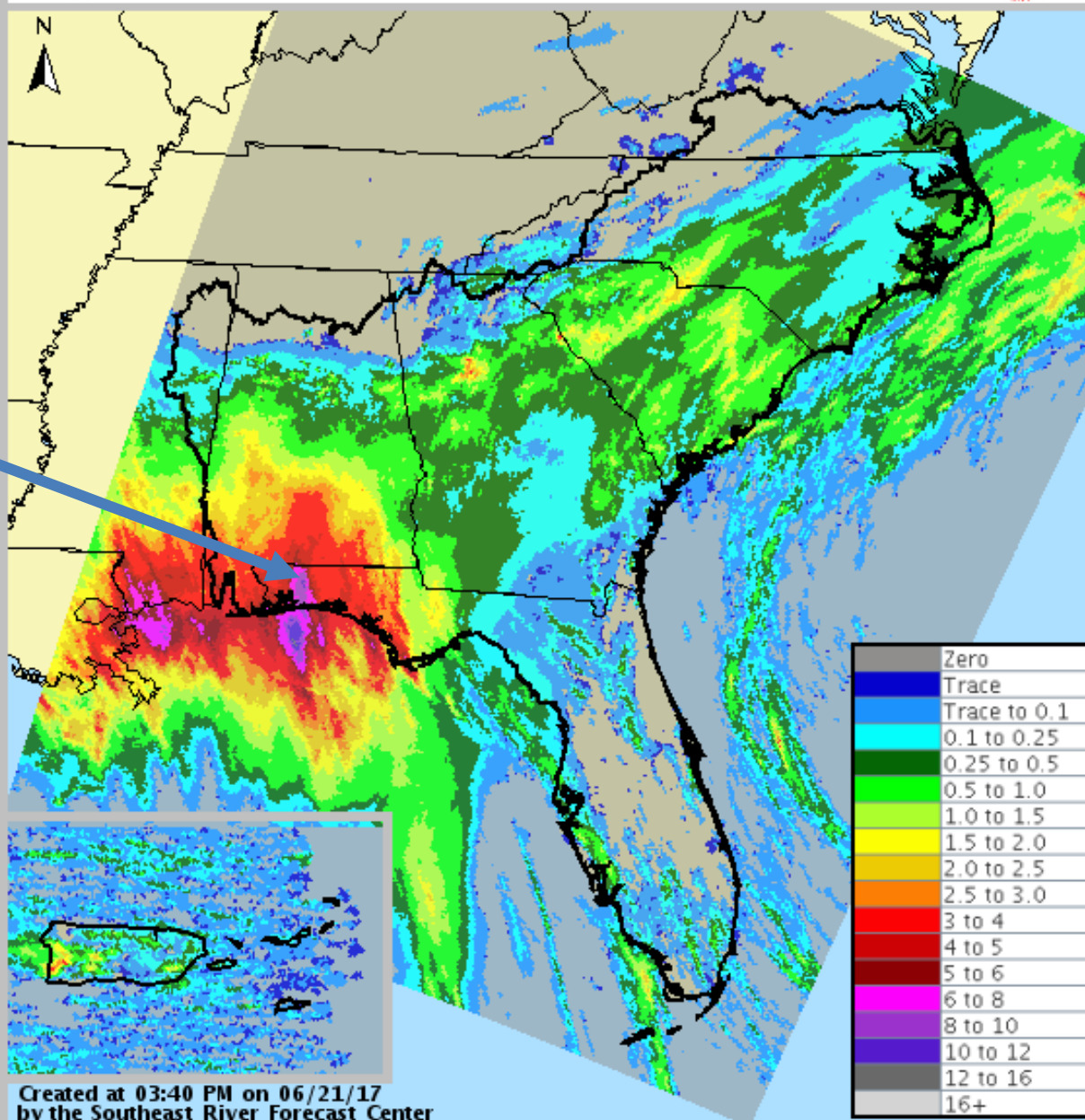
24-hour Precipitation

Ending Jun 21, 2017 at 3 pm

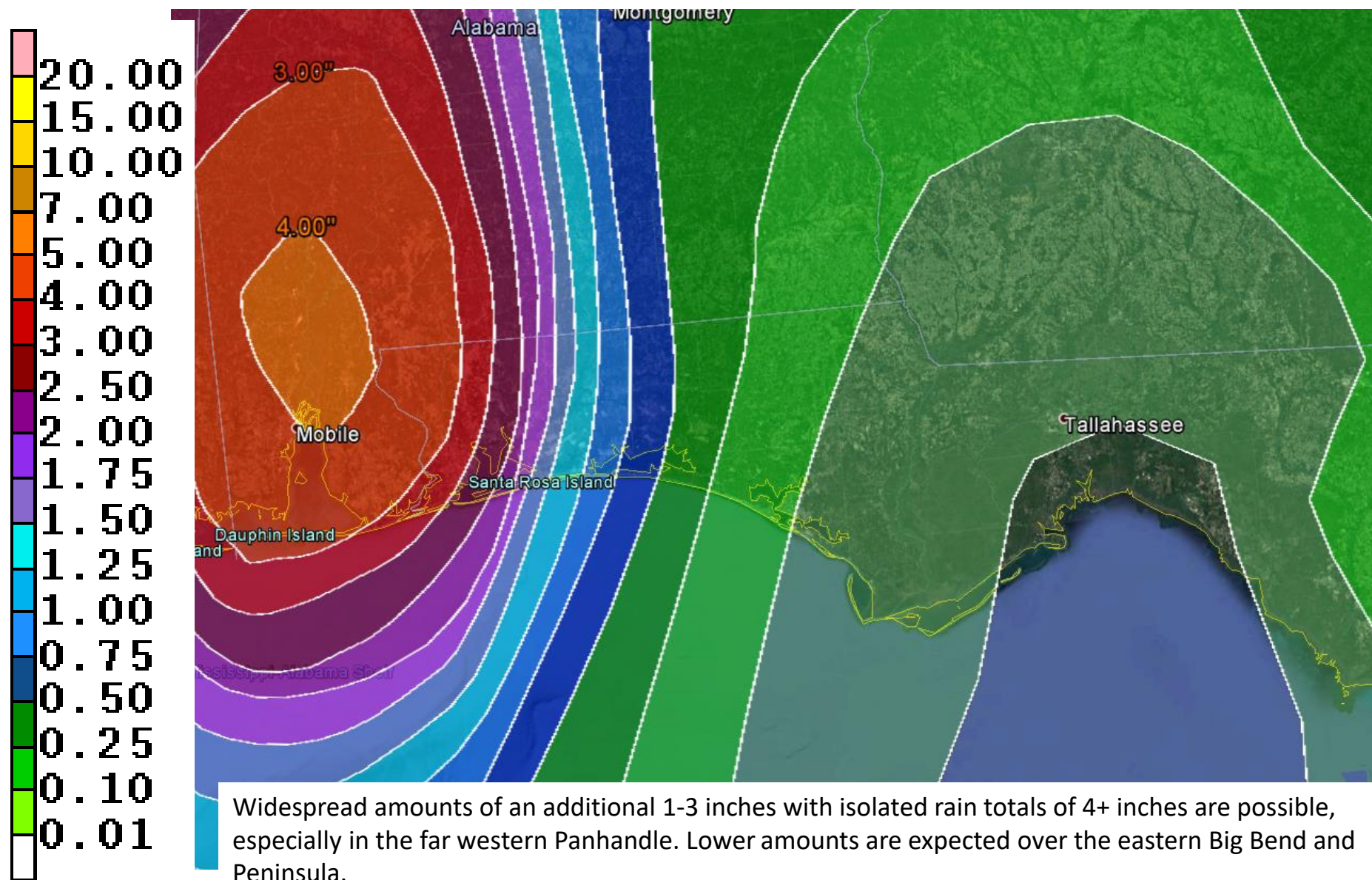


Widespread
3-6" over the
Panhandle
the last 24
hours with
locally higher
amounts.

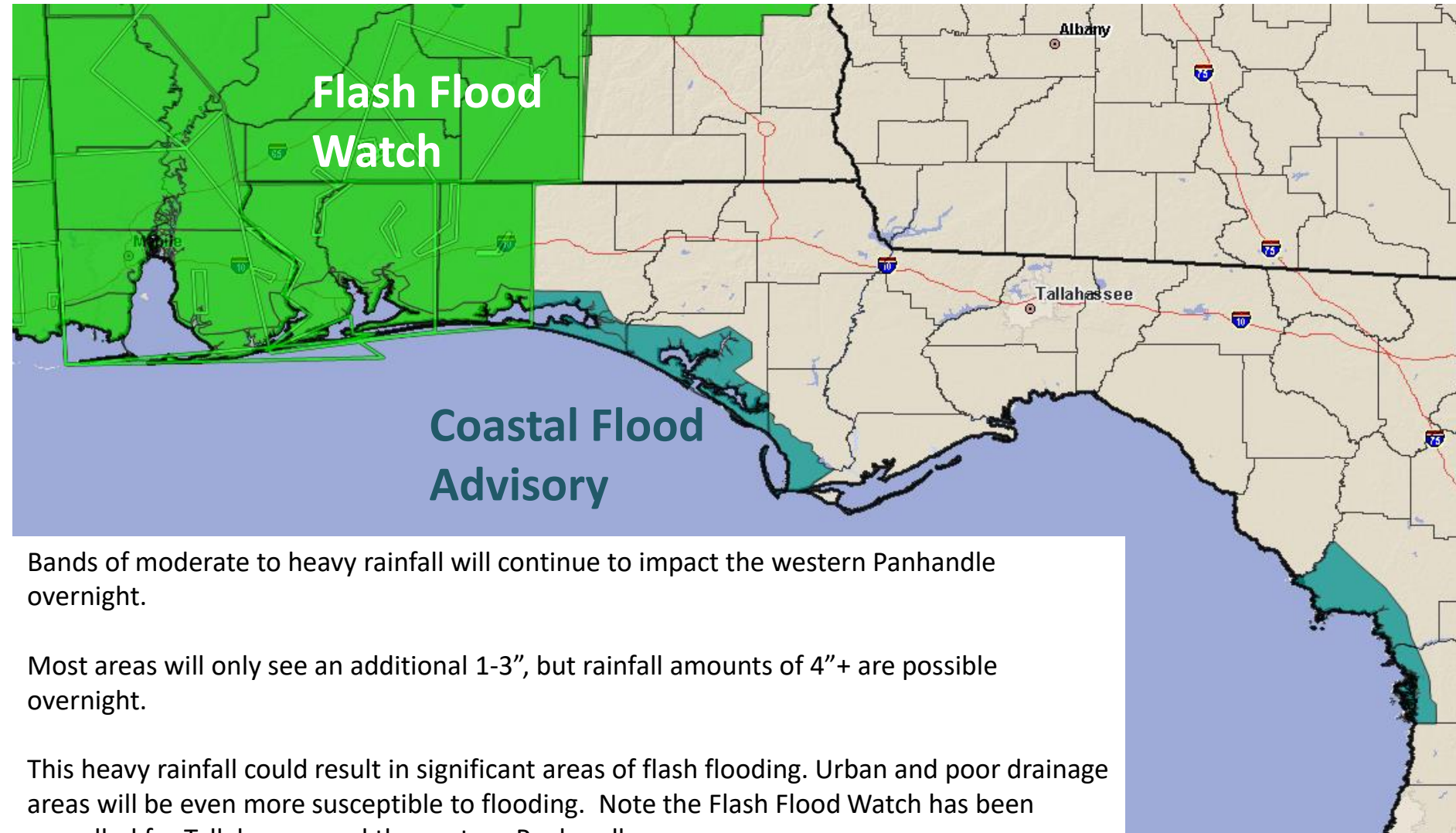
6-8"



Forecast Total Rainfall Accumulations for next 2 Days



Flash Flood Watch In Effect through Thursday



Bands of moderate to heavy rainfall will continue to impact the western Panhandle overnight.

Most areas will only see an additional 1-3", but rainfall amounts of 4"+ are possible overnight.

This heavy rainfall could result in significant areas of flash flooding. Urban and poor drainage areas will be even more susceptible to flooding. Note the Flash Flood Watch has been cancelled for Tallahassee and the eastern Panhandle.



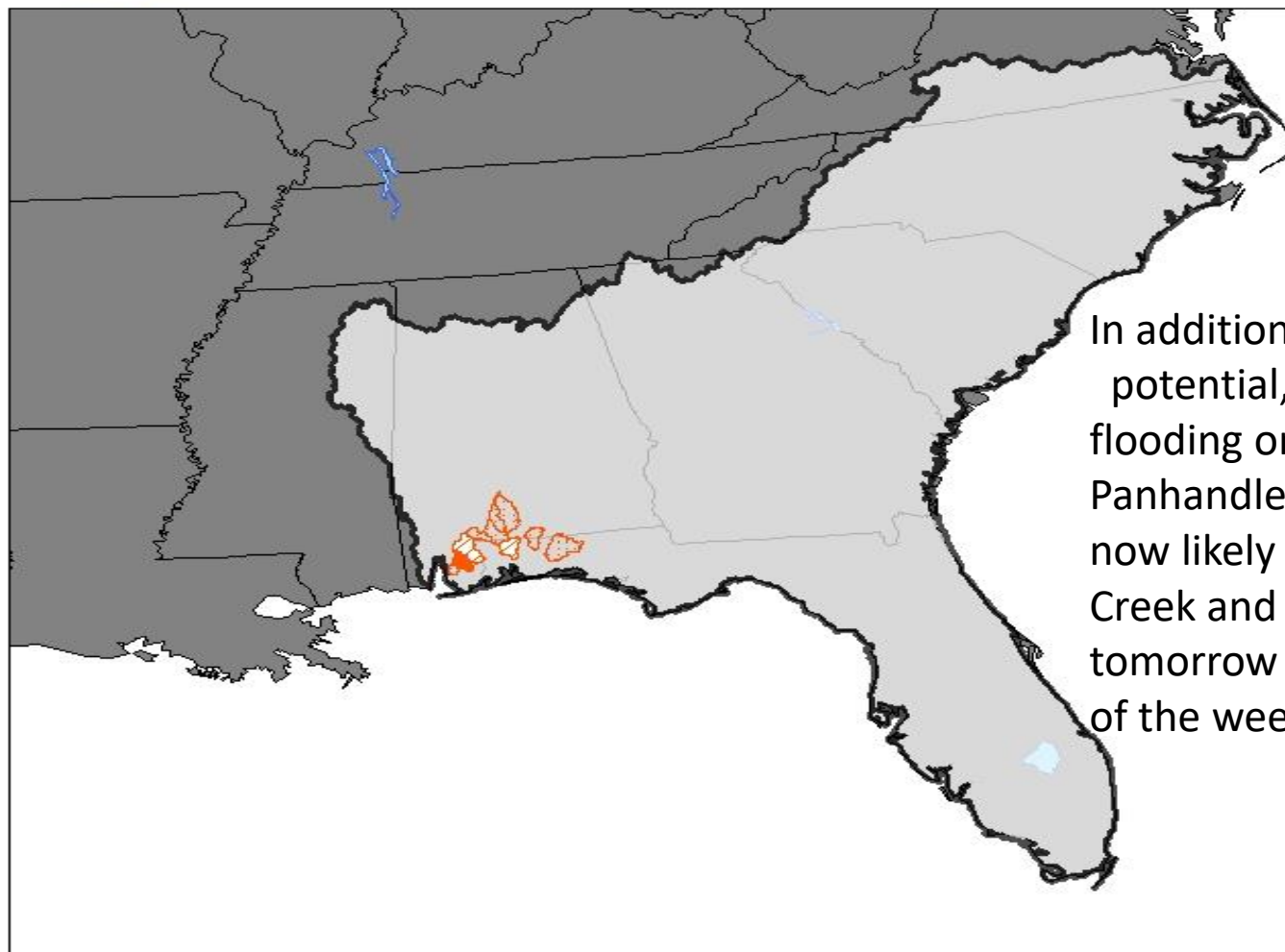
Significant River Flood Outlook



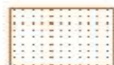
Valid: 6/21/2017 - 6/26/2017

Southeast River Forecast Center

6/21/2017 12:16:48 PM



In addition to the flash flooding potential, minor to moderate flooding on area rivers in the Panhandle will be possible and is now likely on the Big Coldwater Creek and Perdido River starting late tomorrow and lasting into the start of the weekend.



**SIGNIFICANT RIVER
FLOODING POSSIBLE.**



**SIGNIFICANT RIVER
FLOODING LIKELY.**

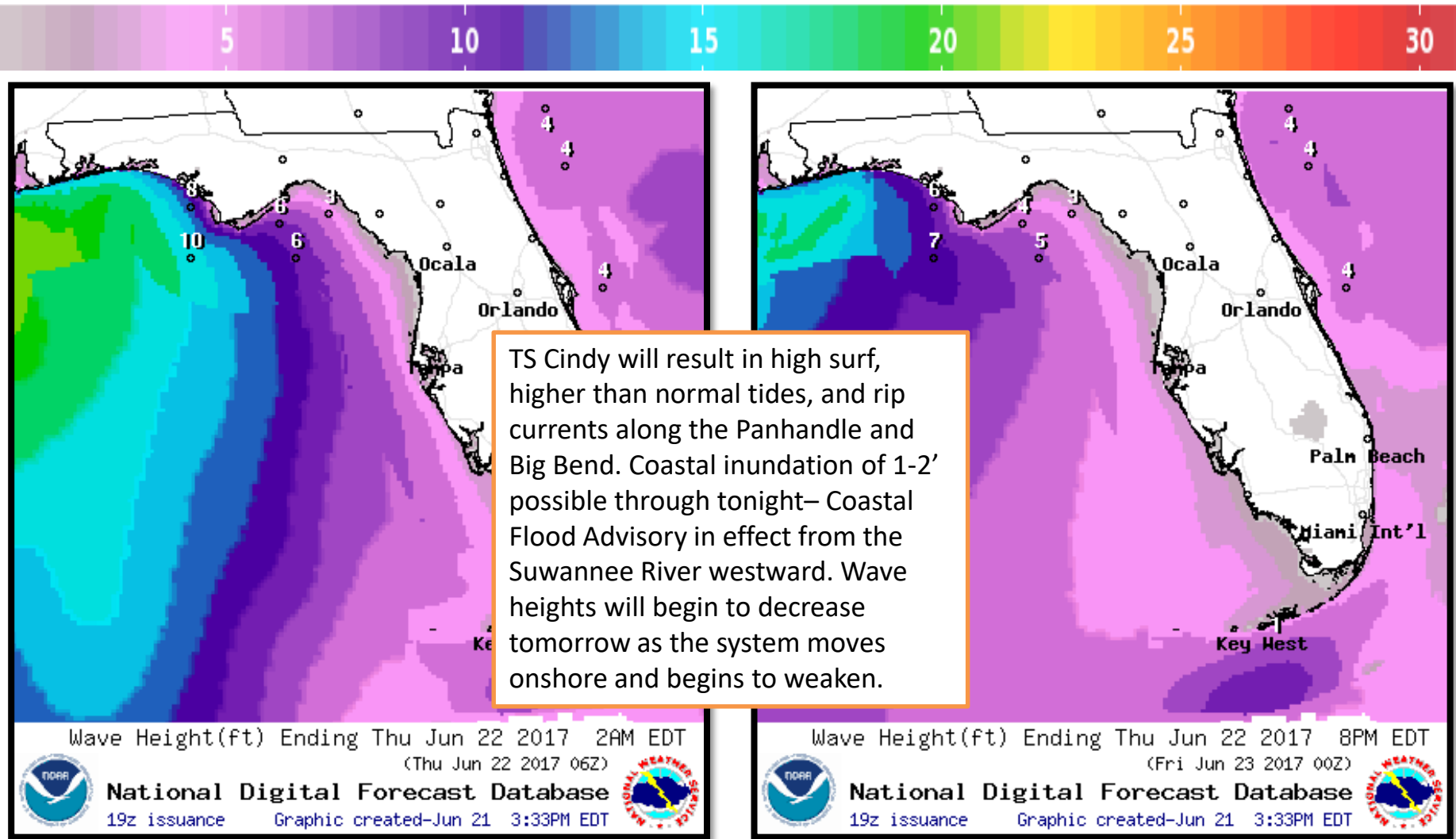


**SIGNIFICANT RIVER
FLOODING OCCURRING
OR IS IMMINENT.**

Significant River Flooding Impacts include:
Roads adversely affected. Residential,
commercial, industrial, and/or agricultural
areas affected. May require evacuation of people.

NOTE: Flash Flooding or Minor River Flooding
will NOT be included in this outlook.

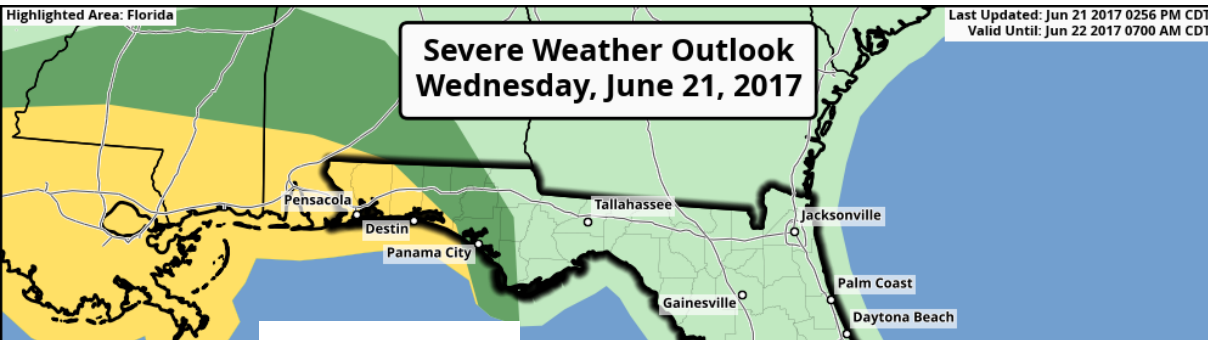
Forecast Wave Heights (feet) – Tonight & Thursday



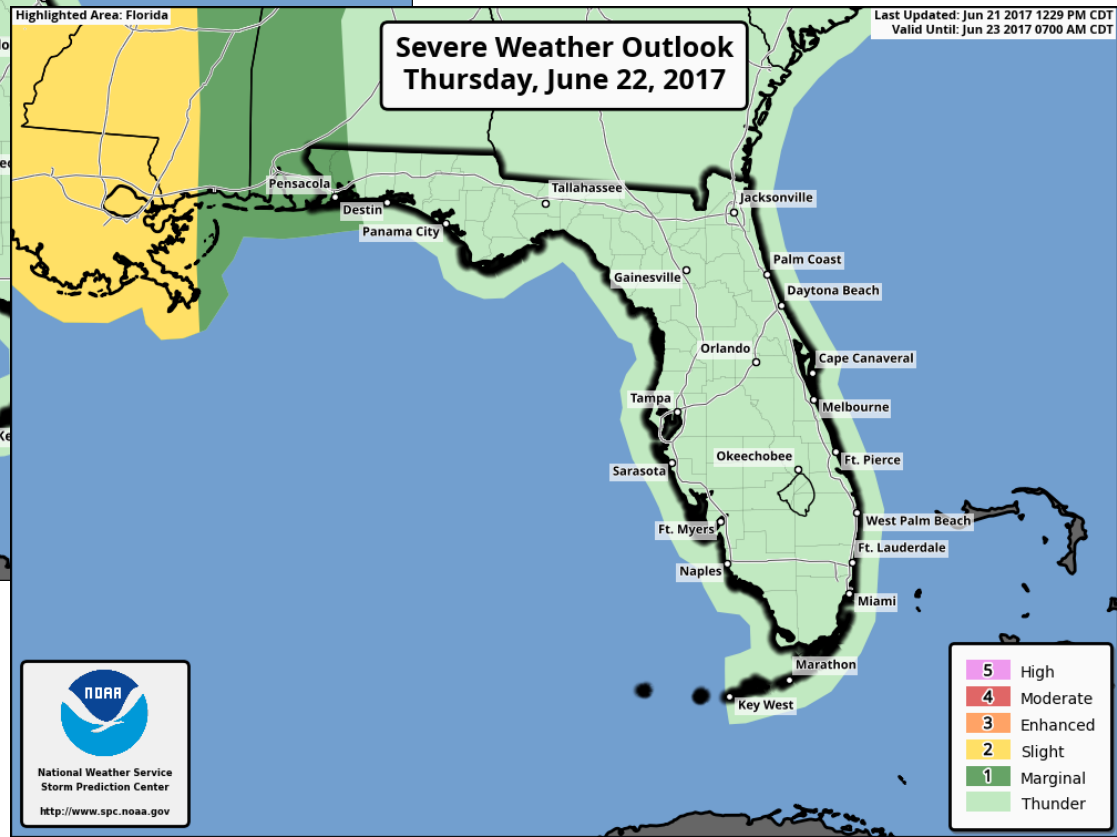
Tonight

Thursday

Marginal to slight risk for isolated tornadoes through Thursday



*Includes
Tonight*

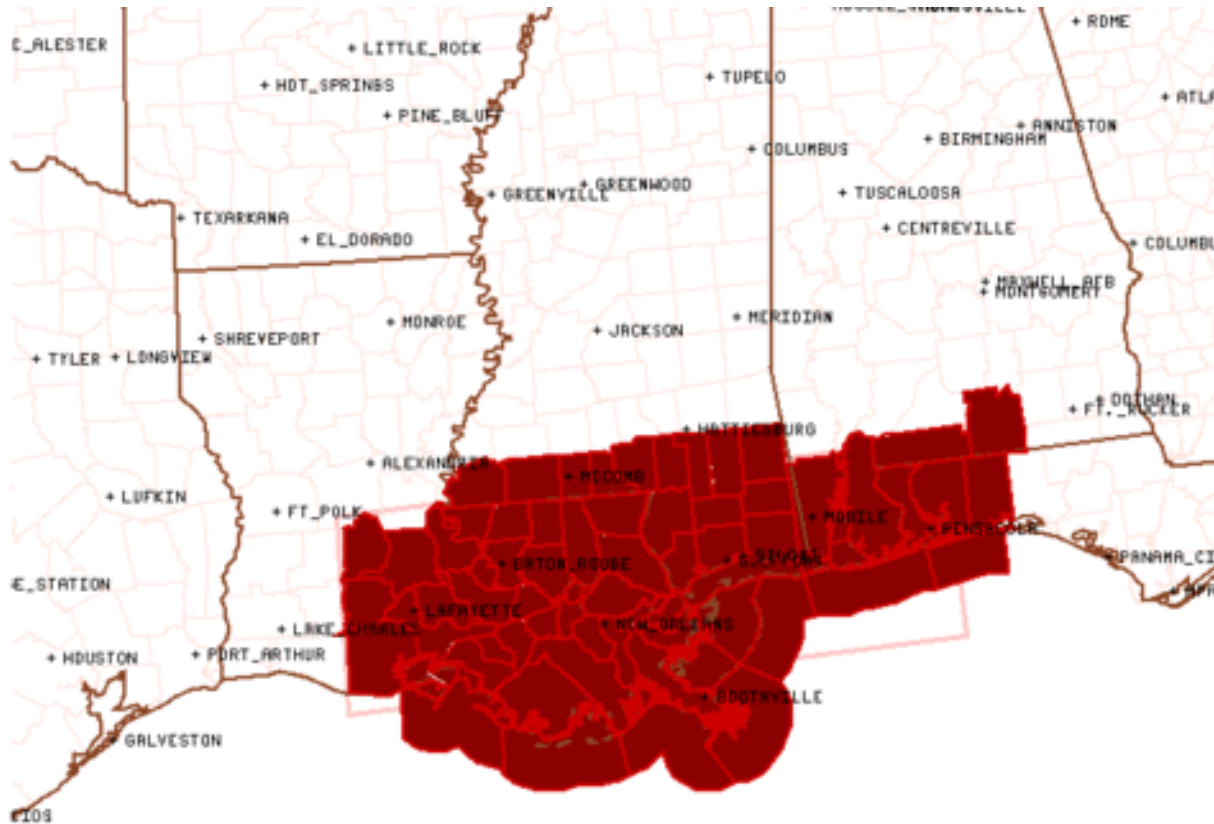


5	High
4	Moderate
3	Enhanced
2	Slight
1	Marginal
	Thunder



5	High
4	Moderate
3	Enhanced
2	Slight
1	Marginal
	Thunder

Tornado Watch Until 7 PM CDT



This tornado watch includes Escambia, Santa Rosa, and Okaloosa counties. An additional tornado watch for these counties may be issued for the remainder of the night.



Tornado Watch # 359 - Valid from 1000 AM until 700 PM CDT

Summary

- As of 5pm EDT Wednesday, Tropical Storm Cindy was located about 125 miles southeast of Galveston, Texas, or 400 miles west-southwest of Pensacola, Florida.
- Maximum sustained winds are near 50 mph as Cindy is moving to the northwest at 9 mph.
- Cindy is expected to make landfall near the Texas/Louisiana border as a tropical storm late tonight/early tomorrow morning. Cindy is not expected to change much in strength before landfall.
- However, upper level winds will continue to push a majority of the associated storminess well to the east of the center of the system.
- No additional tropical development is expected within the next 5 days.

Florida Outlook:

- The main threat to Florida from TS Cindy continues to be heavy rainfall.
- Additional widespread rainfall amounts of 1-3" are expected along the western Panhandle, with locally higher amounts of 4+" possible. Flash Flood Watches are in effect through tomorrow.
- Increased wave heights of 4-8' are also expected along the Panhandle coast and may lead to minor coastal flooding at times of high tide along with a high risk of rip currents. A Coastal Flood Advisory is in effect for the Panhandle and Big Bend coast west of the Suwannee River as tides may run 1-2' above normal. Wave heights will begin to decrease tomorrow as tides return to normal.
- A marginal risk for isolated tornadoes/waterspouts exists for coastal portions of the western Panhandle through the night. A Tornado Watch continues to be in effect.
- River flooding will be a concern starting tomorrow and may last into the weekend.

Another briefing packet will be issued Thursday morning. For more information on this system visit the NHC website at www.nhc.noaa.gov



TROPICAL UPDATE

Created by:

Michael Spagnolo, Deputy State Meteorologist
Michael.spagnolo@em.myflorida.com

State Meteorological Support Unit
Florida Division of Emergency
Management

Users wishing to subscribe (approval pending) to this distribution list, register at https://public.govdelivery.com/accounts/FLDEM/subscriber/new?topic_id=SERT_Met_Tropics.

Other reports available for subscription are available at <https://public.govdelivery.com/accounts/FLDEM/subscriber/new?preferences=true>