



# **TROPICAL UPDATE**

**8 AM EDT**

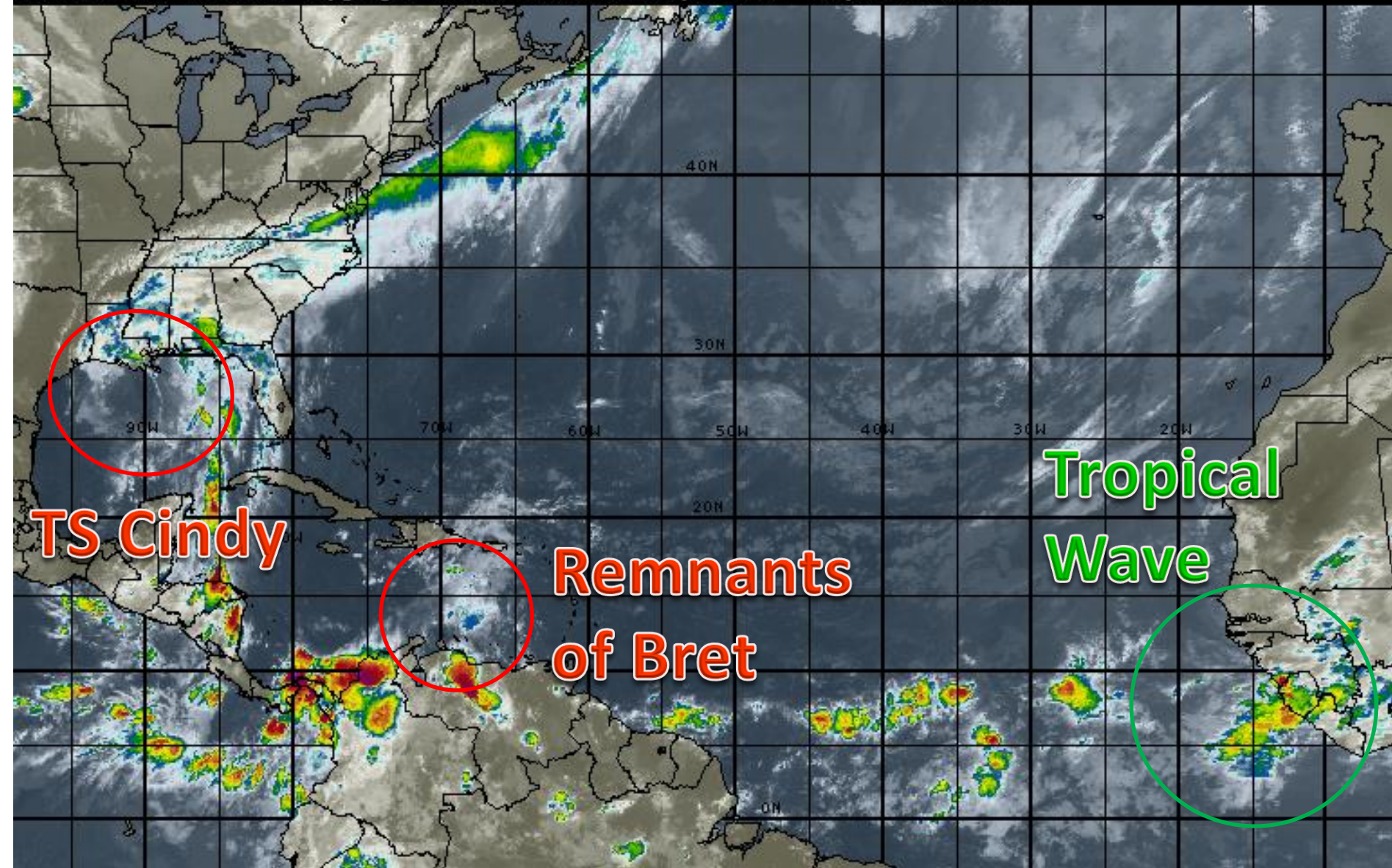
**Wednesday, June 21, 2017**

**Tropical Storm Cindy**

**This update is intended for government and emergency response officials, and is provided for informational and situational awareness purposes only. Forecast conditions are subject to change based on a variety of environmental factors. For additional information, or for any life safety concerns with an active weather event please contact your County Emergency Management or Public Safety Office, local National Weather Service forecast office or visit the National Hurricane Center website at [www.nhc.noaa.gov](http://www.nhc.noaa.gov).**

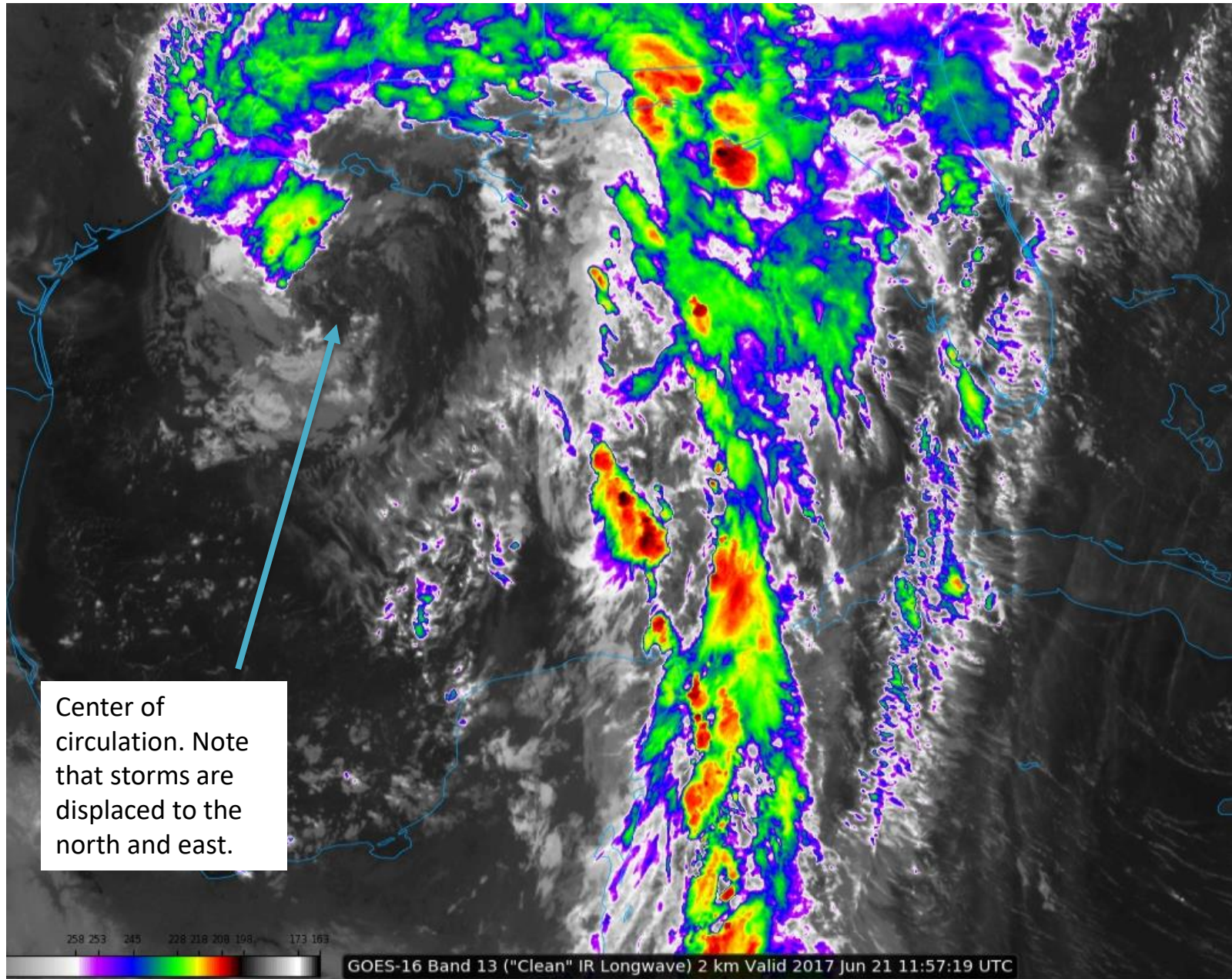
# Atlantic Basin Satellite Image

09:00 21-JUN-2017 GMT Copyright © 1998-2016 MSI Corporation <http://www.usi.com>





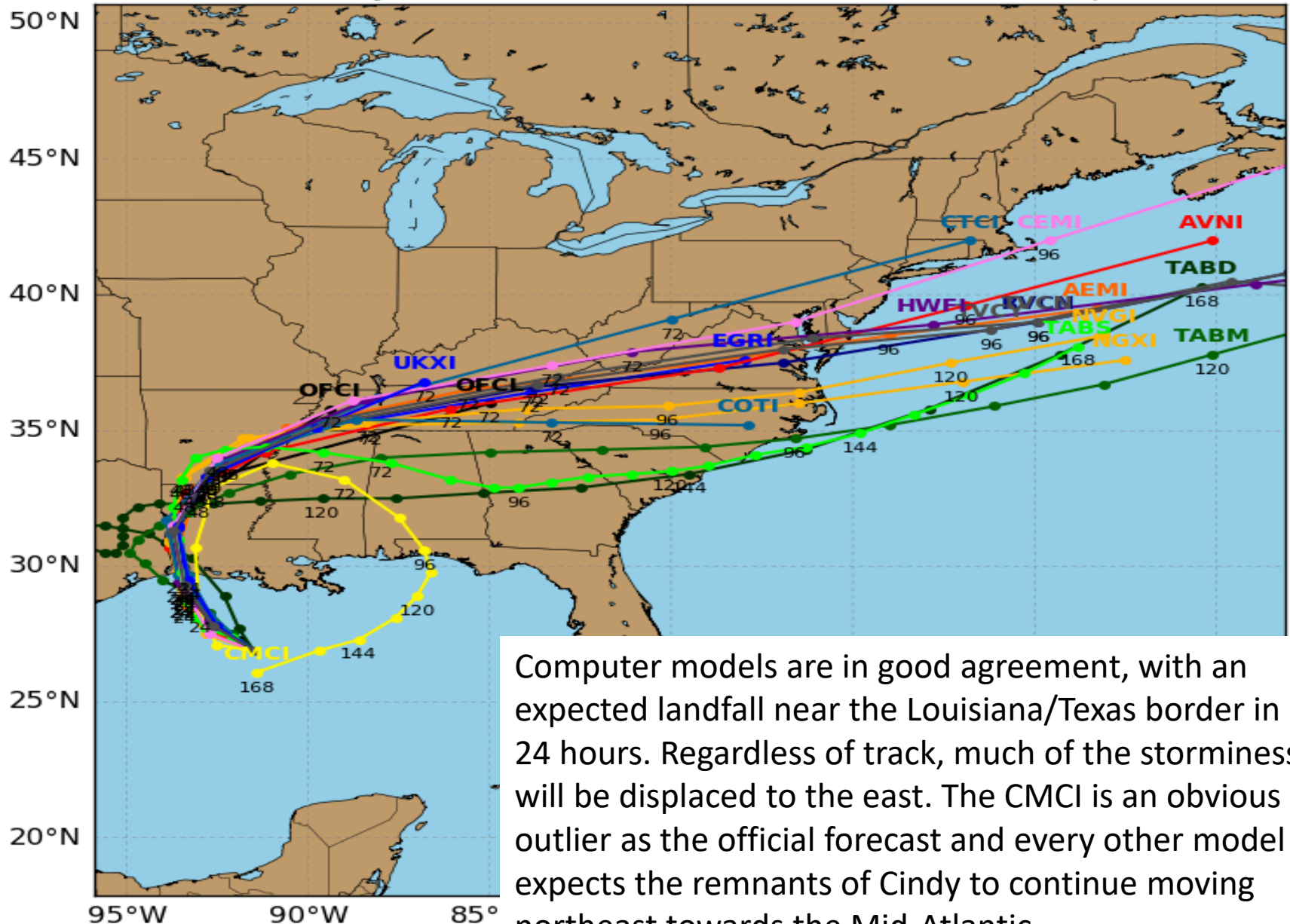
# Tropical Storm Cindy Satellite Image



# Tropical Storm CINDY Model Track Guidance

Initialized at 06z Jun 21 2017

Levi Cowan - tropicaltidbits.com

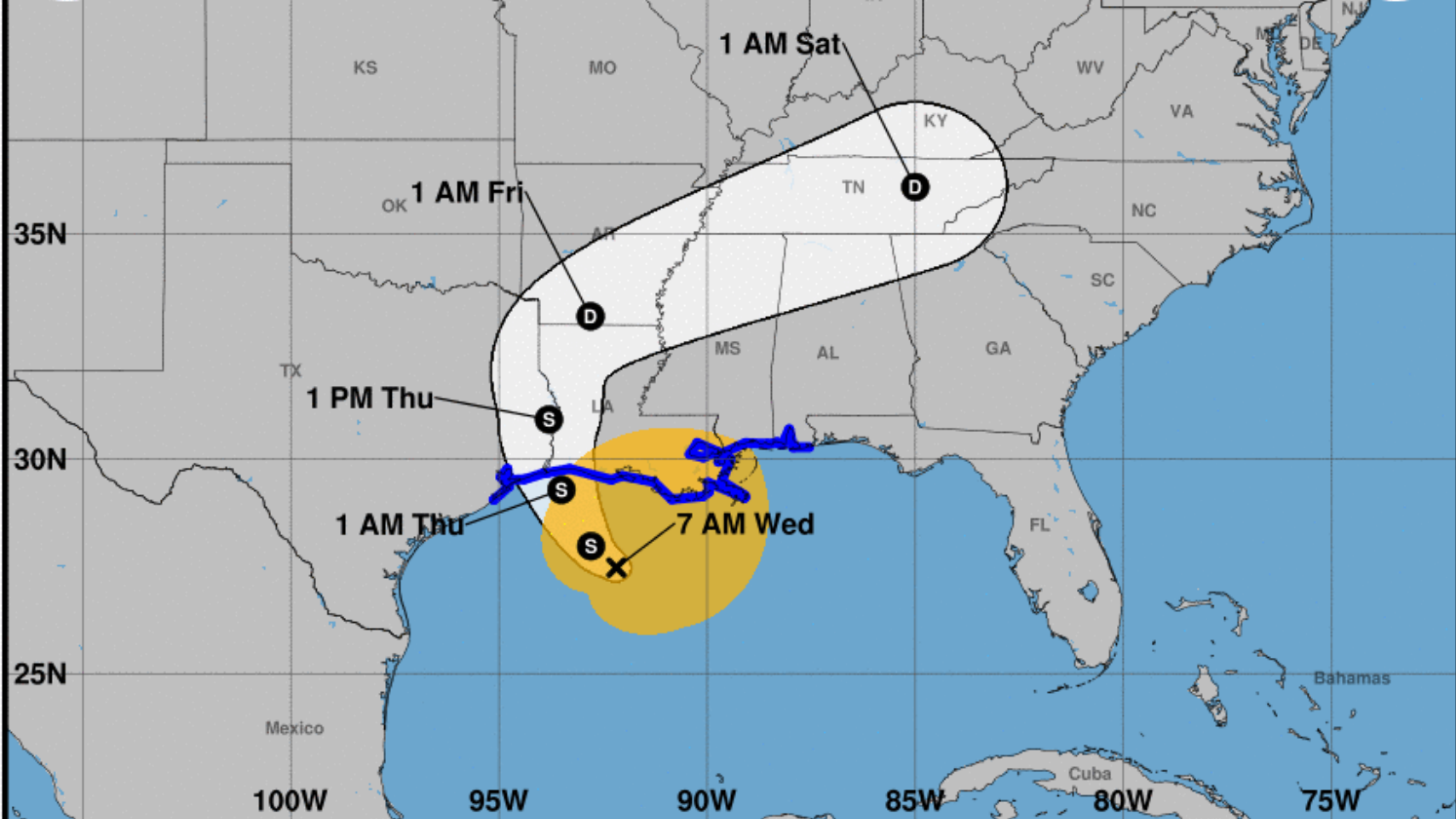


Computer models are in good agreement, with an expected landfall near the Louisiana/Texas border in 24 hours. Regardless of track, much of the storminess will be displaced to the east. The CMCI is an obvious outlier as the official forecast and every other model expects the remnants of Cindy to continue moving northeast towards the Mid-Atlantic.





Note: The cone contains the probable path of the storm center but does not show the size of the storm. Hazardous conditions can occur outside of the cone.



### Tropical Storm Cindy

Wednesday June 21, 2017

7 AM CDT Intermediate Advisory 7A

NWS National Hurricane Center

### Current information: x

Center location 27.5 N 92.2 W

Maximum sustained wind 60 mph

Movement NW at 8 mph

### Forecast positions:

● Tropical Cyclone ○ Post/Potential TC

Sustained winds: D < 39 mph

S 39-73 mph H 74-110 mph M > 110 mph

### Potential track area:



Day 1-3



Day 4-5

### Watches:



Hurricane



Trop Stm

### Warnings:



Hurricane



Trop Stm

### Current wind extent:



Hurricane



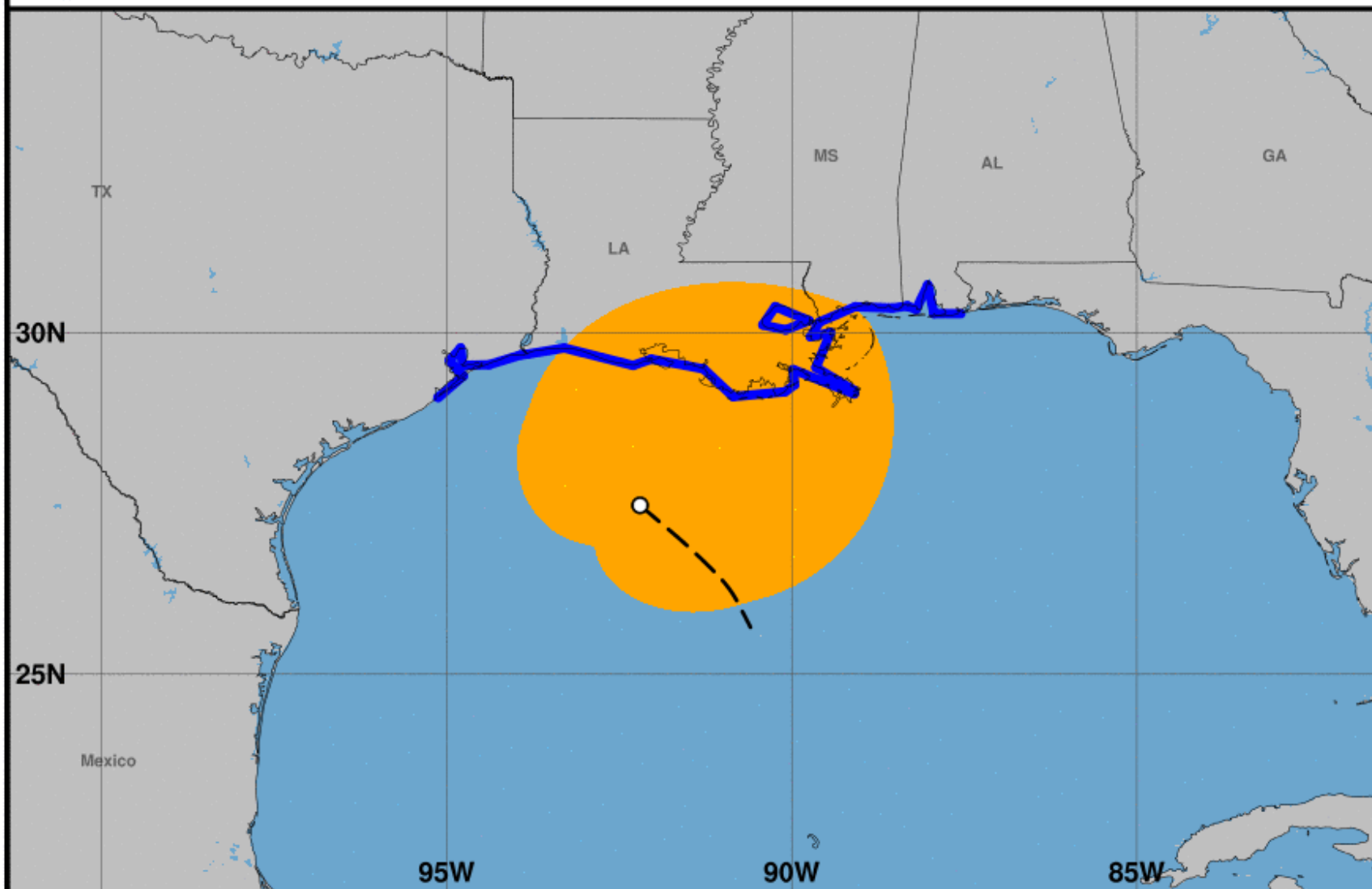
Trop Stm



# Surface Wind Field of Tropical Storm Cindy

Sustained Winds as of 700 AM CDT Wed Jun 21, 2017

Advisory Number 7A



## Watches:

- Hurricane Watch
- Tropical Storm Watch

## Warnings:

- Hurricane Warning
- Tropical Storm Warning

## Sustained Winds:

- Hurricane Force
- Tropical Storm Force

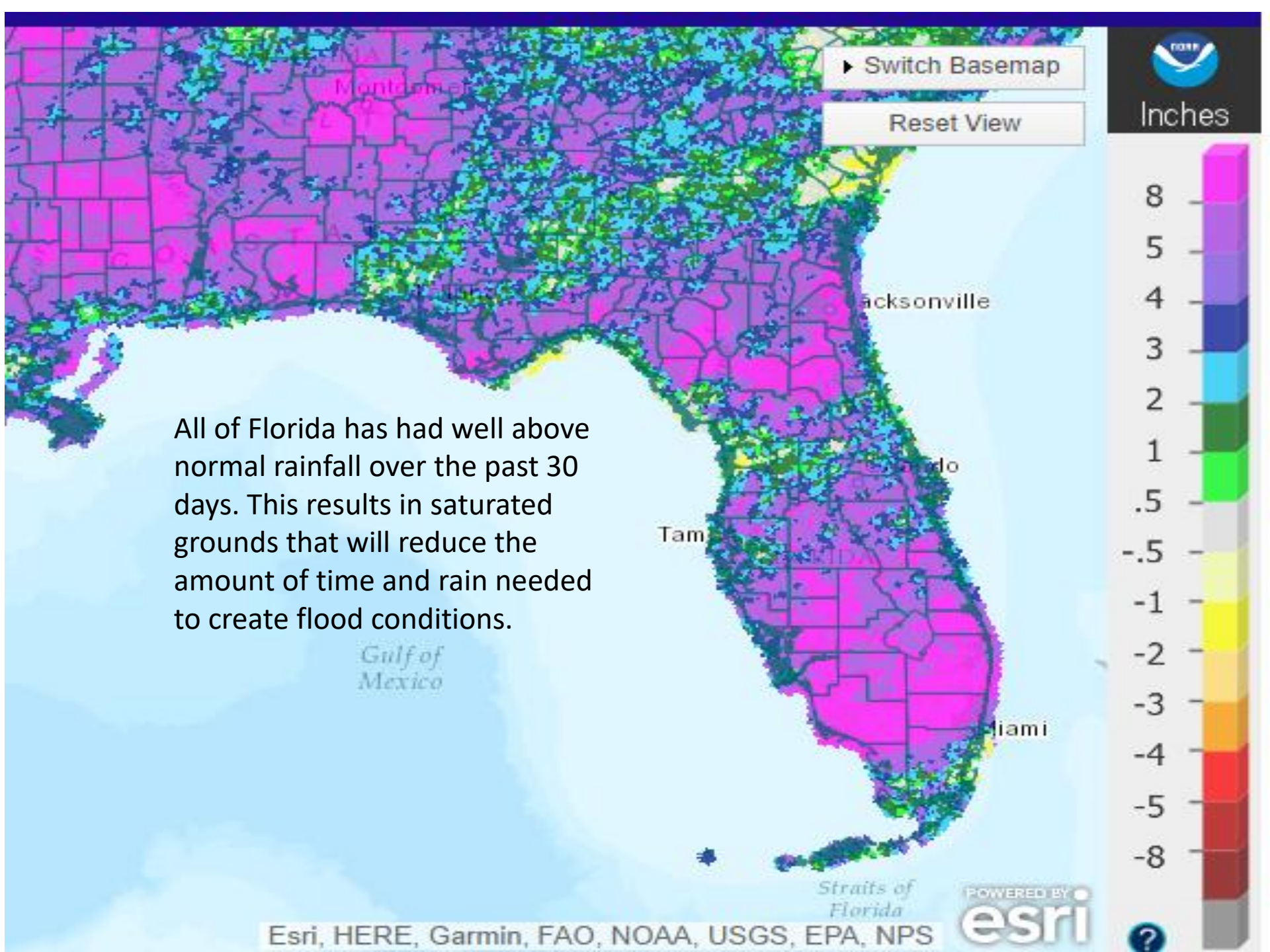
## Position:

- Center as of 700 AM CDT
- Past Track

# State Radar as of 8:30am EDT





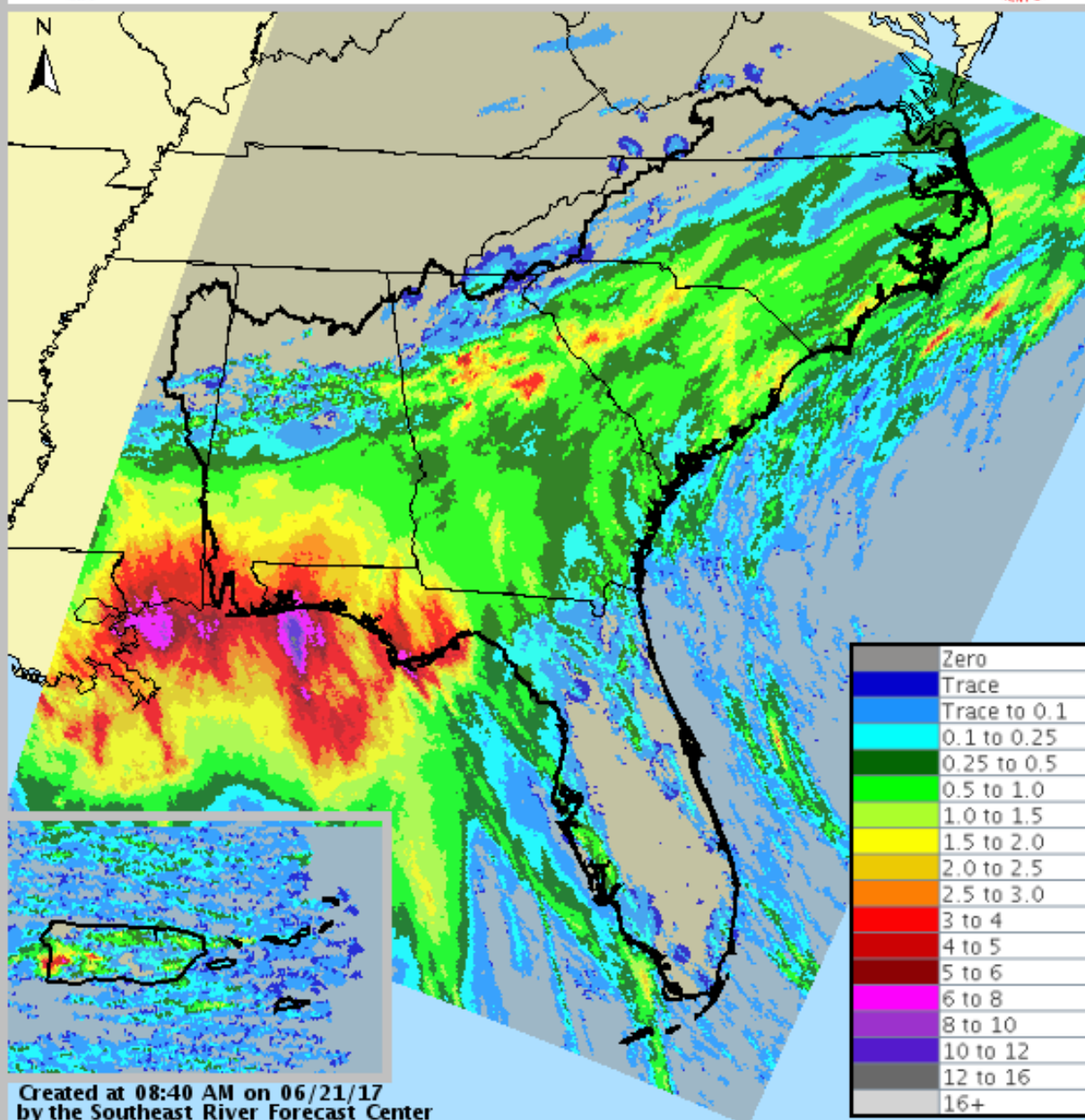






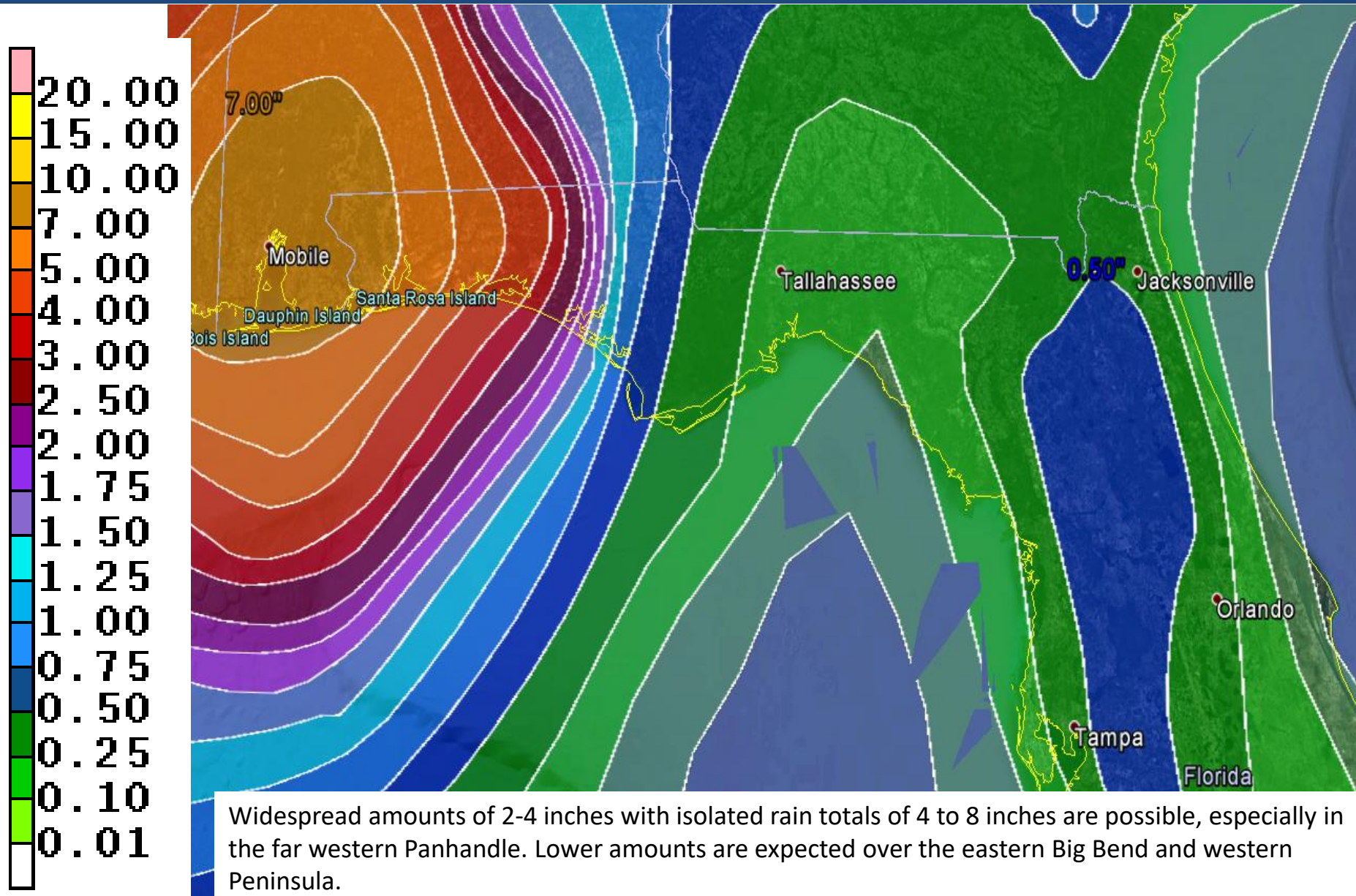
# 24-hour Precipitation

Ending Jun 21, 2017 at 8 am



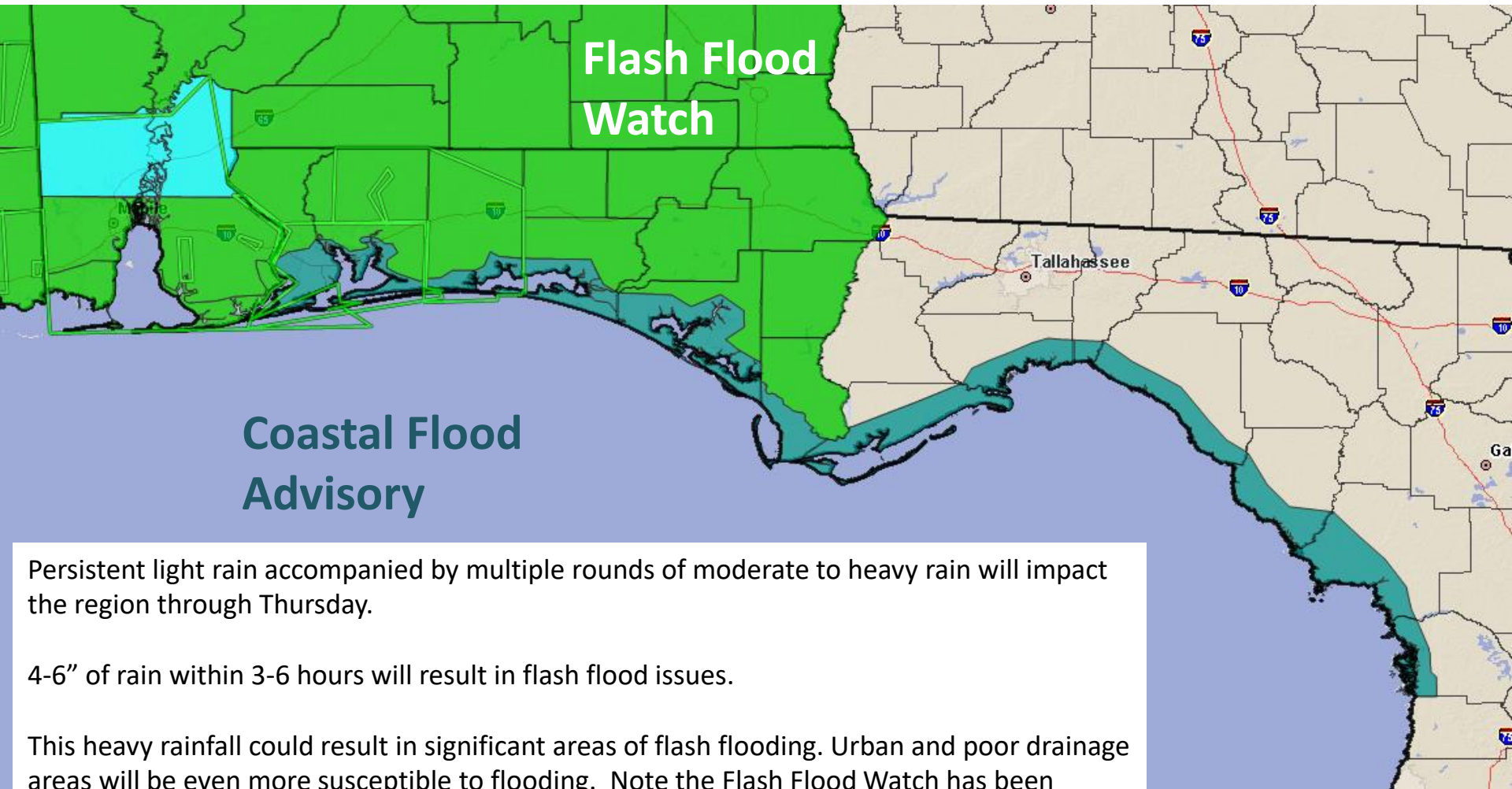
Widespread  
3-6" over the  
Panhandle  
and western  
Big Bend the  
last 24 hours.

# *Forecast Total Rainfall Accumulations for next 2 Days*





# Flash Flood Watch In Effect through Thursday



Persistent light rain accompanied by multiple rounds of moderate to heavy rain will impact the region through Thursday.

4-6" of rain within 3-6 hours will result in flash flood issues.

This heavy rainfall could result in significant areas of flash flooding. Urban and poor drainage areas will be even more susceptible to flooding. Note the Flash Flood Watch has been cancelled for Tallahassee.



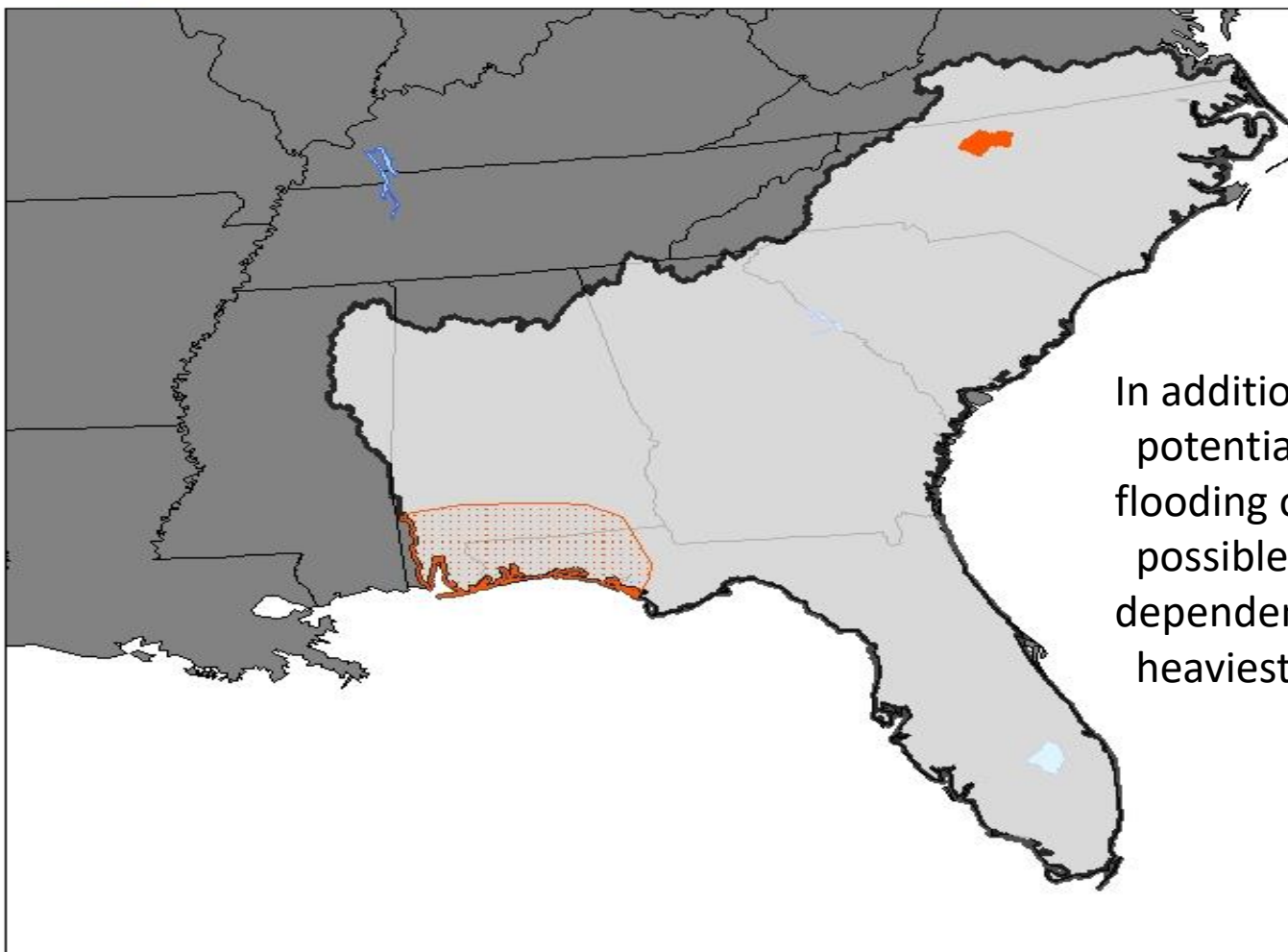
# Significant River Flood Outlook



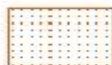
Valid: 6/20/2017 - 6/25/2017

Southeast River Forecast Center

6/20/2017 10:11:15 AM



In addition to the flash flooding potential, minor to moderate flooding on area rivers will be possible, but this will ultimately be dependent on where the heaviest rain falls.



**SIGNIFICANT RIVER  
FLOODING POSSIBLE.**



**SIGNIFICANT RIVER  
FLOODING LIKELY.**



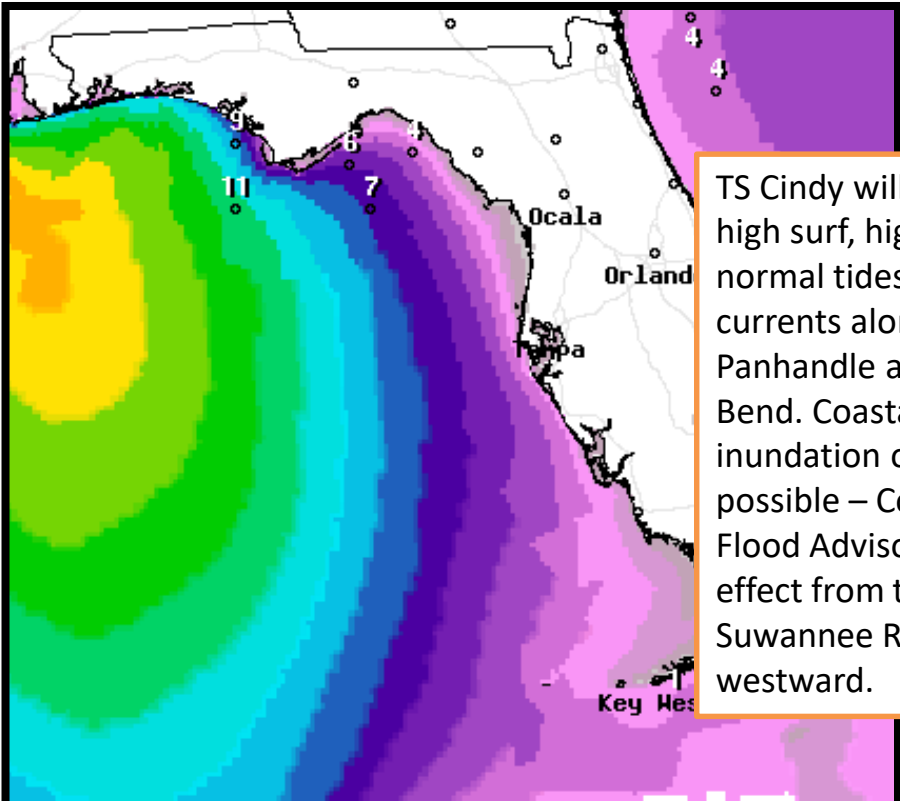
**SIGNIFICANT RIVER  
FLOODING OCCURRING  
OR IS IMMINENT.**

Significant River Flooding Impacts include:  
Roads adversely affected. Residential,  
commercial, industrial, and/or agricultural  
areas affected. May require evacuation of people.

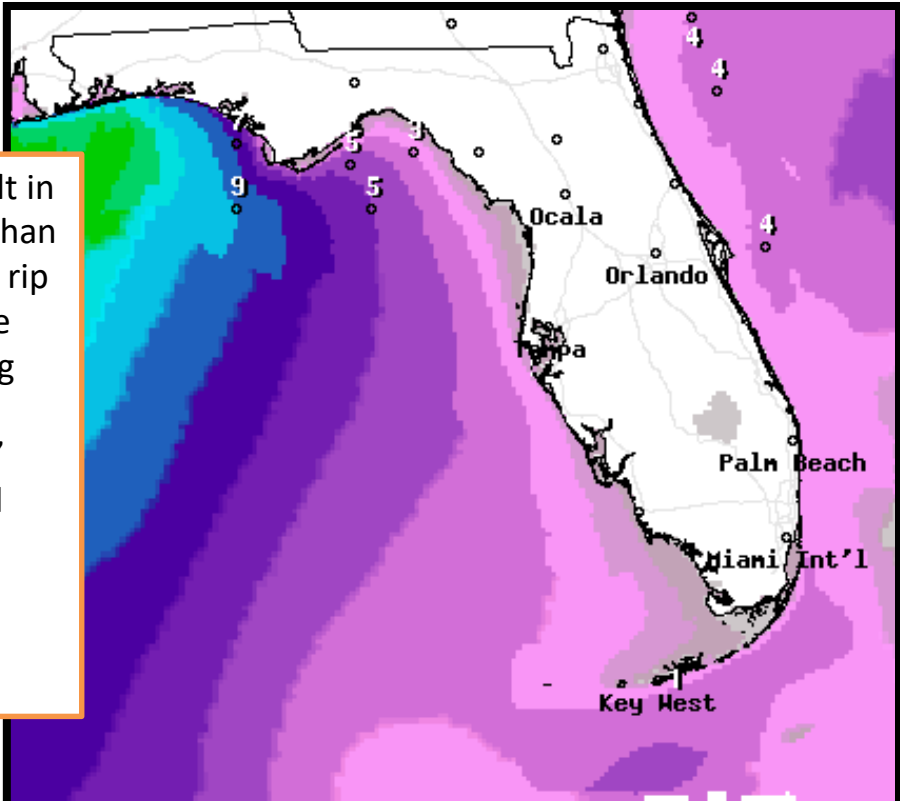
NOTE: Flash Flooding or Minor River Flooding  
will NOT be included in this outlook.



# Forecast Wave Heights (feet) –Tuesday & Wednesday



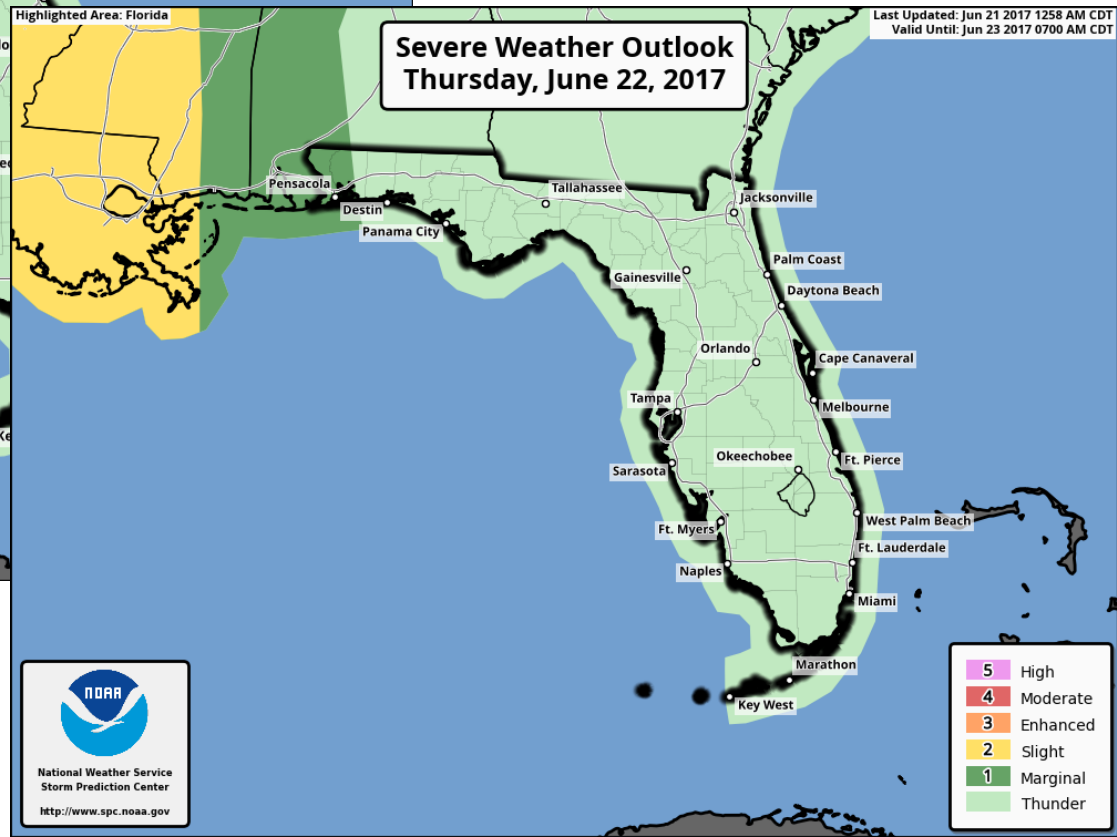
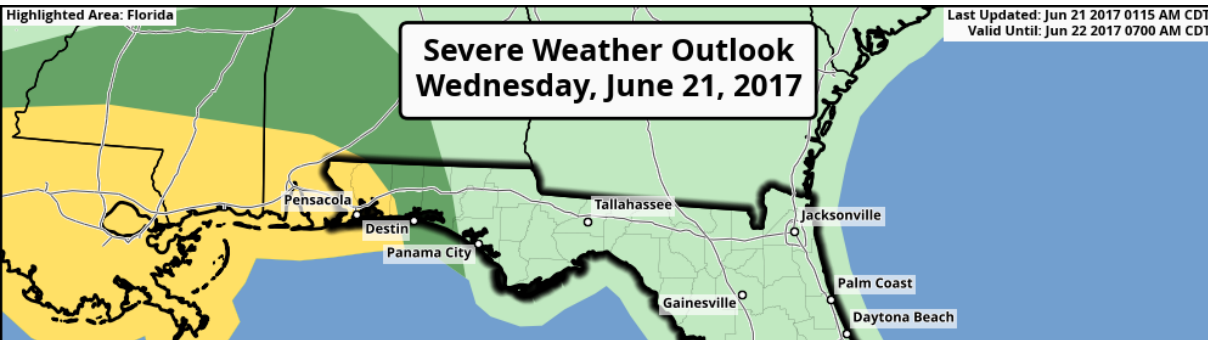
TS Cindy will result in high surf, higher than normal tides, and rip currents along the Panhandle and Big Bend. Coastal inundation of 1-2' possible – Coastal Flood Advisory in effect from the Suwannee River westward.



Today

Thursday

# Marginal to slight risk for isolated tornadoes through Thursday



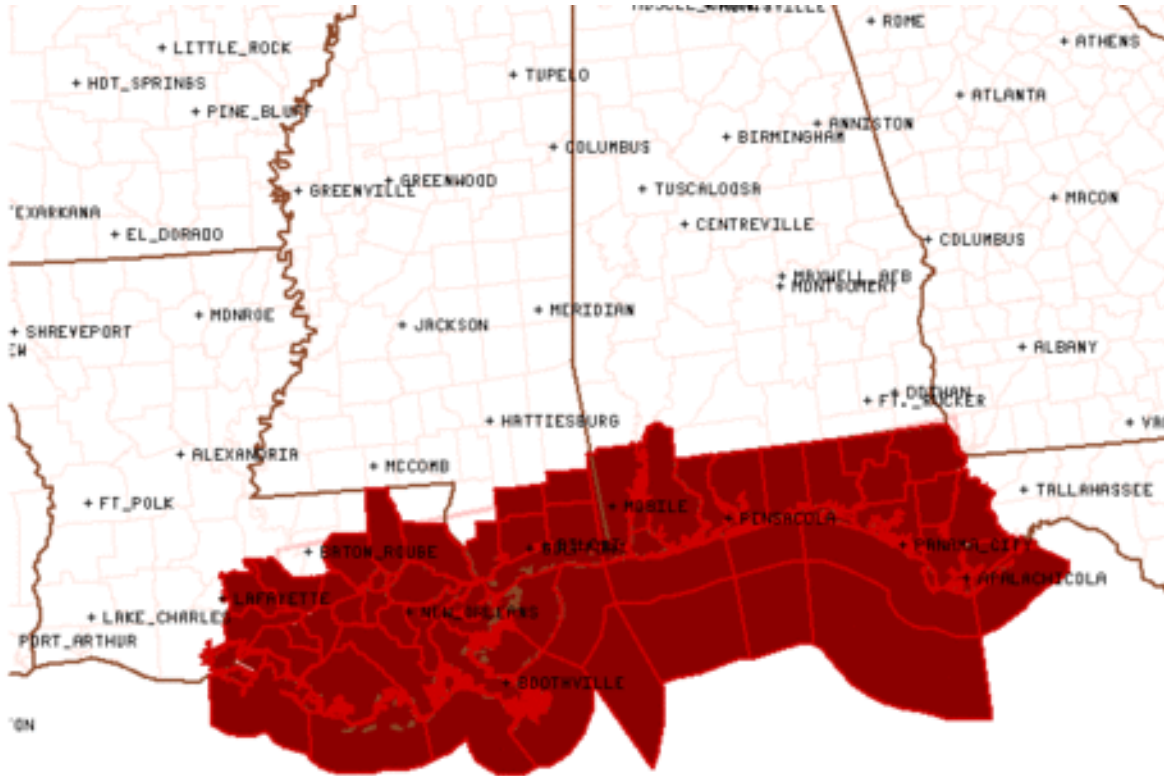
5	High
4	Moderate
3	Enhanced
2	Slight
1	Marginal
	Thunder



5	High
4	Moderate
3	Enhanced
2	Slight
1	Marginal
	Thunder



# Tornado Watch Until 10 AM CDT



An additional tornado watch will likely be issued for the remainder of the day for similar areas. The main concern is waterspouts briefly coming onshore.



**Tornado Watch # 358 - Valid from 1020 PM until 1000 AM CDT**

# Summary

- As of 8am EDT Wednesday, Tropical Storm Cindy was located about 200 miles southeast of Galveston, Texas, or 375 miles southwest of Pensacola, Florida
- Maximum sustained winds are near 60mph as Cindy is moving to the northeast at 8 mph.
- Cindy is expected to make landfall near the Texas/Louisiana border as a tropical storm late tonight. Cindy is not expected to change much in strength before landfall.
- However, upper level winds will continue to push a majority of the associated storminess well to the east of the center of the system.
- No additional tropical development is expected within the next 5 days.

## Florida Outlook:

- The main threat to Florida from TS Cindy continues to be heavy rainfall.
- Additional widespread rainfall amounts of 2-4" are expected along the Florida Panhandle, with locally higher amounts of 8+" possible. Flash Flood Watches are in effect from the Apalachicola River westward.
- Increased wave heights of 4-8' are also expected along the Panhandle coast and may lead to minor coastal flooding at times of high tide along with a high risk of rip currents. A Coastal Flood Advisory is in effect for the Panhandle and Big Bend coast west of the Suwannee River as tides may run 1-2' above normal.
- A marginal risk for isolated tornadoes/waterspouts exists for coastal portions of the Florida Panhandle through the day today. A Tornado Watch is expected to be in effect for most of today.
- River flooding will be a concern later this week into the weekend.

Another briefing packet will be issued Wednesday morning. For more information on this system visit the NHC website at [www.nhc.noaa.gov](http://www.nhc.noaa.gov)



# TROPICAL UPDATE

Created by:

Michael Spagnolo, Deputy State Meteorologist  
[Michael.spagnolo@em.myflorida.com](mailto:Michael.spagnolo@em.myflorida.com)

State Meteorological Support Unit  
Florida Division of Emergency  
Management

Users wishing to subscribe (approval pending) to this distribution list, register at [https://public.govdelivery.com/accounts/FLDEM/subscriber/new?topic\\_id=SERT\\_Met\\_Tropics](https://public.govdelivery.com/accounts/FLDEM/subscriber/new?topic_id=SERT_Met_Tropics).

Other reports available for subscription are available at <https://public.govdelivery.com/accounts/FLDEM/subscriber/new?preferences=true>