



# **TROPICAL UPDATE**

**5 PM EDT**

**Tuesday, June 20, 2017**

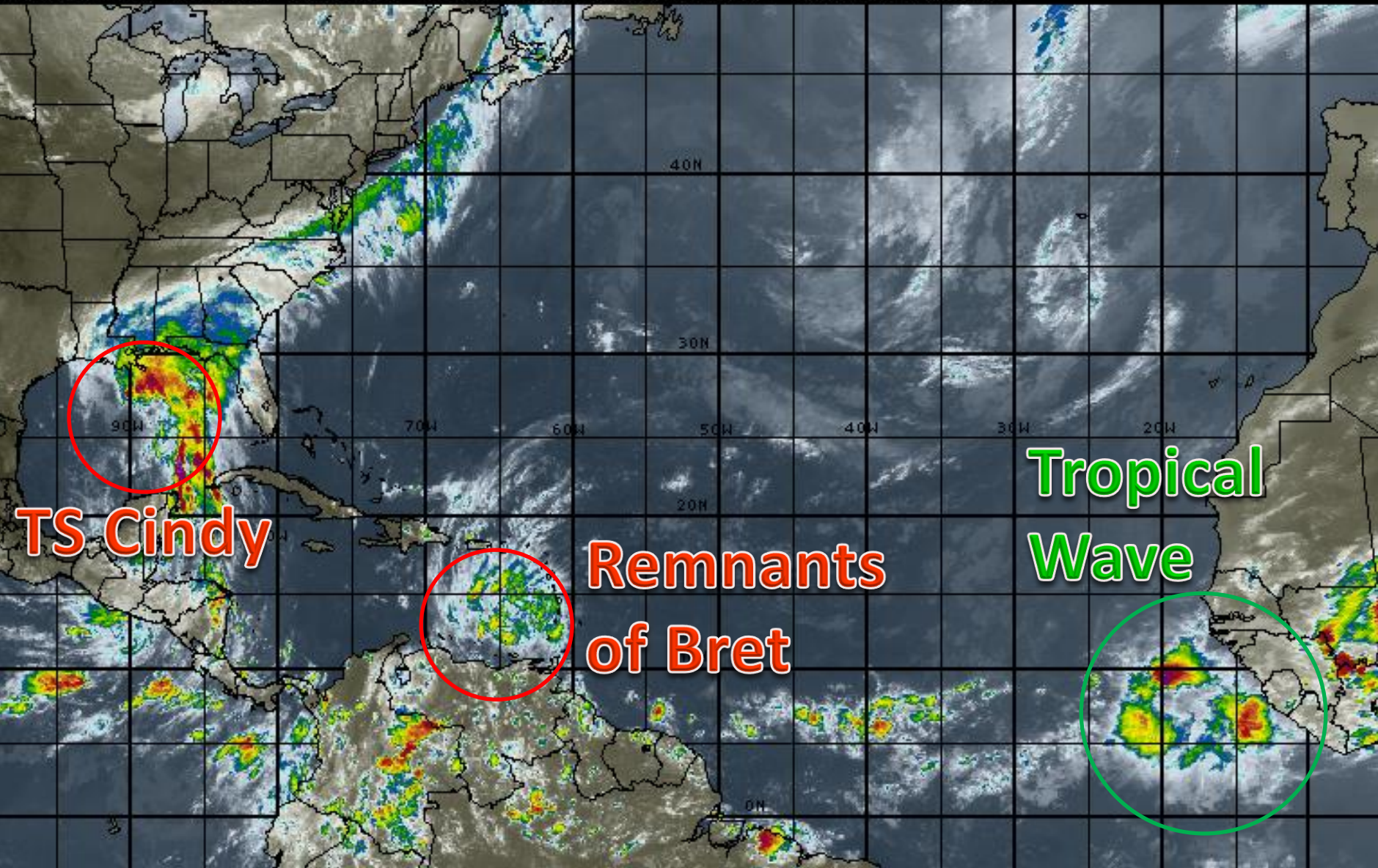
**Tropical Storm Cindy**

**(formerly Potential Tropical Cyclone #3)**

**This update is intended for government and emergency response officials, and is provided for informational and situational awareness purposes only. Forecast conditions are subject to change based on a variety of environmental factors. For additional information, or for any life safety concerns with an active weather event please contact your County Emergency Management or Public Safety Office, local National Weather Service forecast office or visit the National Hurricane Center website at [www.nhc.noaa.gov](http://www.nhc.noaa.gov).**

# Atlantic Basin Satellite Image

18:00 20-JUN-2017 GMT Copyright © 1998-2016 MSI Corporation <http://www.usi.com>





# Remnants of T.S. Bret Satellite





Note: The cone contains the probable path of the storm center but does not show the size of the storm. Hazardous conditions can occur outside of the cone.



25N

20N

15N

Remnants Of Bret dissipated at 5 PM AST June 20, 2017

Bret no longer has a closed center of circulation. Shower and thunderstorm activity will continue to dissipate.

90W

85W

80W

75W

70W

65W

60W

### Remnants Of Bret

Tuesday June 20, 2017

5 PM AST Advisory 9

NWS National Hurricane Center

### Current information: x

Center location 12.0 N 67.3 W

Maximum sustained wind 40 mph

Movement WNW at 22 mph

### Forecast positions:

● Tropical Cyclone ○ Post/Potential TC

Sustained winds: D < 39 mph

S 39-73 mph H 74-110 mph M > 110 mph

### Potential track area:

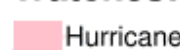


Day 1-3



Day 4-5

### Watches:



Hurricane



Trop Stm

### Warnings:

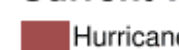


Hurricane



Trop Stm

### Current wind extent:



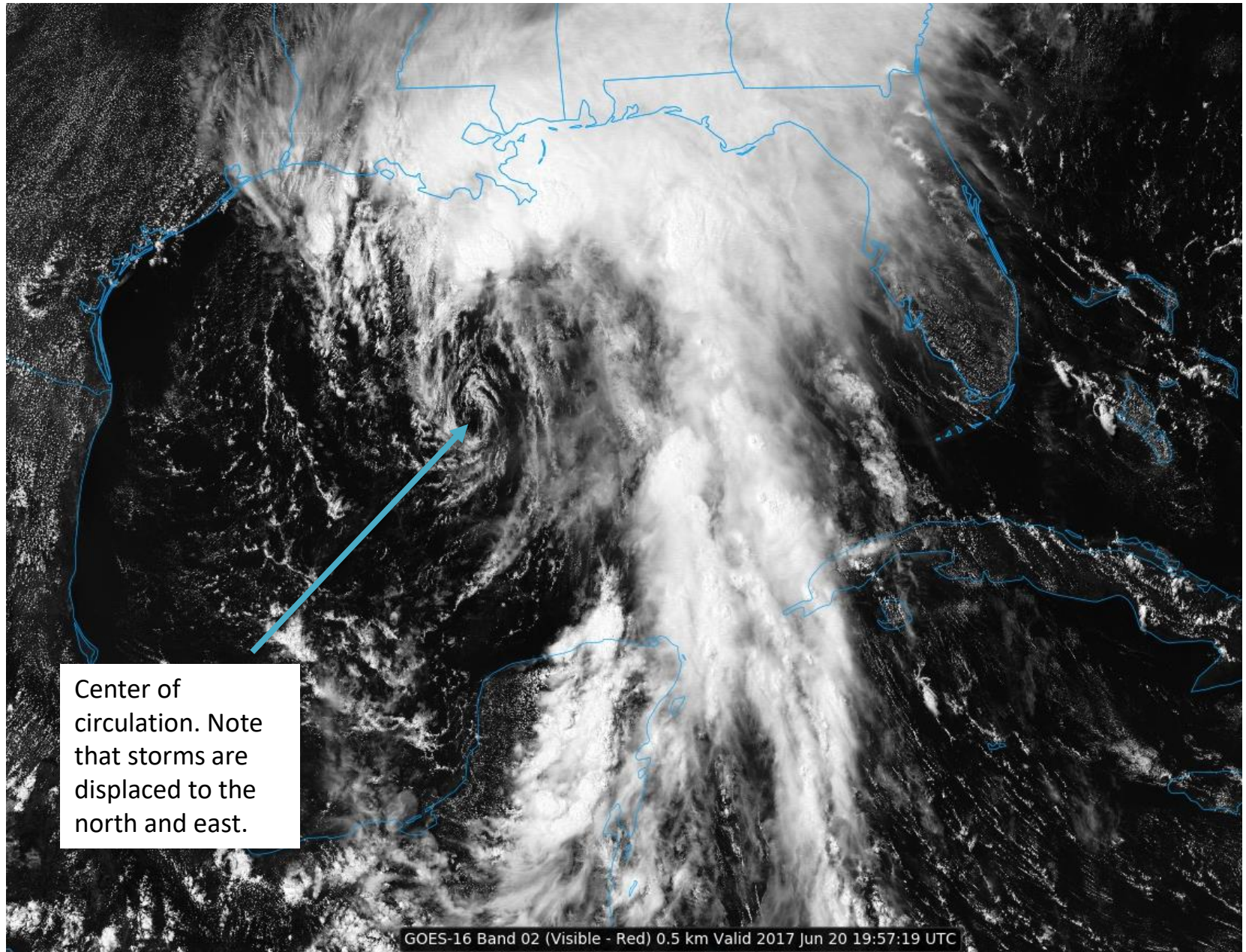
Hurricane



Trop Stm



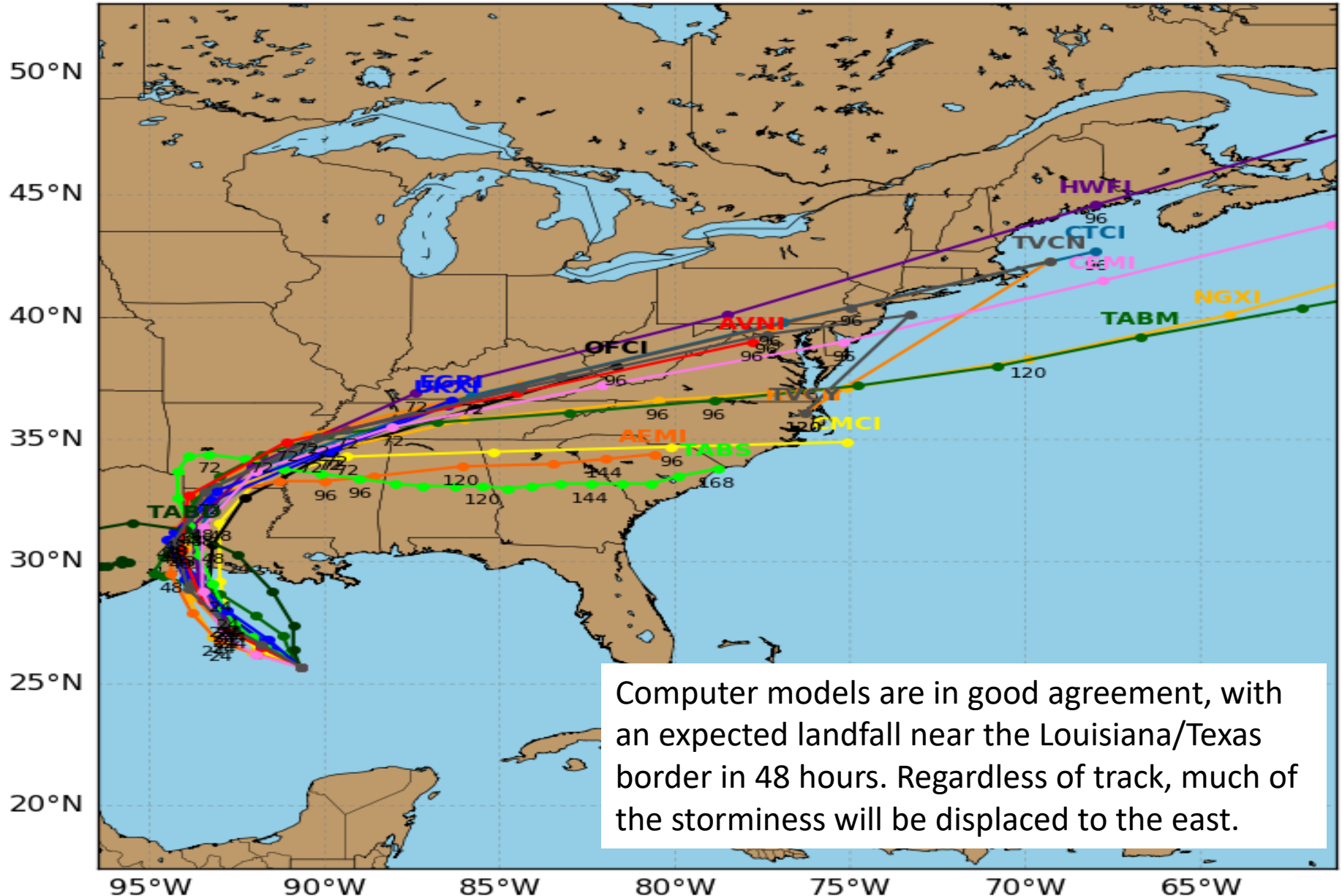
# Tropical Storm Cindy Satellite Image



# Tropical Storm CINDY Model Track Guidance

Initialized at 18z Jun 20 2017

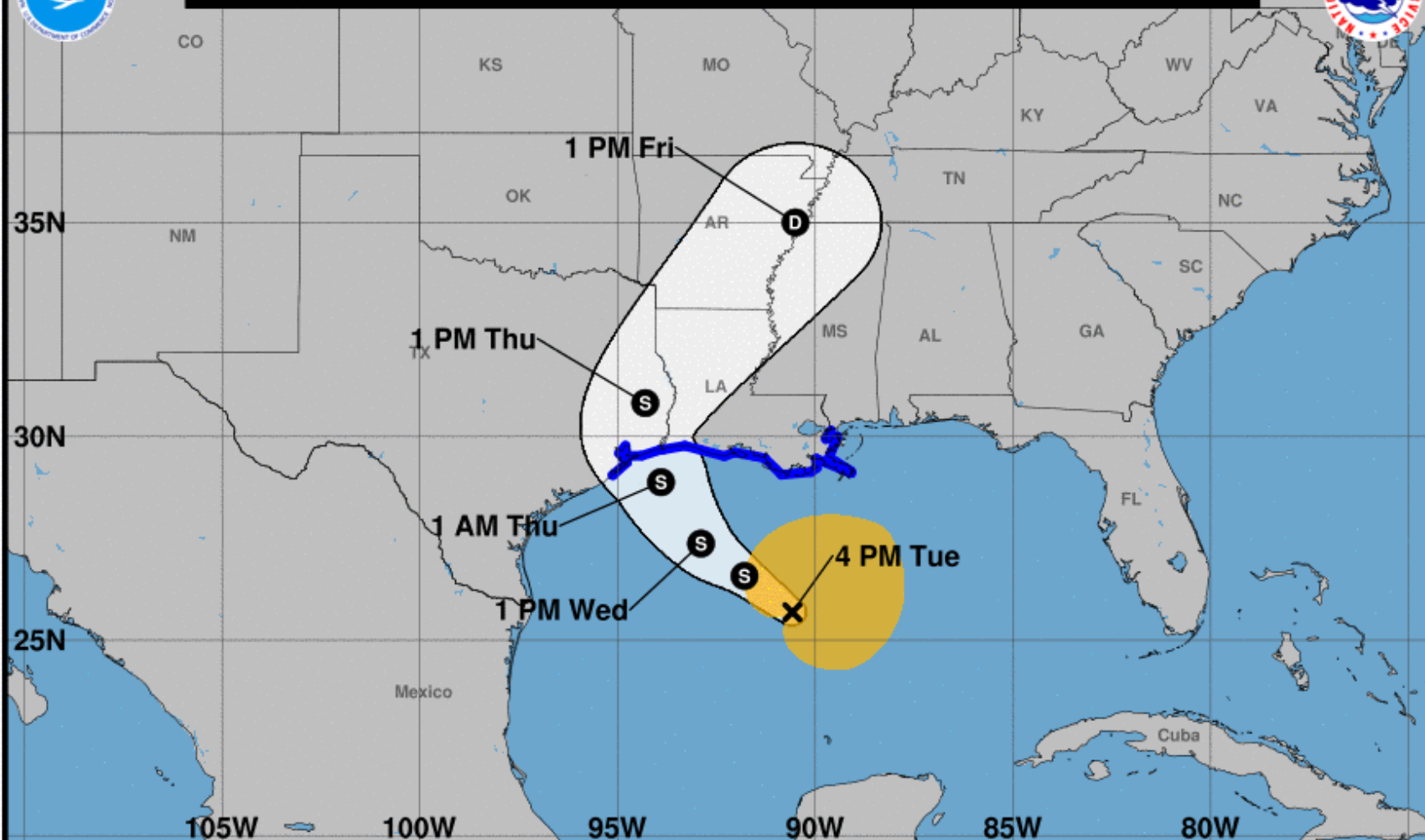
Levi Cowan - tropicaltidbits.com







Note: The cone contains the probable path of the storm center but does not show the size of the storm. Hazardous conditions can occur outside of the cone.



### Tropical Storm Cindy

Tuesday June 20, 2017

4 PM CDT Advisory 5

NWS National Hurricane Center

### Current information: x

Center location 25.7 N 90.6 W

Maximum sustained wind 45 mph

Movement: Stationary

### Forecast positions:

● Tropical Cyclone ○ Post/Potential TC

Sustained winds: D < 39 mph

S 39-73 mph H 74-110 mph M > 110 mph

### Potential track area:

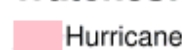


Day 1-3



Day 4-5

### Watches:



Hurricane



Trop Stm

### Warnings:

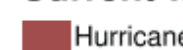


Hurricane



Trop Stm

### Current wind extent:



Hurricane



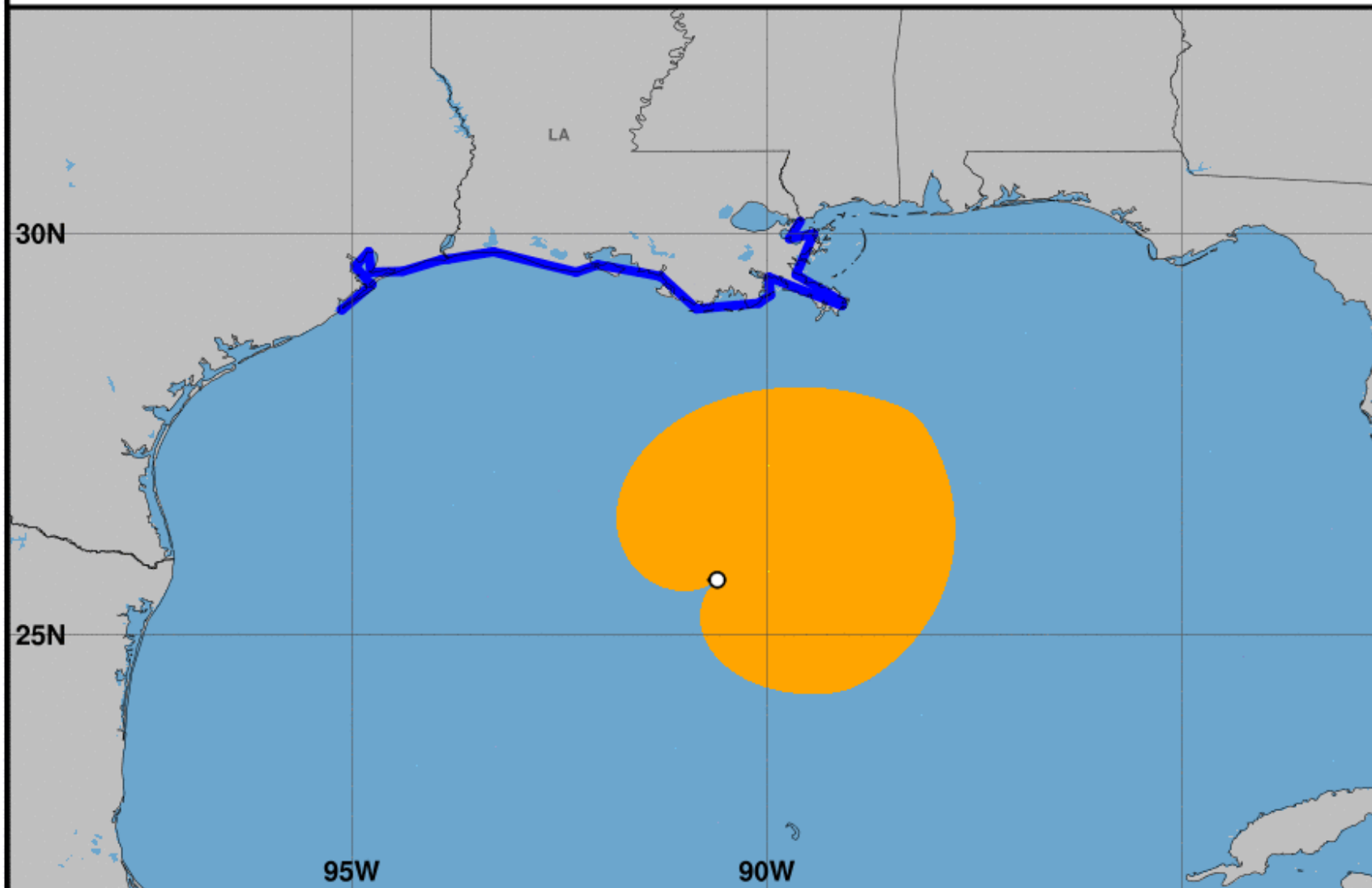
Trop Stm



# Surface Wind Field of Tropical Storm Cindy

Sustained Winds as of 400 PM CDT Tue Jun 20, 2017

Advisory Number 5



## Watches:

- Hurricane Watch
- Tropical Storm Watch

## Warnings:

- Hurricane Warning
- Tropical Storm Warning

## Sustained Winds:

- Hurricane Force
- Tropical Storm Force

## Position:

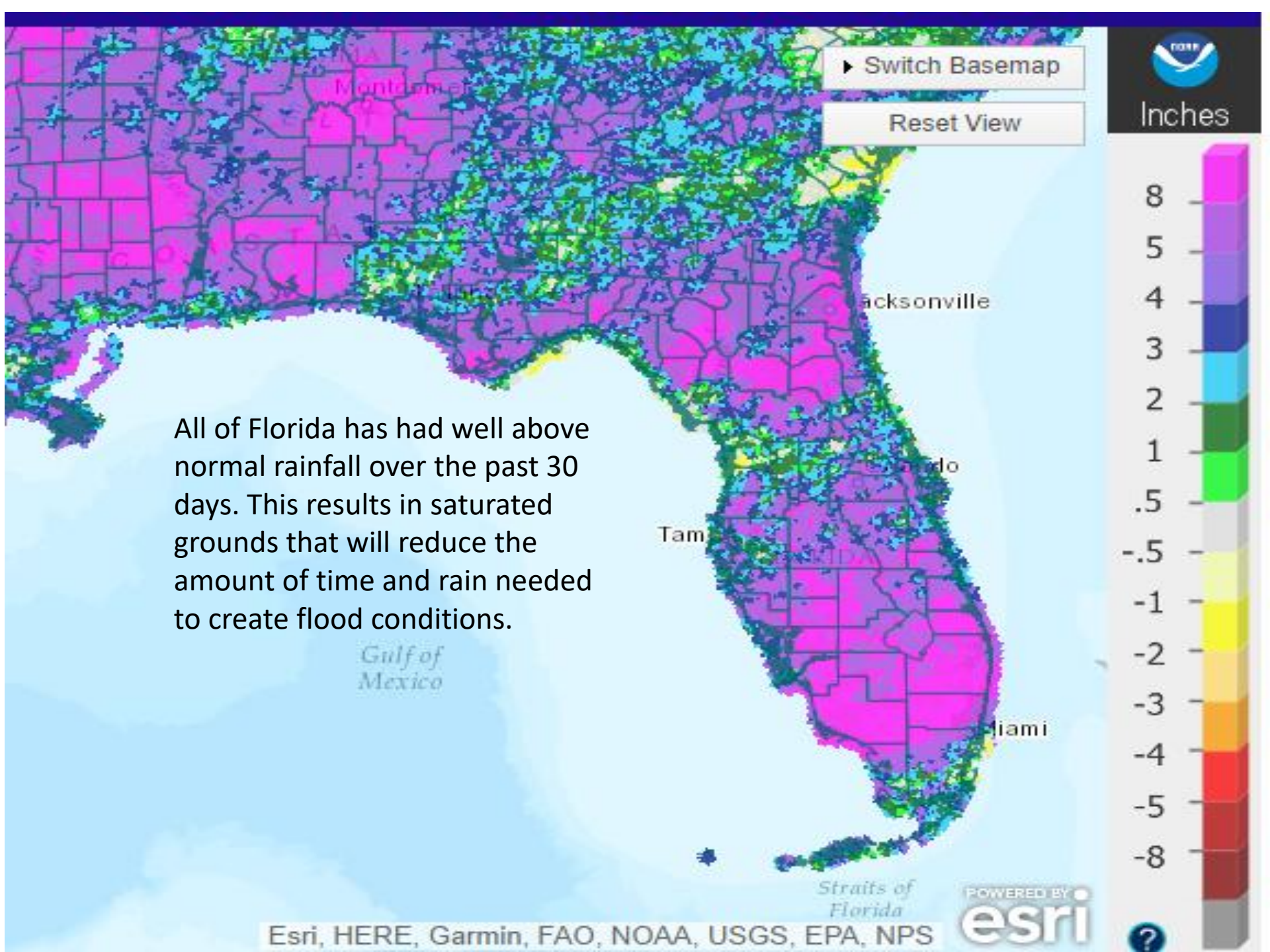
- Center as of 400 PM CDT
- Past Track



# State Radar as of 4:50pm EDT

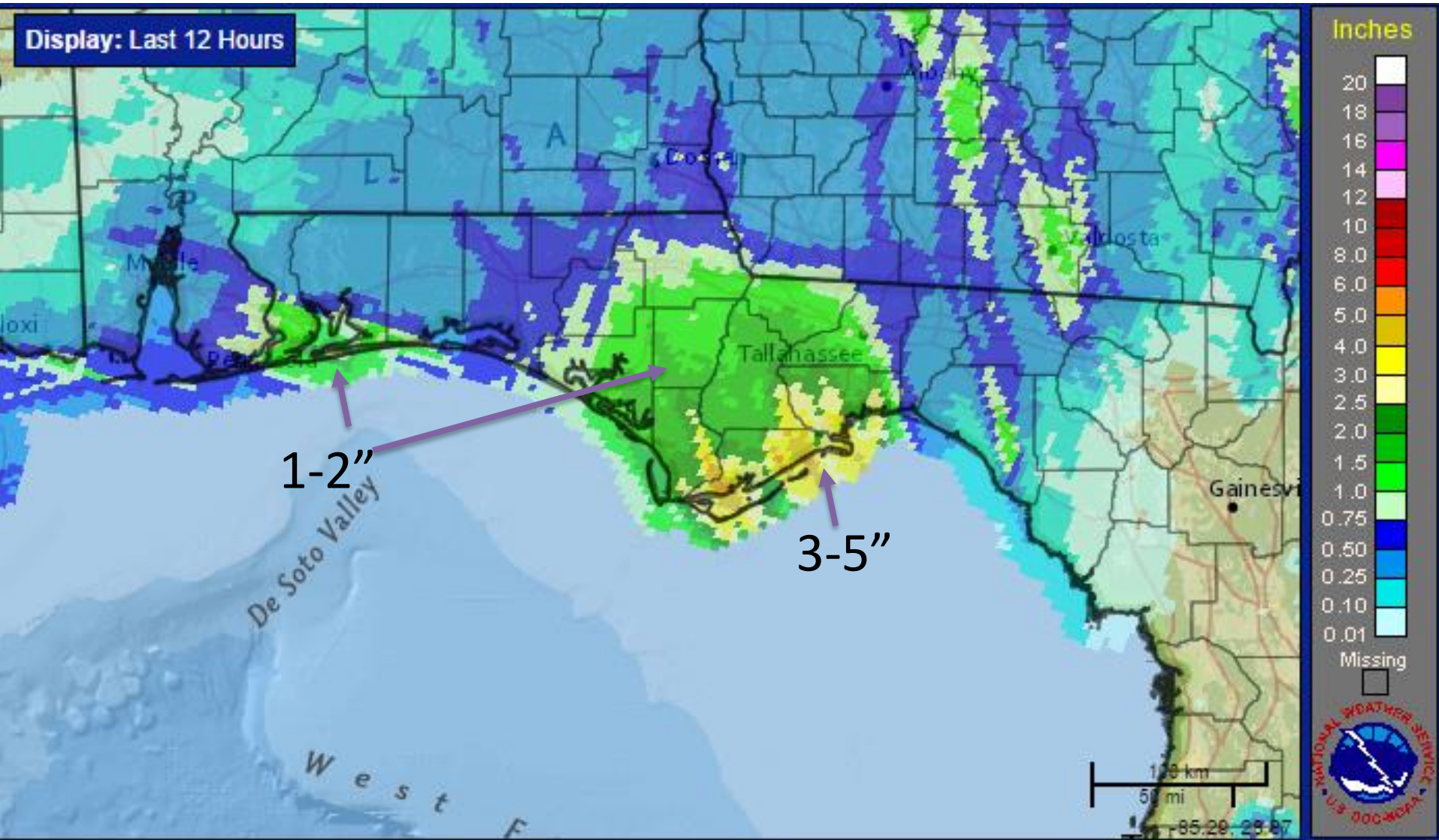






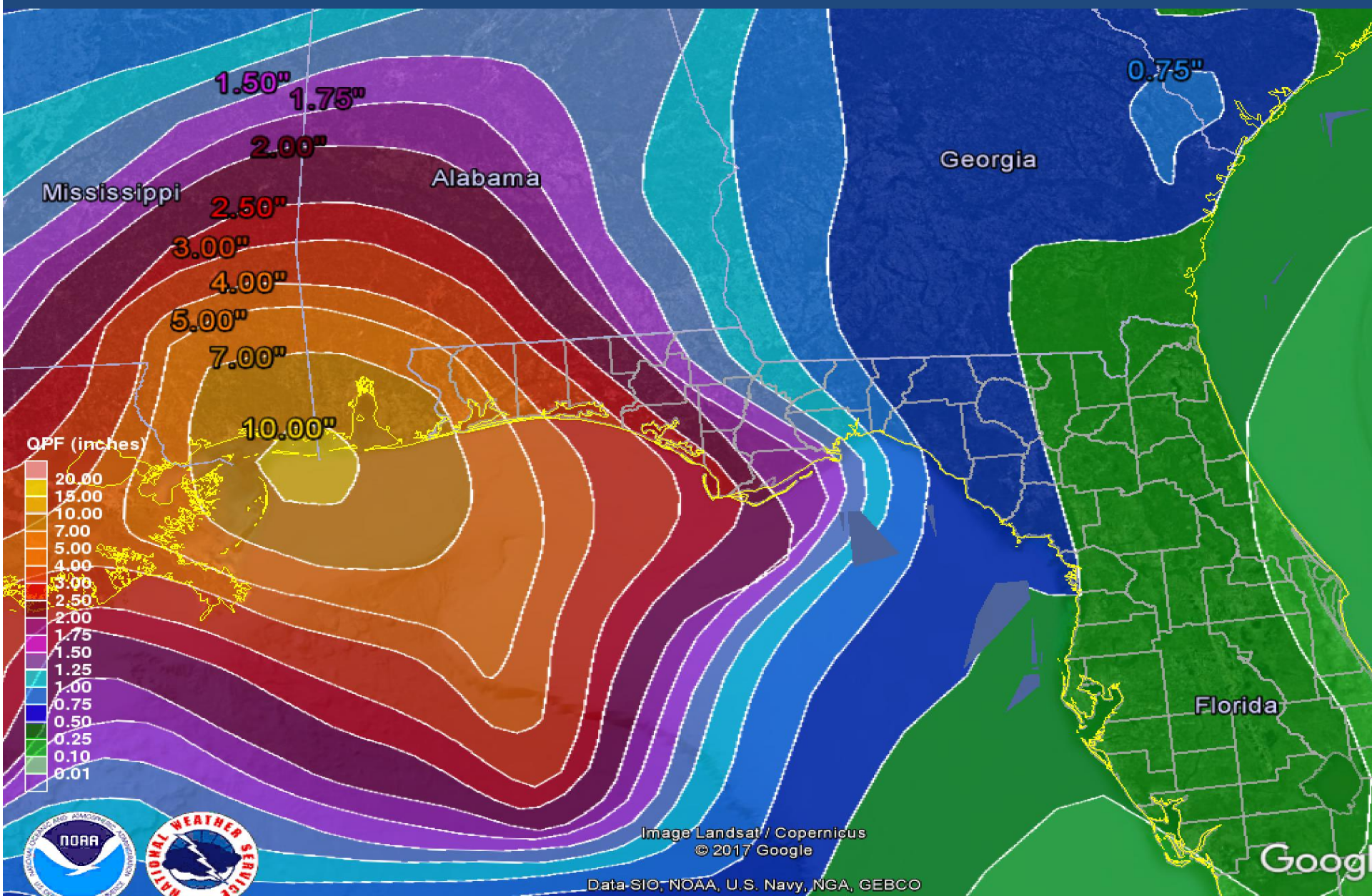


# Rainfall Estimates – Past 12 hours (as of 3pm EDT Tuesday)



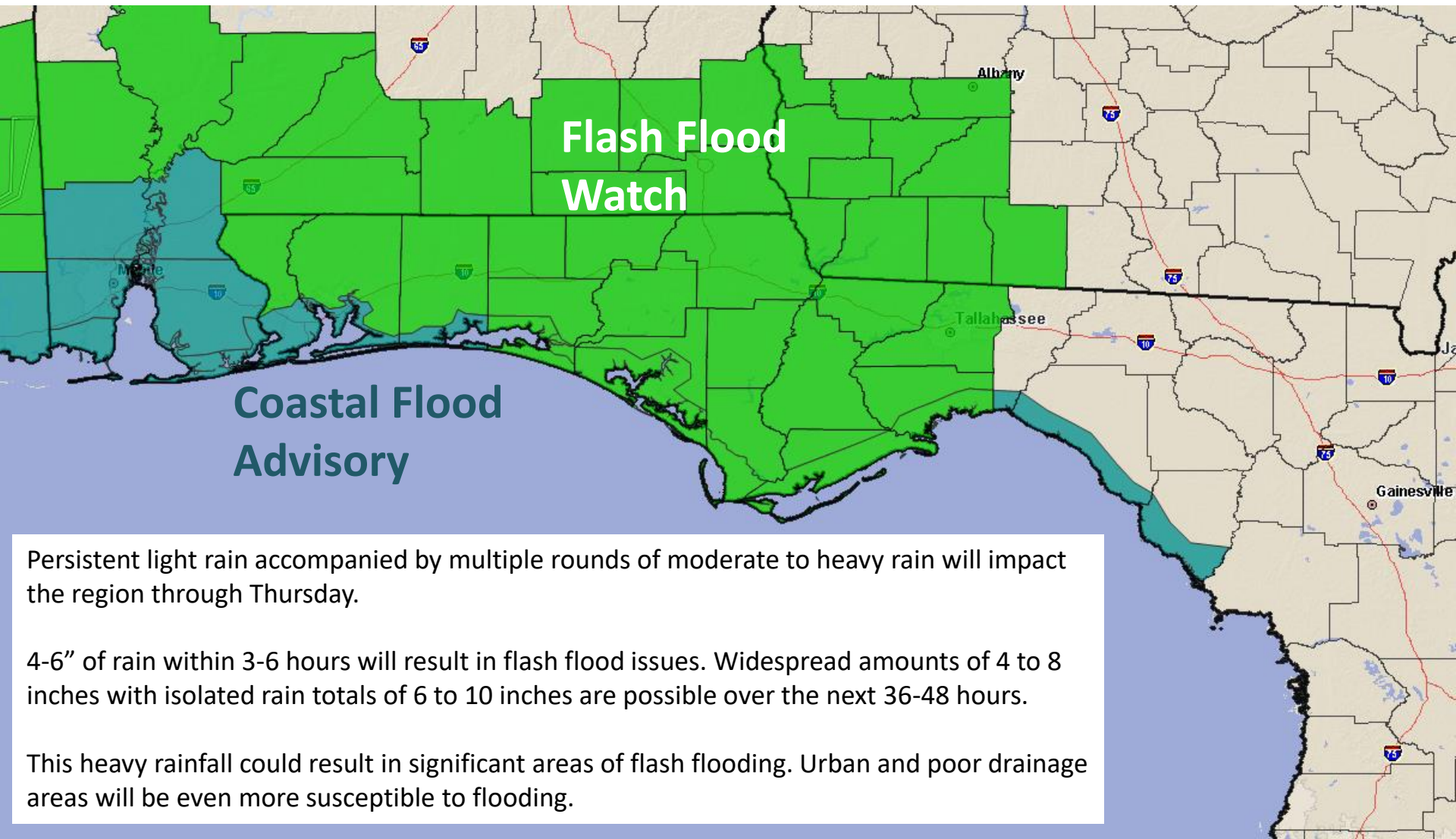


# Forecast Total Rainfall Accumulations for next 2 Days





# Flash Flood Watch In Effect through Thursday



Persistent light rain accompanied by multiple rounds of moderate to heavy rain will impact the region through Thursday.

4-6" of rain within 3-6 hours will result in flash flood issues. Widespread amounts of 4 to 8 inches with isolated rain totals of 6 to 10 inches are possible over the next 36-48 hours.

This heavy rainfall could result in significant areas of flash flooding. Urban and poor drainage areas will be even more susceptible to flooding.



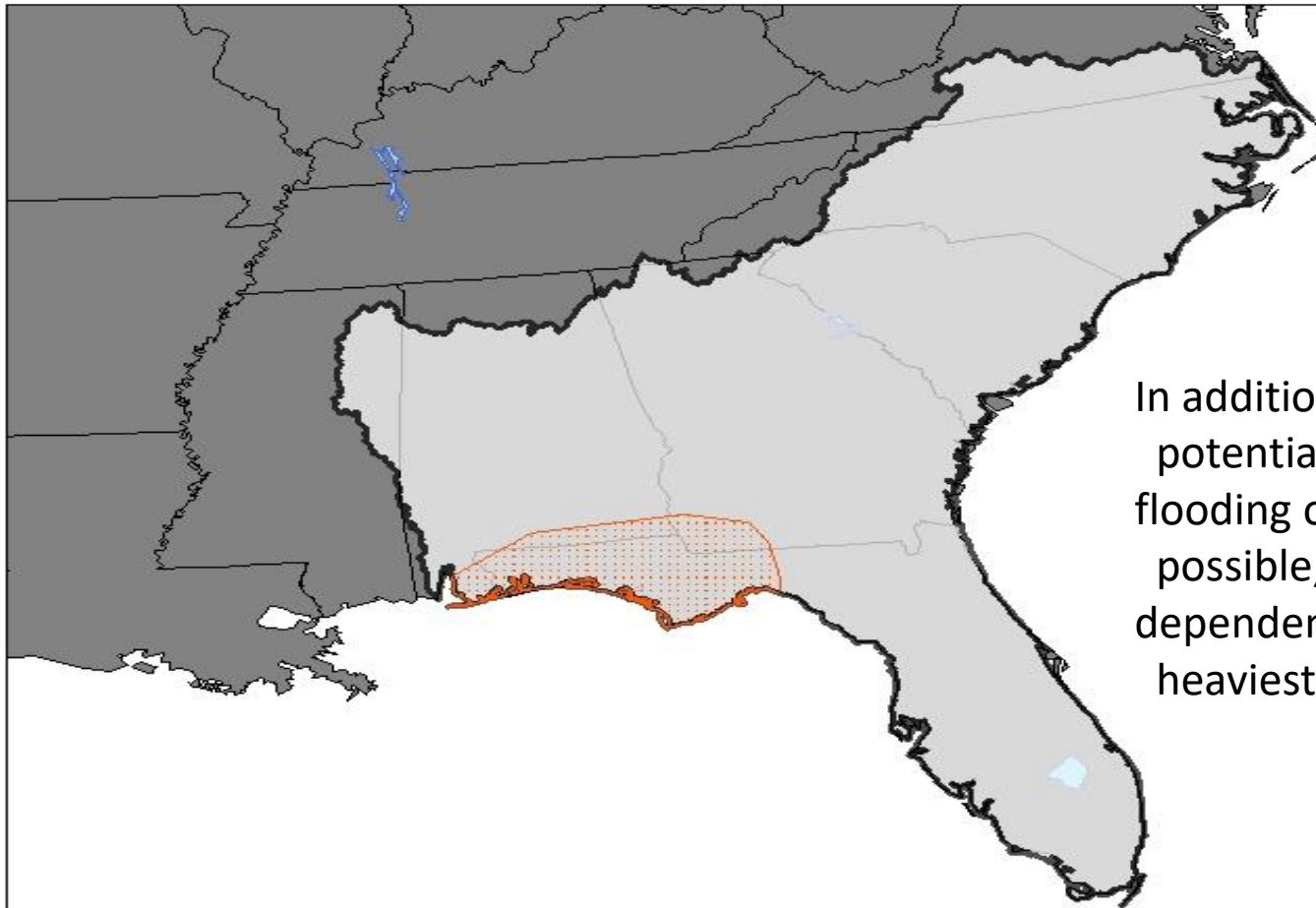
# Significant River Flood Outlook



**Valid: 6/19/2017 - 6/24/2017**

Southeast River Forecast Center

6/19/2017 10:44:44 AM



In addition to the flash flooding potential, minor to moderate flooding on area rivers will be possible, but this will ultimately be dependent on where the heaviest rain falls.



**SIGNIFICANT RIVER  
FLOODING POSSIBLE.**



**SIGNIFICANT RIVER  
FLOODING LIKELY.**



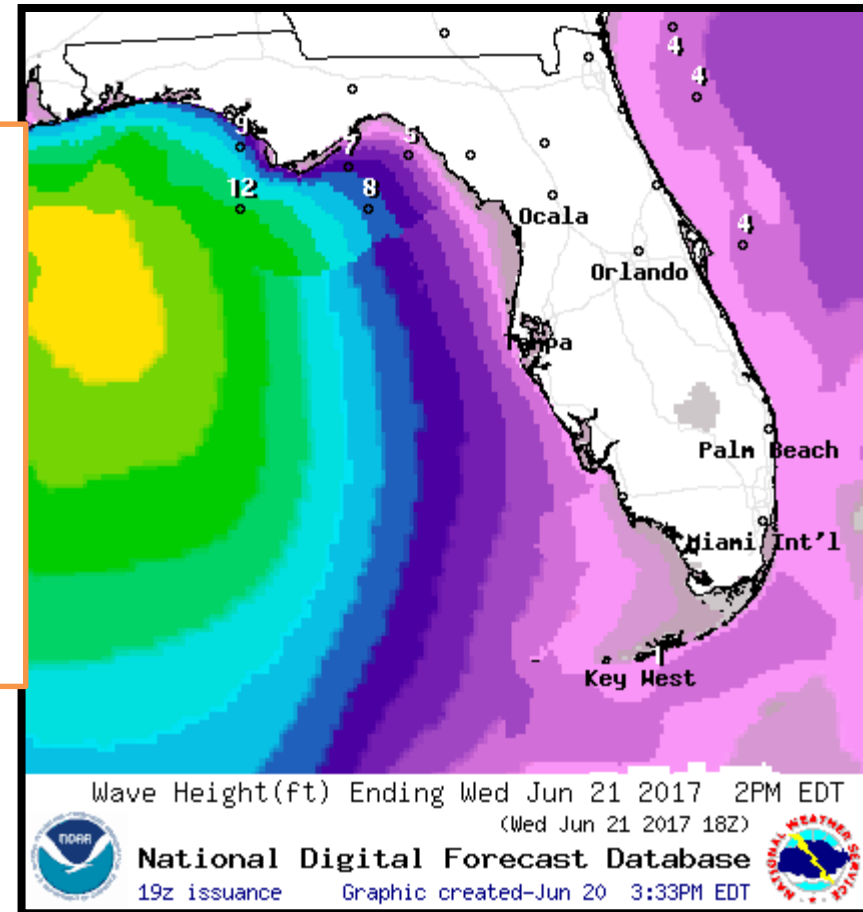
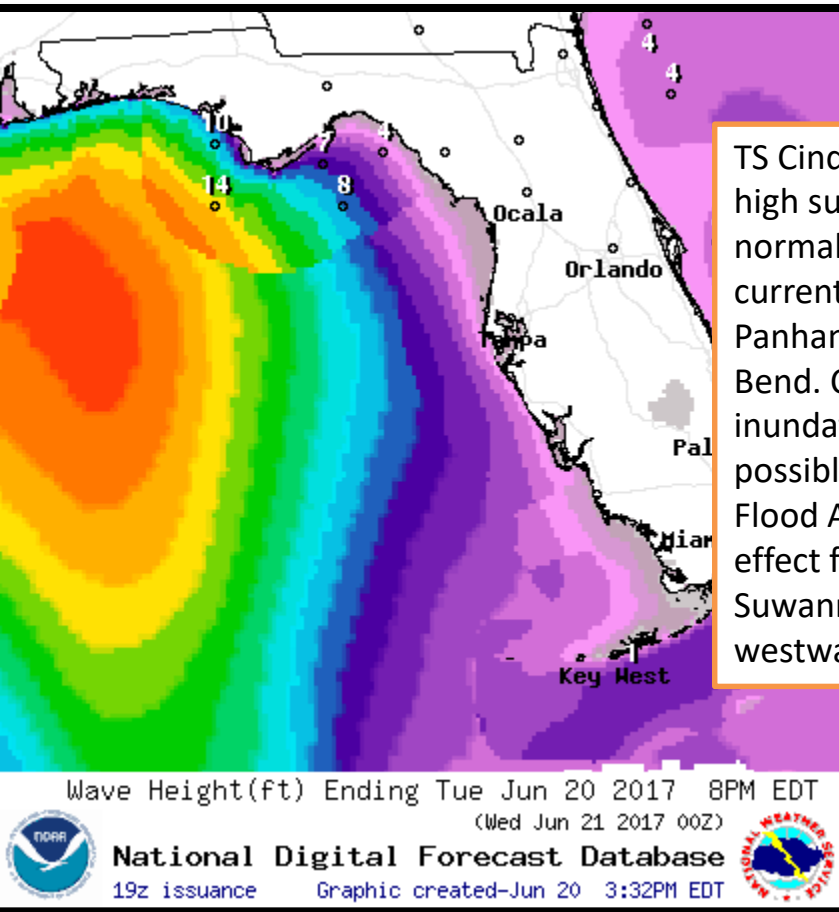
**SIGNIFICANT RIVER  
FLOODING OCCURRING  
OR IS IMMINENT.**

Significant River Flooding Impacts include:  
Roads adversely affected. Residential,  
commercial, industrial, and/or agricultural  
areas affected. May require evacuation of people.

NOTE: Flash Flooding or Minor River Flooding  
will NOT be included in this outlook.



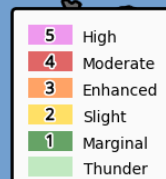
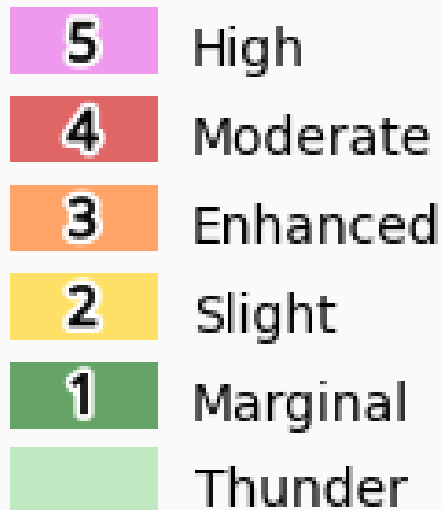
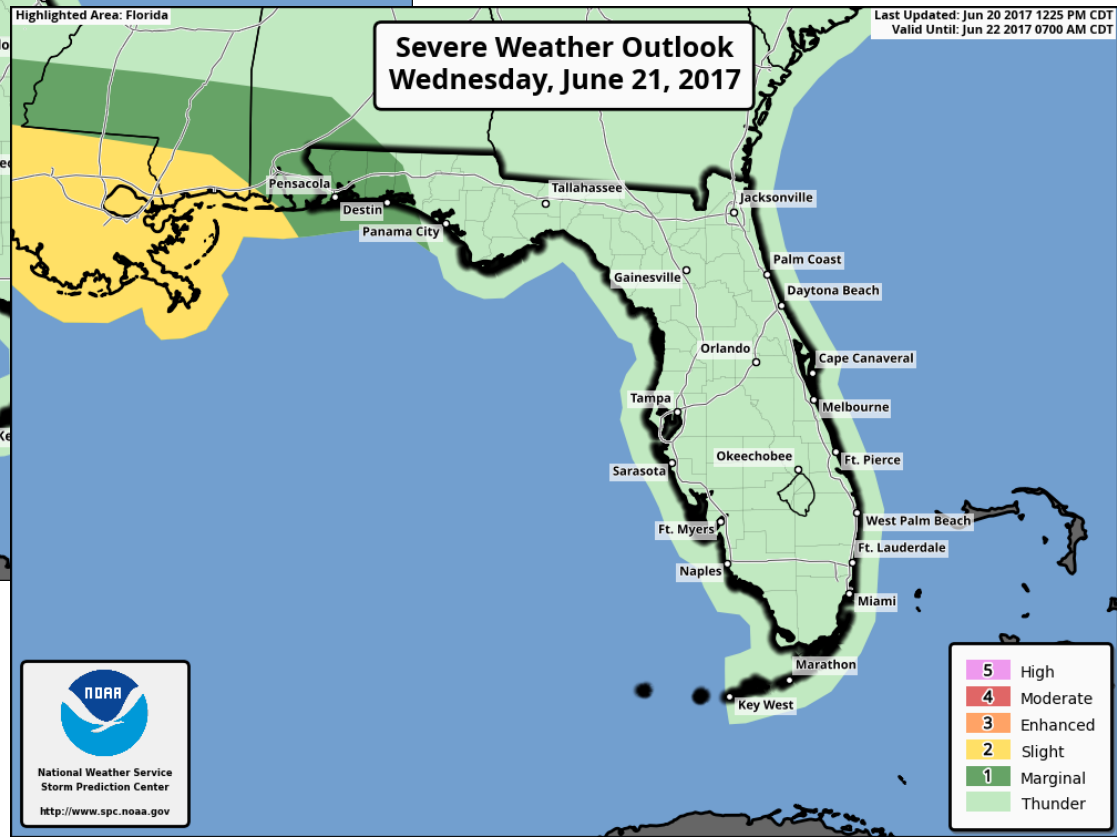
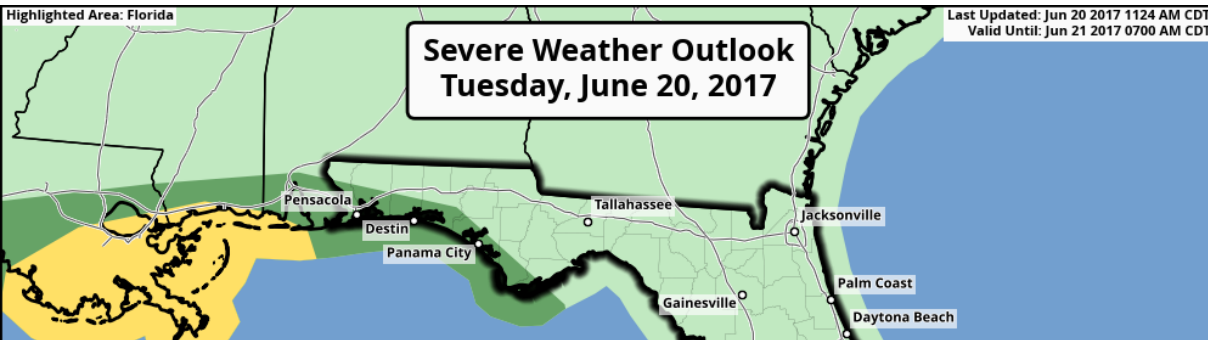
# Forecast Wave Heights (feet) –Tuesday & Wednesday



Tuesday

Wednesday

# Marginal risk for isolated tornadoes through Wednesday





# Summary

- At 5pm EDT Tuesday, Tropical Storm Bret dissipated and no longer has a closed center of circulation.
- The remnants of Bret were located in the southeastern Caribbean Sea just off the coast of Venezuela, or about 115 miles east of Curacao.
- The remnants of Bret will continue to drift to the west as shower and thunderstorm activity will continue to dissipate.
- In the Gulf of Mexico, Potential Tropical Cyclone #3 was upgraded to Tropical Storm Cindy at 2pm EDT today.
- Maximum sustained winds are near 45mph, but Cindy is nearly stationary while located about 300 miles south of New Orleans, or about 350 miles southwest of Pensacola, Florida.
- Cindy is expected to make landfall near the Texas/Louisiana border as a weak tropical storm early on Thursday.
- However, upper level winds will continue to push a majority of the associated storminess well to the east of the center of the system.
- No additional tropical development is expected within the next 5 days.

## Florida Outlook:

- The remnants of T.S. Bret are not expected to be a threat to Florida.
- Regardless of track and intensity, the main threat to Florida from Tropical Storm Cindy will be the potential for heavy rainfall, especially on tonight and tomorrow.
- Widespread rainfall amounts of 4-8" are expected along the Florida Panhandle, with locally higher amounts of 10+" possible. Flash Flood Watches are in effect from Leon County westward.
- Increased wave heights of 6-10' are also expected along the Panhandle coast and may lead to minor coastal flooding at times of high tide along with a high risk of rip currents. A Coastal Flood Advisory is in effect for the Panhandle and Big Bend coast west of the Suwannee River as tides may run 1-2' above normal.
- A marginal risk for isolated tornadoes/waterspouts exists for coastal portions of the Florida Panhandle through 8am Wednesday, with this risk continuing on Wednesday for the western Panhandle.
- River flooding will be a concern later this week into the weekend.

Another briefing packet will be issued Wednesday morning. For more information on this system visit the NHC website at [www.nhc.noaa.gov](http://www.nhc.noaa.gov)





# TROPICAL UPDATE

Created by:

Amy Godsey, Chief State Meteorologist  
[amy.godsey@em.myflorida.com](mailto:amy.godsey@em.myflorida.com)

State Meteorological Support Unit  
Florida Division of Emergency  
Management

Users wishing to subscribe (approval pending) to this distribution list, register at [https://public.govdelivery.com/accounts/FLDEM/subscriber/new?topic\\_id=SERT\\_Met\\_Tropics](https://public.govdelivery.com/accounts/FLDEM/subscriber/new?topic_id=SERT_Met_Tropics).

Other reports available for subscription are available at <https://public.govdelivery.com/accounts/FLDEM/subscriber/new?preferences=true>