



TROPICAL UPDATE

9 AM EDT

Tuesday, June 20, 2017

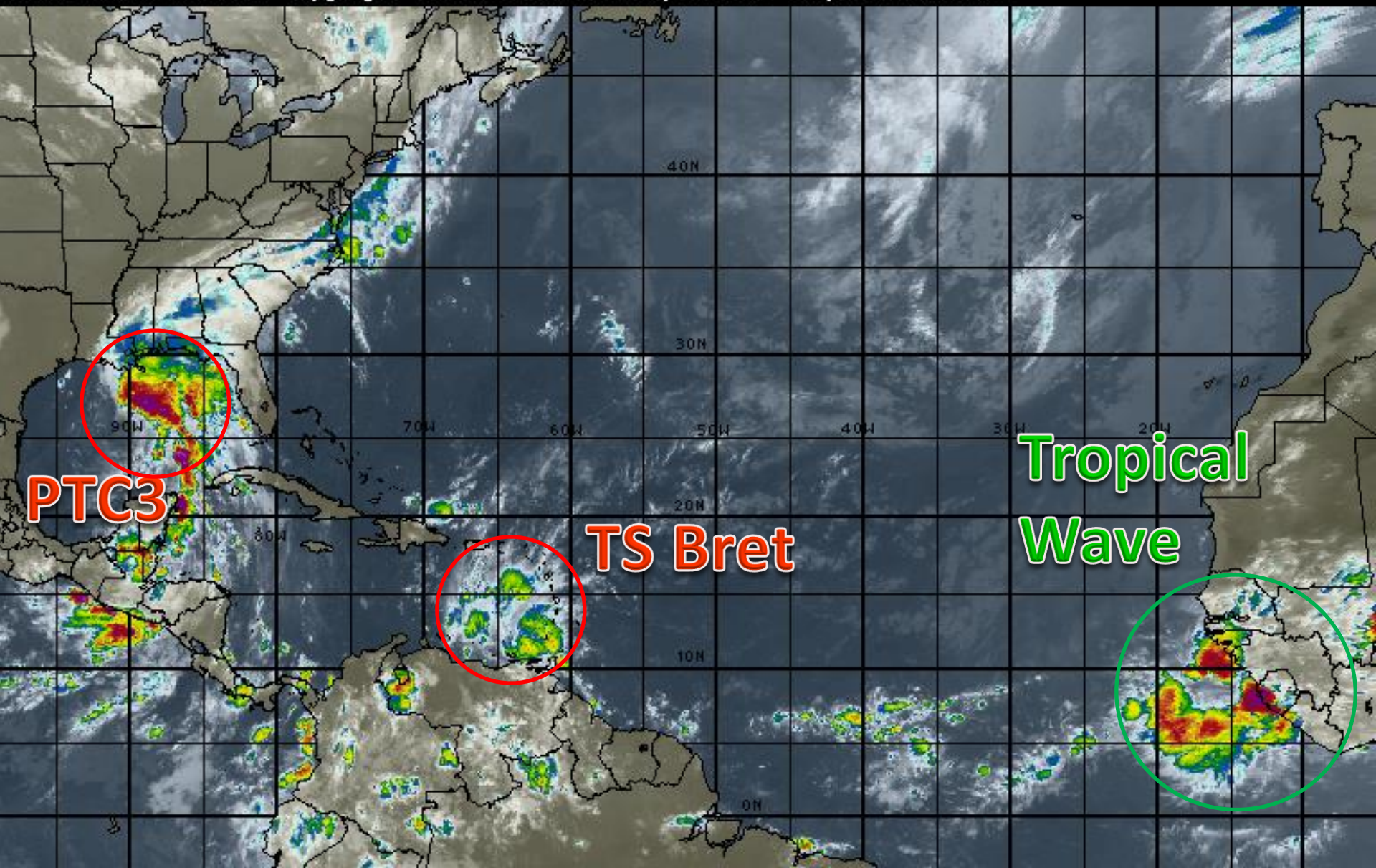
Tropical Storm Bret

**Potential Tropical Cyclone #3
(formerly Gulf Invest Area 93L)**

This update is intended for government and emergency response officials, and is provided for informational and situational awareness purposes only. Forecast conditions are subject to change based on a variety of environmental factors. For additional information, or for any life safety concerns with an active weather event please contact your County Emergency Management or Public Safety Office, local National Weather Service forecast office or visit the National Hurricane Center website at www.nhc.noaa.gov.

Atlantic Basin Satellite Image

12:00 20-JUN-2017 GMT Copyright © 1998-2016 WSI Corporation <http://www.wsi.com>

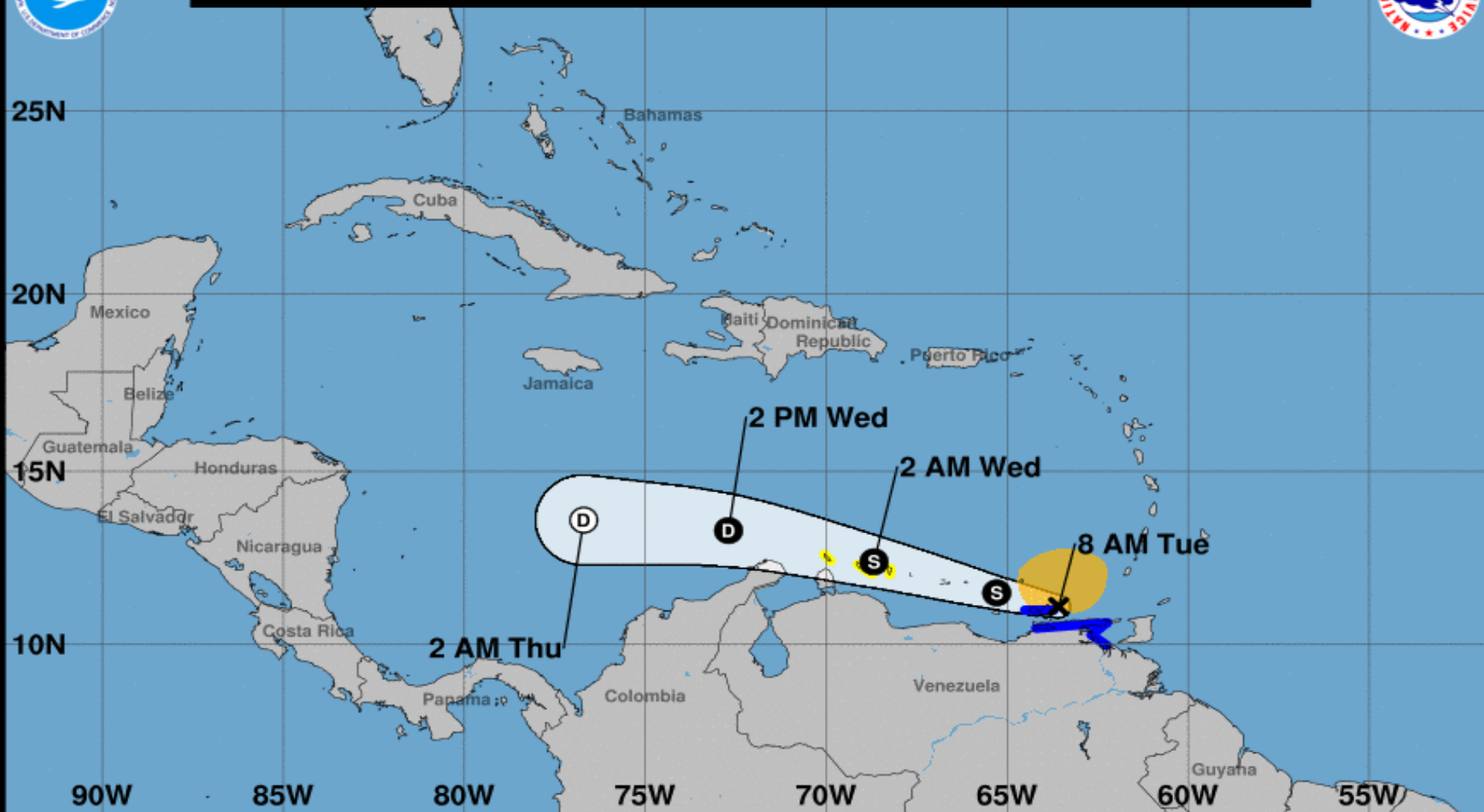


Tropical Storm Bret Satellite





Note: The cone contains the probable path of the storm center but does not show the size of the storm. Hazardous conditions can occur outside of the cone.



Tropical Storm Bret

Tuesday June 20, 2017

8 AM AST Intermediate Advisory 7A

NWS National Hurricane Center

Current information: x

Center location 11.1 N 63.6 W

Maximum sustained wind 45 mph

Movement WNW at 21 mph

Forecast positions:

● Tropical Cyclone ○ Post/Potential TC

Sustained winds: D < 39 mph

S 39-73 mph H 74-110 mph M > 110 mph

Potential track area:

Day 1-3 Day 4-5

Watches:

Hurricane Trop Stm

Warnings:

Hurricane Trop Stm

Current wind extent:

Hurricane Trop Stm

Potential Tropical Cyclone Three

7 AM CDT Tue Jun 20 2017

Position 25.4 N 90.3 W

Maximum Winds 40 mph

Gusts 50 mph

Movement NW at 9 mph

Minimum Pressure 999 mb (29.50 inches)

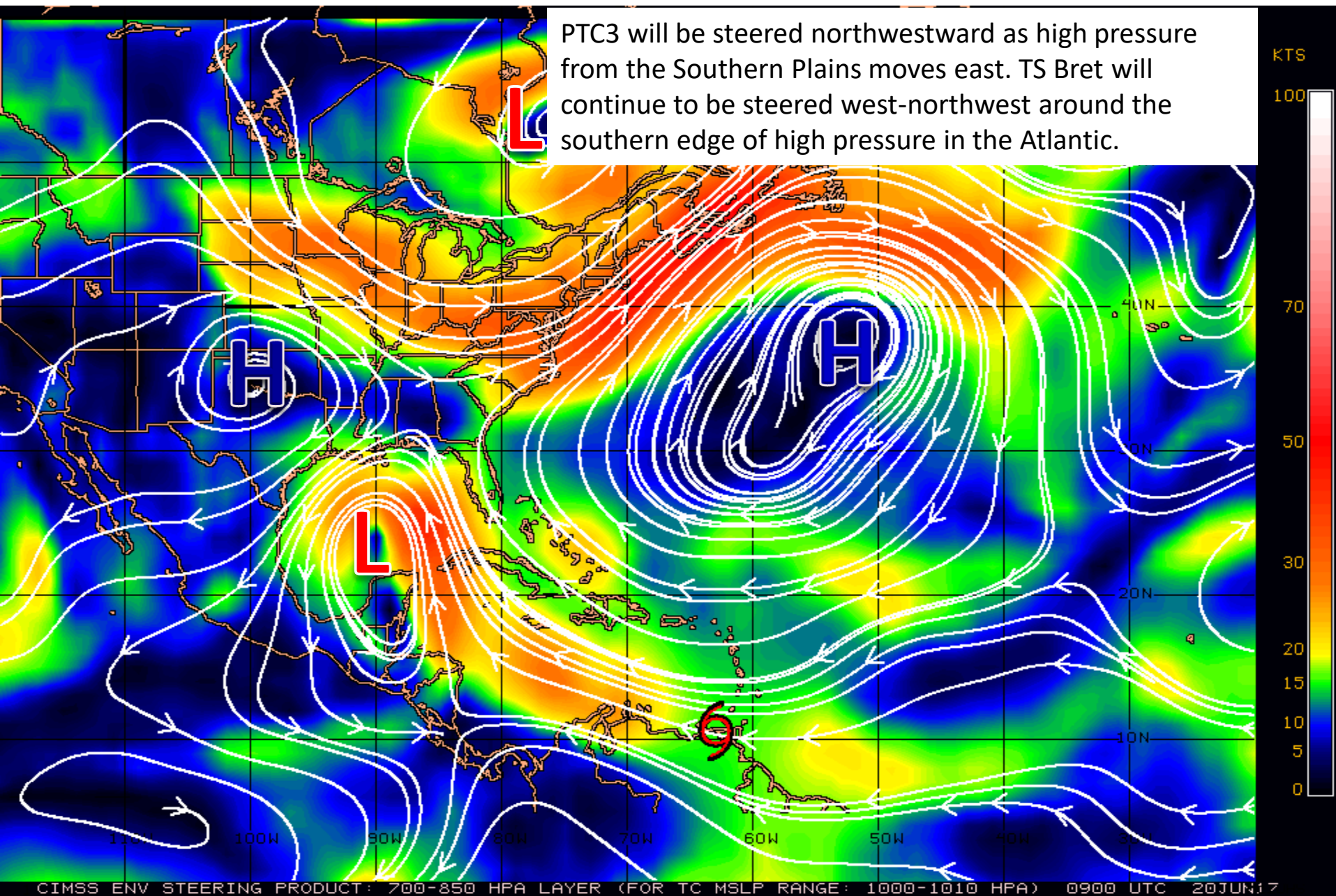
Blue Marble basemap imagery courtesy NASA

Satellite 12:18 PM UTC

7:18 AM CDT



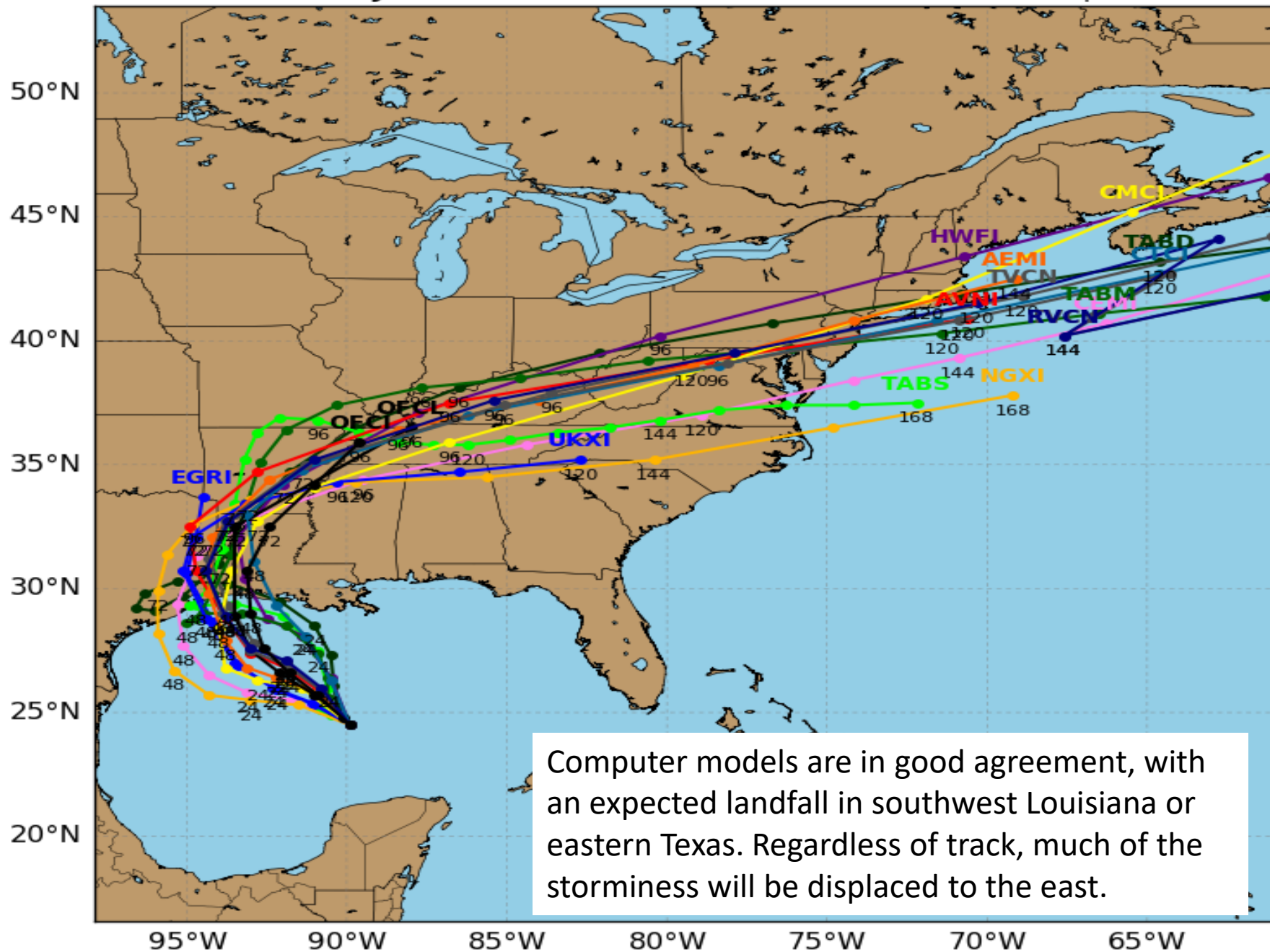
Steering Currents



Tropical Depression 03L Model Track Guidance

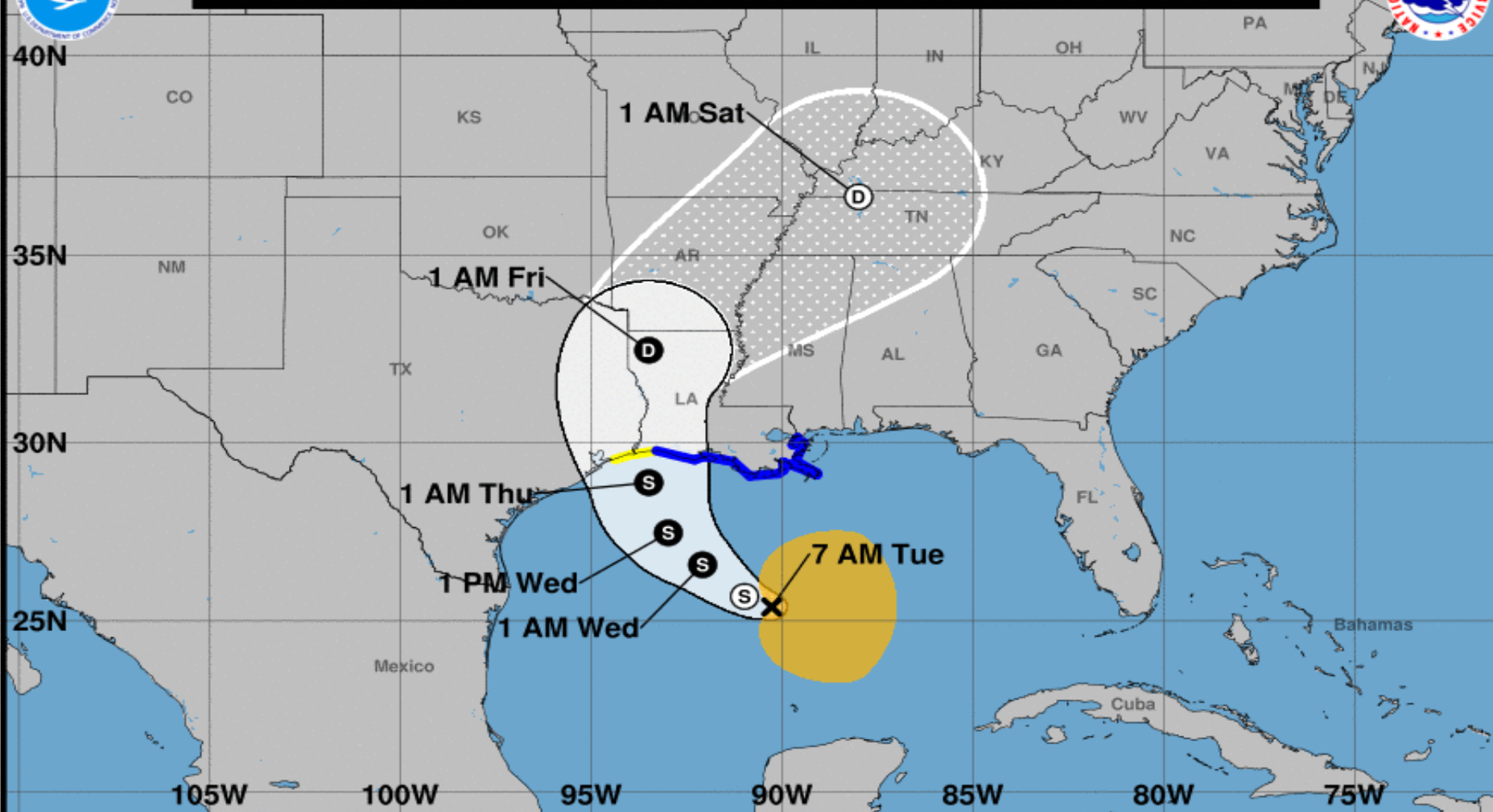
Initialized at 06z Jun 20 2017

Levi Cowan - tropicaltidbits.com





Note: The cone contains the probable path of the storm center but does not show the size of the storm. Hazardous conditions can occur outside of the cone.



Potential Tropical Cyclone Three
Tuesday June 20, 2017
7 AM CDT Intermediate Advisory 3A
NWS National Hurricane Center

Current information: X
Center location 25.4 N 90.3 W
Maximum sustained wind 40 mph
Movement NW at 9 mph

Forecast positions:
● Tropical Cyclone ○ Post/Potential TC
Sustained winds: D < 39 mph
S 39-73 mph H 74-110 mph M > 110 mph

Potential track area:

Day 1-3 Day 4-5

Watches:

Hurricane Trop Stm

Warnings:

Hurricane Trop Stm

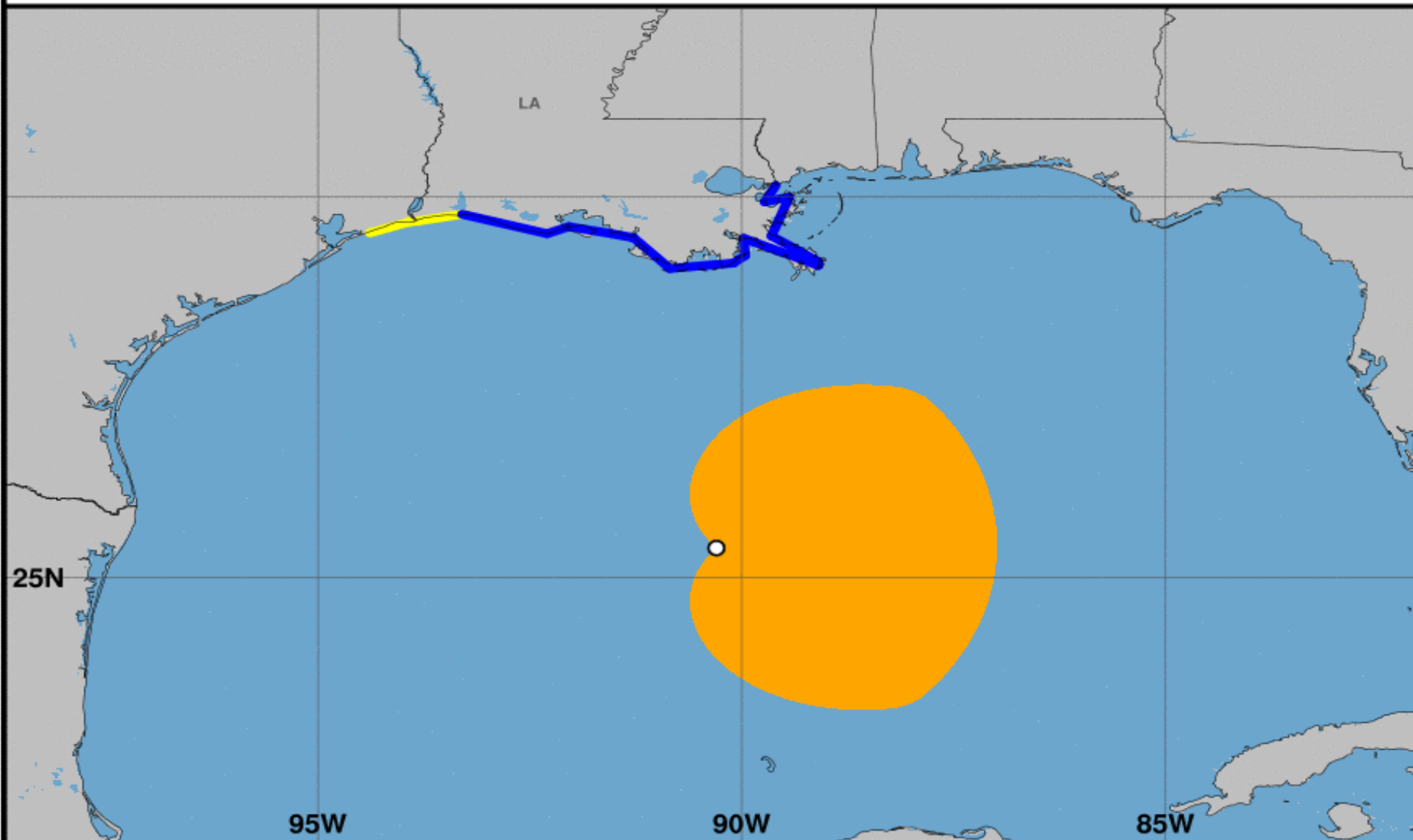
Current wind extent:

Hurricane Trop Stm



Surface Wind Field of Potential Tropical Cyclone Three

Sustained Winds as of 700 AM CDT Tue Jun 20, 2017 Advisory Number 3A



Watches:

- Hurricane Watch
- Tropical Storm Watch

Warnings:

- Hurricane Warning
- Tropical Storm Warning

Sustained Winds:

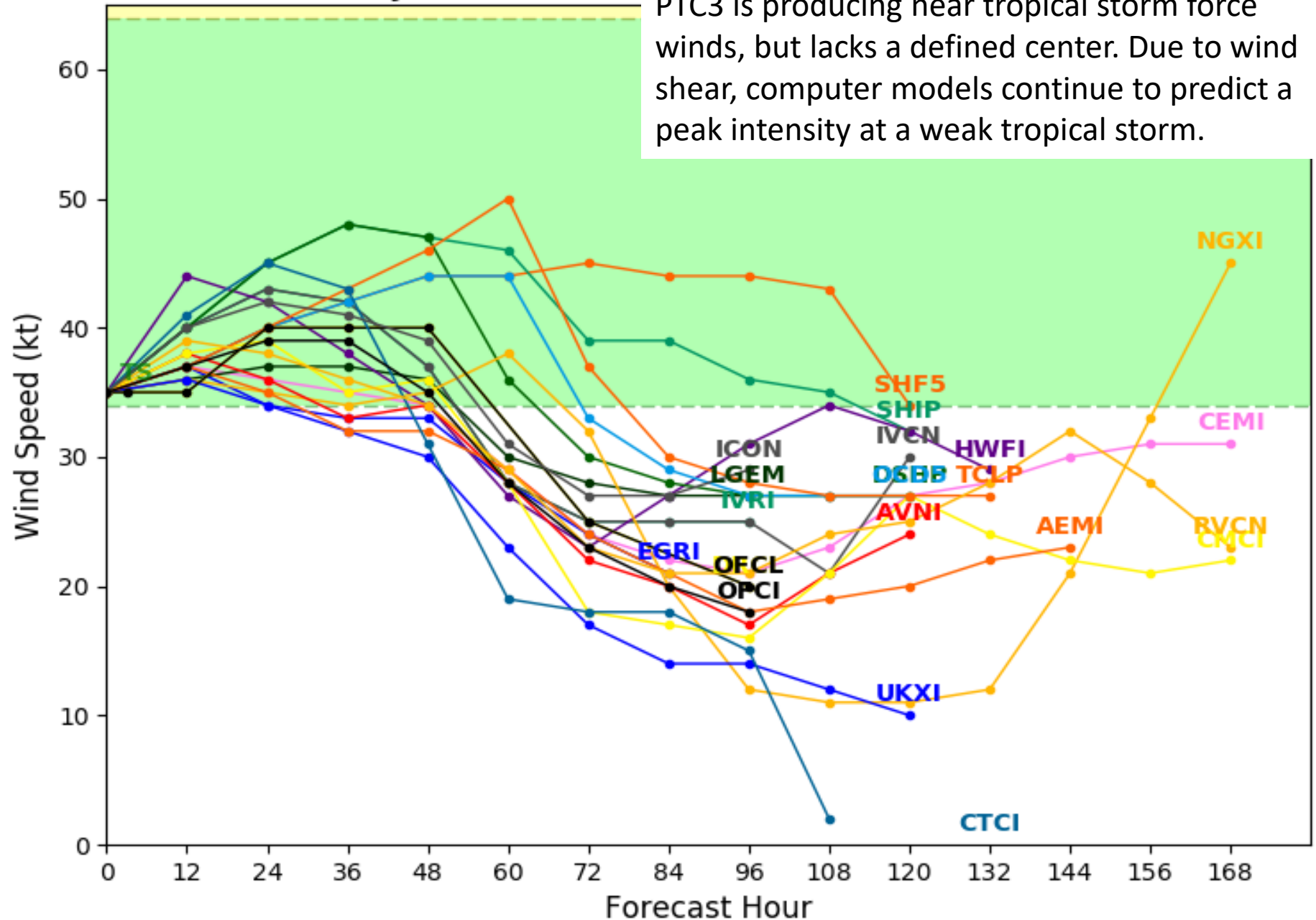
- Hurricane Force
- Tropical Storm Force

Position:

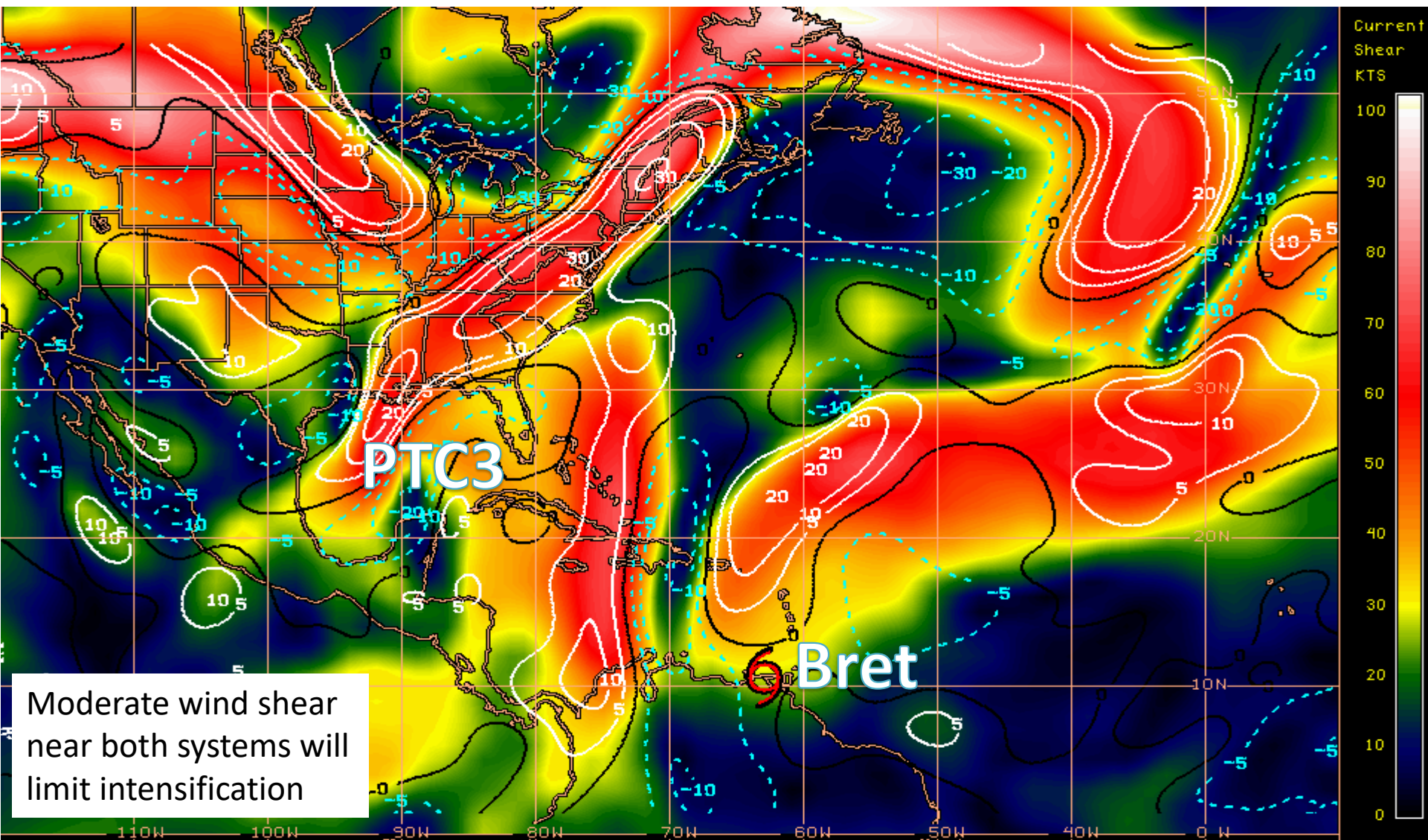
- Center as of 700 AM CDT
- Past Track

Initialized at 06z Jun 20 2017

PTC3 is producing near tropical storm force winds, but lacks a defined center. Due to wind shear, computer models continue to predict a peak intensity at a weak tropical storm.

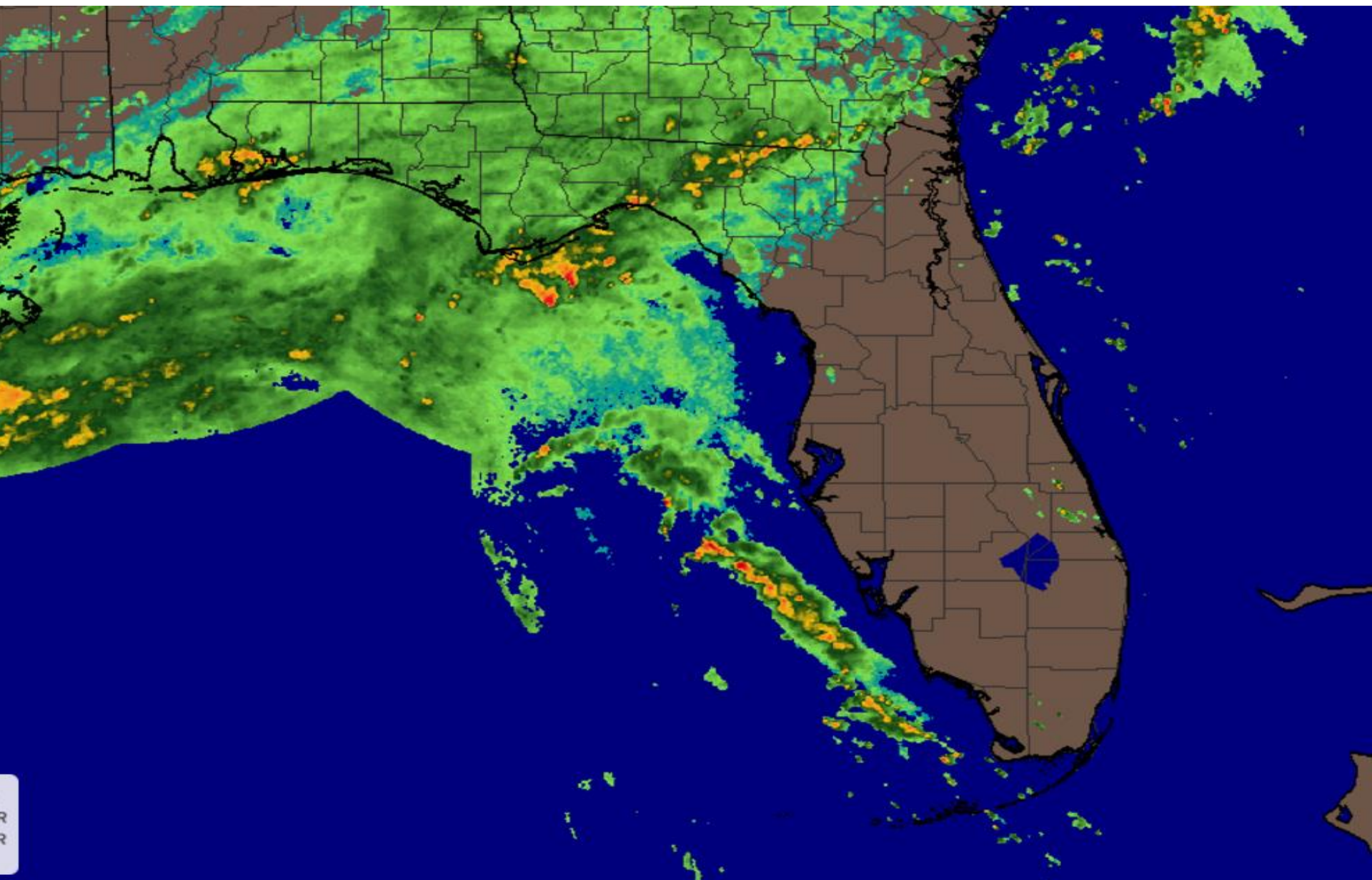


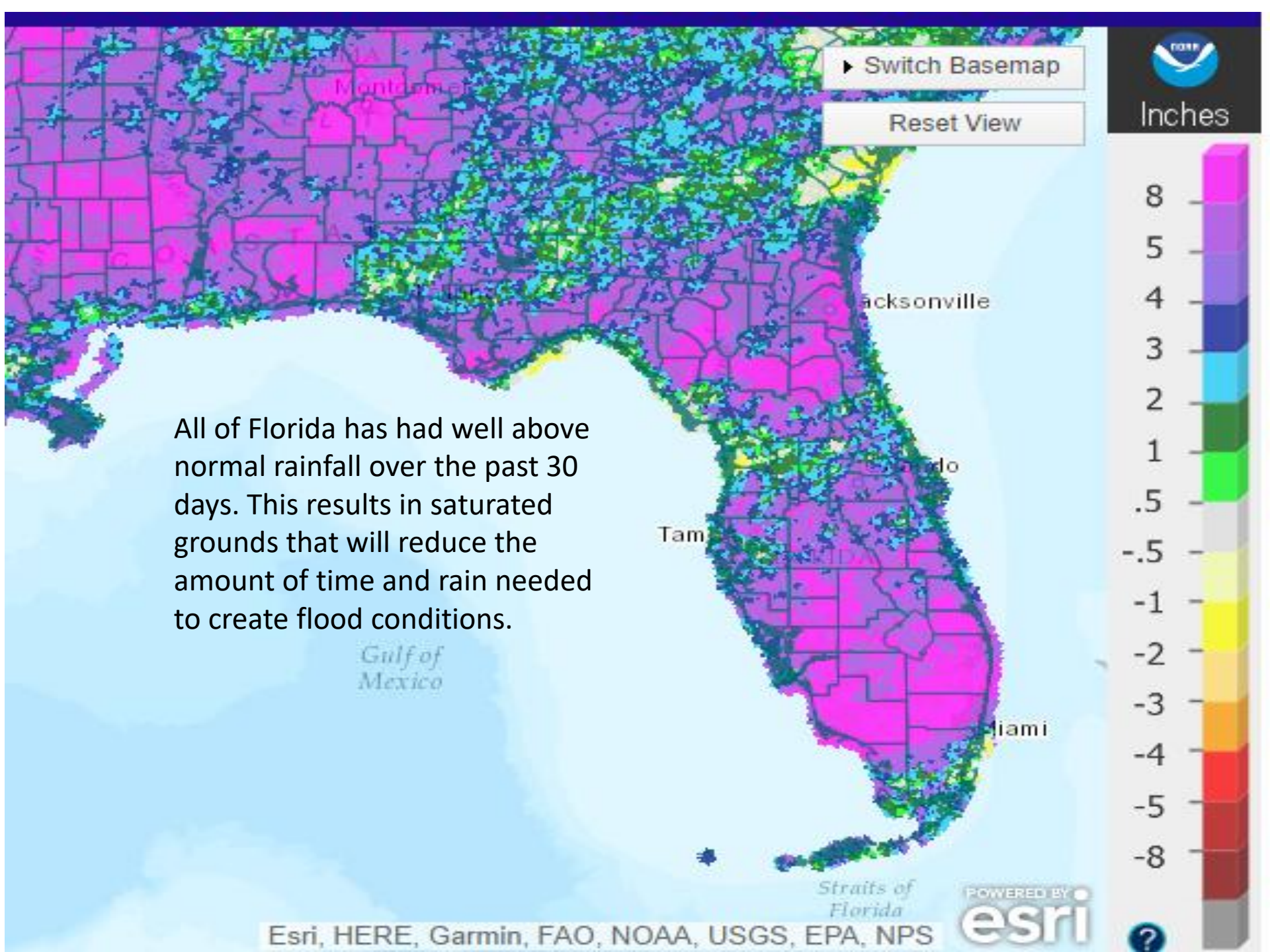
Current Wind Shear (shaded) and Shear Tendency (lines)



Shear Tendency (KTS) Over Past 24 Hours: Increasing ——— Decreasing - - - -

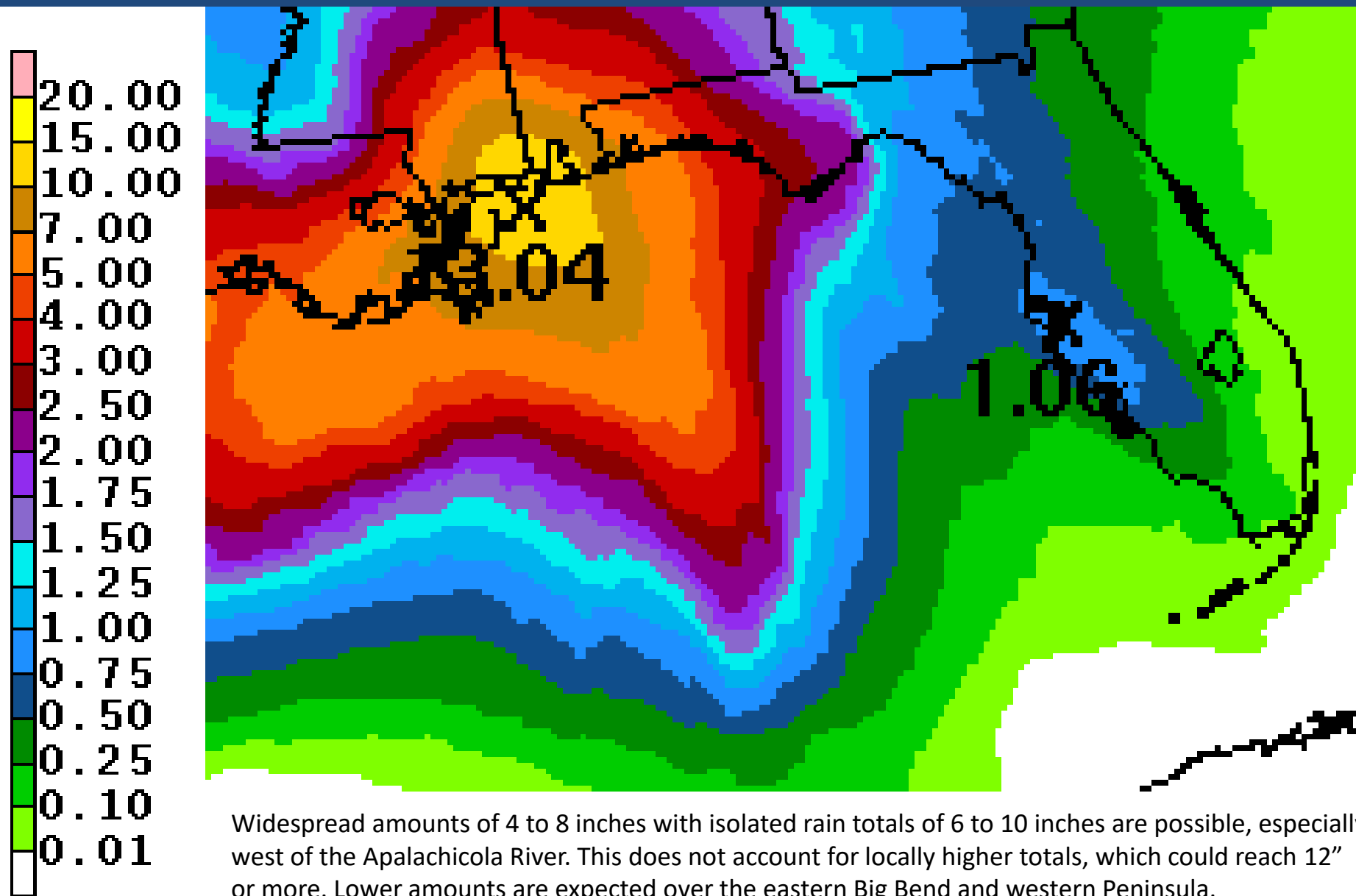
State Radar as of 8:50am EDT



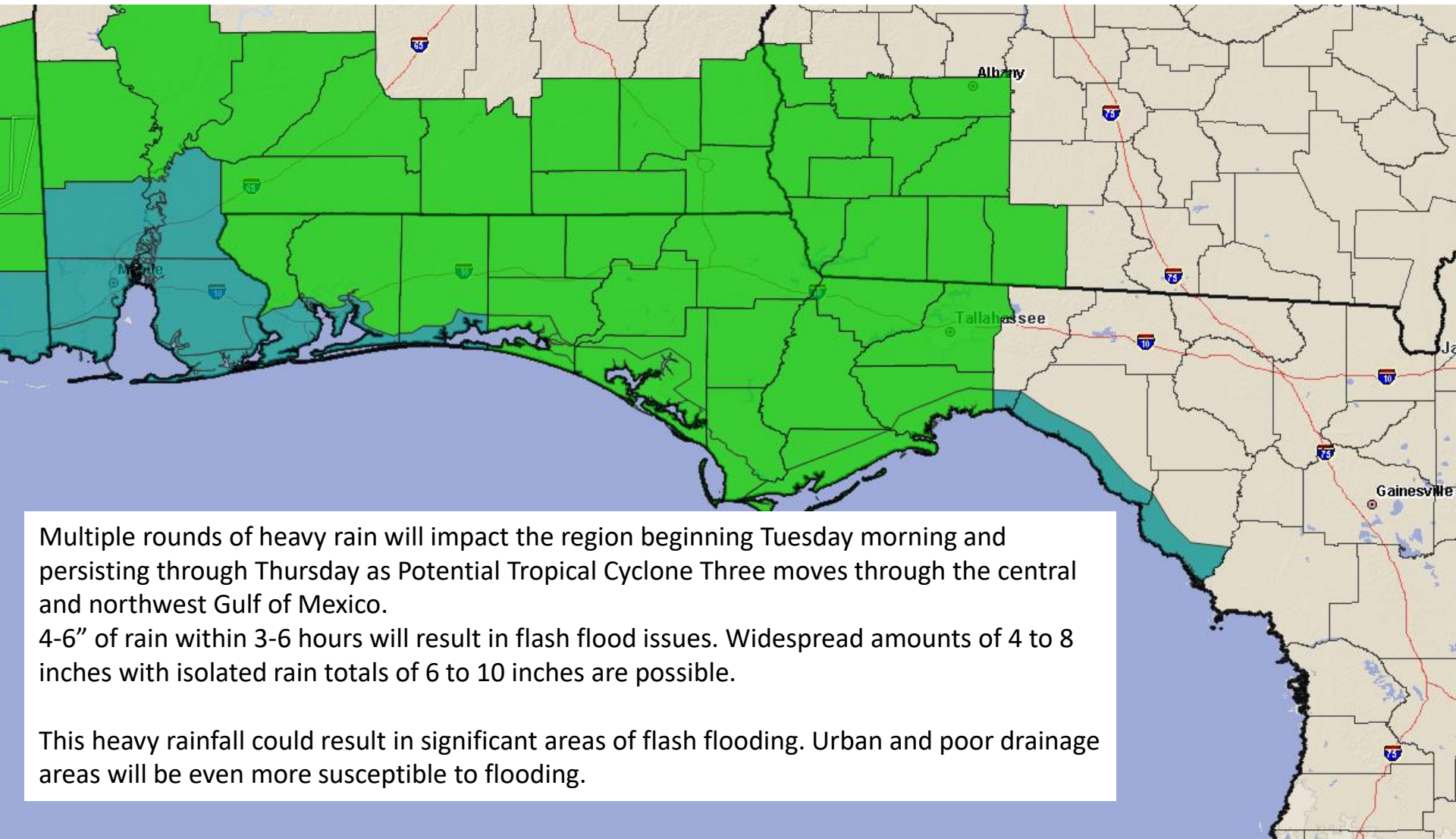


All of Florida has had well above normal rainfall over the past 30 days. This results in saturated grounds that will reduce the amount of time and rain needed to create flood conditions.

Forecast Total Rainfall Accumulations for next 3 Days



Flash Flood Watch In Effect through Thursday morning



Multiple rounds of heavy rain will impact the region beginning Tuesday morning and persisting through Thursday as Potential Tropical Cyclone Three moves through the central and northwest Gulf of Mexico.

4-6" of rain within 3-6 hours will result in flash flood issues. Widespread amounts of 4 to 8 inches with isolated rain totals of 6 to 10 inches are possible.

This heavy rainfall could result in significant areas of flash flooding. Urban and poor drainage areas will be even more susceptible to flooding.



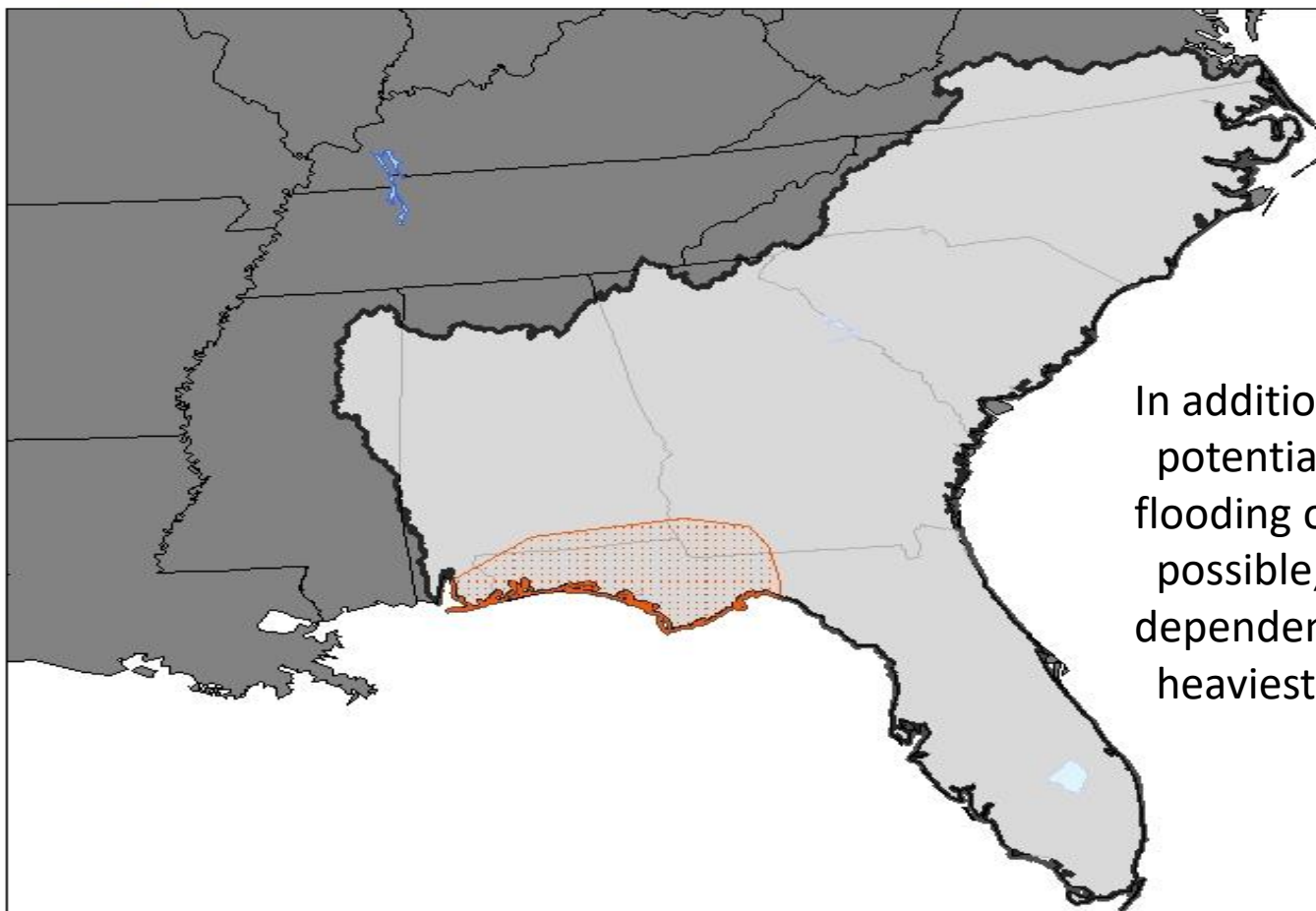
Significant River Flood Outlook



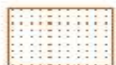
Valid: 6/19/2017 - 6/24/2017

Southeast River Forecast Center

6/19/2017 10:44:44 AM



In addition to the flash flooding potential, minor to moderate flooding on area rivers will be possible, but this will ultimately be dependent on where the heaviest rain falls.



**SIGNIFICANT RIVER
FLOODING POSSIBLE.**



**SIGNIFICANT RIVER
FLOODING LIKELY.**

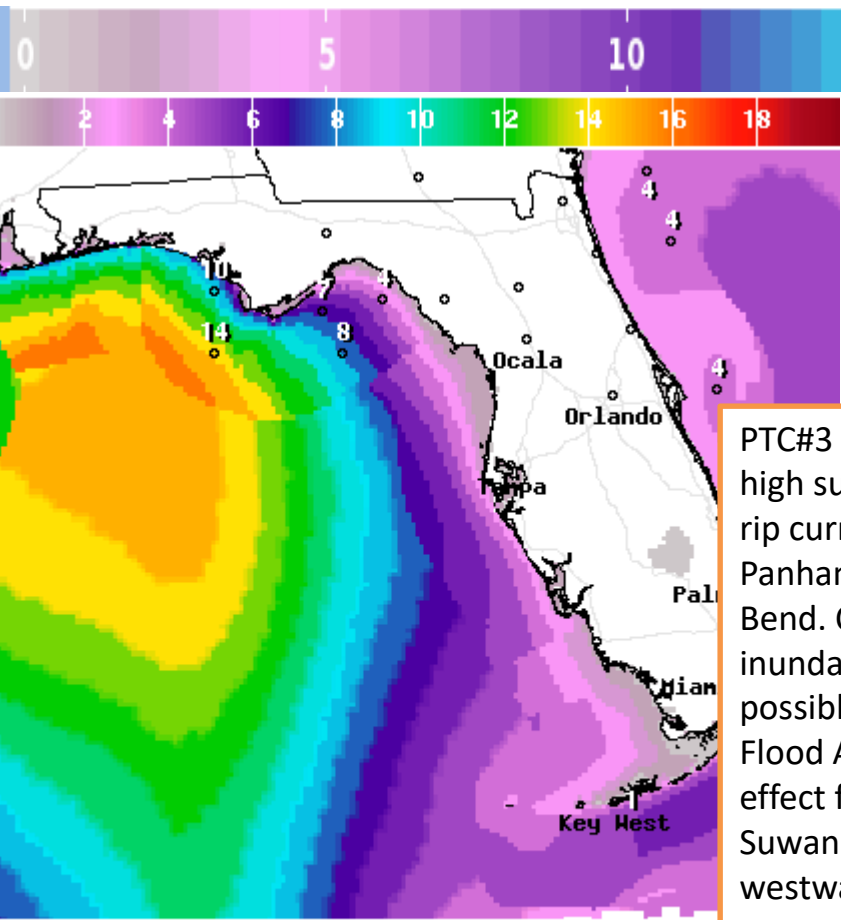


**SIGNIFICANT RIVER
FLOODING OCCURRING
OR IS IMMINENT.**

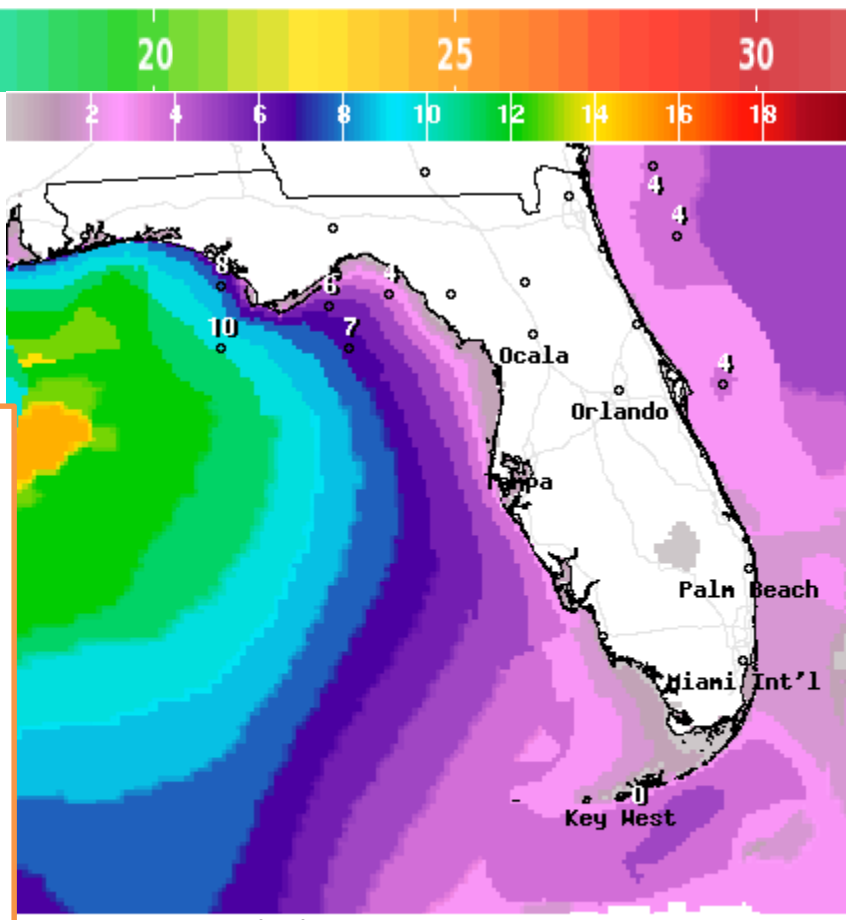
Significant River Flooding Impacts include:
Roads adversely affected. Residential,
commercial, industrial, and/or agricultural
areas affected. May require evacuation of people.

NOTE: Flash Flooding or Minor River Flooding
will NOT be included in this outlook.

Forecast Wave Heights (feet) –Tuesday & Wednesday



PTC#3 will result in high surf of 6-9' and rip currents along the Panhandle and Big Bend. Coastal inundation of 1-2' possible – Coastal Flood Advisory in effect from the Suwannee River westward.



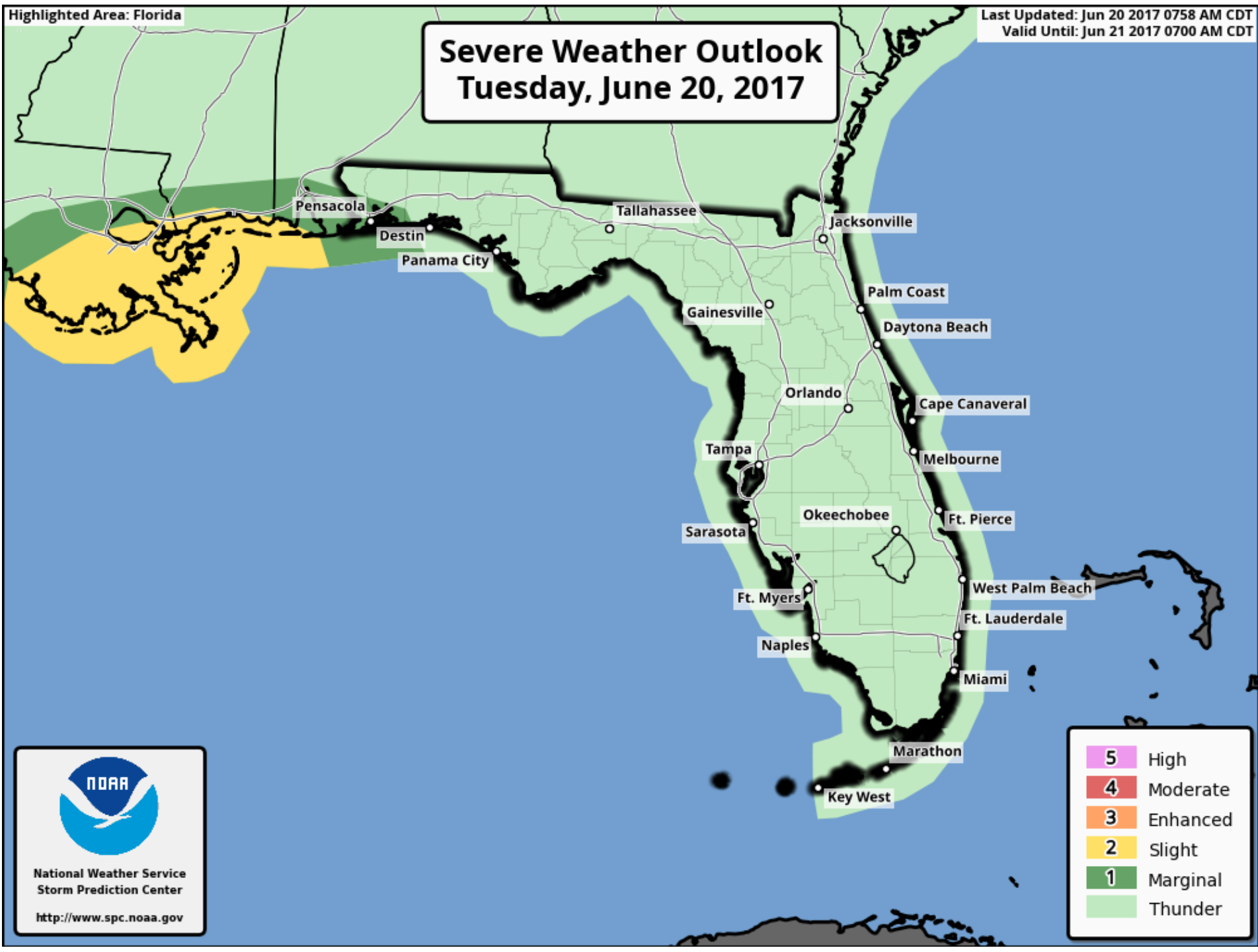
Tuesday

Wednesday

Highlighted Area: Florida

Severe Weather Outlook Tuesday, June 20, 2017

Last Updated: Jun 20 2017 0758 AM CDT
Valid Until: Jun 21 2017 0700 AM CDT



National Weather Service
Storm Prediction Center

<http://www.spc.noaa.gov>

Summary

- At 8am EDT Tuesday, Tropical Storm Bret was located in the southeastern Caribbean Sea about 165 miles west of Trinidad and 440 miles east of Aruba.
- Maximum sustained winds are near 45 mph and Bret is moving quickly west-northwest around 21mph.
- This continued motion is expected to continue, but Bret may begin to weaken later today and dissipate by Friday as it encounters hostile wind shear in the central Caribbean Sea.
- In the Gulf of Mexico, Potential Tropical Cyclone #3 still lacks a defined center of circulation, but is becoming better organized.
- Maximum sustained winds are near 40mph and is moving towards the northwest at 9mph.
- A Hurricane Hunter reconnaissance aircraft is currently enroute to investigate this system to determine if it has a defined center circulation.
- The next name on the 2017 Atlantic Storm name list is Cindy.
- Computer models are in better agreement on this system, and the range of possibilities for landfall now lies between northeastern Texas and southwest Louisiana as a weak tropical storm.
- However, upper level winds will continue to push a majority of the associated storminess well to the east of the center of the system.

Florida Outlook:

- Tropical Storm Bret is not expected to be a threat to Florida.
- Regardless of track and intensity, the main threat from to Florida from Potential Tropical Cyclone #3 will be the potential for very heavy rainfall, especially on Tuesday and Wednesday.
- Widespread rainfall amounts of 4-8" are expected along the Florida Panhandle, with locally higher amounts of 10+" possible. Flash Flood Watches are in effect from Leon County westward.
- Increased wave heights of 6-10' are also expected along the Panhandle coast and may lead to minor coastal flooding at times of high tide along with a high risk of rip currents. A Coastal Flood Advisory is in effect for the Panhandle and Big Bend coast west of the Suwannee River.
- A marginal risk for isolated tornadoes also exists for the far western Panhandle.
- River flooding will be a concern later this week into the weekend.

Another briefing packet will be issued this afternoon. For more information on this system visit the NHC website at www.nhc.noaa.gov



TROPICAL UPDATE

Created by:

Amy Godsey, Chief State Meteorologist
amy.godsey@em.myflorida.com

State Meteorological Support Unit
Florida Division of Emergency
Management

Users wishing to subscribe (approval pending) to this distribution list, register at https://public.govdelivery.com/accounts/FLDEM/subscriber/new?topic_id=SERT_Met_Tropics.

Other reports available for subscription are available at <https://public.govdelivery.com/accounts/FLDEM/subscriber/new?preferences=true>