



TROPICAL UPDATE

5 PM EDT

Monday, June 19, 2017

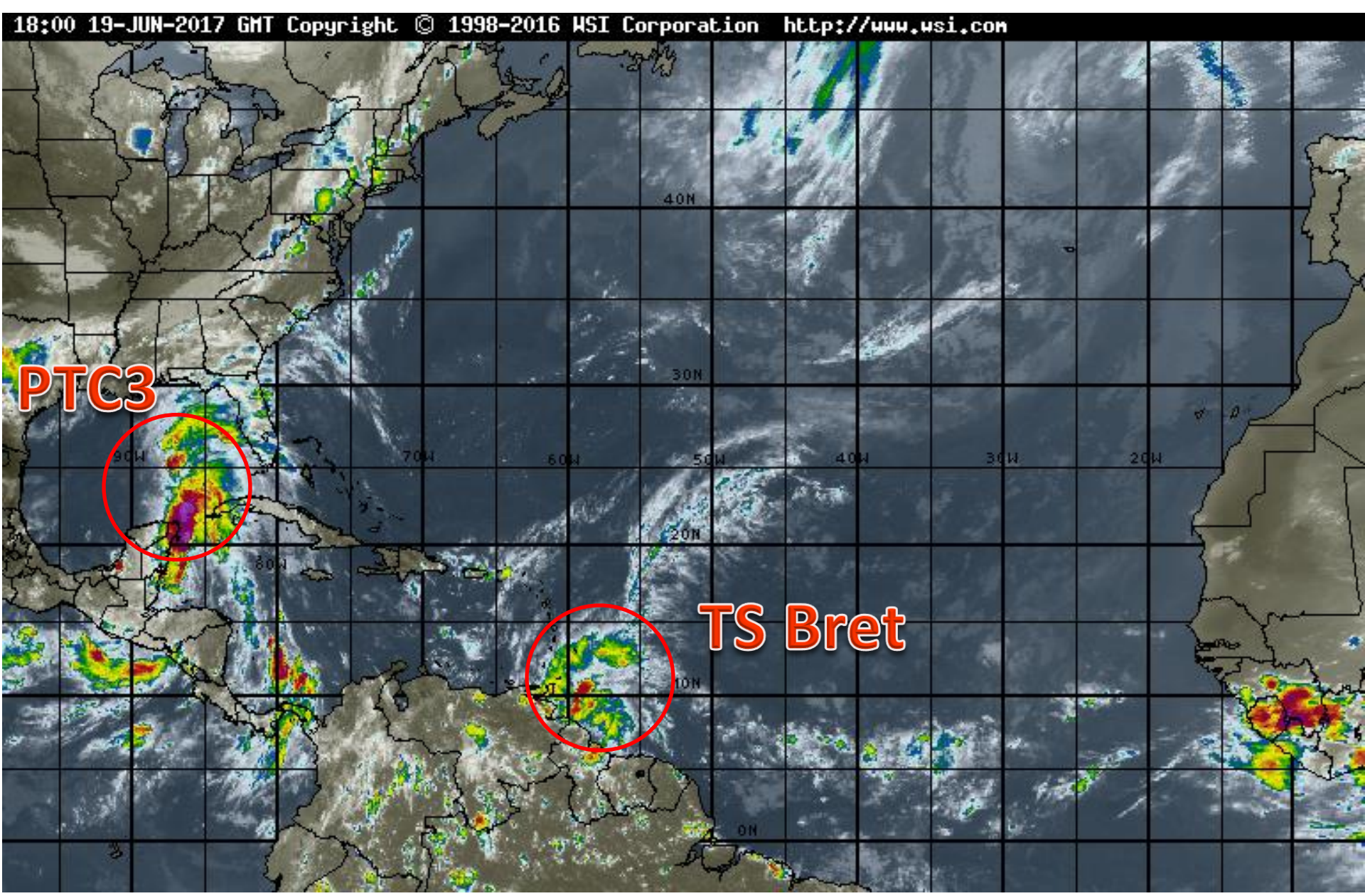
Tropical Storm Bret and

Potential Tropical Cyclone #3

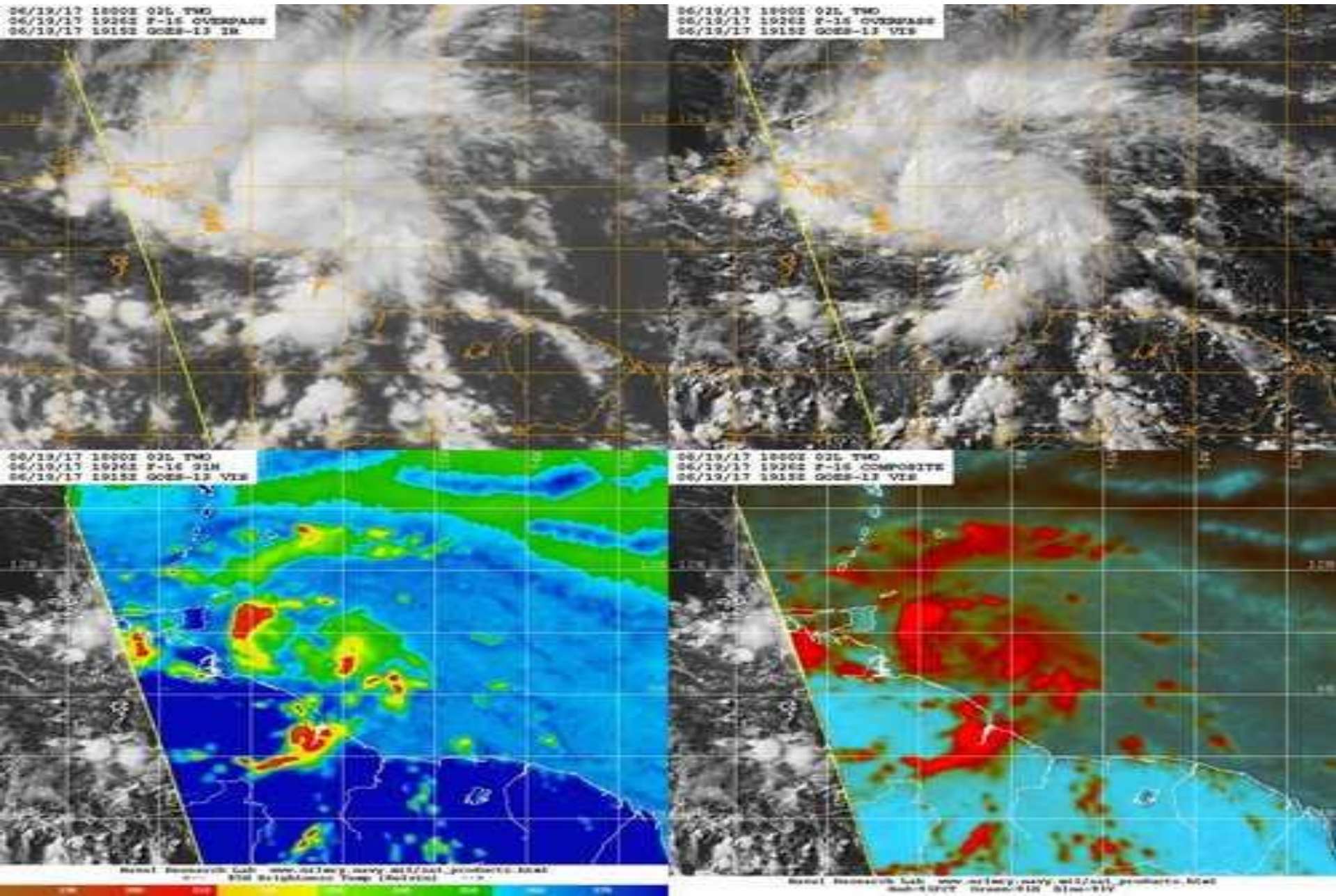
(formerly Gulf Invest Area 93L)

This update is intended for government and emergency response officials, and is provided for informational and situational awareness purposes only. Forecast conditions are subject to change based on a variety of environmental factors. For additional information, or for any life safety concerns with an active weather event please contact your County Emergency Management or Public Safety Office, local National Weather Service forecast office or visit the National Hurricane Center website at www.nhc.noaa.gov.

Atlantic Basin Satellite Image



Tropical Storm Bret Satellite Images

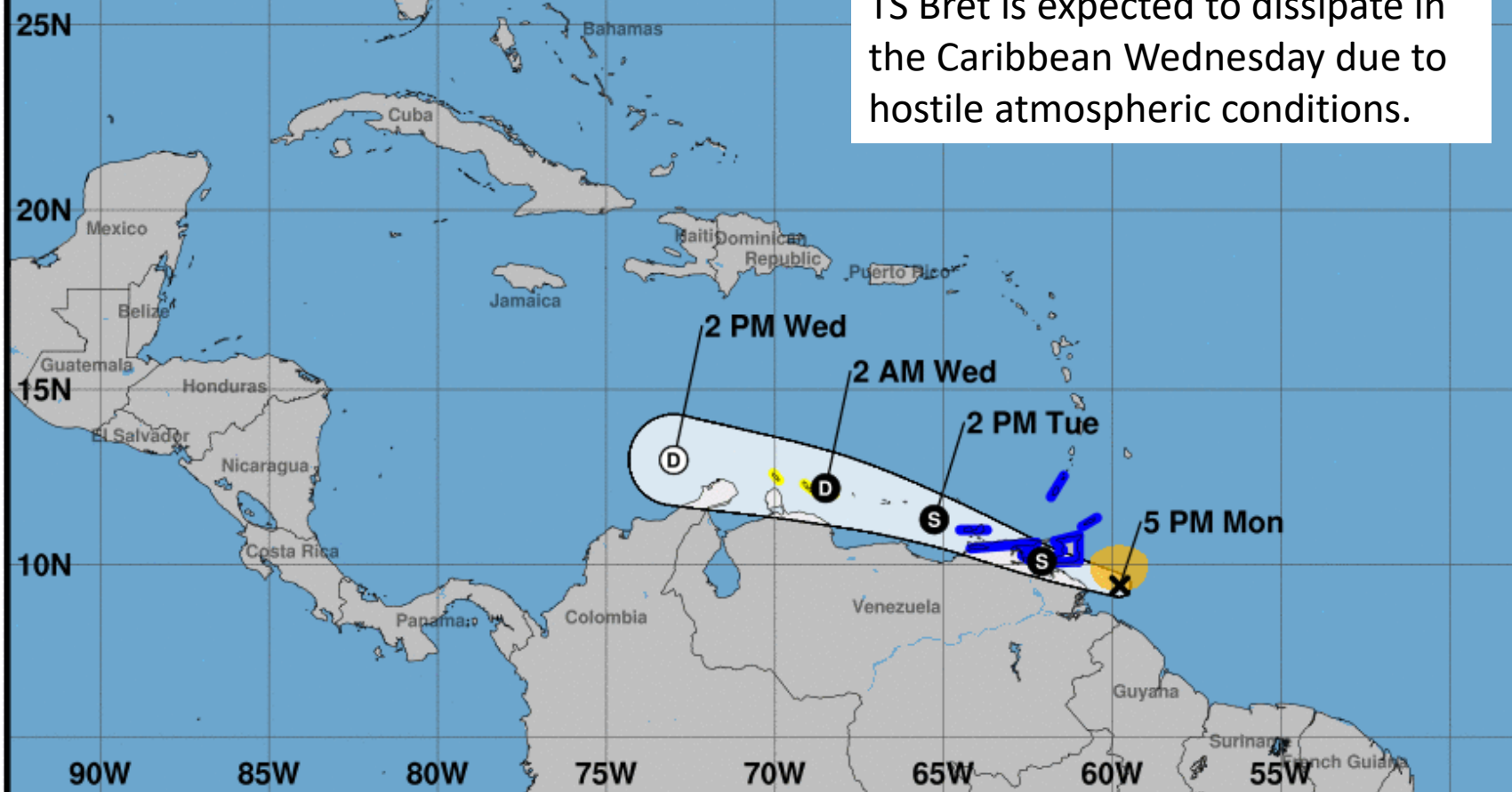




Note: The cone contains the probable path of the storm center but does not show the size of the storm. Hazardous conditions can occur outside of the cone.



TS Bret is expected to dissipate in the Caribbean Wednesday due to hostile atmospheric conditions.



Tropical Storm Bret

Monday June 19, 2017

5 PM AST Advisory 5

NWS National Hurricane Center

Current information: X

Center location 9.4 N 59.8 W

Maximum sustained wind 40 mph

Movement WNW at 30 mph

Forecast positions:

● Tropical Cyclone ○ Post/Potential TC

Sustained winds: D < 39 mph

S 39-73 mph H 74-110 mph M > 110 mph

Potential track area:

Day 1-3 Day 4-5

Watches:

Hurricane Trop Stm

Warnings:

Hurricane Trop Stm

Current wind extent:

Hurricane Trop Stm

Potential Tropical Cyclone #3

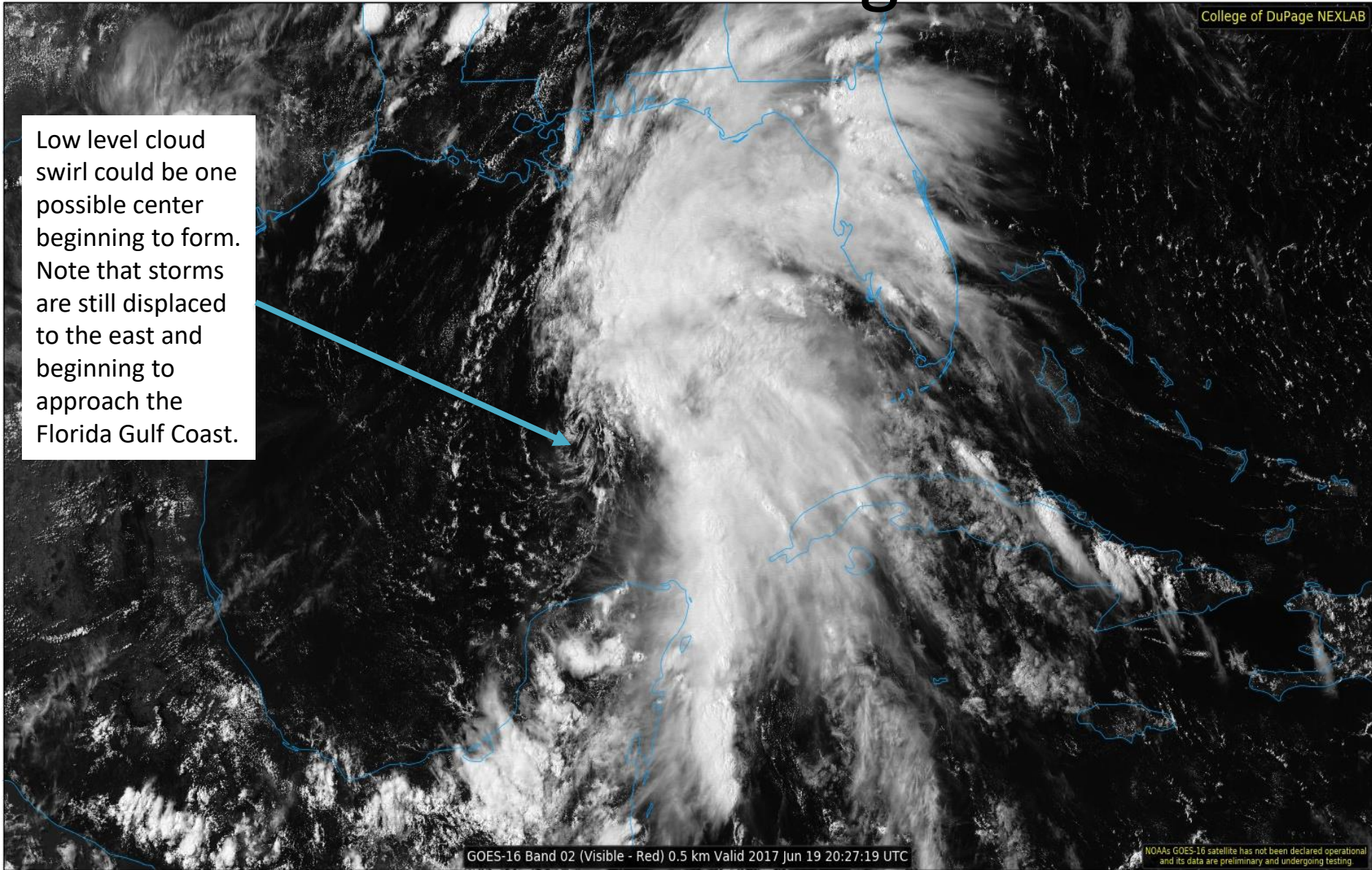
Satellite Image

College of DuPage NEXLAB

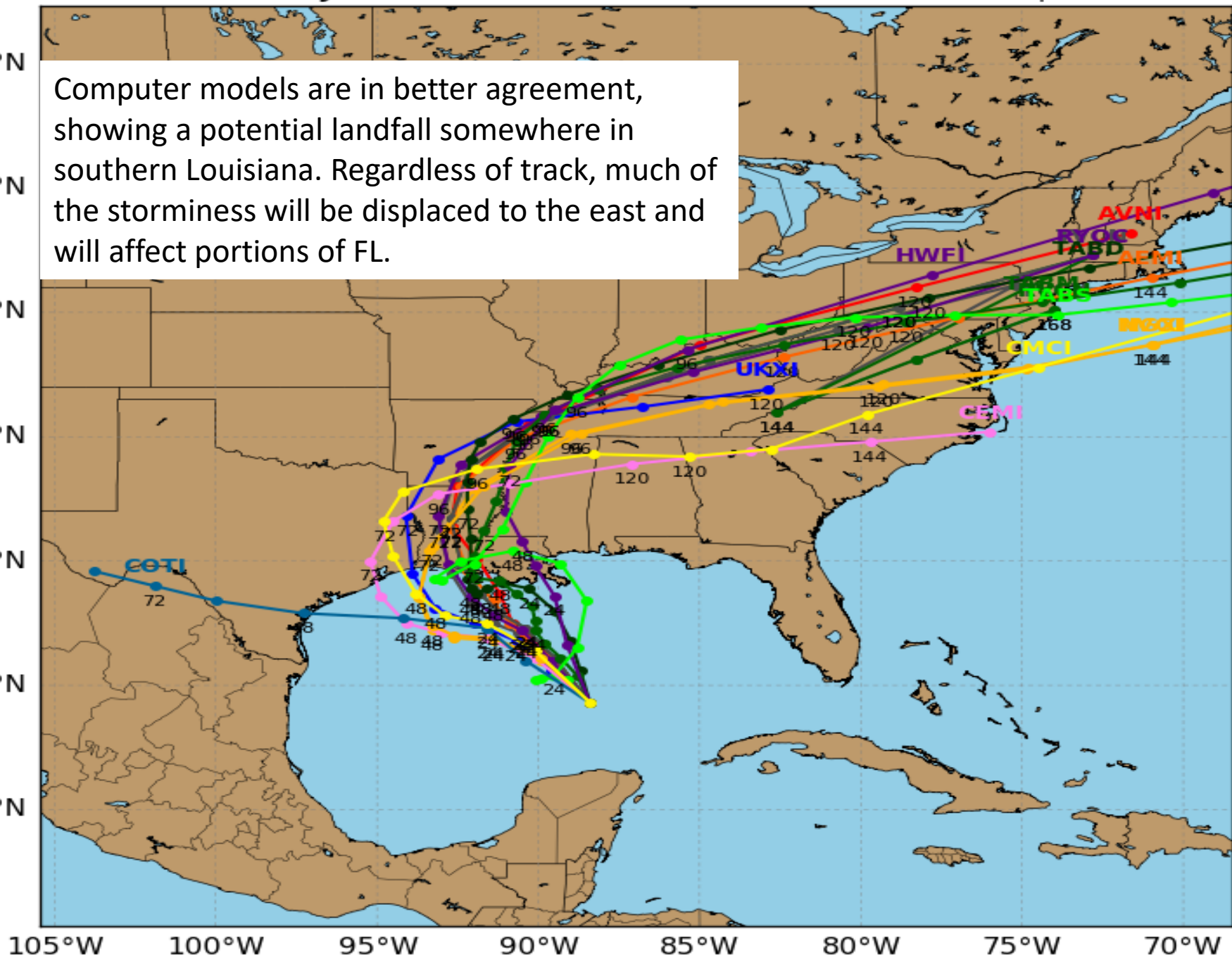
Low level cloud swirl could be one possible center beginning to form. Note that storms are still displaced to the east and beginning to approach the Florida Gulf Coast.

GOES-16 Band 02 (Visible - Red) 0.5 km Valid 2017 Jun 19 20:27:19 UTC

NOAA's GOES-16 satellite has not been declared operational and its data are preliminary and undergoing testing.

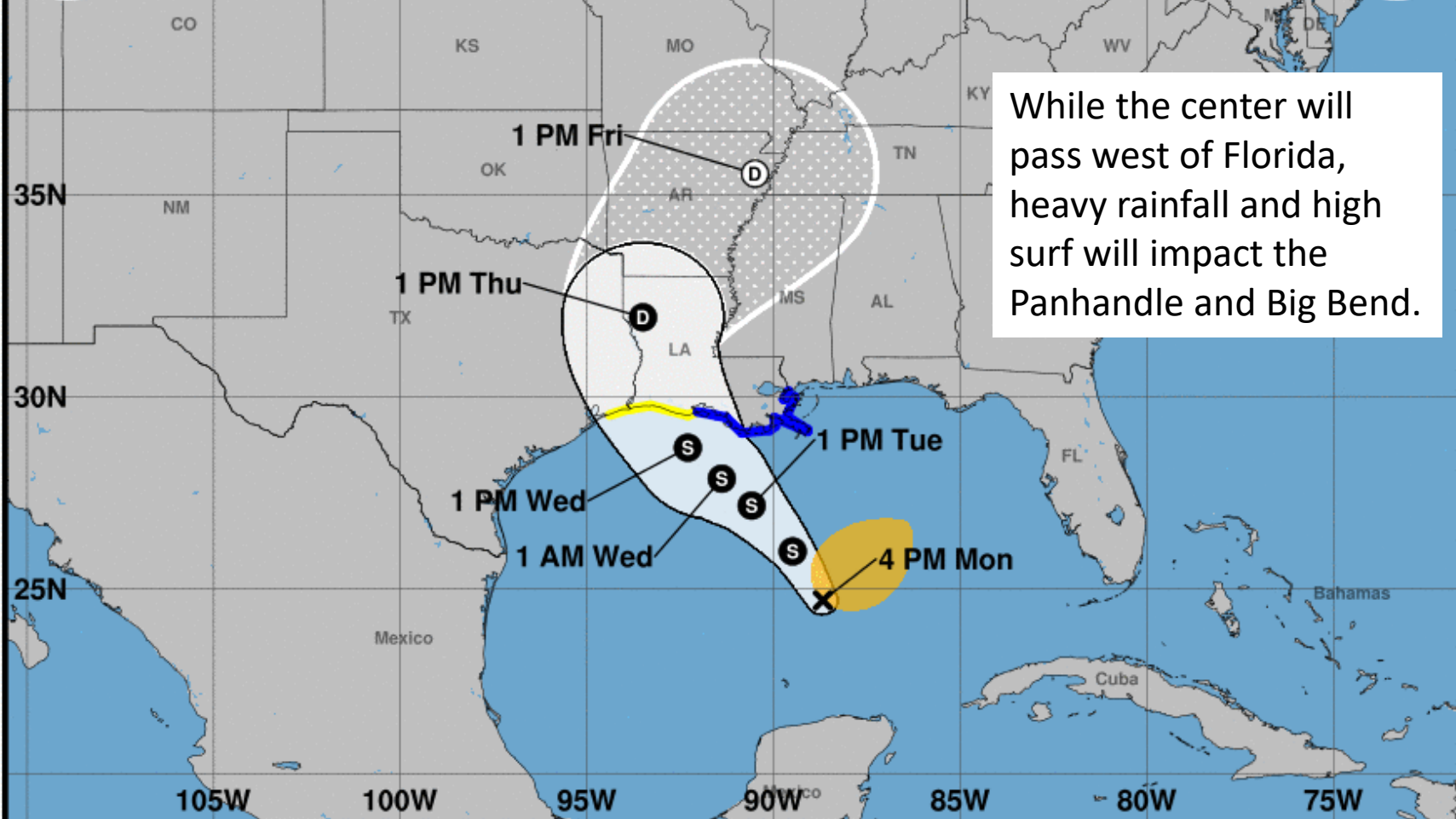


Computer models are in better agreement, showing a potential landfall somewhere in southern Louisiana. Regardless of track, much of the storminess will be displaced to the east and will affect portions of FL.





Note: The cone contains the probable path of the storm center but does not show the size of the storm. Hazardous conditions can occur outside of the cone.



Potential Tropical Cyclone Three
Monday June 19, 2017
4 PM CDT Advisory 1
NWS National Hurricane Center

Current information: x
Center location 24.7 N 88.7 W
Maximum sustained wind 40 mph
Movement N at 9 mph

Forecast positions:
● Tropical Cyclone ○ Post/Potential TC
Sustained winds: D < 39 mph
S 39-73 mph H 74-110 mph M > 110 mph

Potential track area:

Day 1-3 Day 4-5

Watches:

Hurricane Trop Stm

Warnings:

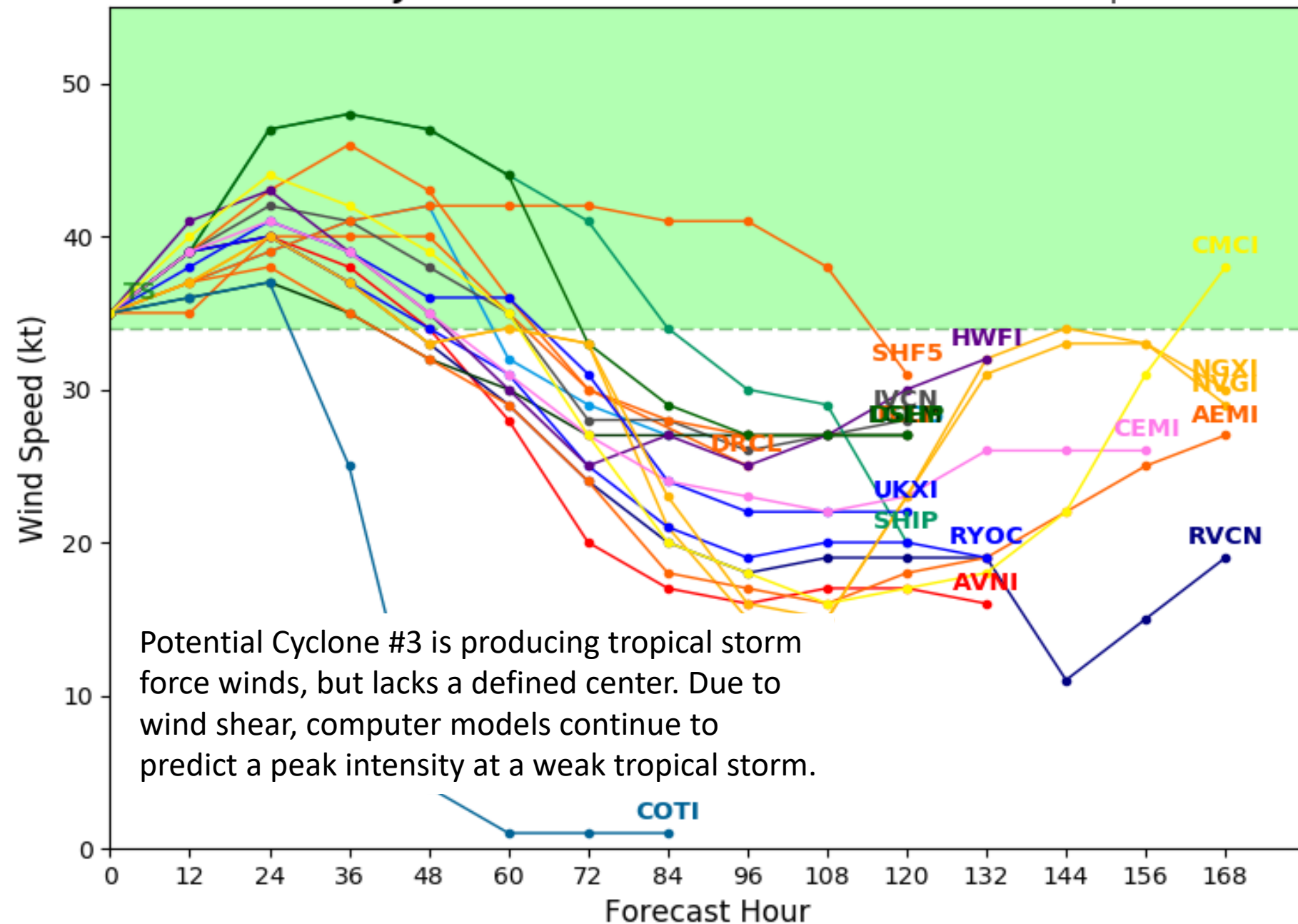
Hurricane Trop Stm

Current wind extent:

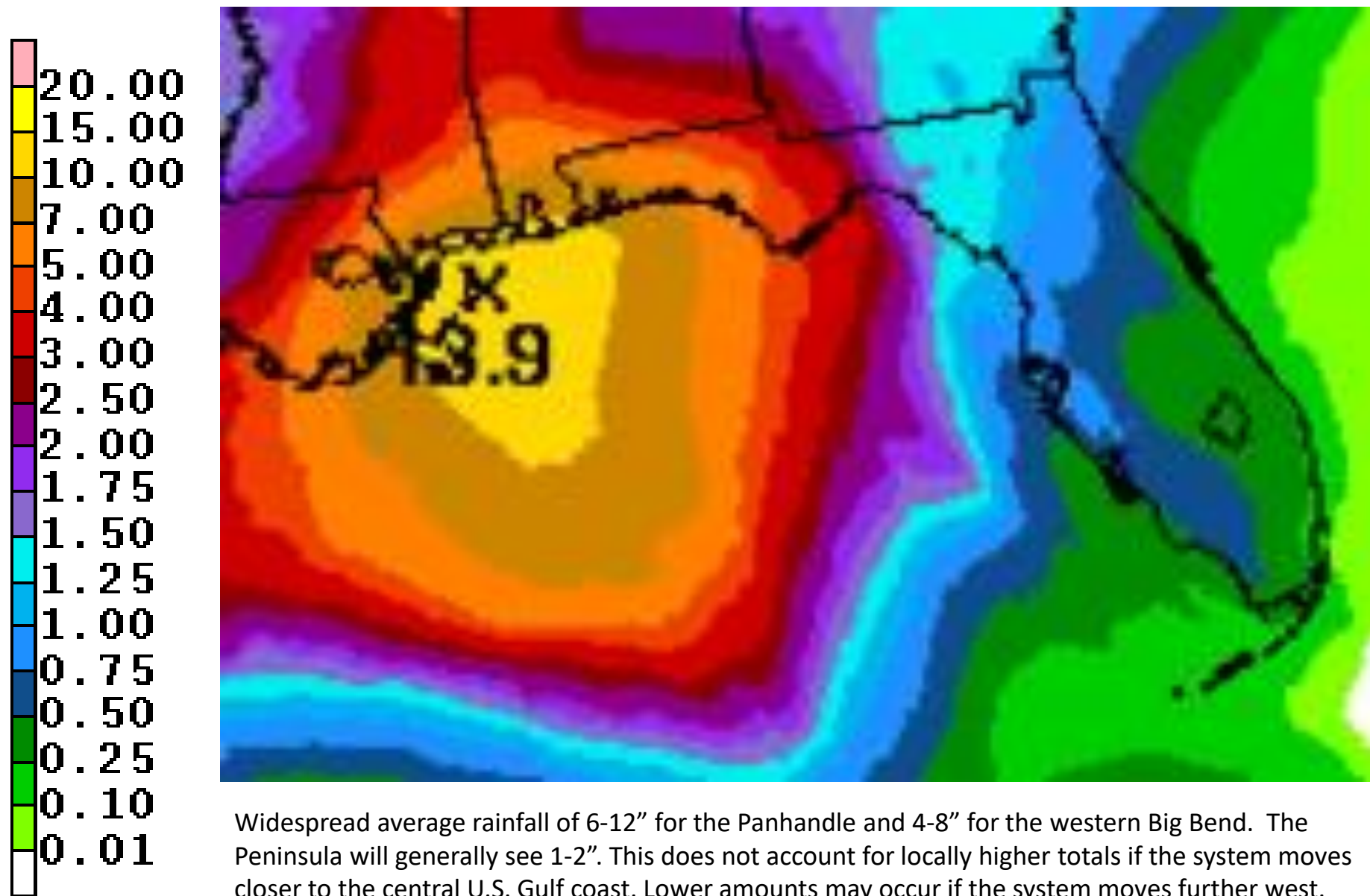
Hurricane Trop Stm

Initialized at 18z Jun 19 2017

Levi Cowan - tropicaltidbits.com



Forecast Total Rainfall Accumulations for next 5 Days



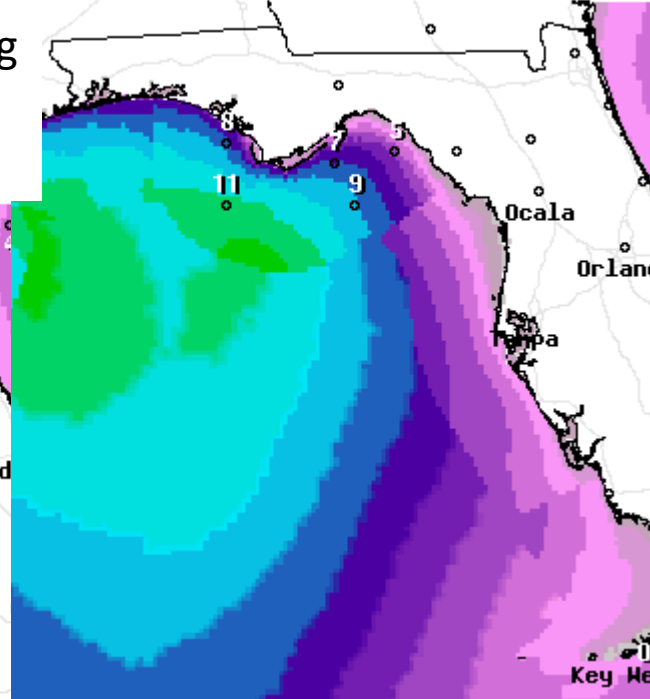
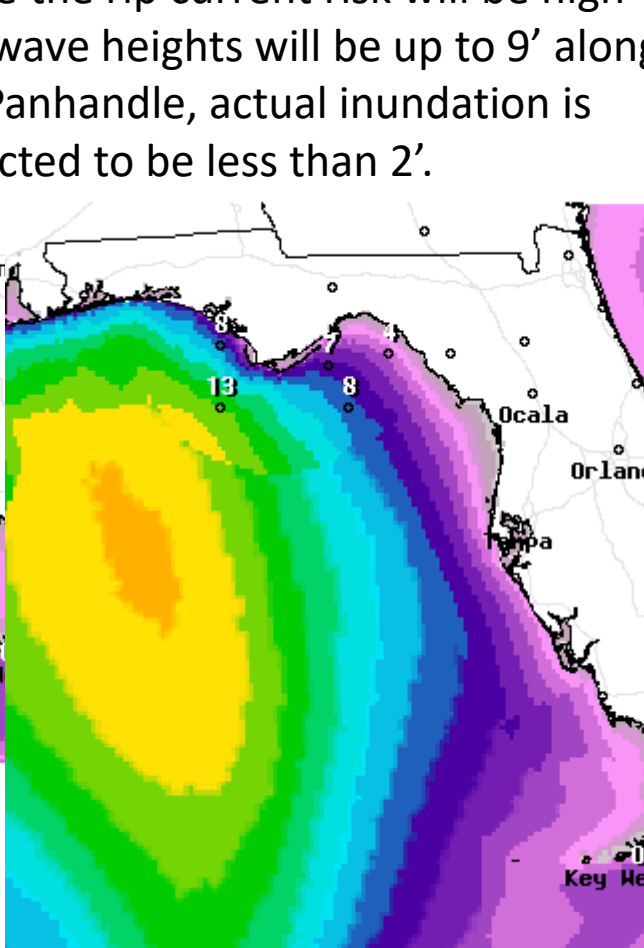
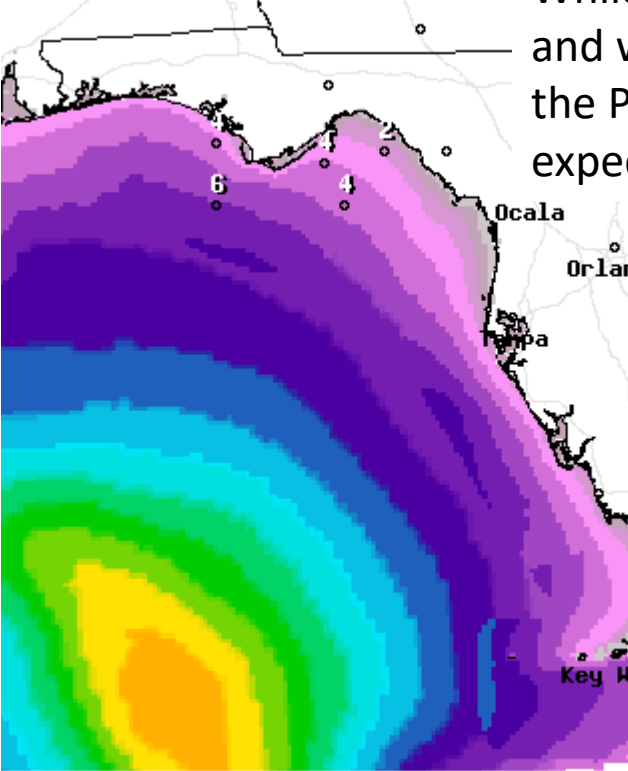


Flash Flood Watches have been issued for Tallahassee and all locations to the west. This Flash Flood Watch is in effect from tomorrow morning through Thursday.

Forecast Wave Heights (feet) – Monday Night, Tuesday & Wednesday



While the rip current risk will be high and wave heights will be up to 9' along the Panhandle, actual inundation is expected to be less than 2'.



**Monday
Night**

Tuesday

Wednesday

Summary

- As of 5pm EDT Monday, Hurricane Hunters found a closed center in Potential Tropical Cyclone #2 and it was upgraded to Tropical Storm Bret.
- Tropical Storm Bret is located about 125 mi SE of Trinidad just offshore of Venezuela with sustained winds of 40 mph. TS Bret will move into the eastern Caribbean before dissipating Wednesday.
- Further west in the southern Gulf of Mexico, Hurricane Hunters investigated, but did not find a closed low in Invest 93L. However, because the system is less than 36 hours from impacting land, an advisory was issued and the system is now Potential Tropical Cyclone #3.
- Florida is not included in any part of the cone, and is not under any Tropical Storm watches or warnings. **HOWEVER, Florida is still expected to see impacts in the form of high surf and heavy rain.**
- The National Hurricane Center is predicting an 80% chance that PTC #3 becomes a tropical storm within the next 48 hours. If it does develop a closed low, it would be named Cindy.
- Another Hurricane Hunter reconnaissance flight is expected tomorrow morning.
- Computer models are gradually getting into better agreement on the eventual track of this system, but are still prone to error due to a lack of a defined center of circulation. The range of possibilities now lies between east-central Texas and southeast Louisiana.
- Environmental conditions will become increasingly unfavorable and limited intensification is forecast to occur. The system is highly sheared with most of the wind and rainfall on the east side.

Florida Outlook:

- Tropical Storm Bret is not expected to be a threat to Florida.
- Regardless of track and intensity, the main threat from Potential Tropical Cyclone #3 will be the potential for very heavy rainfall starting tomorrow morning through Thursday.
- Widespread rainfall amounts of 6-12" are expected along the Florida Panhandle, with locally higher amounts possible especially if the system moves closer to the central U.S. Gulf Coast. The western Big Bend will see a widespread 4-8" with lesser amounts east. The Peninsula will see 1-2".
- A Flash Flood Watch is in effect tomorrow morning through Thursday from Tallahassee west through the Panhandle in anticipation of the heavy rain.
- Increased wave heights of 4-8' and a high risk of rip currents are also expected along the Panhandle coast. However, actual inundation will be less than 2' during high tides Tuesday and Wednesday.

Another briefing packet will be issued tomorrow morning. For more information on these systems visit the NHC website at www.nhc.noaa.gov



TROPICAL UPDATE

Created by:

Michael Spagnolo, Deputy State Meteorologist
michael.spagnolo@em.myflorida.com

State Meteorological Support Unit
Florida Division of Emergency
Management

Users wishing to subscribe (approval pending) to this distribution list, register at https://public.govdelivery.com/accounts/FLDEM/subscriber/new?topic_id=SERT_Met_Tropics.

Other reports available for subscription are available at <https://public.govdelivery.com/accounts/FLDEM/subscriber/new?preferences=true>