



TROPICAL UPDATE

5 PM EDT

Sunday, June 18, 2017

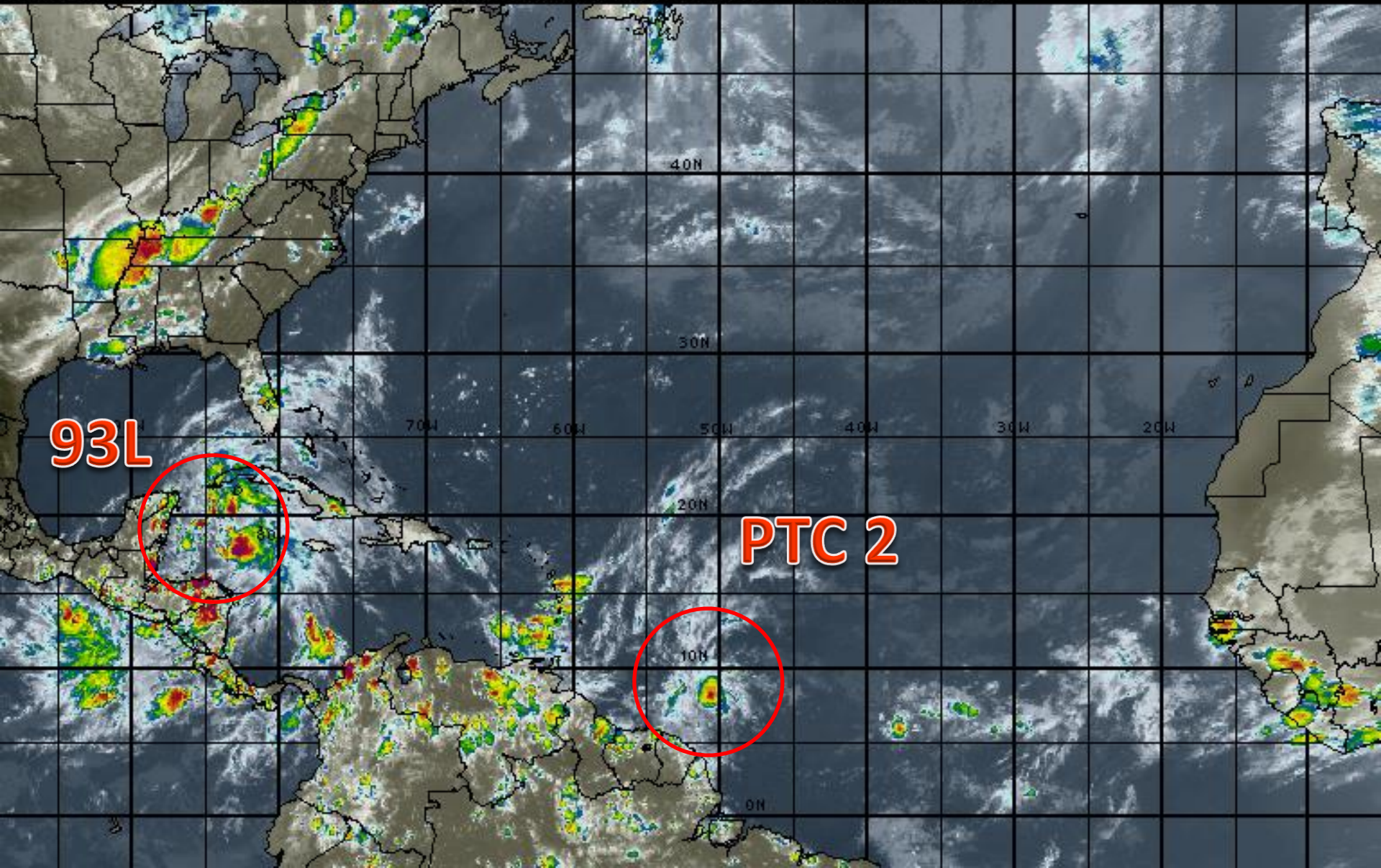
**Potential Tropical Cyclone #2
(previously 92L)**

Invest Area 93L

This update is intended for government and emergency response officials, and is provided for informational and situational awareness purposes only. Forecast conditions are subject to change based on a variety of environmental factors. For additional information, or for any life safety concerns with an active weather event please contact your County Emergency Management or Public Safety Office, local National Weather Service forecast office or visit the National Hurricane Center website at www.nhc.noaa.gov.

Atlantic Basin Satellite Image

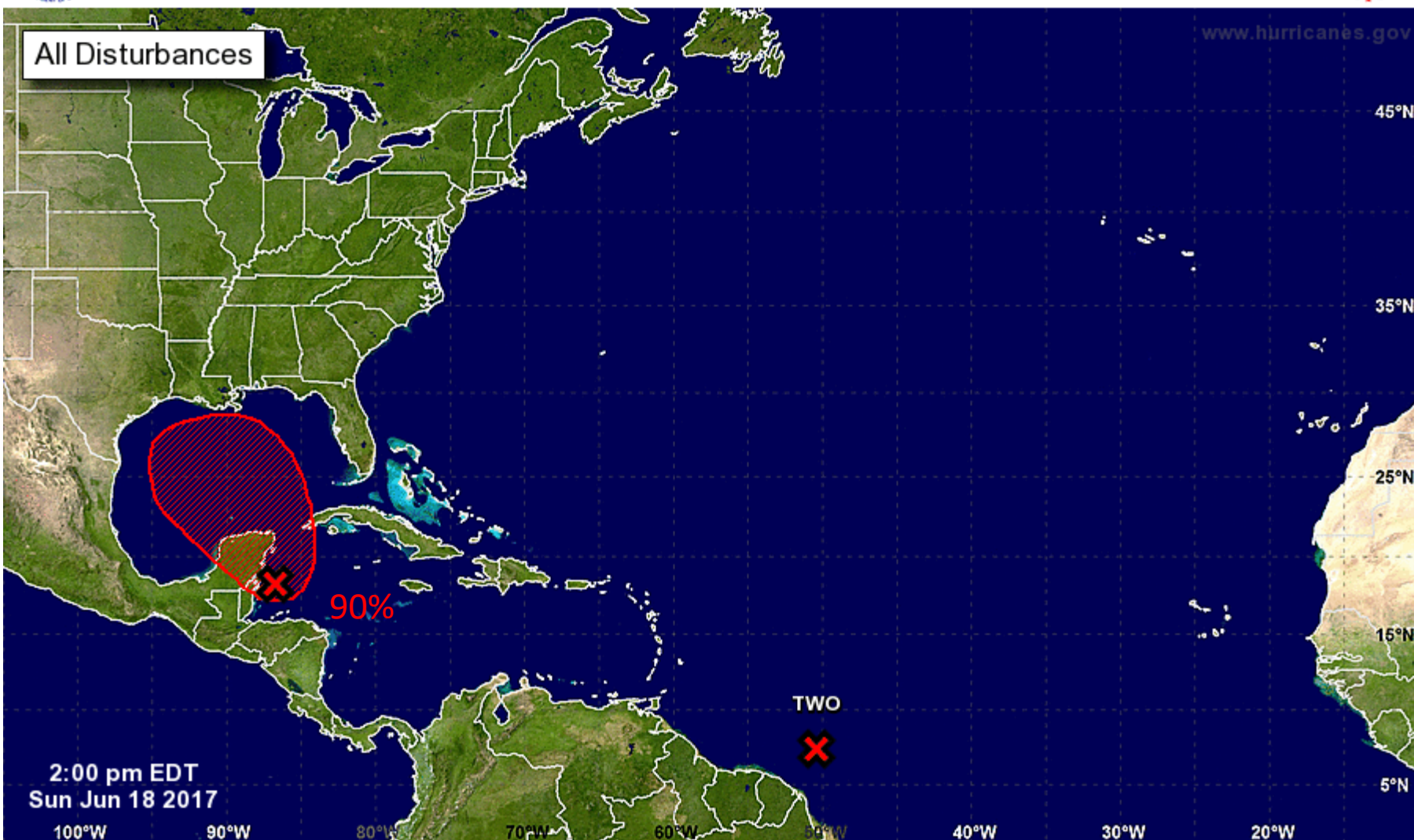
21:00 18-JUN-2017 GMT Copyright © 1998-2016 WSI Corporation <http://www.wsi.com>





Five-Day Graphical Tropical Weather Outlook

National Hurricane Center Miami, Florida

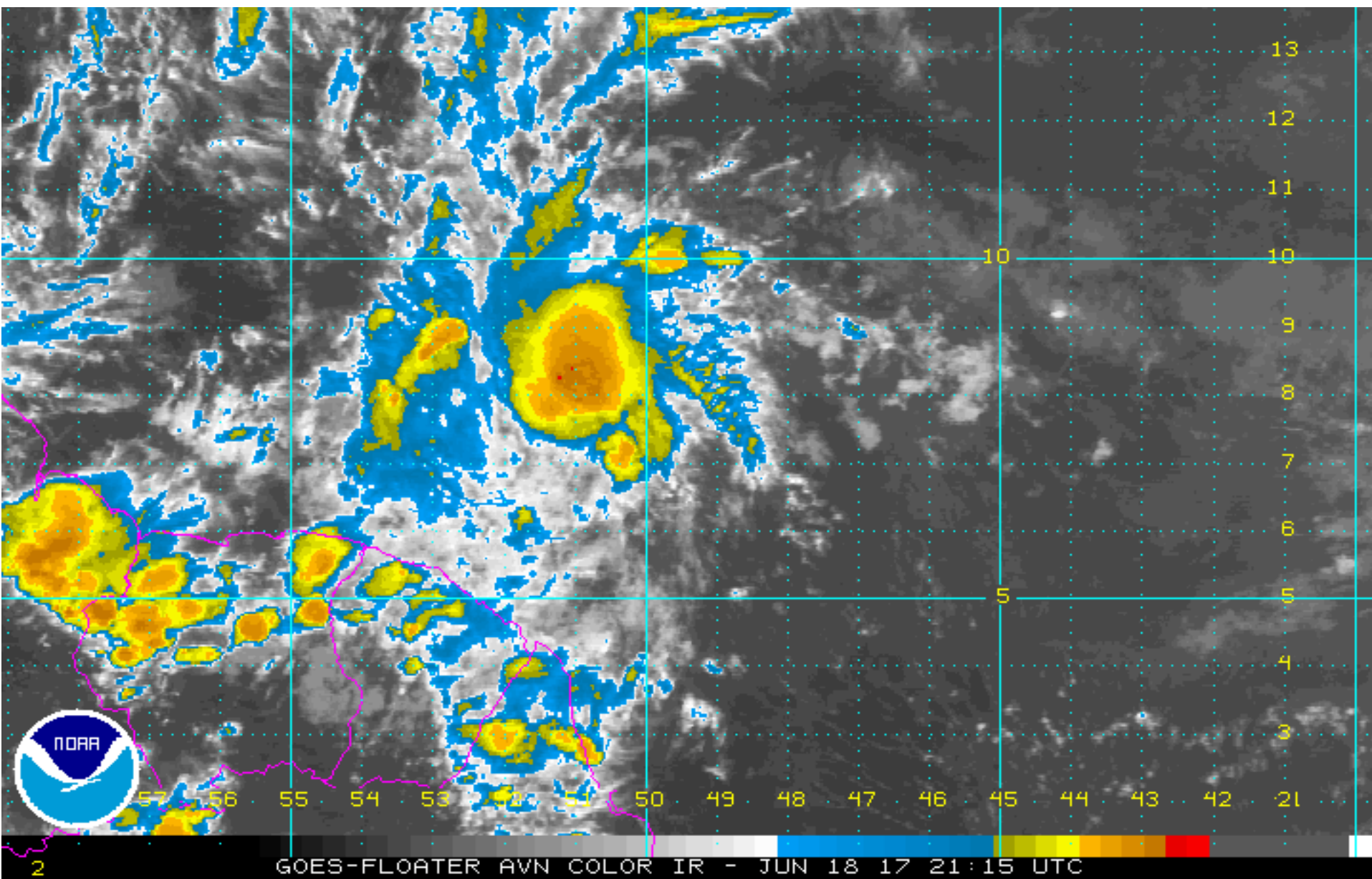


Current Disturbances and Five-Day Cyclone Formation Chance: ✖ < 40% ✖ 40-60% ✖ > 60%

Tropical or Sub-Tropical Cyclone: ○ Depression 🌀 Storm 🌀 Hurricane

⊗ Post-Tropical Cyclone ✖ Remnants

Potential Cyclone #2 Satellite Image





Note: The cone contains the probable path of the storm center but does not show the size of the storm. Hazardous conditions can occur outside of the cone.



Potential Tropical Cyclone Two
Sunday June 18, 2017
5 PM AST Advisory 1
NWS National Hurricane Center

Current information: x
Center location 7.5 N 50.4 W
Maximum sustained wind 35 mph
Movement W at 23 mph

Forecast positions:
● Tropical Cyclone ○ Post/Potential TC
Sustained winds: D < 39 mph
S 39-73 mph H 74-110 mph M > 110 mph

Potential track area:

Day 1-3 Day 4-5

Watches:

Hurricane Trop Stm

Warnings:

Hurricane Trop Stm

Current wind extent:

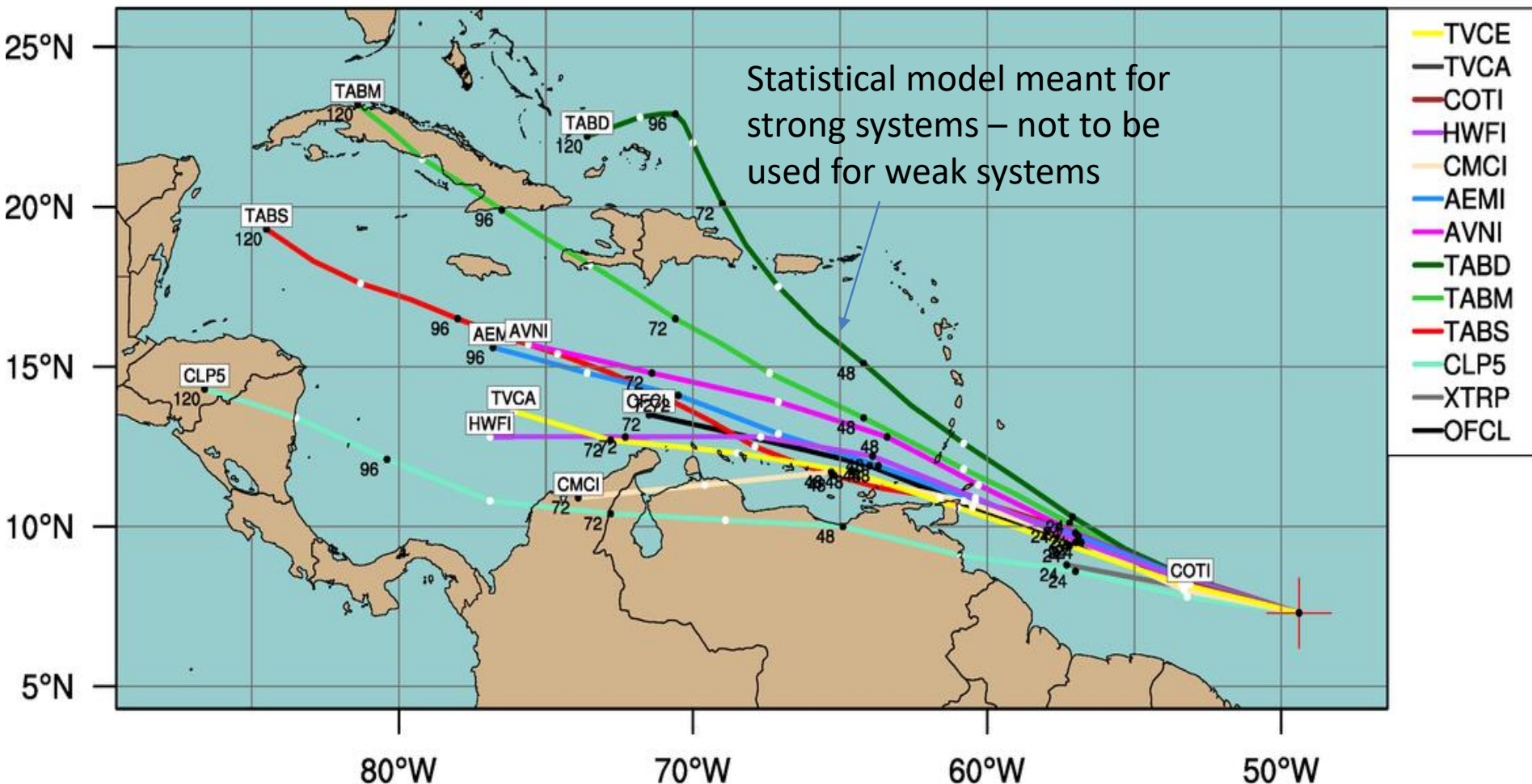
Hurricane Trop Stm

DISTURBANCE TWO (AL02)

Early-cycle track guidance initialized at 1800 UTC, 18 June 2017

Current Intensity: 30 kt

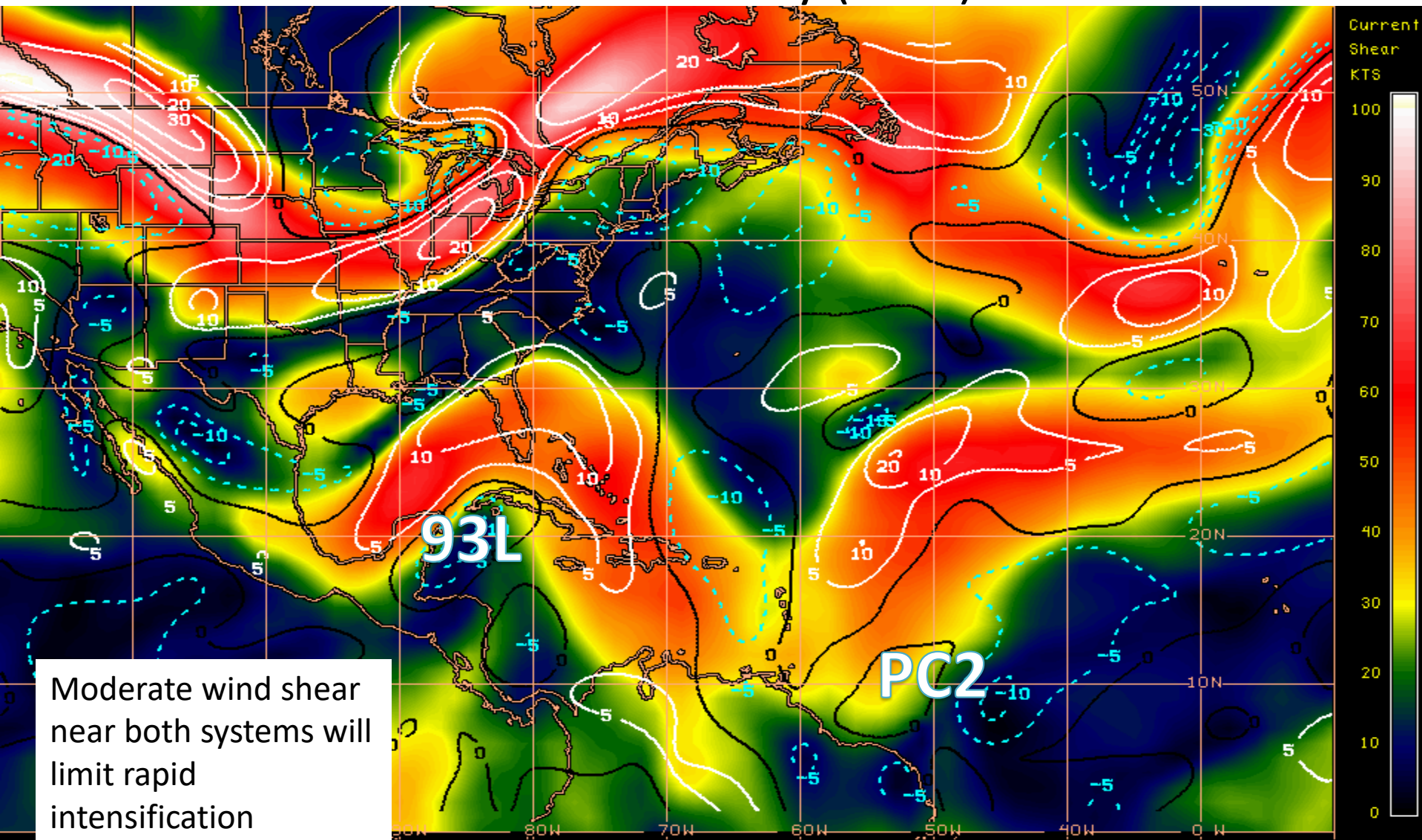
Current Basin: North Atlantic



By using this plot, the user agrees to the UCAR Terms of Use
which can be accessed at: <http://www2.ucar.edu/terms-of-use>

Plot generated at 2120 UTC 18 June 2017

Current Wind Shear (shaded) and Shear Tendency (lines)



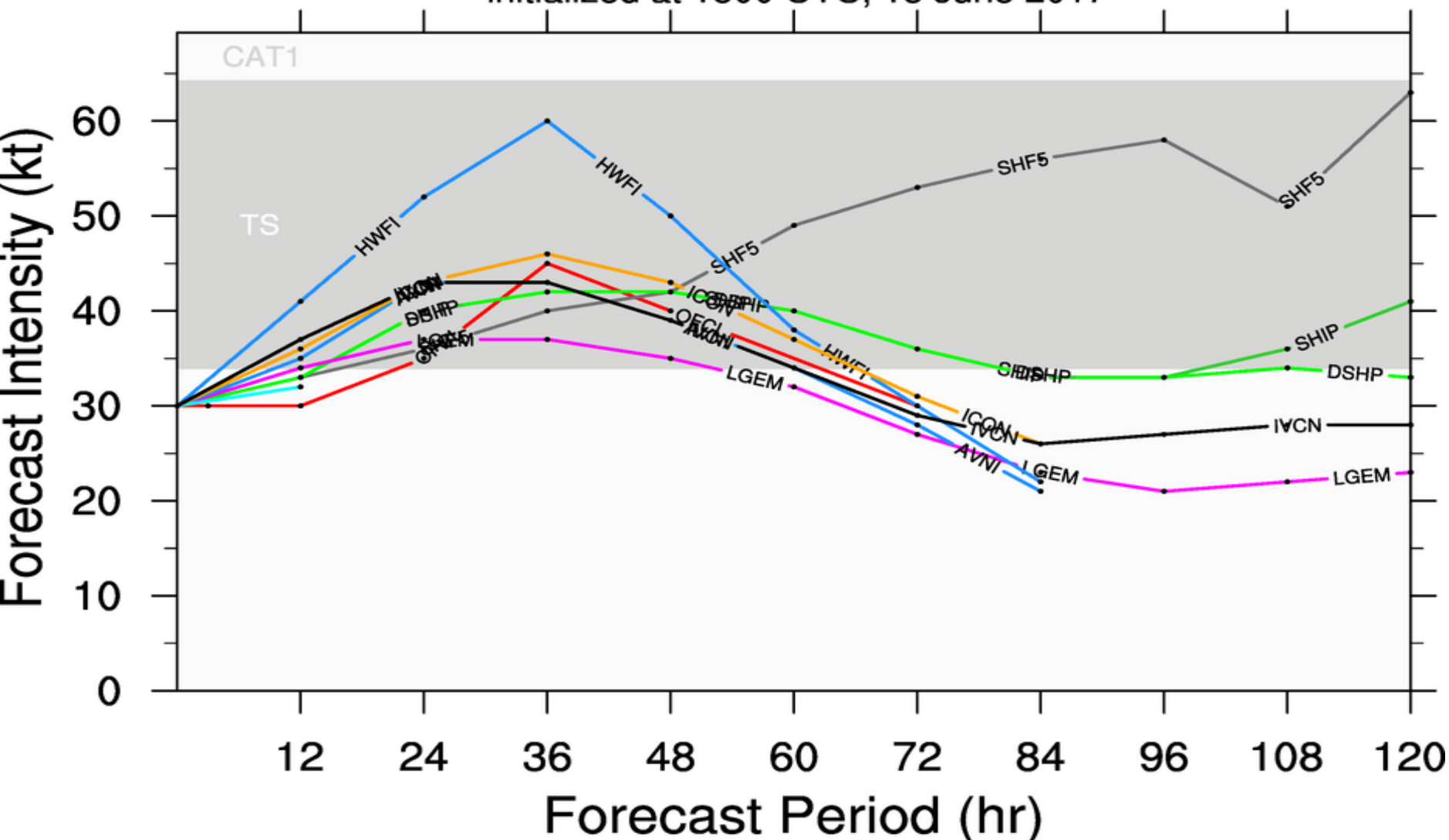
Moderate wind shear
near both systems will
limit rapid
intensification

Shear Tendency (KTS) Over Past 24 Hours: Increasing ——— Decreasing - - - -

DISTURBANCE TWO (AL02)

Early-cycle intensity guidance

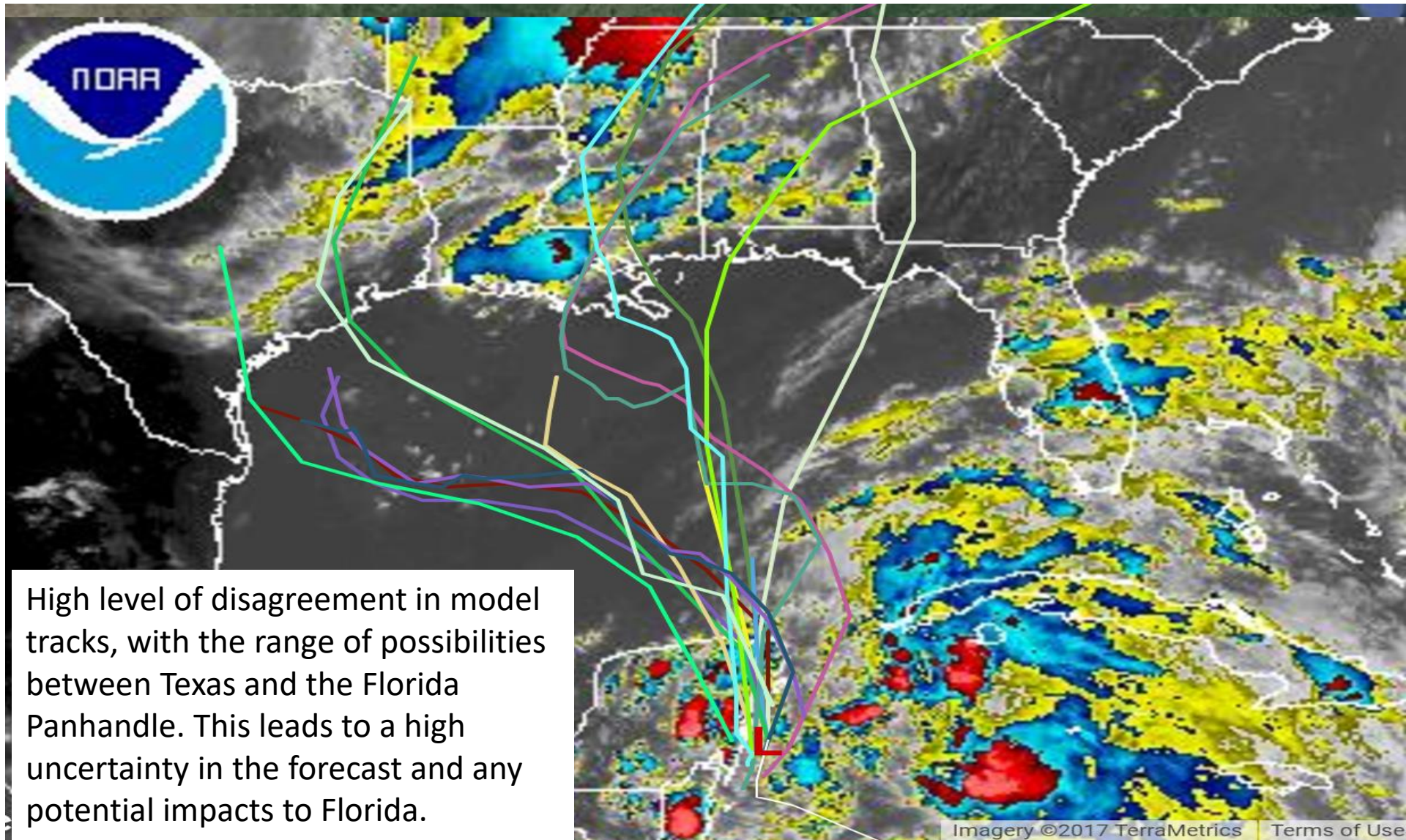
initialized at 1800 UTC, 18 June 2017



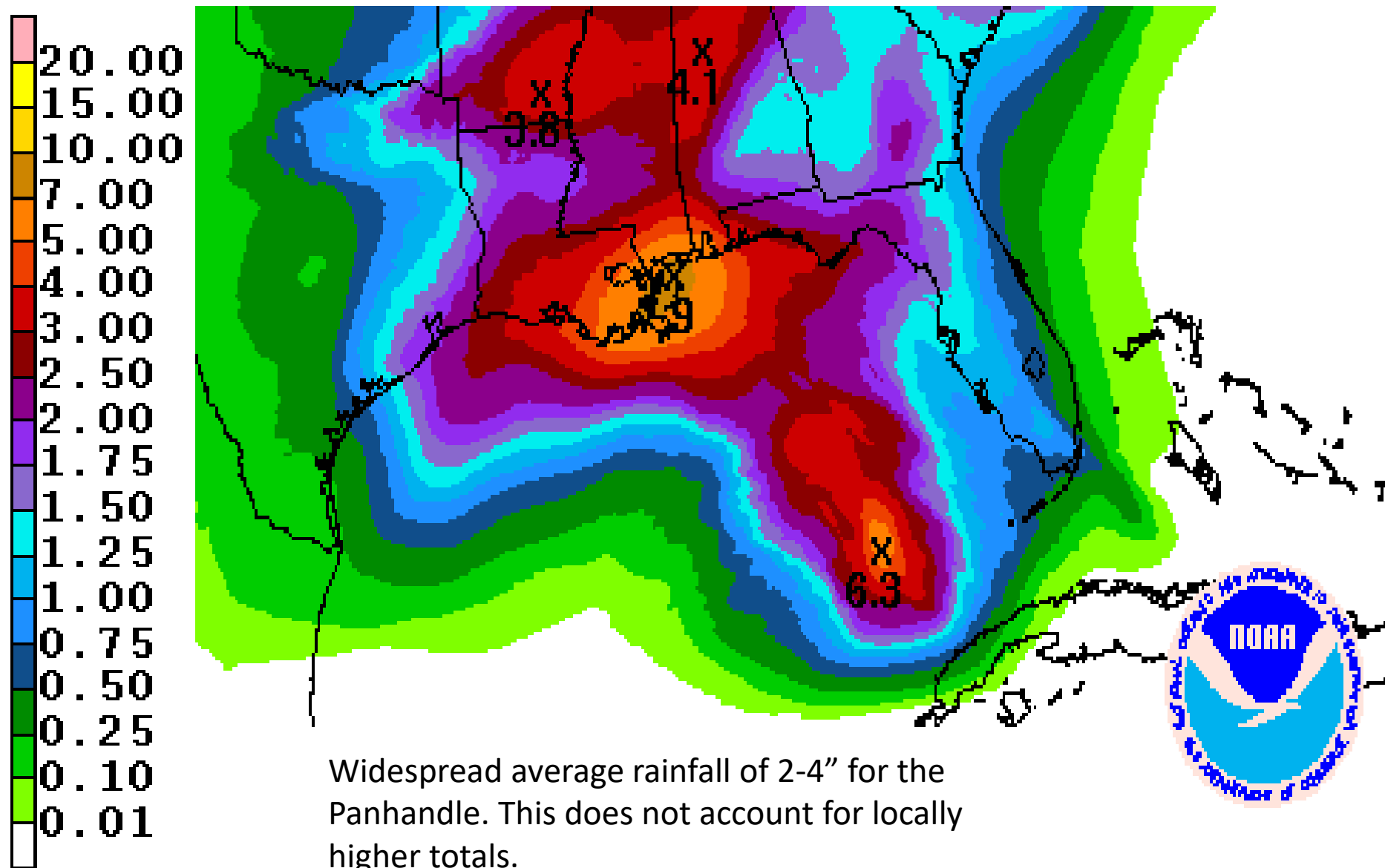
By using this plot, the user agrees to the UCAR Terms of Use
which can be accessed at: <http://www2.ucar.edu/terms-of-use>

Plot generated at 2121 UTC 18 June 2017

93L Satellite Image and Computer Model Tracks



Forecast Total Rainfall Accumulations for next 7 Days



Summary

- At 5pm EDT Sunday, Invest Area 92L in the central Atlantic was designated as “Potential Tropical Cyclone” #2.
- Although the system does not have a defined center of circulation, tropical storm impacts are expected in the Windward Islands within the next 36 hours.
- If the system acquires a center of circulation, it would be named a tropical storm. A Hurricane Hunter reconnaissance mission is currently scheduled for Monday.
- Regardless, Potential Tropical Cyclone 2 is forecast to move west-northwest through the next 5 days into the eastern and central Caribbean Sea, where it will likely begin to weaken and eventually dissipate due to hostile environmental conditions.
- Further west, Invest 93L remains disorganized and the hurricane hunter mission into the system for today was cancelled. Another reconnaissance aircraft will investigate Monday afternoon.
- Computer models remain in disagreement in the eventual track of this system, largely due to a lack of a defined center of circulation. However, environmental conditions will become increasingly unfavorable and limited intensification is forecast to occur.
- Nonetheless, this system has a high (90%) chance of becoming a tropical storm within the next 5 days and should be closely monitored.

Florida Outlook:

- Potential Cyclone #2 is not expected to be a threat to Florida.
- Regardless of track and intensity, the main threat from 93L will be the potential for very heavy rainfall, especially in the Tuesday through Thursday timeframe this week.
- Widespread rainfall amounts of 2-4” are expected along the Florida Panhandle, with locally higher amounts possible, especially if the system moves closer to the central U.S. Gulf Coast.
- Increased wave heights are also possible and may lead to minor coastal flooding at times of high tide on Tuesday along with an elevated risk of rip currents.

Another briefing packet will be issued Monday morning. For more information on this system visit the NHC website at www.nhc.noaa.gov



TROPICAL UPDATE

Created by:

Amy Godsey, Chief State Meteorologist
amy.godsey@em.myflorida.com

State Meteorological Support Unit
Florida Division of Emergency
Management

Users wishing to subscribe (approval pending) to this distribution list, register at https://public.govdelivery.com/accounts/FLDEM/subscriber/new?topic_id=SERT_Met_Tropics.

Other reports available for subscription are available at <https://public.govdelivery.com/accounts/FLDEM/subscriber/new?preferences=true>