



TROPICAL UPDATE

12 PM EDT

Sunday, June 18, 2017

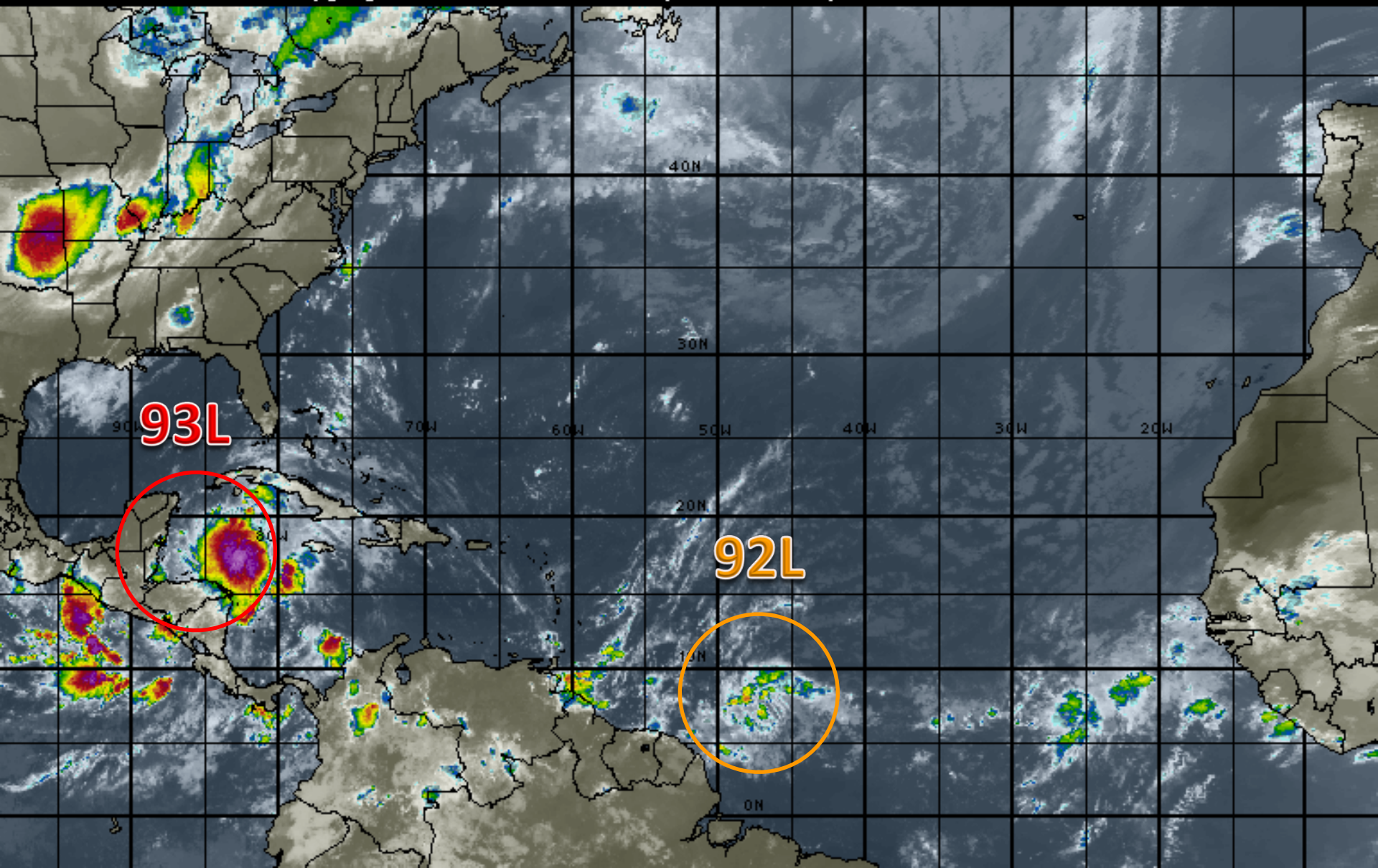
Invest Area 93L (90%) and

Invest Area 92L (50%)

This update is intended for government and emergency response officials, and is provided for informational and situational awareness purposes only. Forecast conditions are subject to change based on a variety of environmental factors. For additional information, or for any life safety concerns with an active weather event please contact your County Emergency Management or Public Safety Office, local National Weather Service forecast office or visit the National Hurricane Center website at www.nhc.noaa.gov.

Atlantic Basin Satellite Image

12:00 18-JUN-2017 GMT Copyright © 1998-2016 WSI Corporation <http://www.wsi.com>





Two-Day Graphical Tropical Weather Outlook

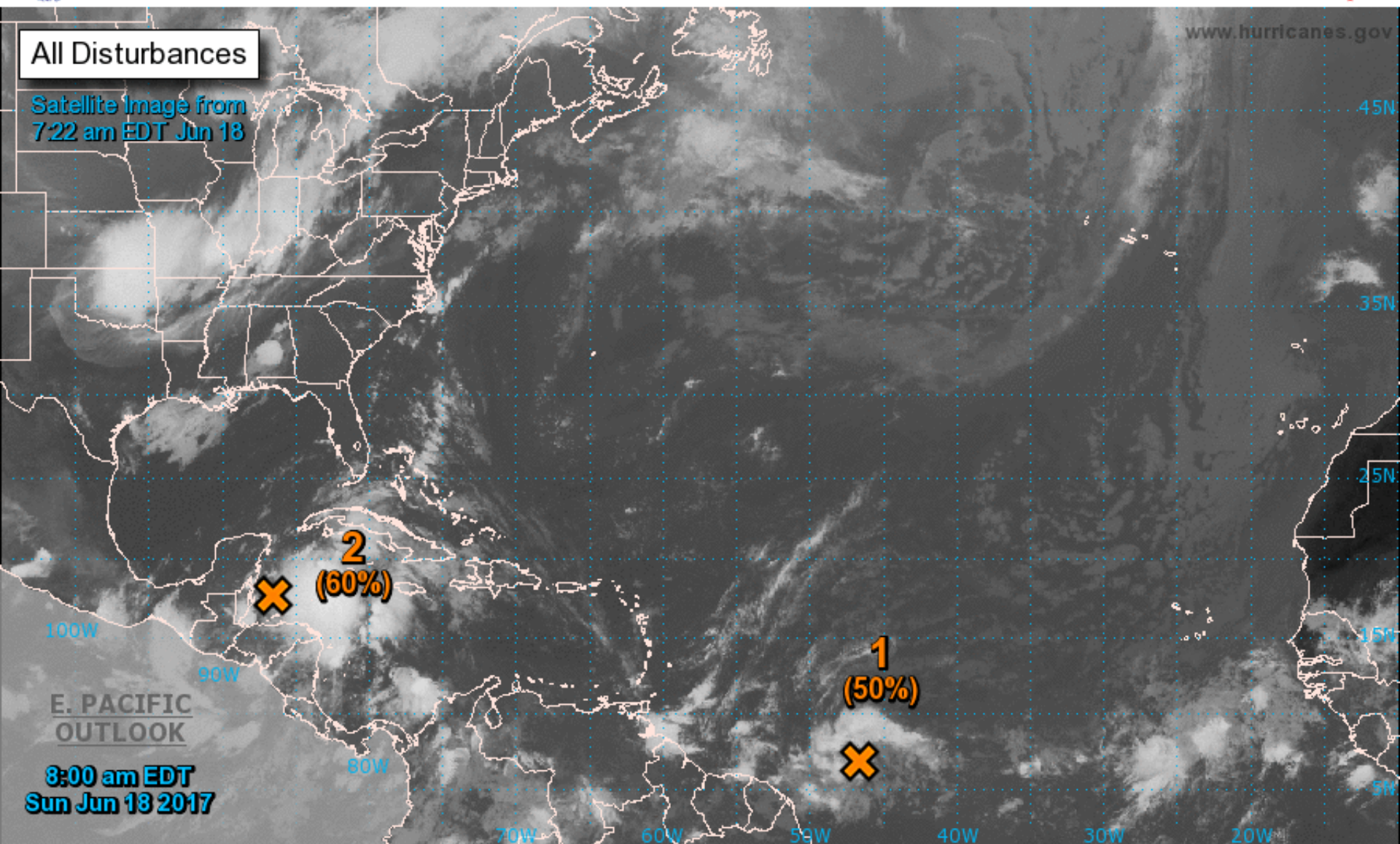
National Hurricane Center Miami, Florida



www.hurricanes.gov

All Disturbances

Satellite Image from
7:22 am EDT Jun 18



Current Disturbances and Two-Day Cyclone Formation Chance: < 40% 40-60% > 60%
Tropical or Sub-Tropical Cyclone: Depression Storm Hurricane
 Post-Tropical Cyclone Remnants



Five-Day Graphical Tropical Weather Outlook

National Hurricane Center Miami, Florida



All Disturbances

Showers and thunderstorms continue to show signs of organization in association with a tropical wave located about 1000 miles east-southeast of the southern Windward Islands. Some development of this system is possible during the next couple of days before environmental conditions become less favorable for tropical cyclone formation. This system is forecast to move to the west-northwest at near 20 mph toward the Windward Islands and northeastern South America during the next two days, and interests in these areas should monitor its progress. An Air Force Reserve Hurricane Hunter aircraft is scheduled to investigate this system on Monday, if necessary.

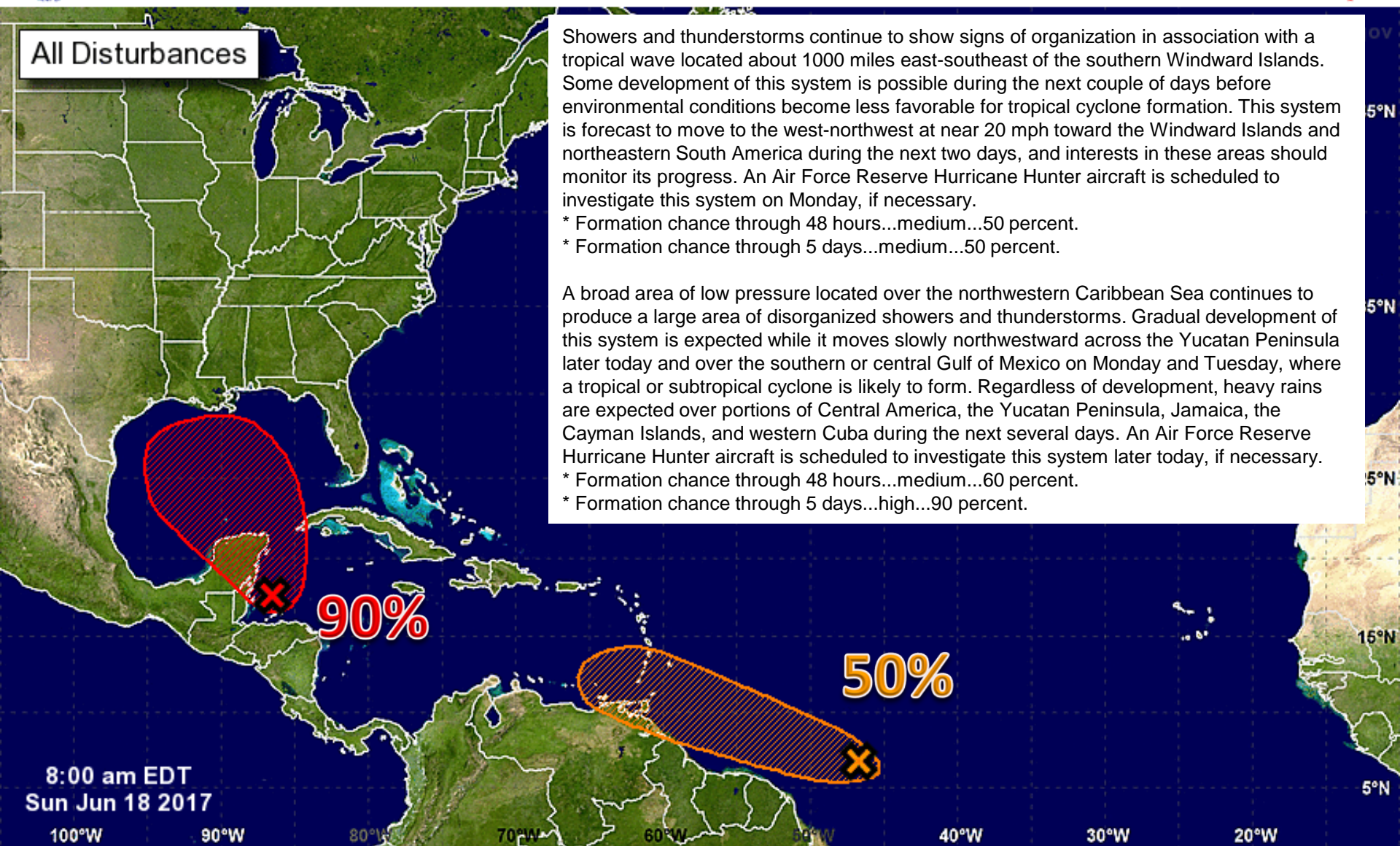
* Formation chance through 48 hours...medium...50 percent.

* Formation chance through 5 days...medium...50 percent.

A broad area of low pressure located over the northwestern Caribbean Sea continues to produce a large area of disorganized showers and thunderstorms. Gradual development of this system is expected while it moves slowly northwestward across the Yucatan Peninsula later today and over the southern or central Gulf of Mexico on Monday and Tuesday, where a tropical or subtropical cyclone is likely to form. Regardless of development, heavy rains are expected over portions of Central America, the Yucatan Peninsula, Jamaica, the Cayman Islands, and western Cuba during the next several days. An Air Force Reserve Hurricane Hunter aircraft is scheduled to investigate this system later today, if necessary.

* Formation chance through 48 hours...medium...60 percent.

* Formation chance through 5 days...high...90 percent.



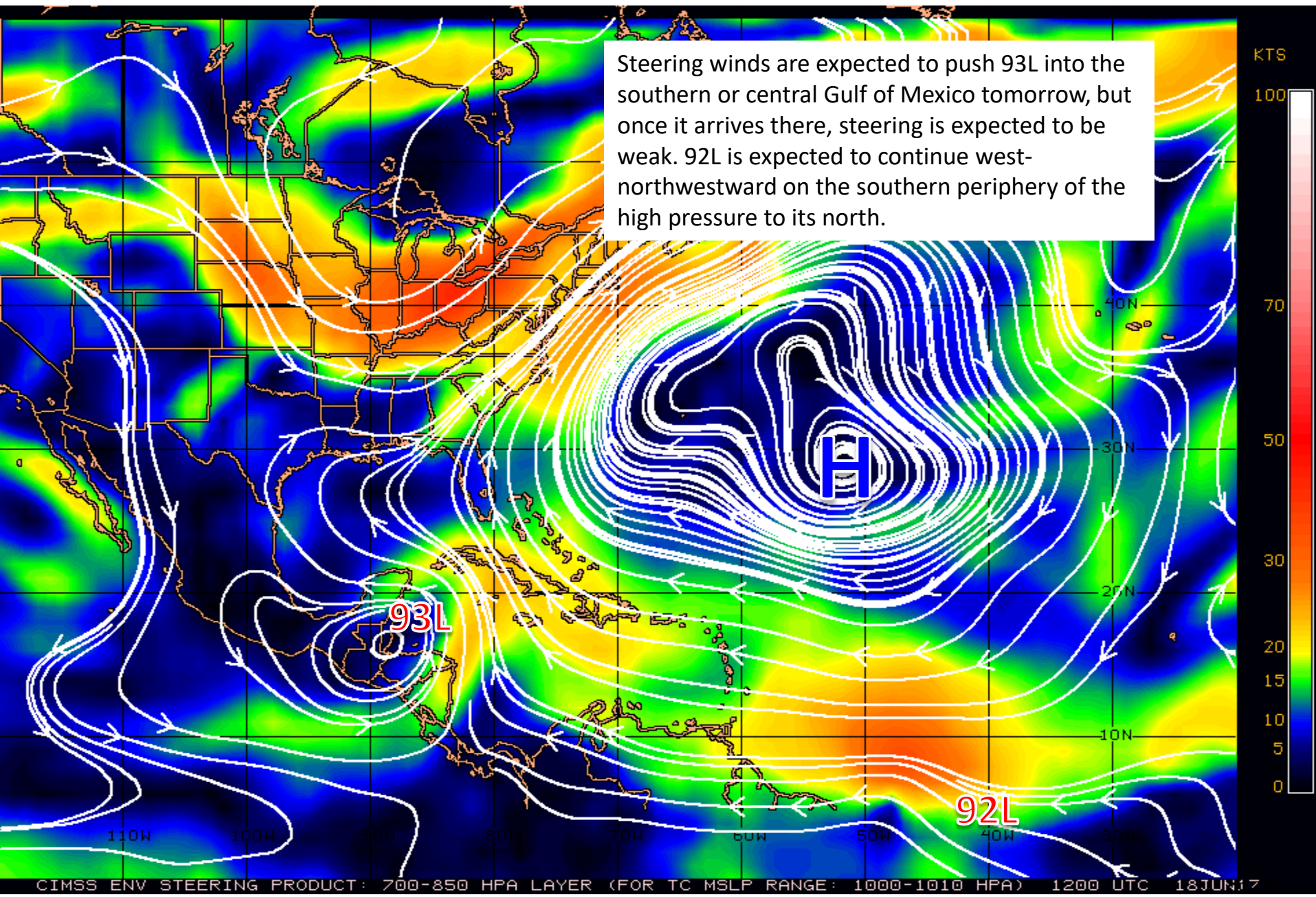
8:00 am EDT
Sun Jun 18 2017

Current Disturbances and Five-Day Cyclone Formation Chance: < 40% 40-60% > 60%

Tropical or Sub-Tropical Cyclone: Depression Storm Hurricane

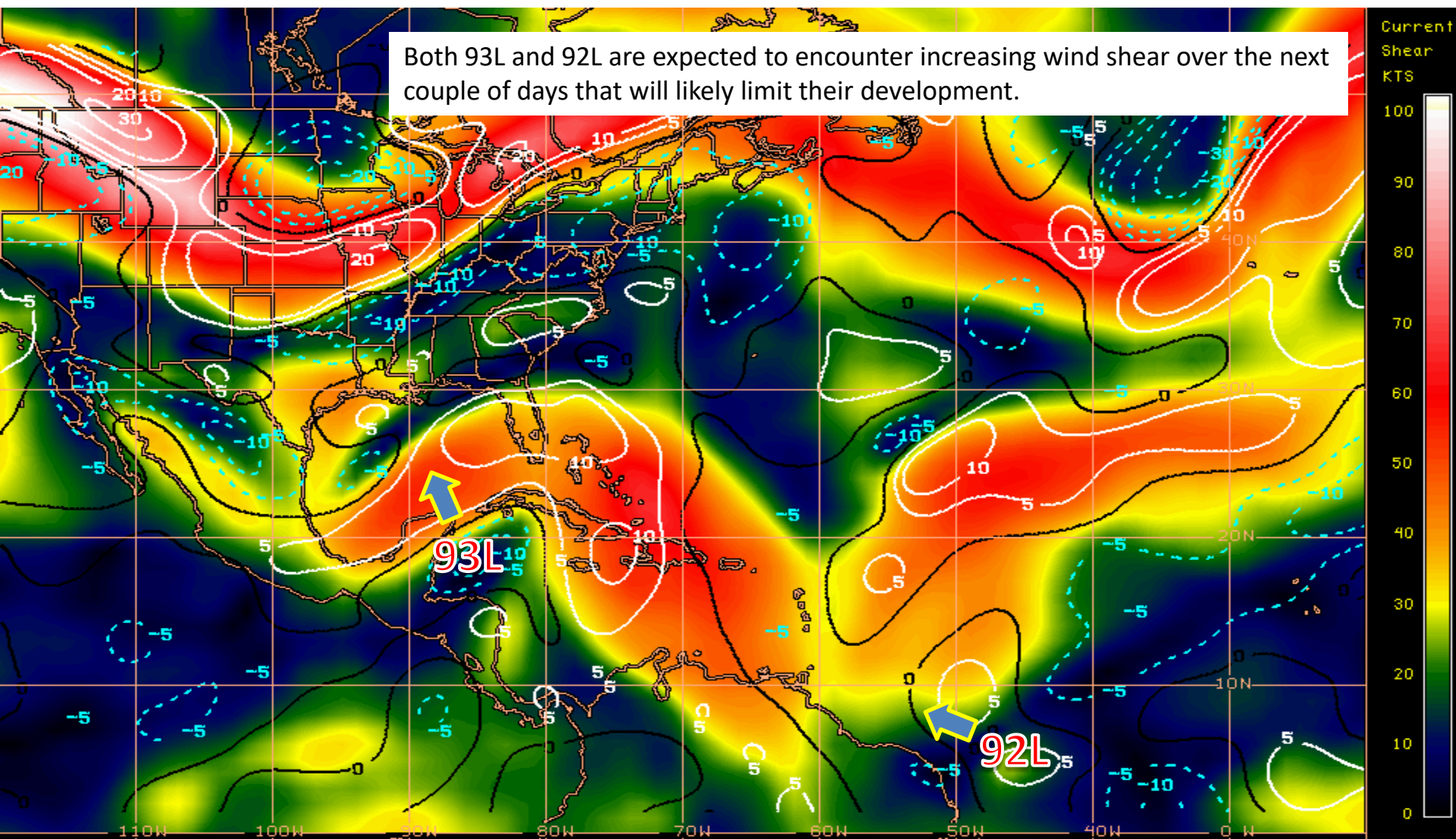
Post-Tropical Cyclone Remnants

Steering Currents



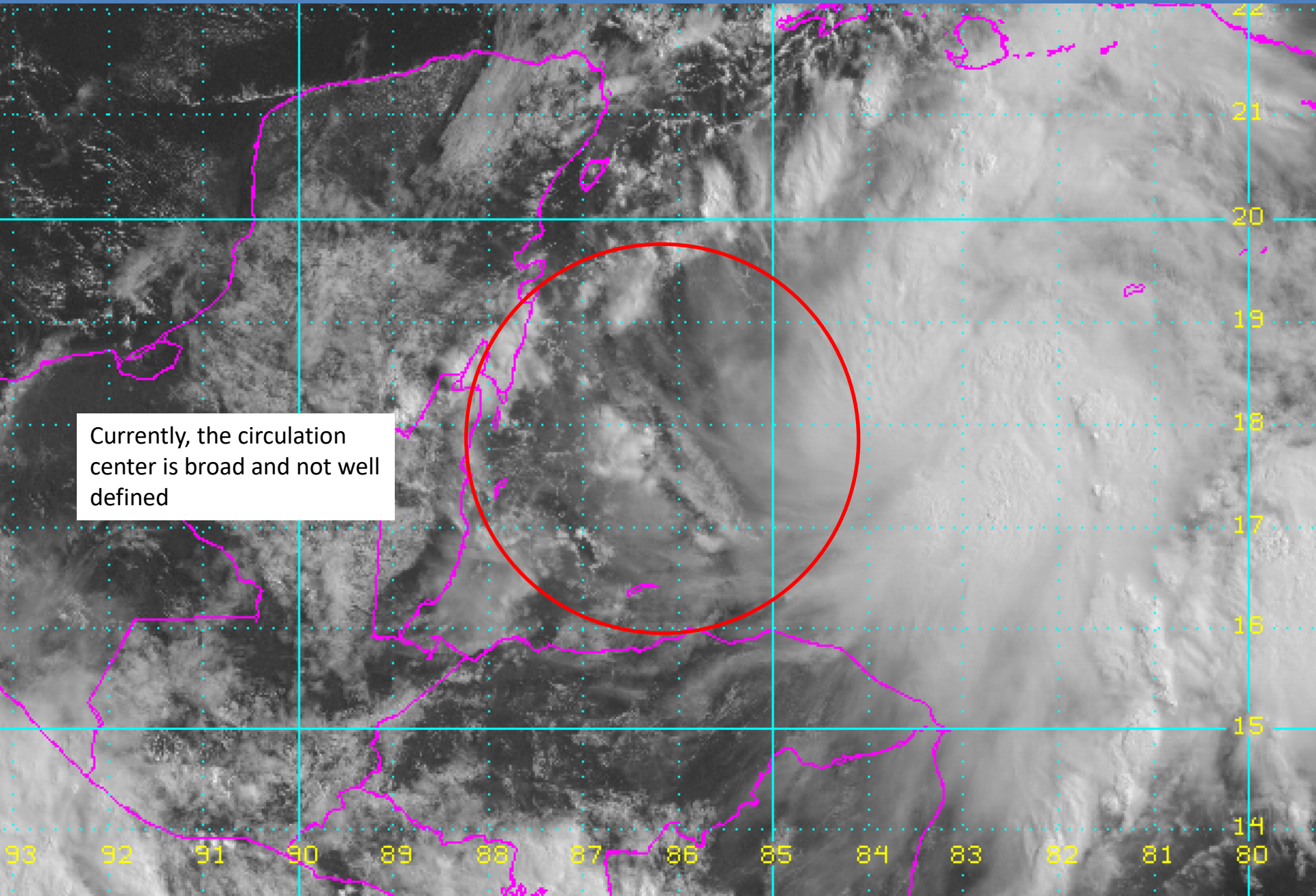
Current Wind Shear (Shaded) and Shear Tendency (Lines)

Both 93L and 92L are expected to encounter increasing wind shear over the next couple of days that will likely limit their development.



Shear Tendency (KTS) Over Past 24 Hours: Increasing — Decreasing ----

Satellite Image of Invest 93L

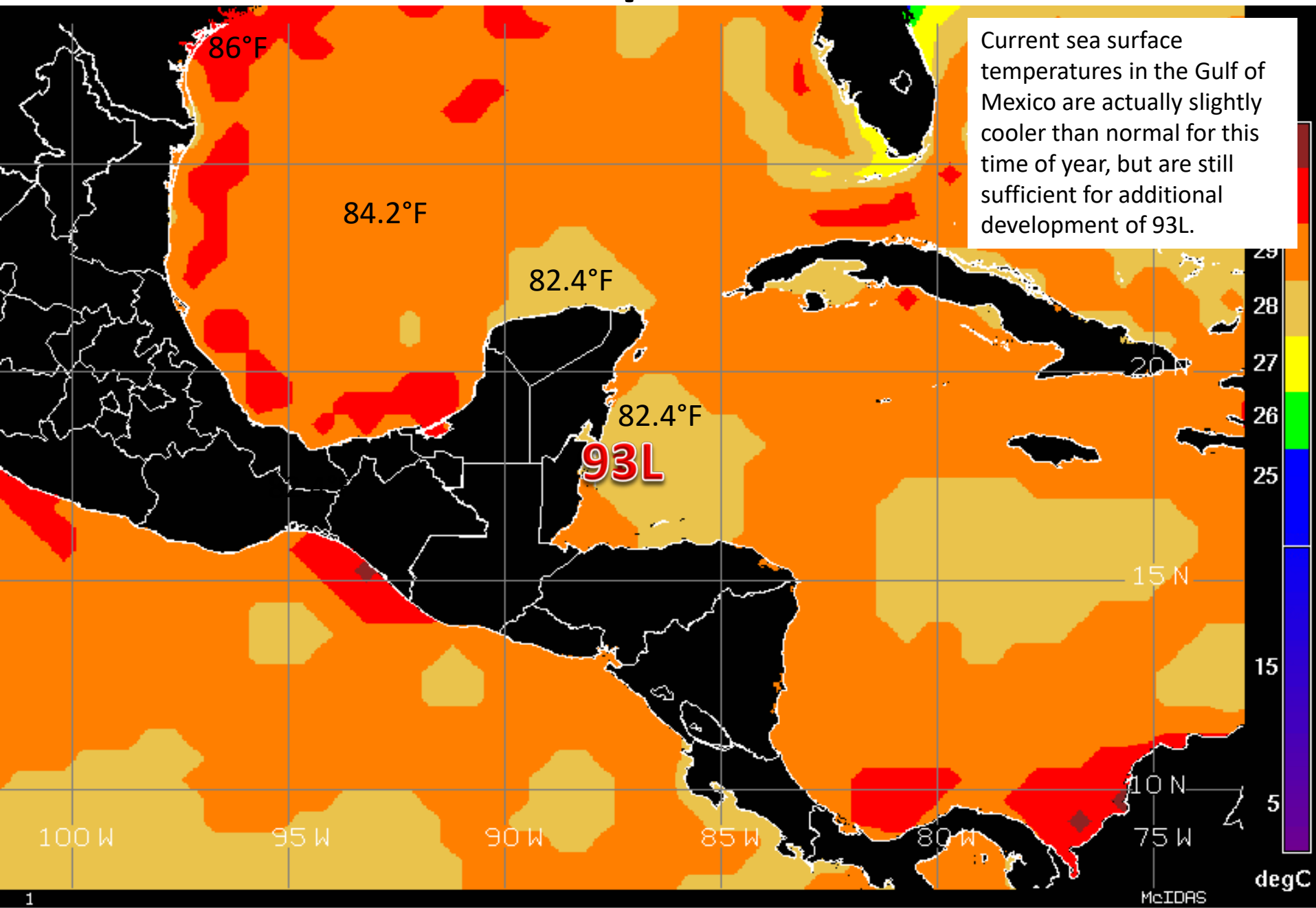


Currently, the circulation center is broad and not well defined

Initialized at 12z Jun 18 2017

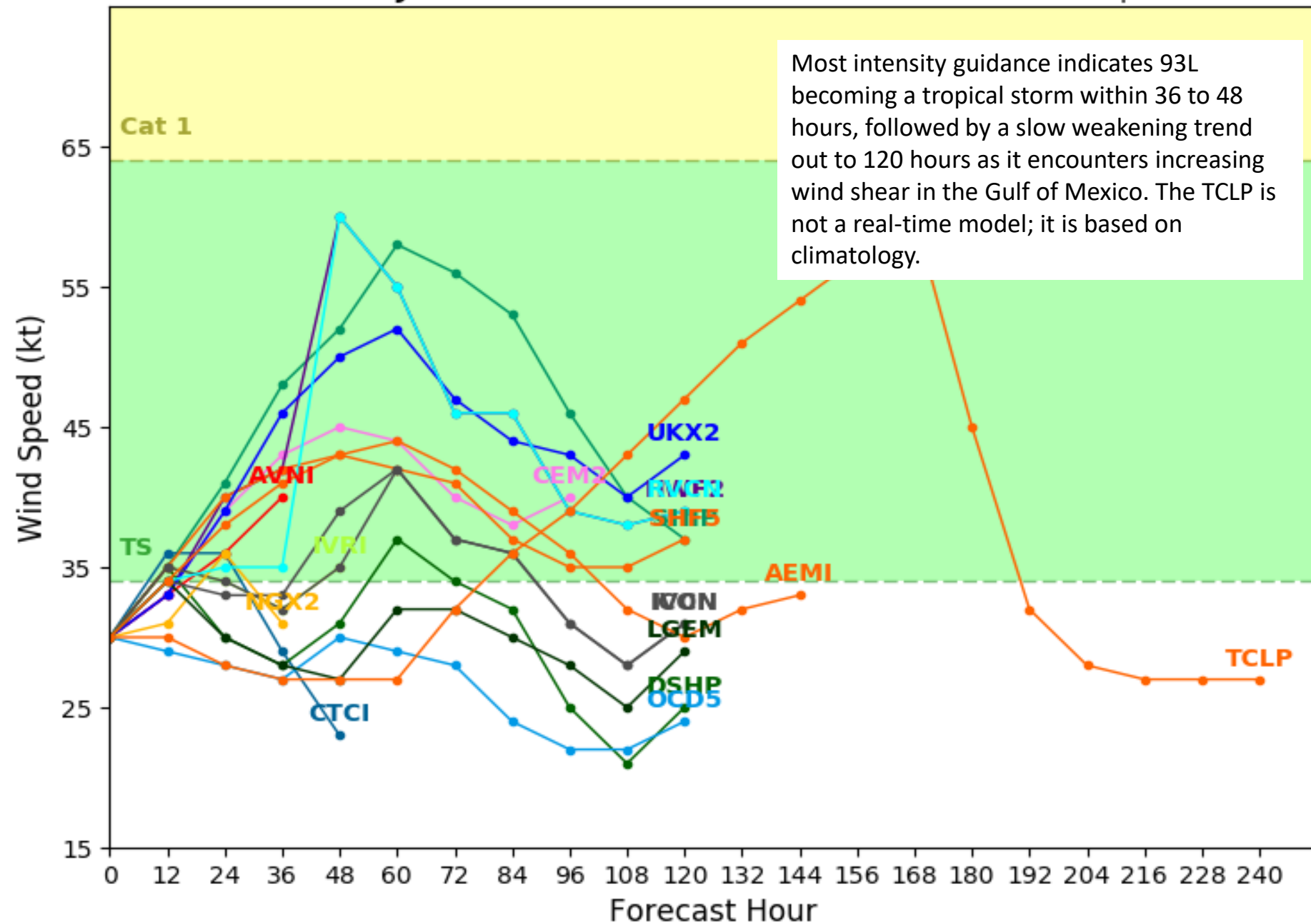
Track guidance for 93L is in good agreement within 48 hours, indicating a northerly motion into the southern Gulf of Mexico. Beyond that, there is significant uncertainty, with possibilities ranging from a northwest motion toward Texas to a northeasterly motion toward Florida.

Sea Surface Temperatures Near 93L

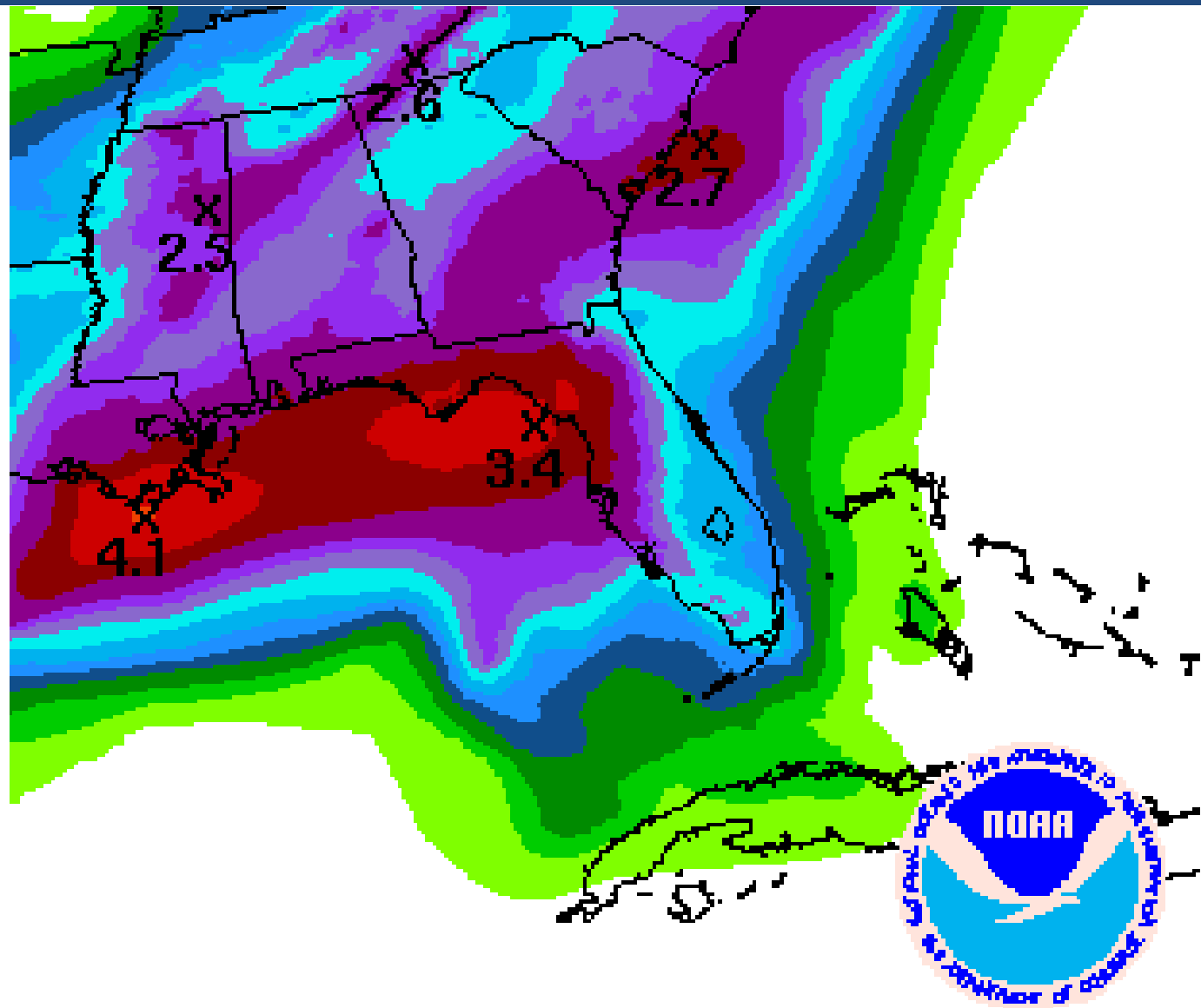
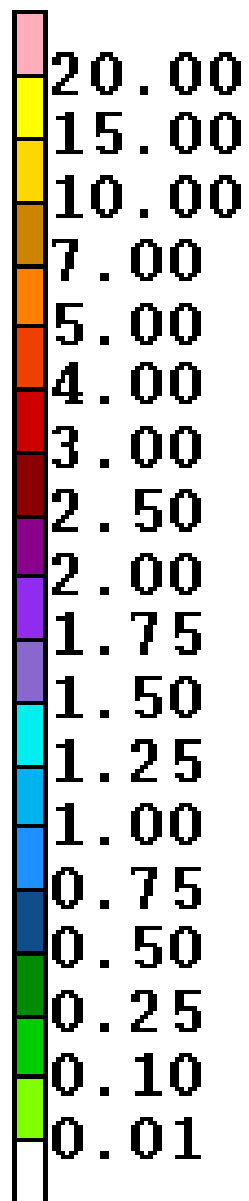


Initialized at 12z Jun 18 2017

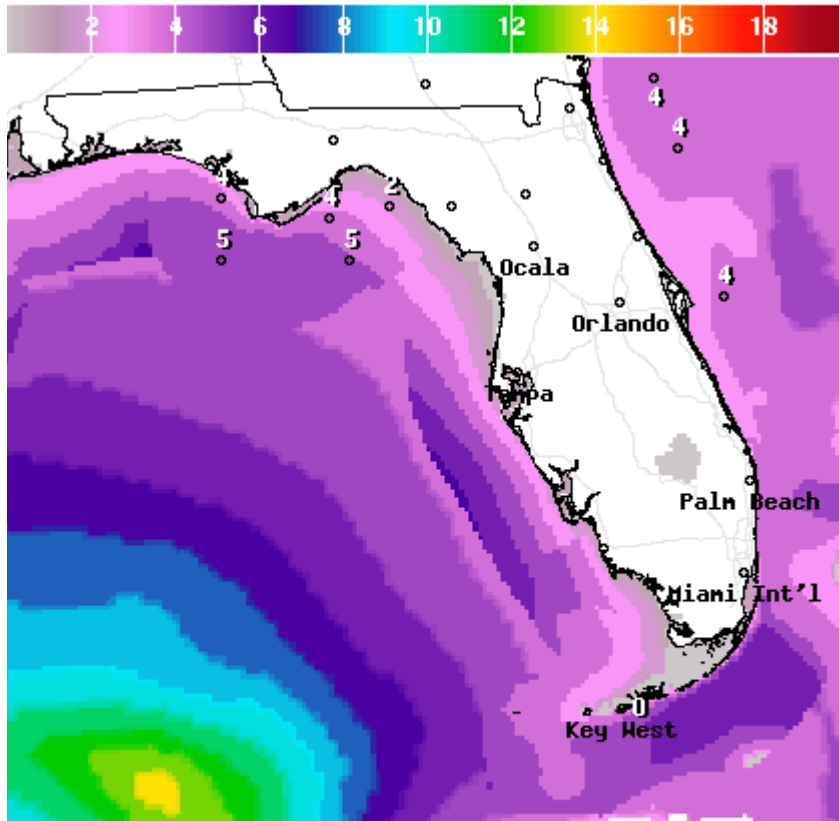
Levi Cowan - tropicaltidbits.com



Forecast Total Rainfall Accumulations (Today Through Friday Morning)



Forecast Wave Heights



Wave Height(ft) Ending Mon Jun 19 2017 8PM EDT
(Tue Jun 20 2017 00Z)

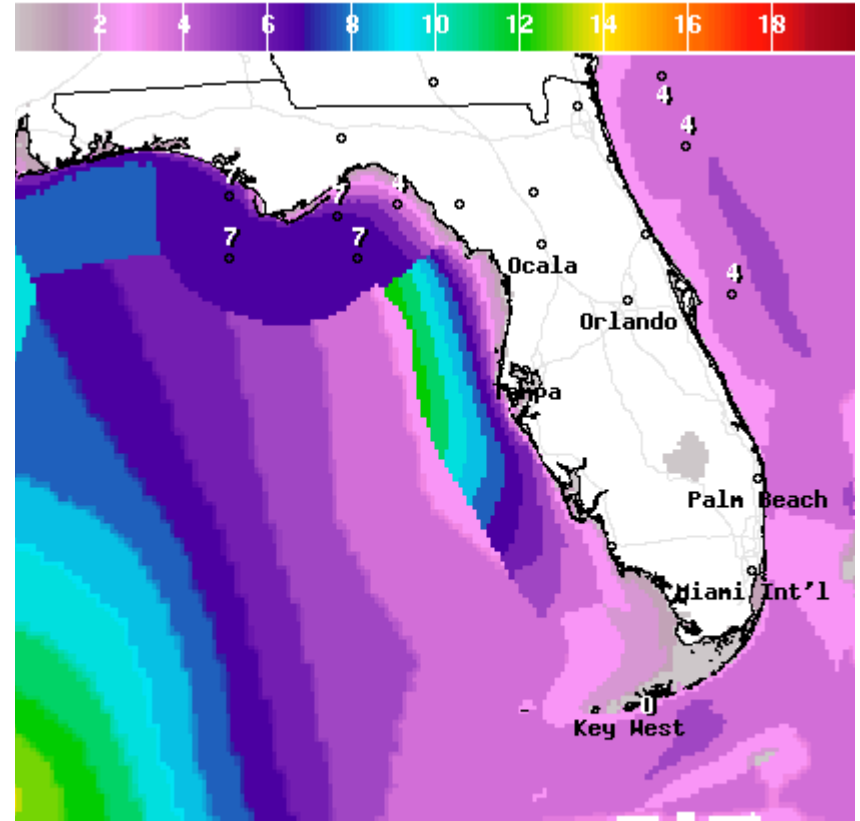


National Digital Forecast Database

14z issuance Graphic created-Jun 18 10:33AM EDT



Monday



Wave Height(ft) Ending Tue Jun 20 2017 8PM EDT
(Wed Jun 21 2017 00Z)



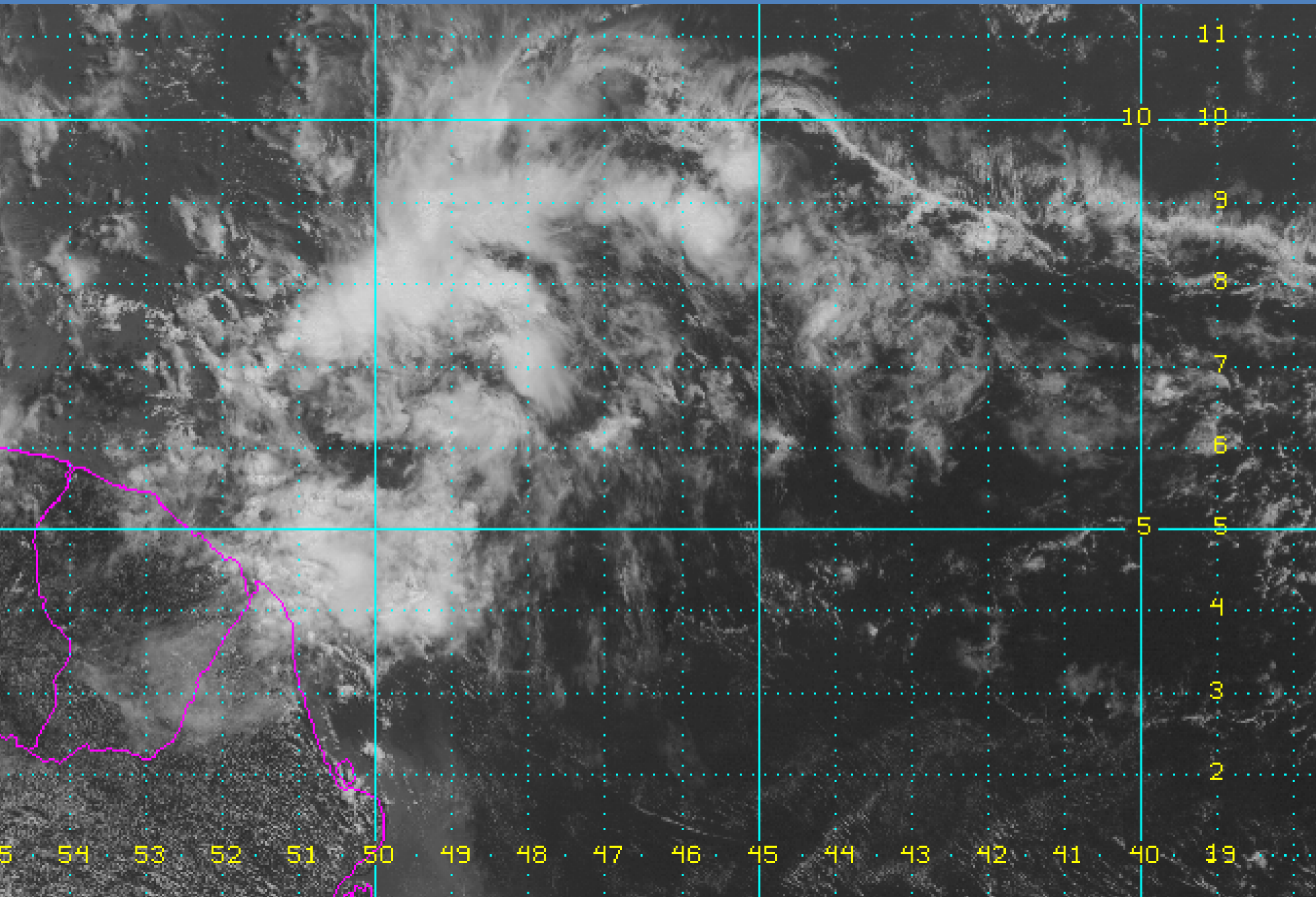
National Digital Forecast Database

14z issuance Graphic created-Jun 18 10:33AM EDT



Tuesday

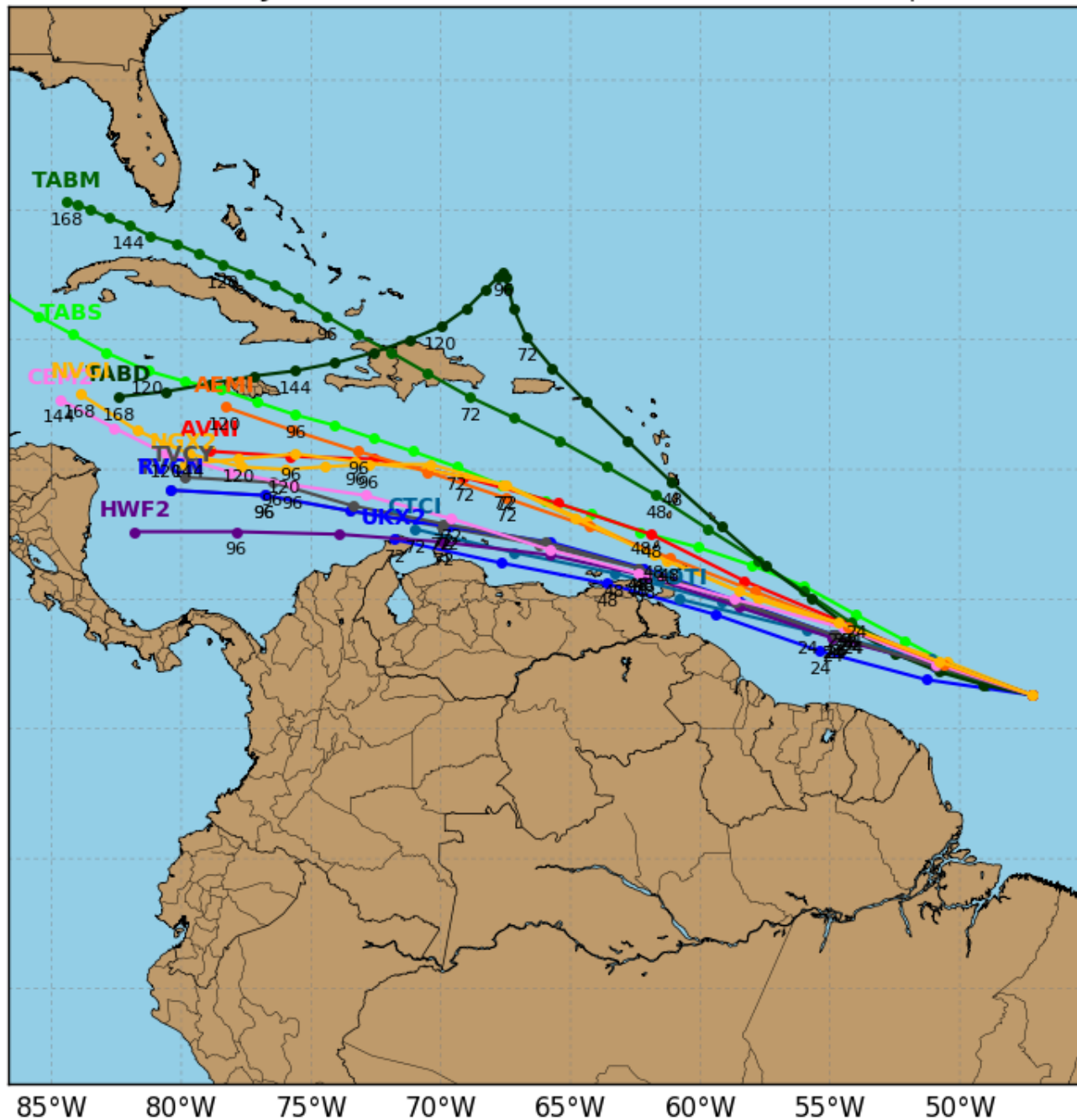
Satellite Image of 92L



Invest 92L Model Track Guidance

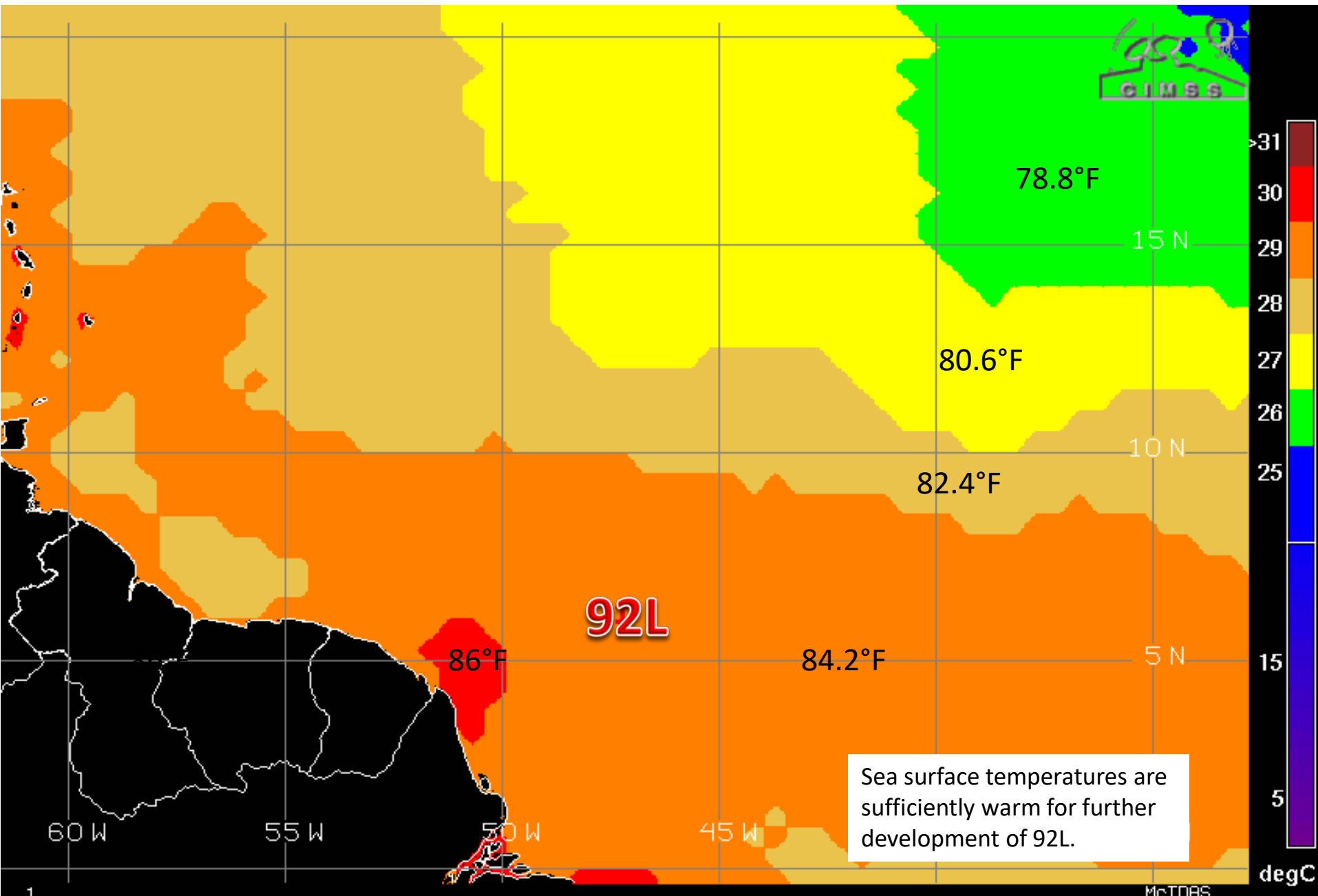
Initialized at 12z Jun 18 2017

Levi Cowan - tropicaltidbits.com

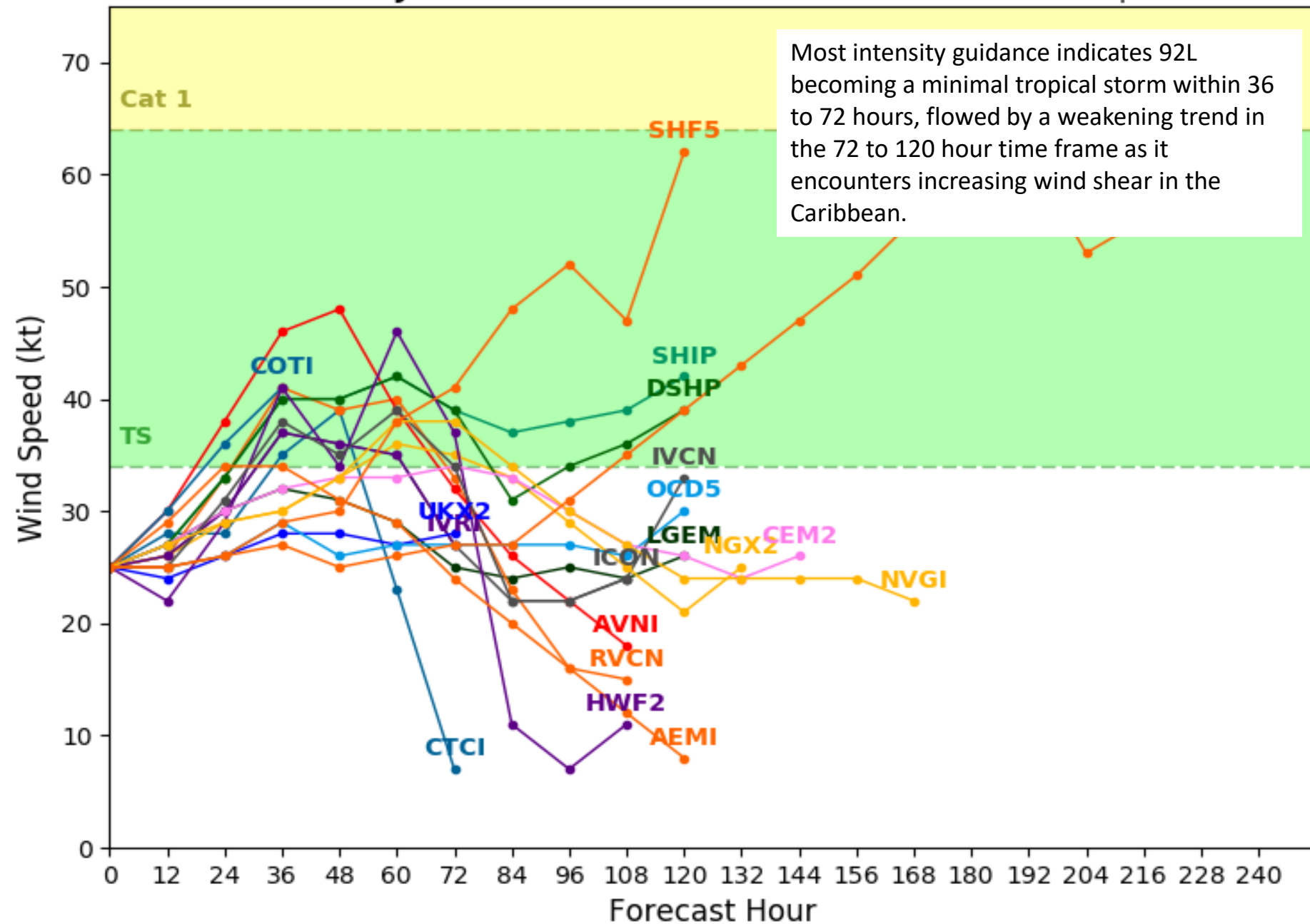


Track guidance for 92L indicates a continued west-northwesterly motion over the next 48 hours, taking it through the Windward Islands and into the southeastern Caribbean Sea. The guidance diverges beyond that time frame, from taking 92L across the southern Caribbean toward Central America to taking a more northwesterly direction toward Jamaica or Hispaniola.

Sea Surface Temperatures Near 92L



Levi Cowan - tropicaltidbits.com



Summary:

- A broad area of low pressure, designated Invest Area 93L, continues to produce disorganized showers and thunderstorms over the northwestern Caribbean Sea this morning. Gradual development is expected as it moves across the Yucatan Peninsula today and into the southern or central Gulf of Mexico tomorrow and Tuesday, where it is likely to become a tropical or subtropical cyclone.
- The National Hurricane Center has given 93L a 60% (medium) chance of development over the next 48 hours and a 90% (high) chance of development over the next five days.
- Track guidance is split on 93L's future track once it enters the southern Gulf of Mexico tomorrow, as the possibilities range from a northwesterly track toward Texas to a northeasterly track toward Florida. The global computer models also remain split, as they have for the past few days. In general, lack of model consensus for developing or weak tropical systems is typical until a well-defined circulation center is present.
- There is better consensus on 93L's future intensity as most guidance indicates 93L becoming a tropical storm within 48 hours, followed by a slow weakening trend as it encounters increasing wind shear and interacts with land.
- A Hurricane Hunter reconnaissance aircraft is scheduled to investigate 93L this afternoon.
- A tropical wave located about 1000 miles east-southeast of the southern Windward Islands, designated Invest Area 92L, continues to show signs of organization.
- It has been given a 50% (medium) chance of development over the next 48 hours and over the next five days as it moves west-northwestward toward the Windward Islands and northeastern South America.
- Track guidance indicates a continued west-northwesterly movement over the next 48 hours toward the southeastern Caribbean Sea, but there is little consensus beyond 48 hours other than continued movement through the central Caribbean. Intensity guidance indicates 92L could become a tropical storm within two or three days before a weakening trend begins as it encounters increasing shear in the Caribbean.
- A Hurricane Hunter reconnaissance aircraft is scheduled to investigate 92L tomorrow.
- The next names on the 2017 Atlantic storm list are Bret and Cindy.
- No other tropical cyclone activity is currently expected over the next five days.

Florida Outlook:

- There continues to be significant uncertainty regarding Invest Area 93L, therefore it should be monitored closely over the next couple of days.
- Regardless of development and track, moisture associated with 93L is expected to increase rain chances, and the possibility for locally heavy rainfall, in Florida in the middle part of this week. With grounds already saturated from the plentiful rainfall this month, flooding could become an issue later this week.
- Increased wave heights and an elevated risk for rip currents are also possible along the Panhandle and Gulf coasts beginning tomorrow through the middle part of this week.
- 92L is unlikely to have any impact on Florida, at least within the next 5 to 7 days.

Another briefing packet will be issued Monday morning or if either system becomes a tropical cyclone. For more information, visit the NHC website at www.hurricanes.gov.



TROPICAL UPDATE

Created by:

William Watson, Assistant State Meteorologist
william.watson@em.myflorida.com

State Meteorological Support Unit

Florida Division of Emergency Management

Users wishing to subscribe (approval pending) to this distribution list, register at
https://public.govdelivery.com/accounts/FLDEM/subscriber/new?topic_id=SERT_Met_Tropics.
Other reports available for subscription are available at
<https://public.govdelivery.com/accounts/FLDEM/subscriber/new?preferences=true>