



# **TROPICAL UPDATE**

**12 PM EDT**

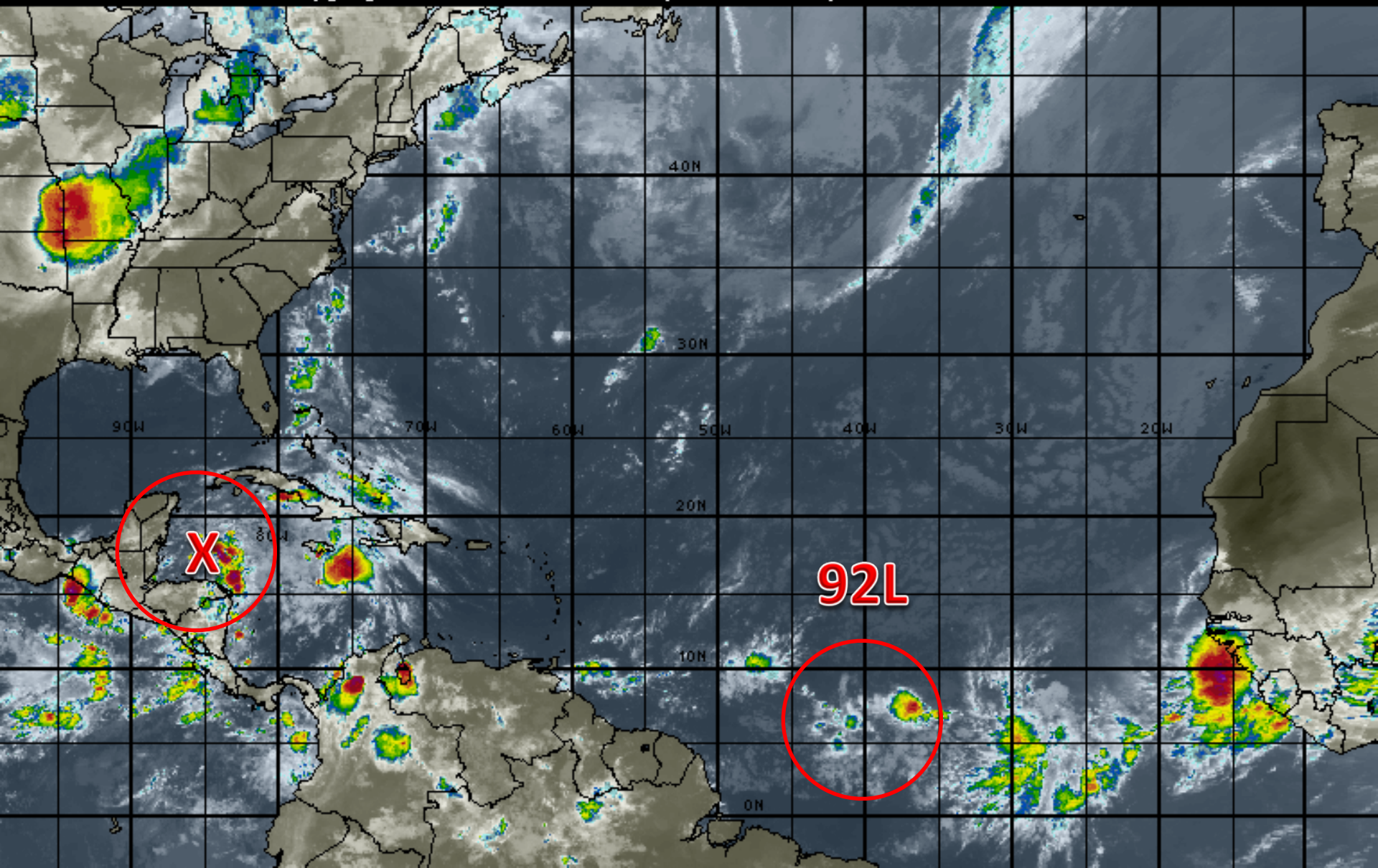
**Saturday, June 17, 2017**

**Caribbean/Gulf Disturbance (70%) and  
Invest Area 92L (70%)**

**This update is intended for government and emergency response officials, and is provided for informational and situational awareness purposes only. Forecast conditions are subject to change based on a variety of environmental factors. For additional information, or for any life safety concerns with an active weather event please contact your County Emergency Management or Public Safety Office, local National Weather Service forecast office or visit the National Hurricane Center website at [www.nhc.noaa.gov](http://www.nhc.noaa.gov).**

# Atlantic Basin Satellite Image

12:00 17-JUN-2017 GMT Copyright © 1998-2016 WSI Corporation <http://www.wsi.com>







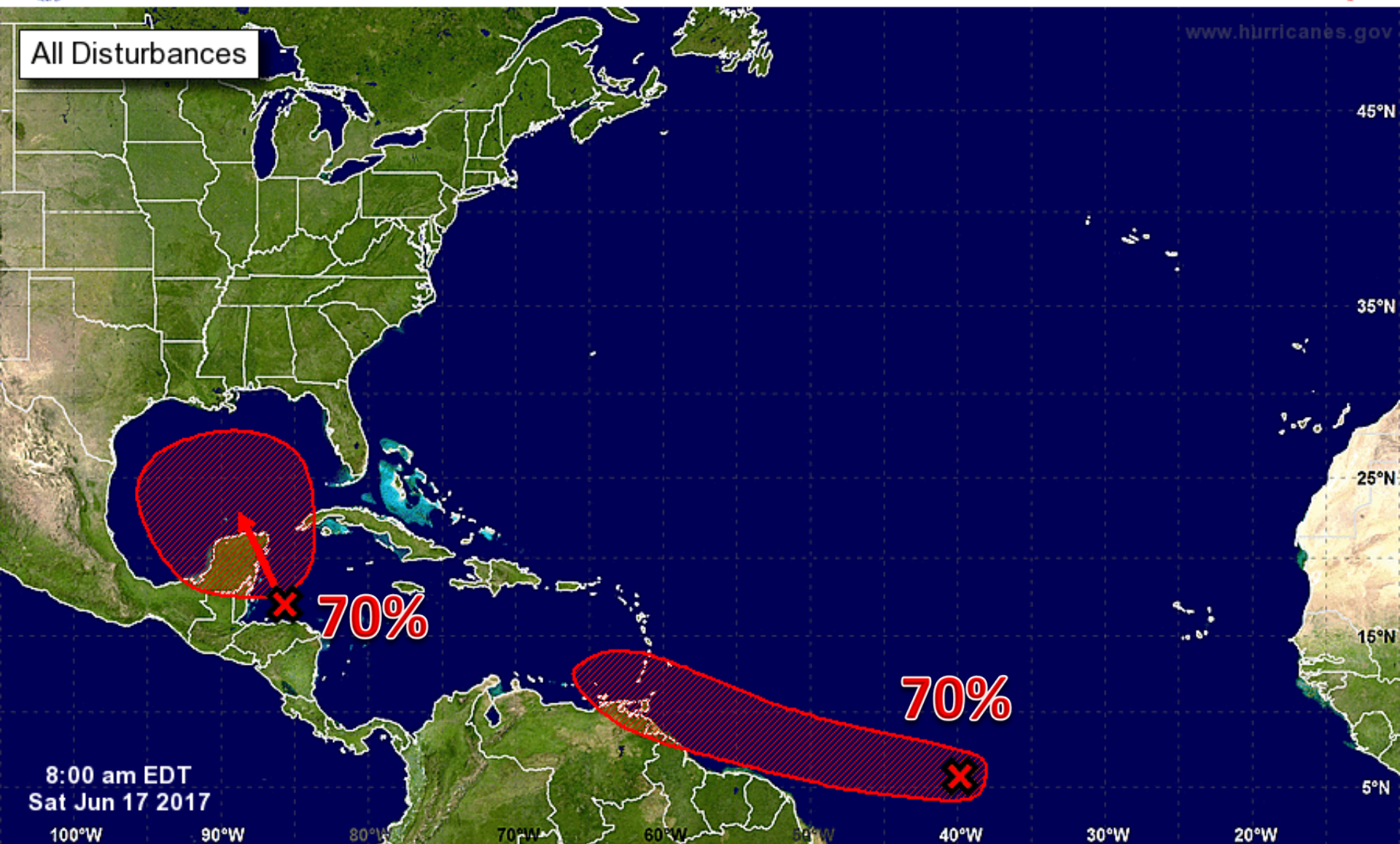
# Five-Day Graphical Tropical Weather Outlook

National Hurricane Center Miami, Florida



[www.hurricanes.gov](http://www.hurricanes.gov)

All Disturbances



Current Disturbances and Five-Day Cyclone Formation Chance: < 40% 40-60% > 60%

Tropical or Sub-Tropical Cyclone: Depression Storm Hurricane

Post-Tropical Cyclone Remnants



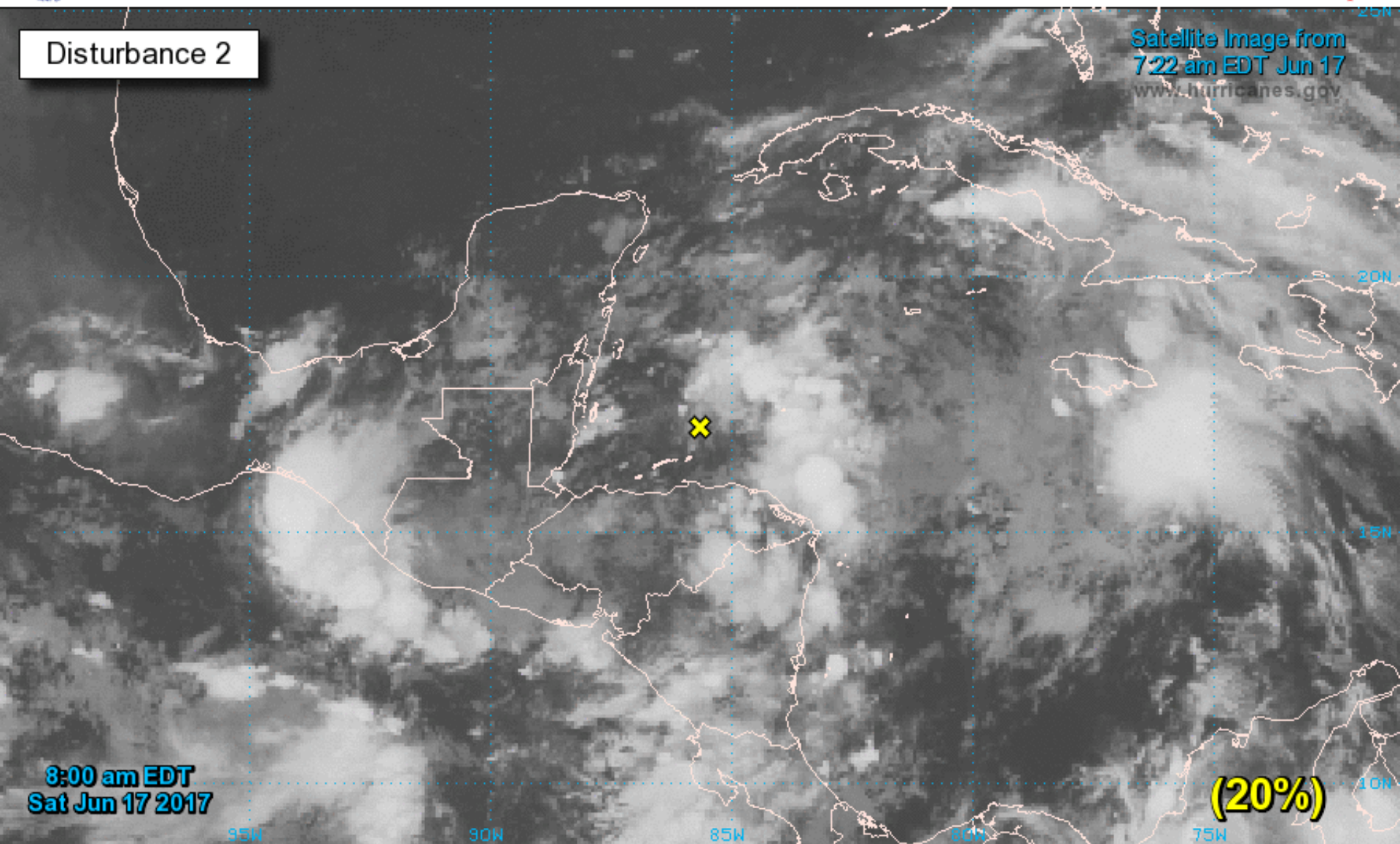
# Two-Day Graphical Tropical Weather Outlook

National Hurricane Center Miami, Florida



Disturbance 2

Satellite Image from  
722 am EDT Jun 17  
[www.hurricanes.gov](http://www.hurricanes.gov)



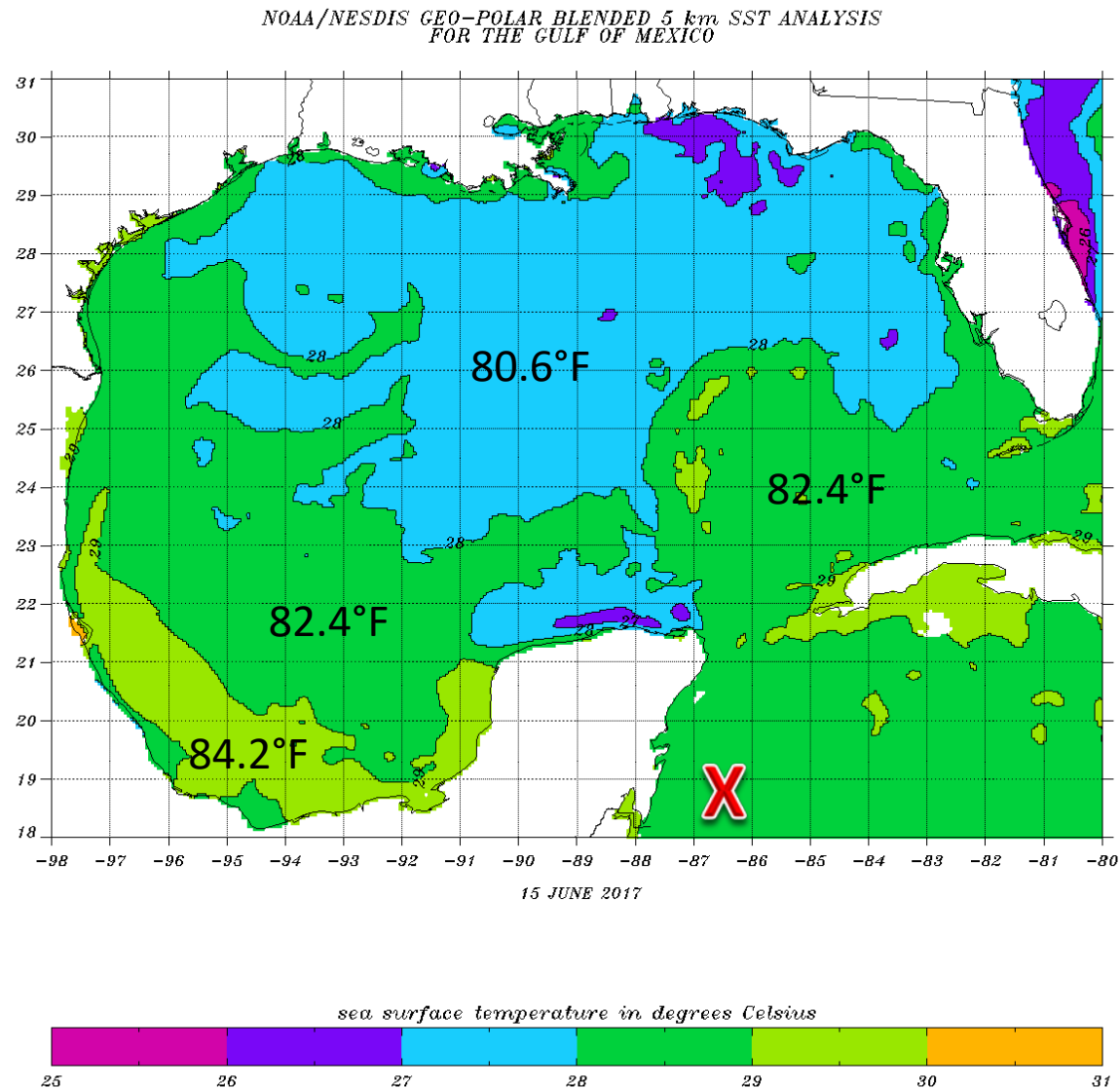
Current Disturbances and Two-Day Cyclone Formation Chance: < 40% 40-60% > 60%

Tropical or Sub-Tropical Cyclone: Depression Storm Hurricane

Post-Tropical Cyclone Remnants

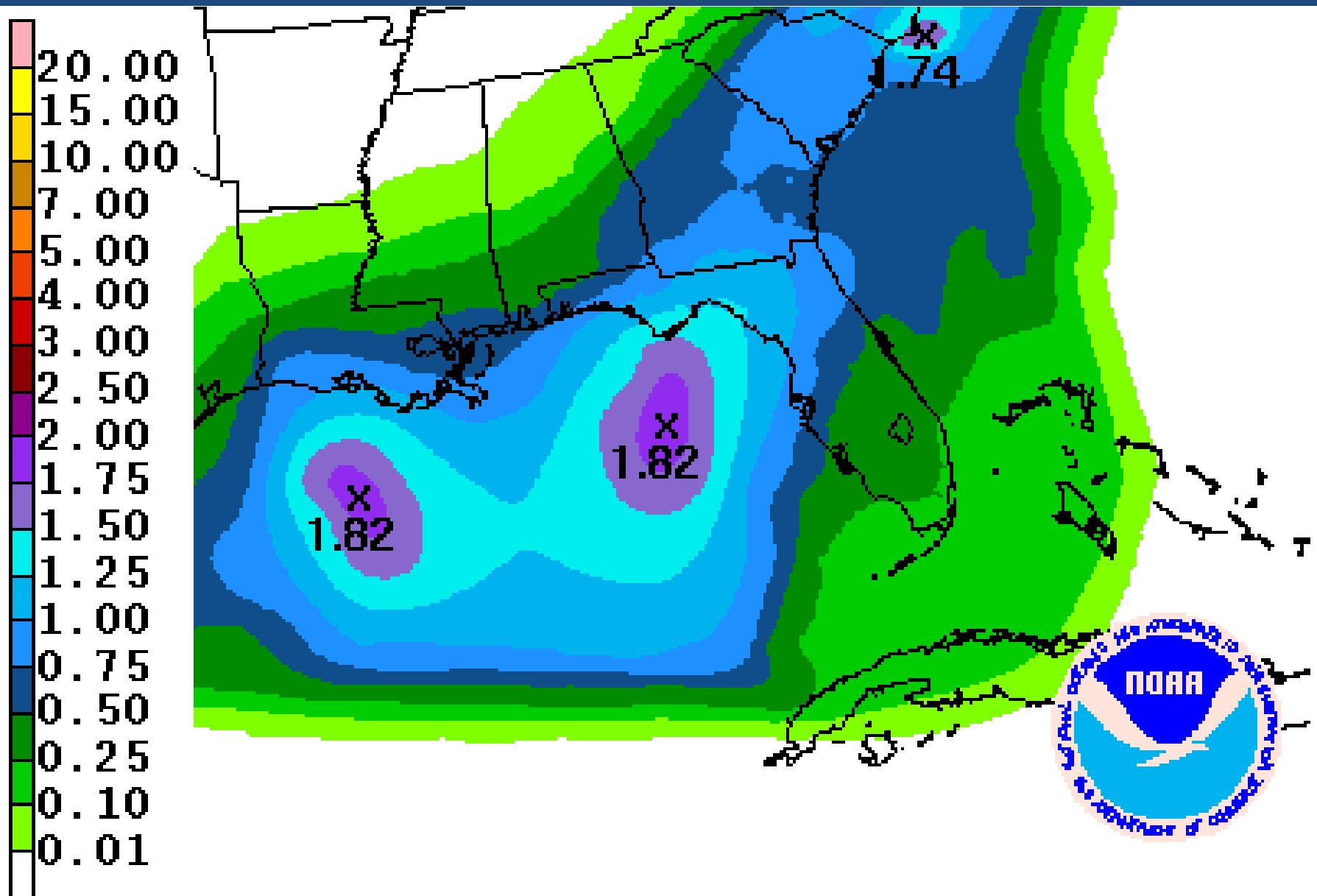


# Sea Surface Temperatures in the Gulf of Mexico

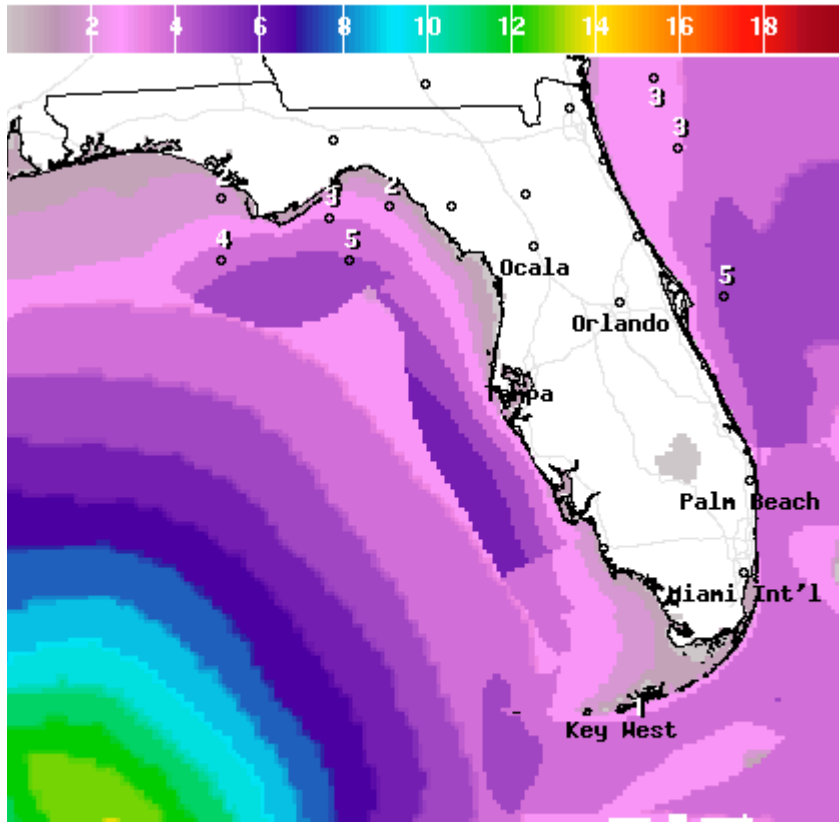


Current sea surface temperatures in the Gulf of Mexico are actually slightly cooler than normal for this time of year and will be a contributing factor to the slow, rather than rapid, development of the system.

# *Forecast Total Rainfall Accumulations (Tuesday Through Thursday)*



# Forecast Wave Heights



Wave Height(ft) Ending Mon Jun 19 2017 2PM EDT

(Mon Jun 19 2017 18Z)



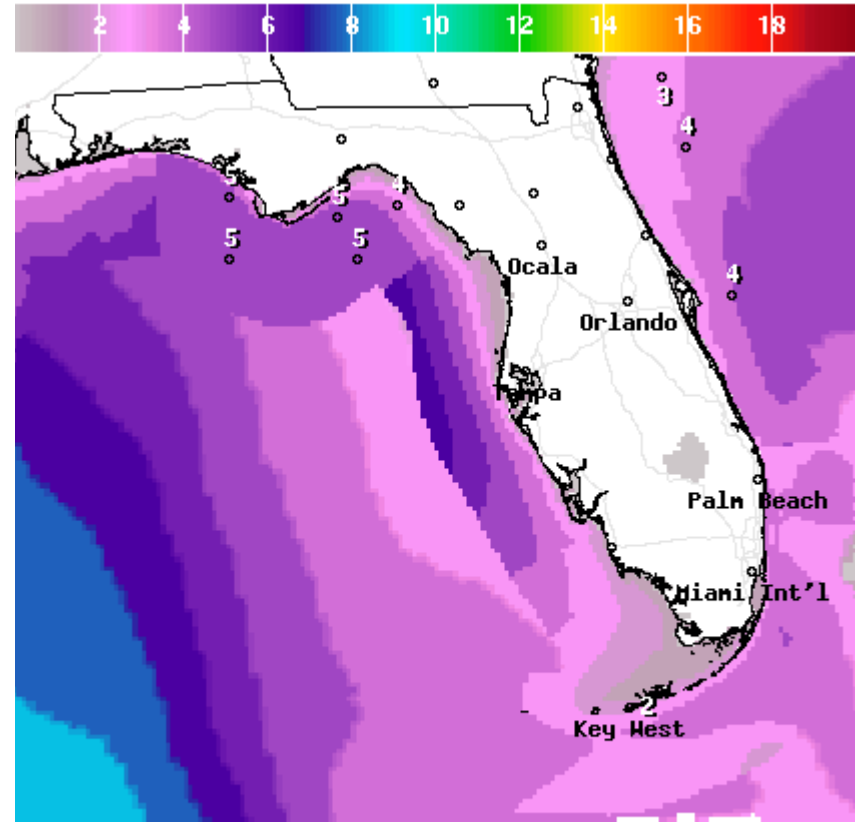
**National Digital Forecast Database**

13z issuance

Graphic created-Jun 17 9:33AM EDT



Monday



Wave Height(ft) Ending Tue Jun 20 2017 2PM EDT

(Tue Jun 20 2017 18Z)



**National Digital Forecast Database**

12z issuance

Graphic created-Jun 17 8:48AM EDT



Tuesday



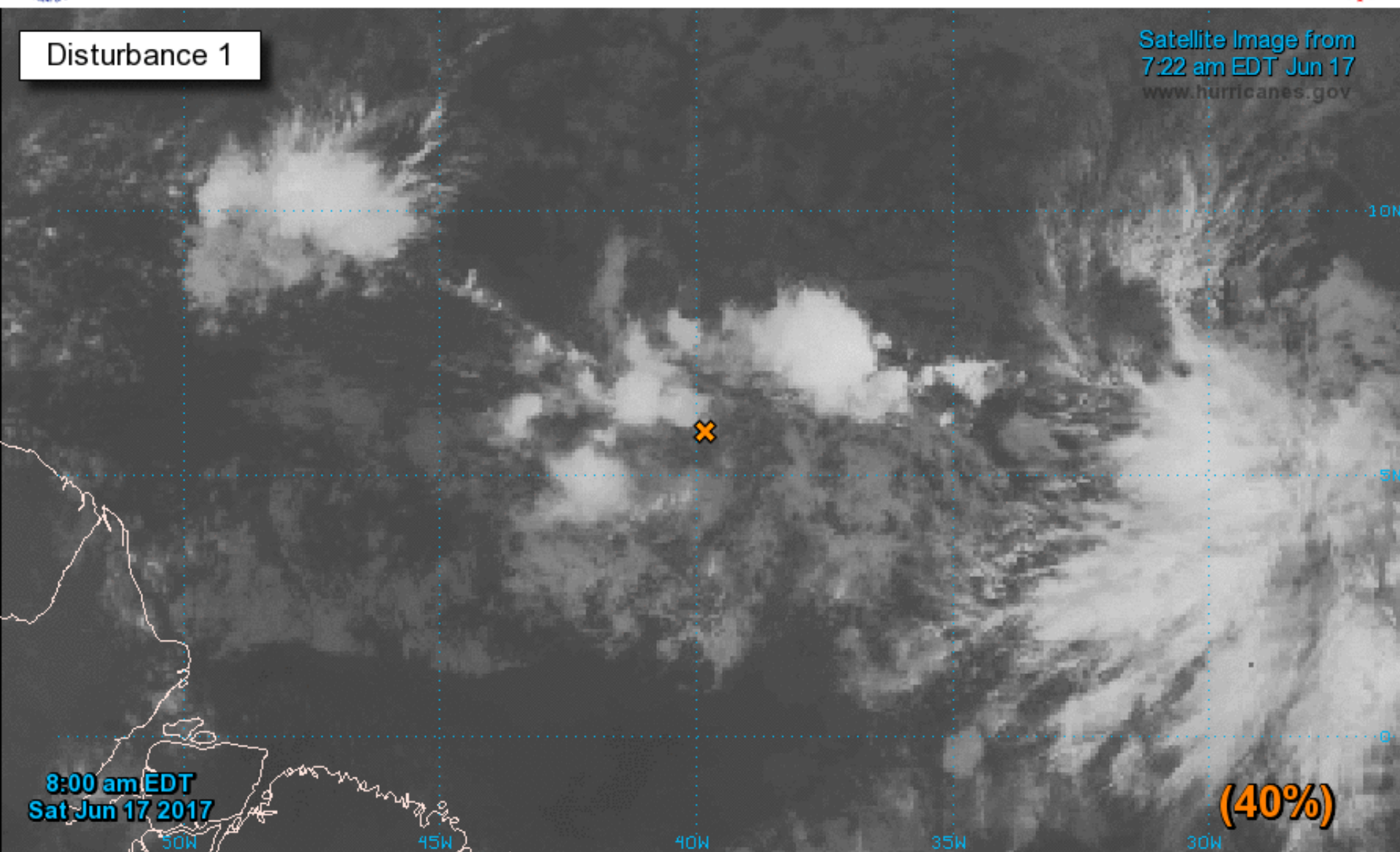
# Two-Day Graphical Tropical Weather Outlook

National Hurricane Center Miami, Florida



Disturbance 1

Satellite Image from  
7:22 am EDT Jun 17  
[www.hurricanes.gov](http://www.hurricanes.gov)



Current Disturbances and Two-Day Cyclone Formation Chance: ✕ < 40% ✕ 40-60% ✕ > 60%

Tropical or Sub-Tropical Cyclone: ○ Depression 🌀 Storm 🌀 Hurricane

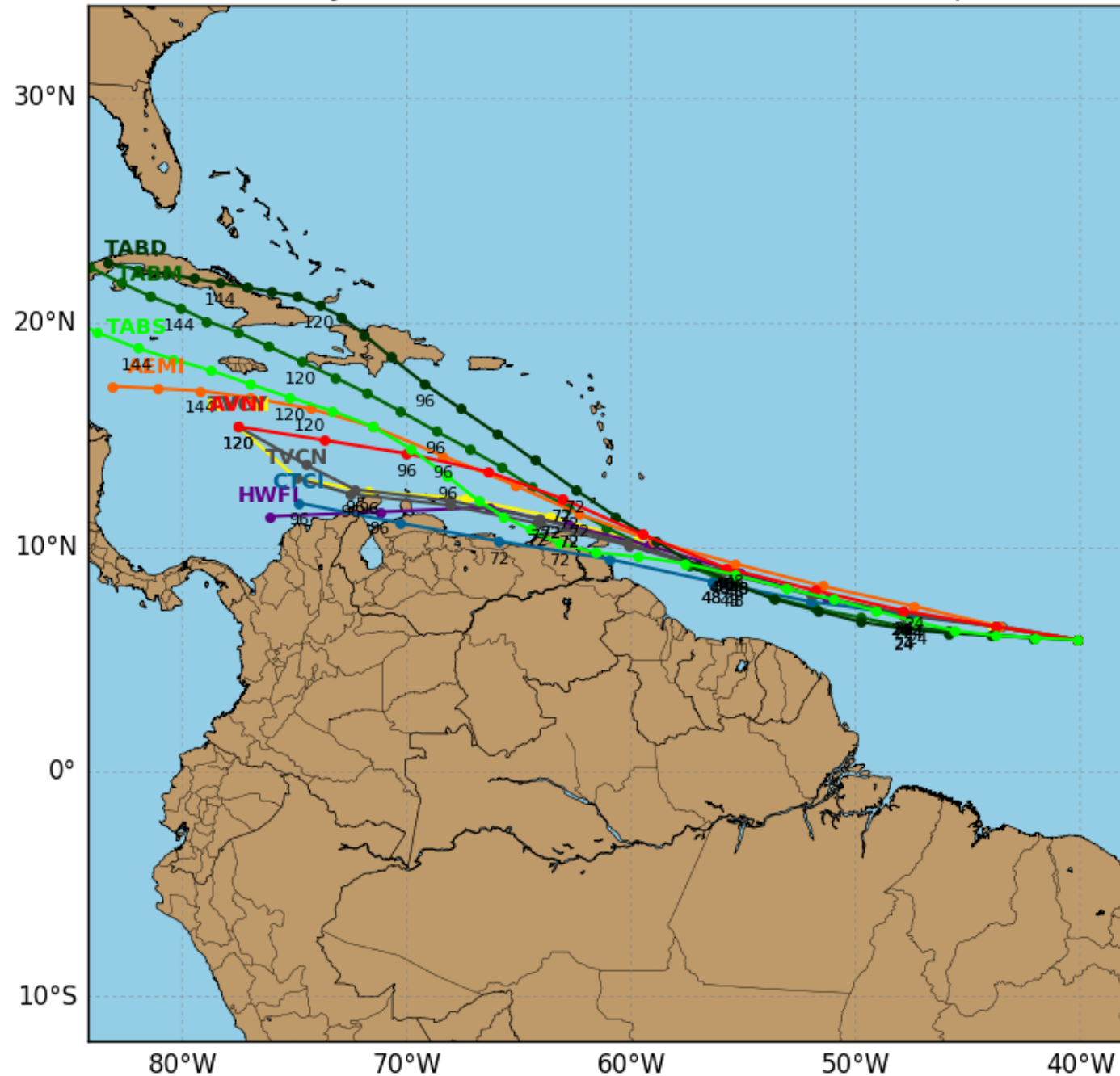
⊗ Post-Tropical Cyclone ✕ Remnants



# Invest 92L Model Track Guidance

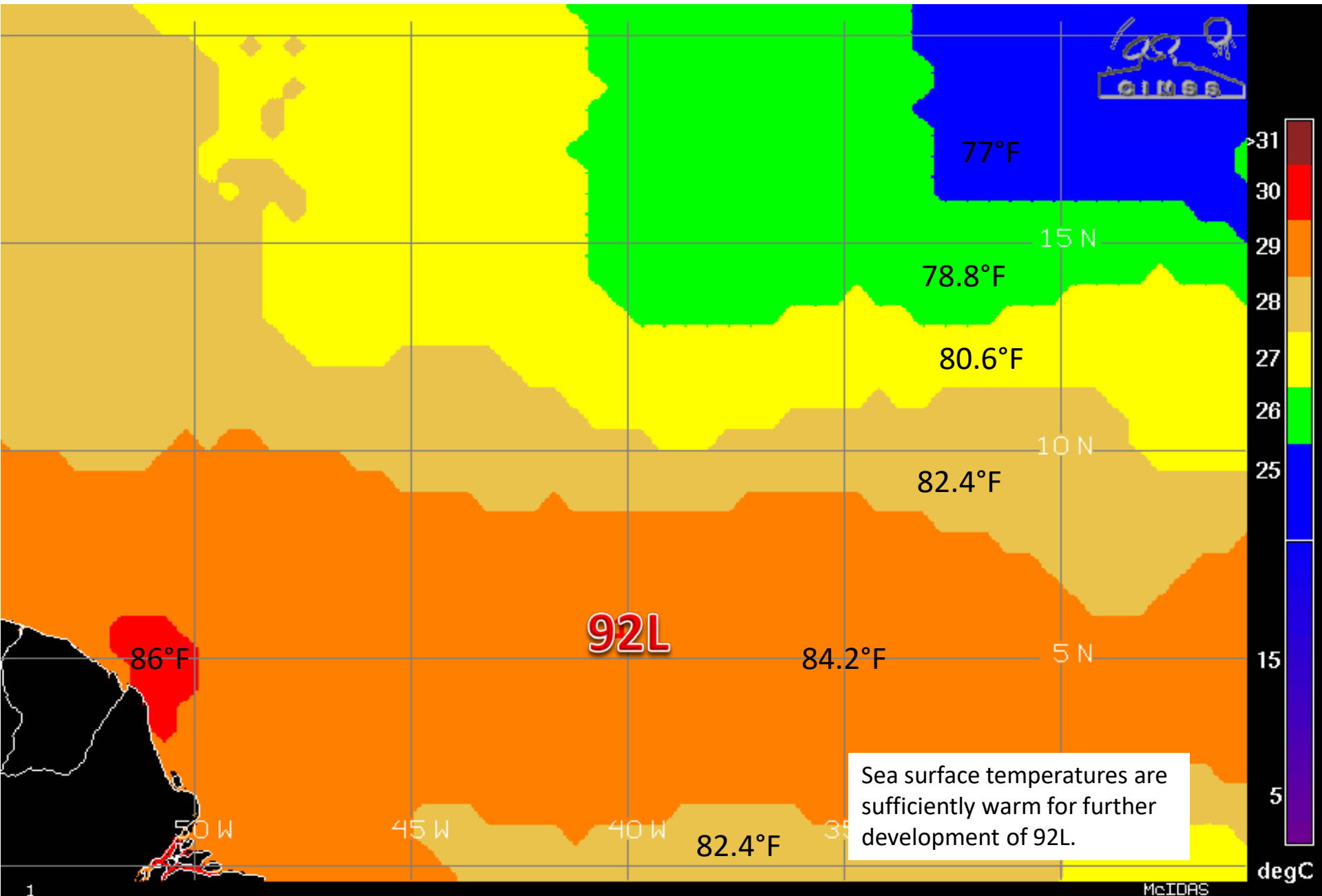
Initialized at 12z Jun 17 2017

Levi Cowan - tropicaltidbits.com



Track guidance for 92L indicates a west-northwesterly motion over the next 72 hours, taking it toward the southeastern Caribbean Sea. The guidance begins to diverge beyond that time frame, taking 92L anywhere from continuing along the South American coast to heading northwest toward the Dominican Republic and Haiti.

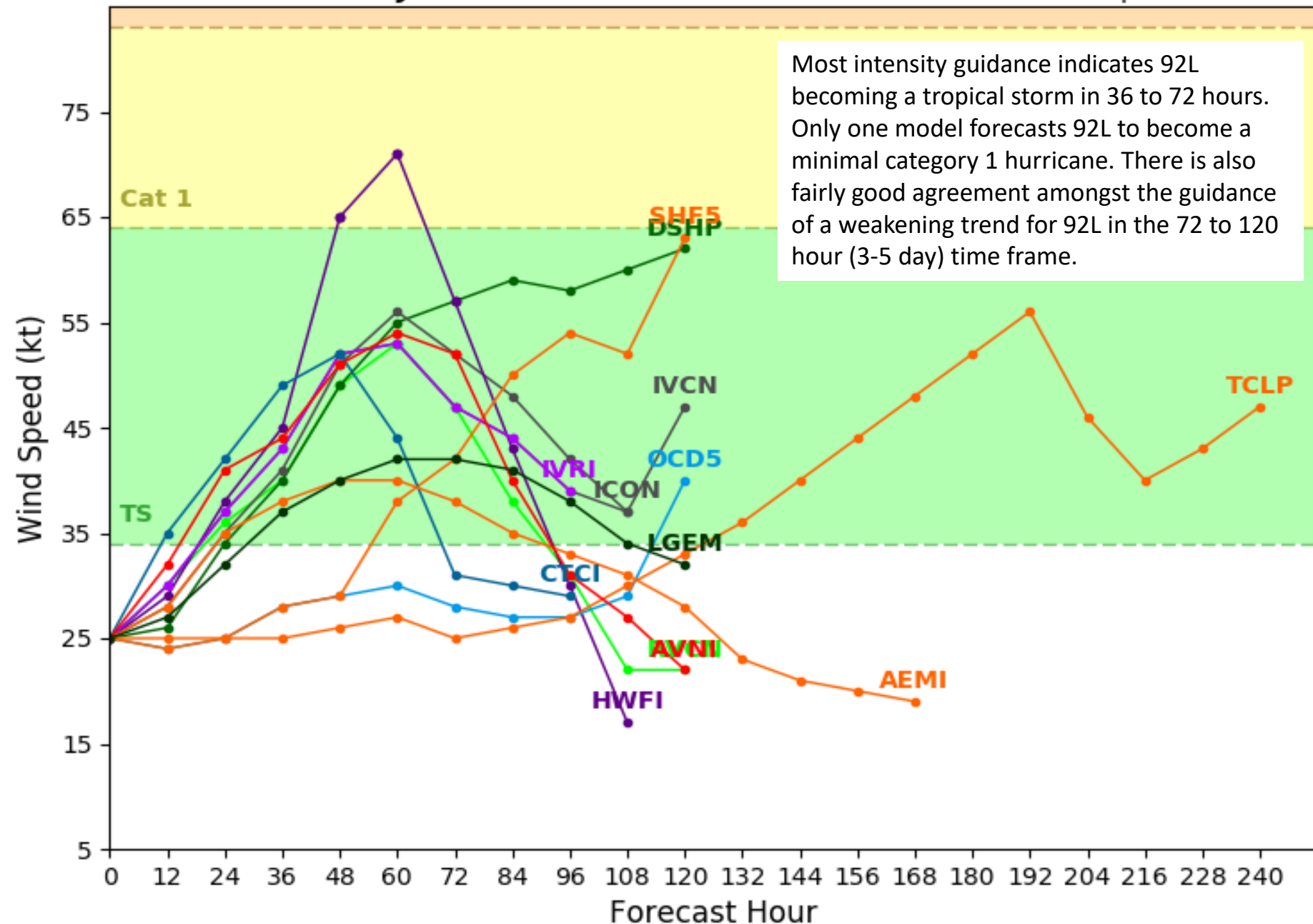
# Sea Surface Temperatures Near 92L



# Invest 92L Model Intensity Guidance

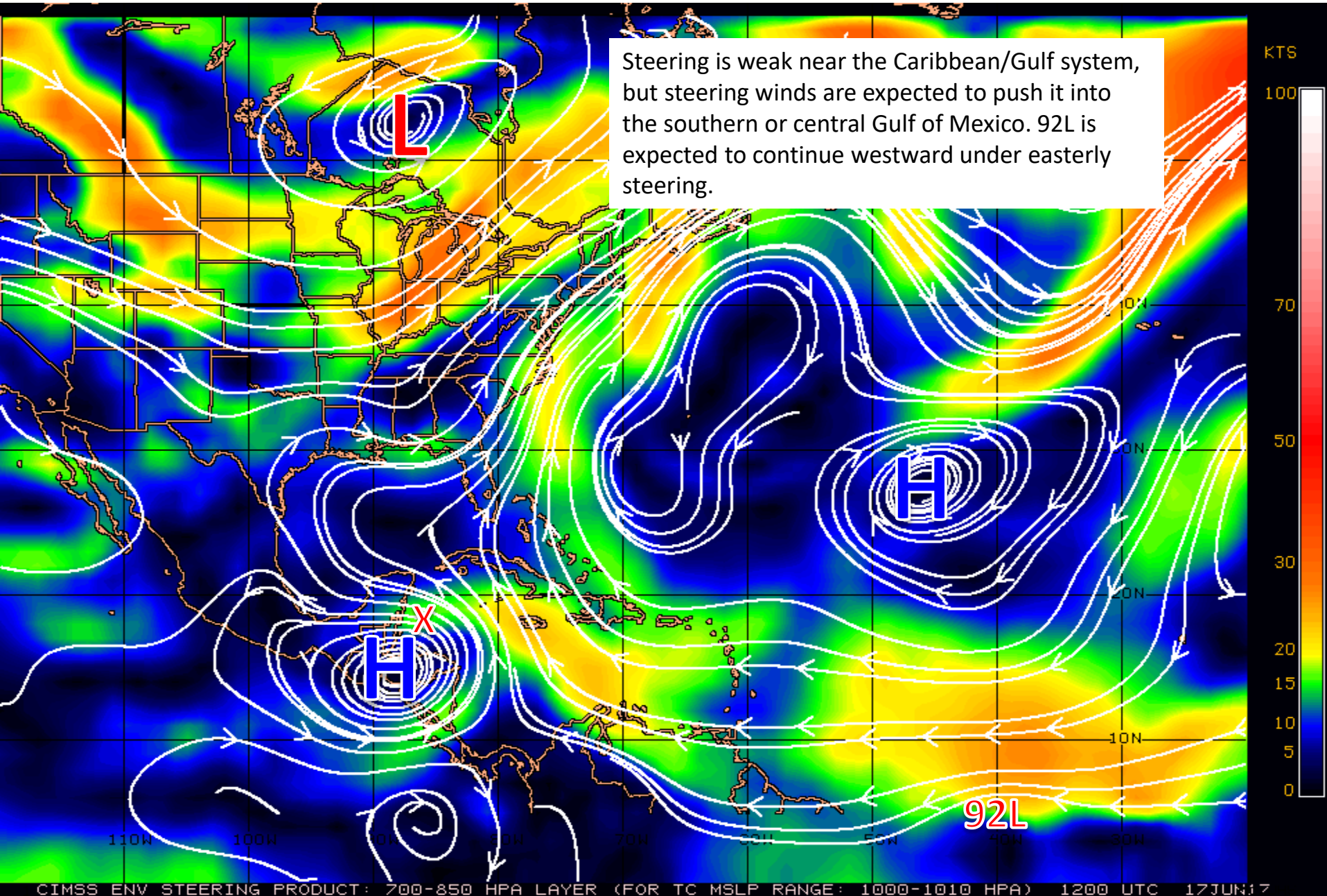
Initialized at 12z Jun 17 2017

Levi Cowan - tropicaltidbits.com



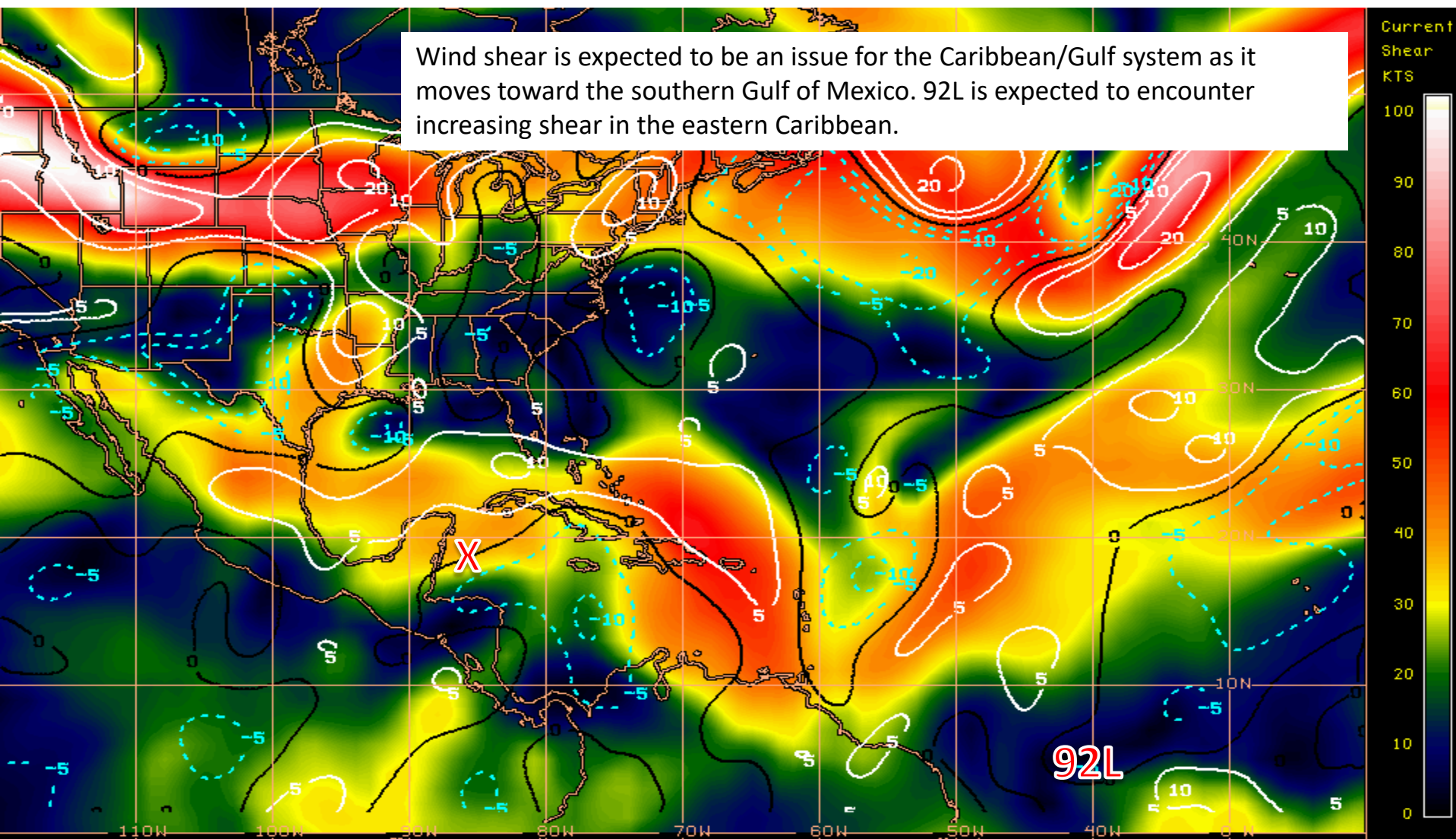


# Steering Currents



# Current Wind Shear (Shaded) and Shear Tendency (Lines)

Wind shear is expected to be an issue for the Caribbean/Gulf system as it moves toward the southern Gulf of Mexico. 92L is expected to encounter increasing shear in the eastern Caribbean.



Shear Tendency (KTS) Over Past 24 Hours: Increasing — Decreasing ----

## Summary:

- A broad area of low pressure is producing cloudiness and showers over the northwestern Caribbean Sea. Conditions appear favorable for additional gradual development as it moves across the Yucatan Peninsula this weekend, and it could become a tropical cyclone early next week over the southern or central Gulf of Mexico.
- The National Hurricane Center has given this system a 20% (low) chance of development over the next 48 hours, but a 70% (high) chance of development within two to five days.
- This system has not yet been designated an invest area, so there is no track or intensity guidance available.
- Unfortunately, global computer models remain split on this system's future track beyond its expected movement into the southern and central Gulf of Mexico early next week, and the possibilities range from northern Mexico to the Florida Panhandle as a weak tropical system due to increasing wind shear. They also remain inconsistent from run to run, which is typical for developing or weak tropical systems, and they are unreliable until there is a defined center of circulation.
- A tropical wave located about 1500 miles east-southeast of the Windward Islands, designated Invest Area 92L, has changed little in organization over the past 24 hours.
- It has been given a 40% (medium) chance of development over the next 48 hours and a 70% (high) chance of development over the next five days as it moves westward over the tropical Atlantic.
- Track guidance indicates a west-northwesterly movement over the next 72 hours toward the southeastern Caribbean Sea, but diverges considerably beyond 72 hours. Intensity guidance indicates 92L could become a tropical storm within the next three days before a weakening trend begins.
- The next names on the 2017 Atlantic storm list are Bret and Cindy.
- No other tropical cyclone activity is currently expected over the next five days.

## Florida Outlook:

- There continues to be significant uncertainty regarding the Caribbean/Gulf system, therefore it should be monitored closely through the weekend and into early next week.
- Regardless of development, moisture associated with the Caribbean/Gulf system is expected to increase rain chances, and the possibility of locally heavy rainfall, in Florida in the middle part of next week. Increased wave heights and an elevated risk for rip currents are also possible along the Panhandle and Gulf coasts in the early to middle part of next week.
- 92L is unlikely to have any impact on Florida, at least within the next 5 to 7 days.

Another briefing packet will be issued Sunday morning. For more information, visit the NHC website at [www.hurricanes.gov](http://www.hurricanes.gov).





# TROPICAL UPDATE

Created by:

William Watson, Assistant State Meteorologist  
[william.watson@em.myflorida.com](mailto:william.watson@em.myflorida.com)

State Meteorological Support Unit

Florida Division of Emergency Management

Users wishing to subscribe (approval pending) to this distribution list, register at  
[https://public.govdelivery.com/accounts/FLDEM/subscriber/new?topic\\_id=SERT\\_Met\\_Tropics](https://public.govdelivery.com/accounts/FLDEM/subscriber/new?topic_id=SERT_Met_Tropics).  
Other reports available for subscription are available at  
<https://public.govdelivery.com/accounts/FLDEM/subscriber/new?preferences=true>