



TROPICAL UPDATE

11 AM EDT

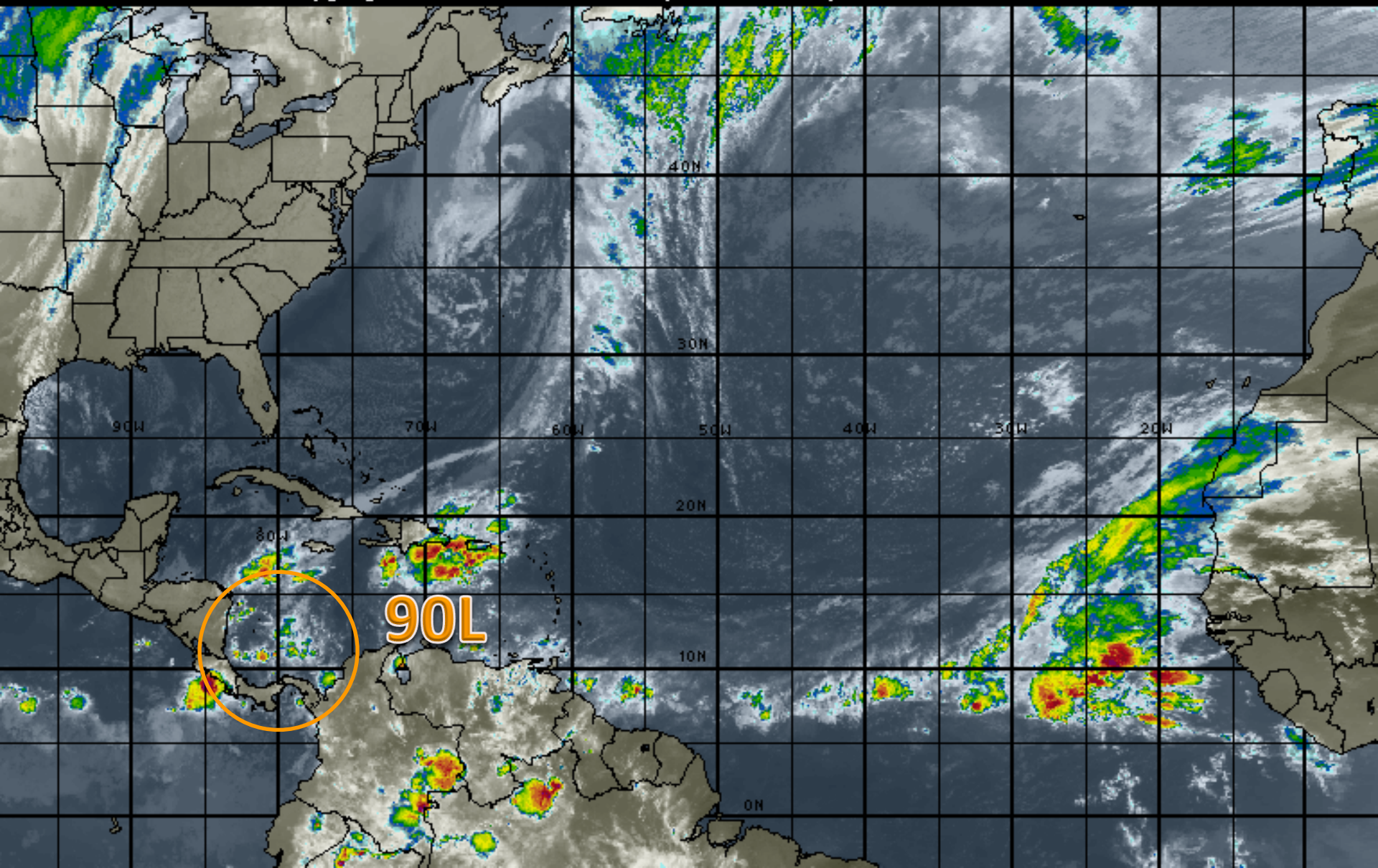
Friday, November 18, 2016

Invest Area 90L (60%)

This update is intended for government and emergency response officials, and is provided for informational and situational awareness purposes only. Forecast conditions are subject to change based on a variety of environmental factors. For additional information, or for any life safety concerns with an active weather event please contact your County Emergency Management or Public Safety Office, local National Weather Service forecast office or visit the National Hurricane Center website at www.nhc.noaa.gov.

Atlantic Basin Satellite Image

12:00 18-NOV-2016 GMT Copyright © 1998-2016 WSI Corporation <http://www.wsi.com>





Two-Day Graphical Tropical Weather Outlook

National Hurricane Center Miami, Florida



Disturbance 1

Satellite Image from
6:30 am EST Nov 18
www.hurricanes.gov

7:00 am EST
Fri Nov 18 2016

(10%)

Current Disturbances and Two-Day Cyclone Formation Chance: < 40% 40-60% > 60%

Tropical or Sub-Tropical Cyclone: Depression Storm Hurricane

Post-Tropical Cyclone Remnants



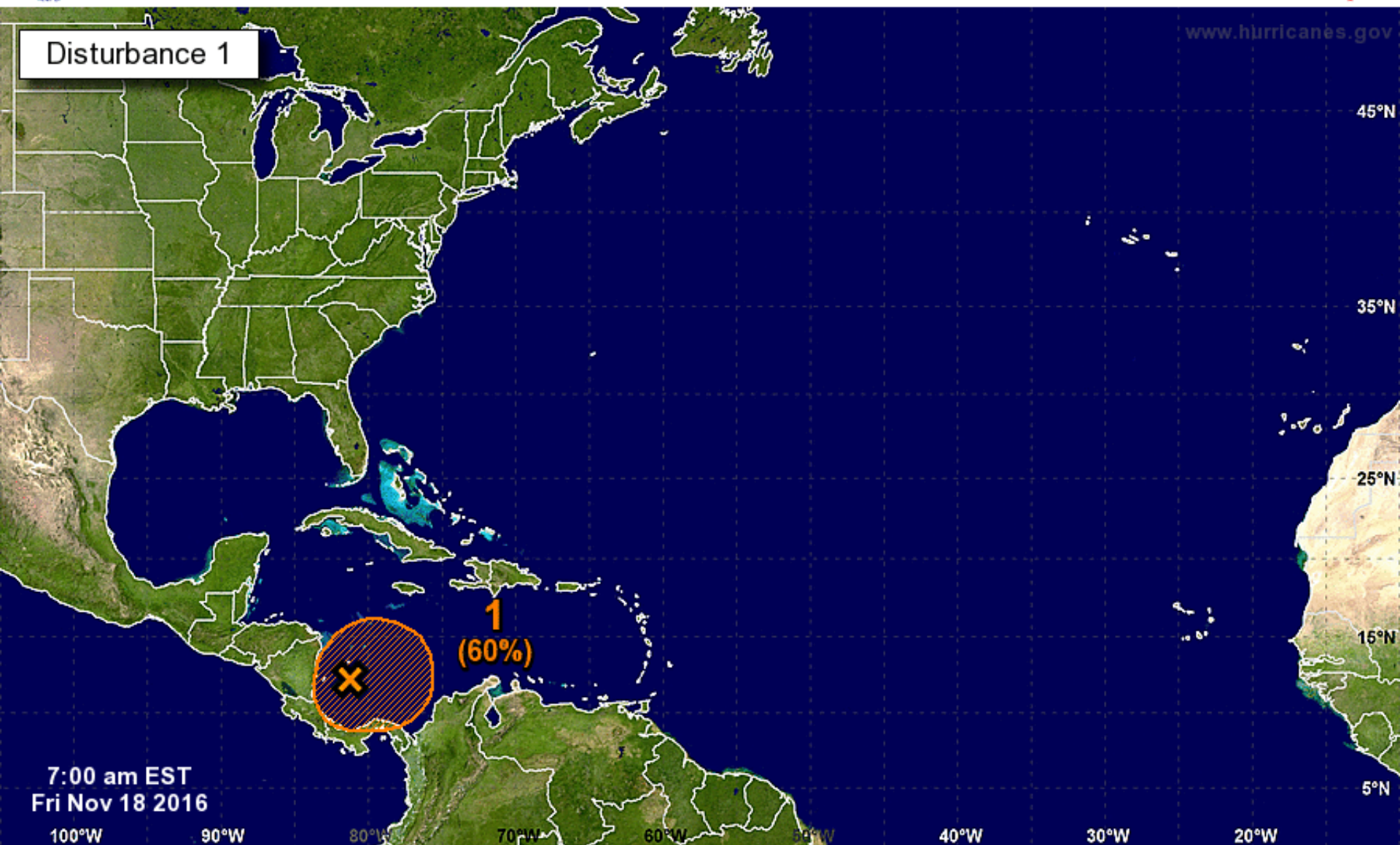
Five-Day Graphical Tropical Weather Outlook

National Hurricane Center Miami, Florida



www.hurricanes.gov

Disturbance 1



Tropical Cyclone Formation Potential for the Five-Day Period Ending at 7:00 am EST Wed Nov 23 2016

Chance of Cyclone Formation in Five Days: ■ Low < 40% ■ Medium 40-60% ■ High > 60%

X indicates current disturbance location; shading indicates potential formation area.

Invest 90L

7 AM Fri Nov 18 2016

Position 11.4 81.9 W

Maximum Winds 25 mph

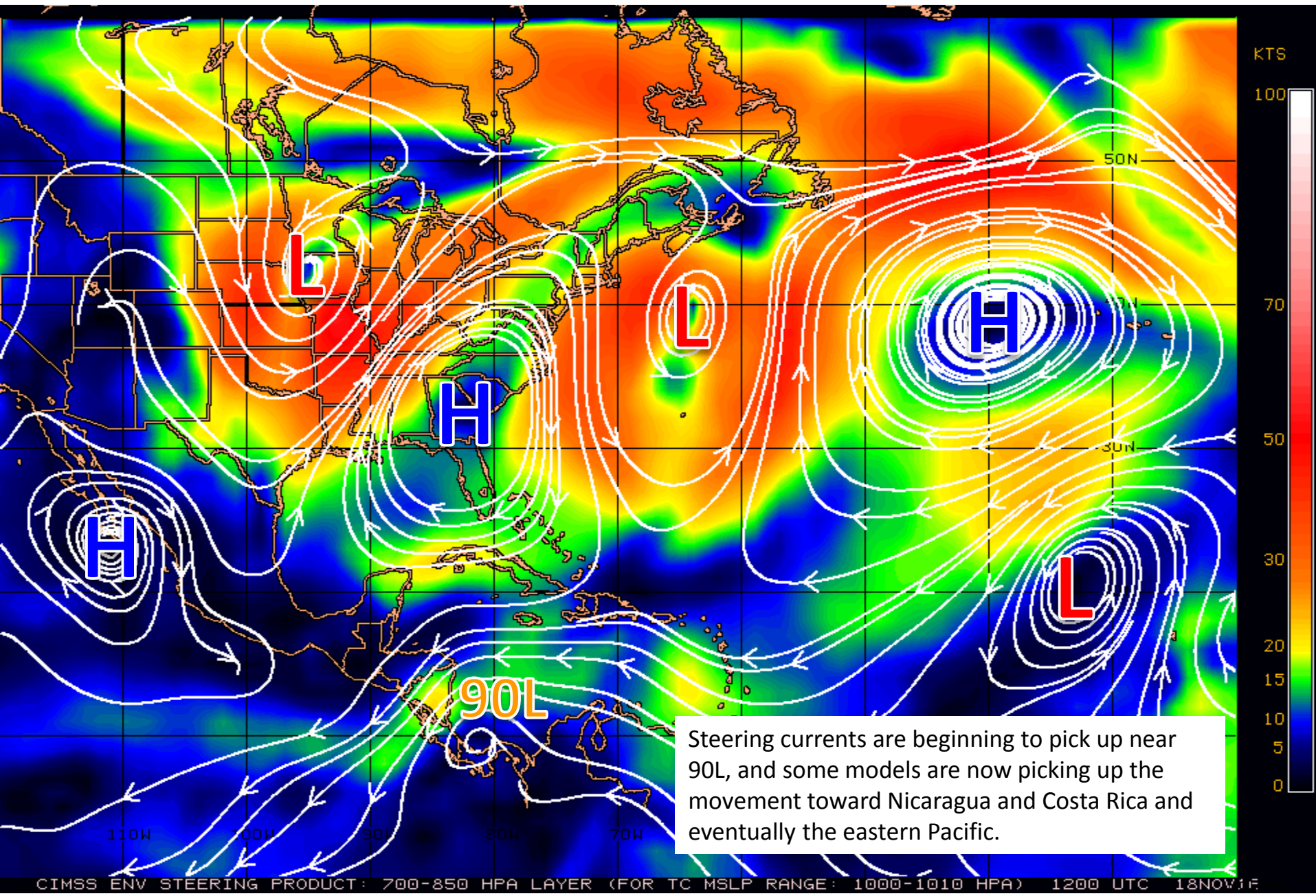
Movement SW at 5 mph

Blue Marble basemap imagery, courtesy NASA

Satellite 2:36 PM UTC
2:36 PM GMT

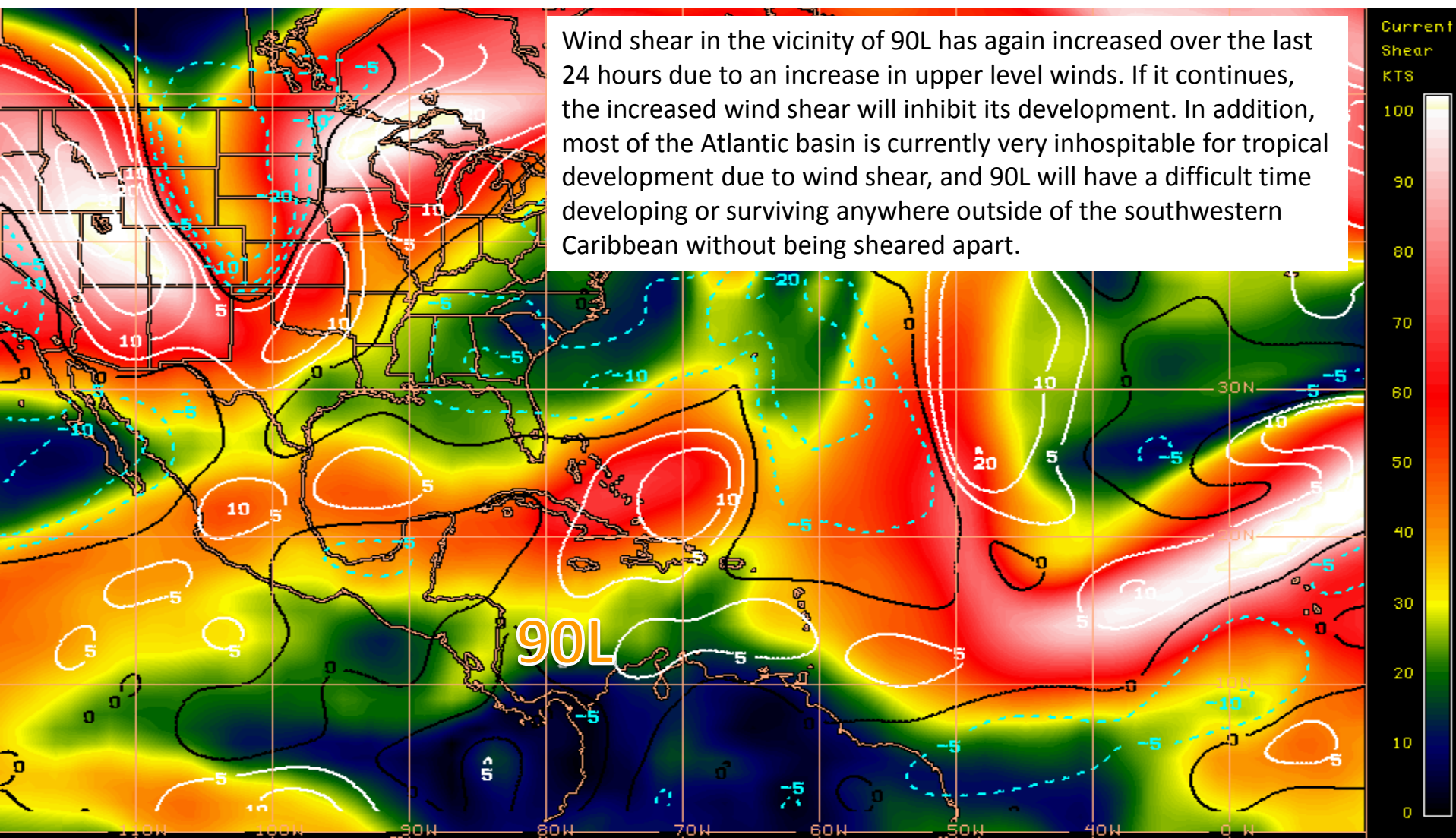


Steering Currents



Current Wind Shear (Shaded) and Shear Tendency (Lines)

Wind shear in the vicinity of 90L has again increased over the last 24 hours due to an increase in upper level winds. If it continues, the increased wind shear will inhibit its development. In addition, most of the Atlantic basin is currently very inhospitable for tropical development due to wind shear, and 90L will have a difficult time developing or surviving anywhere outside of the southwestern Caribbean without being sheared apart.



Shear Tendency (KTS) Over Past 24 Hours: Increasing — Decreasing ----

GOES-EAST 24 HOUR WIND SHEAR TENDENCY PRODUCT

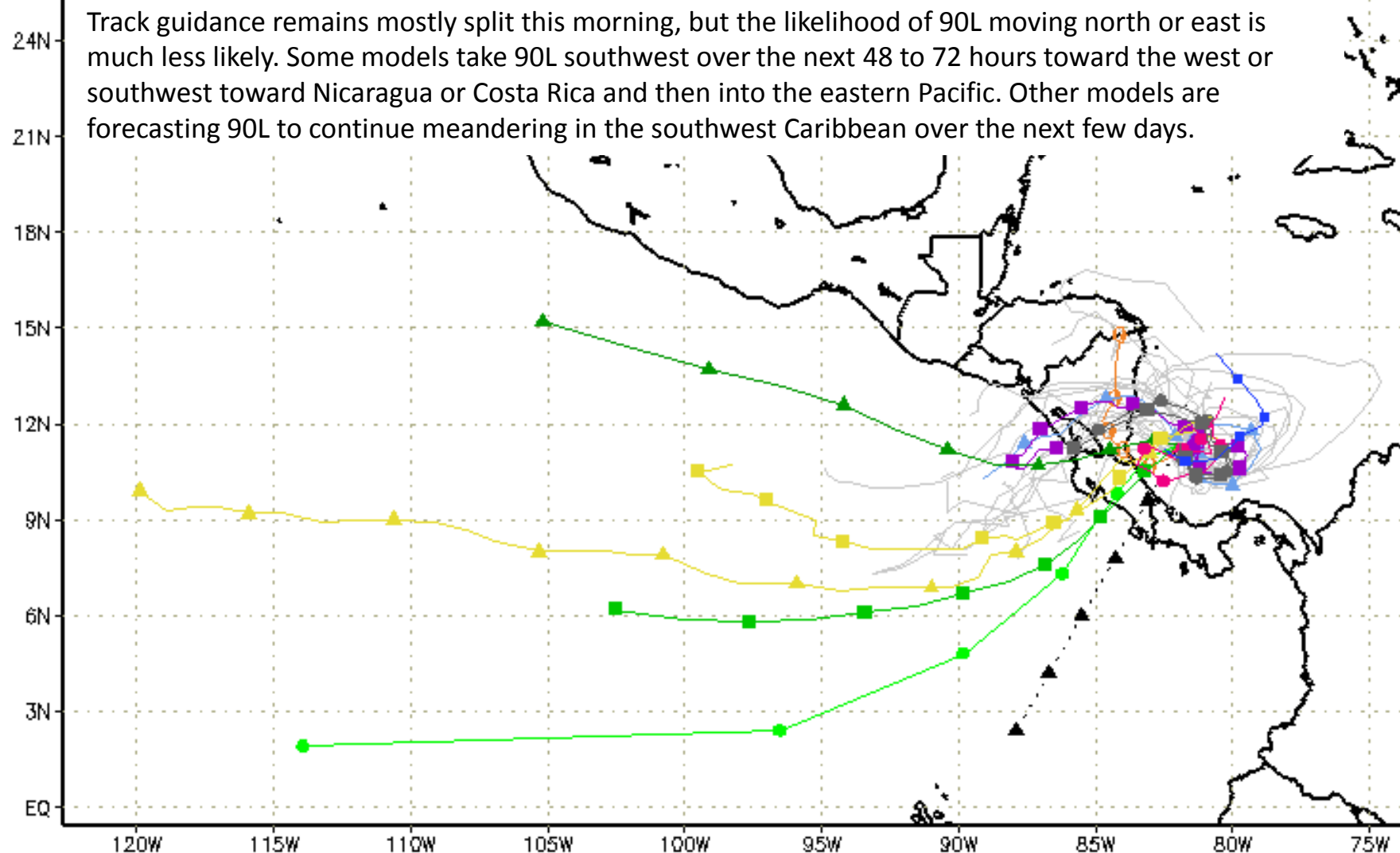
1200 UTC

18NOV16

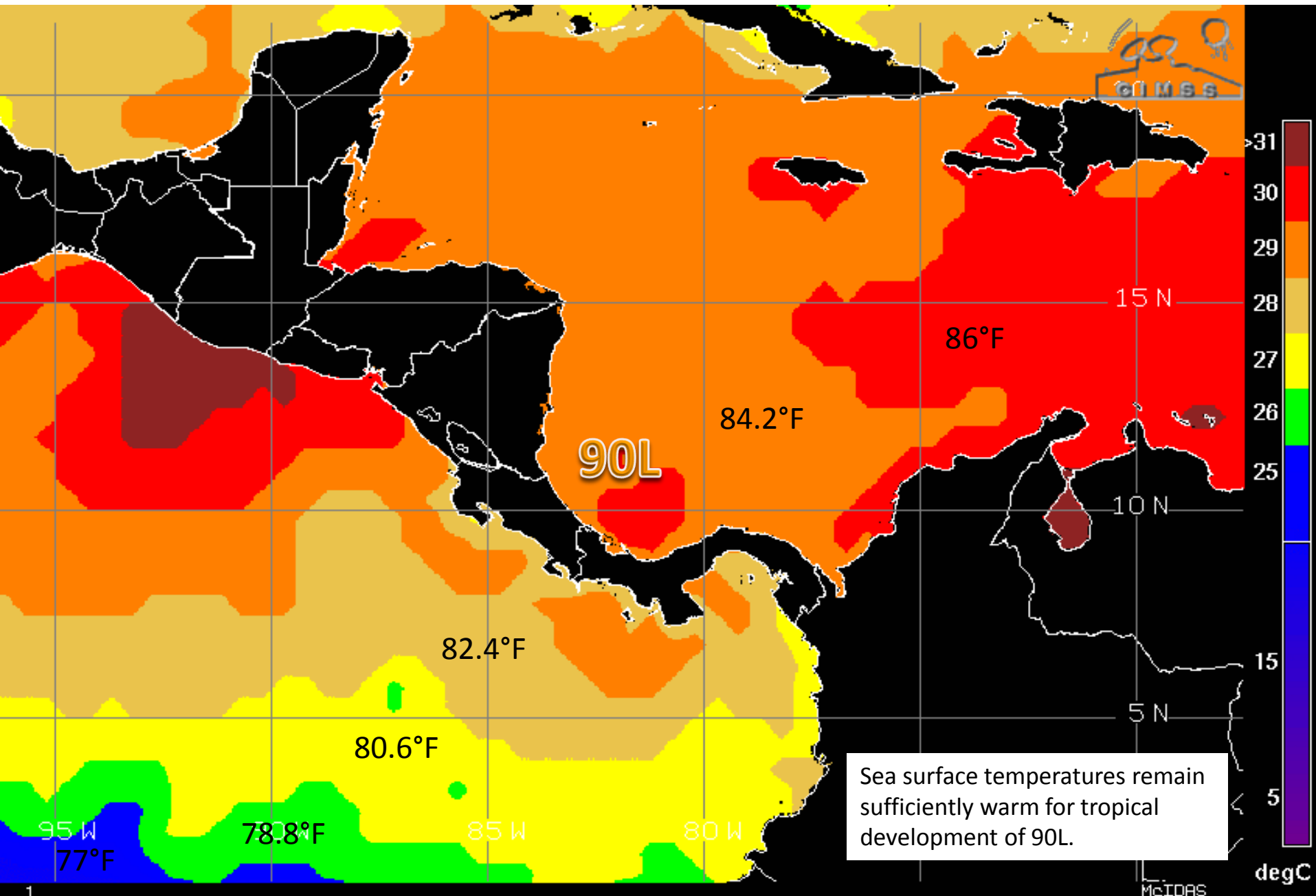
UW-CIMSS

McIDAS

--▲-- XTRP 18/1200Z ▲ BAMD 18/1200Z ▲ GFDL Not Avail ▲ AVNO 18/0600Z ▲ CMC 18/0000Z
 ■ TVCN 18/1200Z ■ BAMD 18/1200Z ■ GFDL Not Avail ■ AEMN 18/0600Z ■ CEMN 18/0000Z
 ● TVCX 18/1200Z ● BAMS 18/1200Z ● HWRF 17/1200Z ● APxx 18/0600Z ● UKM 18/0000Z
 ● NHC Not Avail ● NVGM Not Avail ● COTC Not Avail ● NAM 18/0600Z ● CLP5 18/1200Z



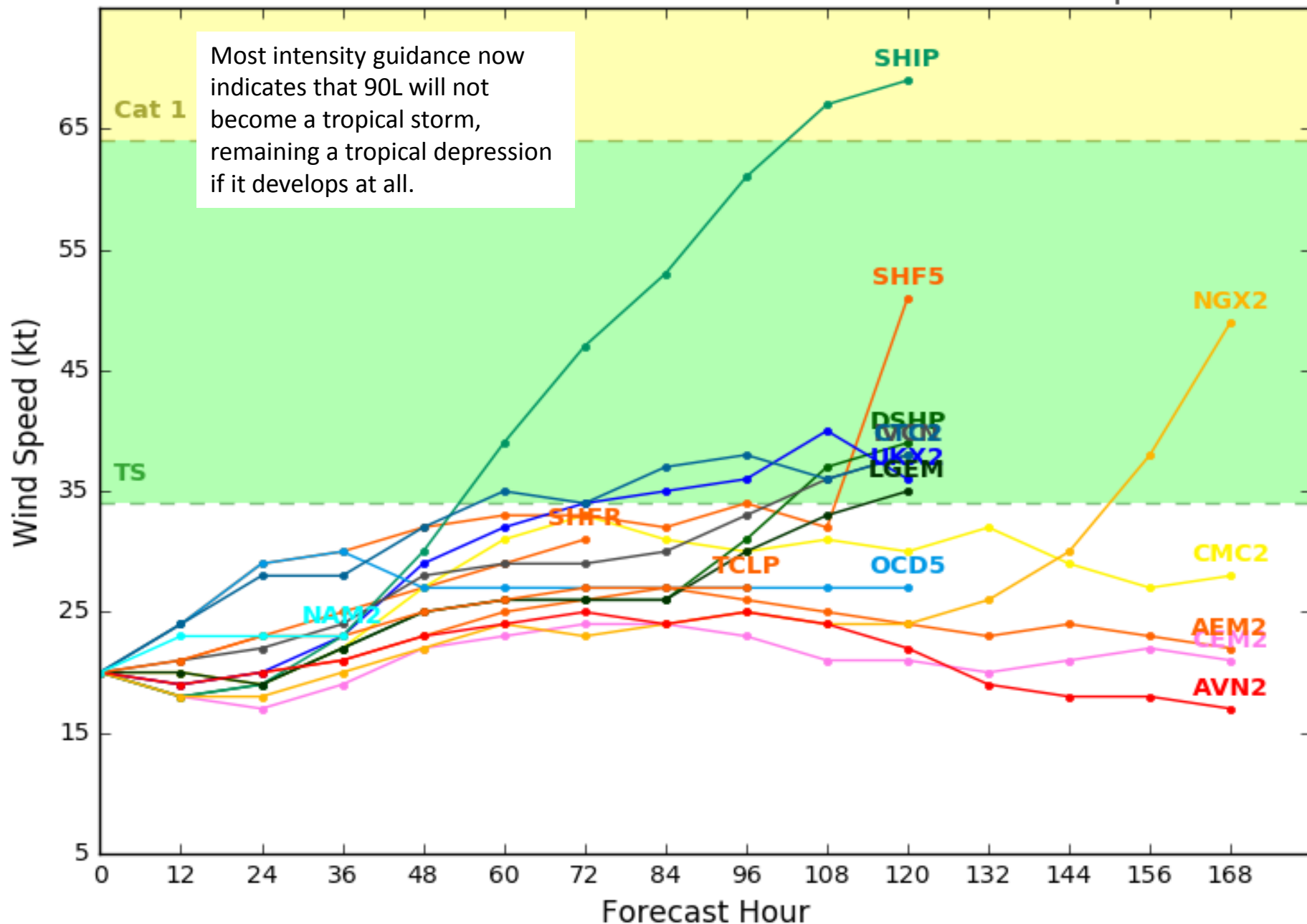
Sea Surface Temperatures Near 90L



Invest 90L Model Intensity Guidance

Initialized at 12z Nov 18 2016

Levi Cowan - tropicaltidbits.com



Summary:

- Invest 90L, a broad area of low pressure in the southwest Caribbean Sea, continues to produce disorganized cloudiness and showers.
- Any development should be slow to occur over the next couple of days due to increased wind shear in the vicinity. Beyond that time, conditions are expected to be more favorable for gradual development, and 90L could develop into a tropical depression early next week as it moves slowly and erratically.
- It has a 10% (low) chance of development over the next 48 hours and a 60% (medium) chance of development over the next five days. Each of these percentages is slightly lower compared to this time yesterday.
- Model track guidance is mostly split this morning. Some models indicate a generally southwesterly movement over the next 48 to 72 hours toward and/or over Nicaragua or Costa Rica. Those models then take 90L west into the eastern Pacific Ocean. Other models continue 90L's erratic and slow meandering in the southwest Caribbean Sea through 120 hours.
- Most model intensity guidance now indicates that 90L may not even become a tropical storm, remaining only a tropical depression if it develops at all.
- The next name on the 2016 Atlantic storm list is Otto.

Florida Outlook:

- It is still too early to determine what, if any, impacts 90L will have on Florida. However, it is increasingly likely that 90L never has any impact on Florida.

Another briefing packet will be issued Saturday morning. For more information, visit the NHC website at www.nhc.noaa.gov.



TROPICAL UPDATE

Created by:

William Watson, Assistant State Meteorologist
william.watson@em.myflorida.com

State Meteorological Support Unit

Florida Division of Emergency Management

Users wishing to subscribe (approval pending) to this distribution list, register at
https://public.govdelivery.com/accounts/FLDEM/subscriber/new?topic_id=SERT_Met_Tropics.
Other reports available for subscription are available at
<https://public.govdelivery.com/accounts/FLDEM/subscriber/new?preferences=true>