



TROPICAL UPDATE

10 AM EDT

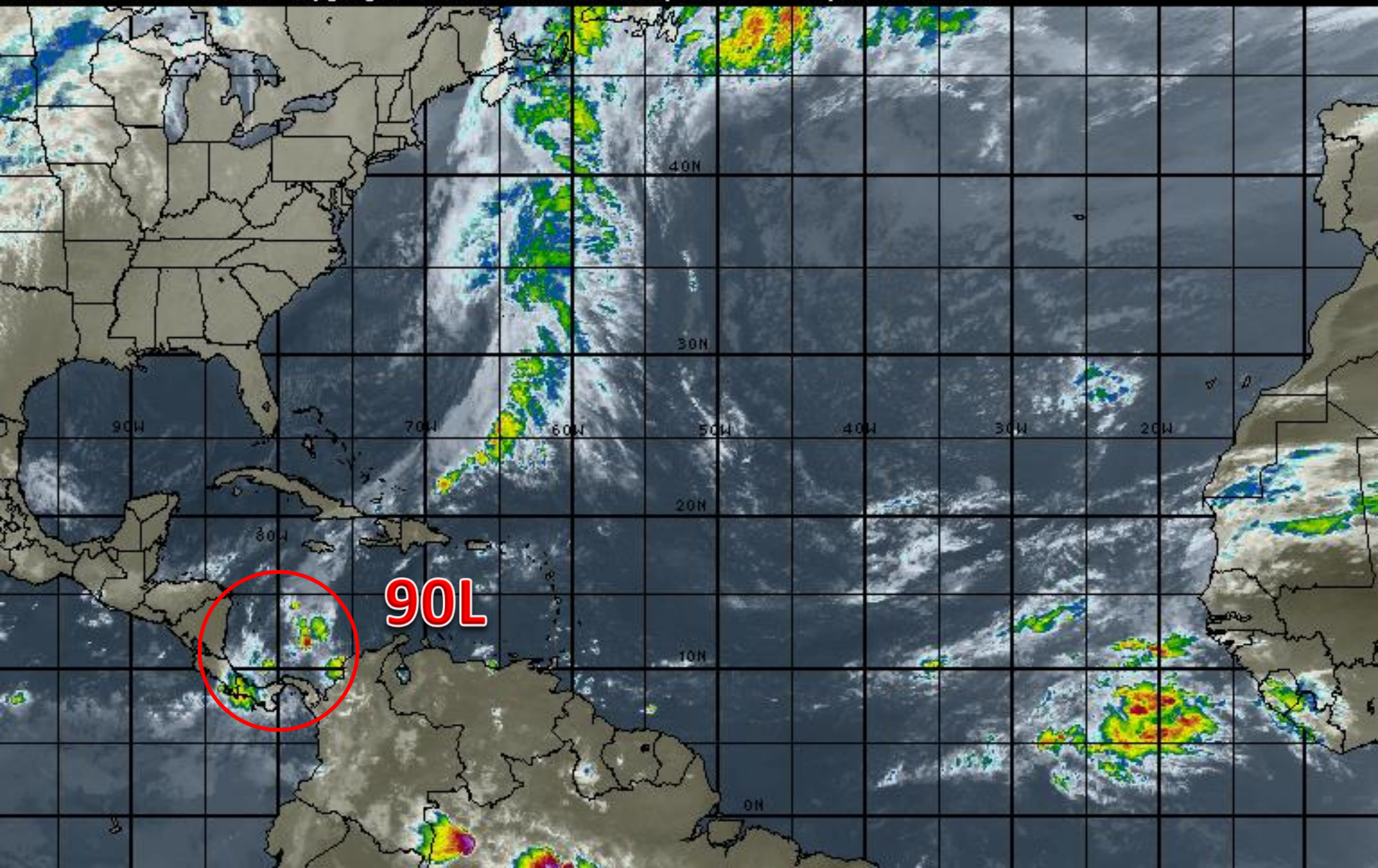
Thursday, November 17, 2016

Invest Area 90L (70%)

This update is intended for government and emergency response officials, and is provided for informational and situational awareness purposes only. Forecast conditions are subject to change based on a variety of environmental factors. For additional information, or for any life safety concerns with an active weather event please contact your County Emergency Management or Public Safety Office, local National Weather Service forecast office or visit the National Hurricane Center website at www.nhc.noaa.gov.

Atlantic Basin Satellite Image

12:00 17-NOV-2016 GMT Copyright © 1998-2016 WSI Corporation <http://www.wsi.com>





Two-Day Graphical Tropical Weather Outlook

National Hurricane Center Miami, Florida



Disturbance 1

Satellite Image from 20N
6:30 am EST Nov 17
www.hurricanes.gov

7:00 am EST
Thu Nov 17 2016

(20%)

Current Disturbances and Two-Day Cyclone Formation Chance: ✕ < 40% ✕ 40-60% ✕ > 60%

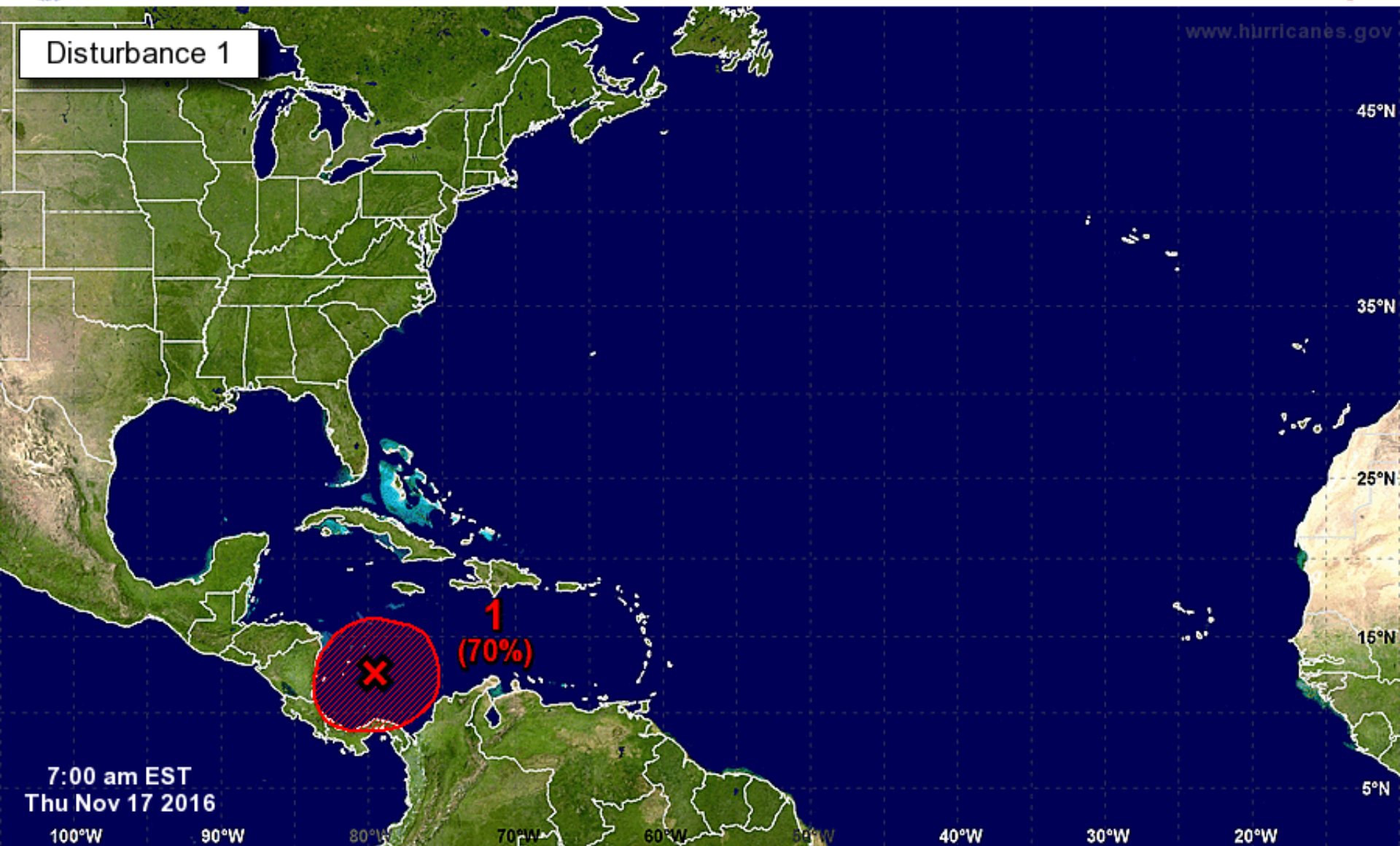
Tropical or Sub-Tropical Cyclone: ○ Depression 🌀 Storm 🌀 Hurricane

⊗ Post-Tropical Cyclone ✕ Remnants



Five-Day Graphical Tropical Weather Outlook

National Hurricane Center Miami, Florida



7:00 am EST
Thu Nov 17 2016

Tropical Cyclone Formation Potential for the Five-Day Period Ending at 7:00 am EST Tue Nov 22 2016

Chance of Cyclone Formation in Five Days: ■ Low < 40% ■ Medium 40-60% ■ High > 60%

X indicates current disturbance location; shading indicates potential formation area.

Invest 90L

7 AM Thu Nov 17 2016

Position 13.0 80.4 W

Maximum Winds 25.mph

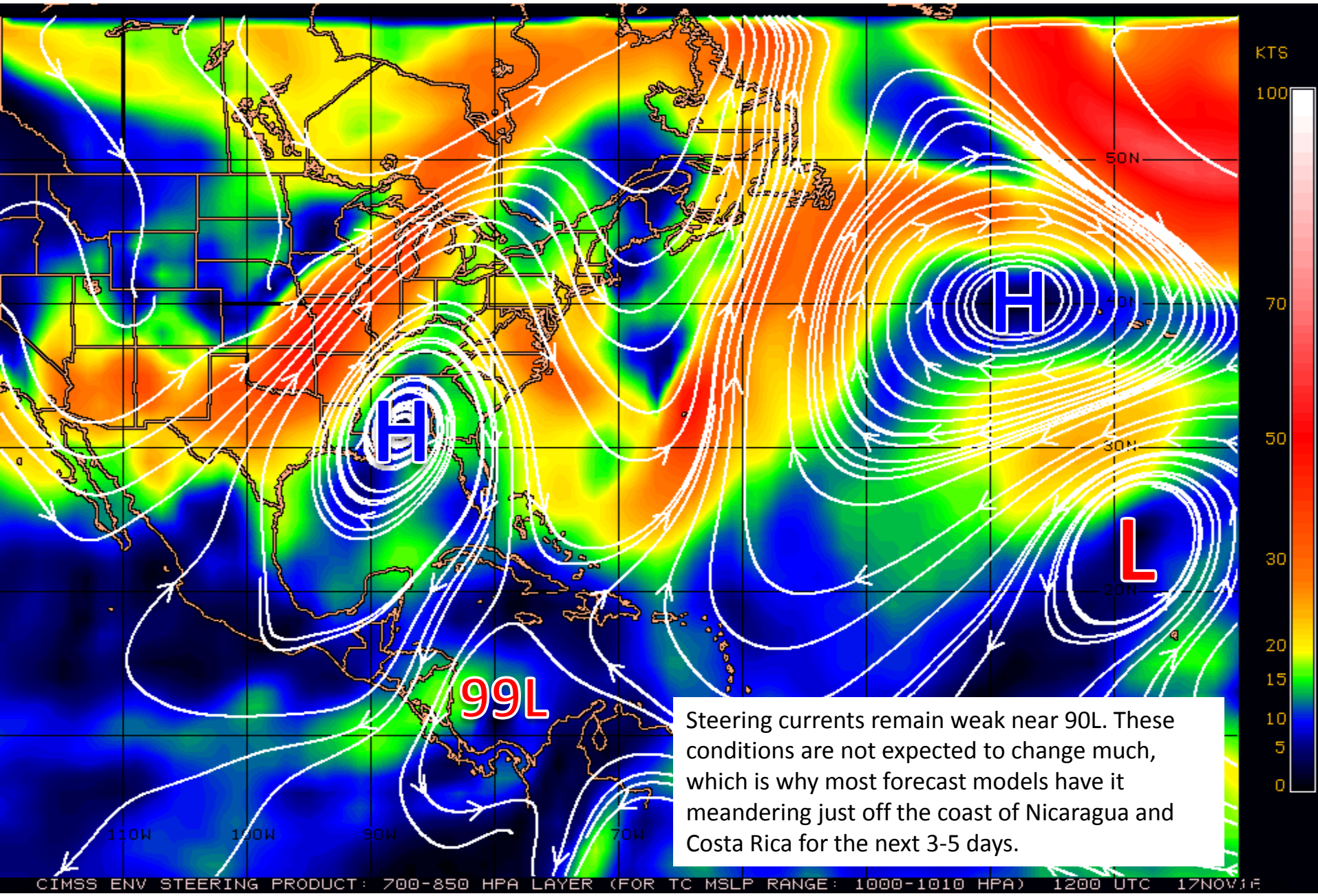
Movement W at 2 mph

Blue Marble basemap imagery courtesy NASA

Satellite 2:57 PM UTC
2:57 PM GMT

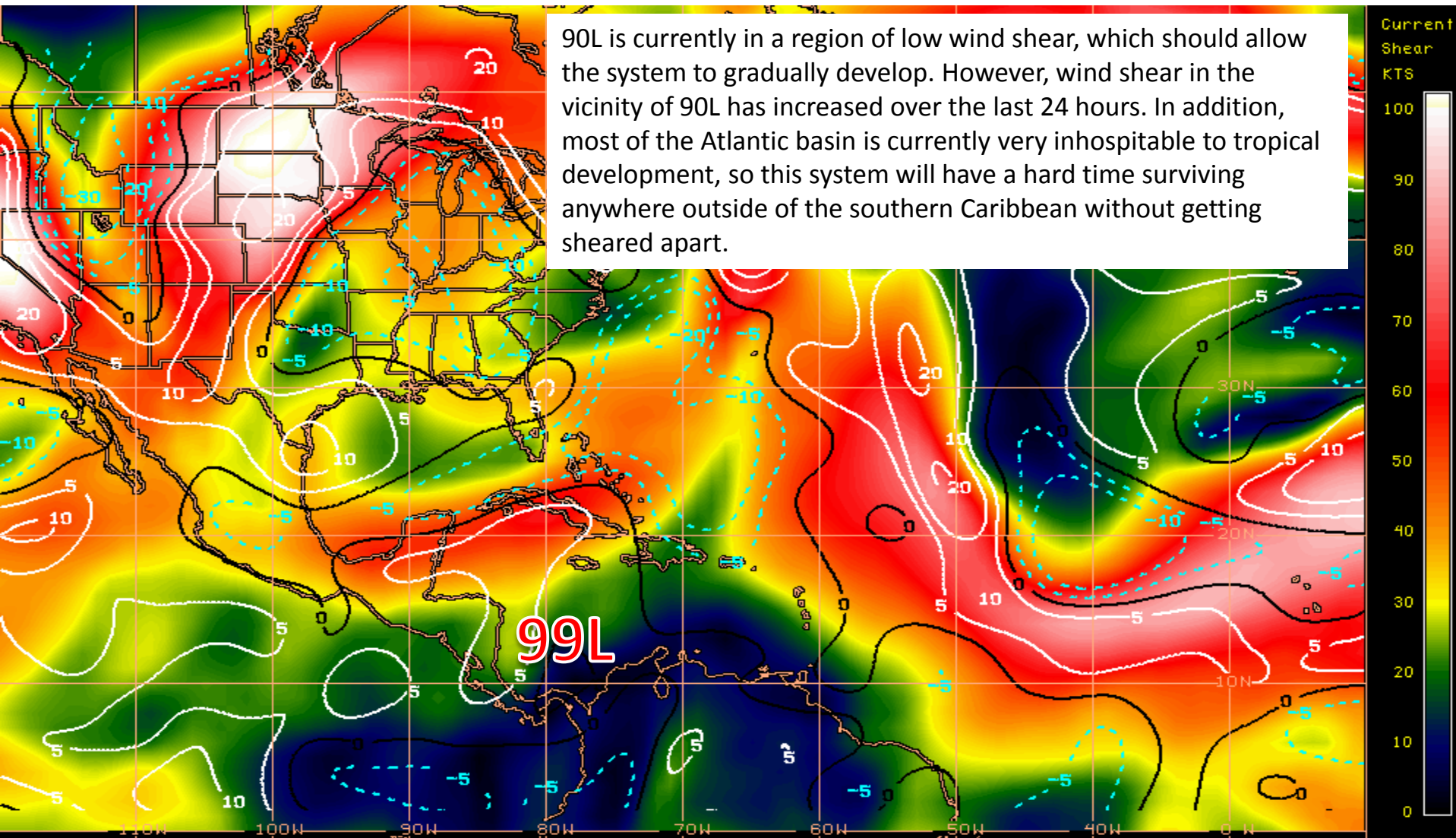


Steering Currents



Current Wind Shear (Shaded) and Shear Tendency (Lines)

90L is currently in a region of low wind shear, which should allow the system to gradually develop. However, wind shear in the vicinity of 90L has increased over the last 24 hours. In addition, most of the Atlantic basin is currently very inhospitable to tropical development, so this system will have a hard time surviving anywhere outside of the southern Caribbean without getting sheared apart.



Shear Tendency (KTS) Over Past 24 Hours: Increasing — Decreasing ----

GOES-EAST 24 HOUR WIND SHEAR TENDENCY PRODUCT

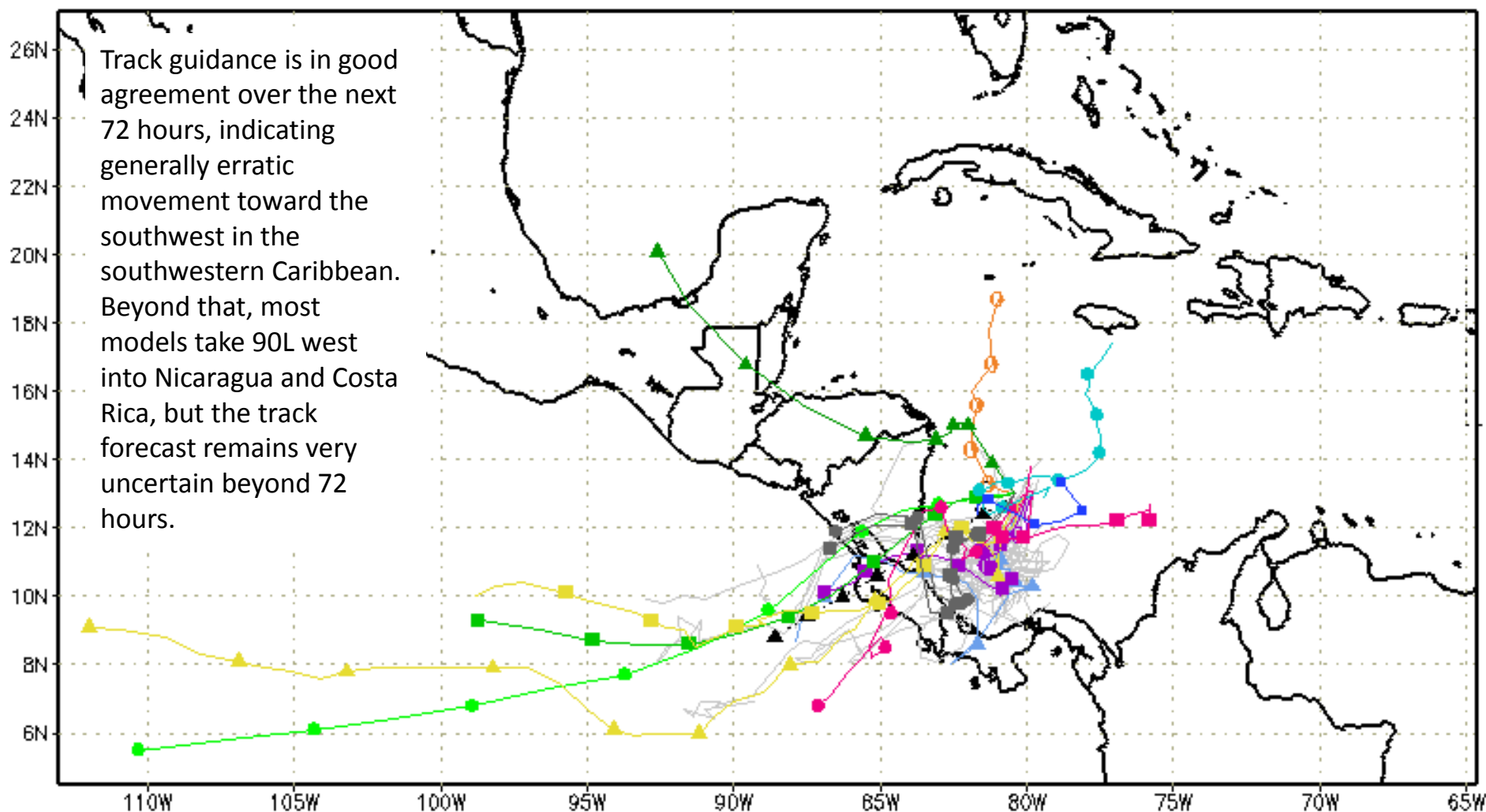
1200 UTC

17NOV16

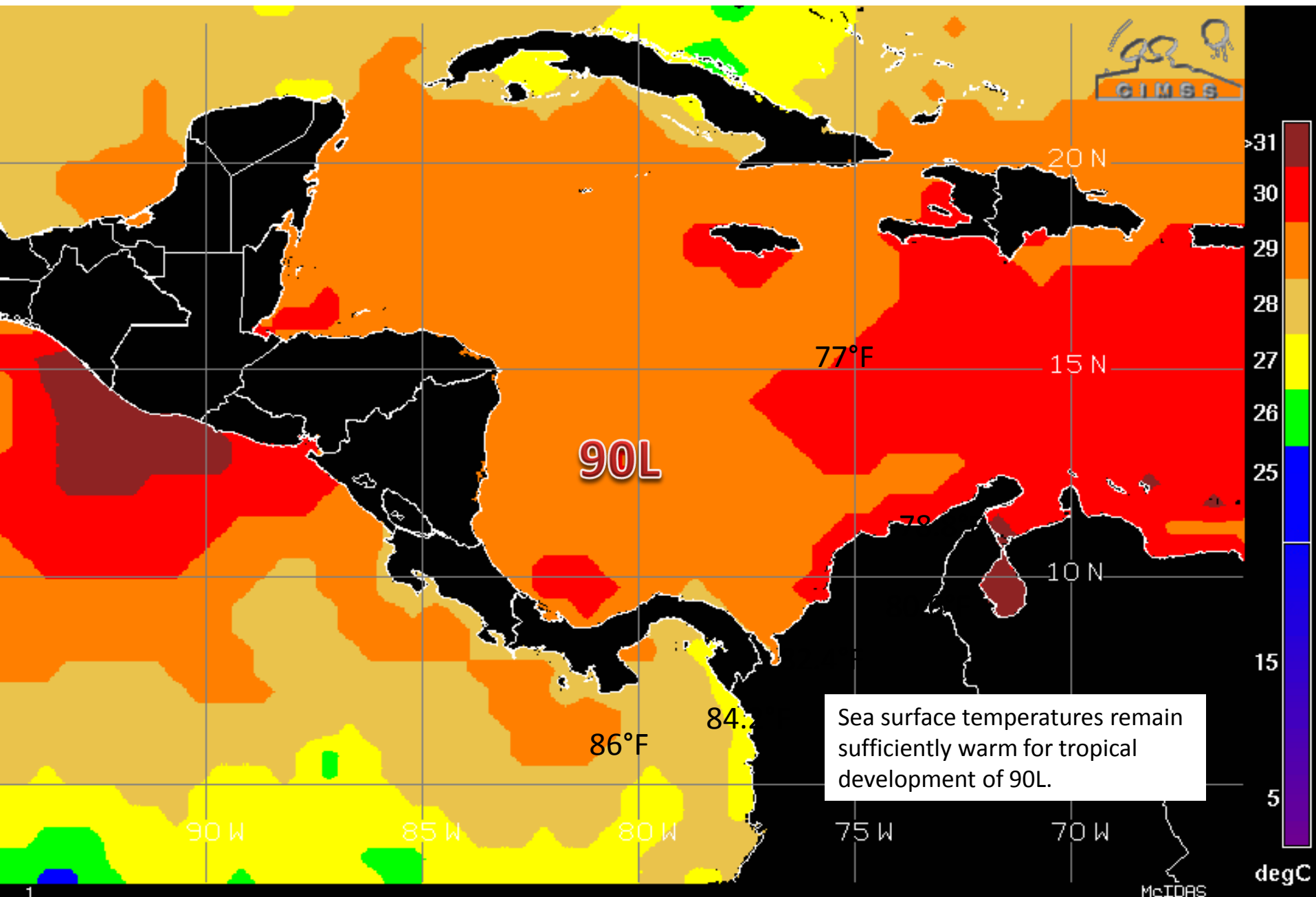
UW-CIMSS

McIDAS

--▲-- XTRP 17/1200Z ▲ BAMD 17/1200Z ▲ GFDL 17/0600Z ▲ AVNO 17/0600Z ▲ CMC 17/0000Z
 ■ TVCN 17/1200Z ■ BAMB 17/1200Z ■ GFDN 17/0600Z ■ AEMN 17/0600Z ■ CEMN 17/0000Z
 ● TVCX 17/1200Z ● BAMS 17/1200Z ● HWRF 17/0600Z ● APxx 17/0600Z ● UKM 17/0000Z
 ● NHC Not Avail ● NVGM 17/0600Z ● COTC Not Avail ● NAM 17/0600Z ● GLP5 17/1200Z



Sea Surface Temperatures Near 90L



Summary:

- Invest 90L, a broad area of low pressure in the southwest Caribbean Sea, continues to produce cloudiness and showers this morning. However, it has become a little less organized since yesterday.
- Conditions are still expected to be favorable for slow development over the next few days, and 90L could develop into a tropical depression this weekend or early next week as it moves slowly and erratically in the southwest Caribbean Sea.
- It has a 20% (low) chance of development over the next 48 hours and a 70% (high) chance of development over the next five days. Each of these percentages is slightly lower compared to yesterday.
- Model track guidance indicates a slow and erratic movement, generally to the southwest, over the next 72 hours due to weak steering currents. The guidance is less certain beyond that time, with most models taking 90L west into Nicaragua and/or Costa Rica and outliers taking it to the east or northeast.
- Model intensity guidance indicates slow, gradual strengthening, with most models forecasting a tropical storm at 96 hours. The guidance is mostly split beyond that time, with some models indicating continued intensification and others weakening 90L back to a tropical depression.
- The next name on the 2016 Atlantic storm list is Otto.

Florida Outlook:

- It is too early to determine what, if any, impacts 90L will have on Florida.

Another briefing packet will be issued Friday morning. For more information, visit the NHC website at www.nhc.noaa.gov.



TROPICAL UPDATE

Created by:

William Watson, Assistant State Meteorologist
william.watson@em.myflorida.com

State Meteorological Support Unit
Florida Division of Emergency Management

Users wishing to subscribe (approval pending) to this distribution list, register at
https://public.govdelivery.com/accounts/FLDEM/subscriber/new?topic_id=SERT_Met_Tropics.
Other reports available for subscription are available at
<https://public.govdelivery.com/accounts/FLDEM/subscriber/new?preferences=true>