



TROPICAL UPDATE

11 AM EDT

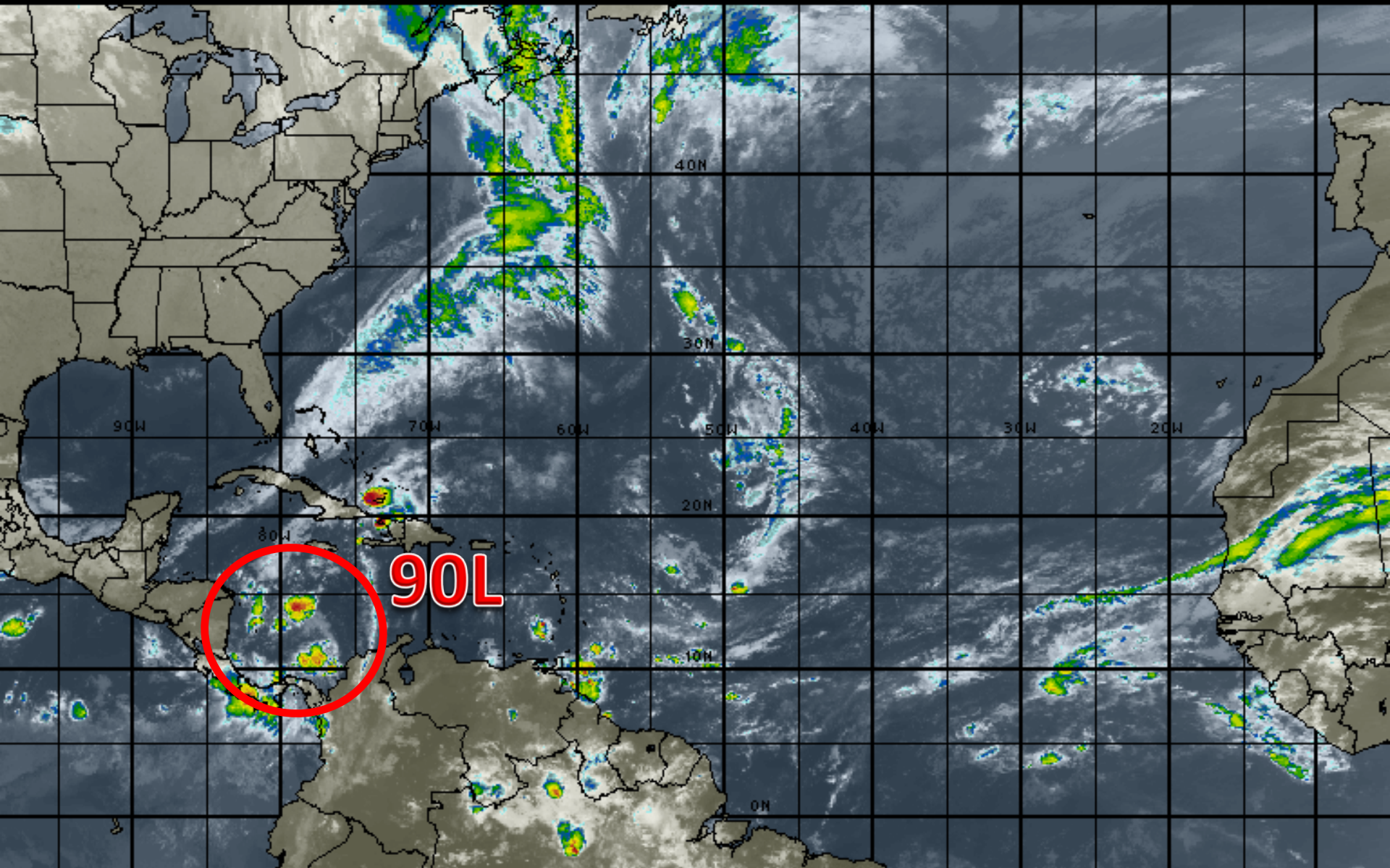
Wednesday, November 16, 2016

Invest 90L (80%)

This update is intended for government and emergency response officials, and is provided for informational and situational awareness purposes only. Forecast conditions are subject to change based on a variety of environmental factors. For additional information, or for any life safety concerns with an active weather event please contact your County Emergency Management or Public Safety Office, local National Weather Service forecast office or visit the National Hurricane Center website at www.nhc.noaa.gov.

Atlantic Basin Satellite Image

12:00 16-NOV-2016 GMT Copyright © 1998-2016 MSI Corporation <http://www.usi.com>





Five-Day Graphical Tropical Weather Outlook

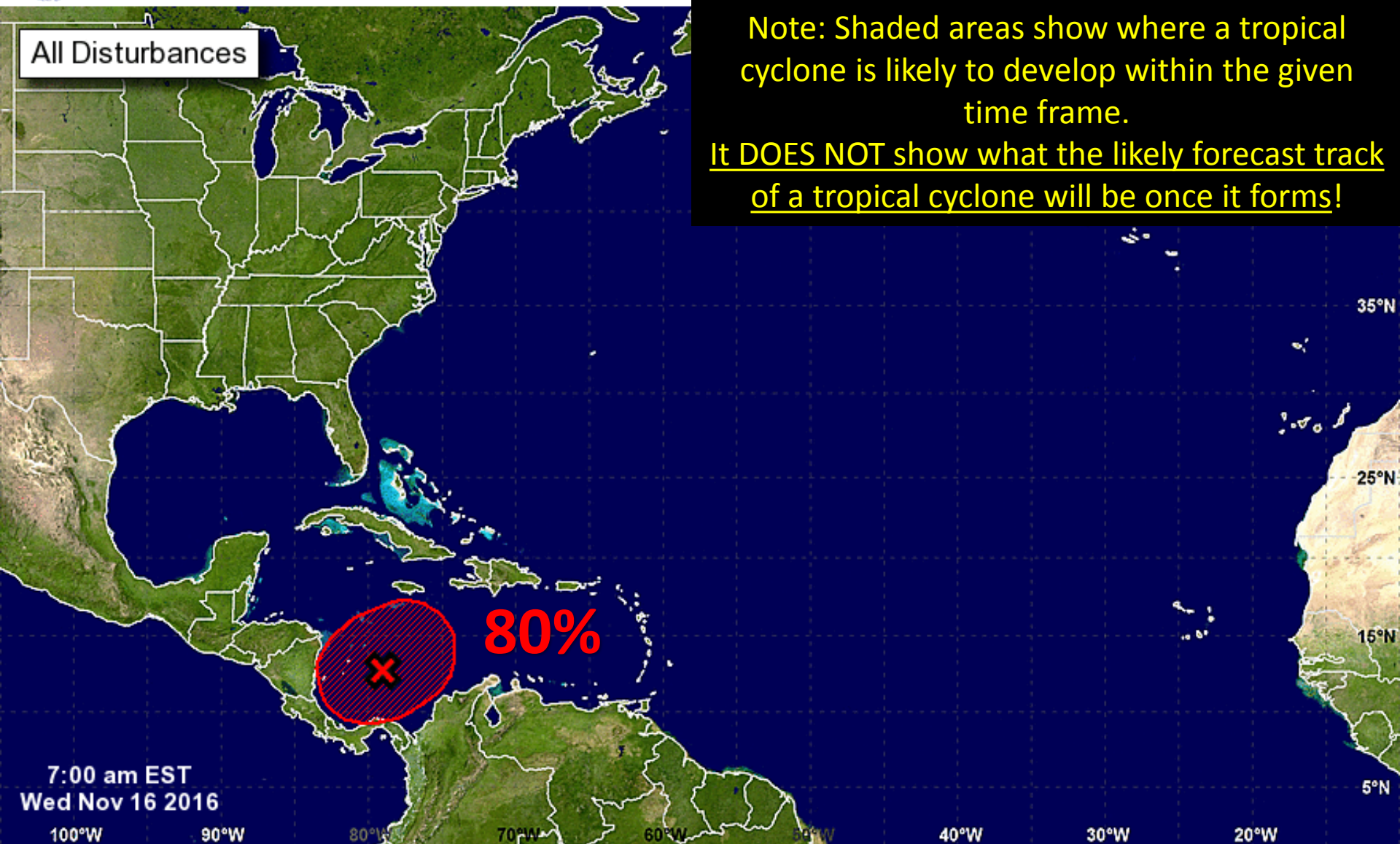
National Hurricane Center Miami, Florida



All Disturbances

Note: Shaded areas show where a tropical cyclone is likely to develop within the given time frame.

It DOES NOT show what the likely forecast track of a tropical cyclone will be once it forms!

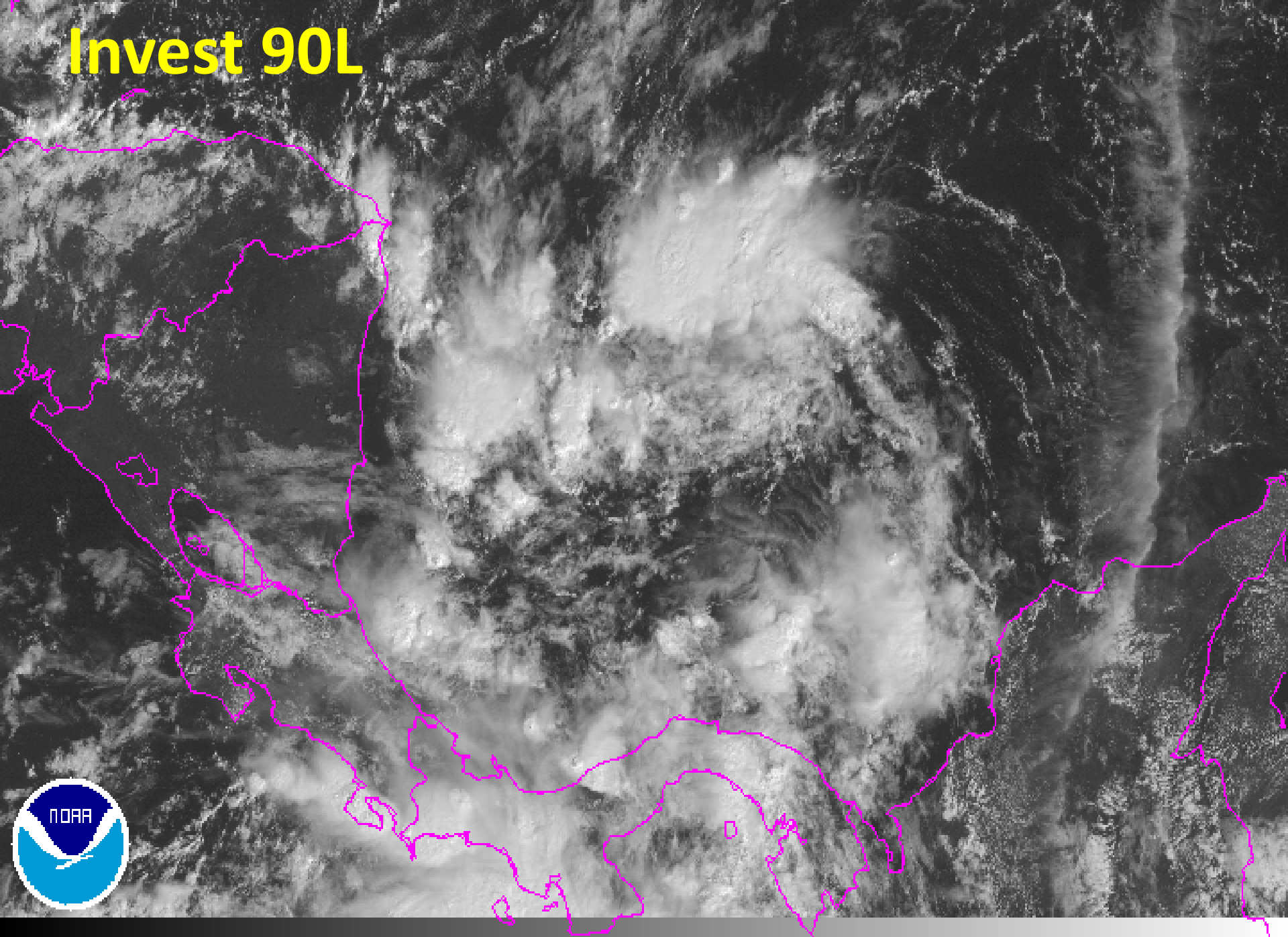


Tropical Cyclone Formation Potential for the Five-Day Period Ending at 7:00 am EST Mon Nov 21 2016

Chance of Cyclone Formation in Five Days: ■ Low < 40% ■ Medium 40-60% ■ High > 60%

X indicates current disturbance location; shading indicates potential formation area.

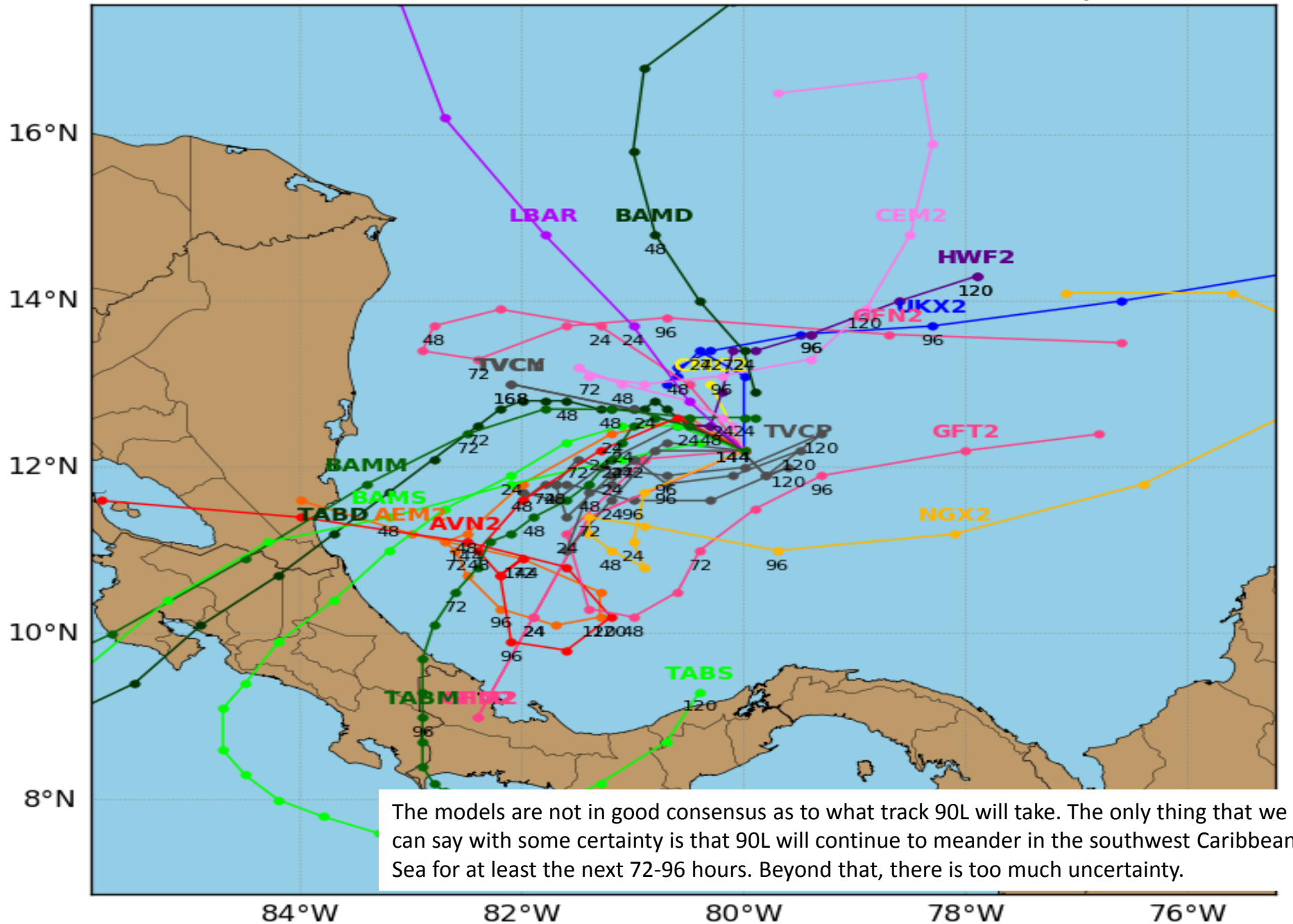
Invest 90L



Invest 90L Model Track Guidance

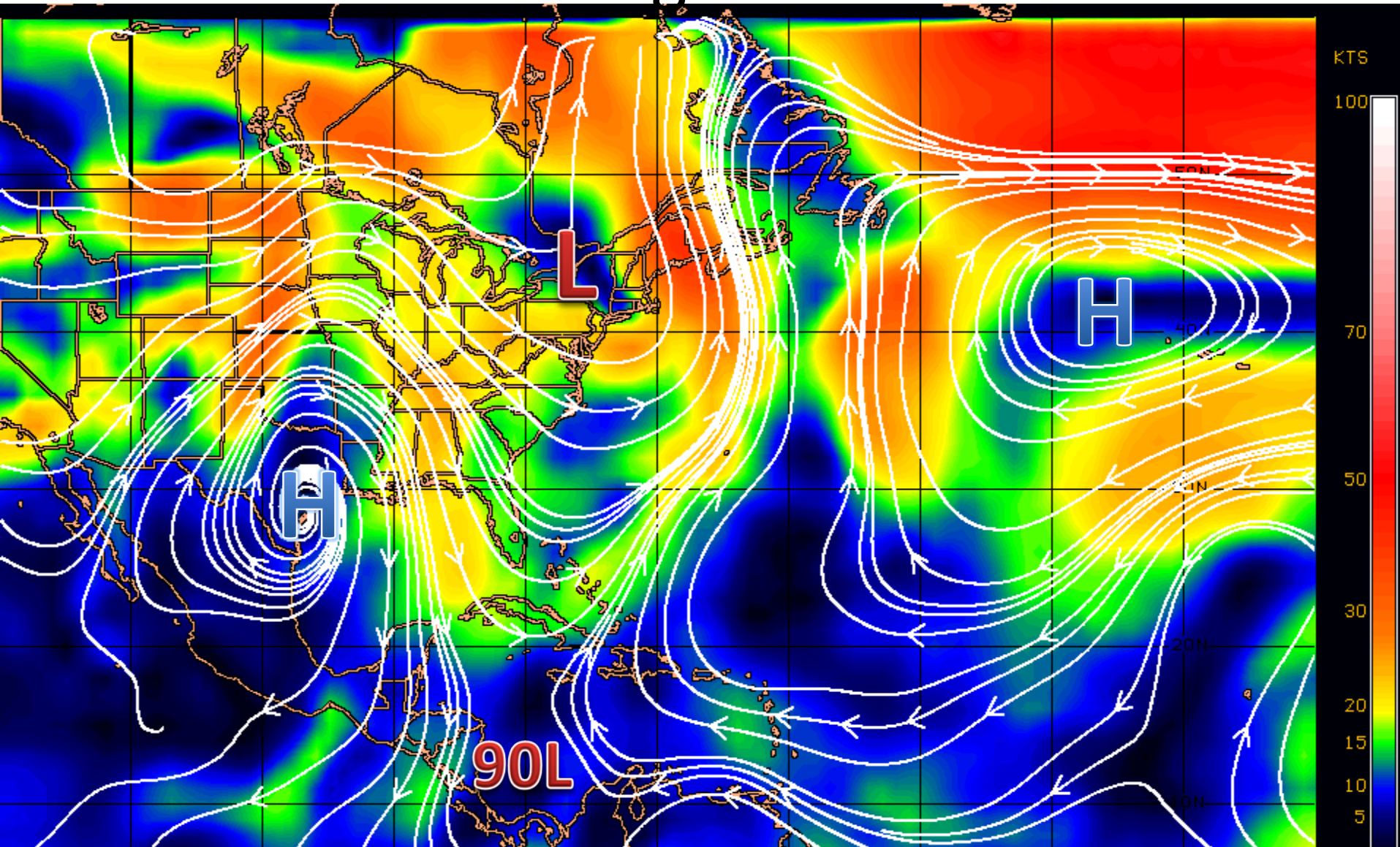
Initialized at 12z Nov 16 2016

Levi Cowan - tropicaltidbits.com



The models are not in good consensus as to what track 90L will take. The only thing that we can say with some certainty is that 90L will continue to meander in the southwest Caribbean Sea for at least the next 72-96 hours. Beyond that, there is too much uncertainty.

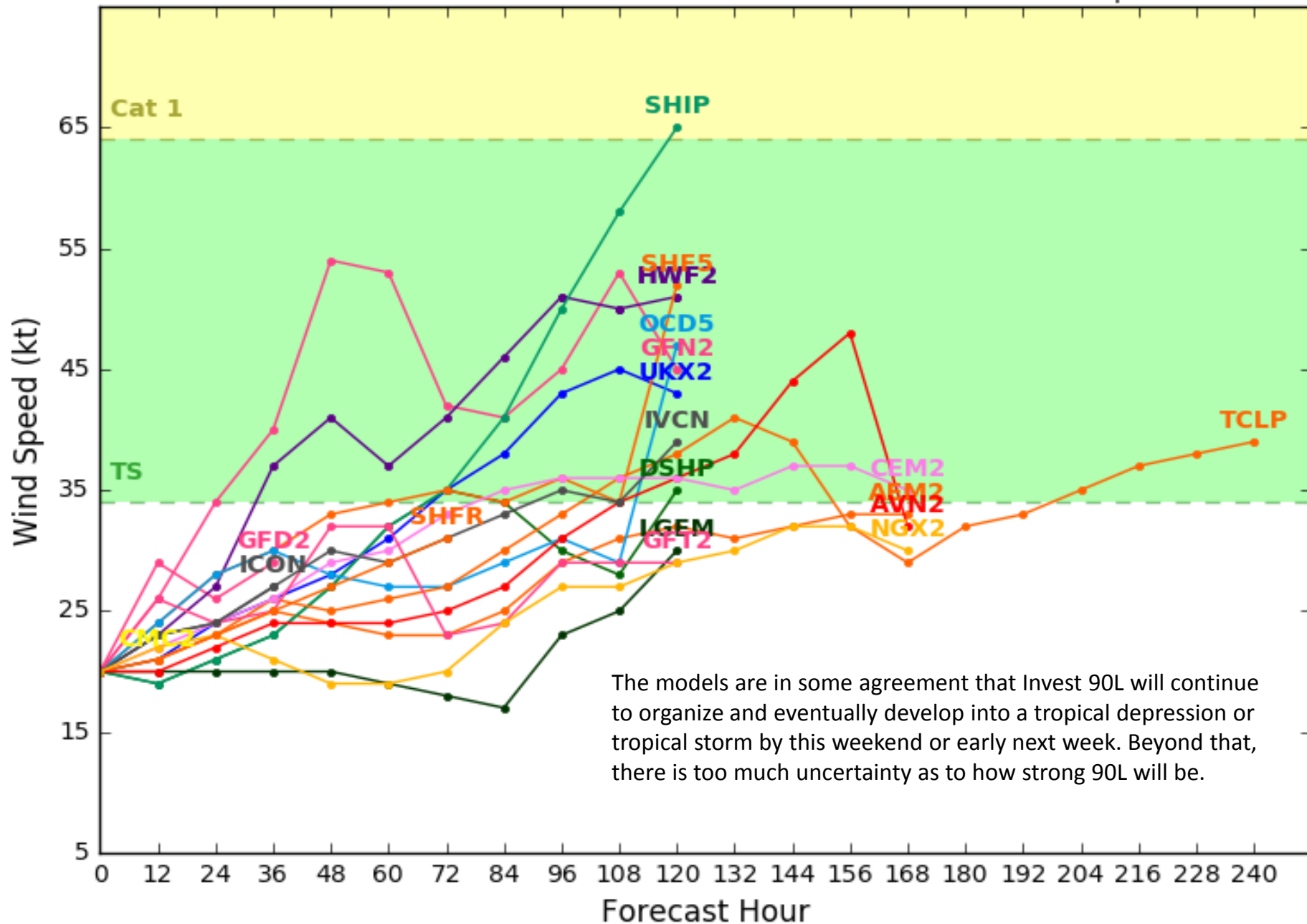
Steering Currents



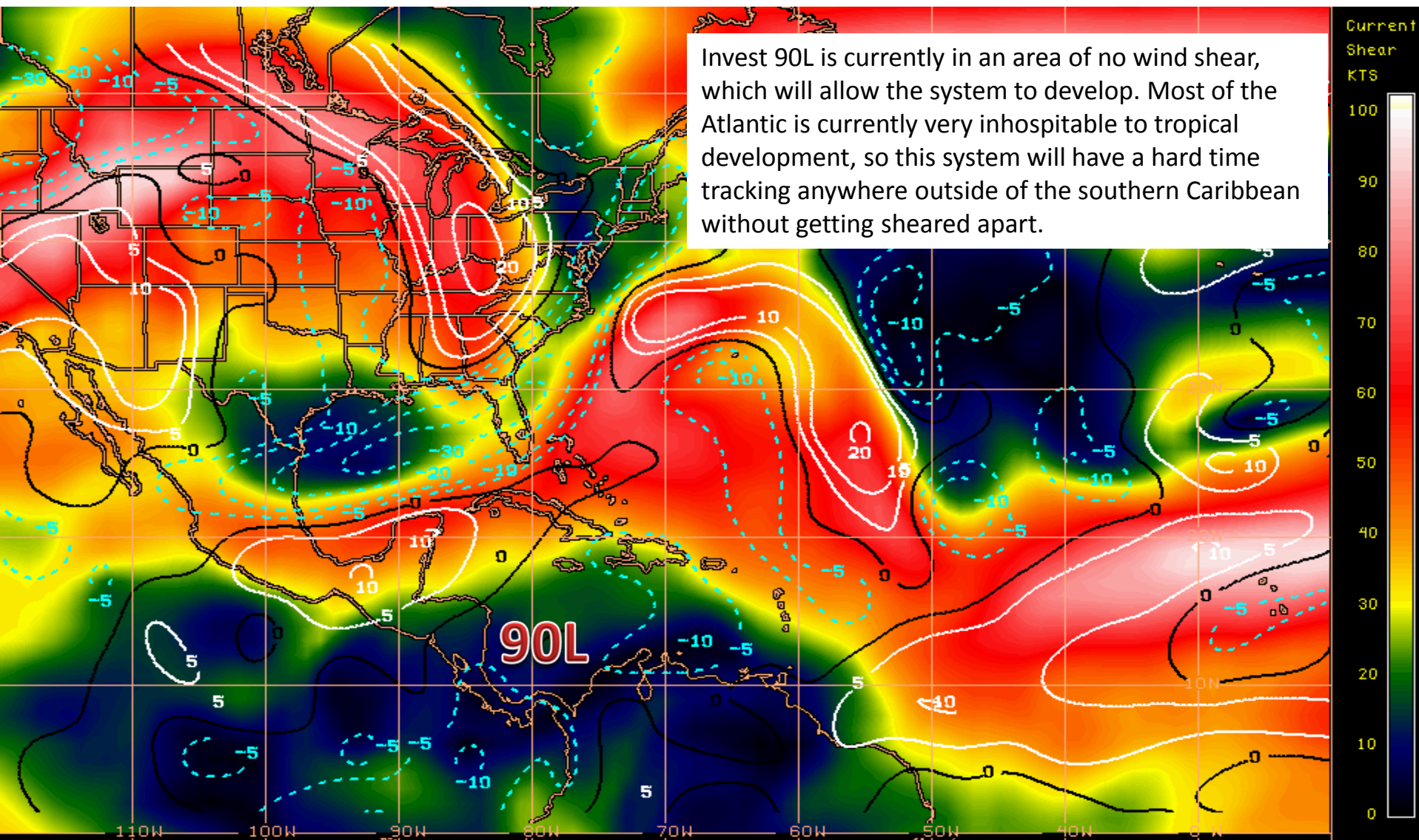
Invest 90L is located in the extreme southern part of the Caribbean Sea where steering currents are weak. The overlying conditions are not expected to change anytime soon, which is why forecast models have 90L meandering just off the coast of Nicaragua and Costa Rica for about the next 4-5 days.

Initialized at 12z Nov 16 2016

Levi Cowan - tropicaltidbits.com

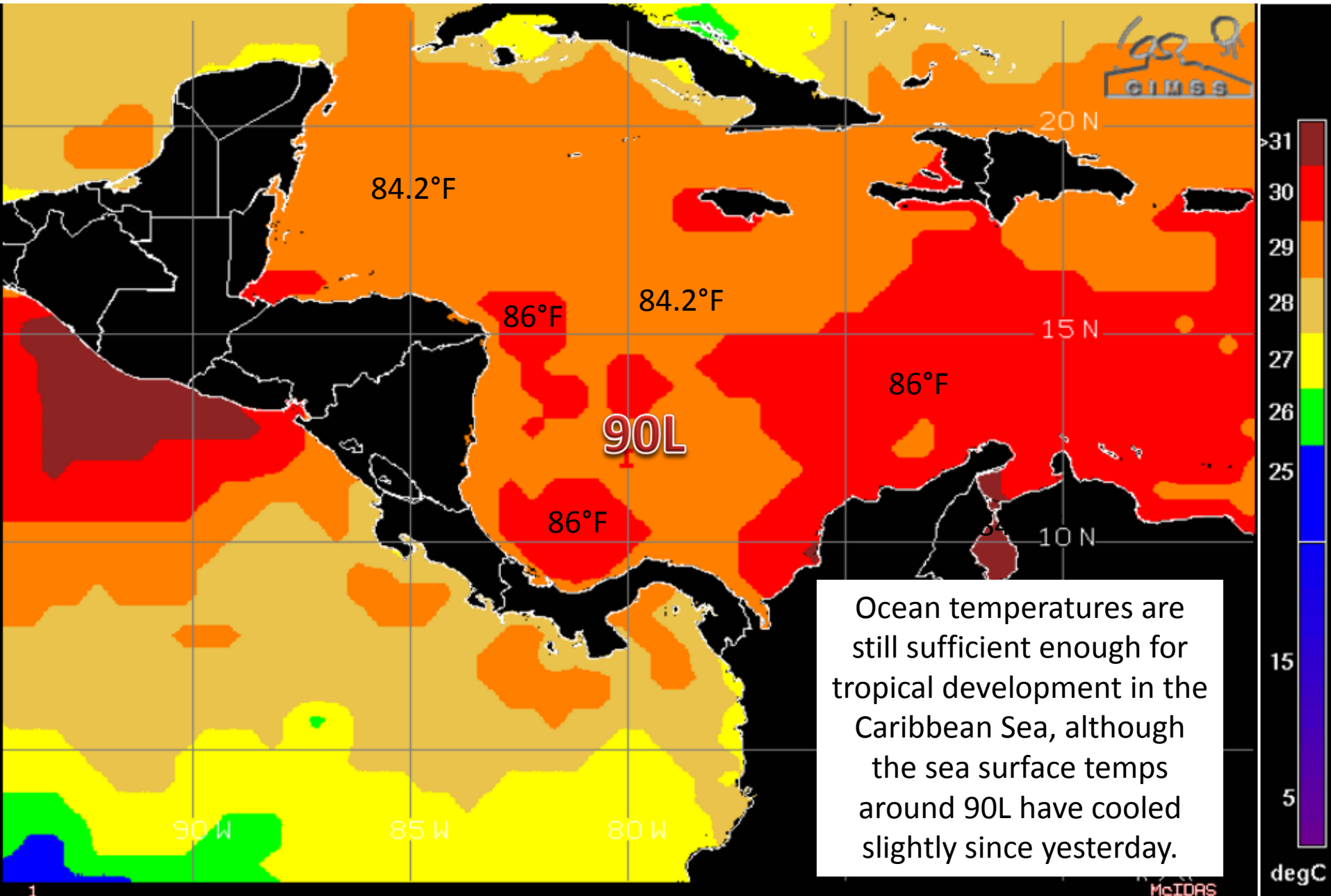


Current Wind Shear (shaded) and Shear Tendency (contours)



Shear Tendency (KTS) Over Past 24 Hours: Increasing ——— Decreasing - - - -

Sea Surface Temperatures near 90L



Tropical Summary:

- Invest 90L is a large area of disorganized cloudiness and showers over the southwestern Caribbean Sea that is associated with a broad low pressure system.
- Environmental conditions are expected to be conducive for slow development of this disturbance during the next several days, and a tropical depression is likely to form late this week or over the weekend while the low moves little.
- The system has a 30% (low) chance of development over the next 48 hours, and an 80% (high) chance of development through the next five days.
- 90L is forecast to meander in the southwest Caribbean due to weak steering currents for the next 3-5 days.
- It is still too early to tell what 90L's track will be beyond 96 hours. While the models are inconsistent in terms of track, the overall trend is that 90L will not move far from its current location in the southwestern Caribbean Sea.
- The intensity guidance is also inconsistent, however most models do have 90L becoming a tropical depression or weak tropical storm by this weekend or early next week.
- The next name on the Atlantic storm list is Otto.

Florida Outlook:

- It is too early to tell what, if any, impacts 90L will have on Florida.

Another briefing packet will be issued on Thursday morning. For more information, please visit the NHC website at www.nhc.noaa.gov.



TROPICAL UPDATE

Created by:

Kevin Rodriguez, Deputy State Meteorologist

Kevin.Rodriguez@em.myflorida.com

State Meteorological Support Unit

Florida Division of Emergency
Management