



TROPICAL UPDATE

11 AM EDT

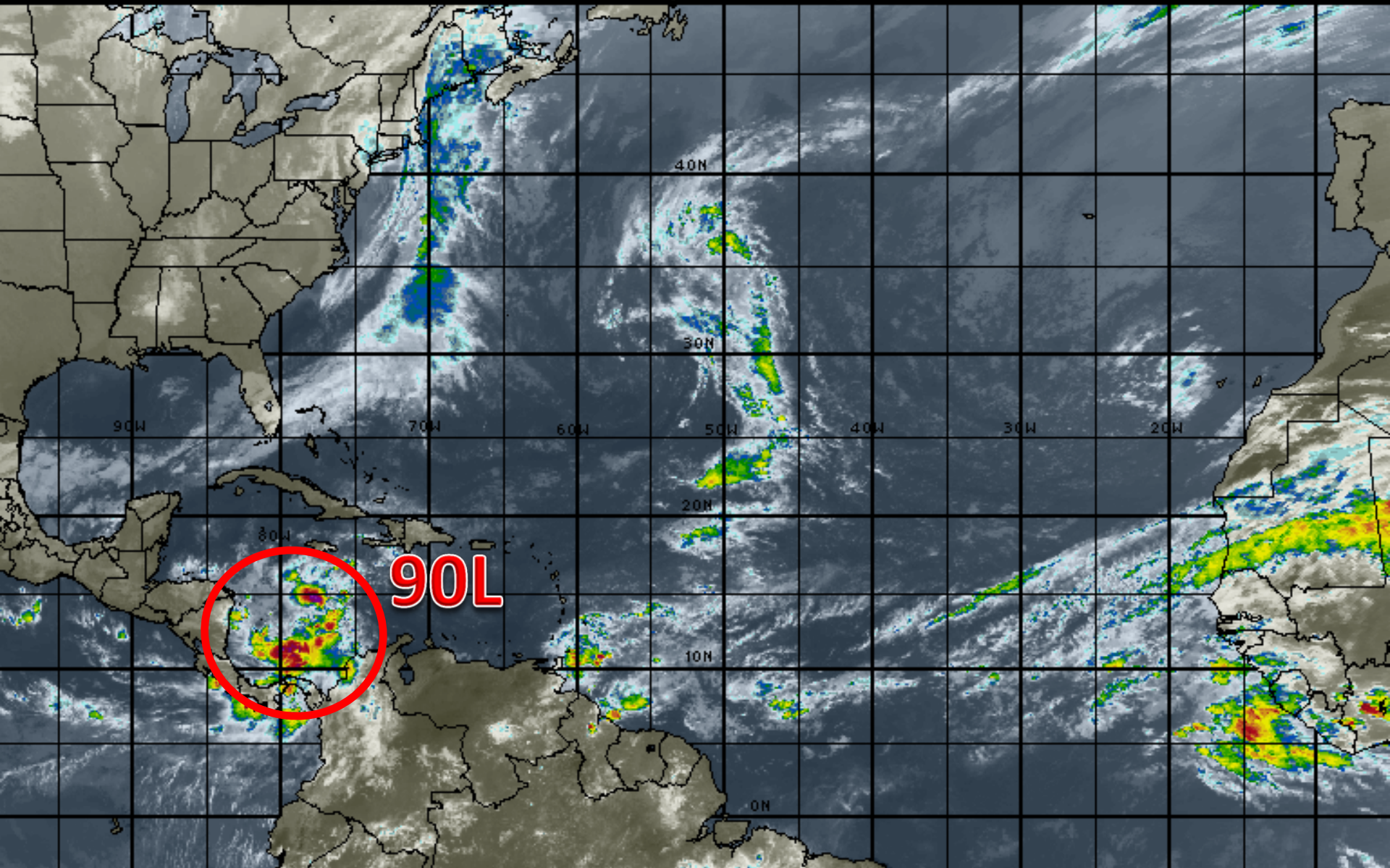
Tuesday, November 15, 2016

Invest 90L (80%)

This update is intended for government and emergency response officials, and is provided for informational and situational awareness purposes only. Forecast conditions are subject to change based on a variety of environmental factors. For additional information, or for any life safety concerns with an active weather event please contact your County Emergency Management or Public Safety Office, local National Weather Service forecast office or visit the National Hurricane Center website at www.nhc.noaa.gov.

Atlantic Basin Satellite Image

15:00 15-NOV-2016 GMT Copyright © 1998-2016 MSI Corporation <http://www.usi.com>





Five-Day Graphical Tropical Weather Outlook

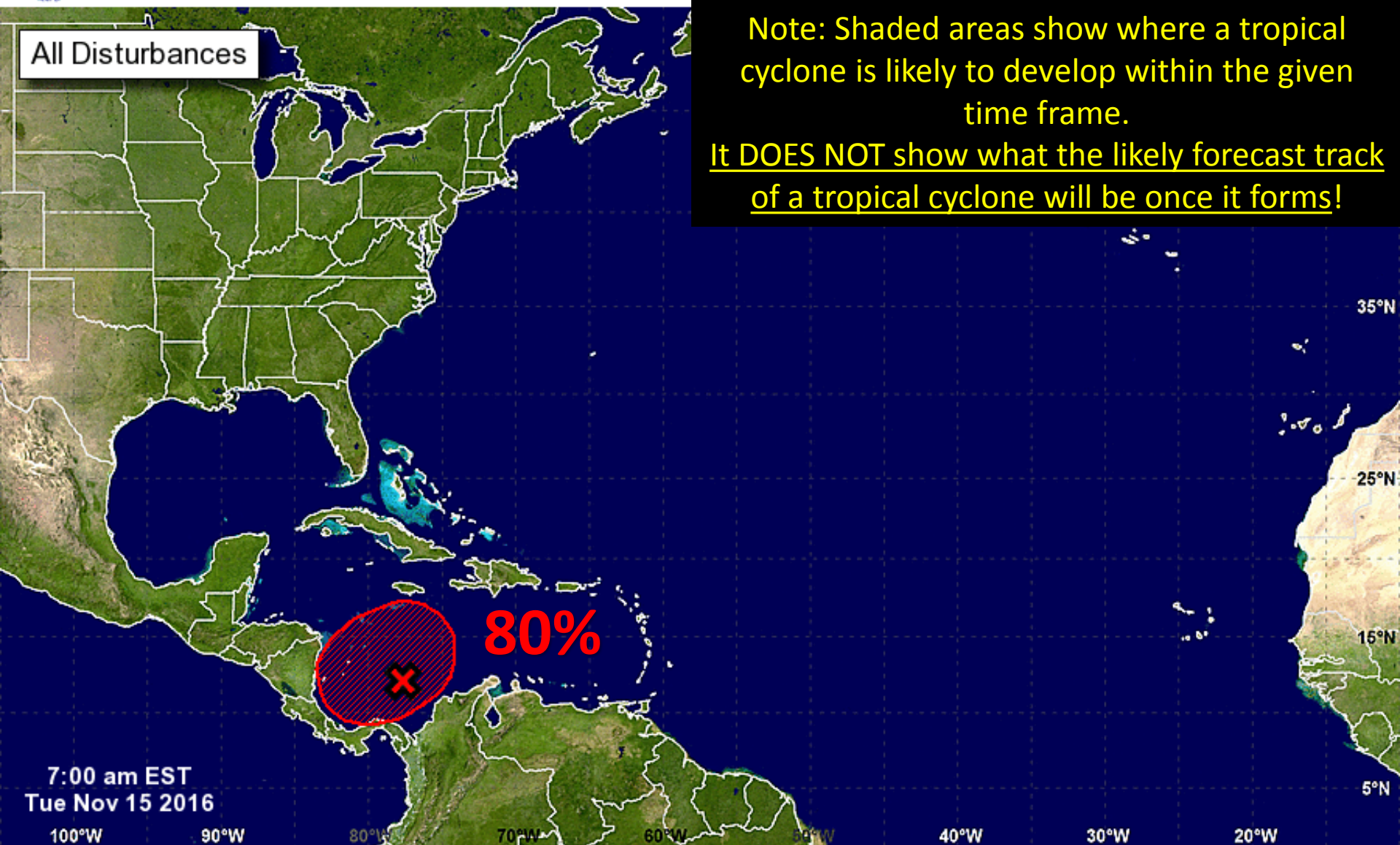
National Hurricane Center Miami, Florida



All Disturbances

Note: Shaded areas show where a tropical cyclone is likely to develop within the given time frame.

It DOES NOT show what the likely forecast track of a tropical cyclone will be once it forms!



Tropical Cyclone Formation Potential for the Five-Day Period Ending at 7:00 am EST Sun Nov 20 2016

Chance of Cyclone Formation in Five Days: ■ Low < 40% ■ Medium 40-60% ■ High > 60%

X indicates current disturbance location; shading indicates potential formation area.

Invest 90L

7 AM Tue Nov 15 2016

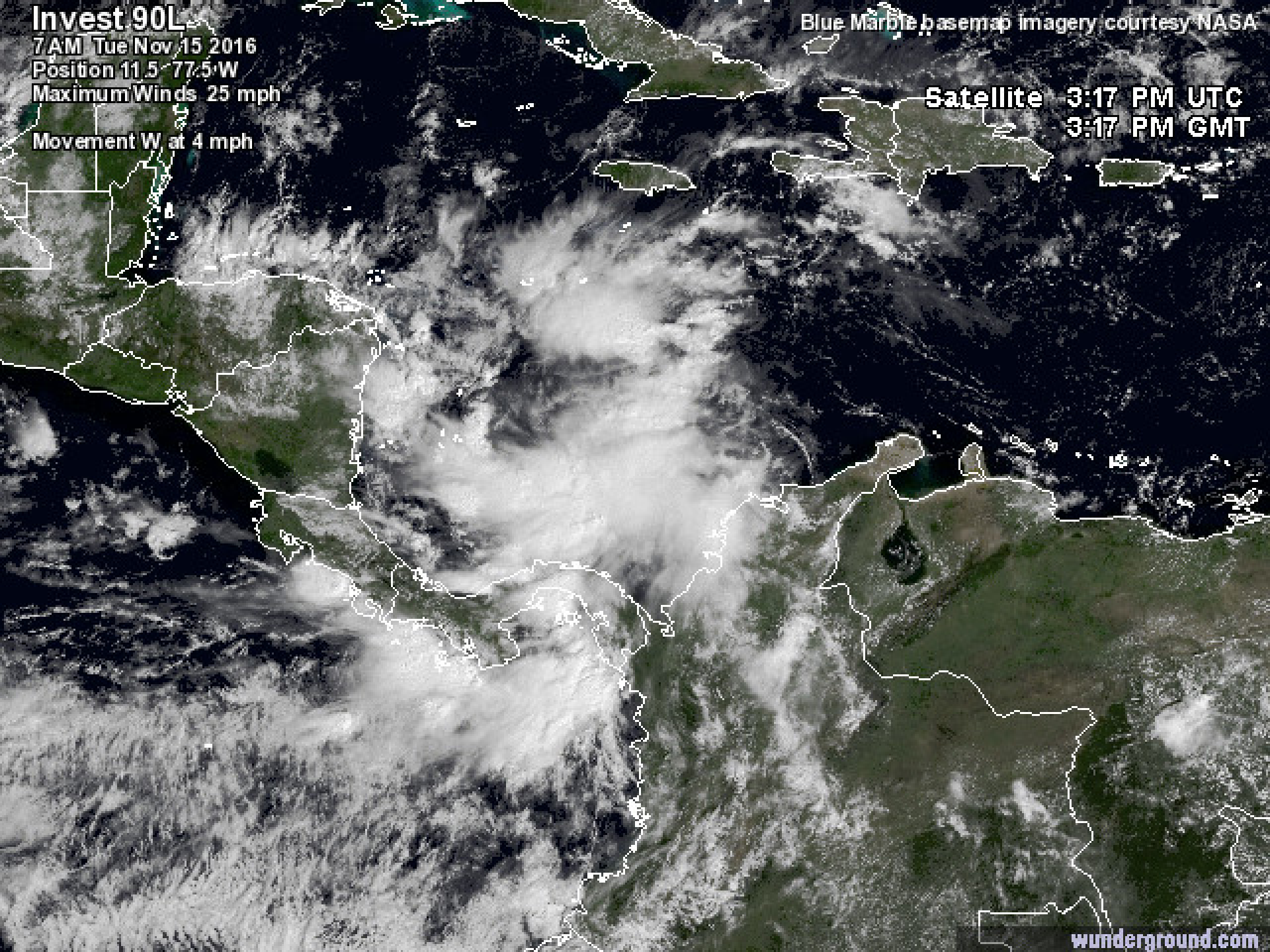
Position 11.5°N 77.5°W

Maximum Winds 25 mph

Movement W at 4 mph

Blue Marble basemap imagery courtesy NASA

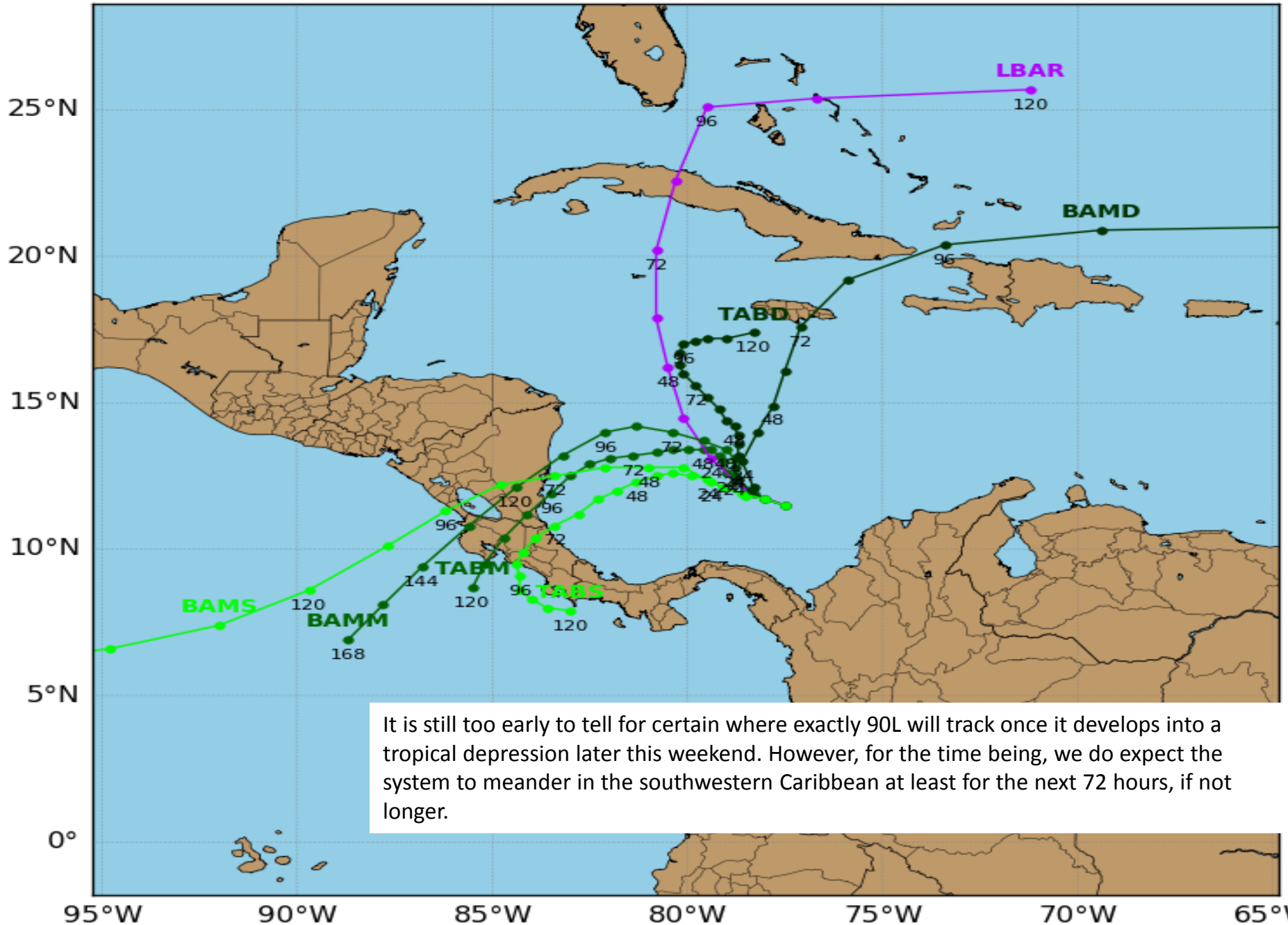
Satellite 3:17 PM UTC
3:17 PM GMT



Invest 90L Model Track Guidance

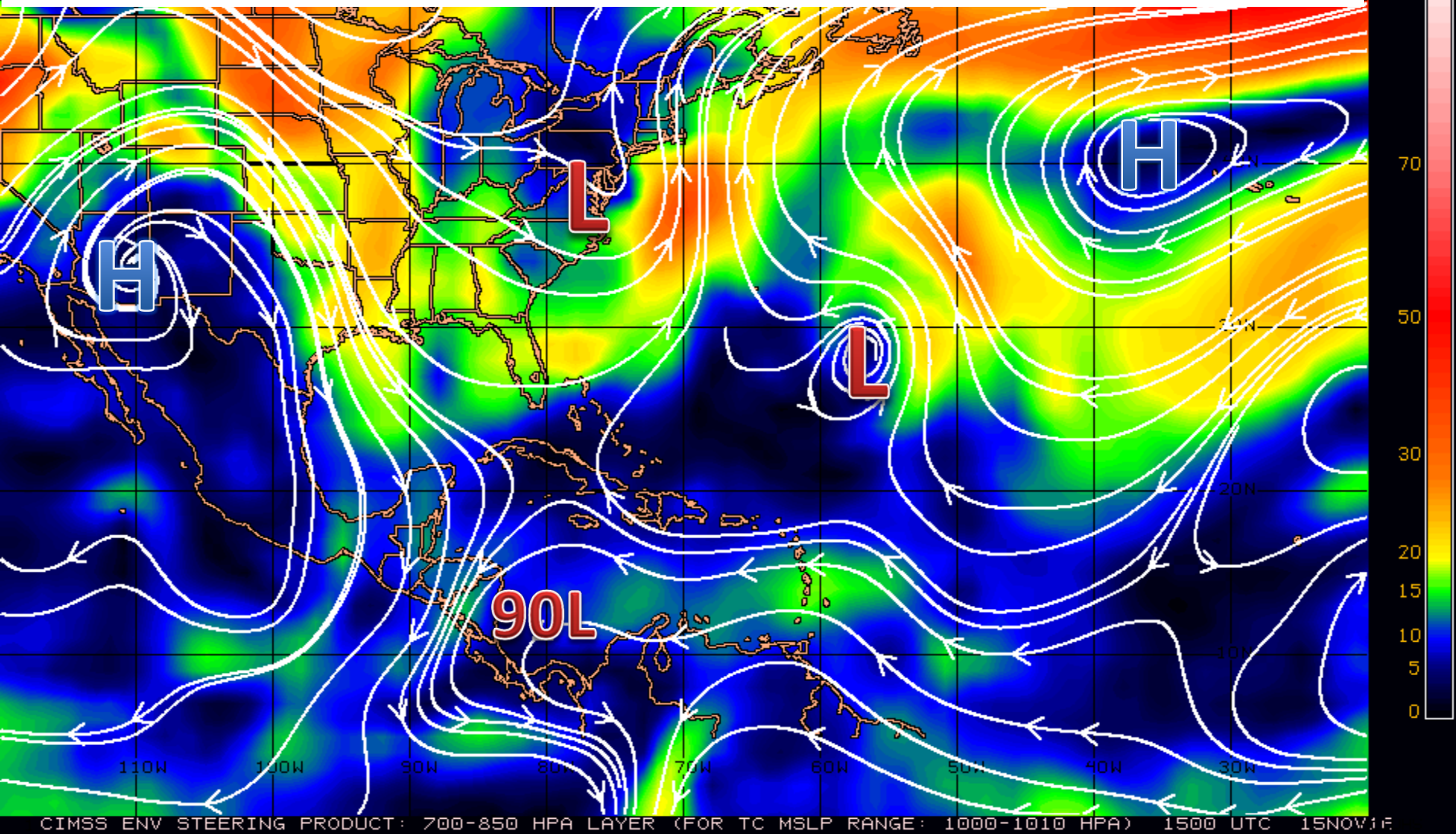
Initialized at 12z Nov 15 2016

Levi Cowan - tropicaltidbits.com

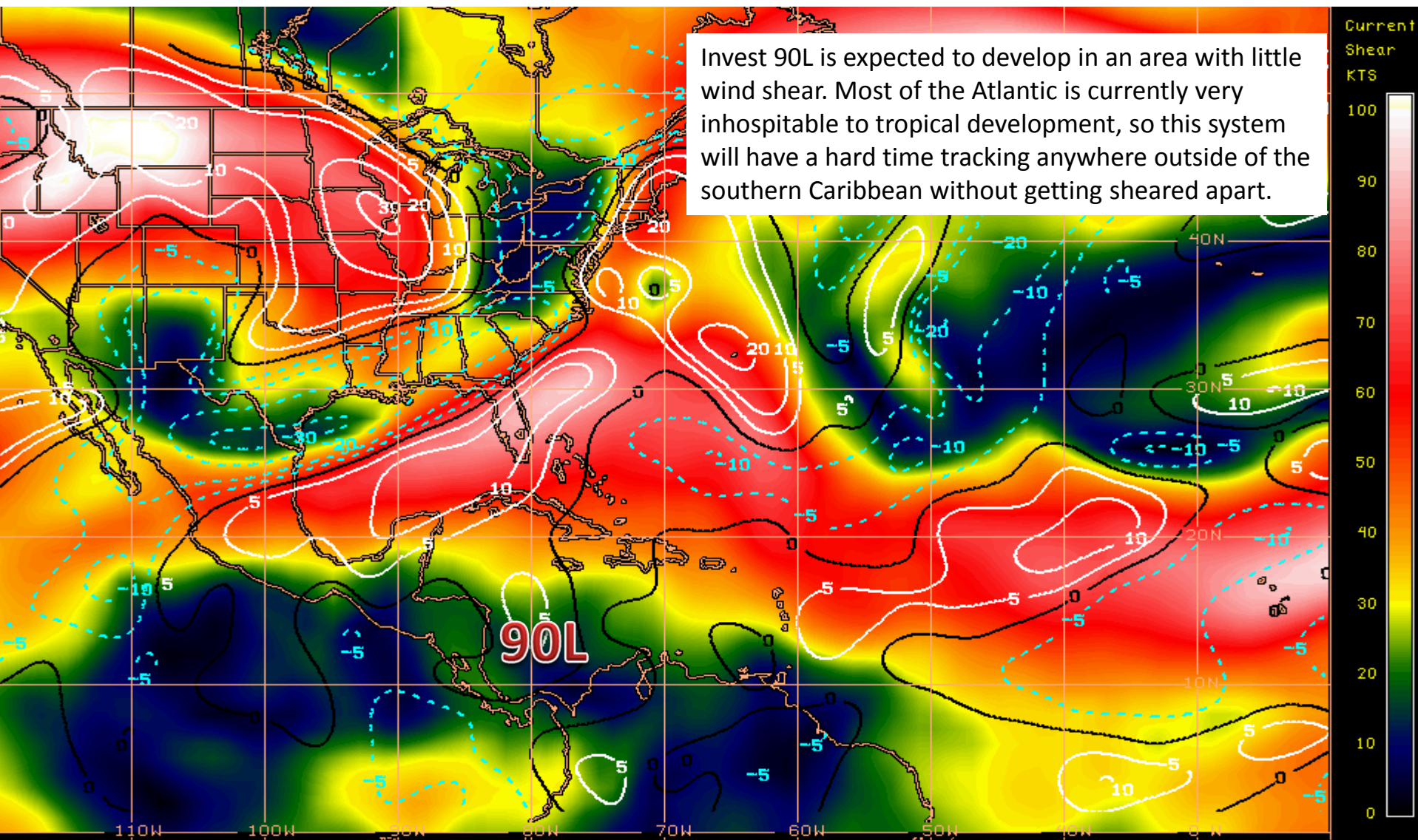


Steering Currents

Invest 90L is located in the extreme southern part of the Caribbean Sea just north of Costa Rica. At this time, the system is an open wave with little organization to it. However, conditions are expected to become favorable for tropical development by the end of the week. As of now, we do not know what the general steering patterns in the area will be, so we will have to wait a few days to have a better gist of the steering patterns.

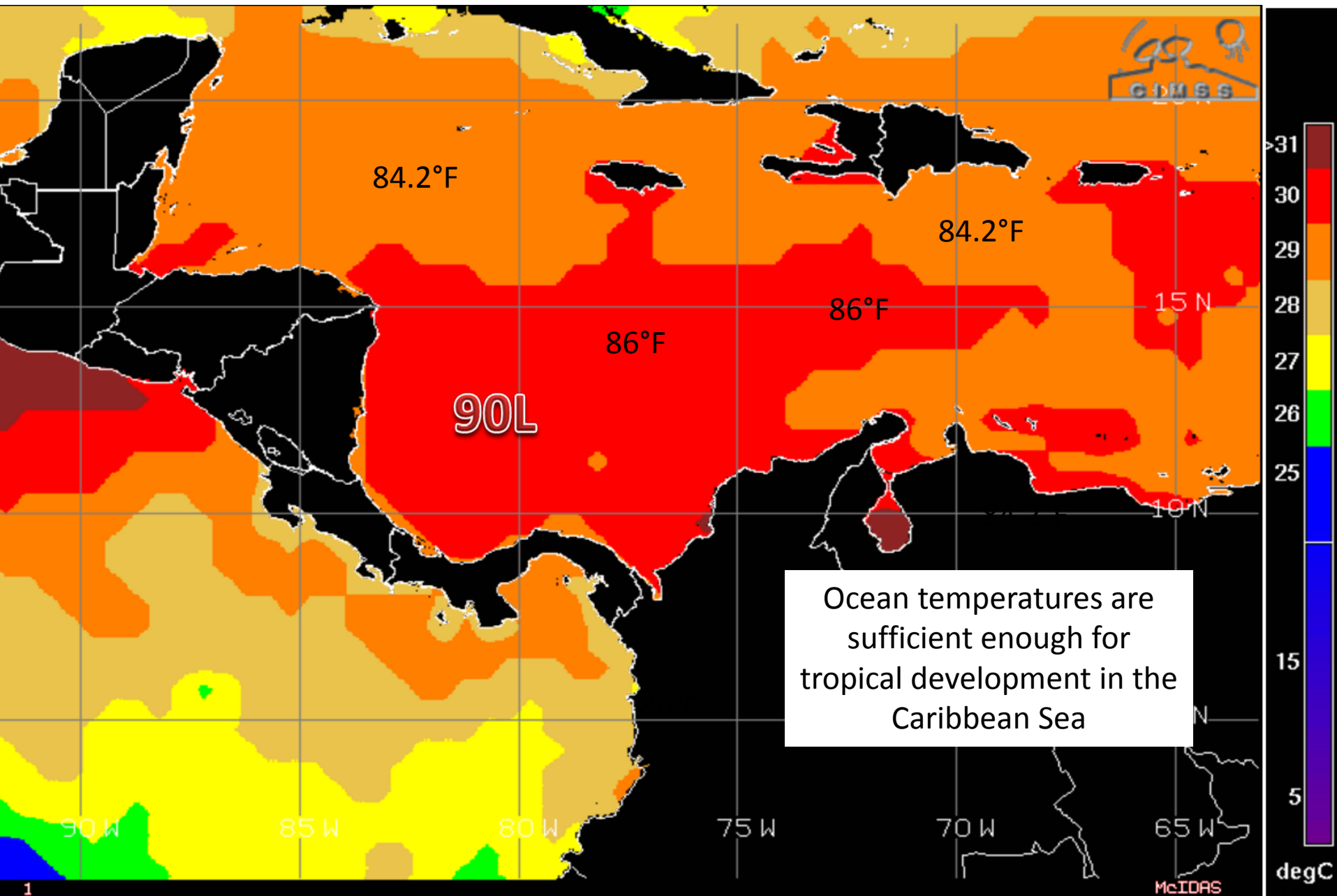


Current Wind Shear (shaded) and Shear Tendency (contours)



Shear Tendency (KTS) Over Past 24 Hours: Increasing ——— Decreasing - - - -

Sea Surface Temperatures near 90L



Tropical Summary:

- Invest Area 90L is a large area cloudiness and thunderstorms associated with a broad low pressure system located over the southwestern Caribbean Sea.
- Environmental conditions are expected to be conducive for slow development of this disturbance during the next several days, and a tropical depression is likely to form by late this week or over the weekend while the low drifts northward or northeastward.
- The system has a 10% (low) chance of development over the next 48 hours, and an 80% (high) chance of development through the next five days.
- 90L is forecast to meander in the southwest Caribbean due to weak steering currents for the next three days or so.
- It is still too early to tell what 90L's track and strength will be beyond 72-96 hours. A clearer picture will start to emerge in the coming days as more models pick up on this new Invest.
- The next name on the Atlantic storm list is Otto.

Florida Outlook:

- It is too early to tell what, if any, impacts 90L will have on Florida.

Another briefing packet will be issued on Wednesday morning. For more information, please visit the NHC website at www.nhc.noaa.gov.



TROPICAL UPDATE

Created by:

Kevin Rodriguez, Deputy State Meteorologist

Kevin.Rodriguez@em.myflorida.com

State Meteorological Support Unit

Florida Division of Emergency
Management