



# **TROPICAL UPDATE**

**11 AM EDT**

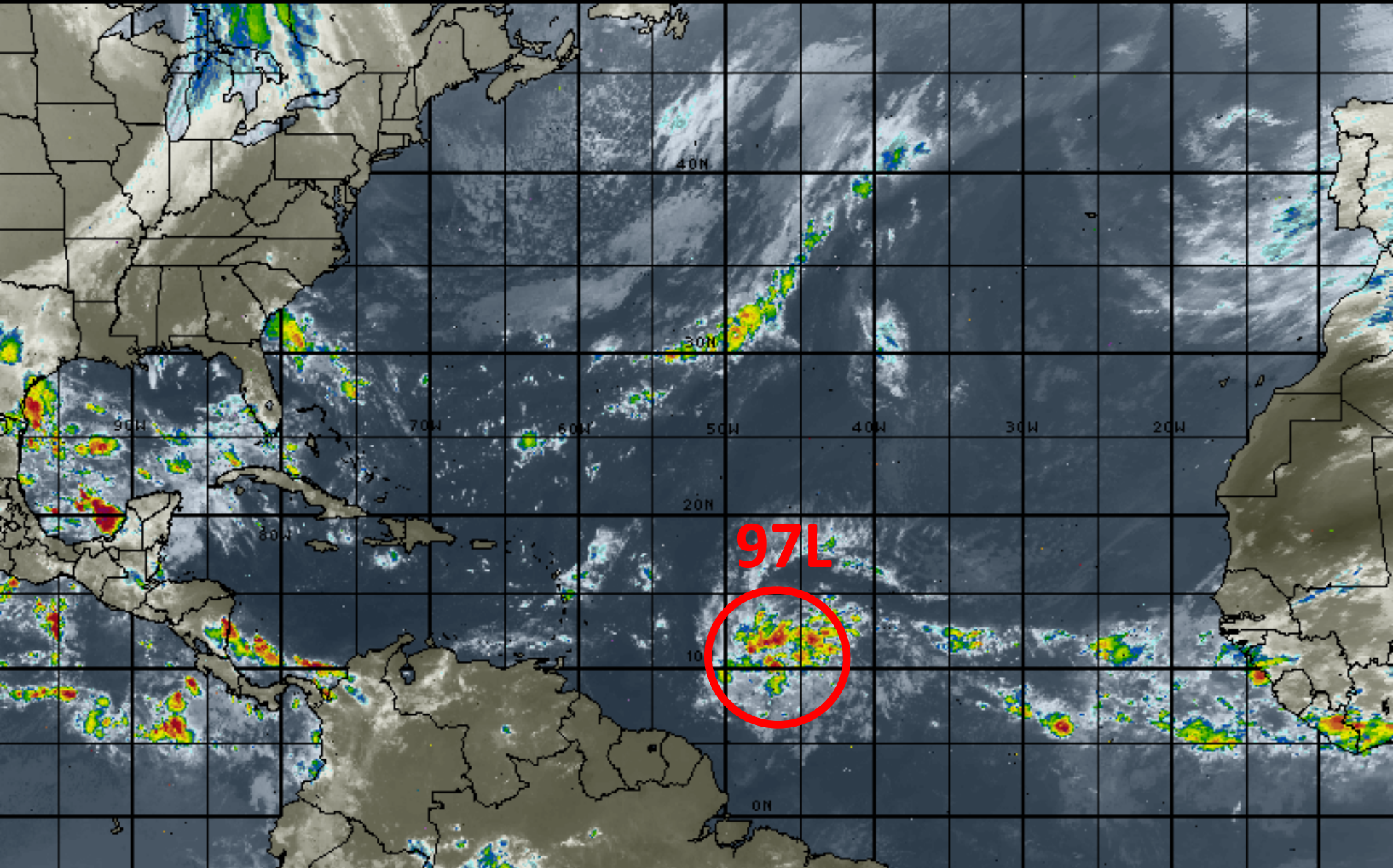
**Monday, September 26, 2016**

**Invest 97L (90%)**

**This update is intended for government and emergency response officials, and is provided for informational and situational awareness purposes only. Forecast conditions are subject to change based on a variety of environmental factors. For additional information, or for any life safety concerns with an active weather event please contact your County Emergency Management or Public Safety Office, local National Weather Service forecast office or visit the National Hurricane Center website at [www.nhc.noaa.gov](http://www.nhc.noaa.gov).**

# Atlantic Basin Satellite Image

12:00 26-SEP-2016 GMT ©Copyright WSI Corporation <http://www.wsi.com>







# Two-Day Graphical Tropical Weather Outlook

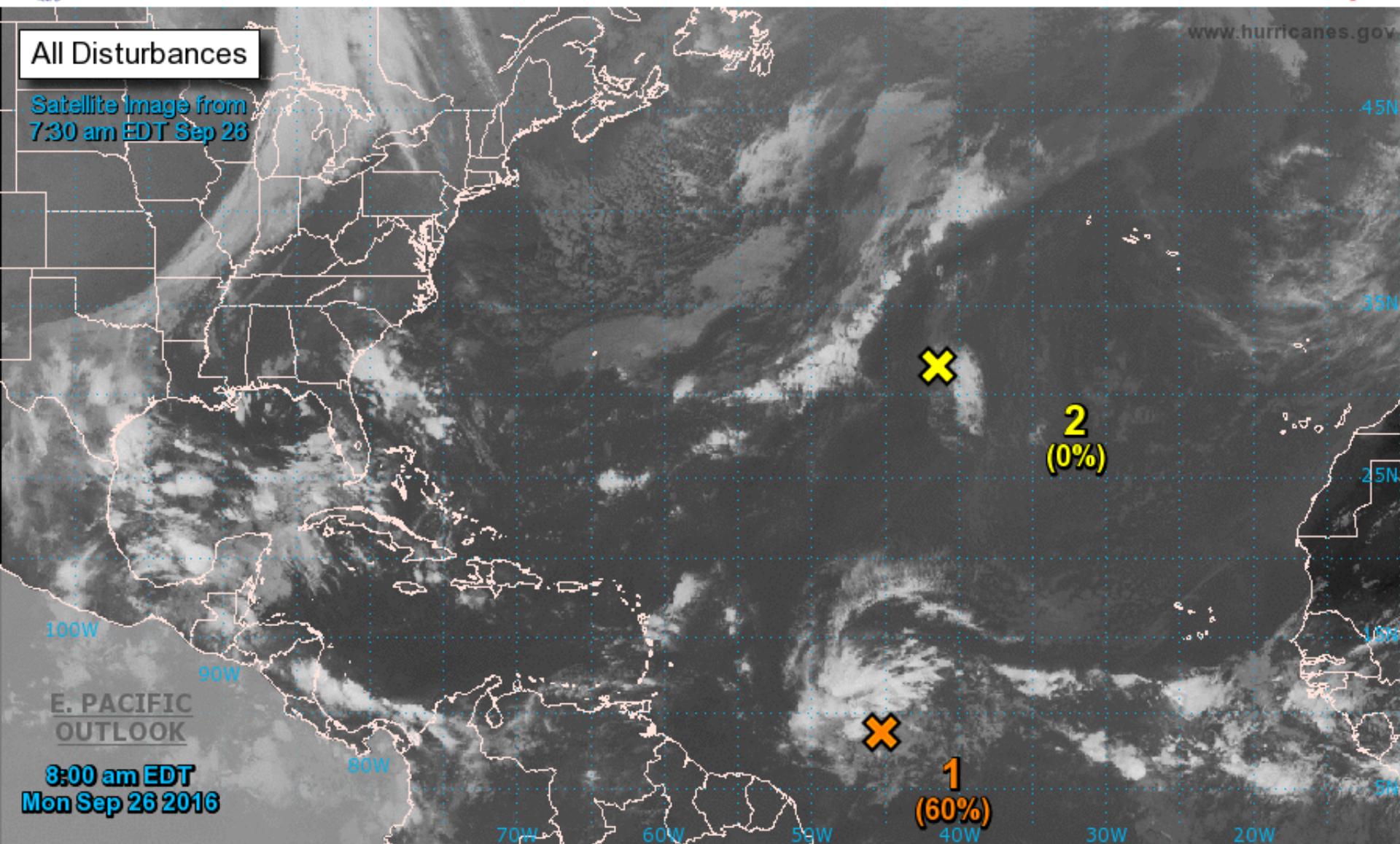
National Hurricane Center Miami, Florida



www.hurricanes.gov

All Disturbances

Satellite Image from  
7:30 am EDT Sep 26



8:00 am EDT  
Mon Sep 26 2016

Current Disturbances and Two-Day Cyclone Formation Chance: < 40% 40-60% > 60%

Tropical or Sub-Tropical Cyclone: Depression Storm Hurricane

Post-Tropical Cyclone Remnants





# Five-Day Graphical Tropical Weather Outlook

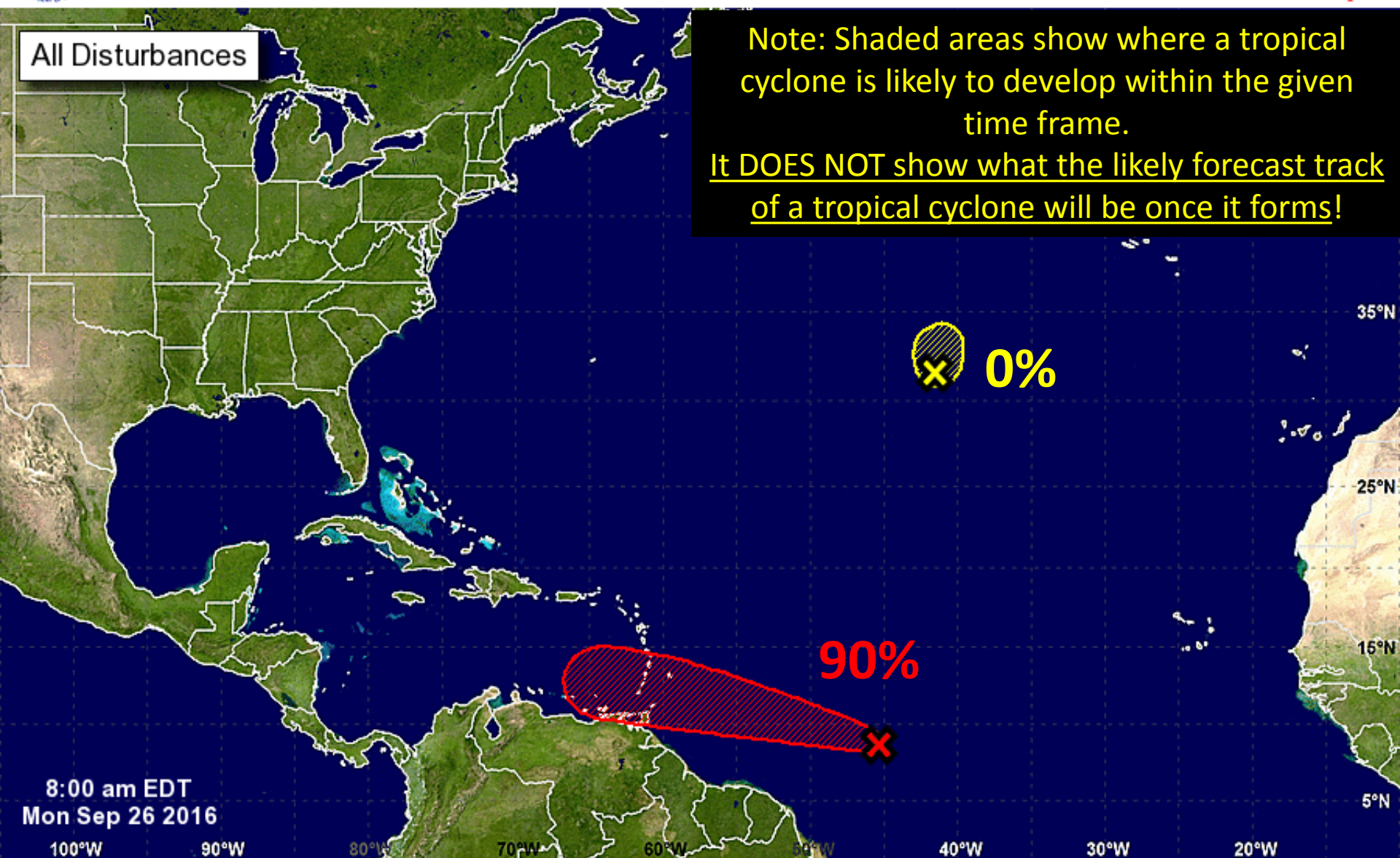
National Hurricane Center Miami, Florida



All Disturbances

Note: Shaded areas show where a tropical cyclone is likely to develop within the given time frame.

It DOES NOT show what the likely forecast track of a tropical cyclone will be once it forms!



Tropical Cyclone Formation Potential for the Five-Day Period Ending at 8:00 am EDT Sat Oct 1 2016

Chance of Cyclone Formation in Five Days: ■ Low < 40% ■ Medium 40-60% ■ High > 60%

X indicates current disturbance location; shading indicates potential formation area.

# Invest 97L

8 AM Mon Sep 26 2016

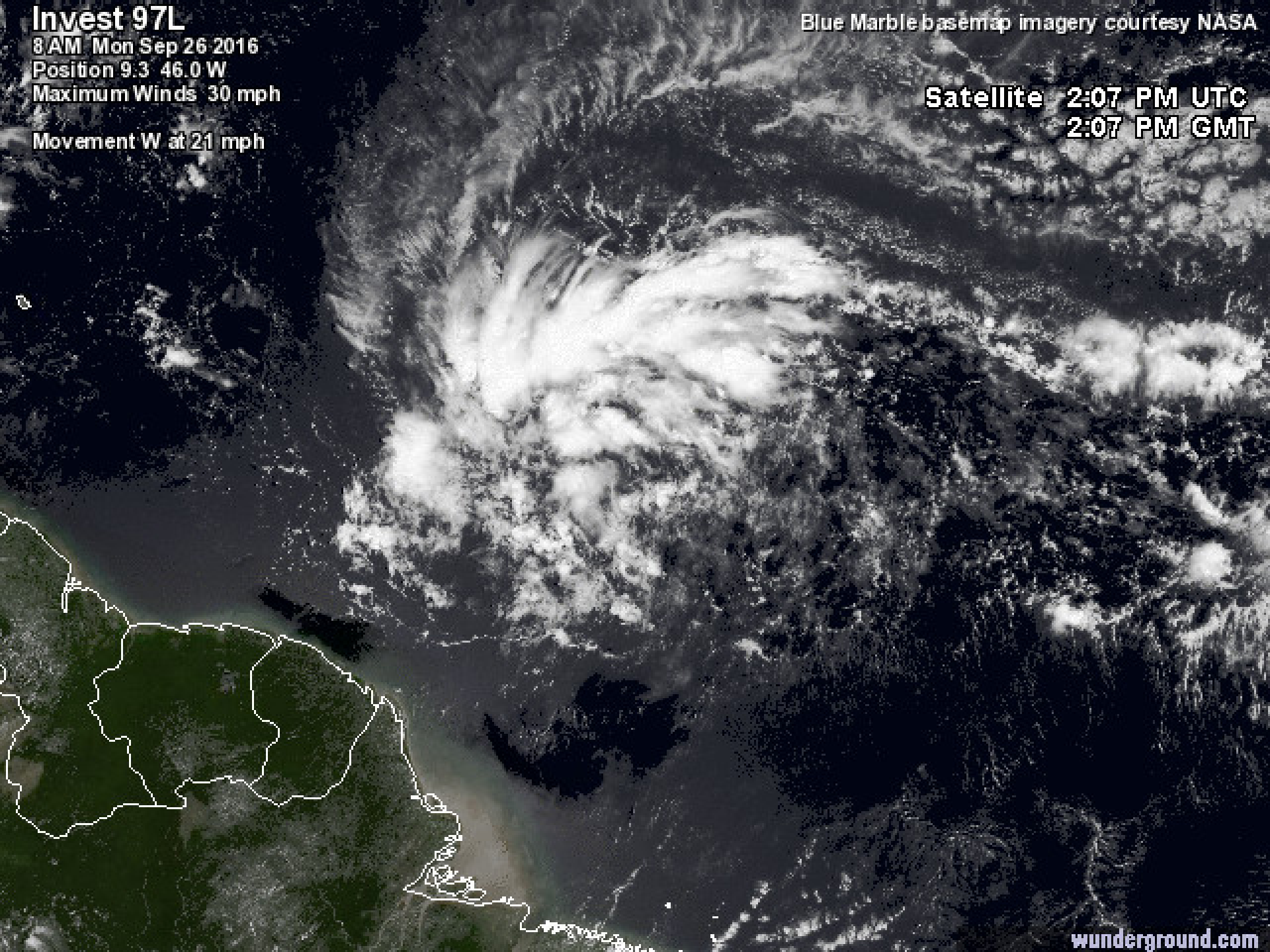
Position 9.3 46.0 W

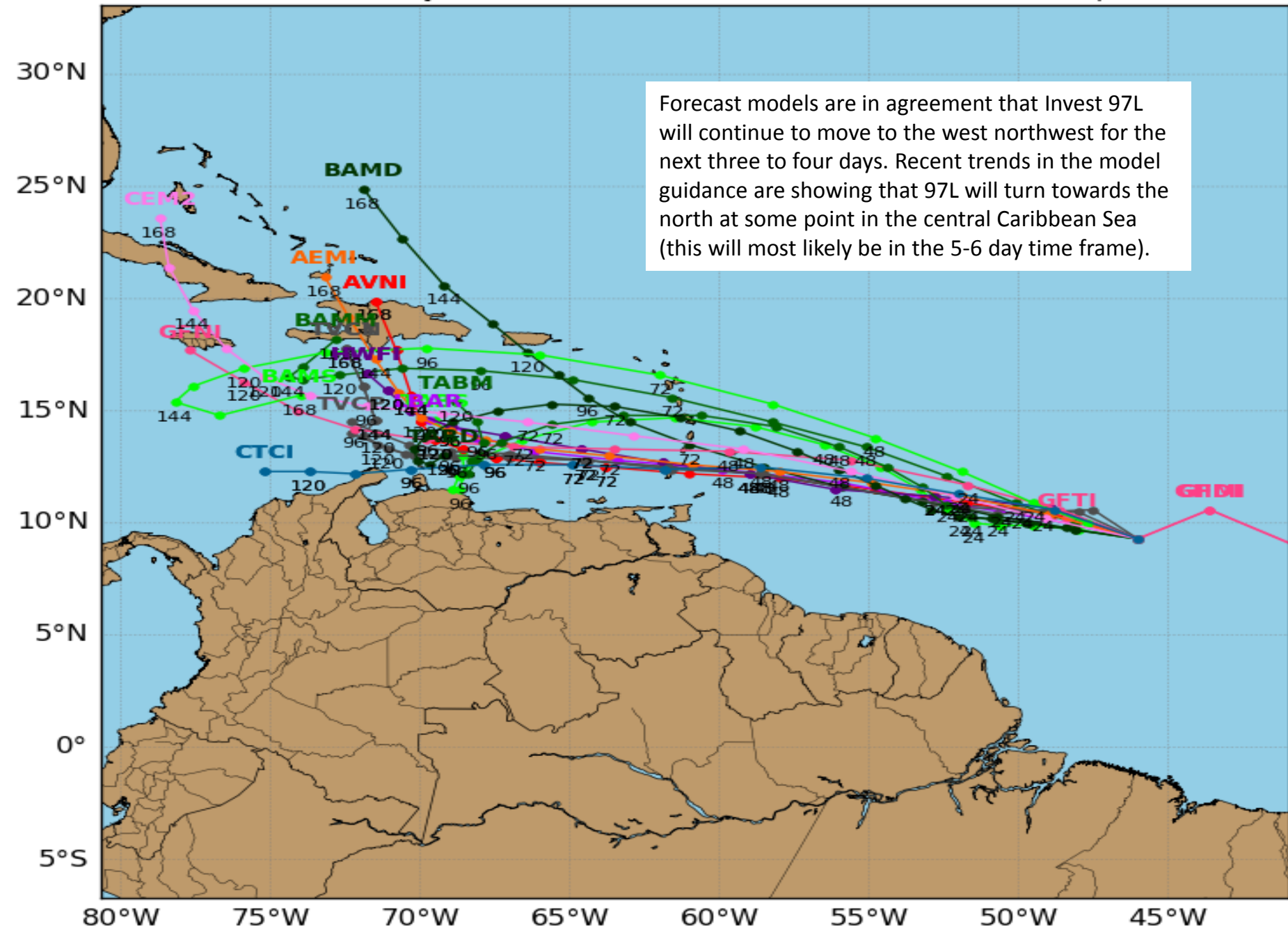
Maximum Winds 30 mph

Movement W at 21 mph

Blue Marble basemap imagery courtesy NASA

Satellite 2:07 PM UTC  
2:07 PM GMT



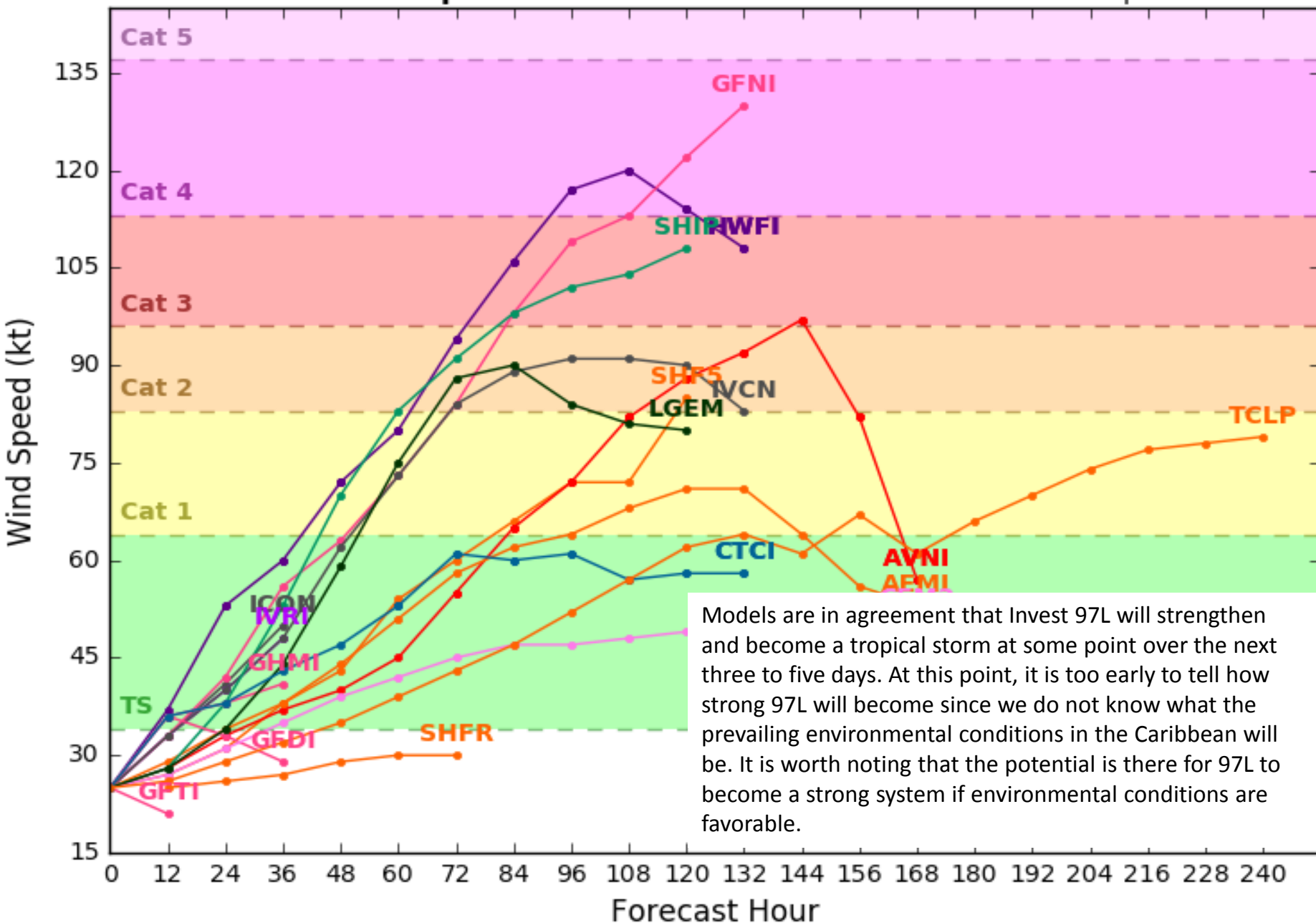
Levi Cowan - [tropicaltidbits.com](http://tropicaltidbits.com)



# Invest 97L Model Intensity Guidance

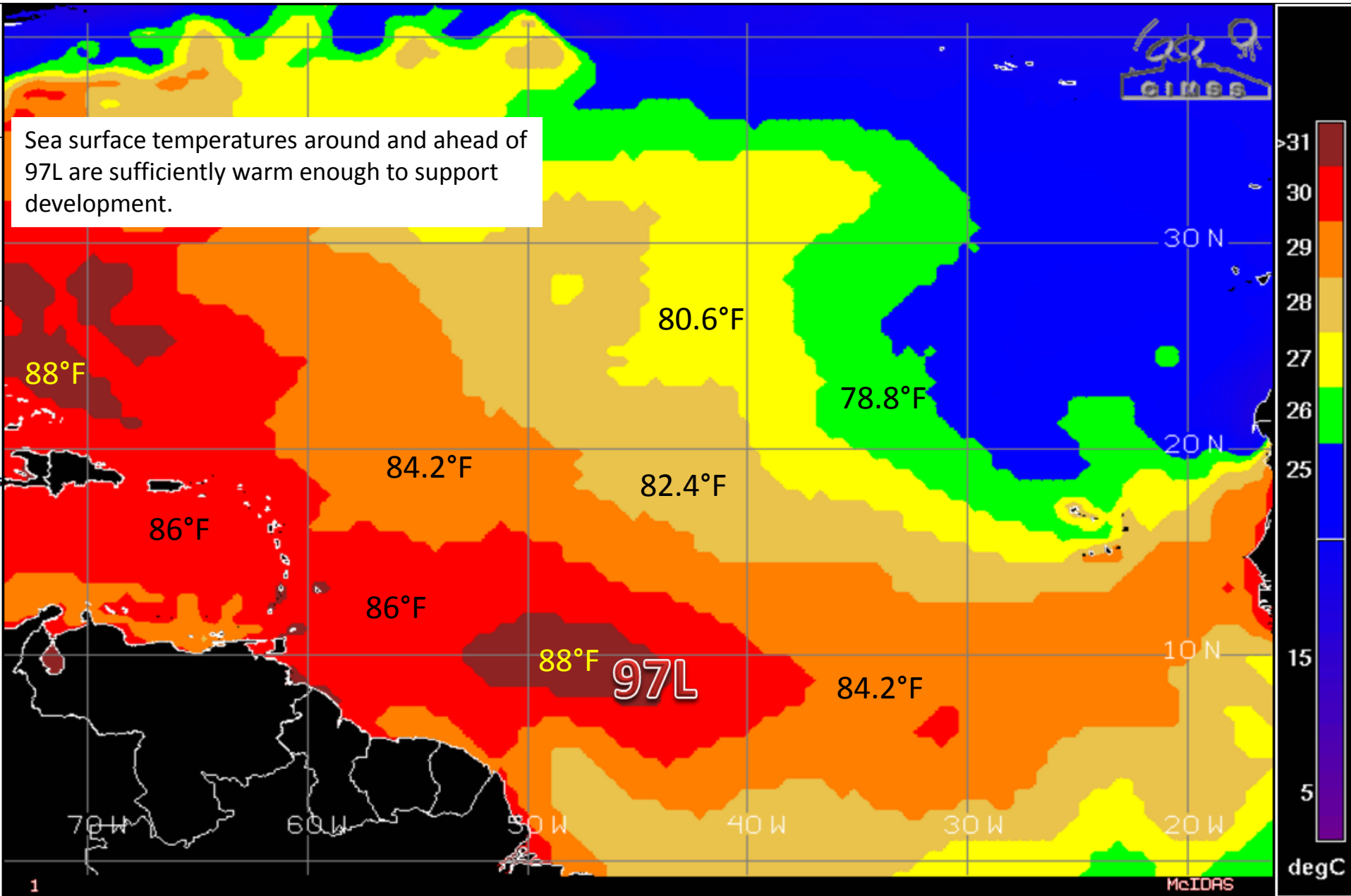
Initialized at 12z Sep 26 2016

Levi Cowan - tropicaltidbits.com



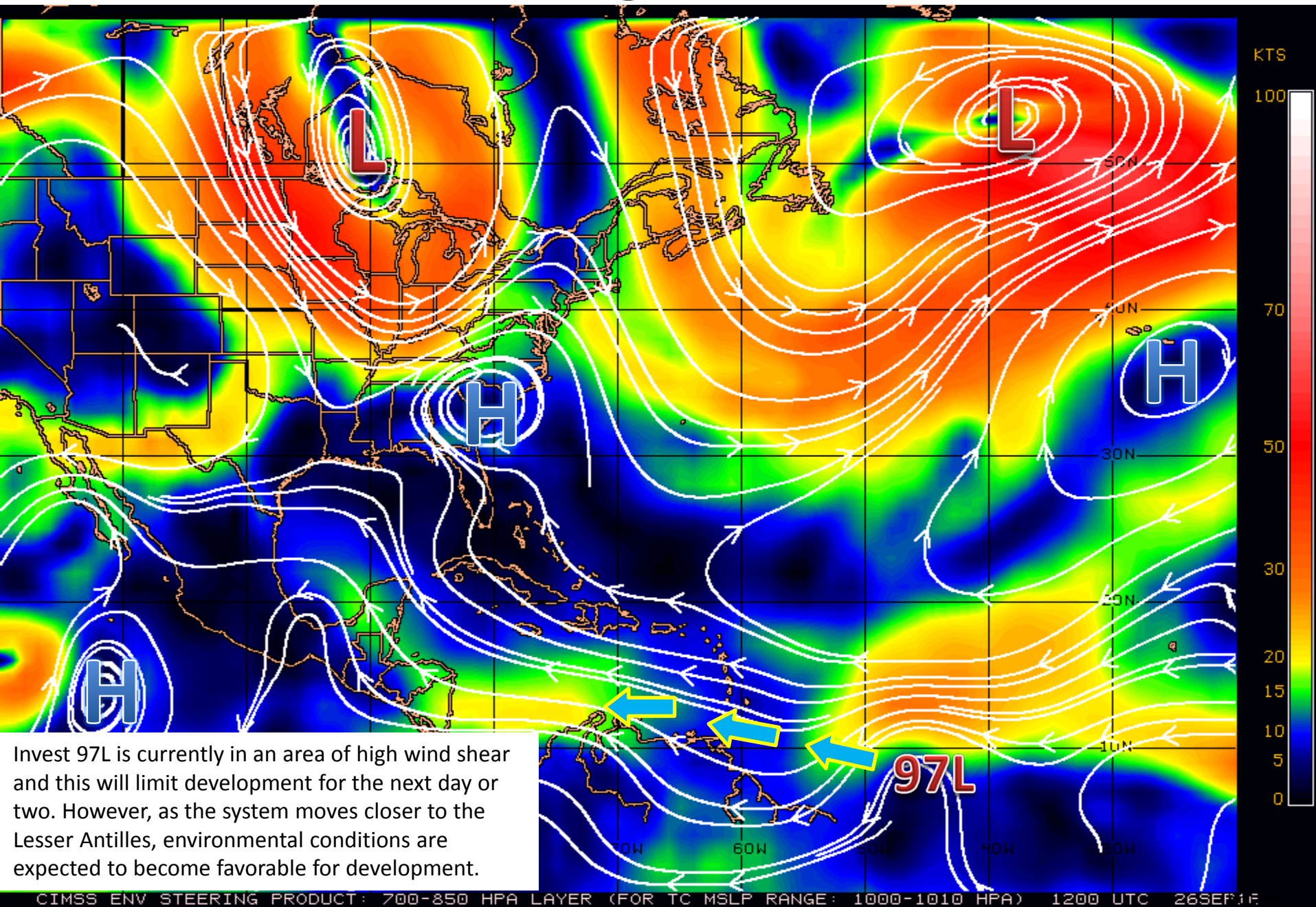
# Sea Surface Temperatures Near 97L

Sea surface temperatures around and ahead of 97L are sufficiently warm enough to support development.

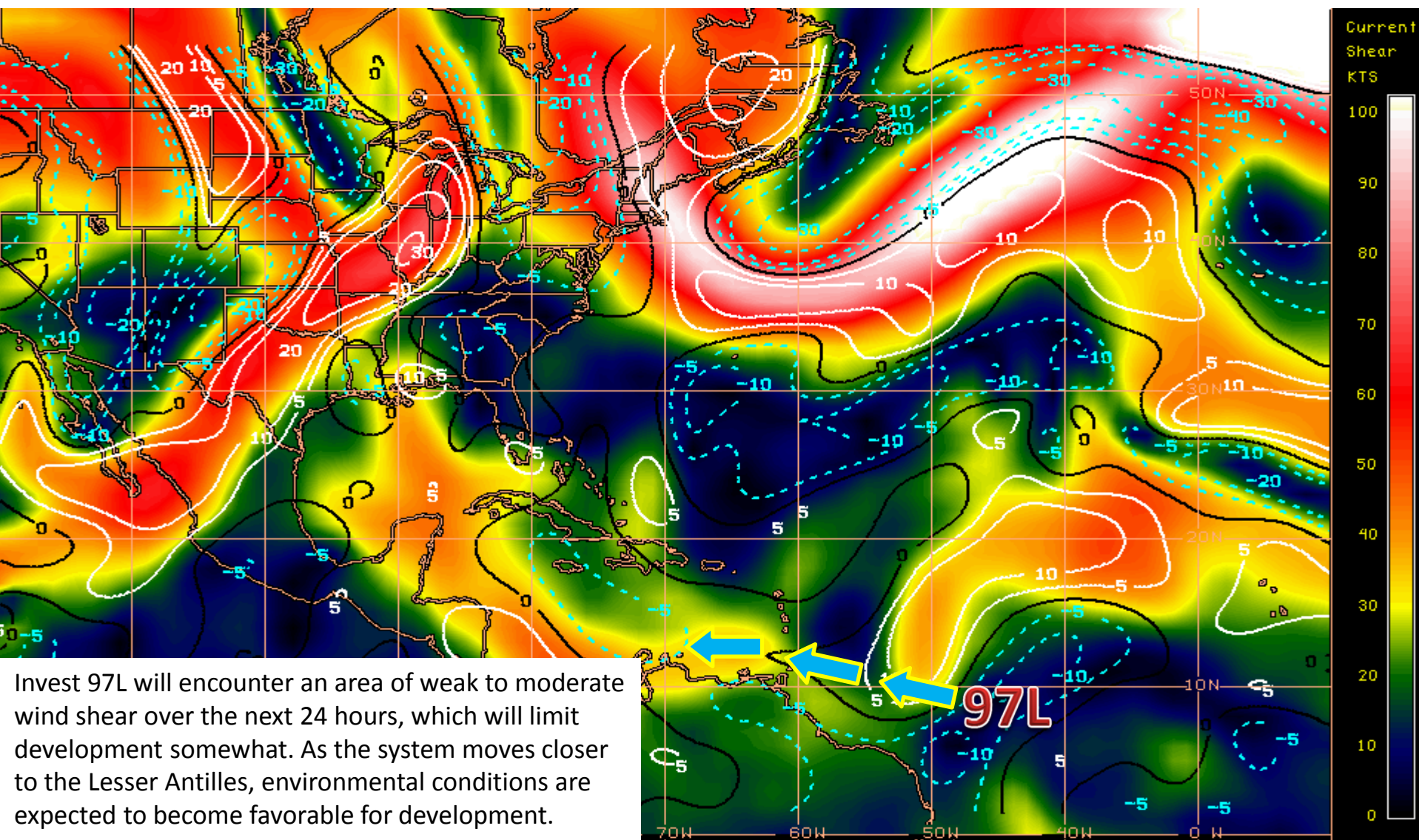




# Steering Currents



# Current Wind Shear (shaded) and Shear Tendency (contours)

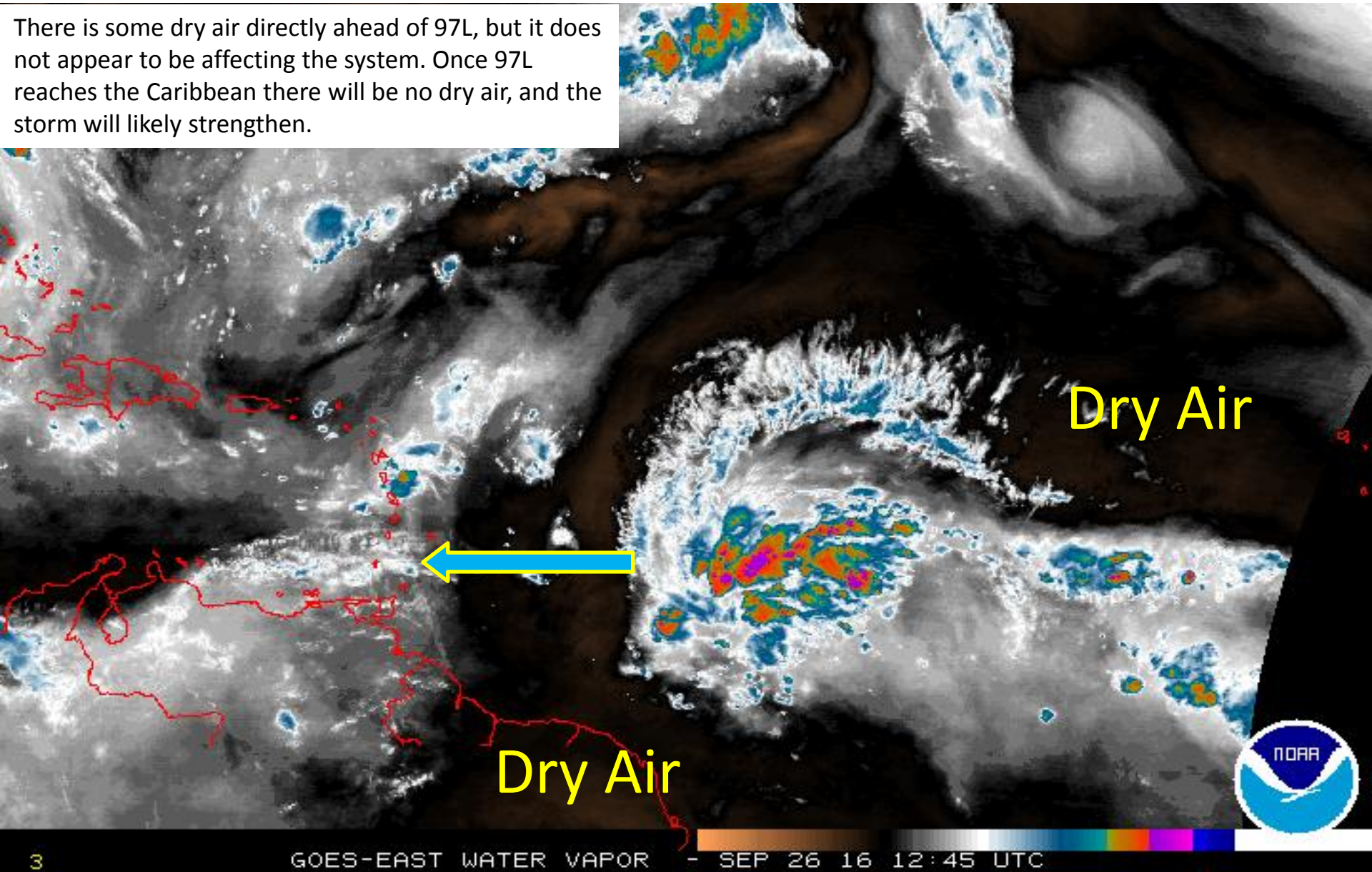


Shear Tendency (KTS) Over Past 24 Hours: Increasing ——— Decreasing - - - -



# Water Vapor Imagery of 97L

There is some dry air directly ahead of 97L, but it does not appear to be affecting the system. Once 97L reaches the Caribbean there will be no dry air, and the storm will likely strengthen.





**Tropical Summary:**

- Showers and thunderstorms associated with Invest 97L are located about 1100 miles east-southeast of the Windward Islands continue to show signs of organization.
- Environmental conditions are expected to be conducive for development, and a tropical depression is likely to form around mid-week while the low moves westward to west northwestward at 15 to 20 mph.
- Interests in the eastern and central Caribbean Sea, including the northern coast of South America, should monitor the progress of this system.
- Regardless of development, heavy rains and strong gusty winds should spread over the Windward Islands and portions of the southern Lesser Antilles beginning late Tuesday or Wednesday.
- The system has a 60% (medium) chance of development over the next 48 hours, and a 90% (high) chance of development through the next five days.
- Matthew is the next name on the 2016 Atlantic storm list.

**Florida Outlook:**

- At this time it is too early to say what, if any, impacts Invest 97L will have on Florida.
- Any impacts, if they occur, are 8-10 days away.

Another briefing packet will be issued on Tuesday morning. For more information on this system, please visit the NHC website at [www.nhc.noaa.gov](http://www.nhc.noaa.gov)



# **TROPICAL UPDATE**

Created by:

Kevin Rodriguez, Deputy State Meteorologist

[Kevin.Rodriguez@em.myflorida.com](mailto:Kevin.Rodriguez@em.myflorida.com)

State Meteorological Support Unit

Florida Division of Emergency  
Management