



# **TROPICAL UPDATE**

**3 PM EDT**

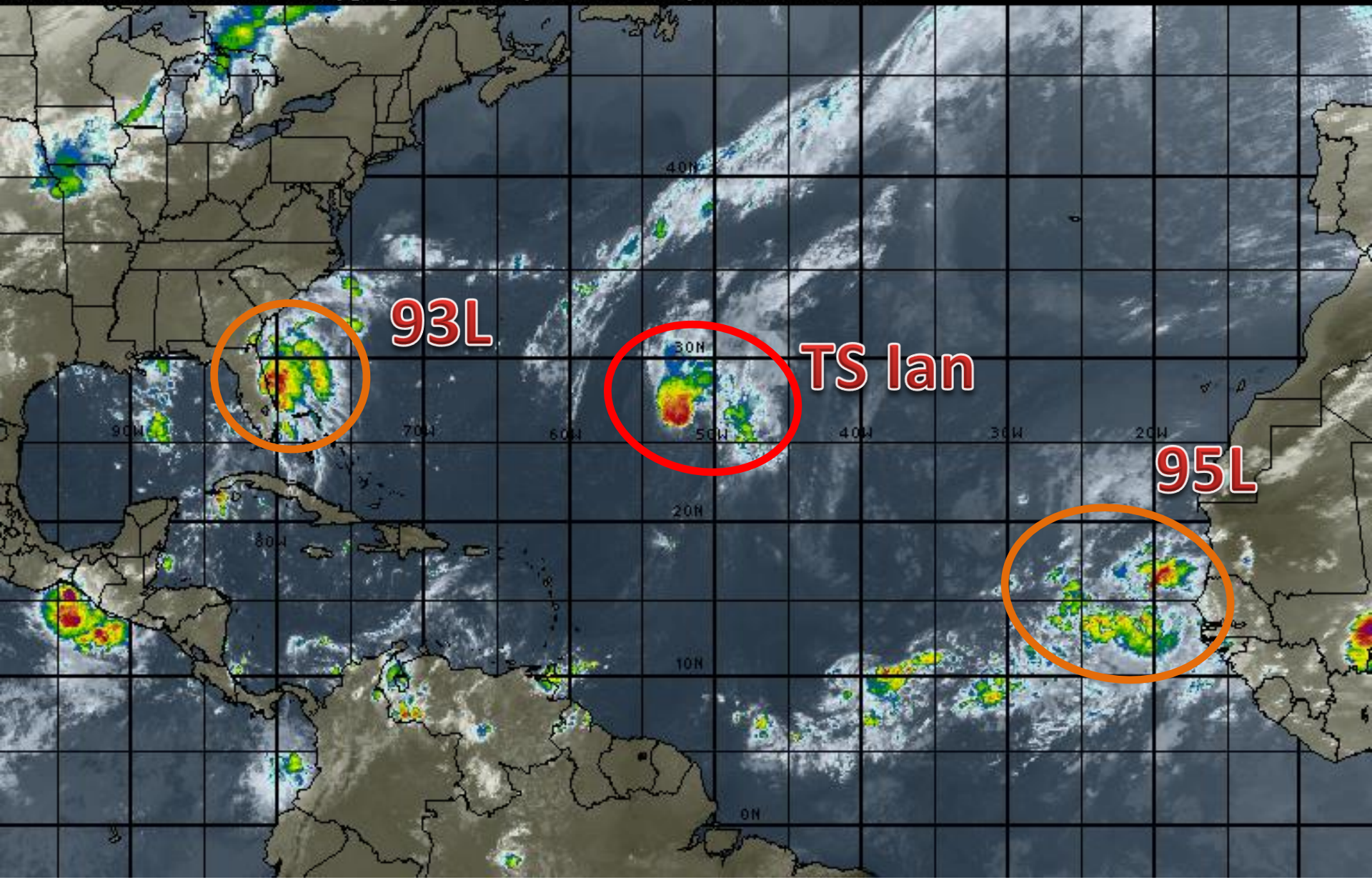
**Tuesday, September 13, 2016**

**T.S. Ian, Invest Area 93L (40%) &  
Invest 95L (50%)**

**This update is intended for government and emergency response officials, and is provided for informational and situational awareness purposes only. Forecast conditions are subject to change based on a variety of environmental factors. For additional information, or for any life safety concerns with an active weather event please contact your County Emergency Management or Public Safety Office, local National Weather Service forecast office or visit the National Hurricane Center website at [www.nhc.noaa.gov](http://www.nhc.noaa.gov).**

# Atlantic Basin Satellite Image

15:00 13-SEP-2016 GMT ©Copyright WSI Corporation <http://www.wsi.com>







# Two-Day Graphical Tropical Weather Outlook

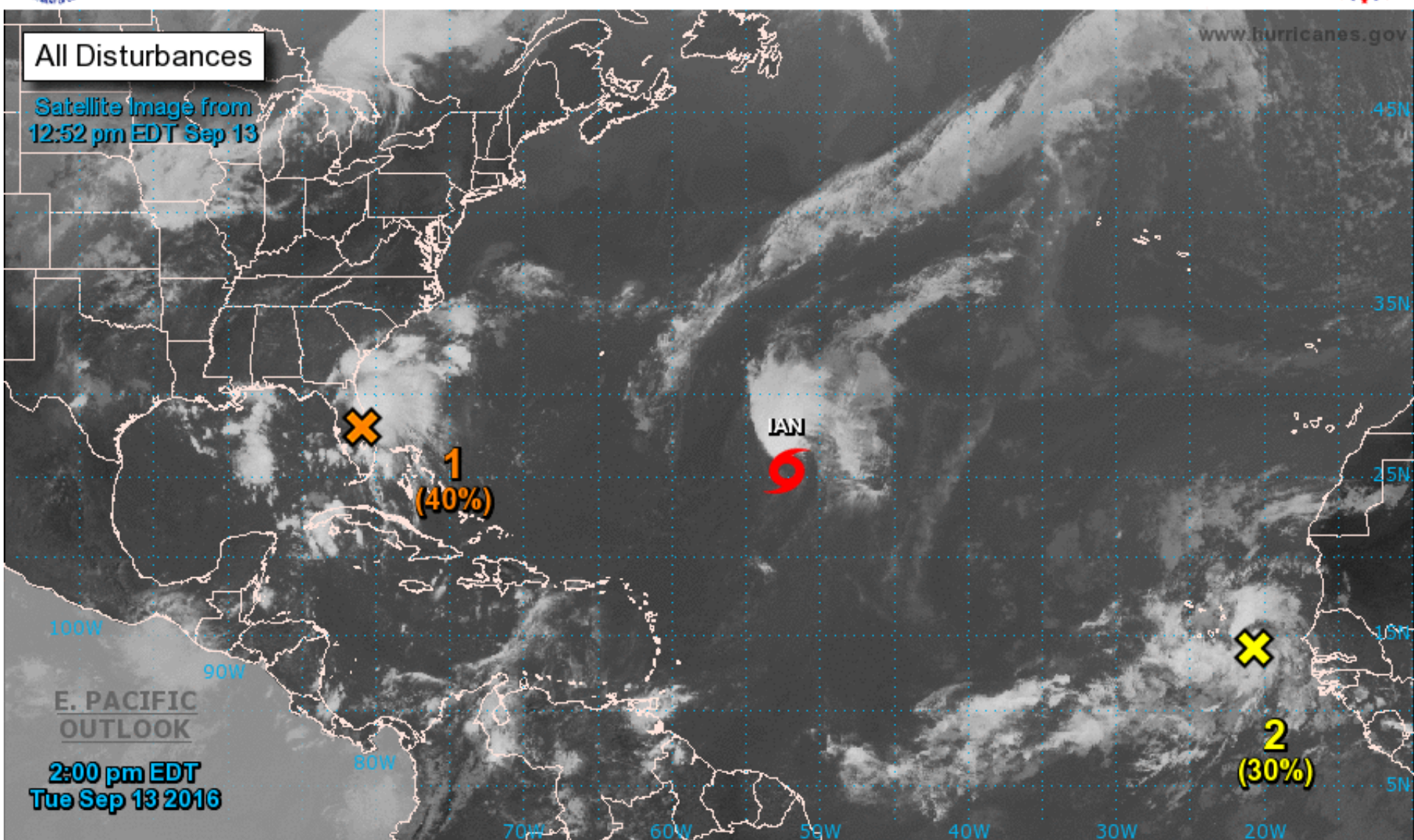
National Hurricane Center Miami, Florida



All Disturbances

Satellite Image from  
12:52 pm EDT Sep 13

www.hurricanes.gov



Current Disturbances and Two-Day Cyclone Formation Chance: < 40% 40-60% > 60%

Tropical or Sub-Tropical Cyclone: Depression Storm Hurricane

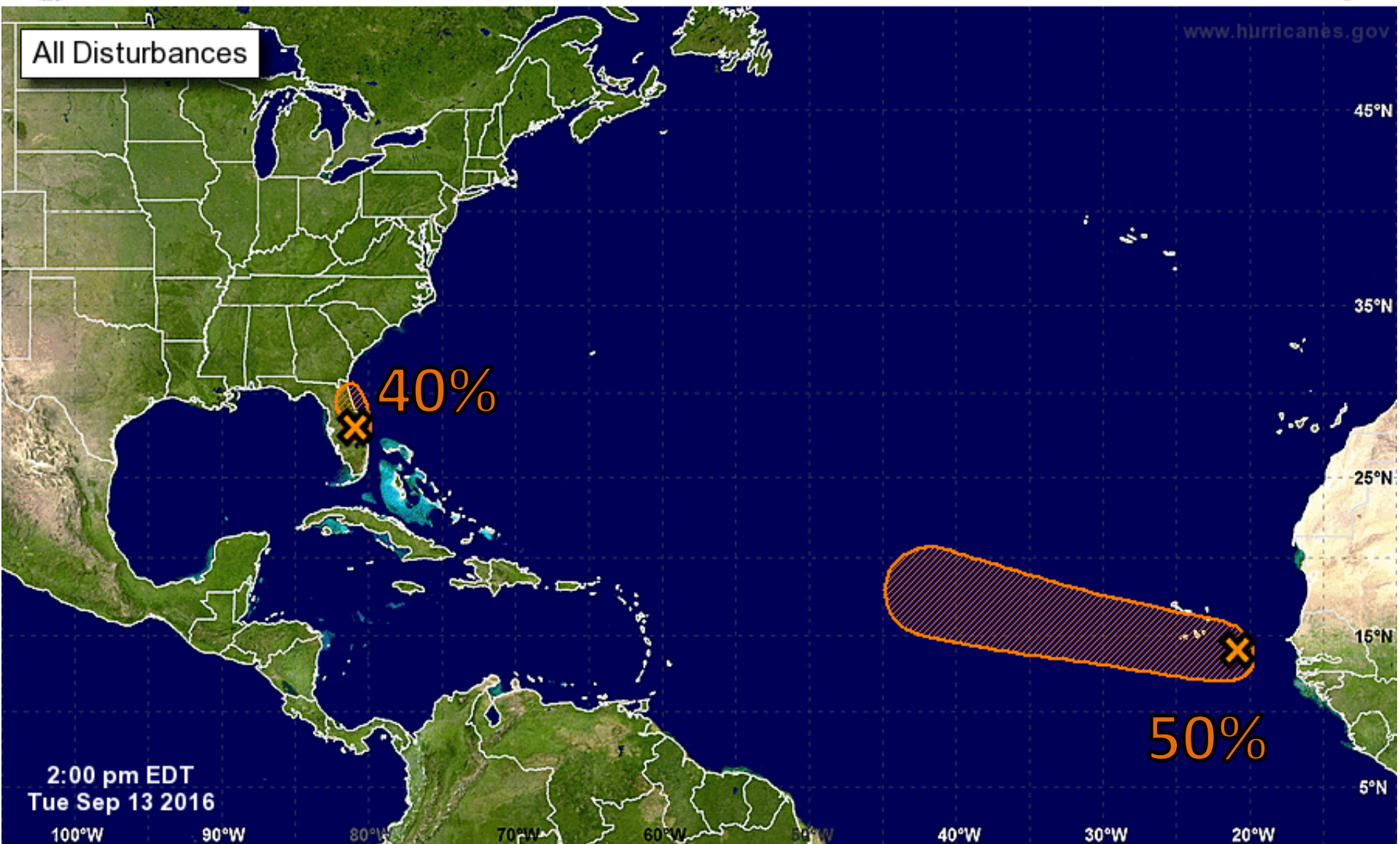
Post-Tropical Cyclone Remnants





# Five-Day Graphical Tropical Weather Outlook

National Hurricane Center Miami, Florida



Tropical Cyclone Formation Potential for the Five-Day Period Ending at 2:00 pm EDT Sun Sep 18 2016

Chance of Cyclone Formation in Five Days: ■ Low < 40% ■ Medium 40-60% ■ High > 60%

X indicates current disturbance location; shading indicates potential formation area.



**Invest 93L**

**8 AM Tue Sep 13 2016**

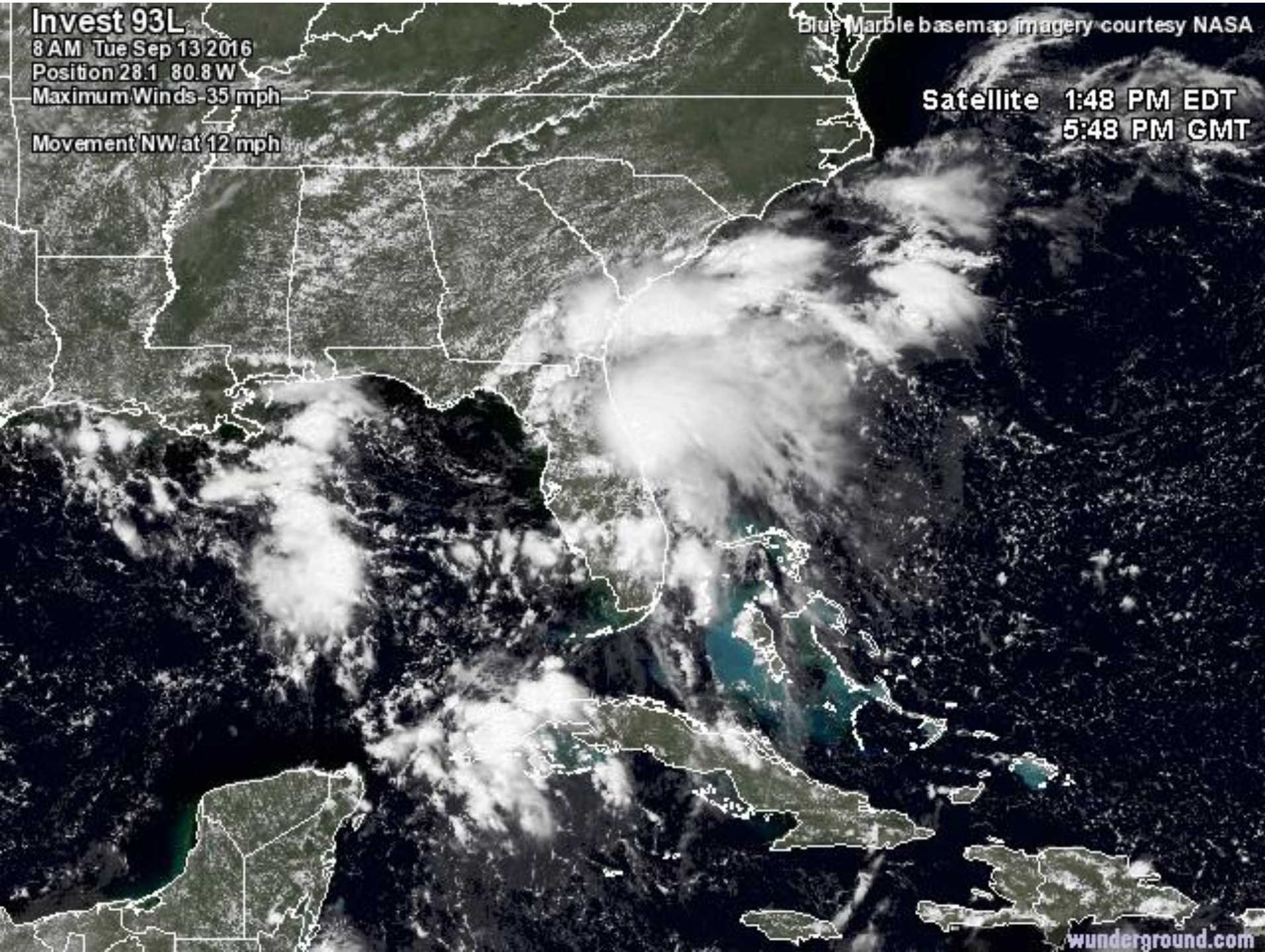
**Position 28.1 80.8 W**

**Maximum Winds 35 mph**

**Movement NW at 12 mph**

Blue Marble basemap imagery courtesy NASA

**Satellite 1:48 PM EDT  
5:48 PM GMT**

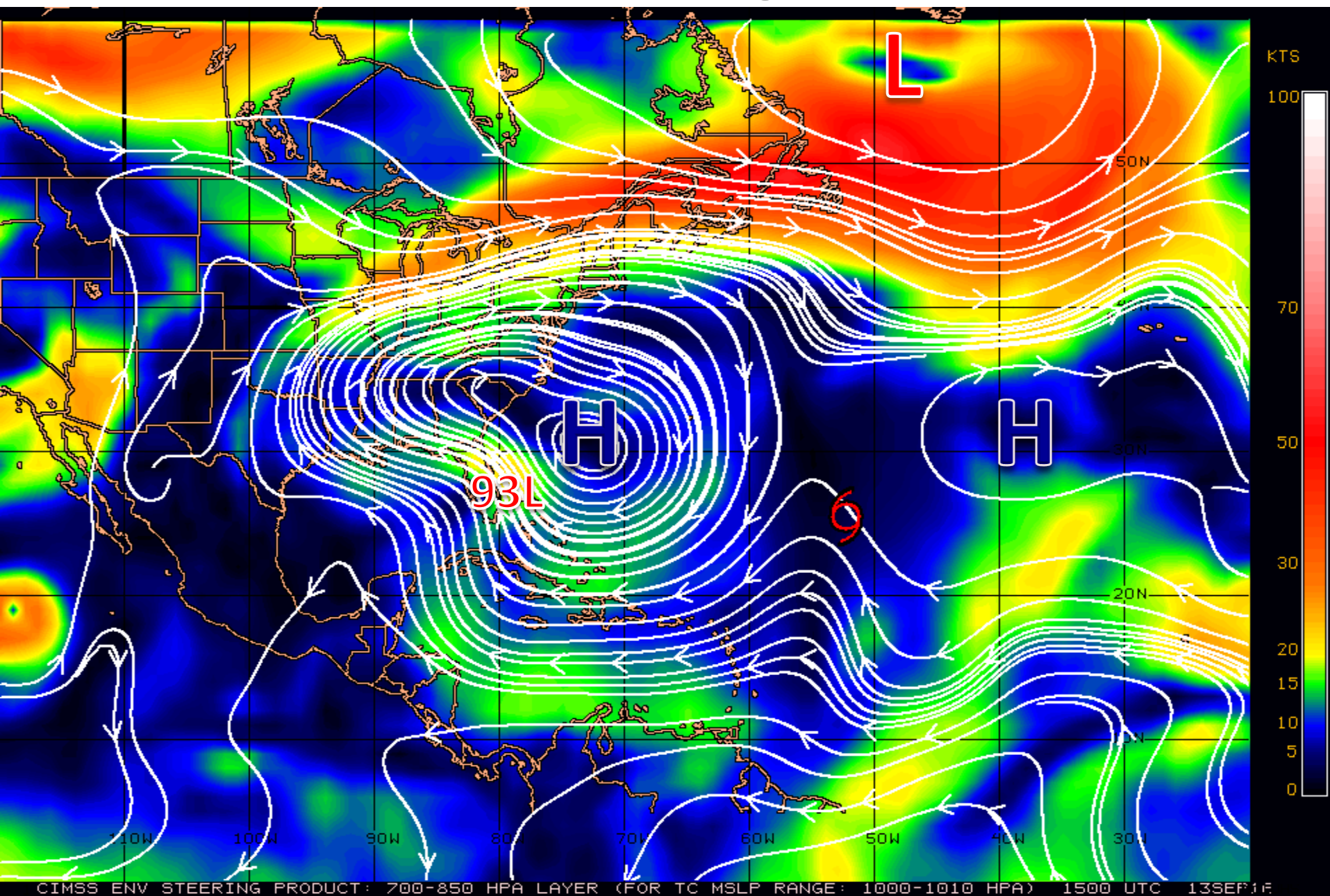






Apparent enter  
of circulation

# Current Steering Currents

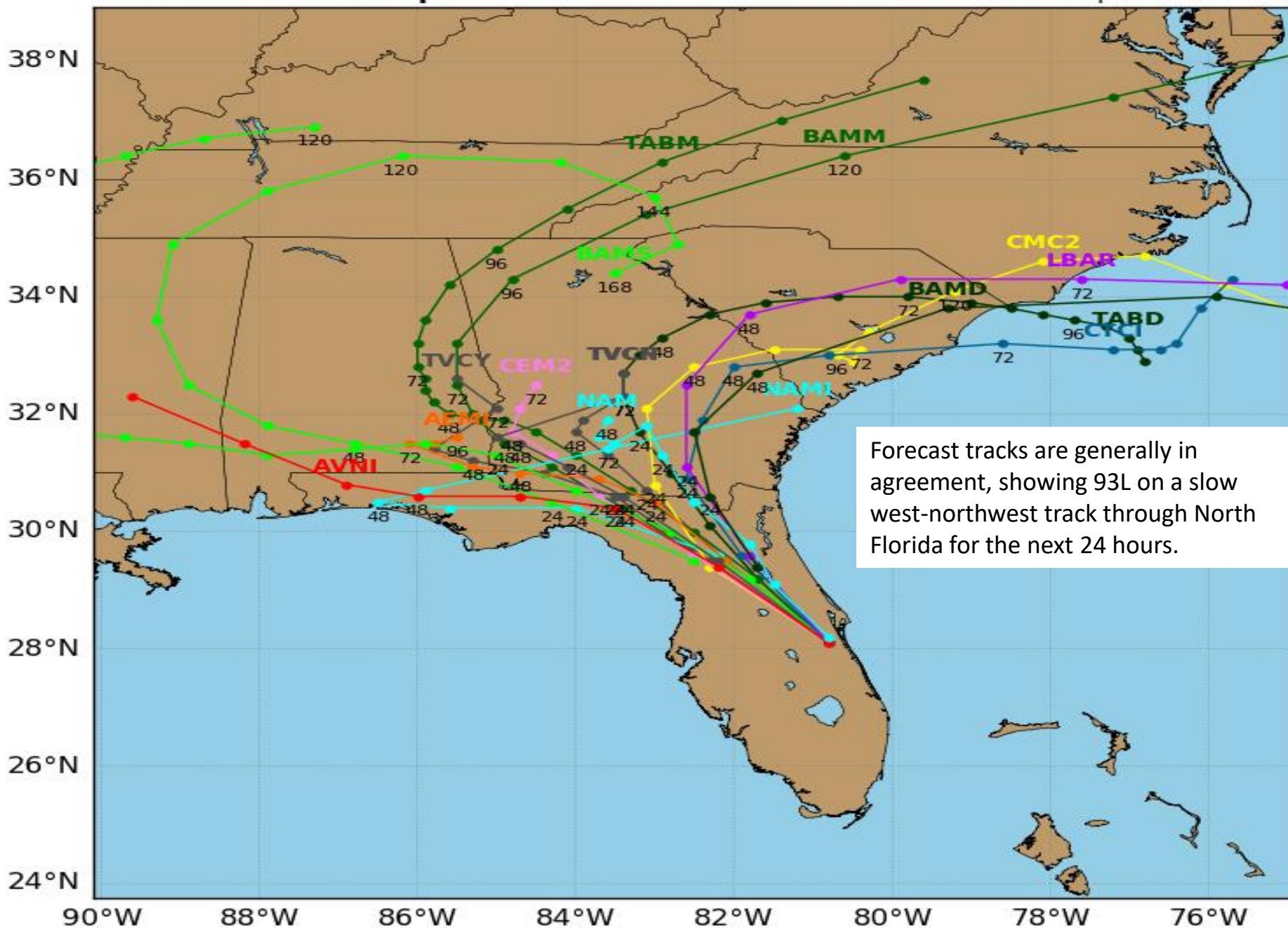




# Invest 93L Model Track Guidance

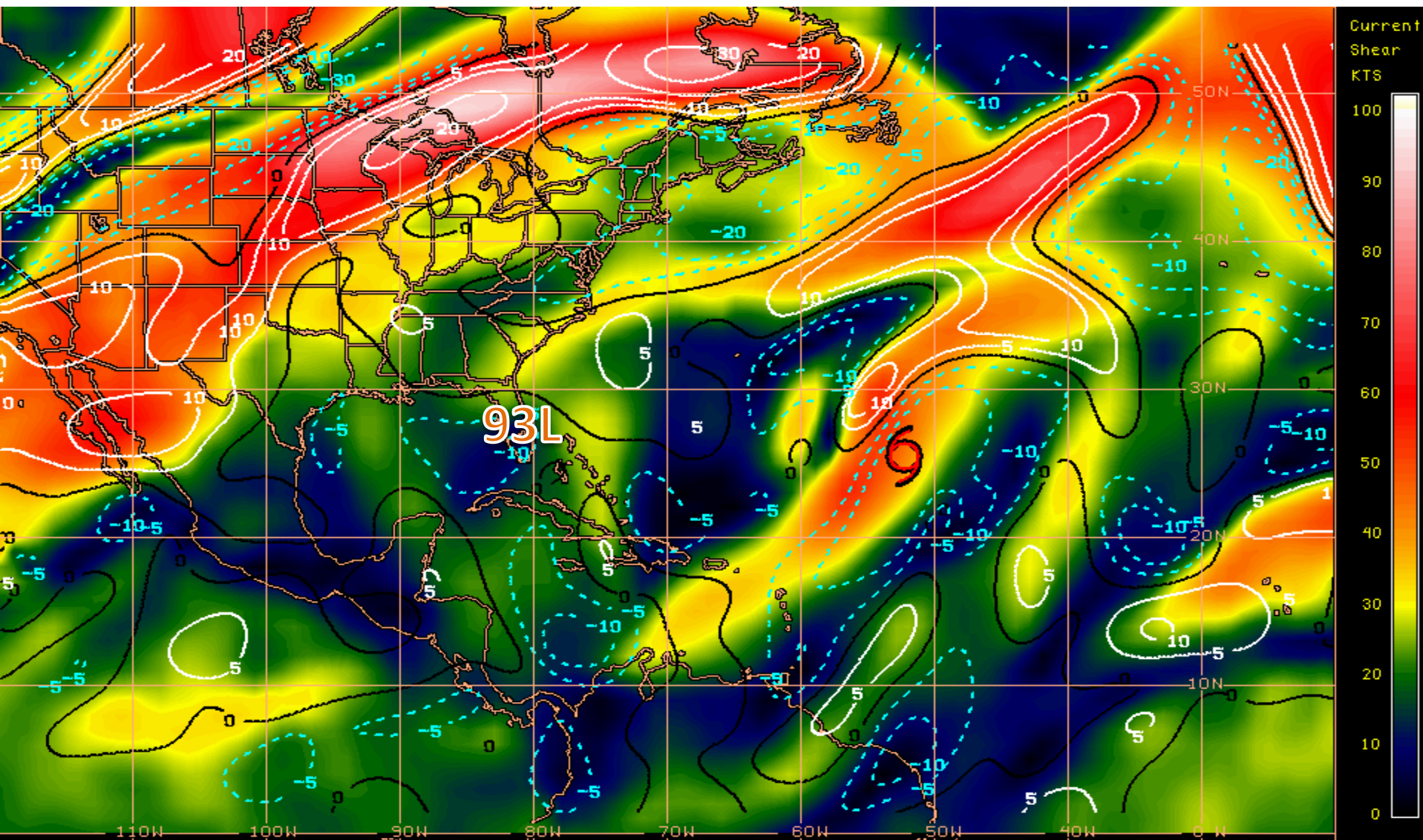
Initialized at 12z Sep 13 2016

Levi Cowan - [tropicaltidbits.com](http://tropicaltidbits.com)





# Current Wind Shear (shaded) and Shear Tendency (lines)



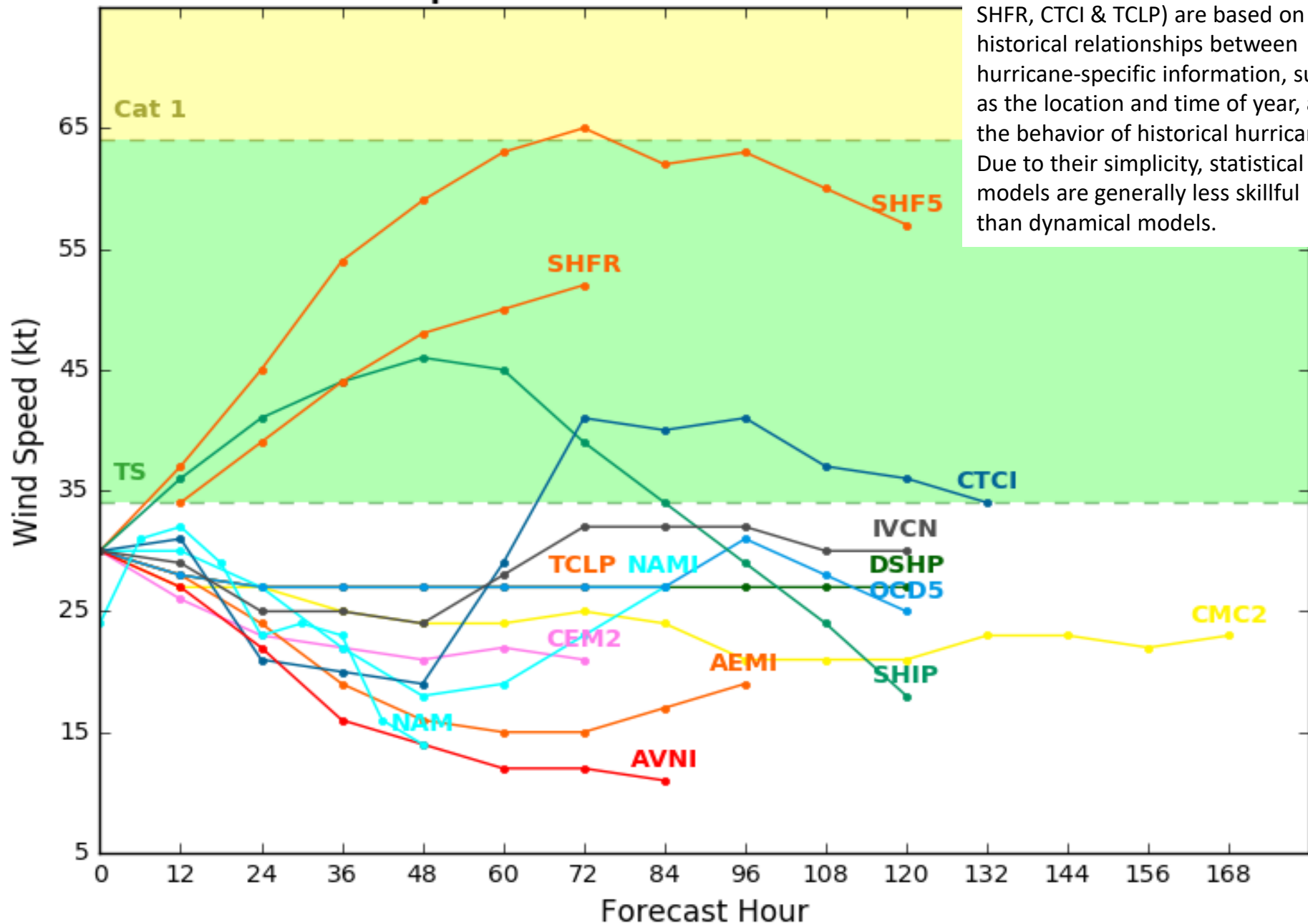
Shear Tendency (KTS) Over Past 24 Hours: Increasing ——— Decreasing - - - -

# Invest 93L Model Intensity Guidance

Initialized at 12z Sep 13 2016

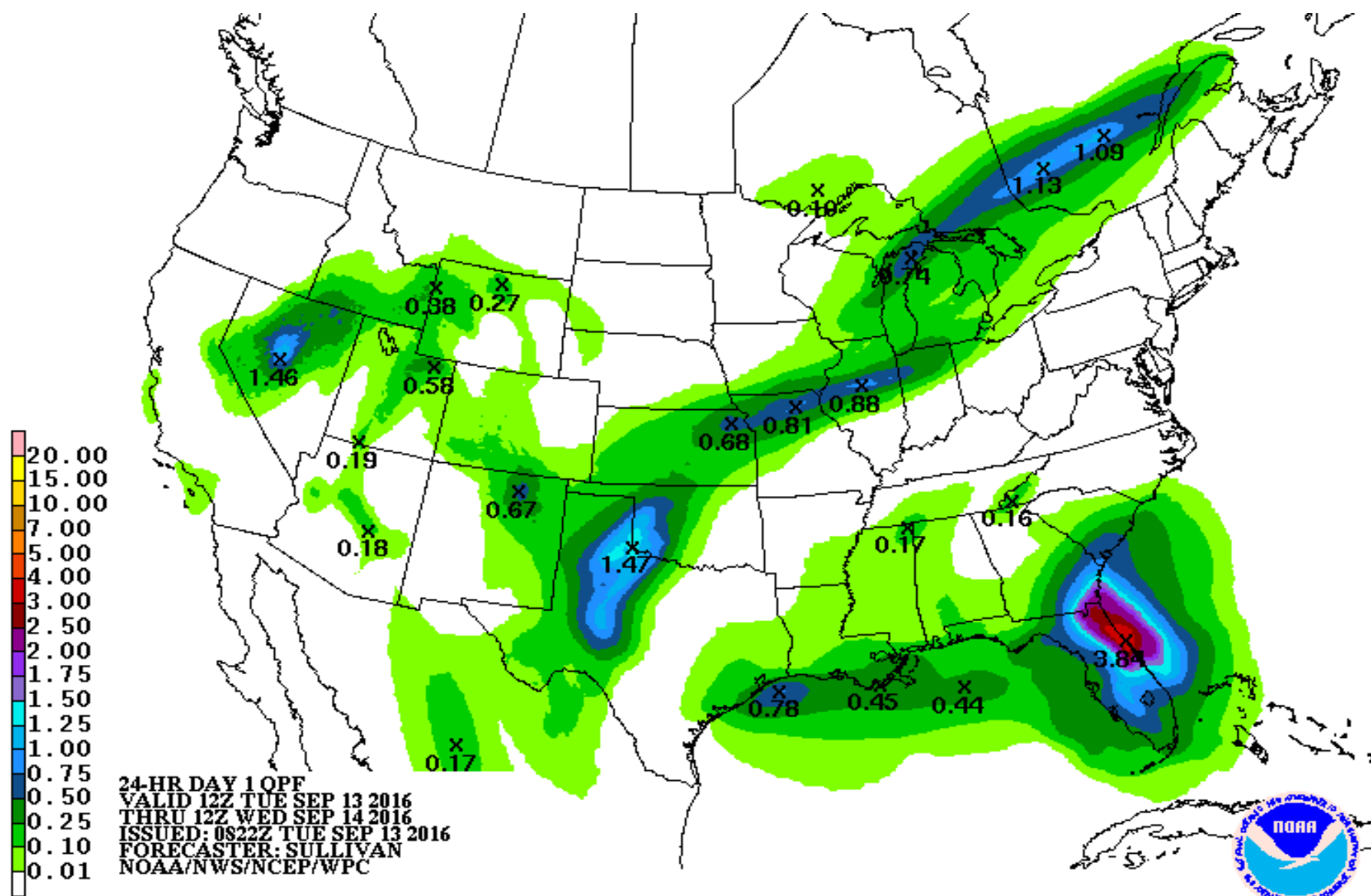
Levi

Note: Statistical models (SHF5, SHIP, SHFR, CTCI & TCLP) are based on historical relationships between hurricane-specific information, such as the location and time of year, and the behavior of historical hurricanes. Due to their simplicity, statistical models are generally less skillful than dynamical models.

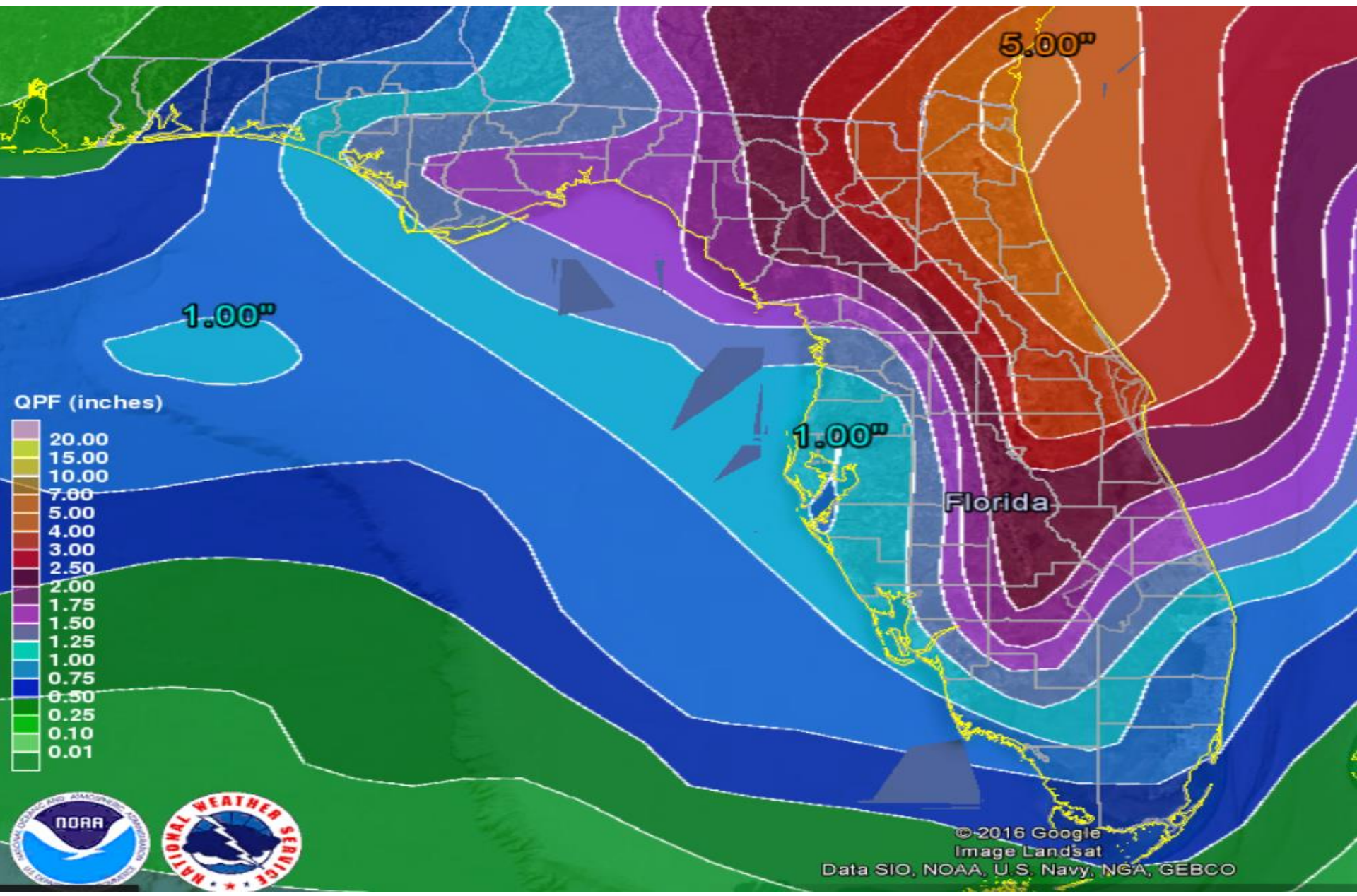




# Next 24 hour Forecast Rainfall

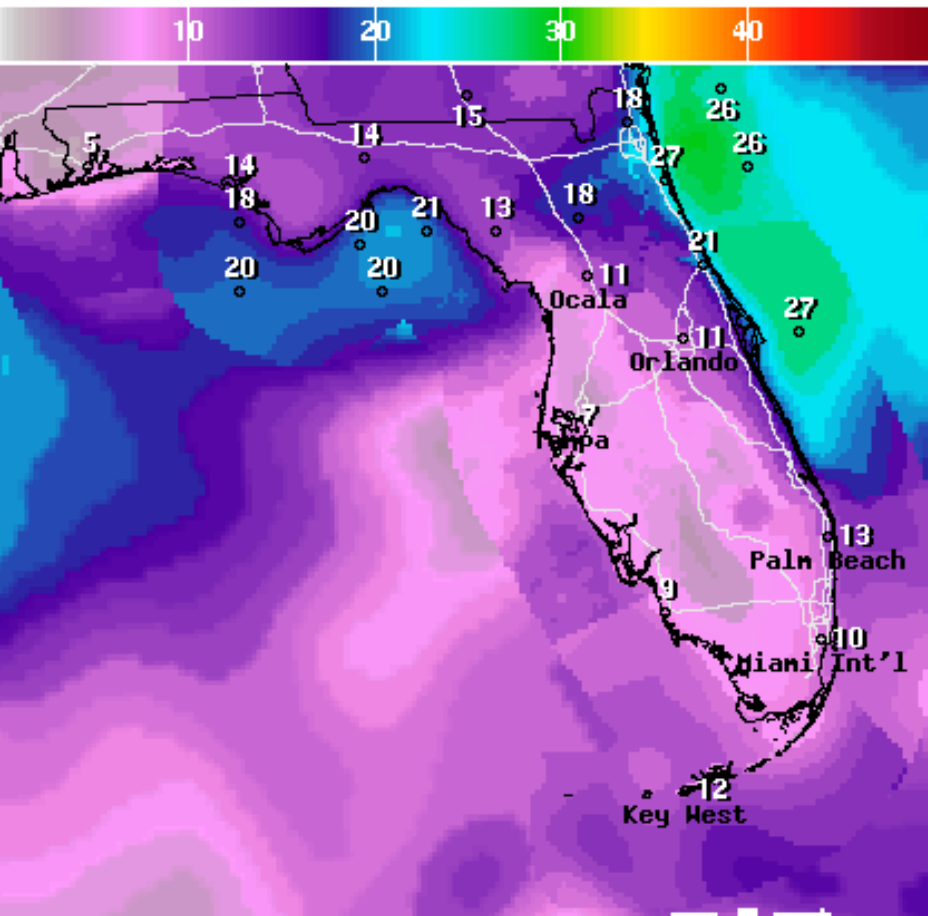




# Next 72 hour forecast total rainfall

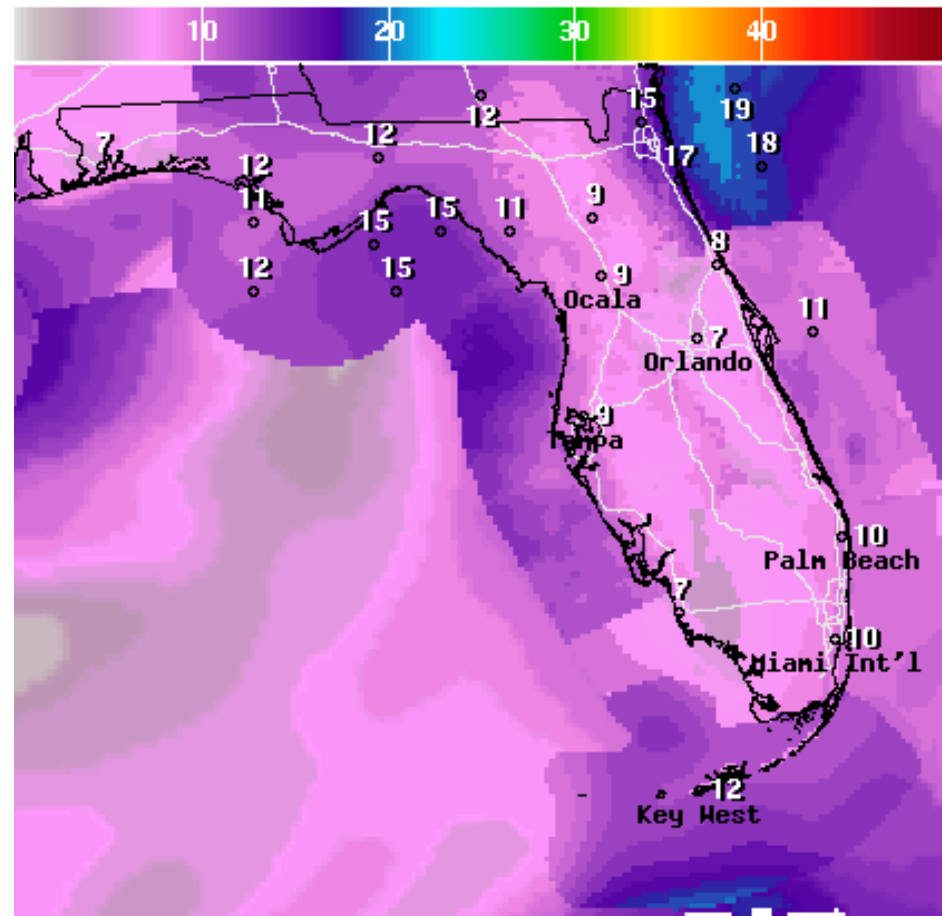




# Forecast Wind Gusts

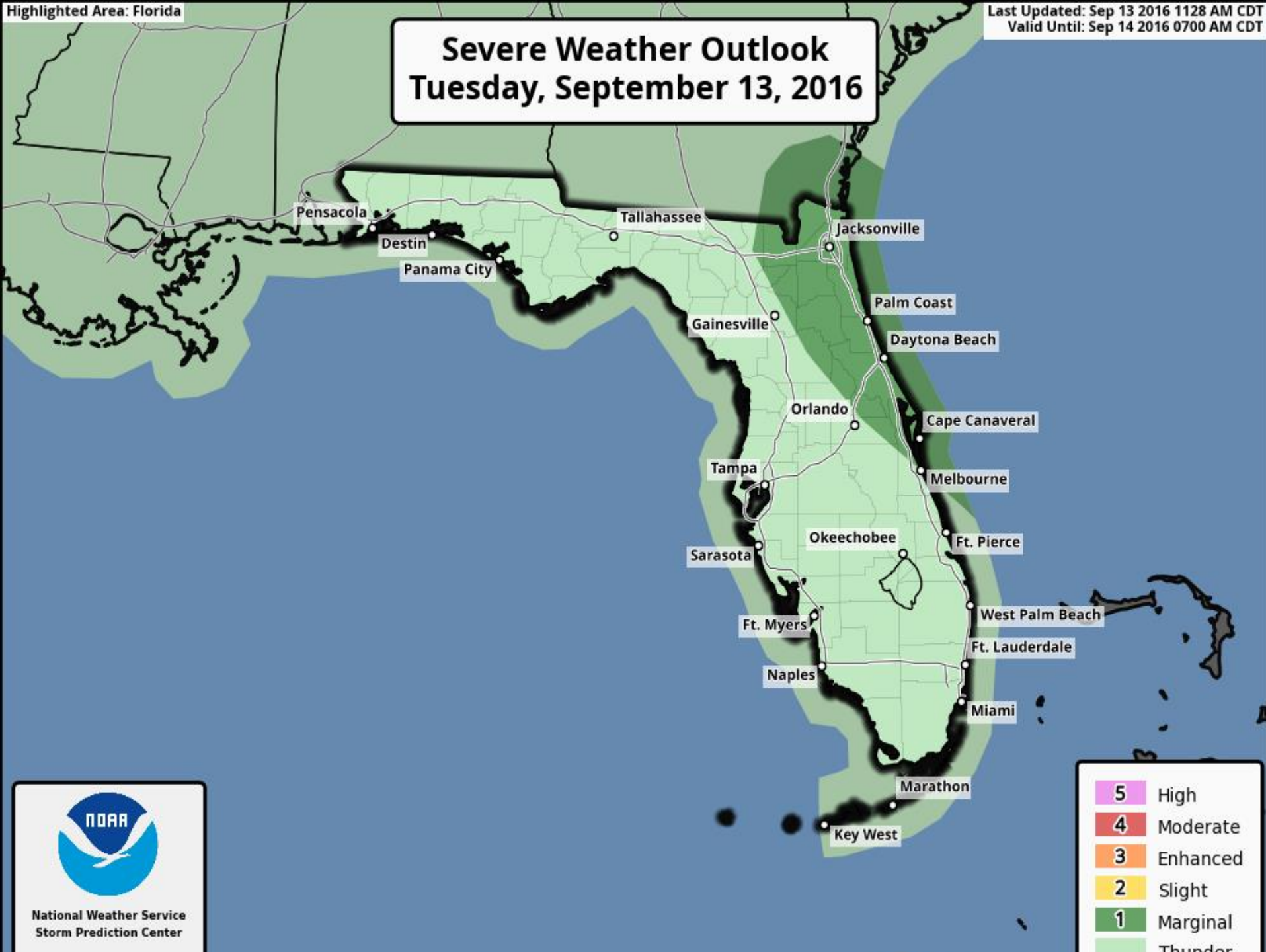


 **National Digital Forecast Database**  
17z issuance      Graphic created-Sep 13 1:42PM EDT 



 **National Digital Forecast Database**  
17z issuance      Graphic created-Sep 13 1:42PM EDT 

# Severe Weather Outlook Tuesday, September 13, 2016



National Weather Service  
Storm Prediction Center

5	High
4	Moderate
3	Enhanced
2	Slight
1	Marginal
	Thunder



# Invest 95L

8 AM Tue Sep 13 2016

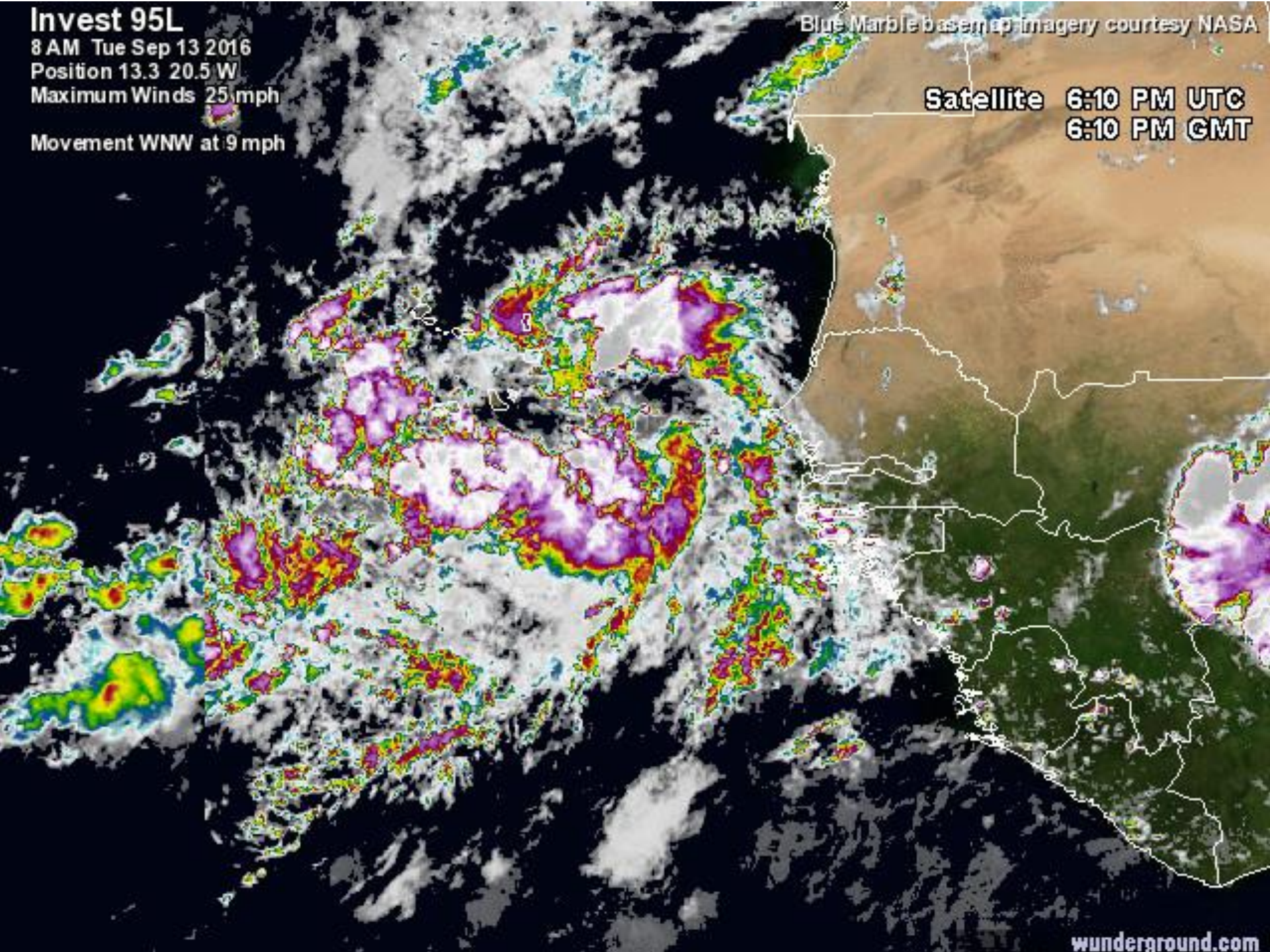
Position 13.3 20.5 W

Maximum Winds 25 mph

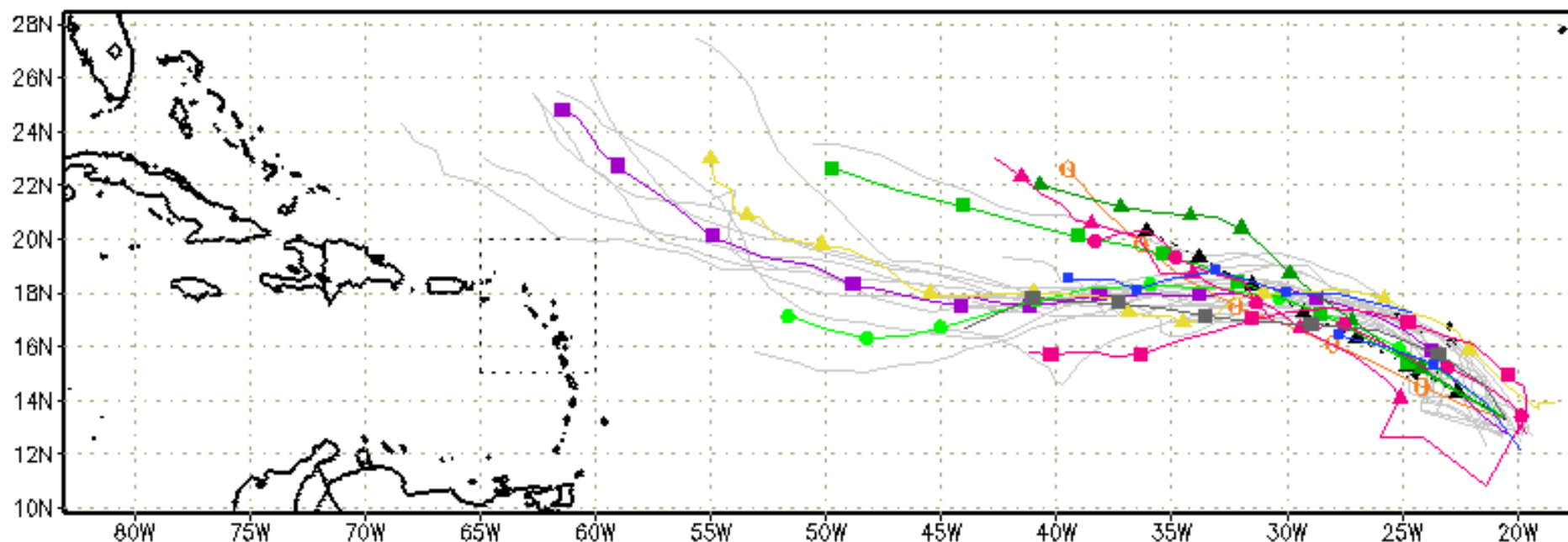
Movement WNW at 9 mph

Blue Marble basemap imagery courtesy NASA

Satellite 6:10 PM UTC  
6:10 PM GMT



--▲-- XTRP 13/1200Z    ▲ BAMD 13/1200Z    ▲ GFDL 13/0000Z    ▲ AVNO 13/0600Z    ▲ CMC 13/0000Z  
 ■ TVCN 13/1200Z    ■ BAMB 13/1200Z    ■ GFDN 13/0000Z    ■ AEMN 13/0600Z    ■ UKM 13/1200Z  
 ● TV15 Not Avail    ● BAMS 13/1200Z    ● HWRF 13/0000Z    ● APxx 13/0600Z    ● NGX Not Avail  
 ● NHC Not Avail    ○ AHWI Not Avail    ○ FIM9 Not Avail    ○ GLP5 13/1200Z





# Tropical Storm Ian

11 AM EDT Tue Sep 13, 2016

Position 25.4 N 52.3 W

Maximum Winds 45 mph

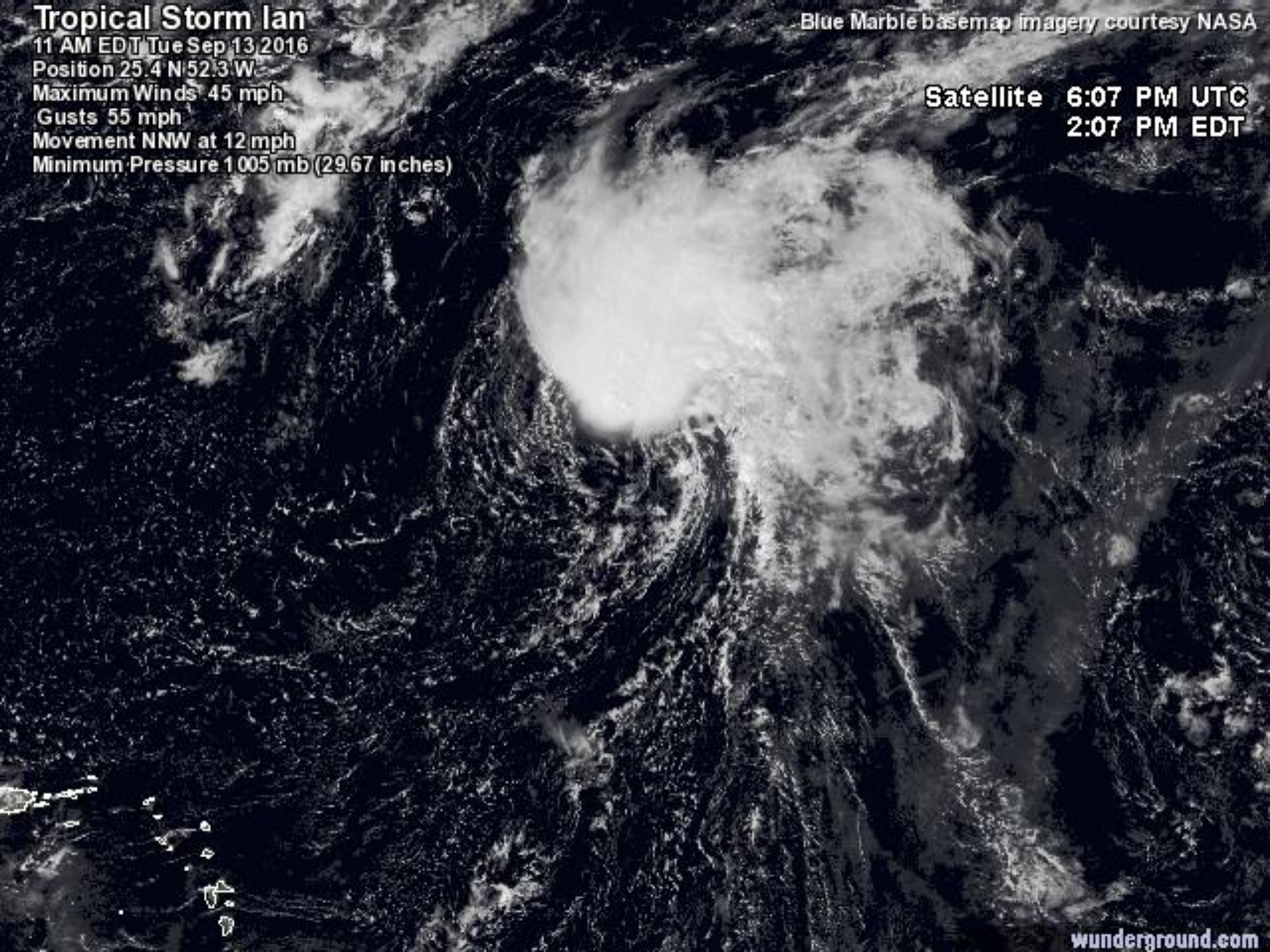
Gusts 55 mph

Movement NNW at 12 mph

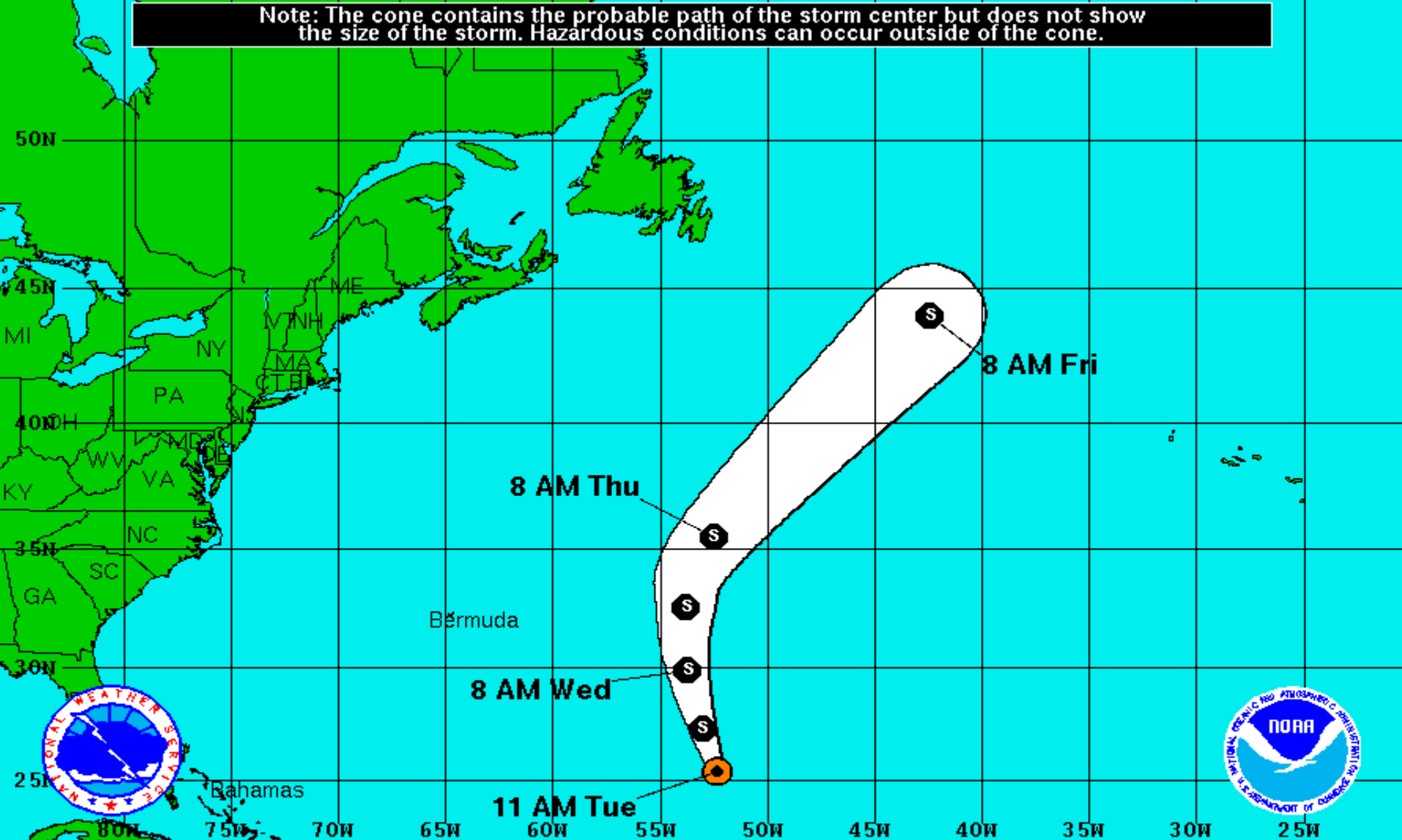
Minimum Pressure 1005 mb (29.67 inches)

Blue Marble basemap imagery courtesy NASA


Satellite 6:07 PM UTC  
2:07 PM EDT





Note: The cone contains the probable path of the storm center but does not show the size of the storm. Hazardous conditions can occur outside of the cone.



**Tropical Storm Ian**  
Tuesday September 13, 2016  
11 AM EDT Advisory 5  
NWS National Hurricane Center

**Current Information:**   
Center Location 25.4 N 52.3 W  
Max Sustained Wind 45 mph  
Movement NNW at 13 mph

**Forecast Positions:**  
 Tropical Cyclone  Post-Tropical  
Sustained Winds: D < 39 mph  
S 39-73 mph H 74-110 mph M > 110mph

**Potential Track Area:**



Day 1-3

**Watches:**

 Hurricane  Trop.Storm

**Warnings:**

 Hurricane  Trop.Storm



## Summary:

- Surface observations, satellite images, and radar data indicate that the tropical area of low pressure is, **Invest 93L**, located over Daytona Beach, Florida, continues to produce a large area of showers and thunderstorms, with winds to tropical storm force along or just offshore of portions of the northeast Florida coast.
- This system is very close to having the organization required of a tropical cyclone, and advisories could be initiated later this afternoon and now has a 40% chance of becoming a tropical depression or storm within the next 48 hours.
- The next name on the 2016 Atlantic storm name list is Julia.
- Regardless of development, the low is expected to north-northwestward at 10 to 15 mph today, near and parallel to the northeast coast of Florida, and then moving inland over the Suwannee Valley on Wednesday.
- A broad area of low pressure associated with a tropical wave, **Invest Area 95L** is located a couple of hundred miles east-southeast of the Cabo Verde Islands and continues to produce a large area of disorganized cloudiness and showers.
- Slow development of this disturbance is possible during the next several days while it moves west-northwestward at 10 to 15 mph over the tropical Atlantic.
- Invest 95L has a 30% (low) chance of development in the next 48 hours, and a 50% (medium) chance of development through the next five days.
- **Tropical Storm Ian** is located 895 miles east-southeast of Bermuda, and currently has maximum sustained winds of 45 mph.
- Ian is moving toward the north-northwest near 13 mph.

## Florida Outlook:

- Tropical Storm Ian does not pose a threat to Florida.
- Invest 93L will continue to produce scattered showers and some gusty winds to the Florida Peninsula today and tomorrow. Heavy rainfall and isolated tornadoes could also occur.
- At this point, it is too early to know what, if any, impacts we might see from Invest 95L.

Another briefing packet will be issued on Wednesday morning. For more information on this system, please visit the NHC website at [www.nhc.noaa.gov](http://www.nhc.noaa.gov)



# TROPICAL UPDATE

Created by:

Amy Godsey, Chief State Meteorologist

[amy.godsey@em.myflorida.com](mailto:amy.godsey@em.myflorida.com)

State Meteorological Support Unit

Florida Division of Emergency  
Management

Users wishing to subscribe (approval pending) to this distribution list, register at [https://public.govdelivery.com/accounts/FLDEM/subscriber/new?topic\\_id=SERT\\_Met\\_Tropics](https://public.govdelivery.com/accounts/FLDEM/subscriber/new?topic_id=SERT_Met_Tropics).

Other reports available for subscription are available at

<https://public.govdelivery.com/accounts/FLDEM/subscriber/new?preferences=true>