



TROPICAL UPDATE

10 AM EDT

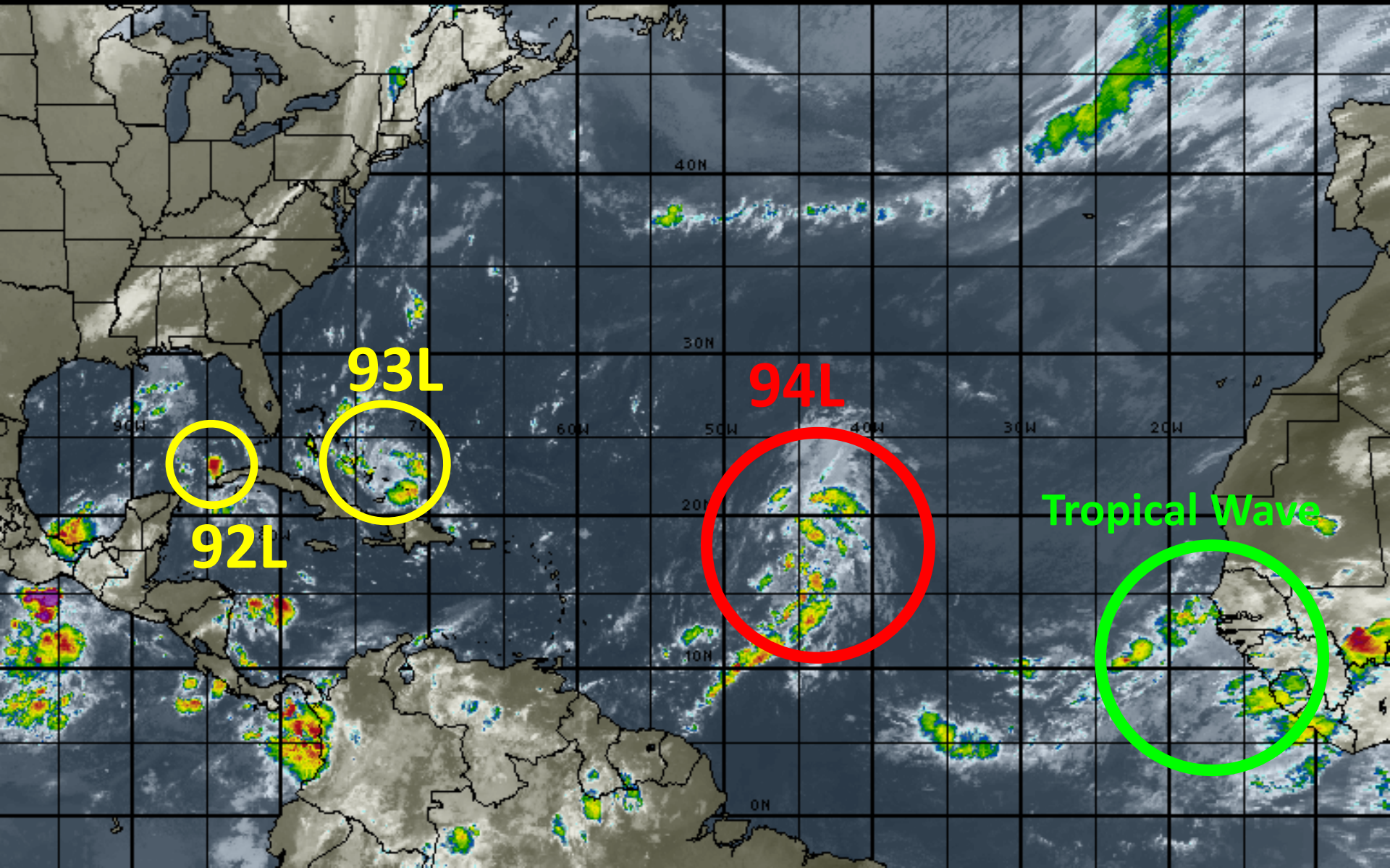
Sunday, September 11, 2016

**Invest 92L (0%), Invest 93L (0%),
& Invest 94L (80%)**

This update is intended for government and emergency response officials, and is provided for informational and situational awareness purposes only. Forecast conditions are subject to change based on a variety of environmental factors. For additional information, or for any life safety concerns with an active weather event please contact your County Emergency Management or Public Safety Office, local National Weather Service forecast office or visit the National Hurricane Center website at www.nhc.noaa.gov.

Atlantic Basin Satellite Image

12:00 11-SEP-2016 GMT ©Copyright WSI Corporation <http://www.wsi.com>





Two-Day Graphical Tropical Weather Outlook

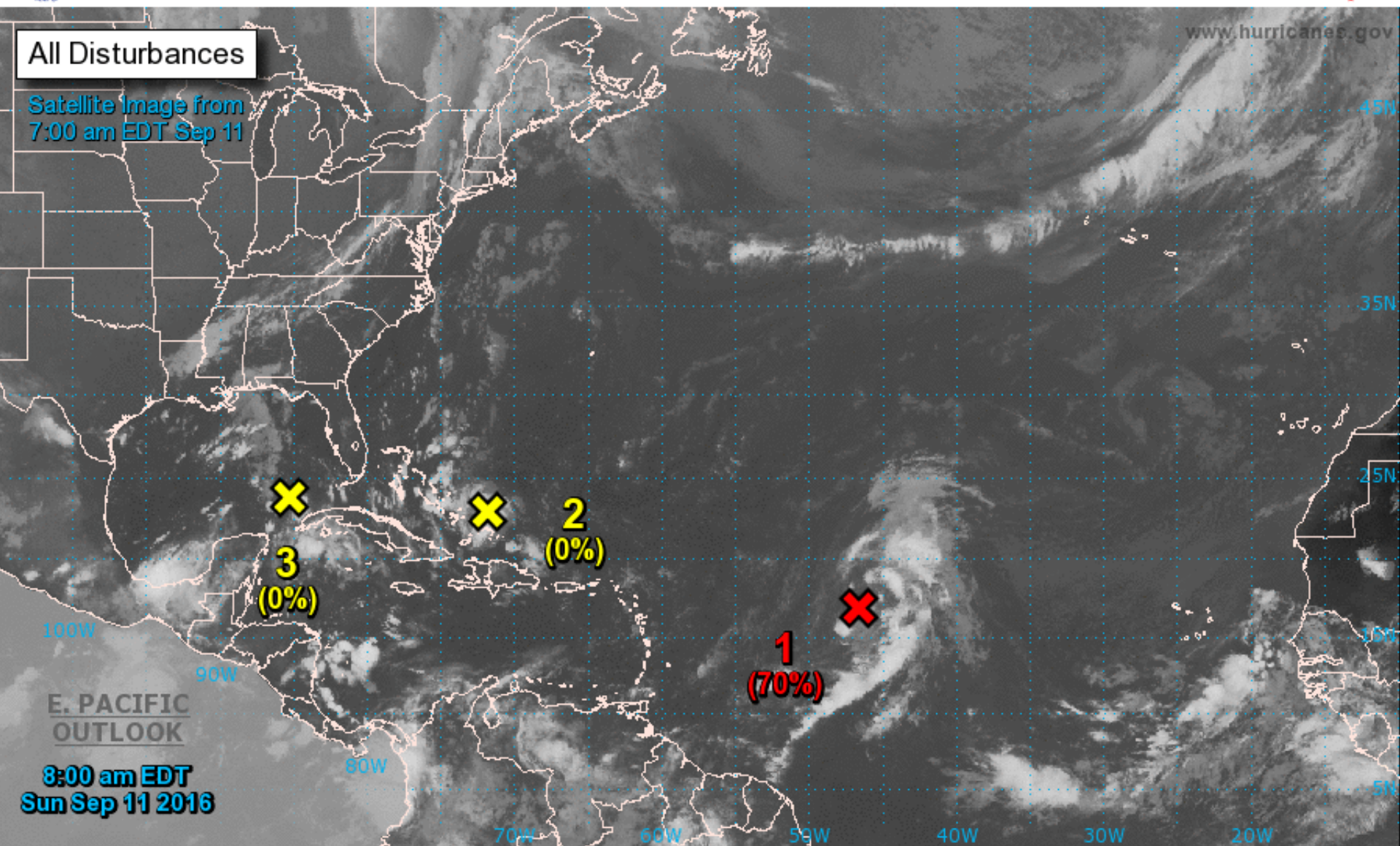
National Hurricane Center Miami, Florida



www.hurricanes.gov

All Disturbances

Satellite Image from
7:00 am EDT Sep 11



E. PACIFIC
OUTLOOK

8:00 am EDT
Sun Sep 11 2016

Current Disturbances and Two-Day Cyclone Formation Chance: < 40% 40-60% > 60%

Tropical or Sub-Tropical Cyclone: Depression Storm Hurricane

Post-Tropical Cyclone Remnants



Five-Day Graphical Tropical Weather Outlook

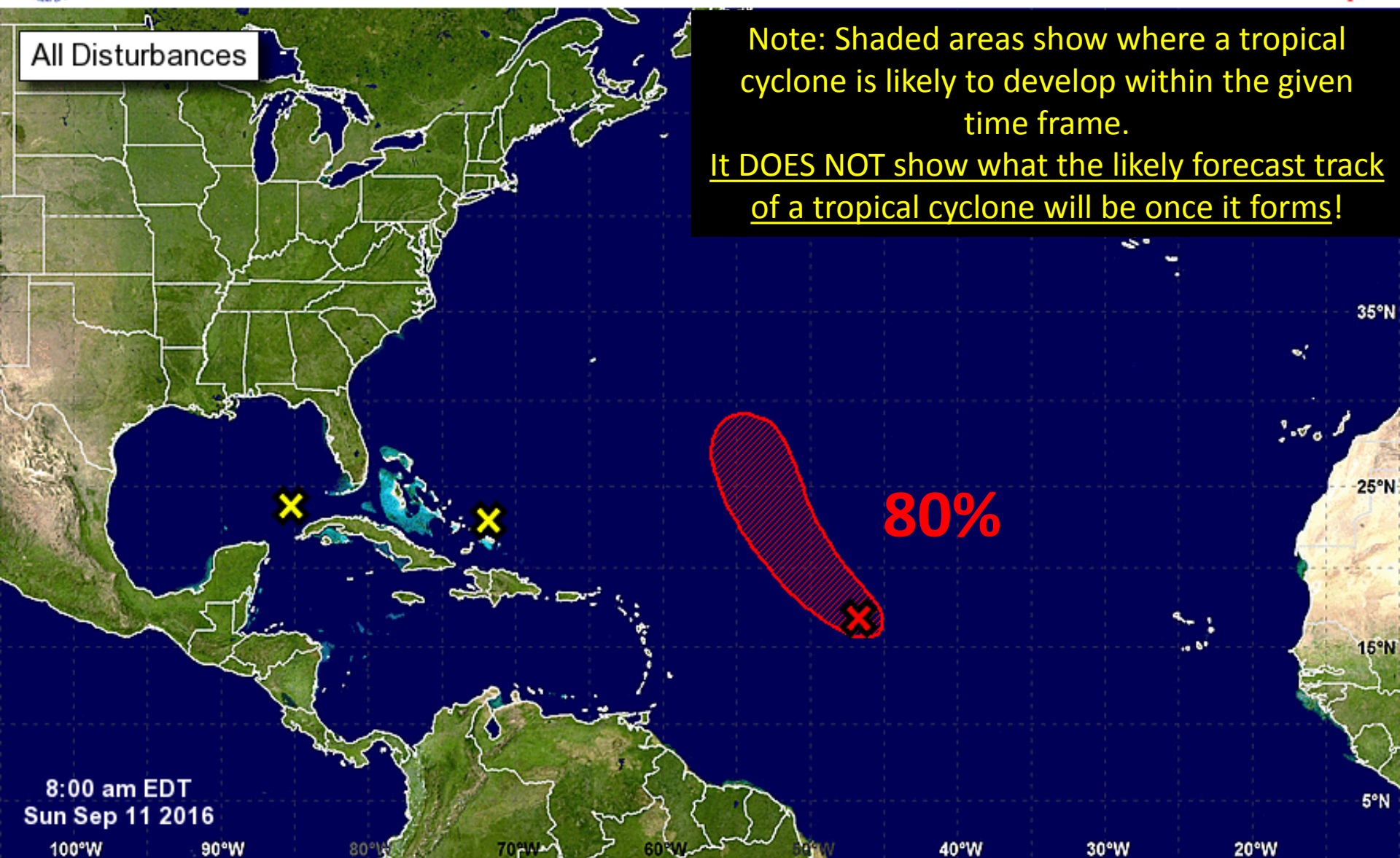
National Hurricane Center Miami, Florida



All Disturbances

Note: Shaded areas show where a tropical cyclone is likely to develop within the given time frame.

It DOES NOT show what the likely forecast track of a tropical cyclone will be once it forms!



8:00 am EDT
Sun Sep 11 2016

Tropical Cyclone Formation Potential for the Five-Day Period Ending at 8:00 am EDT Fri Sep 16 2016

Chance of Cyclone Formation in Five Days: ■ Low < 40% ■ Medium 40-60% ■ High > 60%

X indicates current disturbance location; shading indicates potential formation area.

Invest-92L

8 PM Sat Sep 10 2016

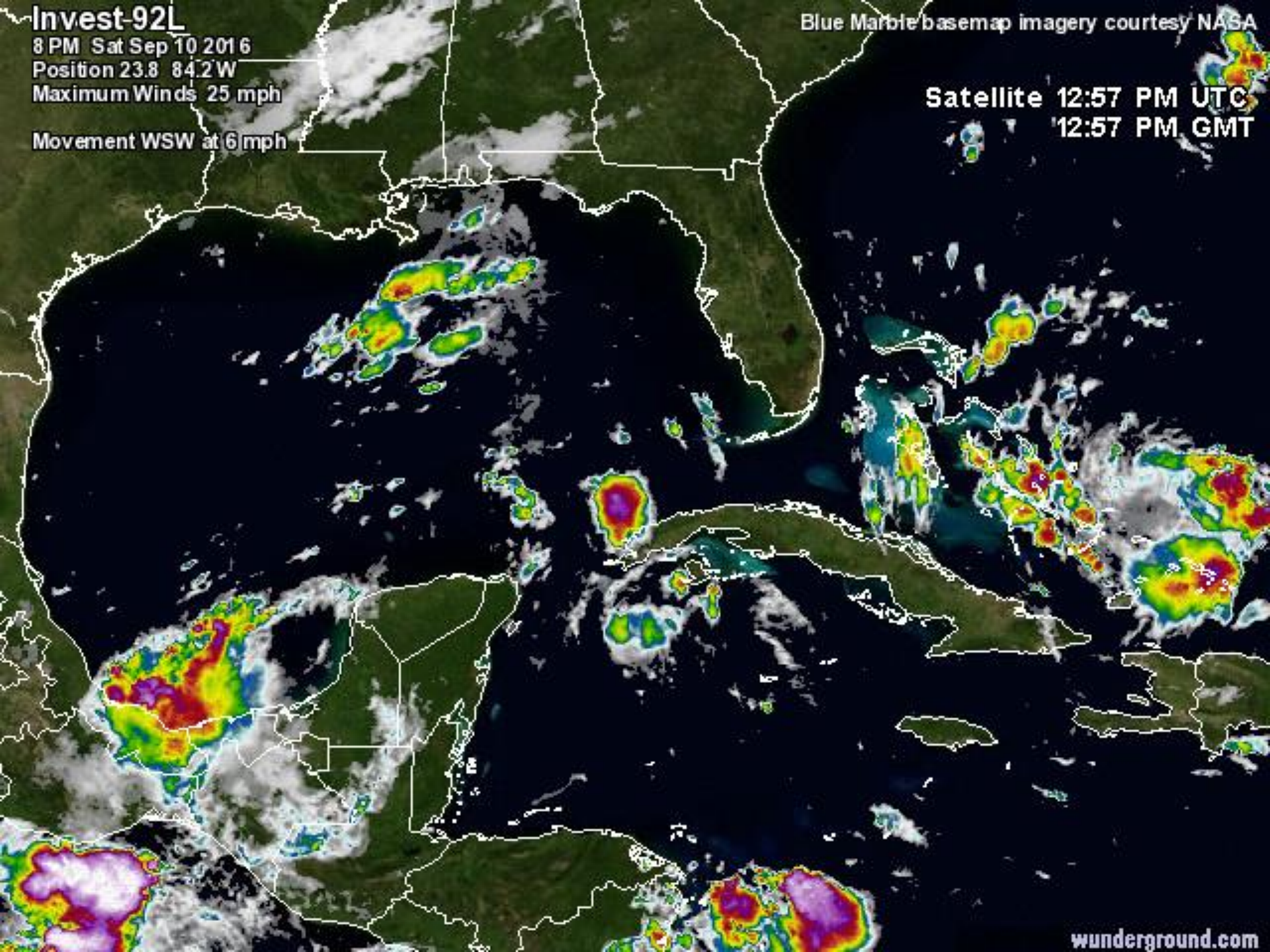
Position 23.8 84.2 W

Maximum Winds 25 mph

Movement WSW at 6mph

Blue Marble basemap imagery courtesy NASA

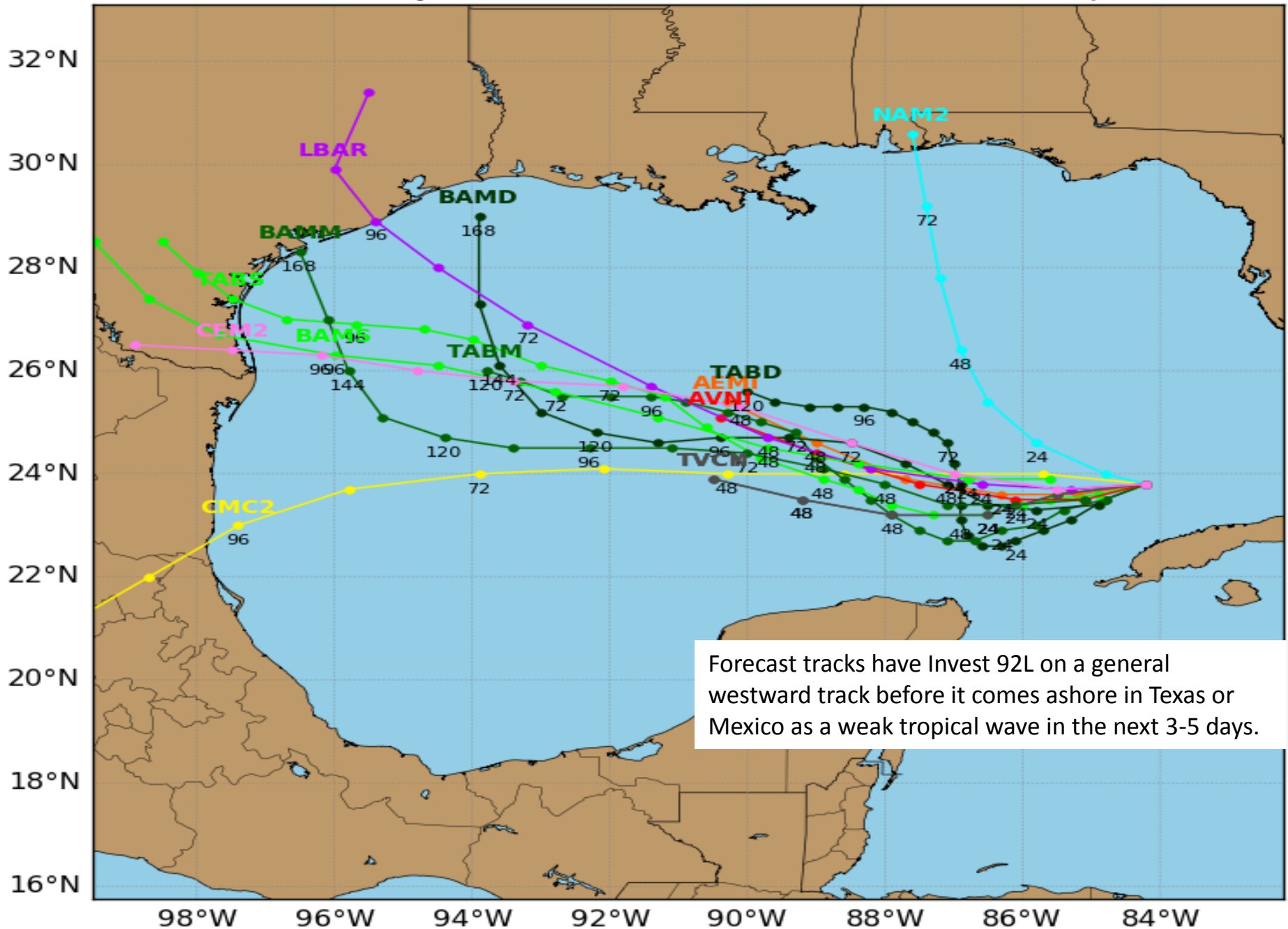
Satellite 12:57 PM UTC
12:57 PM GMT



Invest 92L Model Track Guidance

Initialized at 00z Sep 11 2016

Levi Cowan - tropicaltidbits.com



Invest:93L

8 PM Sat Sep 10 2016

Position 21.9 69.8 W

Maximum Winds 25 mph

Movement WNW at 14 mph

Blue Marble basemap imagery courtesy NASA

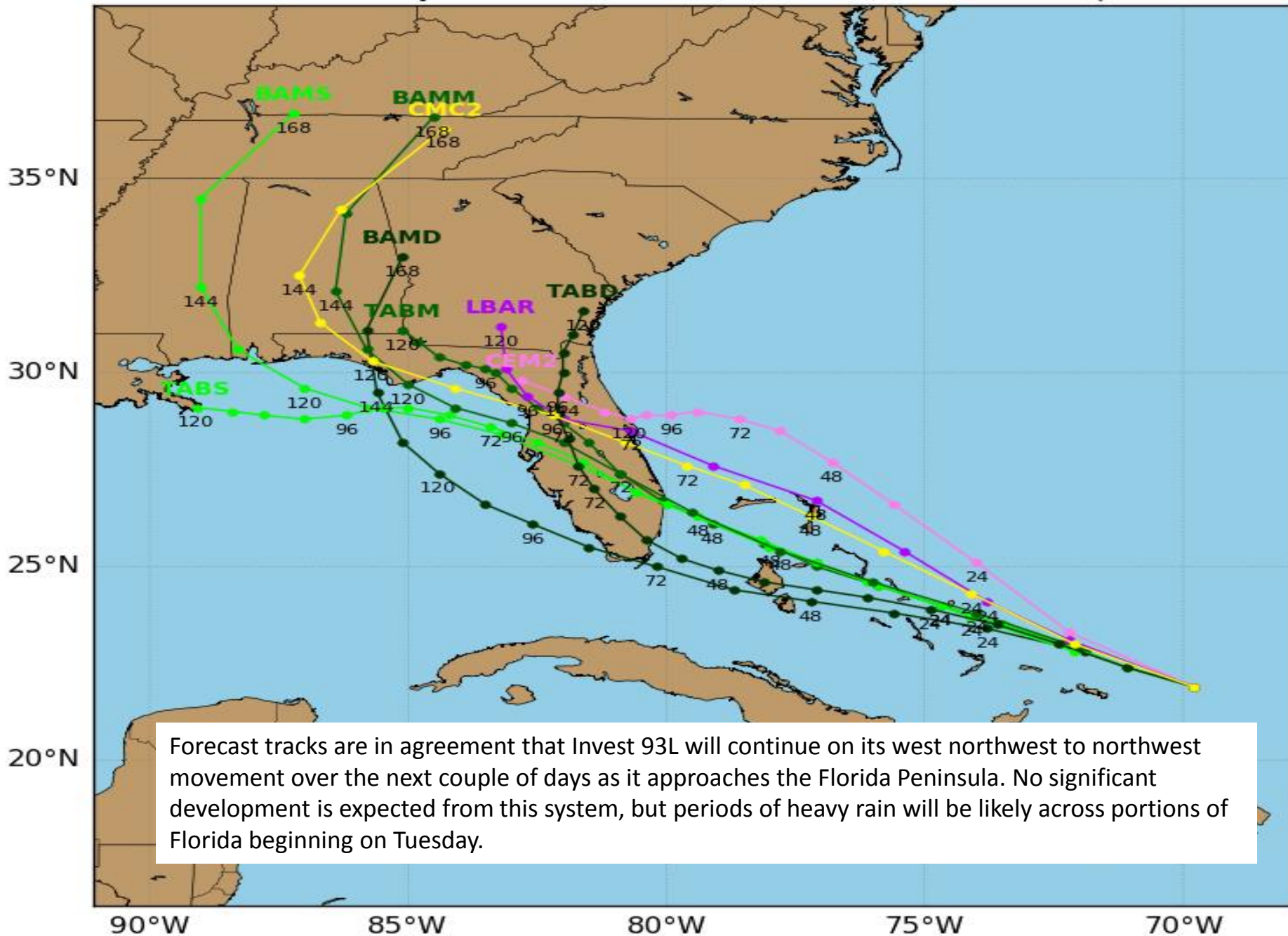
Satellite 12:59 PM UTC
12:59 PM GMT



Invest 93L Model Track Guidance

Initialized at 00z Sep 11 2016

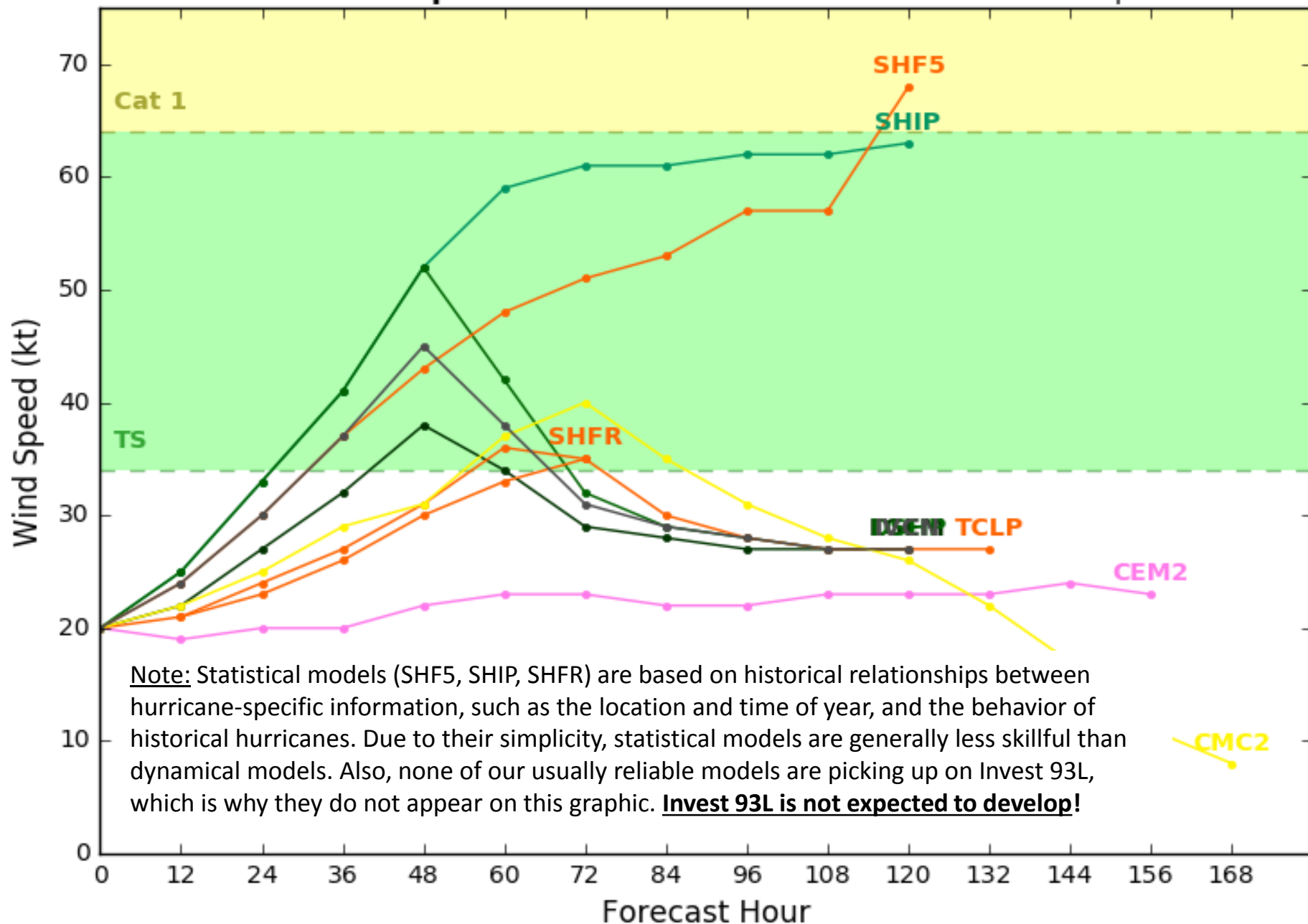
Levi Cowan - tropicaltidbits.com



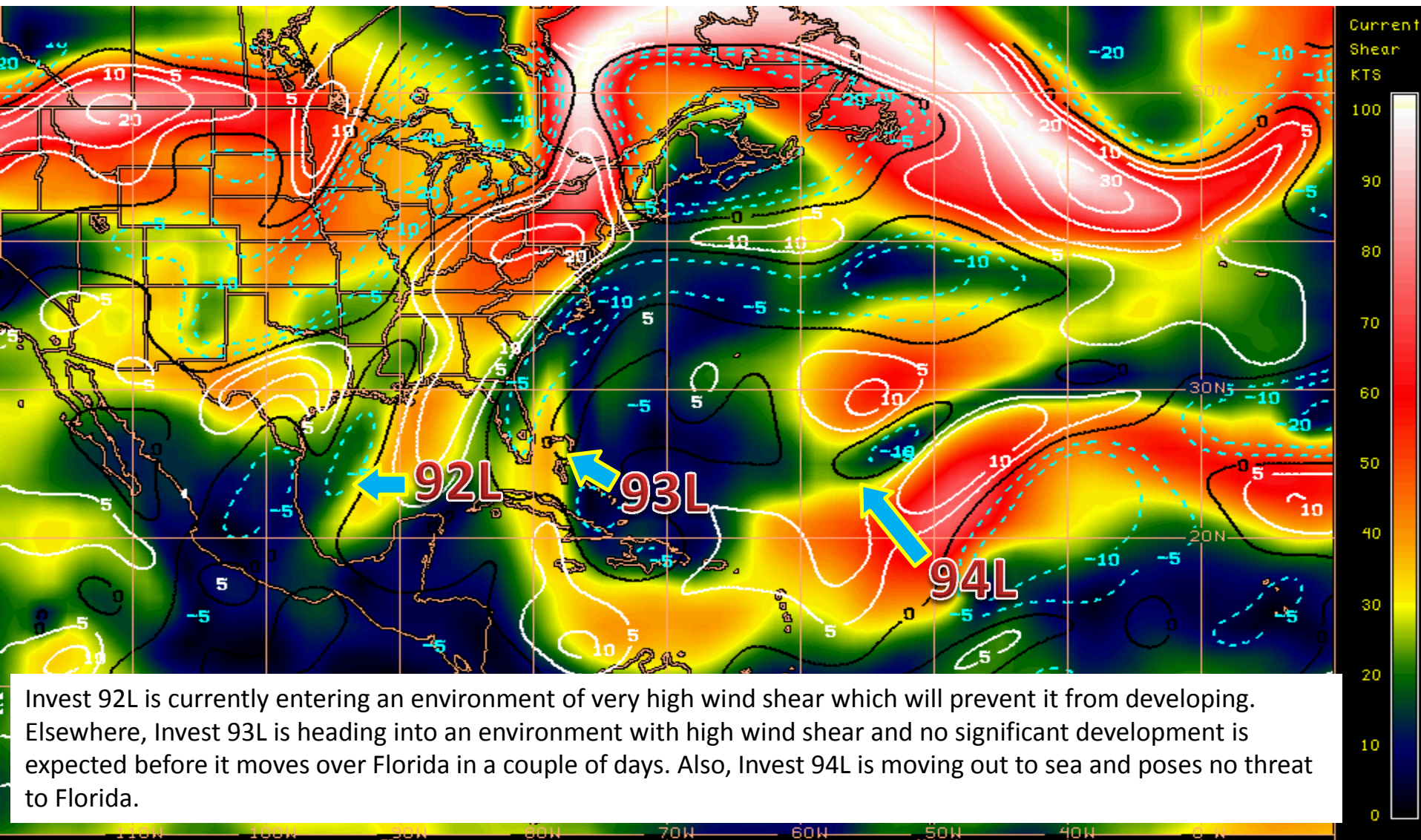
Invest 93L Model Intensity Guidance

Initialized at 00z Sep 11 2016

Levi Cowan - tropicaltidbits.com



Current Wind Shear (shaded) and Shear Tendency (contours)



Shear Tendency (KTS) Over Past 24 Hours: Increasing ——— Decreasing - - - - -

GOES-EAST 24 HOUR WIND SHEAR TENDENCY PRODUCT

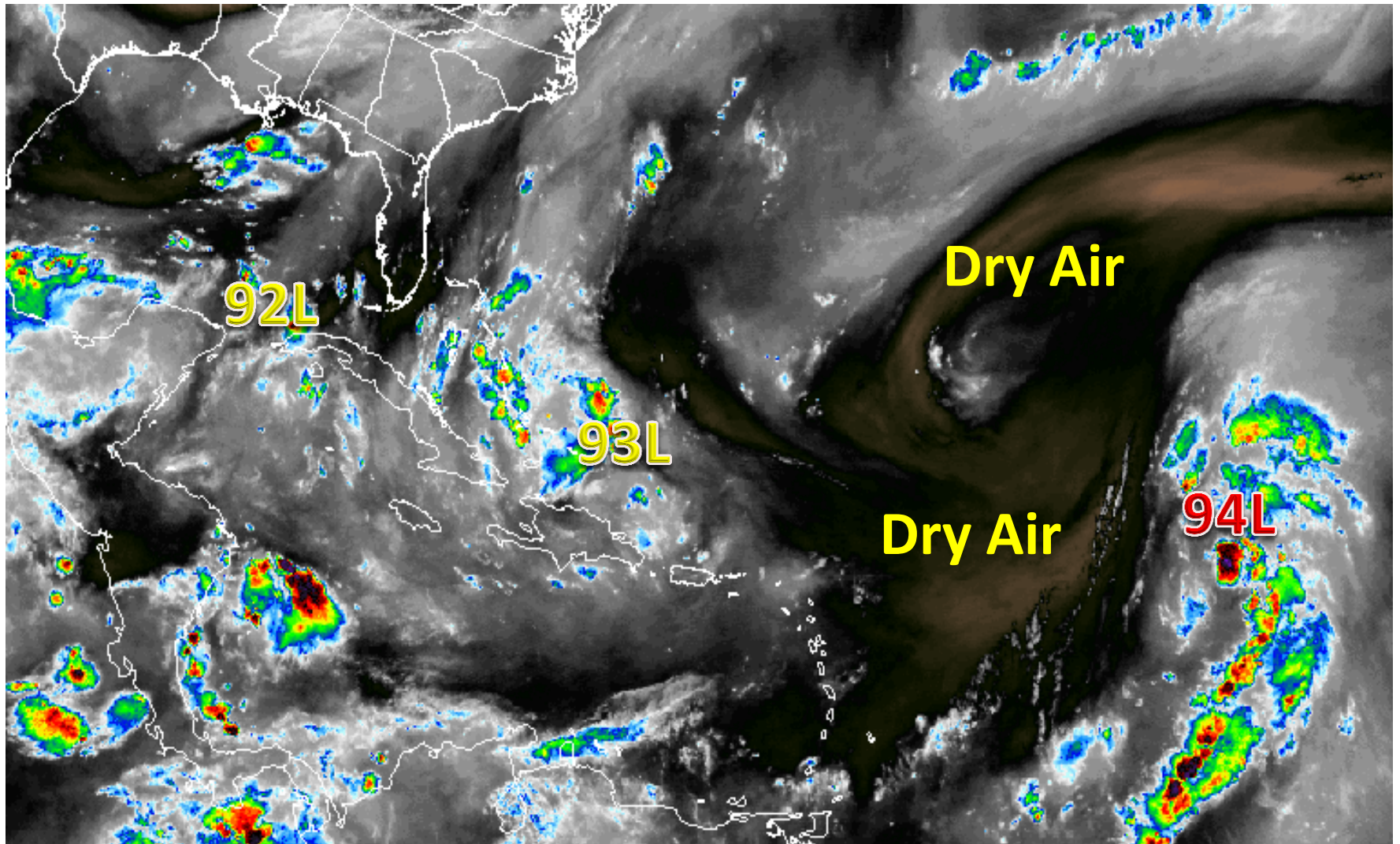
1200 UTC

11SEP16

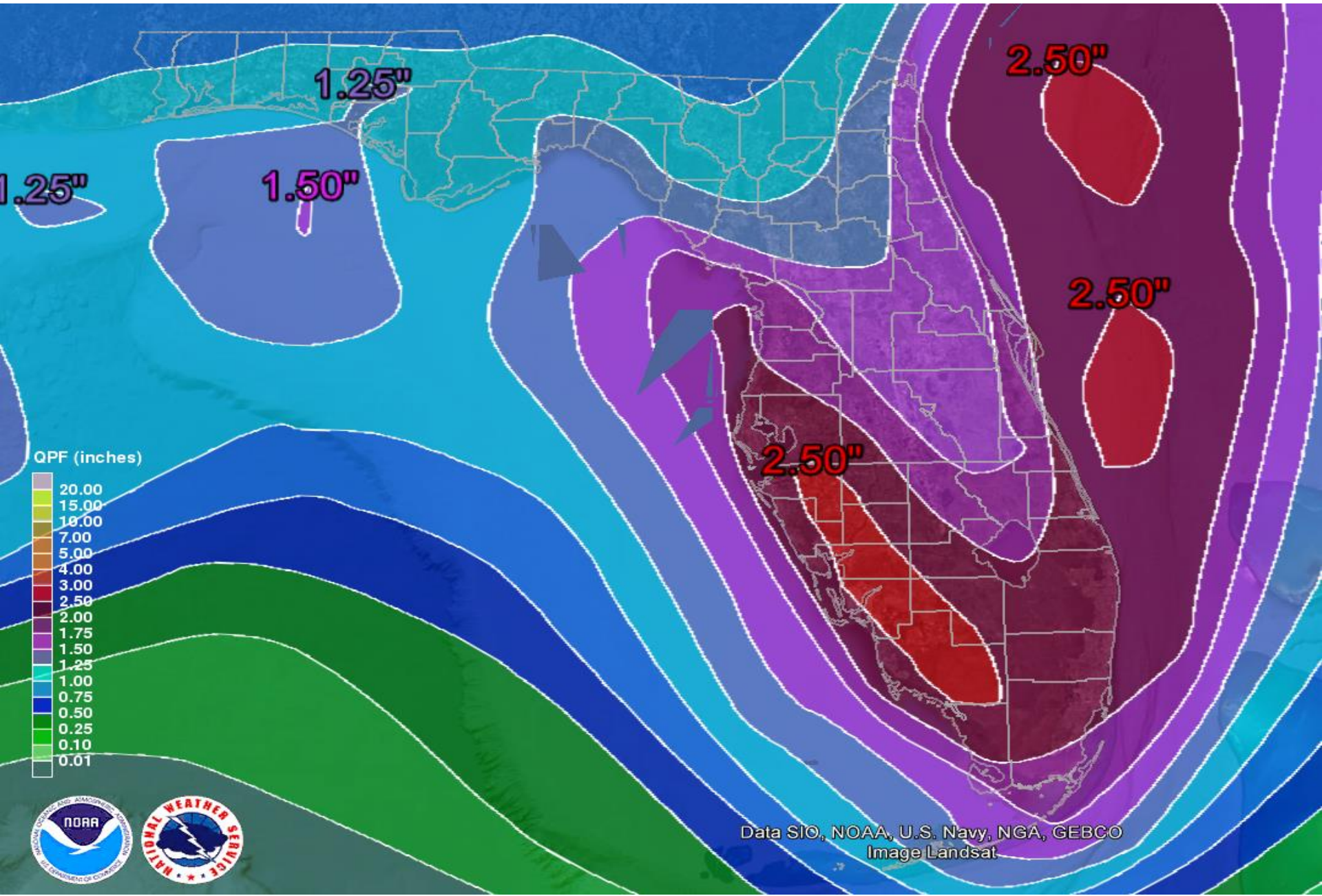
UW-CIMSS

McIDAS

Water Vapor Imagery of 92L, 93L, & 94L



Forecast Rainfall For Next 5 Days



Invest 94L

8 AM Sun Sep 11 2016

Position 16.3 47.0 W

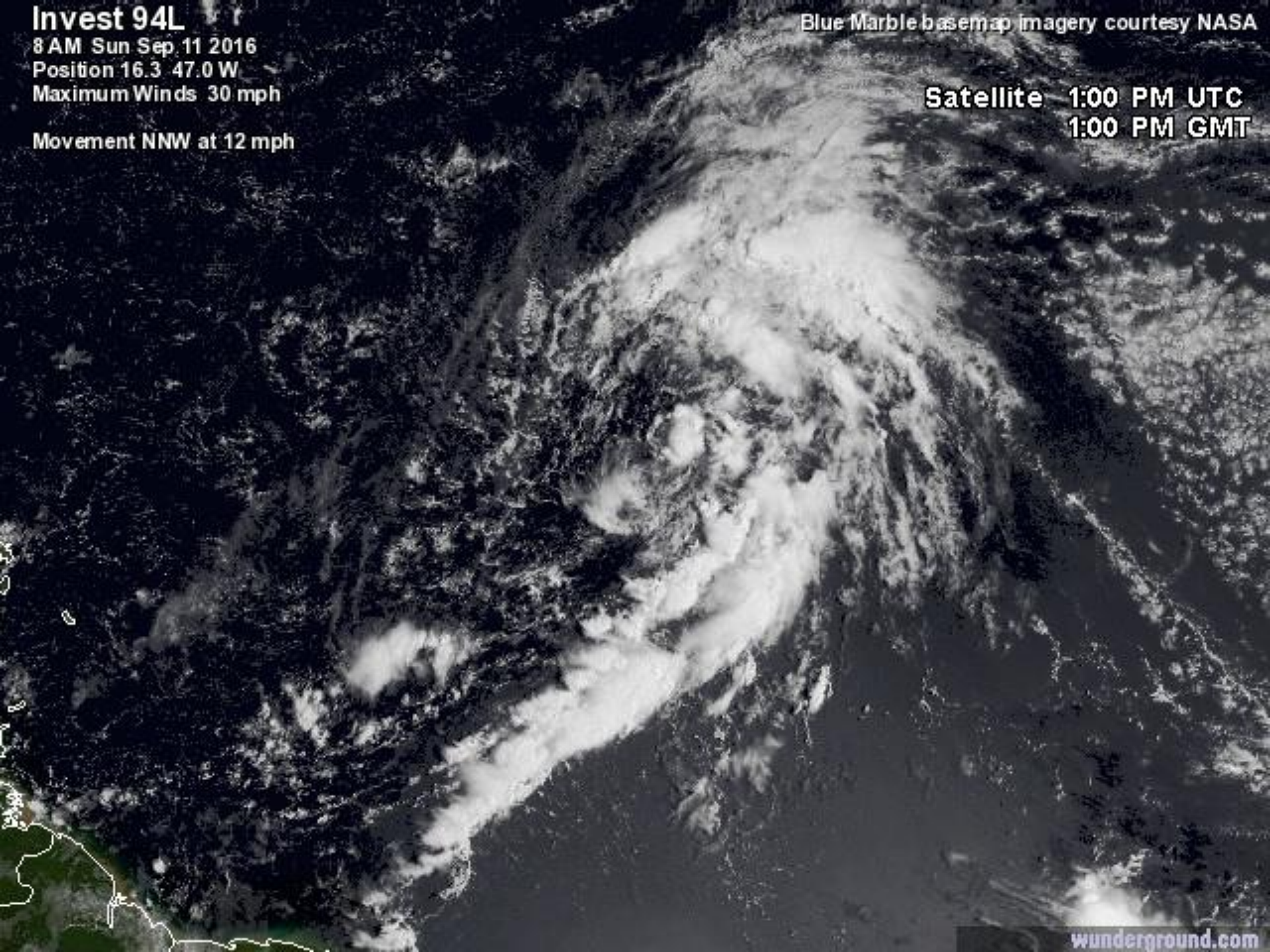
Maximum Winds 30 mph

Movement NNW at 12 mph

Blue Marble basemap imagery courtesy NASA

Satellite 1:00 PM UTC

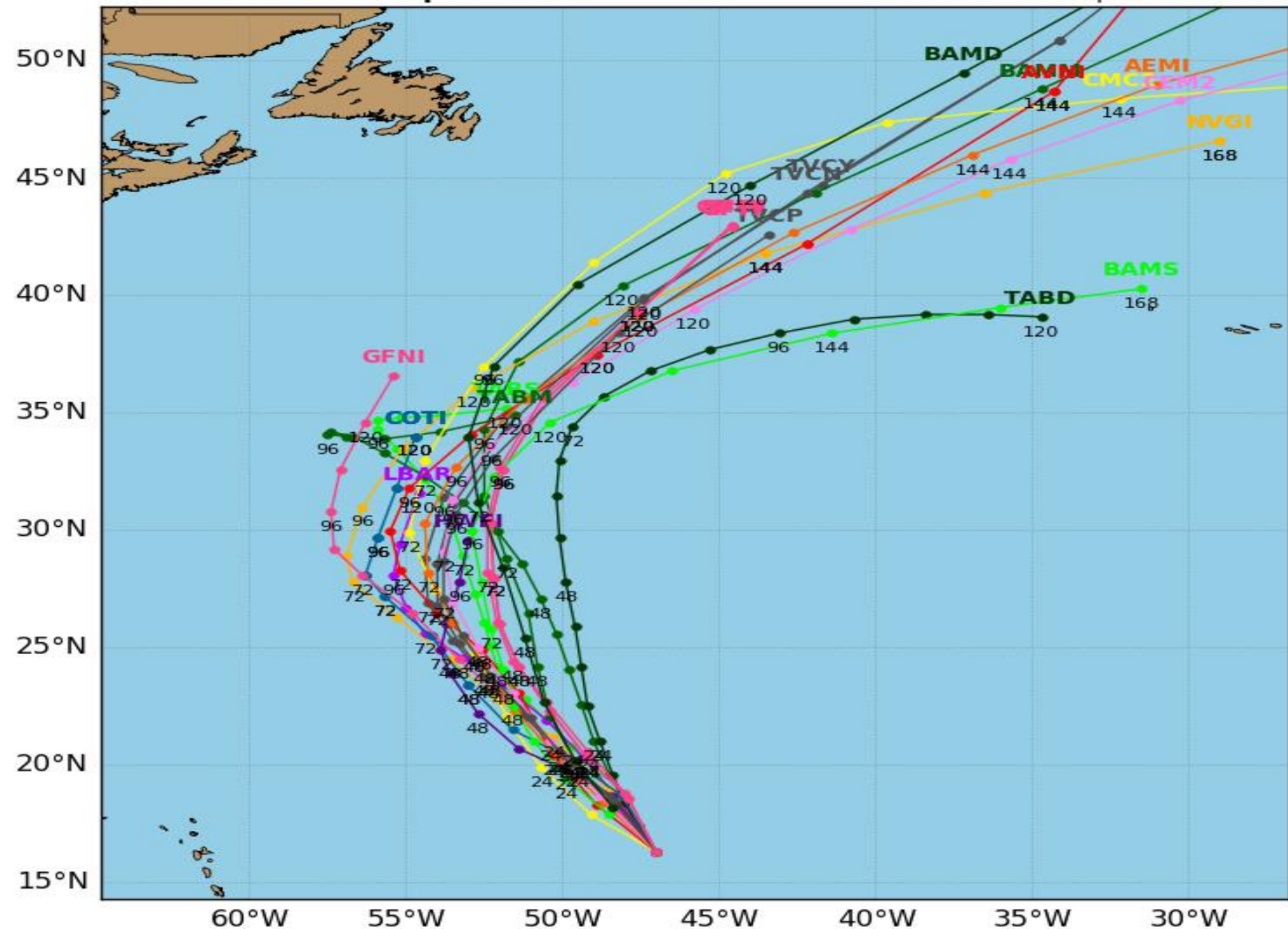
1:00 PM GMT



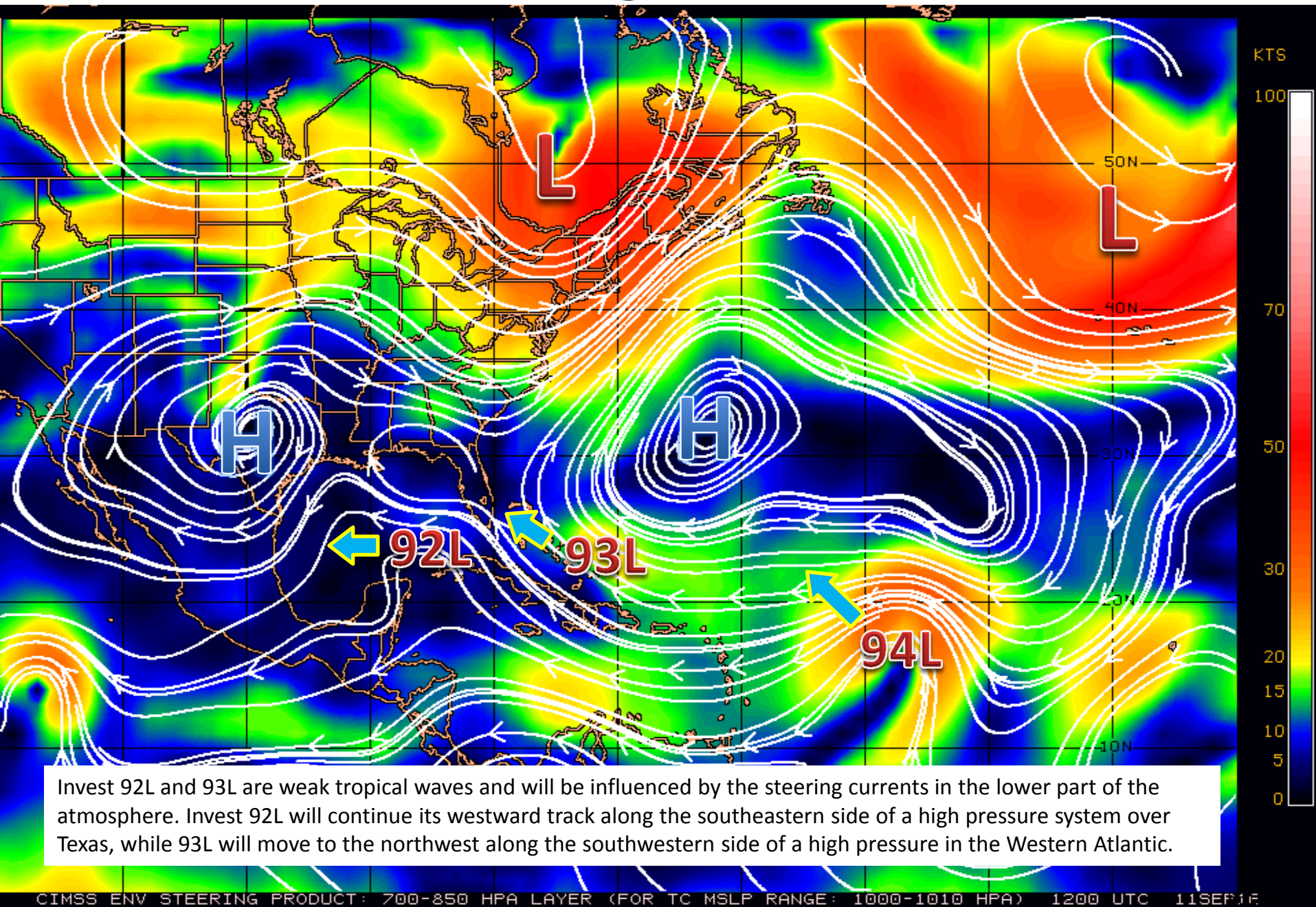
Invest 94L Model Track Guidance

Initialized at 12z Sep 11 2016

Levi Cowan - tropicaltidbits.com



Steering Currents



Tropical Summary:

- A few showers and thunderstorms have re-formed near **Invest 92L** located over southeastern Gulf of Mexico.
- However, upper-level winds will not be conducive for development of this system while it moves generally westward across the Gulf of Mexico during the next few days at 5 to 10 mph.
- Invest 92L has a 0% (none) chance of tropical development.
- Showers and thunderstorms have increased with **Invest 93L** located near the southeastern Bahamas. However, there are still no signs of a surface circulation, and conditions do not appear conducive for significant development of this disturbance while it moves west-northwestward towards Florida at 10 to 15 mph.
- Invest 93L has a 0% (none) chance of tropical development.
- **Invest 94L** is located about 1000 miles east of the Leeward Islands is producing a large area of cloudiness and showers, but it currently has limited thunderstorm activity near the center of circulation.
- However, a tropical depression is still likely to form later today or on Monday before upper-level winds become less conducive for development. The low is expected to move northwestward or north-northwestward at 10 to 15 mph over the central Atlantic Ocean during the next few days.
- Invest 94L has a 70% (high) chance of development in the next 48 hours, and an 80% (high) chance of development through the next five days.

Florida Outlook:

- Invest 92L and 94L do not pose any threat to Florida.
- Invest 93L is likely to bring periods of heavy downpours and gusty winds to portions of Florida on Tuesday.
- Some areas may see 2-3 inches of rain over the next five days.

Another briefing packet will be issued on Monday morning. For more information on this system, please visit the NHC website at www.nhc.noaa.gov



TROPICAL UPDATE

Created by:

Kevin Rodriguez, Deputy State Meteorologist

Kevin.Rodriguez@em.myflorida.com

State Meteorological Support Unit

Florida Division of Emergency
Management