



TROPICAL UPDATE

11 AM EDT

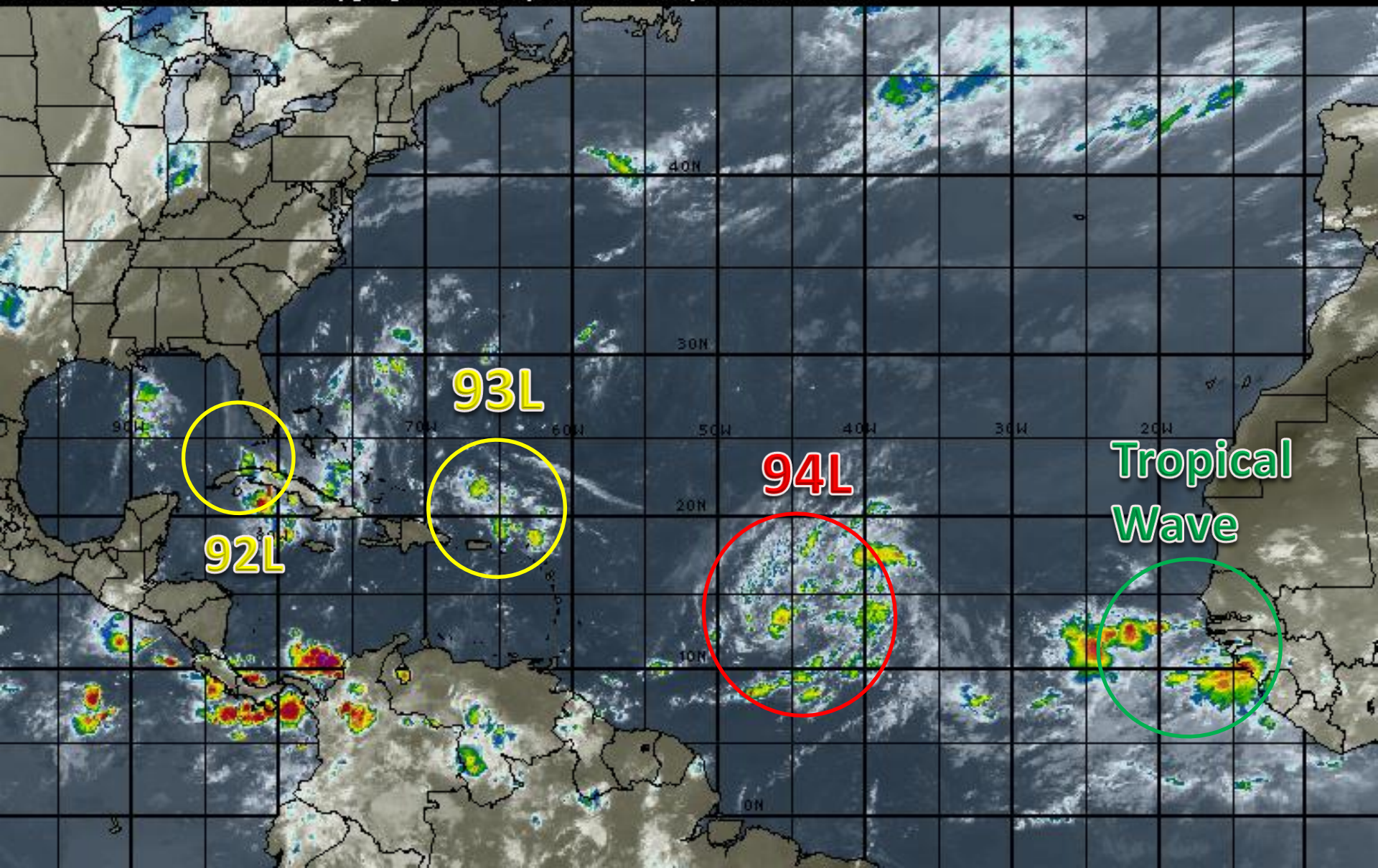
Saturday, September 10, 2016

**Invests 92L (10%), 93L (10%), & 94L
(90%)**

This update is intended for government and emergency response officials, and is provided for informational and situational awareness purposes only. Forecast conditions are subject to change based on a variety of environmental factors. For additional information, or for any life safety concerns with an active weather event please contact your County Emergency Management or Public Safety Office, local National Weather Service forecast office or visit the National Hurricane Center website at www.nhc.noaa.gov.

Atlantic Basin Satellite Image

12:00 10-SEP-2016 GMT ©Copyright WSI Corporation <http://www.wsi.com>





Two-Day Graphical Tropical Weather Outlook

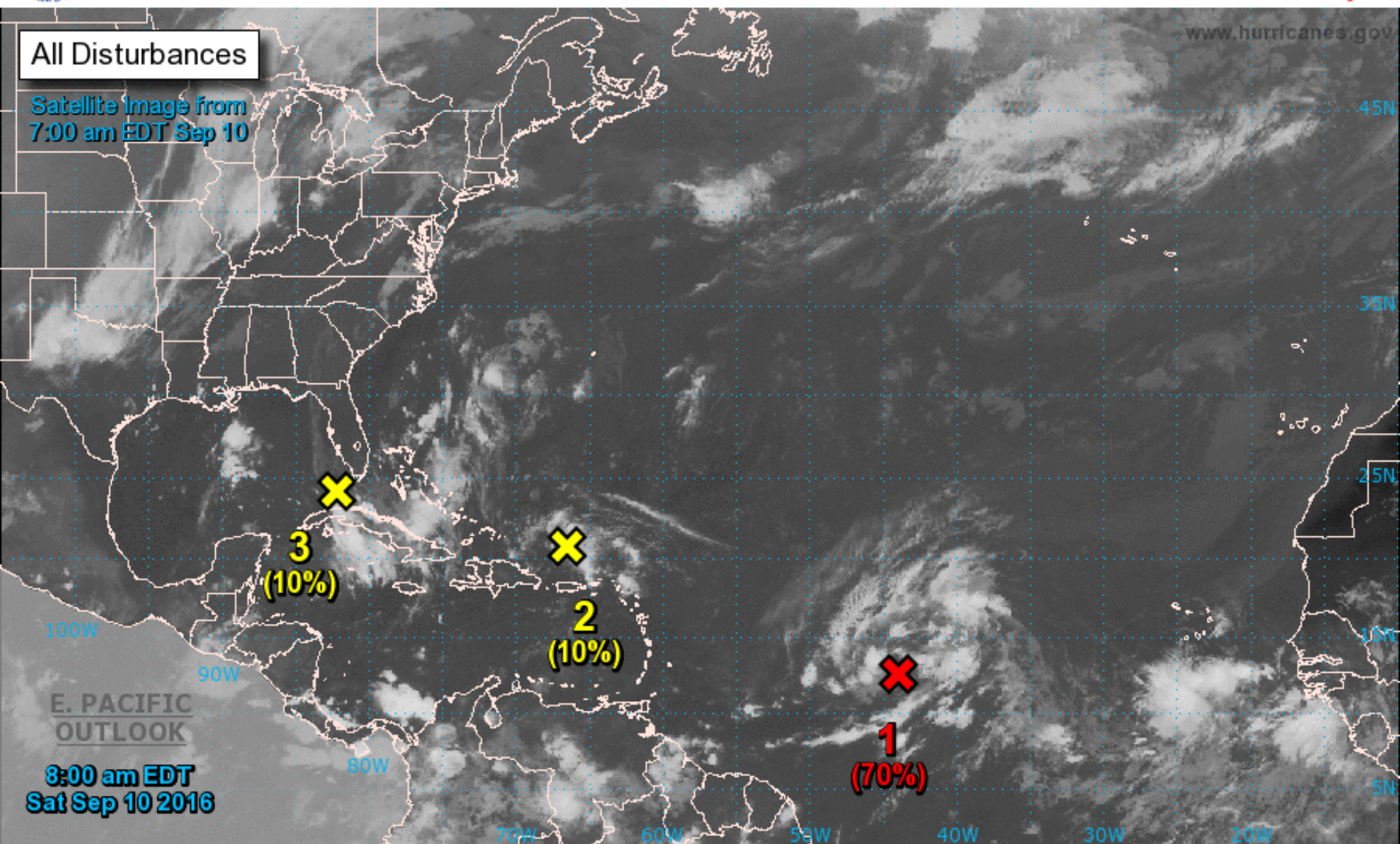
National Hurricane Center Miami, Florida



All Disturbances

Satellite Image from
7:00 am EDT Sep 10

www.hurricanes.gov



8:00 am EDT
Sat Sep 10 2016

Current Disturbances and Two-Day Cyclone Formation Chance: < 40% 40-60% > 60%

Tropical or Sub-Tropical Cyclone: Depression Storm Hurricane

Post-Tropical Cyclone Remnants

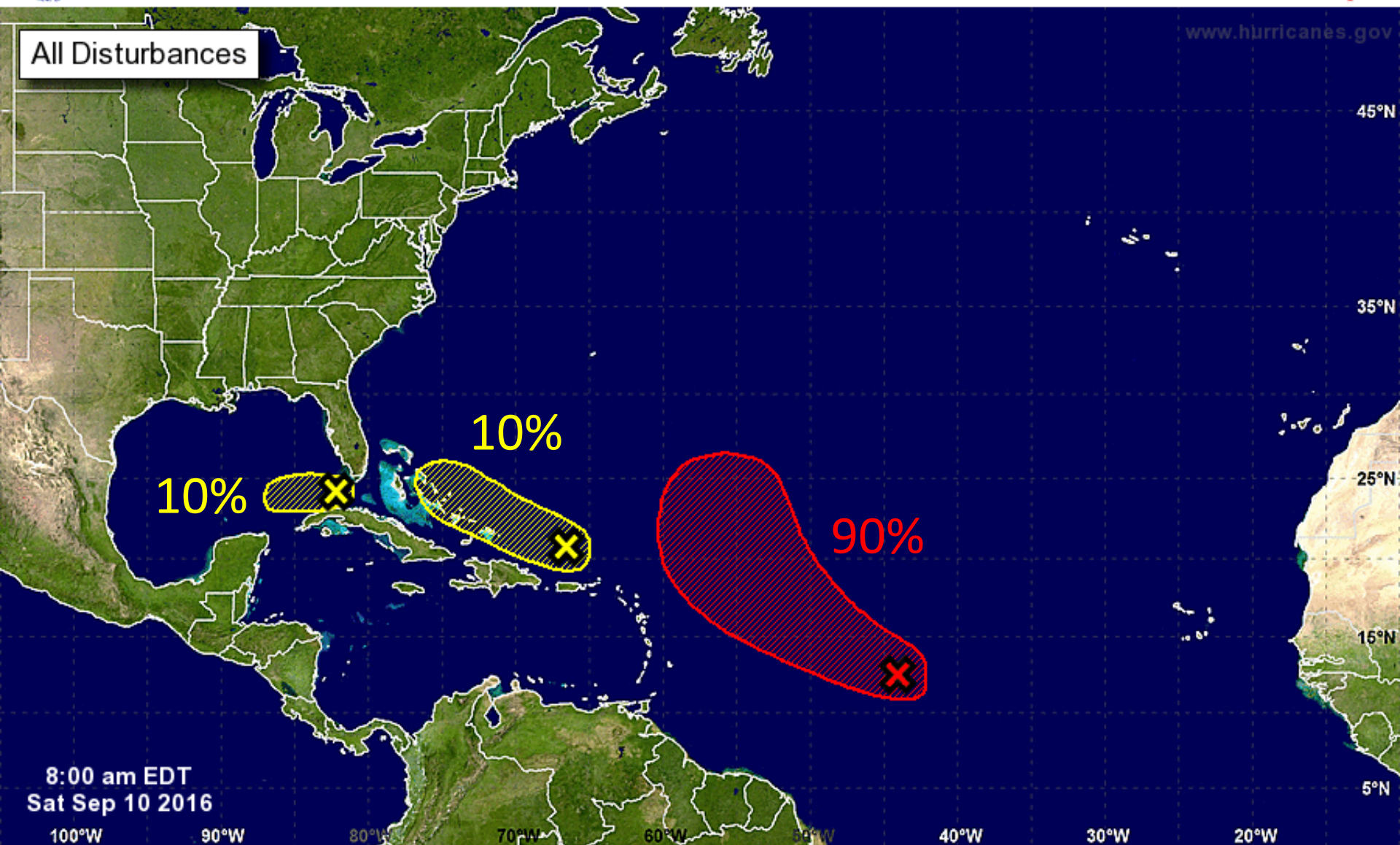


Five-Day Graphical Tropical Weather Outlook

National Hurricane Center Miami, Florida



www.hurricanes.gov



Tropical Cyclone Formation Potential for the Five-Day Period Ending at 8:00 am EDT Thu Sep 15 2016

Chance of Cyclone Formation in Five Days: ■ Low < 40% ■ Medium 40-60% ■ High > 60%

X indicates current disturbance location; shading indicates potential formation area.

Invest 92L

8 AM, Sat Sep 10 2016

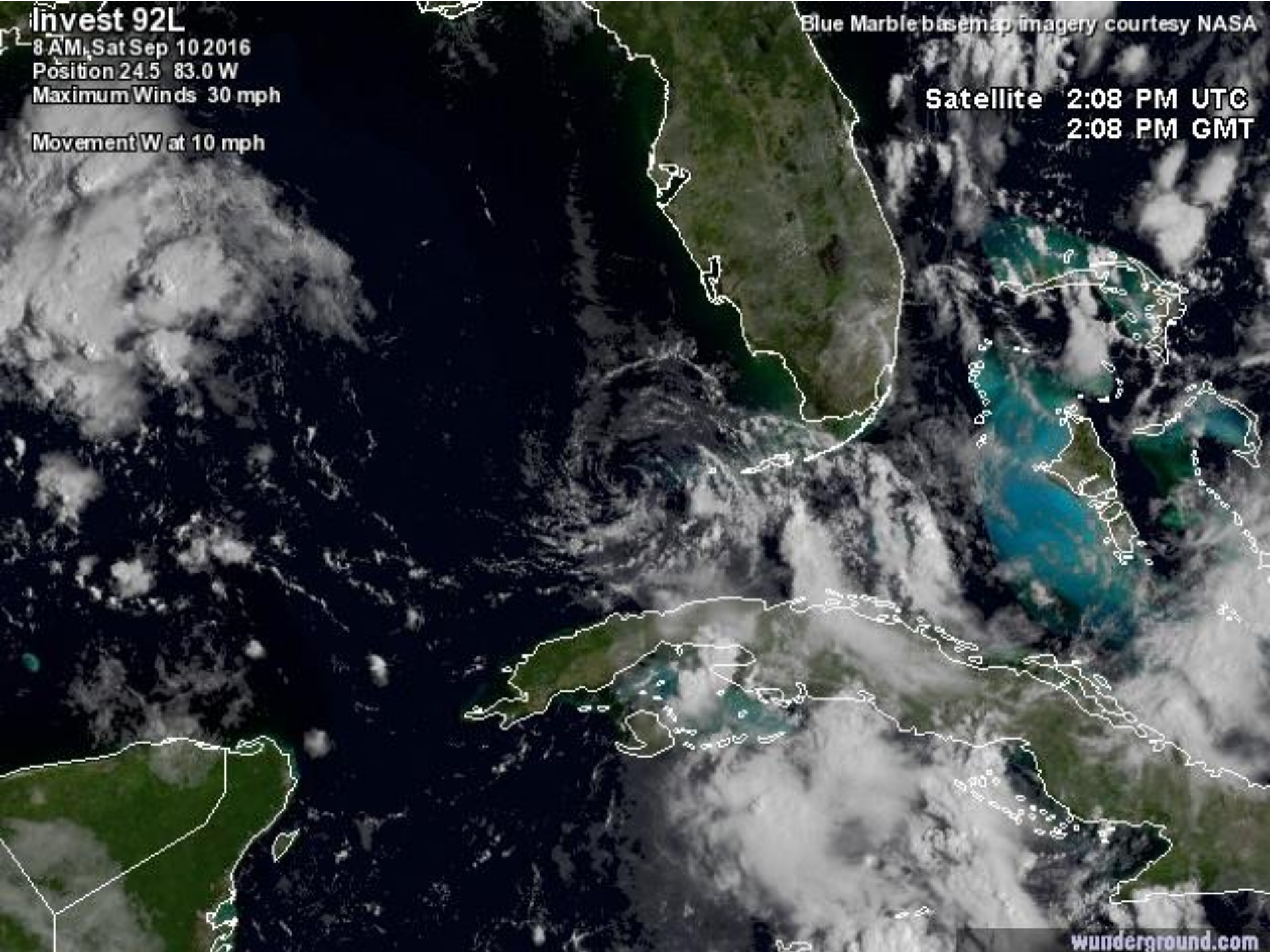
Position 24.5 83.0 W

Maximum Winds 30 mph

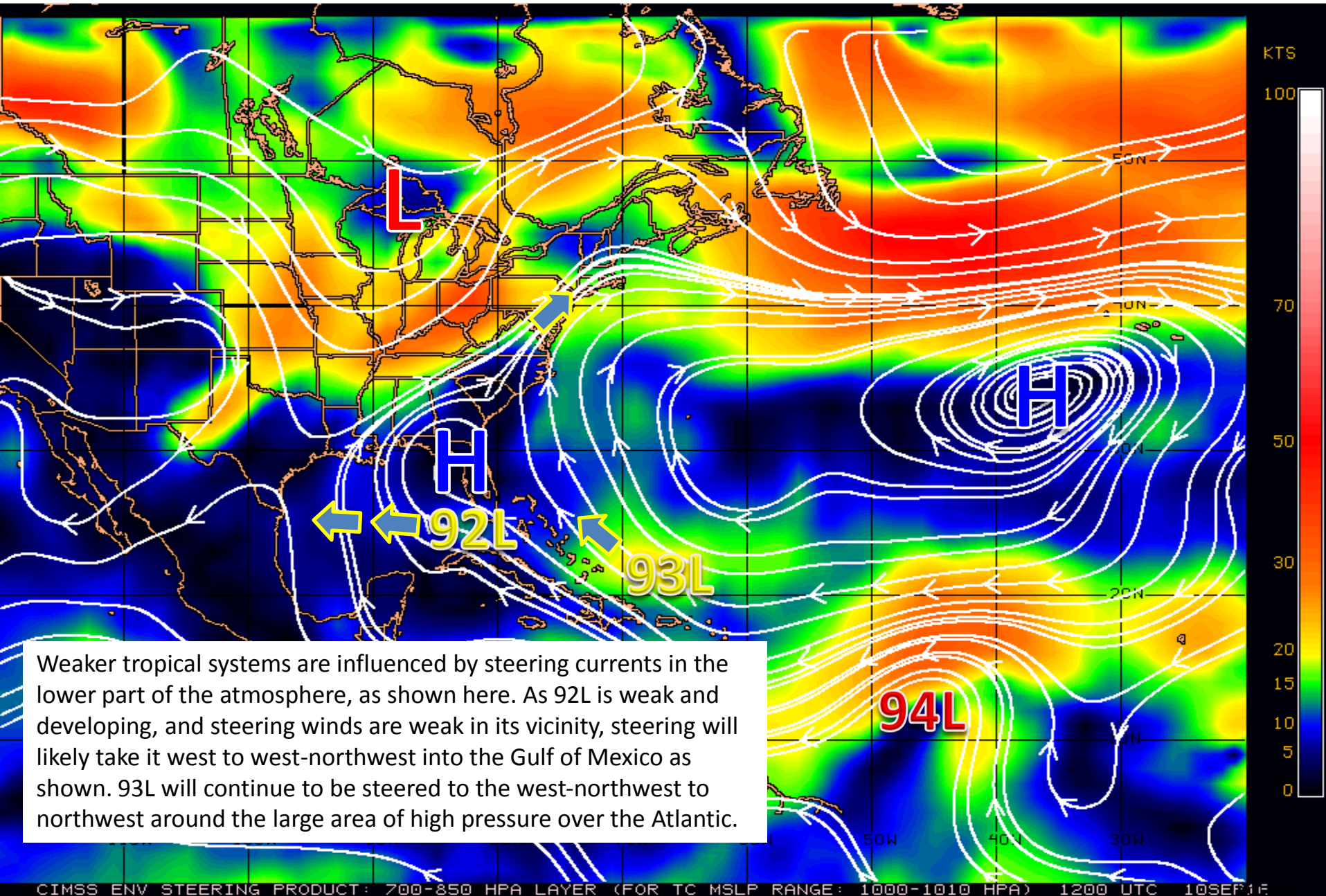
Movement W at 10 mph

Blue Marble basemap imagery courtesy NASA

Satellite 2:08 PM UTC
2:08 PM GMT



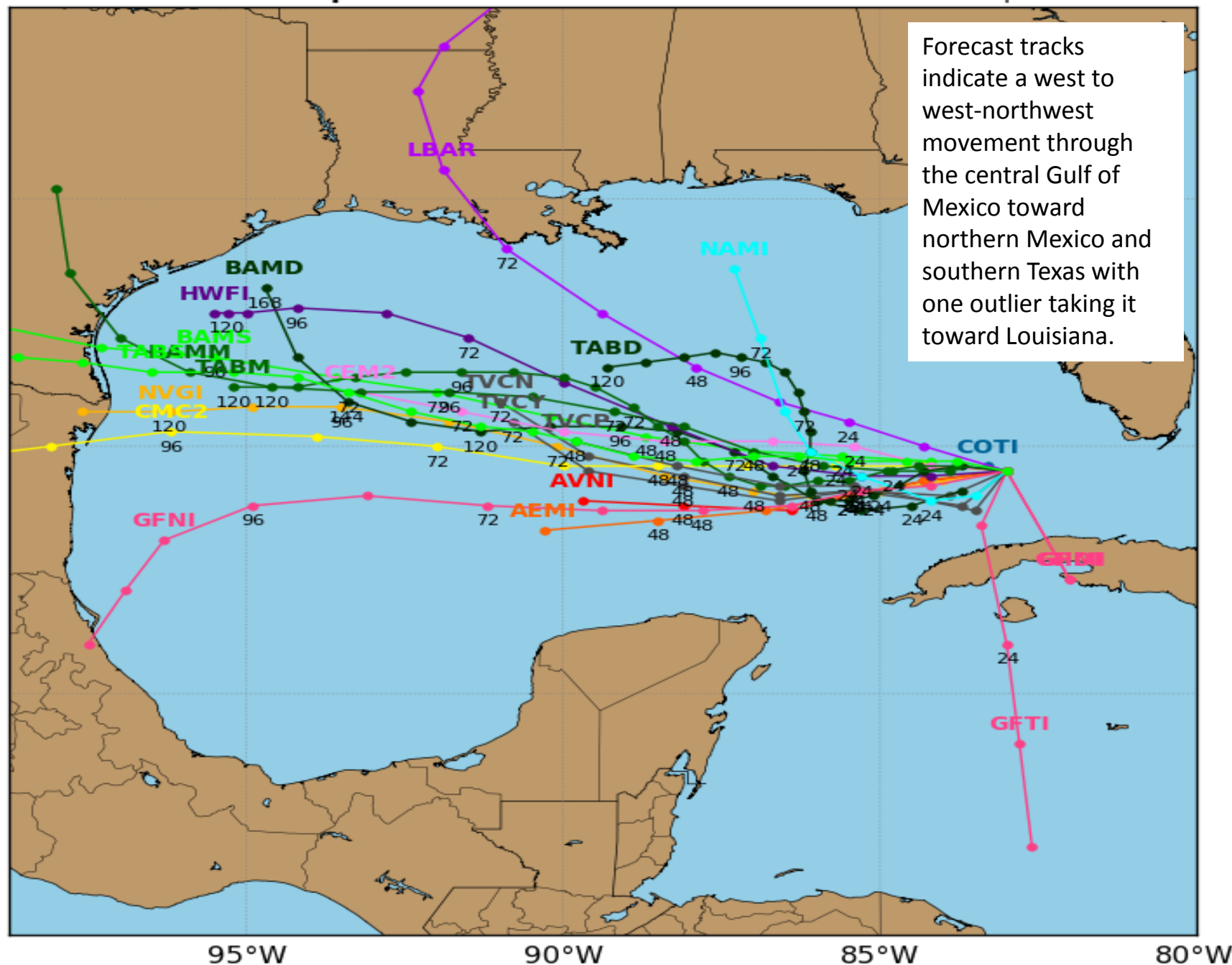
Steering Currents



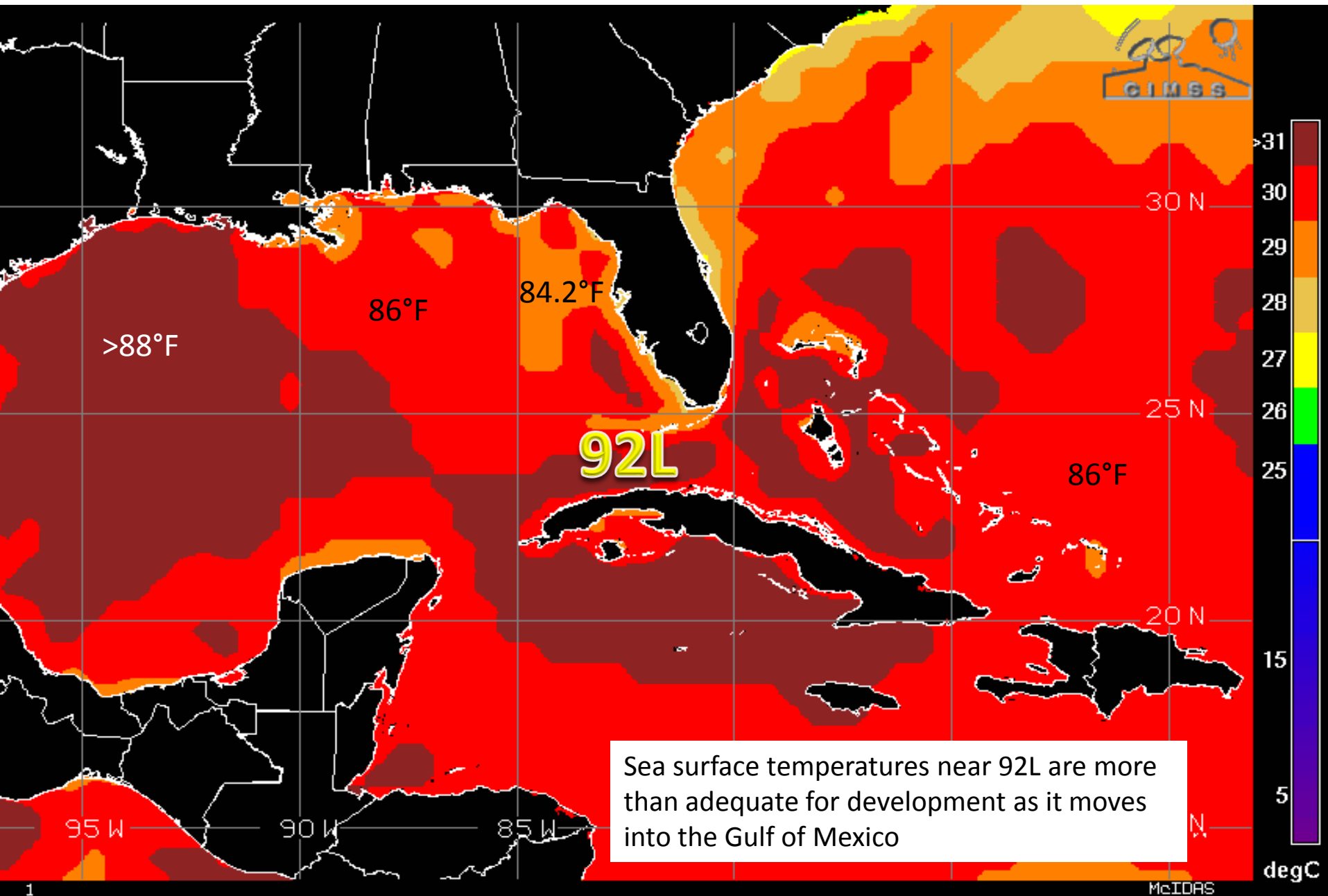
Invest 92L Model Track Guidance

Initialized at 12z Sep 10 2016

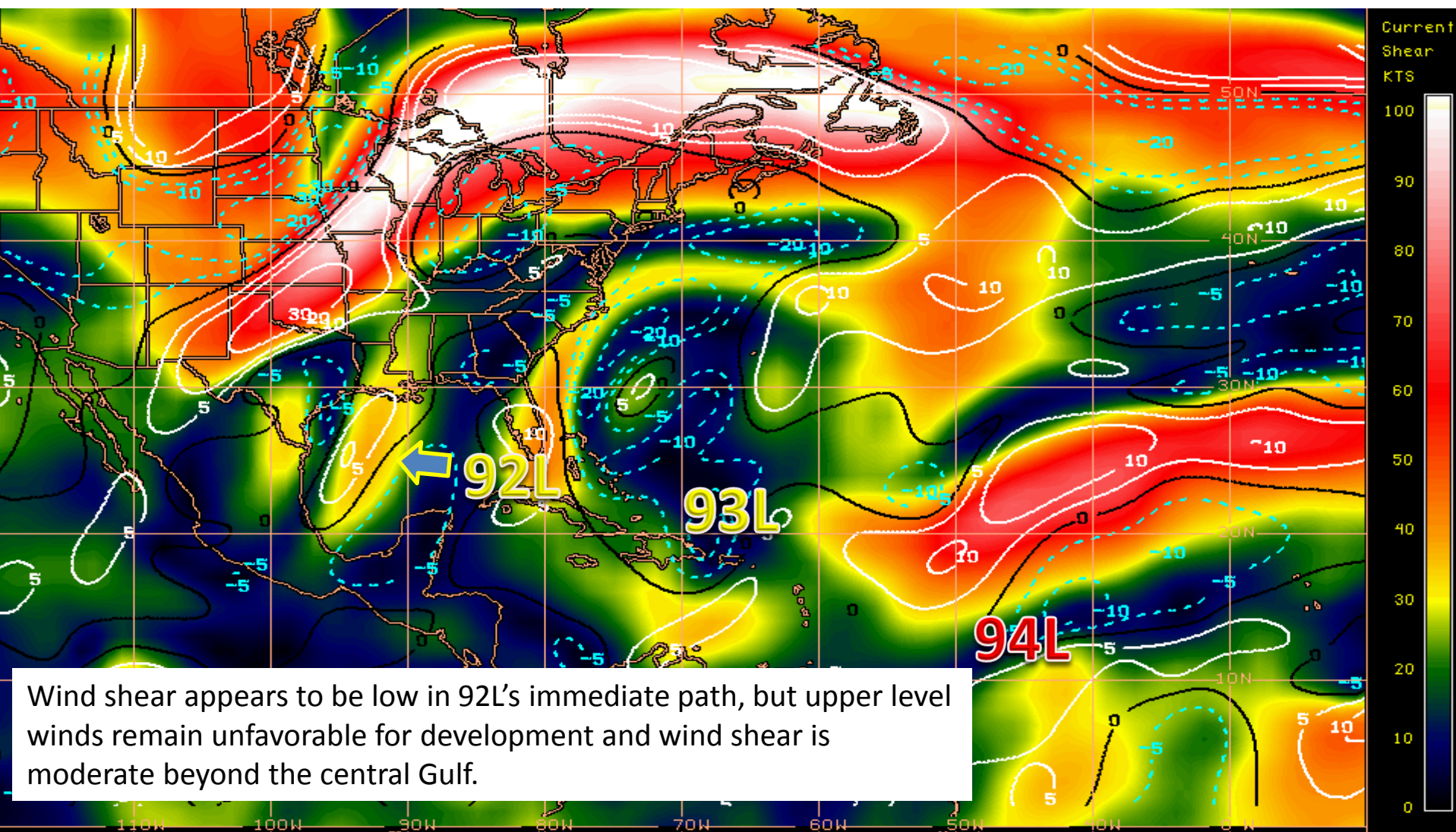
Levi Cowan - tropicaltidbits.com



Sea Surface Temperatures Near 92L



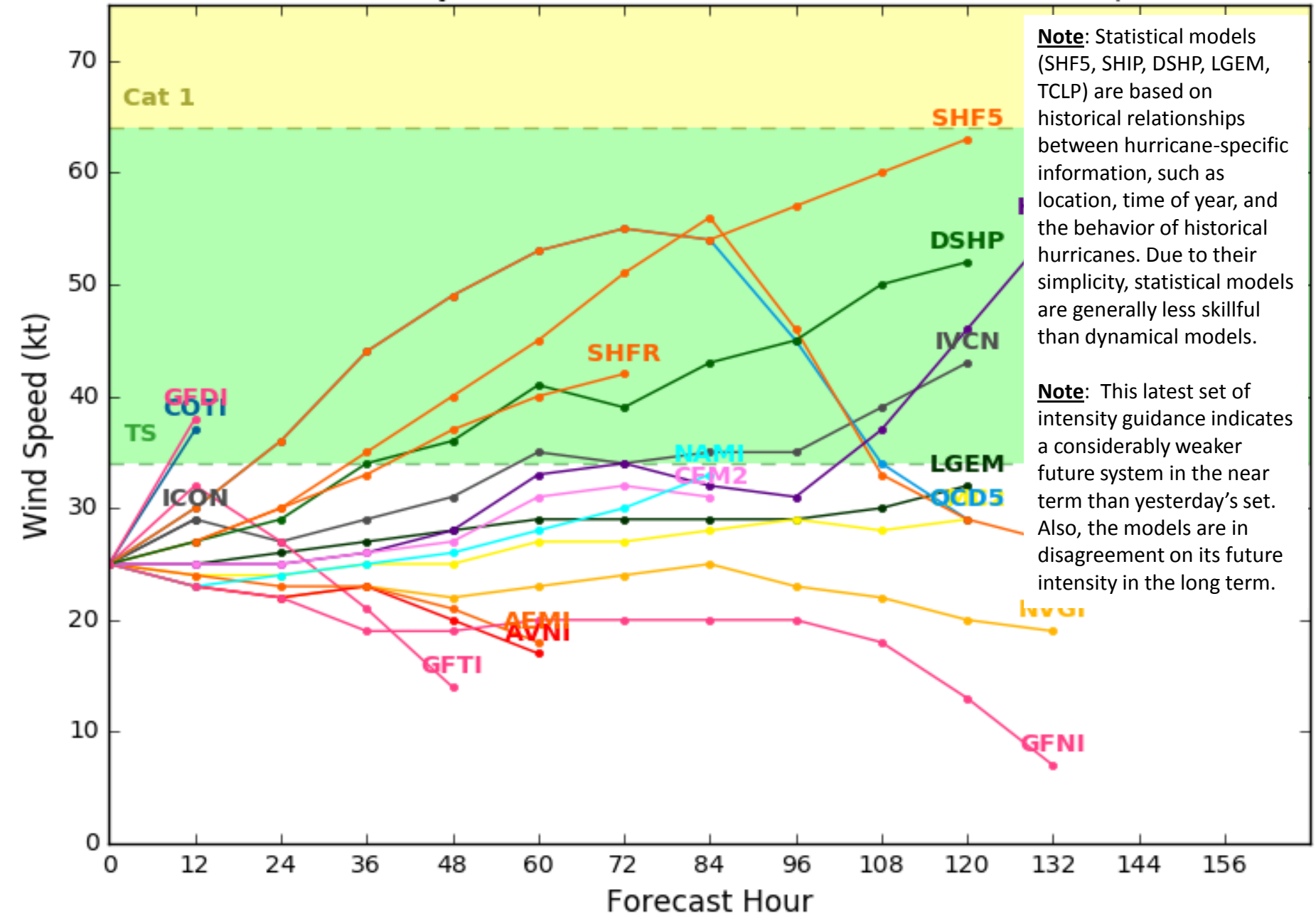
Current Wind Shear (Shaded) and Shear Tendency (Lines)



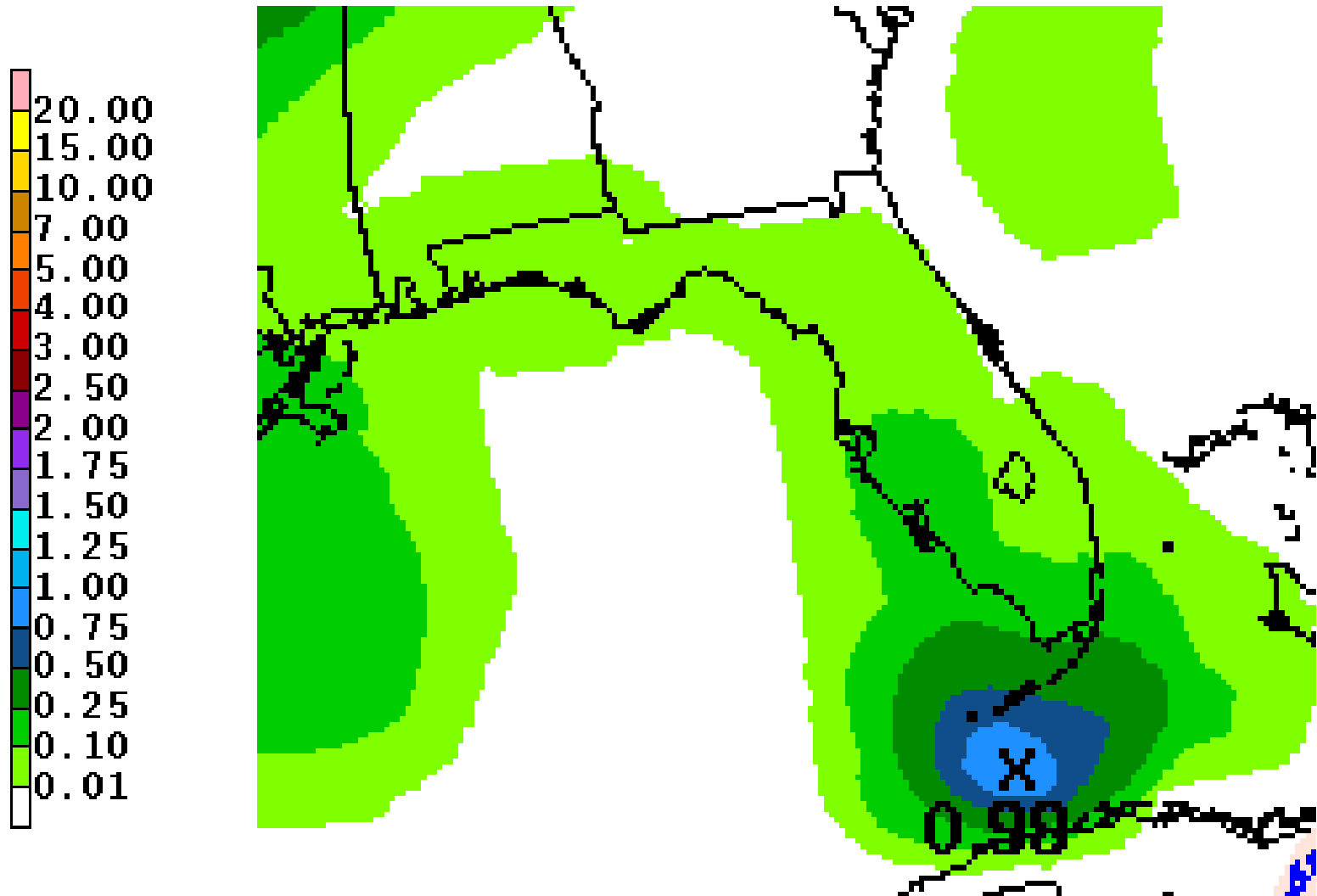
Shear Tendency (KTS) Over Past 24 Hours: Increasing — Decreasing ----

Initialized at 12z Sep 10 2016

Levi Cowan - tropicaltidbits.com



Today's Rainfall Forecast



Invest 93L

8 AM Sat Sep 10 2016

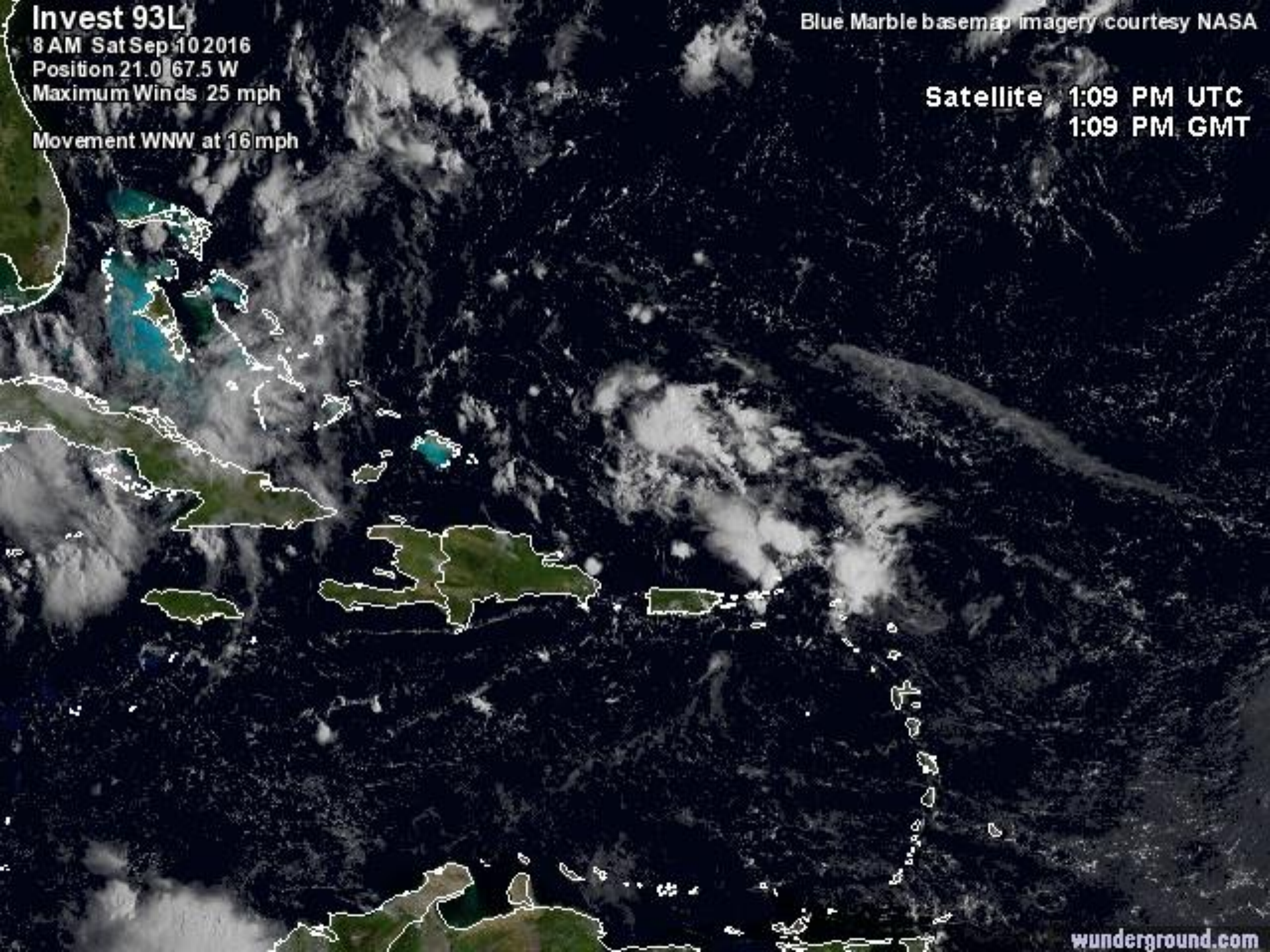
Position 21.0 67.5 W

Maximum Winds 25 mph

Movement WNW at 16 mph

Blue Marble basemap imagery courtesy NASA

Satellite 1:09 PM UTC
1:09 PM GMT

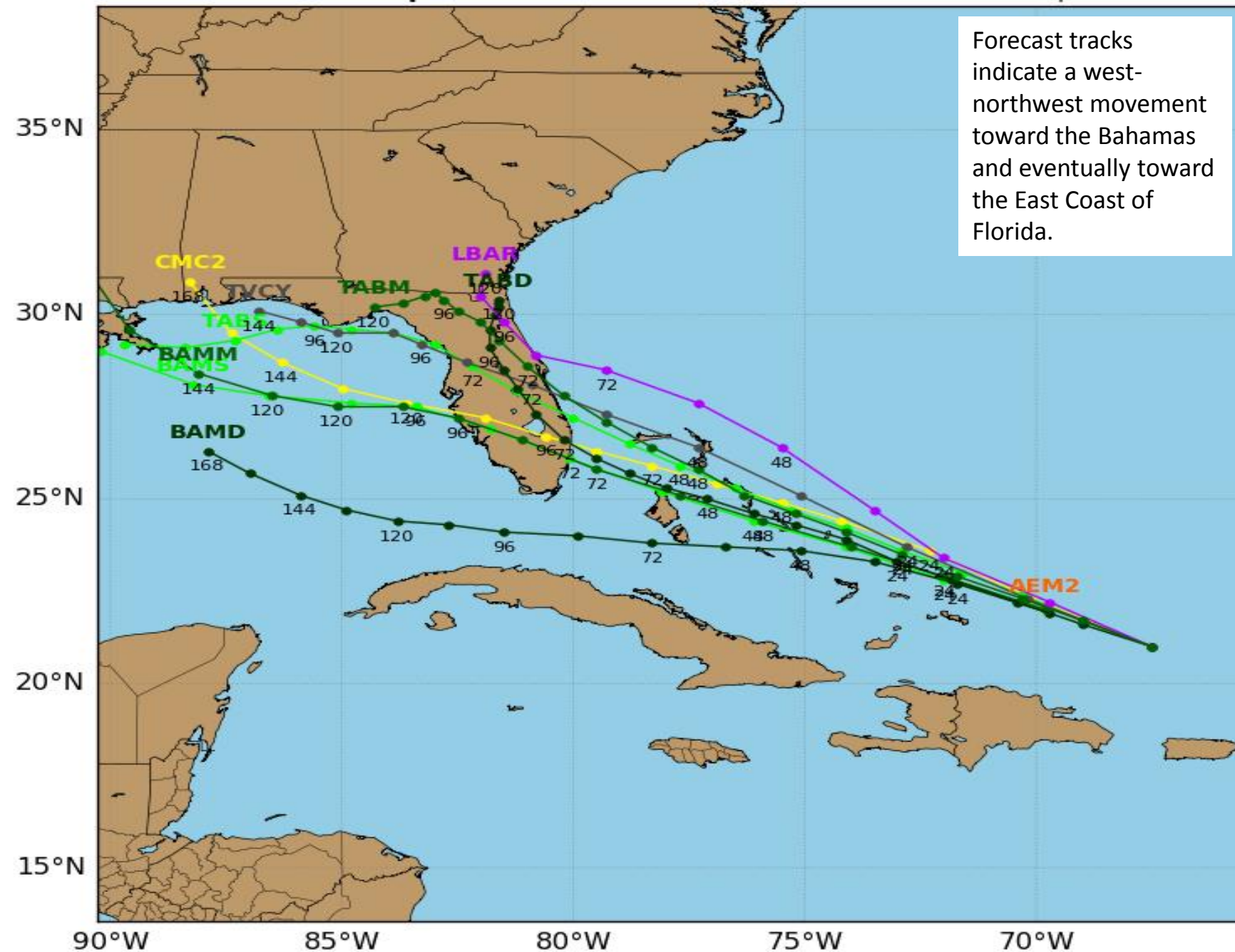


Invest 93L Model Track Guidance

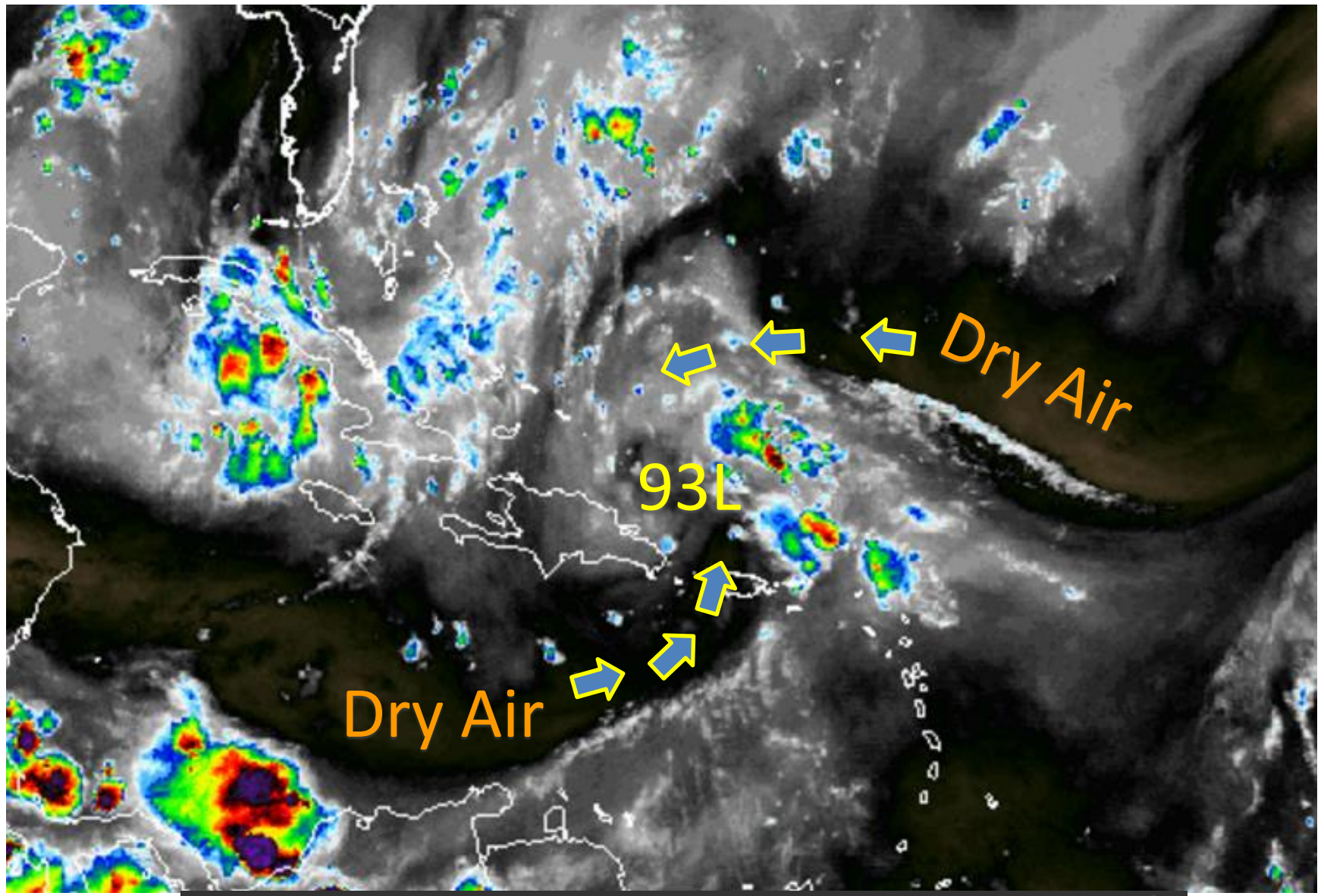
Initialized at 12z Sep 10 2016

Levi Cowan - tropicaltidbits.com

Forecast tracks indicate a west-northwest movement toward the Bahamas and eventually toward the East Coast of Florida.



Water Vapor Imagery of 93L

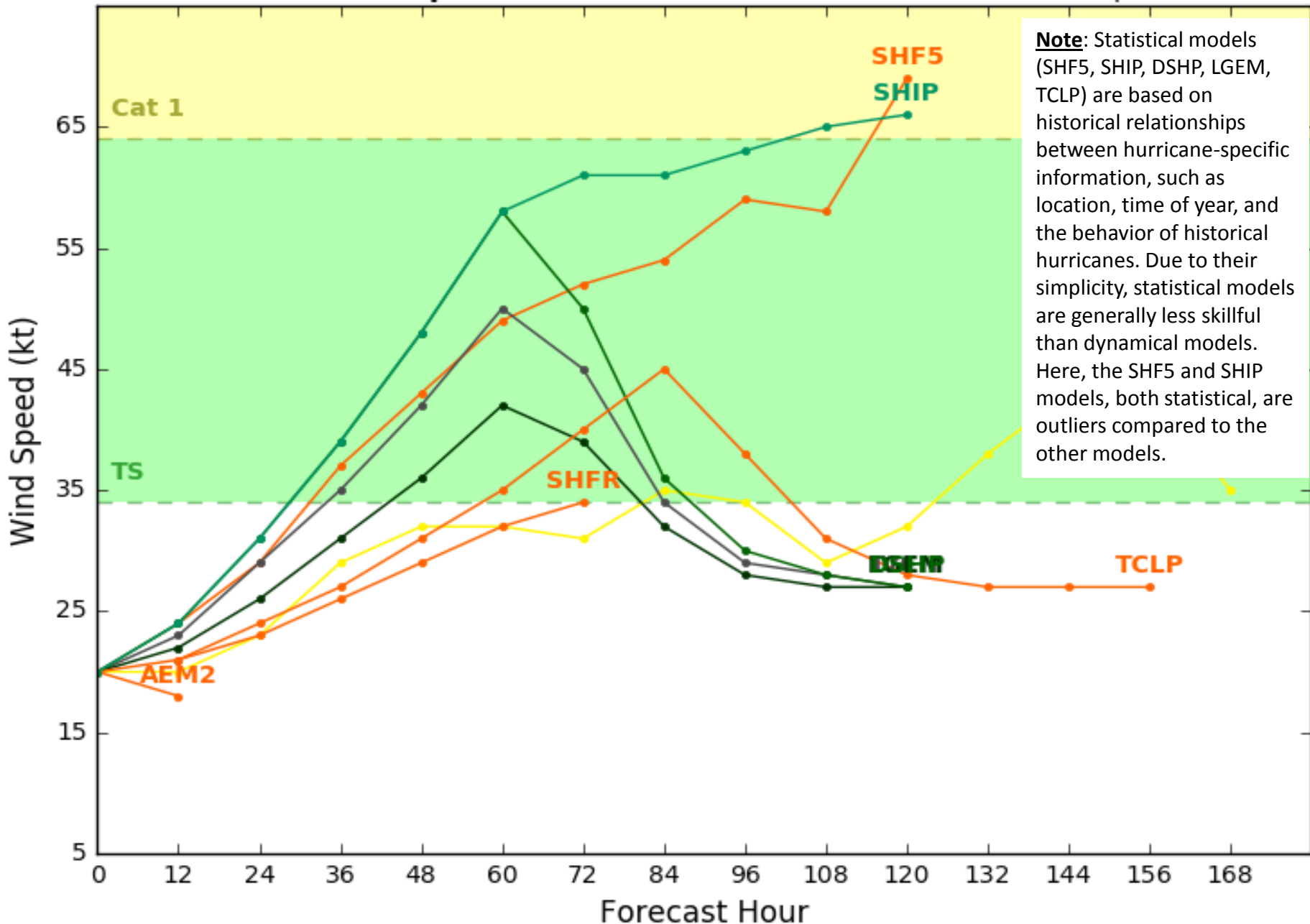


Dry Saturated

Invest 93L Model Intensity Guidance

Initialized at 12z Sep 10 2016

Levi Cowan - tropicaltidbits.com



Invest 94L

8 AM Sat Sep 10 2016

Position 13.2 45.0 W

Maximum Winds 30 mph

Movement WNW at 11 mph

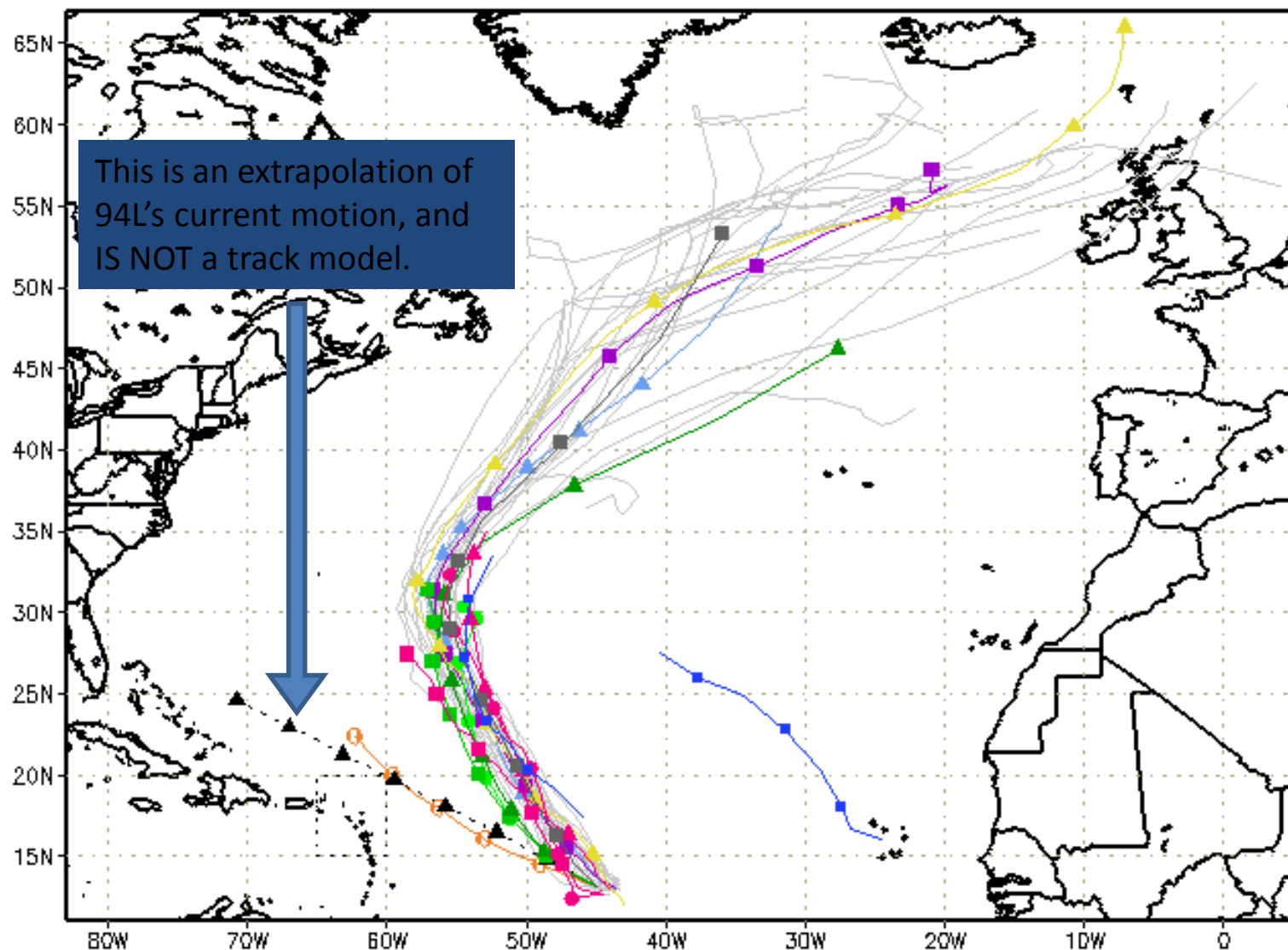
Blue Marble basemap imagery courtesy NASA

Satellite 1:00 PM UTC

1:00 PM GMT



XTRP 10/1200Z TVCN 10/1200Z TV15 Not Avail NHC Not Avail
 BAMD 10/1200Z BAMD 10/1200Z BAMS 10/1200Z
 GFDL 10/0600Z GFDN 10/0600Z HWRF 10/0600Z AHWI Not Avail
 AVNO 10/0600Z AEMN 10/0600Z APxx 10/0600Z FIM9 Not Avail
 CMC 10/0000Z UKM 10/0000Z NGX Not Avail GLP5 10/1200Z



storm_94

sfwmd.gov

weather@sfwmd.gov
10-Sep 09:06EDT

NHC Advisories and County Emergency Management Statements supersede this product.
 This graphic should complement, not replace, NHC discussions.
 If anything on this graphic causes confusion, ignore the entire product.
 For full info, see <http://my.sfwmd.gov/sfwmd/common/images/weather/plots.html>



Summary:

- A weak area of low pressure in the southeastern Gulf of Mexico, designated Invest 92L, is producing limited shower and storm activity this morning.
- Despite warm sea surface temperatures in the Gulf, conditions are not expected to be conducive for development due to unfavorable upper level winds.
- As a result, it has a 10% (low) chance for development over the next 48 hours and a 10% (low) chance over the next five days.
- Forecast track models indicate a continued west to west-northwest motion through the central Gulf toward southern Texas or northern Mexico.
- Intensity models keep the system weak over the next 48 hours with some models strengthening it to a tropical storm beyond 48 hours and others keeping it below tropical storm strength. However, significant development of 92L is not expected as indicated by its development chances above.
- An area of disturbed weather north of Puerto Rico, designated Invest 93L, remains disorganized and is not expected to develop due to dry air in its vicinity. It has a 10% (low) chance of development over the next 48 hours and a 10% (low) chance over the next five days.
- Regardless, forecast track models indicate a continued west-northwest motion toward the Bahamas and the East Coast of Florida over the next few days.
- A broad area of low pressure located about 1000 miles east of the Lesser Antilles, designated Invest 94L, has not become better organized since yesterday evening, but conditions remain favorable for development and it could become a tropical depression by early next week.
- It has a 70% (high) chance of development over the next 48 hours and a 90% (high) chance of development over the next five days as it moves west-northwest and then northwest through the central Atlantic.

Florida Outlook:

- 92L may bring some heavy downpours and gusty winds to the Keys today.
- 92L will continue to be monitored for potential development and any change in forecast track.
- 93L could bring some rain and possibly some gusty winds to the East Coast of Florida early next week.
- 94L is not likely to ever be a threat to Florida.

The next briefing packet will be issued Sunday morning. For more information, visit the NHC website at www.nhc.noaa.gov.



TROPICAL UPDATE

Created by:

William Watson, Assistant State Meteorologist
william.watson@em.myflorida.com

State Meteorological Support Unit
Florida Division of Emergency Management

Users wishing to subscribe (approval pending) to this distribution list, register at
https://public.govdelivery.com/accounts/FLDEM/subscriber/new?topic_id=SERT_Met_Tropics.
Other reports available for subscription are available at
<https://public.govdelivery.com/accounts/FLDEM/subscriber/new?preferences=true>