



TROPICAL UPDATE

6 PM EDT

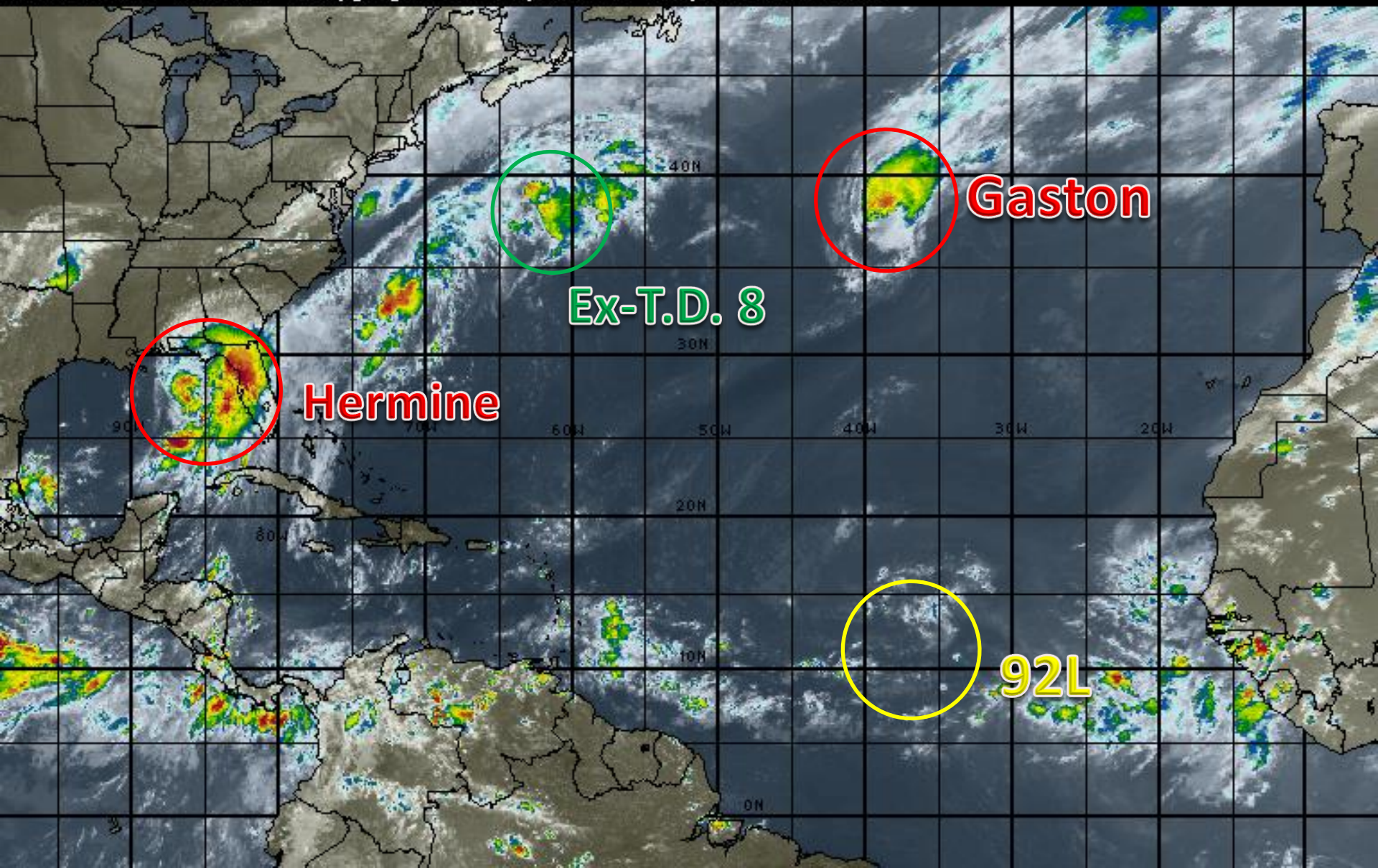
Thursday, September 1, 2016

**Hurricane Gaston, Tropical Storm
Hermine, & Invest 92L (20%)**

This update is intended for government and emergency response officials, and is provided for informational and situational awareness purposes only. Forecast conditions are subject to change based on a variety of environmental factors. For additional information, or for any life safety concerns with an active weather event please contact your County Emergency Management or Public Safety Office, local National Weather Service forecast office or visit the National Hurricane Center website at www.nhc.noaa.gov.

Atlantic Basin Satellite Image

18:00 01-SEP-2016 GMT ©Copyright WSI Corporation <http://www.wsi.com>



Tropical Storm Hermine

12 PM CDT Thu Sep 01 2016

Position 27.8 N 85.6 W

Maximum Winds 70 mph

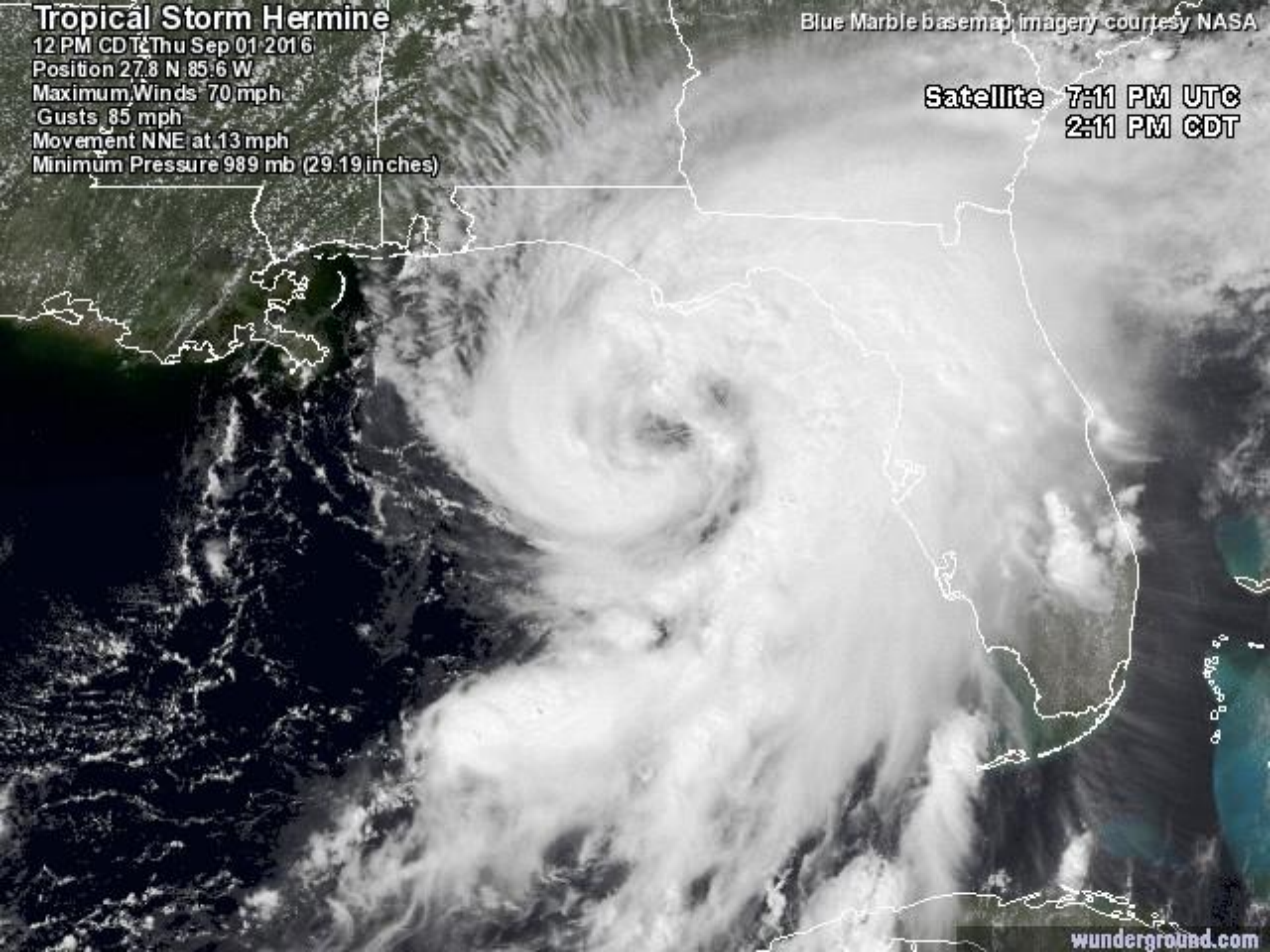
Gusts 85 mph

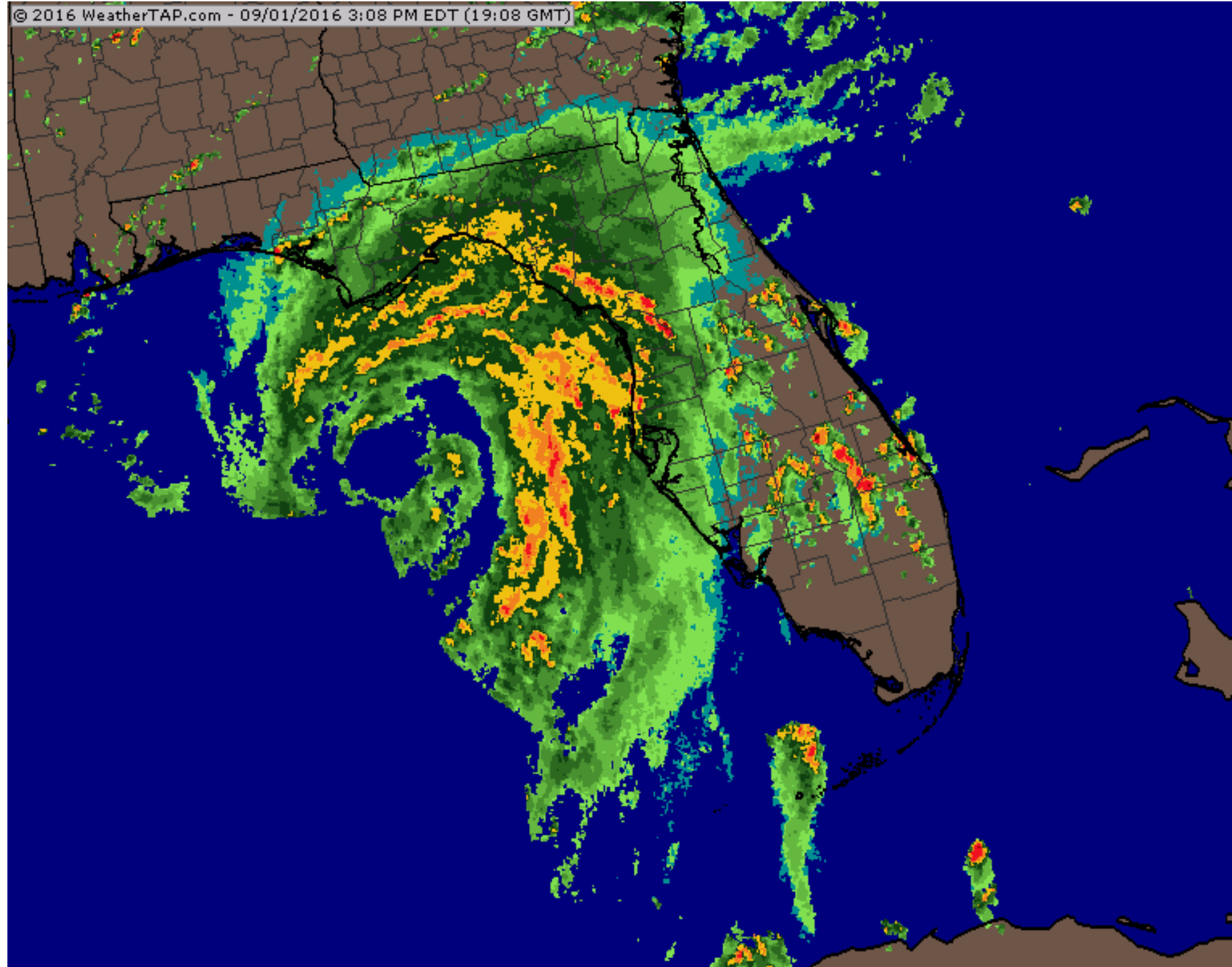
Movement NNE at 13 mph

Minimum Pressure 989 mb (29.19 inches)

Blue Marble basemap imagery courtesy NASA

Satellite 7:11 PM UTC
2:11 PM CDT

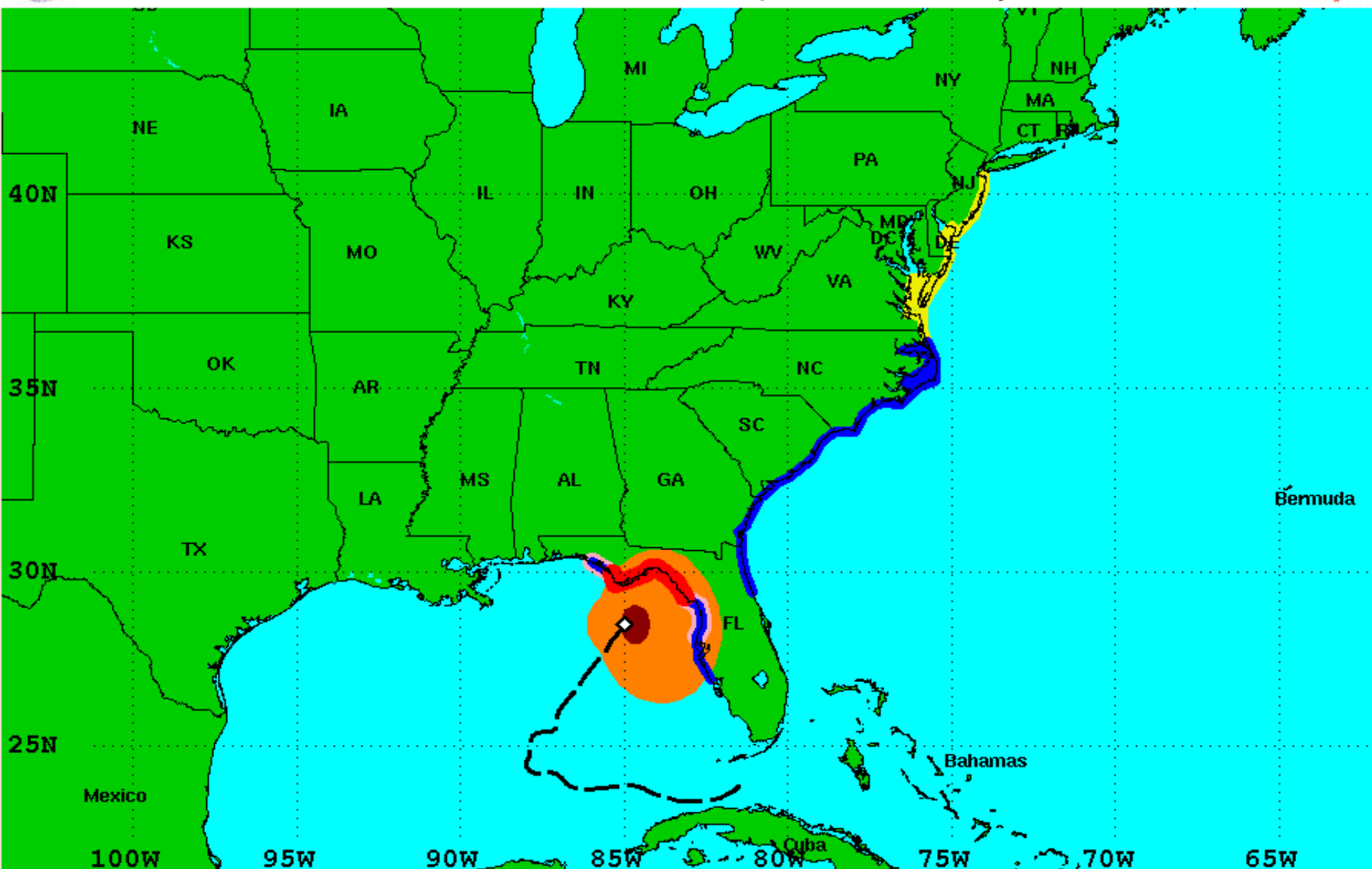


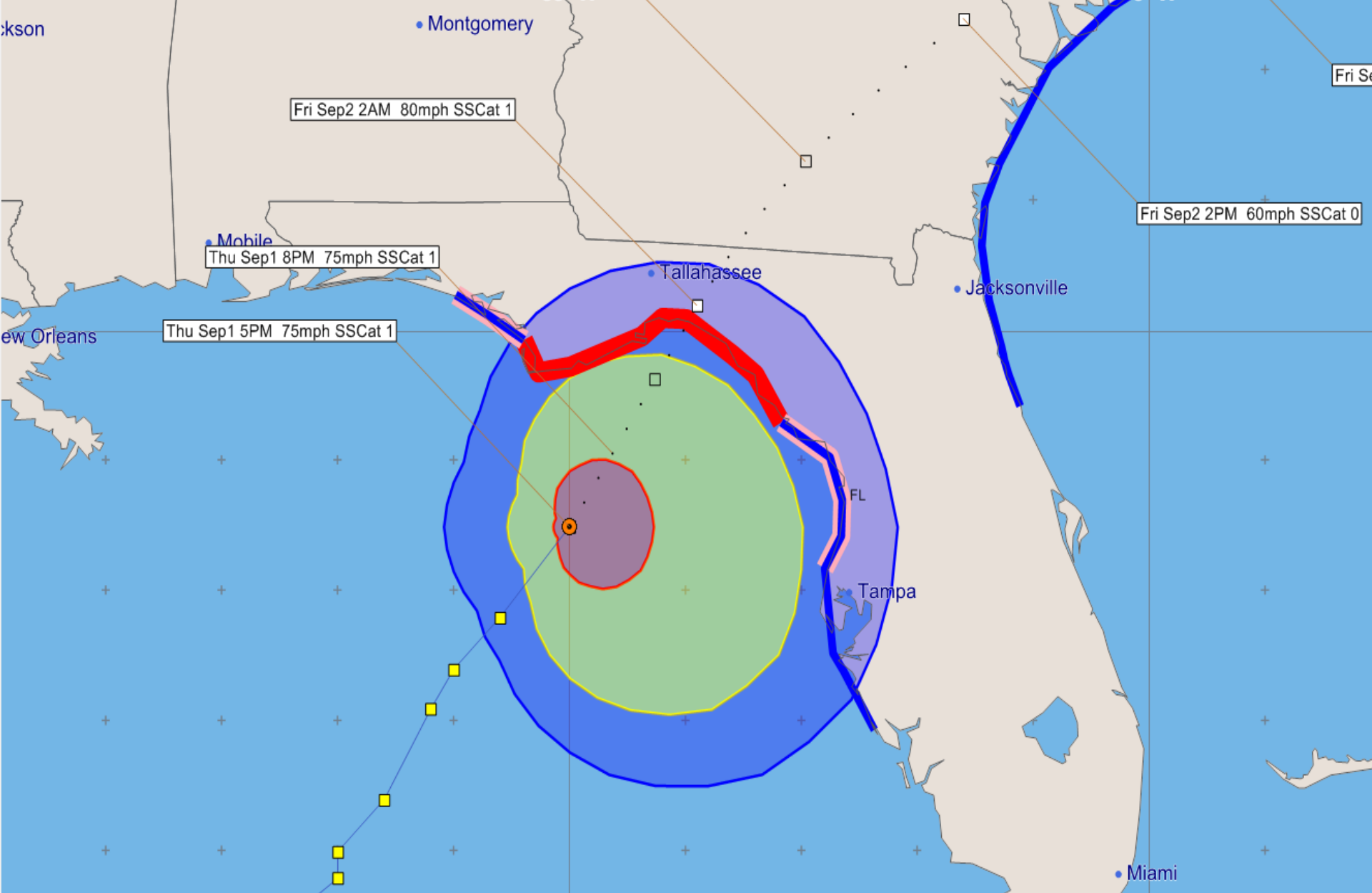




Surface Wind Field of Hurricane Hermine

Sustained Winds as of 400 PM CDT Thu Sep 1, 2016 Advisory Number 18





Hurricane Hermine - Thursday, September 1, 2016 5 PM EDT Advisory #18
Center Location: 28.5 N 85 W Maximum Sustained Winds: 75 mph (Cat 1) Movement: 14 mph NNE

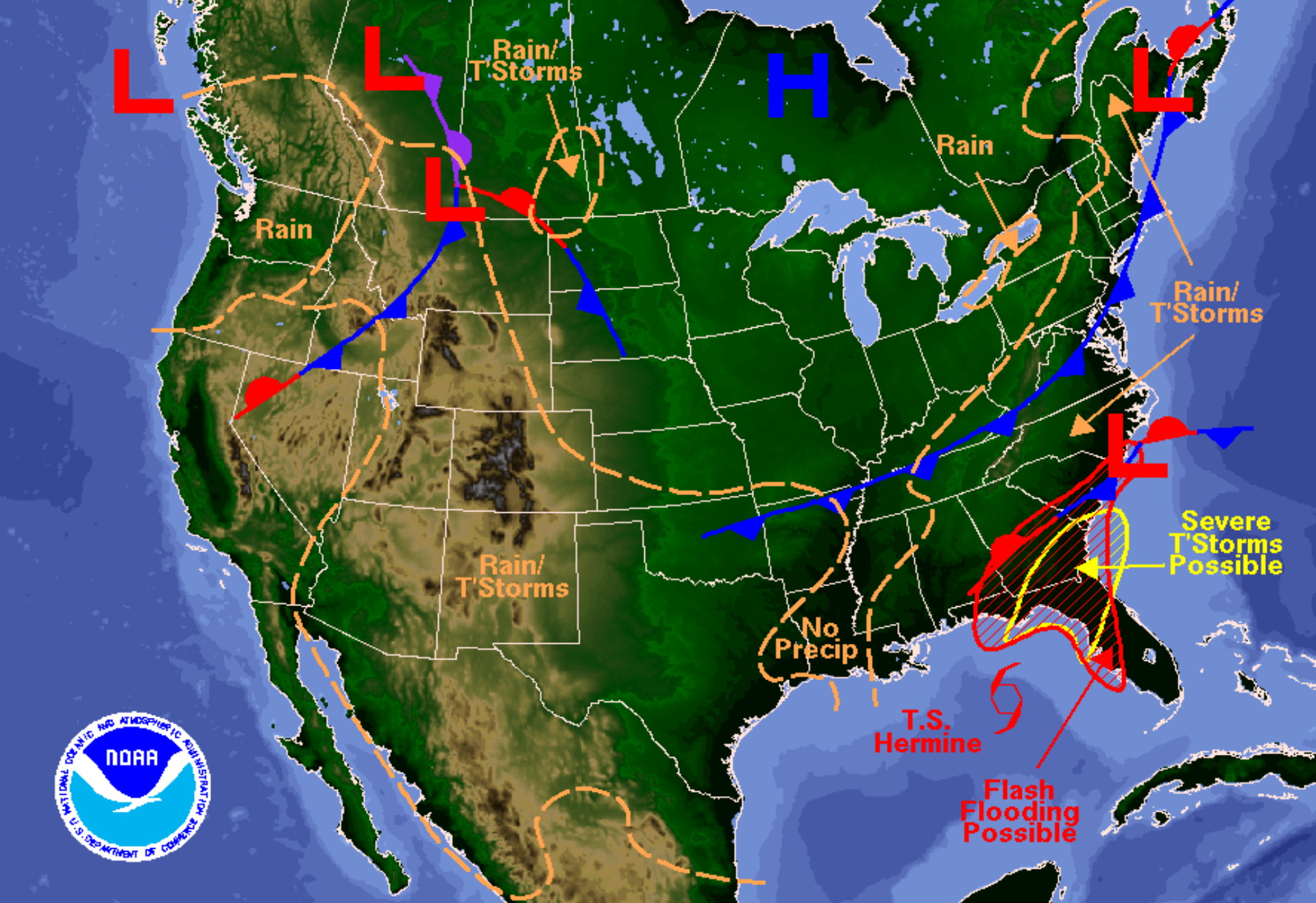
Forecast positions: □ forecast positions ○ at current location

Surface Wind Field: ○ at current location

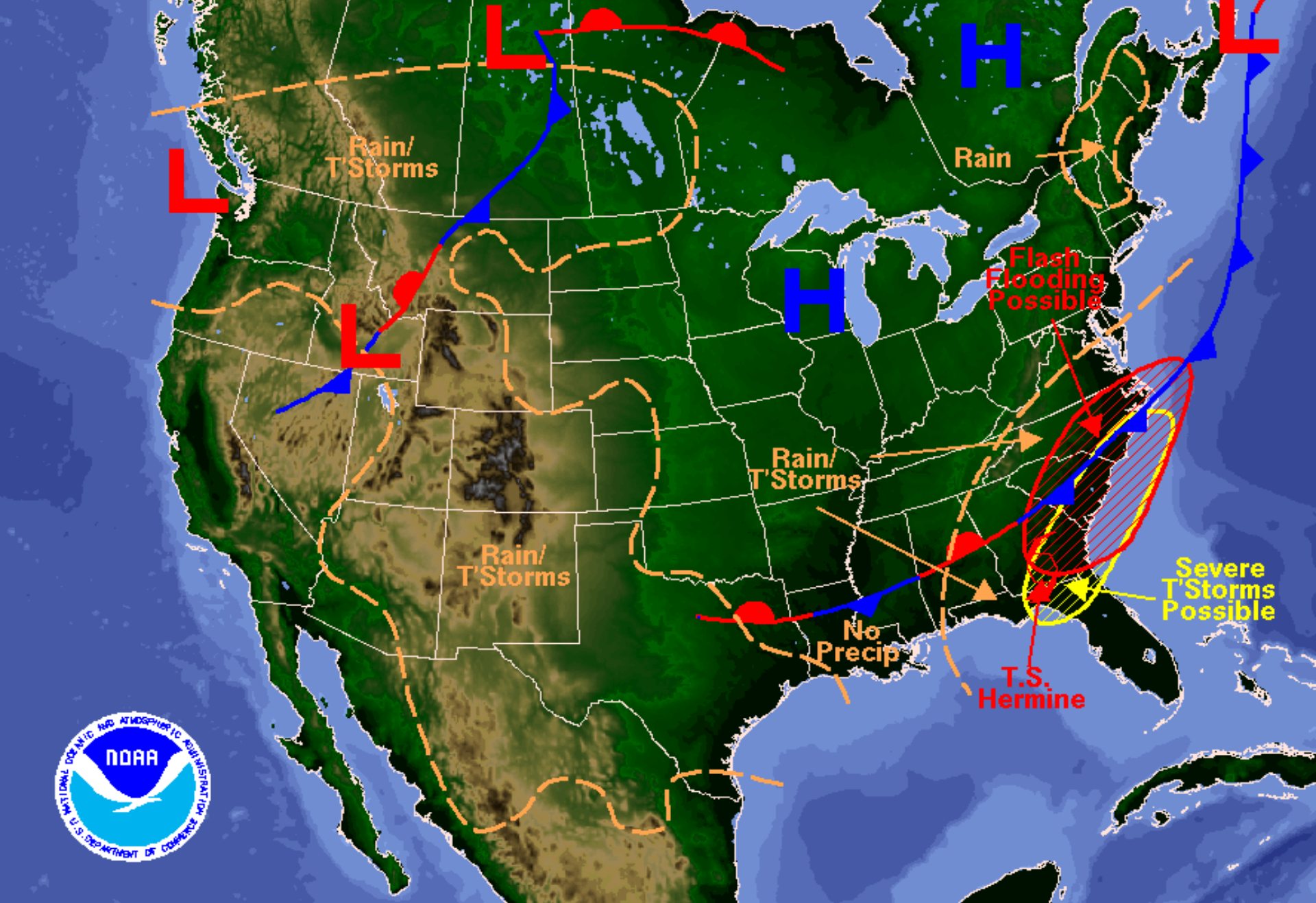
Watches: — hurricane — tropical storm

Warnings: — hurricane — tropical storm

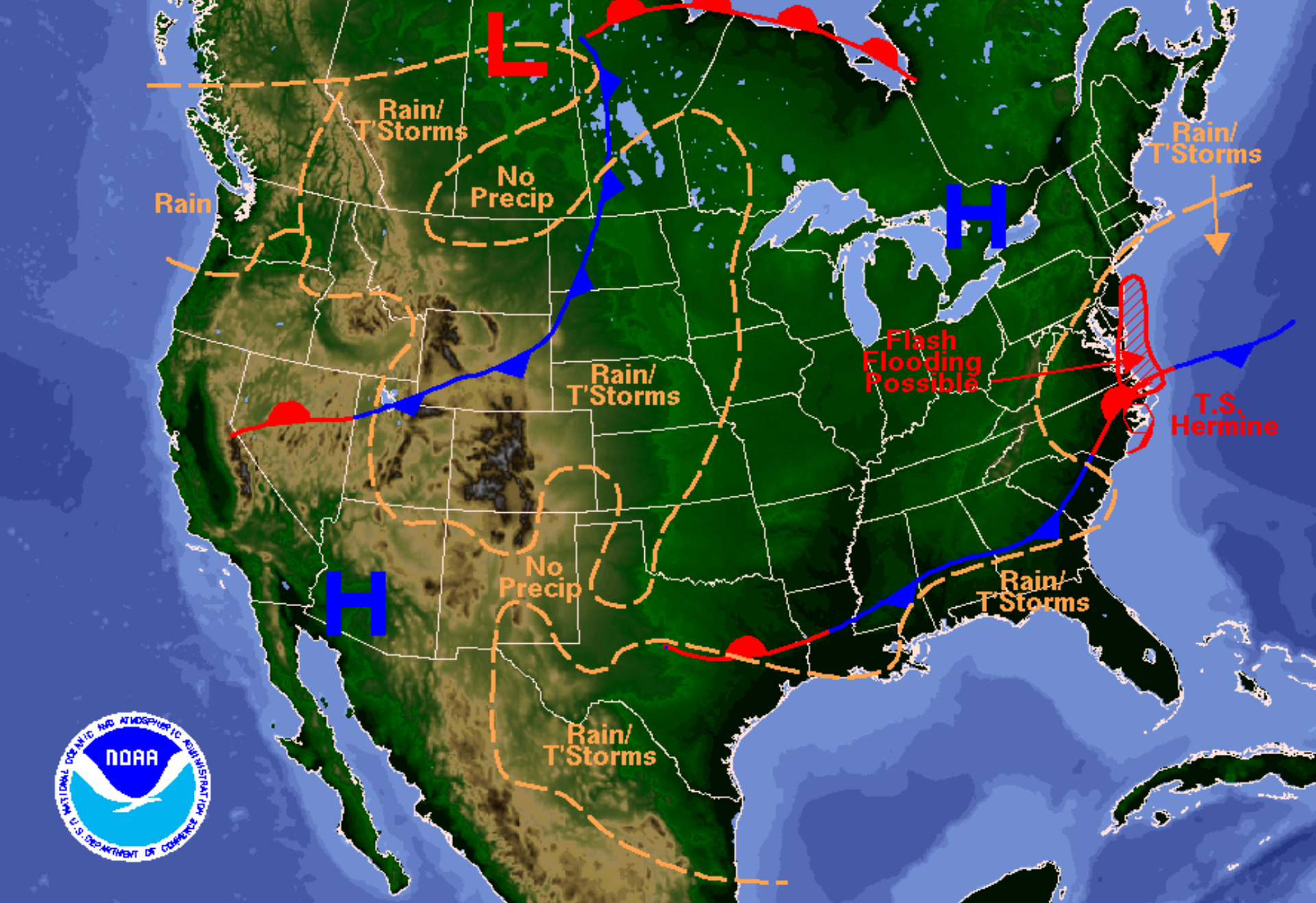
Sustained Wind Speeds: — tropical storm ≥ 34 kt/39mph — strong tropical storm ≥ 50 kt/58mph — hurricane ≥ 64 kt/74mph



Weather Forecast for Thu, Sep 01, 2016, issued 4:32 AM EDT
DOC/NOAA/NWS/NCEP/Weather Prediction Center
Prepared by McCreynolds based on WPC, SPC and NHC forecasts

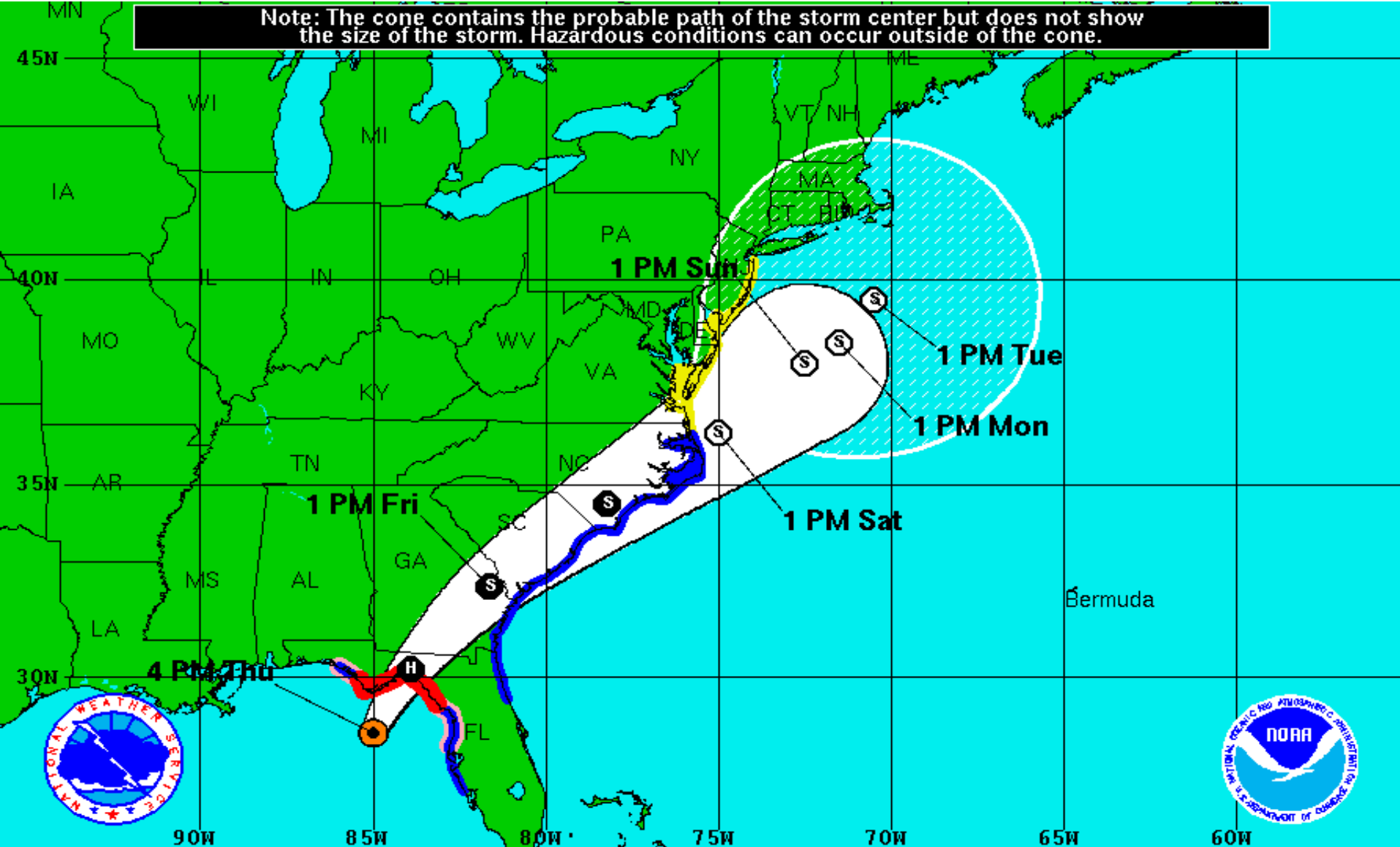


Weather Forecast for Fri, Sep 02, 2016, issued 7:20 AM EDT Thu, Sep 01, 2016
DOC/NOAA/NWS/NCEP/Weather Prediction Center
Prepared by McReynolds based on WPC, SPC and NHC forecasts






Weather Forecast for Sat, Sep 03, 2016, issued 4:42 AM EDT Thu, Sep 01, 2016
DOC/NOAA/NWS/NCEP/Weather Prediction Center
Prepared by McCreynolds based on WPC, SPC and NHC forecasts

Note: The cone contains the probable path of the storm center but does not show the size of the storm. Hazardous conditions can occur outside of the cone.



Hurricane Hermine
 Thursday September 1, 2016
 4 PM CDT Advisory 18
 NWS National Hurricane Center

Current Information: 
 Center Location 28.5 N 85.0 W
 Max Sustained Wind 75 mph
 Movement NNE at 14 mph

Forecast Positions:
 Tropical Cyclone  Post-Tropical
 Sustained Winds: D < 39 mph
 S 39-73 mph H 74-110 mph M > 110mph

Potential Track Area:
 Day 1-3  Day 4-5

Watches:
 Hurricane  Trop.Storm

Warnings:
 Hurricane  Trop.Storm

HURRICANE HERMINE

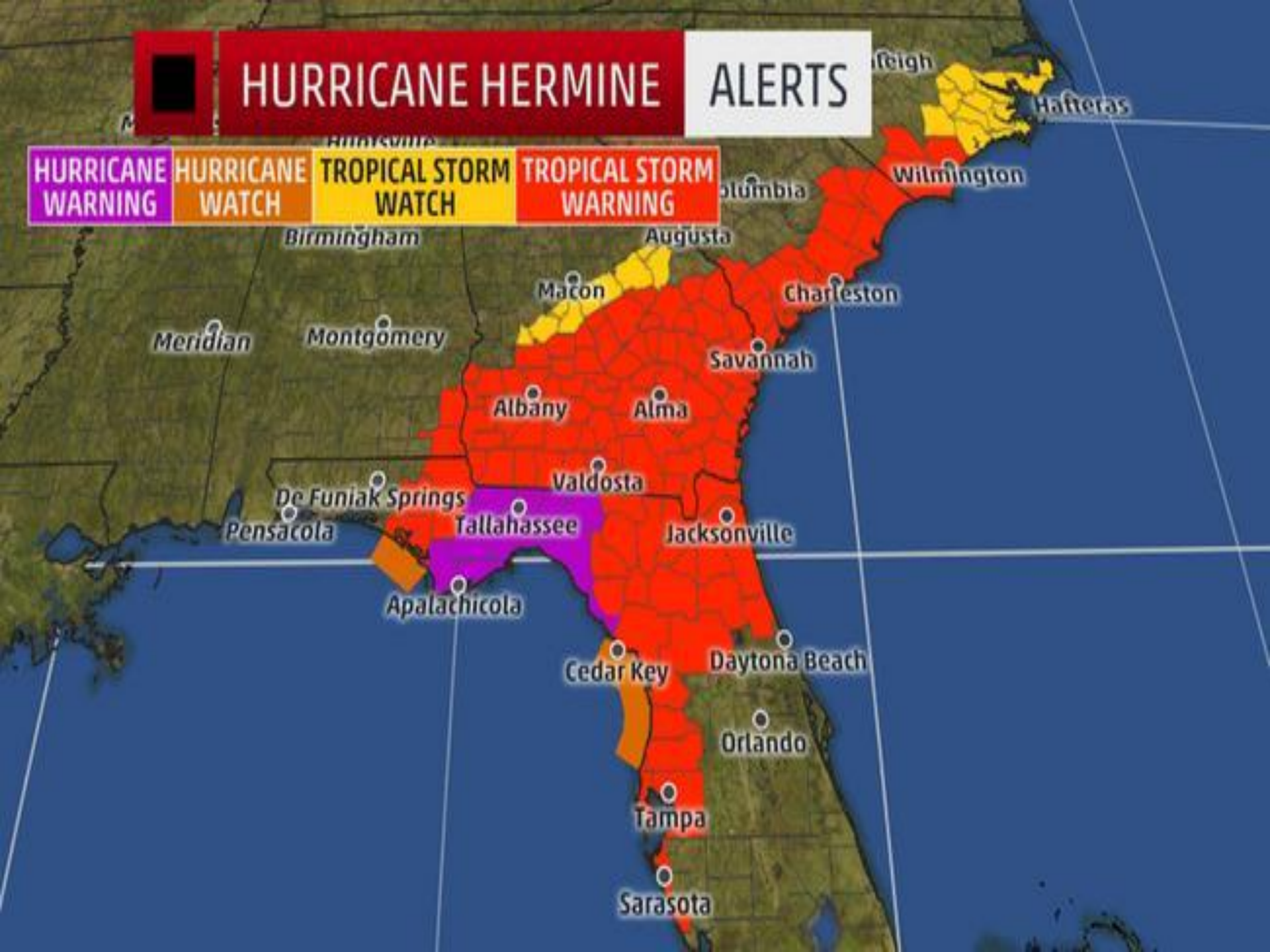
ALERTS

HURRICANE
WARNING

HURRICANE
WATCH

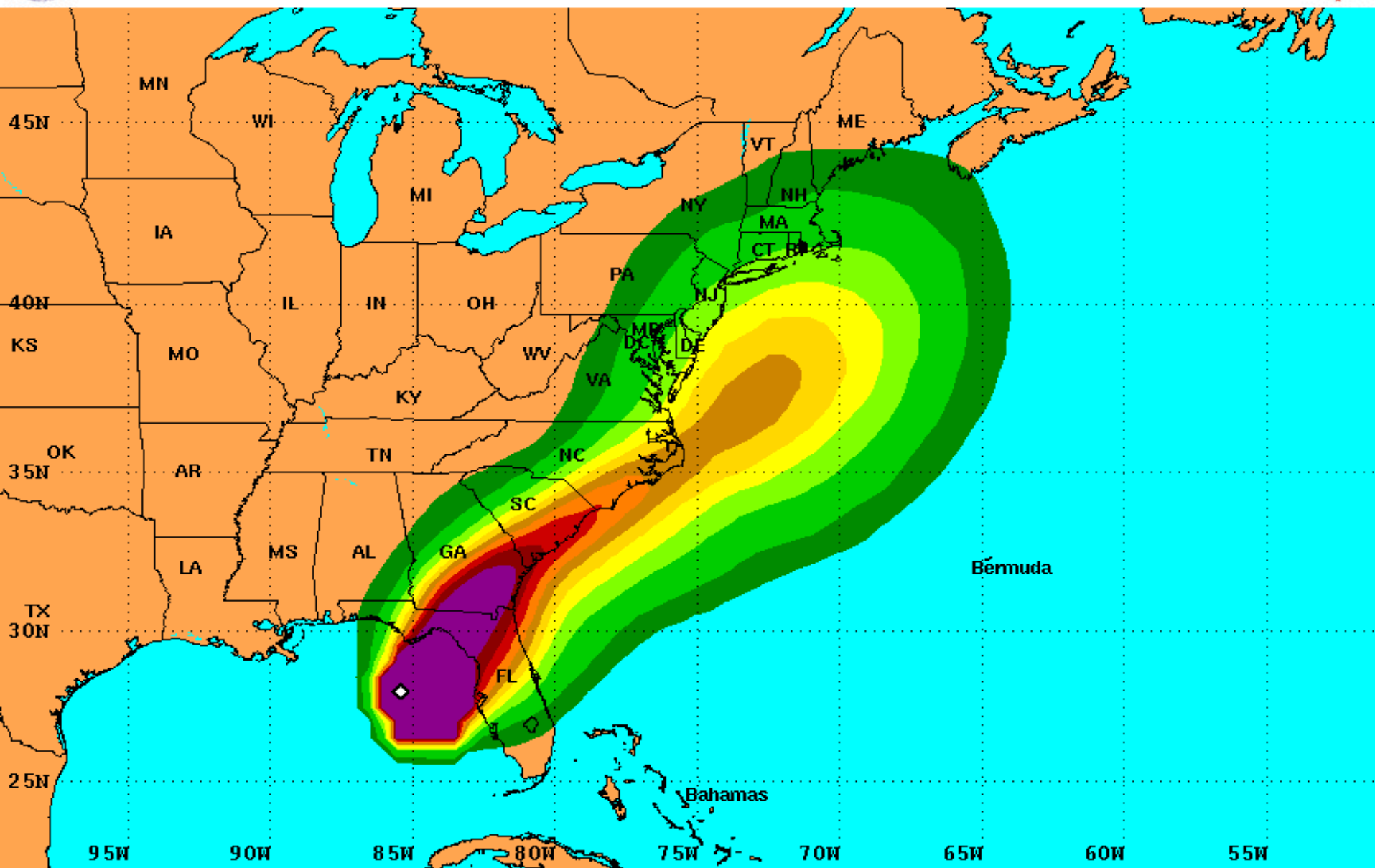
TROPICAL STORM
WATCH

TROPICAL STORM
WARNING





PRELIMINARY (SINGLE STORM) Tropical Storm Force Wind Speed Probabilities For the 120 hours (5 days) from 2 PM EDT Thu Sep 1 to 2 PM EDT Tue Sep 6



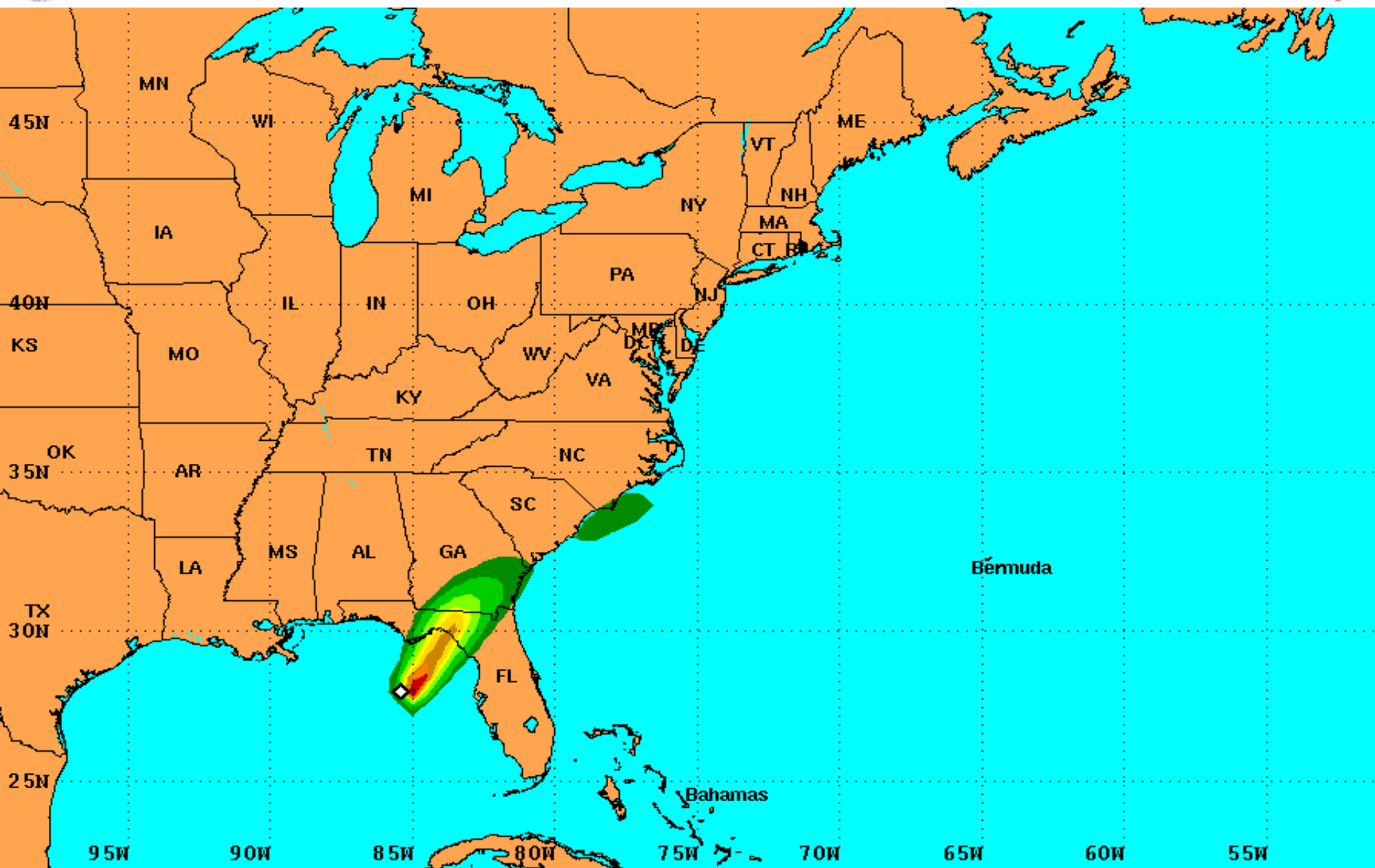
Probability of sustained tropical storm force surface winds (1-minute average of 39 mph or greater)

◊ indicates HURRICANE HERMINE center location at 2 PM EDT Thu Sep 1 2016 (Forecast/Advisory #18)



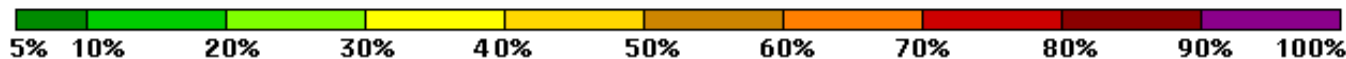


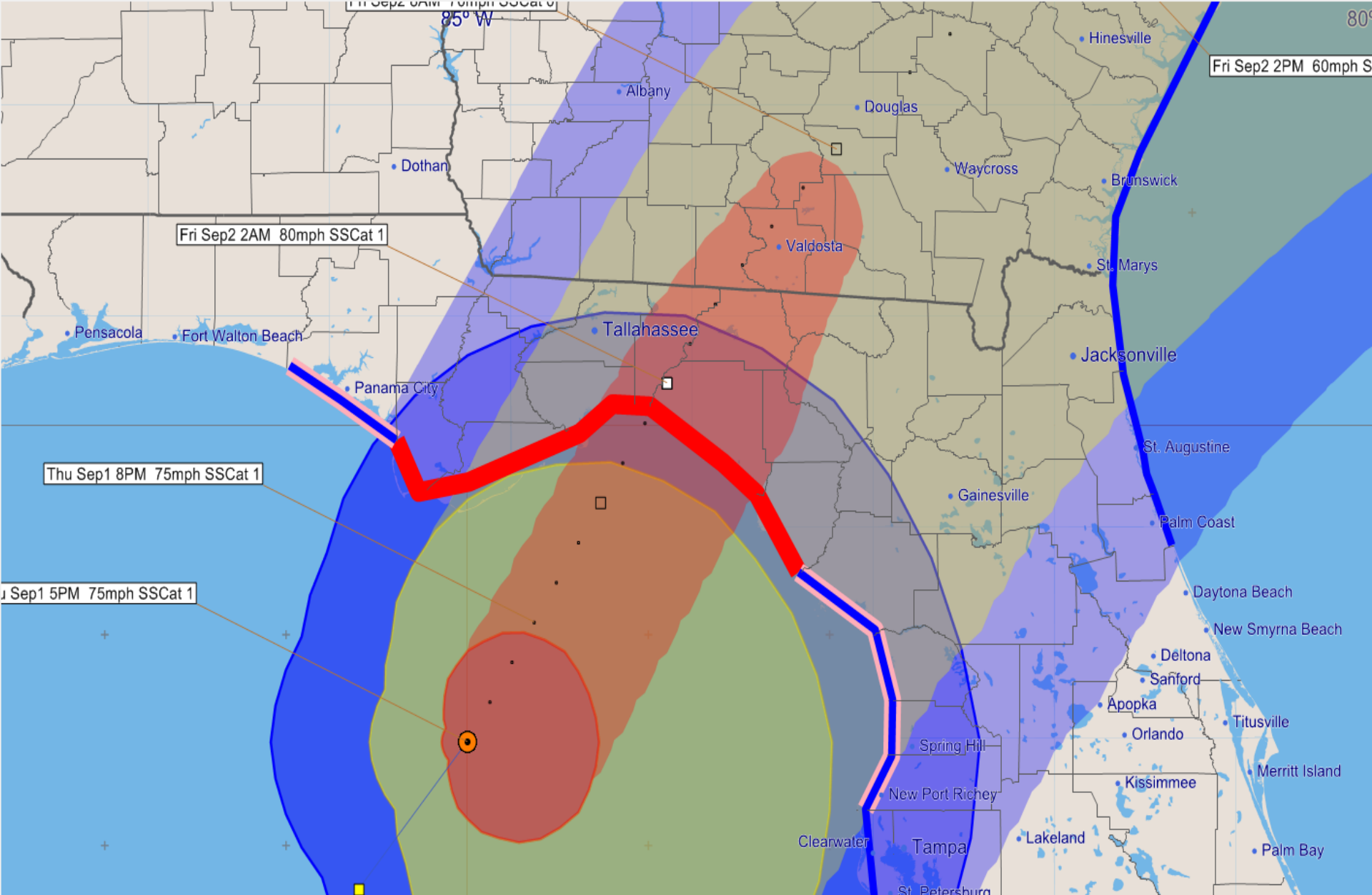
PRELIMINARY (SINGLE STORM) Hurricane Force Wind Speed Probabilities For the 120 hours (5 days) from 2 PM EDT Thu Sep 1 to 2 PM EDT Tue Sep 6



Probability of sustained hurricane force surface winds (1-minute average of 74 mph or greater)

◇ indicates HURRICANE HERMINE center location at 2 PM EDT Thu Sep 1 2016 (Forecast/Advisory #18)





Hurricane Hermine - Thursday, September 1, 2016 5 PM EDT Advisory #18
Center Location: 28.5 N 85 W Maximum Sustained Winds: 75 mph (Cat 1) Movement: 14 mph NNE

□ forecast positions Surface Wind Field: ● at current location ● along 3-day forecast track

Watches: hurricane tropical storm Warnings: hurricane tropical storm

Sustained Wind Speeds: tropical storm >= 34kt/39mph strong tropical storm >= 50kt/58mph hurricane >= 64kt/74mph

Wind Timing for Local Areas Only (42 items)

Meaning Of Report

This list represents wind arrival and departure details for select locations that are currently forecast to have tropical storm or greater winds during the next 72 hours.

Cautionary Note:

This information is quite specific and is subject to large forecast errors. You should NOT use these wind forecasts until just before landfall, and then only as a

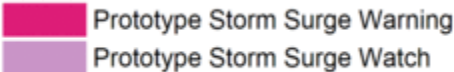
Location	34kt(39mph)	50kt(58mph)	64kt(74mph)	64ktEND(dur)	50ktEND(dur)	34ktEND(dur)	Peak Wind
FL Sarasota	Existing					09/01 20E [03]	37kt (43mph) 09/01 18E
FL Manatee	Existing					09/01 23E [06]	41kt (47mph) 09/01 18E
FL Pinellas	Existing	09/01 21E			09/01 22E [01]	09/02 03E [10]	50kt (58mph) 09/01 20E
FL Hillsborough	Existing					09/02 02E [09]	47kt (54mph) 09/01 21E
FL Bay	Existing					09/01 20E [03]	36kt (41mph) 09/01 17E
FL Franklin	Existing	09/01 18E	09/01 23E	09/02 00E [01]	09/02 03E [09]	09/02 05E [12]	64kt (74mph) 09/01 23E
FL Dixie	Existing	09/01 18E			09/02 08E [14]	09/02 10E [17]	63kt (72mph) 09/02 00E
FL Sumter	Existing	09/02 01E			09/02 02E [01]	09/02 07E [14]	50kt (58mph) 09/02 00E
FL Pasco	Existing	09/01 21E			09/01 23E [02]	09/02 04E [11]	50kt (58mph) 09/01 20E
FL Hernando	Existing	09/01 21E			09/02 02E [05]	09/02 05E [12]	52kt (60mph) 09/01 23E
FL Citrus	Existing	09/01 20E			09/02 04E [08]	09/02 07E [14]	54kt (62mph) 09/01 23E
FL Marion	Existing	09/01 22E			09/02 06E [08]	09/02 10E [17]	54kt (62mph) 09/02 02E
FL Gilchrist	Existing	09/01 20E			09/02 08E [12]	09/02 10E [17]	60kt (69mph) 09/02 02E
FL Calhoun	Existing					09/02 02E [09]	41kt (47mph) 09/01 19E
FL Wakulla	Existing	09/01 18E	09/01 23E	09/02 03E [04]	09/02 05E [11]	09/02 07E [14]	68kt (78mph) 09/02 01E
FL Alachua	Existing	09/01 21E			09/02 09E [12]	09/02 11E [18]	58kt (67mph) 09/02 03E
FL Levy	Existing	09/01 18E			09/02 07E [13]	09/02 09E [16]	59kt (68mph) 09/01 23E
FL Jefferson	Existing	09/01 19E	09/01 23E	09/02 06E [07]	09/02 07E [12]	09/02 09E [16]	70kt (81mph) 09/02 02E
FL Liberty	Existing	09/01 19E			09/02 02E [07]	09/02 05E [12]	57kt (66mph) 09/01 21E
FL Taylor	Existing	09/01 19E	09/01 23E	09/02 05E [06]	09/02 08E [13]	09/02 10E [17]	69kt (79mph) 09/02 01E
FL Leon	Existing	09/01 20E	09/02 00E	09/02 03E [03]	09/02 06E [10]	09/02 08E [15]	65kt (75mph) 09/02 01E
FL Madison	Existing	09/01 20E	09/02 00E	09/02 07E [07]	09/02 09E [13]	09/02 10E [17]	70kt (81mph) 09/02 03E
FL Gulf	Existing	09/01 19E			09/01 21E [02]	09/02 03E [10]	50kt (58mph) 09/01 20E
FL Gadsden	Existing	09/01 21E			09/02 03E [06]	09/02 07E [14]	55kt (63mph) 09/02 00E
FL Lafayette	Existing	09/01 19E	09/02 02E	09/02 05E [03]	09/02 08E [13]	09/02 10E [17]	65kt (75mph) 09/02 02E
FL Suwannee	Existing	09/01 21E	09/02 02E	09/02 06E [04]	09/02 09E [12]	09/02 11E [18]	64kt (74mph) 09/02 02E
FL Columbia	09/01 18E	09/01 21E			09/02 11E [14]	09/02 13E [19]	62kt (71mph) 09/02 06E
FL Hamilton	09/01 18E	09/01 22E	09/02 03E	09/02 07E [04]	09/02 10E [12]	09/02 12E [18]	64kt (74mph) 09/02 03E
FL Lake	09/01 19E					09/02 08E [13]	45kt (52mph) 09/02 01E
FL Union	09/01 19E	09/01 22E			09/02 10E [12]	09/02 12E [17]	58kt (67mph) 09/02 03E
FL Jackson	09/01 19E					09/02 03E [08]	39kt (45mph) 09/01 22E
FL Polk	09/01 19E					09/02 02E [07]	39kt (45mph) 09/01 22E
FL Bradford	09/01 19E	09/01 23E			09/02 10E [11]	09/02 12E [17]	56kt (64mph) 09/02 03E
FL Clay	09/01 20E	09/02 01E			09/02 10E [09]	09/02 13E [17]	55kt (63mph) 09/02 05E
FL Putnam	09/01 20E	09/02 01E			09/02 08E [07]	09/02 11E [15]	53kt (61mph) 09/02 04E
FL Baker	09/01 20E	09/02 00E			09/02 12E [12]	09/02 13E [17]	60kt (69mph) 09/02 06E
FL Duval	09/01 21E	09/02 01E			09/02 12E [11]	09/02 14E [17]	55kt (63mph) 09/02 05E
FL Nassau	09/01 22E	09/02 01E			09/02 13E [12]	09/02 15E [17]	56kt (64mph) 09/02 06E
FL Volusia	09/01 22E					09/02 08E [10]	43kt (49mph) 09/02 03E
FL Flagler	09/01 23E					09/02 10E [11]	46kt (53mph) 09/02 05E
FL St Johns	09/01 23E	09/02 04E			09/02 10E [06]	09/02 13E [14]	52kt (60mph) 09/02 06E
FL Orange	09/01 23E					09/02 04E [05]	37kt (43mph) 09/02 01E



A storm surge warning indicates that there is a danger of life-threatening inundation from rising water moving inland from the shore somewhere within the specified area, generally within 36 hours.

The water could reach the following heights above ground if the peak surge occurs at the time of high tide:

- Destin to Indian Pass...1 to 3 feet
- Indian Pass to Ochlockonee River...4 to 7 feet
- Ochlockonee River to Keaton Beach...5 to 8 feet
- Keaton Beach to Chassahowitzka...4 to 7 feet
- Chassahowitzka to Longboat Key...including Tampa Bay...2 to 4 feet
- Longboat Key to Bonita Beach...1 to 3 feet
- Florida-Georgia line to Cape Fear...1 to 3 feet



Lynn Haven
Panama City

Gainesville

FLORIDA
Ocala

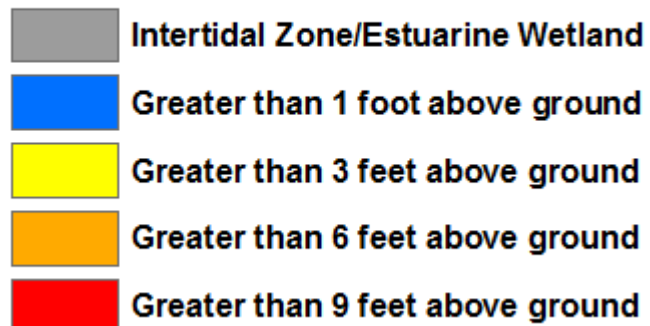
Hainesville
Spring Hill

Spring Hill

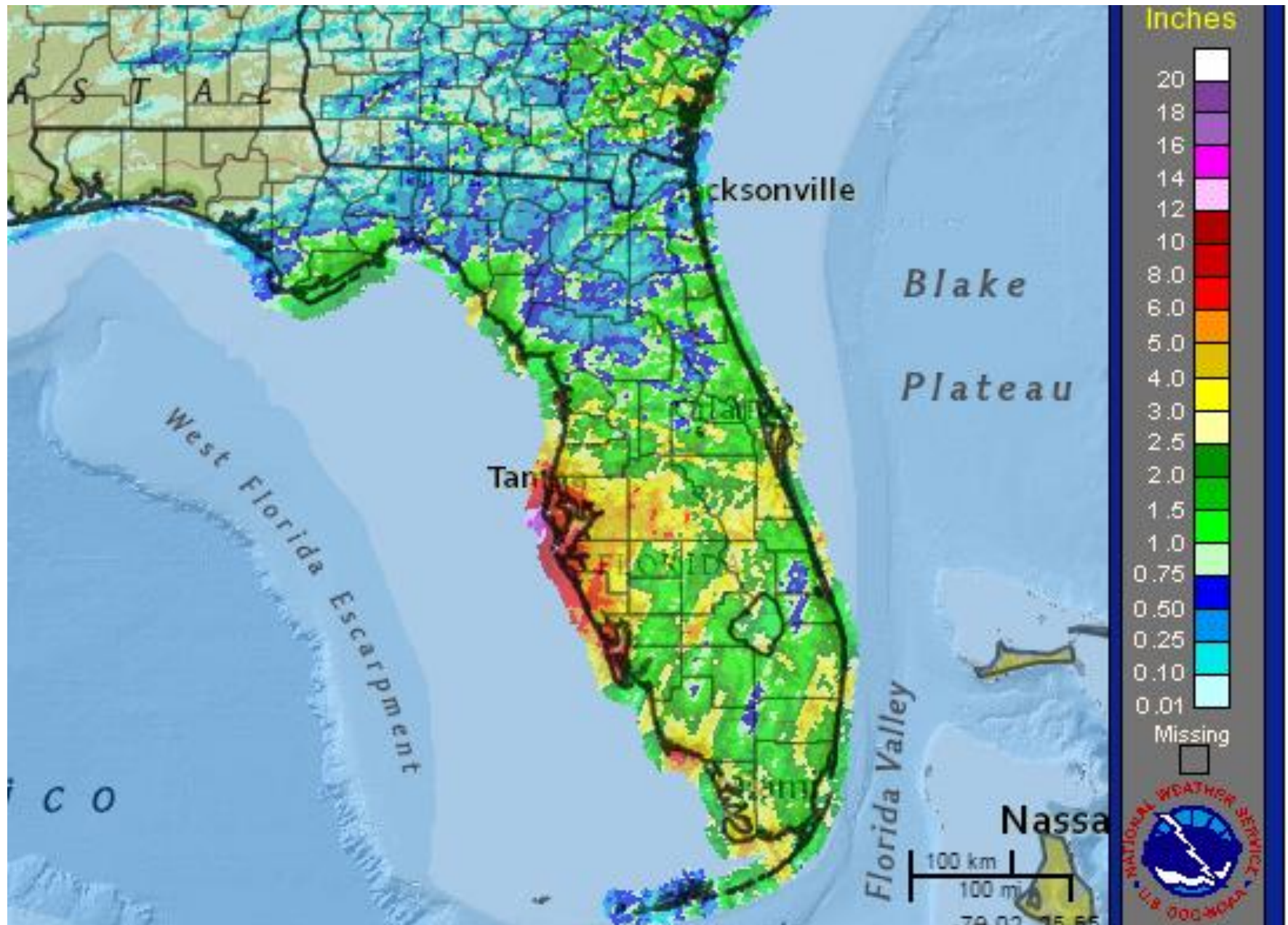
Clearwater Tampa

St Petersburg

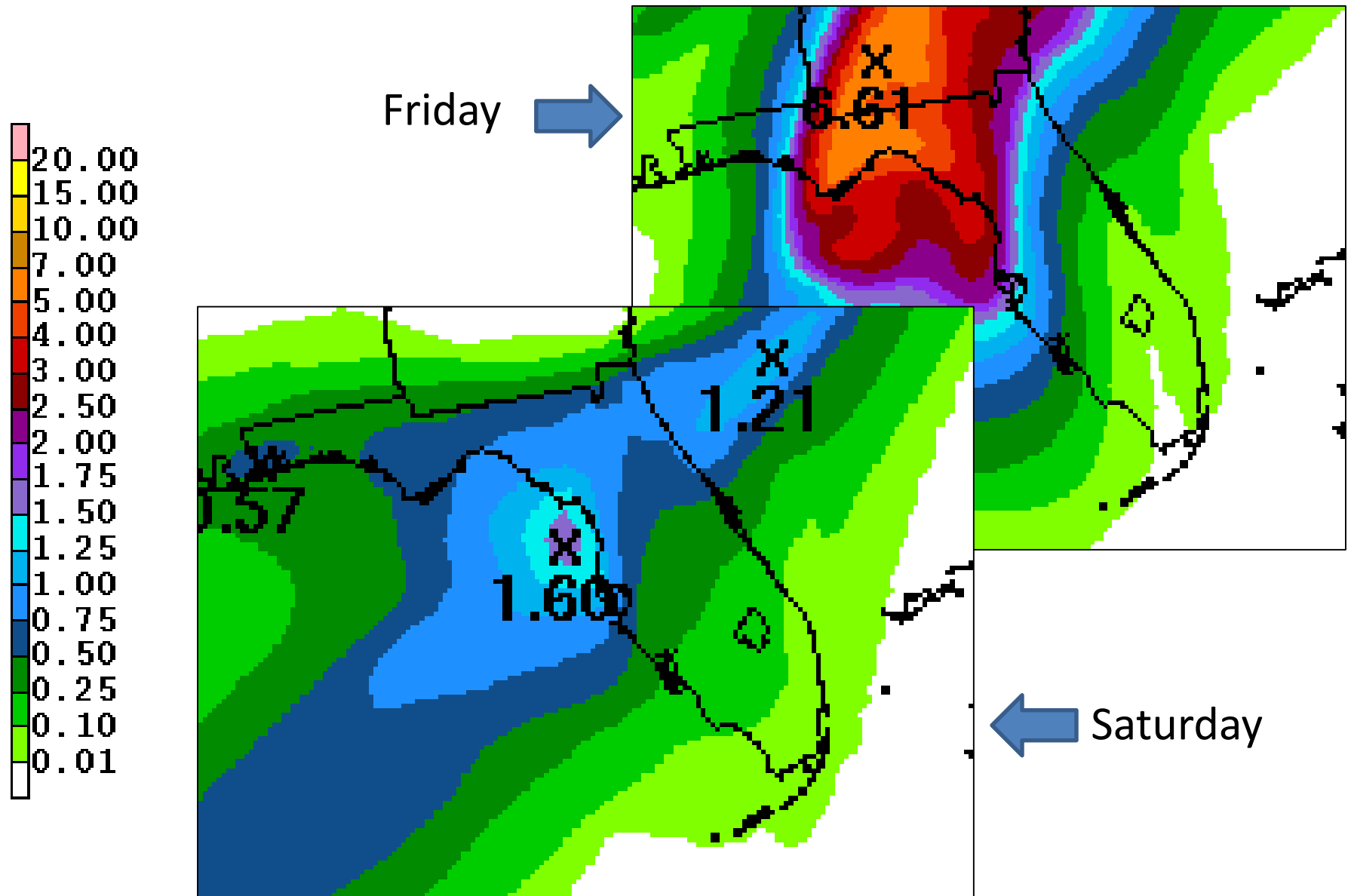
Potential Storm Surge Flooding*



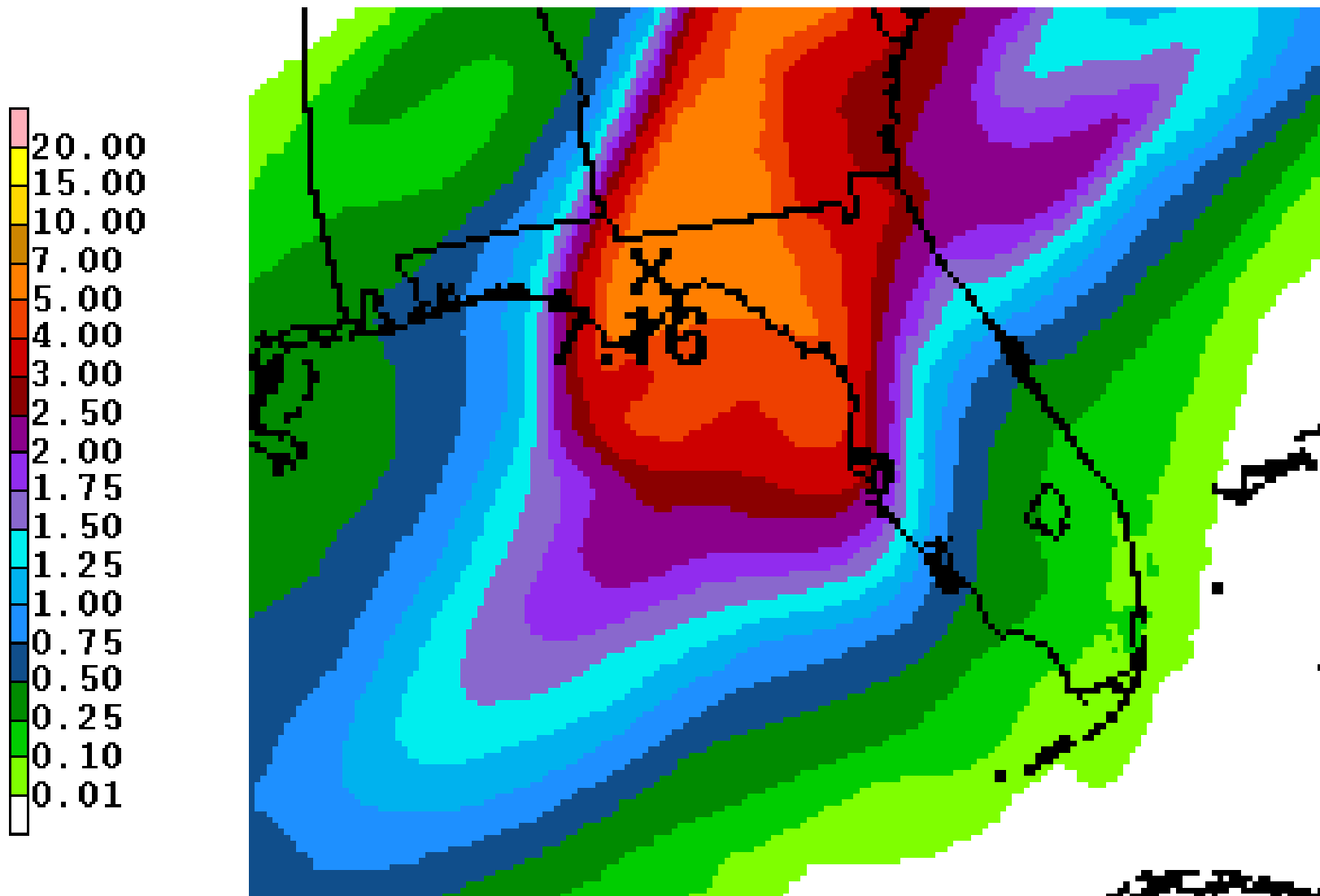
Observed Rainfall, Past 3 Days



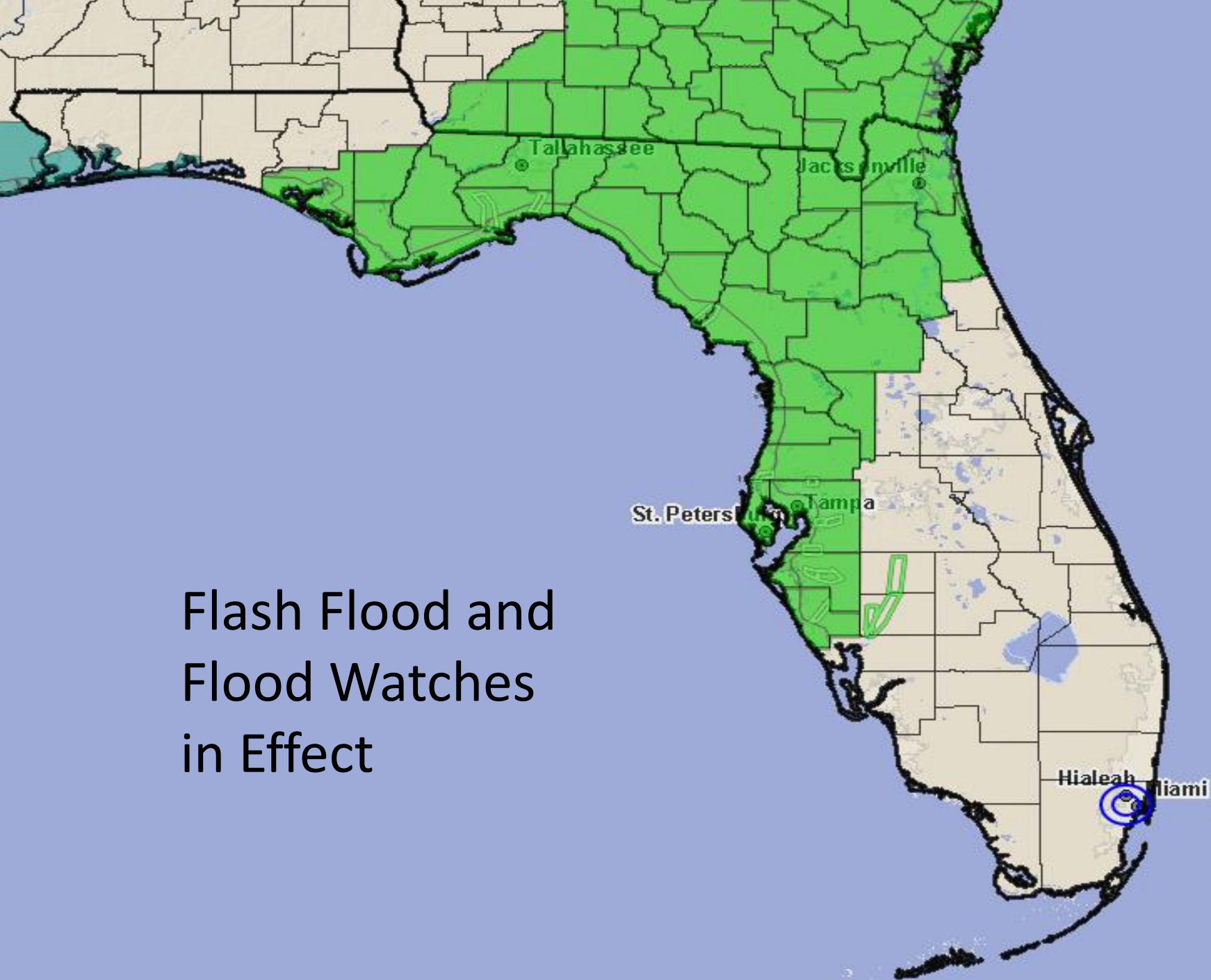
Current Rainfall Forecast

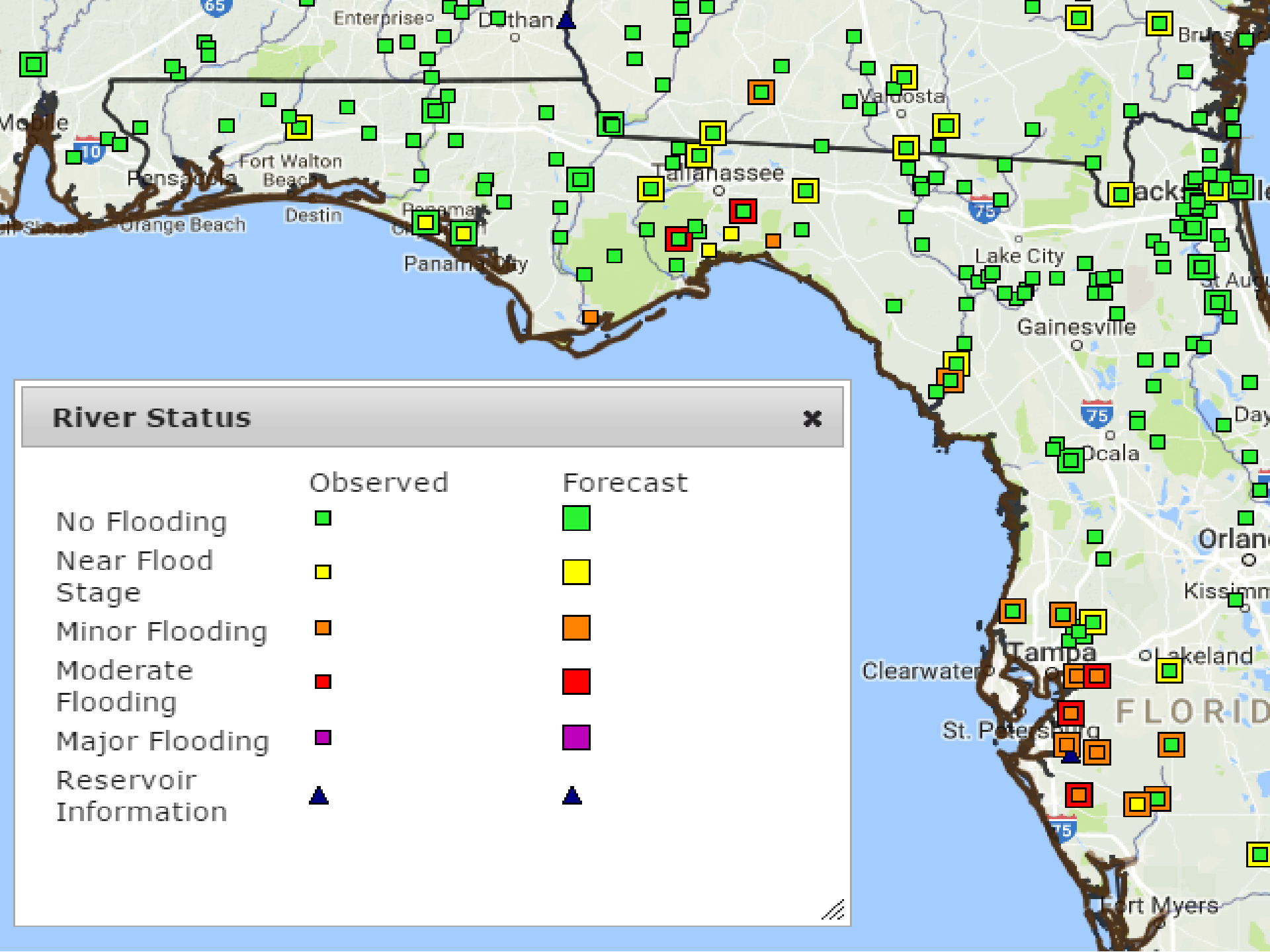


3-Day Rainfall Forecast



Flash Flood and Flood Watches in Effect





River Status



	Observed	Forecast
No Flooding		
Near Flood Stage		
Minor Flooding		
Moderate Flooding		
Major Flooding		
Reservoir Information		

Hurricane Gaston

2 PM EDT Thu Sep 01 2016

Position 38.0 N 39.2 W

Maximum Winds 85 mph

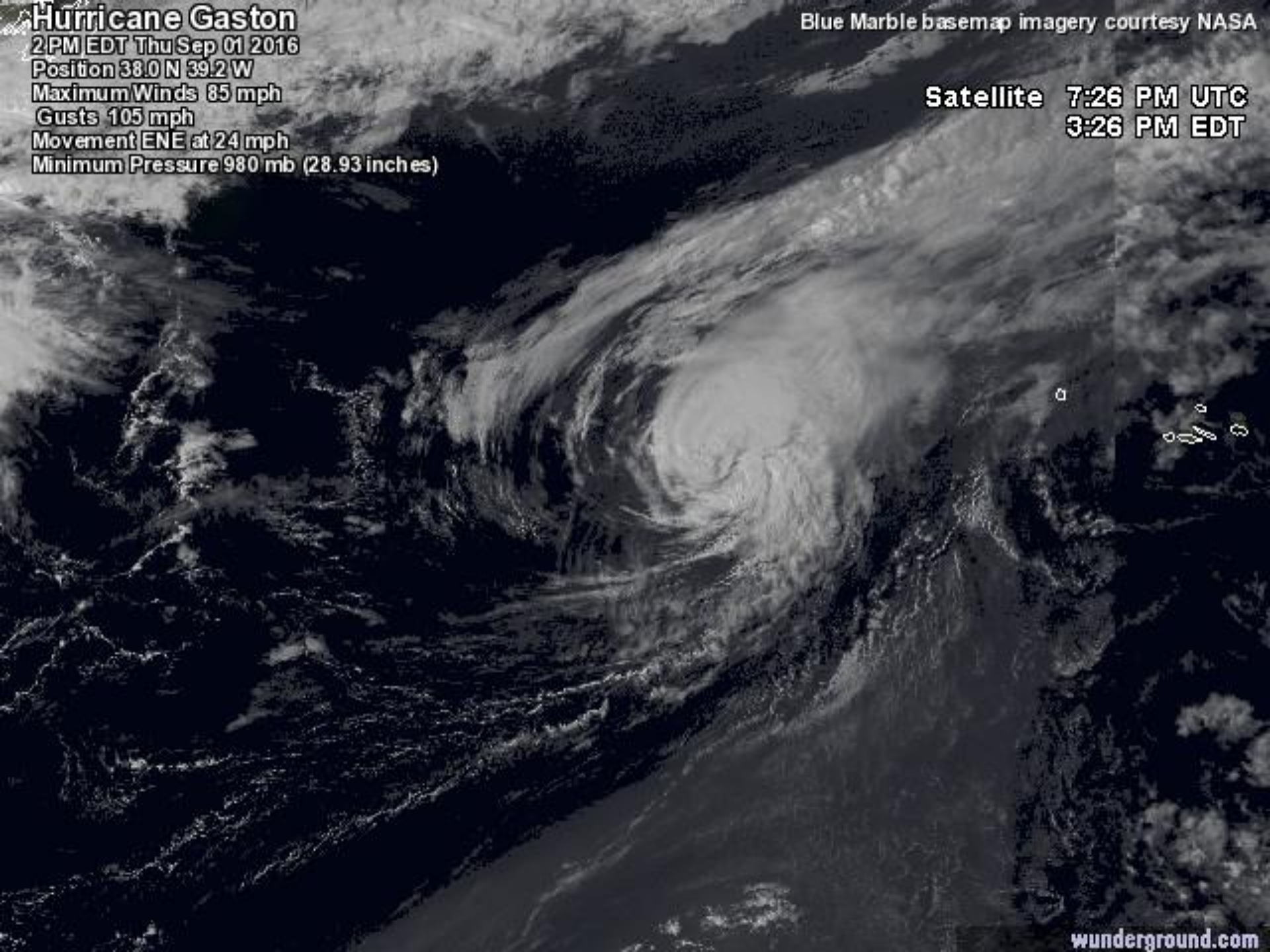
Gusts 105 mph

Movement ENE at 24 mph

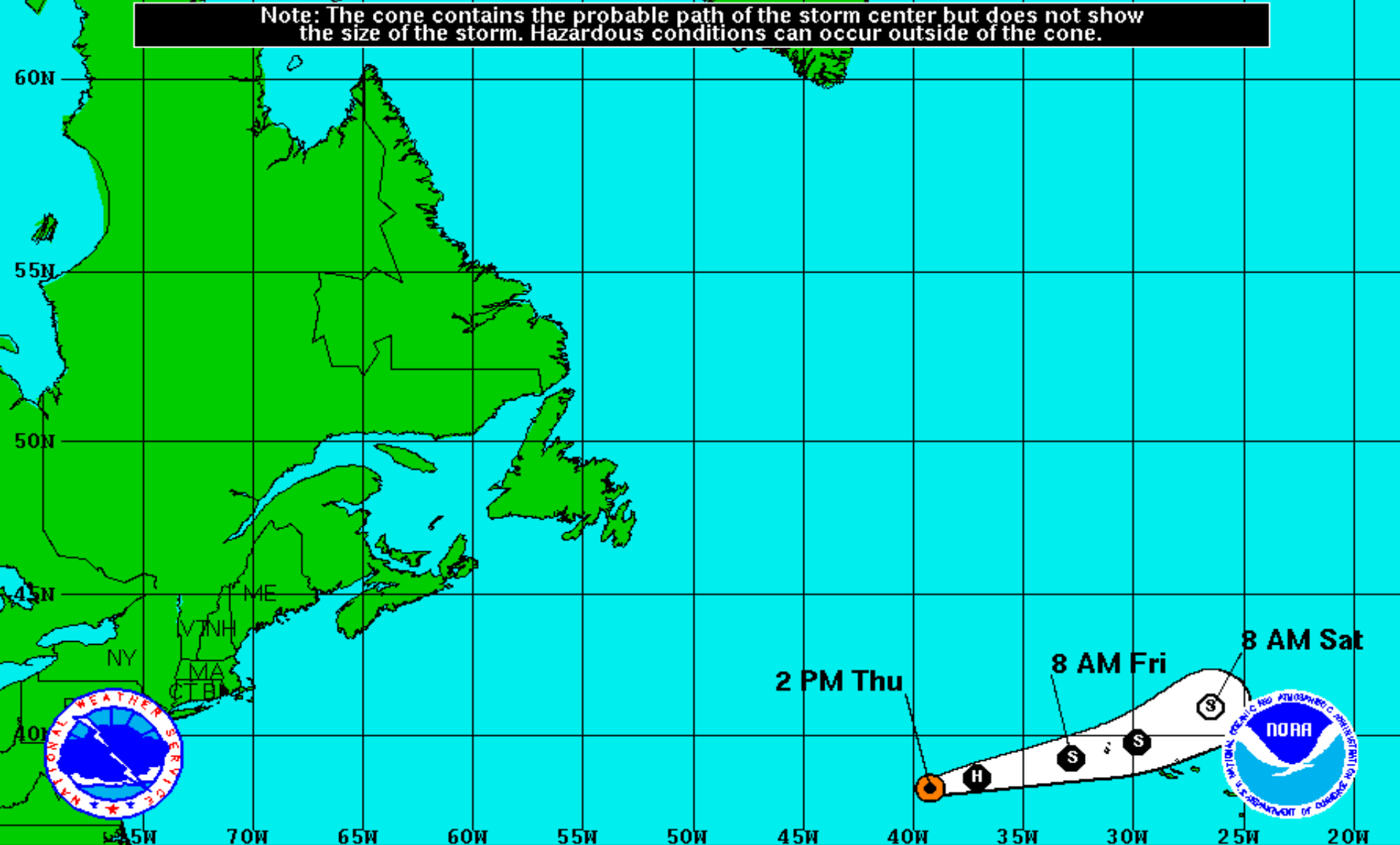
Minimum Pressure 980 mb (28.93 inches)

Blue Marble basemap imagery courtesy NASA


Satellite 7:26 PM UTC
3:26 PM EDT





Note: The cone contains the probable path of the storm center but does not show the size of the storm. Hazardous conditions can occur outside of the cone.



Hurricane Gaston
Thursday September 1, 2016
2 PM EDT Intermediate Advisory 40A
NWS National Hurricane Center

Current Information: 
Center Location 38.0 N 39.2 W
Max Sustained Wind 85 mph
Movement ENE at 24 mph

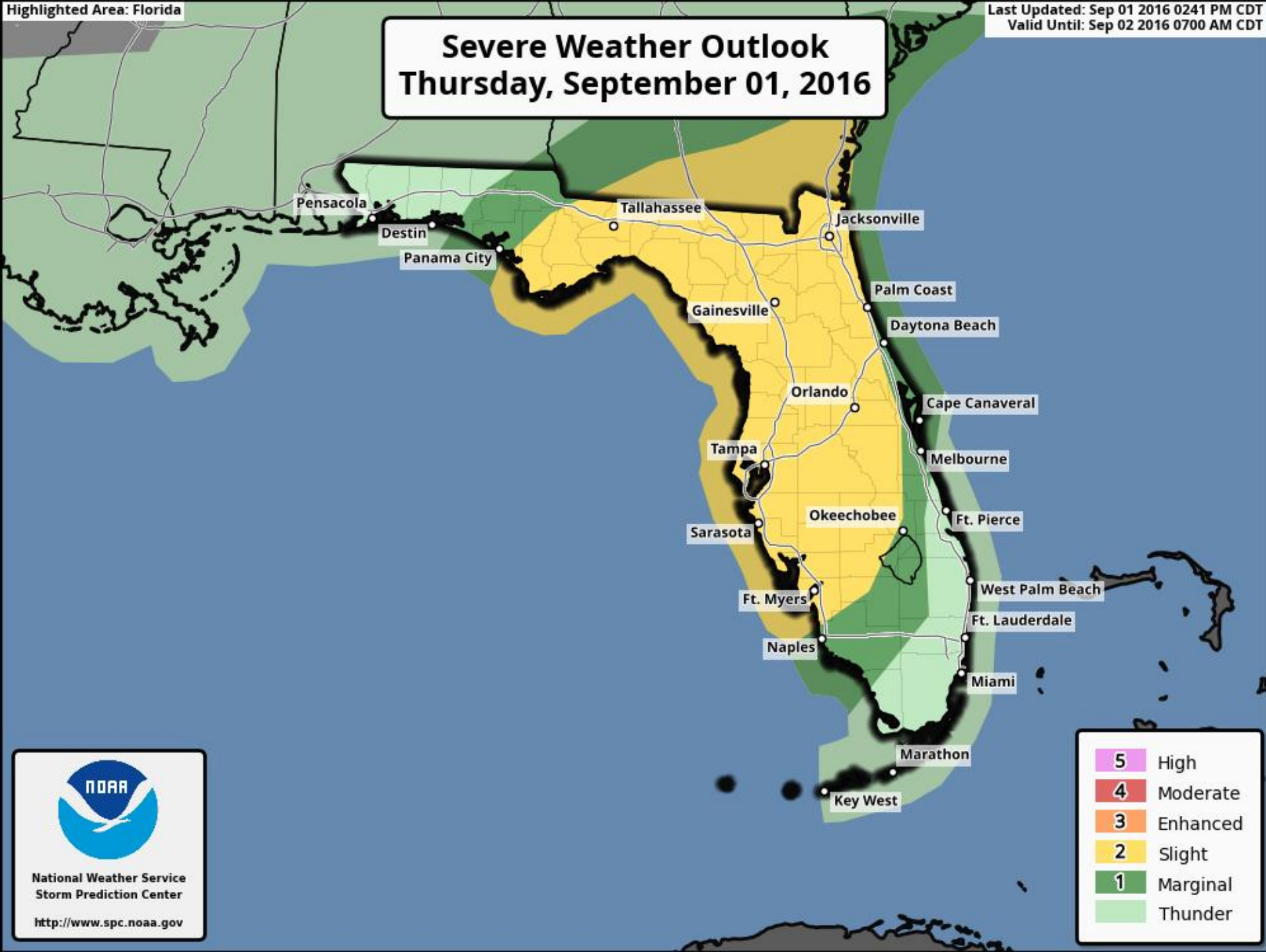
Forecast Positions:
 Tropical Cyclone  Post-Tropical
Sustained Winds: D < 39 mph
S 39-73 mph H 74-110 mph M > 110mph

Potential Track Area:
 Day 1-3  Day 4-5

Watches:
 Hurricane  Trop.Storm

Warnings:
 Hurricane  Trop.Storm

Severe Weather Outlook Thursday, September 01, 2016

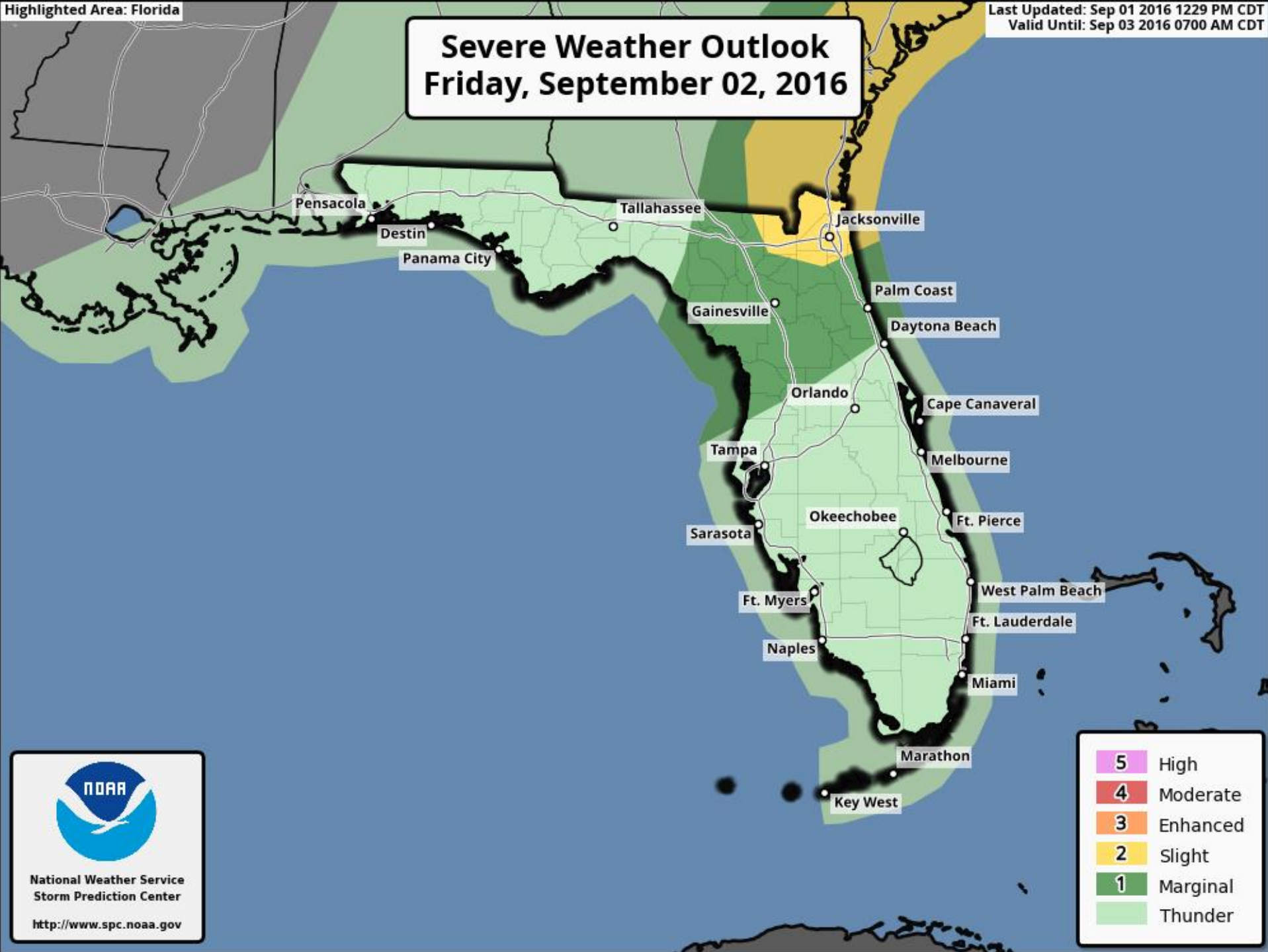


National Weather Service
Storm Prediction Center

<http://www.spc.noaa.gov>

5	High
4	Moderate
3	Enhanced
2	Slight
1	Marginal
	Thunder

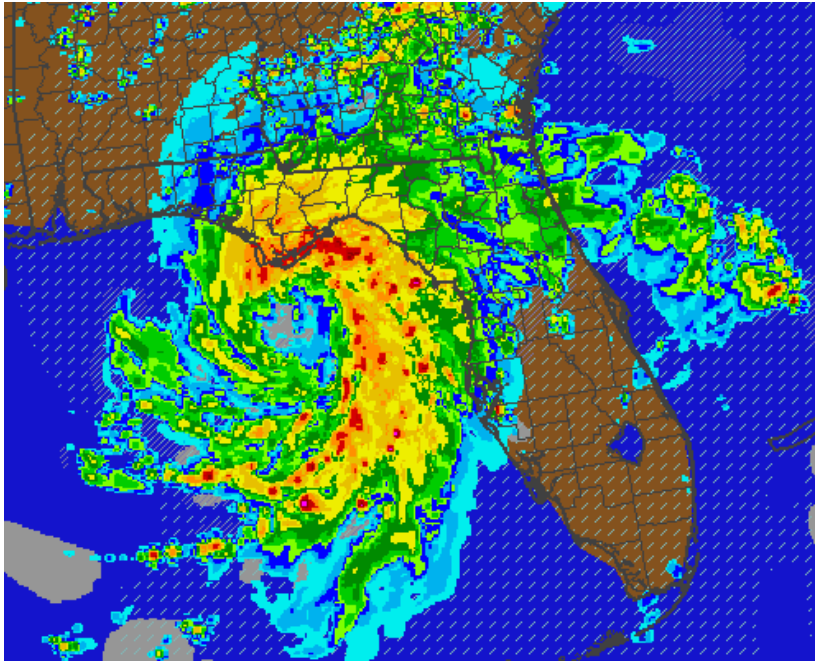
Severe Weather Outlook Friday, September 02, 2016



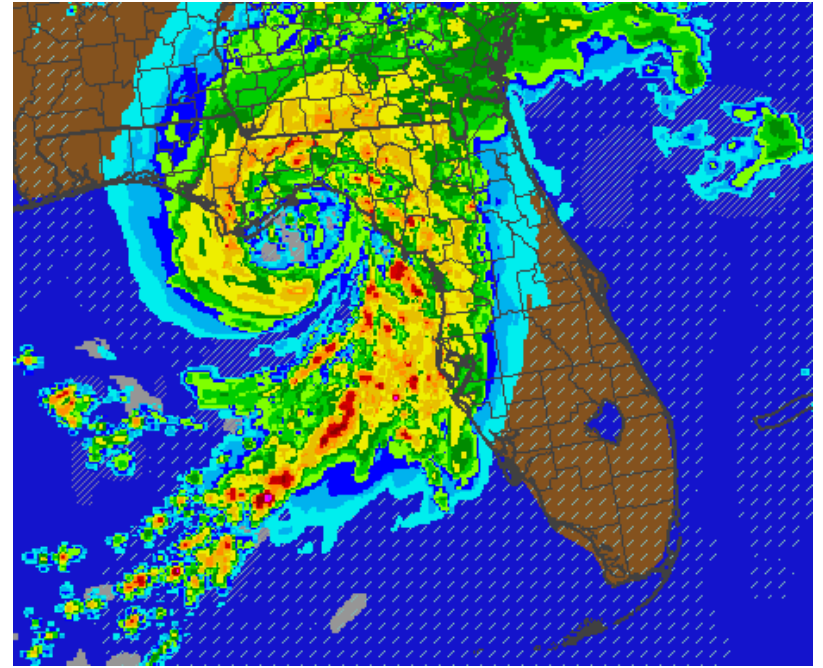
National Weather Service
Storm Prediction Center

<http://www.spc.noaa.gov>

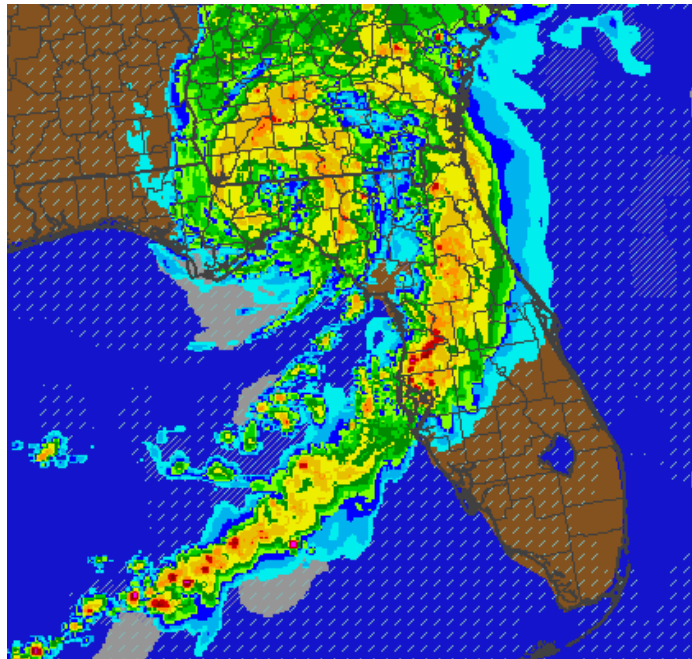
5	High
4	Moderate
3	Enhanced
2	Slight
1	Marginal
	Thunder



8pm



12am



4am



Two-Day Graphical Tropical Weather Outlook

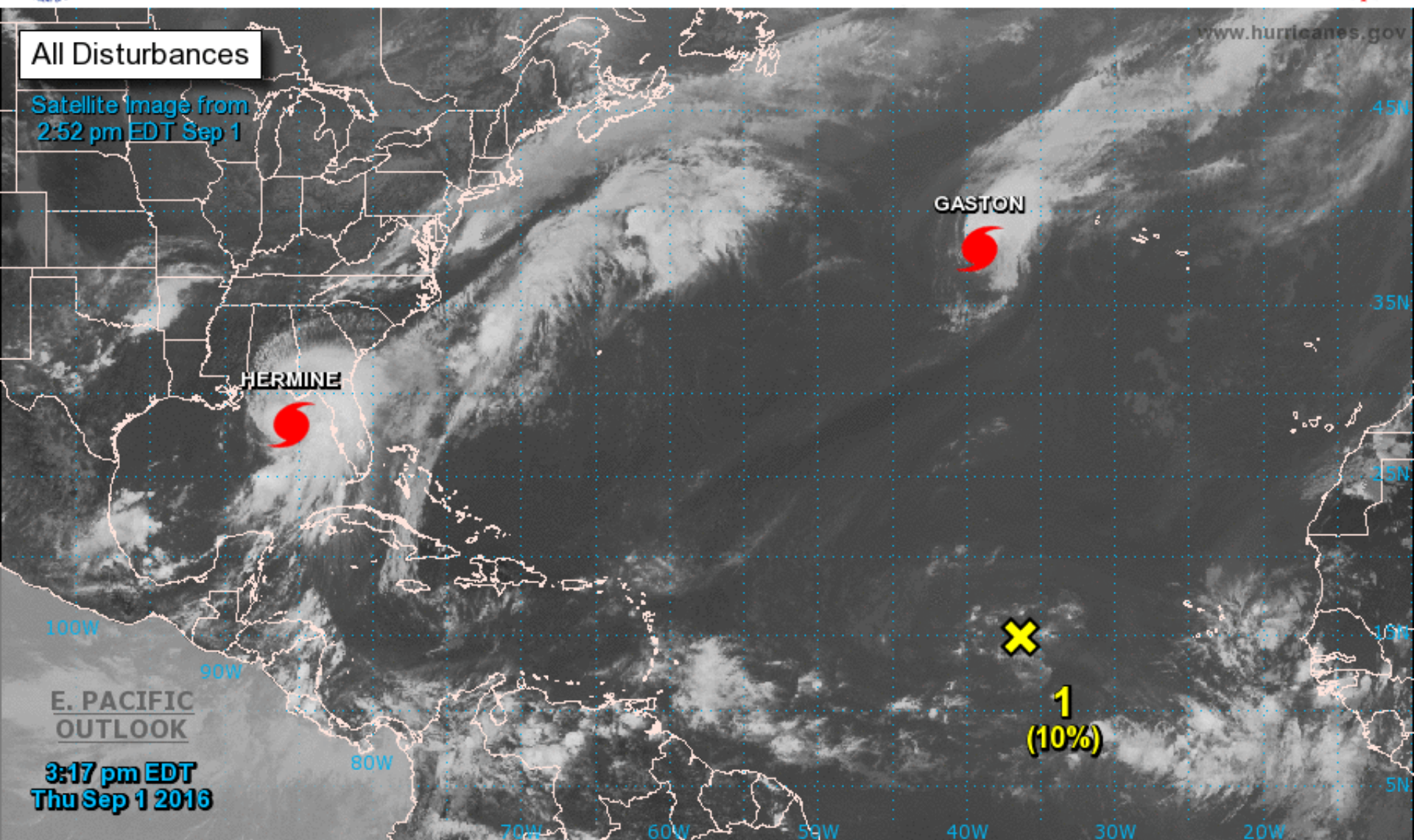
National Hurricane Center Miami, Florida



All Disturbances

Satellite image from
2:52 pm EDT Sep 1

www.hurricanes.gov



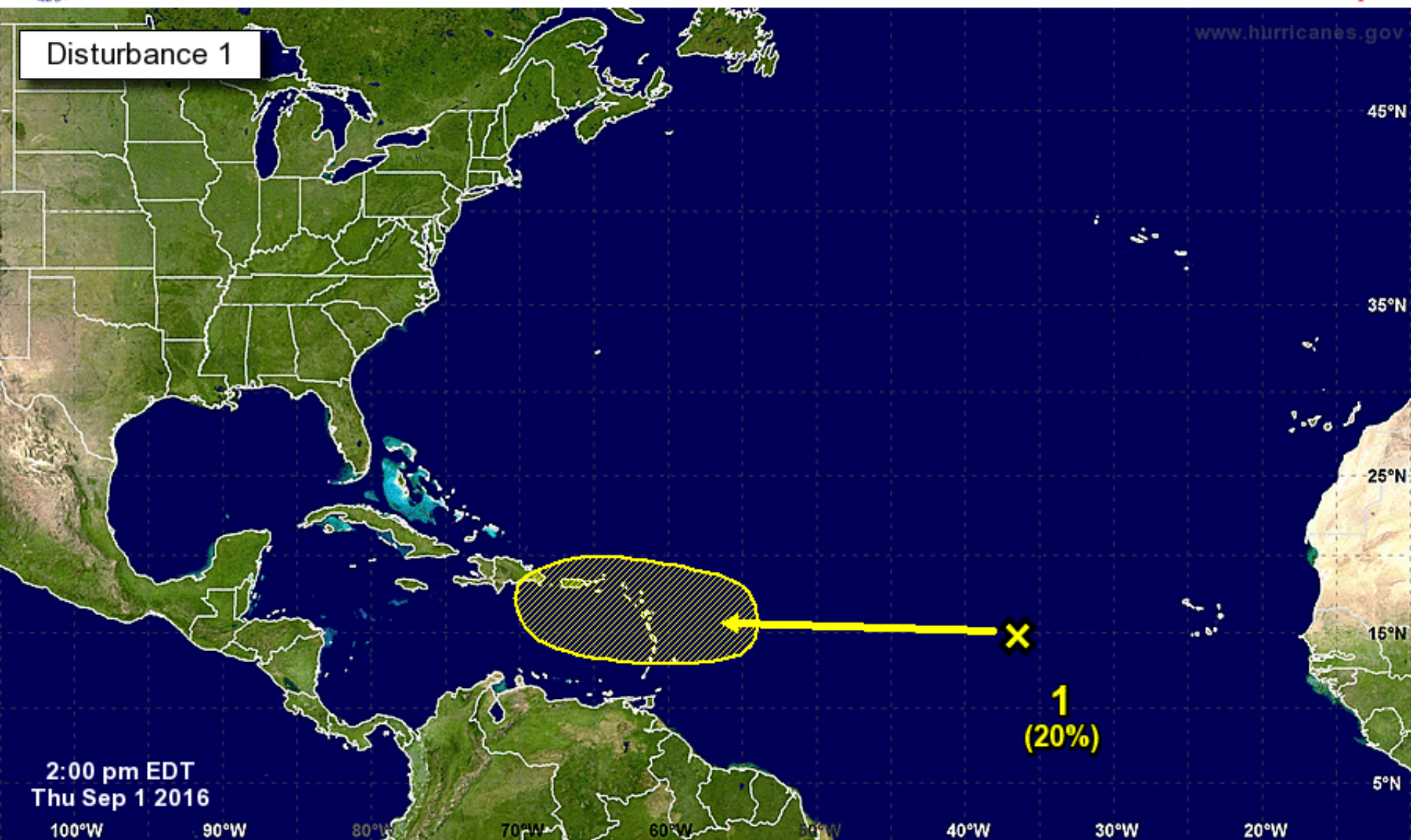
**E. PACIFIC
OUTLOOK**
**3:17 pm EDT
Thu Sep 1 2016**

Current Disturbances and Two-Day Cyclone Formation Chance: < 40% 40-60% > 60%
Tropical or Sub-Tropical Cyclone: Depression Storm Hurricane
 Post-Tropical Cyclone Remnants



Five-Day Graphical Tropical Weather Outlook

National Hurricane Center Miami, Florida



Tropical Cyclone Formation Potential for the Five-Day Period Ending at 2:00 pm EDT Tue Sep 6 2016

Chance of Cyclone Formation in Five Days: ■ Low < 40% ■ Medium 40-60% ■ High > 60%

X indicates current disturbance location; shading indicates potential formation area.

Summary:

- At 3pm EDT, reconnaissance data from a Hurricane Hunter flight indicated that Hermine had strengthened to a hurricane with winds of 75 mph.
- At 5pm EDT, Hurricane Hermine was located about 85 miles south of Apalachicola and moving north-northeast at 14 mph.
- This general motion with a slight increase in forward speed is expected over the next day or so.
- The current forecast track indicates landfall sometime early Friday morning along the Big Bend coast between Panacea and Keaton Beach as a category 1 hurricane.
- Tropical storm force winds extend outward up to 185 miles from its center.
- Hurricane Gaston continues to move quickly to the east-northeast at 29 mph toward the Azores.
- A tropical wave over the central tropical Atlantic, designated Invest 92L, is located about 800 miles west of the Cabo Verde islands. It has a 10% (low) chance of development over the next 48 hours and a 20% (low) chance of development over the next five days as it deals with dry air in its path. As it nears the Lesser Antilles early next week, conditions may become more favorable for development.

Florida Outlook:

- A **Hurricane Warning** is in effect for Gulf, Liberty, Franklin, Gadsden, Wakulla, Leon, Jefferson, Taylor, Madison, Hamilton, Suwannee, and coastal Dixie counties.
- A **Tropical Storm Warning** is in effect for counties surrounding the hurricane-warned counties of North and Central Florida, from Washington and Bay counties in the Panhandle to all Northeast Florida counties and south to Hillsborough and Pinellas counties.
- A **Storm Surge Warning** is in effect for coastal areas from Indian Pass to Longboat Key, including Tampa Bay.
- **Flash Flood Watches** and **Flood Watches** are in effect for much of North and west Central Florida.
- A **Tornado Watch** is currently in effect for much of Central Florida. Isolated tornadoes are typical of landfalling tropical systems. Additional tornado watches may be issued as Hermine moves through Florida overnight.
- Several **River Flood Warnings** have been issued for some North and west Central Florida waterways.
- Tropical storm force winds are likely for much of the Big Bend and Northeast Florida and other warned areas beginning late this evening and overnight. Hurricane force winds are likely along the Big Bend coast as Hermine makes landfall and along its path as it moves inland overnight.
- Storm surge up to 9 feet is possible along the Big Bend coast, and surge between 4 and 7 feet is possible within the remainder of the Storm Surge Warning areas.
- A high threat of rip currents is expected for most Florida beaches through the weekend.
- Storm total rainfall amounts between 5 and 10 inches are possible, with local amounts between 15 and 20 inches possible.

The next briefing packet will be issued Friday morning. For more information, visit the NHC website at www.nhc.noaa.gov.



TROPICAL UPDATE

Created by:

William Watson, Assistant State Meteorologist
william.watson@em.myflorida.com

State Meteorological Support Unit
Florida Division of Emergency Management

Users wishing to subscribe (approval pending) to this distribution list, register at
https://public.govdelivery.com/accounts/FLDEM/subscriber/new?topic_id=SERT_Met_Tropics.
Other reports available for subscription are available at
<https://public.govdelivery.com/accounts/FLDEM/subscriber/new?preferences=true>