



TROPICAL UPDATE

8 AM EDT

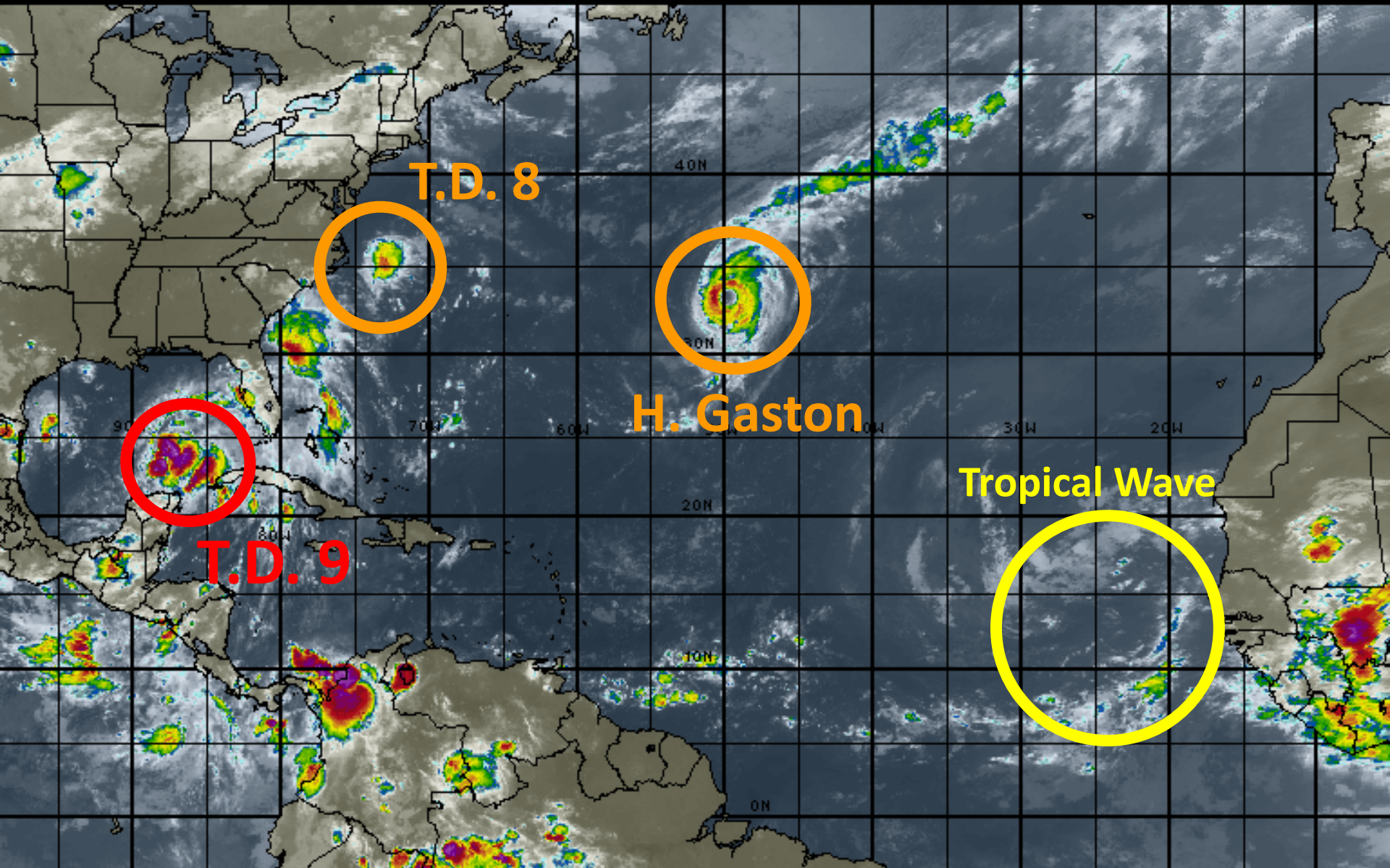
Wednesday, August 31, 2016

**Tropical Depression Nine, Tropical
Depression Eight, Hurricane Gaston
& Invest 92L (40%)**

This update is intended for government and emergency response officials, and is provided for informational and situational awareness purposes only. Forecast conditions are subject to change based on a variety of environmental factors. For additional information, or for any life safety concerns with an active weather event please contact your County Emergency Management or Public Safety Office, local National Weather Service forecast office or visit the National Hurricane Center website at www.nhc.noaa.gov.

Atlantic Basin Satellite Image

09:00 31-AUG-2016 GMT ©Copyright WSI Corporation <http://www.wsi.com>



Tropical Depression Nine

4 AM CDT Wed Aug 31 2016

Position 24.5 N 88.1 W

Maximum Winds 35 mph

Gusts 45 mph

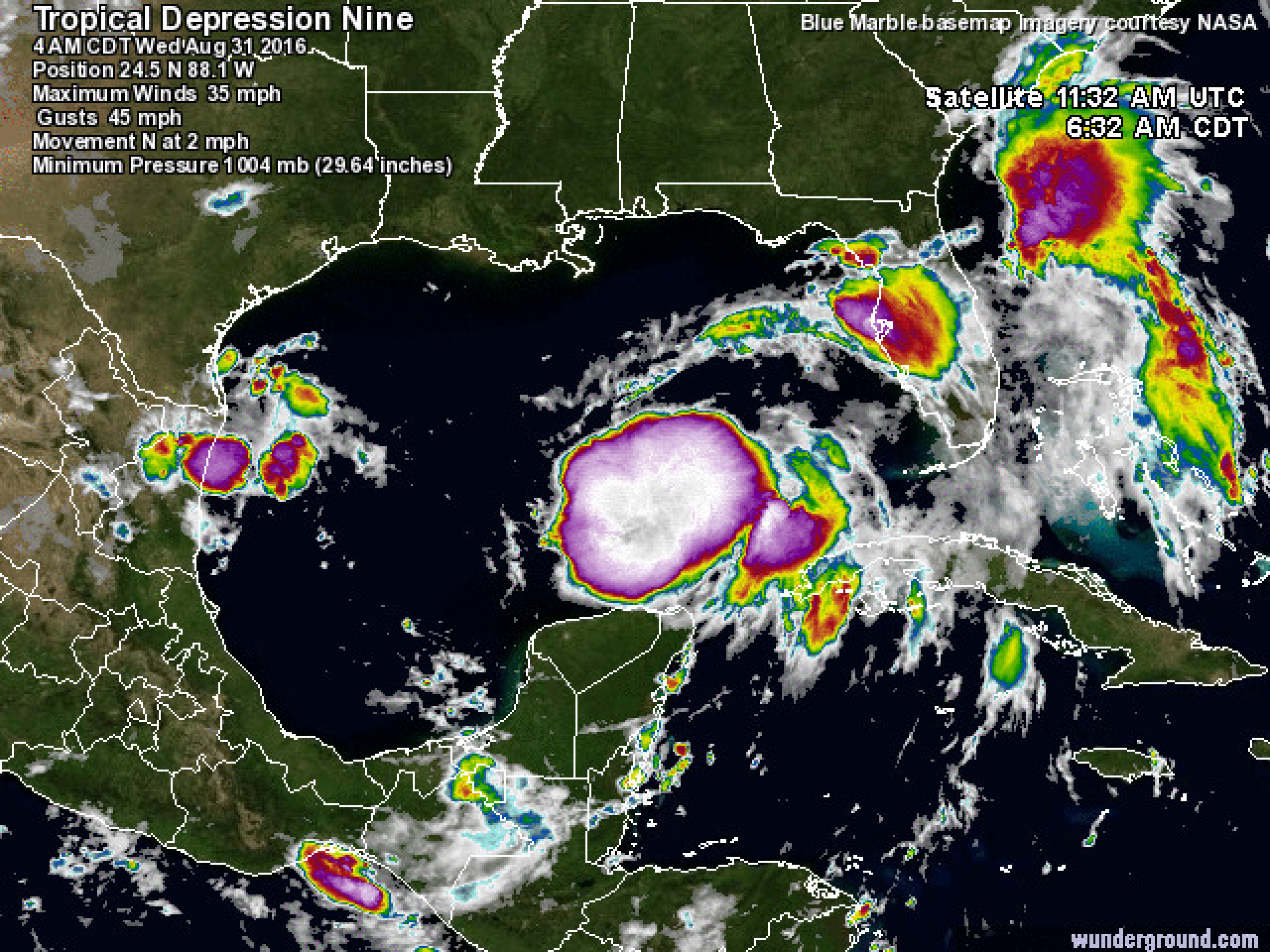
Movement N at 2 mph

Minimum Pressure 1004 mb (29.64 inches)

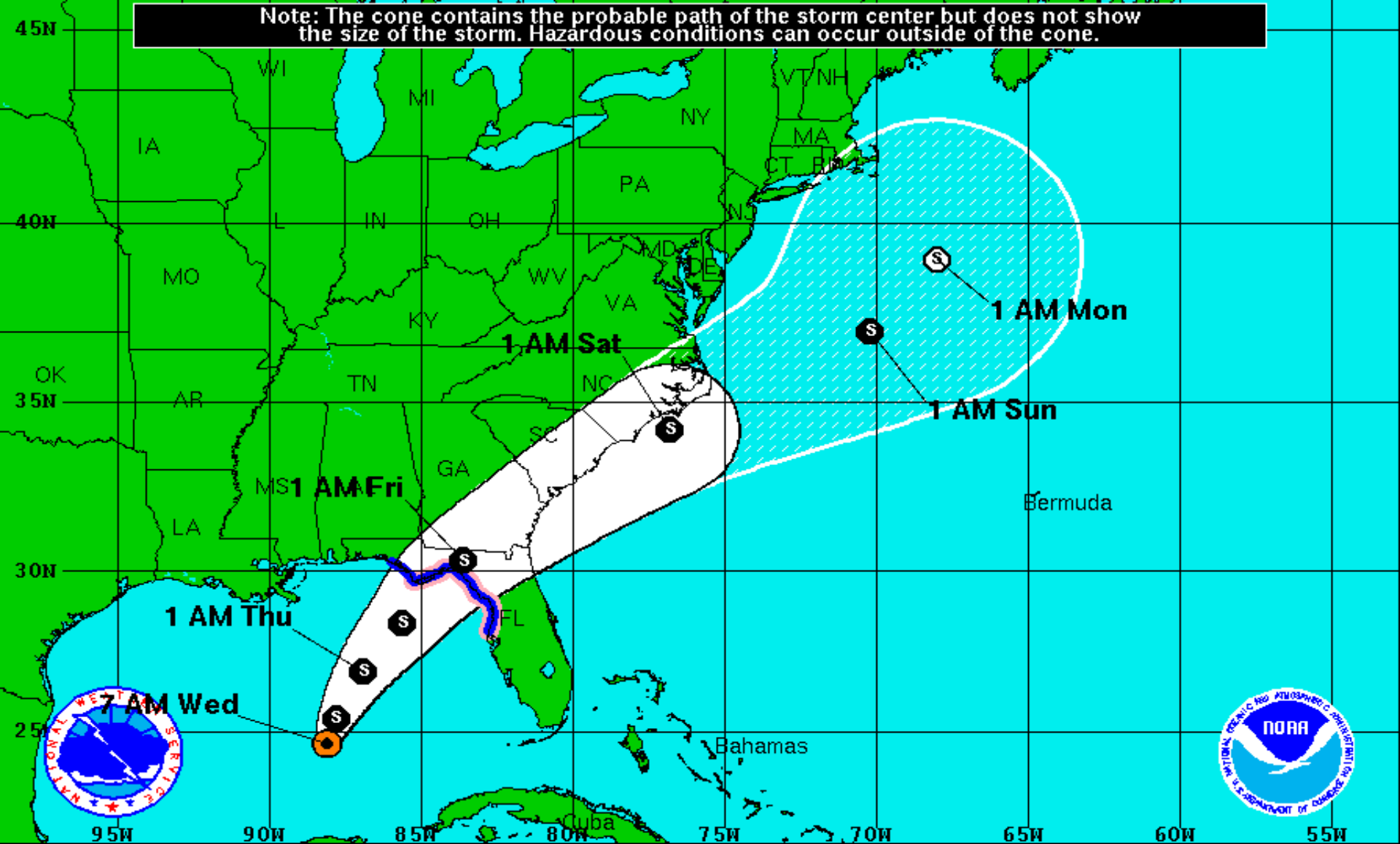
Blue Marble basemap imagery courtesy NASA

Satellite 11:32 AM UTC

6:32 AM CDT



Note: The cone contains the probable path of the storm center but does not show the size of the storm. Hazardous conditions can occur outside of the cone.



Tropical Depression Nine

Wednesday August 31, 2016

7 AM CDT Intermediate Advisory 11A

NWS National Hurricane Center

Current Information:

Center Location 24.6 N 88.1 W

Max Sustained Wind 35 mph

Movement N at 2 mph



Forecast Positions:

● Tropical Cyclone ○ Post-Tropical

Sustained Winds: D < 39 mph

S 39-73 mph H 74-110 mph M > 110mph

Potential Track Area:

 Day 1-3  Day 4-5

Watches:

 Hurricane  Trop.Storm

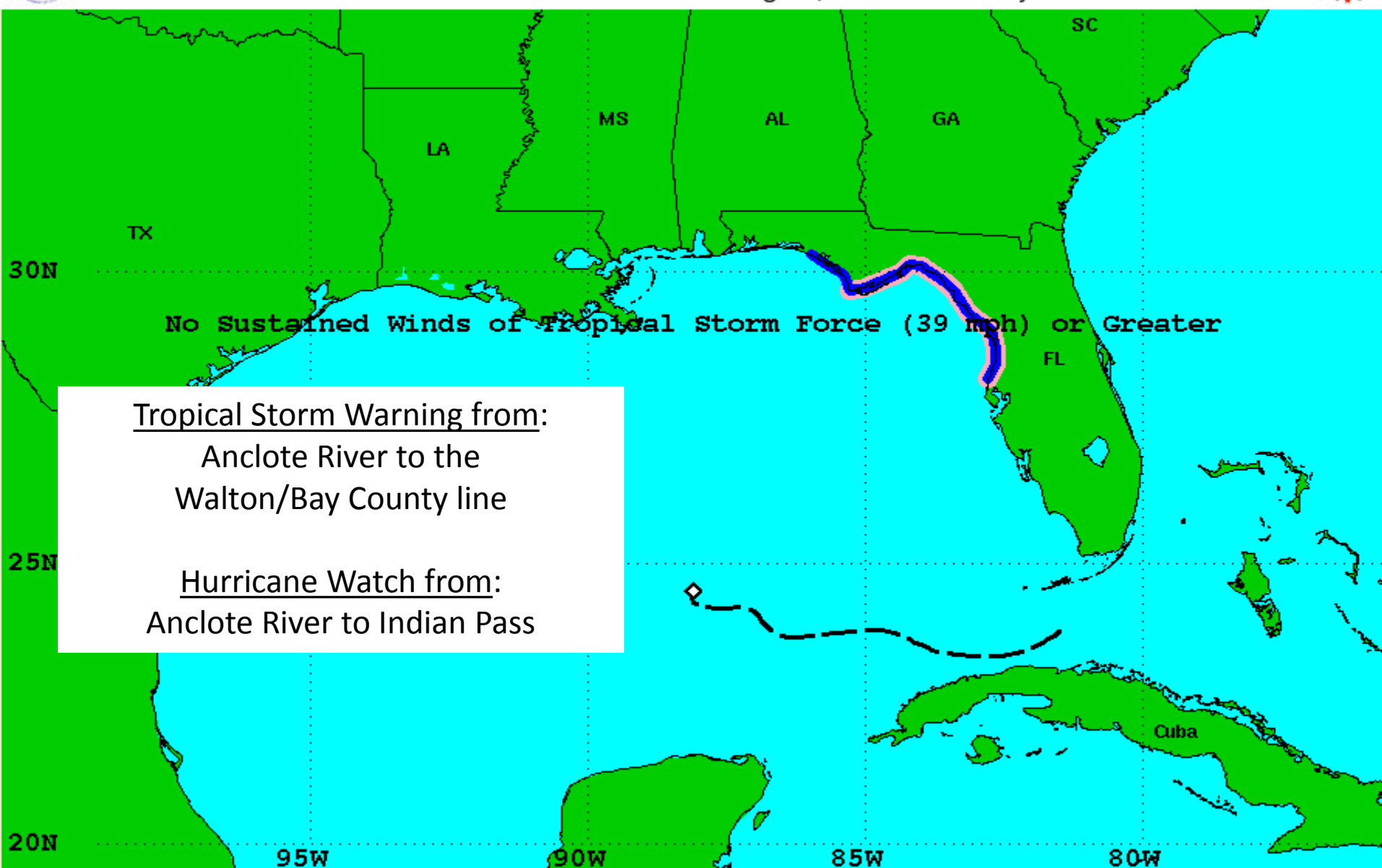
Warnings:

 Hurricane Trop.Storm



Surface Wind Field of Tropical Depression Nine

Sustained Winds as of 400 AM CDT Wed Aug 31, 2016 Advisory Number 11



No Sustained Winds of Tropical Storm Force (39 mph) or Greater

Tropical Storm Warning from:

Ancote River to the
Walton/Bay County line

Hurricane Watch from:

Ancote River to Indian Pass

Watches:

- Hurricane Watch
- Tropical Storm Watch

Warnings:

- Hurricane Warning
- Tropical Storm Warning

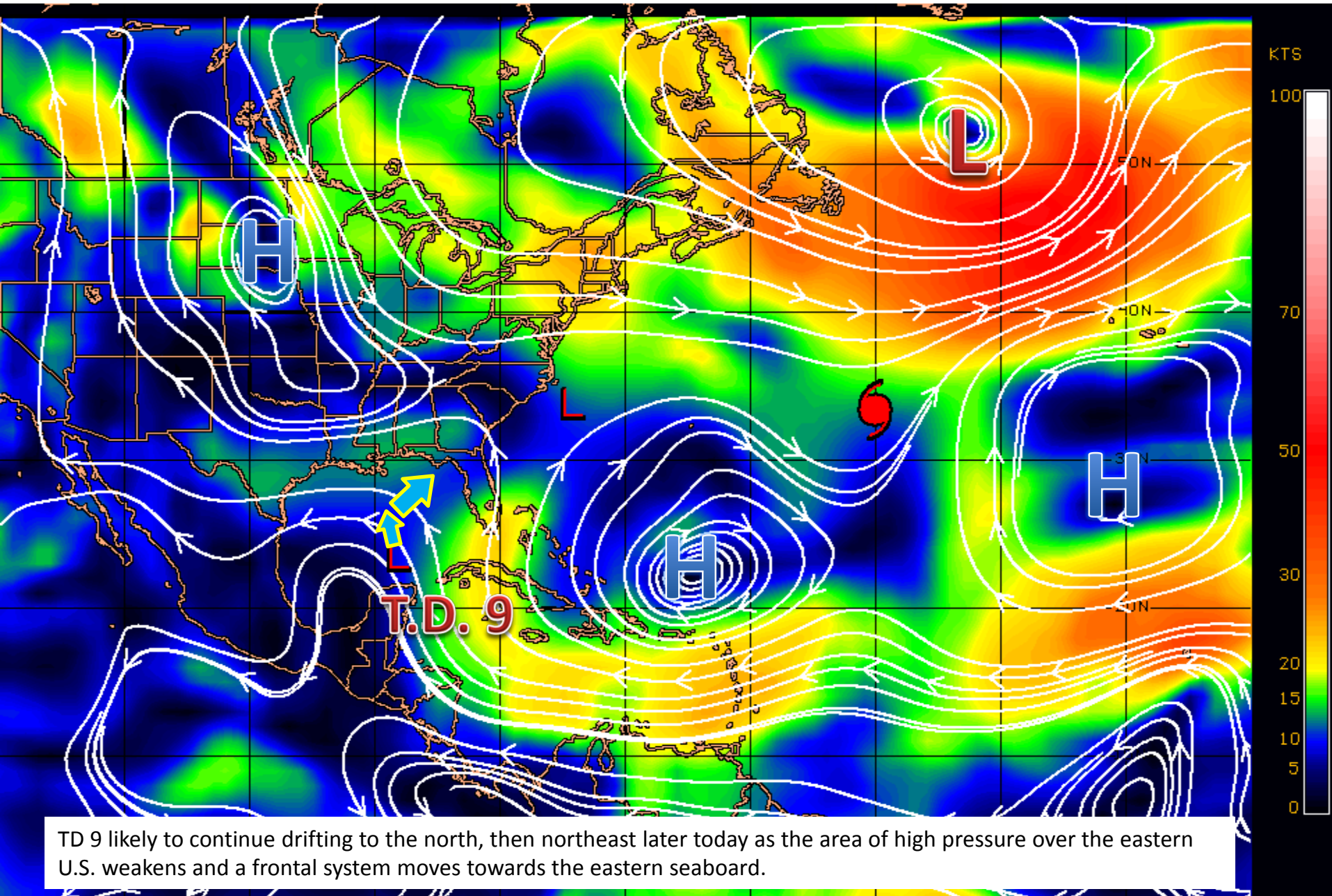
Sustained Winds:

- Hurricane Force
- Tropical Storm Force

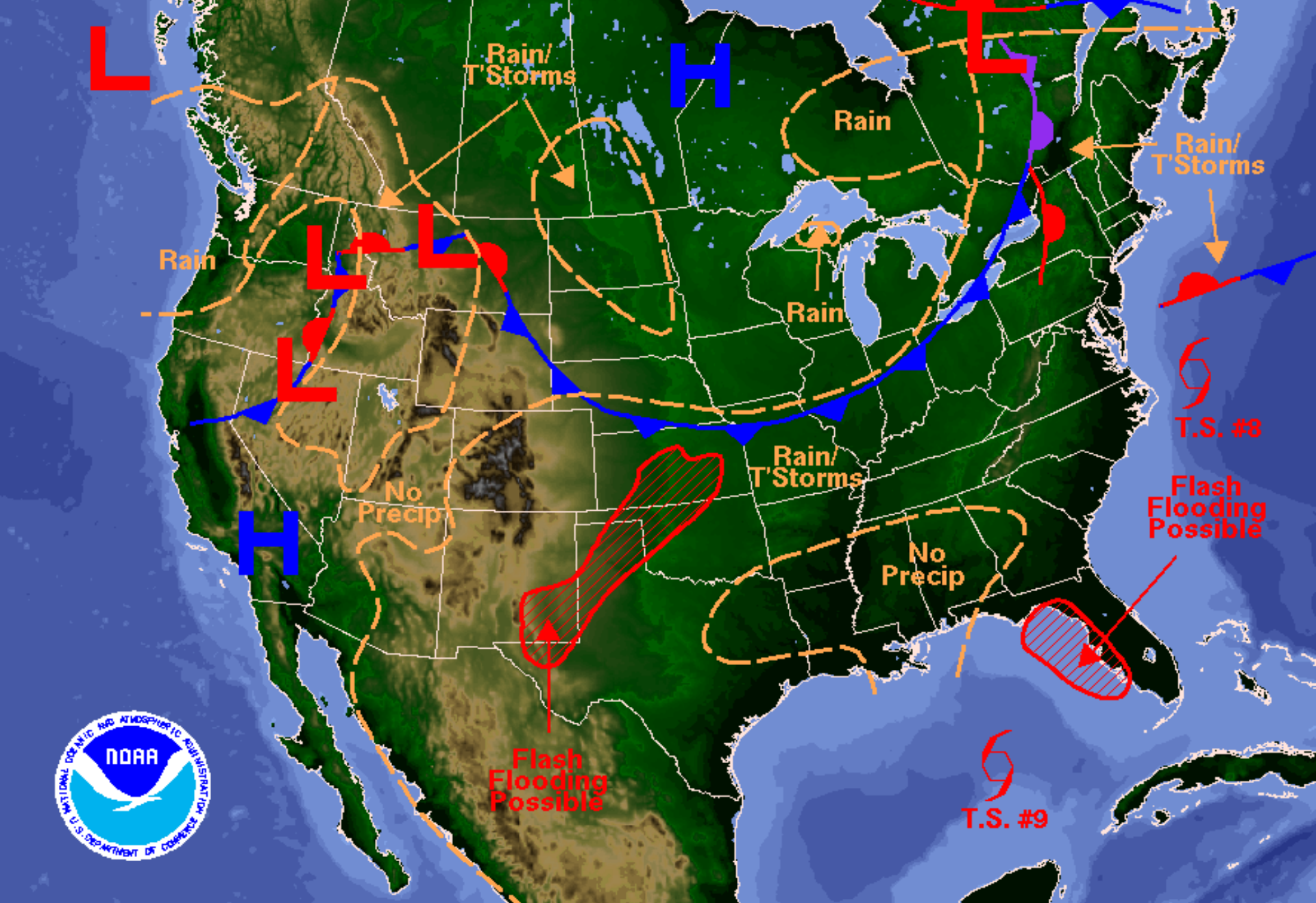
Position:

- Center as of 400 AM CDT
- Past Track

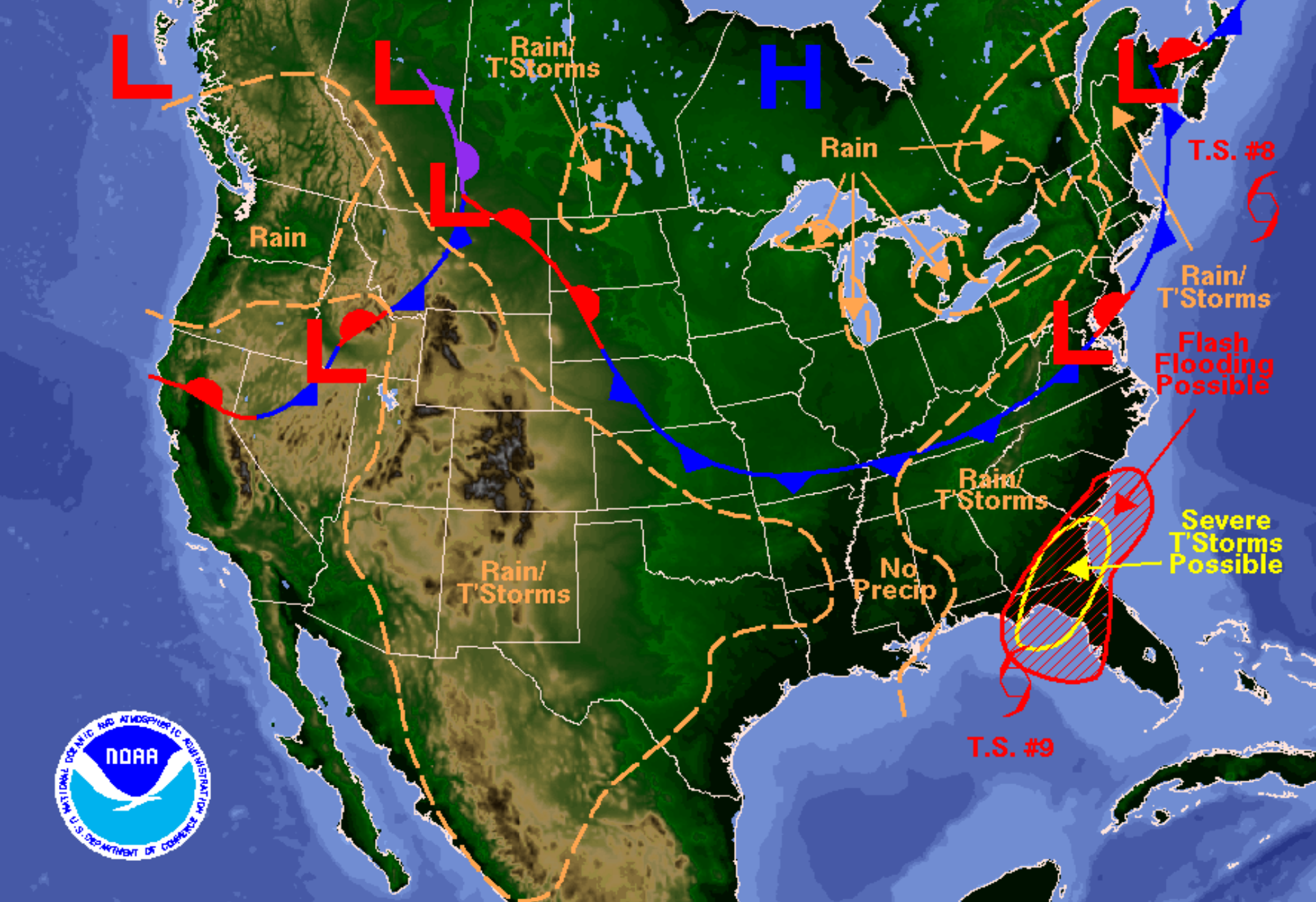
Steering Currents



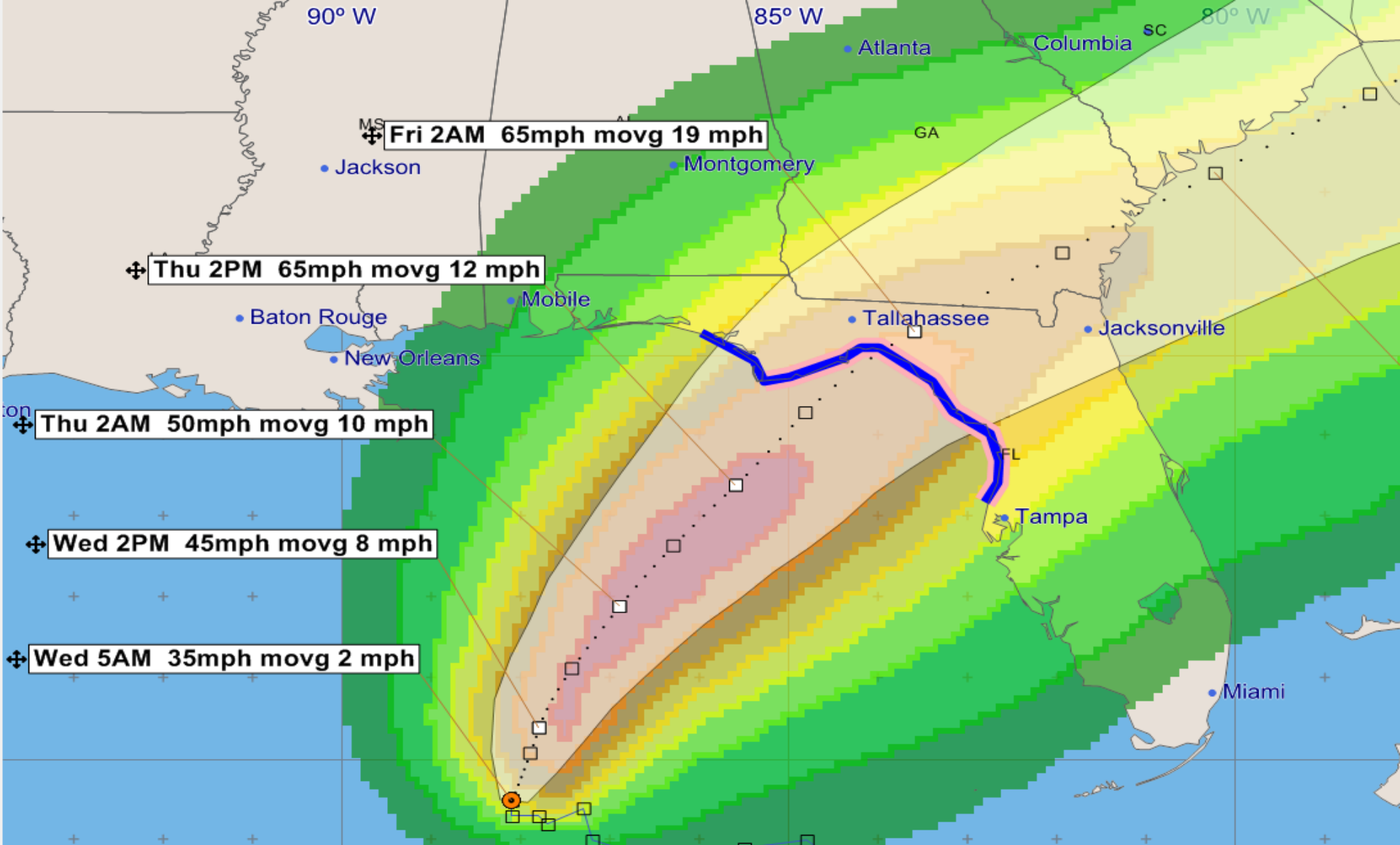
TD 9 likely to continue drifting to the north, then northeast later today as the area of high pressure over the eastern U.S. weakens and a frontal system moves towards the eastern seaboard.



Weather Forecast for Wed, Aug 31, 2016, issued 4:37 AM EDT
DOC/NOAA/NWS/NCEP/Weather Prediction Center
Prepared by McCreynolds based on WPC, SPC and NHC forecasts



Weather Forecast for Thu, Sep 01, 2016, issued 4:43 AM EDT Wed, Aug 31, 2016
DOC/NOAA/NWS/NCEP/Weather Prediction Center
Prepared by McCreynolds based on WPC, SPC and NHC forecasts



Tropical Depression Nine - Wednesday, August 31, 2016 5 AM EDT Advisory #11

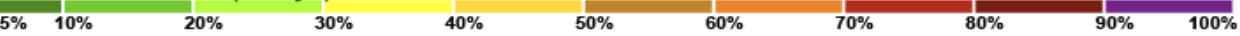
Center Location: 24.5 N 88.1 W Maximum Sustained Winds: 35 mph Movement: 2 mph N

forecast positions Potential Track Area: day 1-3 day 4-5 Surface Wind Field: at current location

Watches: hurricane tropical storm Warnings: hurricane tropical storm

Sustained Wind Speeds: tropical storm ≥ 34 kt/39mph strong tropical storm ≥ 50 kt/58mph hurricane ≥ 64 kt/74mph

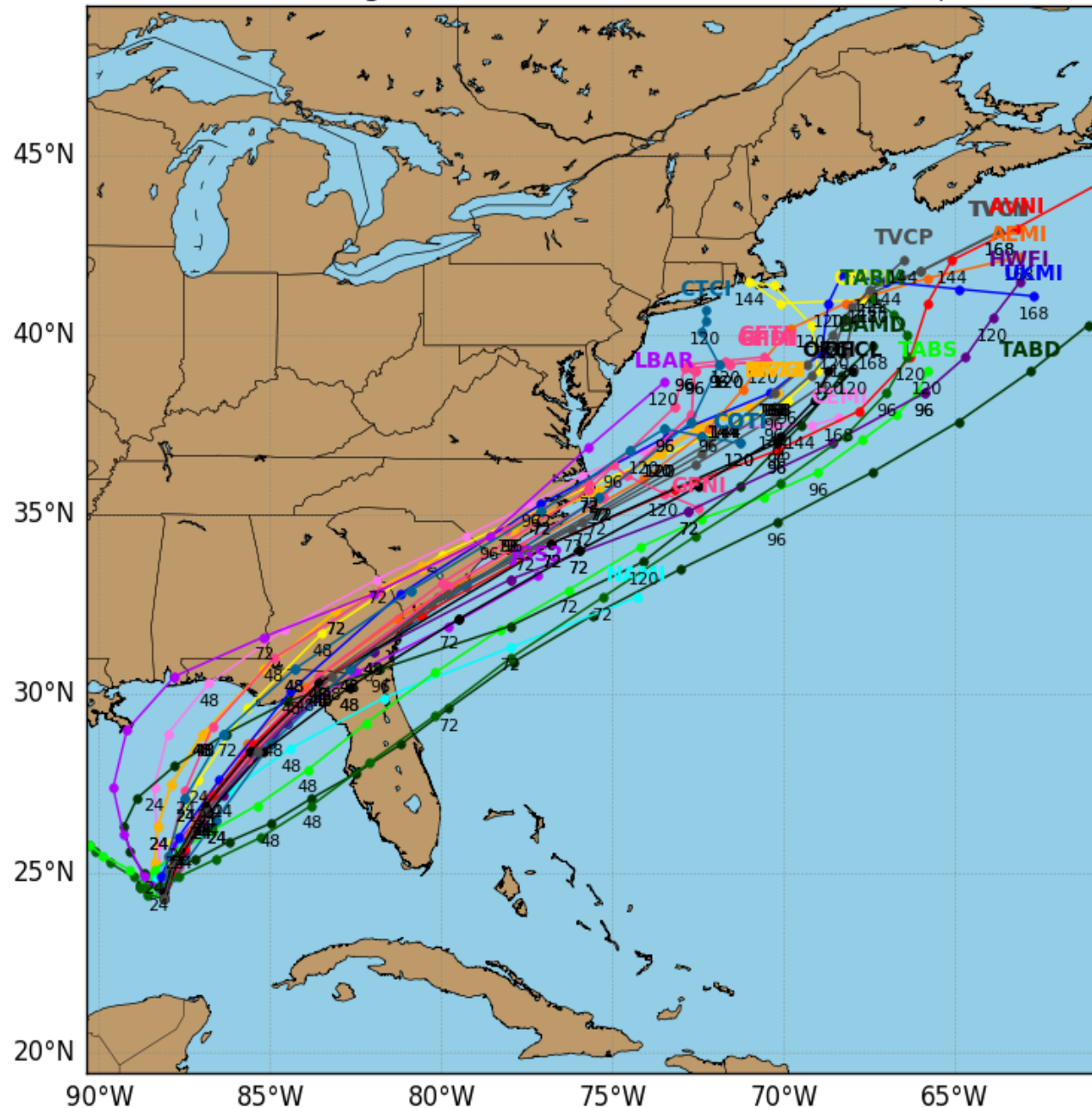
Probability of tropical storm force surface winds (1-minute average ≥ 34 kt/39mph) from all tropical cyclones for the 120 hours (5 days) from 2AM EDT Wed 8/31/2016 to 2AM EDT Mon 9/5/2016



Tropical Depression 09L Model Track Guidance

Initialized at 06z Aug 31 2016

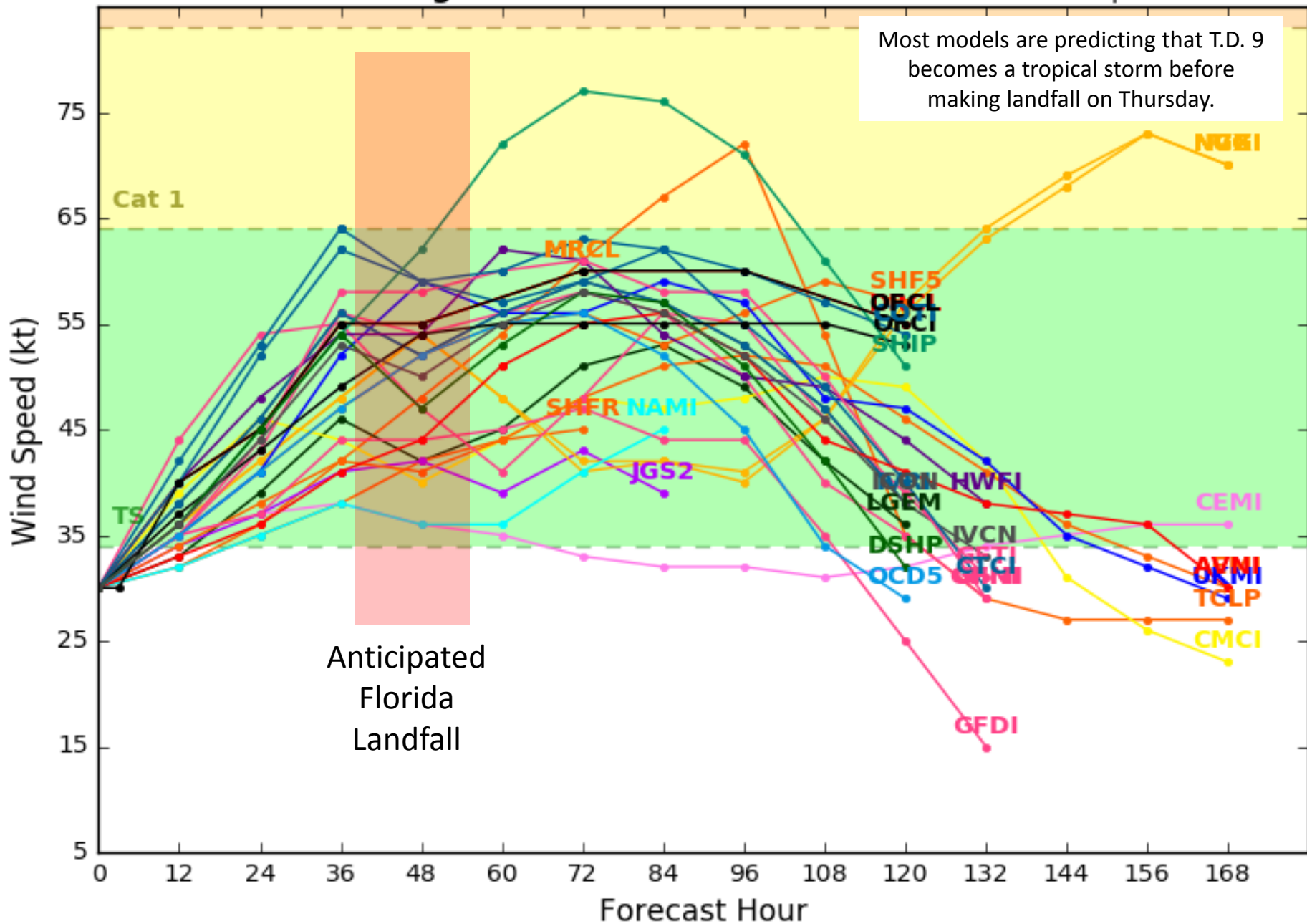
Levi Cowan - tropicaltidbits.com



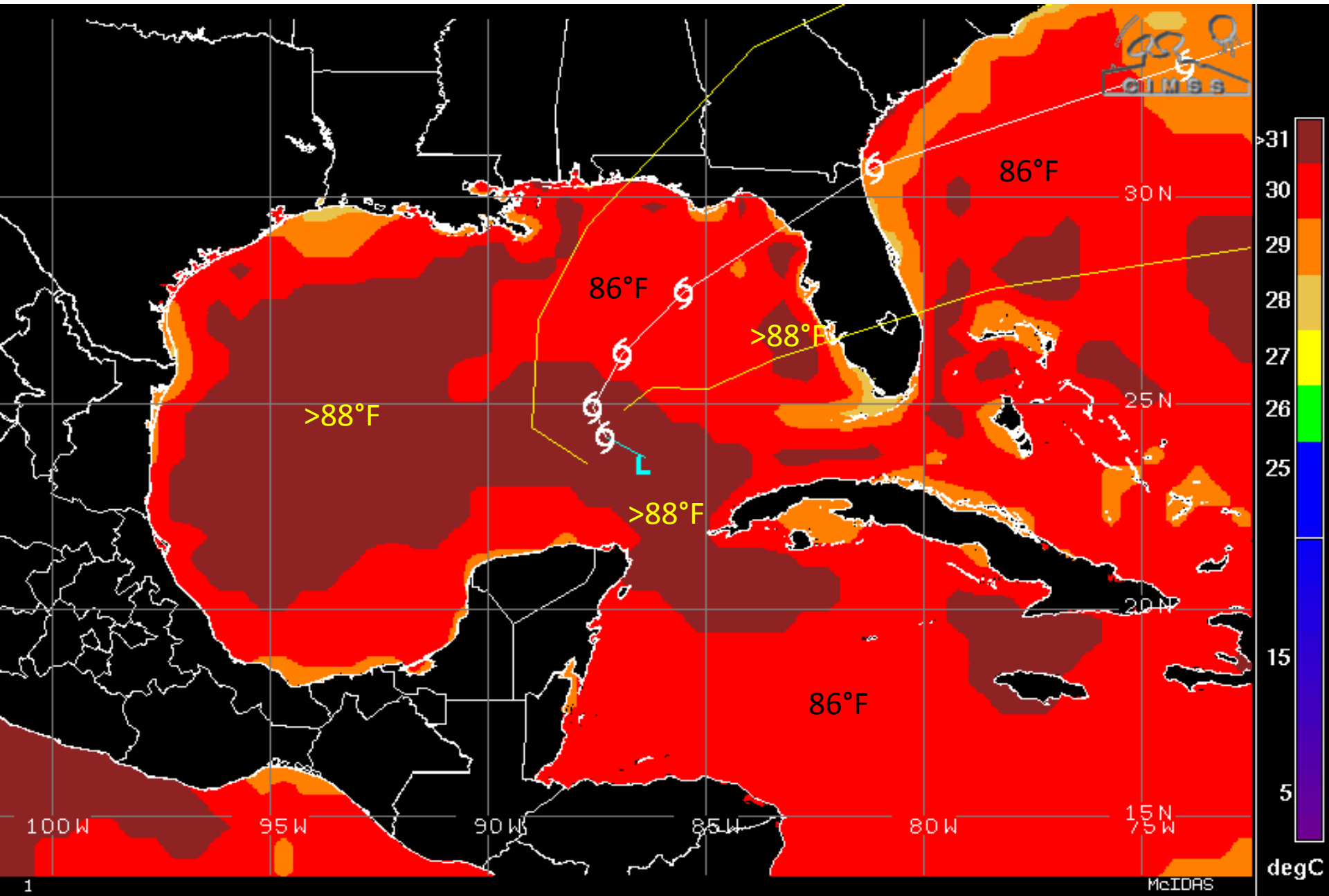
Forecast tracks continue to come into better agreement on the possible track of Tropical Depression 9. Still, a wide range of possibilities exist from the Tampa north through Pensacola, with most models bringing the storm into the Big Bend and Nature Coast region. The models have been trending westward over the past few runs, and now it seems that the system will make landfall in or around Apalachee Bay.

There is still uncertainty in regards to the timing of landfall, which could be as early as 40 hours or as late as 56 hours from now. (Forecast landfall is Thursday evening).

Levi Cowan - tropicaltidbits.com



Sea Surface Temperatures near T.D. 9



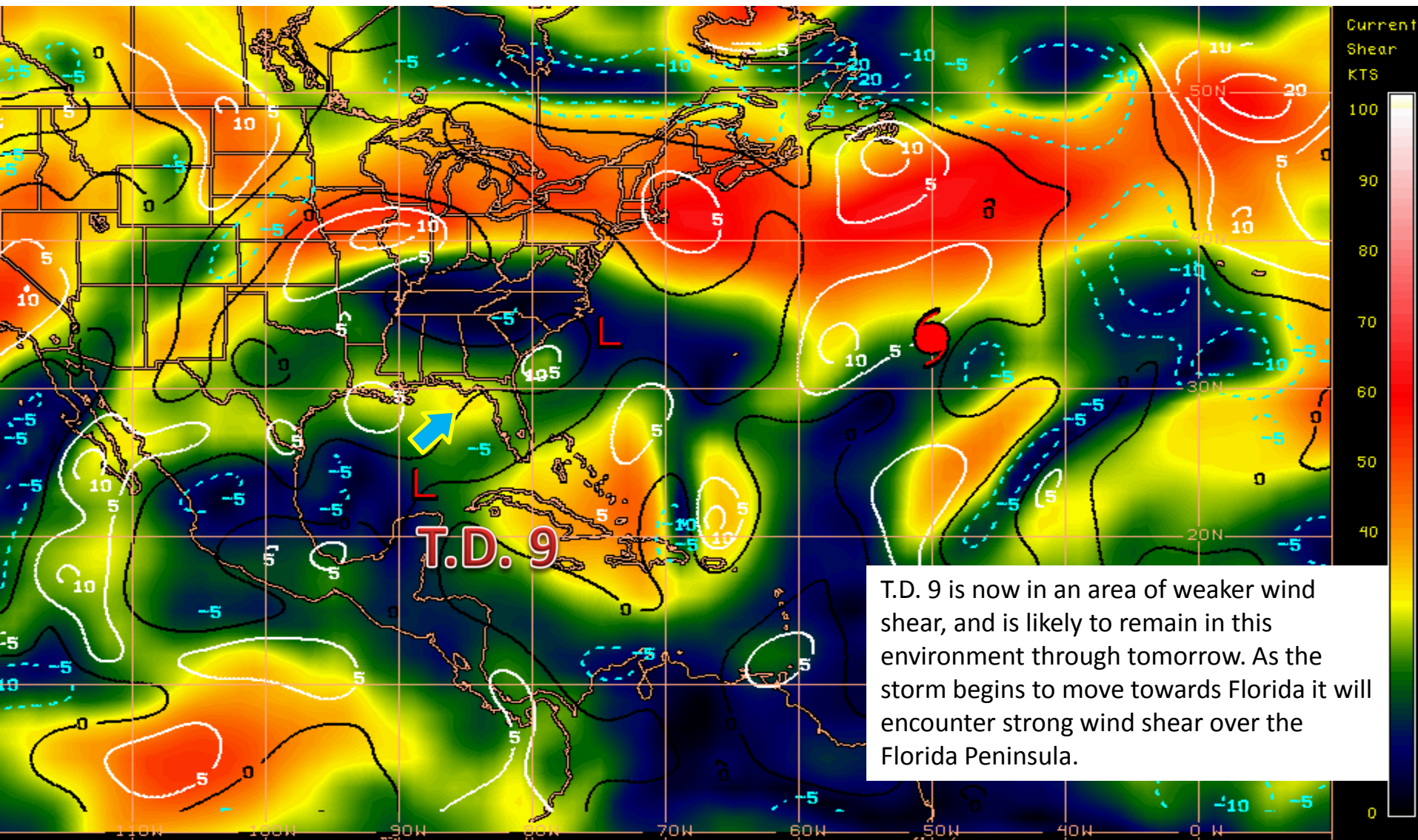
TD 9 Water Vapor Satellite Image

Environmental conditions are favorable for additional strengthening over the next 24 hours.

Dry Air



Current Wind Shear (shaded) and Shear Tendency (contours)

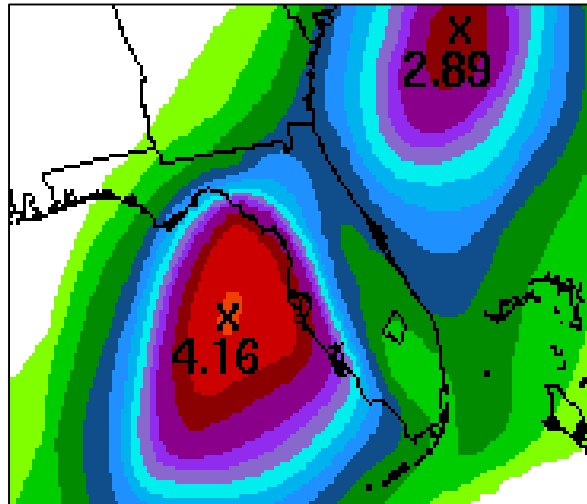


T.D. 9 is now in an area of weaker wind shear, and is likely to remain in this environment through tomorrow. As the storm begins to move towards Florida it will encounter strong wind shear over the Florida Peninsula.

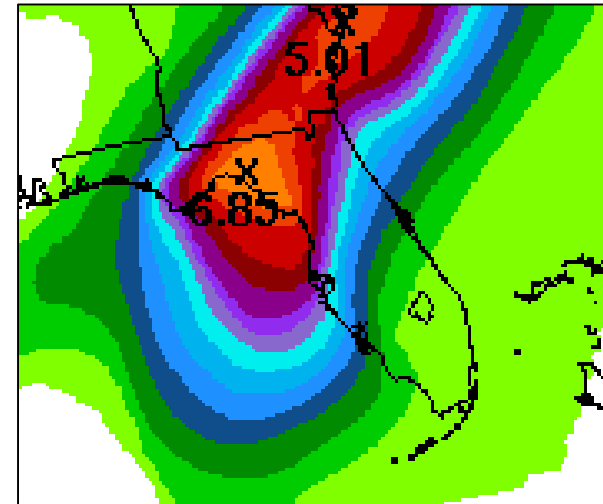
Shear Tendency (KTS) Over Past 24 Hours: Increasing — Decreasing ----

Current Rainfall Forecast

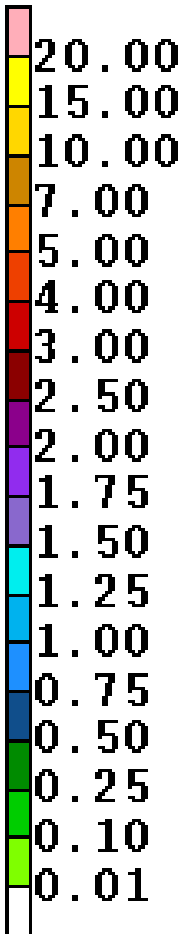
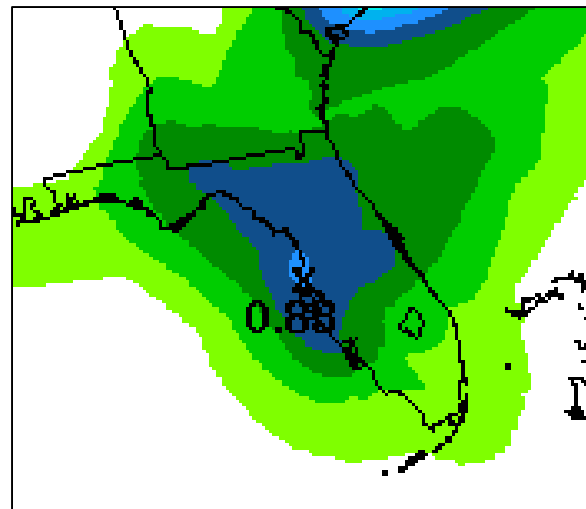
Wednesday

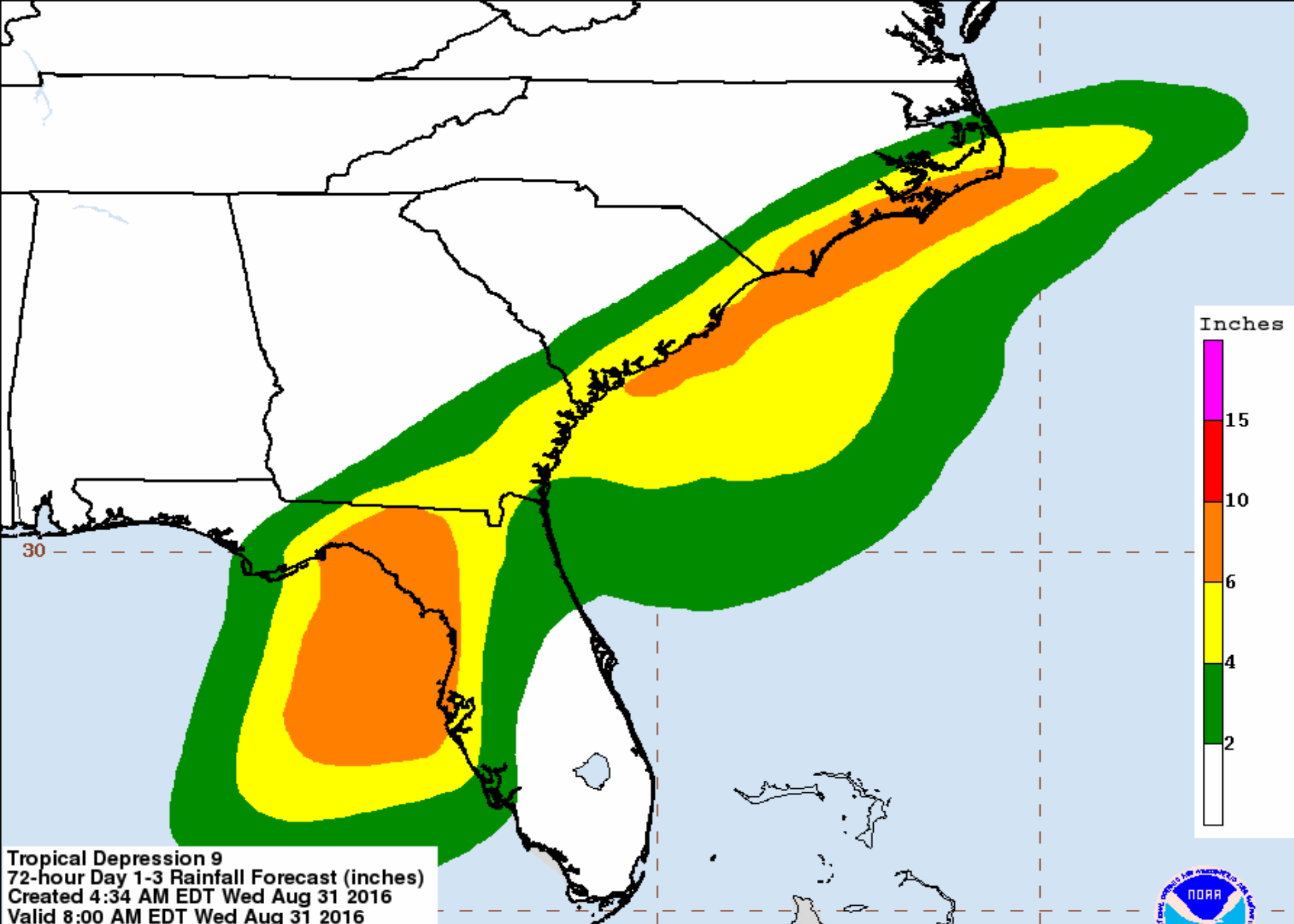


Thursday



Friday



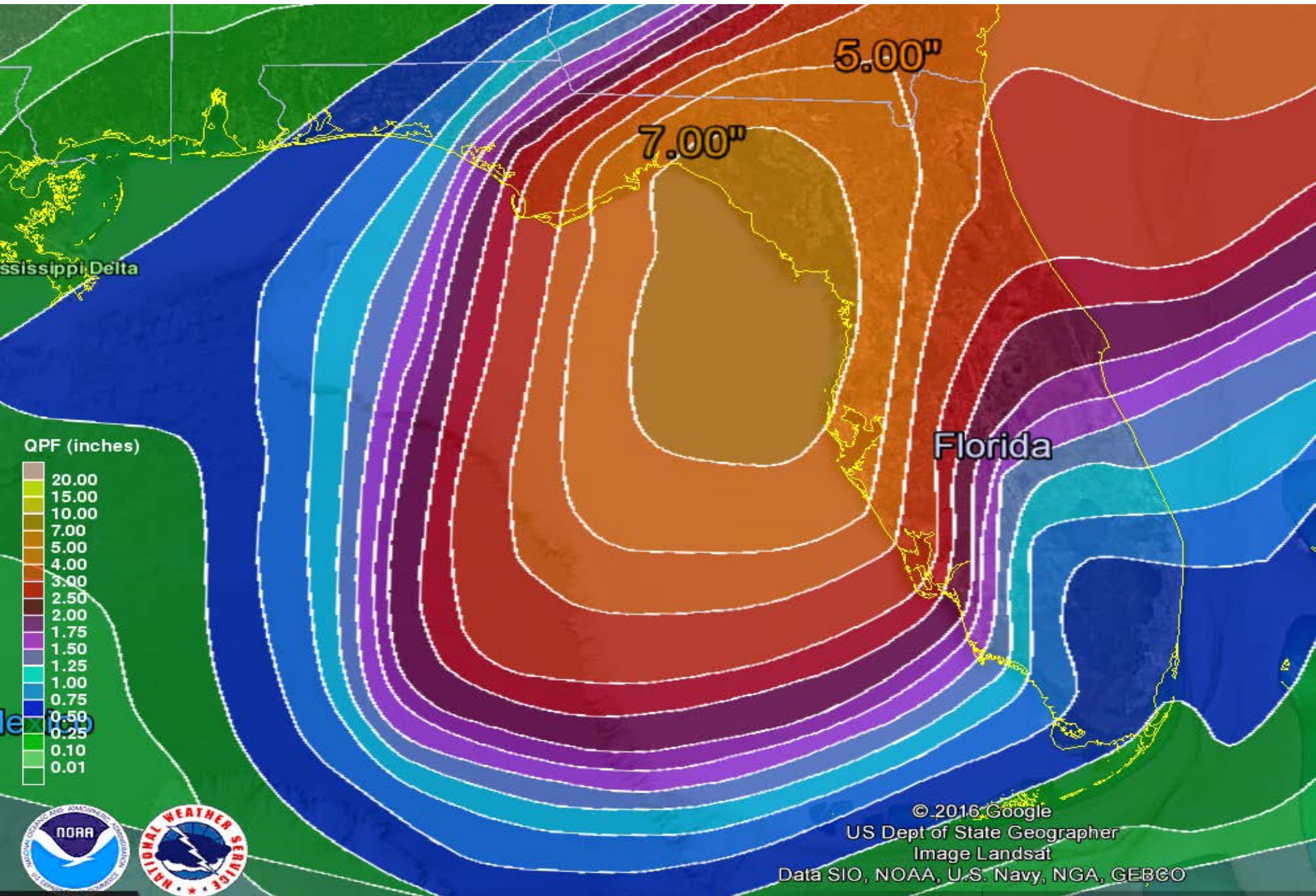


Tropical Depression 9
72-hour Day 1-3 Rainfall Forecast (inches)
Created 4:34 AM EDT Wed Aug 31 2016
Valid 8:00 AM EDT Wed Aug 31 2016
through 8:00 AM EDT Sat Sep 3 2016
NOAA/NWS/NCEP/WPC

Local point maximum rainfall may be higher than shown.
See the NHC public advisories for the latest tropical cyclone information.



Forecast Rainfall For Next 5 Days



Tropical Storm Wind Probabilities (34Kt):

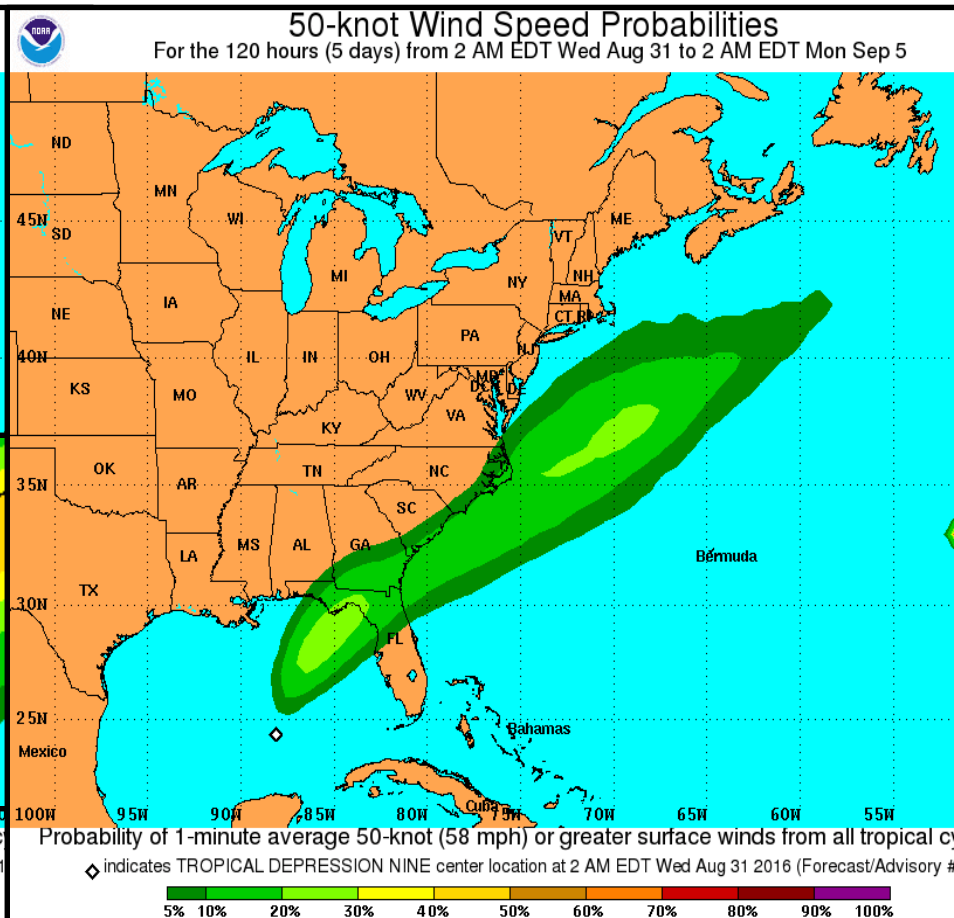
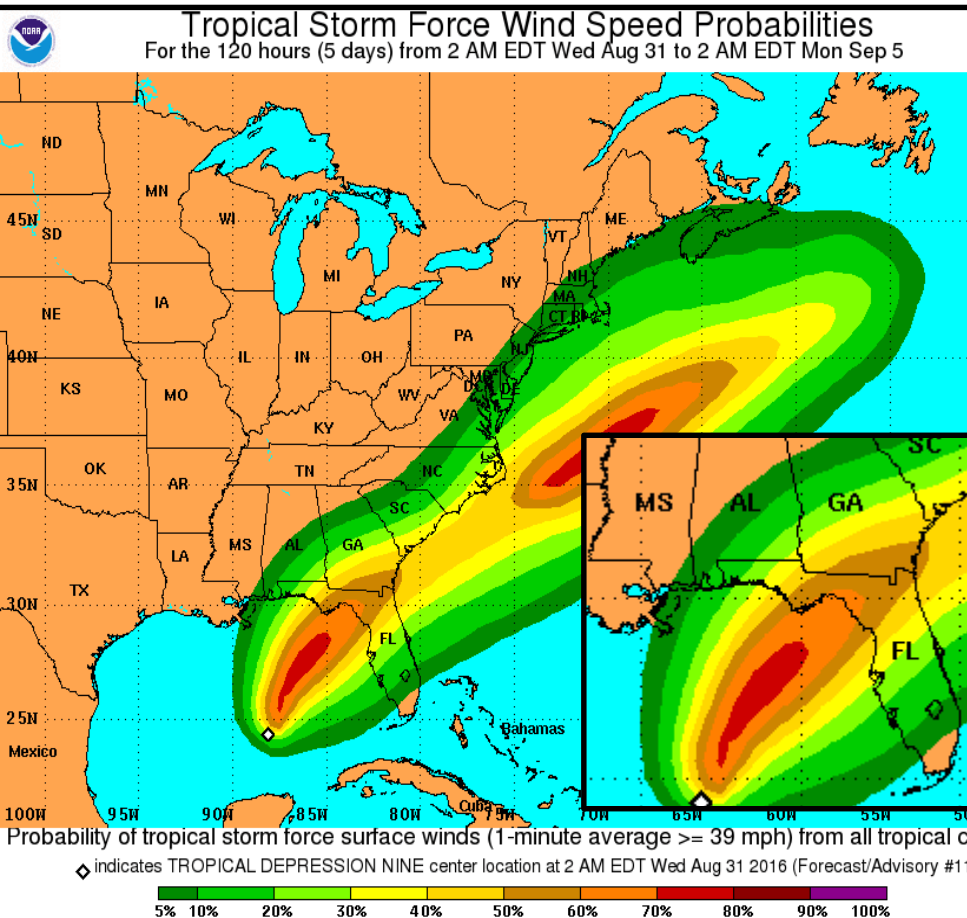
Panama City	49%
Apalachicola	61%
Tallahassee	55%
Cedar Key	56%
Tampa	33%
Ft. Myers	14%
Jacksonville	54%
Gainesville	52%

Tropical Storm Wind Probabilities (50Kt):

Panama City	15%
Apalachicola	22%
Tallahassee	19%
Cedar Key	15%
Tampa	5%
Ft. Myers	0%
Jacksonville	18%
Gainesville	15%

Hurricane Wind Probabilities (64Kt):

Panama City	3%
Apalachicola	5%
Tallahassee	4%
Cedar Key	3%
Tampa	0%
Ft. Myers	0%
Jacksonville	4%
Gainesville	2%

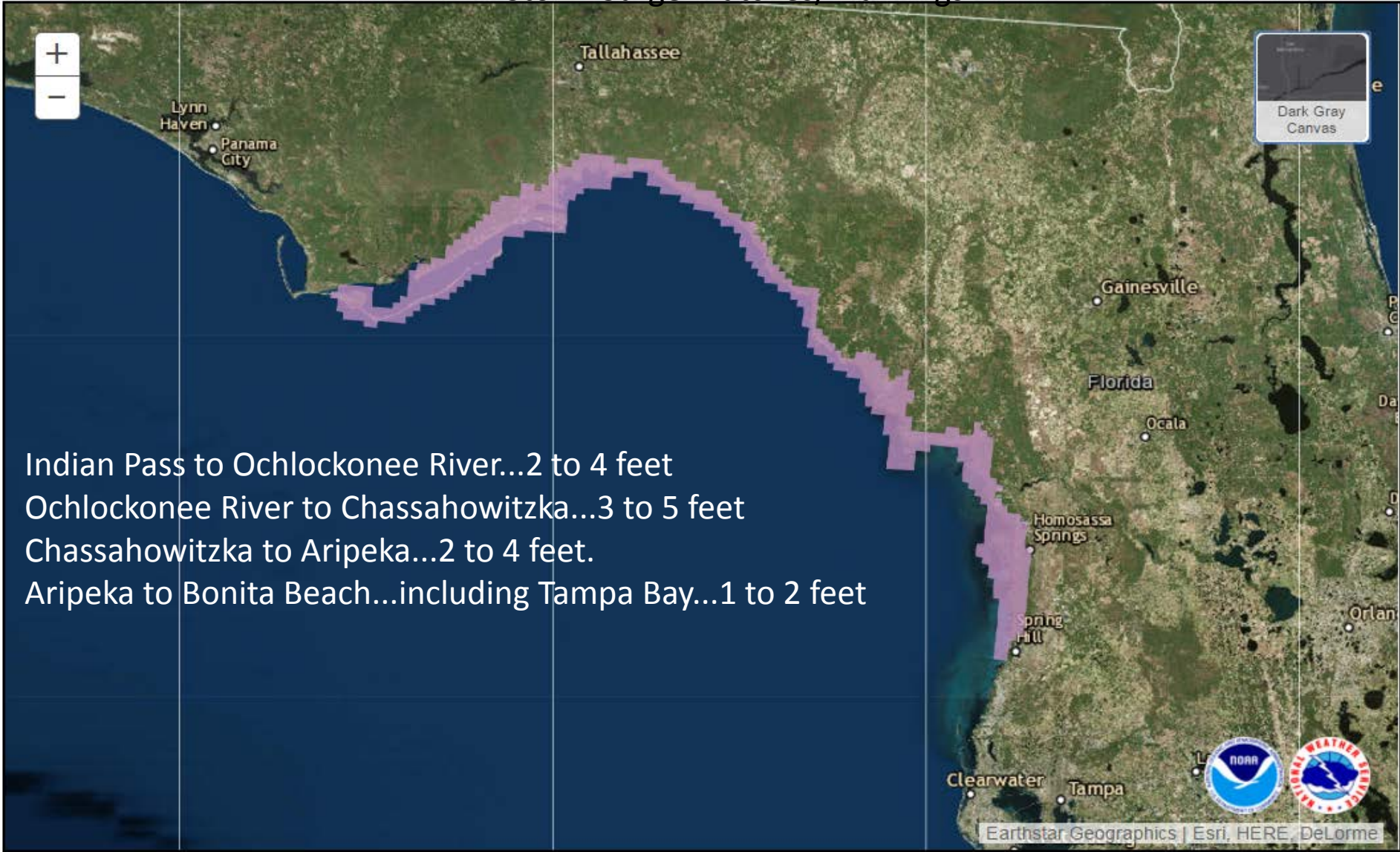


Prototype Storm Surge Watch/Warning Graphic*

Tropical Depression NINE
 Advisory 11 Issued: 4:00 AM CDT Wed Aug 31

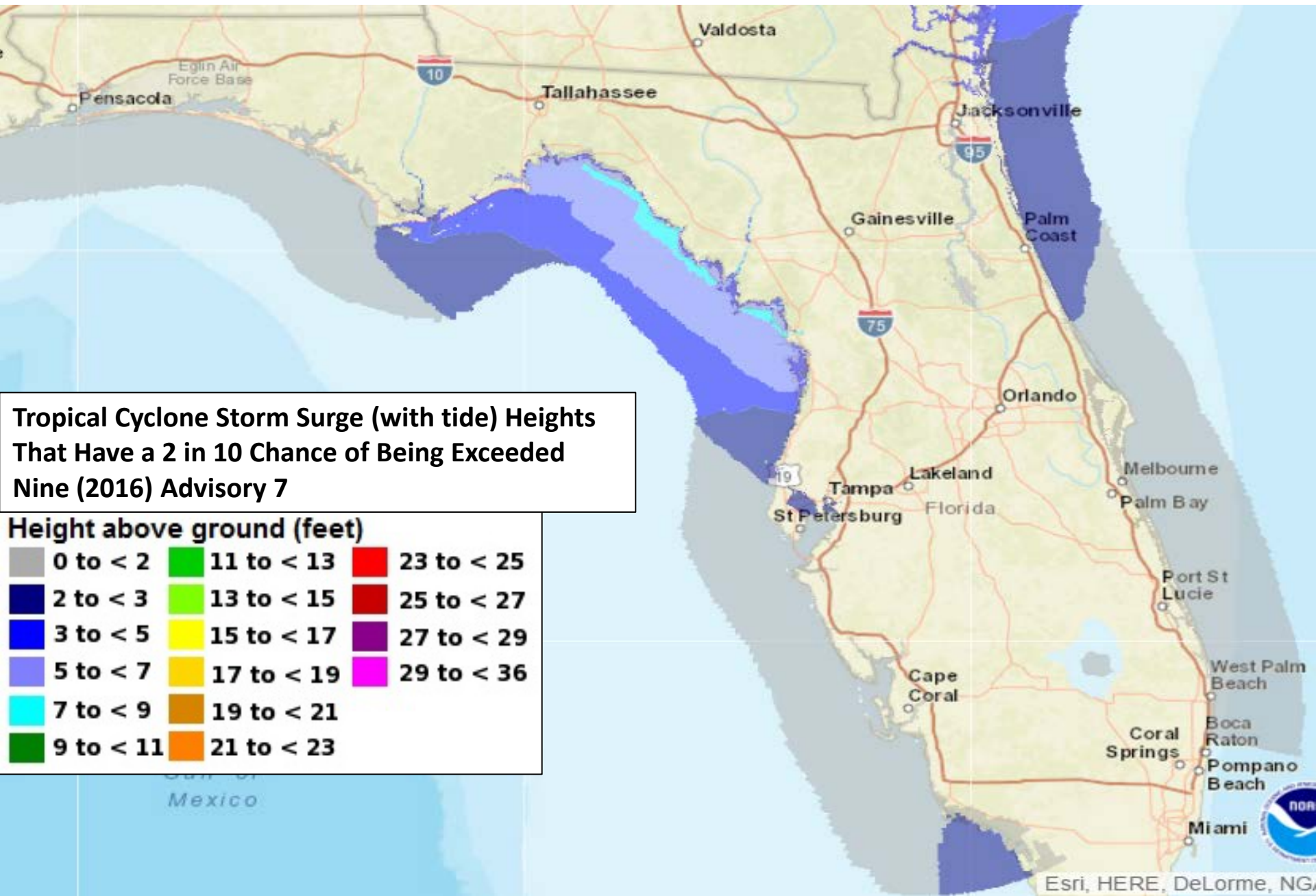


Storm Surge Watches/Warnings

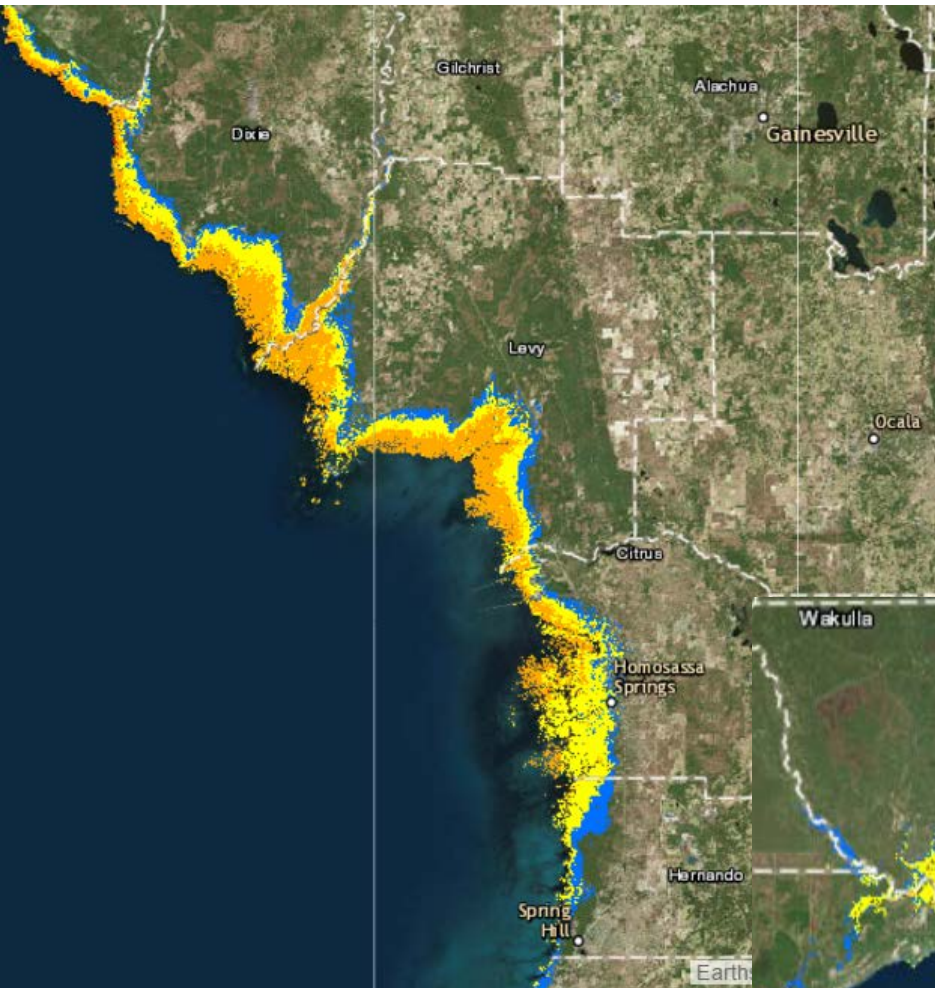


0 15 30mi

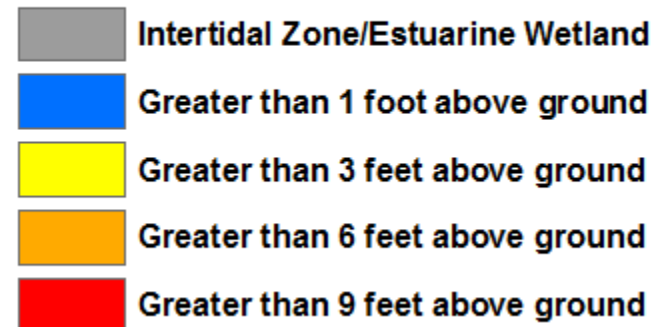
20% Storm Surge Exceedance



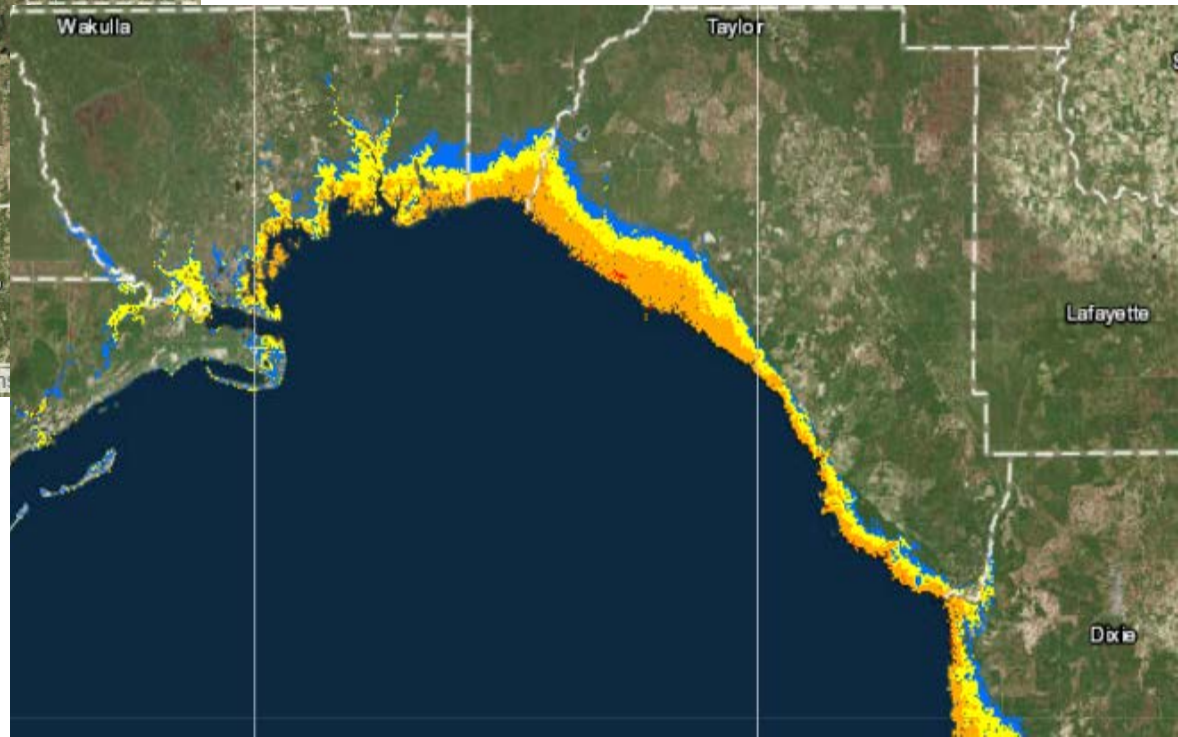
Potential Storm Surge



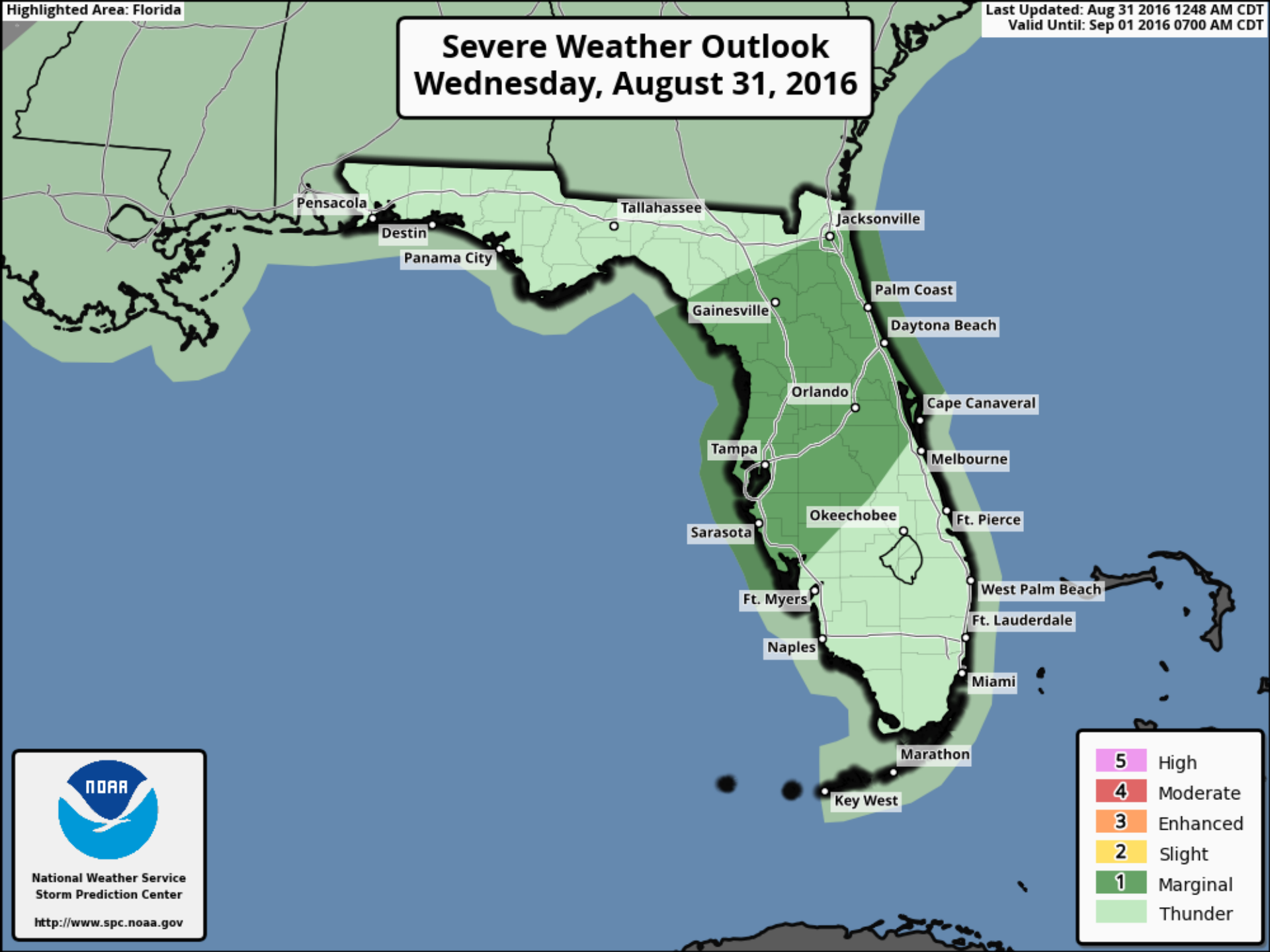
Potential Storm Surge Flooding*



*Displayed flooding values indicate the water height that has about a 1-in-10 (10%) chance of being exceeded.



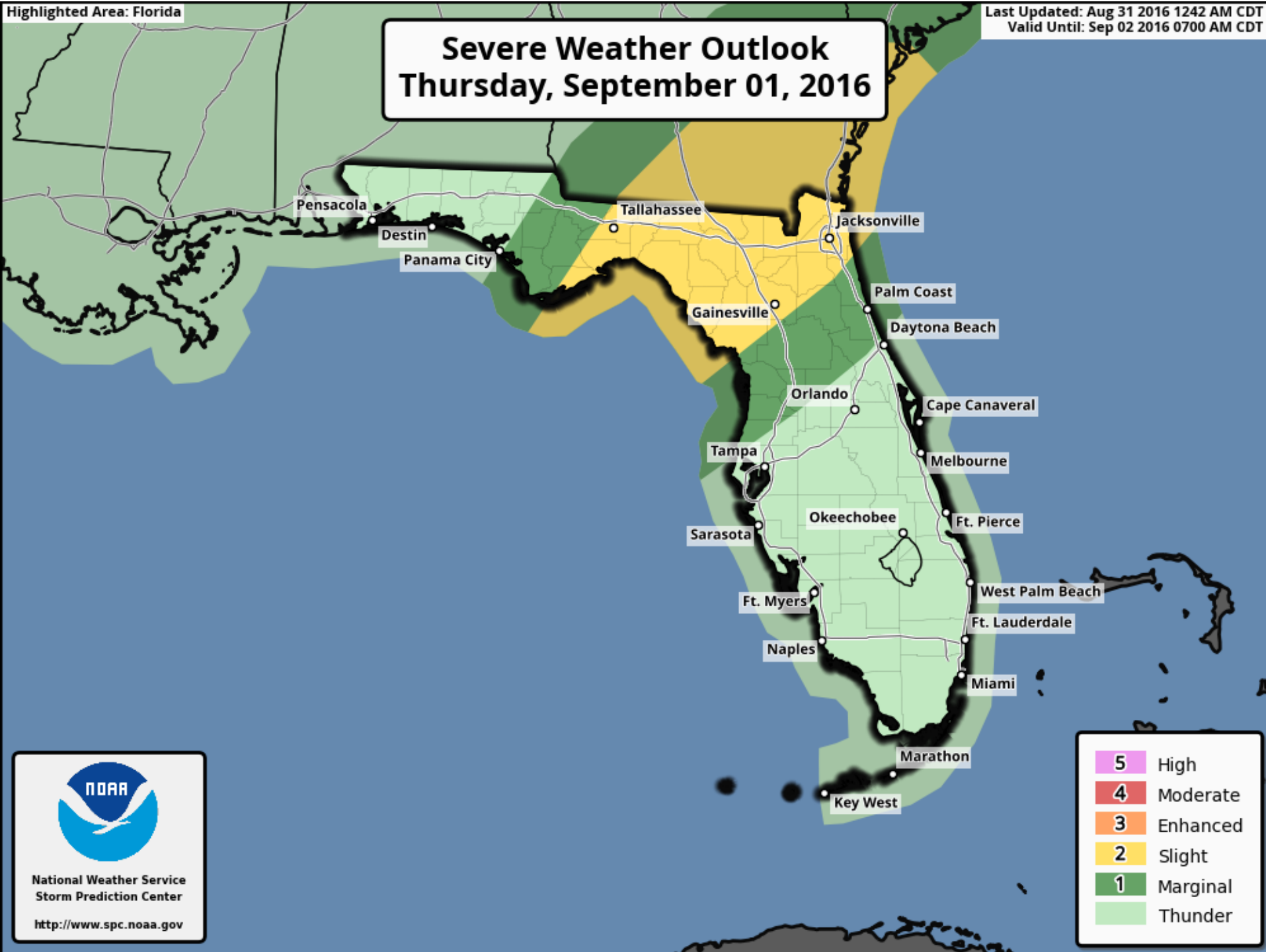
Severe Weather Outlook Wednesday, August 31, 2016



National Weather Service
Storm Prediction Center

<http://www.spc.noaa.gov>

Severe Weather Outlook Thursday, September 01, 2016



National Weather Service
Storm Prediction Center

<http://www.spc.noaa.gov>

5	High
4	Moderate
3	Enhanced
2	Slight
1	Marginal
	Thunder

Hurricane Gaston

5 AM EDT Wed Aug 31 2016

Position 33.4 N 50.2 W

Maximum Winds 120 mph

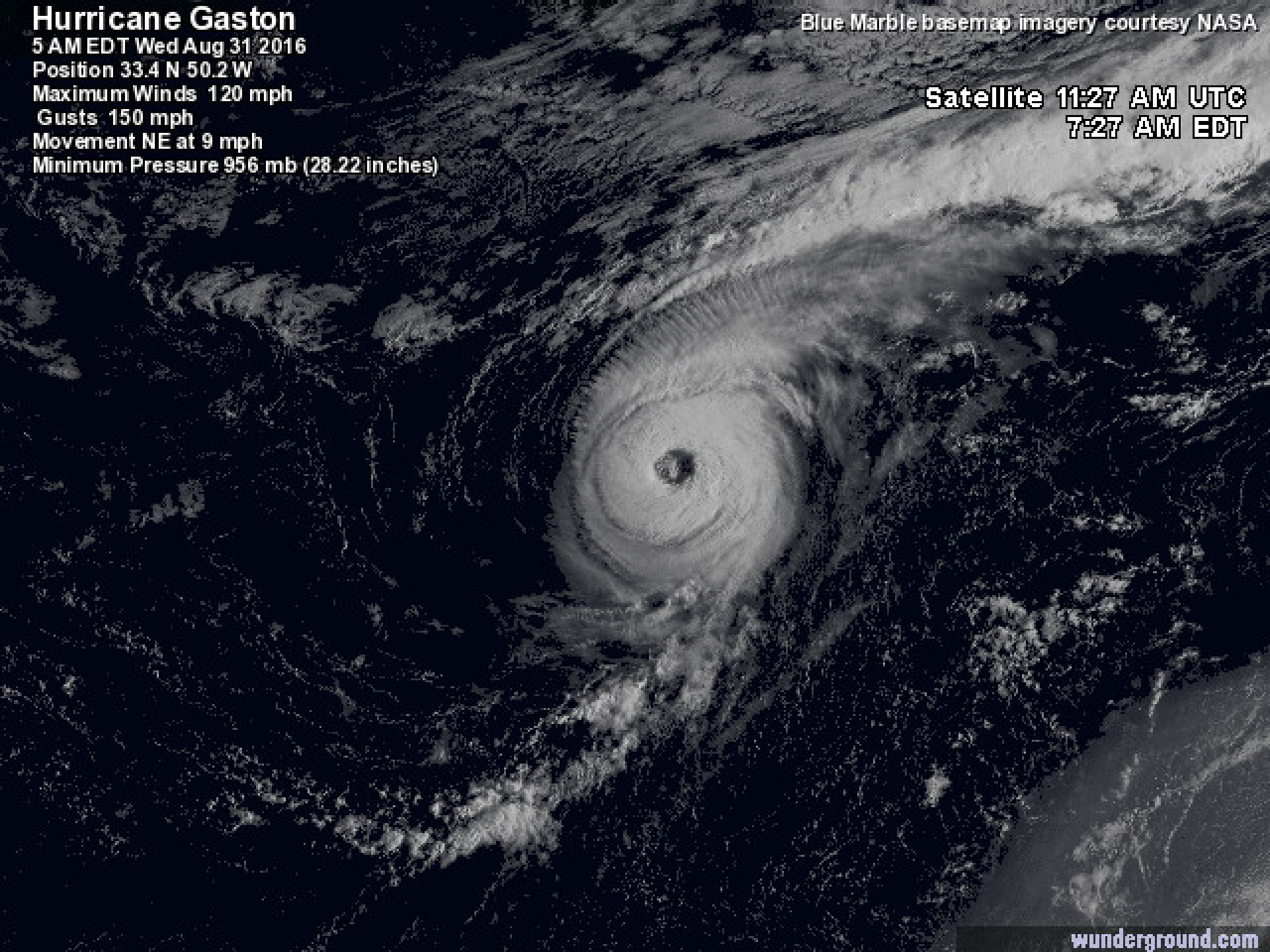
Gusts 150 mph

Movement NE at 9 mph

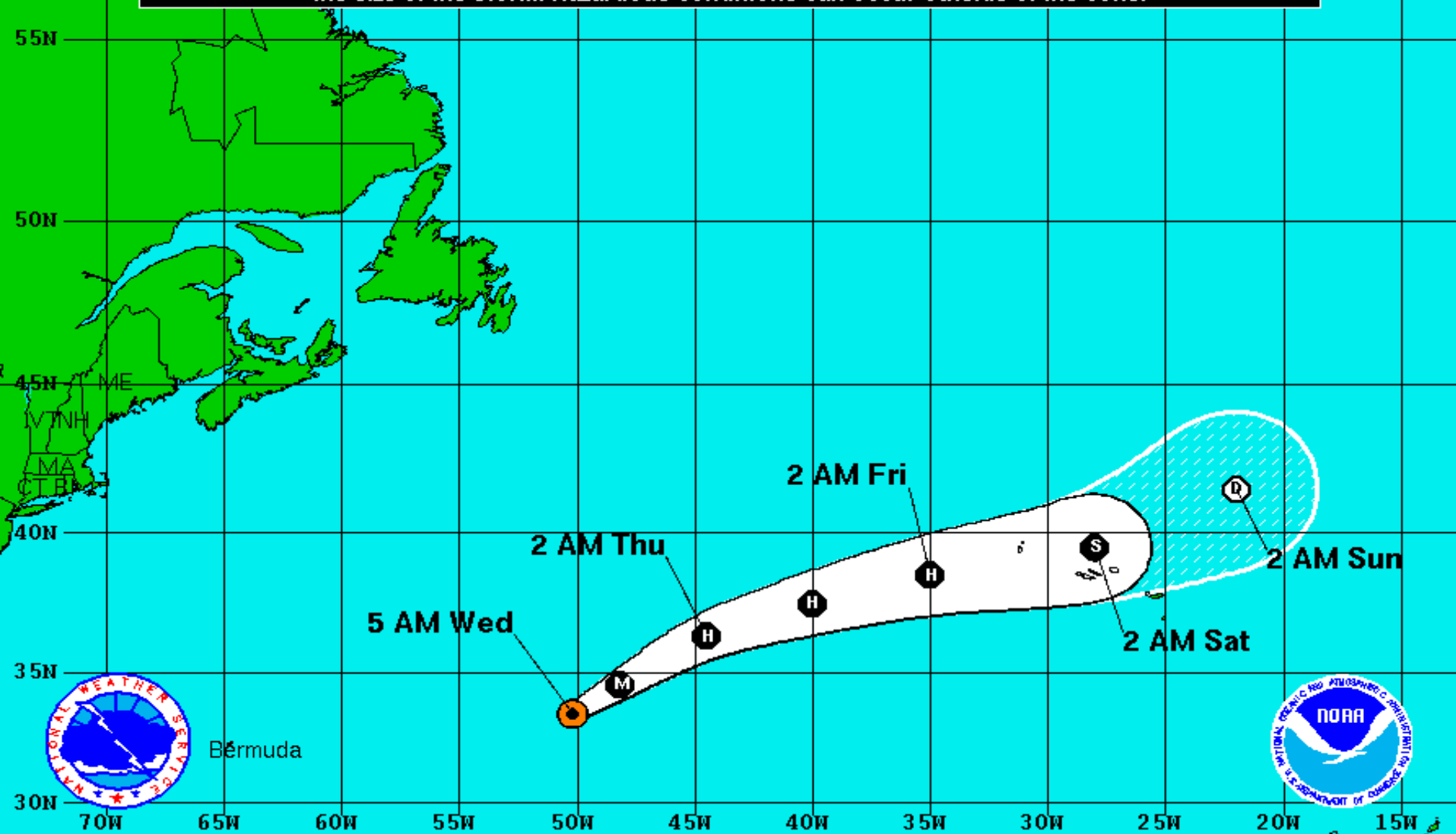
Minimum Pressure 956 mb (28.22 inches)

Blue Marble basemap imagery courtesy NASA


Satellite 11:27 AM UTC
7:27 AM EDT





Note: The cone contains the probable path of the storm center but does not show the size of the storm. Hazardous conditions can occur outside of the cone.



Hurricane Gaston
 Wednesday August 31, 2016
 5 AM EDT Advisory 35
 NWS National Hurricane Center

Current Information: 
 Center Location 33.4 N 50.2 W
 Max Sustained Wind 120 mph
 Movement NE at 9 mph

Forecast Positions:
 Tropical Cyclone  Post-Tropical
 Sustained Winds: D < 39 mph
 S 39-73 mph H 74-110 mph M > 110mph

Potential Track Area:
 Day 1-3  Day 4-5

Watches:
 Hurricane  Trop.Storm

Warnings:
 Hurricane  Trop.Storm

Tropical Depression Eight

5 AM EDT Wed Aug 31 2016

Position 34.8 N 74.3 W

Maximum Winds 35 mph

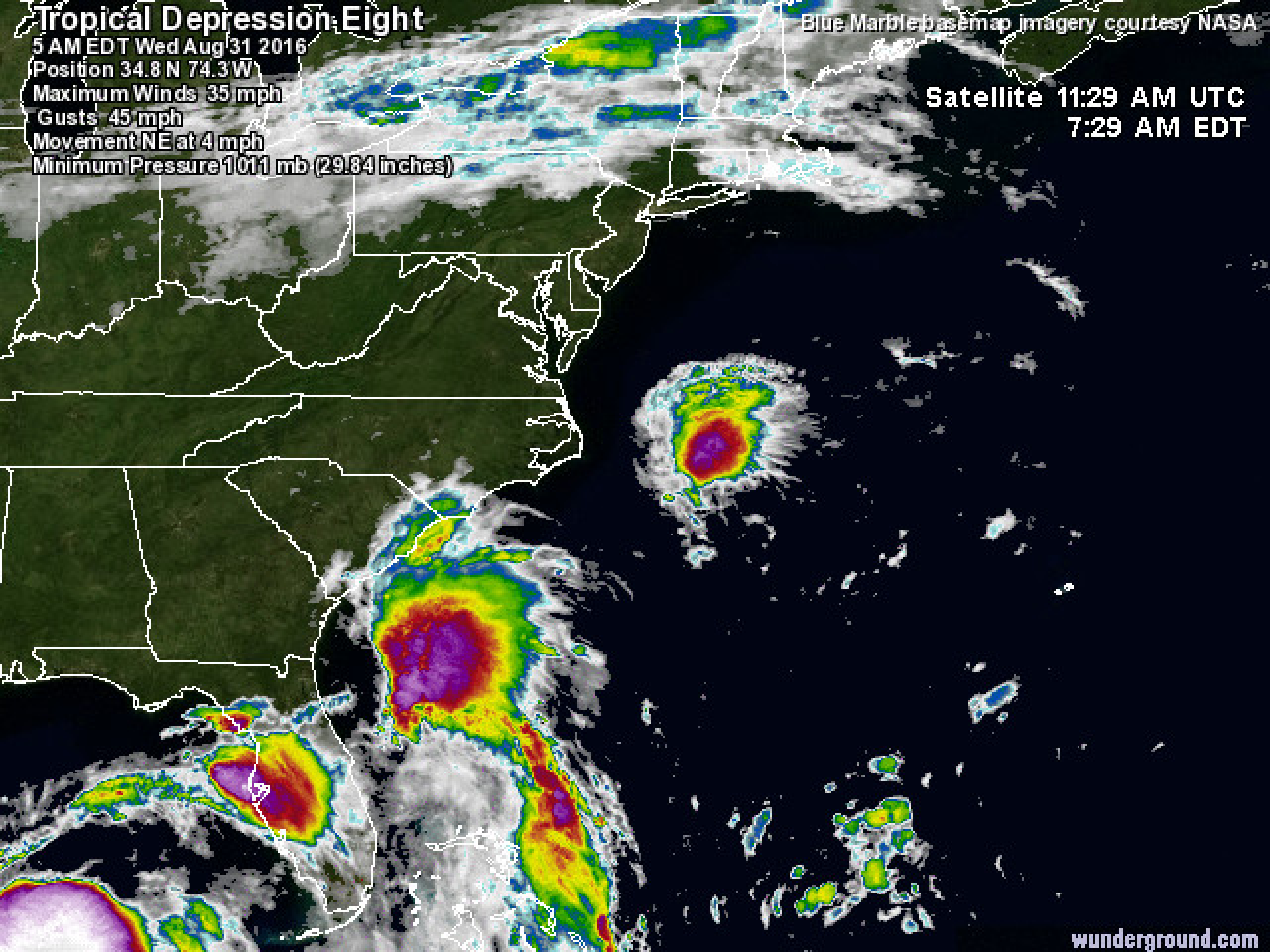
Gusts 45 mph

Movement NE at 4 mph

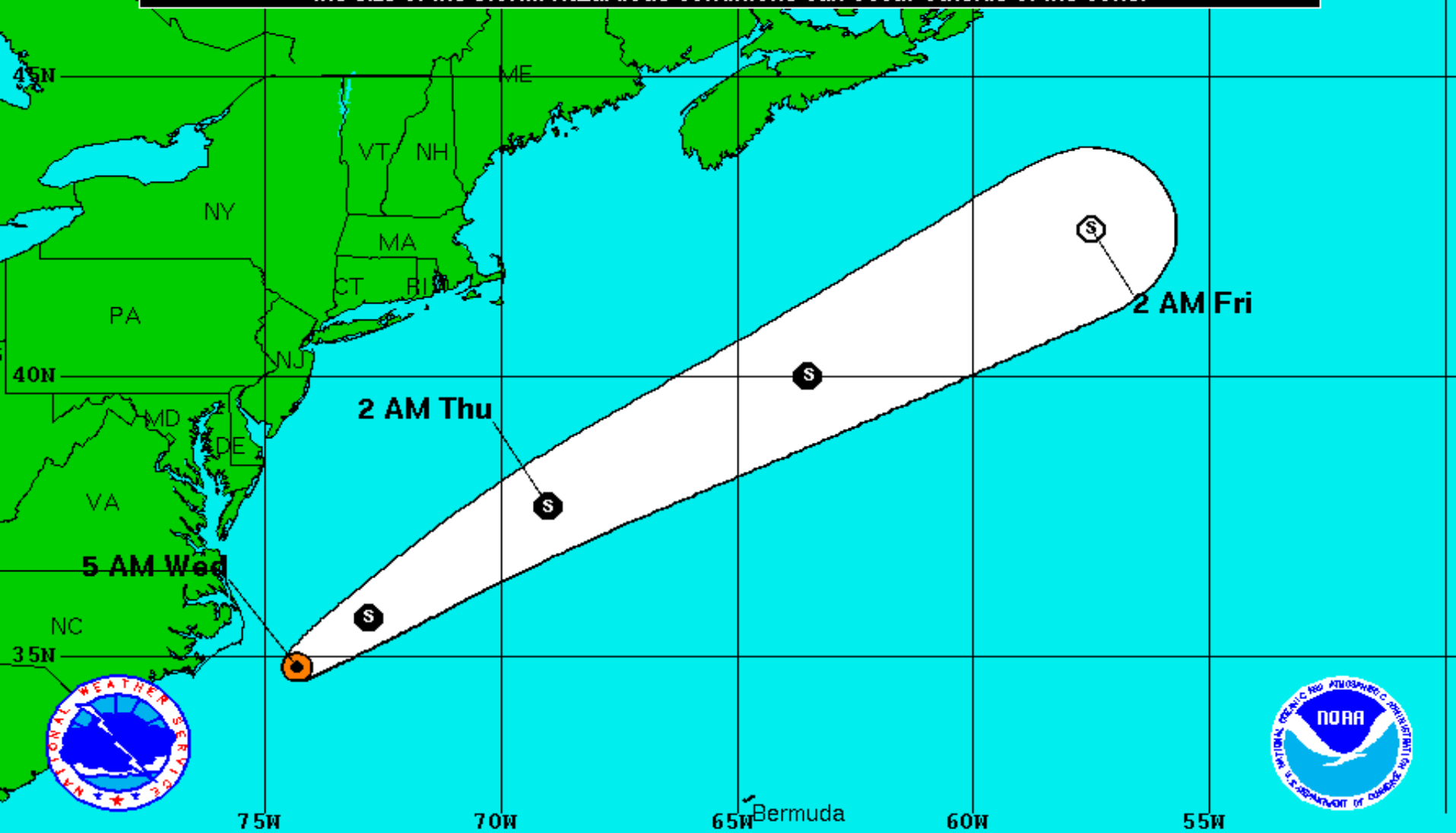
Minimum Pressure 1011 mb (29.84 inches)

Blue Marble basemap imagery courtesy NASA

Satellite 11:29 AM UTC
7:29 AM EDT



Note: The cone contains the probable path of the storm center but does not show the size of the storm. Hazardous conditions can occur outside of the cone.



Tropical Depression Eight

Wednesday August 31, 2016

5 AM EDT Advisory 12

NWS National Hurricane Center

Current Information:

Center Location 34.8 N 74.3 W

Max Sustained Wind 35 mph

Movement NE at 5 mph

Forecast Positions:

● Tropical Cyclone ○ Post-Tropical

Sustained Winds: D < 39 mph

S 39-73 mph H 74-110 mph M > 110mph

Potential Track Area:

Day 1-3 Day 4-5

Watches:

Hurricane Trop.Storm

Warnings:

Hurricane Trop.Storm



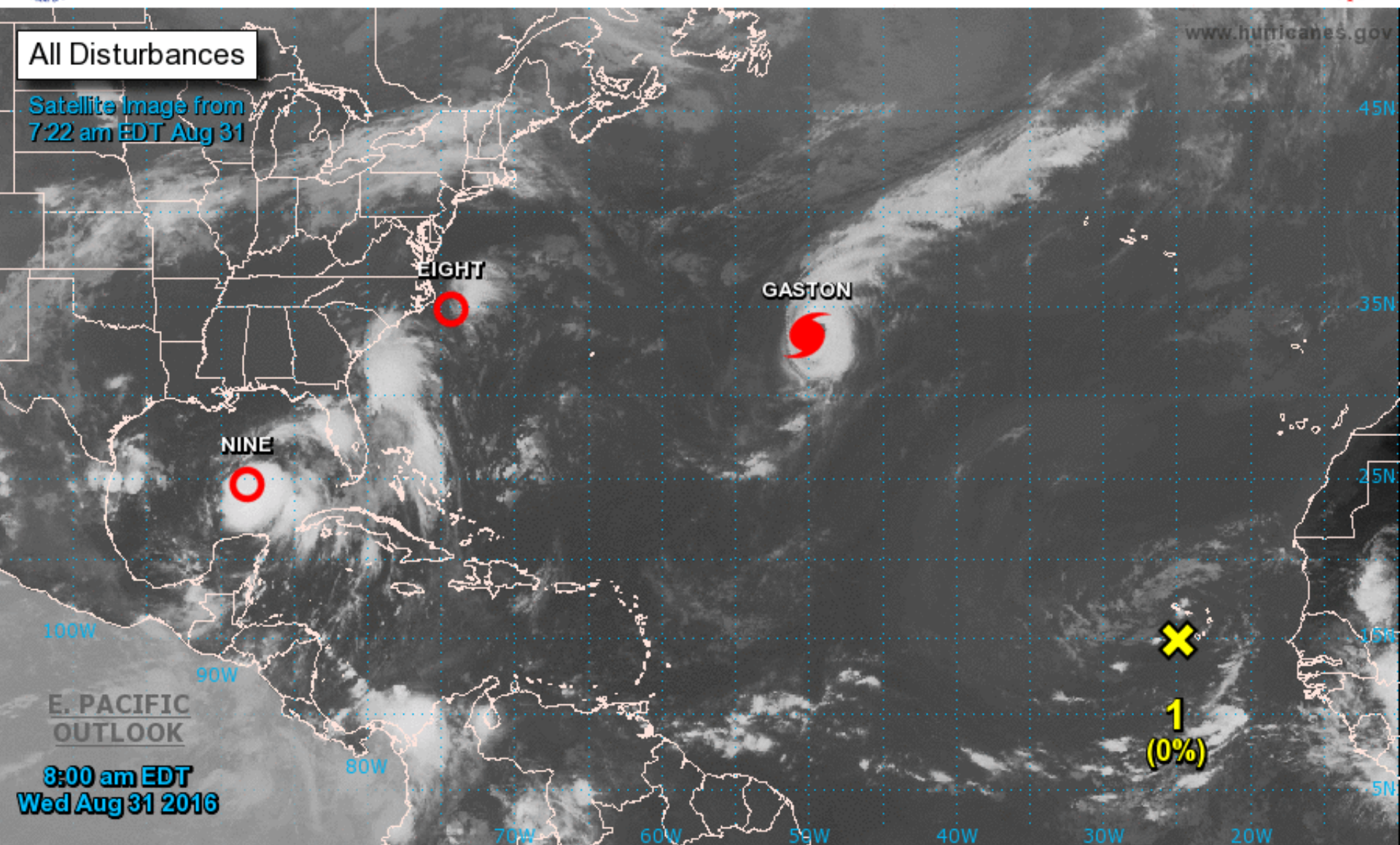
Two-Day Graphical Tropical Weather Outlook

National Hurricane Center Miami, Florida



All Disturbances

Satellite Image from
7:22 am EDT Aug 31



Current Disturbances and Two-Day Cyclone Formation Chance: < 40% 40-60% > 60%

Tropical or Sub-Tropical Cyclone: Depression Storm Hurricane

Post-Tropical Cyclone Remnants



Five-Day Graphical Tropical Weather Outlook

National Hurricane Center Miami, Florida



All Disturbances

Note: Shaded areas show where a tropical cyclone is likely to develop within the given time frame.

It DOES NOT show what the likely forecast track of a tropical cyclone will be once it forms!

A weak area of low pressure, associated with a tropical wave, is located over the far eastern Atlantic near the Cabo Verde Islands. Environmental conditions are expected to become a little more favorable for some gradual development of this system late this week while it moves westward at 15 to 20 mph over the tropical Atlantic.

* Formation chance through 48 hours...low...near 0 percent

* Formation chance through 5 days...medium...40 percent

10%

40%

8:00 am EDT
Wed Aug 31 2016

100°W 90°W 80°W 70°W 60°W 50°W 40°W 30°W 20°W

Tropical Cyclone Formation Potential for the Five-Day Period Ending at 8:00 am EDT Mon Sep 5 2016

Chance of Cyclone Formation in Five Days: ■ Low < 40% ■ Medium 40-60% ■ High > 60%

X indicates current disturbance location; shading indicates potential formation area.

Tropical Depression 9:

- The center of Tropical Depression 9 is located 400 miles south southwest of Apalachicola. The Depression is moving northwest near 2 mph.
- A north-northeastward motion at a faster forward speed is expected to begin later today, and a turn toward the northeast is forecast tonight. On the forecast track, the center of the tropical cyclone will approach the northwest Florida coast in the warning area on Thursday afternoon.
- Some strengthening is forecast during the next 48 hours, and the depression is expected to become a tropical storm tonight or early Wednesday. The next name on the Atlantic storm list is Hermine.
- Possible impacts may be felt from Tampa to Panama City. The main impacts would be flash flooding from heavy rain, coastal flooding from storm surge, damaging sustained tropical storm force or hurricane force winds, and isolated tornadoes.
- The heaviest precipitation will be on Wednesday and Thursday along the Gulf Coast from Naples north through Tampa and the Nature Coast.

Elsewhere:

- Hurricane Gaston has maximum sustained winds of 120 mph and is located 850 miles east of Bermuda.
- Gaston is moving toward the east-northeast near 9 mph, and this general motion with an increase in forward speed is expected during the next couple of days.
- Tropical Depression 8 is located 75 miles east southeast of Cape Hatteras, NC with maximum sustained winds at 35 mph.
- The depression is moving northeast near 5 mph, this general motion is expected to continue today. As the storm moves out to sea.

Florida Outlook:

- Tropical storm warning has been issued from the Anclote River to the Walton/Bay County line.
- Hurricane watch has been issued from Anclote River to Indian Pass.
- Tropical storm conditions are expected to first reach the coast within the warning area on Thursday afternoon. Hurricane conditions are possible over portions of the hurricane watch area beginning Thursday afternoon.
- The combination of a dangerous storm surge and the tide will cause normally dry areas near the coast to be flooded by rising waters moving inland from the shoreline. There is a possibility of life-threatening inundation within the next 48 hours along the Gulf coast of Florida from Aripeka to Indian Pass. Persons located within these areas should be prepared to take all necessary actions to protect life and property from rising water. Promptly follow any instructions from local officials.
- The water could reach the following heights above ground if the peak surge occurs at the time of high tide... Indian Pass to Ochlockonee River with 2 to 4 feet...Ochlockonee River to Chassahowitzka with 3 to 5 feet...Chassahowitzka to Aripeka with 2 to 4 feet...Aripeka to Bonita Beach, including Tampa Bay, with 1 to 2 feet.
- Storm total rainfall amounts of 5 to 10 inches are possible over portions of central and northern Florida through Friday, with isolated maximum amounts of 15 inches possible. These rains may cause flooding and flash flooding.
- Strong life threatening rip currents are likely along all east coast beaches for the next few days. Rip currents will likely spread to the Gulf Coast as the storm approaches and ocean swells increase.
- Isolated tornadoes are possible late tonight into Thursday morning mainly across central Florida. A few tornadoes are possible Thursday afternoon into Thursday night over north Florida.
- Impacts will likely begin affecting Florida tonight and last through Friday.
- Hurricane Gaston and Tropical Depression 8 do not pose a threat to Florida.

Another briefing packet will be issued on Wednesday afternoon. For more information on this system, please visit the NHC website at www.nhc.noaa.gov



TROPICAL UPDATE

Created by:

Kevin Rodriguez, Deputy State Meteorologist

Kevin.Rodriguez@em.myflorida.com

State Meteorological Support Unit

Florida Division of Emergency
Management