



TROPICAL UPDATE

9 AM EDT

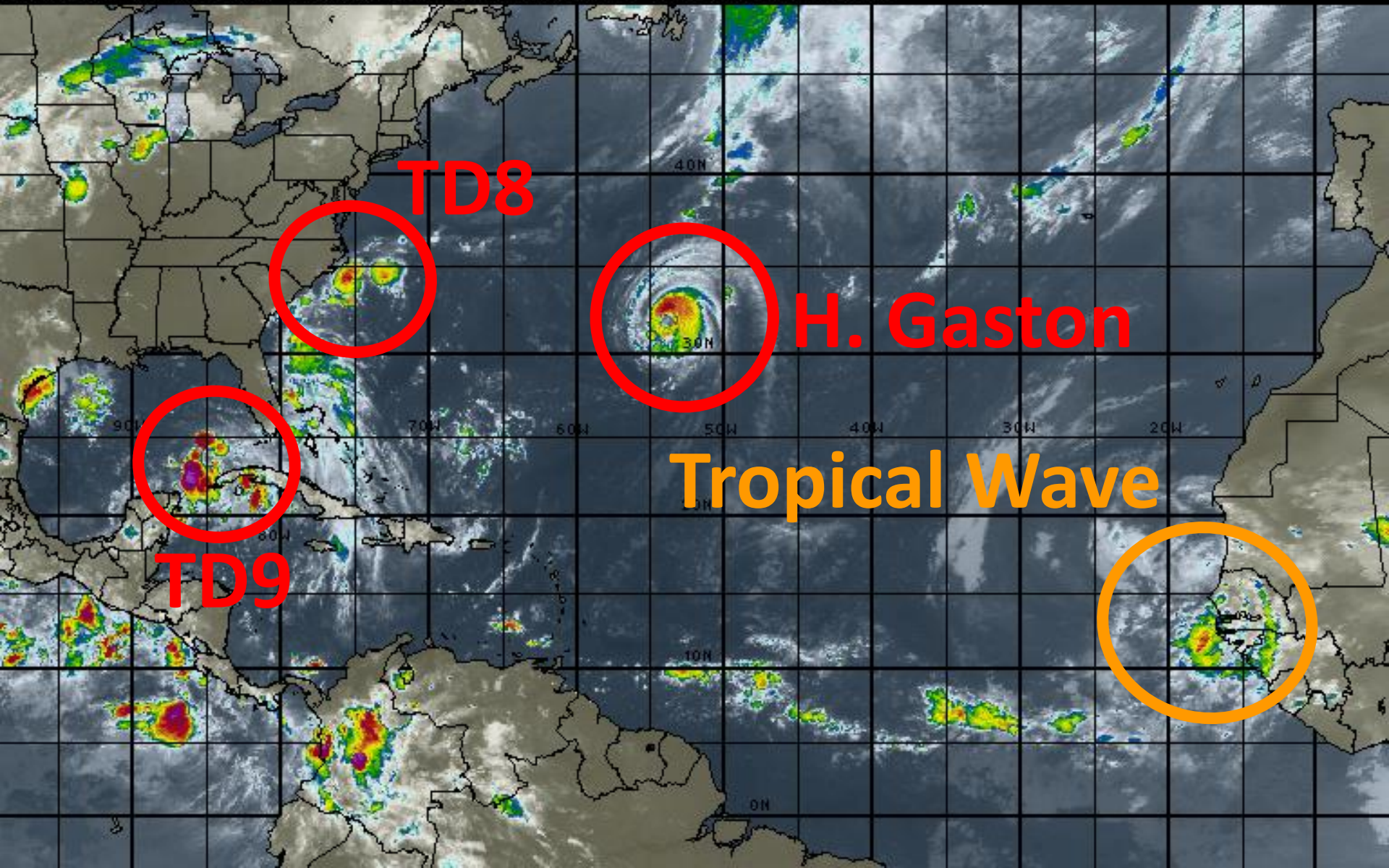
Tuesday, August 30, 2016

**Hurricane Gaston, Tropical Depression 8
and Tropical Depression 9**

This update is intended for government and emergency response officials, and is provided for informational and situational awareness purposes only. Forecast conditions are subject to change based on a variety of environmental factors. For additional information, or for any life safety concerns with an active weather event please contact your County Emergency Management or Public Safety Office, local National Weather Service forecast office or visit the National Hurricane Center website at www.nhc.noaa.gov.

Atlantic Basin Satellite Image

09:00 30-AUG-2016 GMT ©Copyright MSI Corporation <http://www.usi.com>



Tropical Depression Nine

4 AM CDT Tue Aug 30 2016

Position 23.8 N 86.6 W

Maximum Winds 35 mph

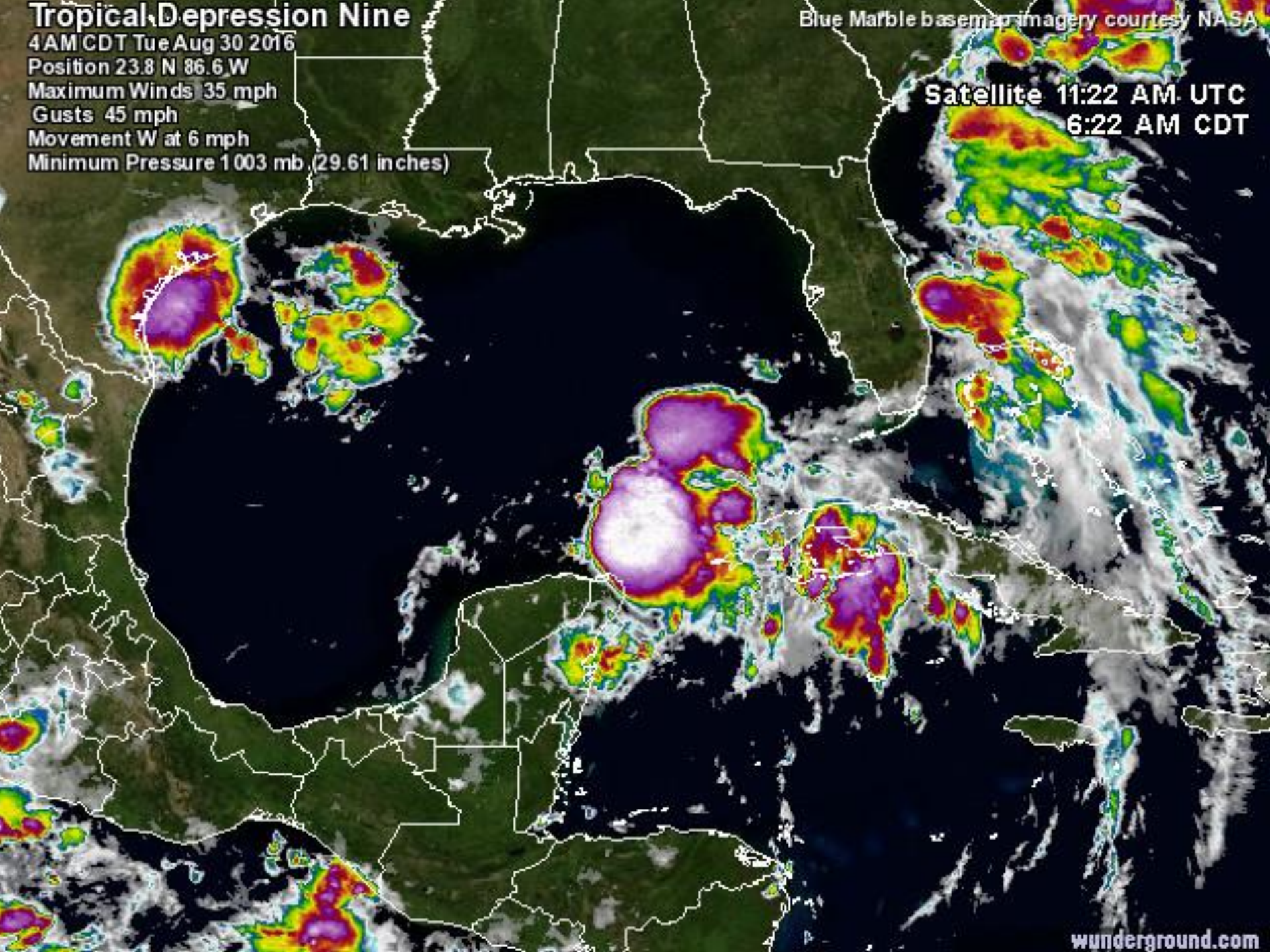
Gusts 45 mph

Movement W at 6 mph

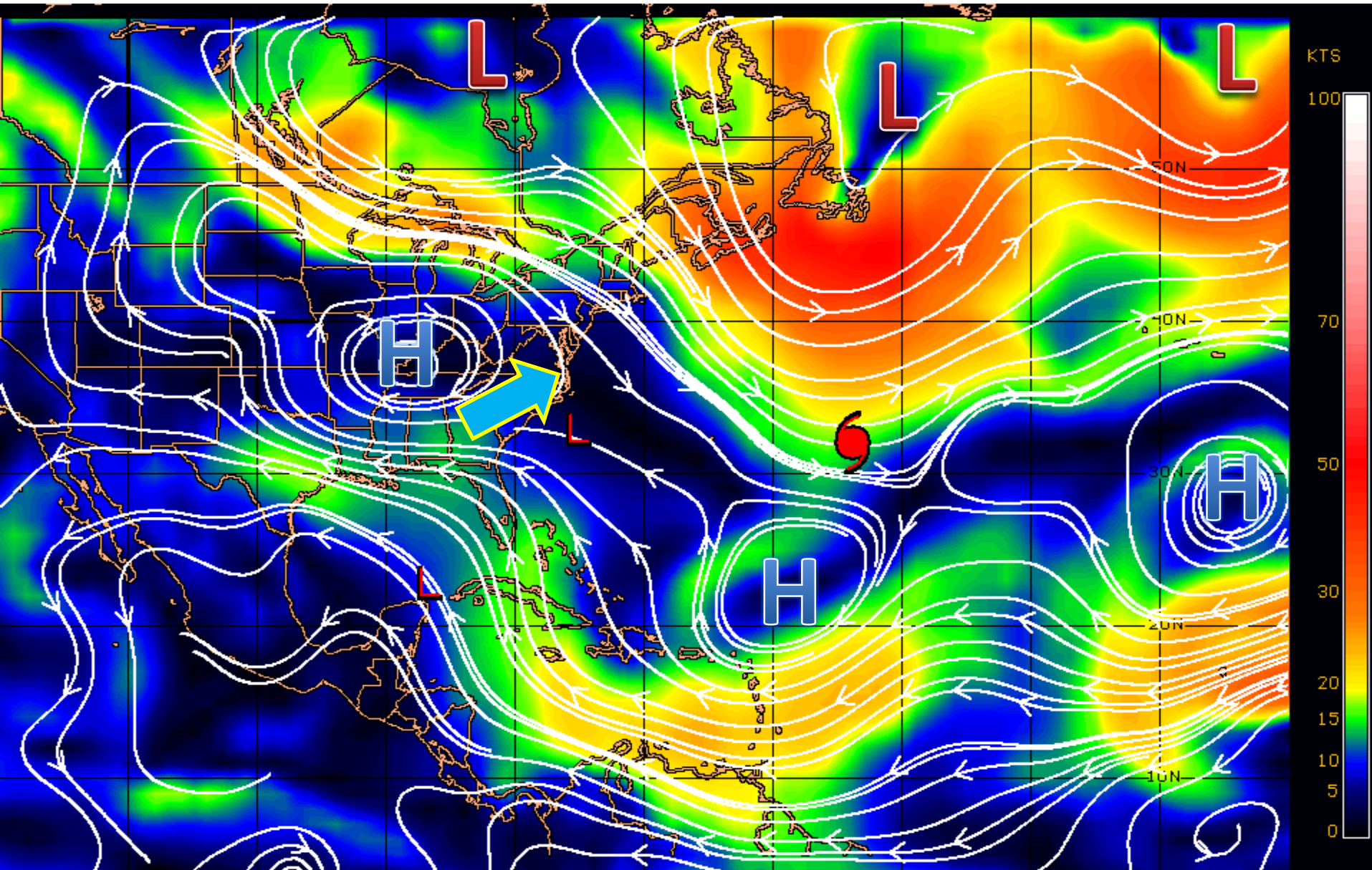
Minimum Pressure 1 003 mb (29.61 inches)

Blue Marble basemap imagery courtesy NASA

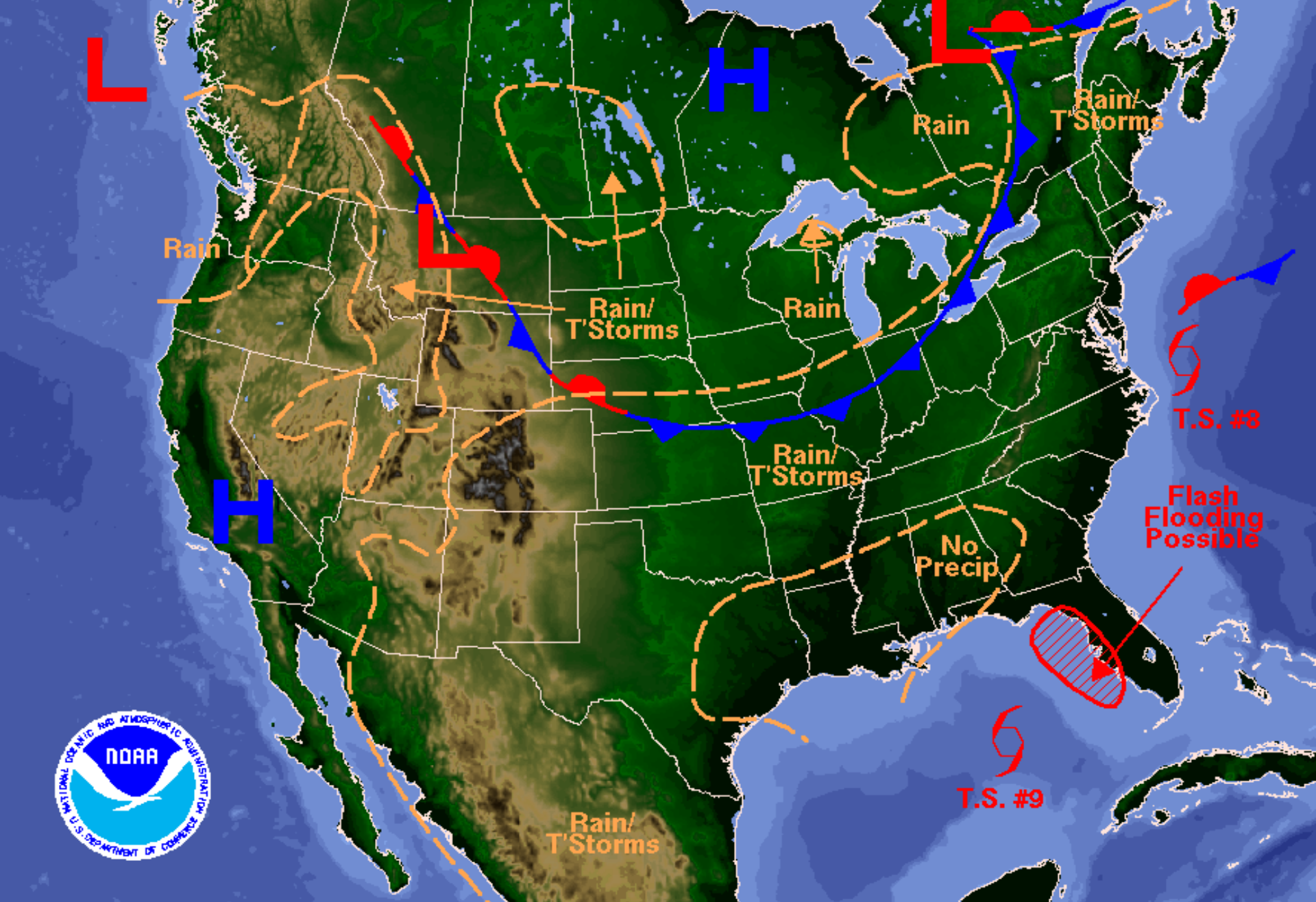
Satellite 11:22 AM UTC
6:22 AM CDT



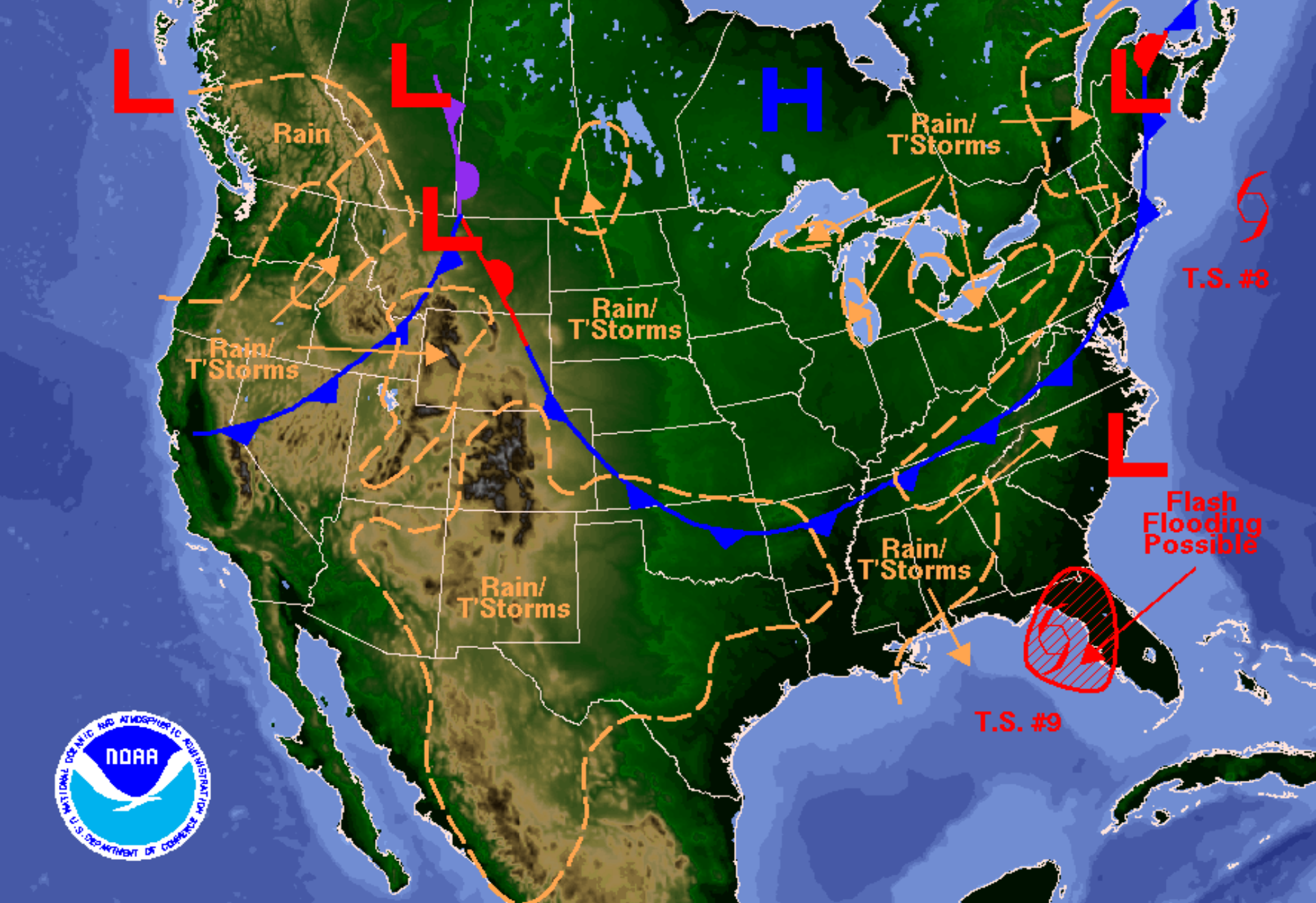
Steering Currents



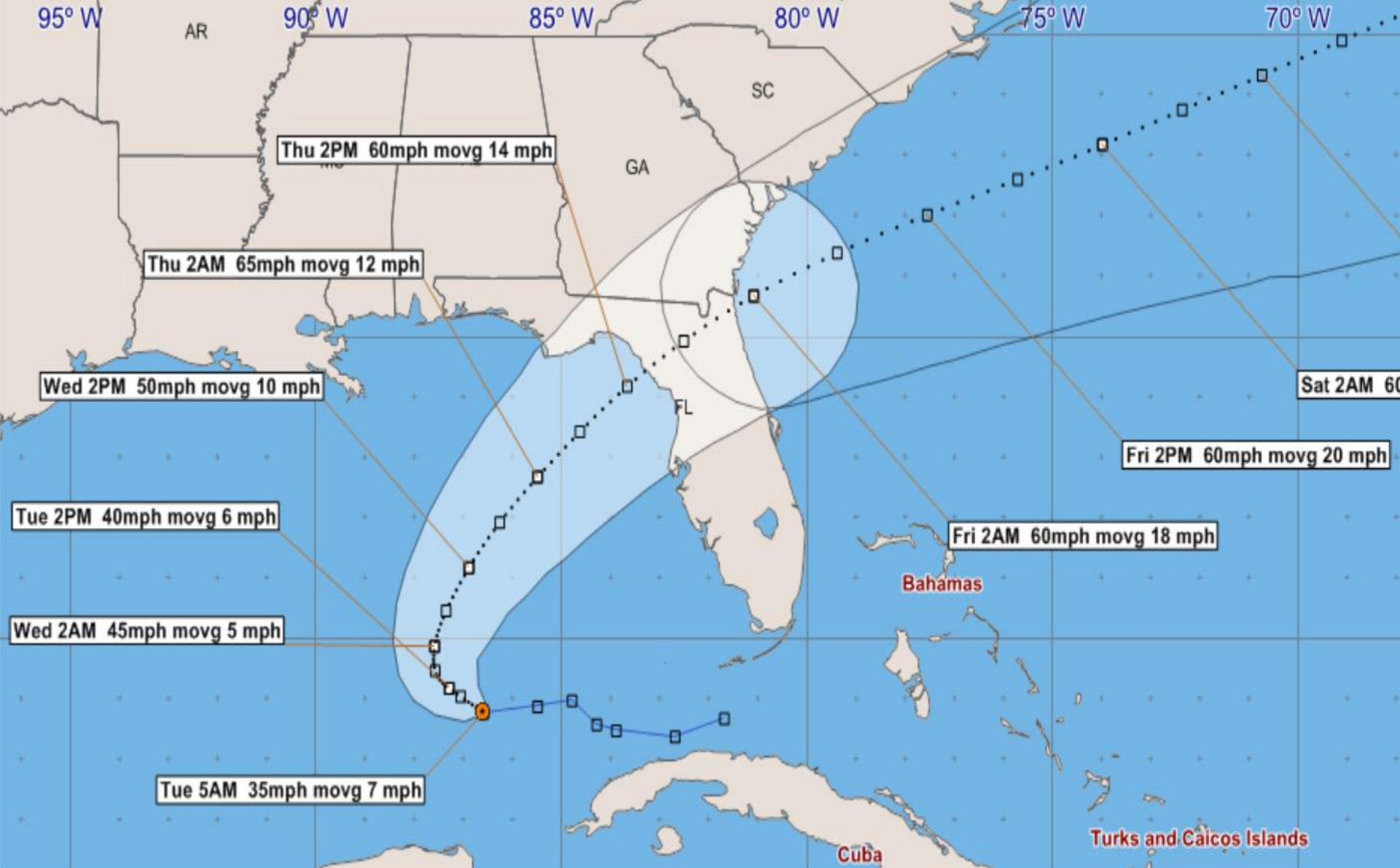
99L is likely to continue drifting west today before moving north as the area of high pressure over the eastern U.S. will weaken and shift to the northeast and a frontal system moves toward the eastern seaboard.



Weather Forecast for Wed, Aug 31, 2016, issued 4:51 AM EDT Tue, Aug 30, 2016
DOC/NOAA/NWS/NCEP/Weather Prediction Center
Prepared by McCreynolds based on WPC, SPC and NHC forecasts



Weather Forecast for Thu, Sep 01, 2016, issued 4:55 AM EDT Tue, Aug 30, 2016
DOC/NOAA/NWS/NCEP/Weather Prediction Center
Prepared by McCreynolds based on WPC, SPC and NHC forecasts



Tropical Depression Nine - Tuesday, August 30, 2016 5 AM EDT Advisory #7

Center Location: 23.8 N 86.6 W Maximum Sustained Winds: 35 mph Movement: 7 mph W

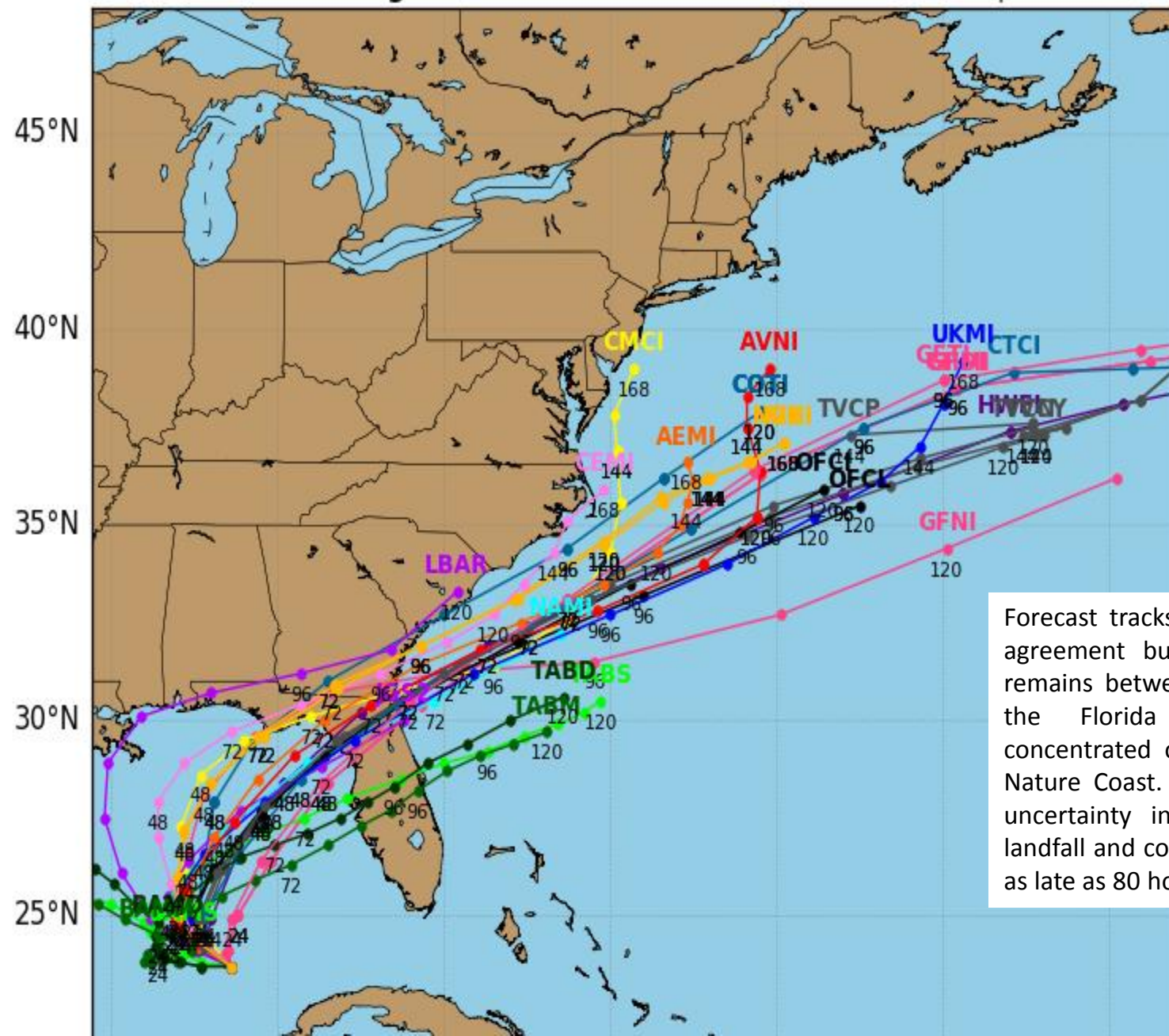
□ forecast positions Potential Track Area: day 1-3 day 4-5 Surface Wind Field: at current location

Sustained Wind Speeds: tropical storm $\geq 34\text{kt}/39\text{mph}$ strong tropical storm $\geq 50\text{kt}/58\text{mph}$ hurricane $\geq 64\text{kt}/74\text{mph}$

Tropical Depression 09L Model Track Guidance

Initialized at 06z Aug 30 2016

Levi Cowan - tropicaltidbits.com



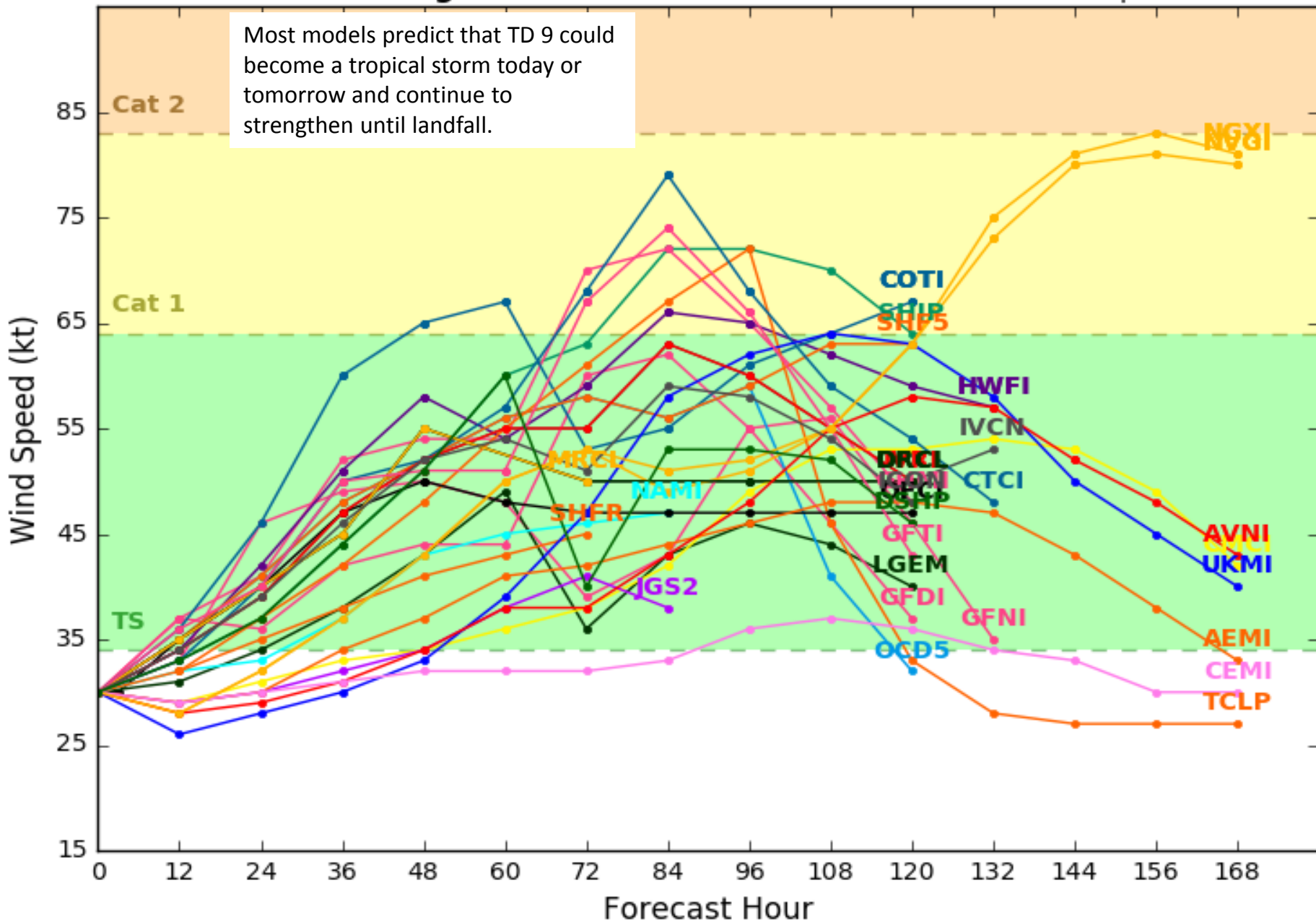
Forecast tracks continue to get into better agreement but the range of possibilities remains between the Tampa Bay area and the Florida Panhandle, with most concentrated on the Florida Big Bend and Nature Coast. However, there is still great uncertainty in regards to the timing of landfall and could be as early as 54 hours or as late as 80 hours.

Tropical Depression 09L Model Intensity Guidance

Initialized at 06z Aug 30 2016

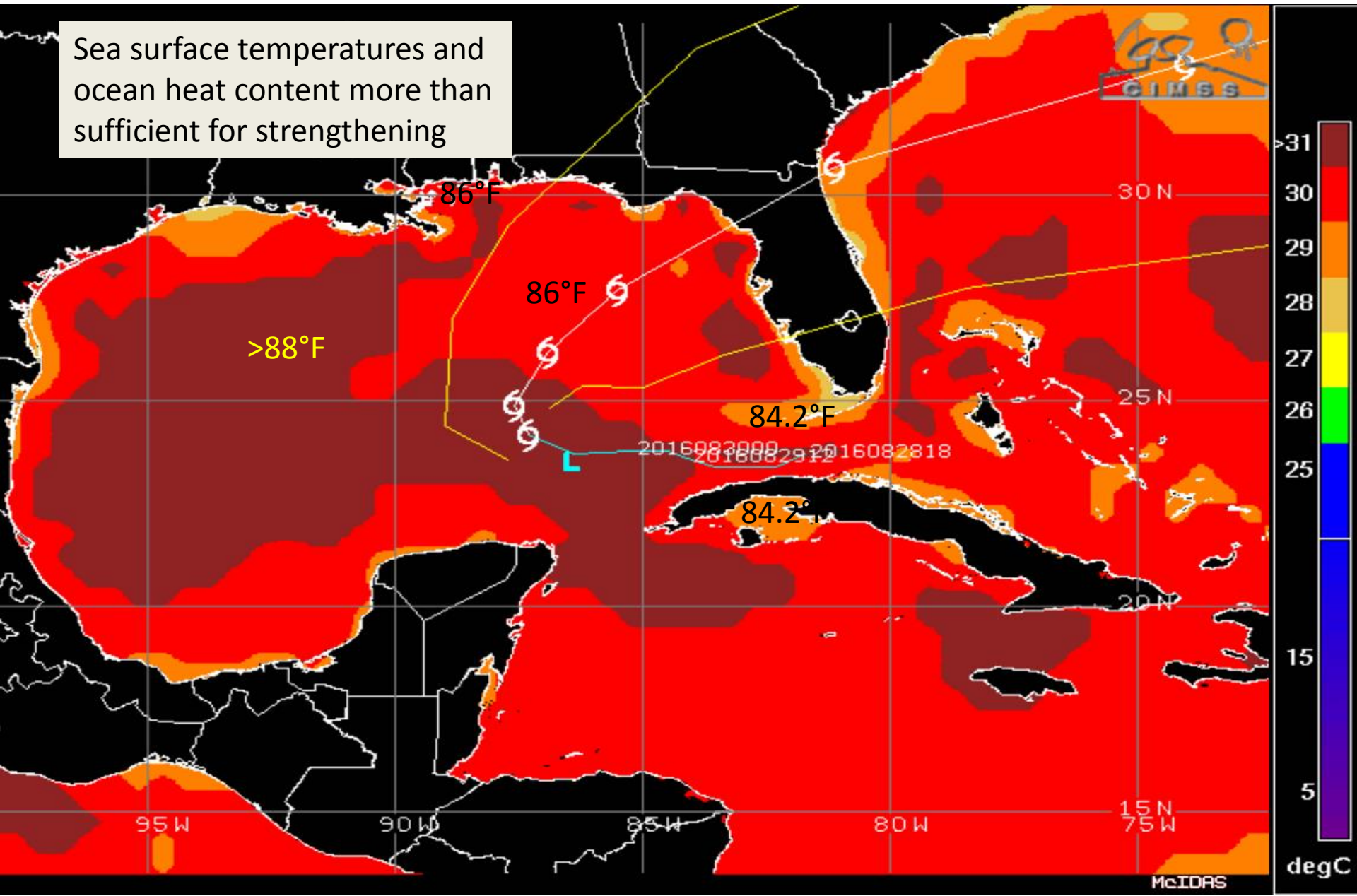
Levi Cowan - tropicaltidbits.com

Most models predict that TD 9 could become a tropical storm today or tomorrow and continue to strengthen until landfall.

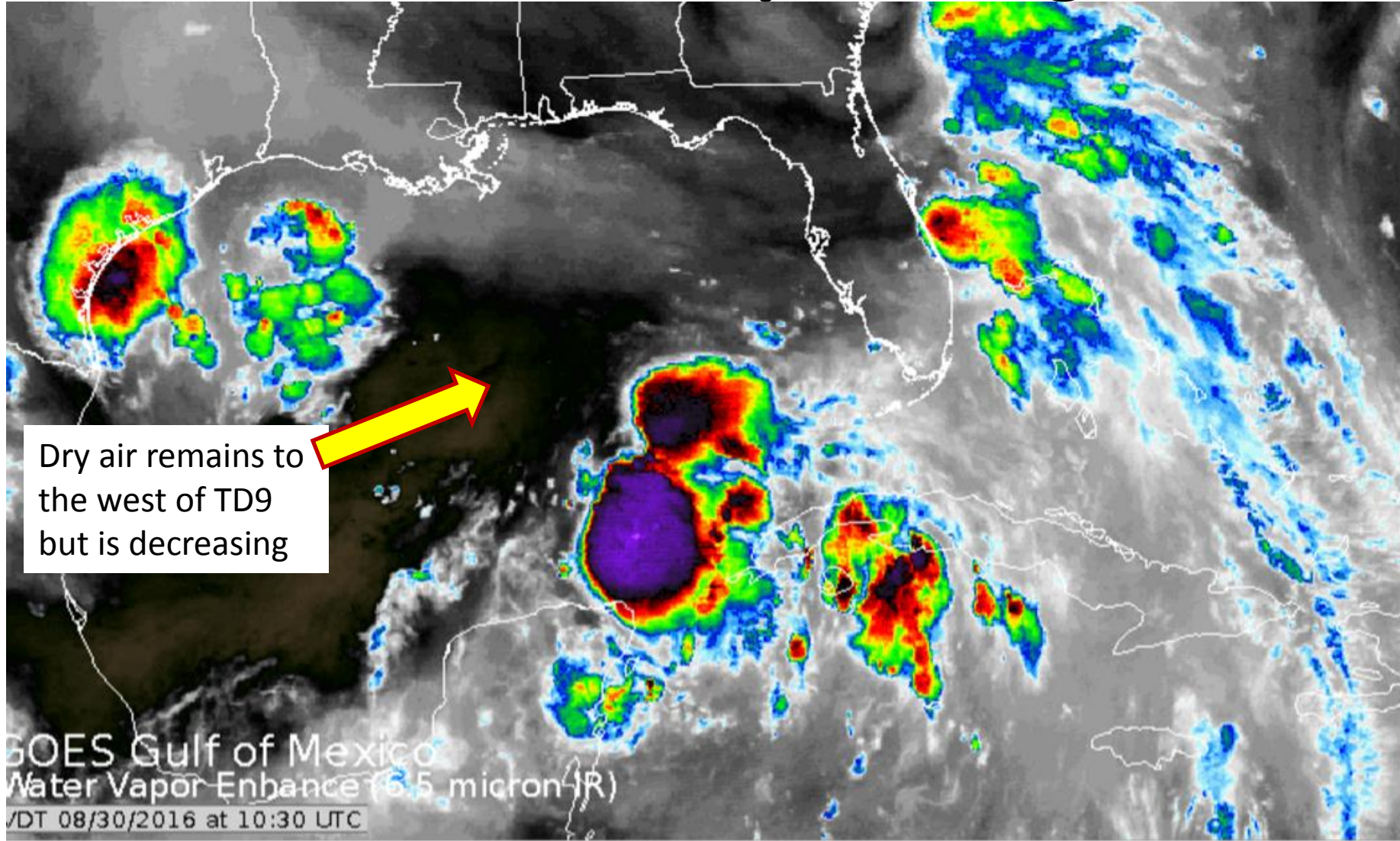


Sea Surface Temperatures Near 99L

Sea surface temperatures and ocean heat content more than sufficient for strengthening

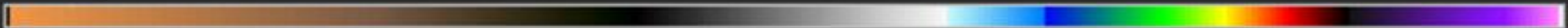


TD9 Water Vapor Image

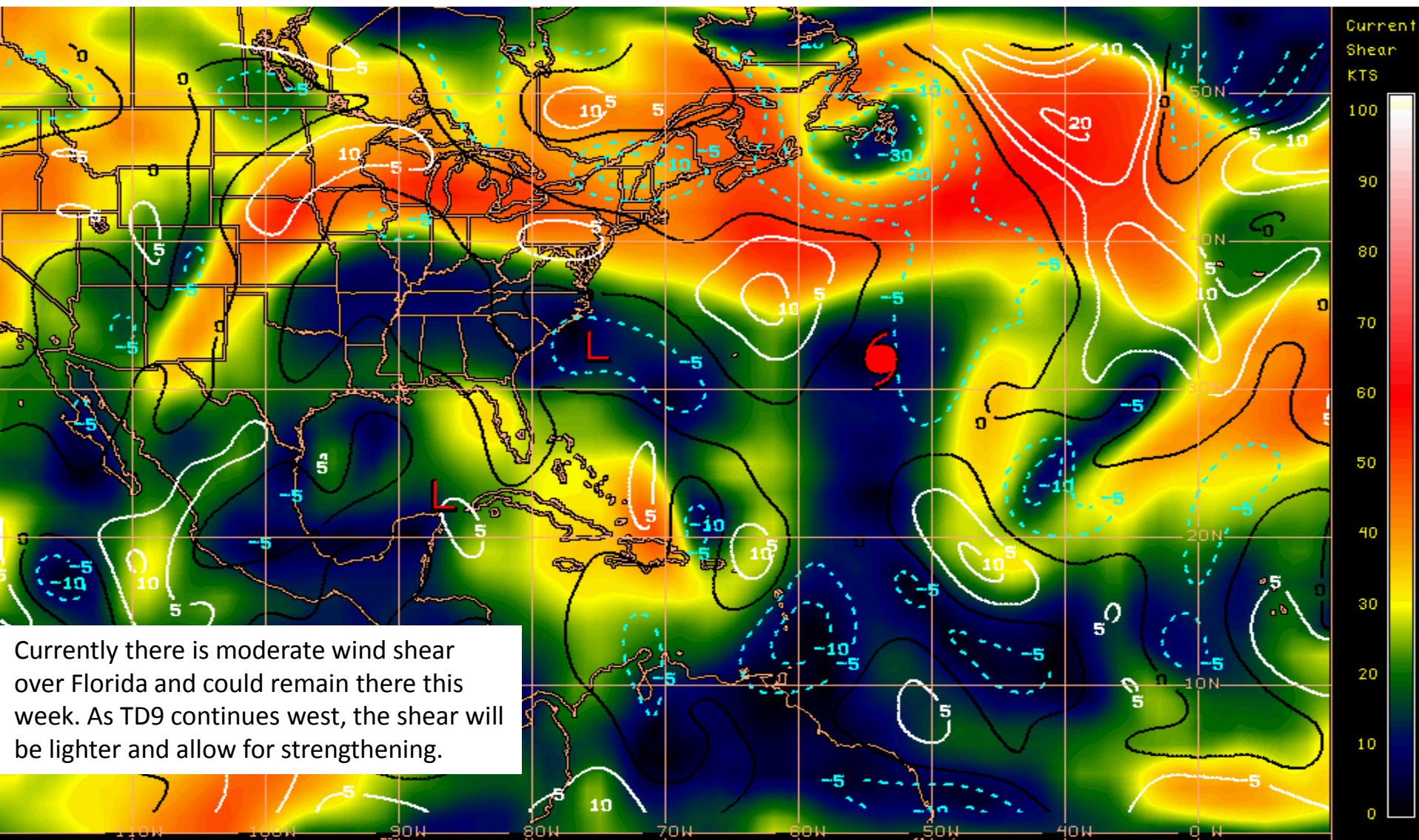


Dry

Saturated

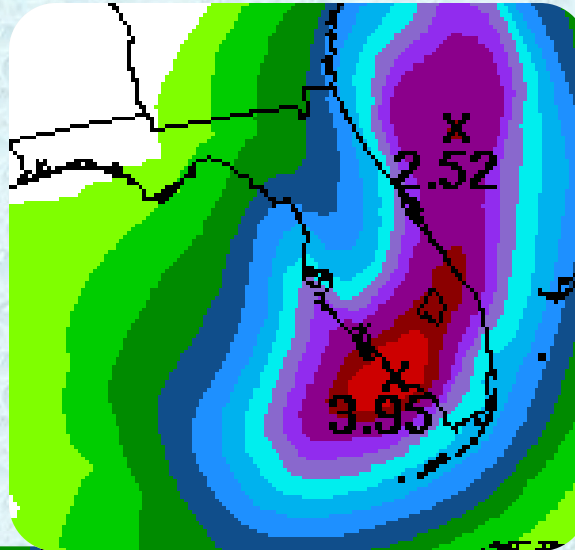
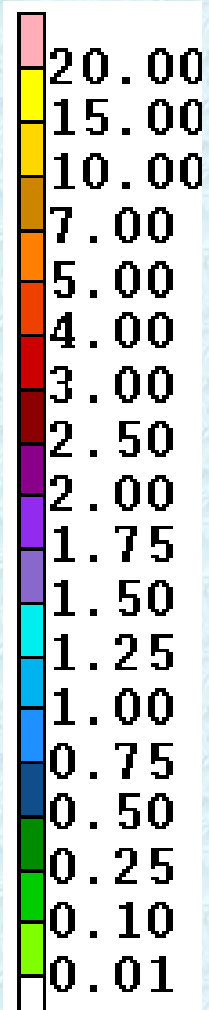


Current Wind Shear (shaded) and Shear Tendency (contours)

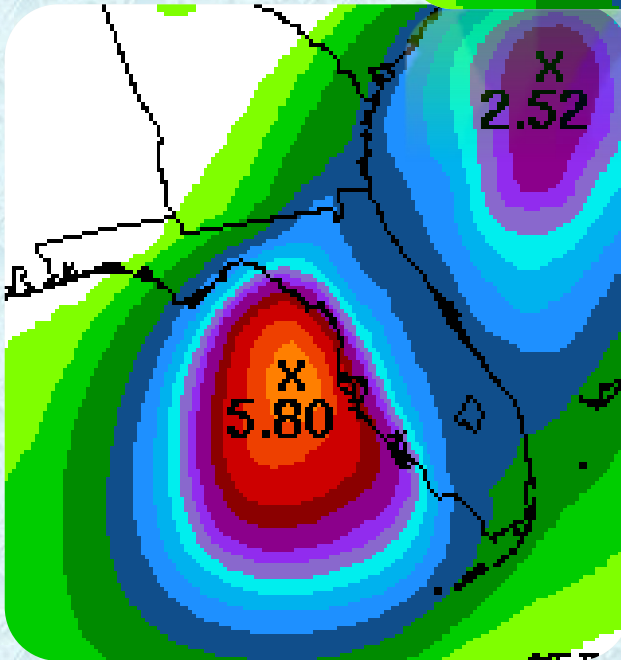


Shear Tendency (KTS) Over Past 24 Hours: Increasing — Decreasing ----

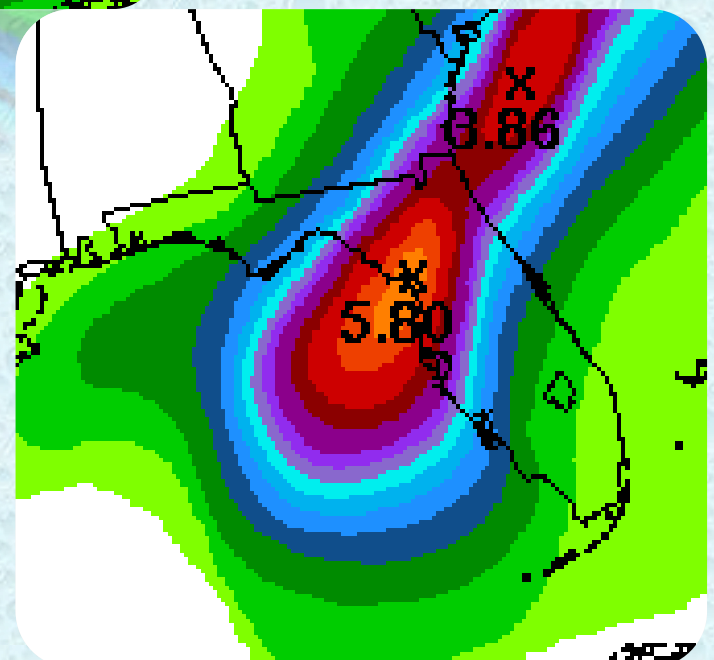
Current Rainfall Forecast



Tuesday

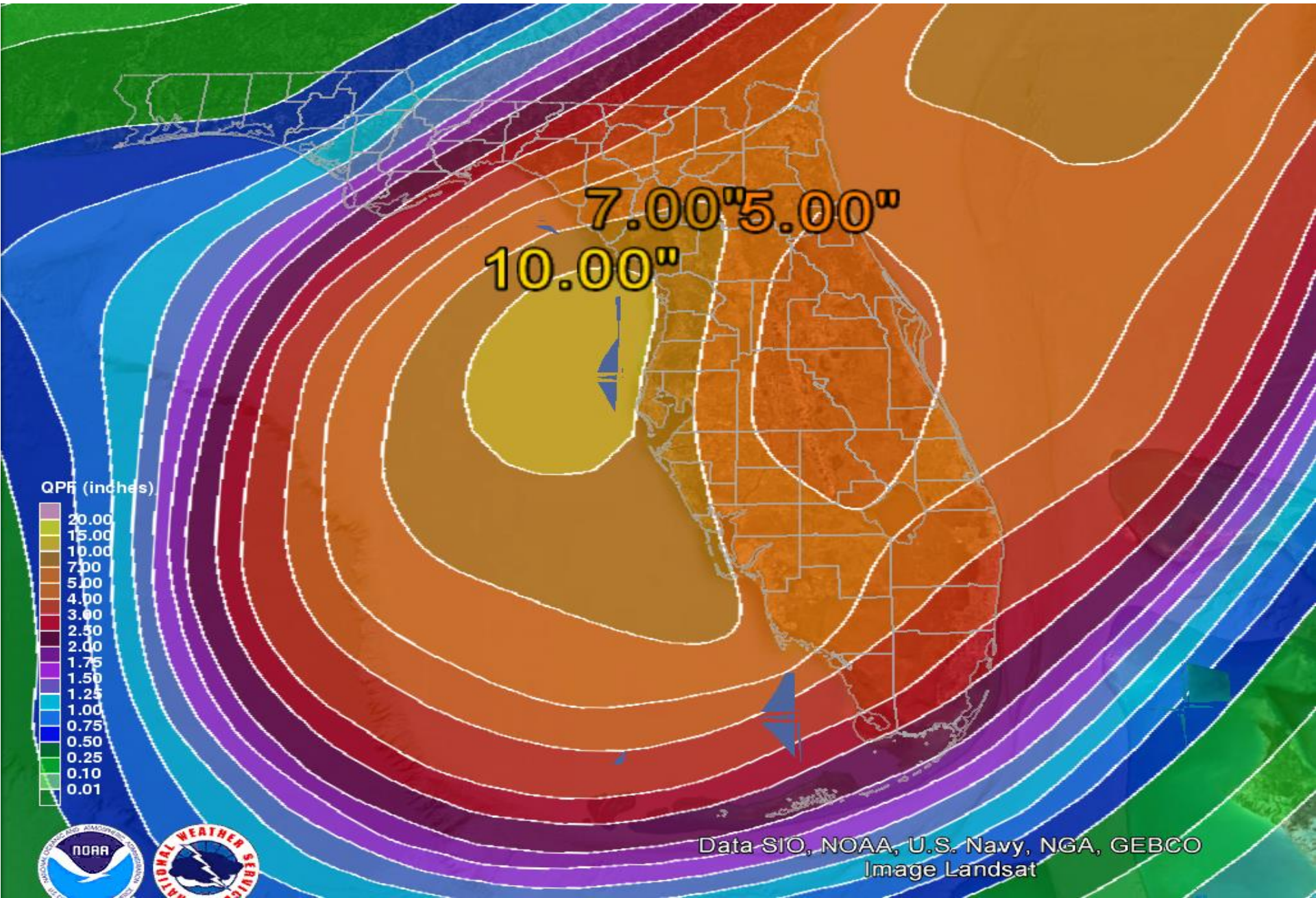


Wednesday



Thursday

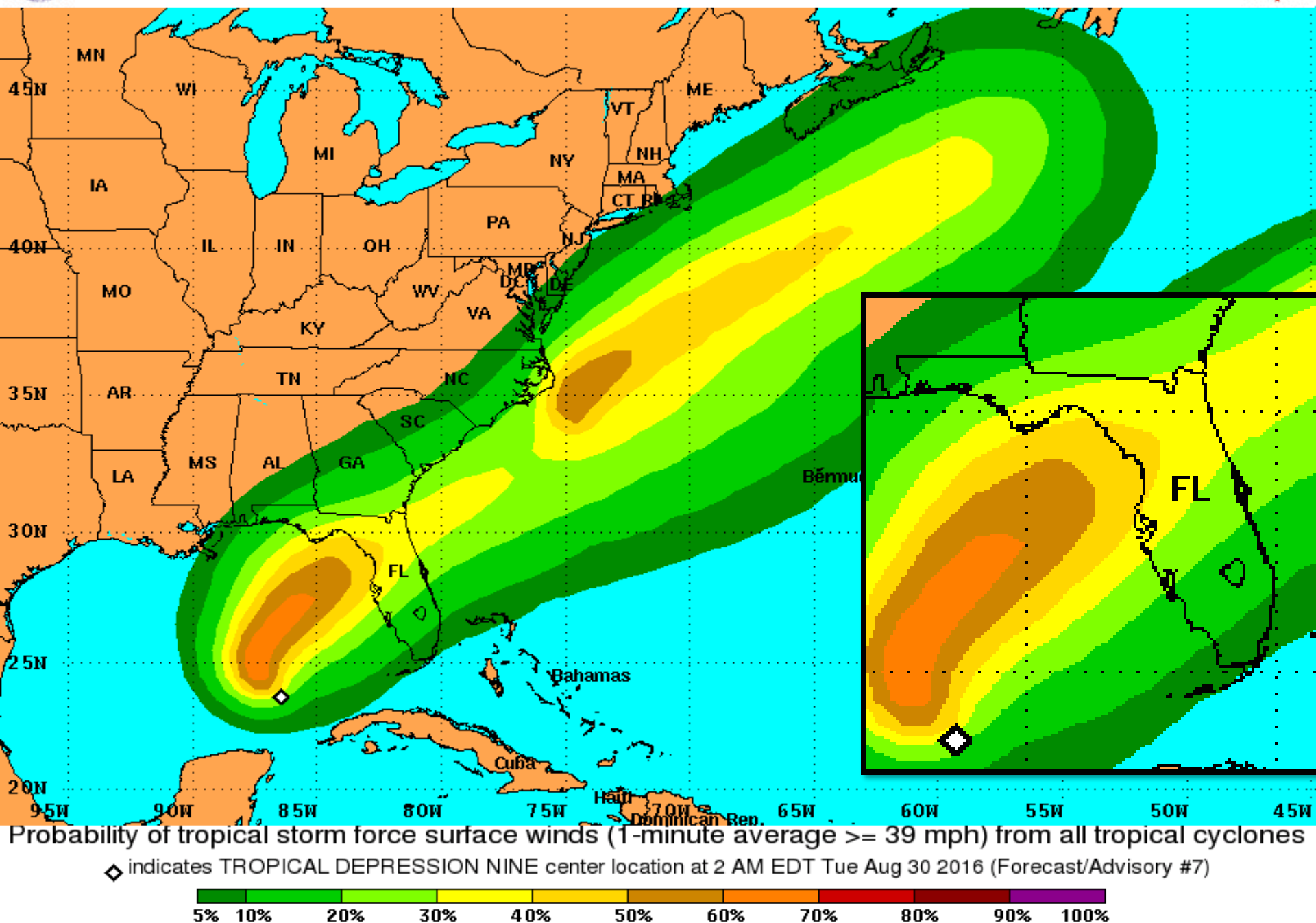
Forecast Rainfall Total – Next 7 Days





Tropical Storm Force Wind Speed Probabilities

For the 120 hours (5 days) from 2 AM EDT Tue Aug 30 to 2 AM EDT Sun Sep 4



20% Storm Surge Exceedance

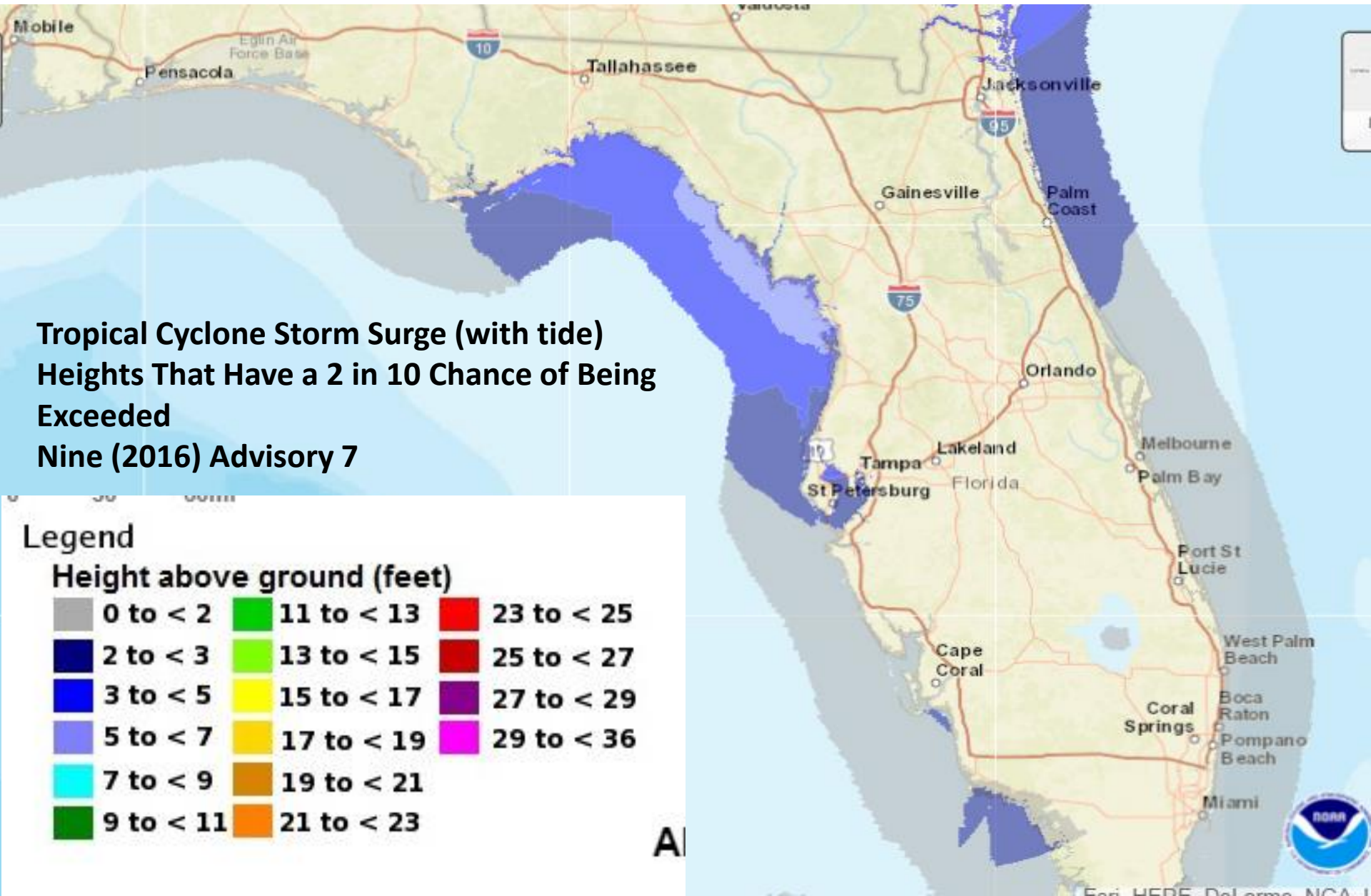
**Tropical Cyclone Storm Surge (with tide)
Heights That Have a 2 in 10 Chance of Being
Exceeded
Nine (2016) Advisory 7**

Legend

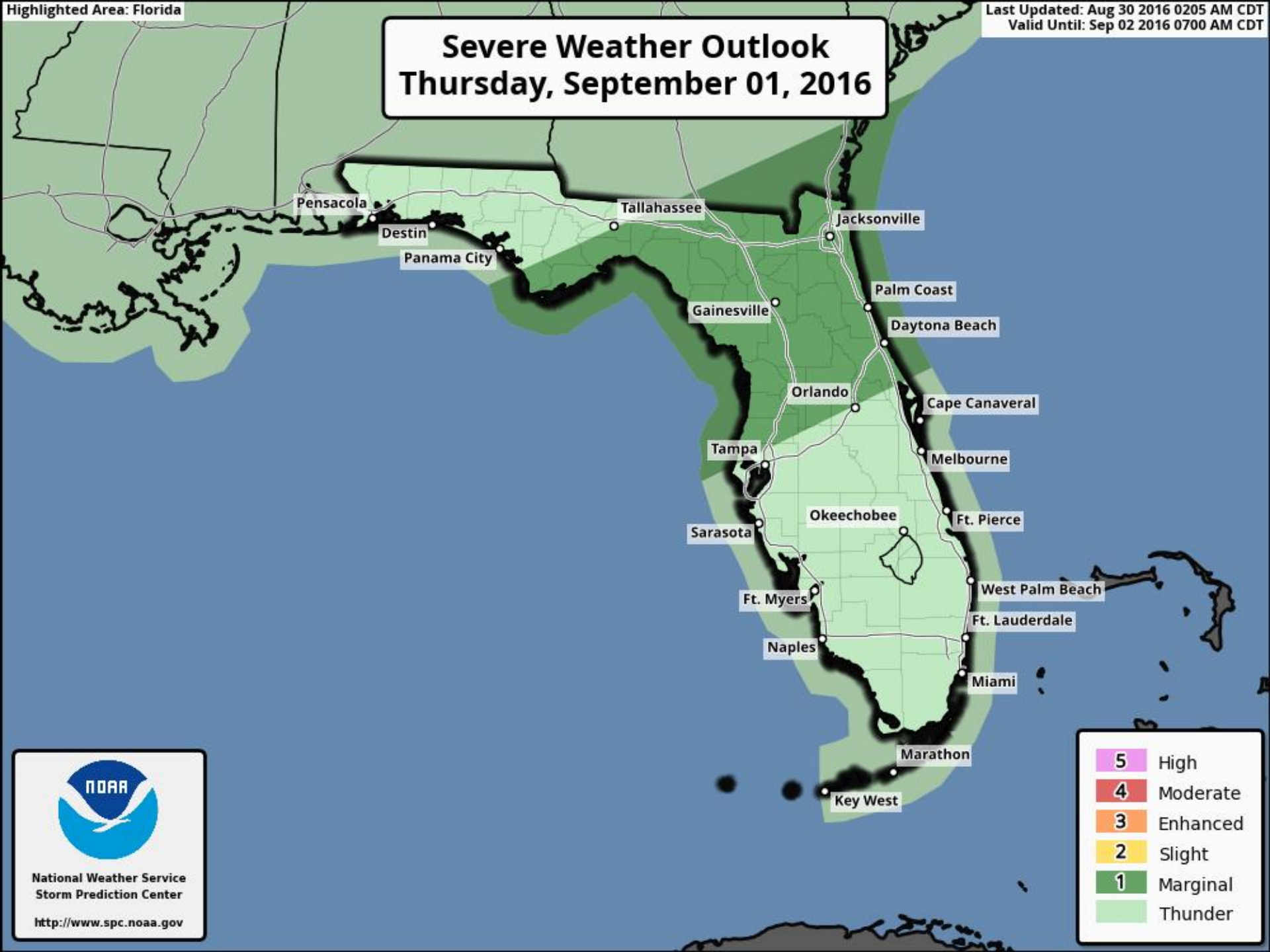
Height above ground (feet)

0 to < 2	11 to < 13	23 to < 25
2 to < 3	13 to < 15	25 to < 27
3 to < 5	15 to < 17	27 to < 29
5 to < 7	17 to < 19	29 to < 36
7 to < 9	19 to < 21	
9 to < 11	21 to < 23	

A



Severe Weather Outlook Thursday, September 01, 2016



National Weather Service
Storm Prediction Center

<http://www.spc.noaa.gov>

5	High
4	Moderate
3	Enhanced
2	Slight
1	Marginal
	Thunder

Hurricane Gaston

5 AM EDT Tue Aug 30 2016

Position 32.0 N 54.0 W

Maximum Winds 100 mph

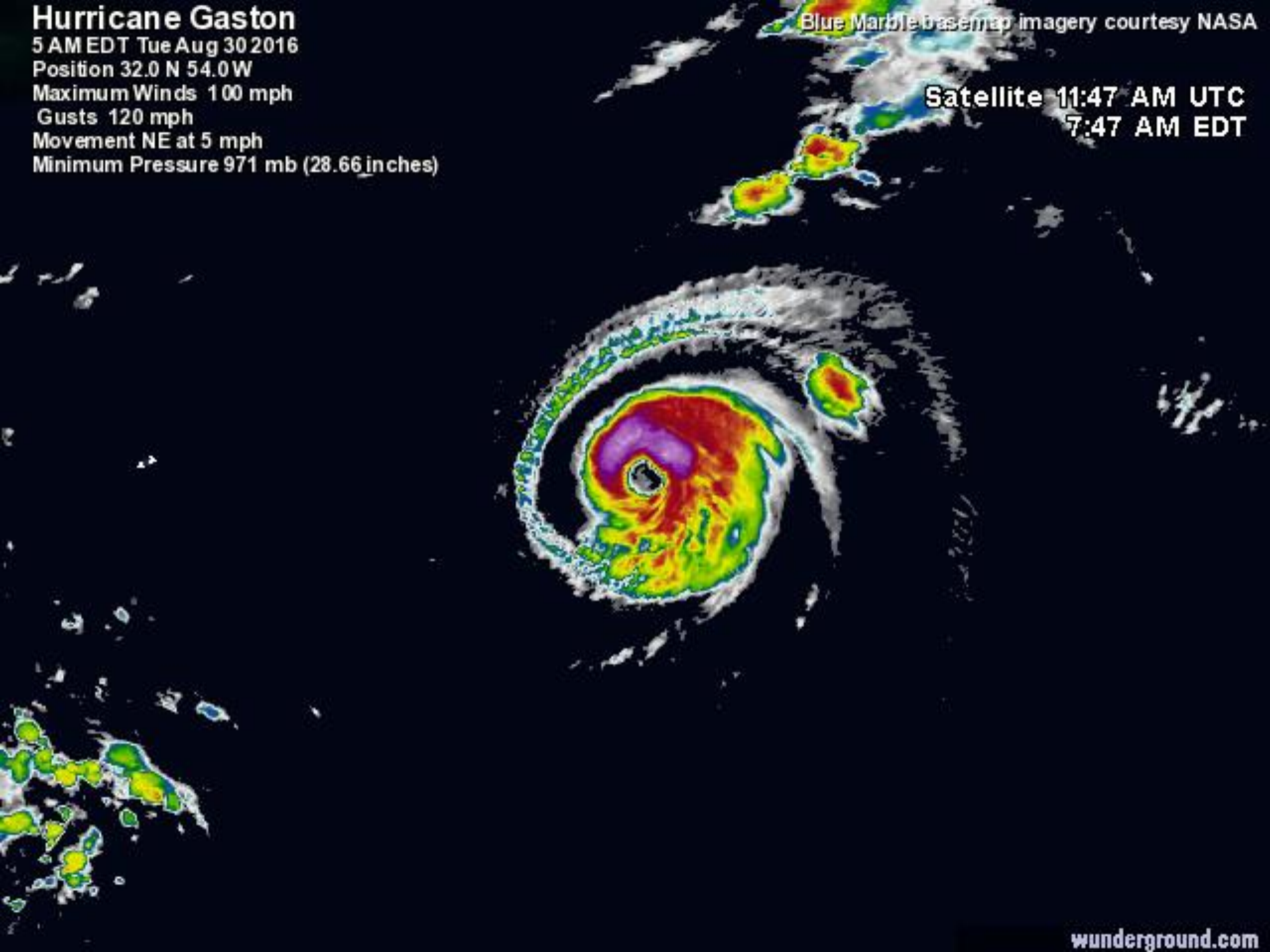
Gusts 120 mph

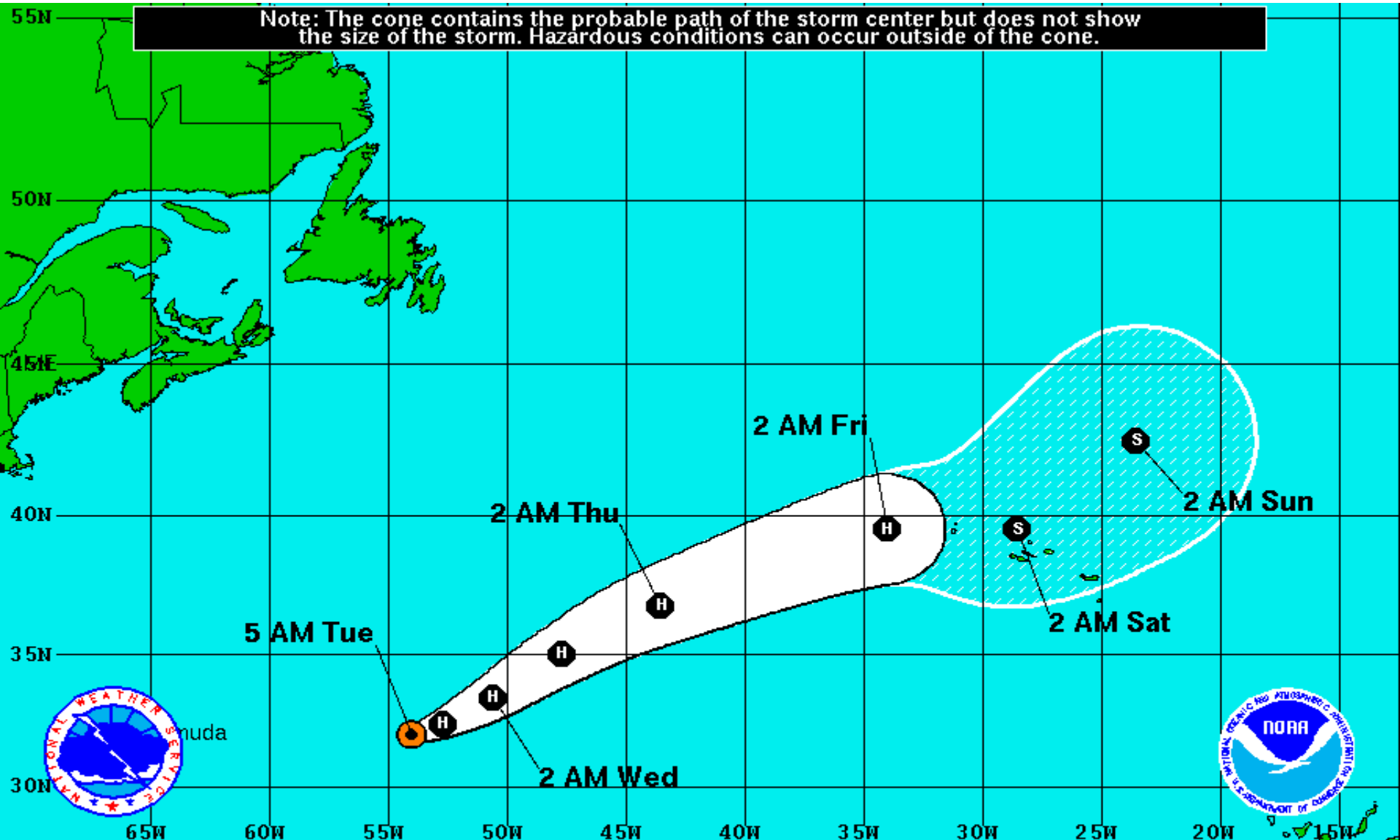
Movement NE at 5 mph

Minimum Pressure 971 mb (28.66 inches)


Blue Marble basemap imagery courtesy NASA



Satellite 11:47 AM UTC
7:47 AM EDT











Hurricane Gaston
 Tuesday August 30, 2016
 5 AM EDT Advisory 31
 NWS National Hurricane Center

Current Information: 
 Center Location 32.0 N 54.0 W
 Max Sustained Wind 100 mph
 Movement NE at 6 mph

Forecast Positions:
 Tropical Cyclone  Post-Tropical
 Sustained Winds: D < 39 mph
 S 39-73 mph H 74-110 mph M > 110mph

Potential Track Area:
 Day 1-3  Day 4-5

Watches:
 Hurricane  Trop.Storm

Warnings:
 Hurricane  Trop.Storm

Tropical Depression Eight

5 AM EDT Tue Aug 30 2016

Position 33.9 N 75.0 W

Maximum Winds 35 mph

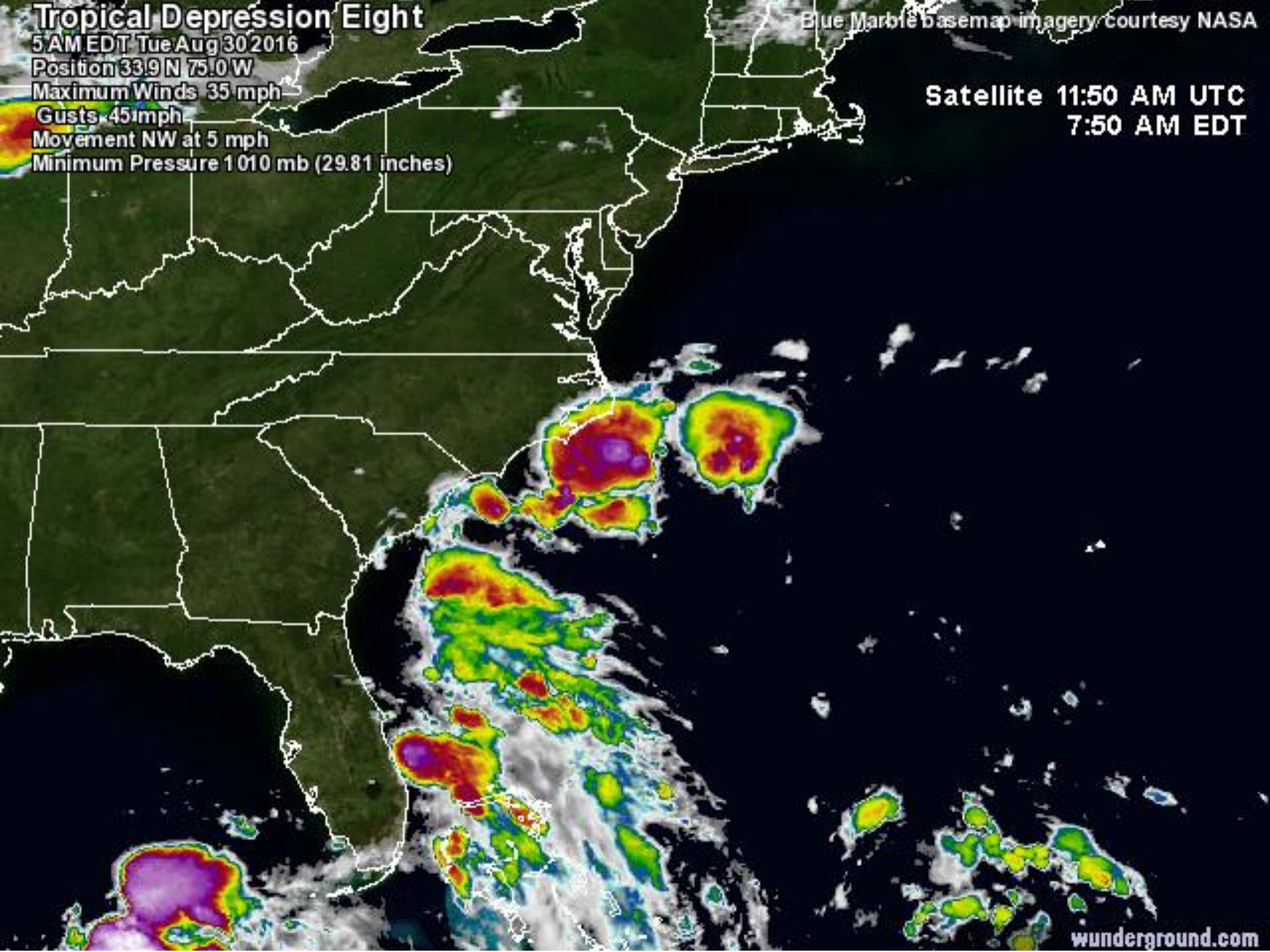
Gusts 45 mph

Movement NW at 5 mph

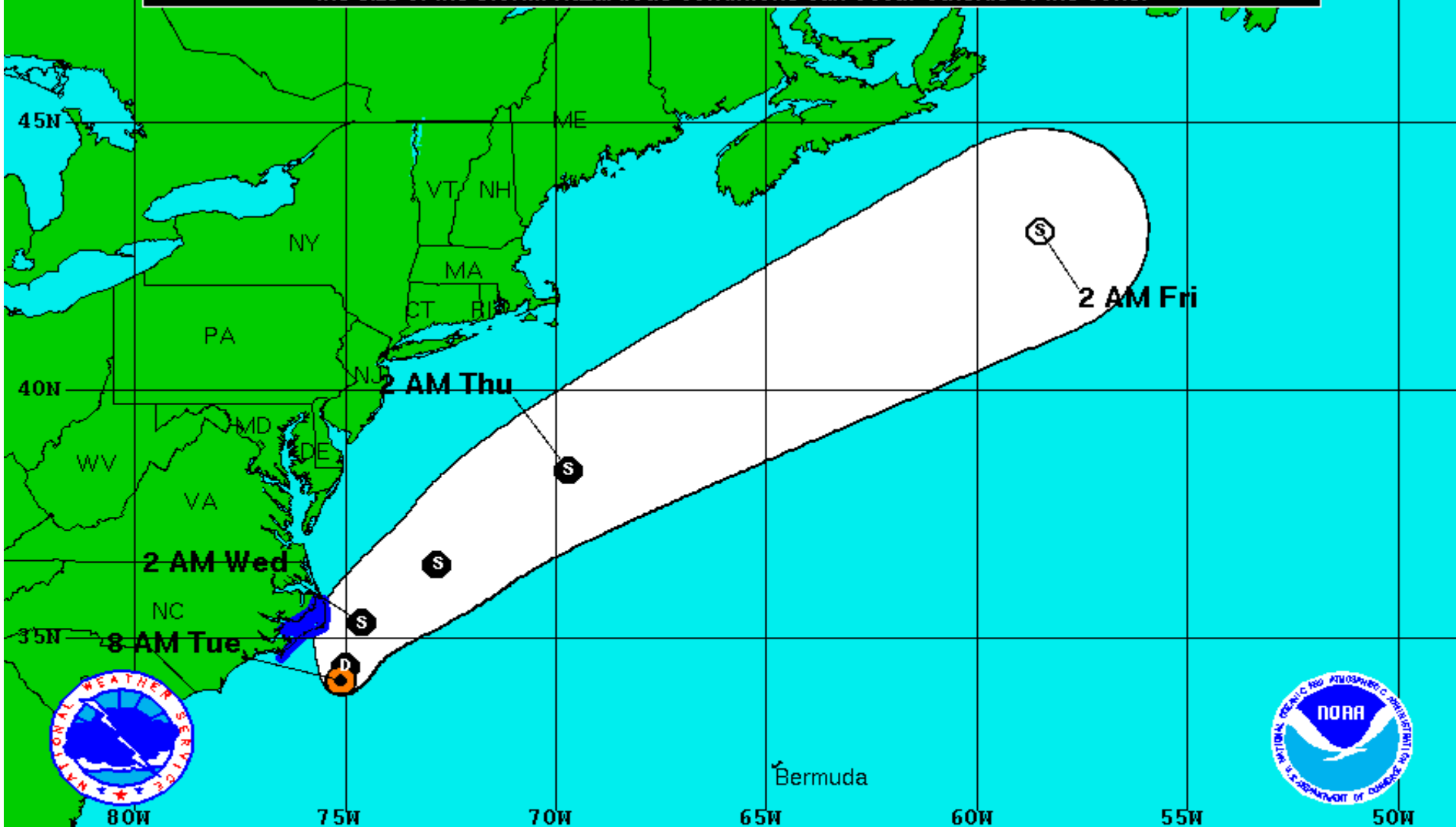
Minimum Pressure 1010 mb (29.81 inches)

Blue Marble basemap imagery courtesy NASA

Satellite 11:50 AM UTC
7:50 AM EDT



Note: The cone contains the probable path of the storm center but does not show the size of the storm. Hazardous conditions can occur outside of the cone.



Tropical Depression Eight

Tuesday August 30, 2016

8 AM EDT Intermediate Advisory 8A

NWS National Hurricane Center

Current Information:

Center Location 34.1 N 75.1 W

Max Sustained Wind 35 mph

Movement NNW at 5 mph

Forecast Positions:

● Tropical Cyclone ○ Post-Tropical

Sustained Winds: D < 39 mph

S 39-73 mph H 74-110 mph M > 110mph

Potential Track Area:

Day 1-3 Day 4-5

Watches:

Hurricane Trop.Storm

Warnings:

Hurricane Trop.Storm



Two-Day Graphical Tropical Weather Outlook

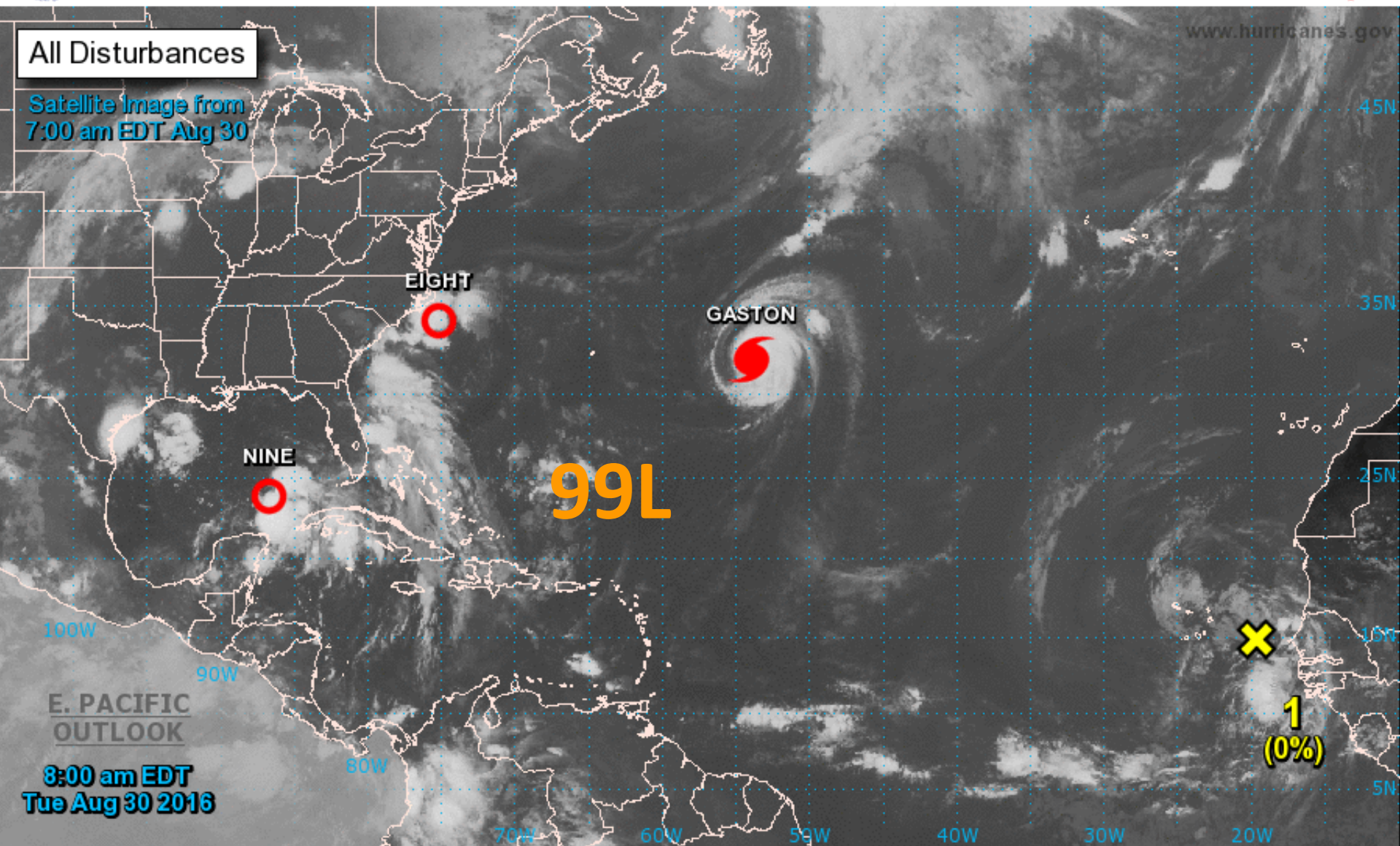
National Hurricane Center Miami, Florida



www.hurricanes.gov

All Disturbances

Satellite Image from
7:00 am EDT Aug 30



E. PACIFIC
OUTLOOK

8:00 am EDT
Tue Aug 30 2016

Current Disturbances and Two-Day Cyclone Formation Chance: < 40% 40-60% > 60%

Tropical or Sub-Tropical Cyclone: Depression Storm Hurricane

Post-Tropical Cyclone Remnants



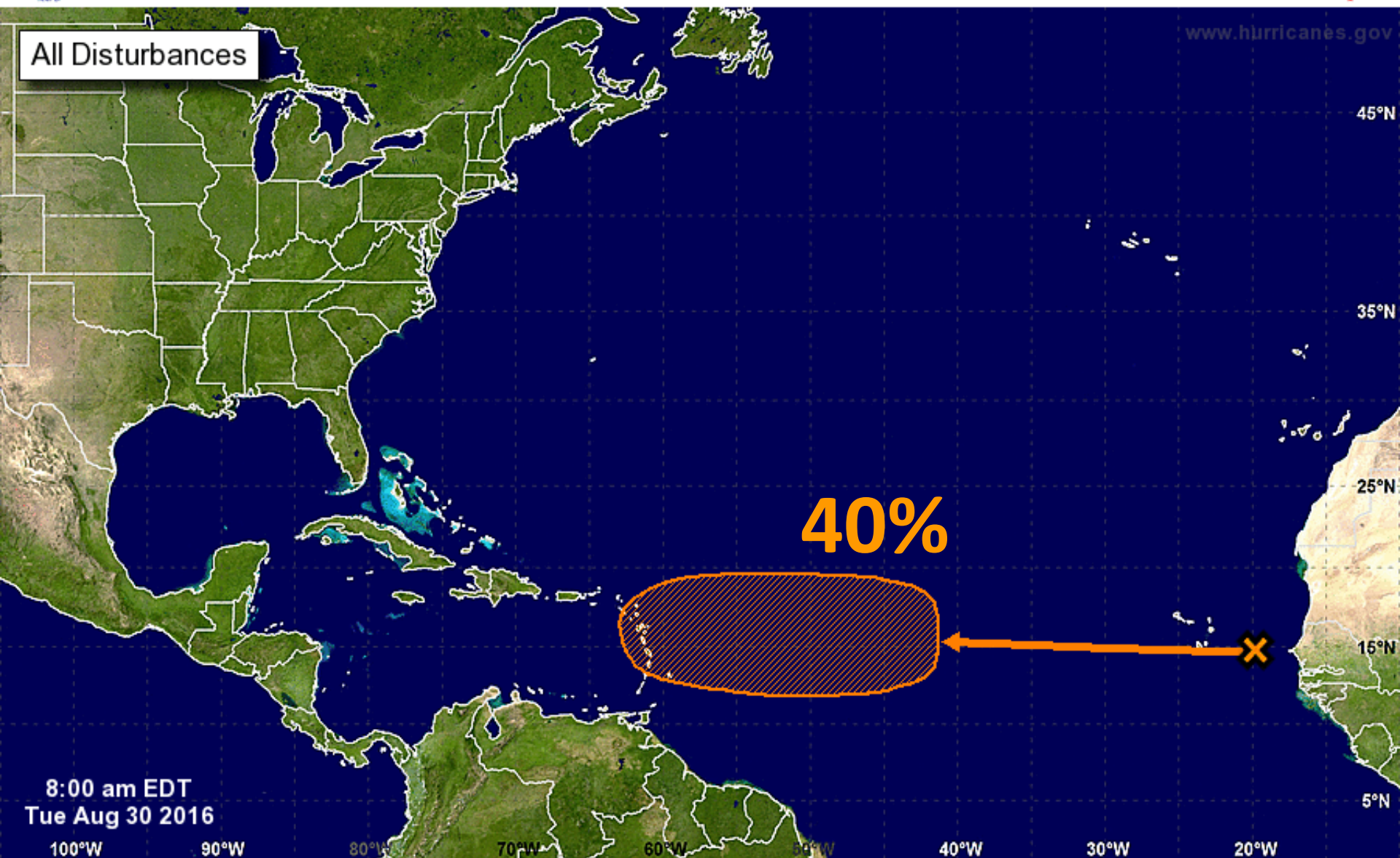
Five-Day Graphical Tropical Weather Outlook

National Hurricane Center Miami, Florida



www.hurricanes.gov

All Disturbances



Tropical Cyclone Formation Potential for the Five-Day Period Ending at 8:00 am EDT Sun Sep 4 2016

Chance of Cyclone Formation in Five Days: ■ Low < 40% ■ Medium 40-60% ■ High > 60%

X indicates current disturbance location; shading indicates potential formation area.

Summary:

- At 5am EDT Tuesday, the center of Tropical Depression 9 was located about 305 miles west of Key West, or approximately 455 miles south-southeast of Pensacola.
- The depression continues to move slowly west at 7mph and a slow west-northwestward motion is expected today. A turn toward the north-northwest is expected tonight, followed by a turn toward the north-northeast on Wednesday.
- Maximum sustained winds remain near 35 mph with higher gusts. Some strengthening is forecast during the next 48 hours, and the depression is expected to become a tropical storm today.
- The next name on the 2016 Atlantic Storm name list is Hermine (pronounced Er-meen).
- Computer track models are in better agreement but are still uncertain in regards to timing and intensity.
- The range of possibilities is between the Tampa Bay area and the Florida Panhandle, with most concentrated on the Florida Big Bend and Nature Coast. However, there is still great uncertainty in regards to the timing of landfall and could be as early as 54 hours or as late as 80 hours.
- The official forecast shows a potential landfall in the southeastern Big Bend or northern Nature Coast sometime on Thursday afternoon as a strong tropical storm.
- Elsewhere, Gaston has weakened to a Category 2 hurricane and will continue moving northeast into the north-central Atlantic.
- Tropical Depression #8 is moving northwest towards the outer banks of North Carolina and could become a tropical storm today.
- The next name after Hermine is Ian.
- A weak area of low pressure and tropical wave is located over the far eastern Atlantic near the Cabo Verde Islands. Conditions are expected to become favorable for gradual development late this week while it moves westward and has a 40% chance of becoming a tropical cyclone within the next 5 days.

Florida Outlook:

- There are currently no watches or warnings for Florida, but could be issued sometime today.
- Areas of the Gulf Coast (between Sarasota and Mexico Beach) and northern Peninsula currently have a 1 in 3 chance of receiving sustained tropical storm force winds within the next 5 days. Chances for hurricane force winds are less than 5% everywhere in Florida.
- A high threat of rip currents is expected to continue for many Florida beaches this week and wave heights could reach up to 15 feet, especially in Apalachee Bay and to the east of where the center tracks.
- Storm surge heights up to 7 feet will be possible along the eastern Big Bend and northern Nature Coast, with surge values of 2-5 feet possible along Apalachee Bay and south towards the Tampa Bay area.
- Inundation graphics will be made available from the National Hurricane Center upon the issuance of tropical-related watches.
- Heavy rain will also be a large threat as rainfall totals both ahead of the system and directly associated with TD9 could produce storm total rainfall amounts up to 6-10" this week.
- There is a marginal risk of severe weather including tornadoes possible for portions of North Florida on Thursday.
- Gaston and T.D. #8 do not pose a threat to Florida or the U.S.

Another briefing packet will be issued this afternoon. For more information on this system, please visit the NHC website at www.nhc.noaa.gov



TROPICAL UPDATE

Created by:

Amy Godsey, Chief State Meteorologist
amy.godsey@em.myflorida.com

State Meteorological Support Unit
Florida Division of Emergency
Management

Users wishing to subscribe (approval pending) to this distribution list, register at https://public.govdelivery.com/accounts/FLDEM/subscriber/new?topic_id=SERT_Met_Tropics.

Other reports available for subscription are available at <https://public.govdelivery.com/accounts/FLDEM/subscriber/new?preferences=true>