



TROPICAL UPDATE

5 PM EDT

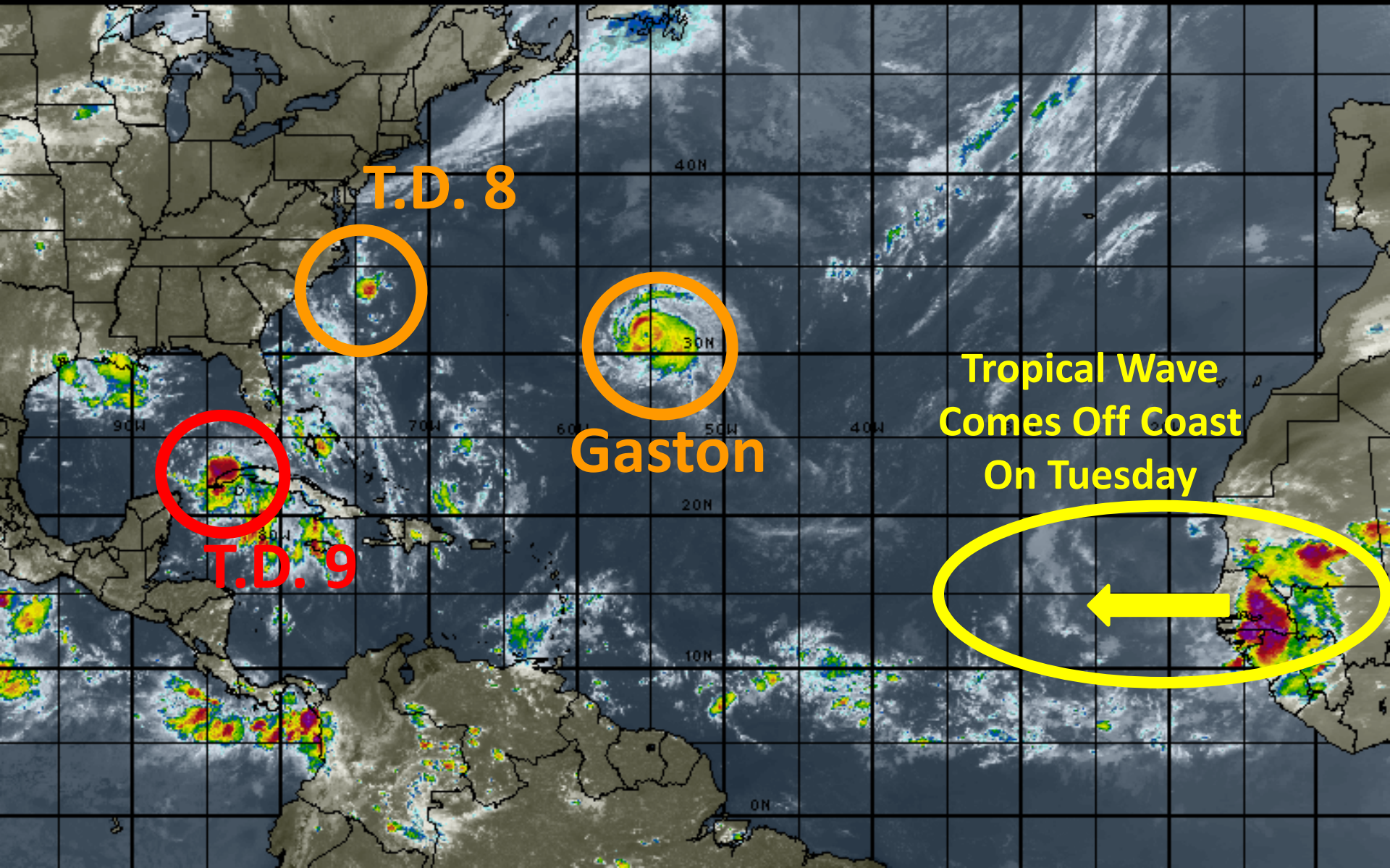
Monday, August 29, 2016

T.D. #9, T.D. #8, & Hurricane Gaston

This update is intended for government and emergency response officials, and is provided for informational and situational awareness purposes only. Forecast conditions are subject to change based on a variety of environmental factors. For additional information, or for any life safety concerns with an active weather event please contact your County Emergency Management or Public Safety Office, local National Weather Service forecast office or visit the National Hurricane Center website at www.nhc.noaa.gov.

Atlantic Basin Satellite Image

18:00 29-AUG-2016 GMT ©Copyright WSI Corporation <http://www.wsi.com>





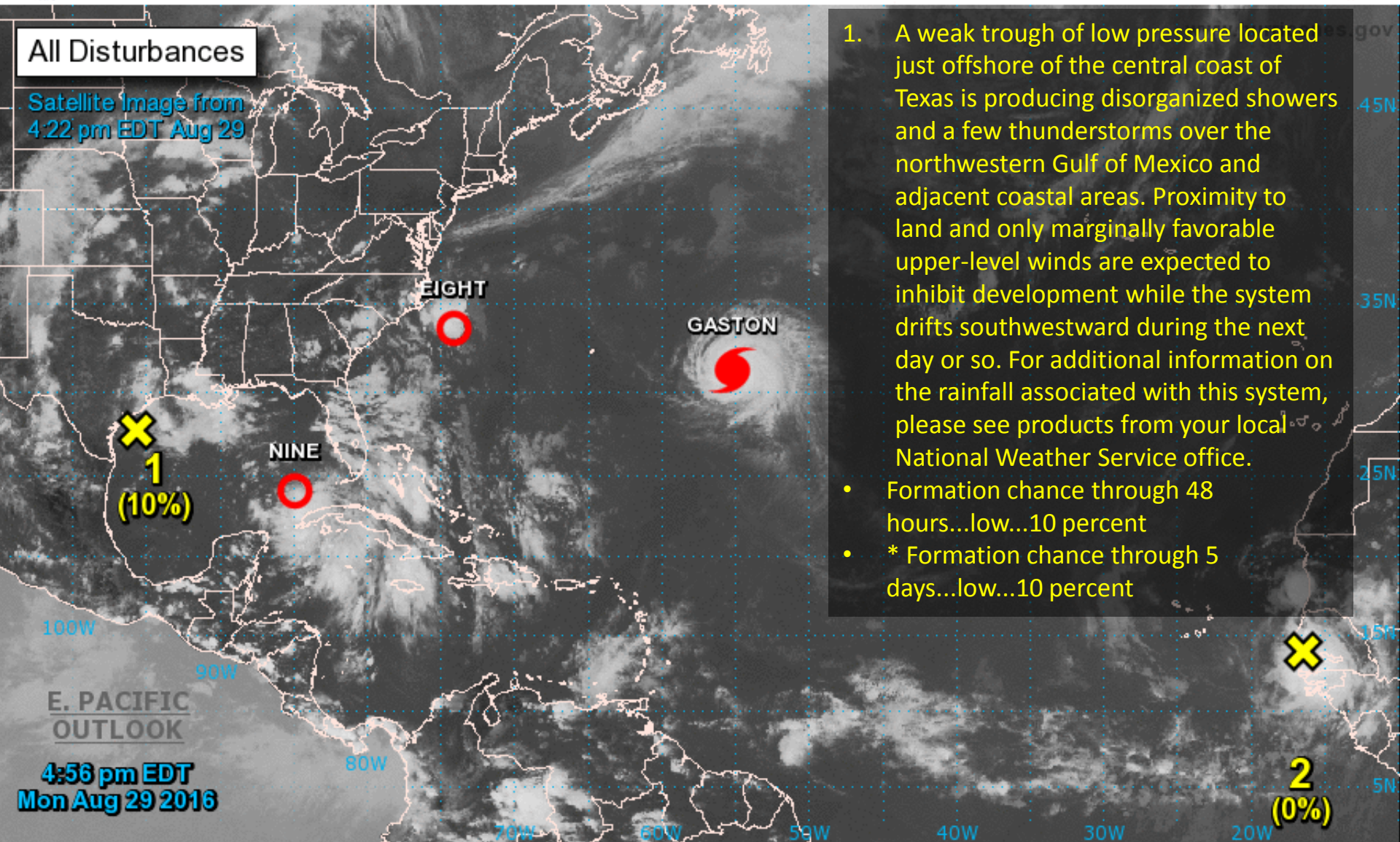
Two-Day Graphical Tropical Weather Outlook

National Hurricane Center Miami, Florida



All Disturbances

Satellite Image from
4:22 pm EDT Aug 29



1. A weak trough of low pressure located just offshore of the central coast of Texas is producing disorganized showers and a few thunderstorms over the northwestern Gulf of Mexico and adjacent coastal areas. Proximity to land and only marginally favorable upper-level winds are expected to inhibit development while the system drifts southwestward during the next day or so. For additional information on the rainfall associated with this system, please see products from your local National Weather Service office.

- Formation chance through 48 hours...low...10 percent
- * Formation chance through 5 days...low...10 percent

Current Disturbances and Two-Day Cyclone Formation Chance: < 40% 40-60% > 60%

Tropical or Sub-Tropical Cyclone: Depression Storm Hurricane

Post-Tropical Cyclone Remnants



Five-Day Graphical Tropical Weather Outlook

National Hurricane Center Miami, Florida



All Disturbances

Note: Shaded areas show where a tropical cyclone is likely to develop within the given time frame.

It DOES NOT show what the likely forecast track of a tropical cyclone will be once it forms!

A tropical wave is expected to move offshore of the west coast of Africa tonight. Conditions are expected to be favorable for gradual development of this system later this week while it moves westward at 15 to 20 mph over the tropical Atlantic.

* Formation chance through 48 hours...low...near 0 percent

* Formation chance through 5 days...medium...50 percent

10%

50%

2:00 pm EDT
Mon Aug 29 2016

100°W 90°W 80°W 70°W 60°W 50°W 40°W 30°W 20°W

Tropical Cyclone Formation Potential for the Five-Day Period Ending at 2:00 pm EDT Sat Sep 3 2016

Chance of Cyclone Formation in Five Days: ■ Low < 40% ■ Medium 40-60% ■ High > 60%

X indicates current disturbance location; shading indicates potential formation area.

Tropical Depression Nine

11 AM EDT Mon Aug 29 2016

Position 23.6°N 84.3°W

Maximum Winds 35 mph

Gusts 45 mph

Movement W at 6 mph

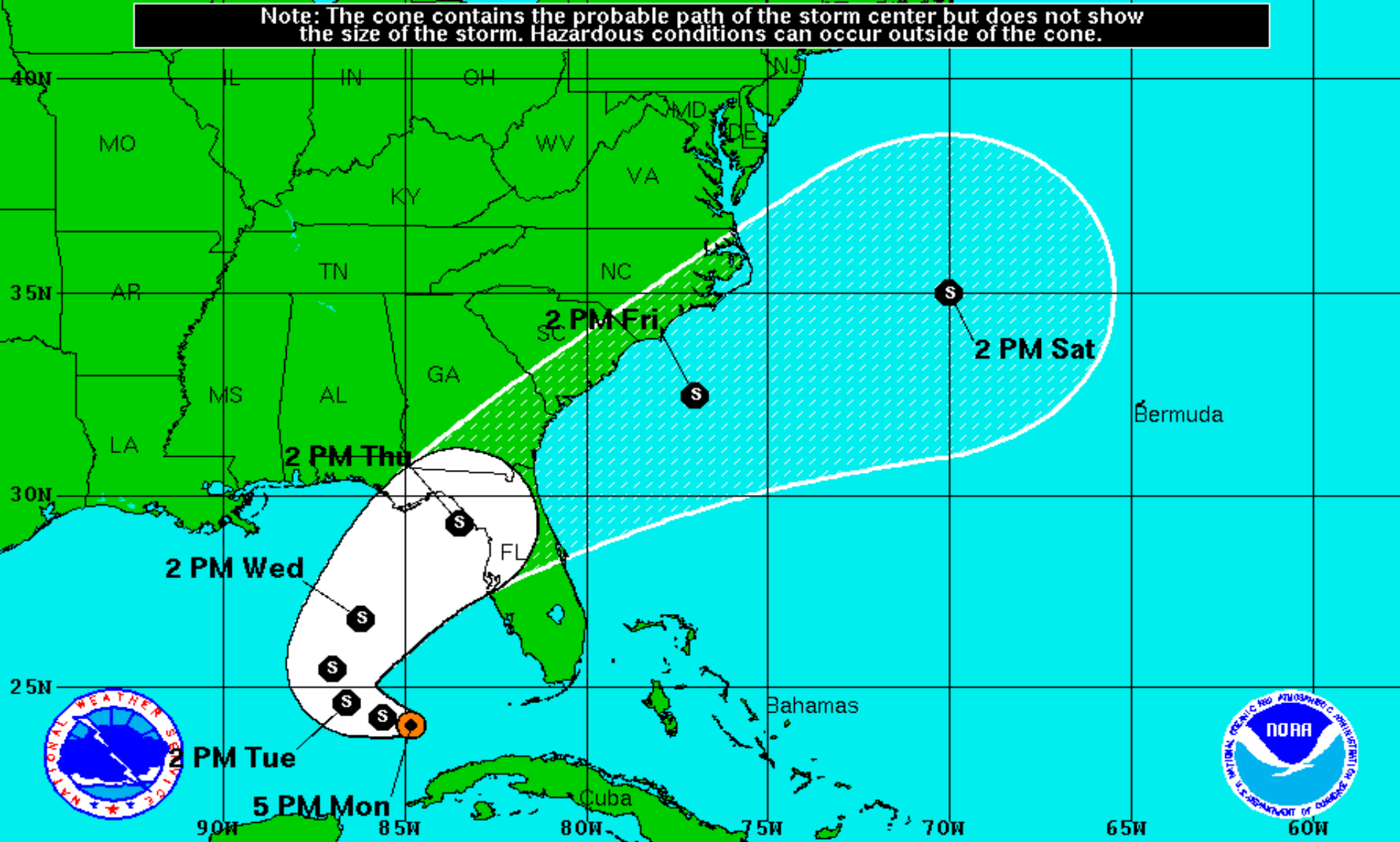
Minimum Pressure 1007 mb (29.73 inches)

Blue Marble basemap imagery courtesy NASA

Satellite 8:10 PM UTC
4:10 PM EDT



Note: The cone contains the probable path of the storm center but does not show the size of the storm. Hazardous conditions can occur outside of the cone.



Tropical Depression Nine

Monday August 29, 2016

5 PM EDT Advisory 5

NWS National Hurricane Center

Current Information:

Center Location 24.0 N 84.8 W

Max Sustained Wind 35 mph

Movement WNW at 5 mph

Forecast Positions:

● Tropical Cyclone ○ Post-Tropical

Sustained Winds: D < 39 mph

S 39-73 mph H 74-110 mph M > 110mph

Potential Track Area:

Day 1-3 Day 4-5

Watches:

Hurricane Trop.Storm

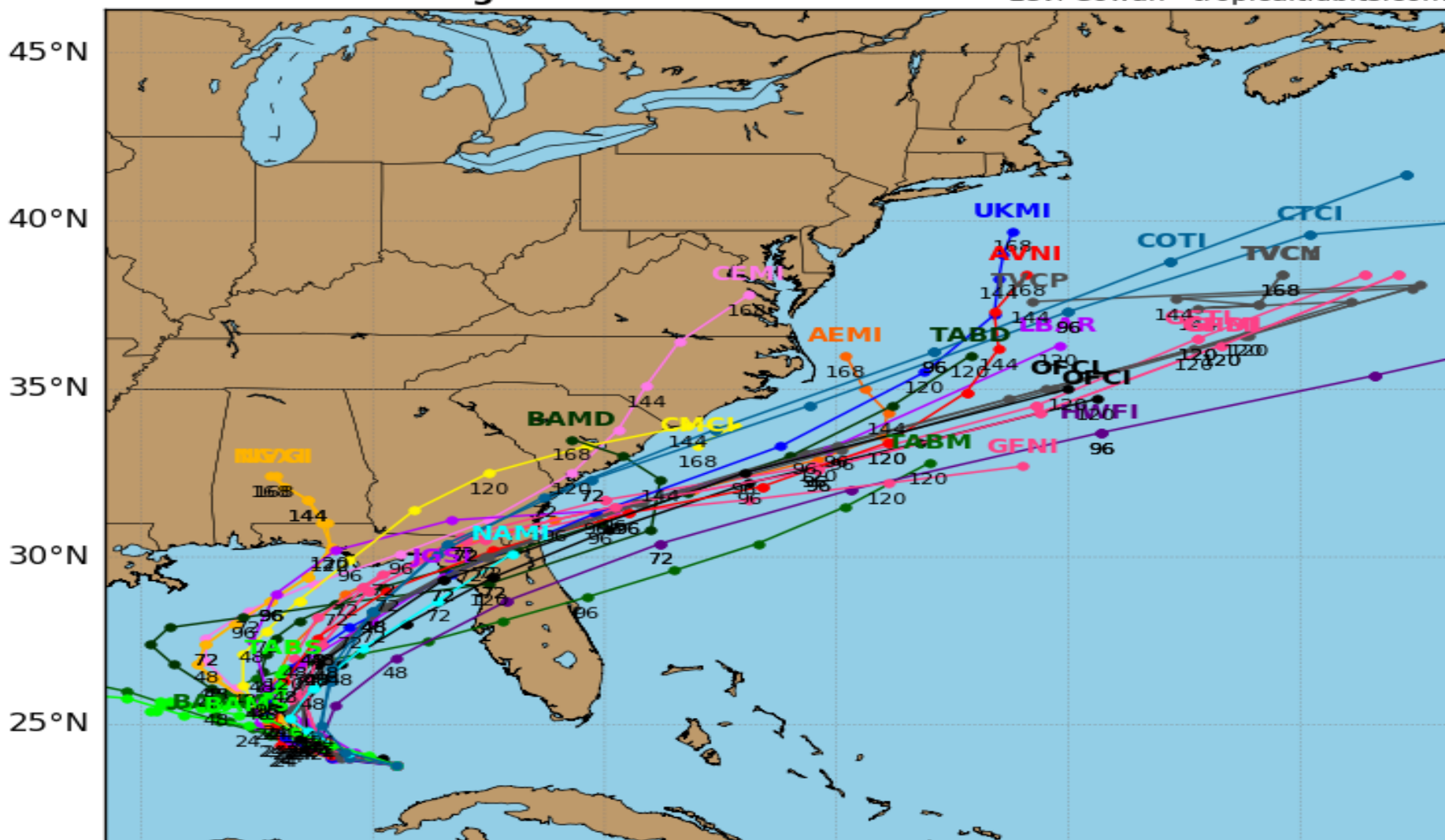
Warnings:

Hurricane Trop.Storm

Tropical Depression 09L Model Track Guidance

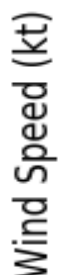
Initialized at 18z Aug 29 2016

Levi Cowan - tropicaltidbits.com



Forecast tracks for the 18Z model runs have a good consensus on the possible track of T.D. 9. Models are in agreement that the system will continue moving west northwest into the southeastern Gulf of Mexico for the next 24-36 hours. Then, the high pressure over the Mid-Atlantic states is expected to rapidly move offshore and dissipate causing the steering currents in the Gulf of Mexico to quickly shift to a northeast direction. T.D. 9 will take a quick sharp turn to the north and then the northeast on Wednesday. As of now, models are predicting a landfall in the eastern Big Bend area. Please be aware that impacts will definitely be felt in areas east and west of where this system comes ashore.

Levi Cowan - tropicaltidbits.com



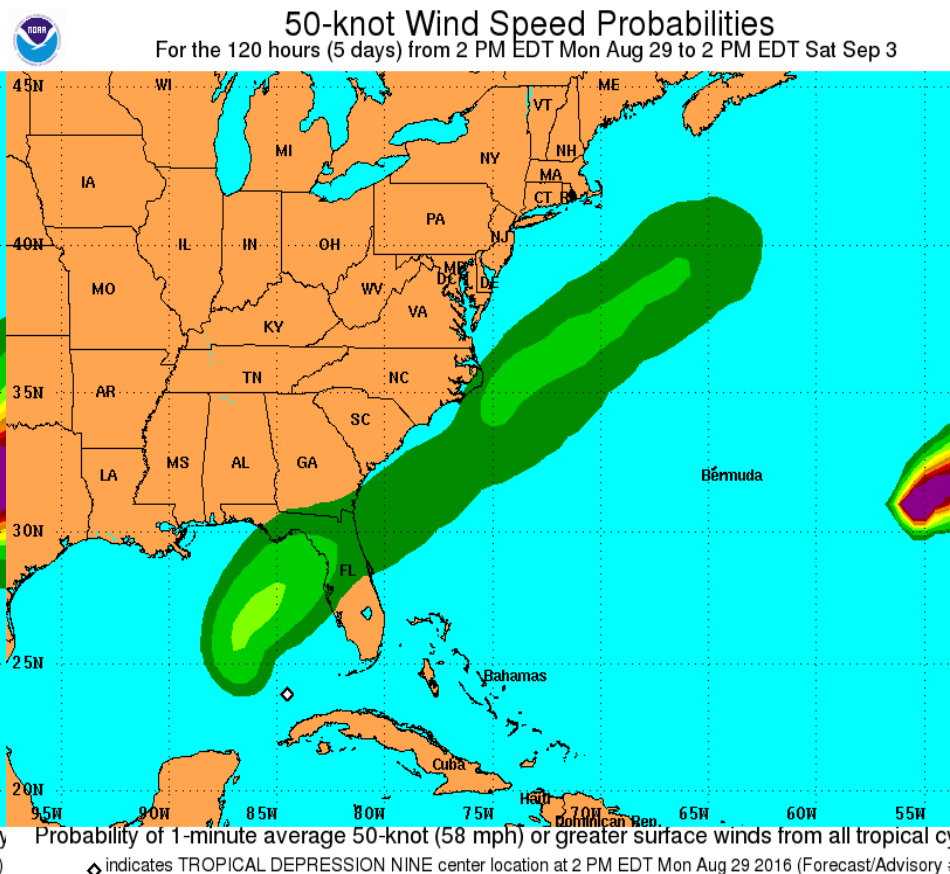
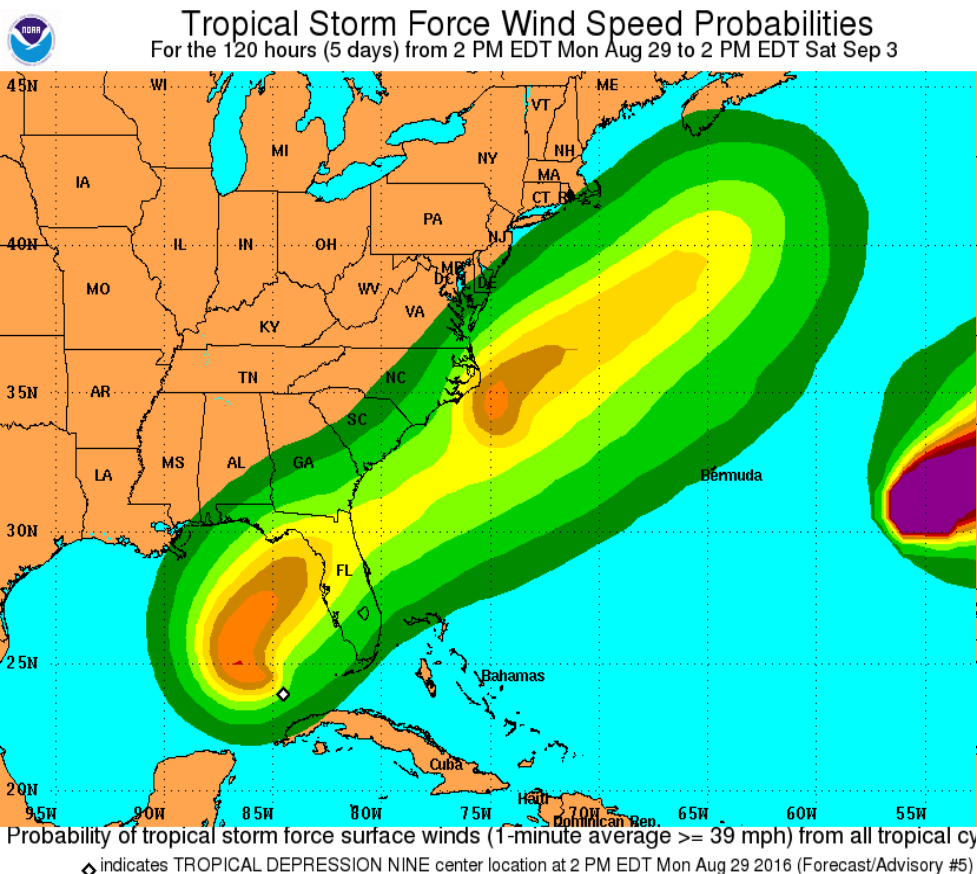
Most models are now in agreement that T.D. 9 will become a tropical storm. Today we have seen the models trending towards a stronger tropical storm at landfall than yesterday. This does not mean that we will absolutely experience a stronger system, and additional monitoring is necessary. **Note:** Statistical models (SHF5, SHIP, DSHP, LGEM) are based on historical relationships between hurricane-specific information, such as the location and time of year, and the behavior of historical hurricanes. Due to their simplicity, statistical models are generally less skillful than dynamical models.

Tropical Storm Wind Probabilities (34Kt):

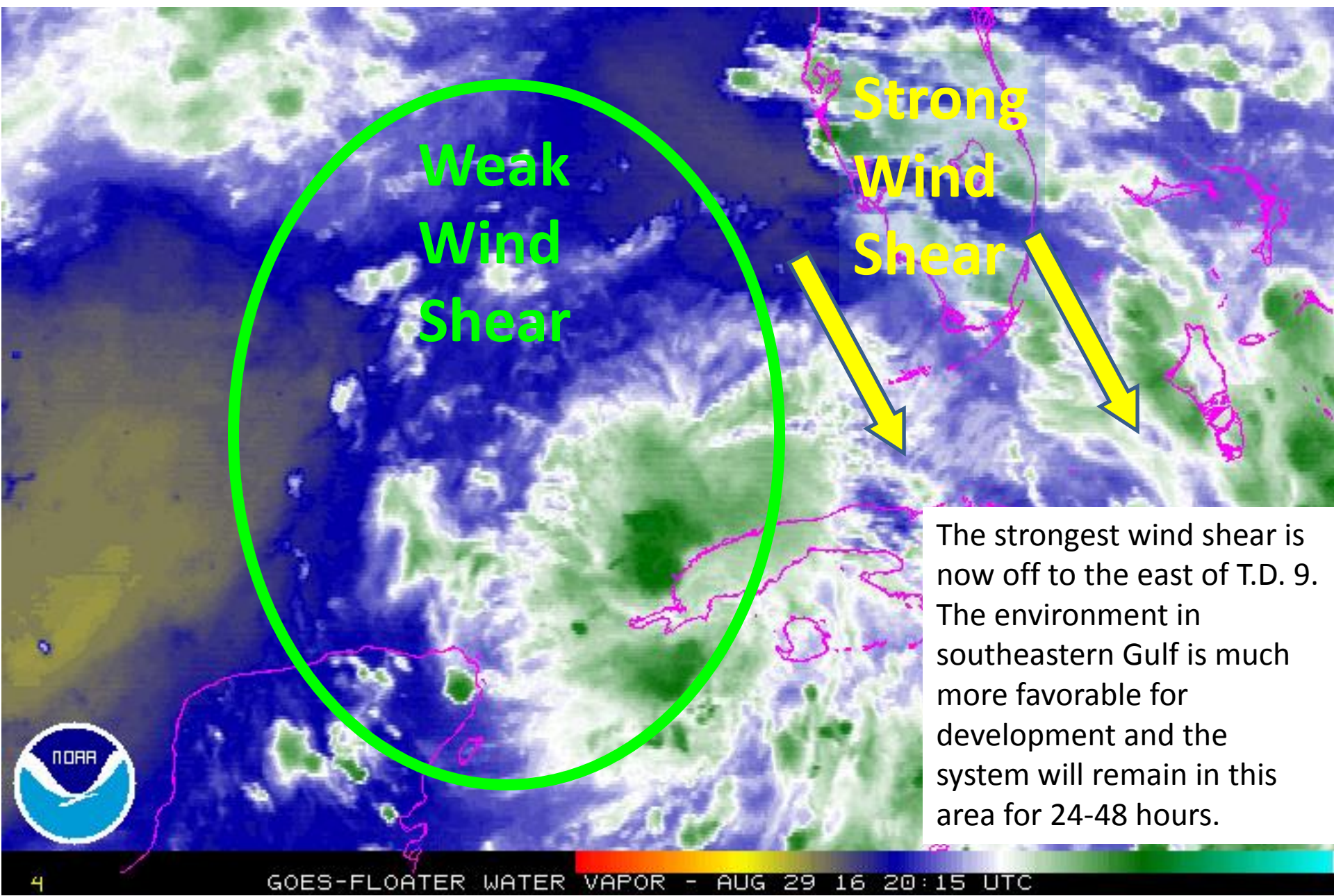
Pensacola	12%
Panama City	28%
Apalachicola	36%
Cedar Key	43%
Gainesville	37%
Tampa	36%
Ft. Myers	19%
Jacksonville	31%

Tropical Storm Wind Probabilities (50Kt):

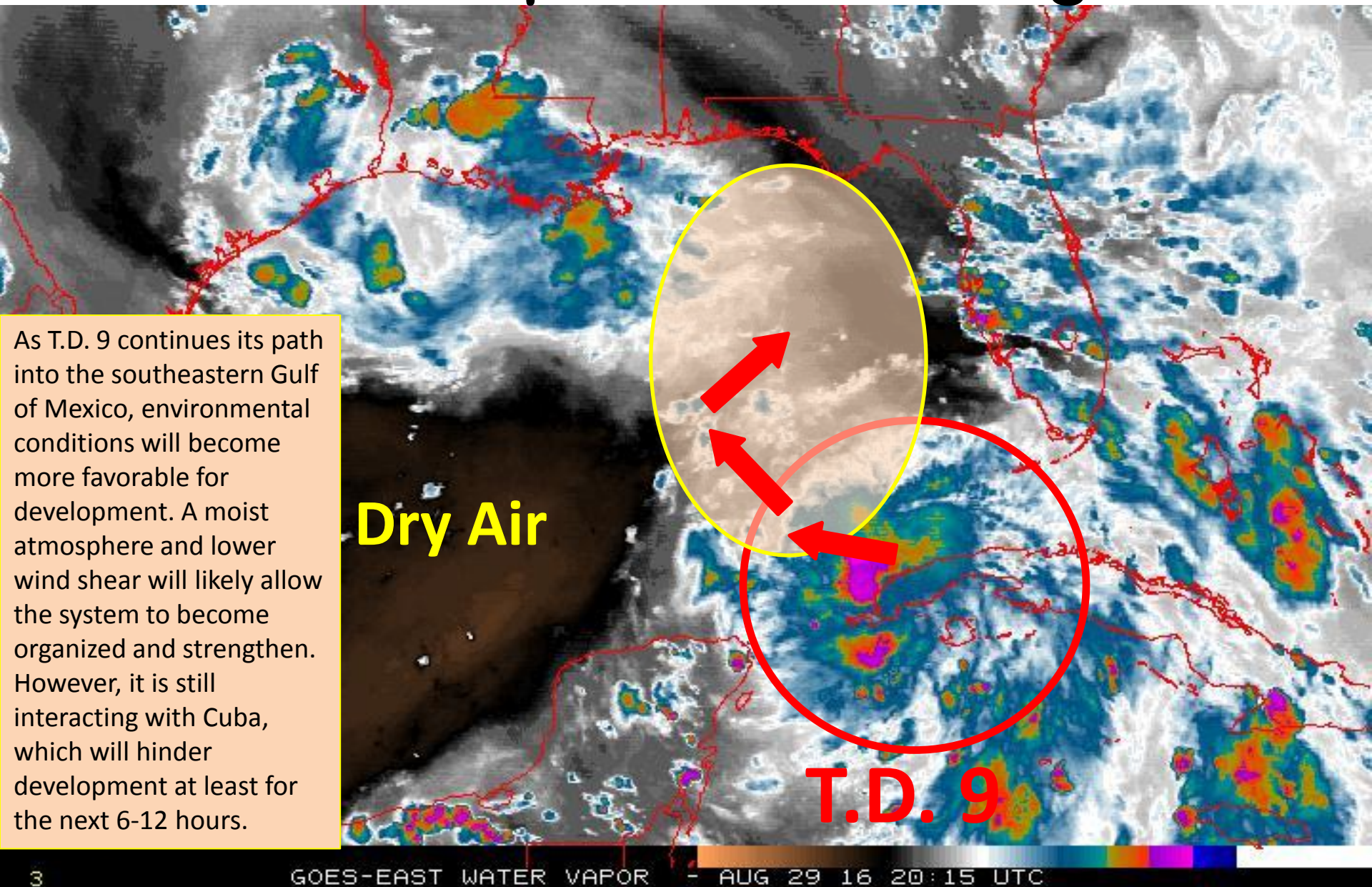
Pensacola	0%
Panama City	7%
Apalachicola	9%
Cedar Key	12%
Gainesville	9%
Tampa	8%
Ft. Myers	3%
Jacksonville	8%



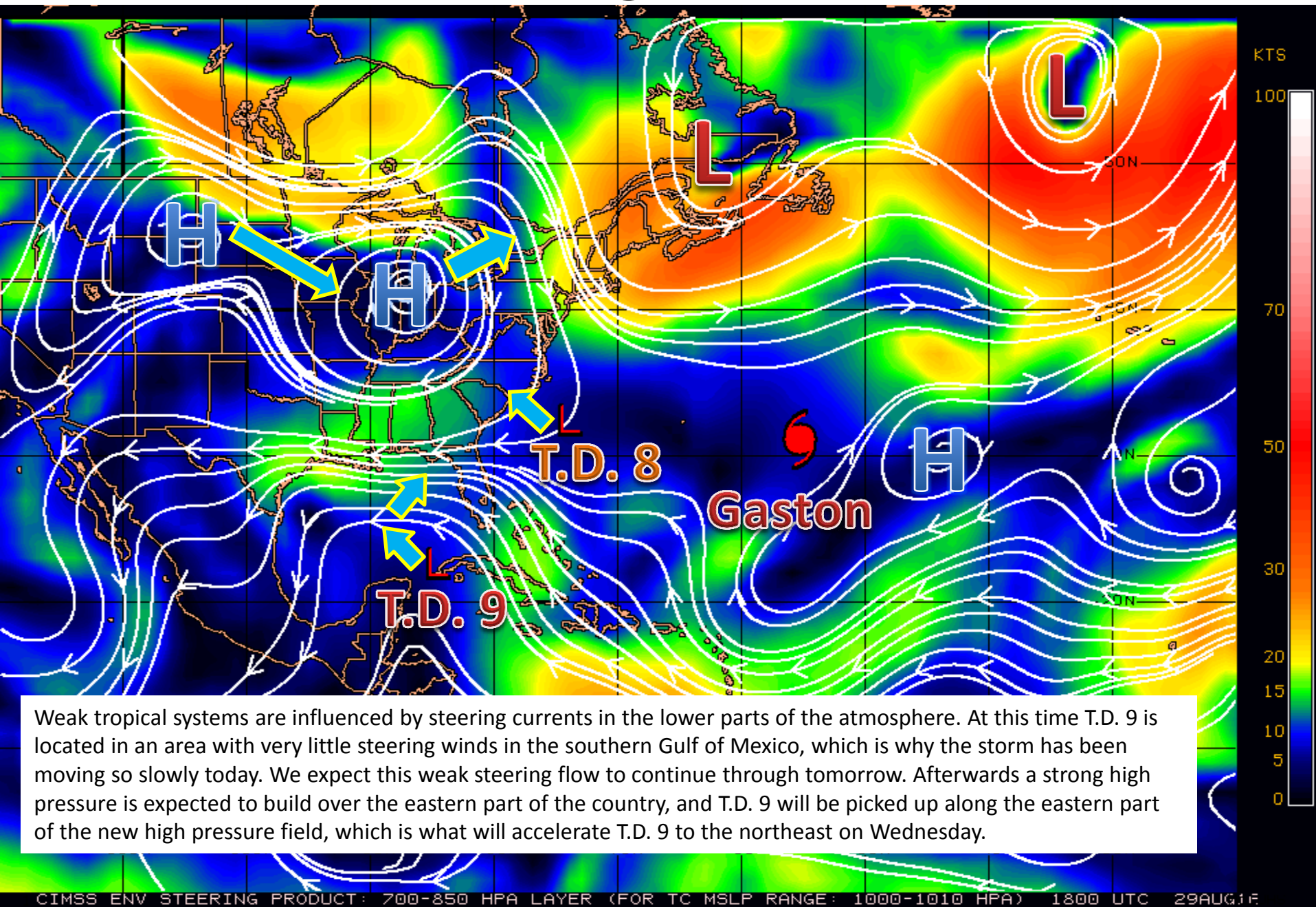
T.D. 9 Water Vapor Image



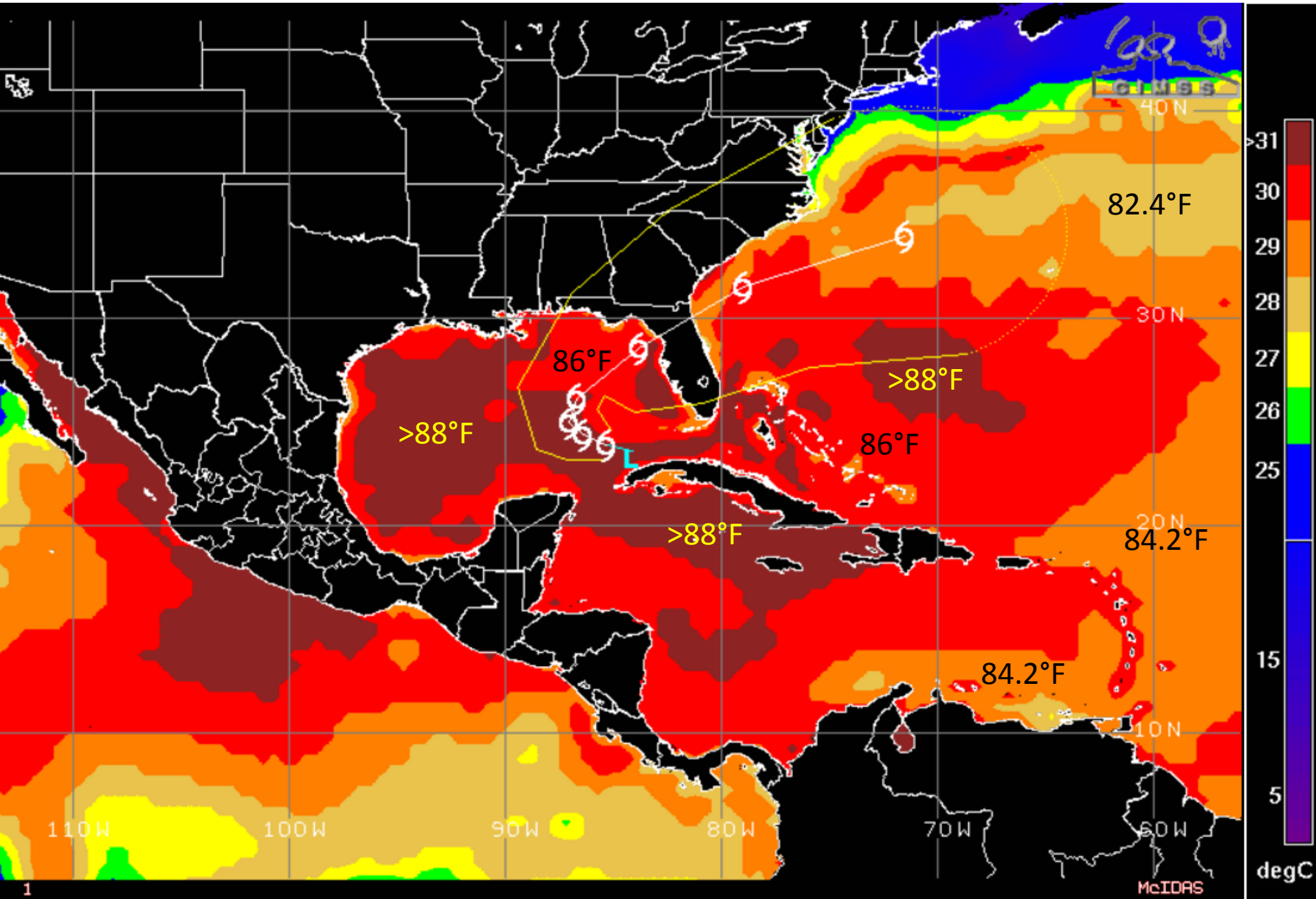
Looking Ahead: Water Vapor Satellite Image



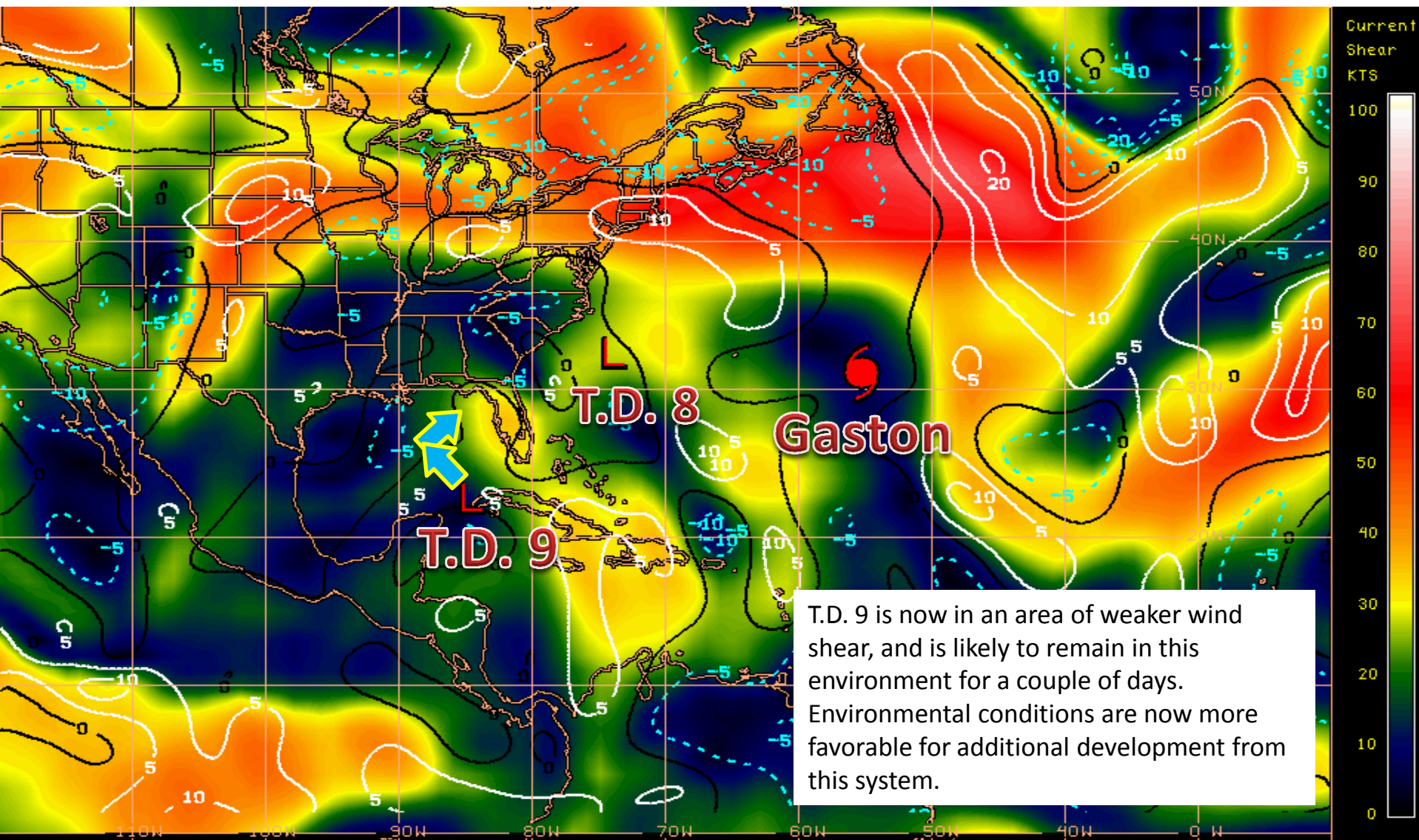
Steering Currents



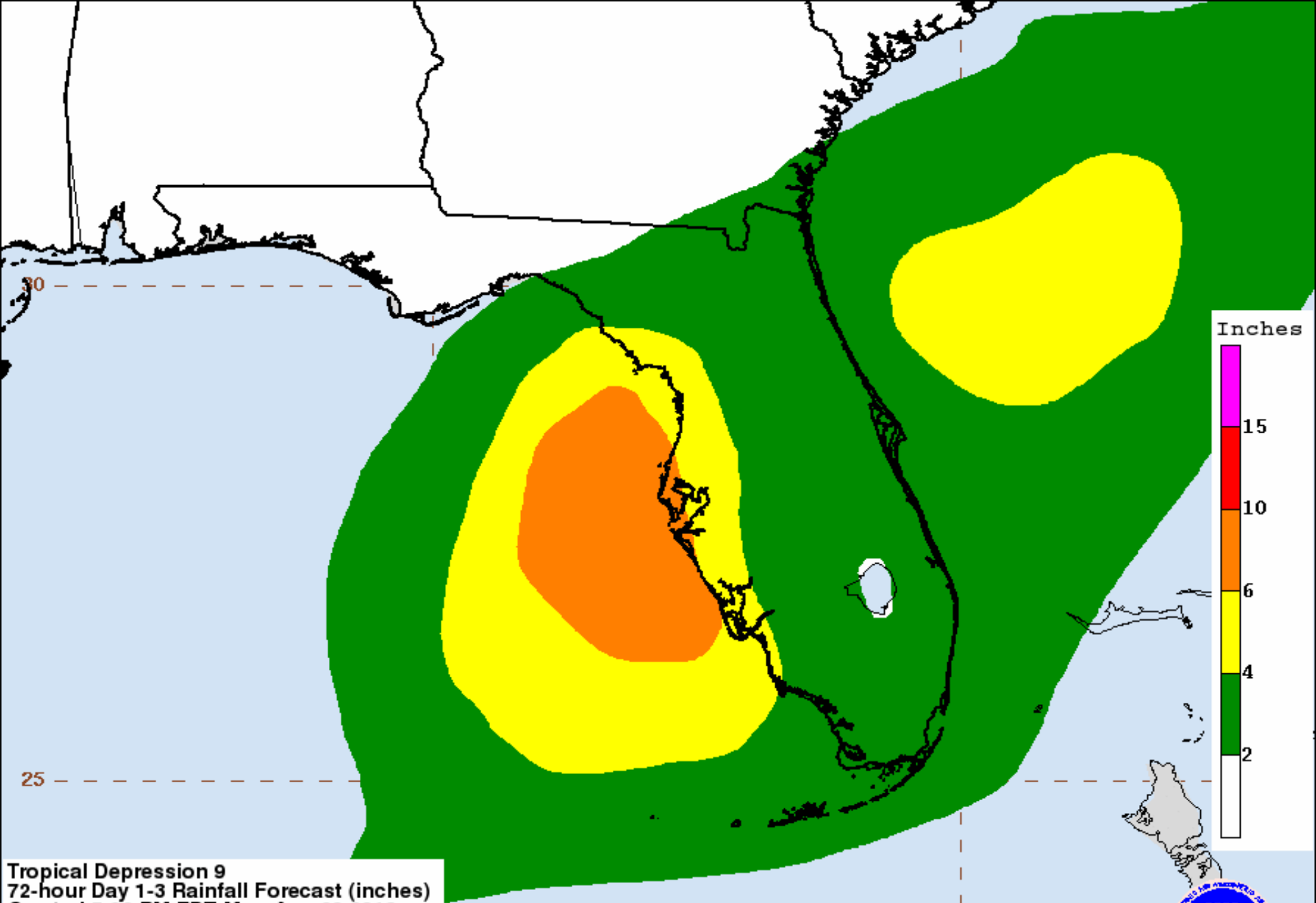
Sea Surface Temperatures near T.D. 9



Current Wind Shear (shaded) and Shear Tendency (contours)



Shear Tendency (KTS) Over Past 24 Hours: Increasing — Decreasing ----

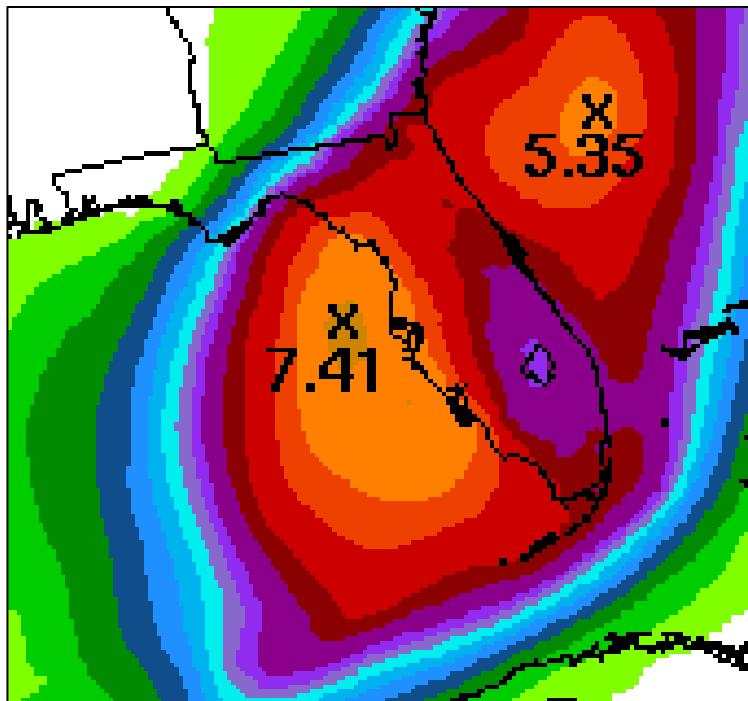


Tropical Depression 9
72-hour Day 1-3 Rainfall Forecast (inches)
Created 5:02 PM EDT Mon Aug 29 2016
Valid 8:00 PM EDT Mon Aug 29 2016
through 8:00 PM EDT Thu Sep 1 2016
NOAA/NWS/NCEP/WPC

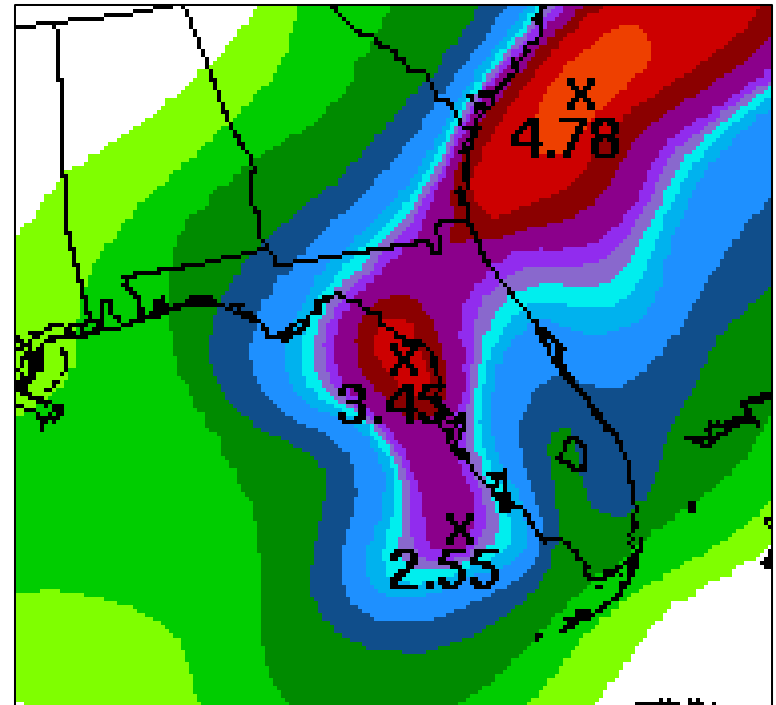
Local point maximum rainfall may be higher than shown.
See the NHC public advisories for the latest tropical cyclone information.

Current Rainfall Forecast

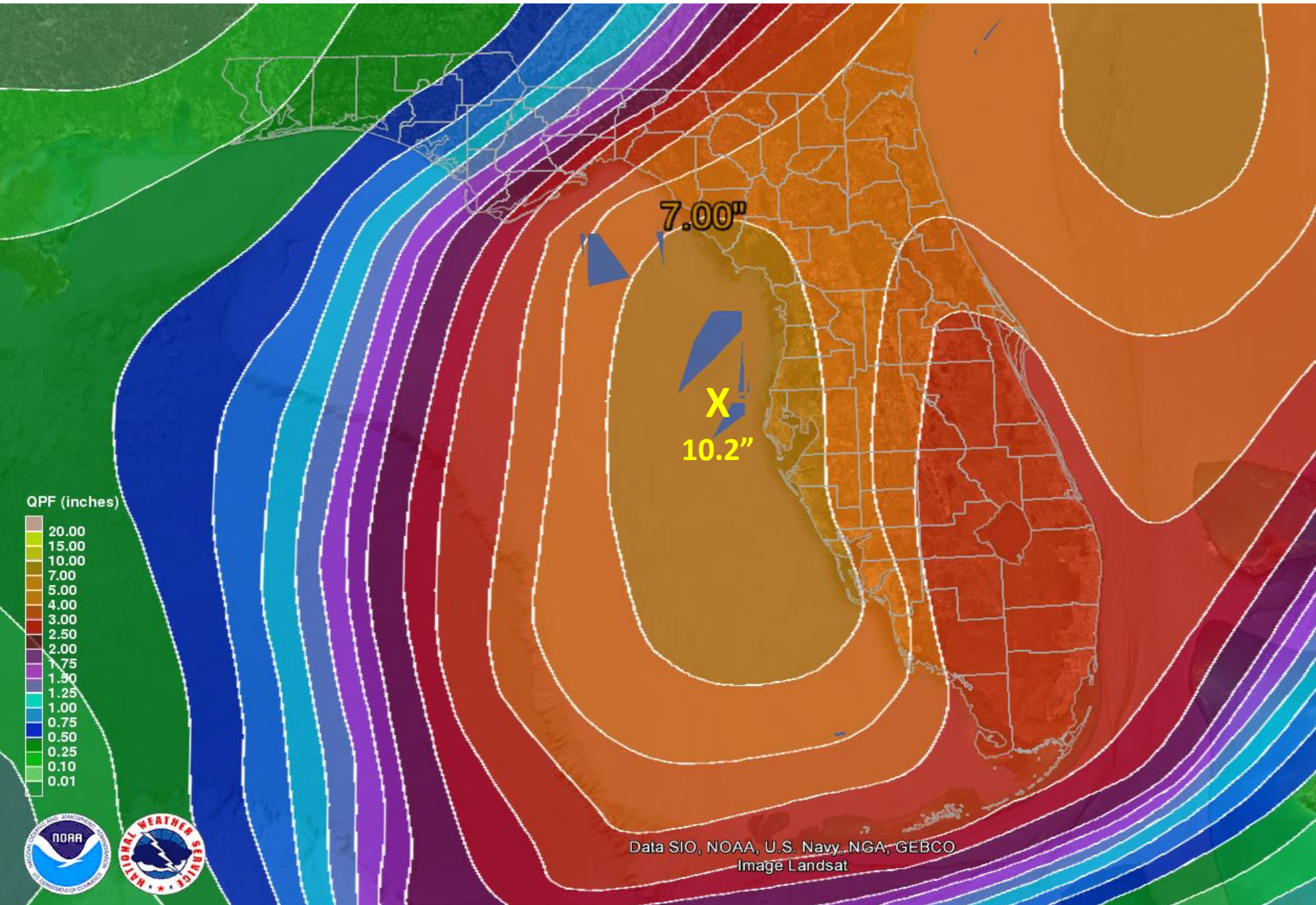
Tuesday-Thursday



Friday-Saturday



7-Day Forecast Rainfall Total (Tue-Mon)



Hurricane Gaston

5 PM EDT Mon Aug 29 2016

Position 31.2 N 55.2 W

Maximum Winds 105 mph

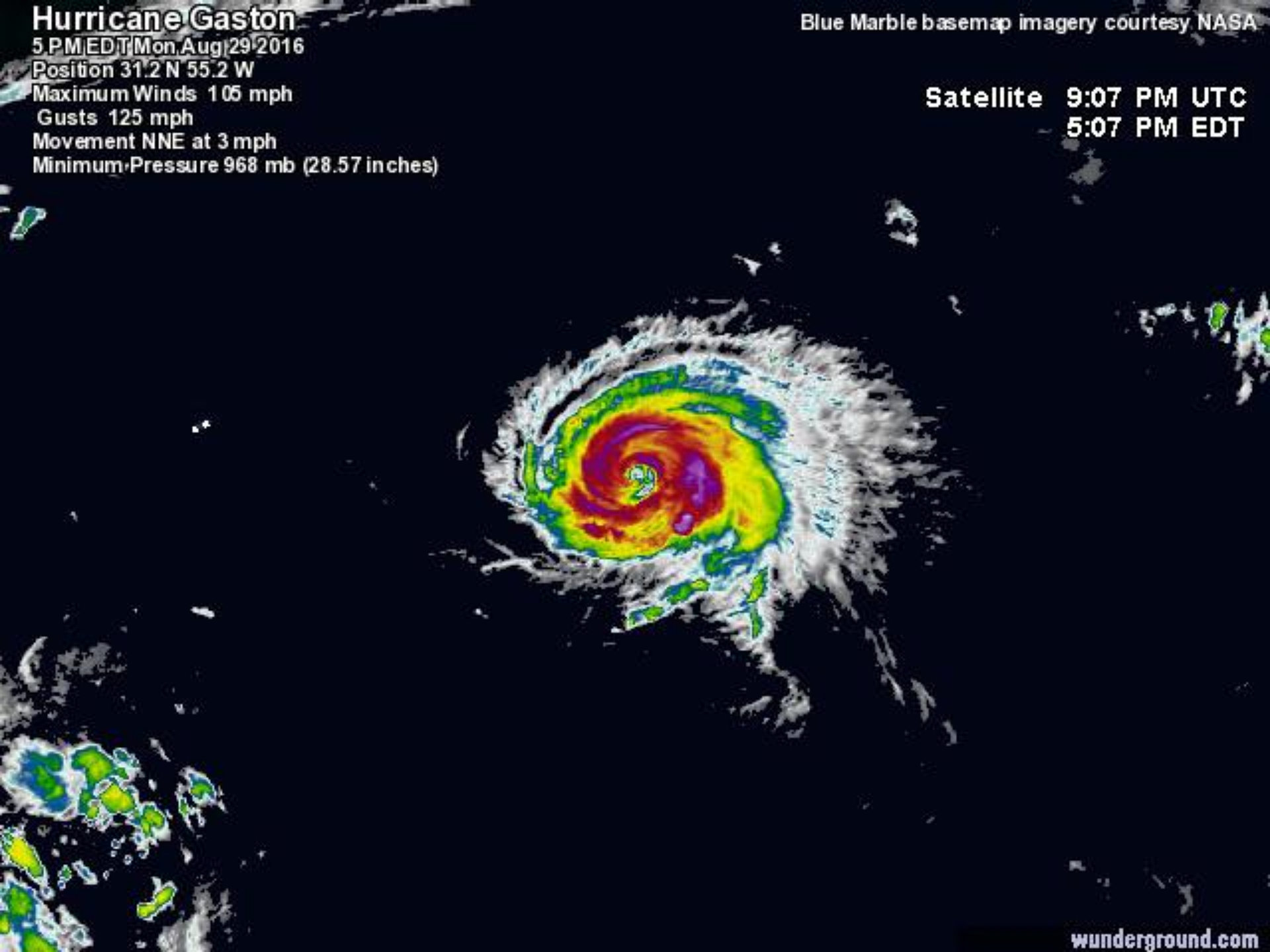
Gusts 125 mph

Movement NNE at 3 mph

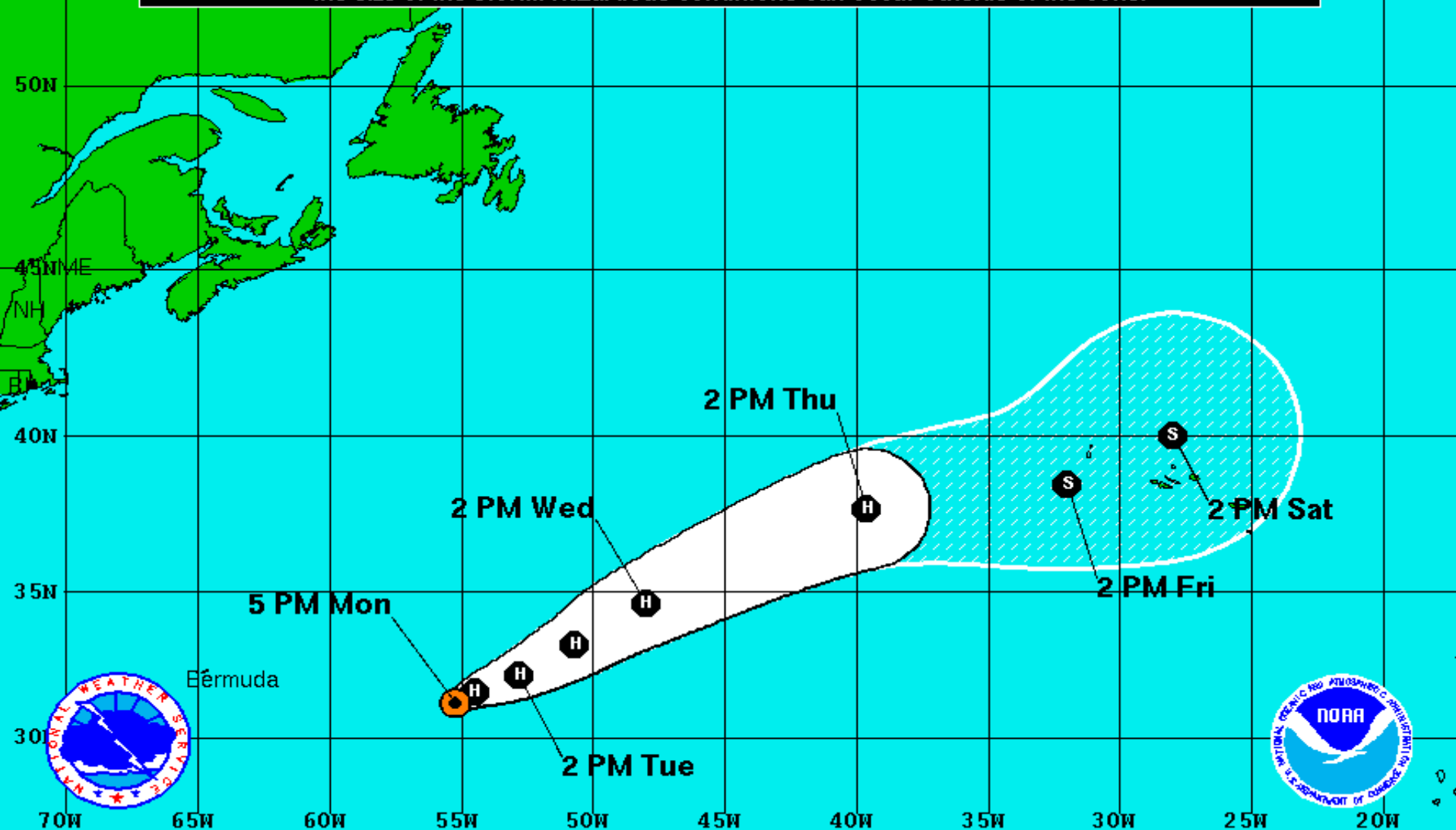
Minimum Pressure 968 mb (28.57 inches)

Blue Marble basemap imagery courtesy NASA

Satellite 9:07 PM UTC
5:07 PM EDT



Note: The cone contains the probable path of the storm center but does not show the size of the storm. Hazardous conditions can occur outside of the cone.



Hurricane Gaston

Monday August 29, 2016

5 PM EDT Advisory 29

NWS National Hurricane Center

Current Information:

Center Location 31.2 N 55.2 W
Max Sustained Wind 105 mph
Movement NNE at 3 mph

Forecast Positions:

● Tropical Cyclone ○ Post-Tropical
Sustained Winds: D < 39 mph
S 39-73 mph H 74-110 mph M > 110mph

Potential Track Area:

Day 1-3 Day 4-5

Watches:

Hurricane Trop.Storm

Warnings:

Hurricane Trop.Storm

Tropical Depression Eight

2 PM EDT Mon Aug 29 2016

Position 33.4 N 73.8 W

Maximum Winds 35 mph

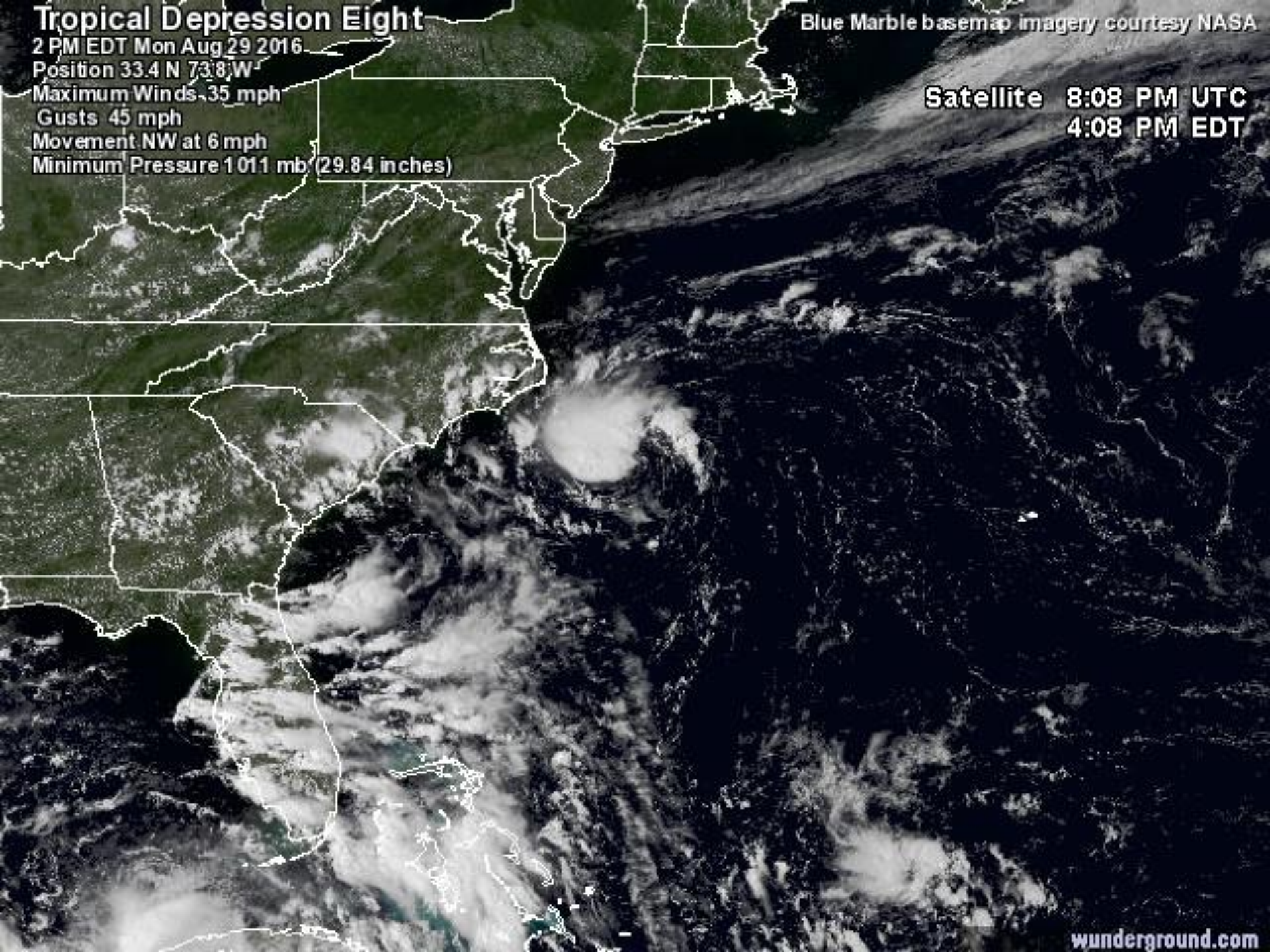
Gusts 45 mph

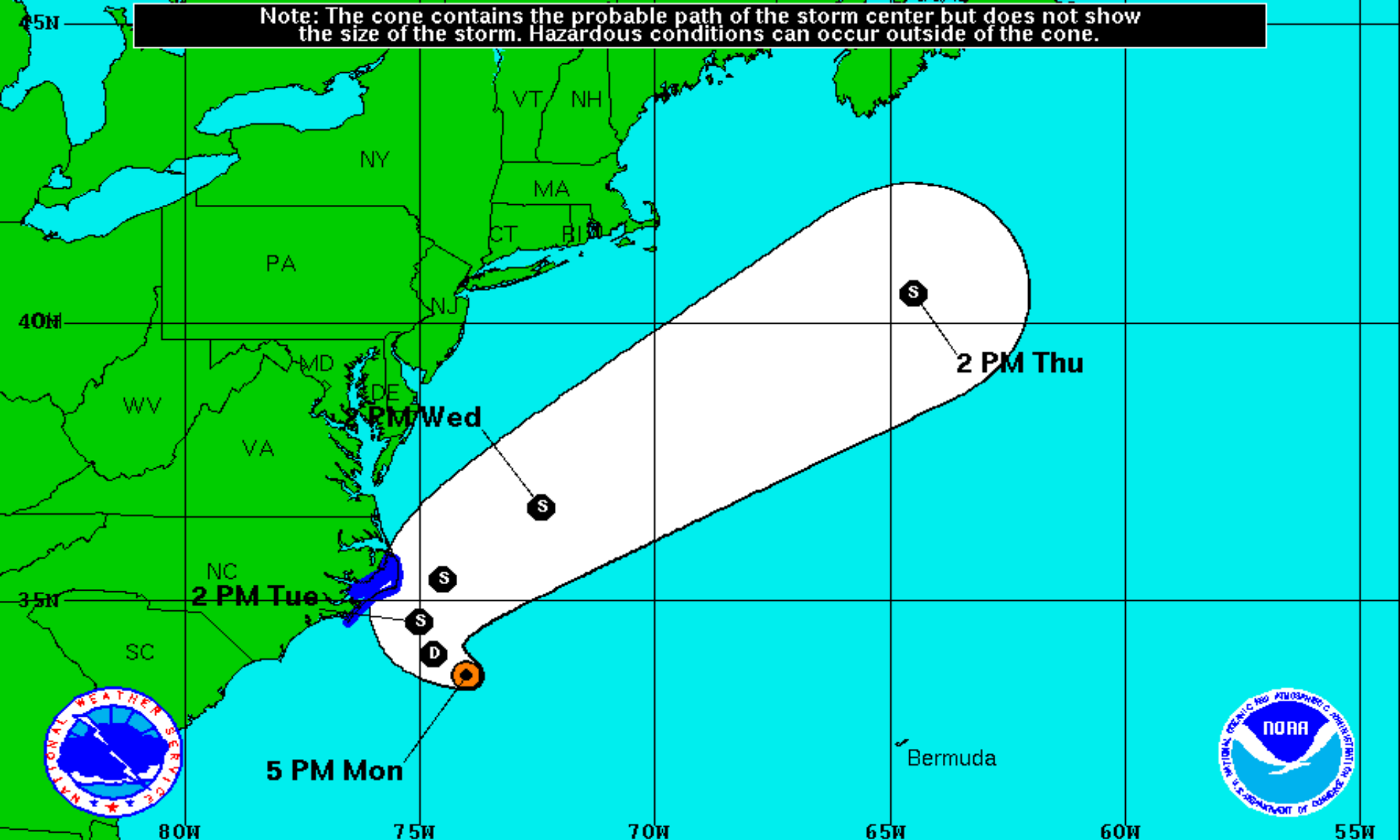
Movement NW at 6 mph

Minimum Pressure 1011 mb (29.84 inches)

Blue Marble basemap imagery courtesy NASA

Satellite 8:08 PM UTC
4:08 PM EDT





Tropical Depression Eight

Monday August 29, 2016

5 PM EDT Advisory 6

NWS National Hurricane Center

Current Information:

Center Location 33.6 N 74.0 W

Max Sustained Wind 35 mph

Movement NW at 6 mph

Forecast Positions:

● Tropical Cyclone ○ Post-Tropical

Sustained Winds: D < 39 mph

S 39-73 mph H 74-110 mph M > 110mph

Potential Track Area:

Day 1-3 Day 4-5

Watches:

Hurricane Trop.Storm

Warnings:

Hurricane Trop.Storm

Tropical Depression 9:

- The center of Tropical Depression 9 is located 195 miles west southwest of Key West. The Depression is moving west northwest near 5 mph.
- A turn towards the north-northwest is expected on Tuesday night, followed by a turn toward the north-northeast on Wednesday.
- Some strengthening is forecast during the next 48 hours, and the depression is expected to become a tropical storm by Tuesday.
- Computer models are in agreement that T.D. 9 will sharply curve towards Florida on Wednesday, and likely make landfall along the Big Bend region sometime on Thursday.
- Still, possible impacts may be felt from Tampa to Panama City. The main impacts would be flash flooding from heavy rain, coastal flooding from minor storm surge, isolated tornadoes, and damaging sustained tropical storm force winds.
- The heaviest precipitation will be on Wednesday and Thursday along the Gulf Coast from Naples north through Tampa and the Nature Coast.
- The next two names on the Atlantic storm list are Hermine and Ian.

Hurricane Gaston:

- Hurricane Gaston has maximum sustained winds of 105 mph and is located 570 miles east of Bermuda.
- The hurricane is expected to move generally to the northeast or east-northeast at an increasing forward speed for the next couple of days.

Tropical Depression 8:

- Tropical Depression 8 is located 140 miles southeast of Cape Hatteras, NC with maximum sustained winds at 35 mph.
- The depression is moving northwest near 6 mph, this general motion with a slower forward speed is expected later this evening, with a gradual turn toward the north forecast on Tuesday. On the forecast track, the center of the depression will be near the Outer Banks of North Carolina late Tuesday.

Florida Outlook:

- Total rain accumulations of 3 to 7 inches are possible over much of the Florida peninsula through Thursday. Isolated maximum amounts of 10 inches are possible along the west coast of Florida from Naples to Steinhatchee. This rainfall may cause flooding and flash flooding.
- Gusts to tropical storm force are possible in a few squalls as the storm approaches the state on Tuesday and Wednesday.
- Strong life threatening rip currents are likely along all east coast beaches for the next few days. Rip currents will likely spread to the Gulf Coast as the storm approaches and ocean swells increase.
- It is likely that some areas of the Gulf Coast will experience 2-4 feet of storm surge, and we expect the storm to come ashore during high tide, which will increase the amount of water that comes ashore in some areas.
- Impacts will likely begin affecting Florida Wednesday night and last through Friday.
- Tropical storm watches and warnings (and possibly a hurricane watch) are likely to be issued Tuesday morning – as the storm will be 48 hours from landfall.
- Hurricane Gaston and Tropical Depression 8 do not pose a threat to Florida.

Another briefing packet will be issued on Tuesday morning. For more information on this system, please visit the NHC website at www.nhc.noaa.gov



TROPICAL UPDATE

Created by:

Kevin Rodriguez, Deputy State Meteorologist

Kevin.Rodriguez@em.myflorida.com

State Meteorological Support Unit

Florida Division of Emergency
Management