



TROPICAL UPDATE

8 AM EDT

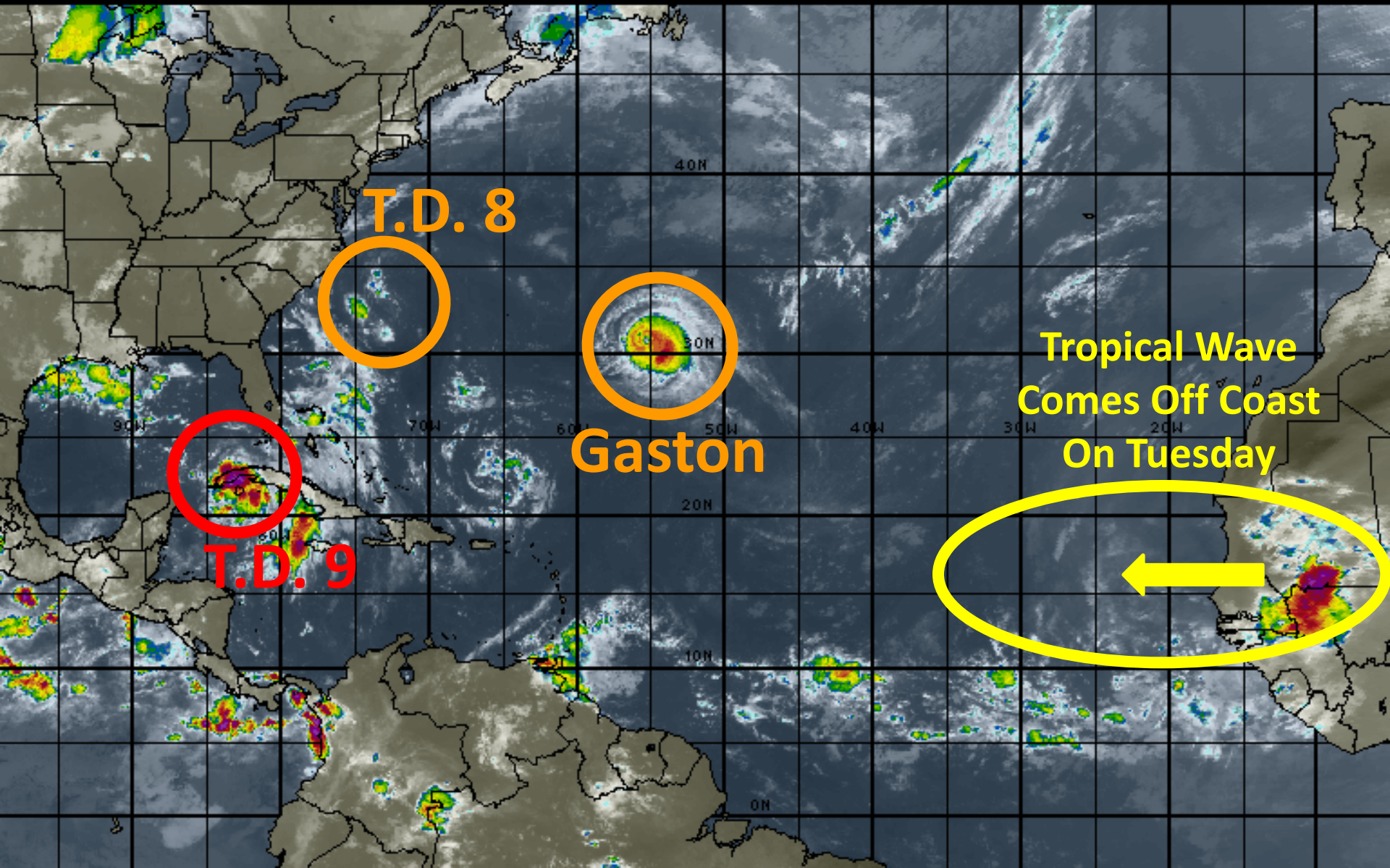
Monday, August 29, 2016

T.D. #9, T.D. #8, & Hurricane Gaston

This update is intended for government and emergency response officials, and is provided for informational and situational awareness purposes only. Forecast conditions are subject to change based on a variety of environmental factors. For additional information, or for any life safety concerns with an active weather event please contact your County Emergency Management or Public Safety Office, local National Weather Service forecast office or visit the National Hurricane Center website at www.nhc.noaa.gov.

Atlantic Basin Satellite Image

12:00 29-AUG-2016 GMT ©Copyright WSI Corporation <http://www.wsi.com>





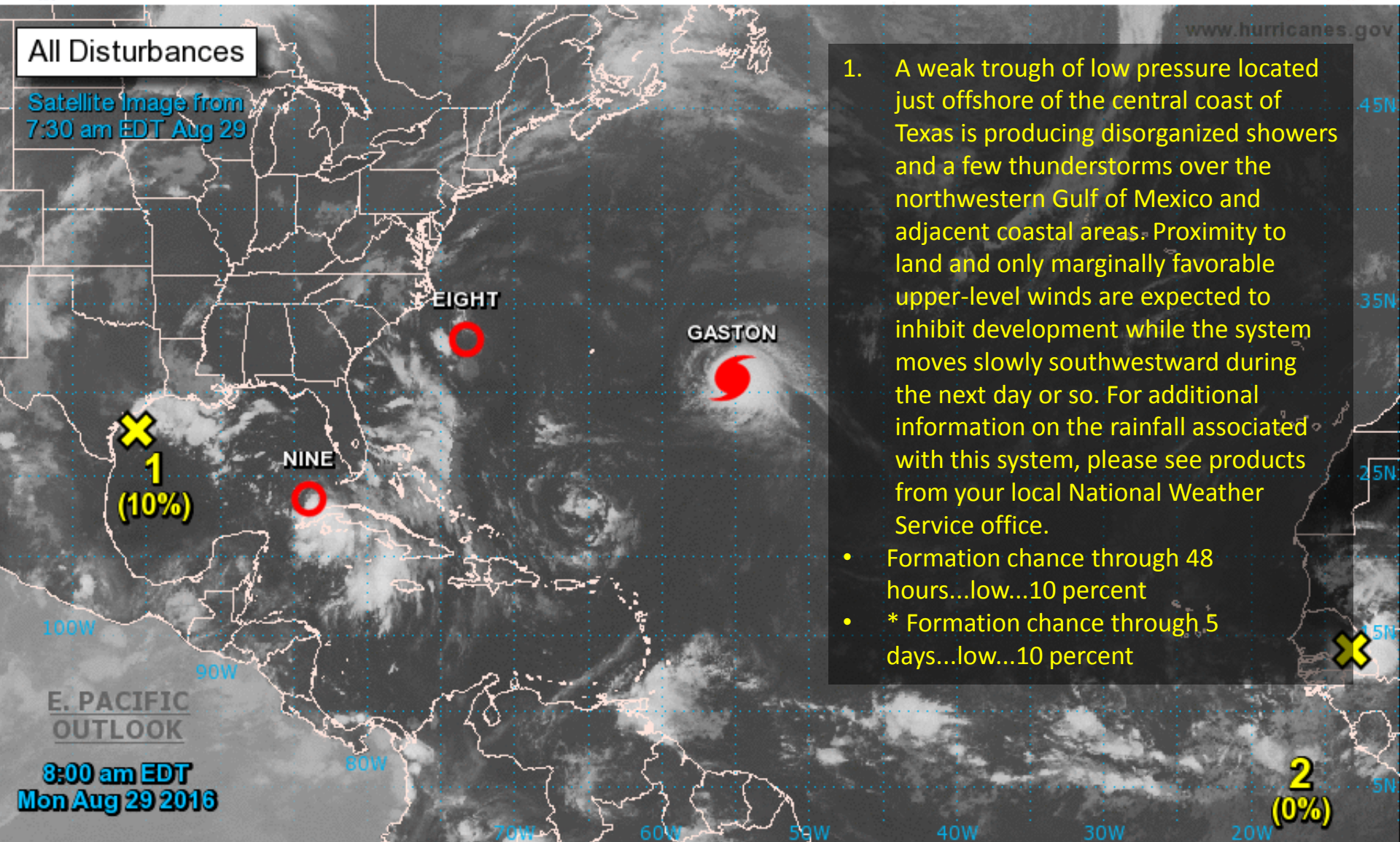
Two-Day Graphical Tropical Weather Outlook

National Hurricane Center Miami, Florida



All Disturbances

Satellite Image from
7:30 am EDT Aug 29



1. A weak trough of low pressure located just offshore of the central coast of Texas is producing disorganized showers and a few thunderstorms over the northwestern Gulf of Mexico and adjacent coastal areas. Proximity to land and only marginally favorable upper-level winds are expected to inhibit development while the system moves slowly southwestward during the next day or so. For additional information on the rainfall associated with this system, please see products from your local National Weather Service office.
- Formation chance through 48 hours...low...10 percent
 - * Formation chance through 5 days...low...10 percent

Current Disturbances and Two-Day Cyclone Formation Chance: < 40% 40-60% > 60%

Tropical or Sub-Tropical Cyclone: Depression Storm Hurricane

Post-Tropical Cyclone Remnants



Five-Day Graphical Tropical Weather Outlook

National Hurricane Center Miami, Florida



www.hurricanes.gov

All Disturbances

Note: Shaded areas show where a tropical cyclone is likely to develop within the given time frame.

It DOES NOT show what the likely forecast track of a tropical cyclone will be once it forms!

A tropical wave is forecast to come off the coast of Africa on Tuesday, and will likely be deemed as Invest 92L.

10%

50%

8:00 am EDT
Mon Aug 29 2016

100°W 90°W 80°W 70°W 60°W 50°W 40°W 30°W 20°W

Tropical Cyclone Formation Potential for the Five-Day Period Ending at 8:00 am EDT Sat Sep 3 2016

Chance of Cyclone Formation in Five Days: ■ Low < 40% ■ Medium 40-60% ■ High > 60%

X indicates current disturbance location; shading indicates potential formation area.

Tropical Depression Nine

5 AM EDT Mon Aug 29 2016

Position 23.5 N 83.9 W

Maximum Winds 35 mph

Gusts 45 mph

Movement W at 9 mph

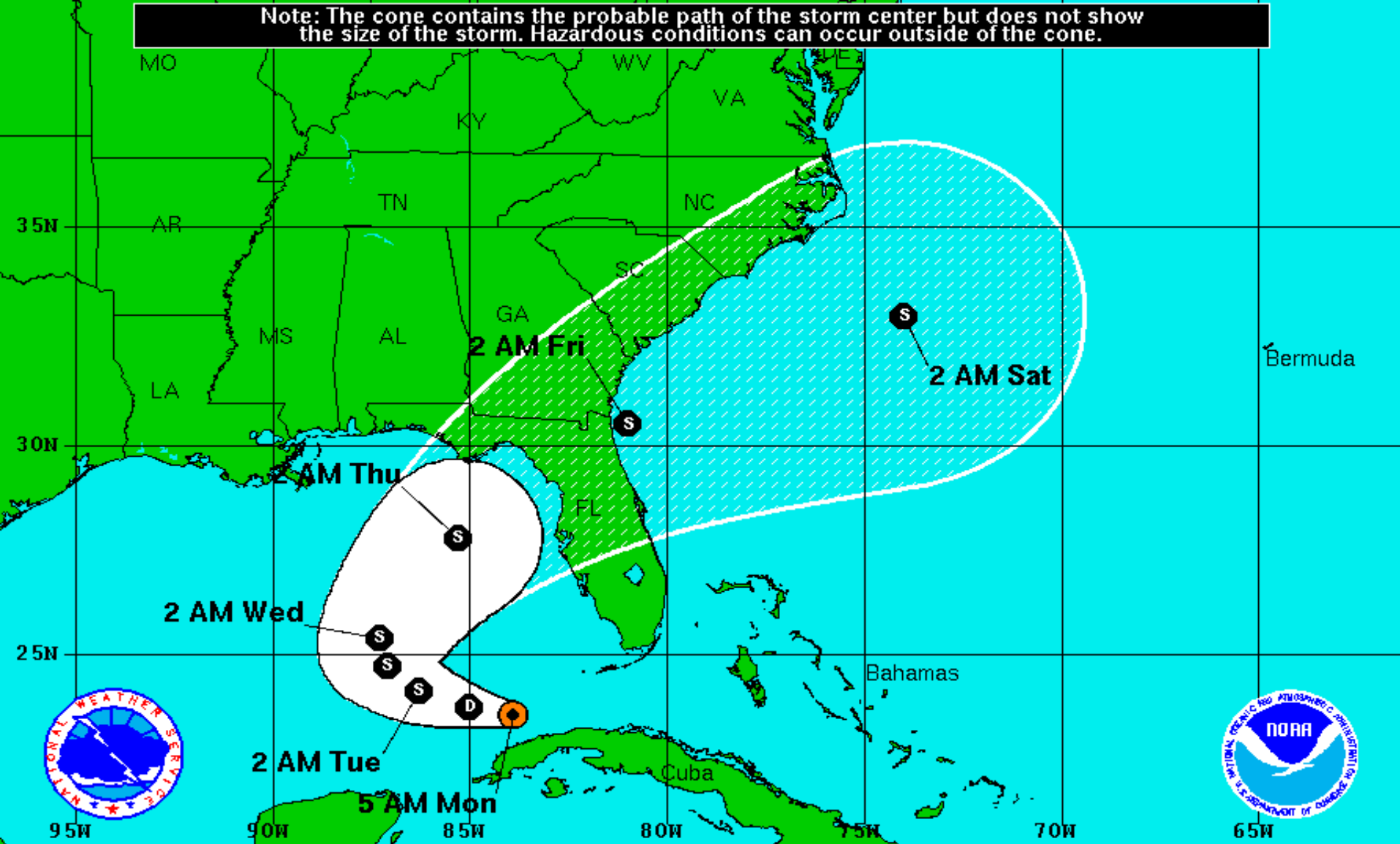
Minimum Pressure 1007 mb (29.73 inches)

Blue Marble basemap imagery courtesy NASA

Satellite 12:10 PM UTC
8:10 AM EDT



Note: The cone contains the probable path of the storm center but does not show the size of the storm. Hazardous conditions can occur outside of the cone.



Tropical Depression Nine

Monday August 29, 2016

5 AM EDT Advisory 3

NWS National Hurricane Center

Current Information:

Center Location 23.5 N 83.9 W

Max Sustained Wind 35 mph

Movement W at 9 mph

Forecast Positions:

● Tropical Cyclone ○ Post-Tropical

Sustained Winds: D < 39 mph

S 39-73 mph H 74-110 mph M > 110mph

Potential Track Area:

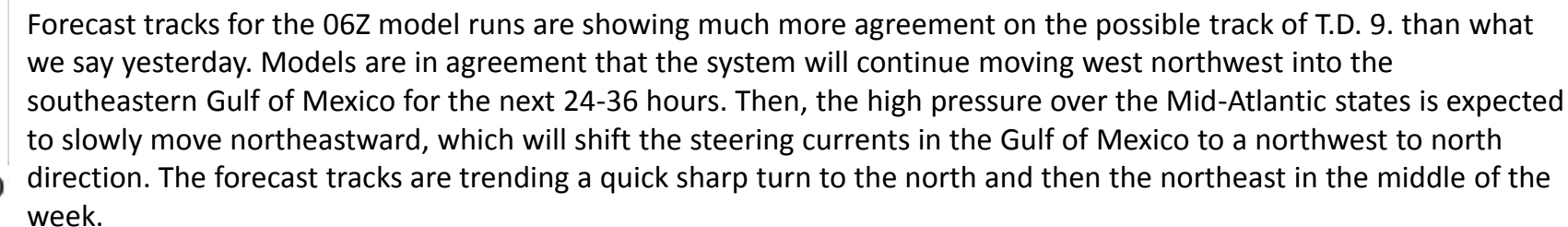
Day 1-3 Day 4-5

Watches:

Hurricane Trop.Storm

Warnings:

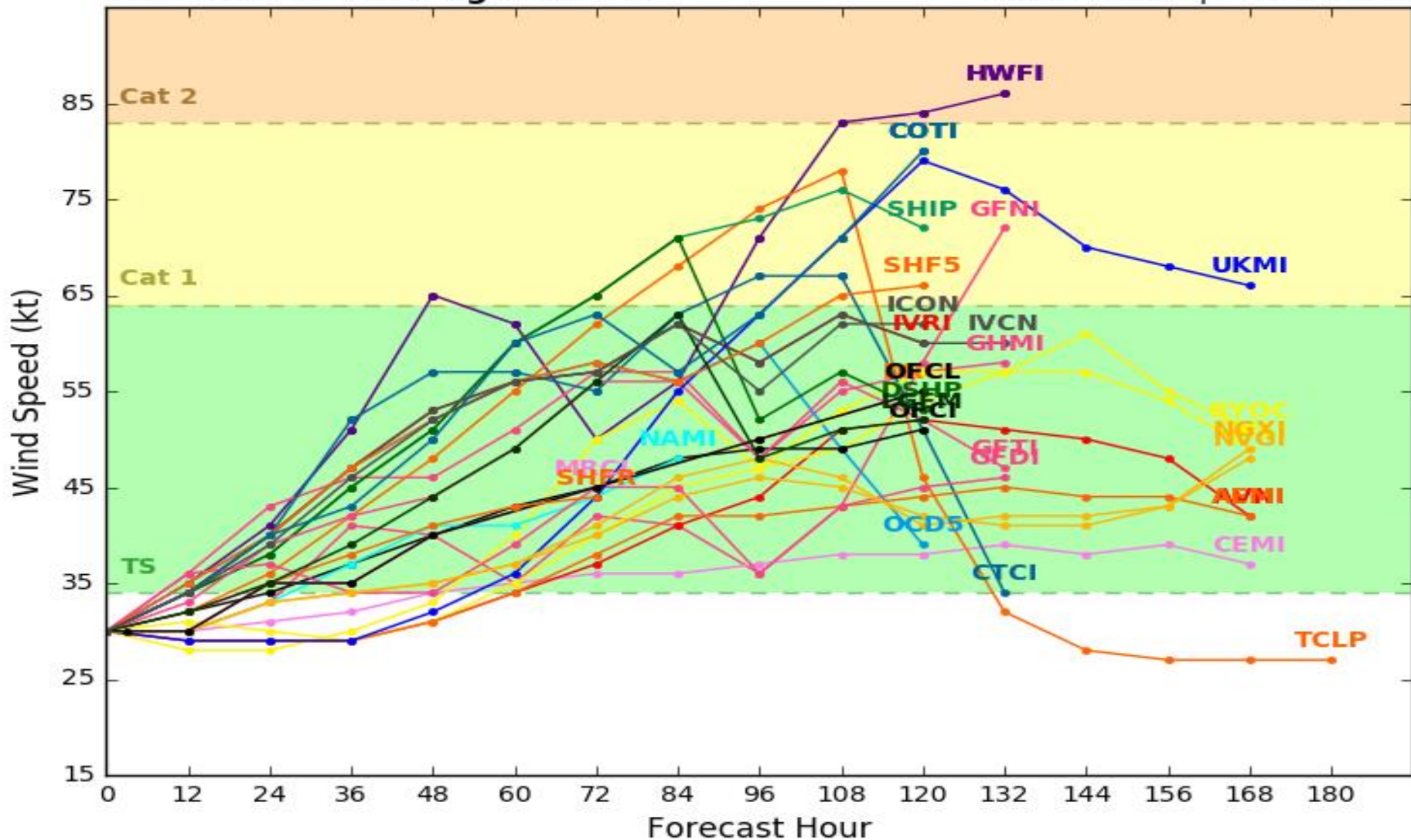
Hurricane Trop.Storm

Levi Cowan - tropicaltidbits.com

Tropical Depression 09L Model Intensity Guidance

Initialized at 06z Aug 29 2016

Levi Cowan - tropicaltidbits.com



Most models are now in agreement that T.D. 9 will at least become a tropical storm, with some of the lesser confidence models having it become a hurricane. **Note:** Statistical models (SHF5, SHIP, DSHP, LGEM) are based on historical relationships between hurricane-specific information, such as the location and time of year, and the behavior of historical hurricanes. Due to their simplicity, statistical models are generally less skillful than dynamical models.

Tropical Storm Wind Probabilities (34Kt):

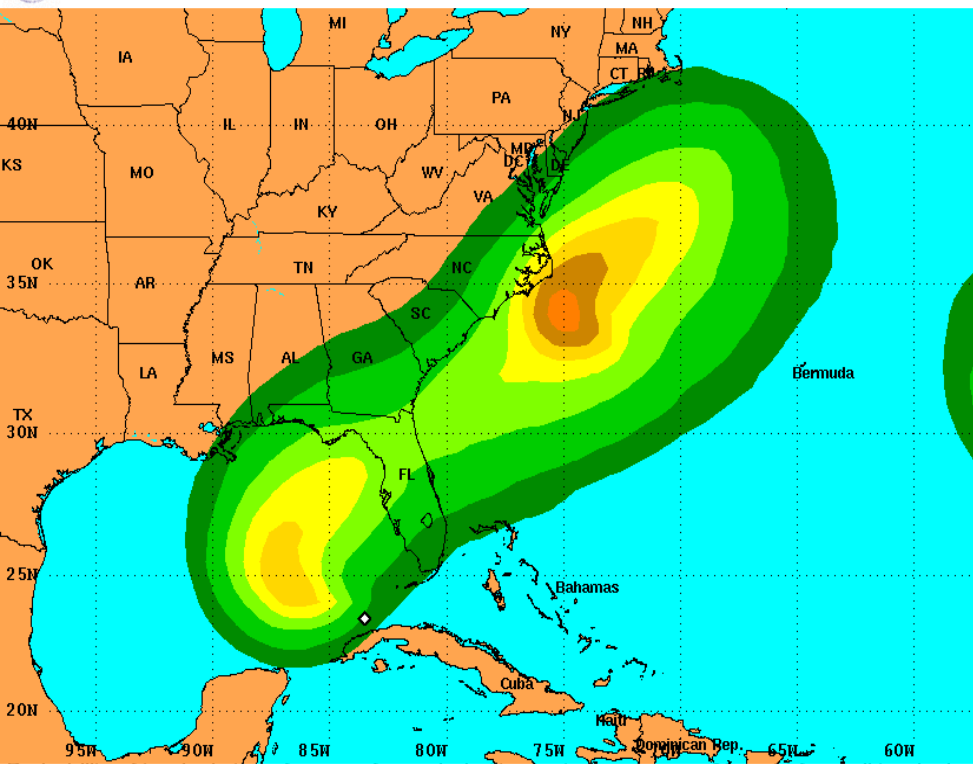
Pensacola	10%
Panama City	21%
Apalachicola	26%
Cedar Key	30%
Gainesville	25%
Tampa	26%
Ft. Myers	16%
Jacksonville	23%

Tropical Storm Wind Probabilities (50Kt):

Pensacola	0%
Panama City	5%
Apalachicola	7%
Cedar Key	6%
Gainesville	5%
Tampa	4%
Ft. Myers	0%
Jacksonville	5%

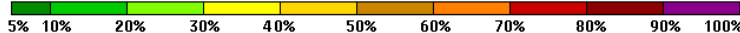


Tropical Storm Force Wind Speed Probabilities
For the 120 hours (5 days) from 2 AM EDT Mon Aug 29 to 2 AM EDT Sat Sep 3

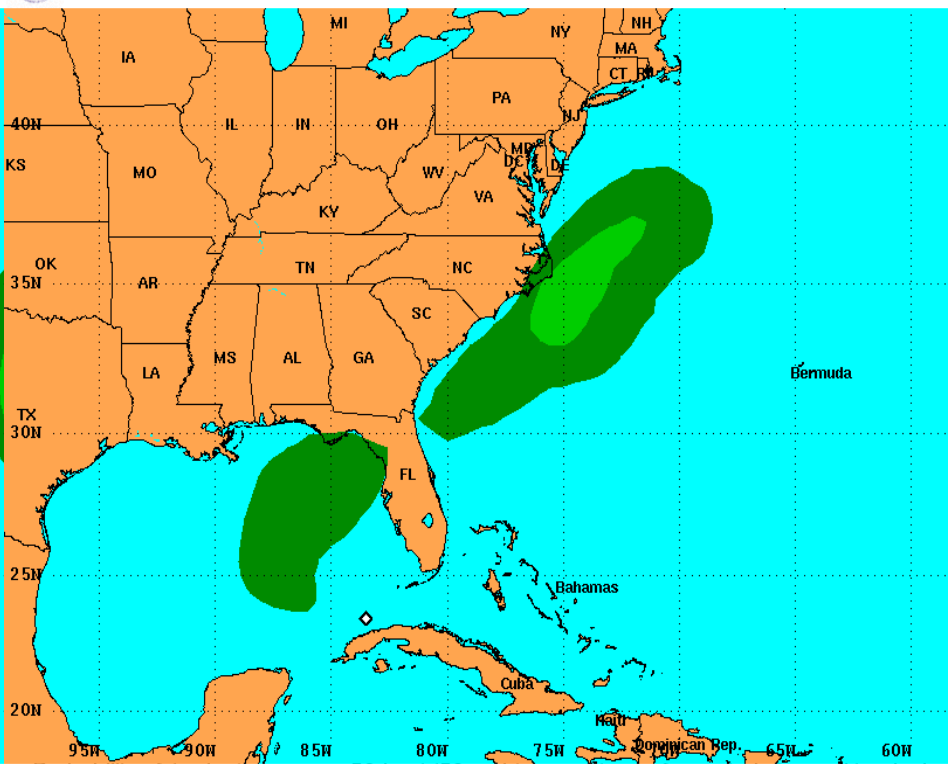


Probability of tropical storm force surface winds (1-minute average ≥ 39 mph) from all tropical cyclones

◇ indicates TROPICAL DEPRESSION NINE center location at 2 AM EDT Mon Aug 29 2016 (Forecast/Advisory #3)



50-knot Wind Speed Probabilities
For the 120 hours (5 days) from 2 AM EDT Mon Aug 29 to 2 AM EDT Sat Sep 3

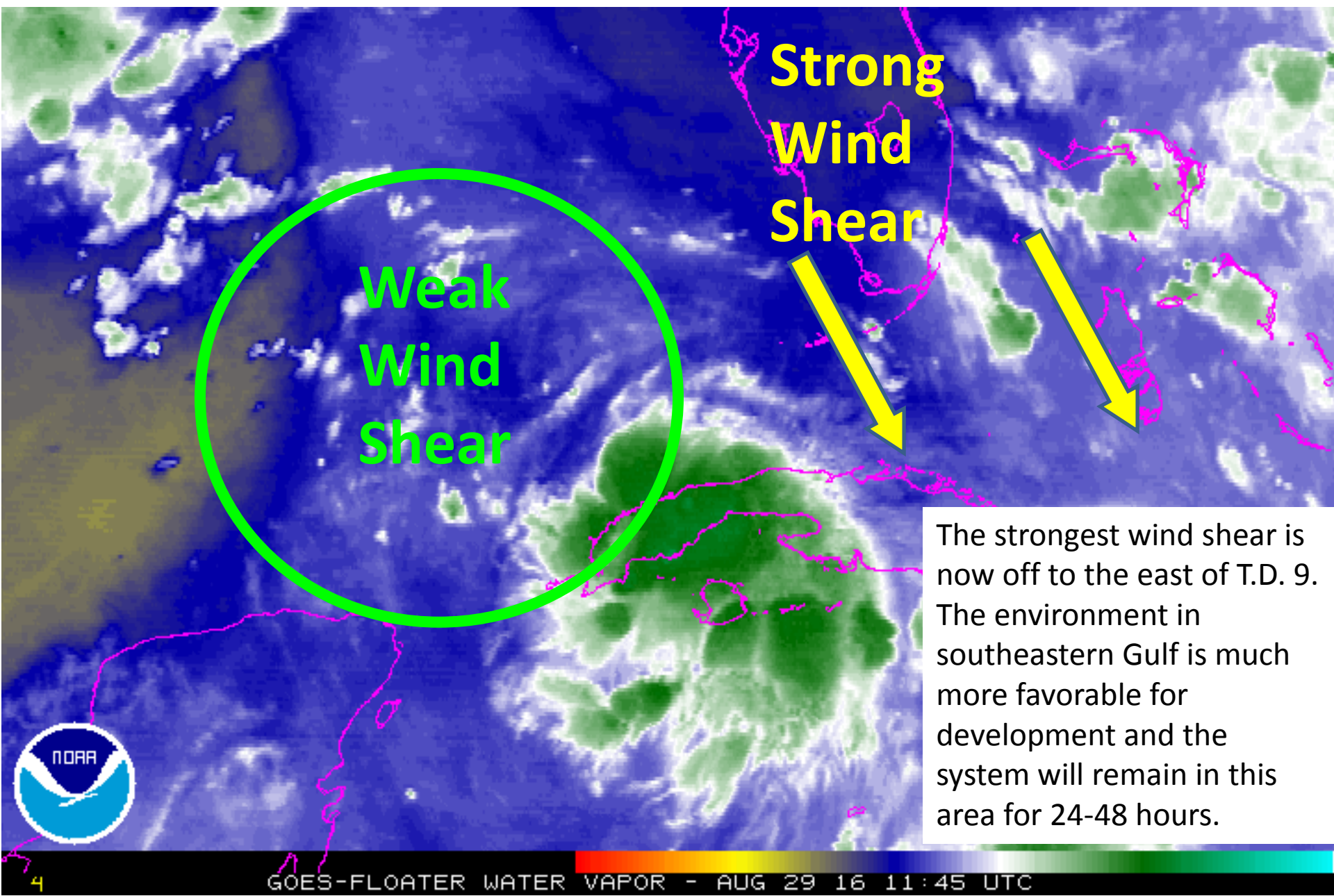


Probability of 1-minute average 50-knot (58 mph) or greater surface winds from all tropical cyclones

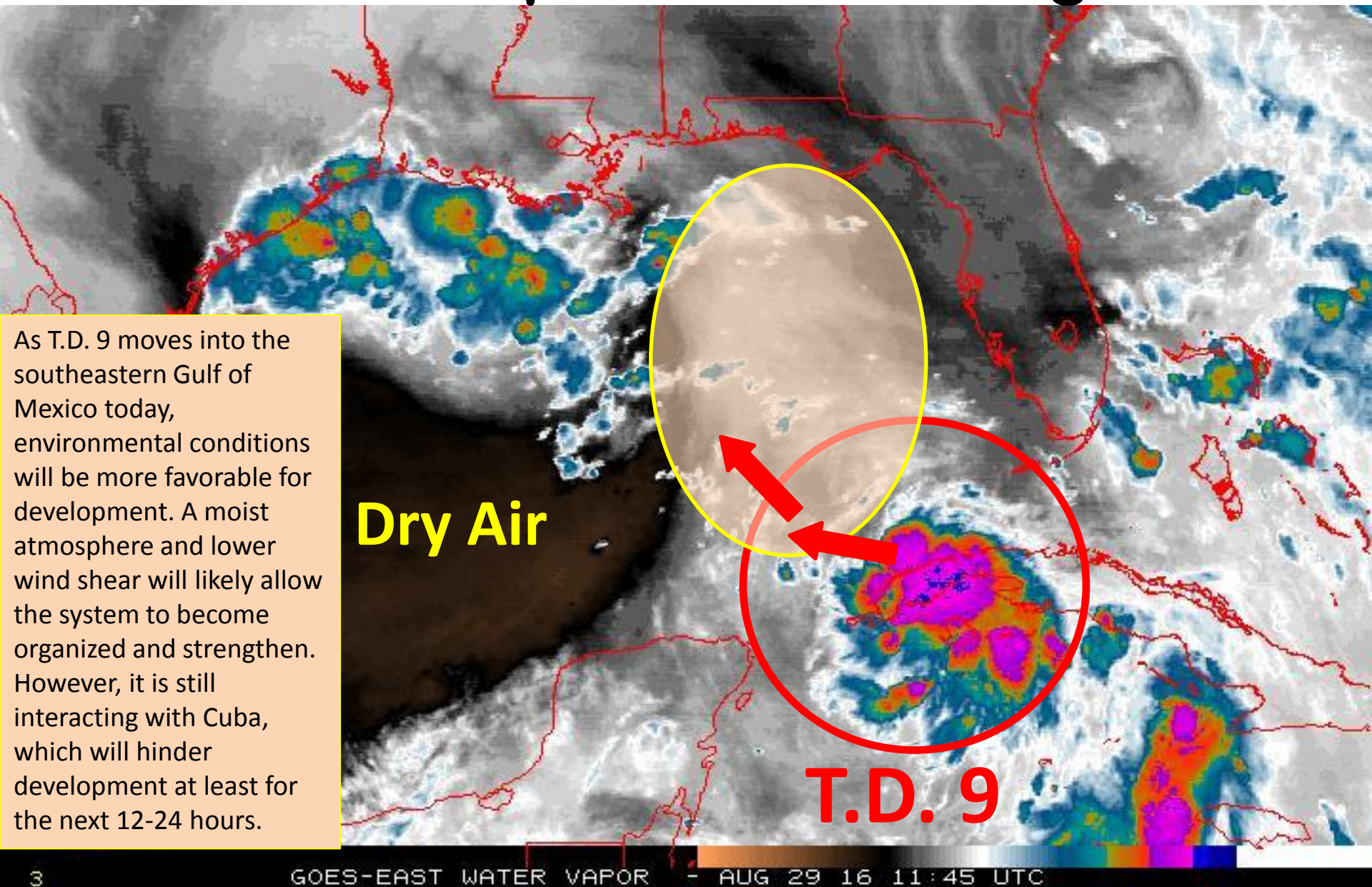
◇ indicates TROPICAL DEPRESSION NINE center location at 2 AM EDT Mon Aug 29 2016 (Forecast/Advisory #3)



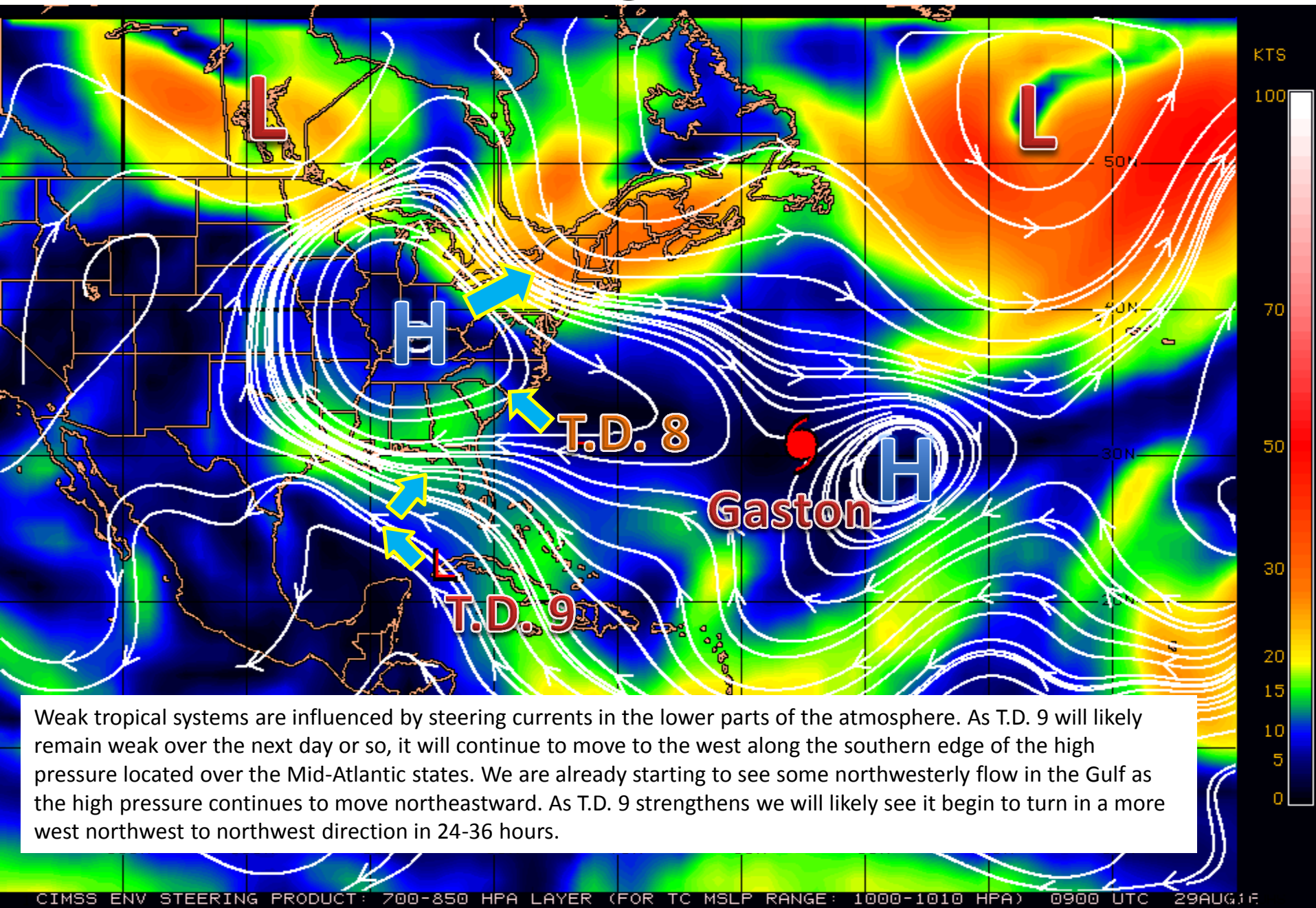
T.D. 9 Water Vapor Image



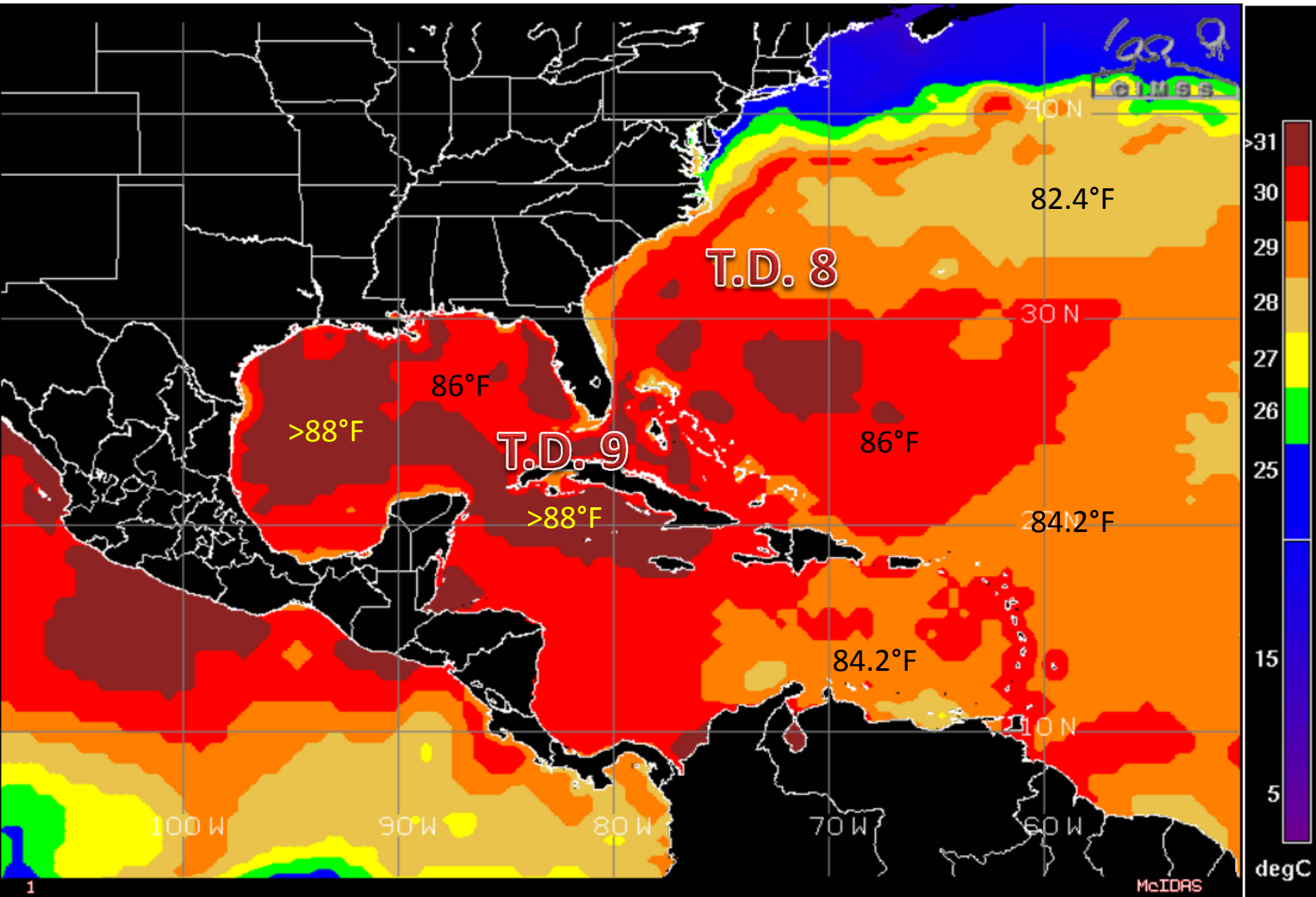
Looking Ahead: Water Vapor Satellite Image



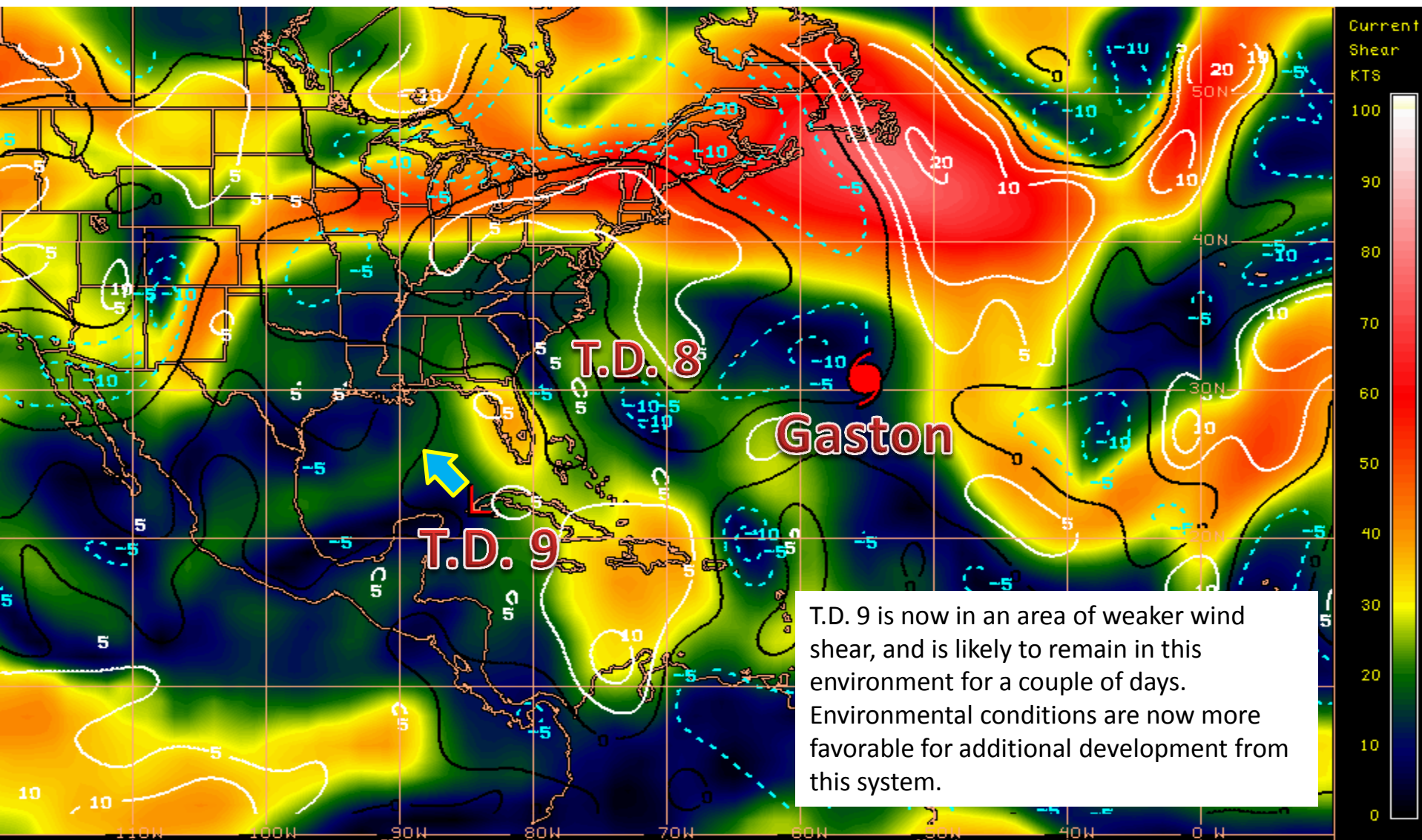
Steering Currents

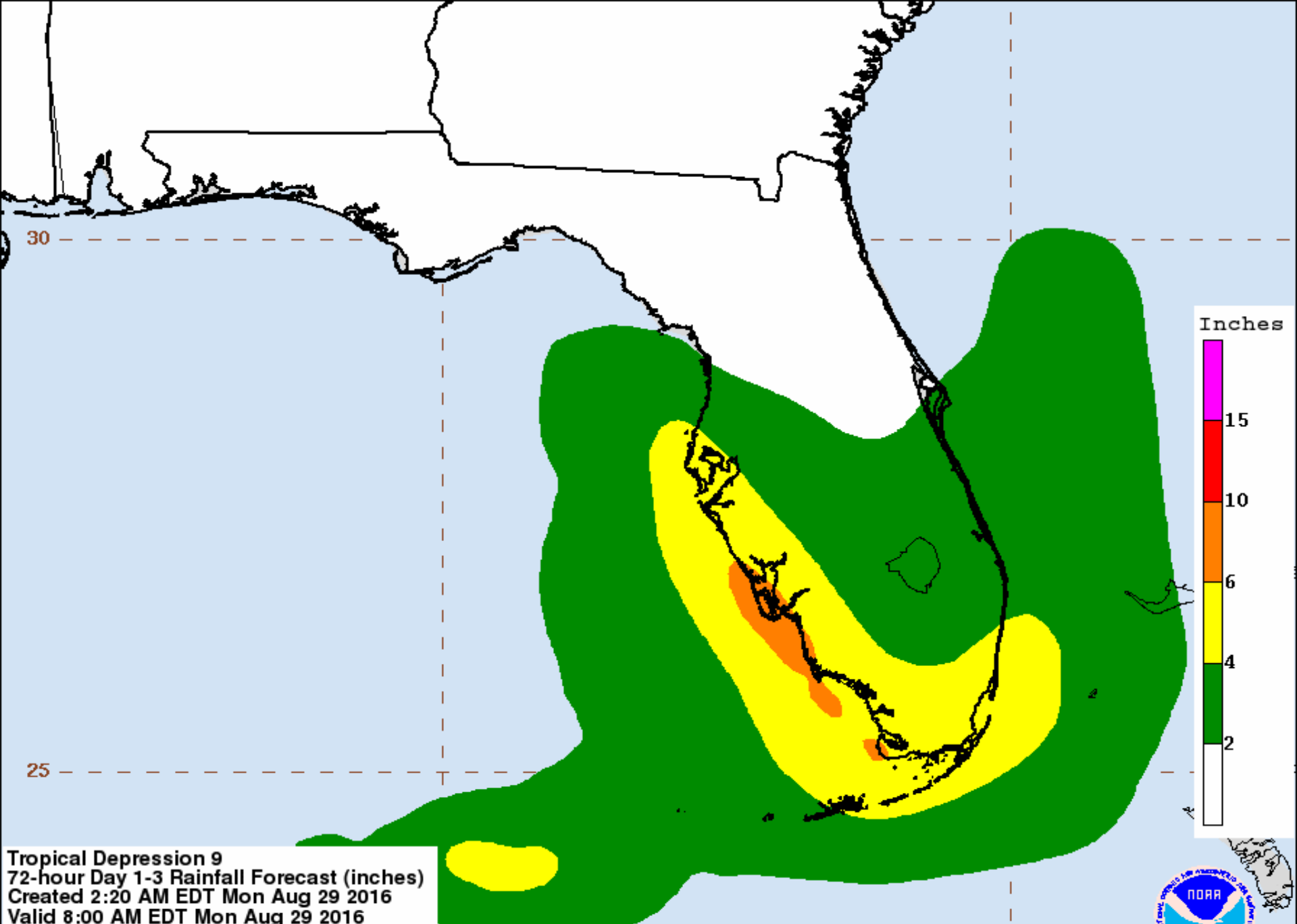


Sea Surface Temperatures



Current Wind Shear (shaded) and Shear Tendency (contours)



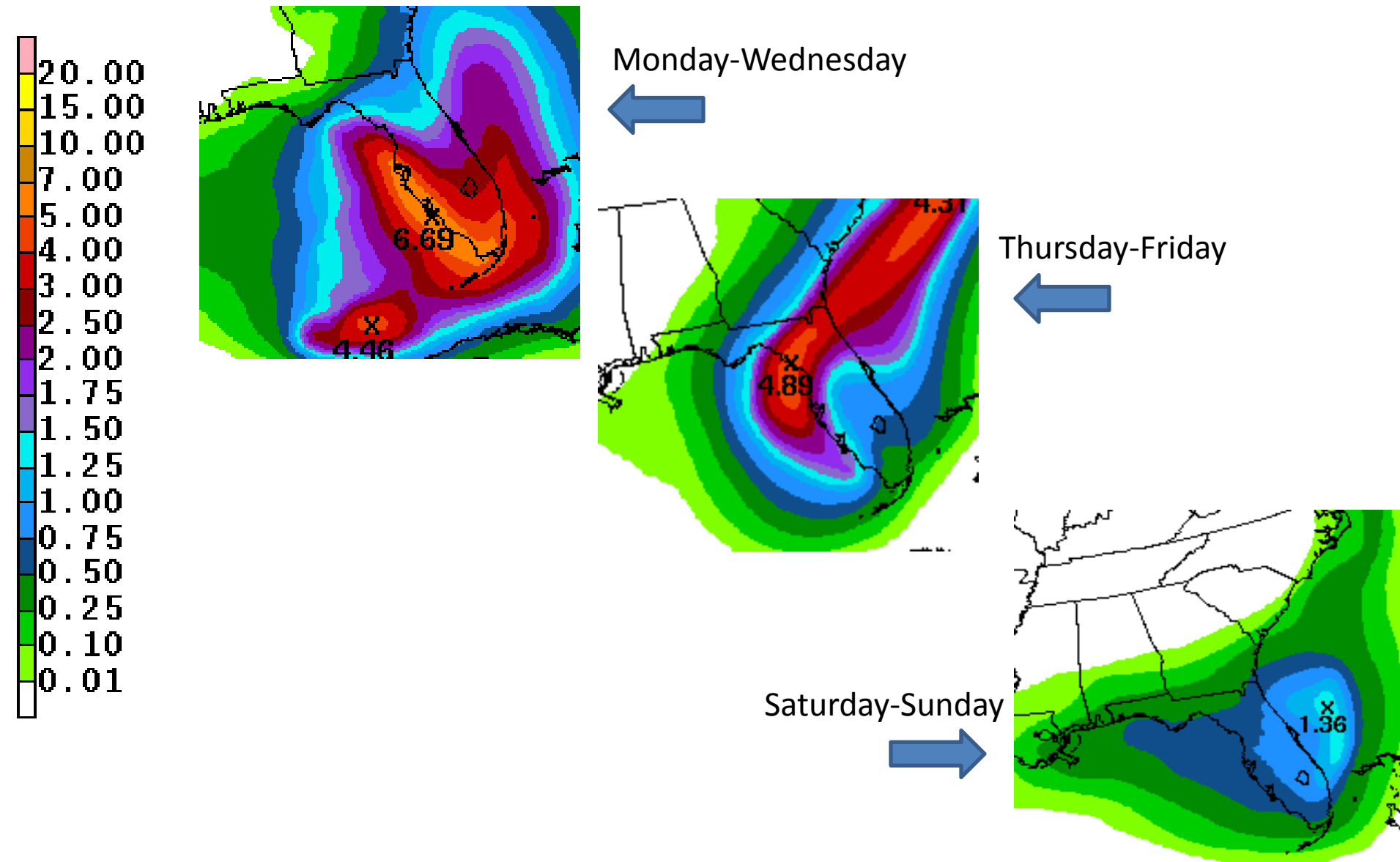


Tropical Depression 9
72-hour Day 1-3 Rainfall Forecast (inches)
Created 2:20 AM EDT Mon Aug 29 2016
Valid 8:00 AM EDT Mon Aug 29 2016
through 8:00 AM EDT Thu Sep 1 2016
NOAA/NWS/NCEP/WPC

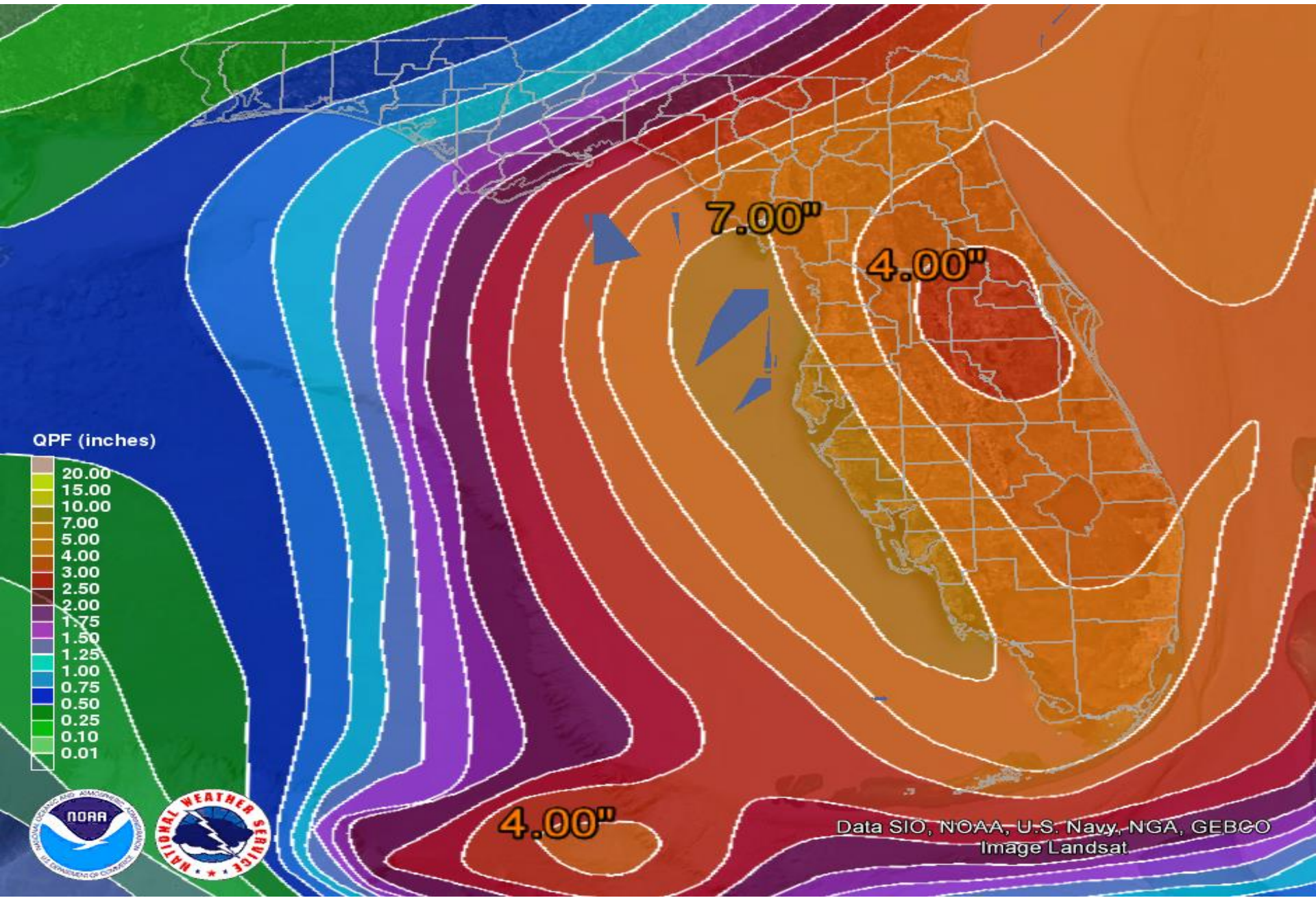
Local point maximum rainfall may be higher than shown.
See the NHC public advisories for the latest tropical cyclone information.



Current Rainfall Forecast



7-Day Forecast Rainfall Total (Sun-Sat)



Hurricane Gaston

5 AM EDT Mon Aug 29 2016

Position 30.8 N 55.2 W

Maximum Winds 115 mph

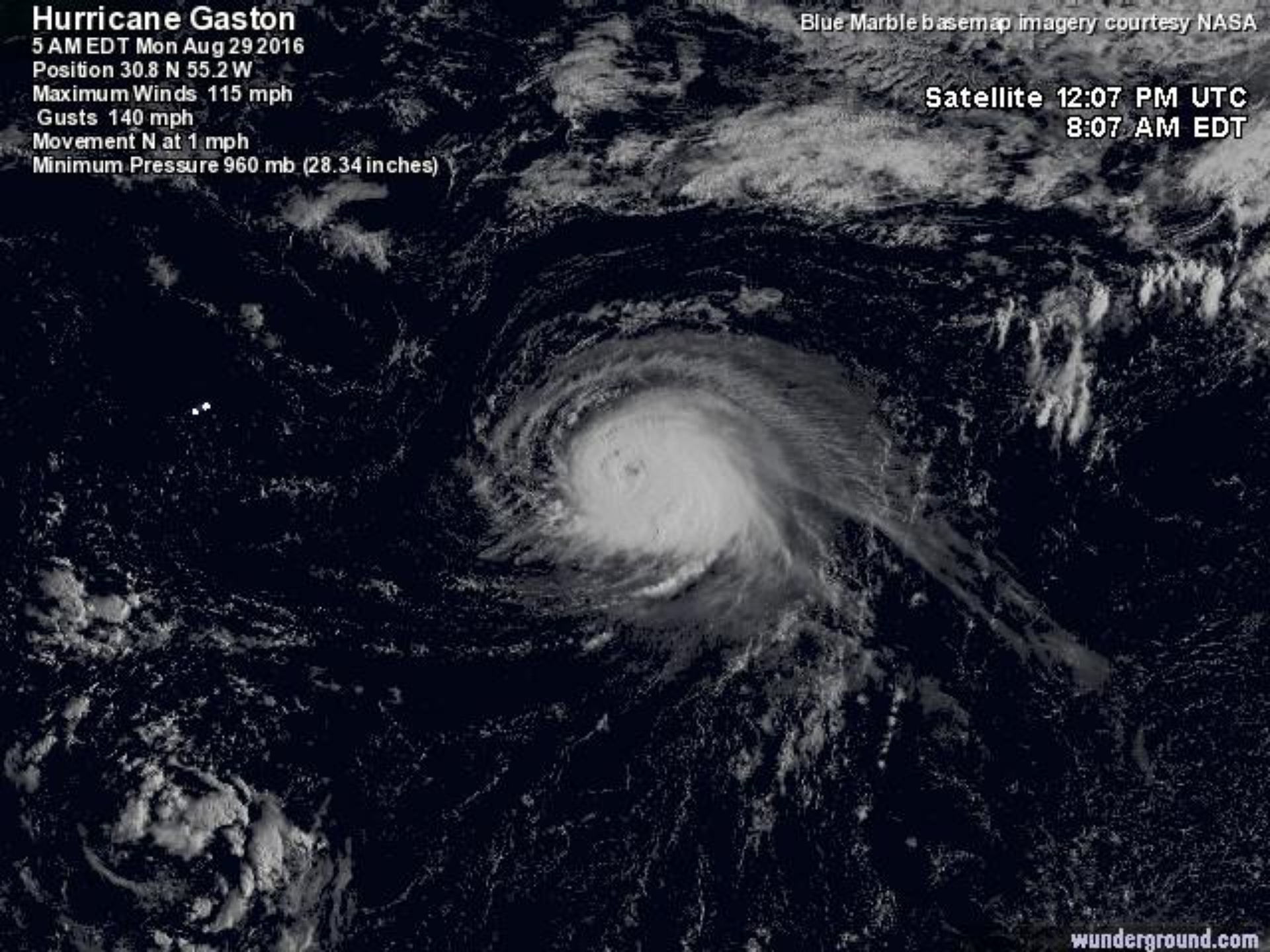
Gusts 140 mph

Movement N at 1 mph

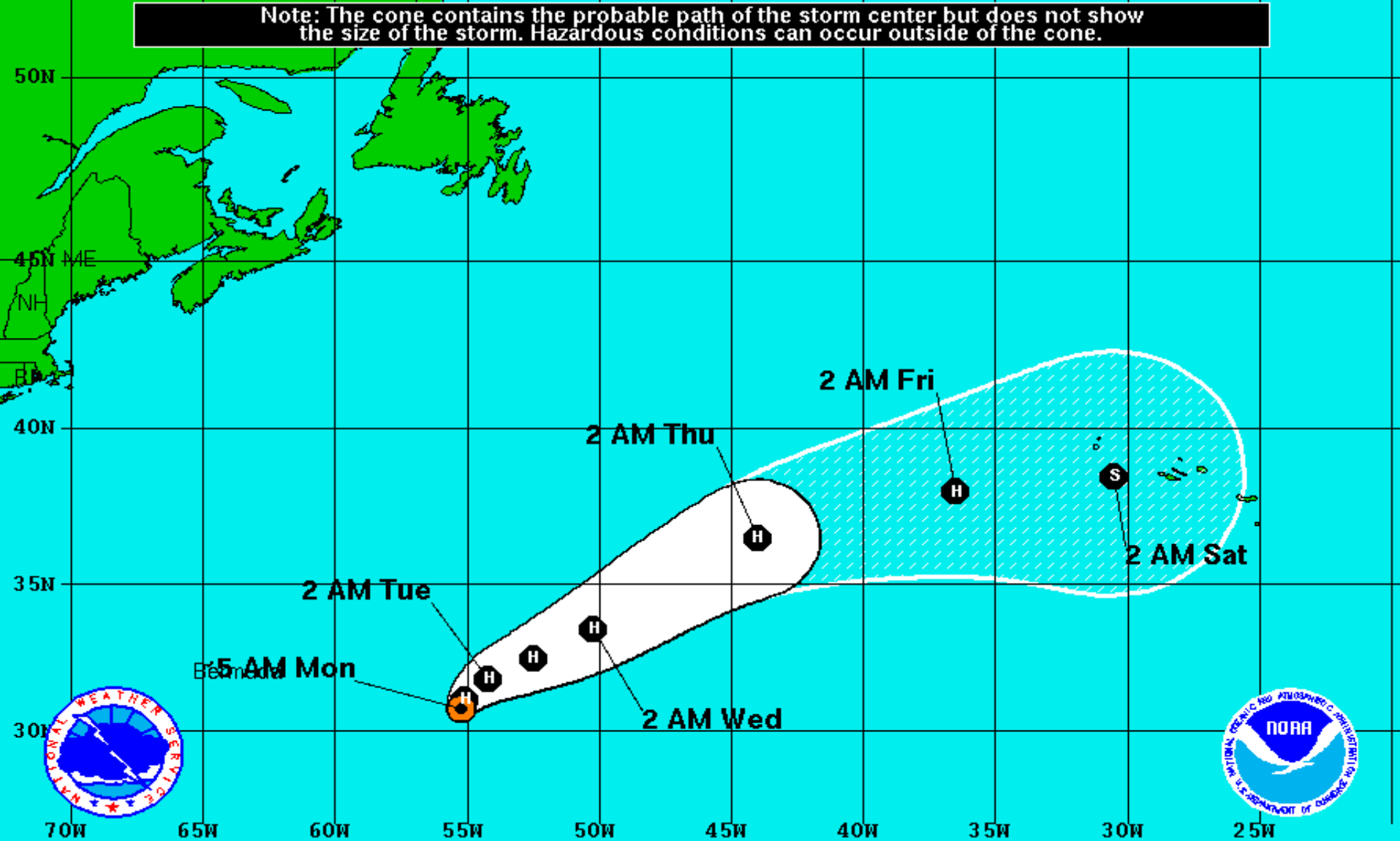
Minimum Pressure 960 mb (28.34 inches)

Blue Marble basemap imagery courtesy NASA

Satellite 12:07 PM UTC
8:07 AM EDT



Note: The cone contains the probable path of the storm center but does not show the size of the storm. Hazardous conditions can occur outside of the cone.



Hurricane Gaston

Monday August 29, 2016

5 AM EDT Advisory 27

NWS National Hurricane Center

Current Information:

Center Location 30.8 N 55.2 W
Max Sustained Wind 115 mph
Movement N at 1 mph

Forecast Positions:

● Tropical Cyclone ○ Post-Tropical
Sustained Winds: D < 39 mph
S 39-73 mph H 74-110 mph M > 110mph

Potential Track Area:

Day 1-3 Day 4-5

Watches:

Hurricane Trop.Storm

Warnings:

Hurricane Trop.Storm

Tropical Depression Eight

8 AM EDT Mon Aug 29 2016

Position 32.9°N, 73.2°W

Maximum Winds 35 mph

Gusts 45 mph

Movement NW at 9 mph

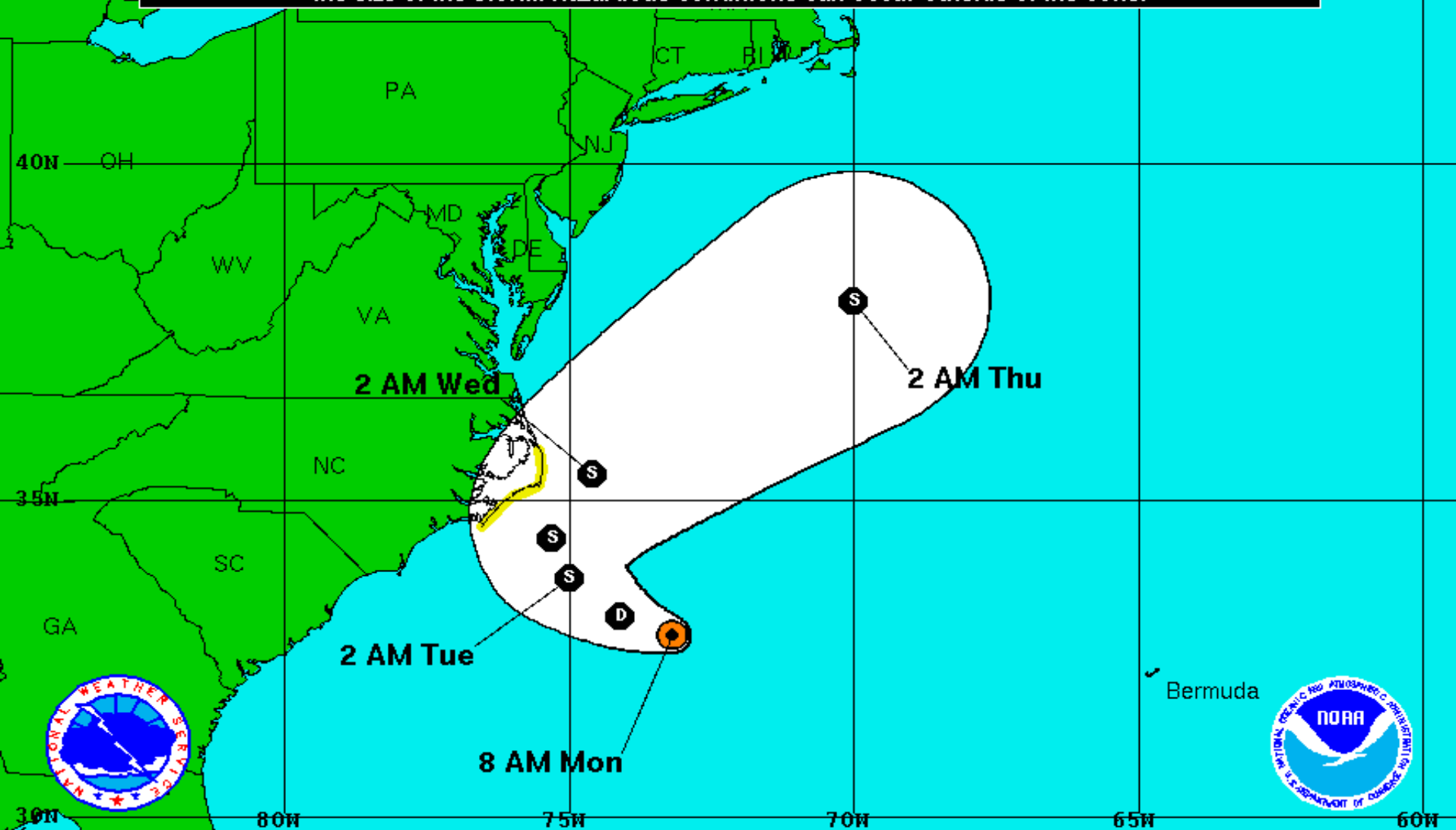
Minimum Pressure 1011 mb (29.84 inches)

Blue Marble basemap imagery courtesy NASA

Satellite 12:08 PM UTC
8:08 AM EDT



Note: The cone contains the probable path of the storm center but does not show the size of the storm. Hazardous conditions can occur outside of the cone.



Tropical Depression Eight

Monday August 29, 2016

8 AM EDT Intermediate Advisory 4A

NWS National Hurricane Center

Current Information:

Center Location 32.9 N 73.2 W

Max Sustained Wind 35 mph

Movement NW at 9 mph

Forecast Positions:

● Tropical Cyclone ○ Post-Tropical

Sustained Winds: D < 39 mph

S 39-73 mph H 74-110 mph M > 110mph

Potential Track Area:

Day 1-3 Day 4-5

Watches:

Hurricane Trop.Storm

Warnings:

Hurricane Trop.Storm

Tropical Depression 9:

- The center of Tropical Depression 9 is located 155 miles west southwest of Key West. The Depression is moving west near 9 mph.
- Data from a NOAA reconnaissance aircraft indicate that the maximum sustained winds are near 35 mph with higher gusts. Some strengthening is forecast during the next 48 hours, and the depression could become a tropical storm later today or tonight.
- A turn toward the west-northwest is forecast today, followed by a slow northwestward motion on Tuesday. On the forecast track, the center of the depression will be passing north of the north coast of western Cuba today, and moving farther into the southeastern Gulf of Mexico by tonight.
- Computer models are in agreement that T.D. 9 will sharply curve towards the north, then northeast on Wednesday and Thursday taking the storm towards the Big Bend region of Florida. Still, possible impacts may be felt from Fort Myers to Pensacola.
- The next name on the Atlantic storm list is Hermine.

Hurricane Gaston:

- Hurricane Gaston has maximum sustained winds of 115 mph and is located in the Central Atlantic.
- Computer models are in good agreement that Gaston will continue moving towards the northwest today, then turn towards the north and northeast tomorrow.

Tropical Depression 8:

- Tropical Depression 8 is located 210 miles southeast of Cape Hatteras, NC with maximum sustained winds at 35 mph.
- The depression is moving northwest at 9 mph, This general motion with a slower forward speed is expected later today, with a turn toward the north forecast on Tuesday or Tuesday night. On the forecast track, the center of the depression will be near the Outer Banks of North Carolina late Tuesday.

Florida Outlook:

- Total rain accumulations of 3 to 5 inches are possible over the southern Florida peninsula and the Florida Keys through Wednesday. Isolated maximum amounts of 7 inches could occur over coastal areas of southern Florida and the Keys. This rainfall may cause flooding and flash flooding.
- Gusts to tropical storm force are possible in a few squalls.
- Strong life threatening rip currents are likely along all east coast beaches for the next few days.
- At this time it is too early to tell what specific impacts 99L will have along the Florida Gulf Coast, although strong rip currents and other coastal hazards are possible throughout the upcoming week.
- Some areas might receive 7-10 inches of rain along the Gulf, with locally higher amounts possible.
- Impacts will likely begin affecting Florida Wednesday night and last through Friday.
- As of now there are no tropical storm watches or warnings issued for Florida.
- Hurricane Gaston and Tropical Depression 8 do not pose a threat to Florida.

Another briefing packet will be issued on Monday between 1100 and 1200. For more information on this system, please visit the NHC website at www.nhc.noaa.gov



TROPICAL UPDATE

Created by:

Kevin Rodriguez, Deputy State Meteorologist

Kevin.Rodriguez@em.myflorida.com

State Meteorological Support Unit

Florida Division of Emergency
Management