



# **TROPICAL UPDATE**

**11 AM EDT**

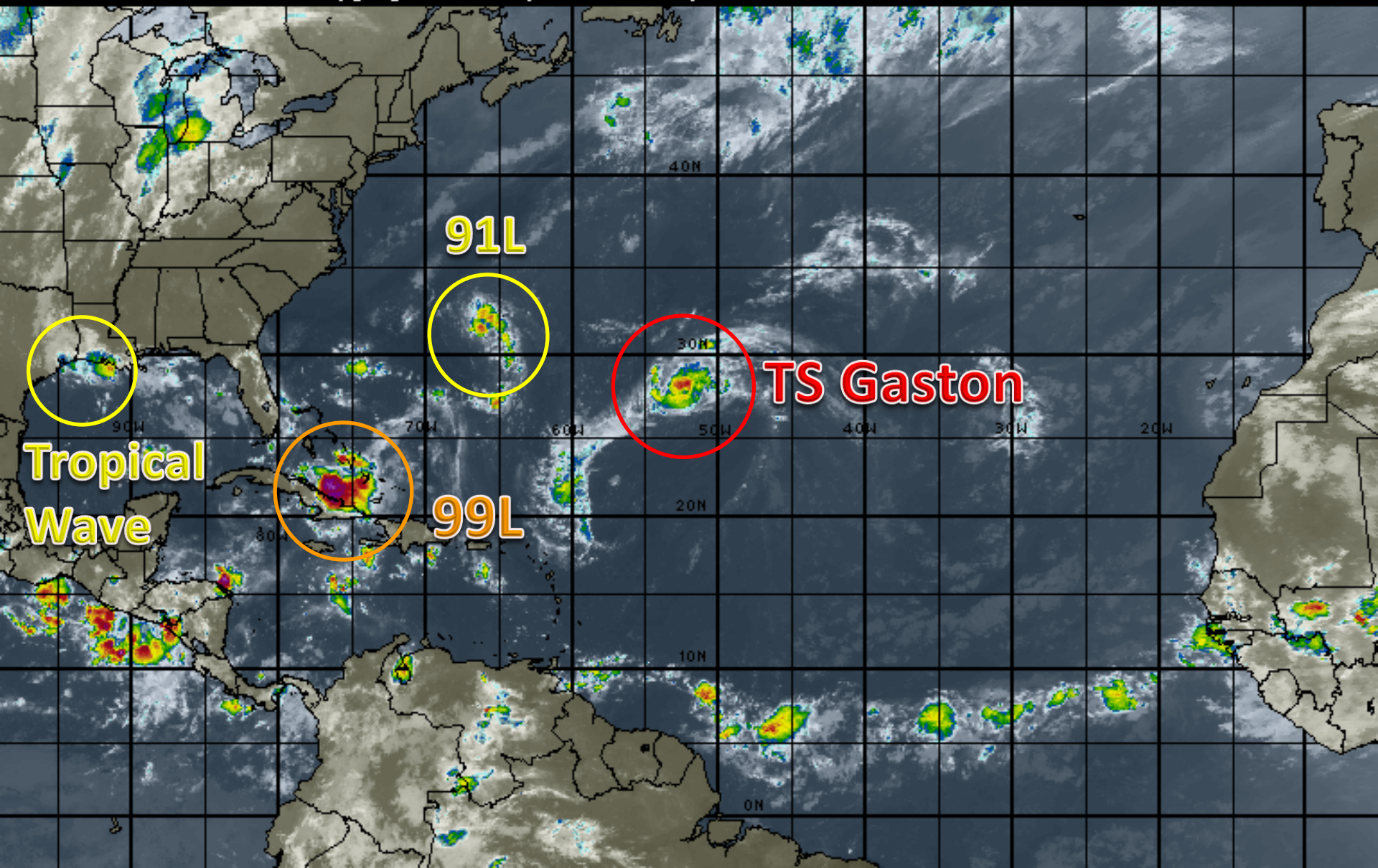
**Saturday, August 27, 2016**

**Invest 99L (40%), T.S. Gaston, & Invest  
91L (30%)**

**This update is intended for government and emergency response officials, and is provided for informational and situational awareness purposes only. Forecast conditions are subject to change based on a variety of environmental factors. For additional information, or for any life safety concerns with an active weather event please contact your County Emergency Management or Public Safety Office, local National Weather Service forecast office or visit the National Hurricane Center website at [www.nhc.noaa.gov](http://www.nhc.noaa.gov).**

# Atlantic Basin Satellite Image

12:00 27-AUG-2016 GMT ©Copyright WSI Corporation <http://www.wsi.com>





# Two-Day Graphical Tropical Weather Outlook

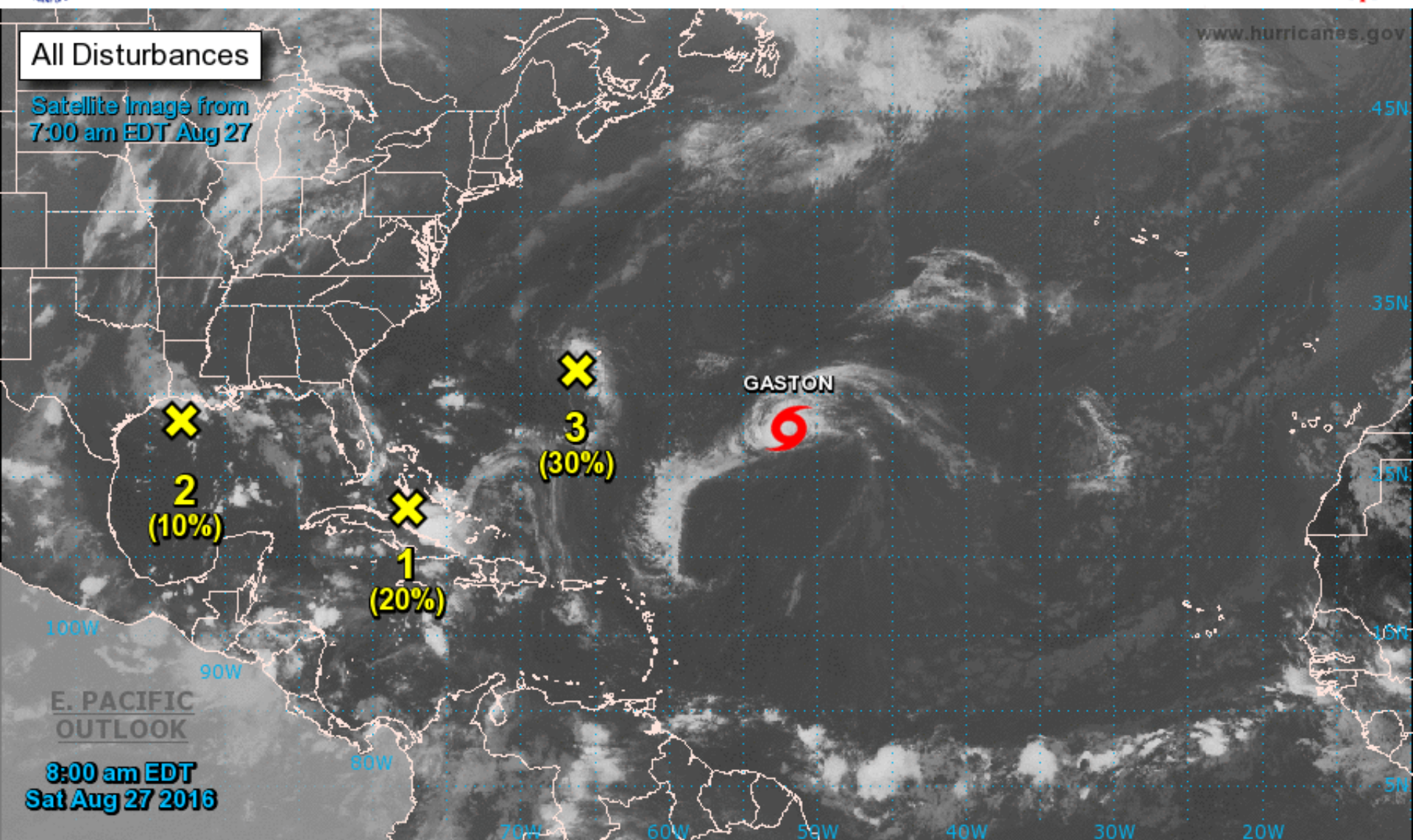
National Hurricane Center Miami, Florida



www.hurricanes.gov

All Disturbances

Satellite Image from  
7:00 am EDT Aug 27



8:00 am EDT  
Sat Aug 27 2016

Current Disturbances and Two-Day Cyclone Formation Chance: < 40% 40-60% > 60%  
Tropical or Sub-Tropical Cyclone: Depression Storm Hurricane  
 Post-Tropical Cyclone Remnants



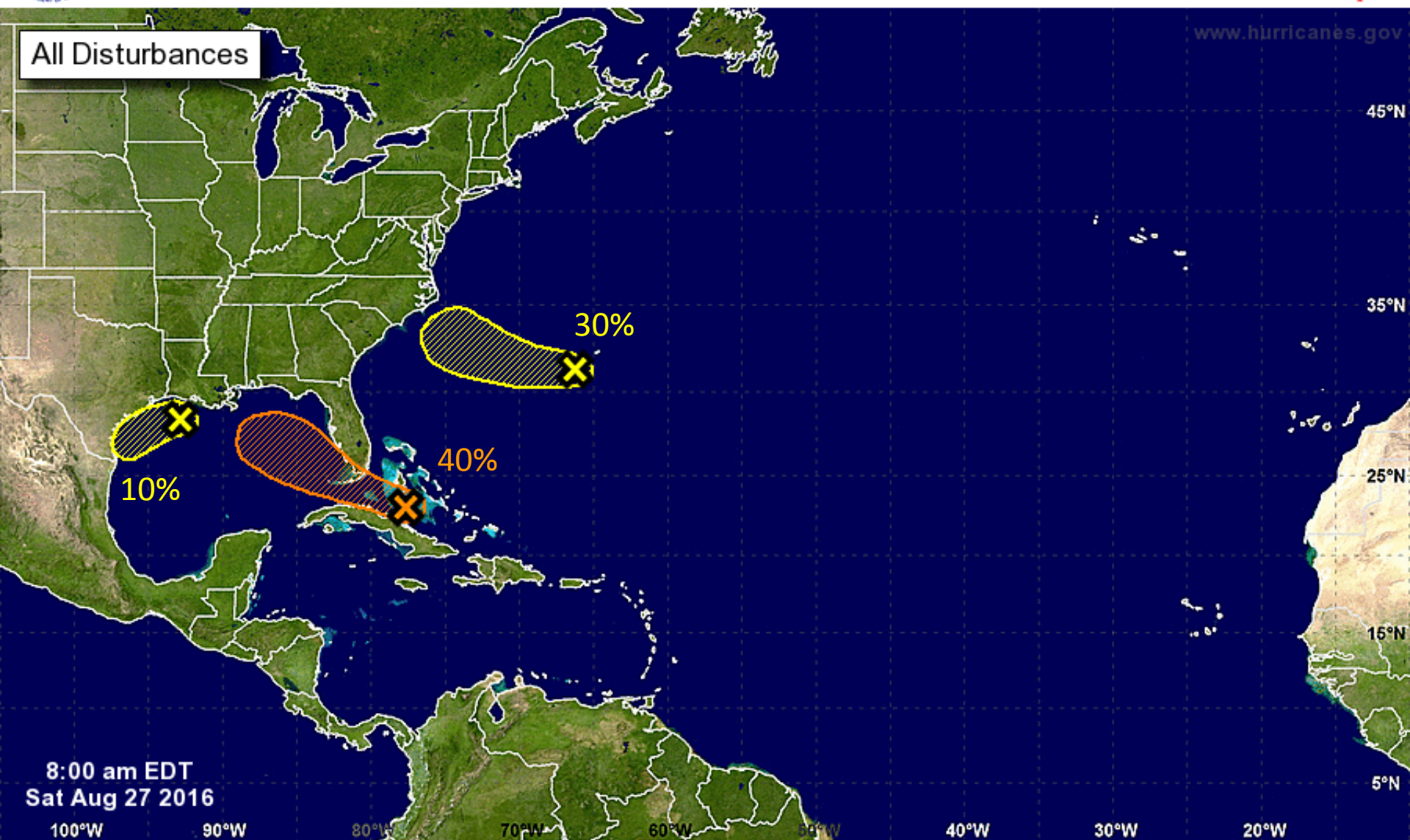
# Five-Day Graphical Tropical Weather Outlook

National Hurricane Center Miami, Florida



www.hurricanes.gov

All Disturbances

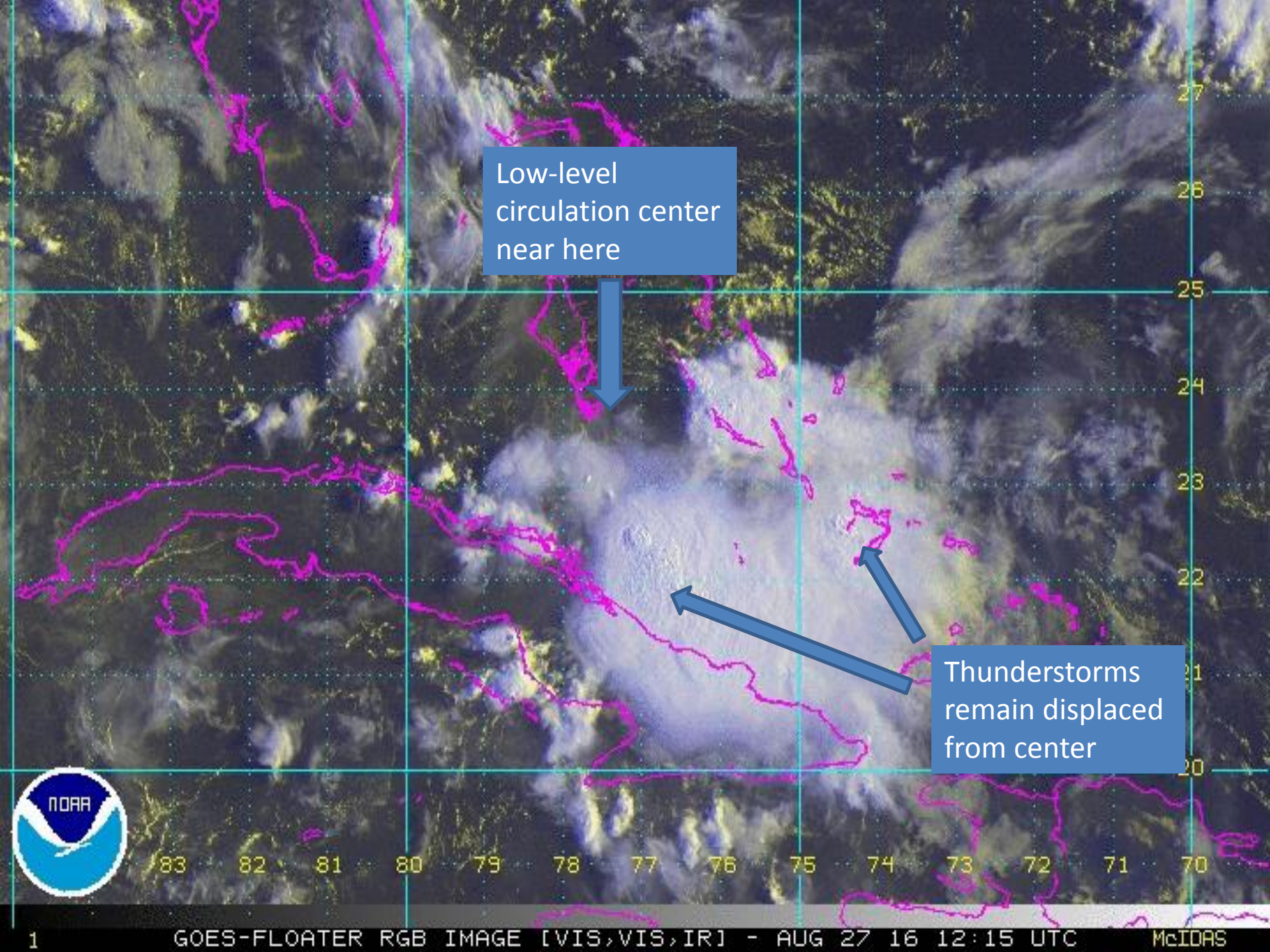


8:00 am EDT  
Sat Aug 27 2016

Tropical Cyclone Formation Potential for the Five-Day Period Ending at 8:00 am EDT Thu Sep 1 2016

Chance of Cyclone Formation in Five Days: ■ Low < 40% ■ Medium 40-60% ■ High > 60%

X indicates current disturbance location; shading indicates potential formation area.

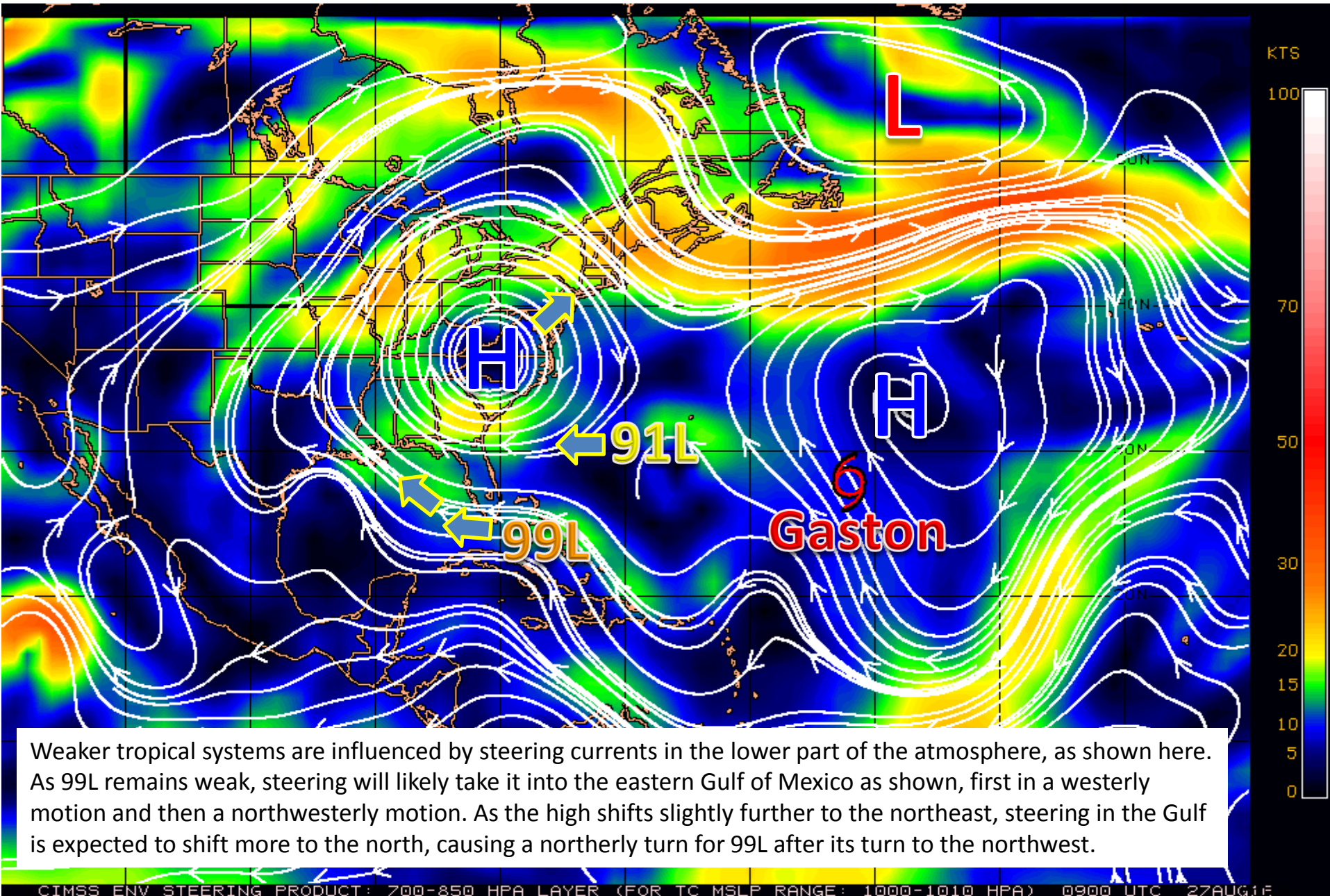


Low-level  
circulation center  
near here

Thunderstorms  
remain displaced  
from center

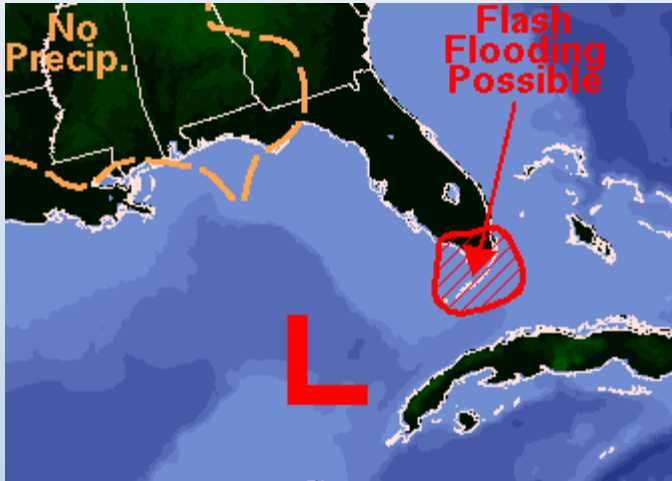


# Steering Currents

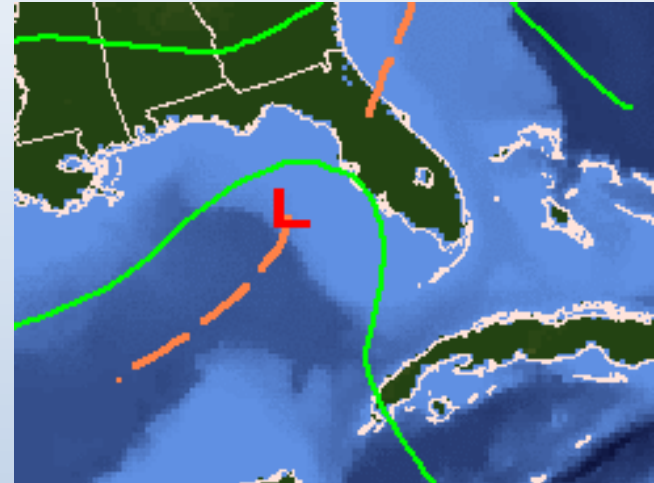


# Forecast Weather Maps

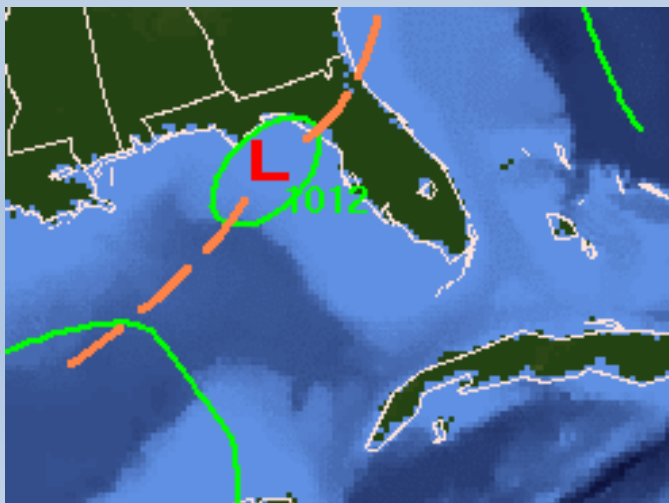
Monday



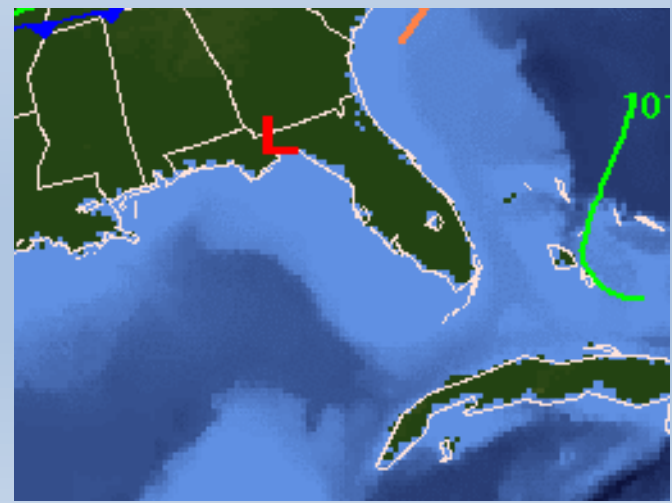
Tuesday



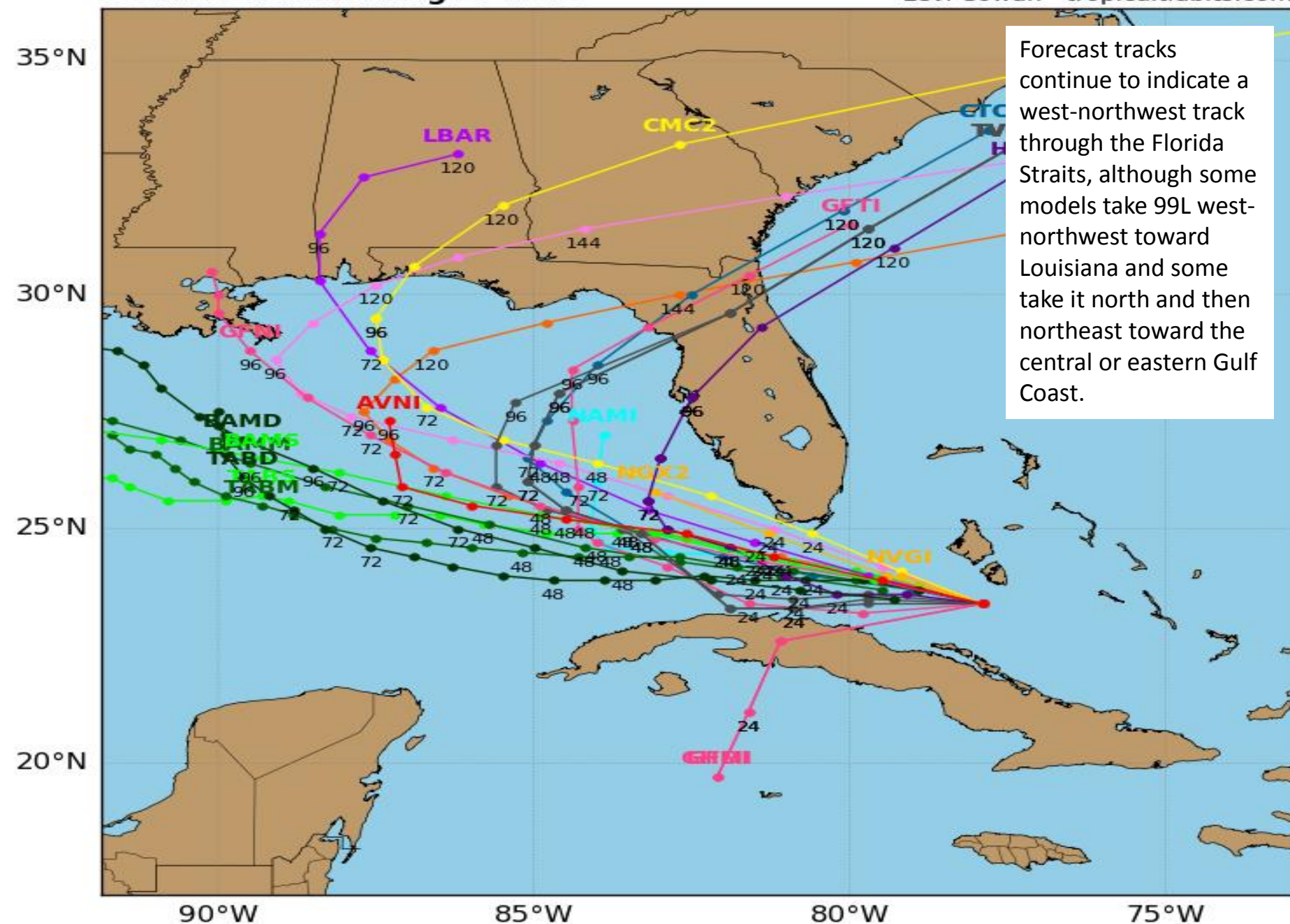
Wednesday



Thursday



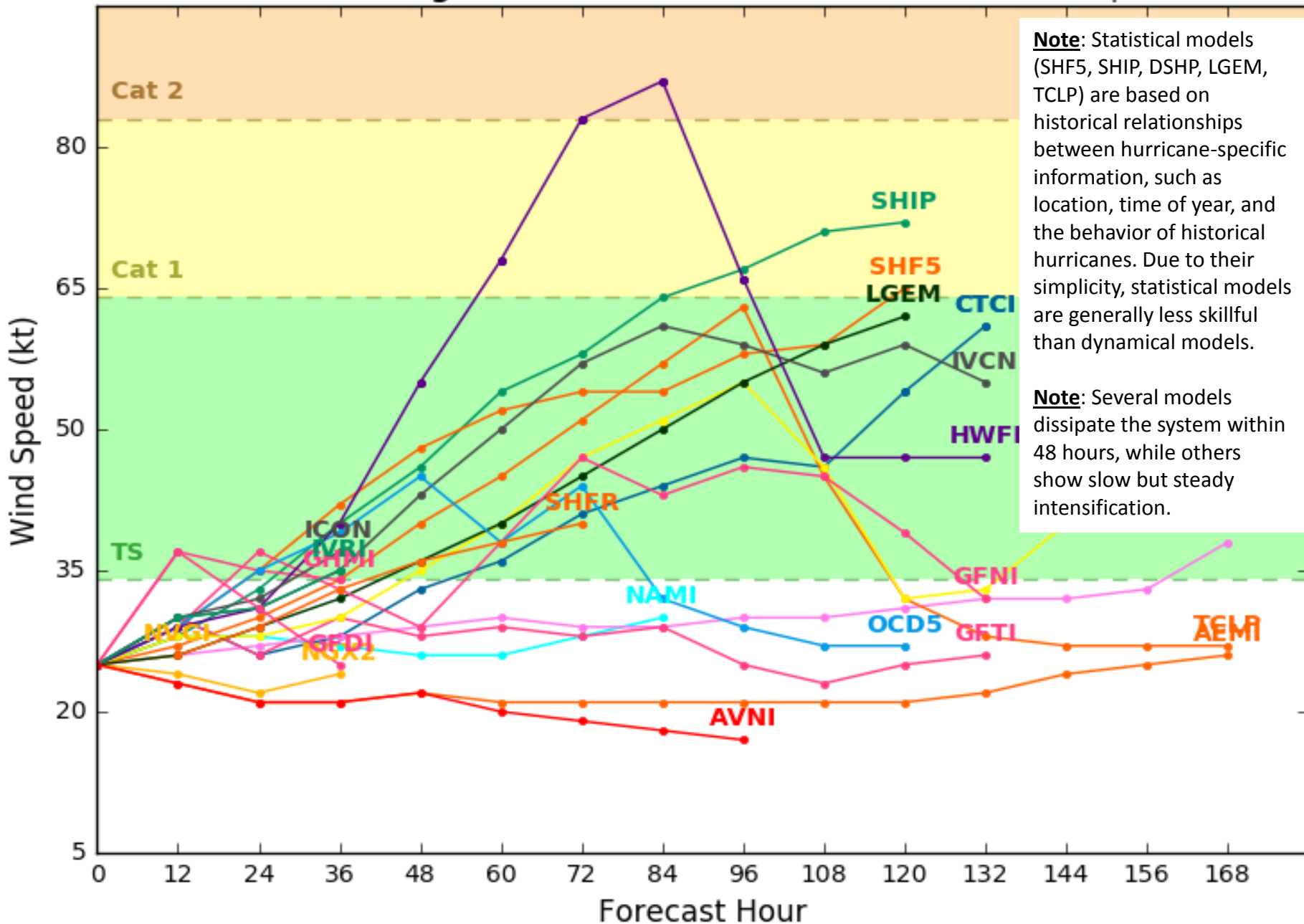
**Initialized at 12z Aug 27 2016**

Levi Cowan - [tropicaltidbits.com](http://tropicaltidbits.com)

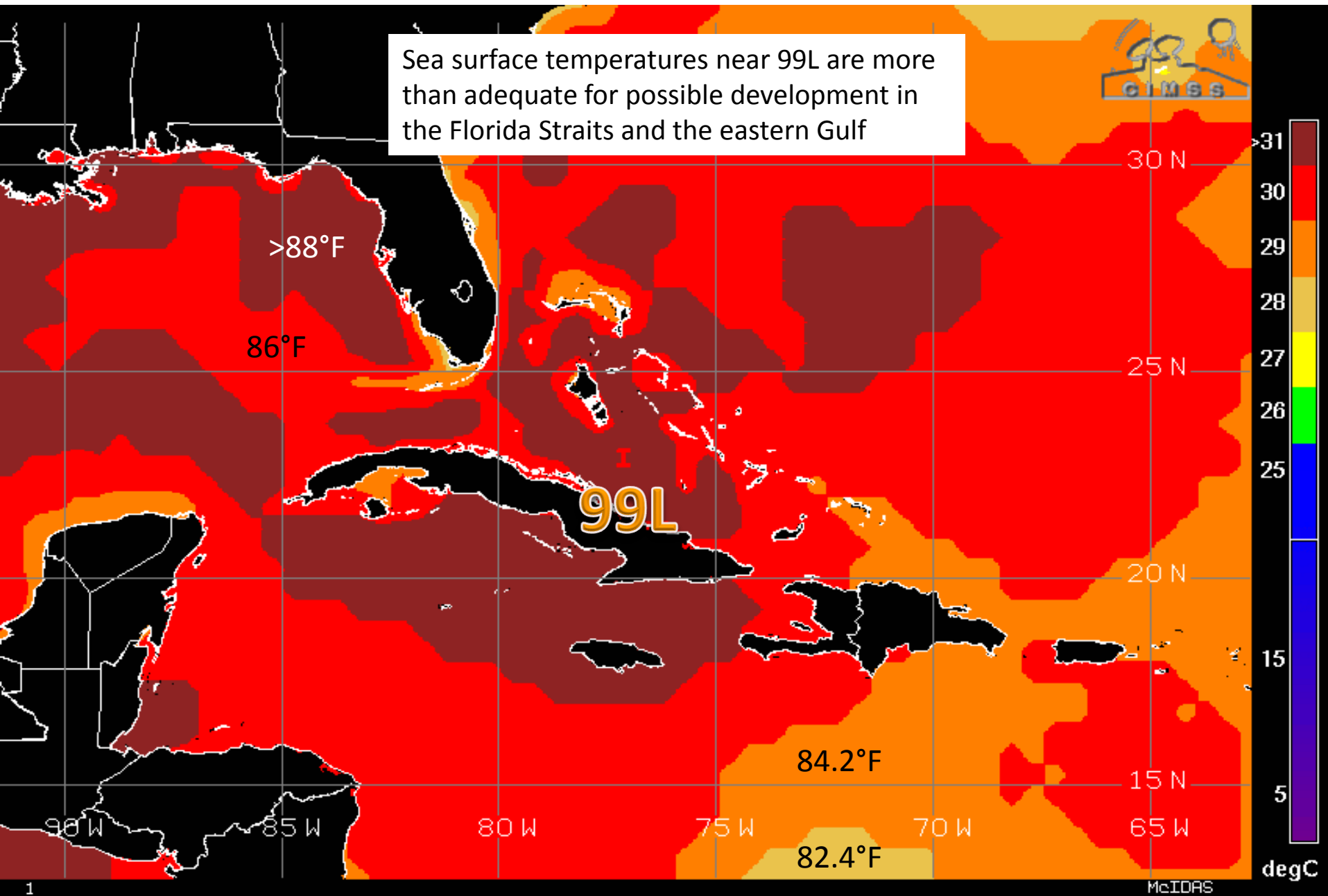
# Invest 99L Model Intensity Guidance

Initialized at 12z Aug 27 2016

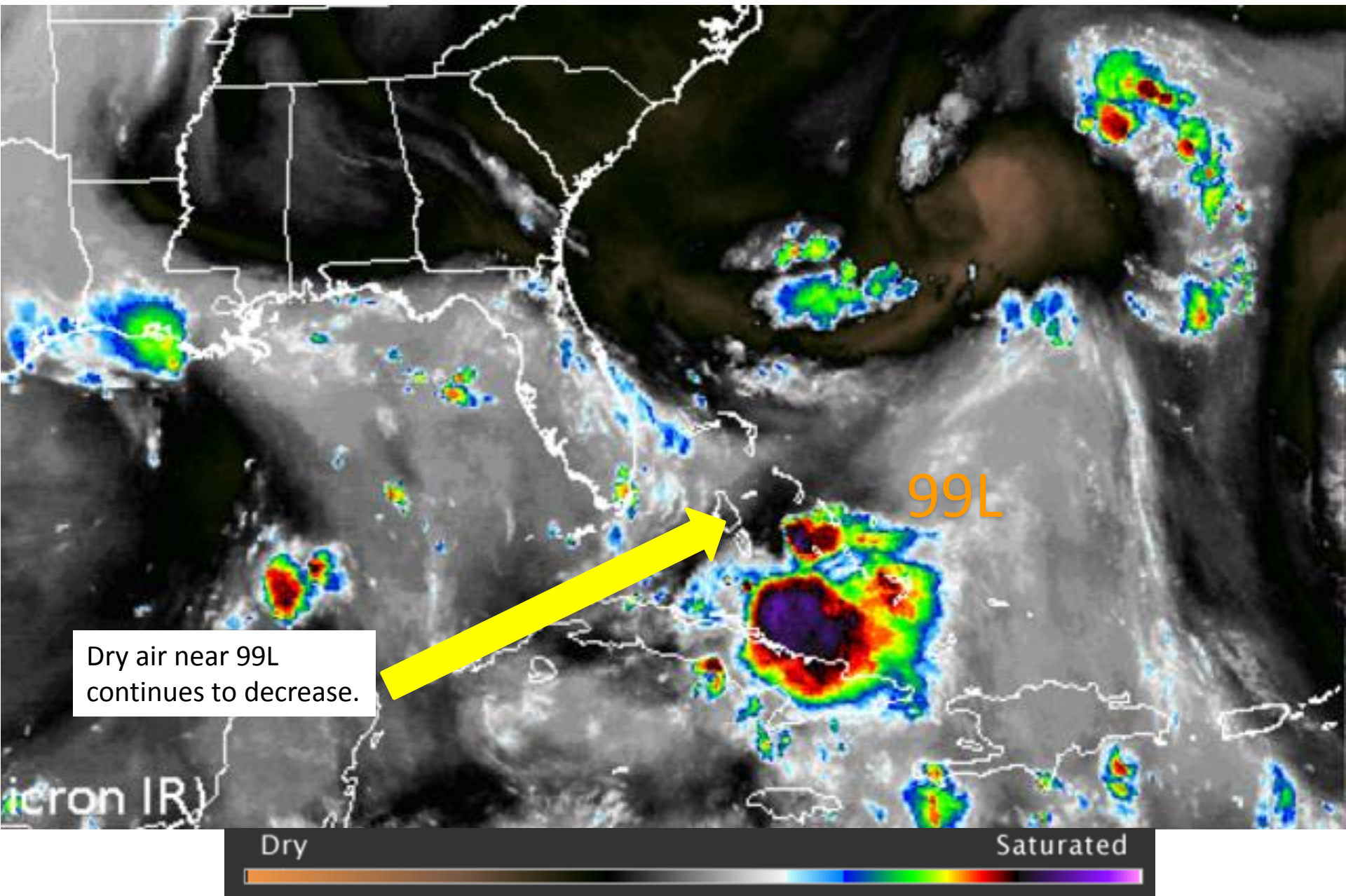
Levi Cowan - [tropicaltidbits.com](http://tropicaltidbits.com)



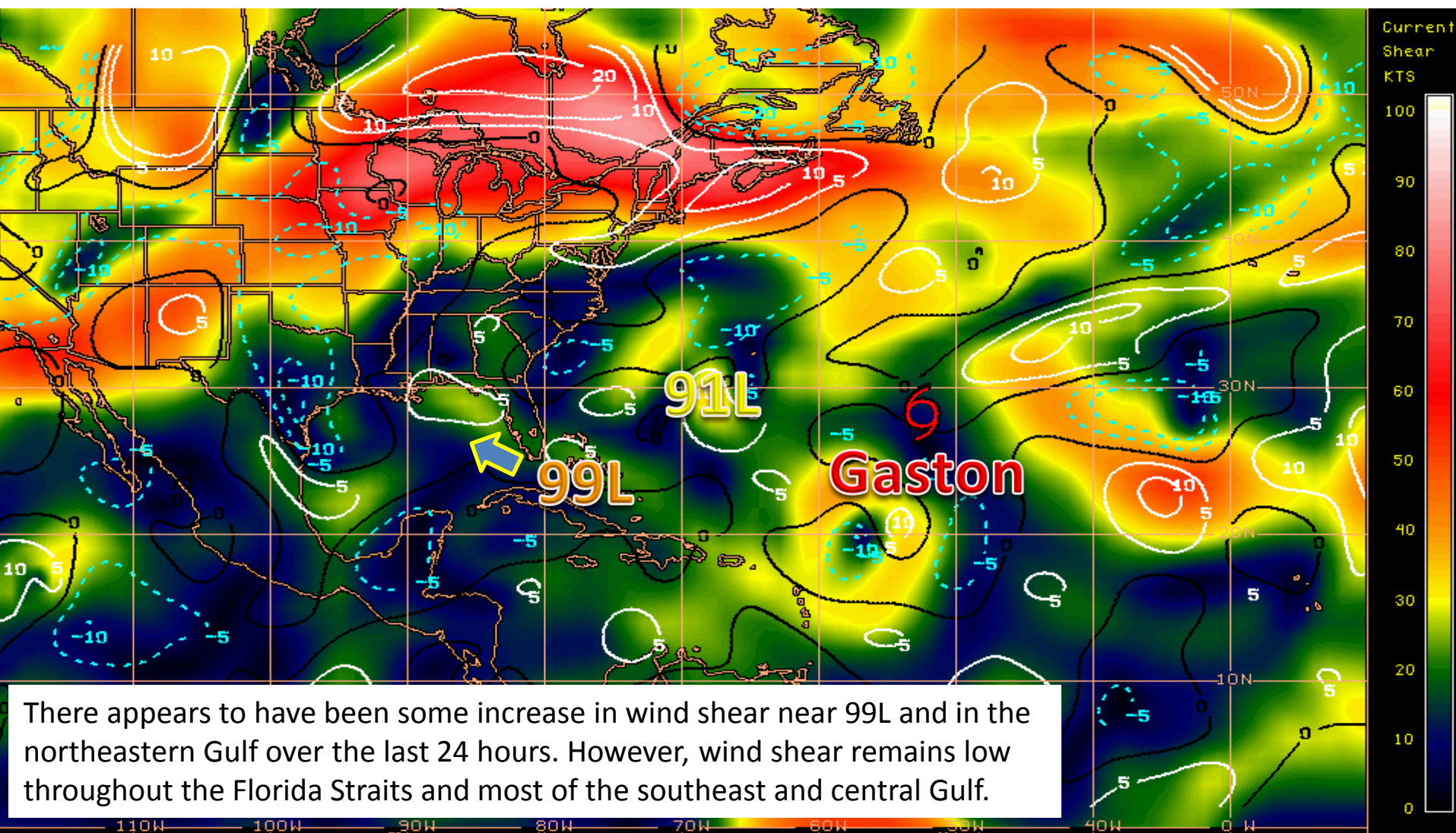
# Sea Surface Temperatures Near 99L



# Water Vapor Imagery of 99L

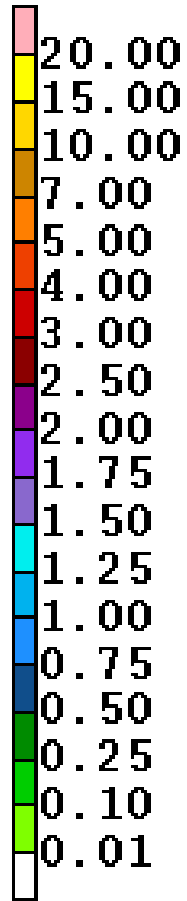


# Current Wind Shear (Shaded) and Shear Tendency (Lines)

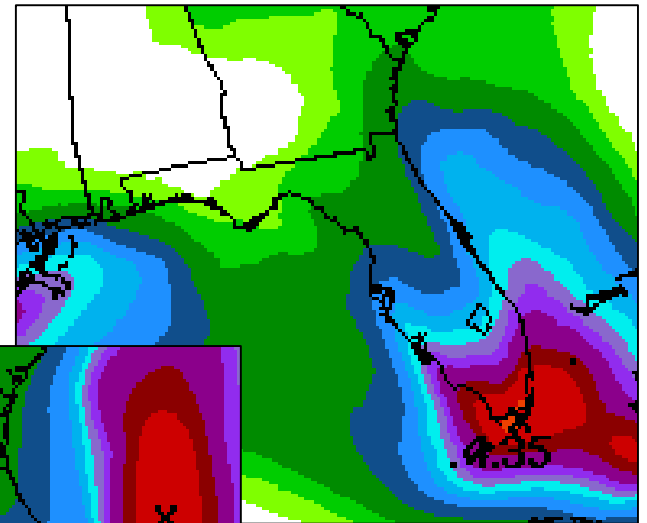


Shear Tendency (KTS) Over Past 24 Hours: Increasing ——— Decreasing - - - - -

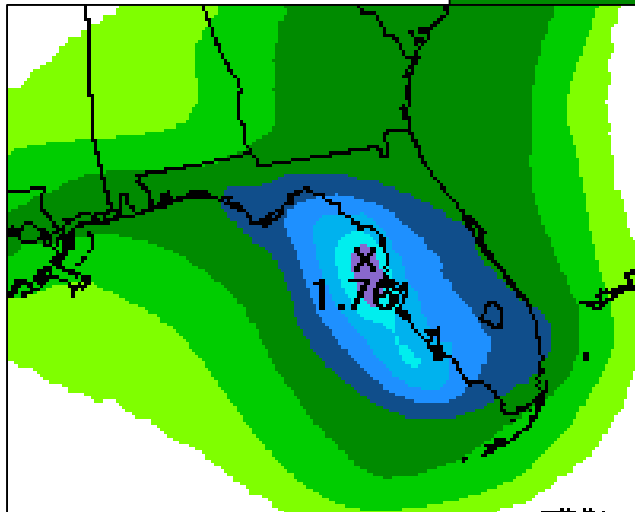
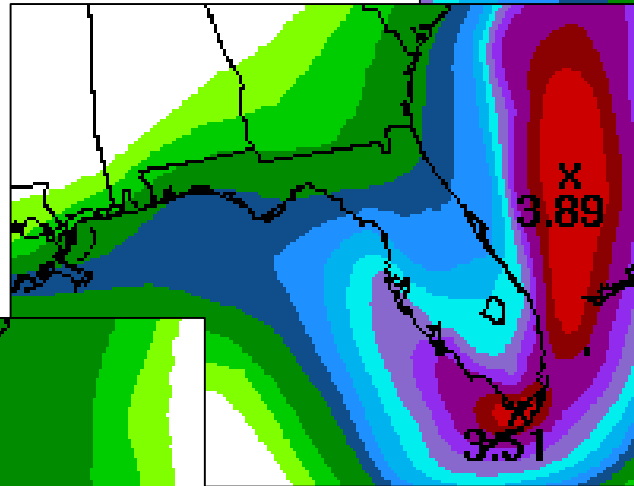
# Current Rainfall Forecast



Saturday-Monday →

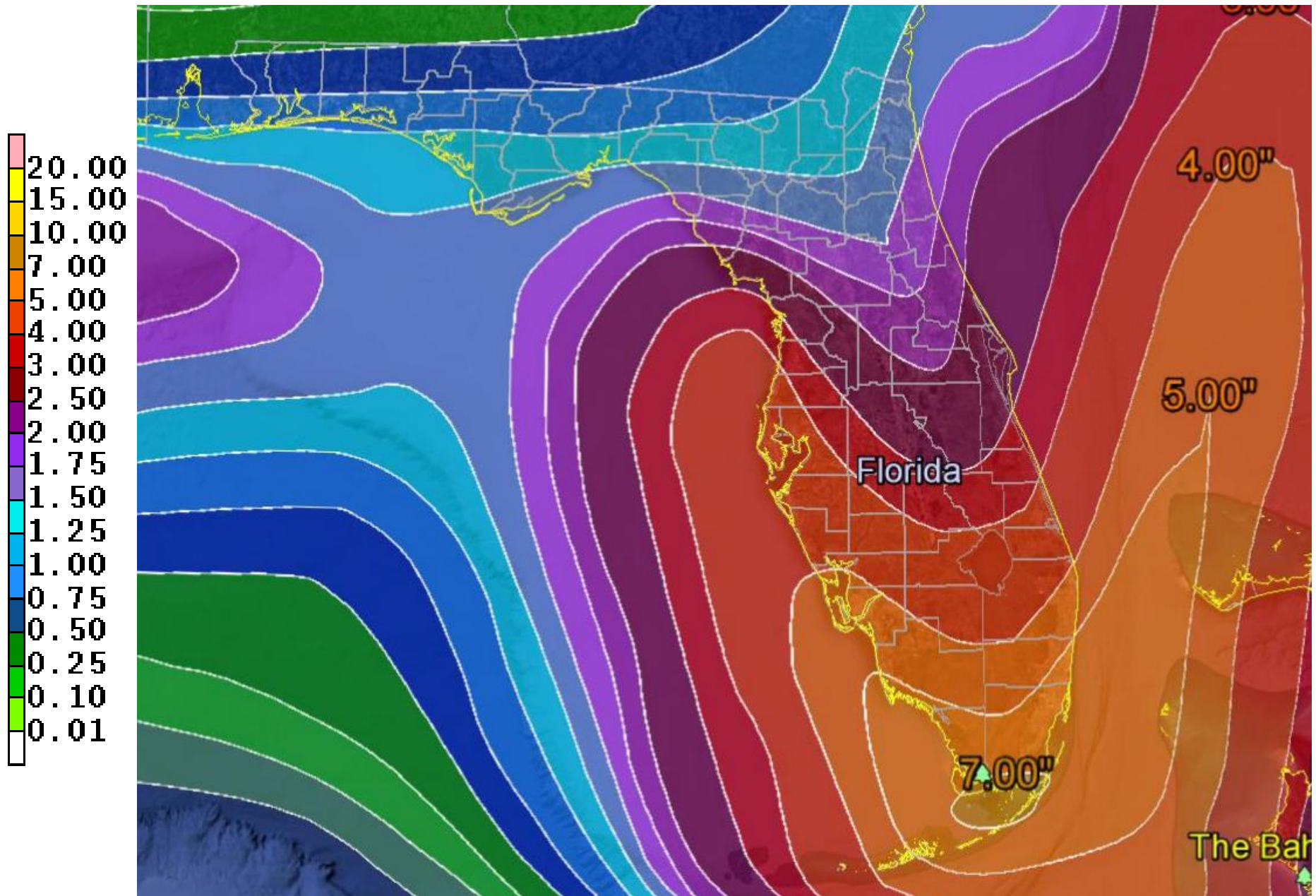


Tuesday-Wednesday →



← Thursday-Friday

# 7-Day Rainfall Forecast



# Tropical Storm Gaston

5 AM EDT Sat Aug 27 2016

Position 27.9 N 52.0 W

Maximum Winds 65 mph

Gusts 75 mph

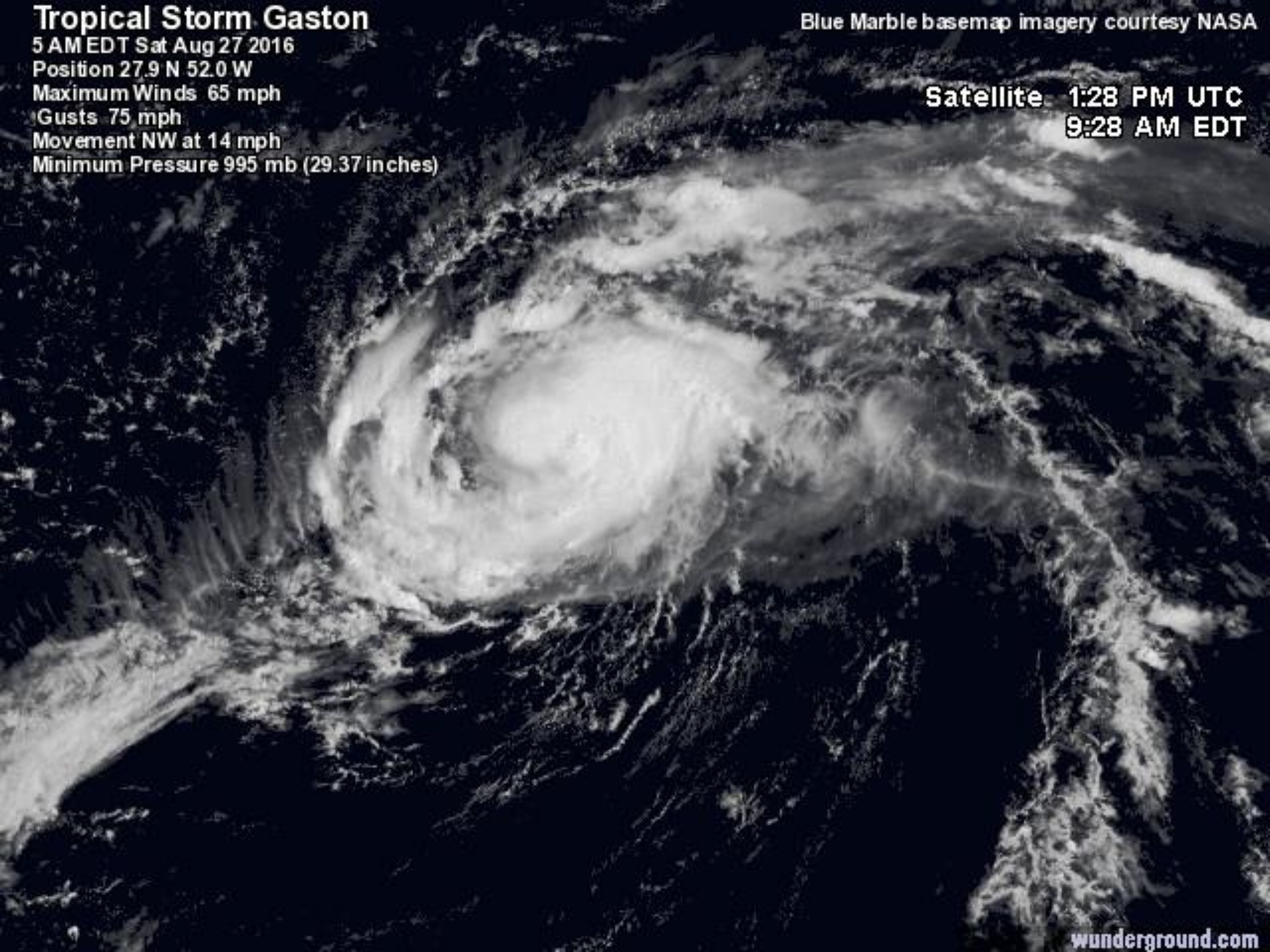
Movement NW at 14 mph

Minimum Pressure 995 mb (29.37 inches)

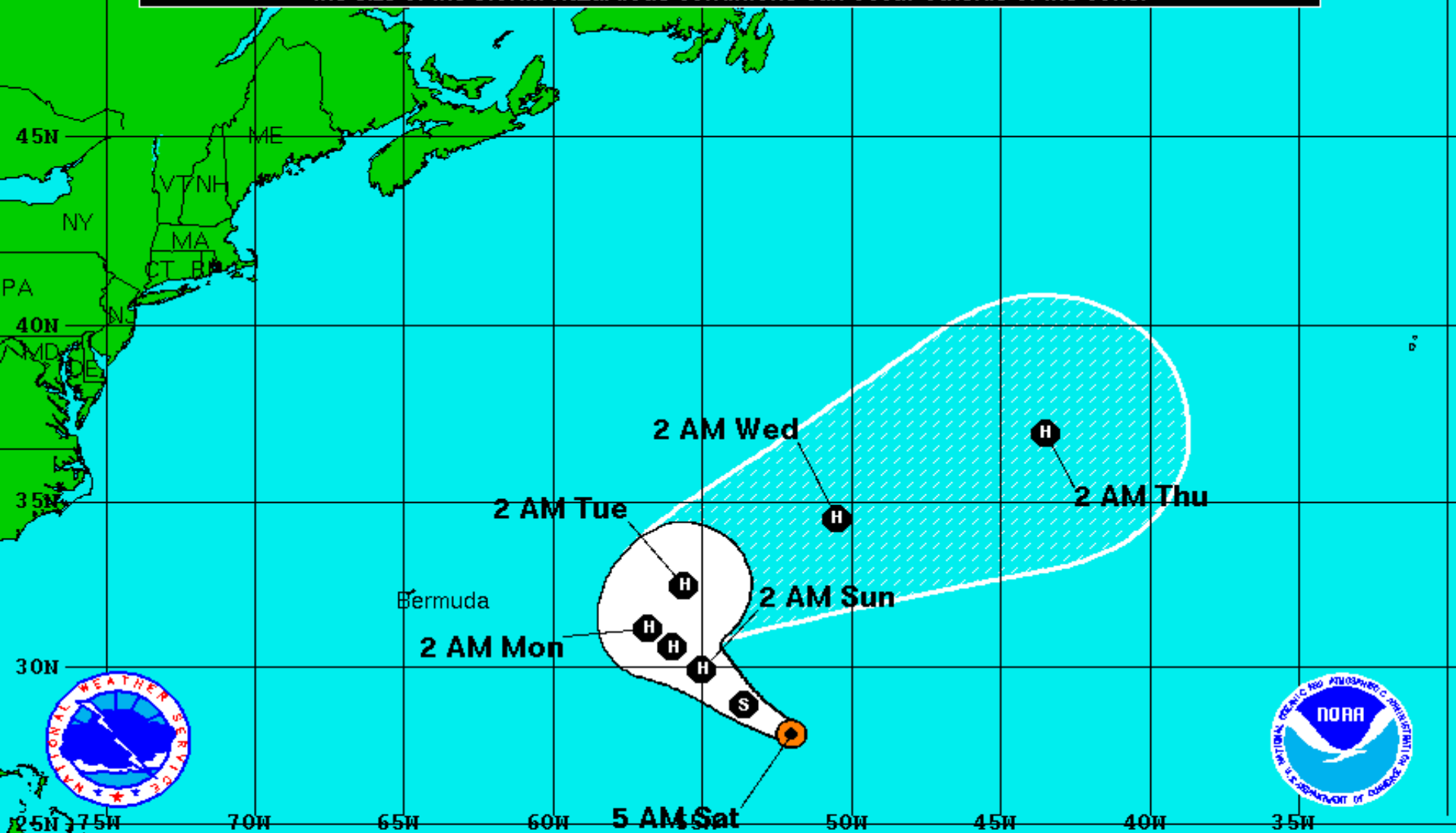
Blue Marble basemap imagery courtesy NASA

Satellite 1:28 PM UTC


9:28 AM EDT





Note: The cone contains the probable path of the storm center but does not show the size of the storm. Hazardous conditions can occur outside of the cone.



**Tropical Storm Gaston**  
 Saturday August 27, 2016  
 5 AM EDT Advisory 19  
 NWS National Hurricane Center

**Current Information:**   
 Center Location 27.9 N 52.0 W  
 Max Sustained Wind 65 mph  
 Movement NW at 15 mph

**Forecast Positions:**  
 Tropical Cyclone  Post-Tropical  
 Sustained Winds: D < 39 mph  
 S 39-73 mph H 74-110 mph M > 110 mph

**Potential Track Area:**  
 Day 1-3  Day 4-5

**Watches:**  
 Hurricane  Trop.Storm

**Warnings:**  
 Hurricane  Trop.Storm

# Invest 91L

8 AM Sat Aug 27 2016

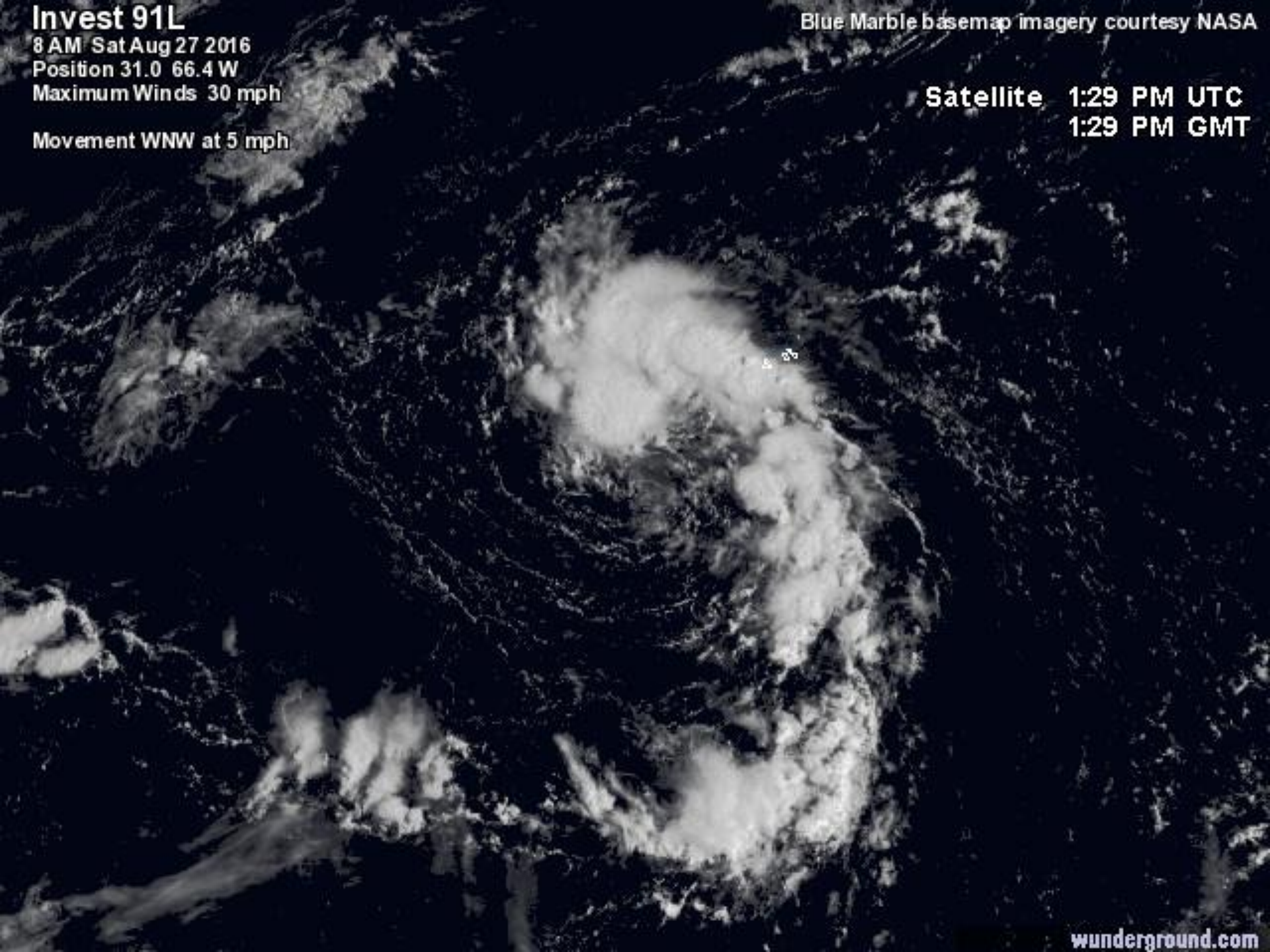
Position 31.0 66.4 W

Maximum Winds 30 mph

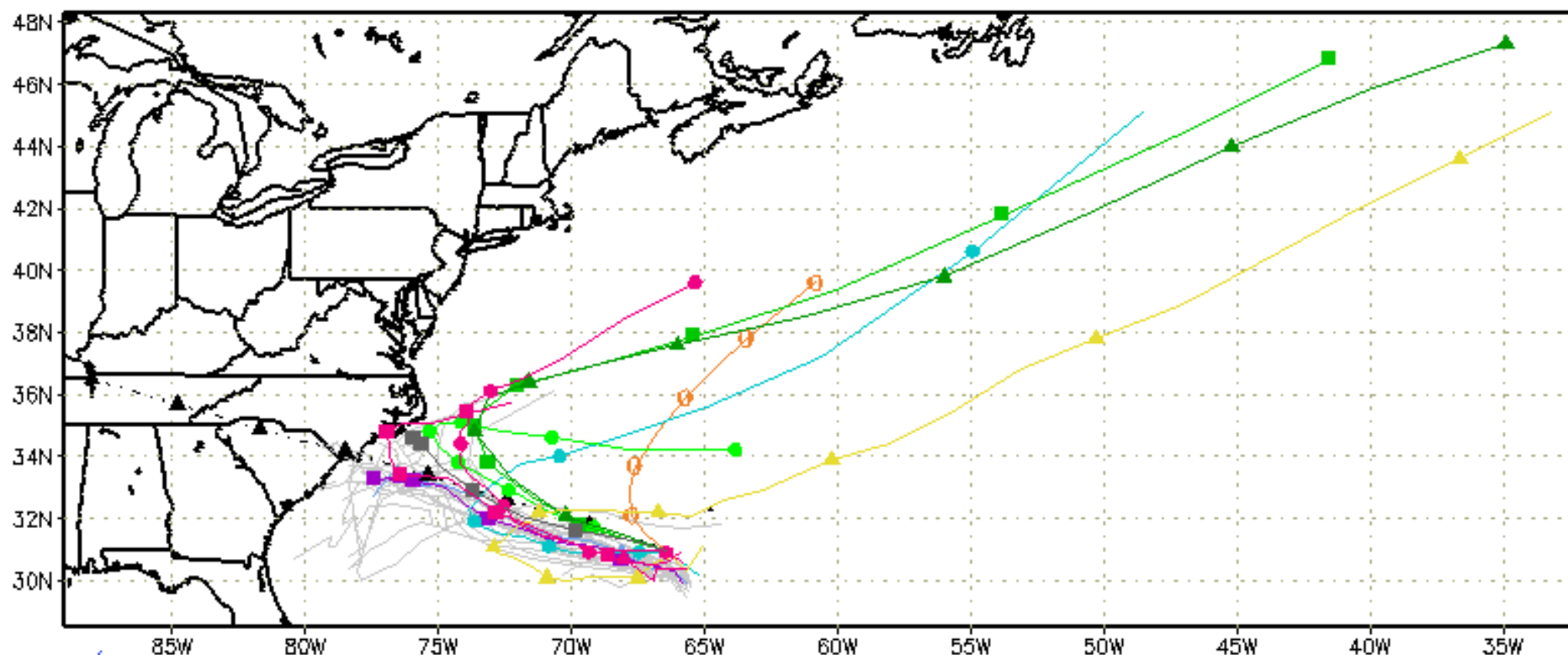
Movement WNW at 5 mph

Blue Marble basemap imagery courtesy NASA

Satellite 1:29 PM UTC  
1:29 PM GMT



--▲-- XTRP 27/1200Z    ▲ BAMD 27/1200Z    ▲ GFDL 27/0600Z    ▲ AVNO 27/0600Z    ▲ CMC 27/0000Z  
 ■ TVCN 27/1200Z    ■ BAMB 27/1200Z    ■ GFDN 27/0600Z    ■ AEMN 27/0600Z    ■ UKM 27/0000Z  
 ● TV15 Not Avail    ● BAMS 27/1200Z    ● HWRF 27/0600Z    ● APxx 27/0600Z    ● NGX 27/0000Z  
 ● NHC Not Avail    ○ AHWI Not Avail    ○ FIM9 Not Avail    ○ GLP5 27/1200Z



storm\_91  
 sfwmd.gov  
 weather@sfwmd.gov  
 27-Aug 09:36EDT

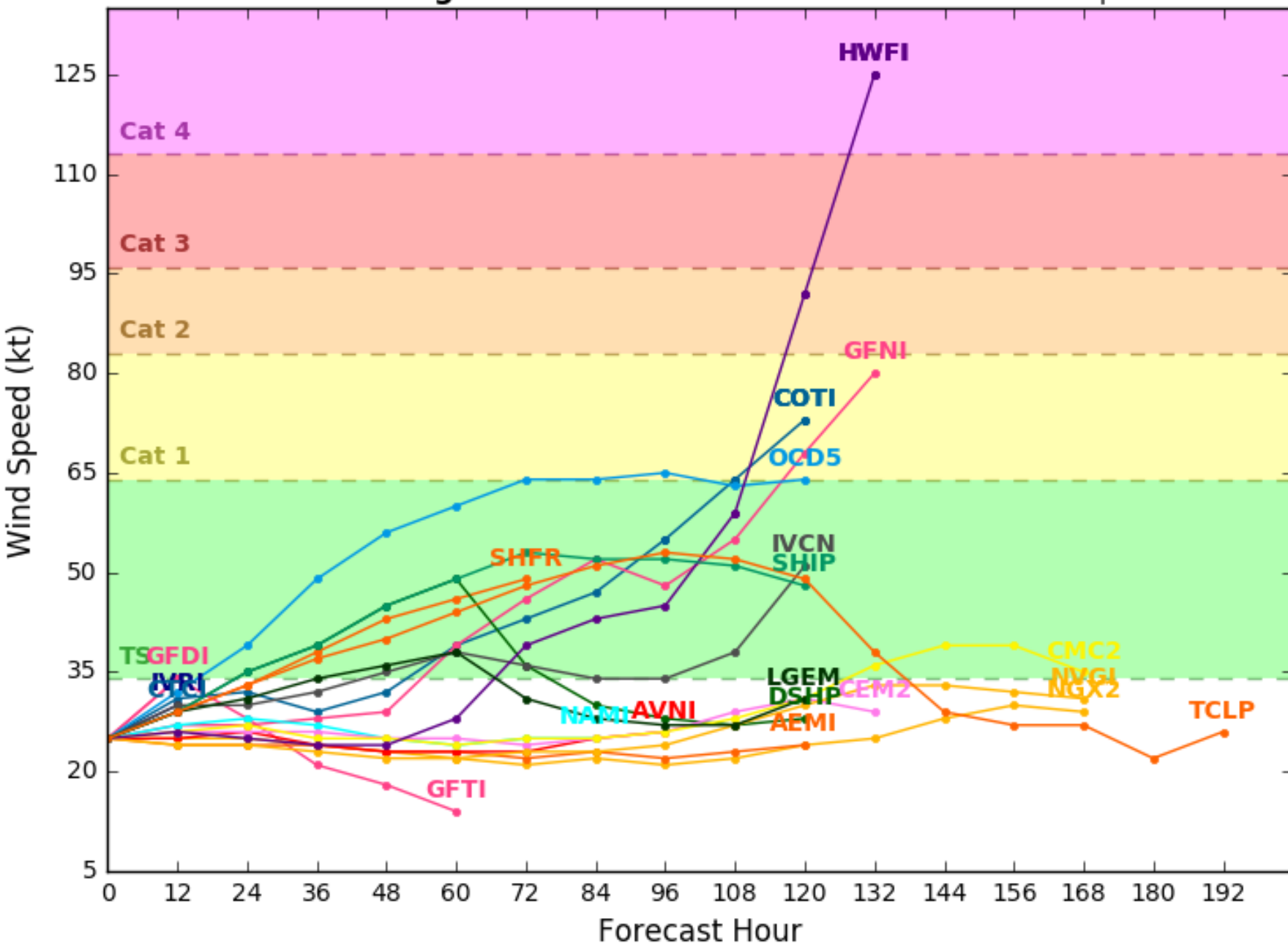
NHC Advisories and County Emergency Management Statements supersede this product.  
 This graphic should complement, not replace, NHC discussions.  
 If anything on this graphic causes confusion, ignore the entire product.  
 For full info, see <http://my.sfwmd.gov/sfwmd/common/images/weather/plots.html>



# Invest 91L Model Intensity Guidance

Initialized at 12z Aug 27 2016

Levi Cowan - tropicaltidbits.com



# Summary

## General Outlook:

- An weak area of low pressure centered south of the Bahamas, designated Invest 99L, continues to produce disorganized showers and storms displaced away from its apparent low pressure center.
- It is currently moving west-northwest at 10 mph toward the Florida Straits.
- 99L has a 20% (low) chance of development over the next 48 hours and a 40% (medium) chance of development over the next five days, both decreasing since yesterday afternoon.
- Wind shear continues to inhibit any development in the near term. However, conditions could become more favorable for development as it moves into the eastern Gulf of Mexico early next week.
- Computer models are in good agreement that 99L will continue moving west-northwest through the Florida Straits and into the southeast Gulf over the next 48 hours.
- Beyond that, the models vary from a continued west-northwest track toward Louisiana to a turn to the north and then northeast toward the Nature Coast of Florida within five or six days. A forecast track toward Florida would likely keep the system weaker than a forecast track toward the central Gulf.
- Note that it is more important to focus on trends and consistency in the models rather than a specific model.
- Computer models are also in some disagreement on 99L's future intensity, but most models forecast 99L to become a tropical storm within the next two to four days.
- After 99L moves through the Florida Straits and into the southeast Gulf, where it is headed and its future intensity will be more clear.
- Gaston remains a strong tropical storm, with maximum sustained winds of 65 mph.
- It is moving to the northwest at 15 mph over the open waters of the central Atlantic, and is not a threat to any land.

# Summary

- A weak area of low pressure off the Louisiana coast has a 10% (low) chance of development over the next 48 hours and the next five days. It may bring heavy rainfall to Louisiana and southeast Texas before it reaches the Texas coast tomorrow.
- An area of low pressure southwest of Bermuda, Invest 91L, has a 30% (low) chance of development over the next 48 hours and the next five days.
- Any development would be slow to occur due to dry air nearby as it moves west and then west-northwest toward the Carolinas over the next few days.

## **Florida Outlook:**

- As computer models struggle with 99L's future intensity and track, continued monitoring is recommended.
- Regardless of development, South Florida and the Keys will likely see an increasing threat for heavy rainfall and rip currents this weekend, and gusty winds and isolated waterspouts cannot be ruled out.
- Potential impacts for the Gulf Coast are dependent on 99L's track and strength. Currently, there is low confidence in any specific impacts, although gusty winds and heavy rainfall, and some flooding concerns due to saturated soils in some areas, are possible next week.
- An increased risk of rip currents and other coastal hazards are also possible next week for the Gulf Coast.
- Tropical Storm Gaston and Invest 91L do not pose a threat to Florida.

The next briefing packet will be issued Sunday morning. For more information, visit the NHC website at [www.nhc.noaa.gov](http://www.nhc.noaa.gov).



# TROPICAL UPDATE

Created by:

William Watson, Assistant State Meteorologist  
[william.watson@em.myflorida.com](mailto:william.watson@em.myflorida.com)

State Meteorological Support Unit

Florida Division of Emergency Management

Users wishing to subscribe (approval pending) to this distribution list, register at  
[https://public.govdelivery.com/accounts/FLDEM/subscriber/new?topic\\_id=SERT\\_Met\\_Tropics](https://public.govdelivery.com/accounts/FLDEM/subscriber/new?topic_id=SERT_Met_Tropics).  
Other reports available for subscription are available at  
<https://public.govdelivery.com/accounts/FLDEM/subscriber/new?preferences=true>