



# **TROPICAL UPDATE**

**9 AM EDT**

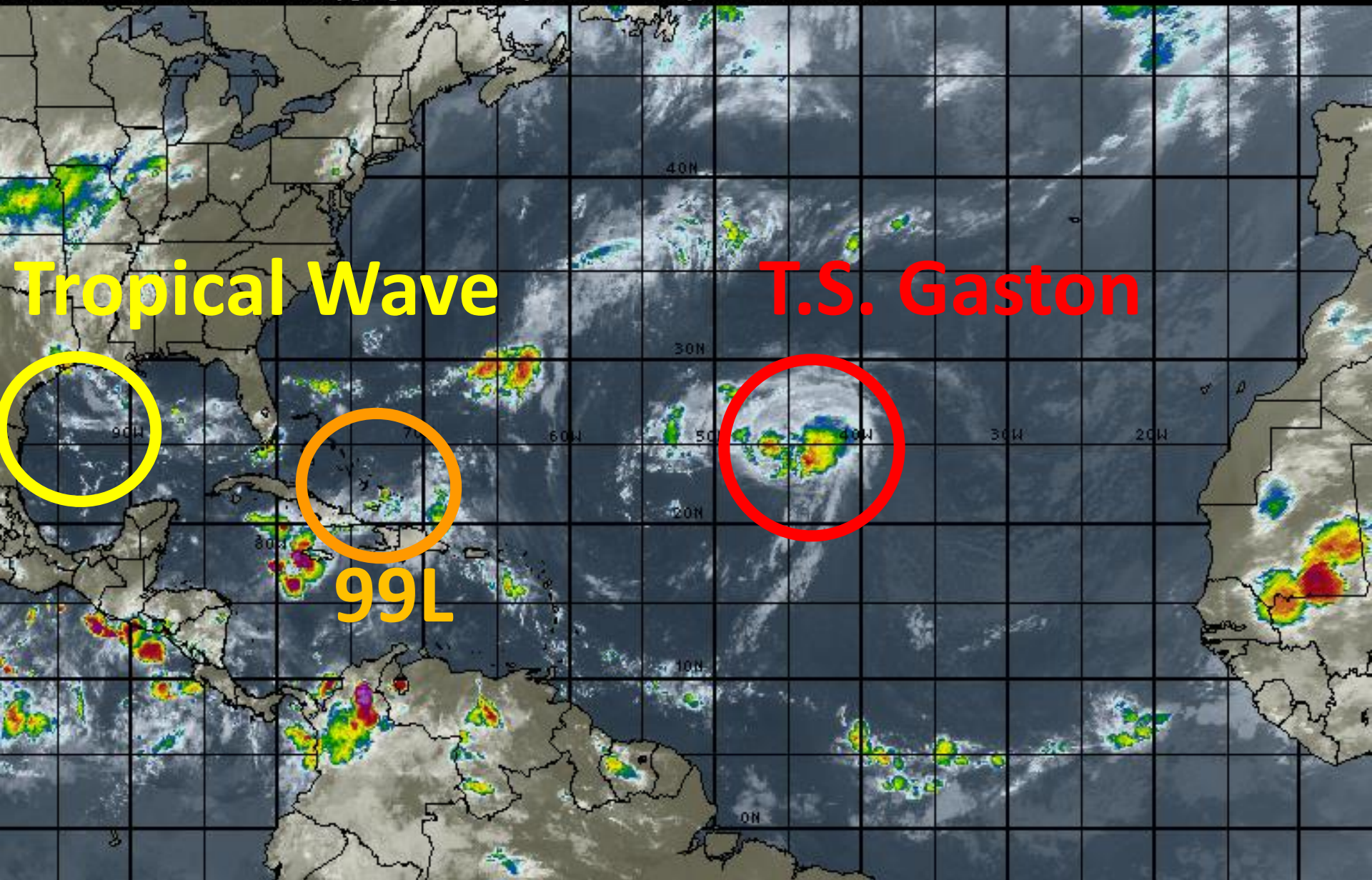
**Friday, August 26, 2016**

**Invest 99L (60%) & Tropical Storm  
Gaston**

**This update is intended for government and emergency response officials, and is provided for informational and situational awareness purposes only. Forecast conditions are subject to change based on a variety of environmental factors. For additional information, or for any life safety concerns with an active weather event please contact your County Emergency Management or Public Safety Office, local National Weather Service forecast office or visit the National Hurricane Center website at [www.nhc.noaa.gov](http://www.nhc.noaa.gov).**

# Atlantic Basin Satellite Image

09:00 26-AUG-2016 GMT ©Copyright WSI Corporation <http://www.wsi.com>

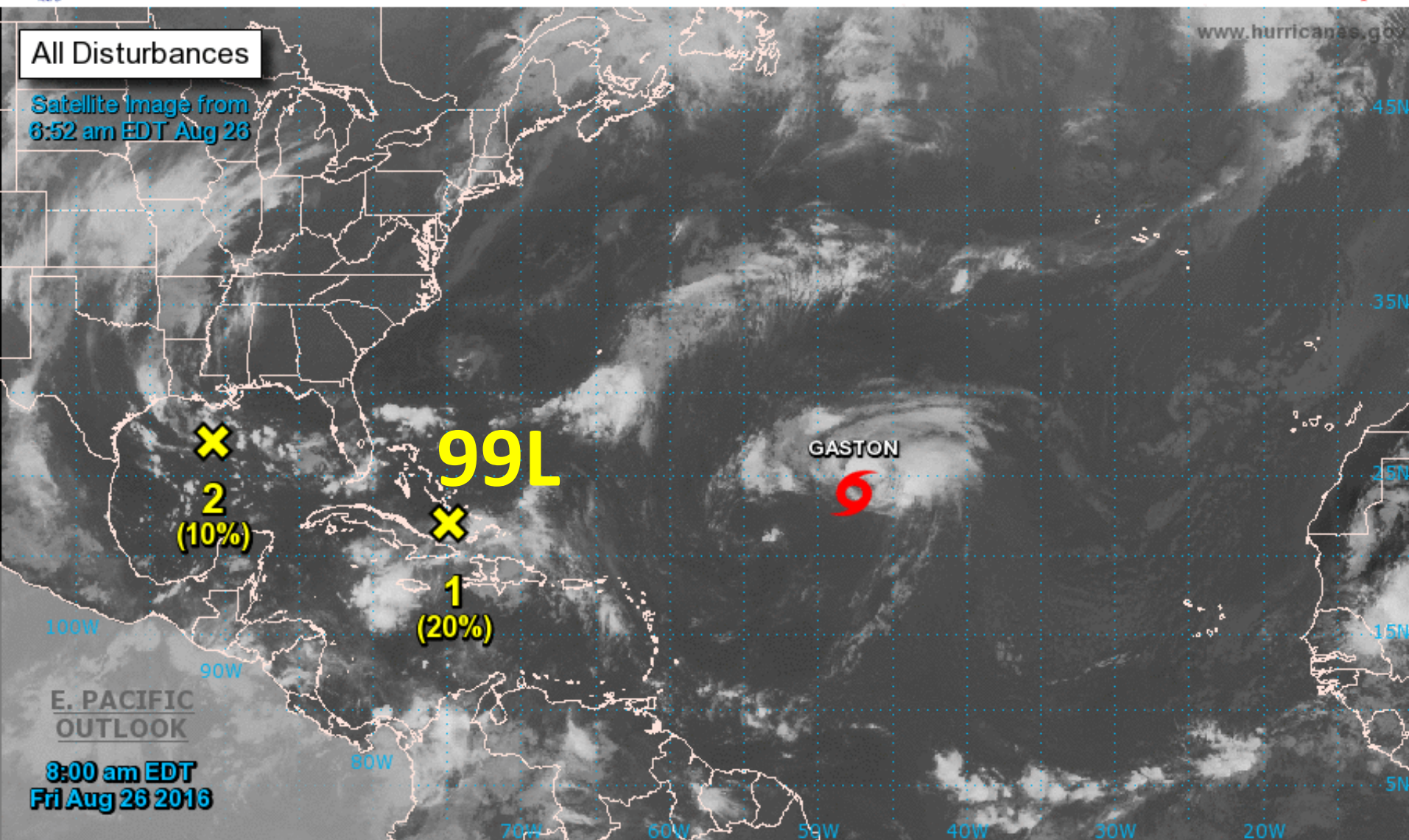






# Two-Day Graphical Tropical Weather Outlook

National Hurricane Center Miami, Florida



Current Disturbances and Two-Day Cyclone Formation Chance: < 40% 40-60% > 60%

Tropical or Sub-Tropical Cyclone: Depression Storm Hurricane

Post-Tropical Cyclone Remnants





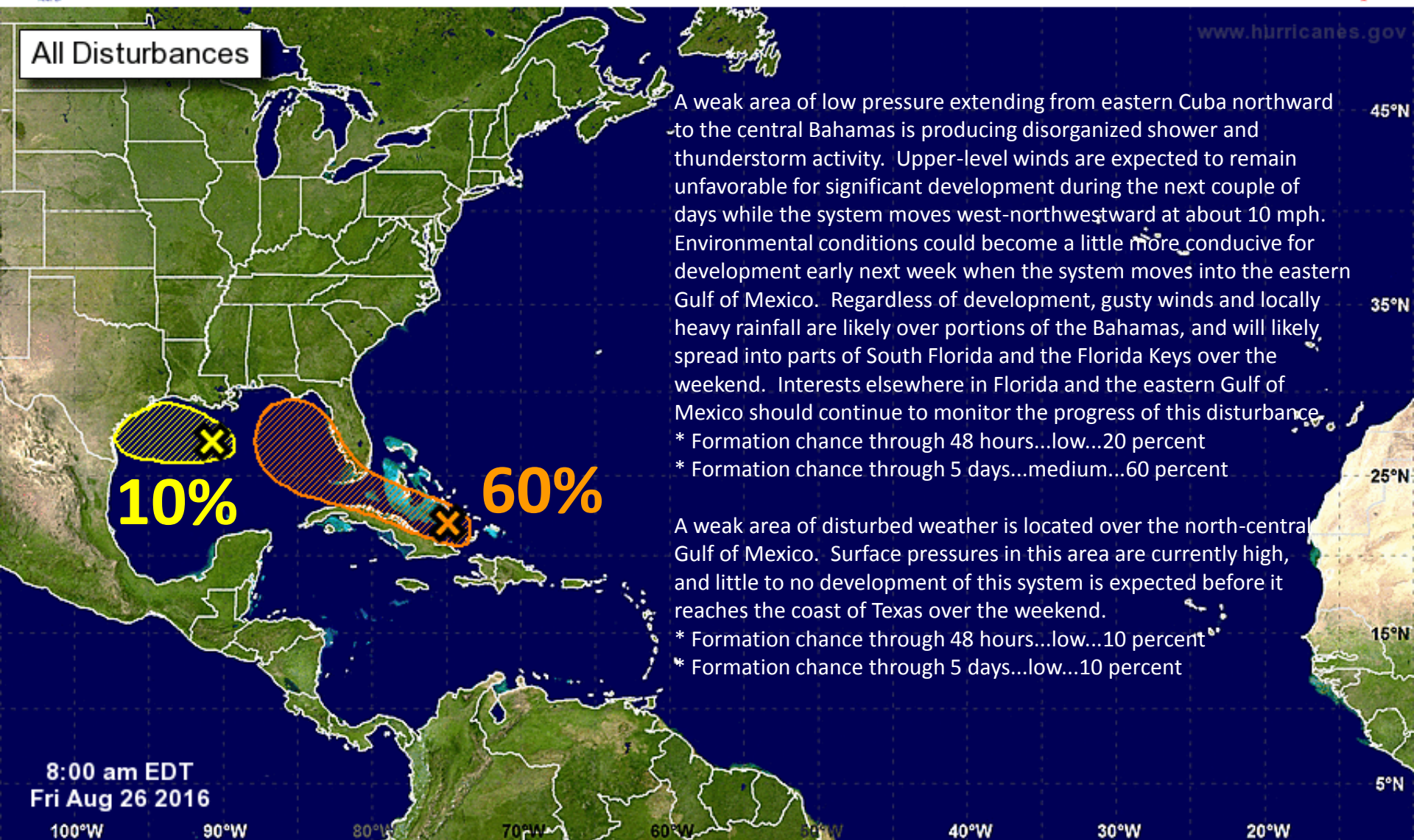
# Five-Day Graphical Tropical Weather Outlook

National Hurricane Center Miami, Florida



www.hurricanes.gov

All Disturbances



Tropical Cyclone Formation Potential for the Five-Day Period Ending at 8:00 am EDT Wed Aug 31 2016

Chance of Cyclone Formation in Five Days: ■ Low < 40% ■ Medium 40-60% ■ High > 60%

X indicates current disturbance location; shading indicates potential formation area.



**Invest 99L**

8 AM Fri Aug 26 2016

Position 21.8 74.7 W

Maximum Winds 30 mph

Movement W at 9 mph

Blue Marble basemap imagery courtesy NASA

Satellite 1:18 PM UTC  
1:18 PM GMT

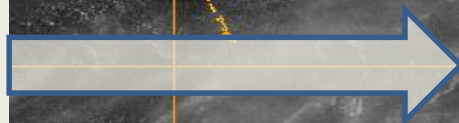




08/26/16 0600Z 99L INVEST  
08/26/16 1130Z GOES-13 VIS

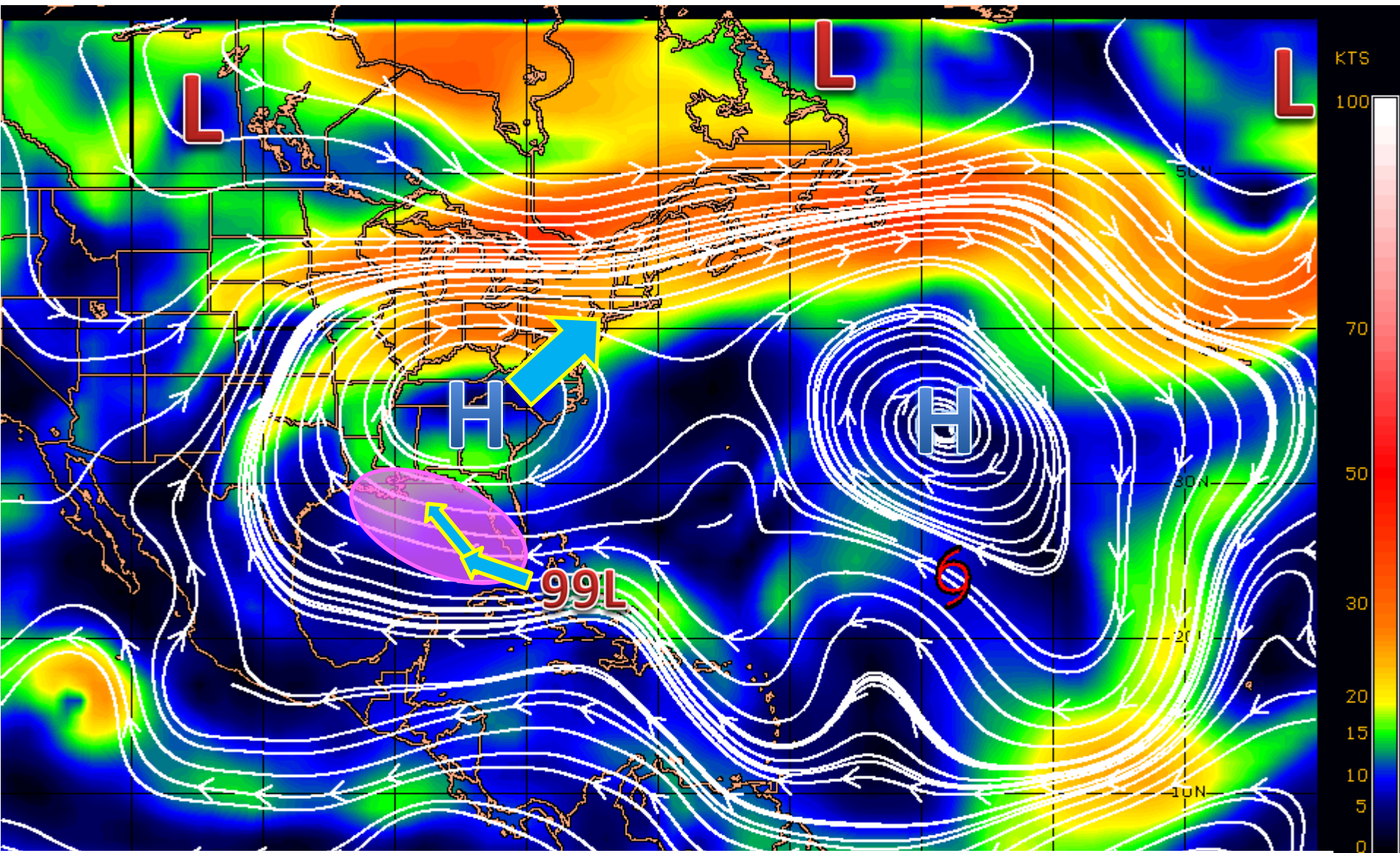
Thunderstorms  
still displaced to  
the southeast

Low-level  
center of low  
pressure,  
center still not  
well-defined



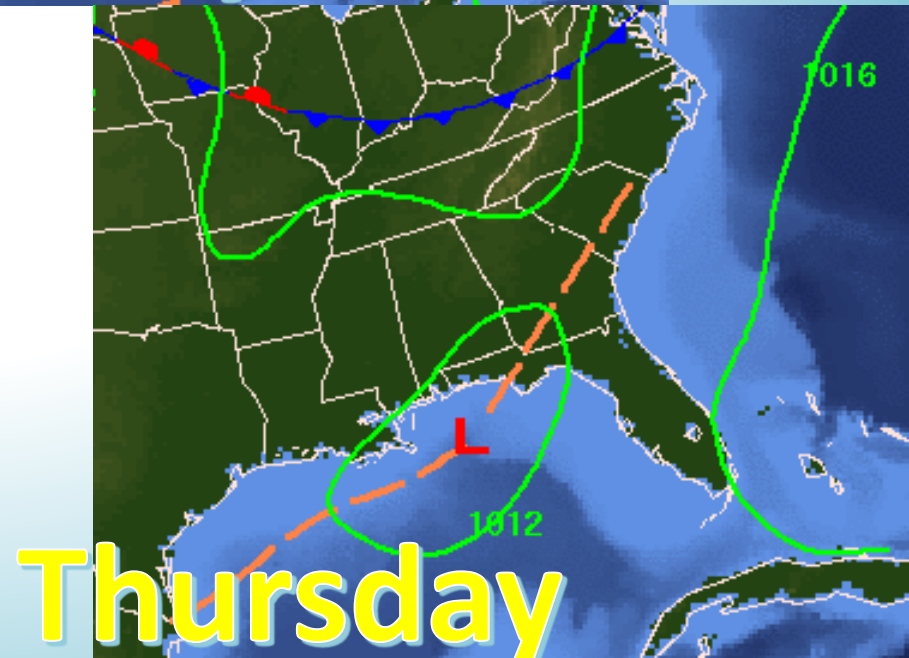
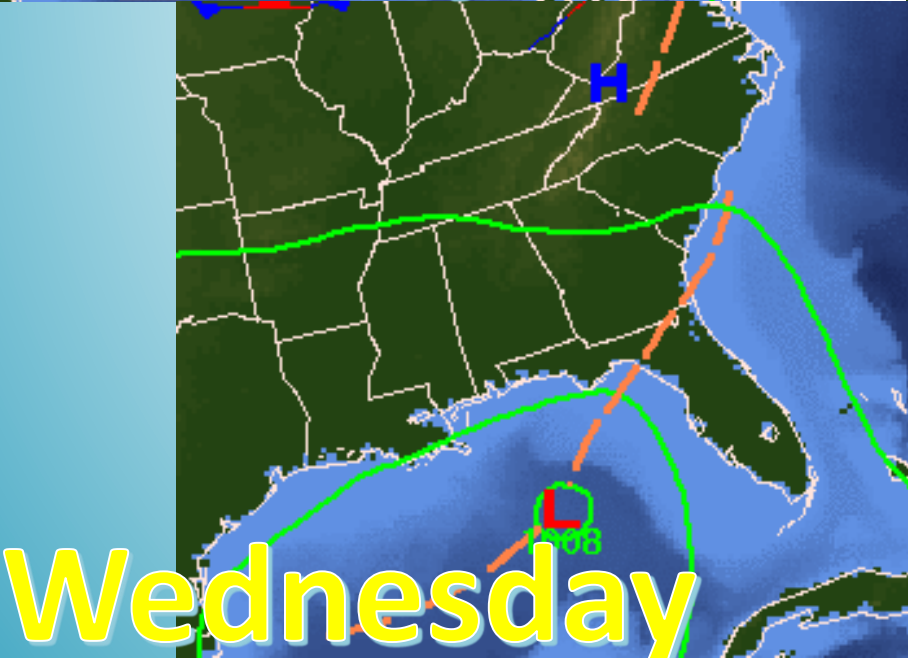
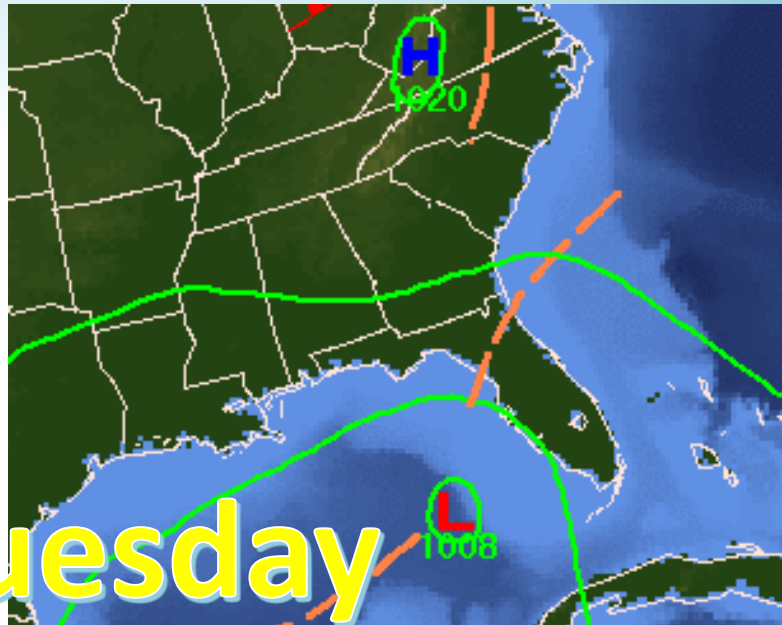
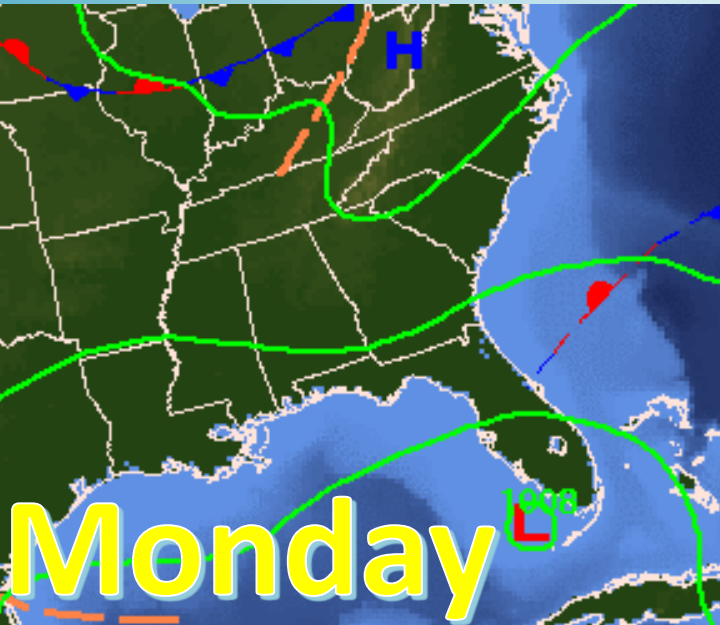


# Steering Currents



99L is likely to continue moving west-northwest around high pressure located over the southeastern U.S. This high will shift gradually to the northeast over the next few days and will establish a southeasterly wind pattern over and around Florida which will allow 99L to move more northwest and eventually north once it enters the Gulf of Mexico.

# Forecast Weather Maps

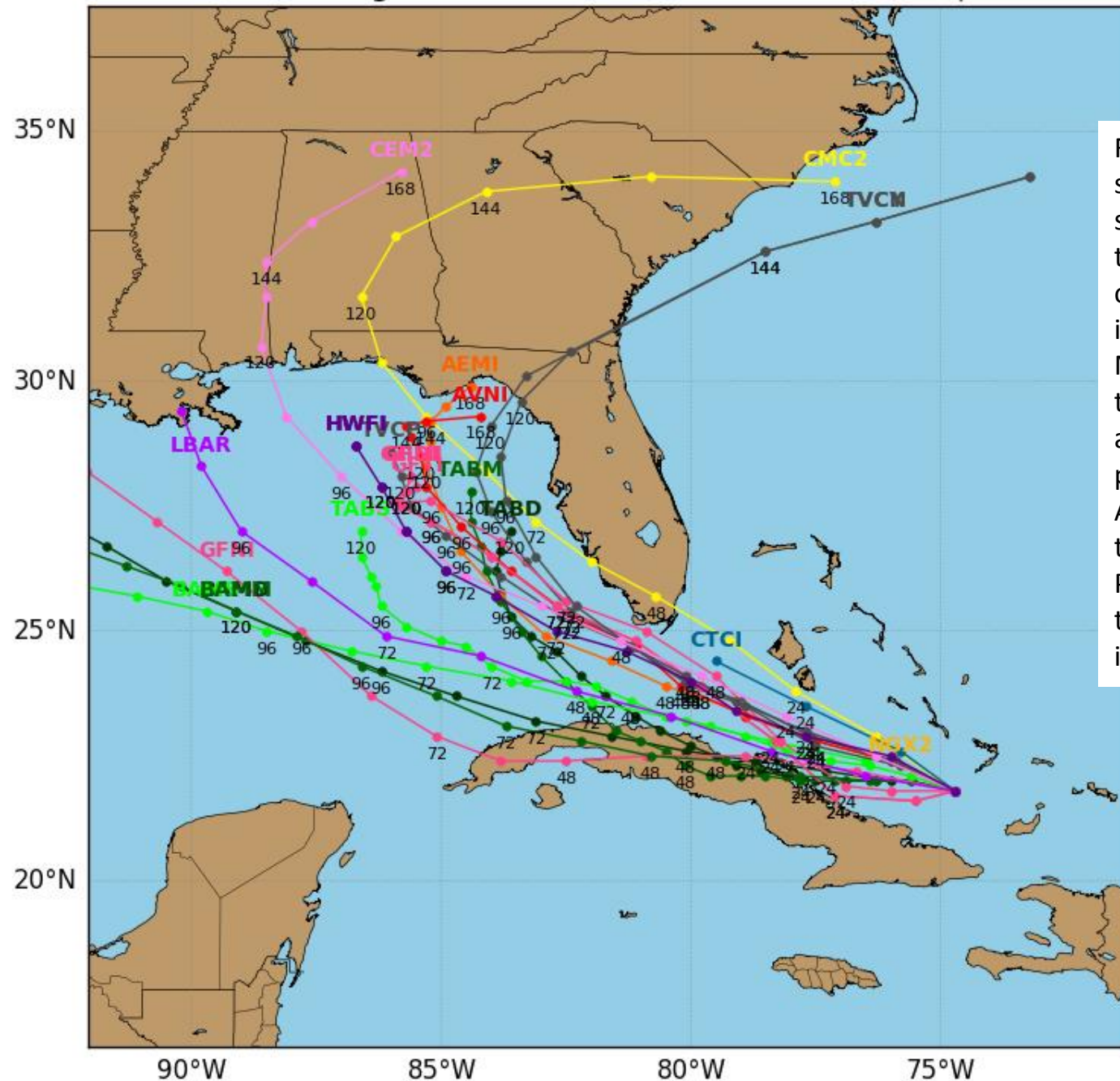




# Invest 99L Model Track Guidance

Initialized at 12z Aug 26 2016

Levi Cowan - tropicaltidbits.com



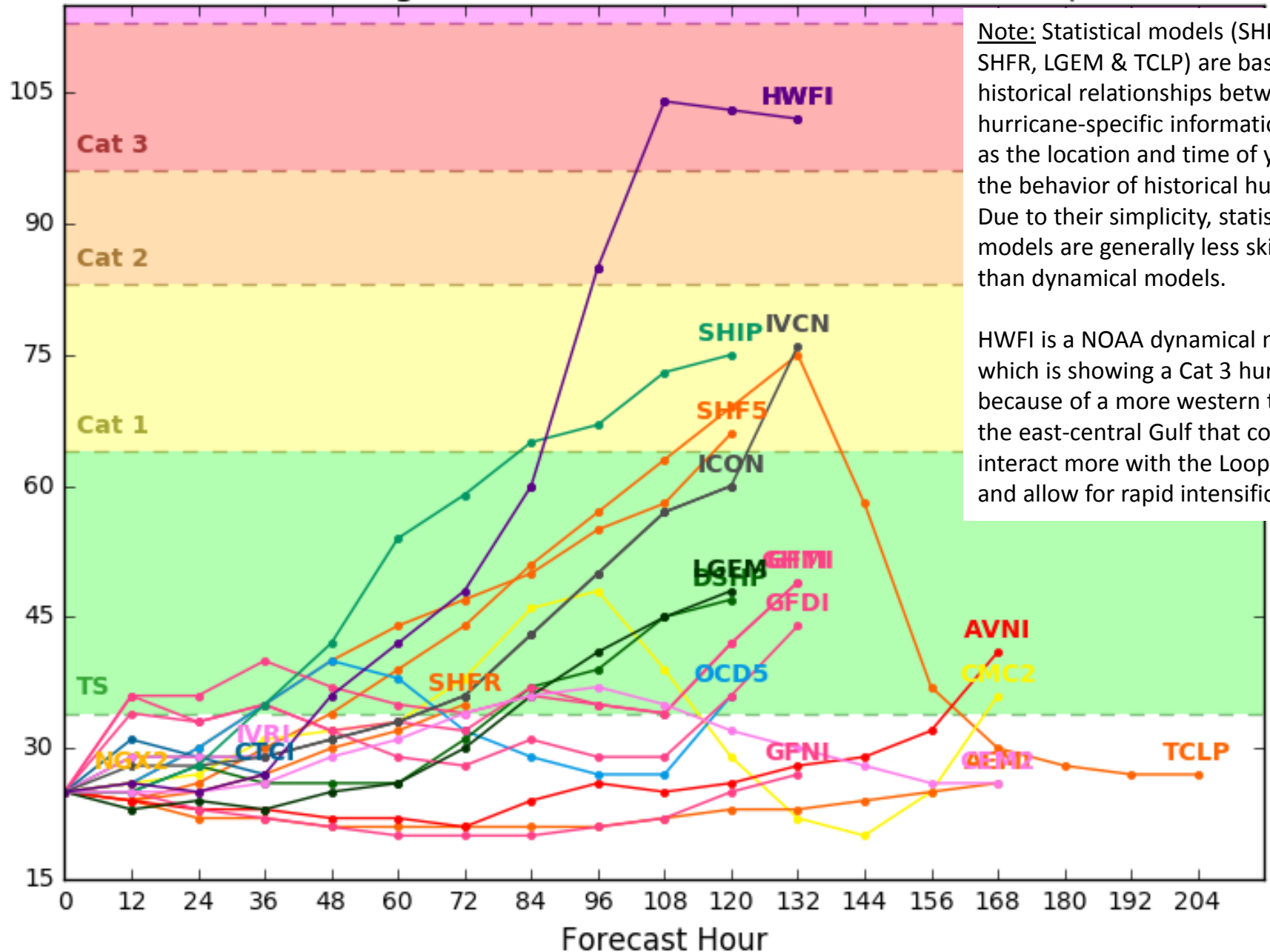
Forecast tracks have shifted east since yesterday afternoon, showing 99L to take a northwest track through the Florida Straits or through the Florida Keys and into the Gulf of Mexico Sunday or Monday. A sharp north turn is then expected due to a weakening and northeast-moving high pressure system over the Mid-Atlantic states, sending 99L on a track paralleling the western Peninsula and potentially towards the Florida Panhandle or Big Bend in 5-6 days.

# Invest 99L Model Intensity Guidance

Initialized at 12z Aug 26 2016

Levi Cowan - [tropicaltidbits.com](http://tropicaltidbits.com)

Wind Speed (kt)

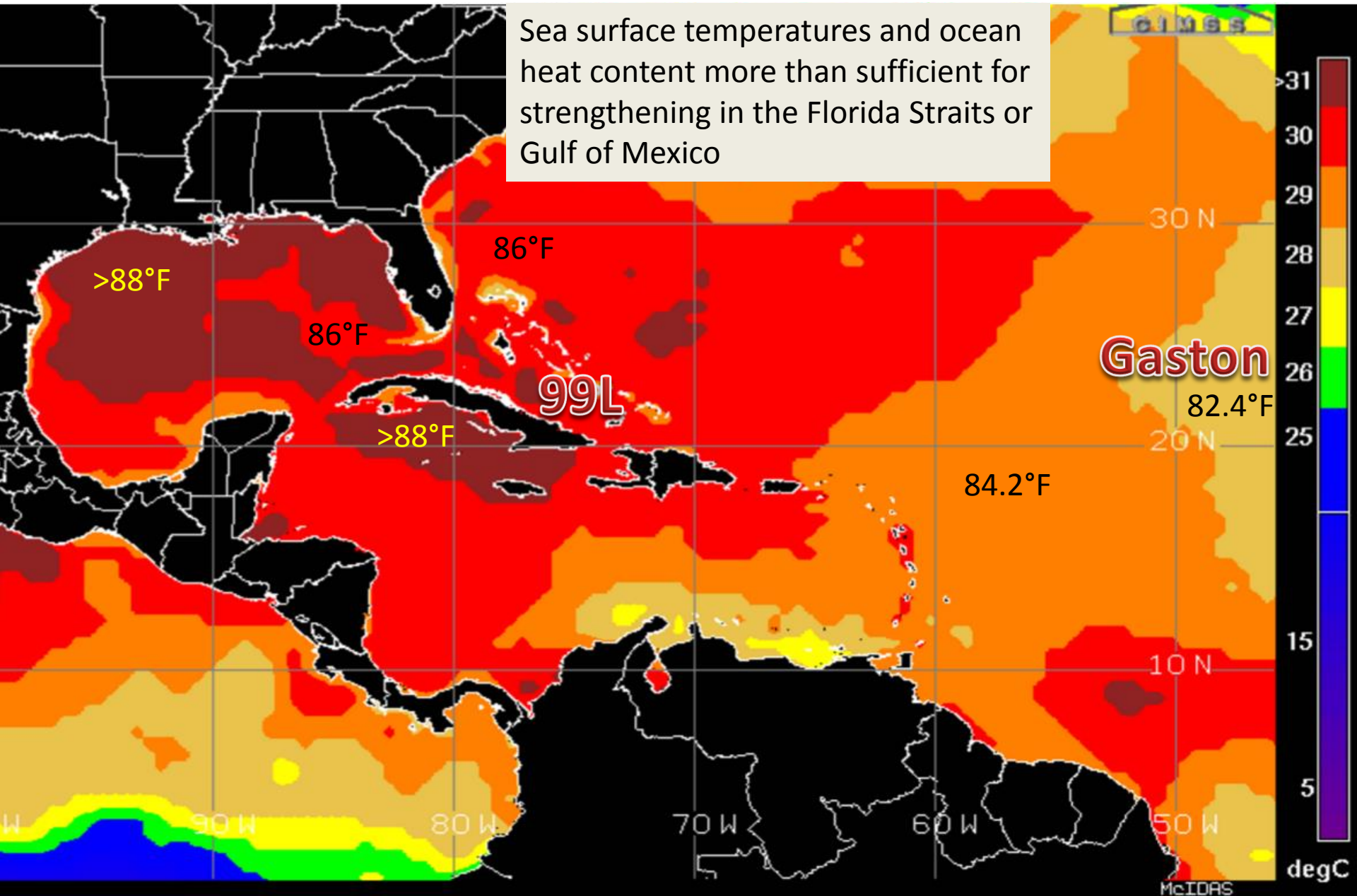


Note: Statistical models (SHF5, SHIP, SHFR, LGEM & TCLP) are based on historical relationships between hurricane-specific information, such as the location and time of year, and the behavior of historical hurricanes. Due to their simplicity, statistical models are generally less skillful than dynamical models.

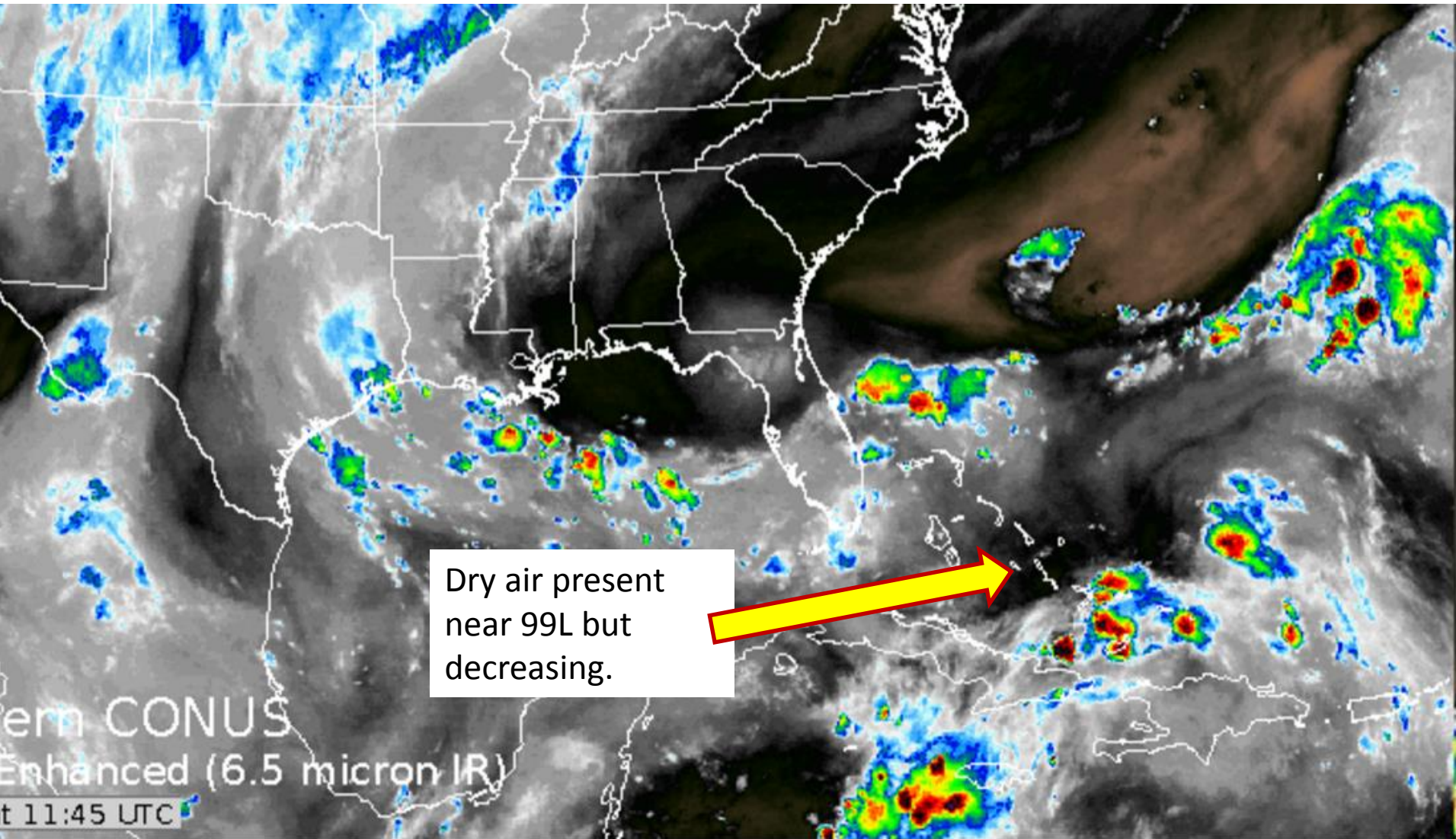
HWFI is a NOAA dynamical model, which is showing a Cat 3 hurricane because of a more western track in the east-central Gulf that could interact more with the Loop Current and allow for rapid intensification.



# Sea Surface Temperatures Near 99L

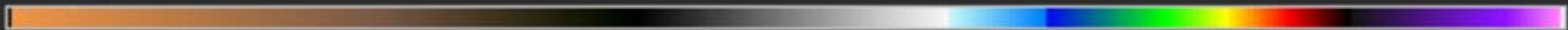


# Invest 99L Water Vapor Image



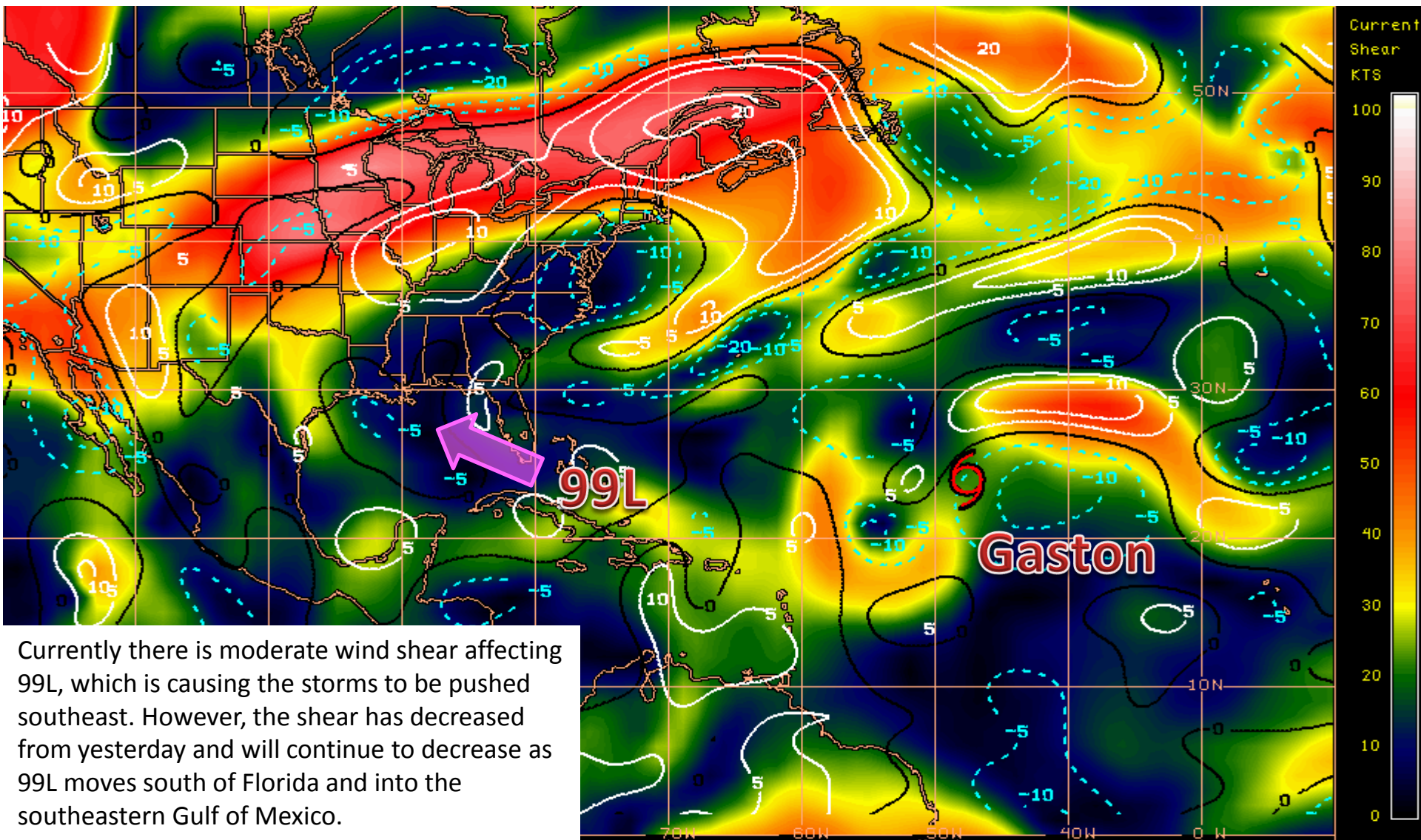
Dry

Saturated





# Current Wind Shear (shaded) and Shear Tendency (contours)



Shear Tendency (KTS) Over Past 24 Hours: Increasing ——— Decreasing - - - -

GOES-EAST 24 HOUR WIND SHEAR TENDENCY PRODUCT

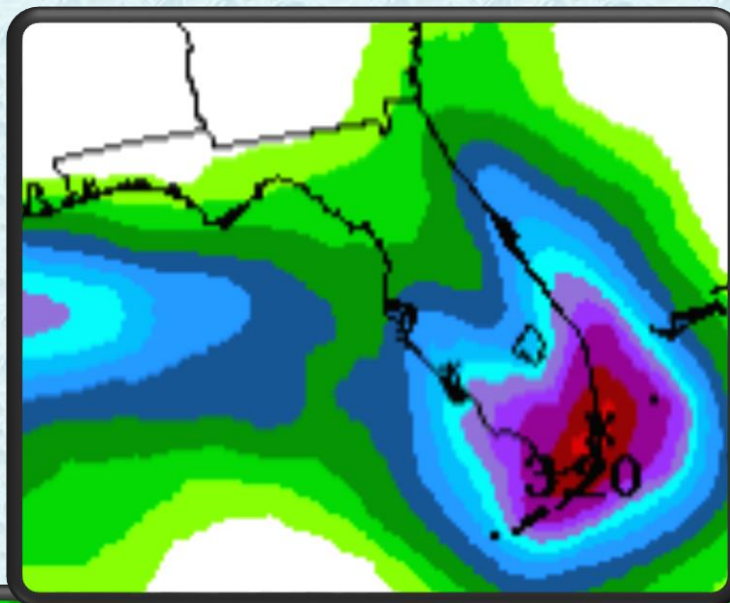
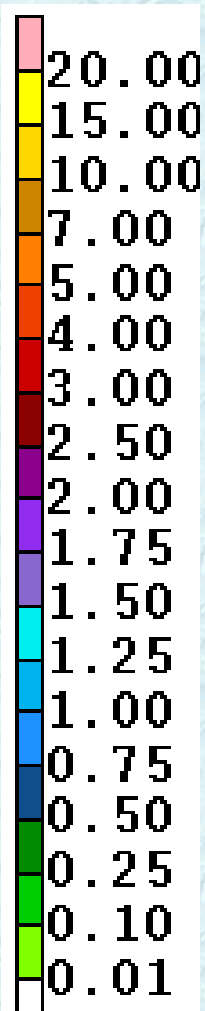
0900 UTC

26AUG16

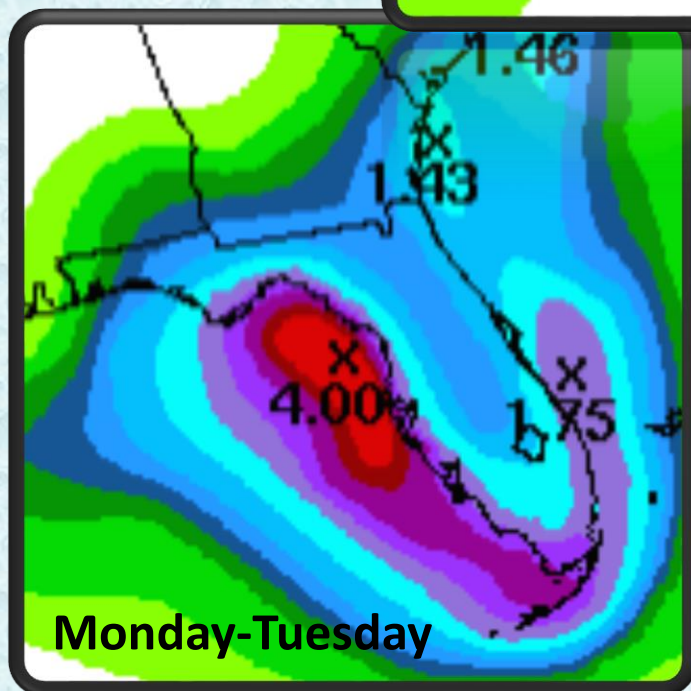
UW-CIMSS

McIDAS

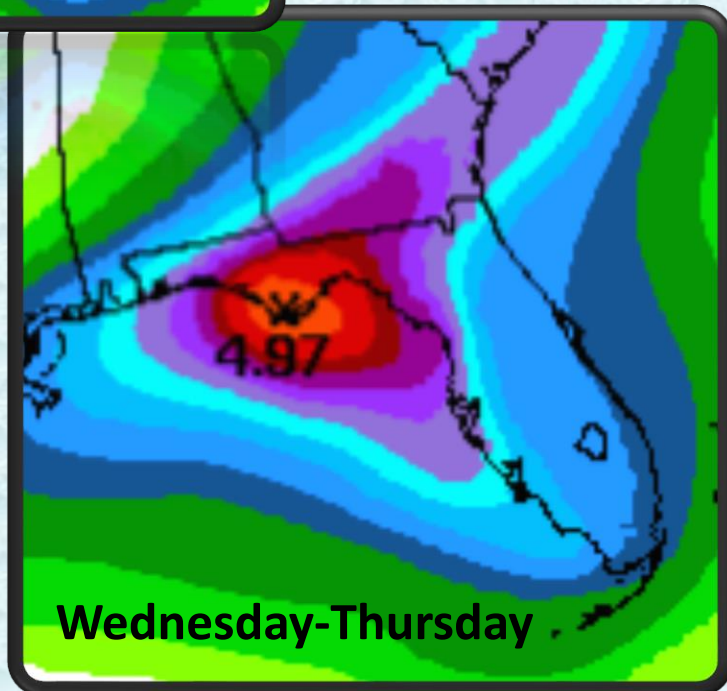
# ***Current Rainfall Forecast***



**Friday-Sunday**



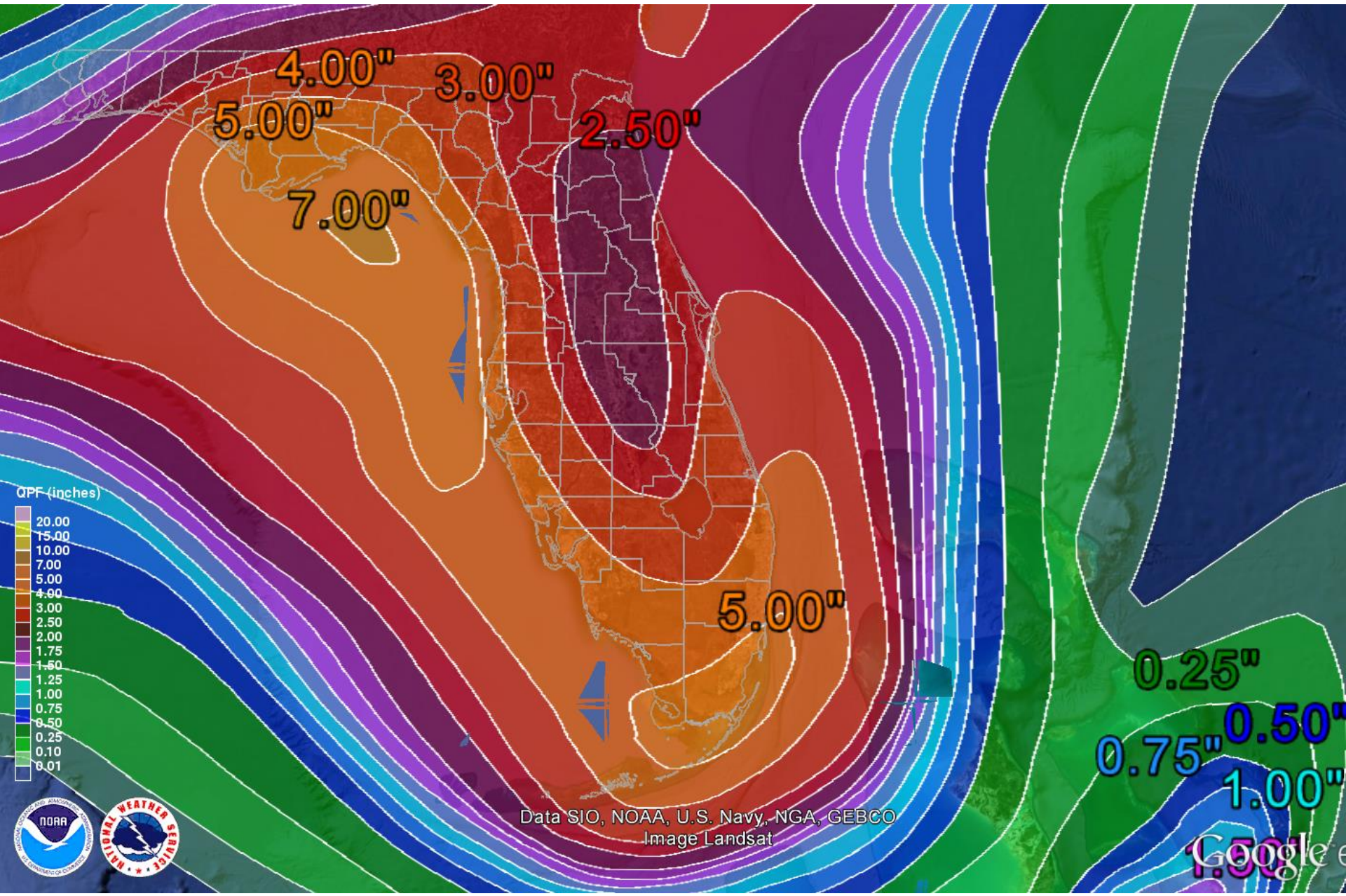
**Monday-Tuesday**



**Wednesday-Thursday**



# Forecast Rainfall Total – Next 7 Days





# Tropical Storm Gaston

5 AM EDT Fri Aug 26 2016

Position 23.9 N 47.6 W

Maximum Winds 65 mph

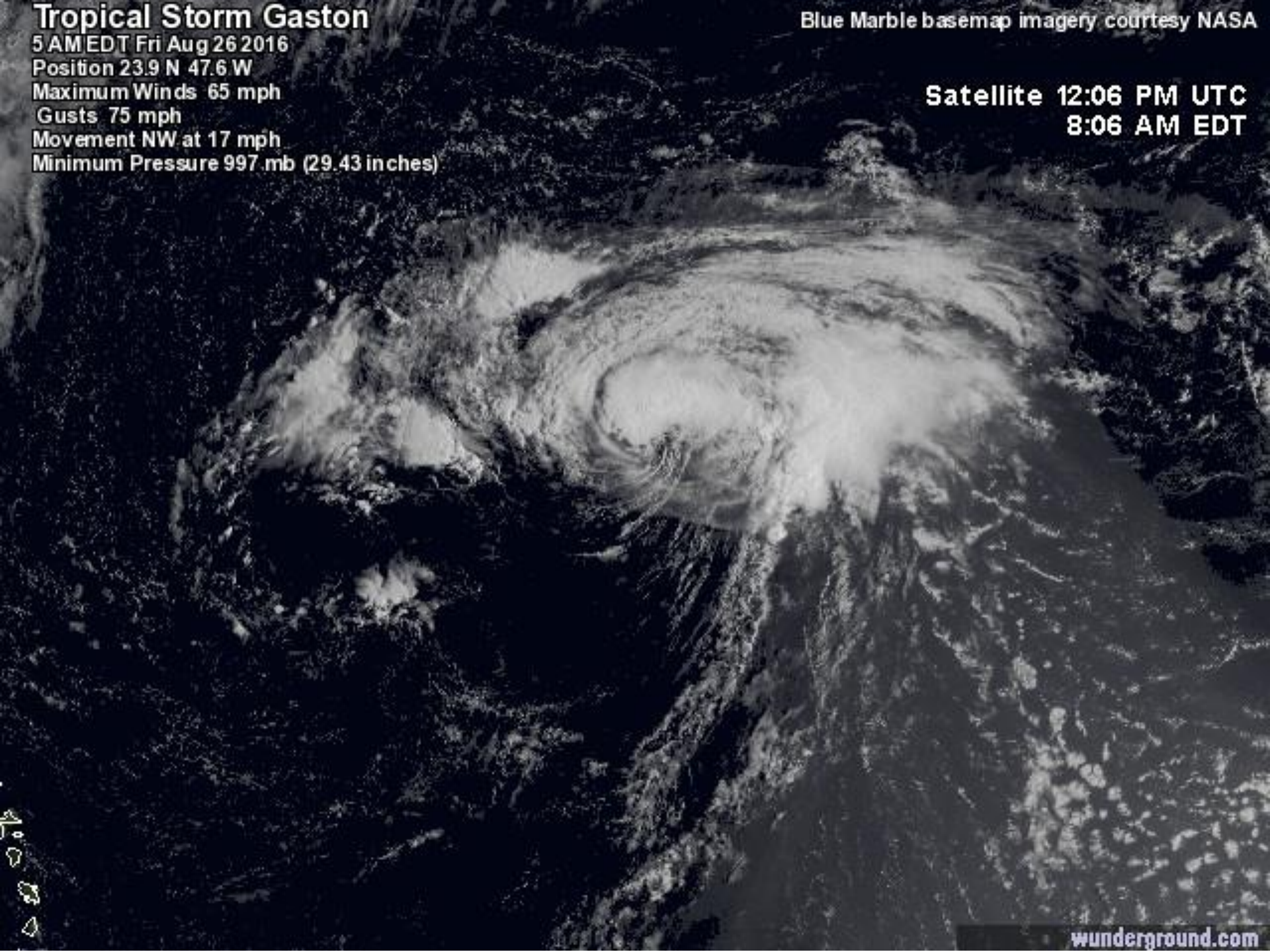
Gusts 75 mph

Movement NW at 17 mph

Minimum Pressure 997 mb (29.43 inches)

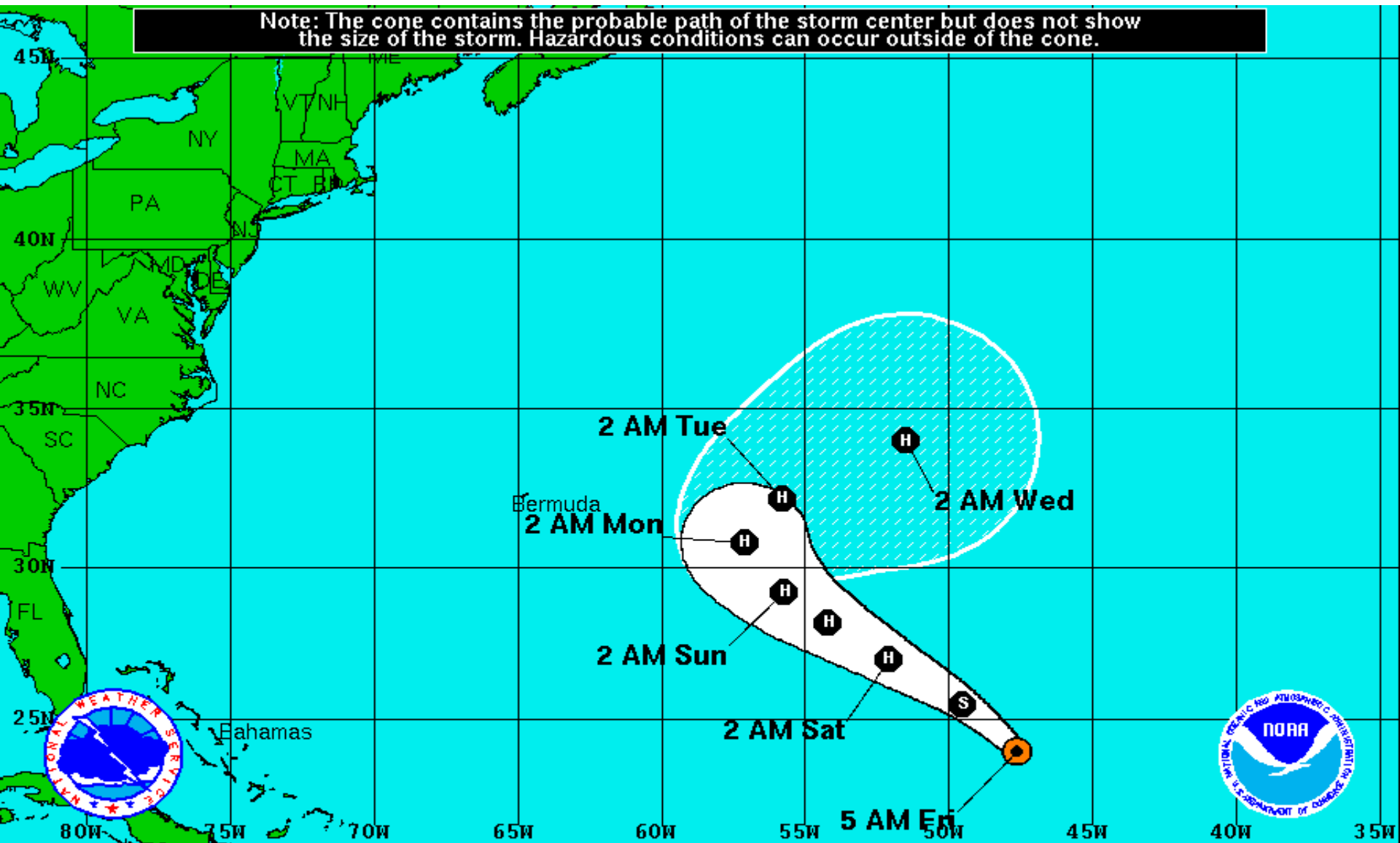
Blue Marble basemap imagery courtesy NASA

Satellite 12:06 PM UTC  
8:06 AM EDT









Note: The cone contains the probable path of the storm center but does not show the size of the storm. Hazardous conditions can occur outside of the cone.



**Tropical Storm Gaston**  
 Friday August 26, 2016  
 5 AM EDT Advisory 15  
 NWS National Hurricane Center

**Current Information:**   
 Center Location 23.9 N 47.6 W  
 Max Sustained Wind 65 mph  
 Movement NW at 17 mph

**Forecast Positions:**  
 Tropical Cyclone  Post-Tropical  
 Sustained Winds: D < 39 mph  
 S 39-73 mph H 74-110 mph M > 110mph

**Potential Track Area:**  
 Day 1-3  Day 4-5

**Watches:**  
 Hurricane  Trop.Storm

**Warnings:**  
 Hurricane  Trop.Storm

## Summary:

- An area of low pressure associated with a tropical wave located between the central Bahamas and eastern Cuba, designated as Invest Area 99L, remains disorganized with showers and thunderstorms displaced to the southeast of the apparent center of low pressure.
- As a result, The Air Force Reserve Hurricane Hunter aircraft scheduled to investigate this system this morning has been canceled.
- Dry air and wind shear over the low is currently preventing any development from taking place and will likely remain that way through much of the weekend.
- However, atmospheric conditions in the southeastern Gulf of Mexico are more favorable for development.
- As a result, the system only has a 20% (low) chance of development within 48 hours, and a 60% (medium) chance of development through the next five days.
- Computer track models coming into better agreement but still lack consistency, which is common with weak and developing systems.
- Most models now show 99L on a northwest track through the Florida Straits or through the Florida Keys and into the Gulf of Mexico Sunday or Monday. A turn to the north is then expected due to a weakening and northeast-moving high pressure system over the Mid-Atlantic states, sending 99L on a track paralleling the western Peninsula and potentially towards the Florida Panhandle or Big Bend in 5-6 days.
- Also, there is still disagreement in the models regarding the possible intensity of 99L. A track closer to the Florida Peninsula would keep it weaker while a more westward track towards the central Gulf of Mexico could allow for more strengthening.
- We will continue to monitor the progress of this system for the possibility of tropical development and will have a better idea of where this system is headed and how strong it might be once it passes through the Florida Straits in 48-72 hours.
- The next name on the 2016 Atlantic Storm name list is Hermine (pronounced Er-meen).



- Elsewhere, Tropical Storm Gaston continues to move quickly northwest with maximum sustained winds near 65 mph.
- A slower forward movement is expected over the weekend, with a turn to the north and northeast early next week. Gaston is expected to again become a hurricane over the weekend.
- A small area of disorganized thunderstorms in the west-central Gulf of Mexico only has a 10% chance of development before moving inland over Texas this weekend.

### **Florida Outlook:**

- At this current time, Invest 99L poses a *probable threat* to Florida.
- Models continue to struggle in forecasting both the possible track and intensity of this system so intense monitoring is recommended.
- Regardless of development, it does appear that portions of South Florida and the Keys will have an increasing threat of heavy rainfall and rip currents this weekend. Gusty winds and isolated waterspouts cannot be ruled out, but are not considered a high risk.
- Any impacts to the Florida Gulf Coast are contingent on the eventual track and strength of 99L.
- Any specific impacts are considered to be low confidence at this time but heavy rainfall will be possible Monday-Thursday of next week, especially near the coast, which could cause flooding concerns.
- Gaston does not pose a threat to Florida or the U.S.

Another briefing packet will be issued this afternoon. For more information on this system, please visit the NHC website at [www.nhc.noaa.gov](http://www.nhc.noaa.gov)



# TROPICAL UPDATE

Created by:

Amy Godsey, Chief State Meteorologist  
[amy.godsey@em.myflorida.com](mailto:amy.godsey@em.myflorida.com)

State Meteorological Support Unit  
Florida Division of Emergency  
Management

Users wishing to subscribe (approval pending) to this distribution list, register at [https://public.govdelivery.com/accounts/FLDEM/subscriber/new?topic\\_id=SERT\\_Met\\_Tropics](https://public.govdelivery.com/accounts/FLDEM/subscriber/new?topic_id=SERT_Met_Tropics).

Other reports available for subscription are available at <https://public.govdelivery.com/accounts/FLDEM/subscriber/new?preferences=true>