



TROPICAL UPDATE

10 AM EDT

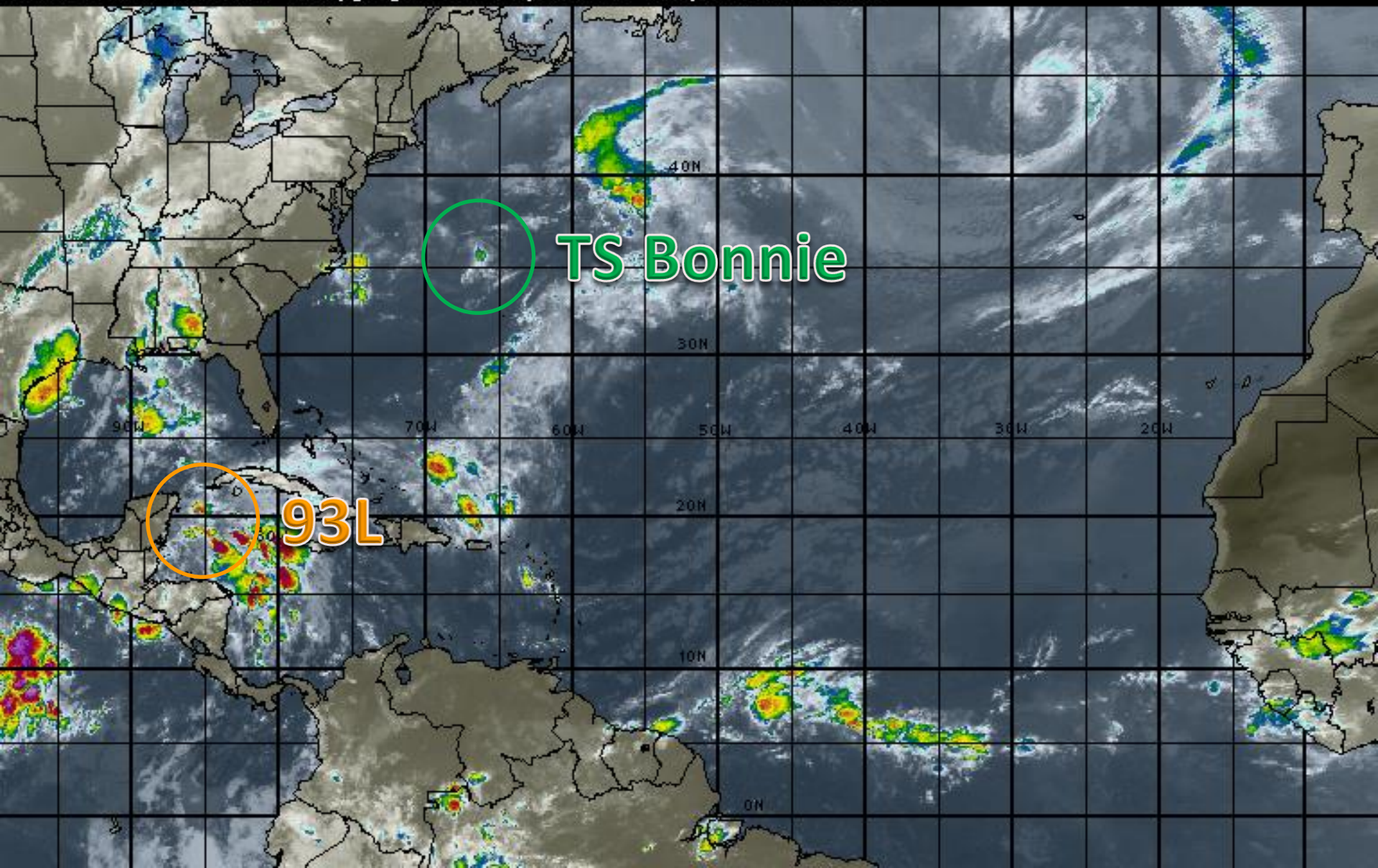
Saturday, June 4, 2016

Invest 93L

This update is intended for government and emergency response officials, and is provided for informational and situational awareness purposes only. Forecast conditions are subject to change based on a variety of environmental factors. For additional information, or for any life safety concerns with an active weather event please contact your County Emergency Management or Public Safety Office, local National Weather Service forecast office or visit the National Hurricane Center website at www.nhc.noaa.gov.

Atlantic Basin Satellite Image

12:00 04-JUN-2016 GMT ©Copyright WSI Corporation <http://www.wsi.com>





Two-Day Graphical Tropical Weather Outlook

National Hurricane Center Miami, Florida



All Disturbances

Satellite Image from
7:30 am EDT Jun 4

BONNIE



1
(70%)



E. PACIFIC
OUTLOOK

8:00 am EDT
Sat Jun 4 2016

Current Disturbances and Two-Day Cyclone Formation Chance: ☒ < 40% ☒ 40-60% ☒ > 60%

Tropical or Sub-Tropical Cyclone: ○ Depression 🌀 Storm 🌀 Hurricane

⊗ Post-Tropical Cyclone ✕ Remnants



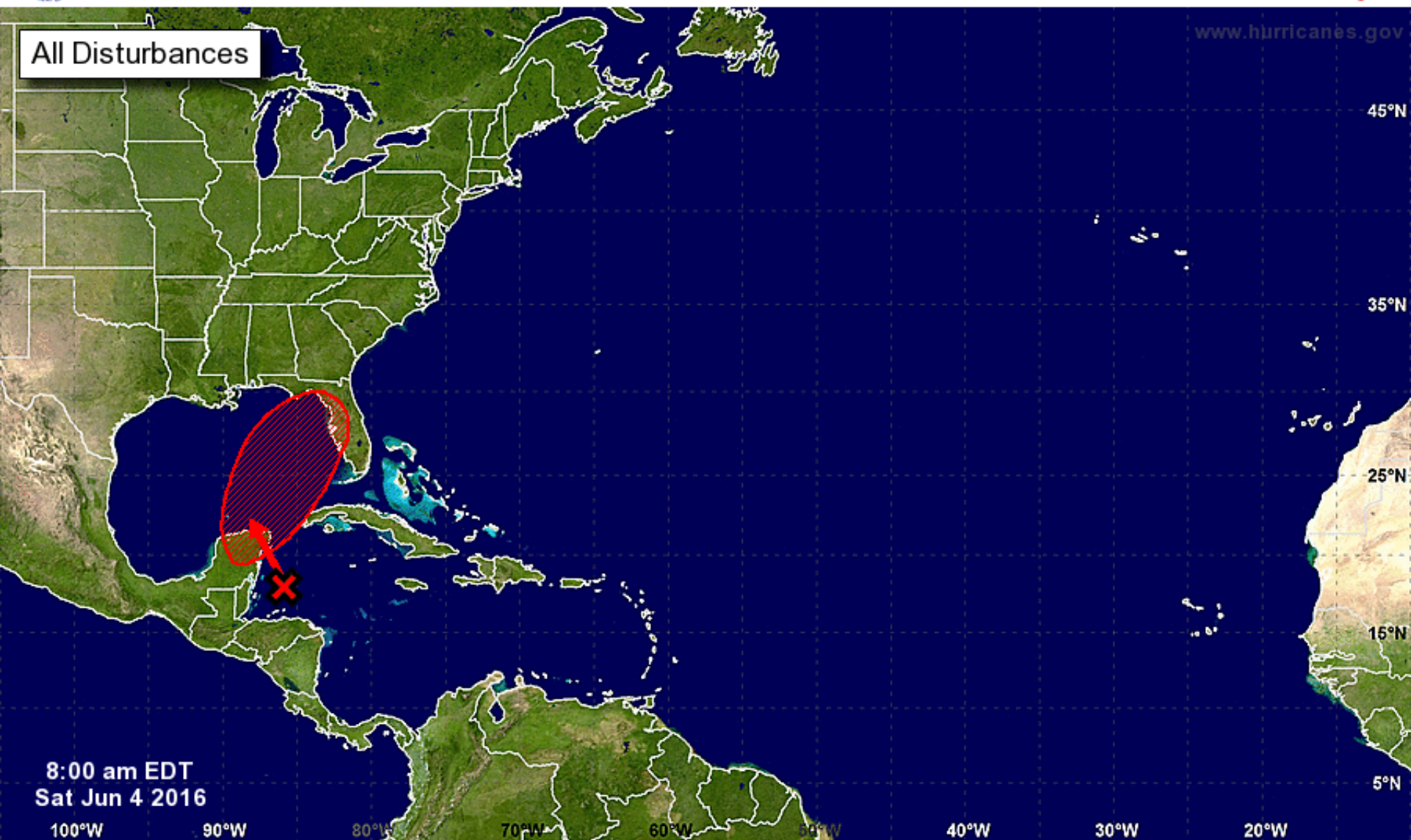
Five-Day Graphical Tropical Weather Outlook

National Hurricane Center Miami, Florida



www.hurricanes.gov

All Disturbances



Tropical Cyclone Formation Potential for the Five-Day Period Ending at 8:00 am EDT Thu Jun 9 2016

Chance of Cyclone Formation in Five Days: ■ Low < 40% ■ Medium 40-60% ■ High > 60%

X indicates current disturbance location; shading indicates potential formation area.

Invest 93L

8 AM Sat Jun 4 2016

Position 16.6 86.6 W

Maximum Winds 35 mph

Movement W at 10 mph

Blue Marble basemap imagery courtesy NASA

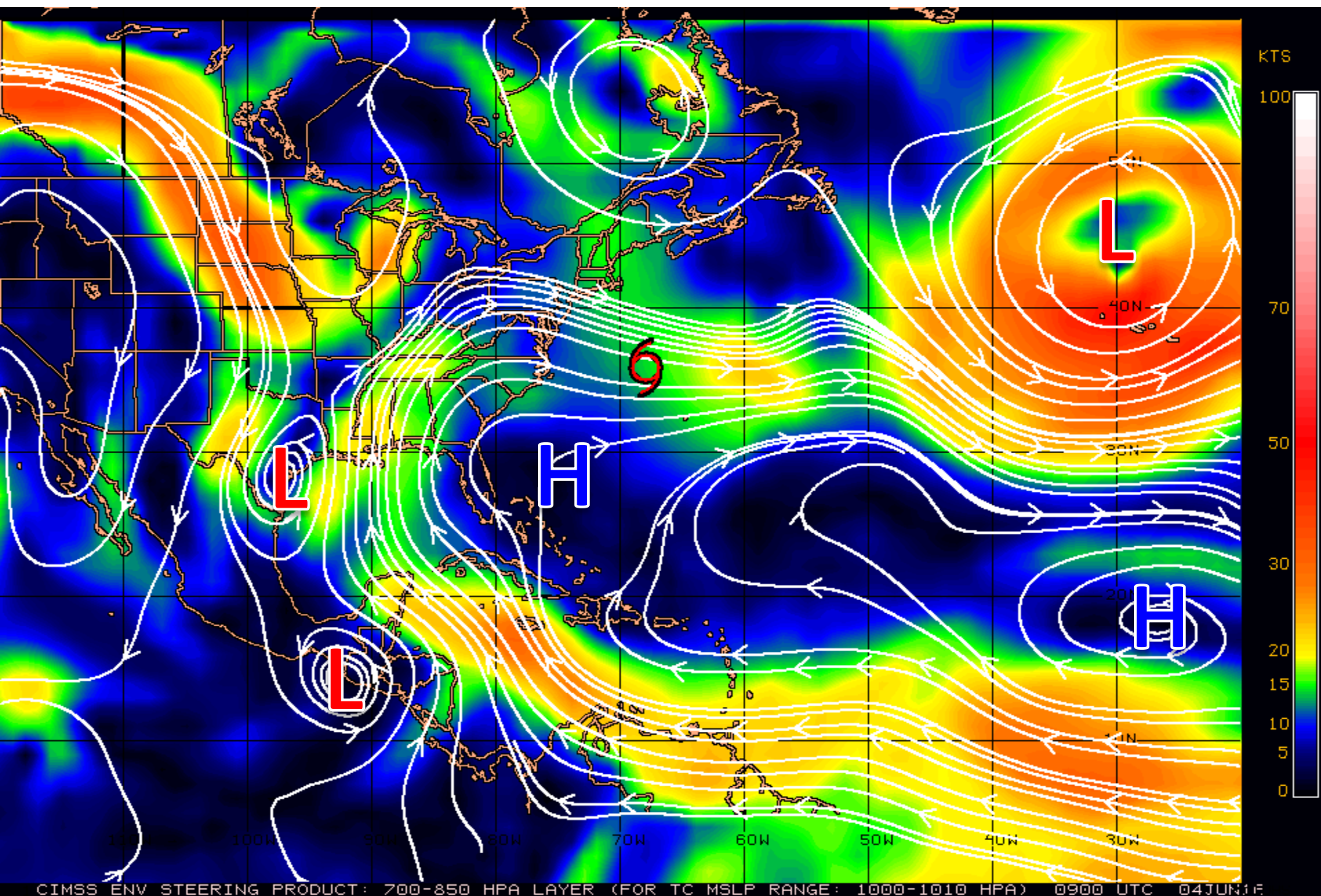
Satellite 1:18 PM UTC

1:18 PM GMT

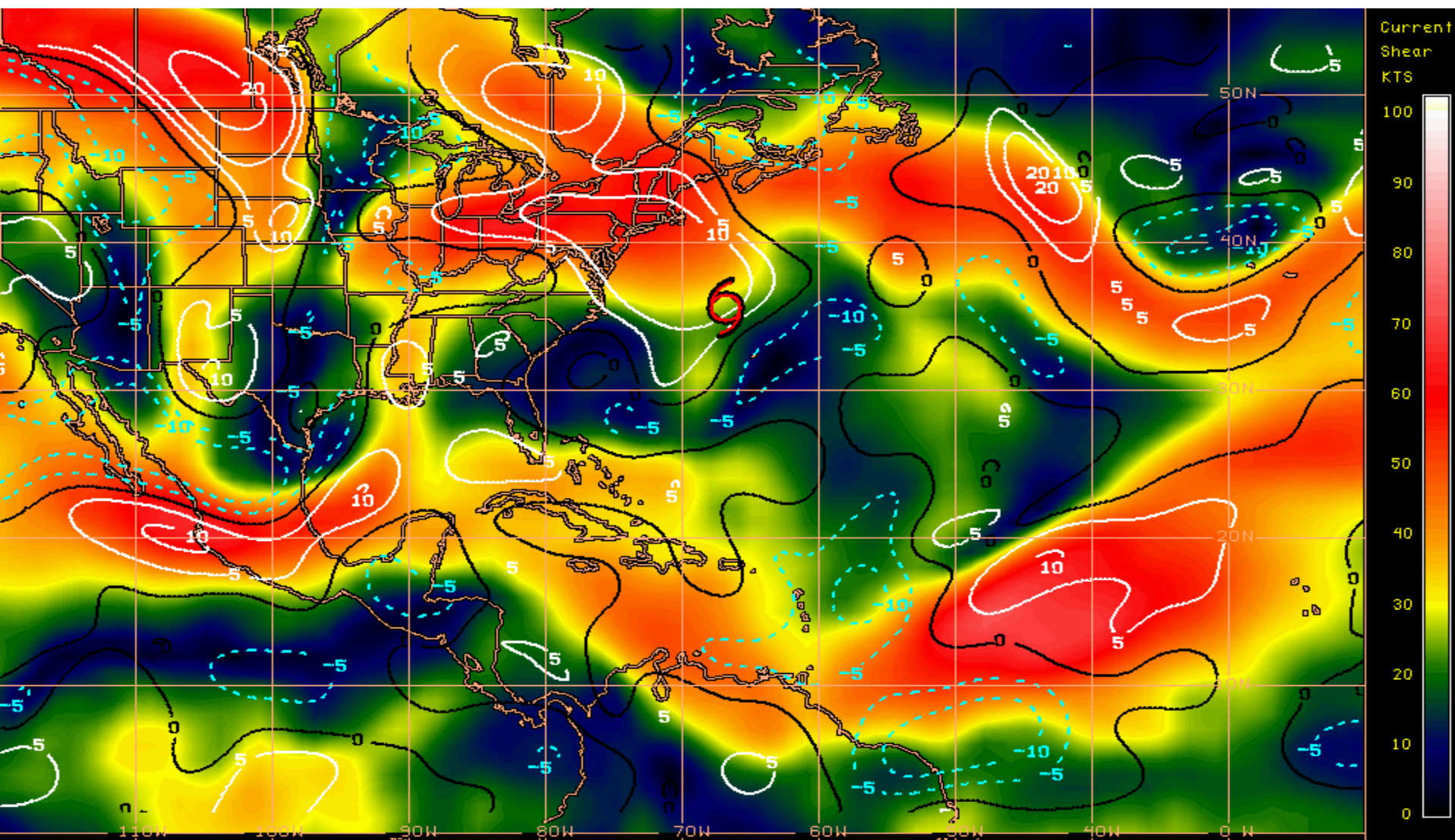


wunderground.com

Steering Currents

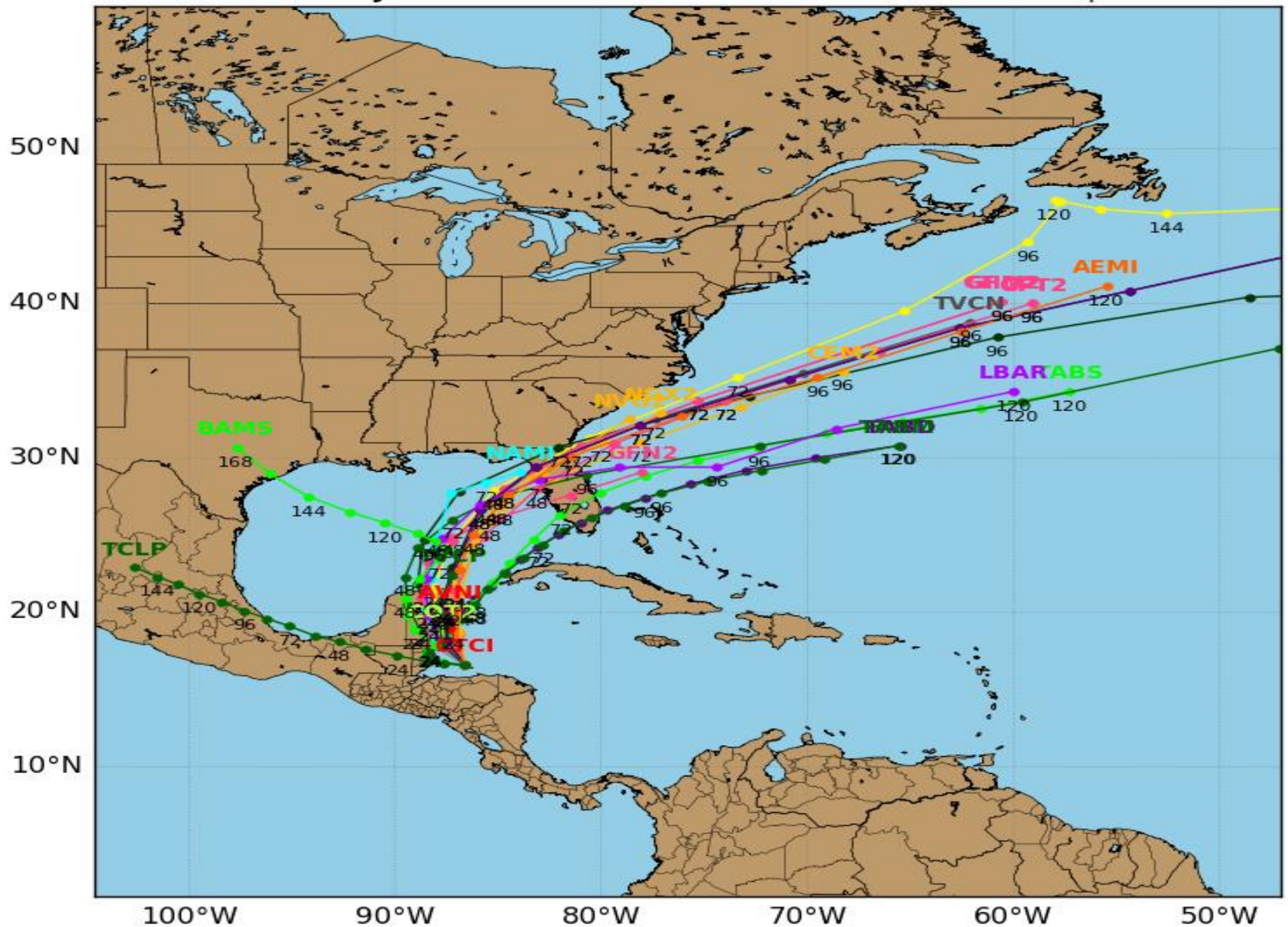


Current Wind Shear (Shaded) and Shear Tendency (Lines)



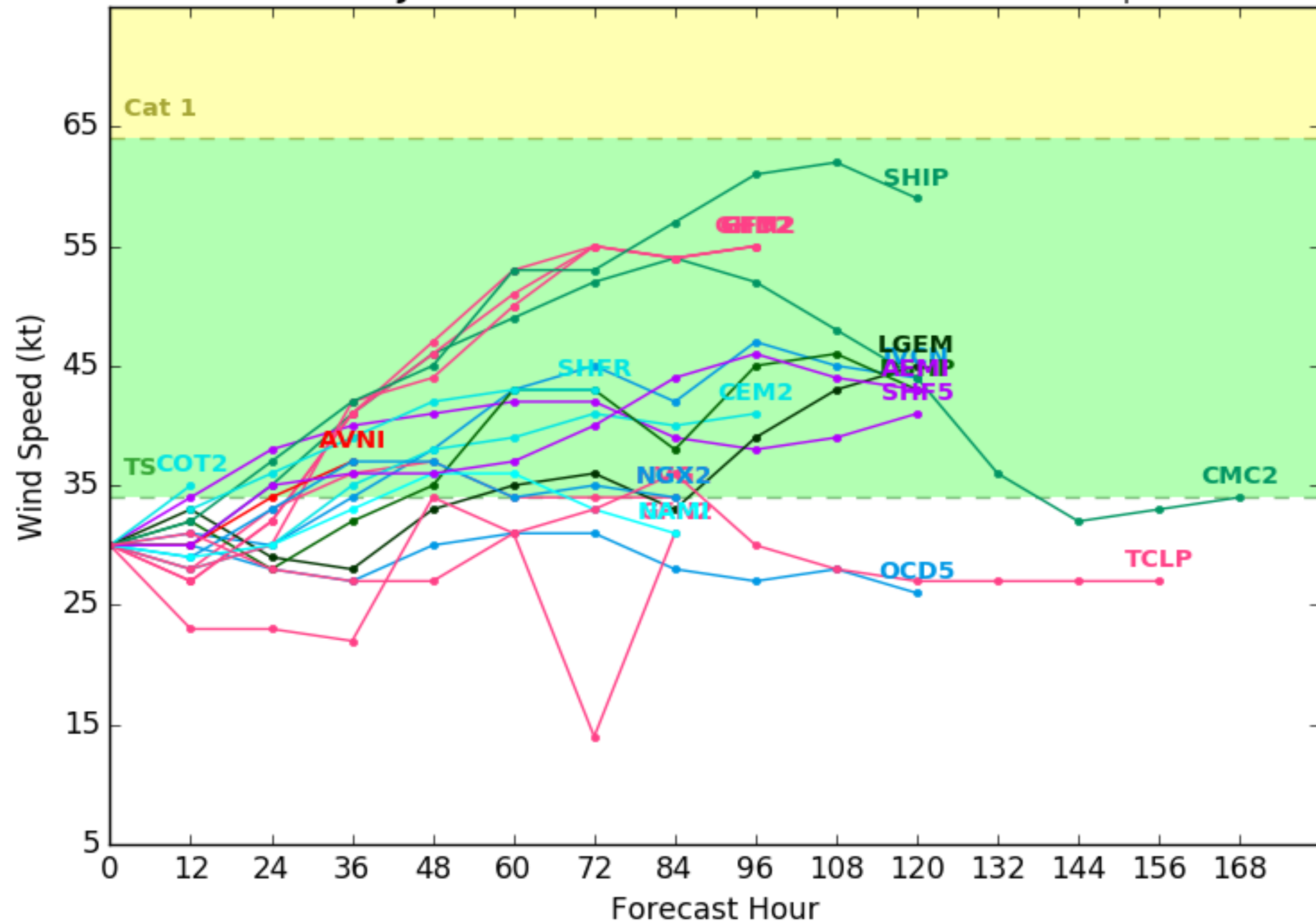
Shear Tendency (KTS) Over Past 24 Hours: Increasing — Decreasing ----

Levi Cowan - tropicaltidbits.com

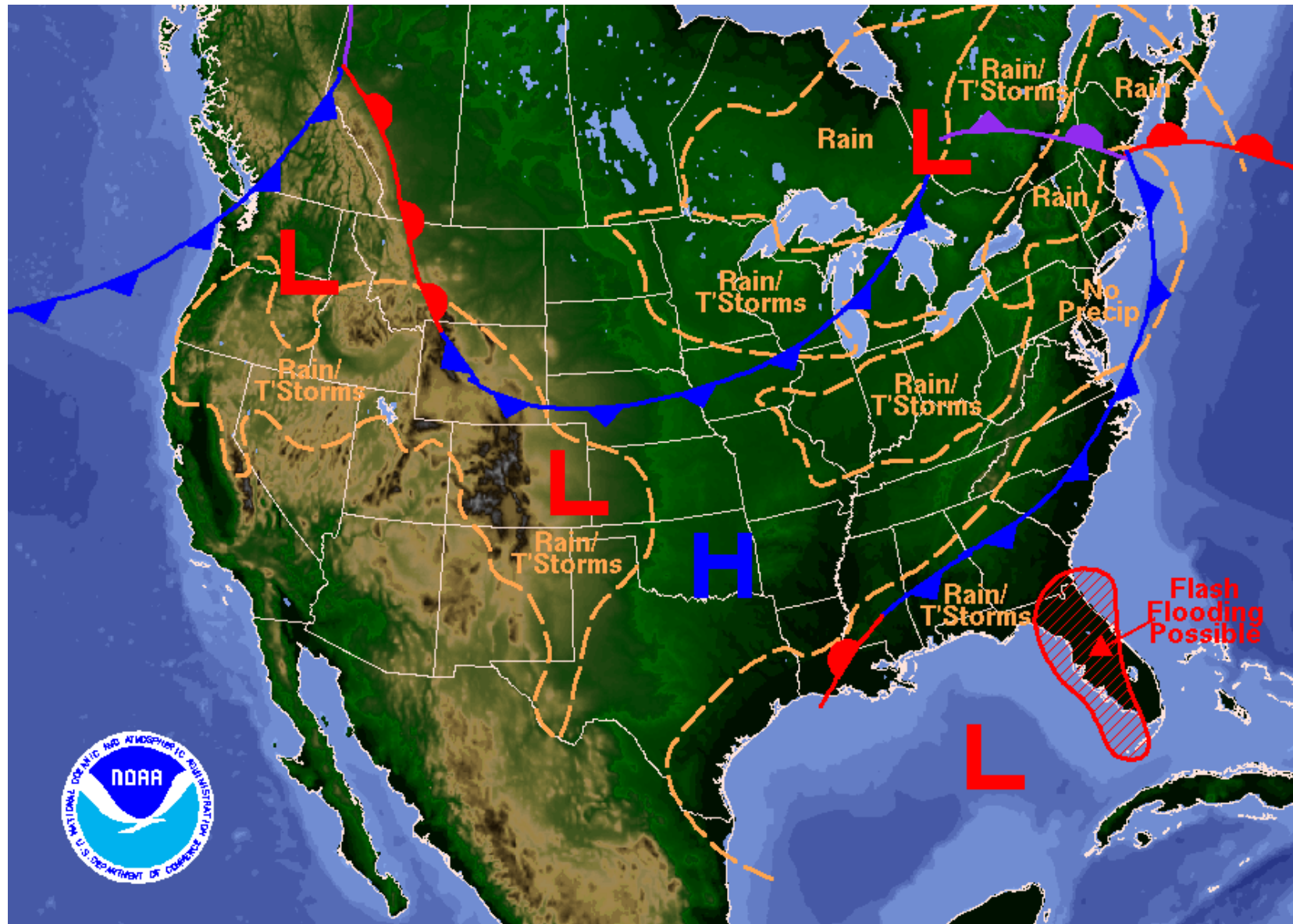


Initialized at 12z Jun 04 2016

Levi Cowan - tropicaltidbits.com

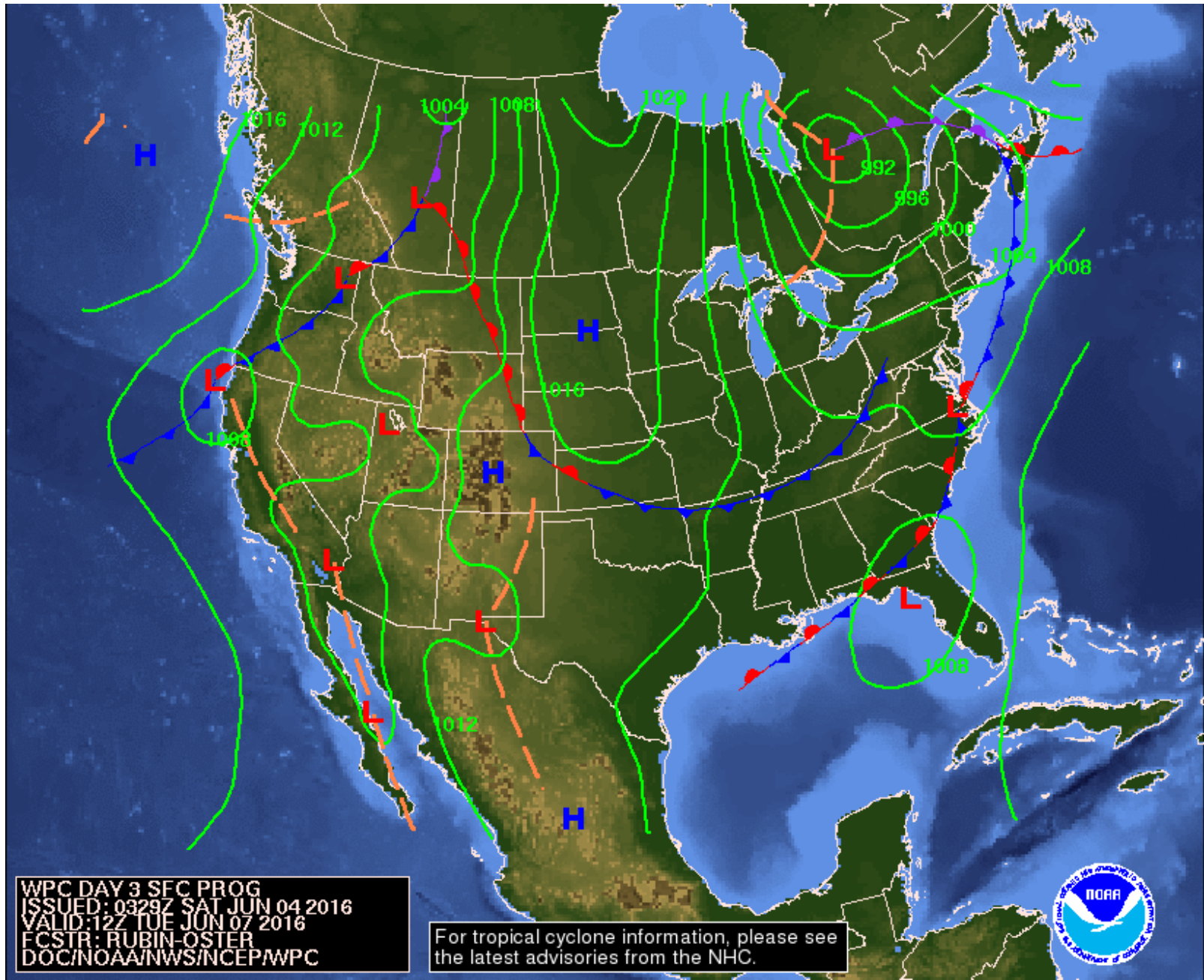


Monday (06/06) Weather Map

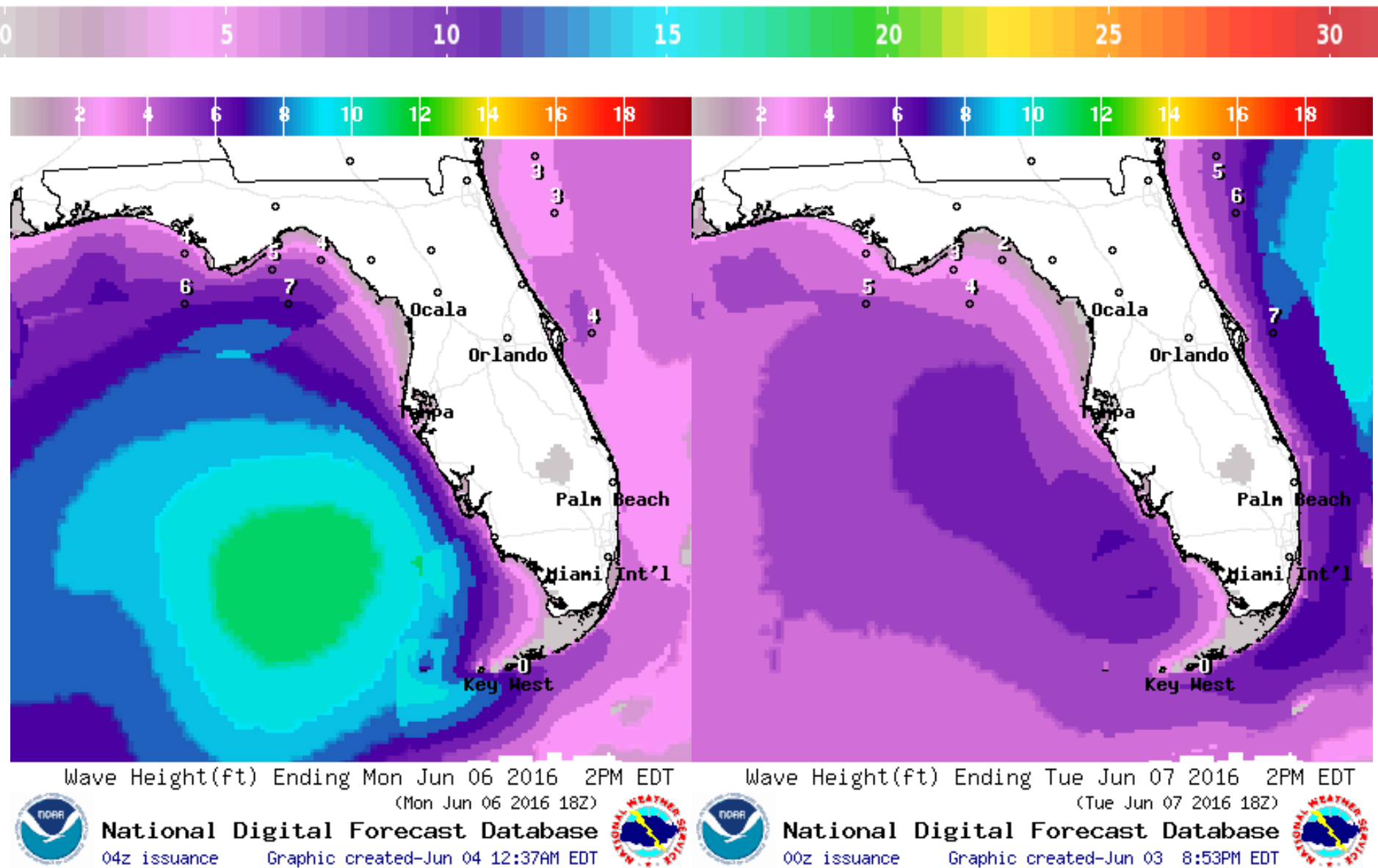


Weather Forecast for Mon, Jun 06, 2016, issued 4:56 AM EDT Sat, Jun 04, 2016
DOC/NOAA/NWS/NCEP/Weather Prediction Center
Prepared by Tate based on WPC, SPC and NHC forecasts

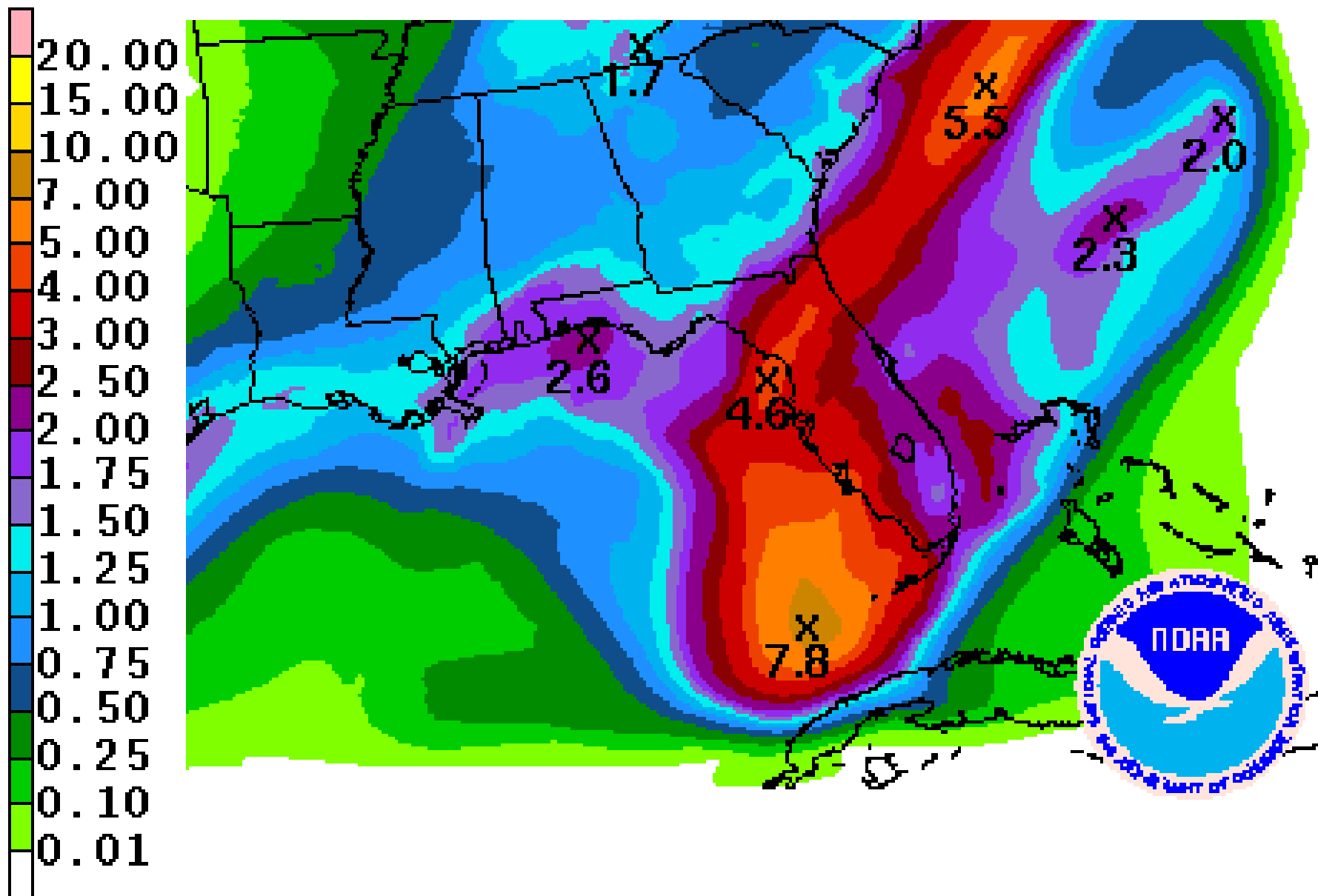
Tuesday (06/07) Weather Map



Forecast Wave Heights – Monday and Tuesday



Forecast Total Rainfall Accumulations (Saturday Through Wednesday)



Summary

General Outlook:

- An area of showers and thunderstorms in the northwest Caribbean is being monitored for tropical development.
- As of 8am EDT, the National Hurricane Center is now giving the disturbance a 70% chance of tropical cyclone development over the next 48 hours and an 80% chance of tropical cyclone development over the next five days as it moves over the Yucatan Peninsula and into the southern Gulf of Mexico.
- Although it is poorly organized at this time, it is expected to develop into a low pressure system by tomorrow, and computer models are in fairly good agreement with a general northeasterly motion that would take the system toward the Florida Peninsula.
- Forecast models are in fairly good agreement on the timing of impact to Florida, but intensity is still fairly uncertain. Most models are predicting a tropical depression or a weak tropical storm as it approaches Florida.
- A Hurricane Hunter reconnaissance aircraft is scheduled to investigate the disturbance this afternoon.
- The next name on the 2016 Atlantic storm name list is Colin.
- Elsewhere, Tropical Storm Bonnie is moving east into the Atlantic at 12 mph and is expected to become post-tropical again within 24 hours.

Florida Outlook:

- This system is expected to move quickly across the Gulf. Current timing suggests impacts could be felt in the Keys as early as late Sunday evening, spreading north along the West Coast throughout the day Monday and affecting much of the Peninsula through Tuesday evening.
- At this time, the primary impact from this system is expected to be heavy rain and flooding. Widespread amounts could range from 2 to 5 inches throughout the Peninsula, with isolated amounts up to 10 inches possible north of the I-4 corridor.
- Regardless of development, an increased risk of rip currents, minor coastal erosion, severe storms with damaging winds, and isolated tornadoes are possible impacts associated with this system.

Another briefing packet will be issued Saturday afternoon. For more information, visit the NHC website at www.nhc.noaa.gov.



TROPICAL UPDATE

Created by:

William Watson, Asst. State Meteorologist

william.watson@em.myflorida.com

State Meteorological Support Unit

Florida Division of Emergency Management

Users wishing to subscribe (approval pending) to this distribution list, register at
https://public.govdelivery.com/accounts/FLDEM/subscriber/new?topic_id=SERT_Met_Tropics.

Other reports available for subscription are available at

<https://public.govdelivery.com/accounts/FLDEM/subscriber/new?preferences=true>