



# **TROPICAL UPDATE**

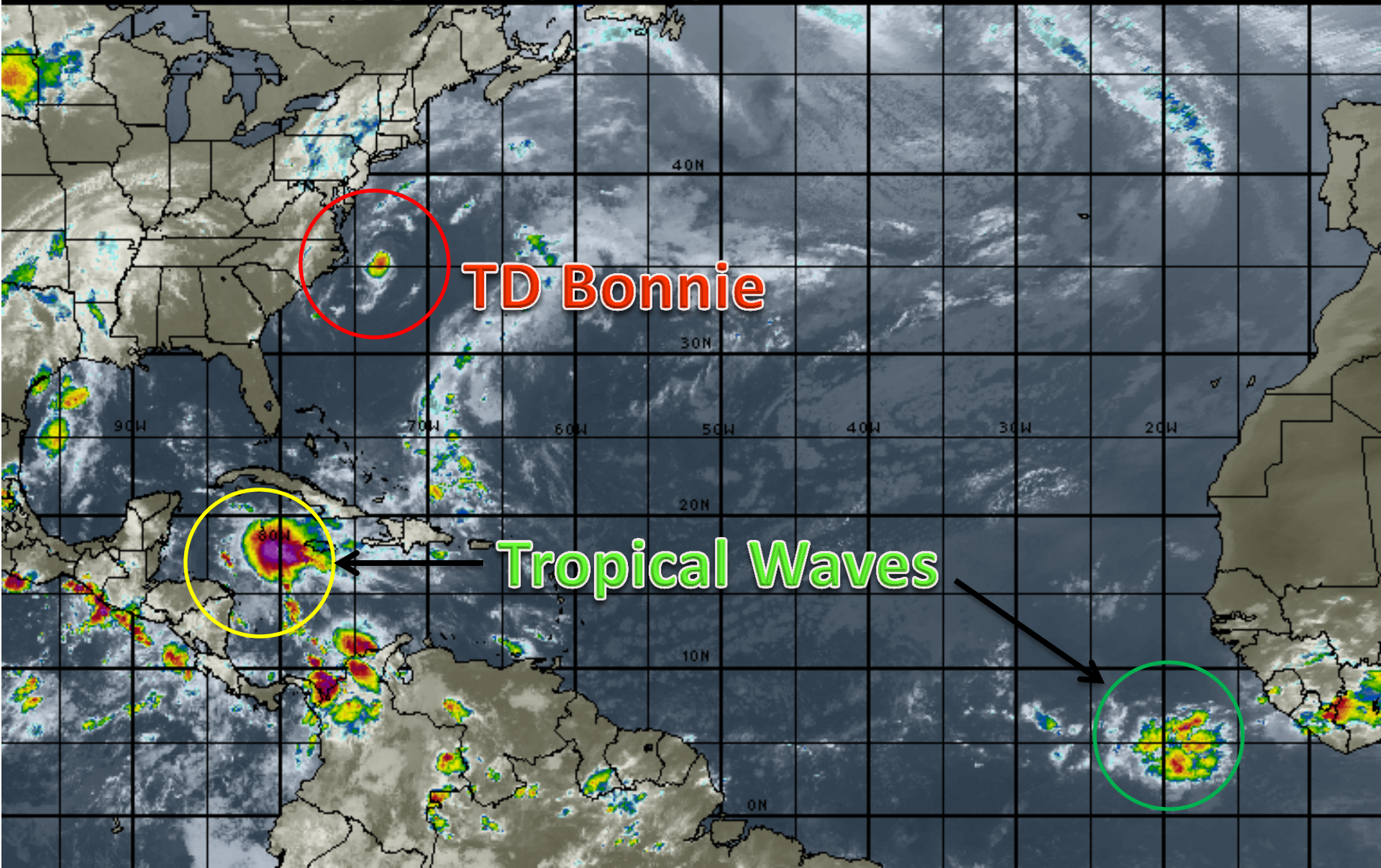
**8 AM EDT**

**Friday, June 3, 2016**

**This update is intended for government and emergency response officials, and is provided for informational and situational awareness purposes only. Forecast conditions are subject to change based on a variety of environmental factors. For additional information, or for any life safety concerns with an active weather event please contact your County Emergency Management or Public Safety Office, local National Weather Service forecast office or visit the National Hurricane Center website at [www.nhc.noaa.gov](http://www.nhc.noaa.gov).**

# Atlantic Basin Satellite Image

09:00 03-JUN-2016 GMT ©Copyright WSI Corporation <http://www.wsi.com>

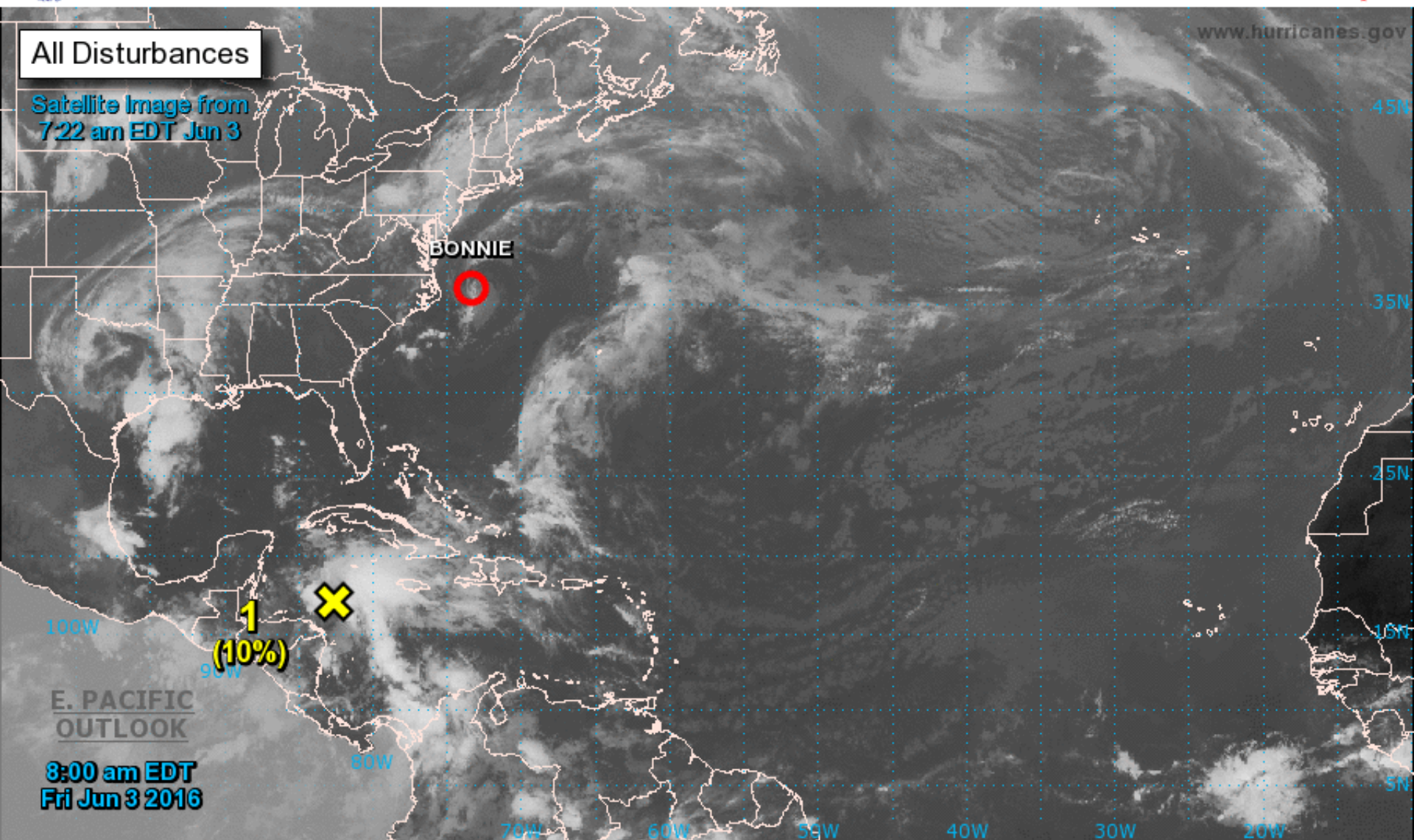






# Two-Day Graphical Tropical Weather Outlook

National Hurricane Center Miami, Florida



Current Disturbances and Two-Day Cyclone Formation Chance: < 40% 40-60% > 60%

Tropical or Sub-Tropical Cyclone: Depression Storm Hurricane

Post-Tropical Cyclone Remnants





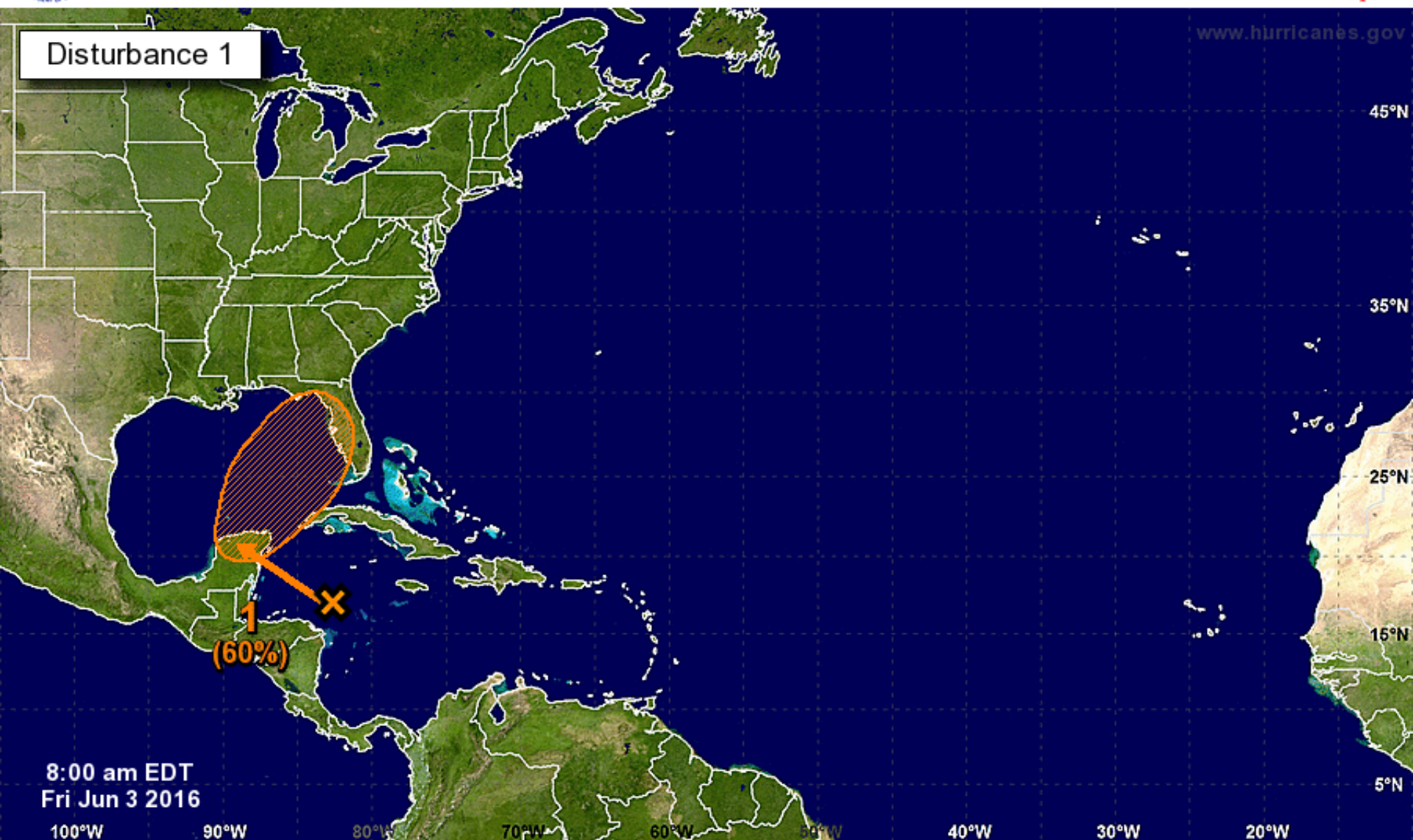
# Five-Day Graphical Tropical Weather Outlook

National Hurricane Center Miami, Florida



www.hurricanes.gov

Disturbance 1



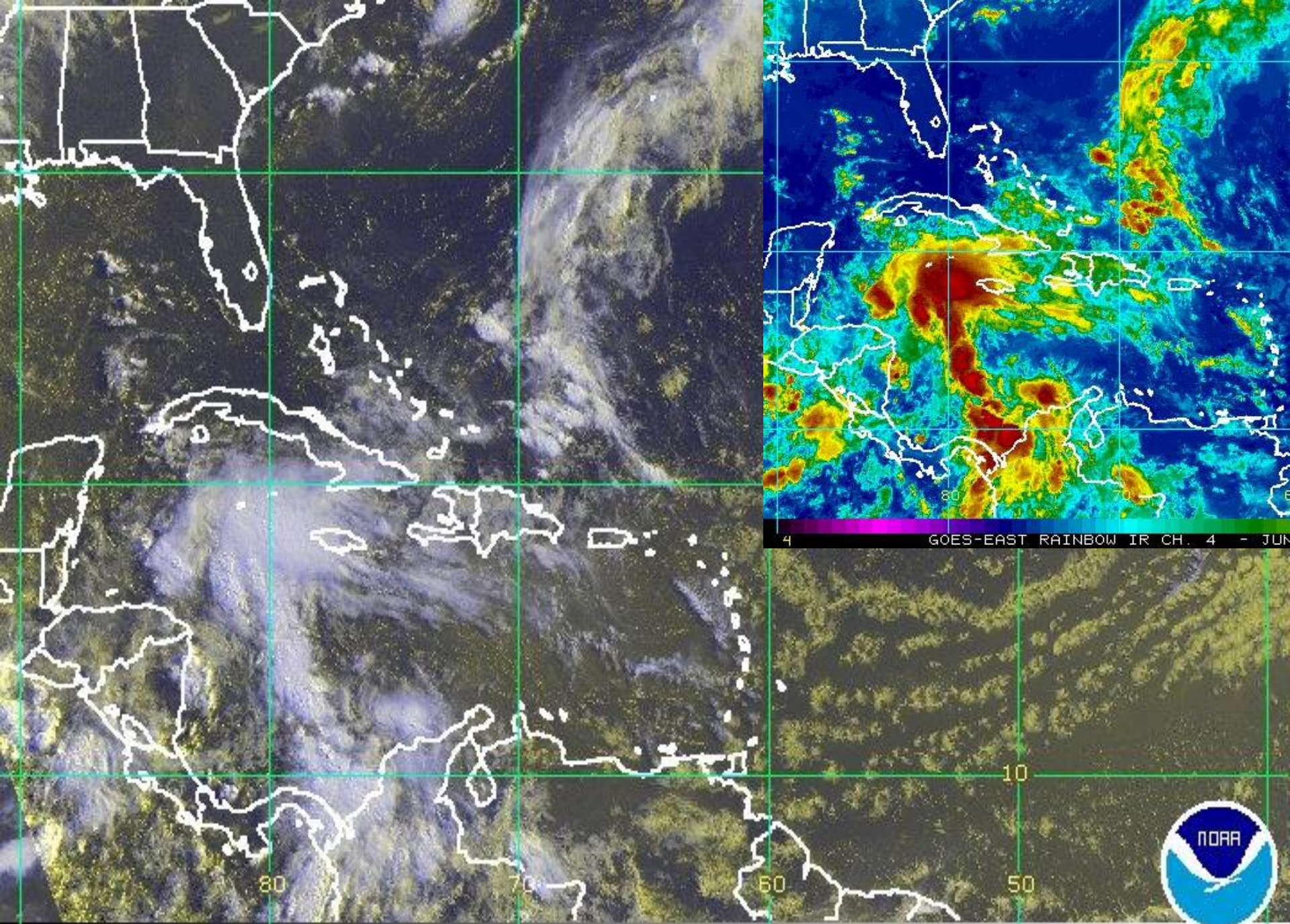
8:00 am EDT  
Fri Jun 3 2016

Tropical Cyclone Formation Potential for the Five-Day Period Ending at 8:00 am EDT Wed Jun 8 2016

Chance of Cyclone Formation in Five Days: ■ Low < 40% ■ Medium 40-60% ■ High > 60%

X indicates current disturbance location; shading indicates potential formation area.





1 GOES-EAST RGB IMAGE [CH1,CH1,CH4] - JUN 3 16 11:45 UTC

McIDAS



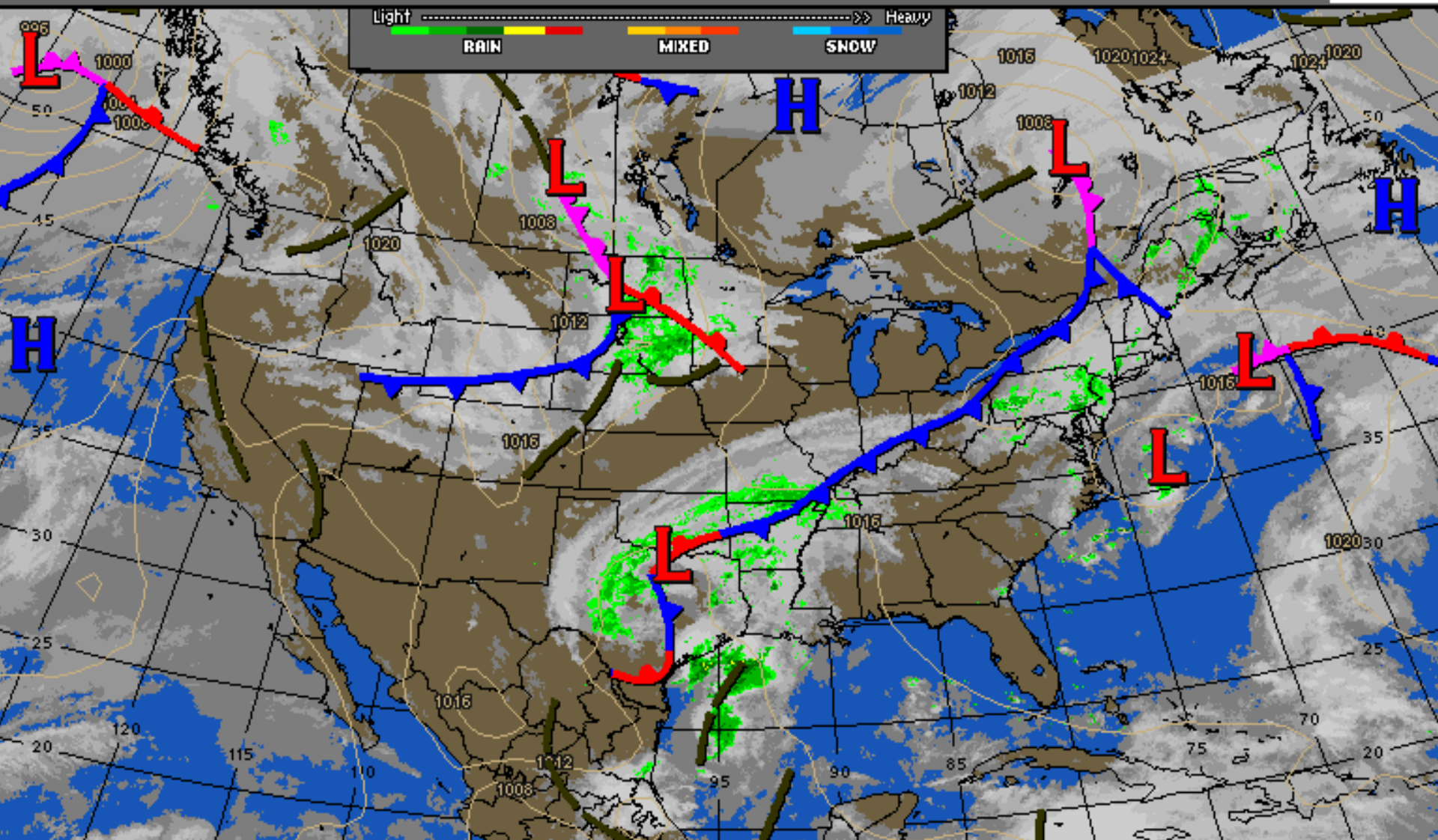
# Surface Weather Map

10:30 03-JUN-2016 GMT ©Copyright WSI Corporation <http://www.wsi.com>

U.S. SURFACE ANALYSIS w/ Radar and IR Sat

VALID AT 0900 UTC 03 Jun 16

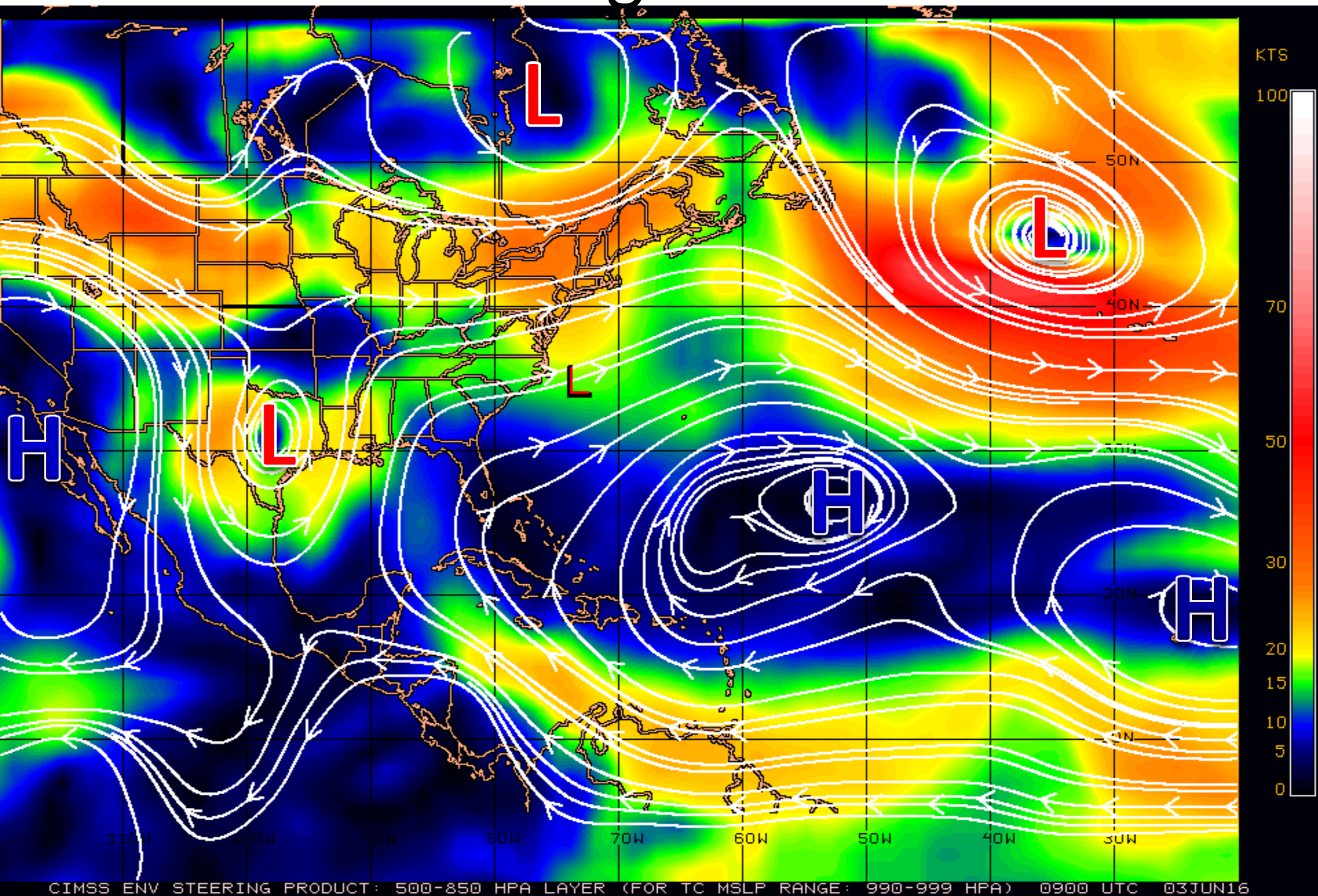
WSI®



UPDATED 10:37 UTC 03 Jun 16

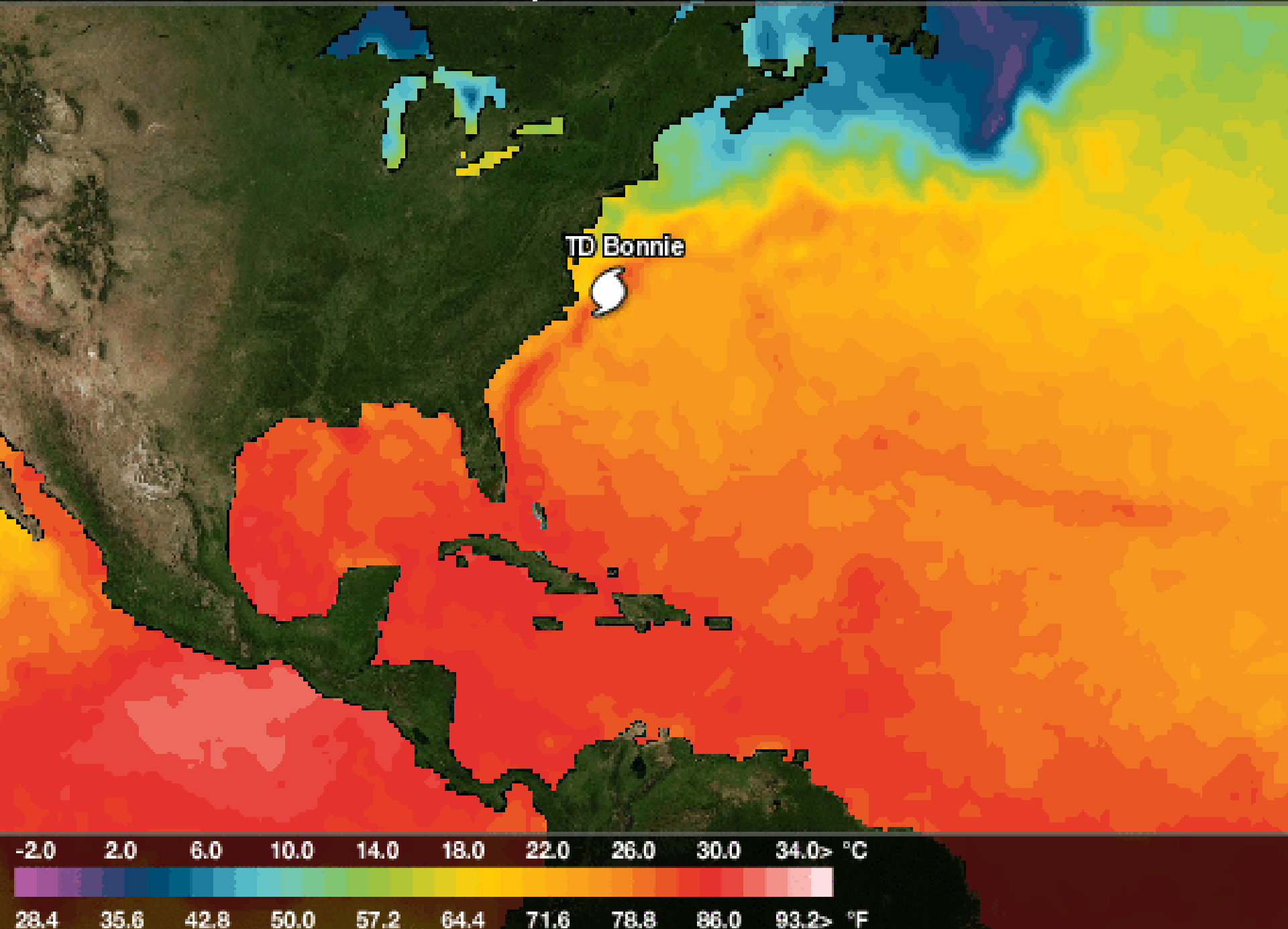
UPDATED EVERY 3 HOURS

# Steering Currents



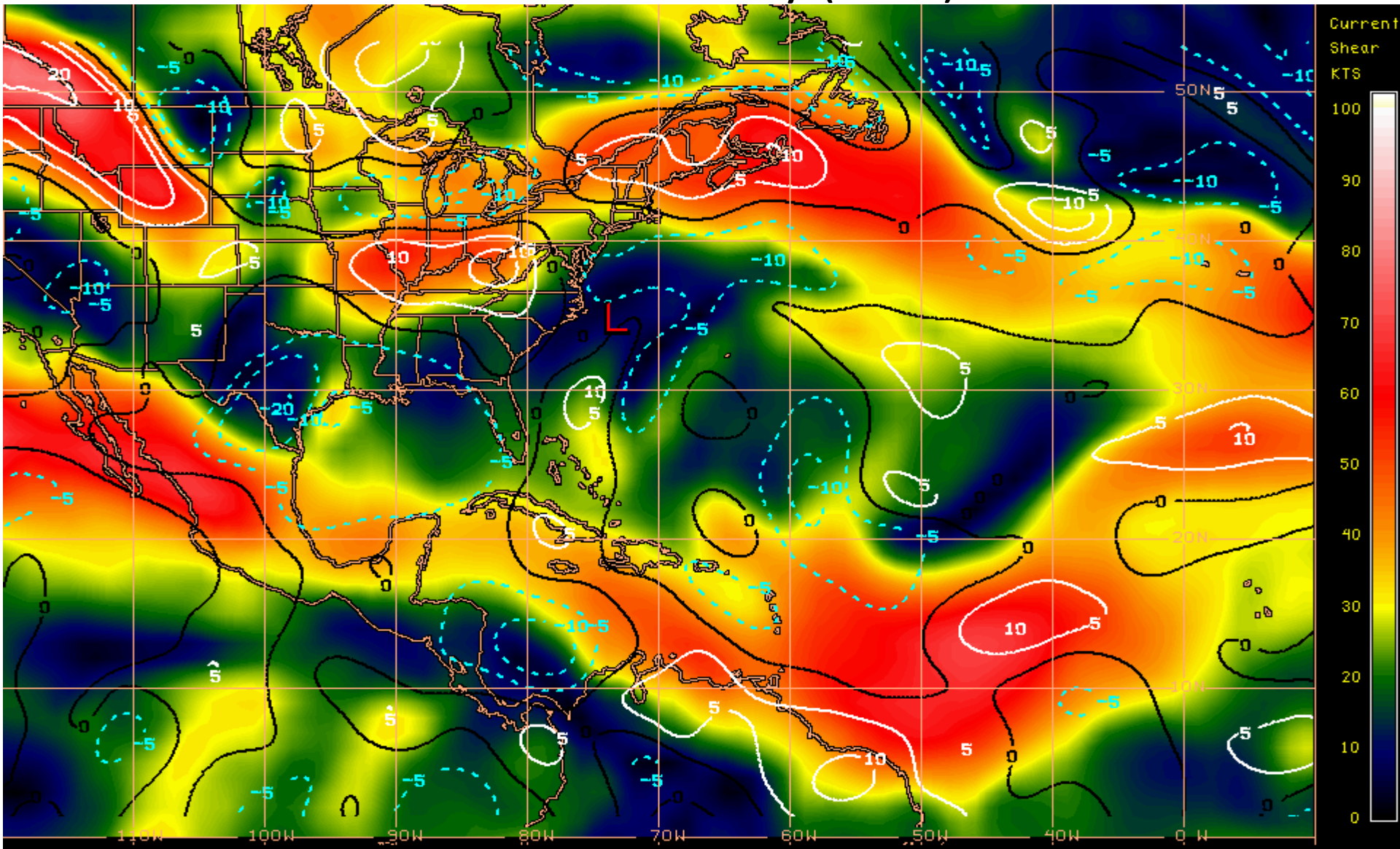
# Northern Atlantic Sea Surface Temperature

Generated Fri Jun 3





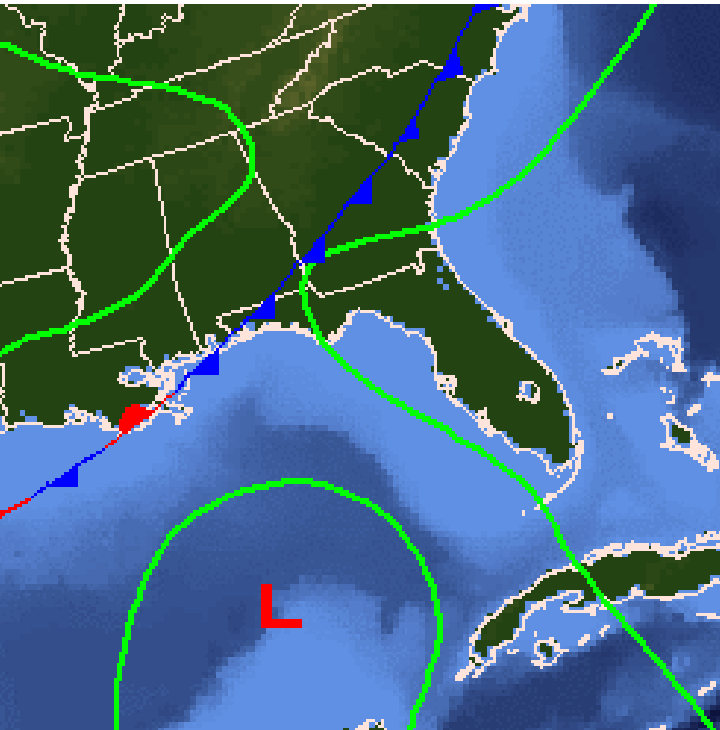
# Current Wind Shear (shaded) and Shear Tendency (lines)



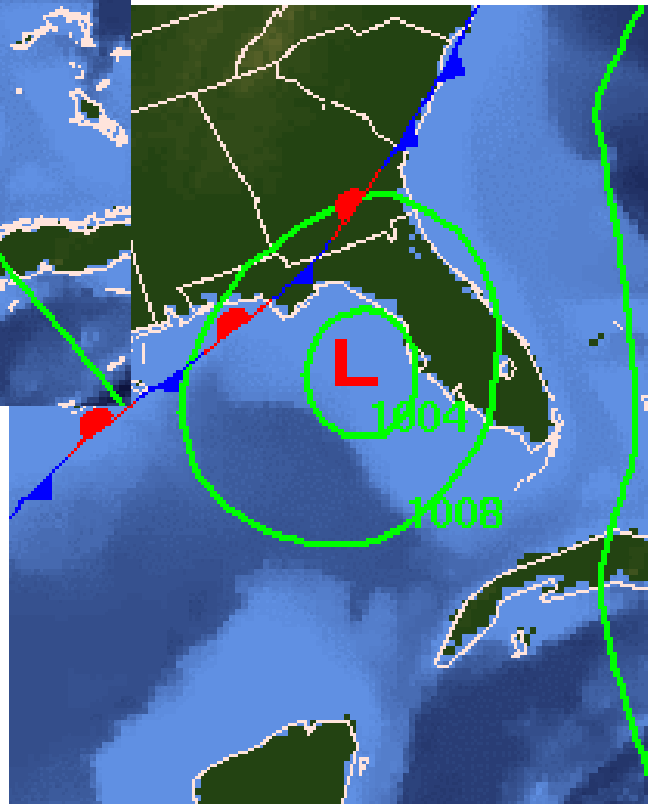
Shear Tendency (KTS) Over Past 24 Hours: Increasing ——— Decreasing - - - -

6055Z EAST 24 HOUR WIND SHEAR TENDENCY PRODUCT 8000 UTC 07JUN16 UNL OTHER M-TRPS

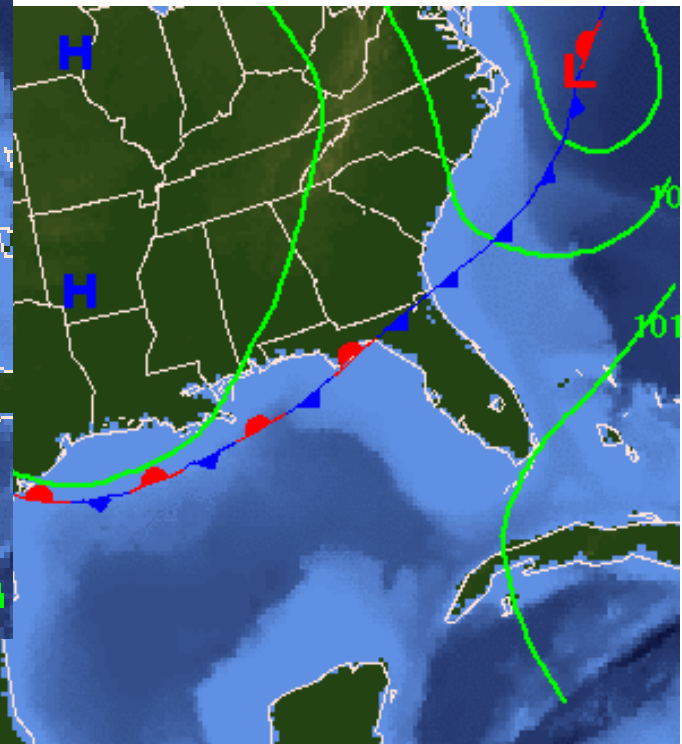
# NOAA Weather Forecast Maps



Monday



Tuesday



Wednesday

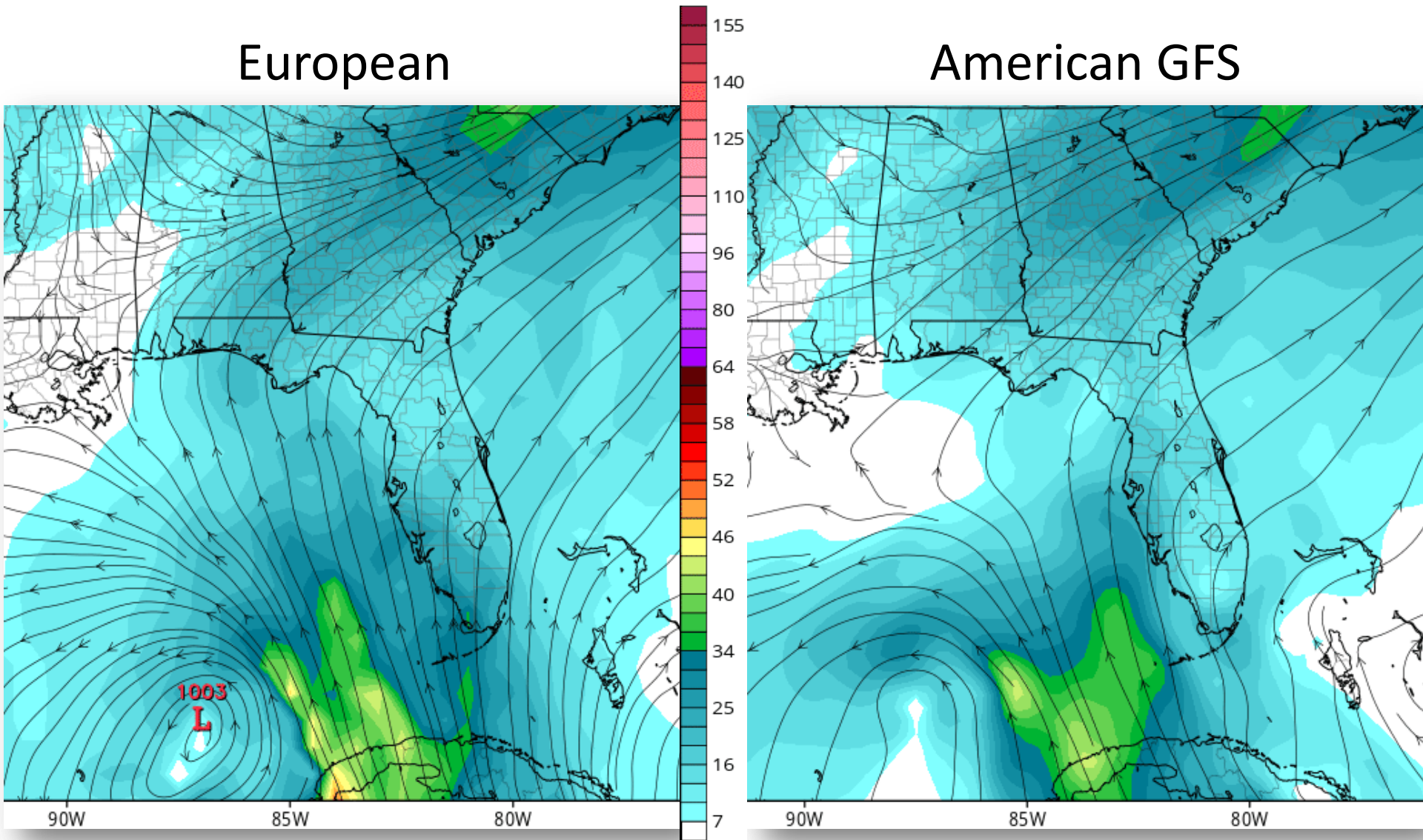


# Global Model Output

Sunday Night

European

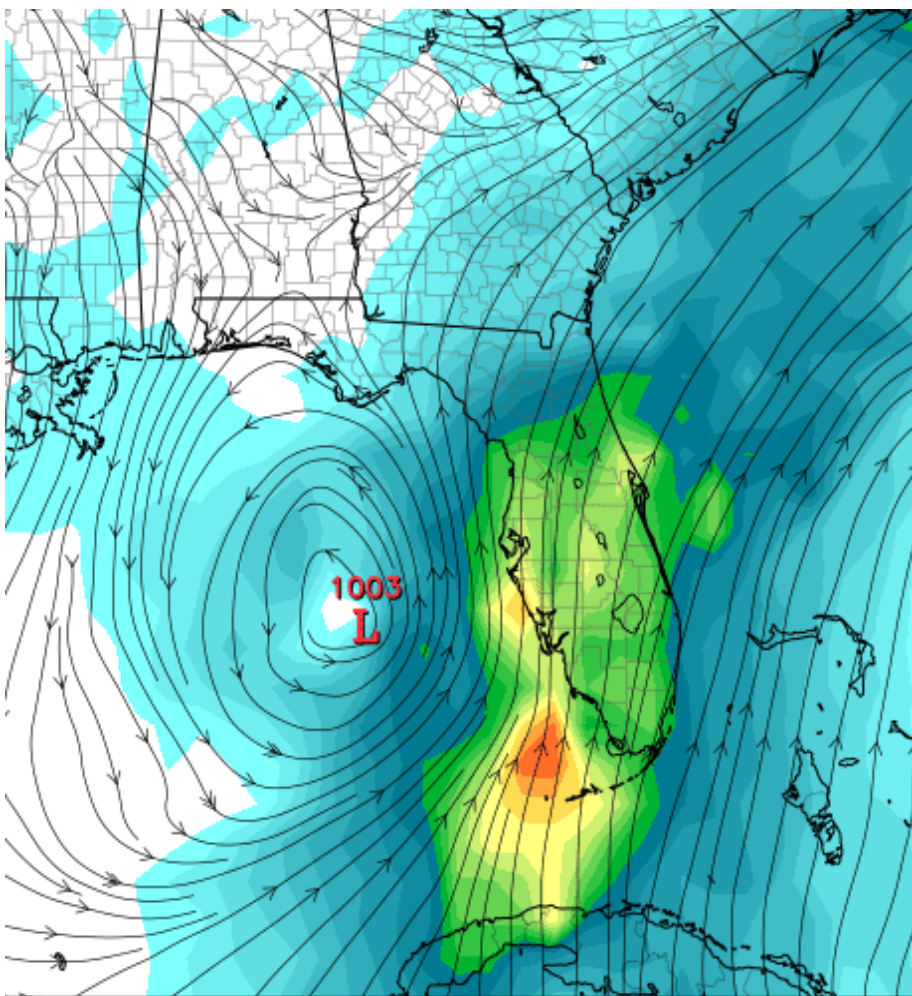
American GFS



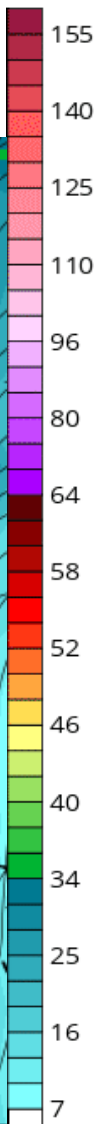
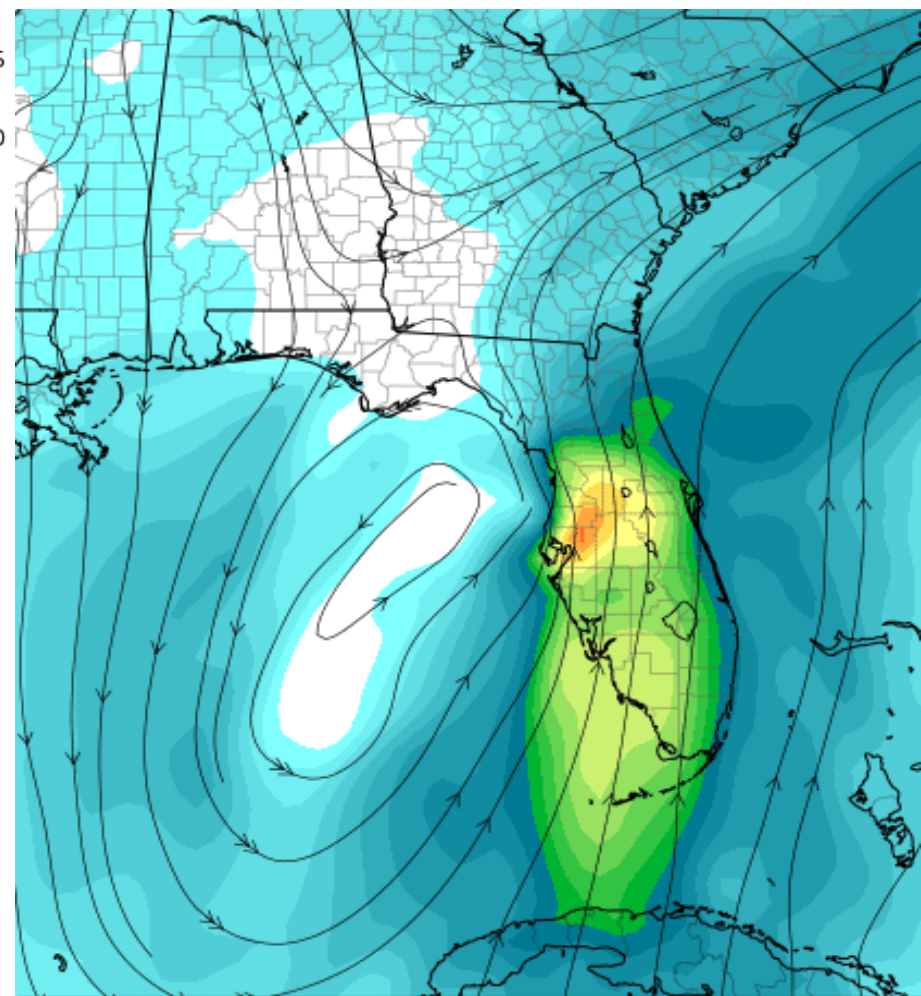
# Global Model Output

Monday Night

European



American GFS

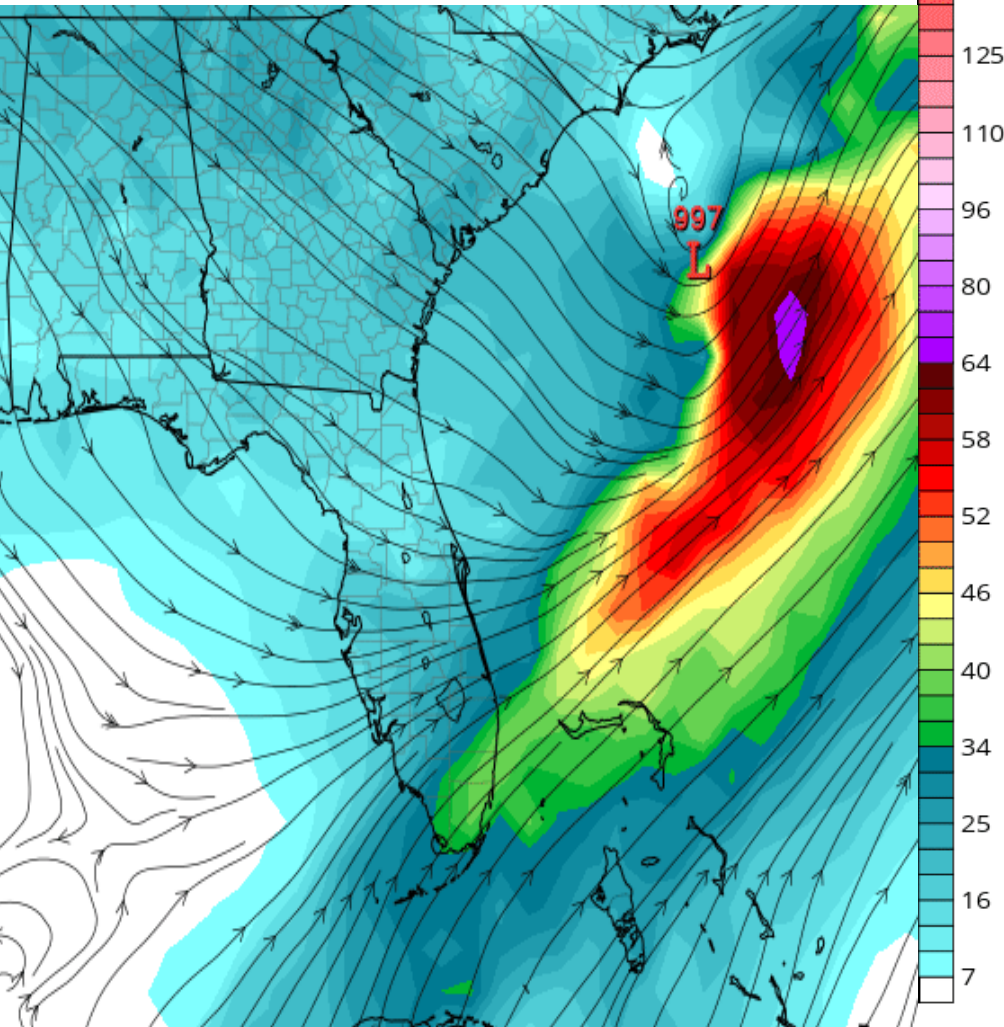




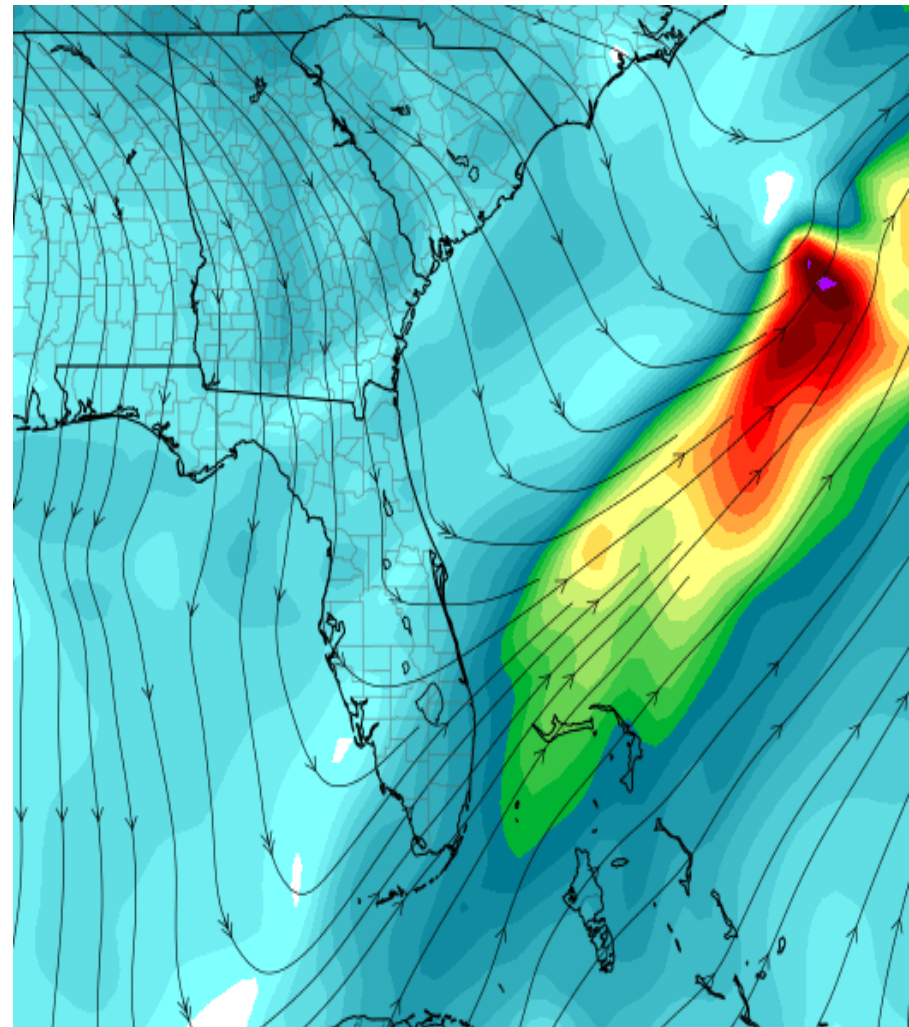
# Global Model Output

Tuesday Night

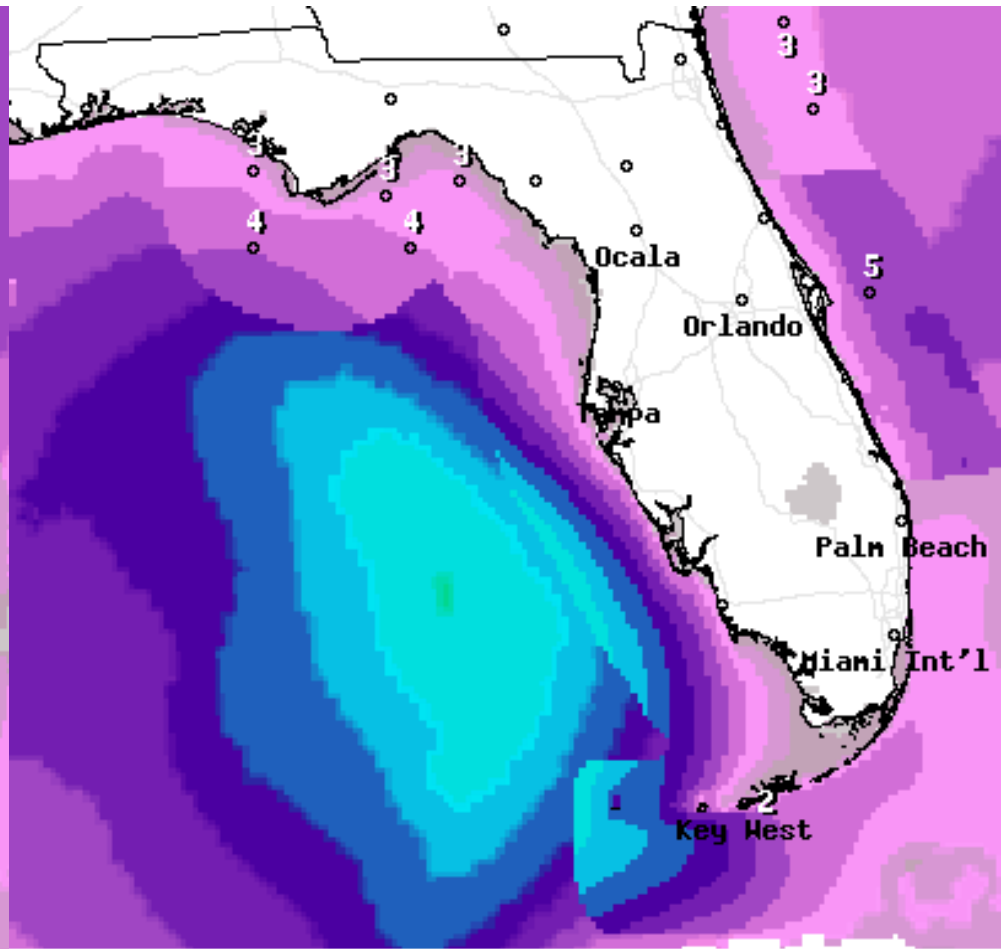
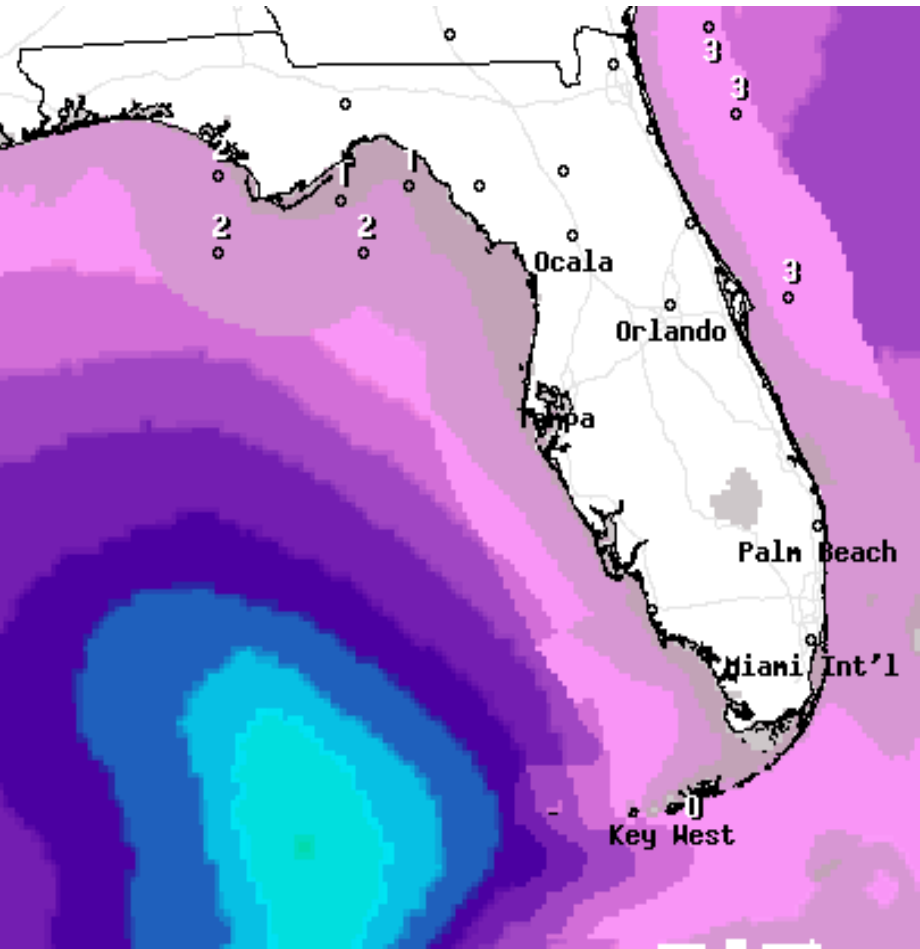
European



American GFS



# ***Forecast Wave Heights (feet) – Monday***

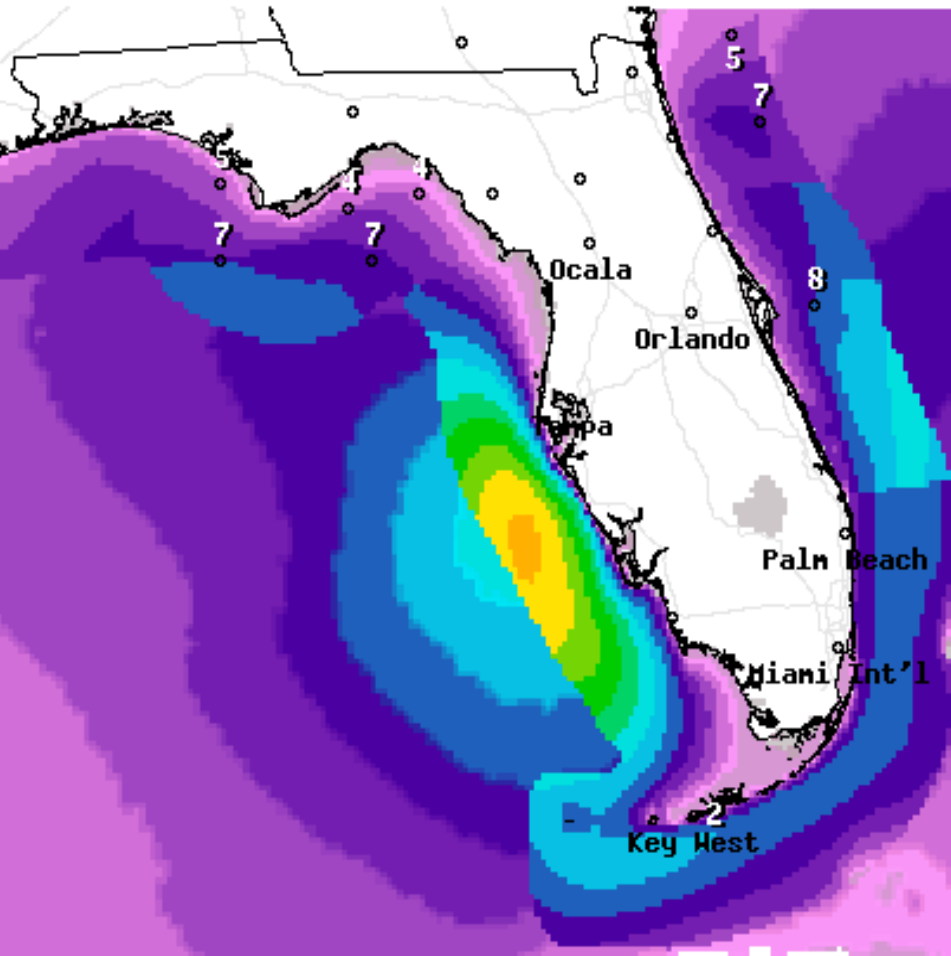


Wave Height(ft) Ending Mon Jun 06 2016 8AM EDT

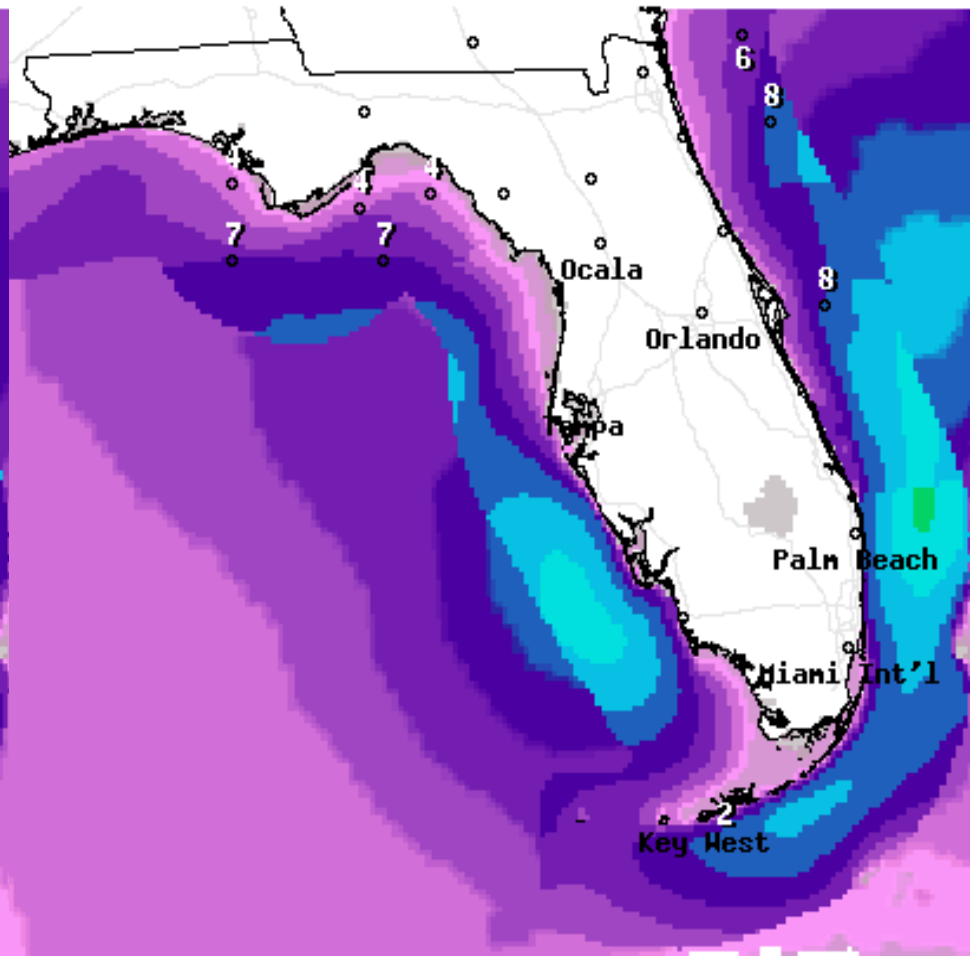
Wave Height(ft) Ending Mon Jun 06 2016 8PM EDT



# *Forecast Wave Heights (feet) – Tuesday*

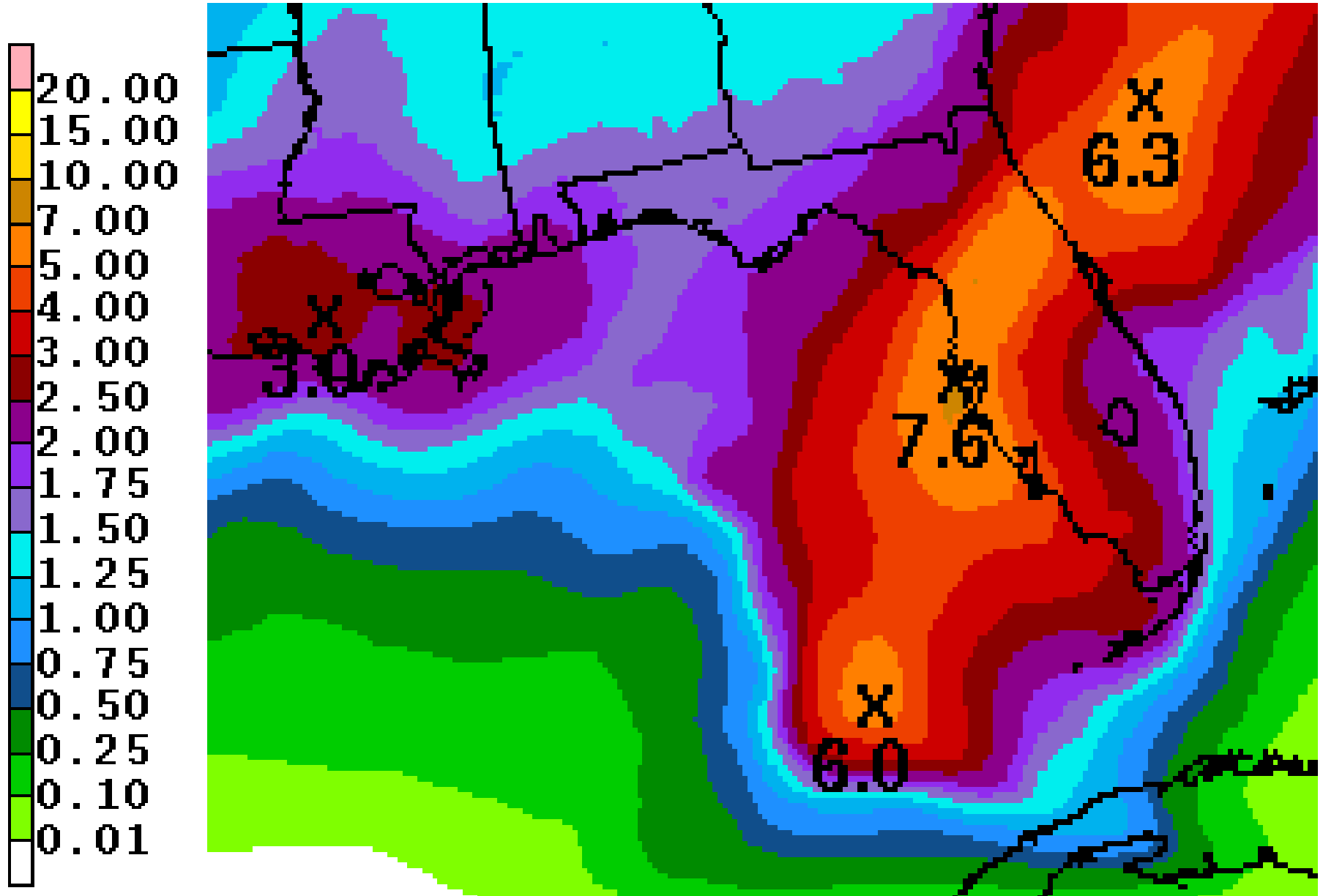


Wave Height(ft) Ending Tue Jun 07 2016 8AM EDT



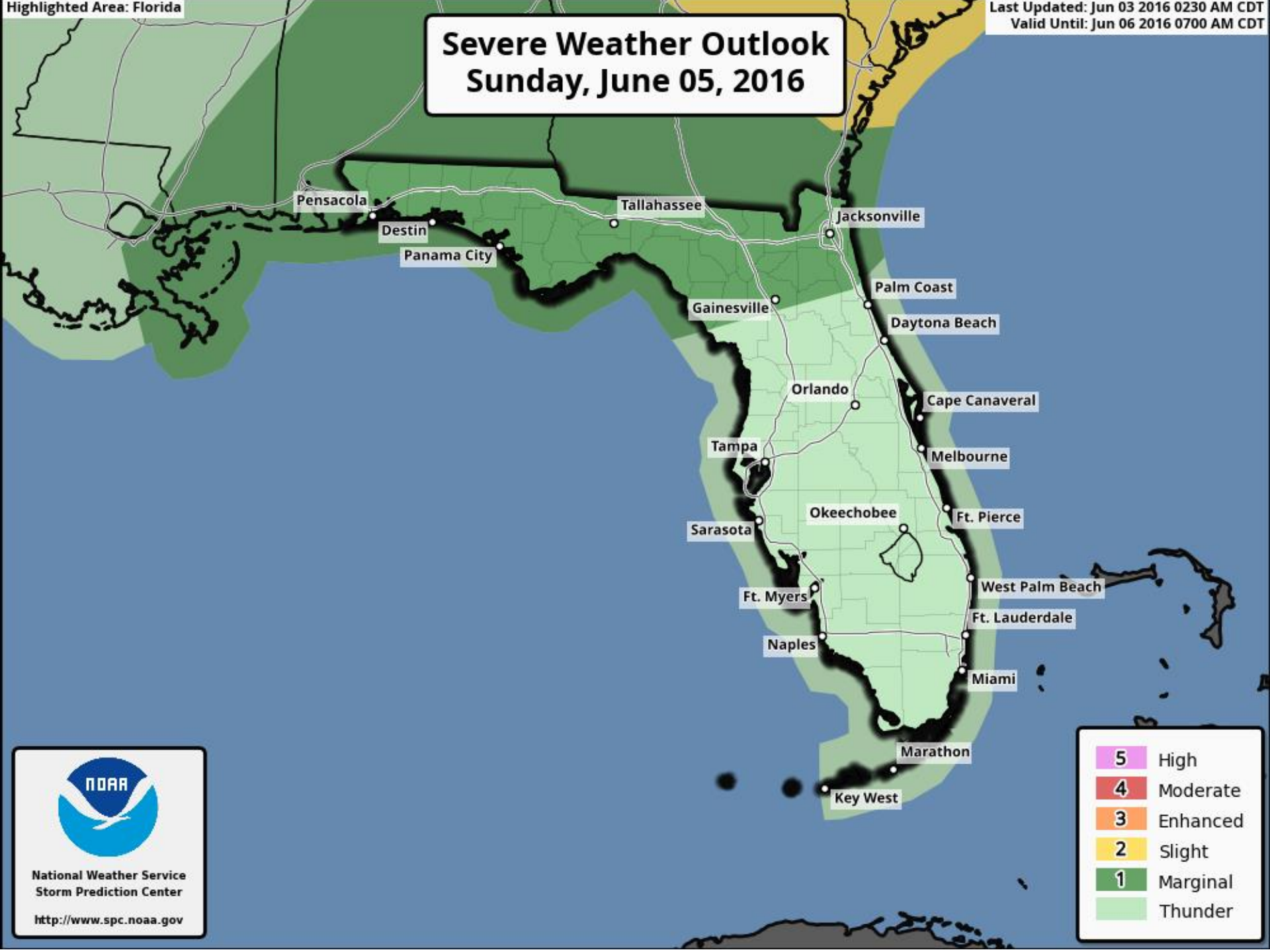
Wave Height(ft) Ending Tue Jun 07 2016 2PM EDT

# *Forecast Total Rainfall Accumulations for next 5 Days*





# Severe Weather Outlook Sunday, June 05, 2016



National Weather Service  
Storm Prediction Center

<http://www.spc.noaa.gov>

5	High
4	Moderate
3	Enhanced
2	Slight
1	Marginal
	Thunder

# Summary

## Summary:

- An area of showers and thunderstorms over the western Caribbean Sea is currently being monitored for possible tropical development.
- This system is moving west-northwestward toward the Yucatan Peninsula of Mexico, and a low pressure area is expected to form over the Yucatan or the adjacent waters by late Sunday evening.
- This low could develop into a tropical cyclone as it moves into the southeastern Gulf of Mexico early next week.
- As a result, the National Hurricane Center is predicting a 10% (low) chance of cyclone formation within the next 48 hours, but a 60% (medium) chance of development within the next 2-5 days.
- The full suite of computer models have not been run on this system, but global models have a fair degree of confidence of a Florida impact Monday night into Tuesday. However, there is still a good deal of uncertainty in regards to the potential strength of this system.
- A Hurricane Hunter reconnaissance mission into the system is tentatively scheduled for Sunday afternoon.
- The next name on the 2016 Atlantic storm name list is Colin.
- Elsewhere, Tropical Depression Bonnie is located 130 miles east of Cape Hatteras, North Carolina and moving east-northeast at 8mph. Bonnie is expected to become post-tropical again this weekend while moving further away from the U.S. coast.

## Florida Outlook:

- Regardless of development, this system is expected to move quickly across the eastern Gulf. As a result, initial impacts could begin as soon as Monday.
- The main impact will be heavy rain as a result of this system interacting with a stalled cold front over North Florida. Rainfall amounts from Sunday to Wednesday could reach 3-6" across much of Central and South Florida, with isolated higher totals of 8-12" possible near the I-4 corridor.
- Severe weather including isolated tornadoes or waterspouts is possible across North Florida on Sunday as a result of the incoming frontal system, with additional severe weather possible on Monday or Tuesday across portions of Central and South Florida as wind shear increases as the storm approaches.
- In addition, increased wave heights are expected along the Gulf Coast beginning Monday, leading to an elevated risk of rip currents and minor coastal erosion.

Another briefing packet will be issued this afternoon. For more information on this system visit the NHC website at

[www.nhc.noaa.gov](http://www.nhc.noaa.gov)





# TROPICAL UPDATE

Created by:

Amy Godsey, Chief State Meteorologist  
[amy.godsey@em.myflorida.com](mailto:amy.godsey@em.myflorida.com)

State Meteorological Support Unit  
Florida Division of Emergency  
Management

Users wishing to subscribe (approval pending) to this distribution list, register at [https://public.govdelivery.com/accounts/FLDEM/subscriber/new?topic\\_id=SERT\\_Met\\_Tropics](https://public.govdelivery.com/accounts/FLDEM/subscriber/new?topic_id=SERT_Met_Tropics).

Other reports available for subscription are available at <https://public.govdelivery.com/accounts/FLDEM/subscriber/new?preferences=true>