



# **TROPICAL UPDATE**

**9 AM EDT**

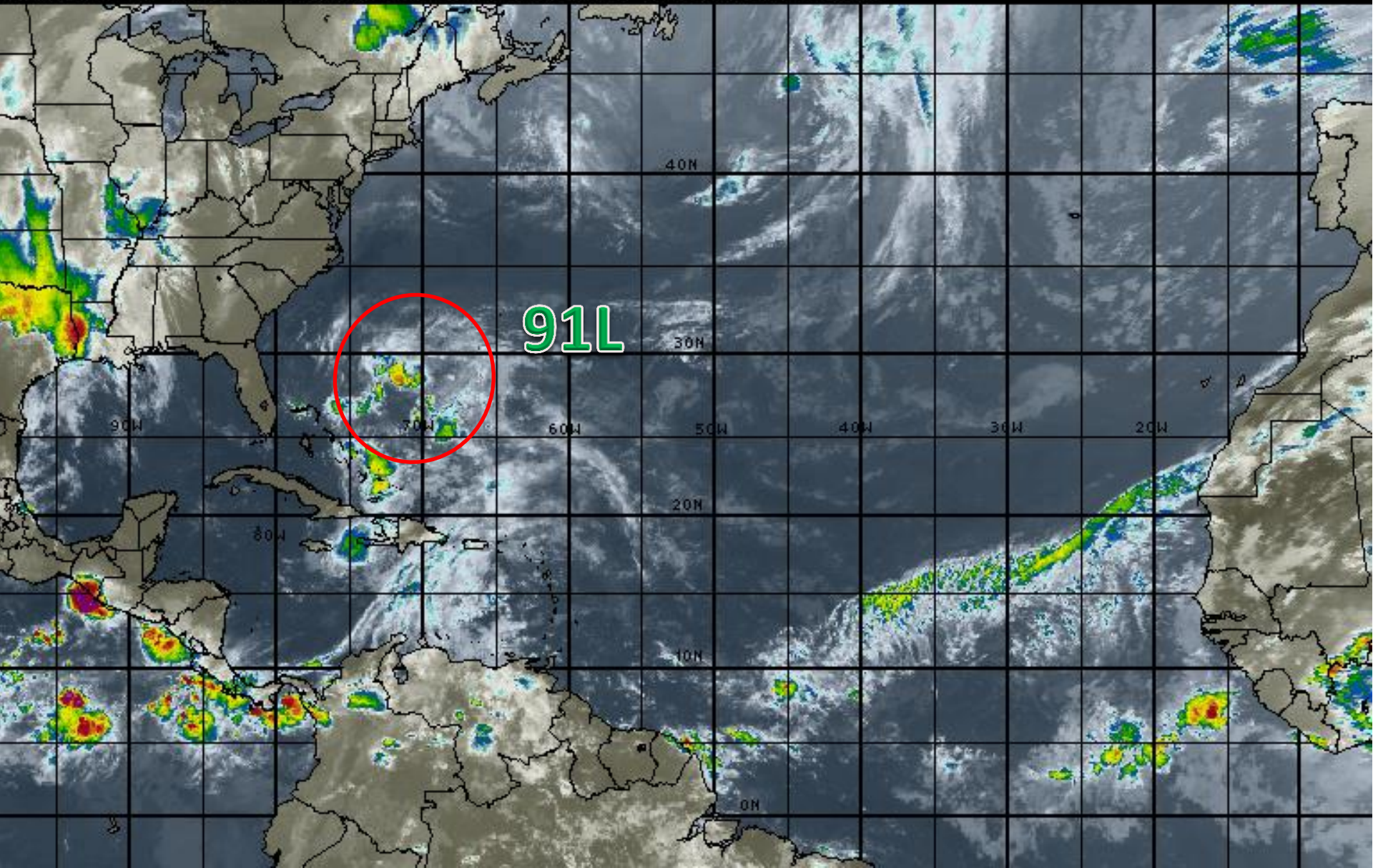
**Friday, May 27, 2016**

**Invest 91L**

**This update is intended for government and emergency response officials, and is provided for informational and situational awareness purposes only. Forecast conditions are subject to change based on a variety of environmental factors. For additional information, or for any life safety concerns with an active weather event please contact your County Emergency Management or Public Safety Office, local National Weather Service forecast office or visit the National Hurricane Center website at [www.nhc.noaa.gov](http://www.nhc.noaa.gov).**

# Atlantic Basin Satellite Image

12:00 27-MAY-2016 GMT ©Copyright MSI Corporation <http://www.wsi.com>







# Two-Day Graphical Tropical Weather Outlook

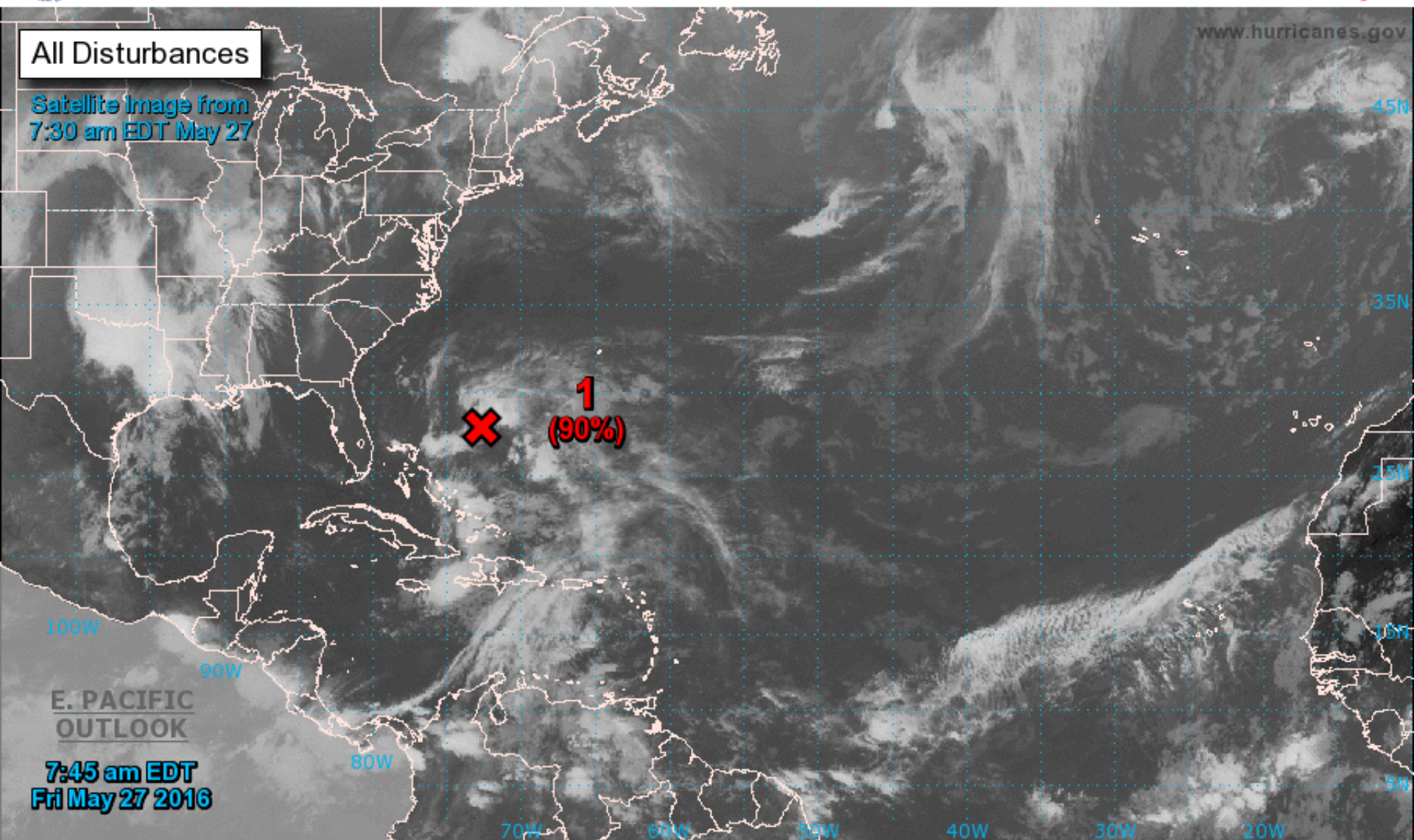
National Hurricane Center Miami, Florida



All Disturbances

Satellite Image from  
7:30 am EDT May 27

www.hurricanes.gov



7:45 am EDT  
Fri May 27 2016

Current Disturbances and Two-Day Cyclone Formation Chance: < 40% 40-60% > 60%

Tropical or Sub-Tropical Cyclone: Depression Storm Hurricane

Post-Tropical Cyclone Remnants





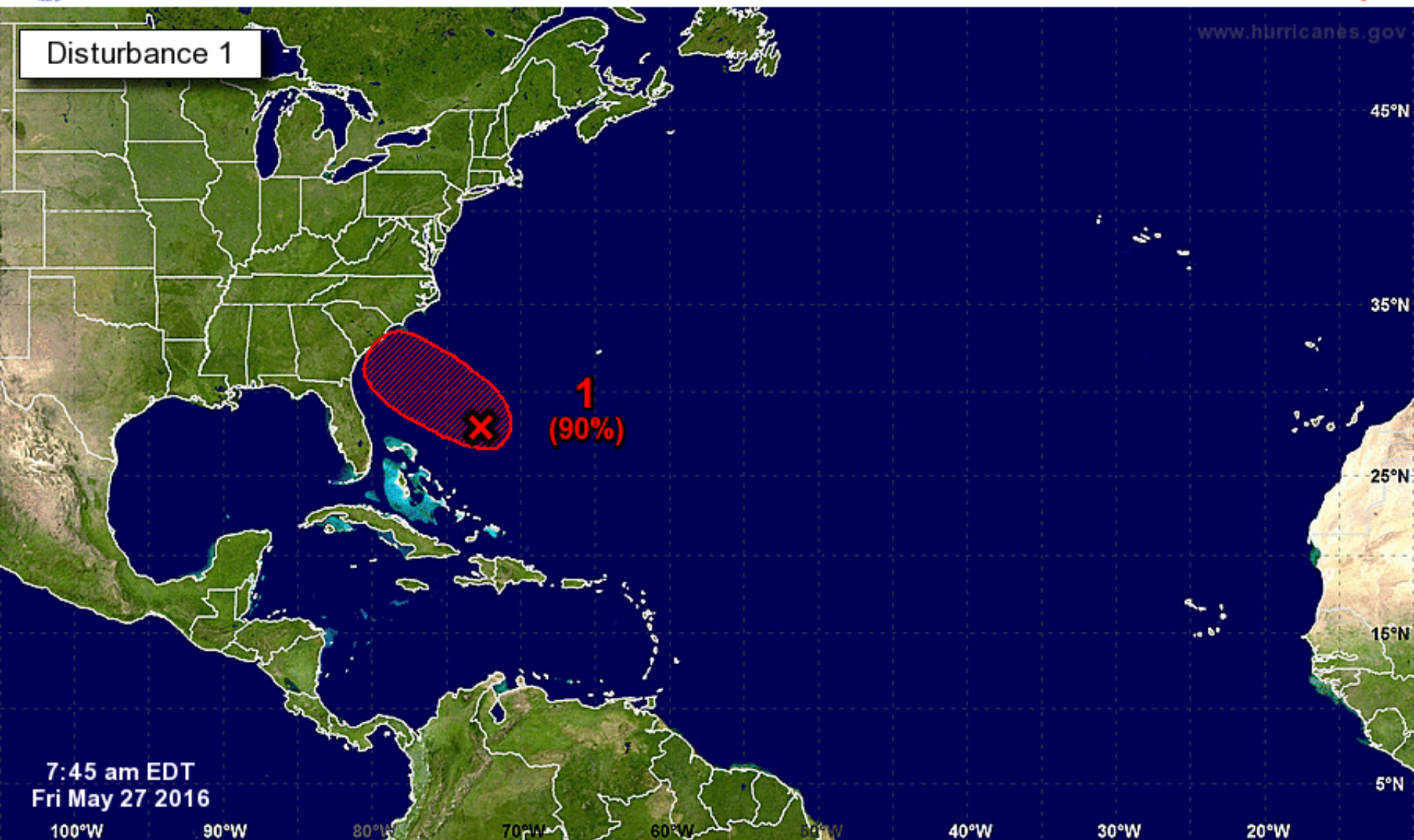
# Five-Day Graphical Tropical Weather Outlook

National Hurricane Center Miami, Florida



www.hurricanes.gov

Disturbance 1



7:45 am EDT  
Fri May 27 2016

Tropical Cyclone Formation Potential for the Five-Day Period Ending at 7:45 am EDT Wed Jun 1 2016

Chance of Cyclone Formation in Five Days: ■ Low < 40% ■ Medium 40-60% ■ High > 60%

X indicates current disturbance location; shading indicates potential formation area.



**Invest 91L**

2 AM Fri May 27, 2016

Position 27.0° 72.0° W

Maximum Winds 35 mph

Movement W at 9 mph

Blue Marble basemap imagery courtesy NASA

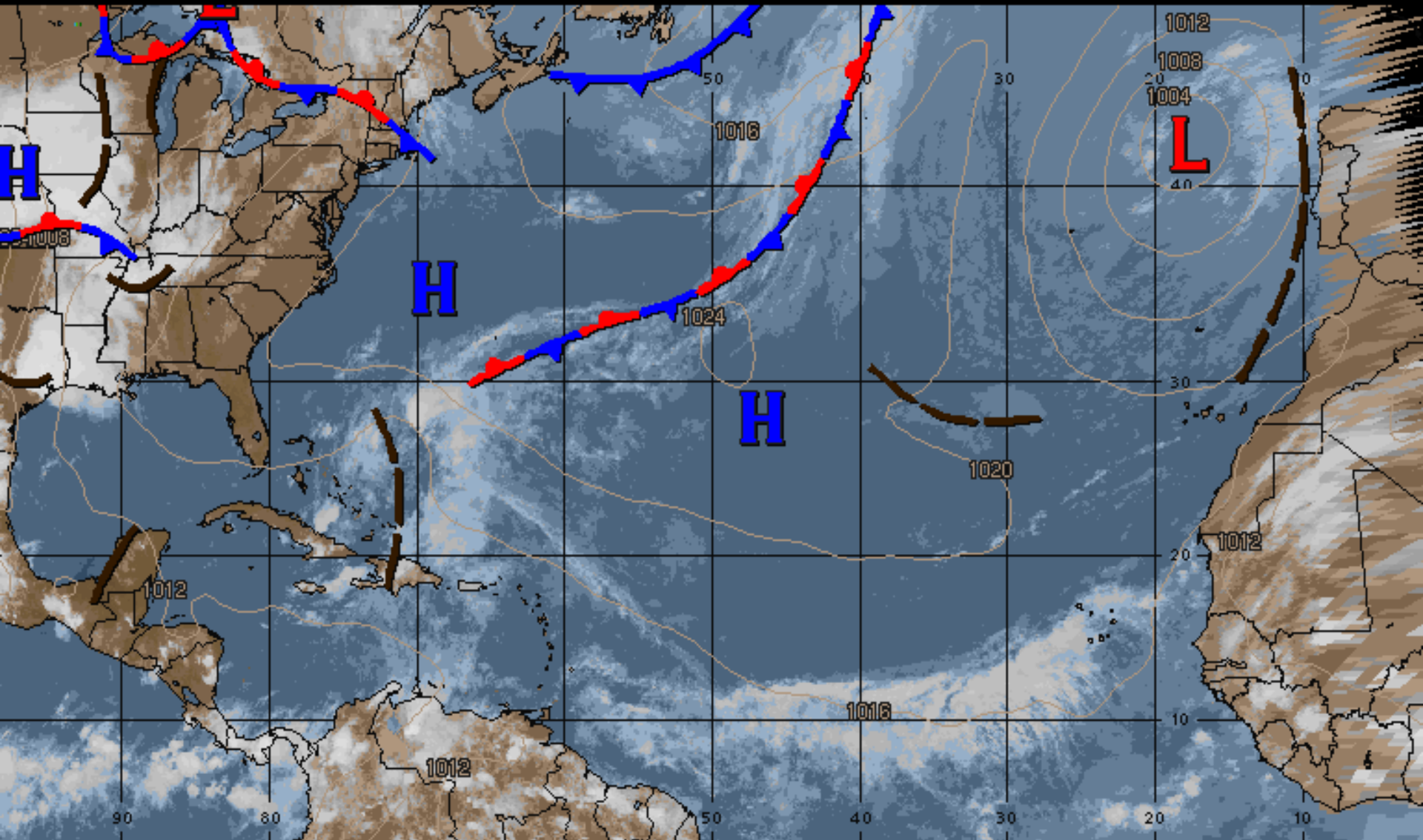
Satellite 12:16 PM UTC

12:16 PM GMT



# Surface Weather Map

00:00 27-MAY-2016 GMT ©Copyright WSI Corporation <http://www.wsi.com>



TROPICAL SURFACE ANALYSIS

Valid 7 PM ET 26-May-16

WAVE DEPRESSION STORM HURRICANE

L

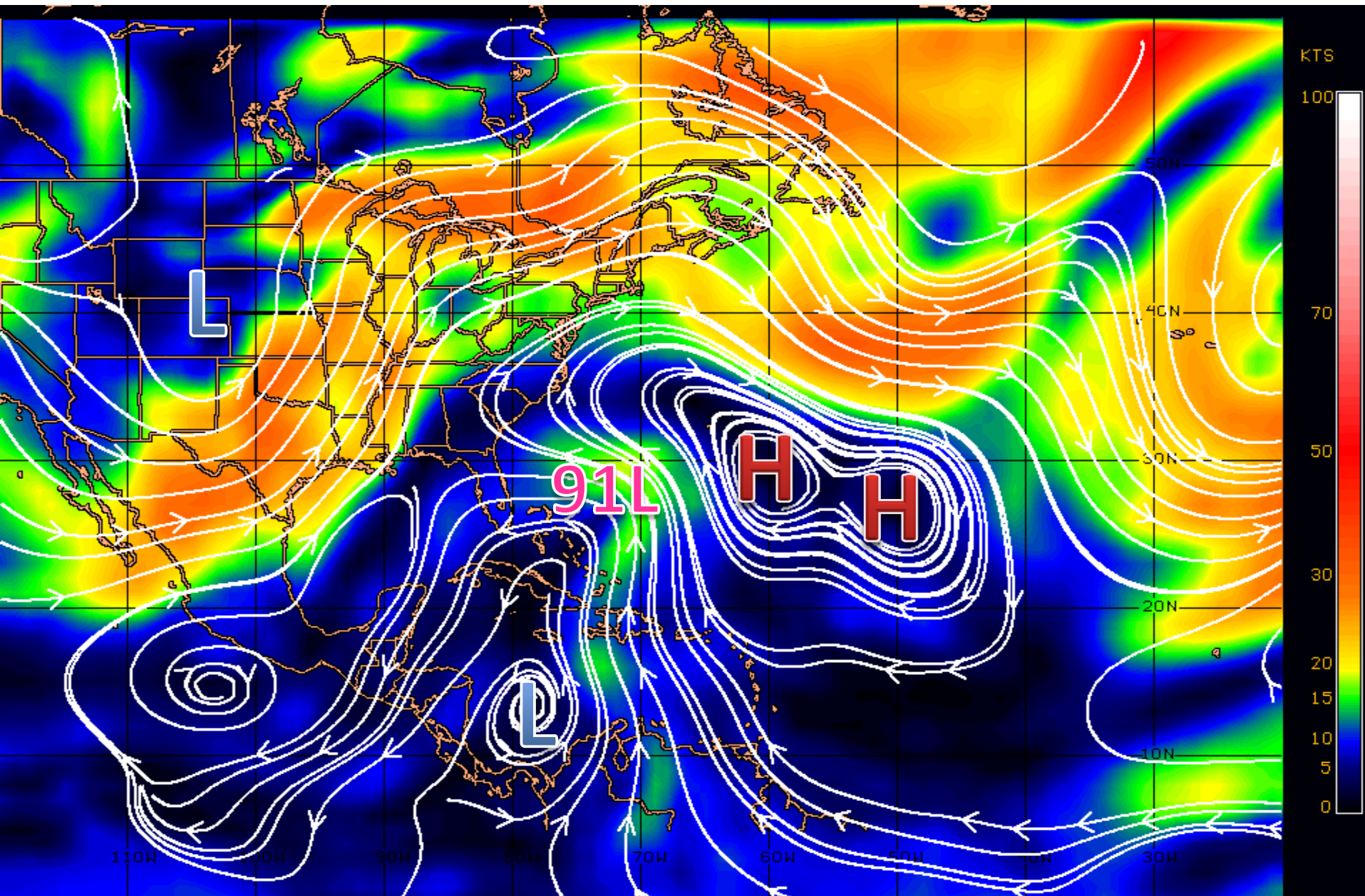
6

6

WSI®



# Steering Currents

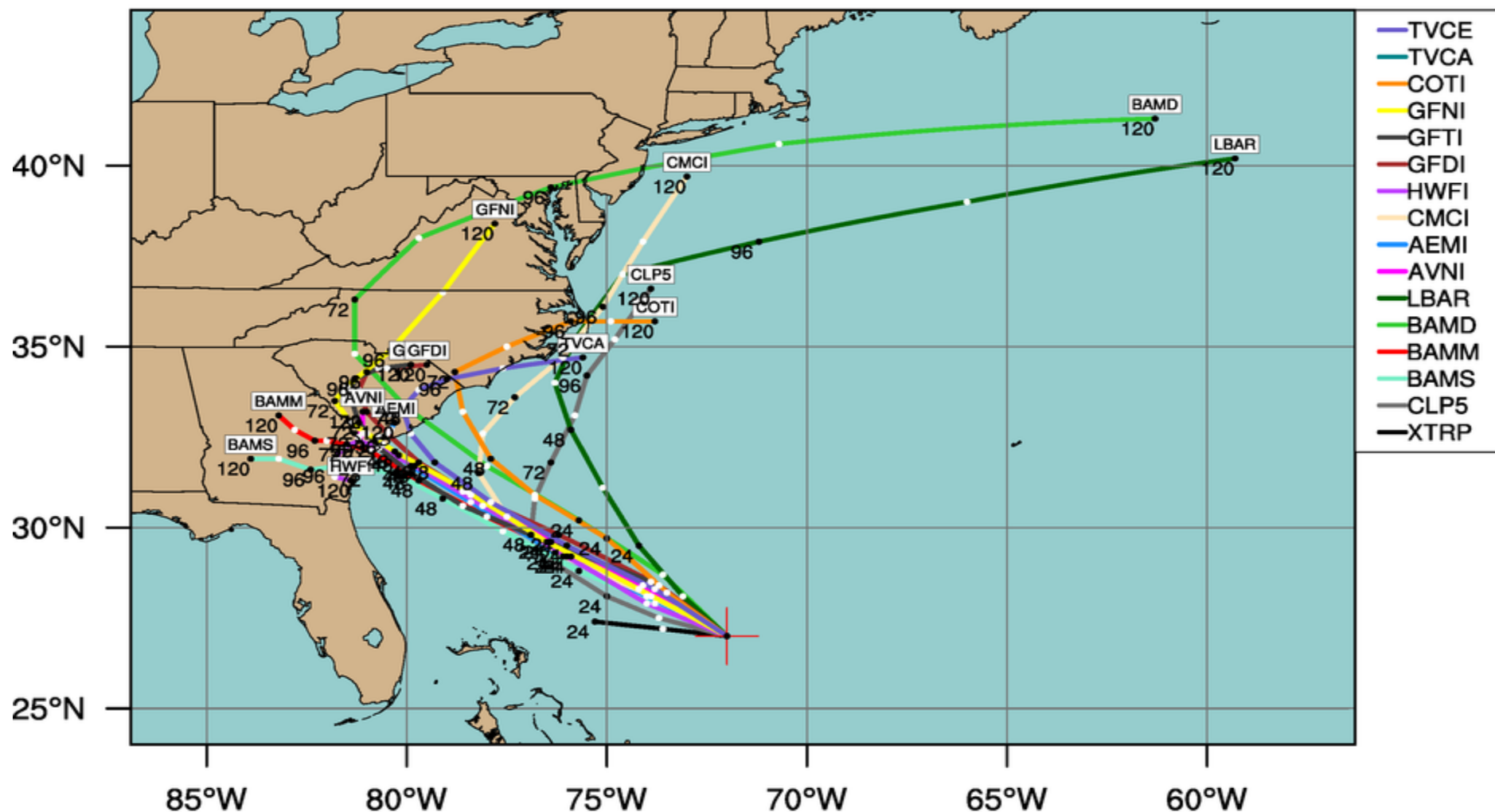


# LOW INVEST (AL91)

Early-cycle track guidance initialized at 0600 UTC, 27 May 2016

Current Intensity: 30 kt

Current Basin: North Atlantic



By using this plot, the user agrees to the UCAR Terms of Use  
which can be accessed at: <http://www2.ucar.edu/terms-of-use>

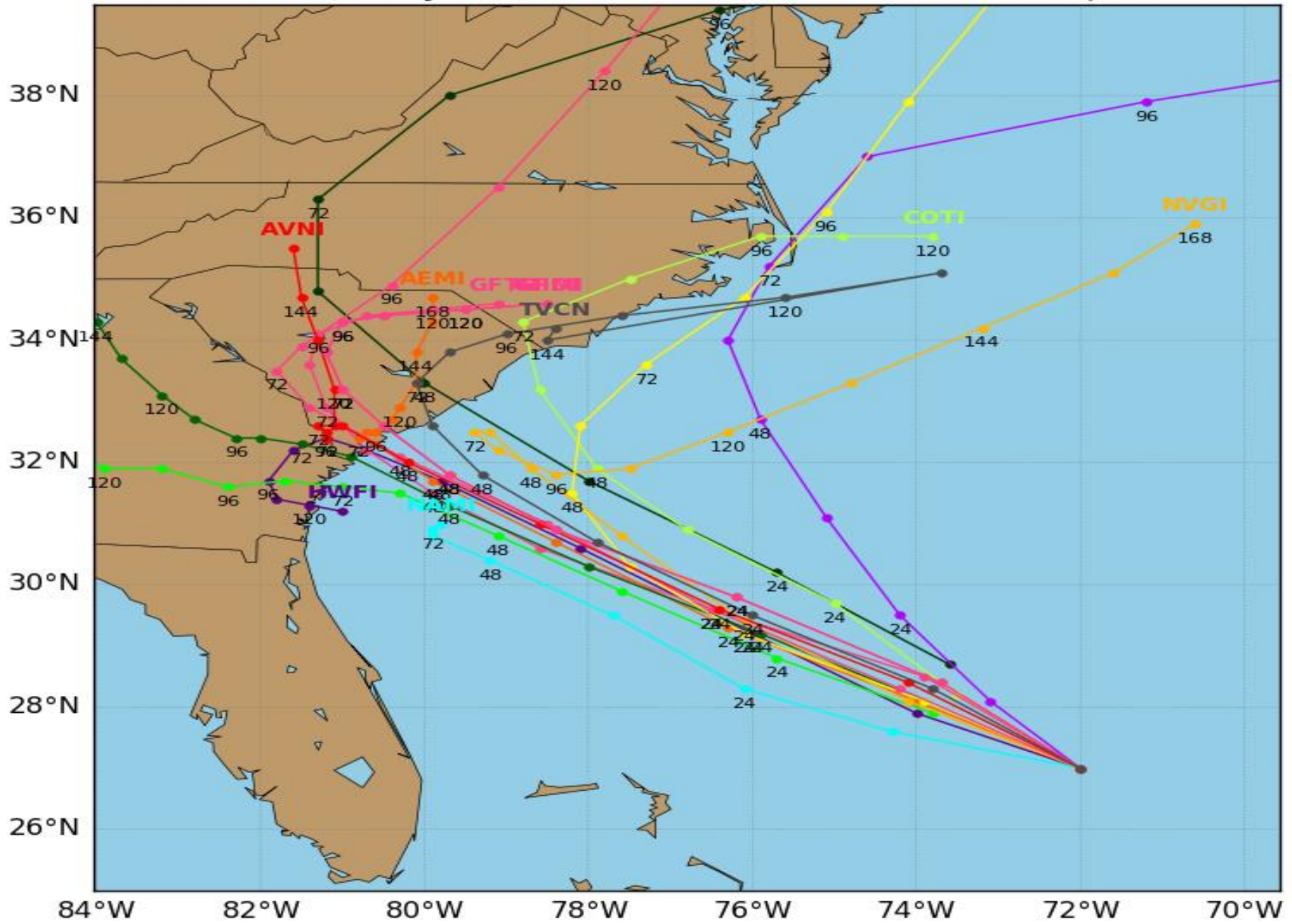
Plot generated at 0749 UTC 27 May 2016



# Invest 91L Model Track Guidance

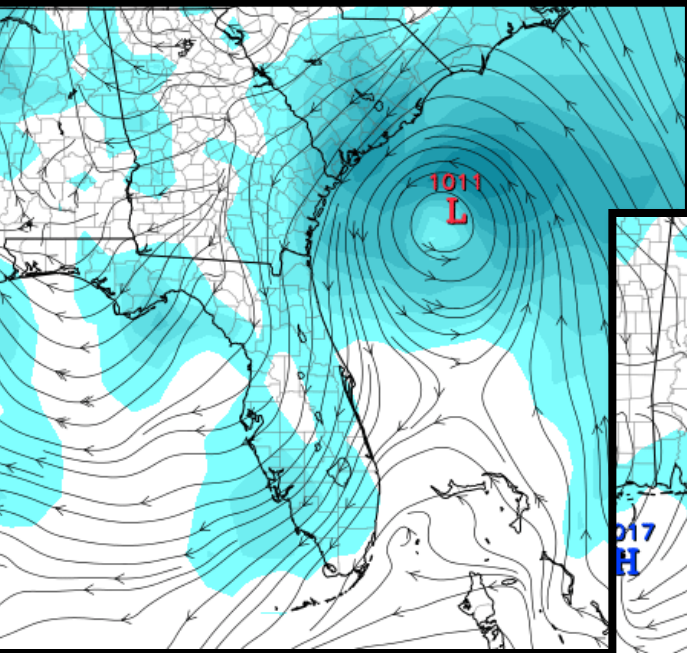
Initialized at 06z May 27 2016

Levi Cowan - tropicaltidbits.com

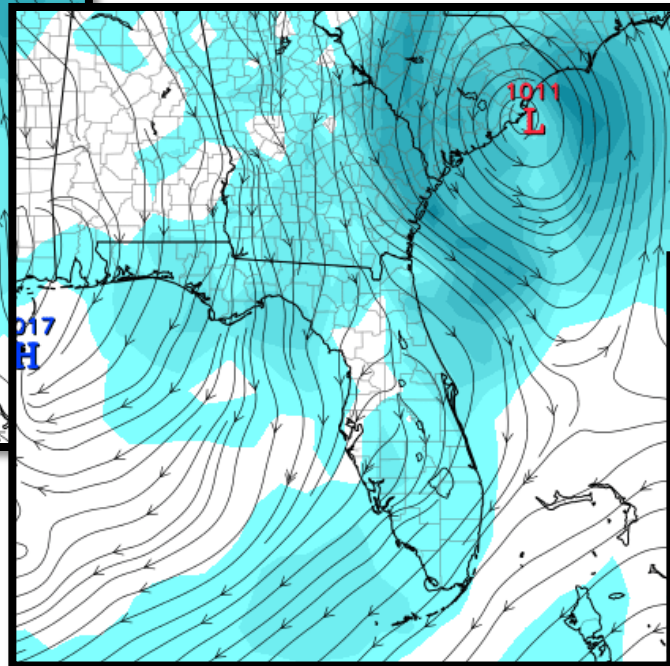


# European Model Output

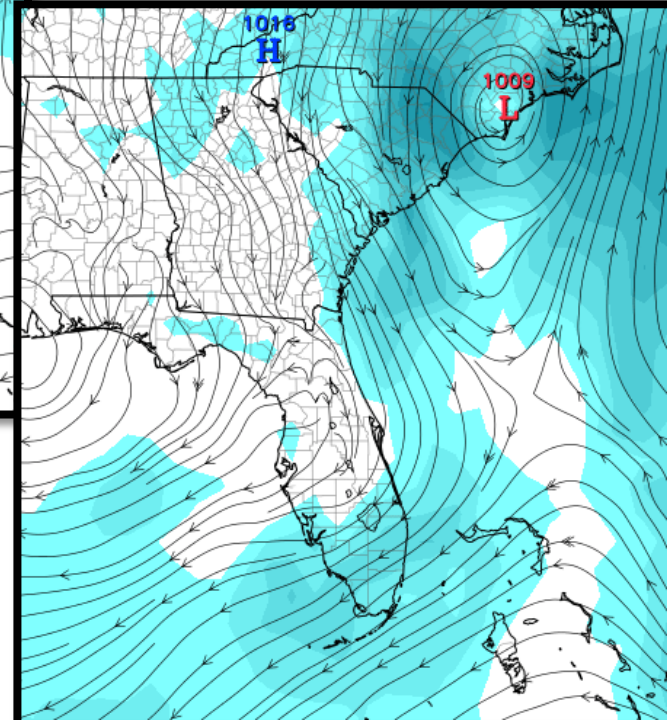
Saturday Night



Sunday Night

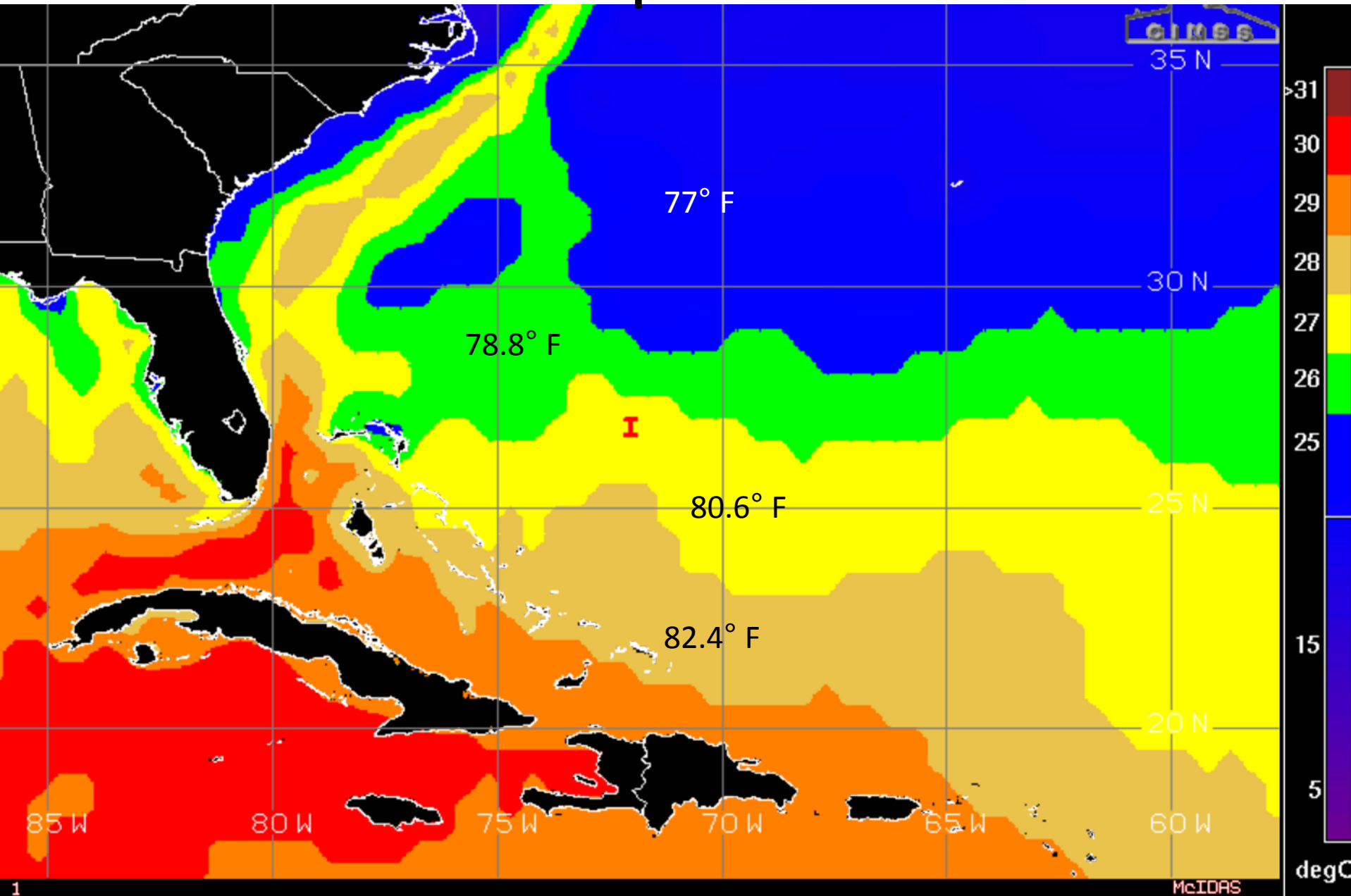


Monday Night

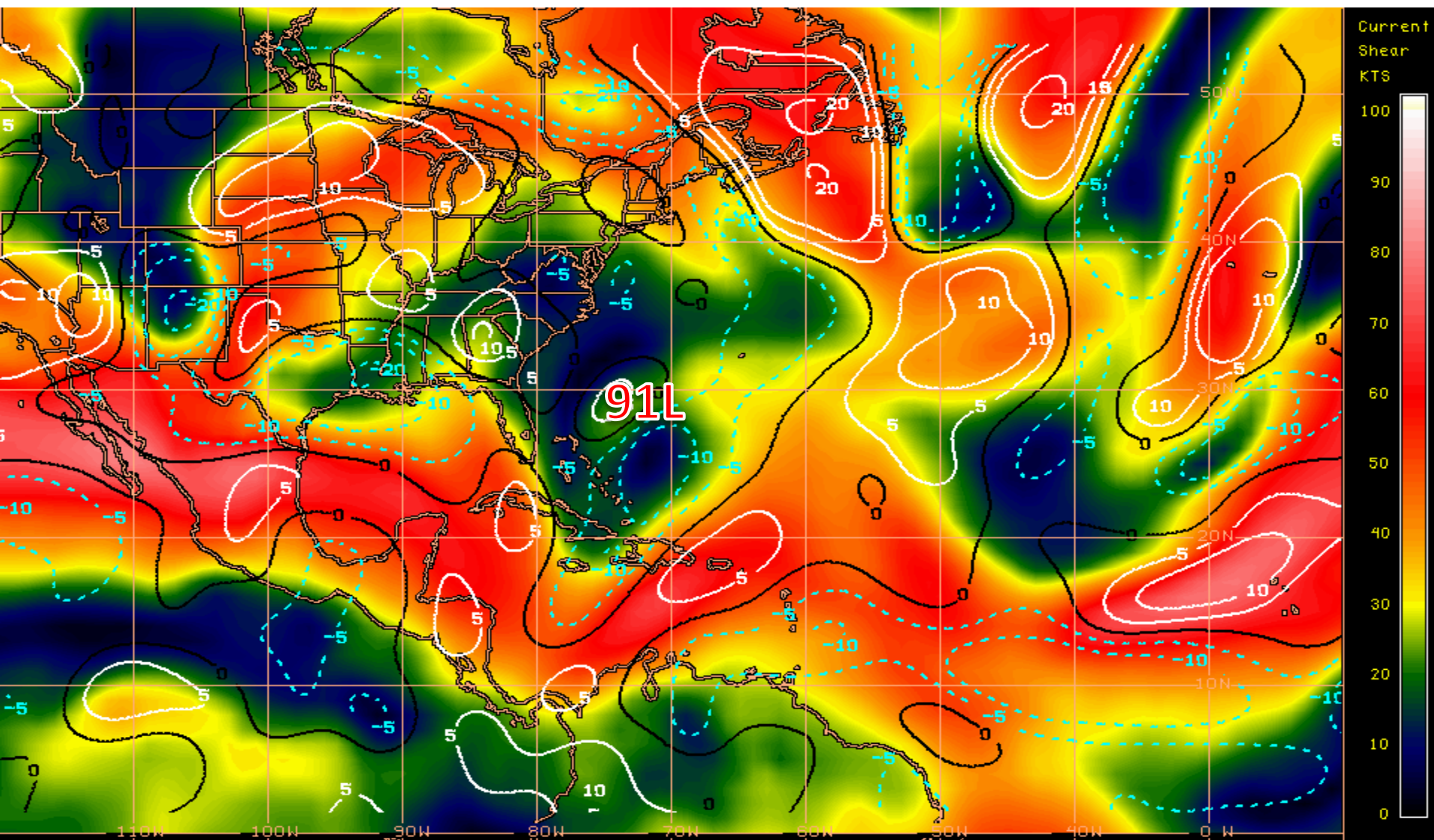




# Sea Surface Temperatures Near 91L

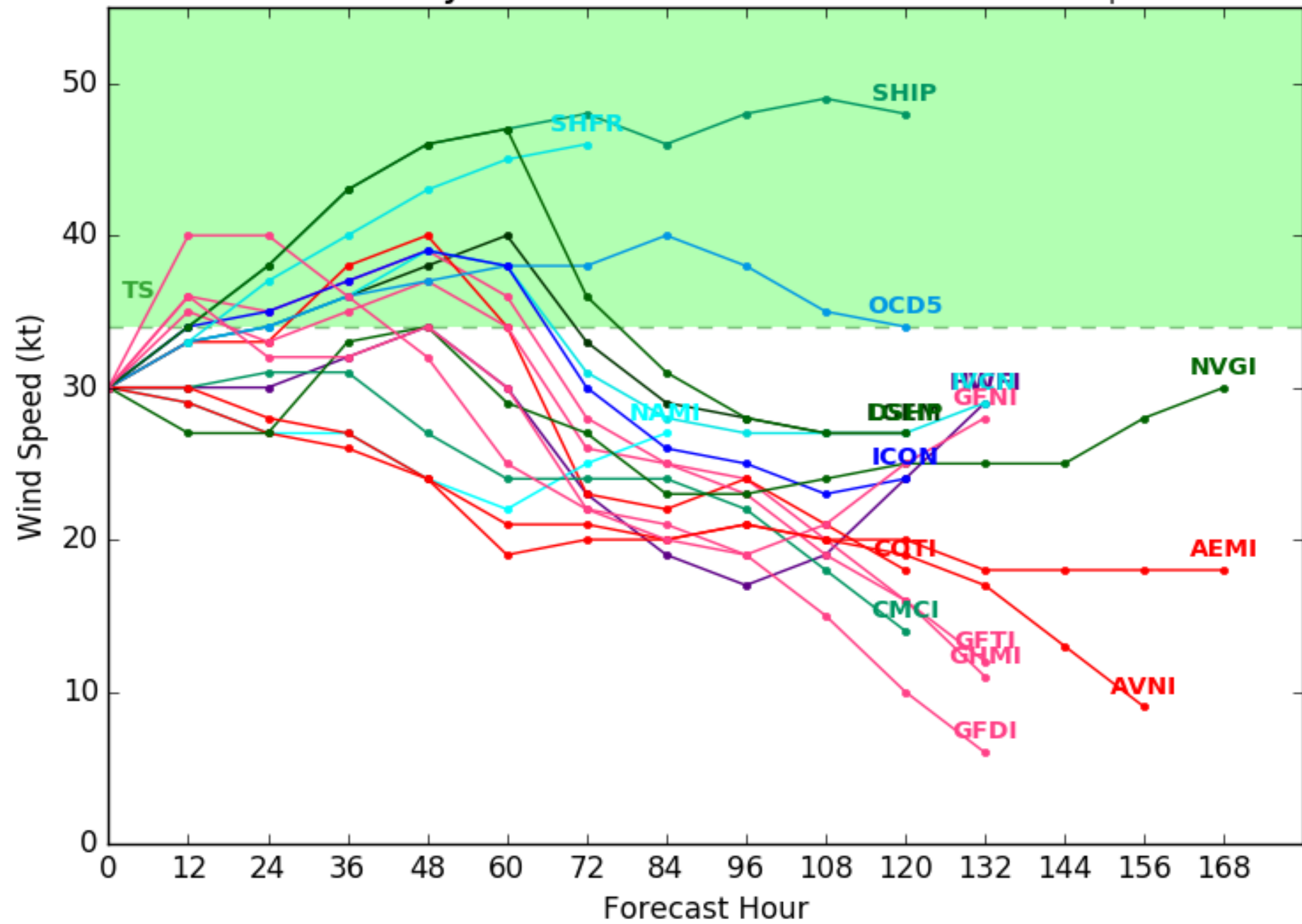


# Current Wind Shear (shaded) and Shear Tendency (lines)

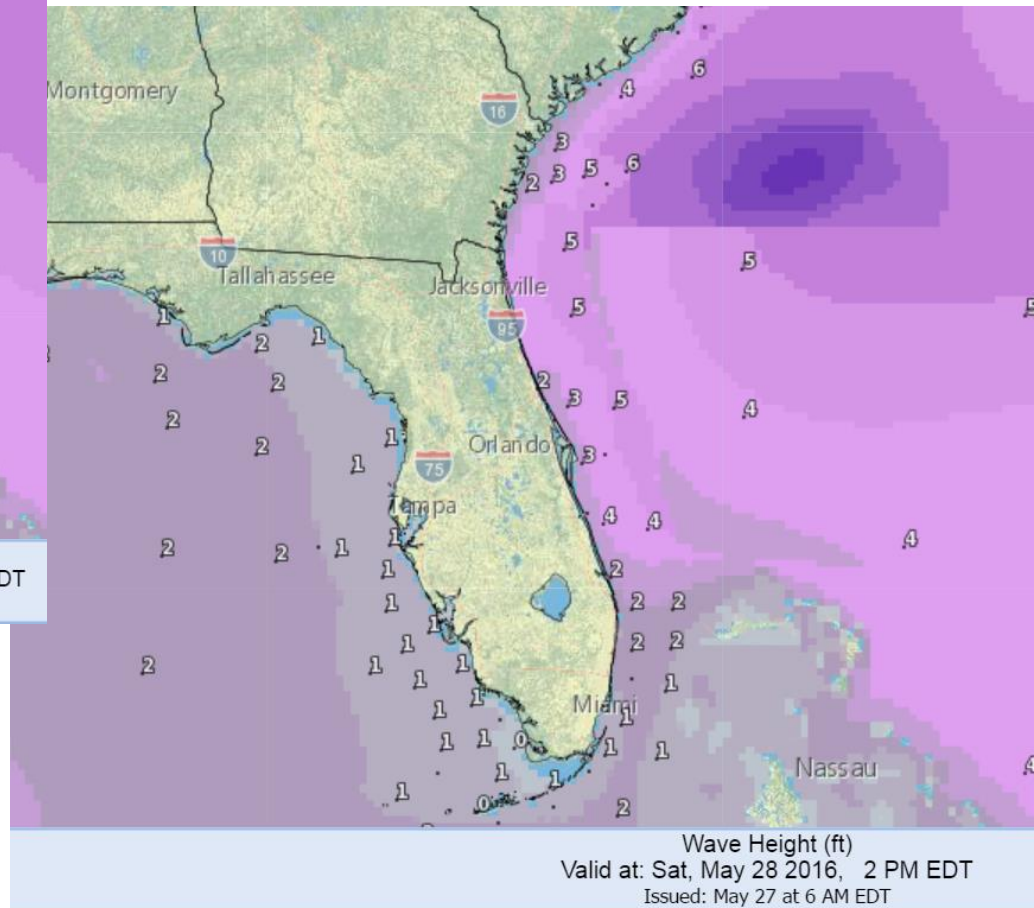
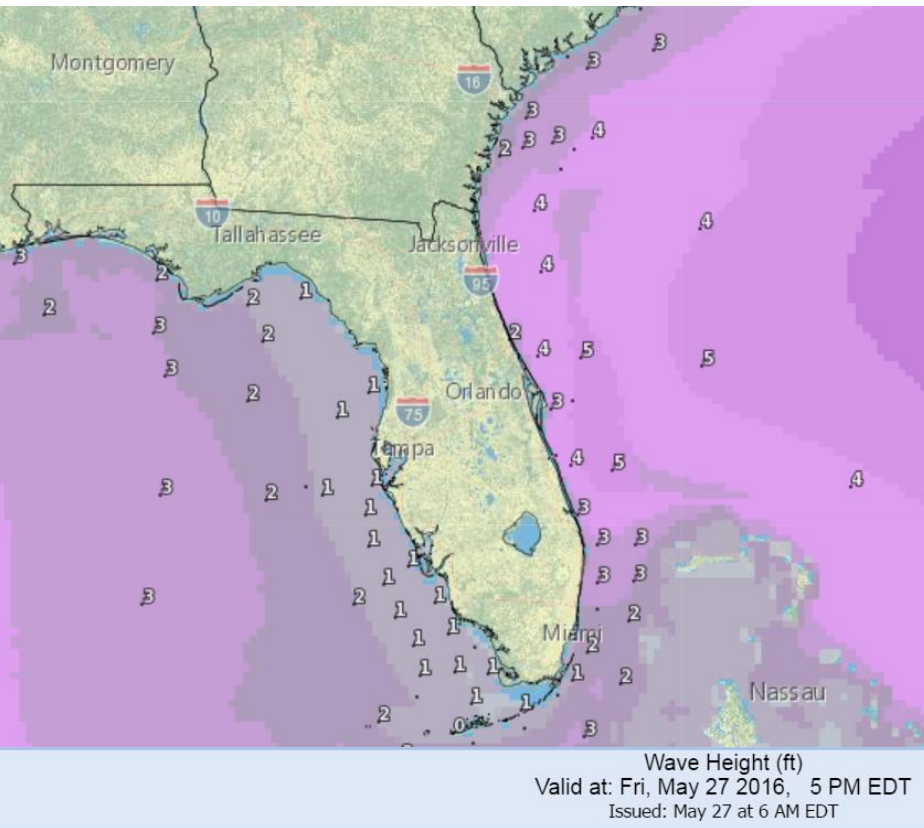


Shear Tendency (KTS) Over Past 24 Hours: Increasing — Decreasing ----



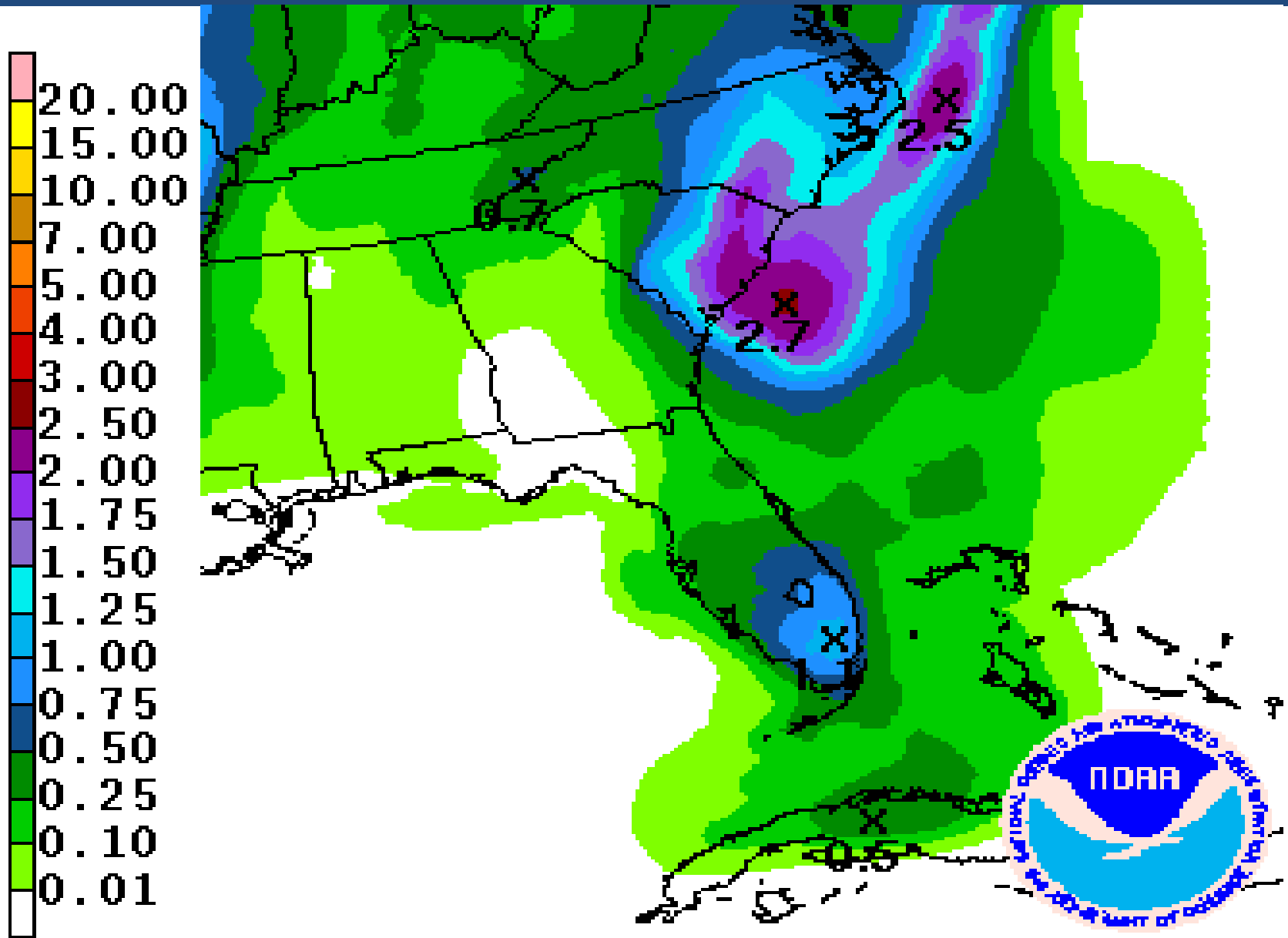


# Forecast Wave Heights (feet) – Friday & Saturday



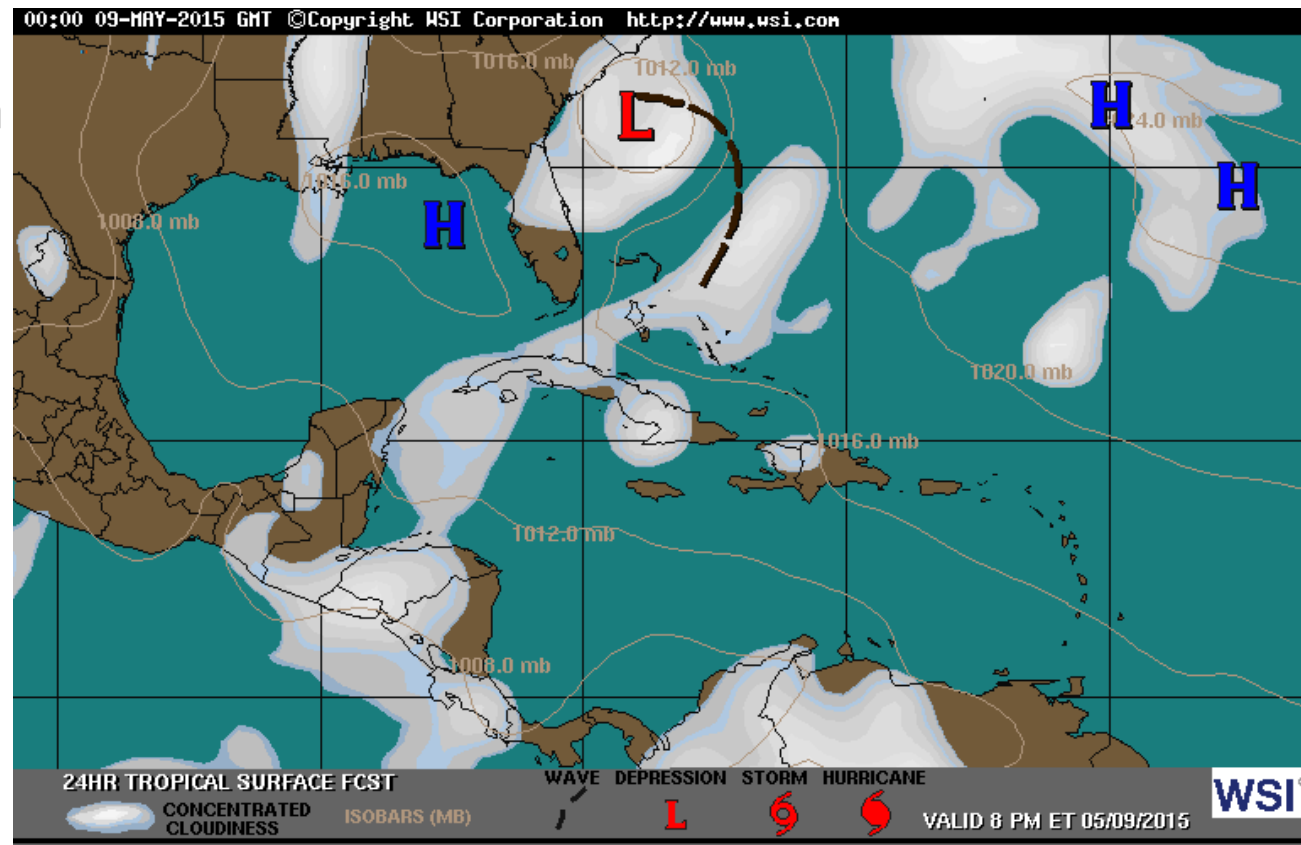


# Forecast Total Rainfall Accumulations for next 5 Days



# What is a Sub-Tropical Storm?

- Has both tropical and winter-weather low pressure attributes
- May have a decayed frontal boundary attached
- Usually has a large center of circulation with minimal storm activity near the center
- Highest winds usually away from the center
- Non-symmetric distribution of winds and thunderstorms





# Summary

## **Summary:**

- Shower activity associated with the low pressure area (91L) located northeast of the Bahamas, or about 515 miles east of Port St. Lucie, Florida, continues to show signs of organization, and the circulation of the low has become a little better defined overnight.
- Environmental conditions are conducive for development, and a tropical or subtropical cyclone could form today or Saturday.
- As a result, the National Hurricane Center is forecasting a 90% (high) chance of becoming a tropical cyclone within the next 2 days.
- The low is forecast to move slowly west-northwestward or northwestward and approach the southeastern United States between Georgia and the Carolinas over the weekend.
- Computer models are in a fair amount of agreement, suggesting a movement towards the Savannah/Charleston area through the next 48-72 hours, then possibly stalling in the area for a day or so before being pushed northeast.
- There is still some disagreement on the future intensity of this system, which is common with newly developing systems, with about half of the models predicting a weak tropical or sub-tropical storm and the others predicting a depression or less.
- Hurricane Hunter reconnaissance aircraft is scheduled to investigate the system this afternoon and will give a better indication of strength and atmospheric contributors for development.
- If the system develops, the next name on the 2016 storm name list is Bonnie.

## **Florida Outlook:**

- Regardless of development, this system may bring increased rain chances to portions of the Florida Eastern Peninsula this weekend.
- In addition, increased wave heights are expected along the Northeast and East Central Florida coast beginning today and will lead to an increased risk of rip currents through the weekend.

Another briefing packet will be issued this afternoon.

For more information on this system visit the NHC website at [www.nhc.noaa.gov](http://www.nhc.noaa.gov)



# TROPICAL UPDATE

Created by:

Amy Godsey, Chief State Meteorologist  
[amy.godsey@em.myflorida.com](mailto:amy.godsey@em.myflorida.com)

State Meteorological Support Unit  
Florida Division of Emergency  
Management

Users wishing to subscribe (approval pending) to this distribution list, register at [https://public.govdelivery.com/accounts/FLDEM/subscriber/new?topic\\_id=SERT\\_Met\\_Tropics](https://public.govdelivery.com/accounts/FLDEM/subscriber/new?topic_id=SERT_Met_Tropics).

Other reports available for subscription are available at <https://public.govdelivery.com/accounts/FLDEM/subscriber/new?preferences=true>