



TROPICAL UPDATE

9 AM EDT

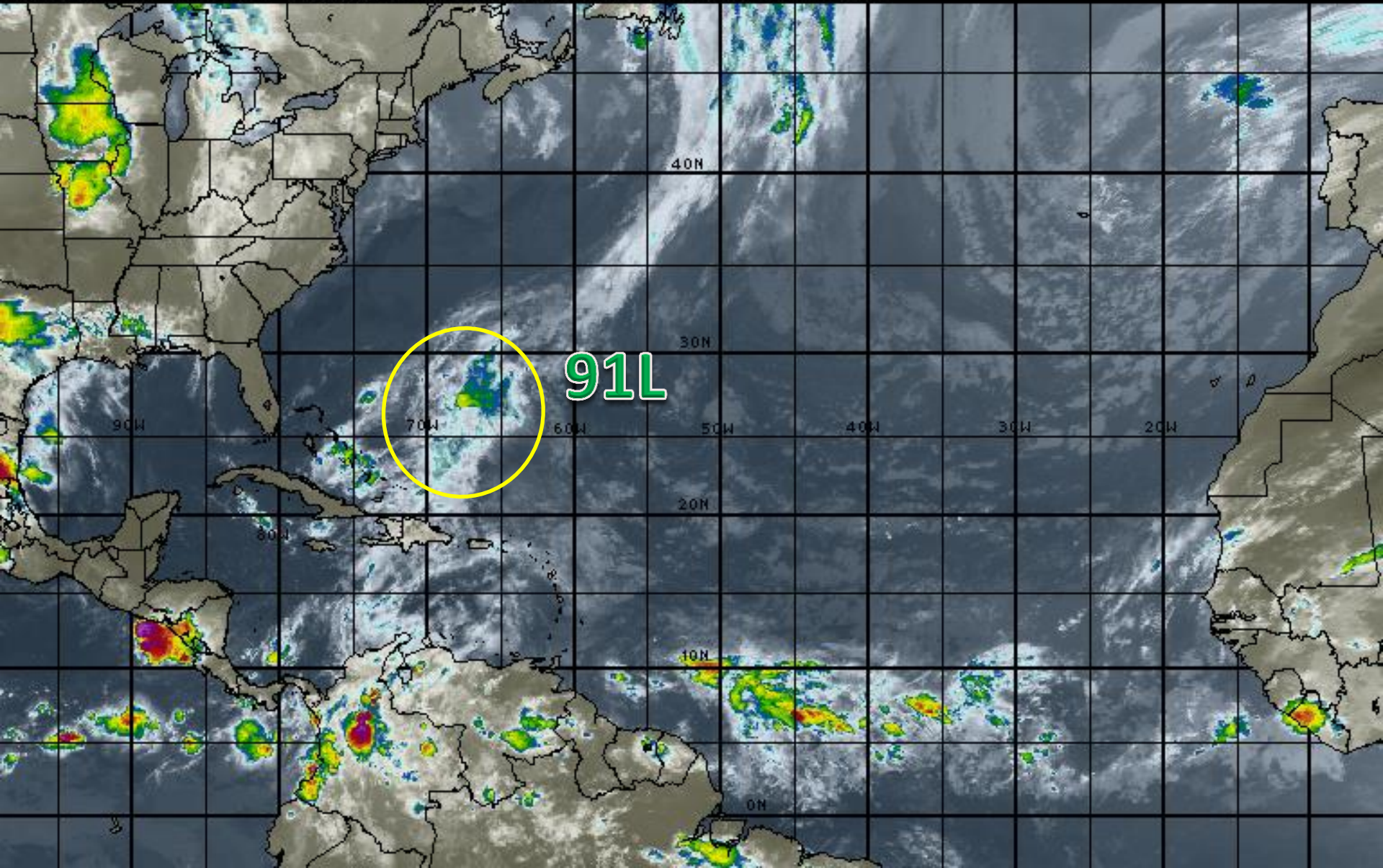
Thursday, May 26, 2016

Invest 91L

This update is intended for government and emergency response officials, and is provided for informational and situational awareness purposes only. Forecast conditions are subject to change based on a variety of environmental factors. For additional information, or for any life safety concerns with an active weather event please contact your County Emergency Management or Public Safety Office, local National Weather Service forecast office or visit the National Hurricane Center website at www.nhc.noaa.gov.

Atlantic Basin Satellite Image

09:00 26-MAY-2016 GMT ©Copyright WSI Corporation <http://www.wsi.com>





Two-Day Graphical Tropical Weather Outlook

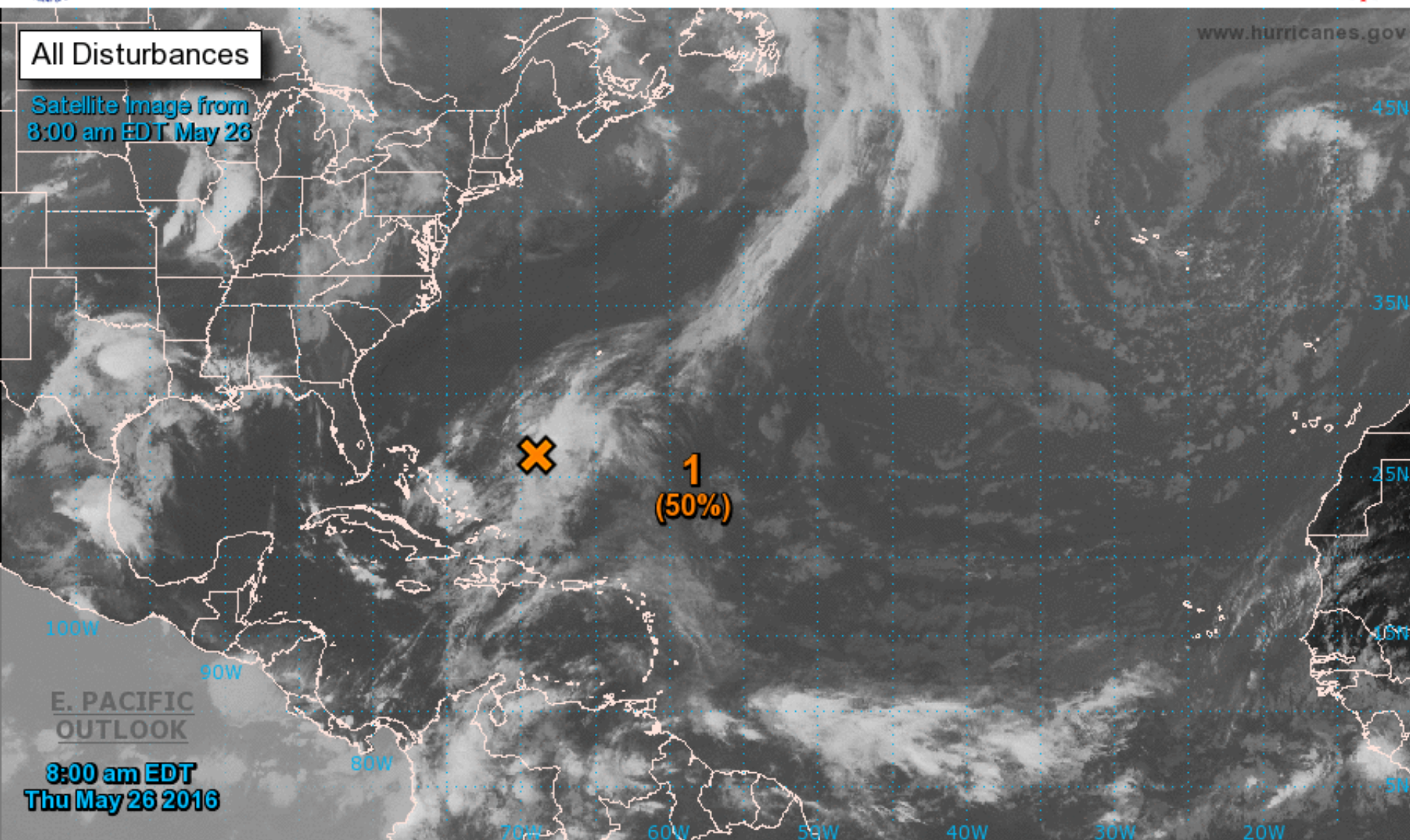
National Hurricane Center Miami, Florida



All Disturbances

Satellite Image from
8:00 am EDT May 26

www.hurricanes.gov



8:00 am EDT
Thu May 26 2016

Current Disturbances and Two-Day Cyclone Formation Chance: < 40% 40-60% > 60%

Tropical or Sub-Tropical Cyclone: Depression Storm Hurricane

Post-Tropical Cyclone Remnants



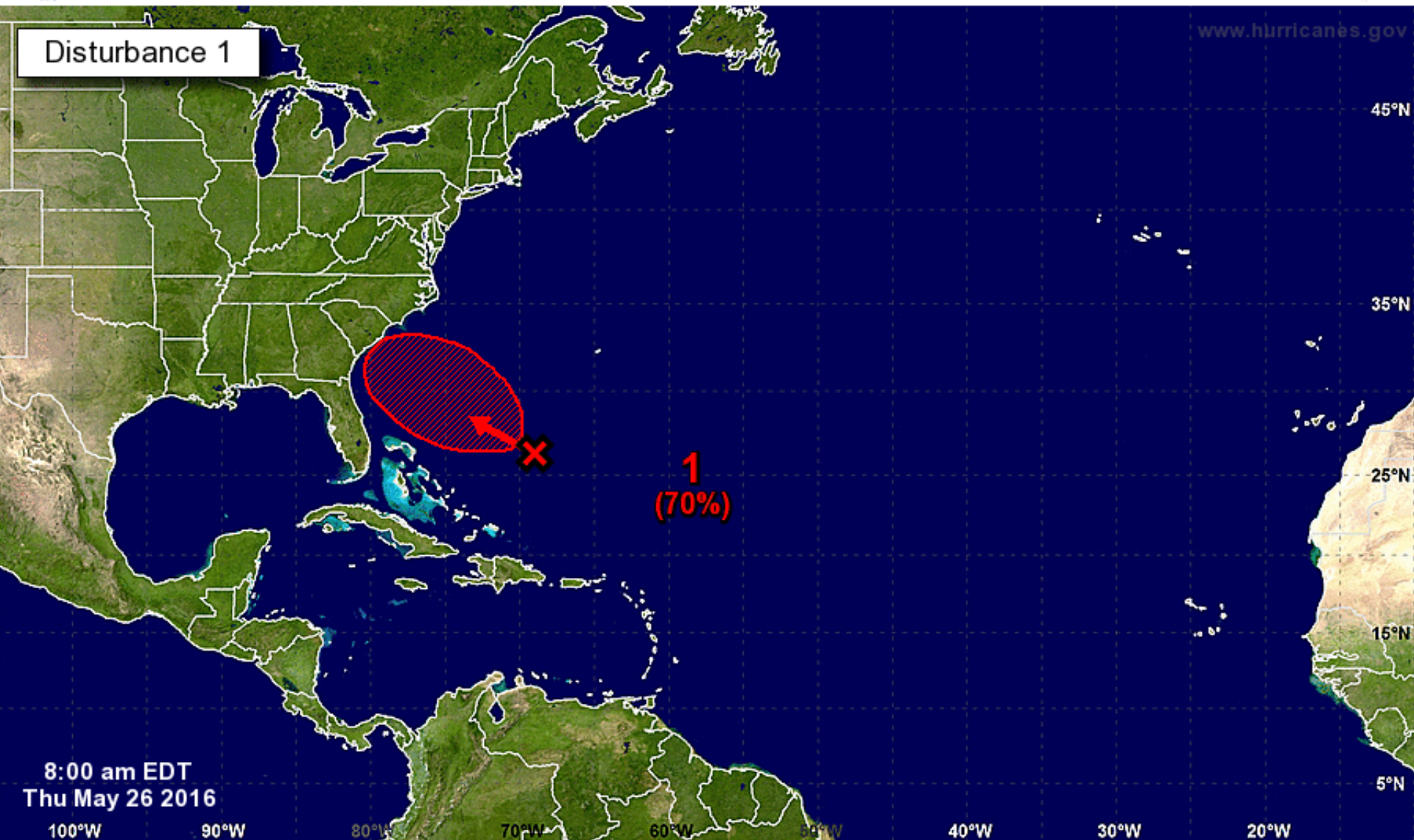
Five-Day Graphical Tropical Weather Outlook

National Hurricane Center Miami, Florida



www.hurricanes.gov

Disturbance 1



Tropical Cyclone Formation Potential for the Five-Day Period Ending at 8:00 am EDT Tue May 31 2016

Chance of Cyclone Formation in Five Days: ■ Low < 40% ■ Medium 40-60% ■ High > 60%

X indicates current disturbance location; shading indicates potential formation area.

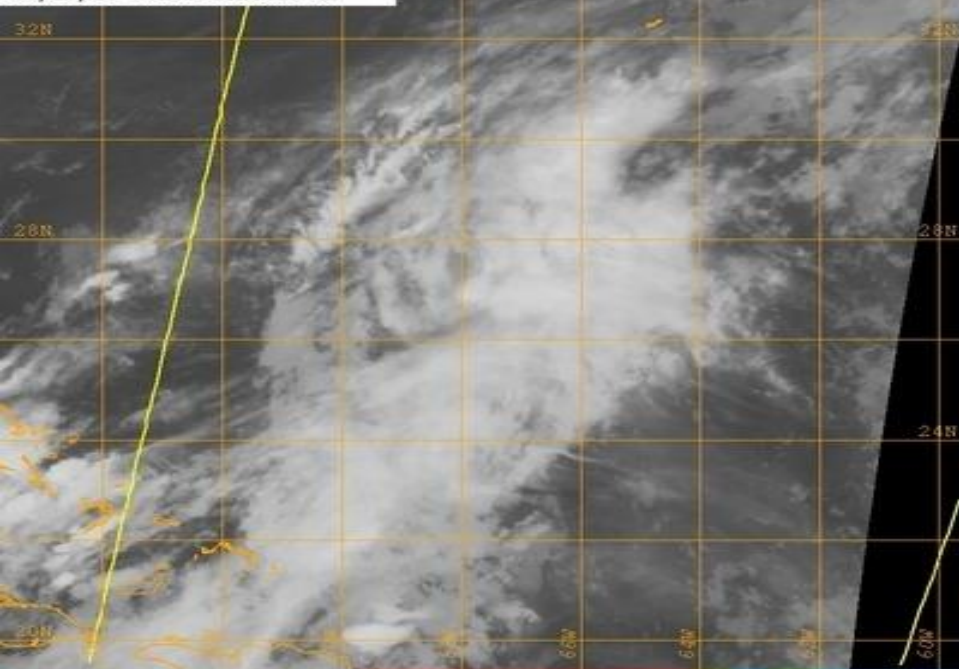
Invest 91L
8 AM Thu May 26 2016
Position 26.6 69.5 W
Maximum Winds 30 mph
Movement WNW at 5 mph

Blue Marble basemap imagery courtesy NASA

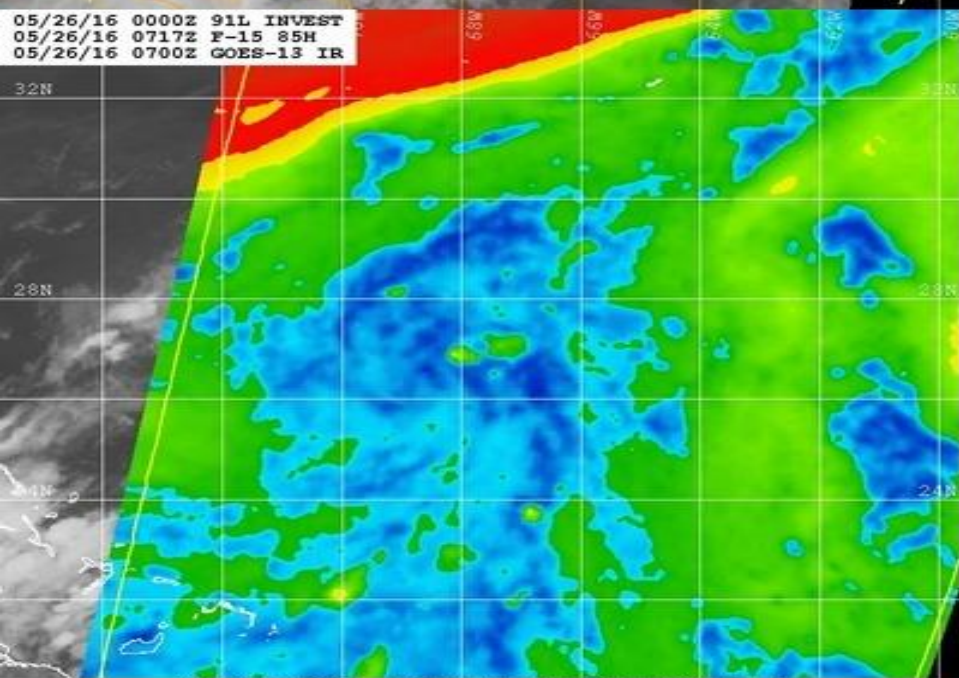
Satellite 12:16 PM UTC
12:16 PM GMT



05/26/16 0000Z 91L INVEST
05/26/16 0717Z F-15 OVERPASS
05/26/16 0700Z GOES-13 IR



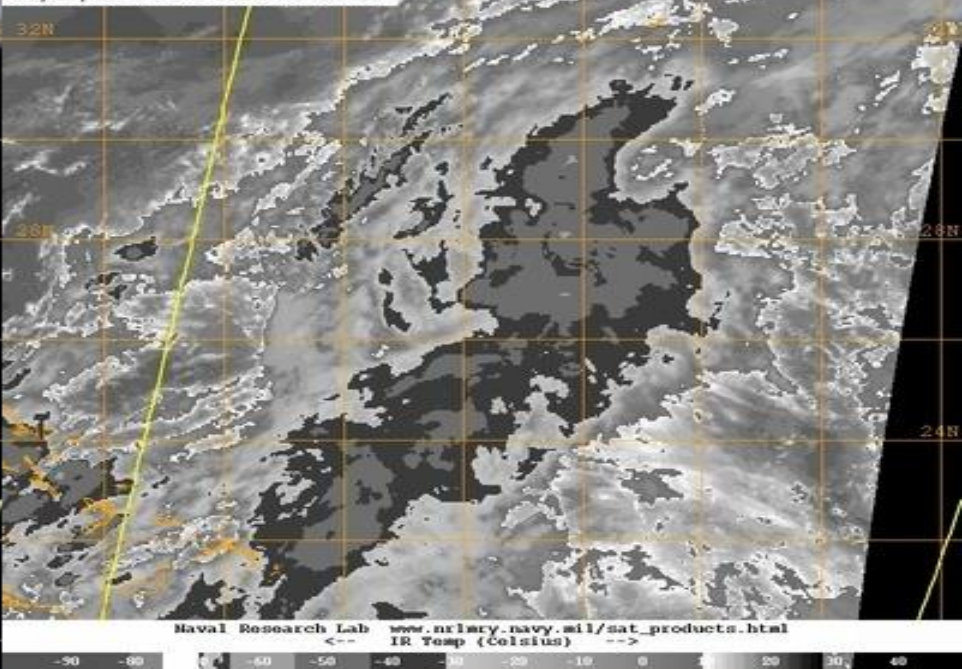
05/26/16 0000Z 91L INVEST
05/26/16 0717Z F-15 85H
05/26/16 0700Z GOES-13 IR



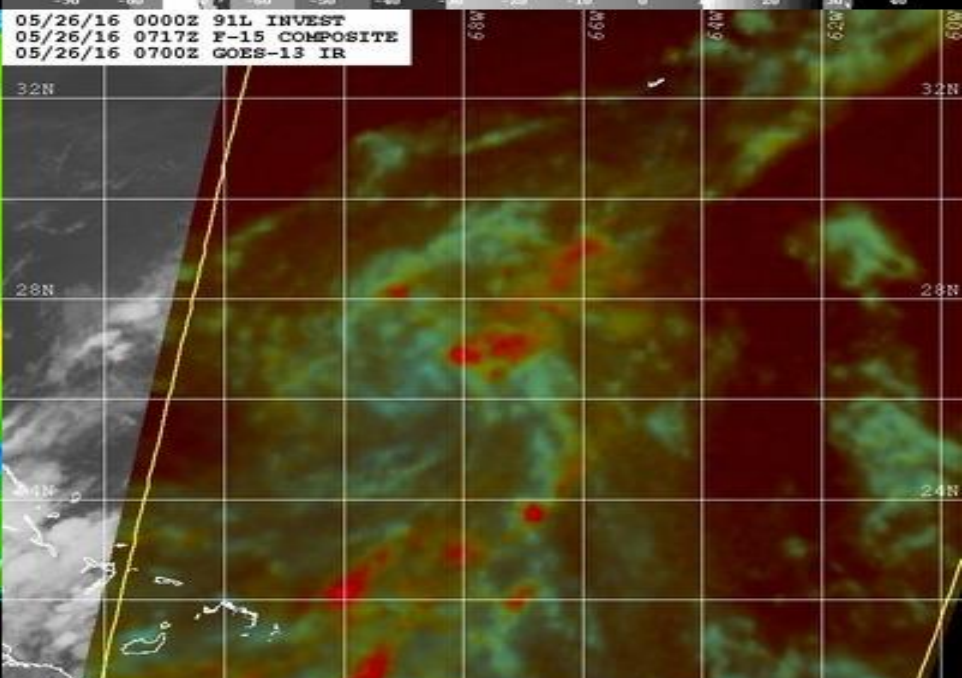
Naval Research Lab www.nrlmry.navy.mil/sat_products.html
85H Brightness Temp (Kelvin)

190 200 210 220 230 240 250 260 270

05/26/16 0000Z 91L INVEST
05/26/16 0717Z F-15 OVERPASS
05/26/16 0700Z GOES-13 IR-BD



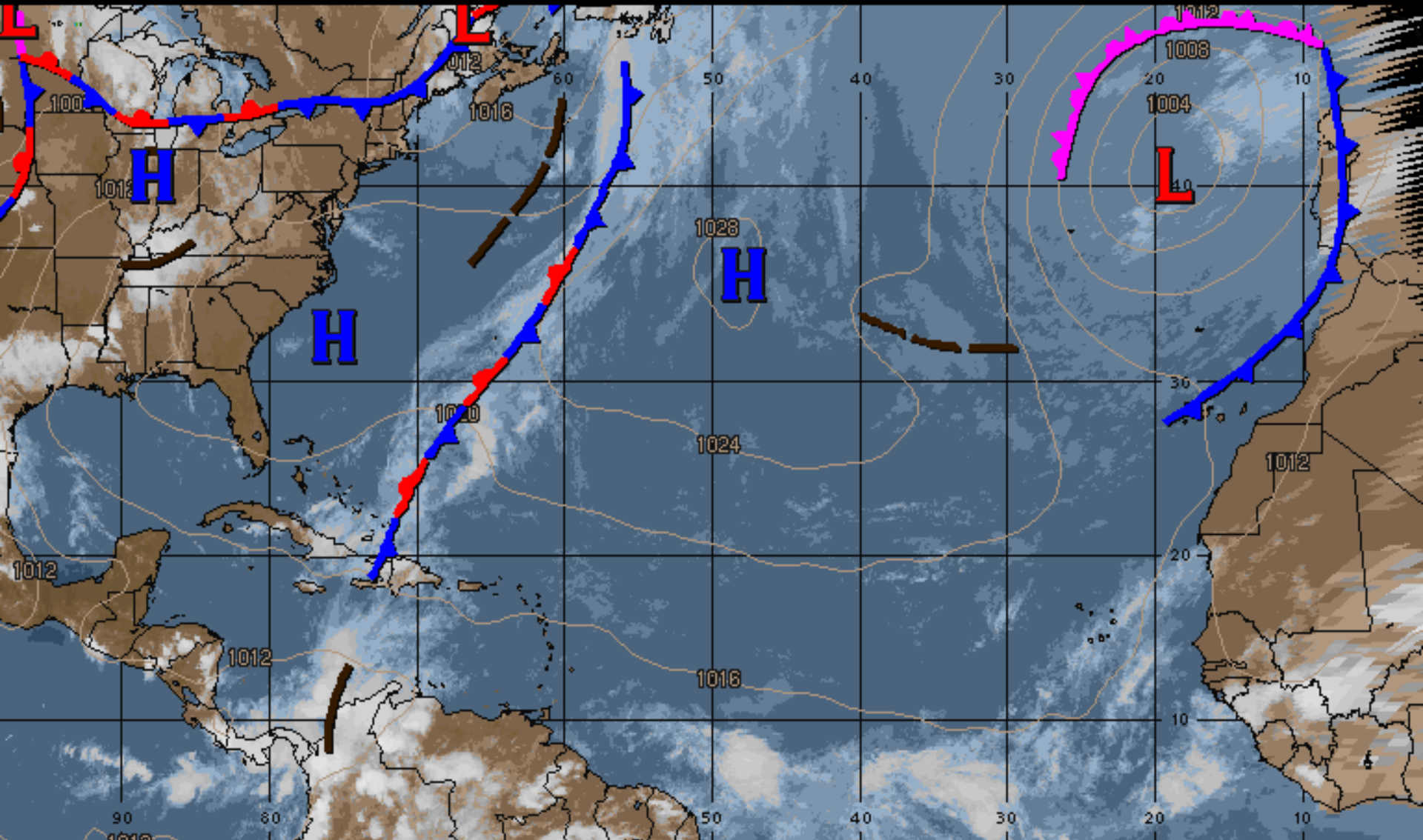
05/26/16 0000Z 91L INVEST
05/26/16 0717Z F-15 COMPOSITE
05/26/16 0700Z GOES-13 IR



Naval Research Lab www.nrlmry.navy.mil/sat_products.html
Red=85PCT Green=85H Blue=85V

Surface Weather Map

00:00 26-MAY-2016 GMT ©Copyright WSI Corporation <http://www.wsi.com>



TROPICAL SURFACE ANALYSIS

Valid 7 PM ET 25-May-16

WAVE DEPRESSION STORM HURRICANE

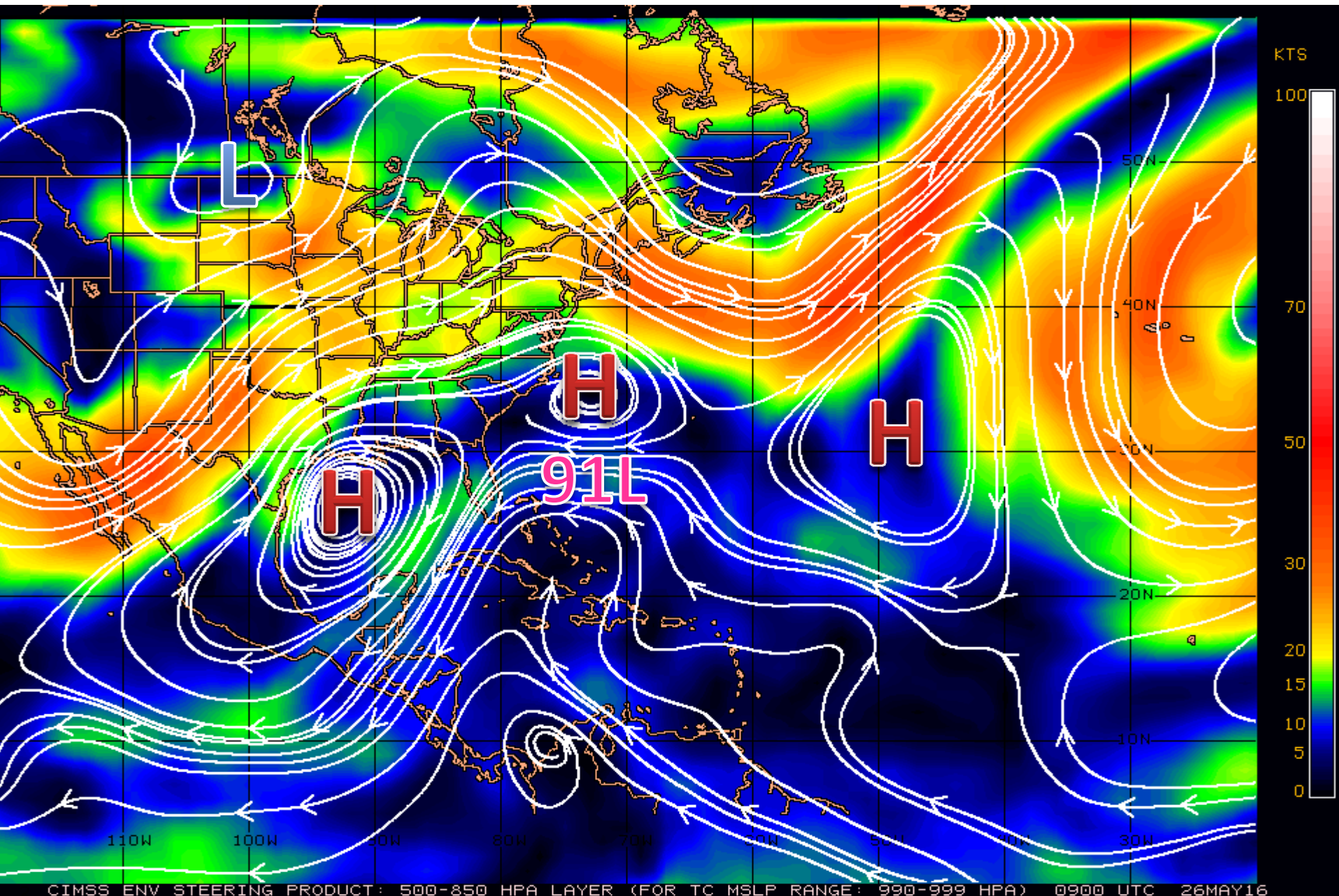
L

6

6

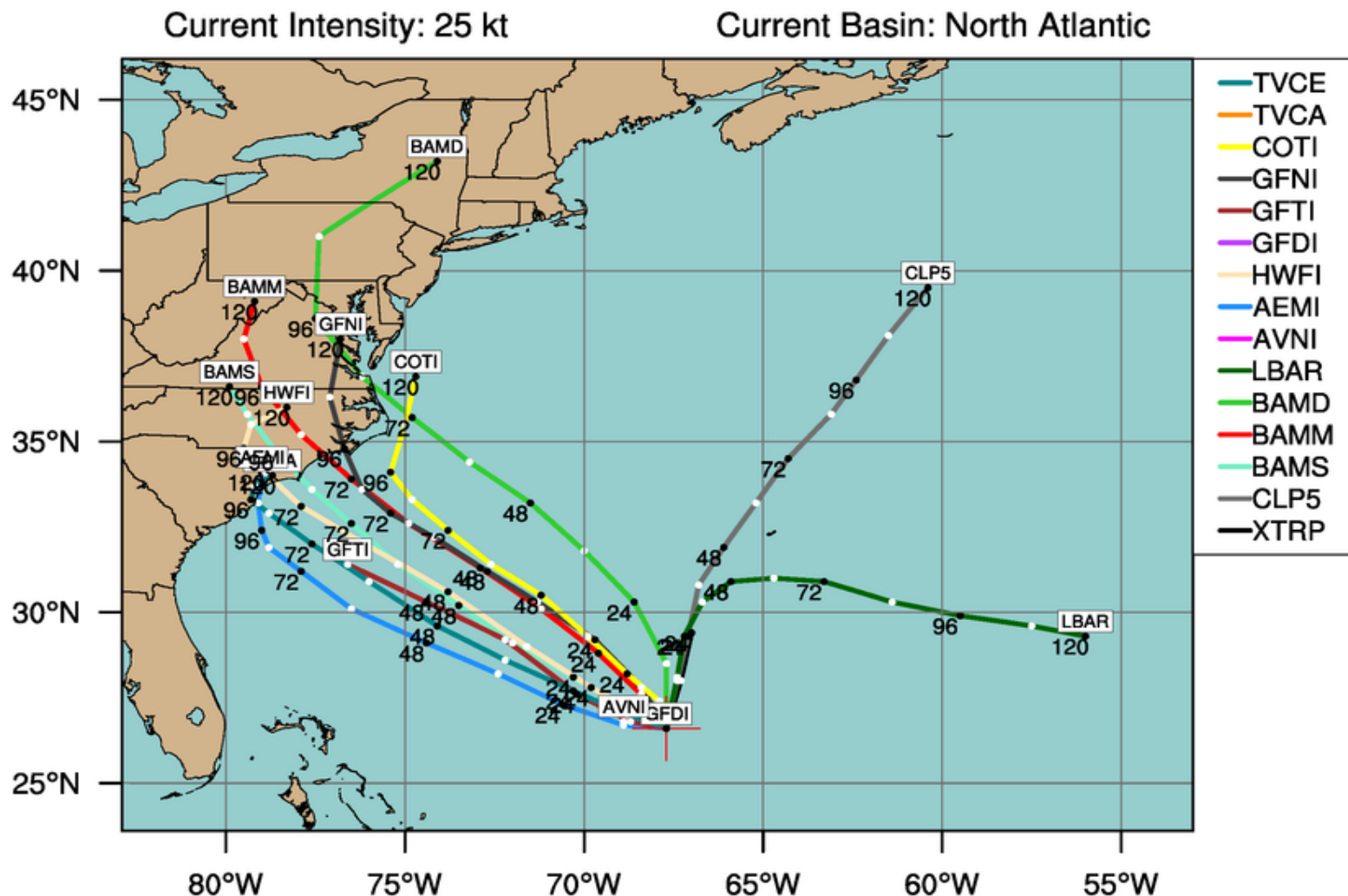
WSI®

Steering Currents



LOW INVEST (AL91)

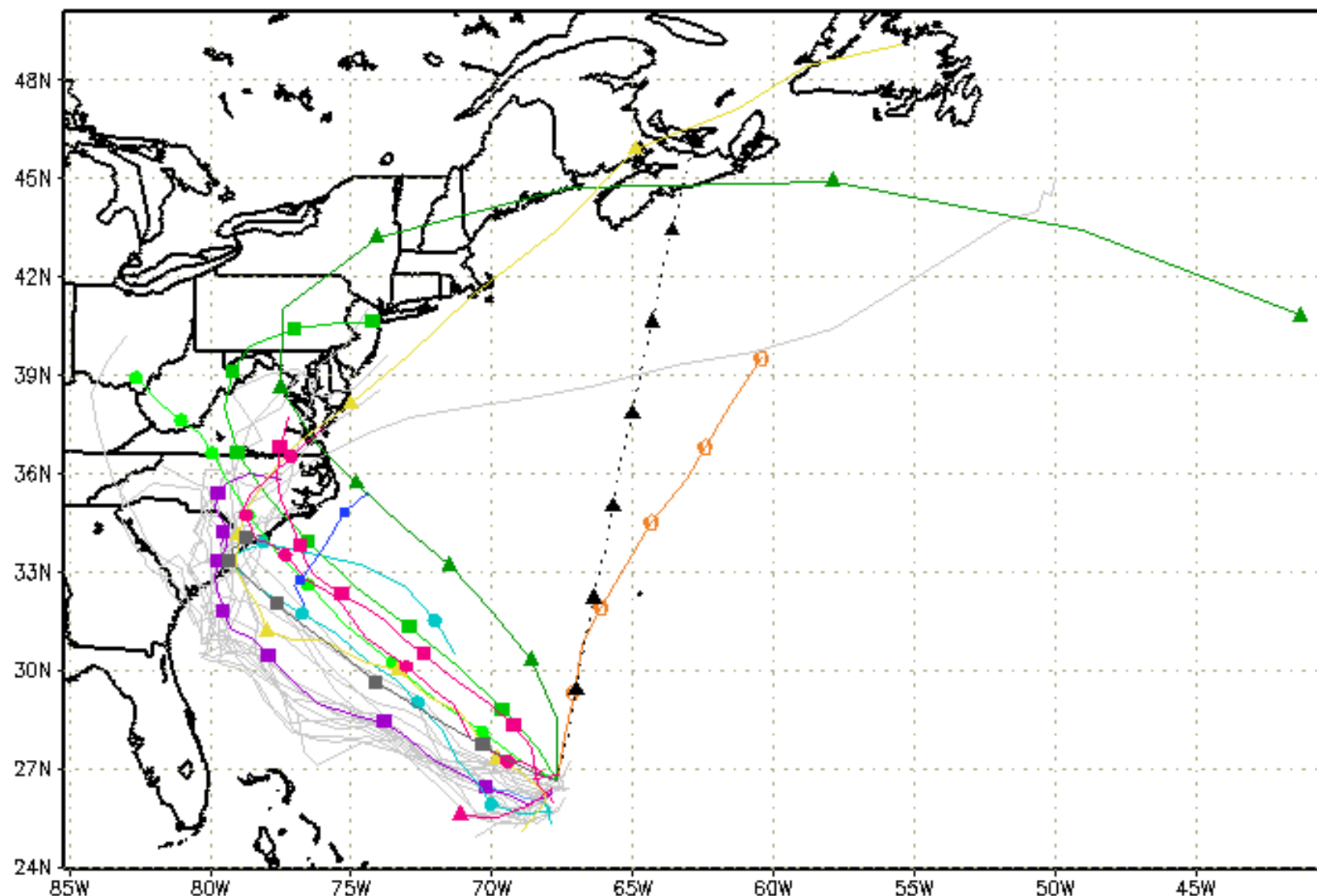
Early-cycle track guidance initialized at 0000 UTC, 26 May 2016



By using this plot, the user agrees to the UCAR Terms of Use
which can be accessed at: <http://www2.ucar.edu/terms-of-use>

Plot generated at 0320 UTC 26 May 2016

---▲--- XTRP 26/0000Z	▲ BAMD 26/0000Z	▲ GFDL 26/0000Z	▲ AVNO 25/1800Z	▲ CMC 25/1200Z
■ TVCN 26/0000Z	■ BAMB 26/0000Z	■ GFDN 25/1800Z	■ AEMN 25/1800Z	■ UKM 26/0000Z
● TV15 Not Avail	● BAMS 26/0000Z	● HWRF 26/0000Z	● APxx 25/1800Z	● NGX 25/1200Z
● NHC Not Avail	○ AHWI Not Avail	○ FIM9 Not Avail	○ GLP5 26/0000Z	



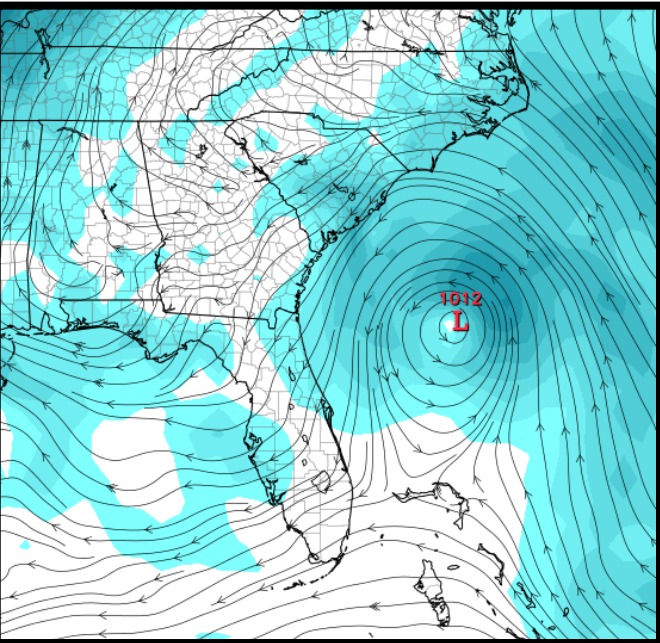
storm_91
 sfwmd.gov
 weather@sfwmd.gov
 26-May 07:51EDT

NHC Advisories and County Emergency Management Statements supersede this product. This graphic should complement, not replace, NHC discussions. If anything on this graphic causes confusion, ignore the entire product. For full info, see <http://my.sfwmd.gov/sfwmd/common/images/weather/plots.html>

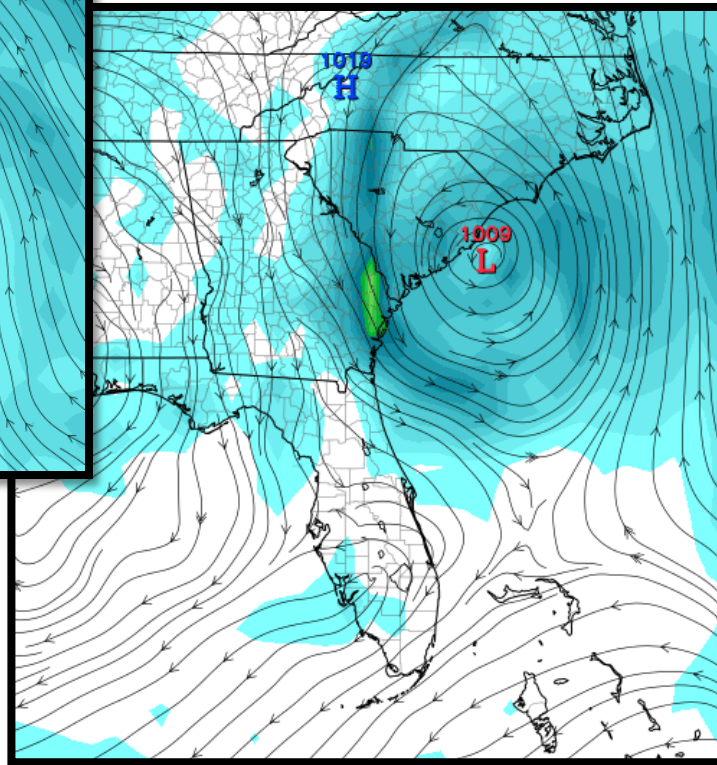


European Model Output

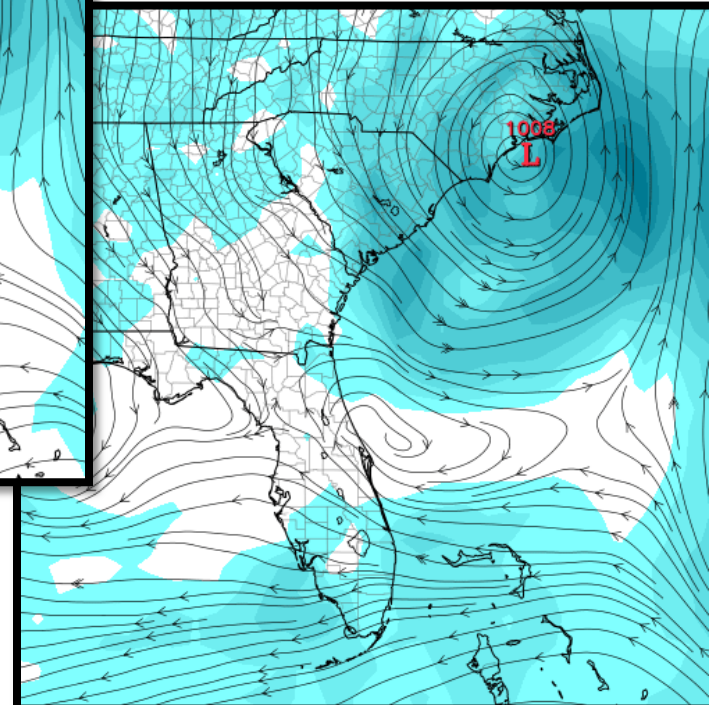
Saturday Night



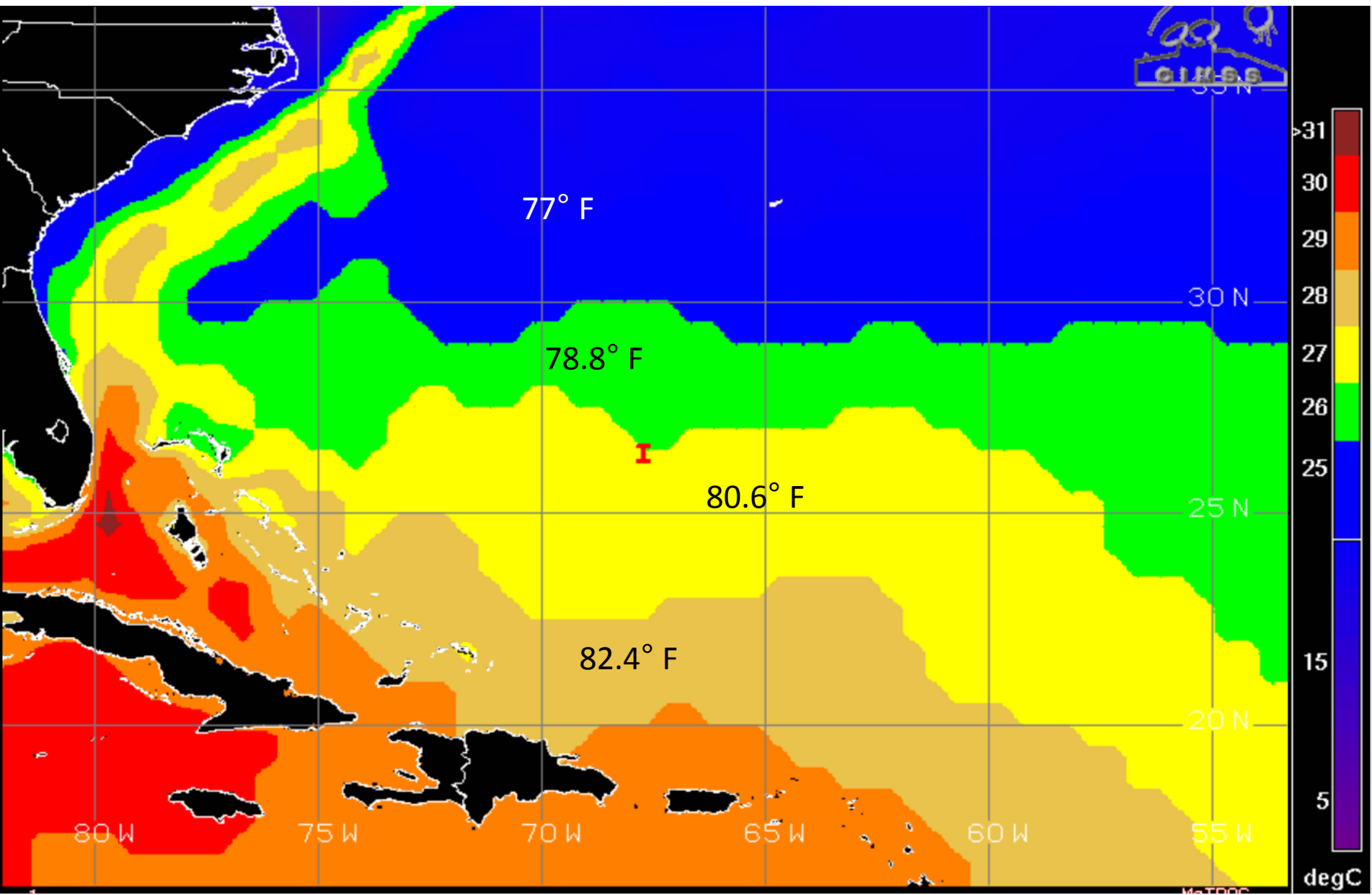
Sunday Night



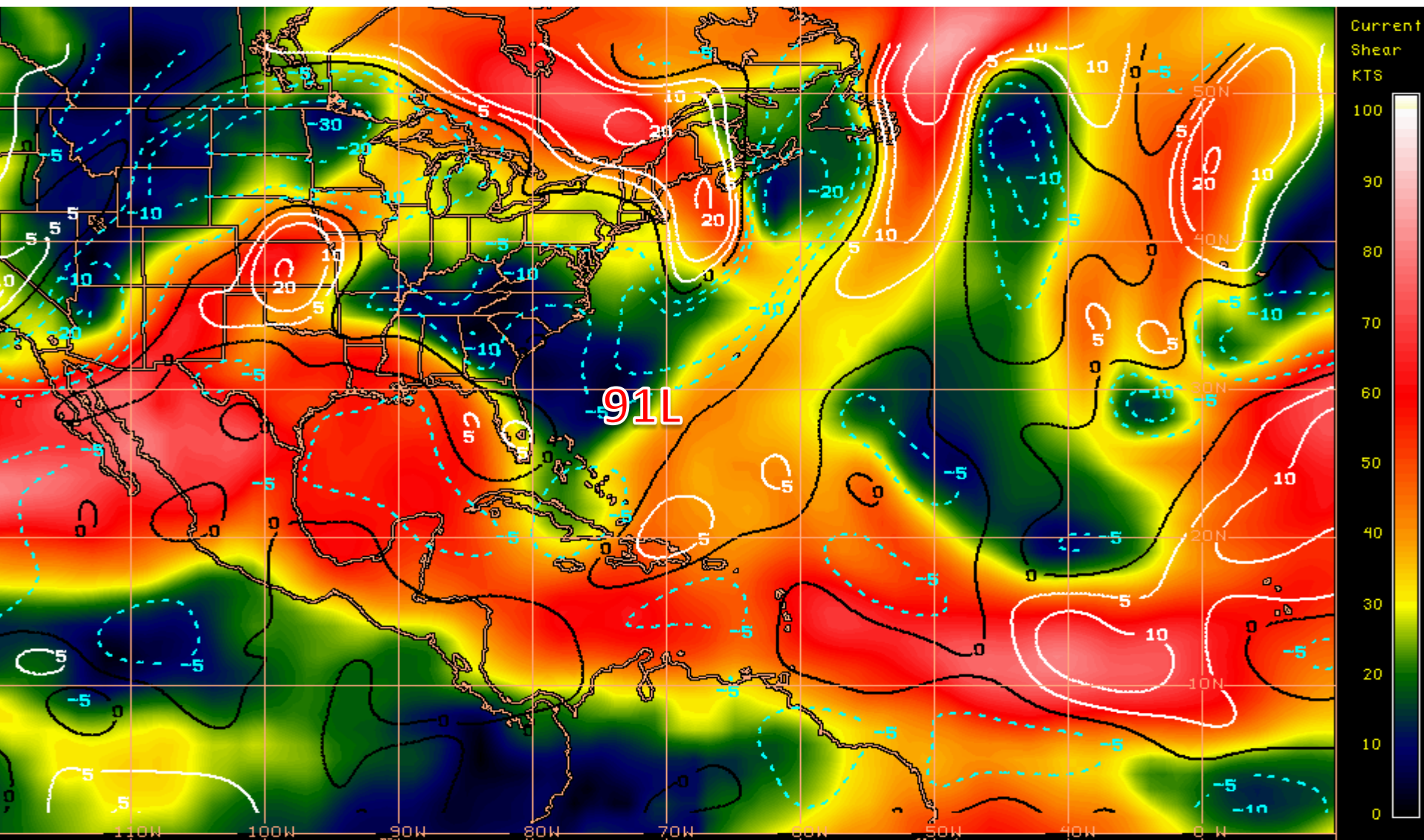
Monday Night



Sea Surface Temperatures Near 91L



Current Wind Shear (shaded) and Shear Tendency (lines)



91L

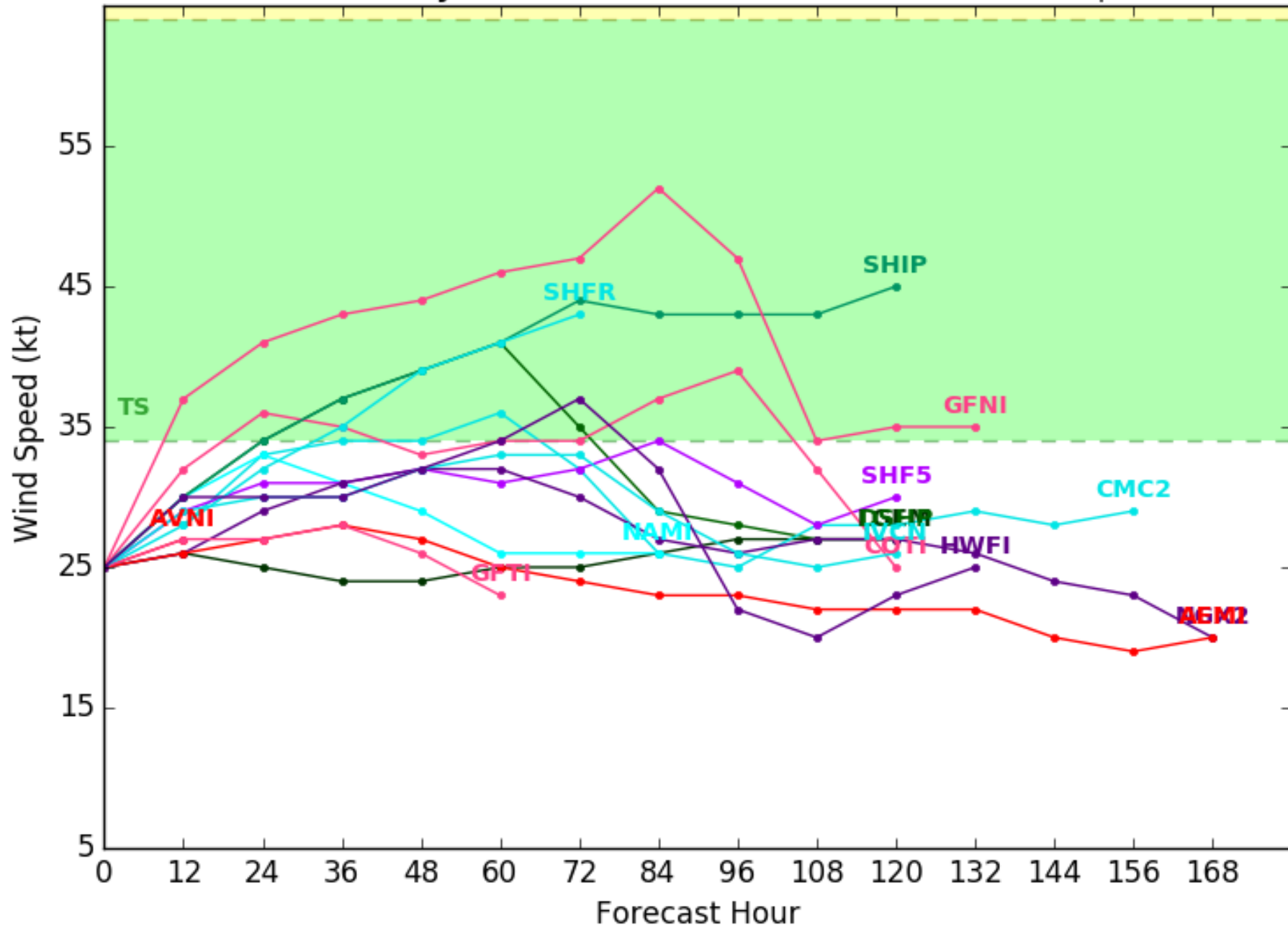
Cin

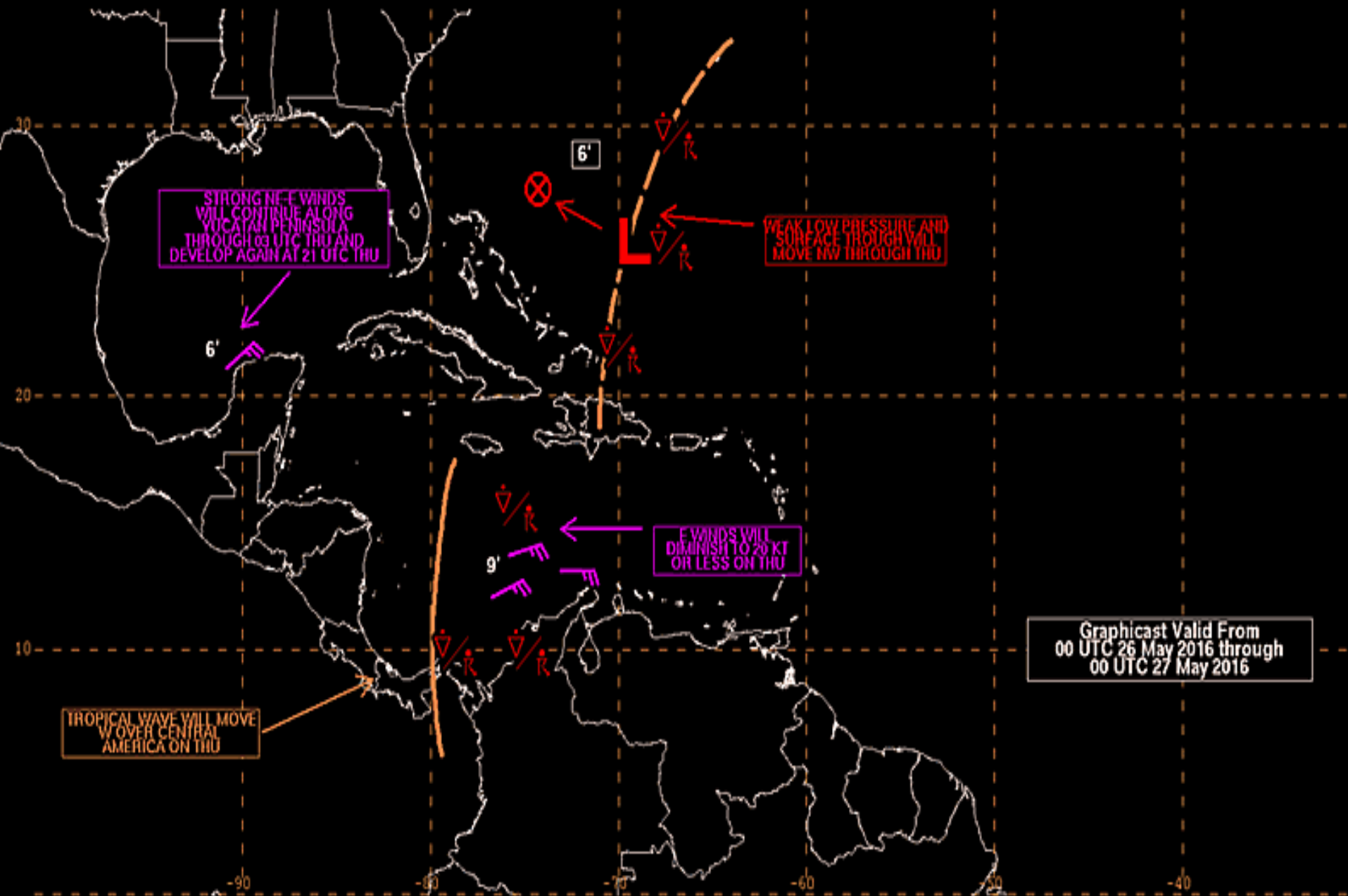


Shear Tendency (KTS) Over Past 24 Hours: Increasing — Decreasing ----

Initialized at 00z May 26 2016

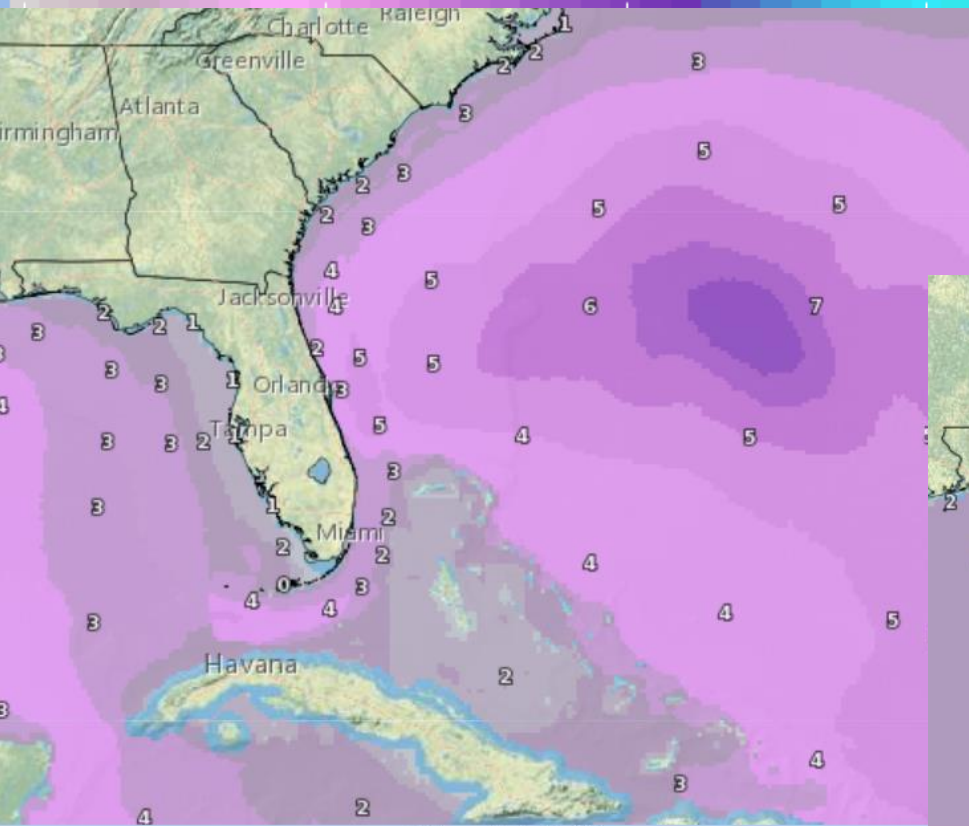
Levi Cowan - tropicaltidbits.com



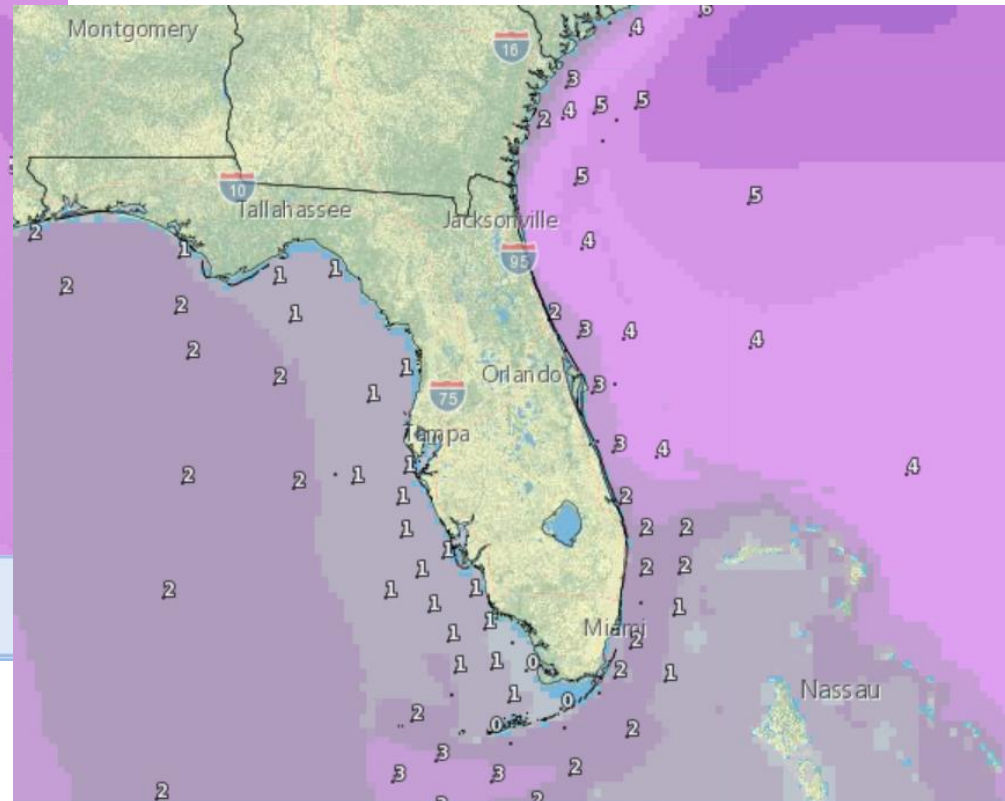


Graphicast Valid From
00 UTC 26 May 2016 through
00 UTC 27 May 2016

Forecast Wave Heights (feet) – Friday & Saturday

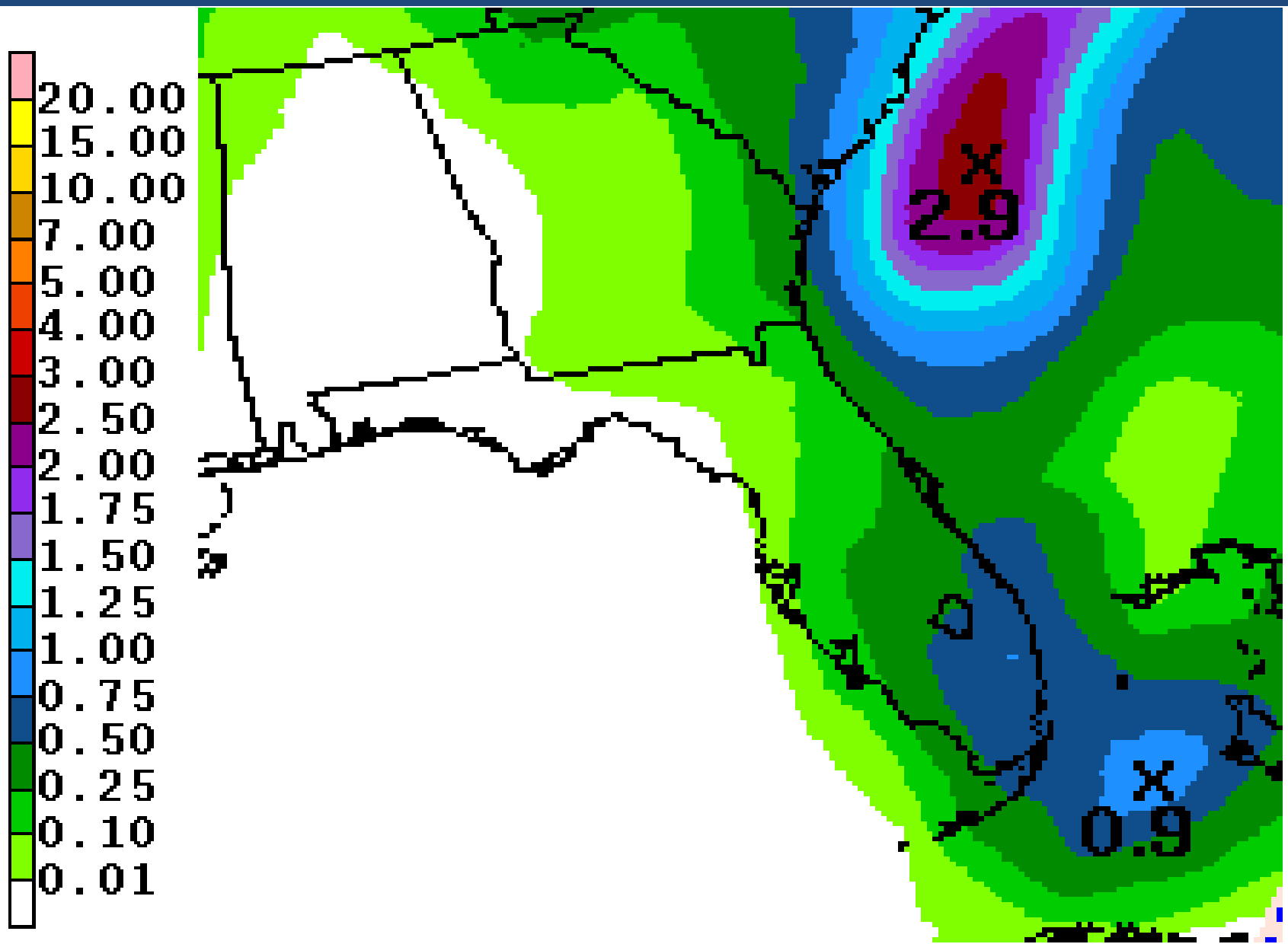


Wave Height (ft)
Valid at: Fri, May 27 2016, 2 PM EDT
Issued: May 26 at 6 AM EDT



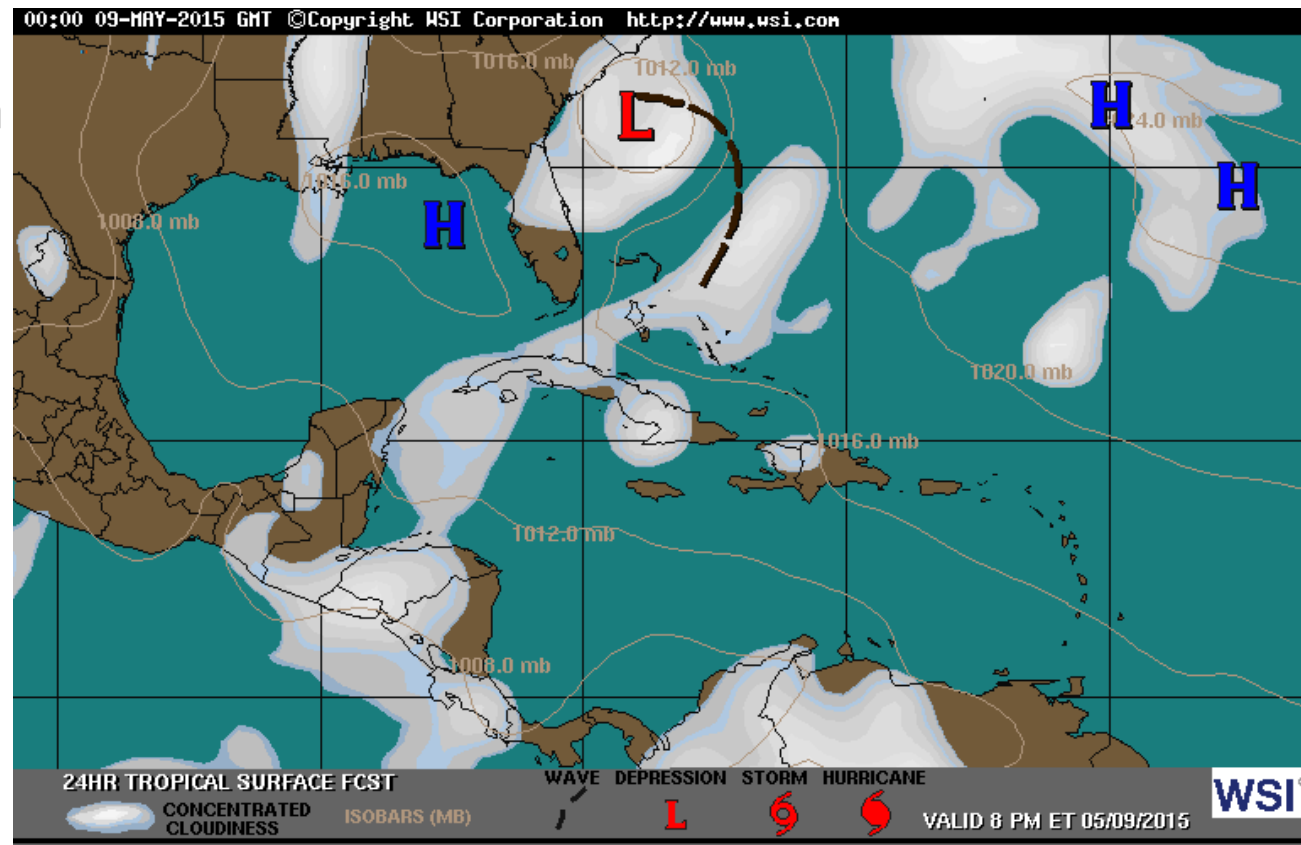
Wave Height (ft)
Valid at: Sat, May 28 2016, 5 PM EDT
Issued: May 26 at 6 AM EDT

Forecast Total Rainfall Accumulations for next 5 Days



What is a Sub-Tropical Storm?

- Has both tropical and winter-weather low pressure attributes
- May have a decayed frontal boundary attached
- Usually has a large center of circulation with minimal storm activity near the center
- Highest winds usually away from the center
- Non-symmetric distribution of winds and thunderstorms



Summary

Summary:

- Cloudiness and showers over the western Atlantic Ocean a few hundred miles northeast of the Bahamas are associated with a newly formed area of low pressure.
- Environmental conditions are expected to gradually become more conducive for development, and a tropical or subtropical cyclone could form on Friday or Saturday.
- As a result, the National Hurricane Center is forecasting a 50% (medium) chance for development within the next 48 hours and a 70% (high) chance of becoming a tropical cyclone within the next 5 days.
- The low is forecast to move slowly west-northwestward or northwestward and approach the southeastern United States over the weekend.
- Computer models are in a fair amount of agreement, suggesting a movement towards the Carolinas through.
- There is still some disagreement on the future intensity of this system, which is common with newly developing systems. A weaker system may have a greater chance of moving closer to Florida, while a stronger system may move more northwest.
- Hurricane Hunter reconnaissance aircraft is scheduled to investigate the system on Friday.
- If the system develops, the next name on the 2016 storm name list is Bonnie.

Florida Outlook:

- It is too early to determine if this will directly impact Florida.
- However, increased wave heights are possible along the Northeast and East Central Florida coast beginning Friday and may lead to an increased risk of rip currents through the weekend.

Another briefing packet will be issued Friday morning.

For more information on this system visit the NHC website at www.nhc.noaa.gov



TROPICAL UPDATE

Created by:

Amy Godsey, Chief State Meteorologist

amy.godsey@em.myflorida.com

State Meteorological Support Unit

Florida Division of Emergency
Management