



TROPICAL UPDATE

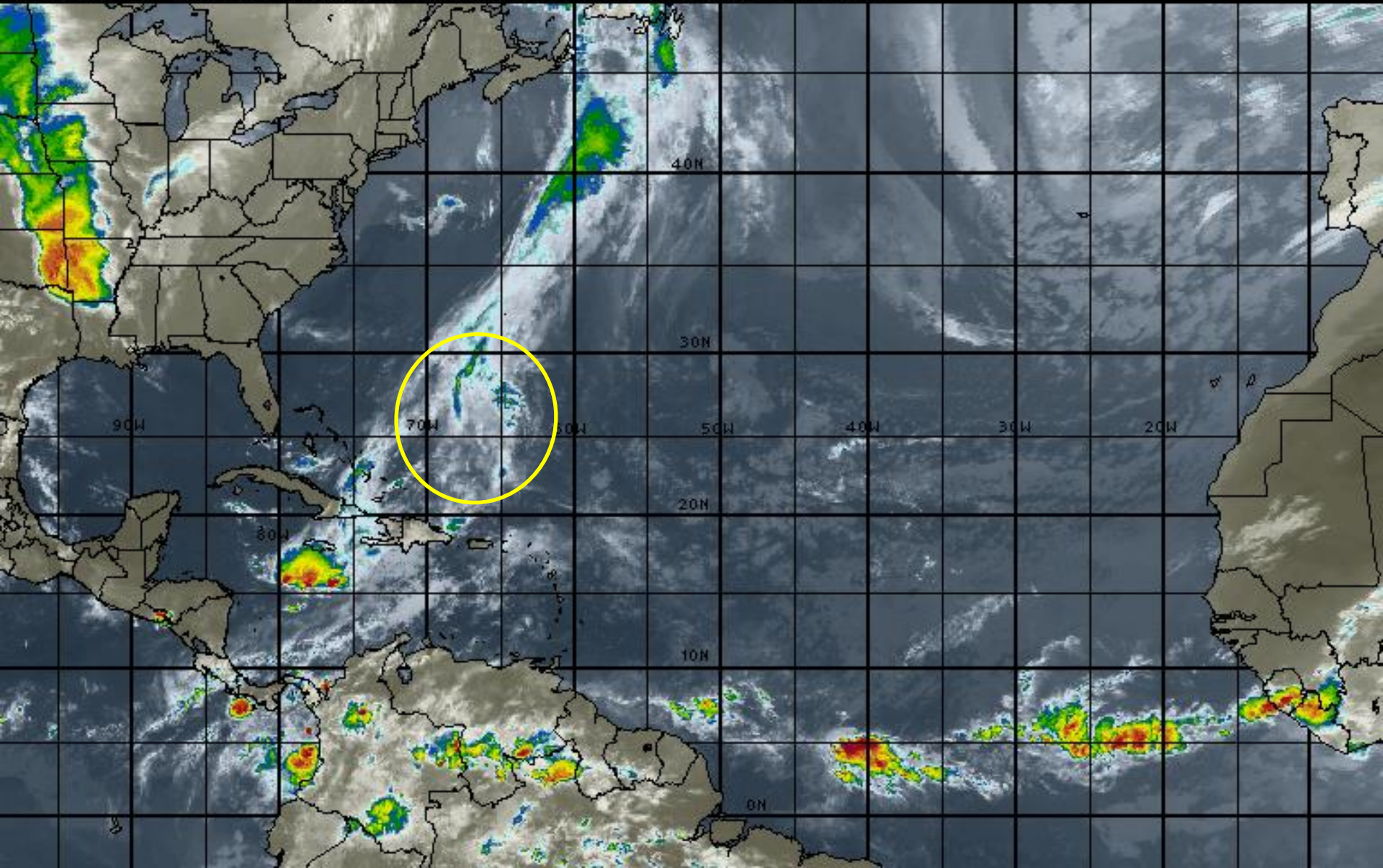
9 AM EDT

Wednesday, May 25, 2015

This update is intended for government and emergency response officials, and is provided for informational and situational awareness purposes only. Forecast conditions are subject to change based on a variety of environmental factors. For additional information, or for any life safety concerns with an active weather event please contact your County Emergency Management or Public Safety Office, local National Weather Service forecast office or visit the National Hurricane Center website at www.nhc.noaa.gov.

Atlantic Basin Satellite Image

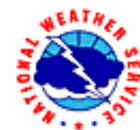
09:00 25-MAY-2016 GMT ©Copyright WSI Corporation <http://www.wsi.com>





Two-Day Graphical Tropical Weather Outlook

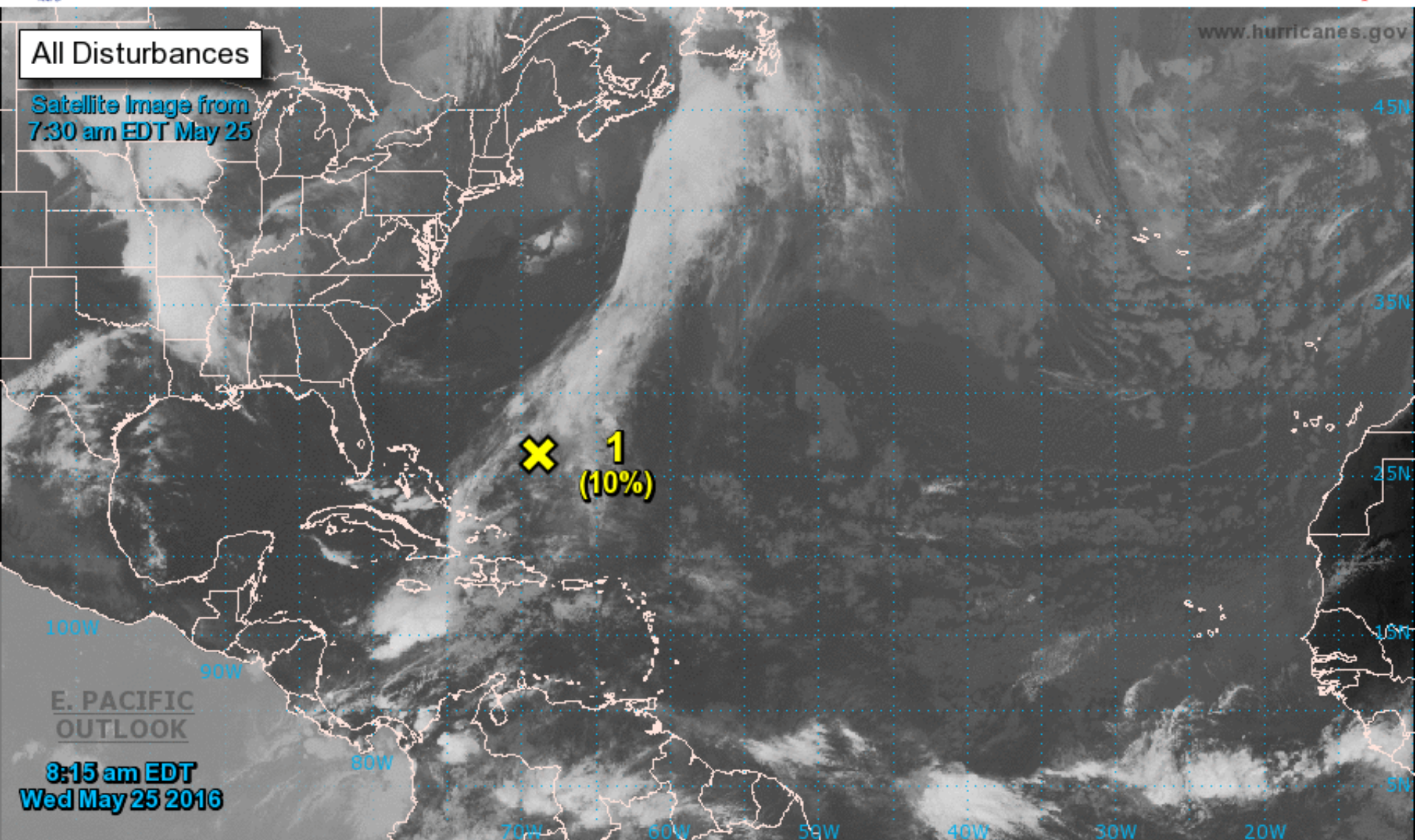
National Hurricane Center Miami, Florida



All Disturbances

Satellite Image from
7:30 am EDT May 25

www.hurricanes.gov



Current Disturbances and Two-Day Cyclone Formation Chance: < 40% 40-60% > 60%

Tropical or Sub-Tropical Cyclone: Depression Storm Hurricane

Post-Tropical Cyclone Remnants



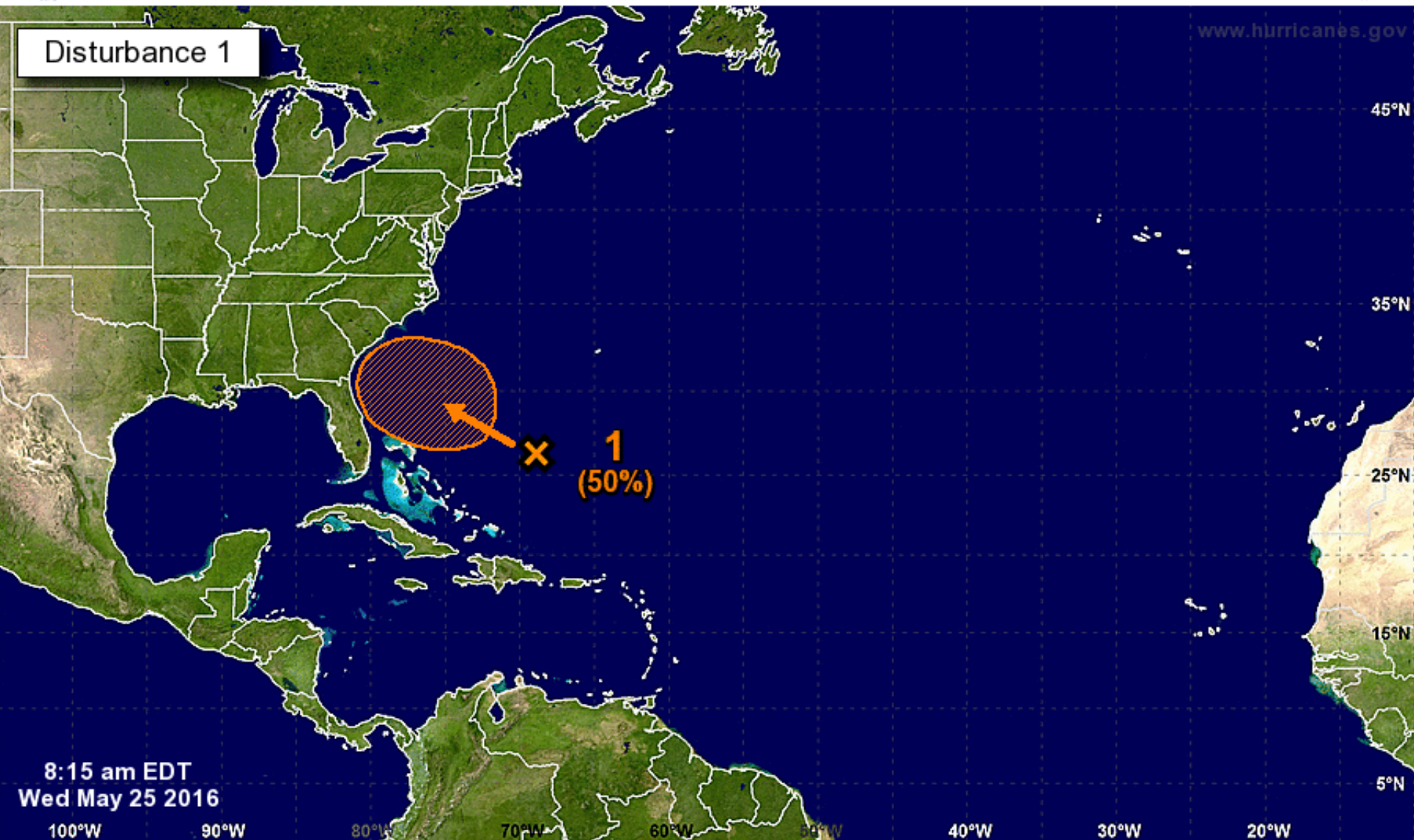
Five-Day Graphical Tropical Weather Outlook

National Hurricane Center Miami, Florida



www.hurricanes.gov

Disturbance 1



8:15 am EDT
Wed May 25 2016

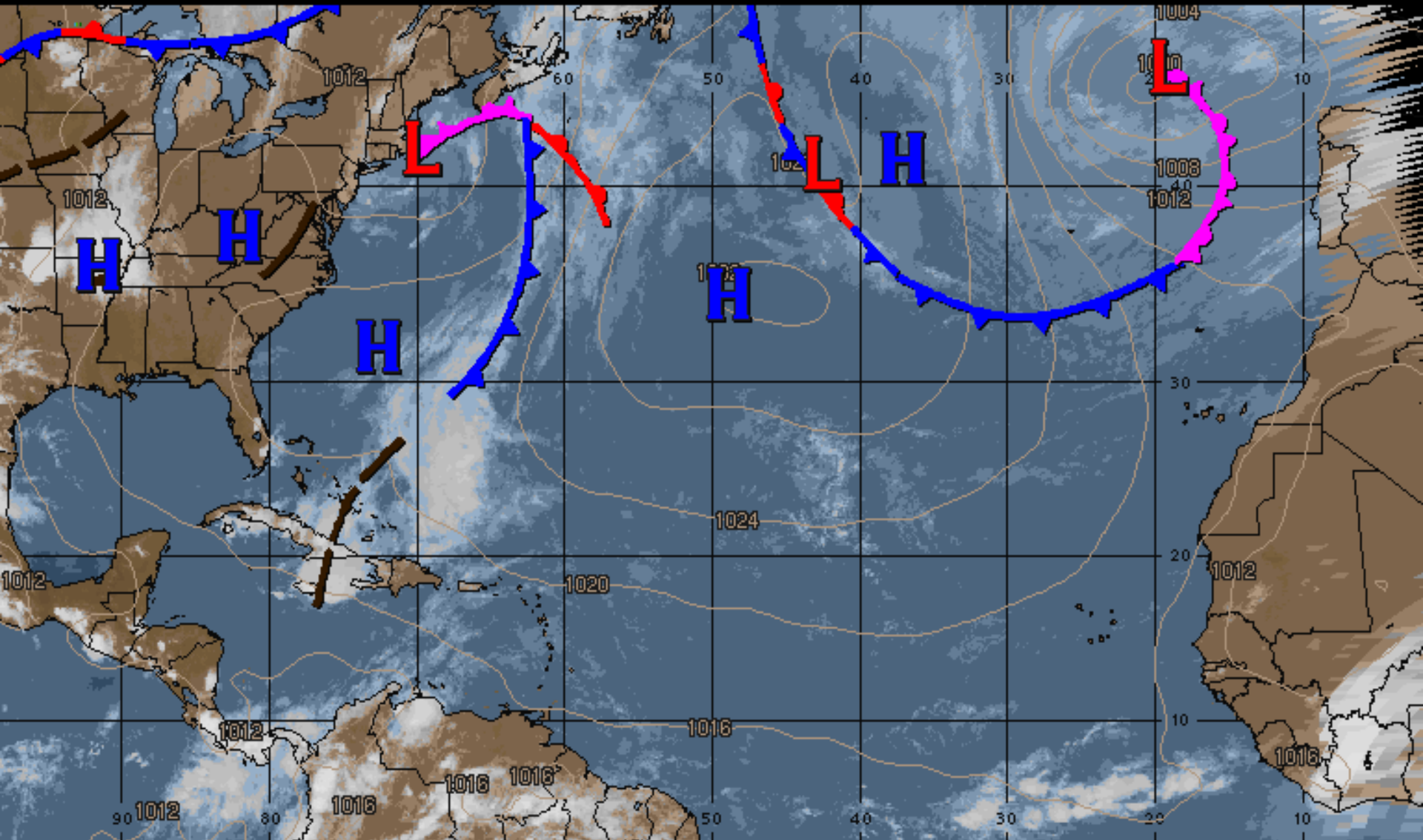
Tropical Cyclone Formation Potential for the Five-Day Period Ending at 8:15 am EDT Mon May 30 2016

Chance of Cyclone Formation in Five Days: ■ Low < 40% ■ Medium 40-60% ■ High > 60%

X indicates current disturbance location; shading indicates potential formation area.

Surface Weather Map

00:00 25-MAY-2016 GMT ©Copyright WSI Corporation <http://www.wsi.com>



TROPICAL SURFACE ANALYSIS

Valid 7 PM ET 24-May-16

WAVE DEPRESSION STORM HURRICANE

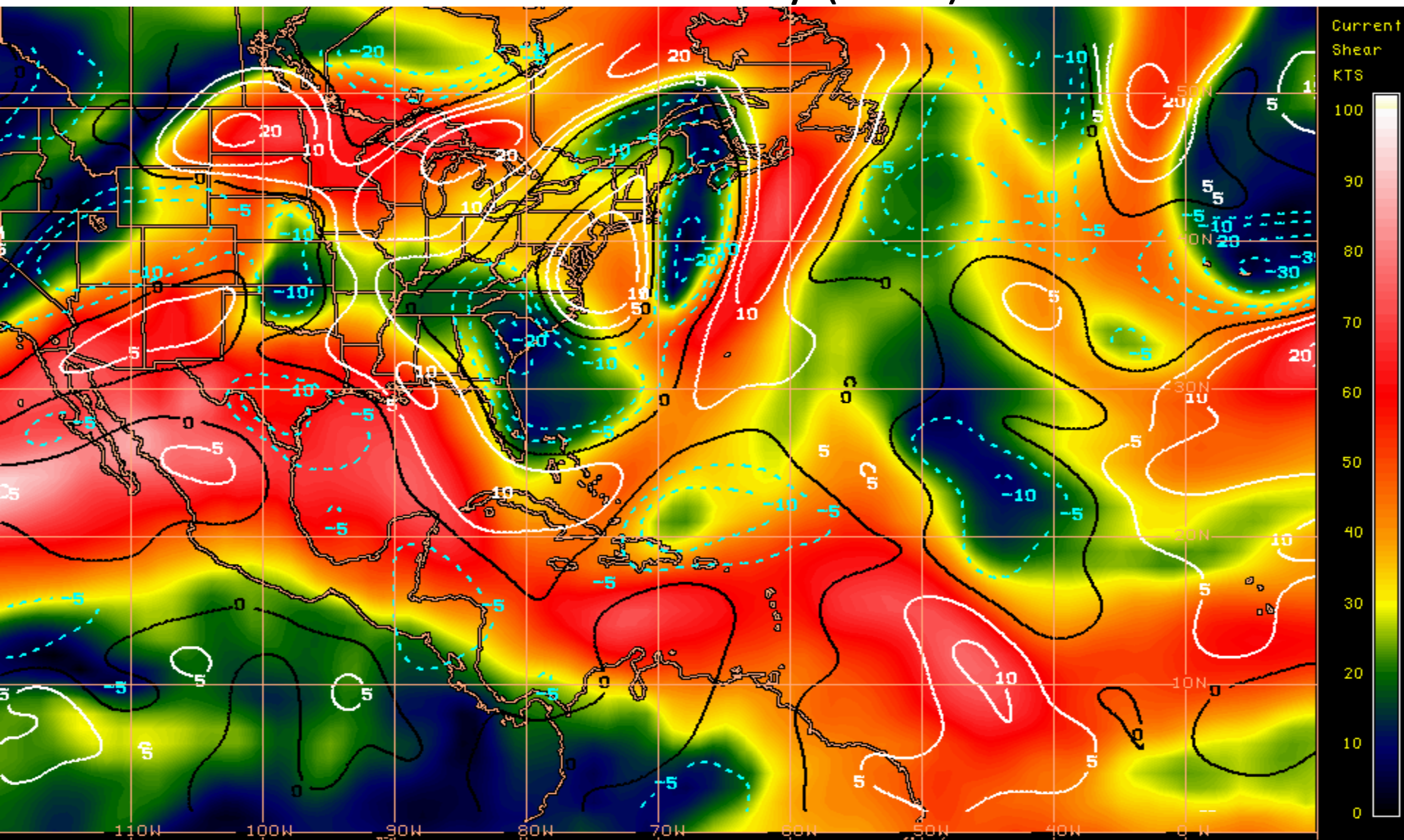
L

6

6

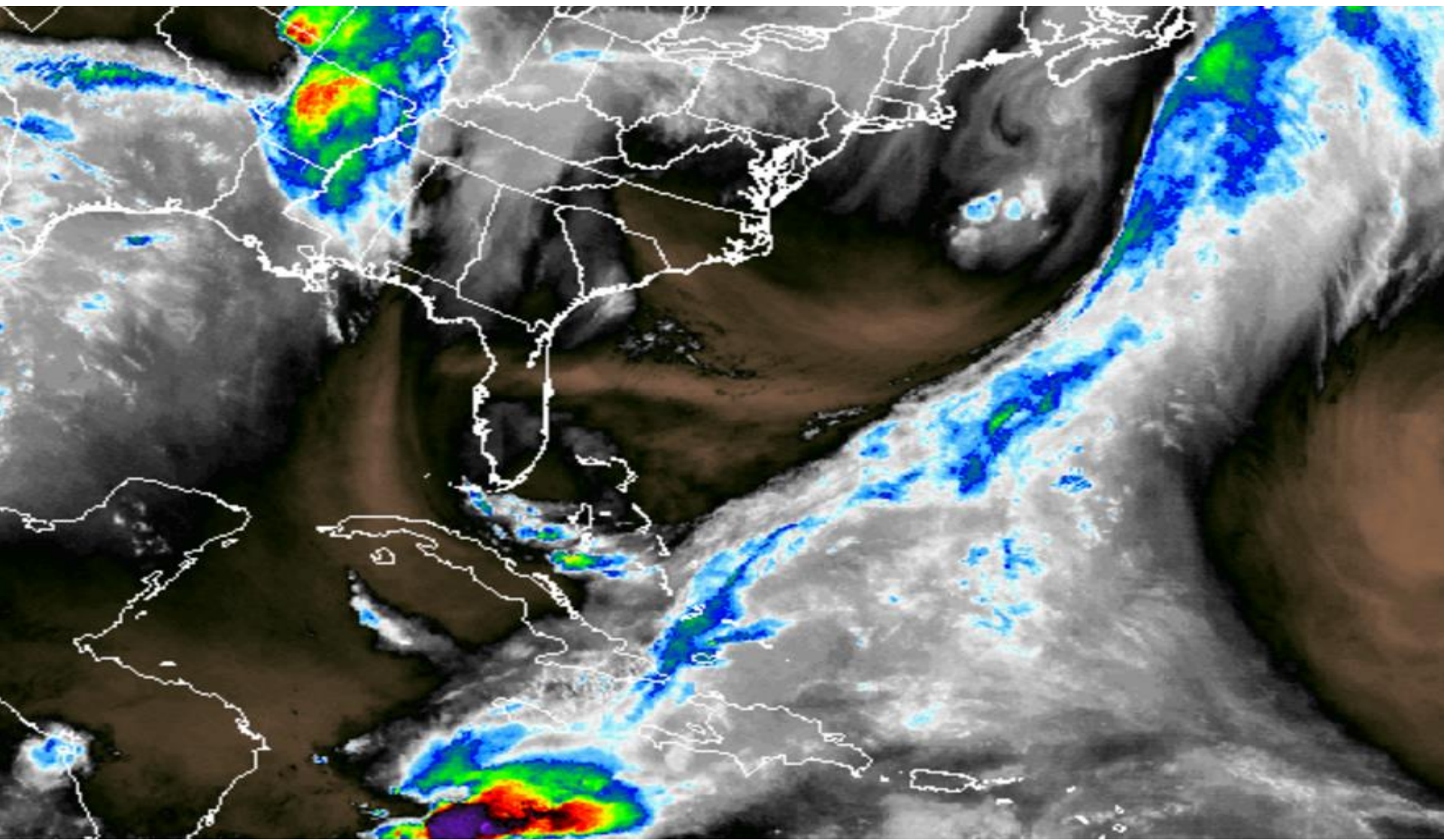
WSI®

Current Wind Shear (shaded) and Shear Tendency (lines)



Shear Tendency (KTS) Over Past 24 Hours: Increasing — Decreasing ----

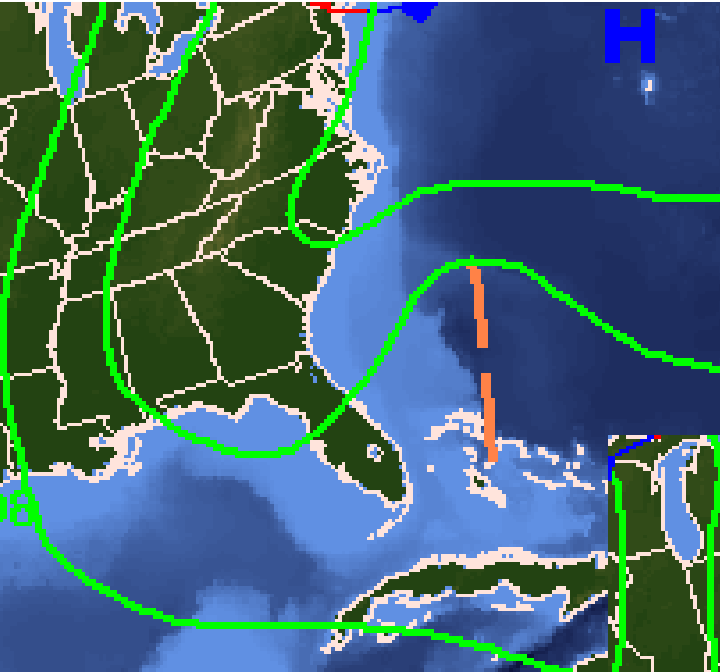
Current Atlantic Water Vapor Image



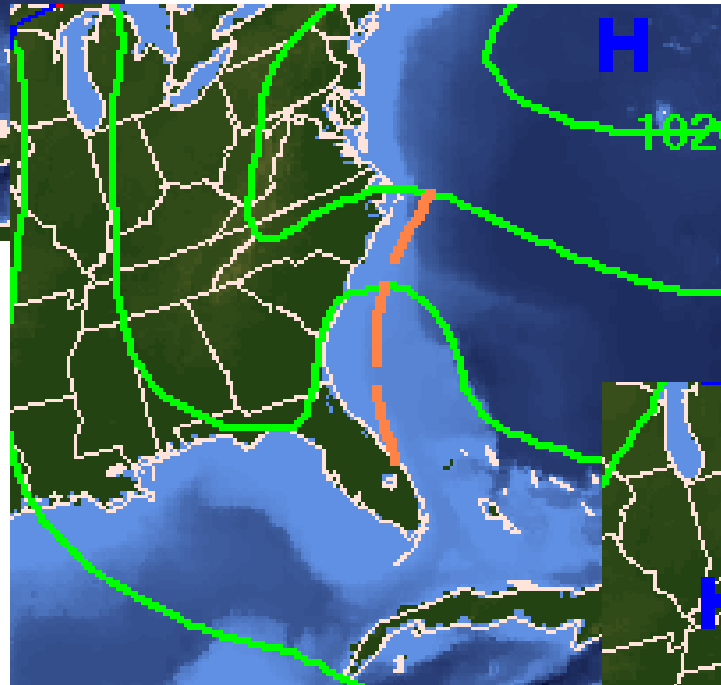
Dry

Saturated

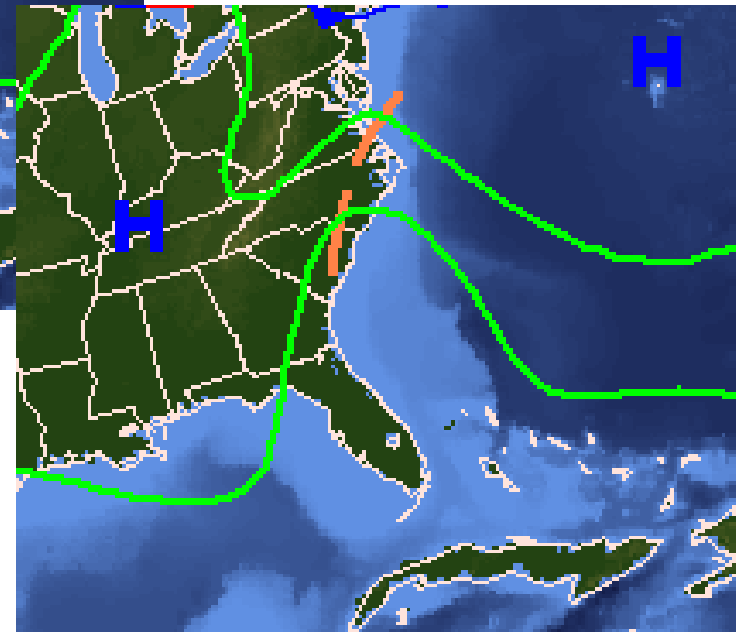
Forecast Weather Map



Friday

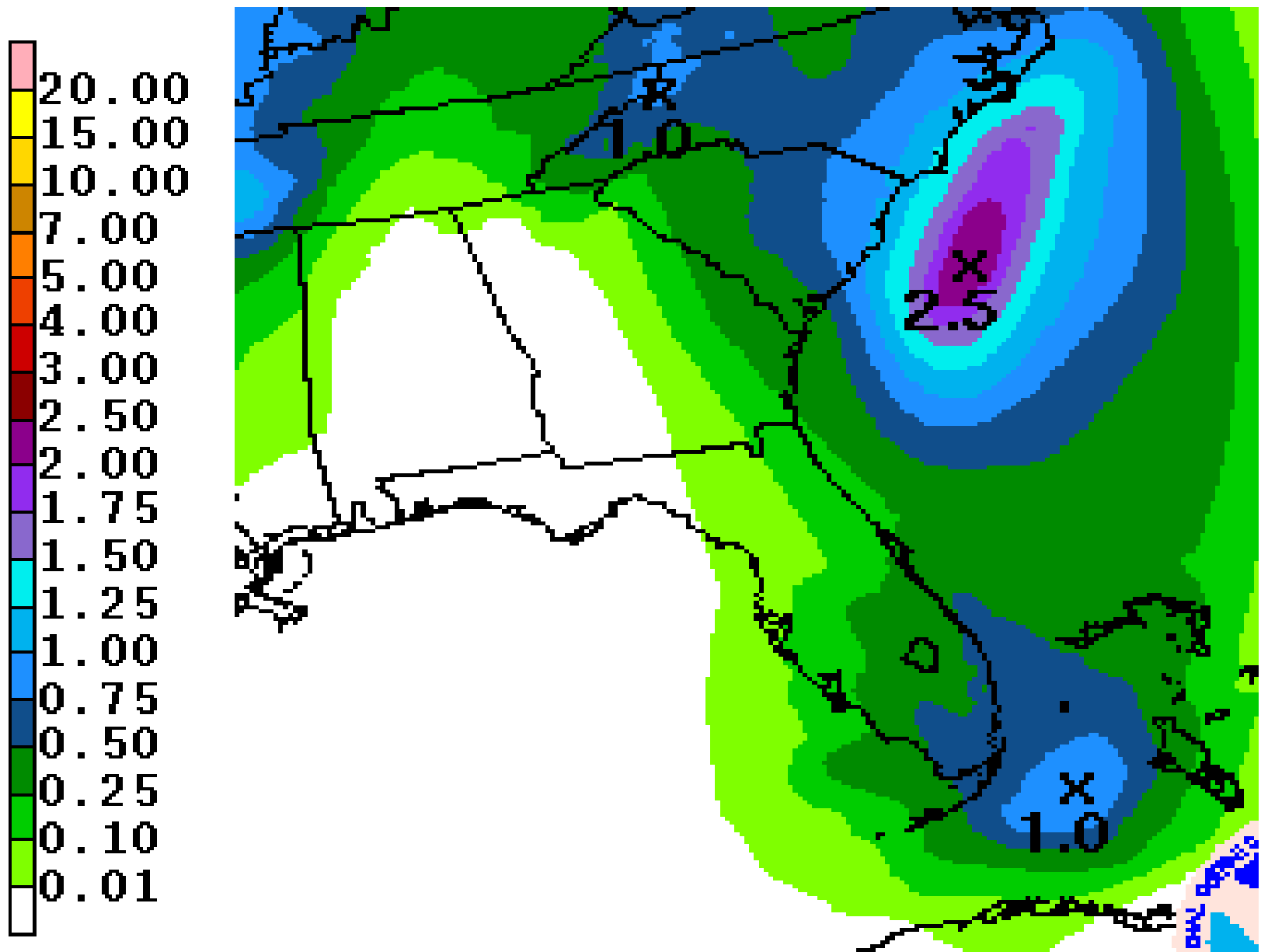


Saturday



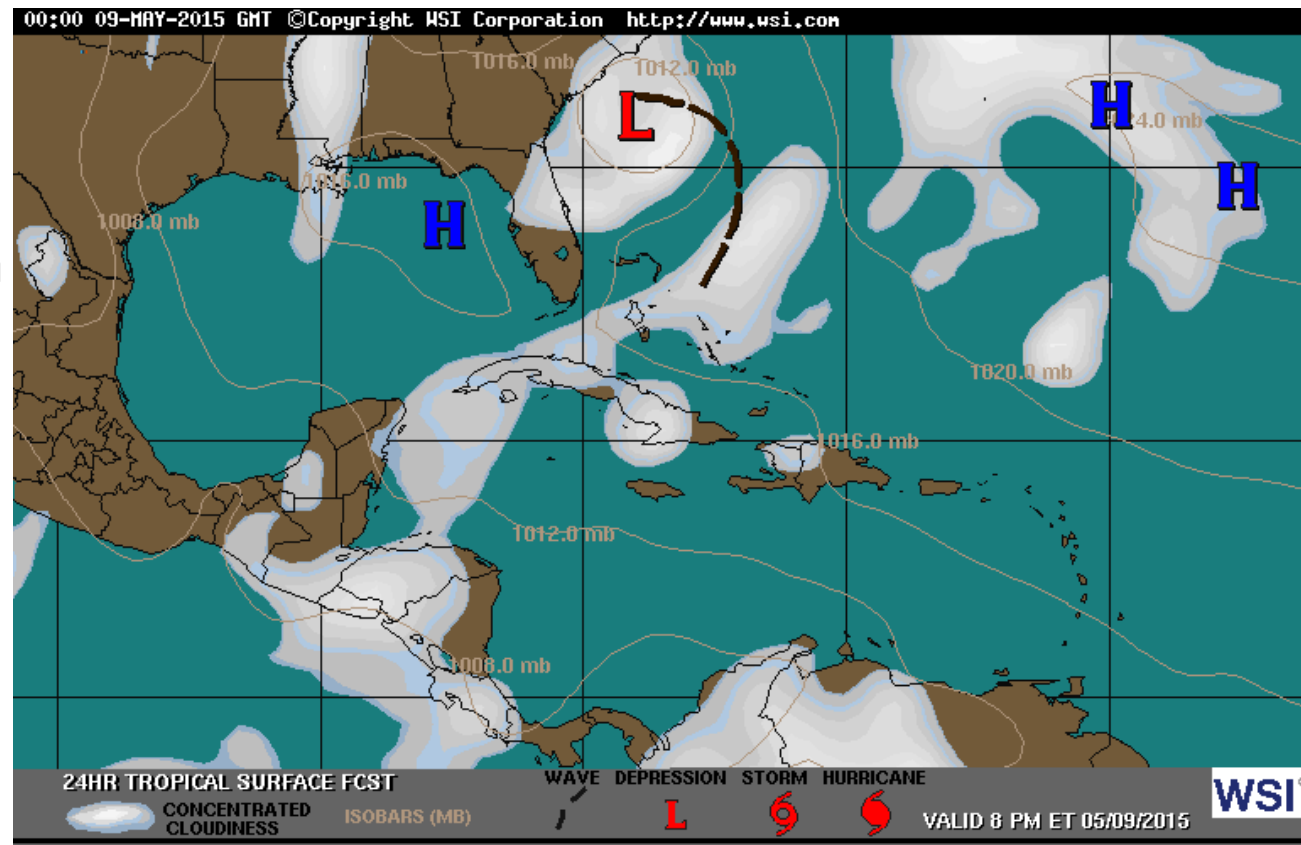
Sunday

Forecast Total Rainfall Accumulations for next 5 Days



What is a Sub-Tropical Storm?

- Has both tropical and winter-weather type low pressure systems.
- May have a decayed frontal boundary attached
- Usually has a large center of circulation with minimal storm activity near the center
- Highest winds usually away from the center
- Non-symmetric distribution of winds and thunderstorms



Summary

Outlook:

- An area of showers and thunderstorms over the western Atlantic Ocean near and northeast of the Bahamas is associated with the interaction of an upper-level trough and a weakening cold front.
- While development is not expected for the next couple of days, environmental conditions could become more conducive for some tropical or subtropical development by Friday.
- As a result, the National Hurricane Center is forecasting a 10% (low) chance for development within the next 48 hours but a 50% (medium) chance of becoming a tropical cyclone within the next 5 days.
- Computer models have not been run on this system yet, but global models indicate a slow northwest track this week, moving towards the Southeastern U.S. Coast between Northeast Florida and South Carolina.
- Global models are also in some disagreement on the future intensity of this system, which is common with newly developing systems. A weaker system may have a greater chance of moving closer to Florida, while a stronger system may move more northwest towards the Carolinas.
- If the system develops, the next name on the 2015 storm name list is Bonnie.

Florida Outlook:

- It is too early to determine if this will directly impact Florida.
- Increased wave heights are possible along the Florida Panhandle coast beginning Thursday and may lead to an increased risk of rip currents through the weekend.
- Another briefing packet will be issued tomorrow morning.
- For more information on this system visit the NHC website at www.nhc.noaa.gov



TROPICAL UPDATE

Created by:

Amy Godsey, Chief State Meteorologist

amy.godsey@em.myflorida.com

State Meteorological Support Unit

Florida Division of Emergency
Management