



TROPICAL UPDATE

8 AM EDT

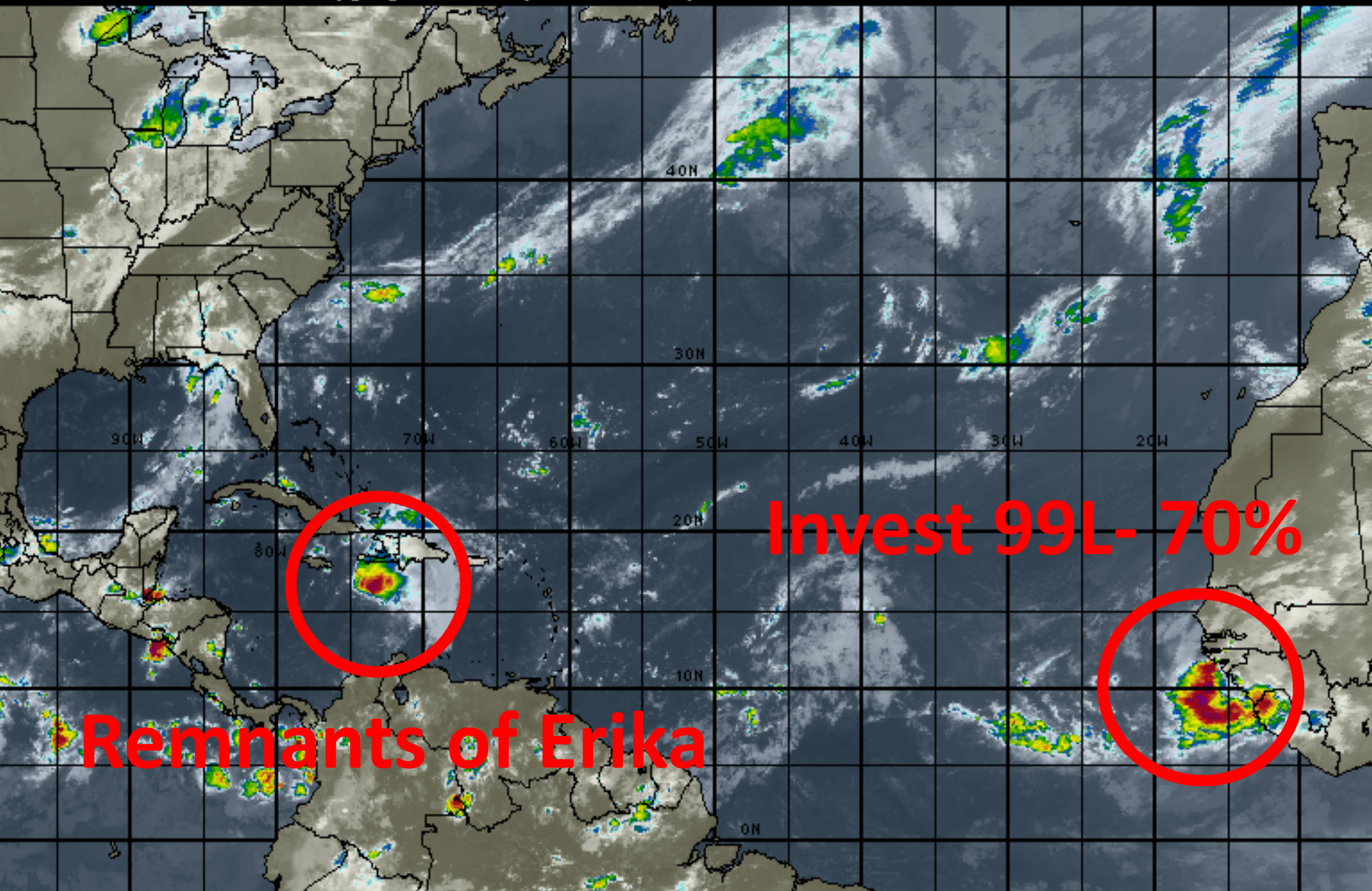
Saturday, August 29, 2015

Remnants of Erika

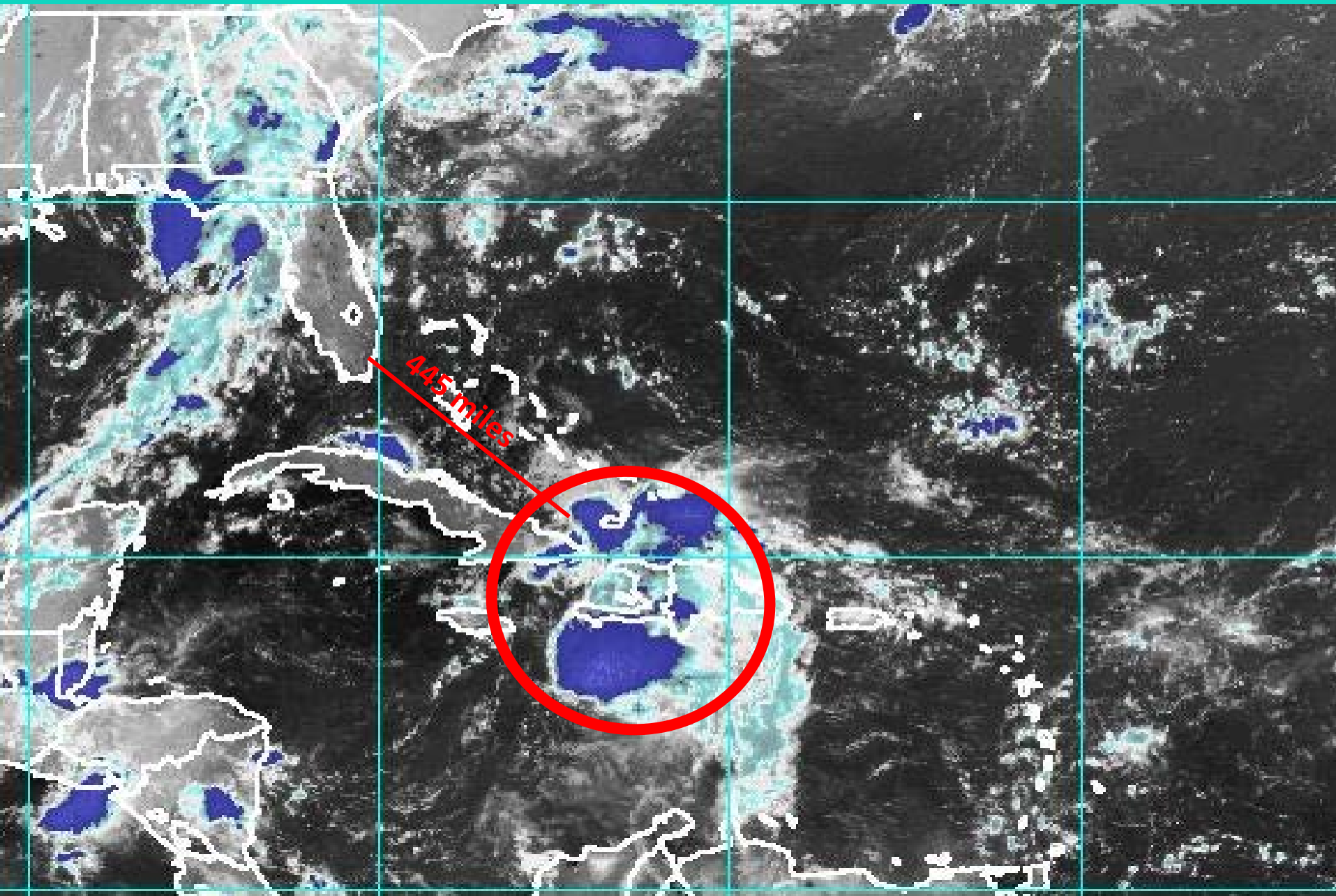
This update is intended for government and emergency response officials, and is provided for informational and situational awareness purposes only. Forecast conditions are subject to change based on a variety of environmental factors. For additional information, or for any life safety concerns with an active weather event please contact your County Emergency Management or Public Safety Office, local National Weather Service forecast office or visit the National Hurricane Center website at www.nhc.noaa.gov.

Atlantic Basin Satellite Image

09:00 29-AUG-2015 GMT ©Copyright WSI Corporation <http://www.wsi.com>



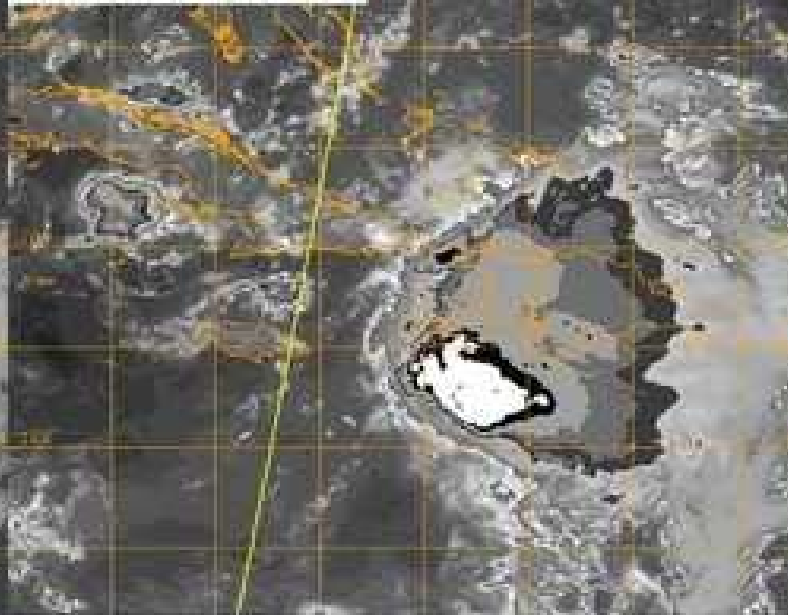
Satellite Image of the Remnants of Erika



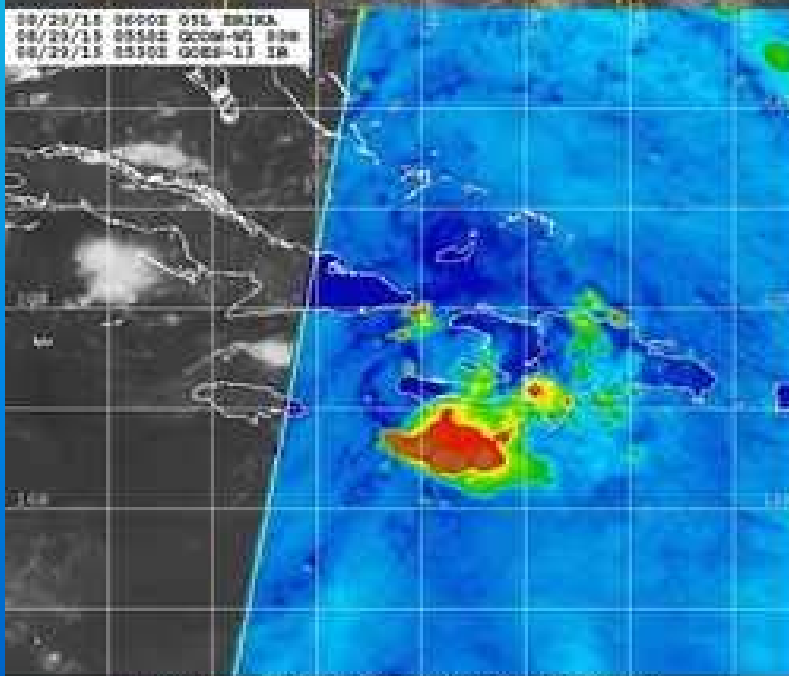
08/29/15 0600Z OSL EMKA
 08/29/15 0558Z GOOM-WO OVERPASS
 08/29/15 0530Z GOES-13 IR



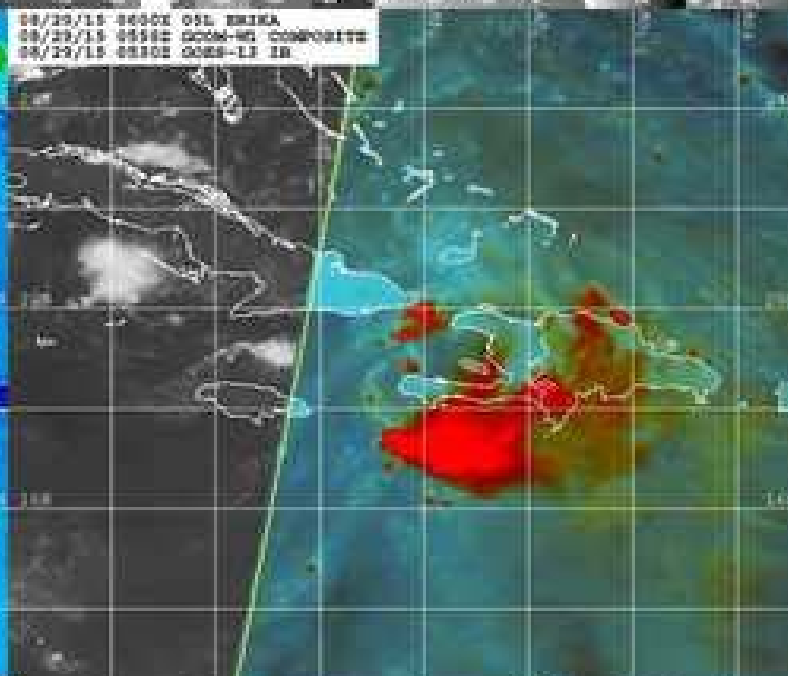
08/29/15 0600Z OSL EMKA
 08/29/15 0558Z GOOM-WO OVERPASS
 08/29/15 0530Z GOES-13 IR-SD



08/29/15 0600Z OSL EMKA
 08/29/15 0558Z GOOM-WO
 08/29/15 0530Z GOES-13 IR



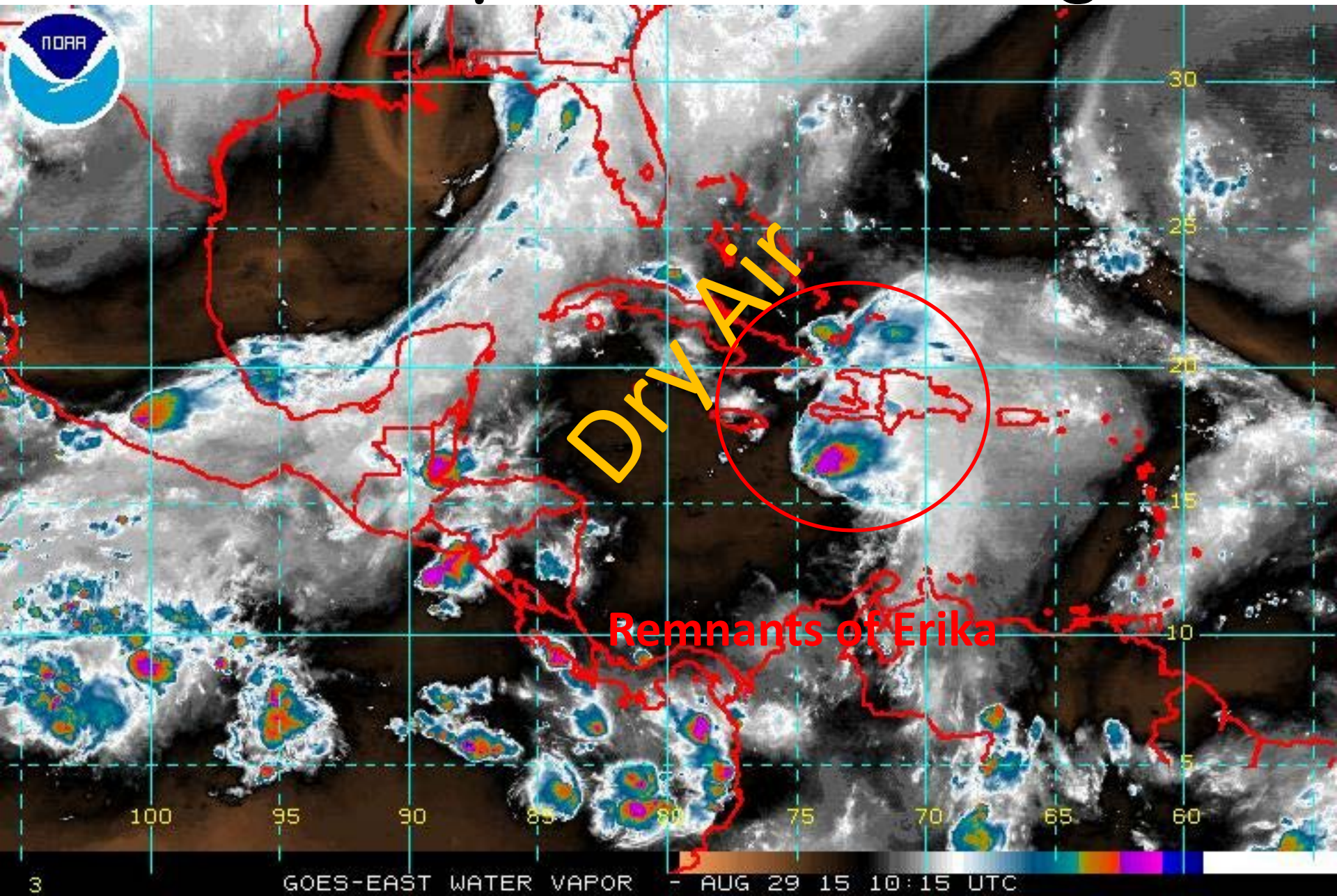
08/29/15 0600Z OSL EMKA
 08/29/15 0558Z GOOM-WO COMPOSITE
 08/29/15 0530Z GOES-13 IR



Naval Research Lab. www.nrlmry.navy.mil/nrl_products.html
 IR Brightness Temp (Kelvin)

Naval Research Lab. www.nrlmry.navy.mil/nrl_products.html
 IR-SDT Brightness Temp (Kelvin)

Water Vapor Satellite Image



5 AM EDT Sat Aug 29, 2015
Position 19.1°N 75.1°W
Maximum Winds 40 mph
Gusts 50 mph
Movement WNW at 19 mph
Minimum Pressure 1 008 mb (29.76 inches)

Satellite 11:03 AM UTC
7:03 AM EDT


Remnants of Erika





Note: The cone contains the probable path of the storm center but does not show the size of the storm. Hazardous conditions can occur outside of the cone.



Remnants of Erika
Saturday August 29, 2015
930 AM EDT Advisory 19
NWS National Hurricane Center

Current Information: 
Center Location 21.5 N 75.9 W
Max Sustained Wind 35 mph
Movement WNW at 22 mph

Forecast Positions:
 Tropical Cyclone  Post-Tropical
Sustained Winds: D < 39 mph
S 39-73 mph H 74-110 mph M > 110mph

Potential Track Area:



Day 1-3

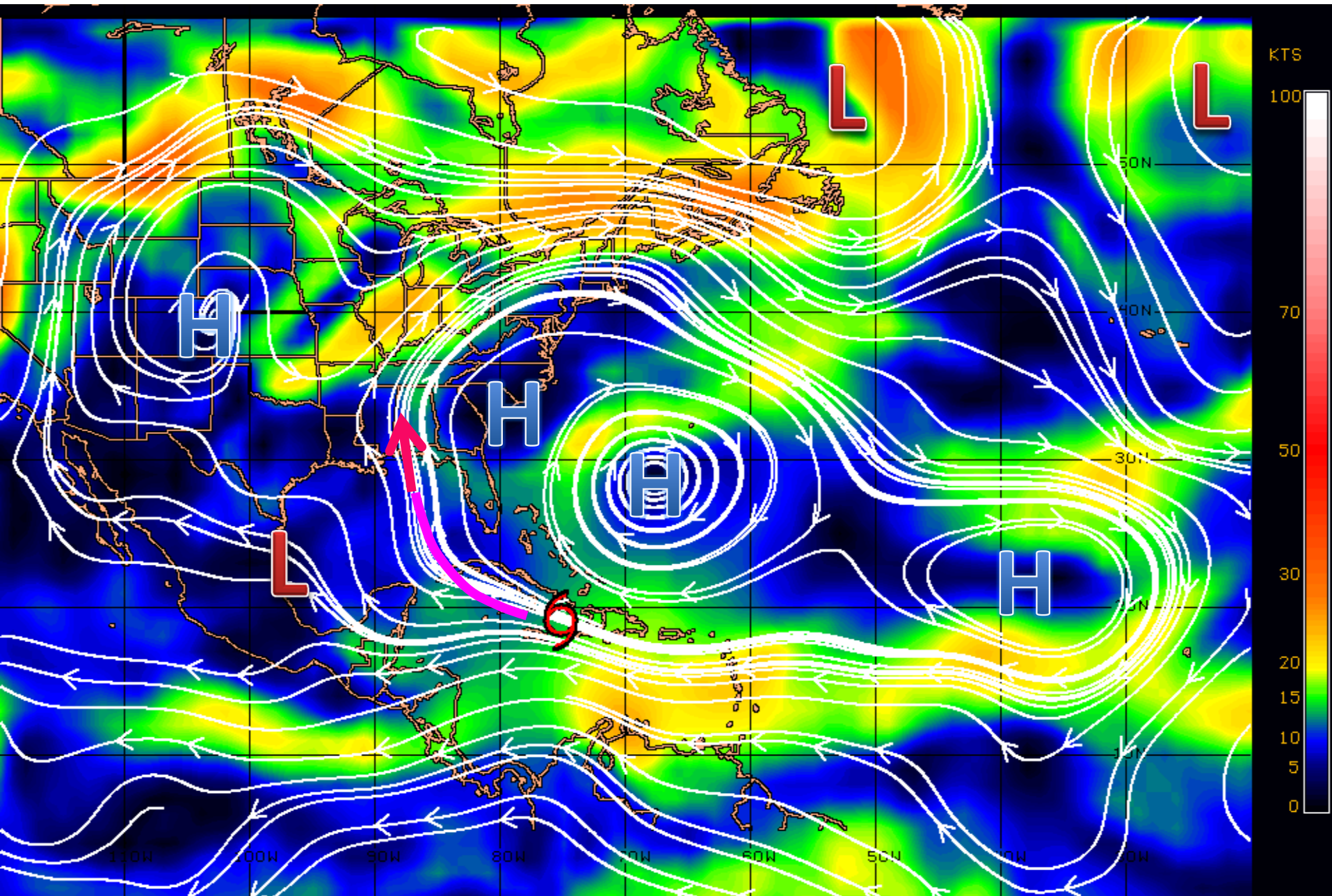
Watches:

 Hurricane  Trop.Storm

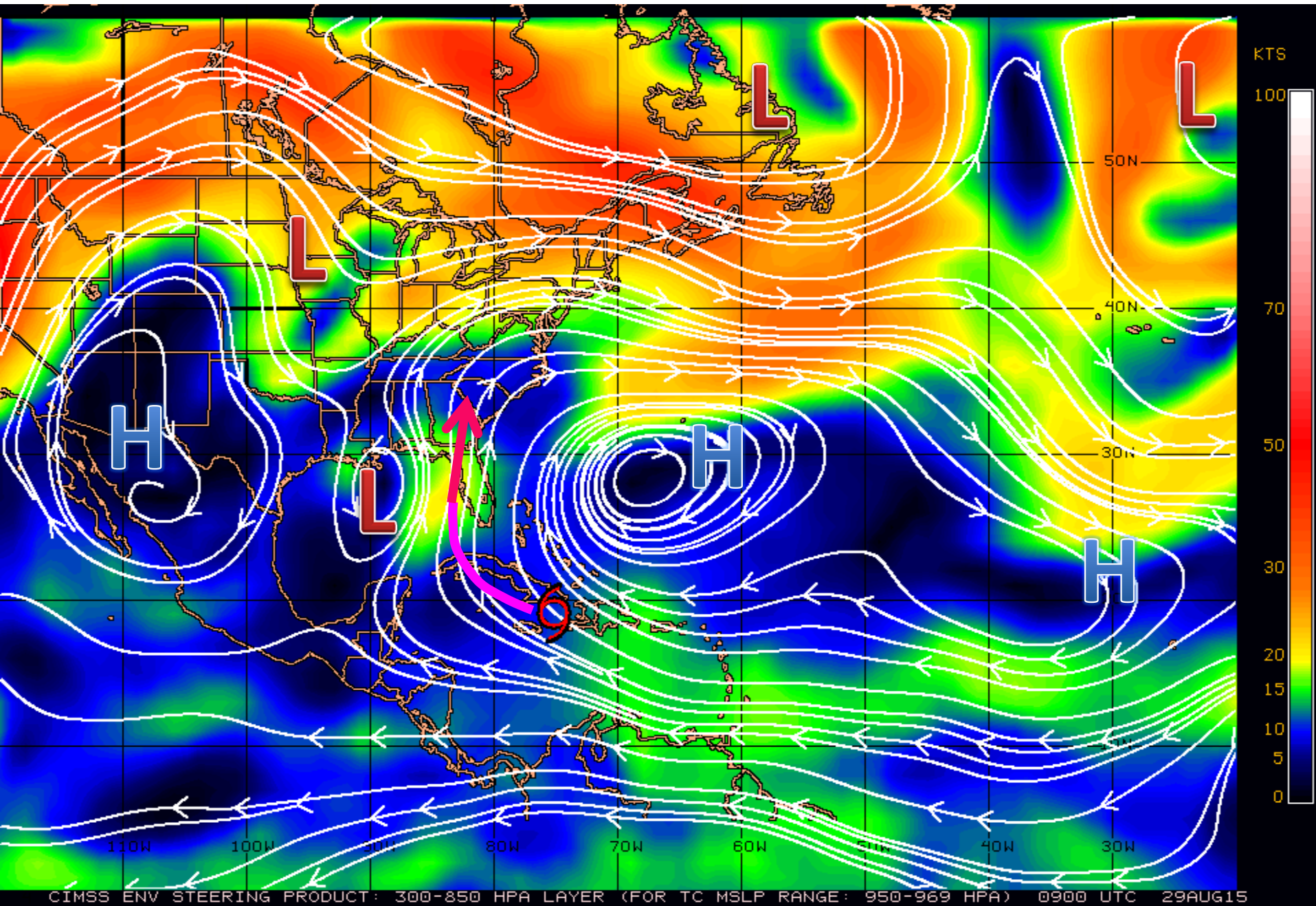
Warnings:

 Hurricane  Trop.Storm

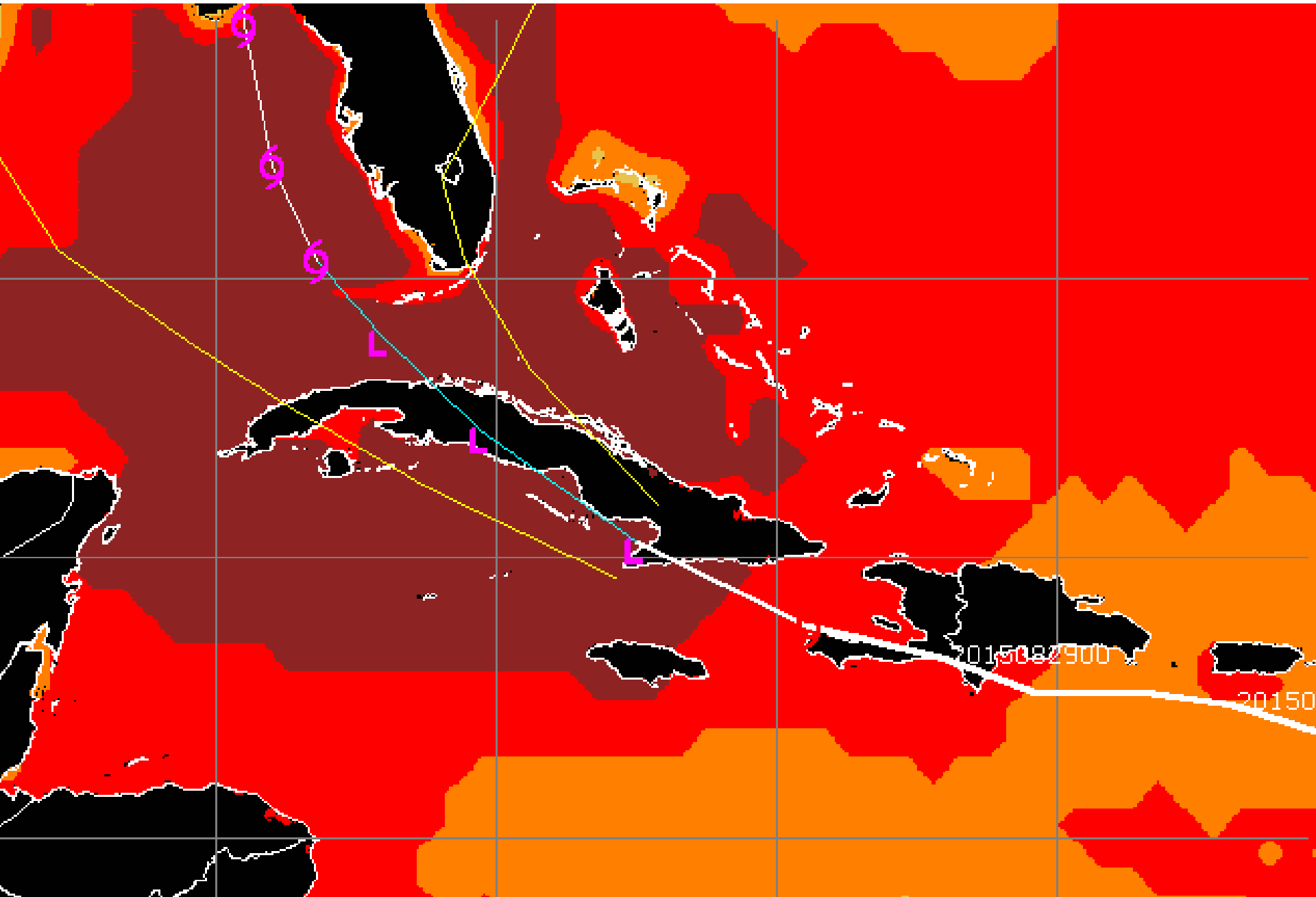
Steering Currents – Low Levels



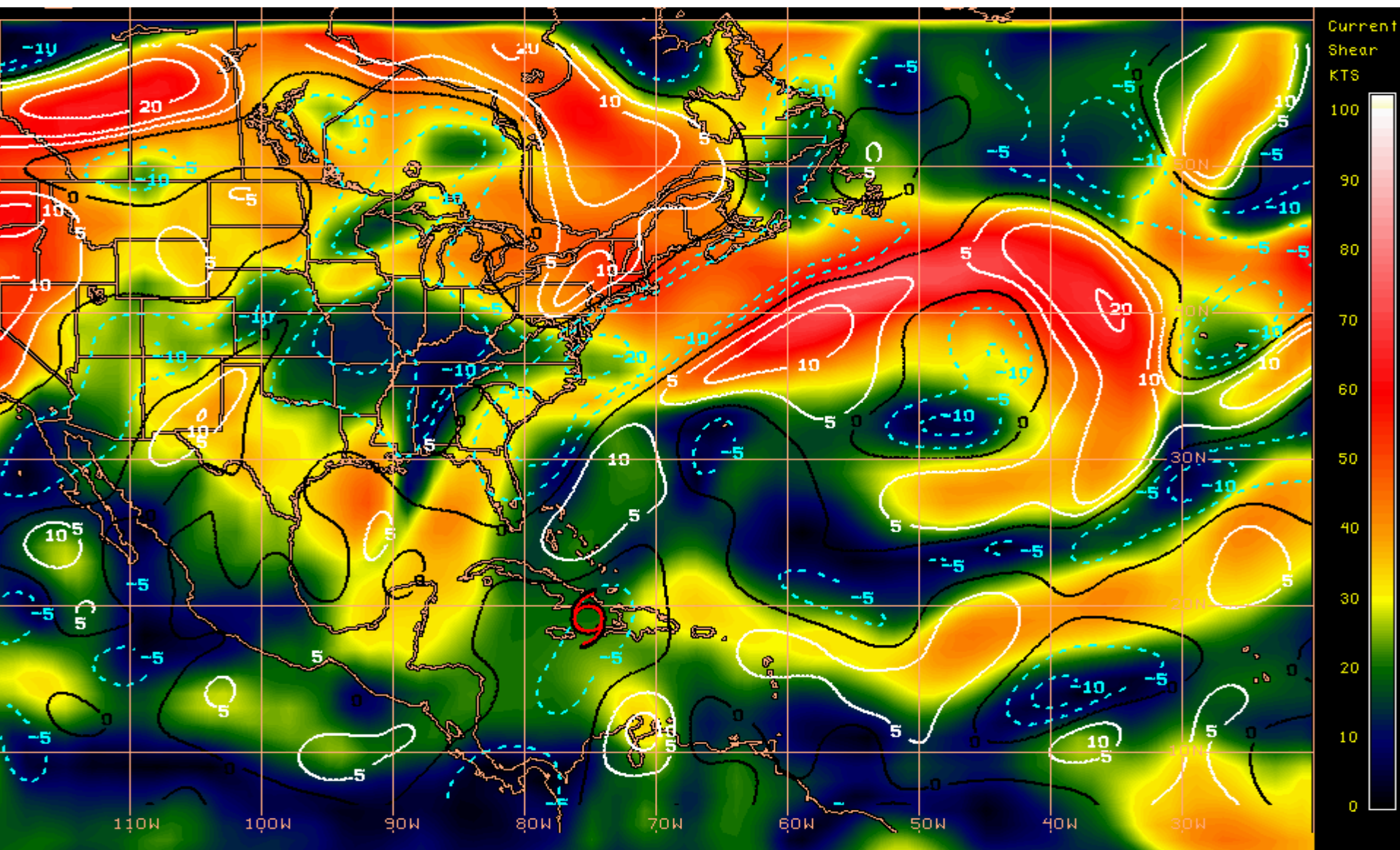
Steering Currents – Upper Levels



Sea Surface Temperatures Near T.S. Erika



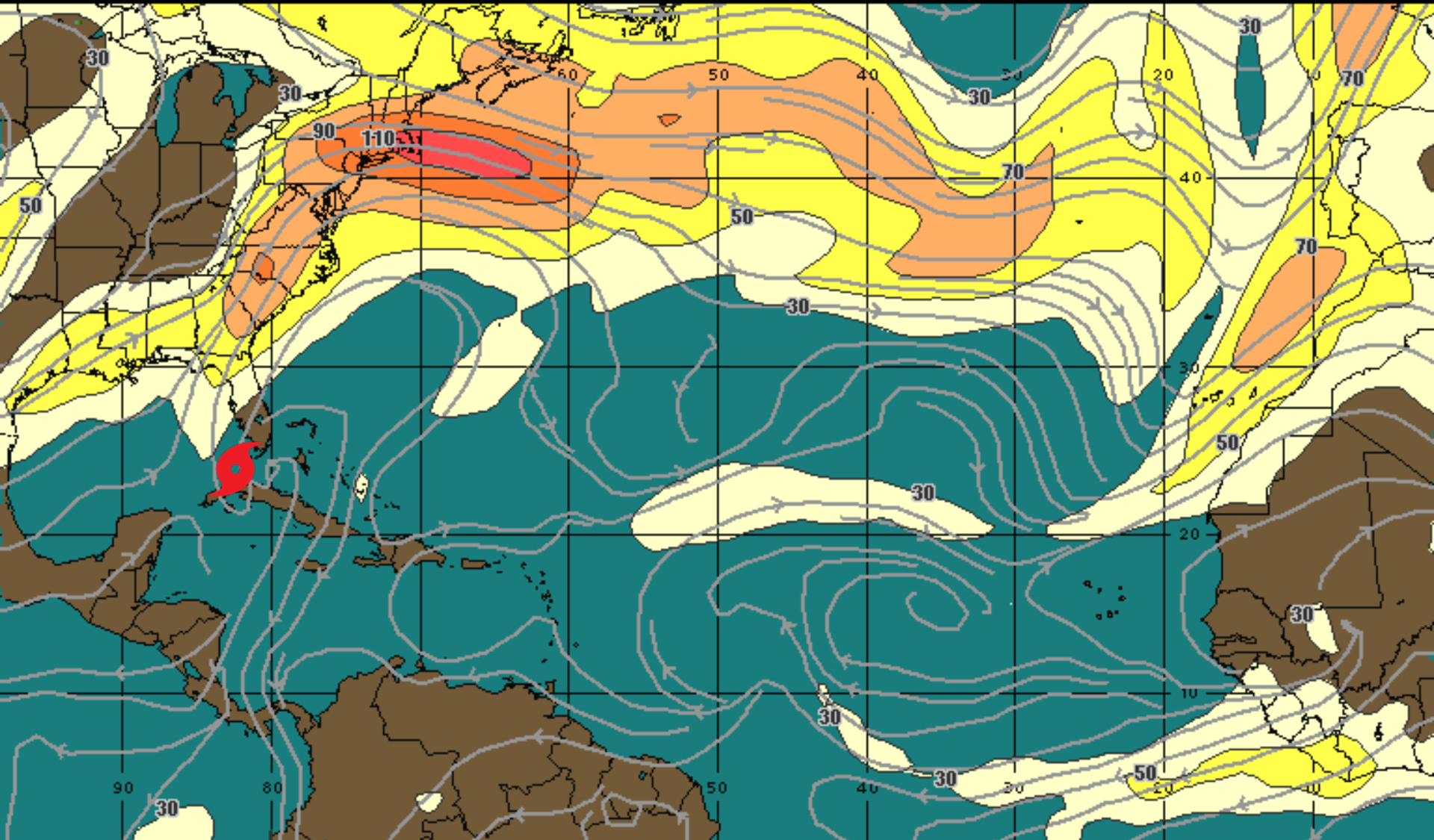
Current Wind Shear (shaded) and Shear Tendency (contours)



Shear Tendency (KTS) Over Past 24 Hours: Increasing ——— Decreasing - - - -

Forecast Wind Shear-Sunday Night

00:00 31-AUG-2015 GMT ©Copyright WSI Corporation <http://www.wsi.com>



200Mb Wind Speed / Streamline Forecast
Valid 0000 UTC Mon 31-Aug-15

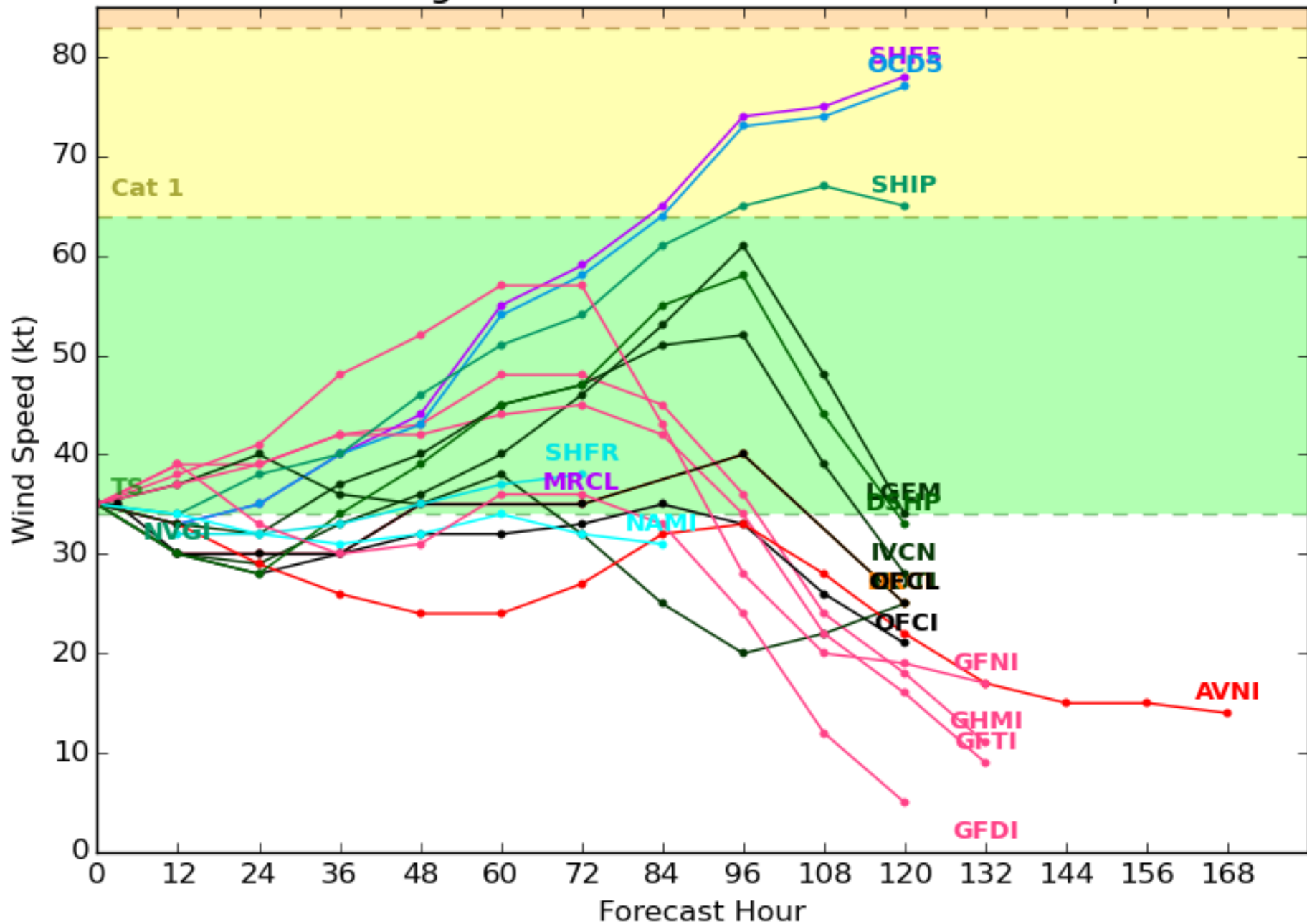
30 mph 50 70 90 110 130 150 +

WSI®

Remnants of **ERIKA Model Intensity Guidance**

Initialized at 06z Aug 29 2015

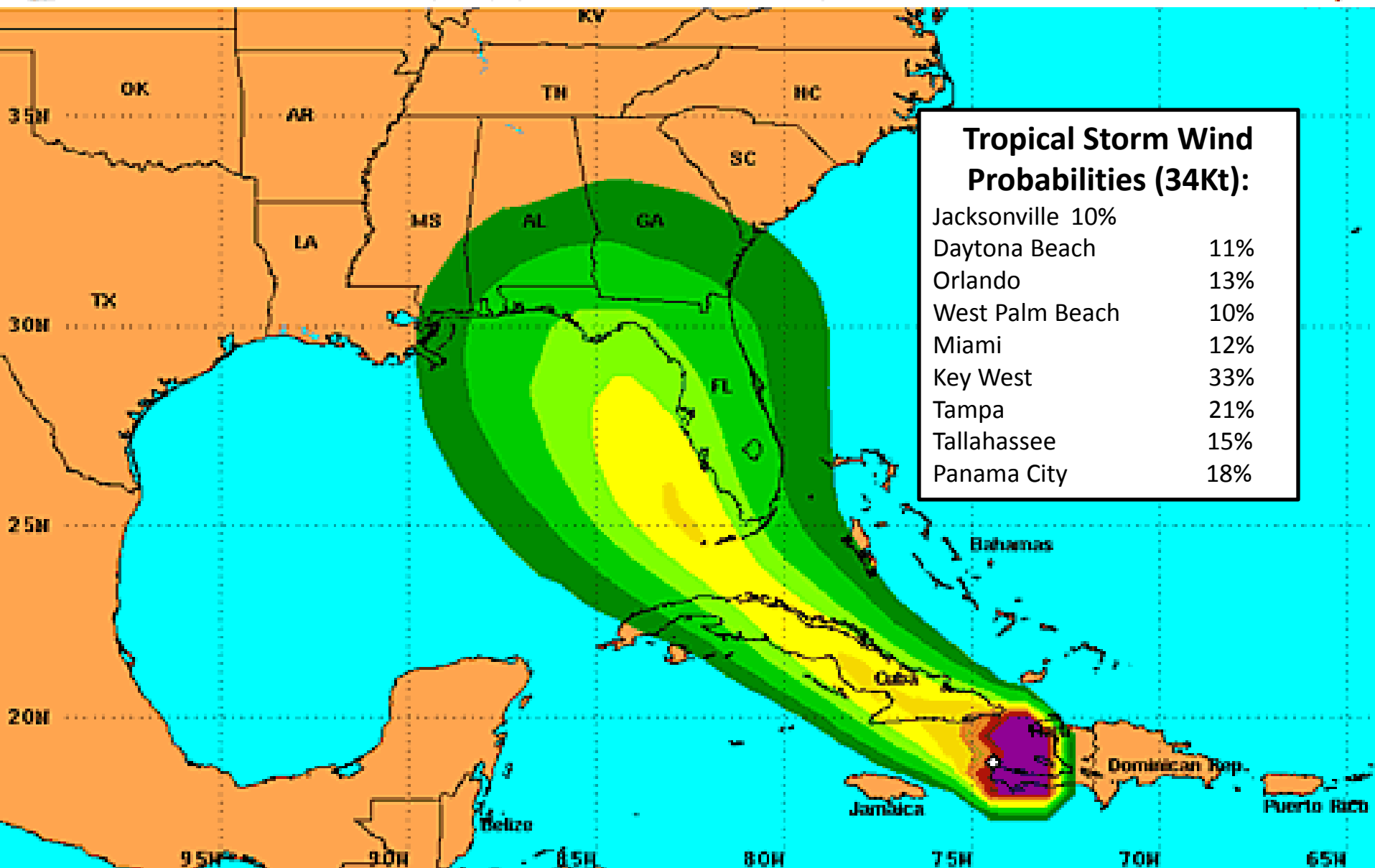
Levi Cowan - tropicaltidbits.com





Tropical Storm Force Wind Speed Probabilities

For the 120 hours (5 days) from 2 AM EDT Sat Aug 29 to 2 AM EDT Thu Sep 3

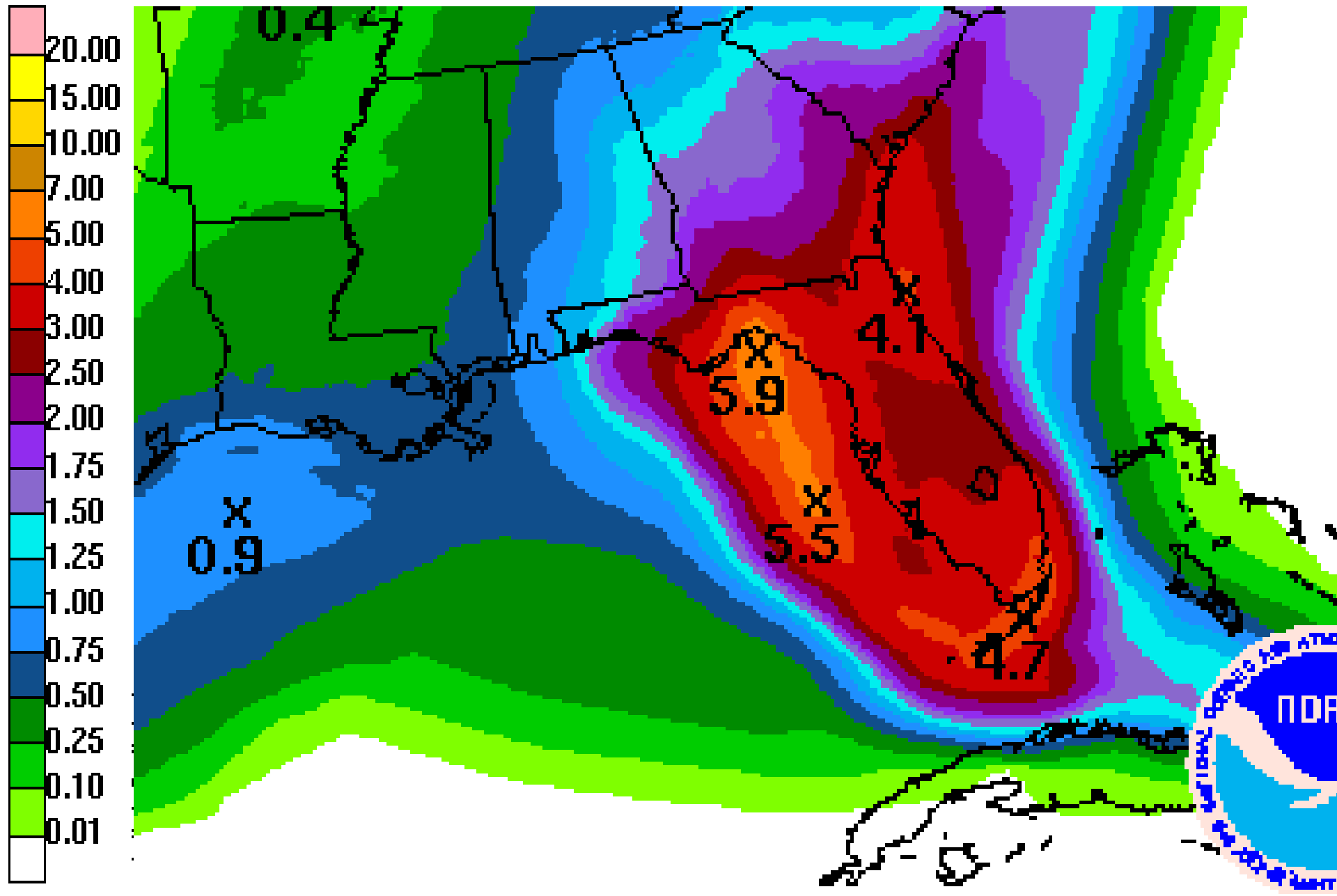


Probability of tropical storm force surface winds (1-minute average ≥ 39 mph) from all tropical cyclones

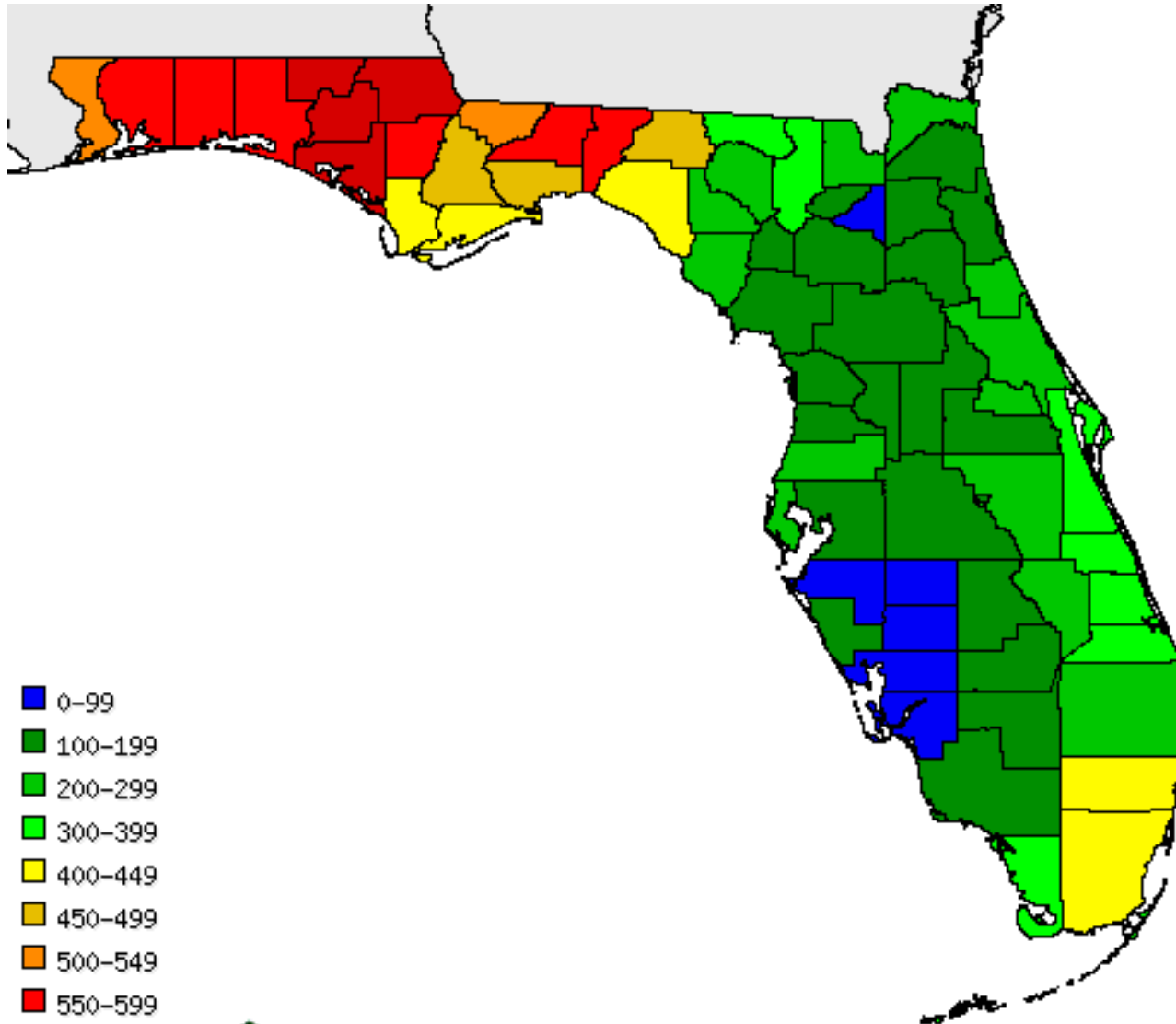
◇ indicates TROPICAL STORM ERIKA center location at 2 AM EDT Sat Aug 29 2015 (Forecast/Advisory #18)



Forecast 7 Day Rainfall Totals



Keetch Byram Drought Index (KBDI)



- 0-99
- 100-199
- 200-299
- 300-399
- 400-449
- 450-499
- 500-549
- 550-599
- 600-649
- 650-699
- 700-749
- 750+



Aug 28 2015

Outlook:

- As of 8AM EDT, the center of Tropical Storm Erika was located just north of eastern Cuba, or about 445 miles southeast of Miami.
- Erika is becoming even more disorganized, as the center has broken away from the main body of convection, which is currently just south of eastern Cuba.
- As of 9:30AM EDT, The National Hurricane Center has dissipated Erika into a trough of low pressure .
- Erika was a very weak tropical storm with maximum sustained winds of 40 mph, but a flight into the storm by the Air Force Hurricane Hunters has determined that tropical storm force winds are no longer present.
- A tropical weather outlook will be issued at that time to determine the chances of any regeneration of the remnants of Erika.
- If the remnants or Erika move into the Gulf, they will encounter warmer ocean waters and more moist air, however, the wind shear is even higher in this area, and will likely prevent the remnants from becoming very well organized.
- Although Erika is no longer a tropical storm, it is important to stay vigilant to the threats that still exist with the remnants, such as flooding and deadly rip currents.
- Elsewhere in the tropics, Invest 99L is a wave that is expected to emerge off the African West Coast later today, and the National Hurricane Center has given it a high (70%) chance of formation over the next 5 days.
- The next name on the hurricane list is Fred.

Florida Outlook:

- Although Erika is no longer a tropical storm, the remnants could still pose a threat to Florida.
- If the remnants of Erika continue on the current forecast track, the western half of the Peninsula could still receive several inches of rain.
- The flooding threat is still on the table, and if the remnants dump more than a couple inches over already saturated areas like West Central Florida, it will exacerbate flood conditions that are already present.
- If the remnants of Erika move into the Panhandle, flooding of smaller creeks, streams, urban and low-lying areas could occur.
- Rip currents will also be a concern if the remnants move northward through the western Gulf of Mexico.
- The remnants could cause elevated wave heights that arrive well before the rain , and remain for a time after the rain has passed.



TROPICAL UPDATE

Created by:

Molly Merrifield, Assistant State Meteorologist

Molly.Merrifield@em.myflorida.com

State Meteorological Support Unit

Florida Division of Emergency
Management