



TROPICAL UPDATE

5 PM EDT

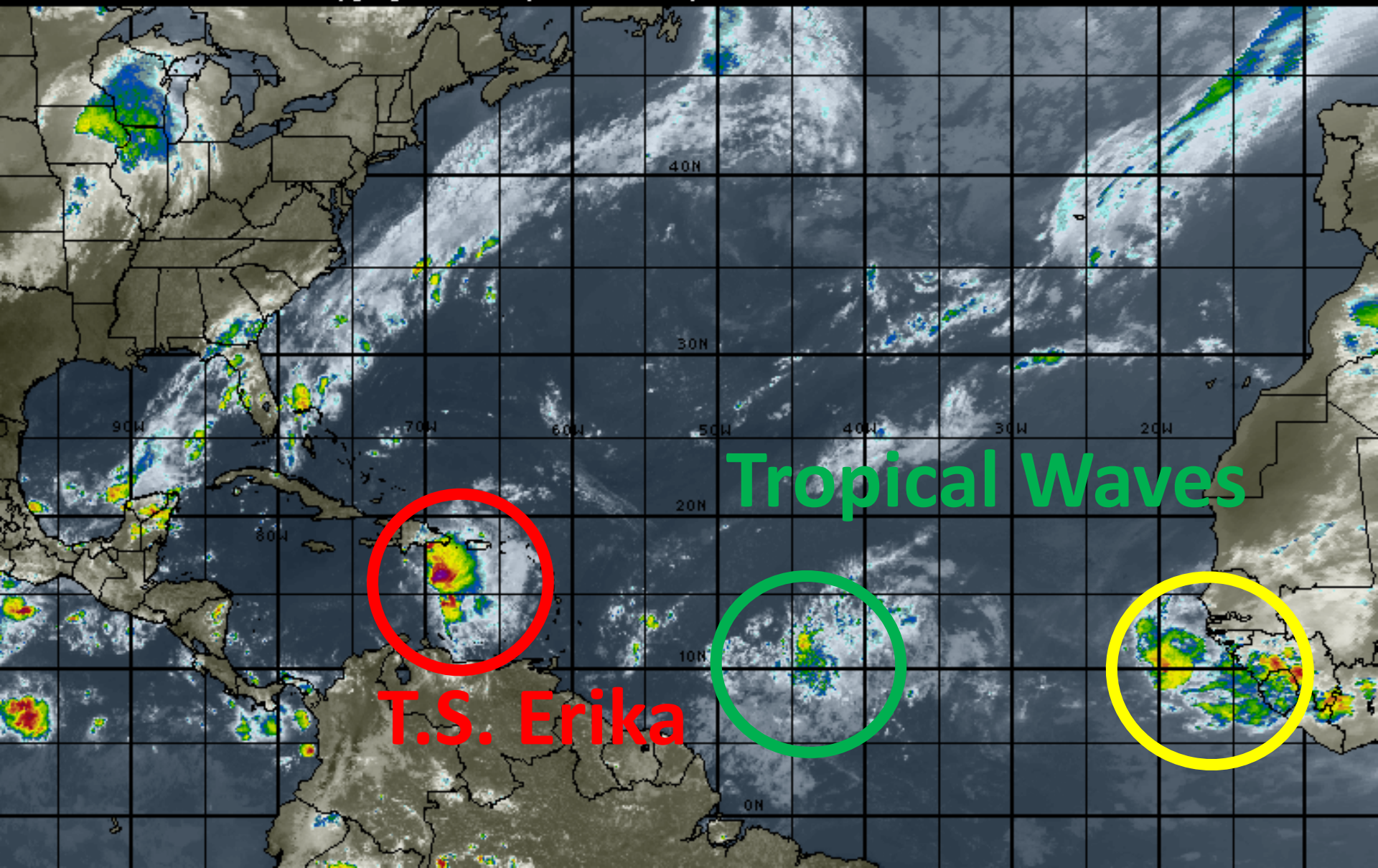
Friday, August 28, 2015

Tropical Storm Erika

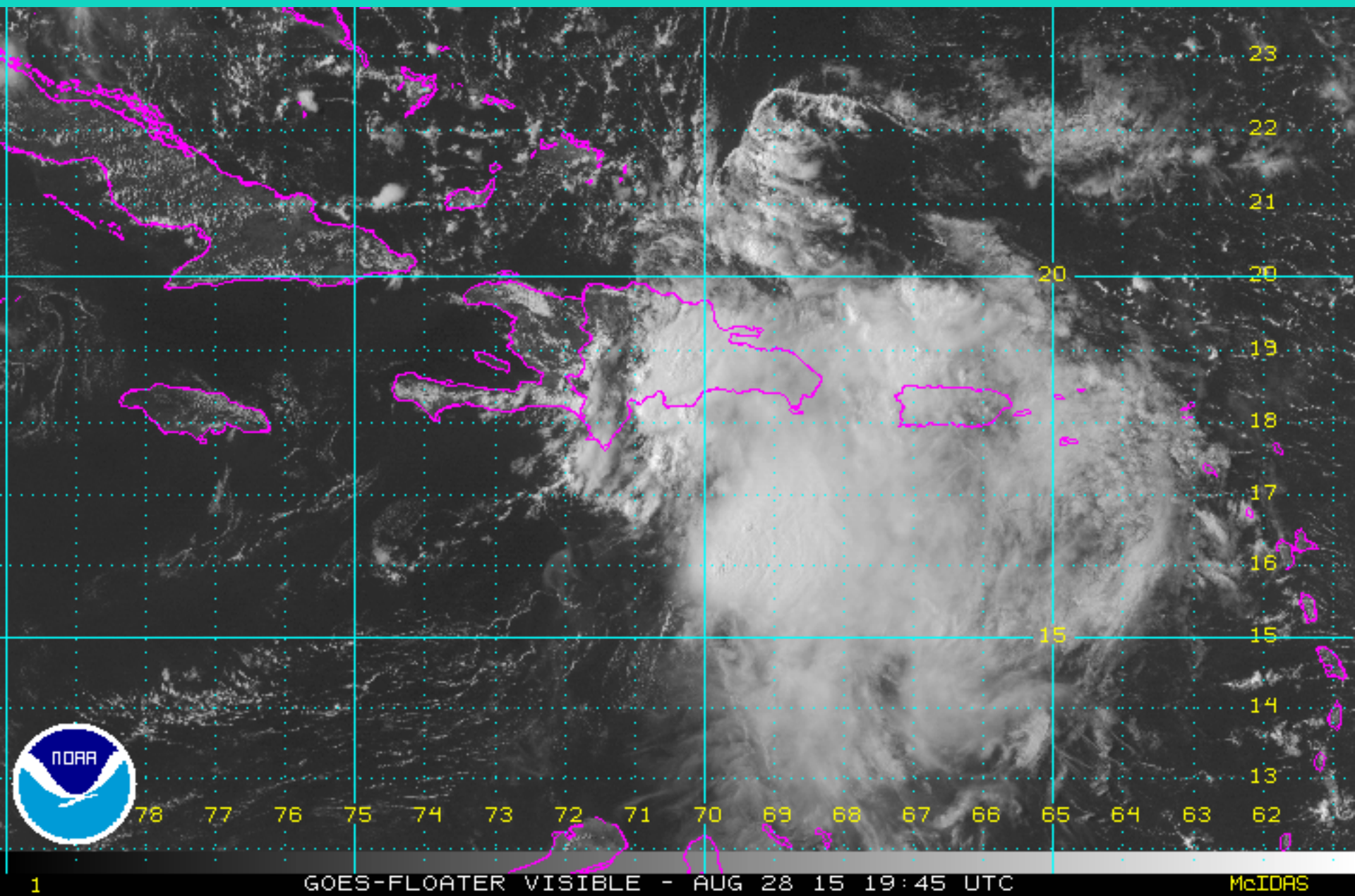
This update is intended for government and emergency response officials, and is provided for informational and situational awareness purposes only. Forecast conditions are subject to change based on a variety of environmental factors. For additional information, or for any life safety concerns with an active weather event please contact your County Emergency Management or Public Safety Office, local National Weather Service forecast office or visit the National Hurricane Center website at www.nhc.noaa.gov.

Atlantic Basin Satellite Image

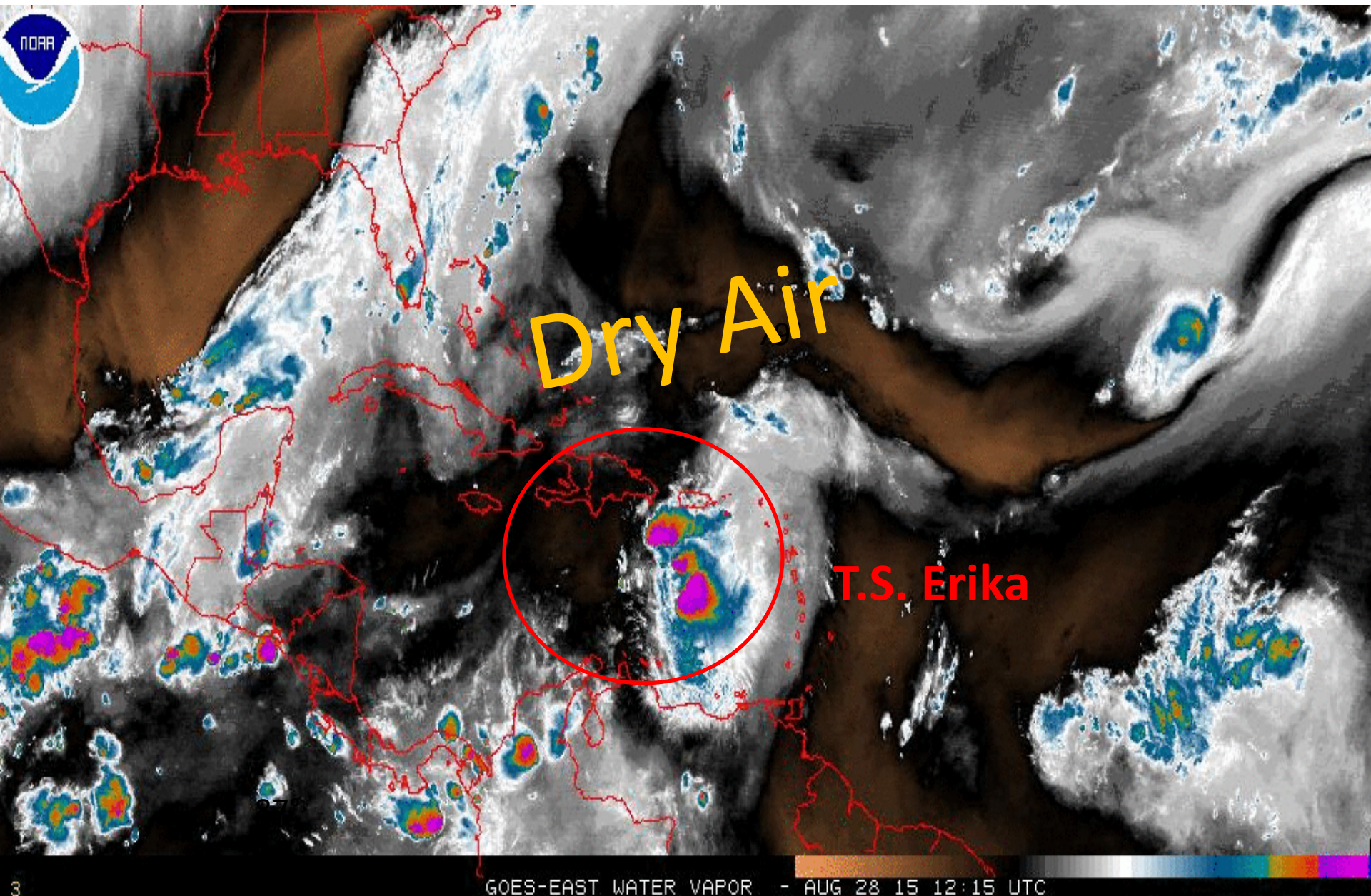
18:00 28-AUG-2015 GMT ©Copyright WSI Corporation <http://www.wsi.com>



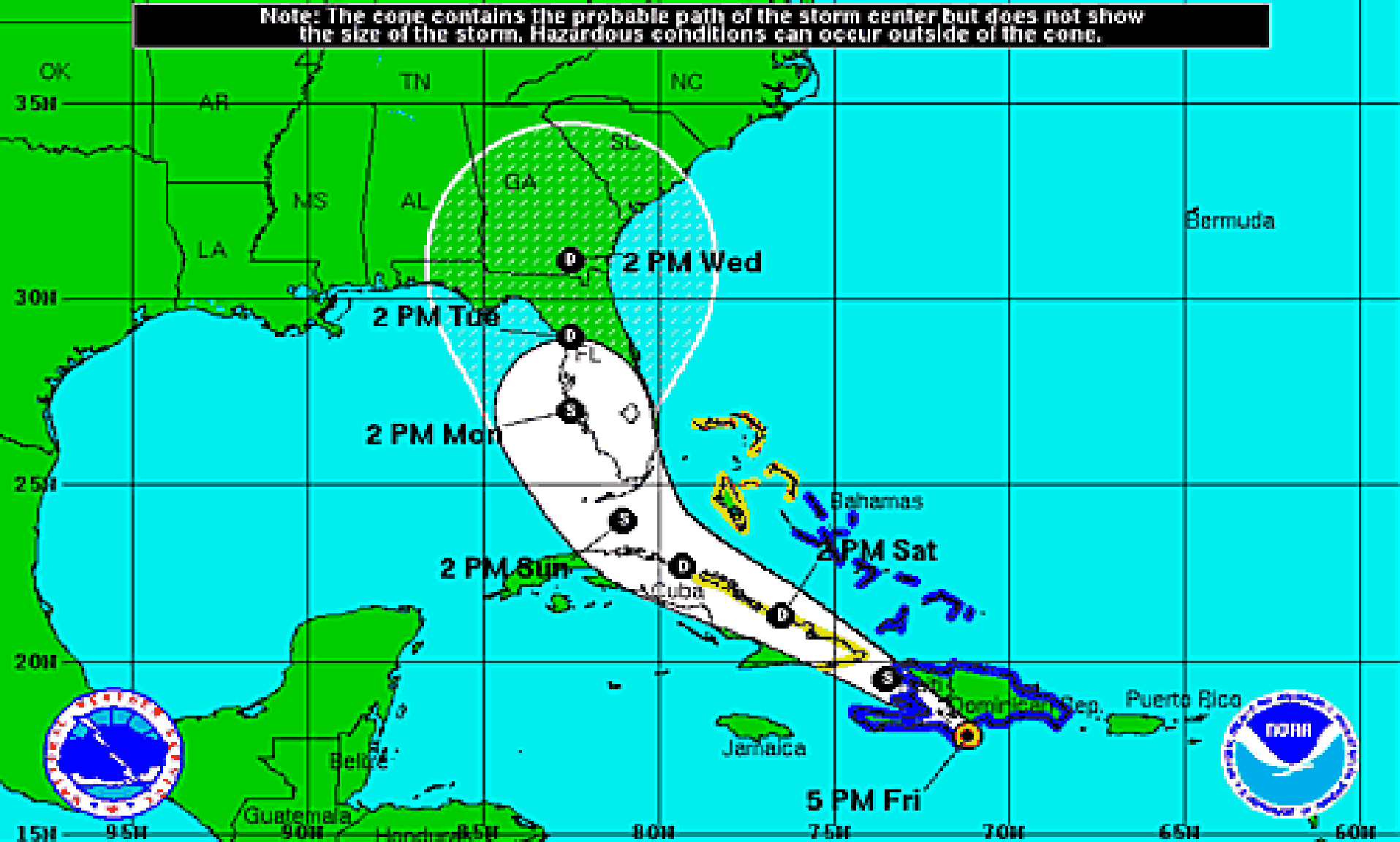
Satellite Image of T.S. Erika




Water Vapor Satellite Image





Note: The cone contains the probable path of the storm center but does not show the size of the storm. Hazardous conditions can occur outside of the cone.



Tropical Storm Erika
 Friday August 28, 2013
 5 PM EDT Advisory 16
 NWS National Hurricane Center

Current Information: 
 Center Location 17.9 N 71.2 W
 Max Sustained Wind 50 mph
 Movement W at 21 mph

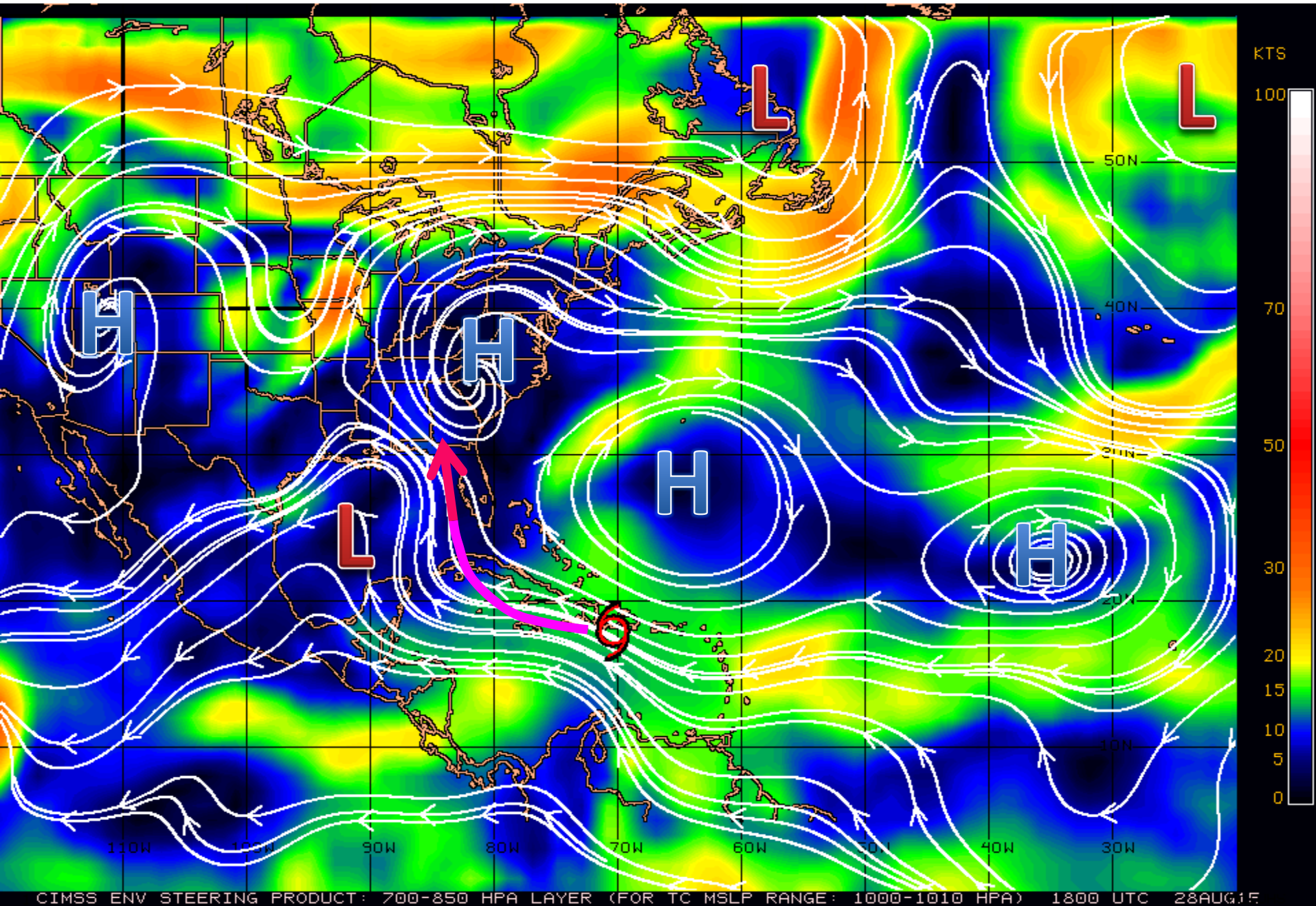
Forecast Positions:
 Tropical Cyclone  Post-Tropical
 Sustained Winds: D < 39 mph
 S 39-73 mph H 74-110 mph M > 110mph

Potential Track Area:
 Day 1-3  Day 4-5

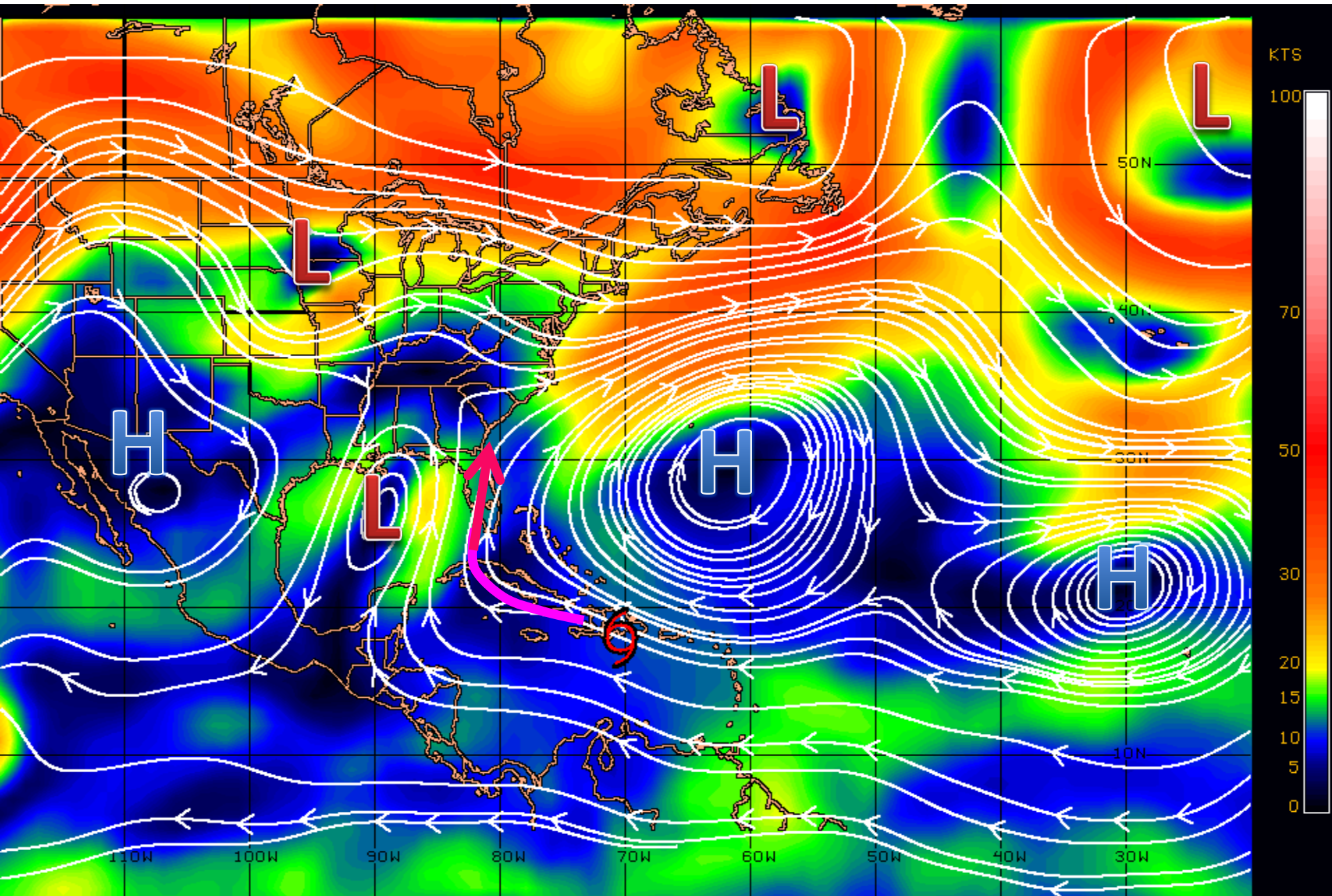
Watches:
 Hurricane  Trop.Storm

Warnings:
 Hurricane  Trop.Storm

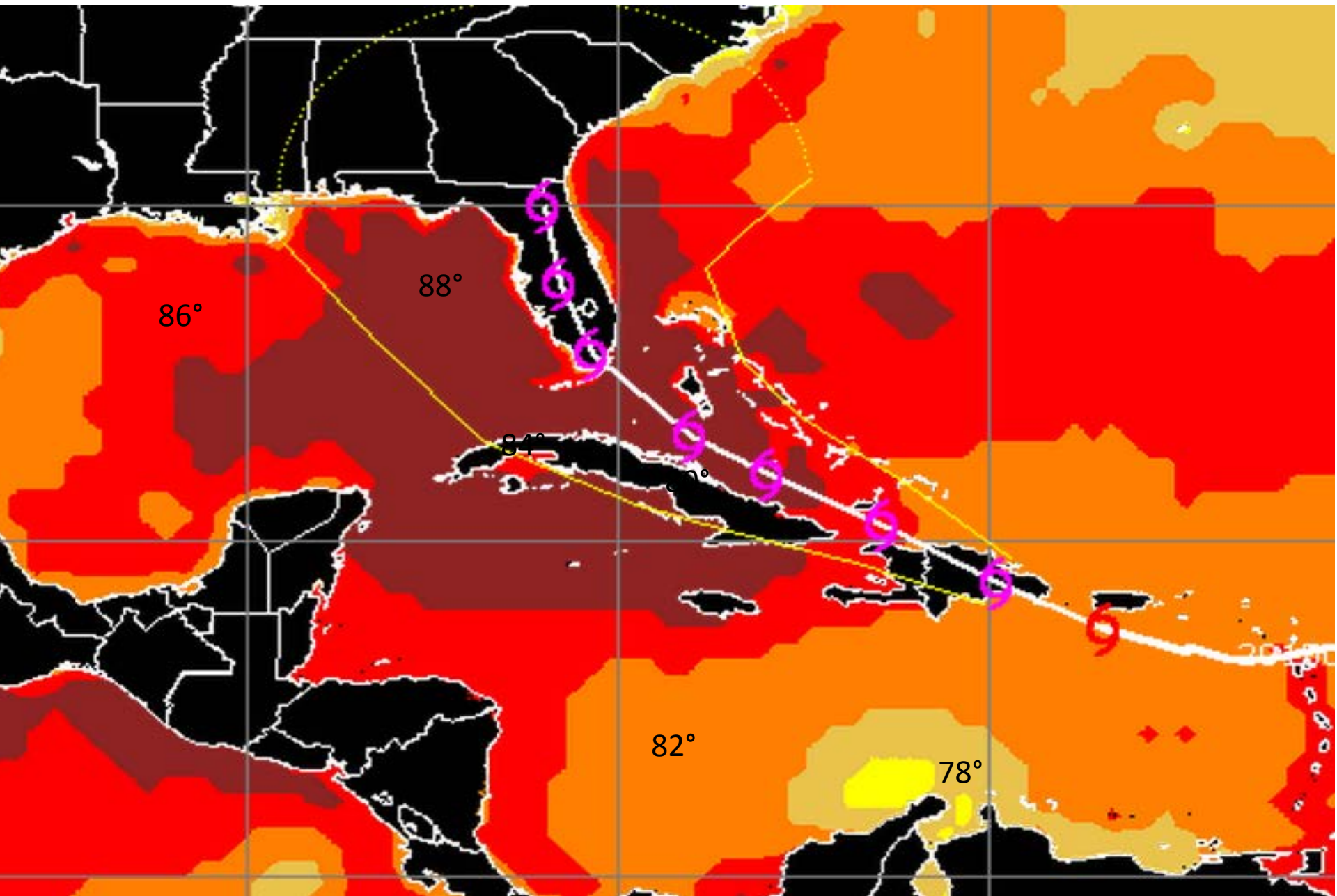
Steering Currents – Low Levels



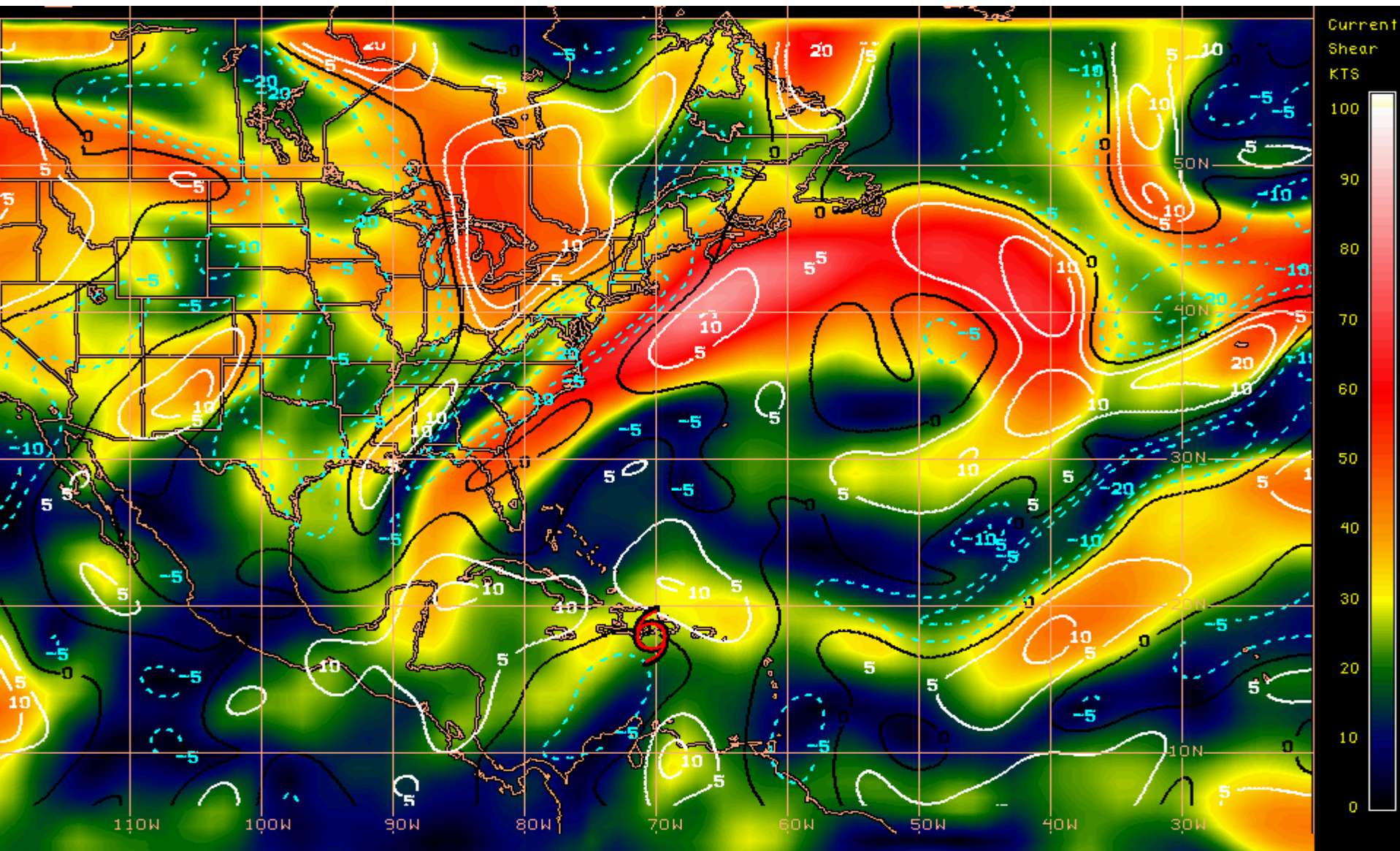
Steering Currents – Upper Levels



Sea Surface Temperatures Near T.S. Erika



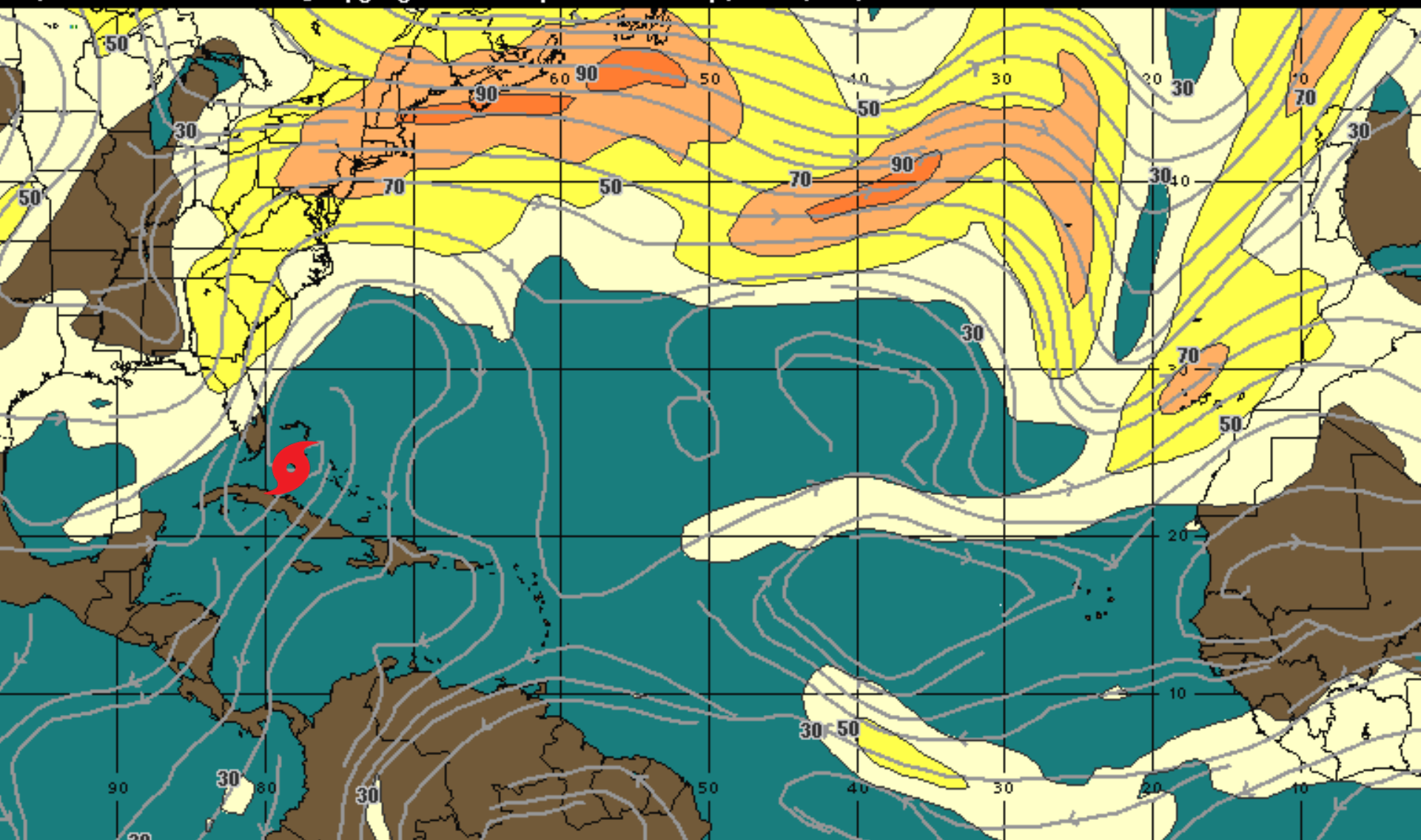
Current Wind Shear (shaded) and Shear Tendency (contours)



Shear Tendency (KTS) Over Past 24 Hours: Increasing — Decreasing ----

Forecast Wind Shear-Sunday

12:00 30-AUG-2015 GMT ©Copyright MSI Corporation <http://www.wsi.com>

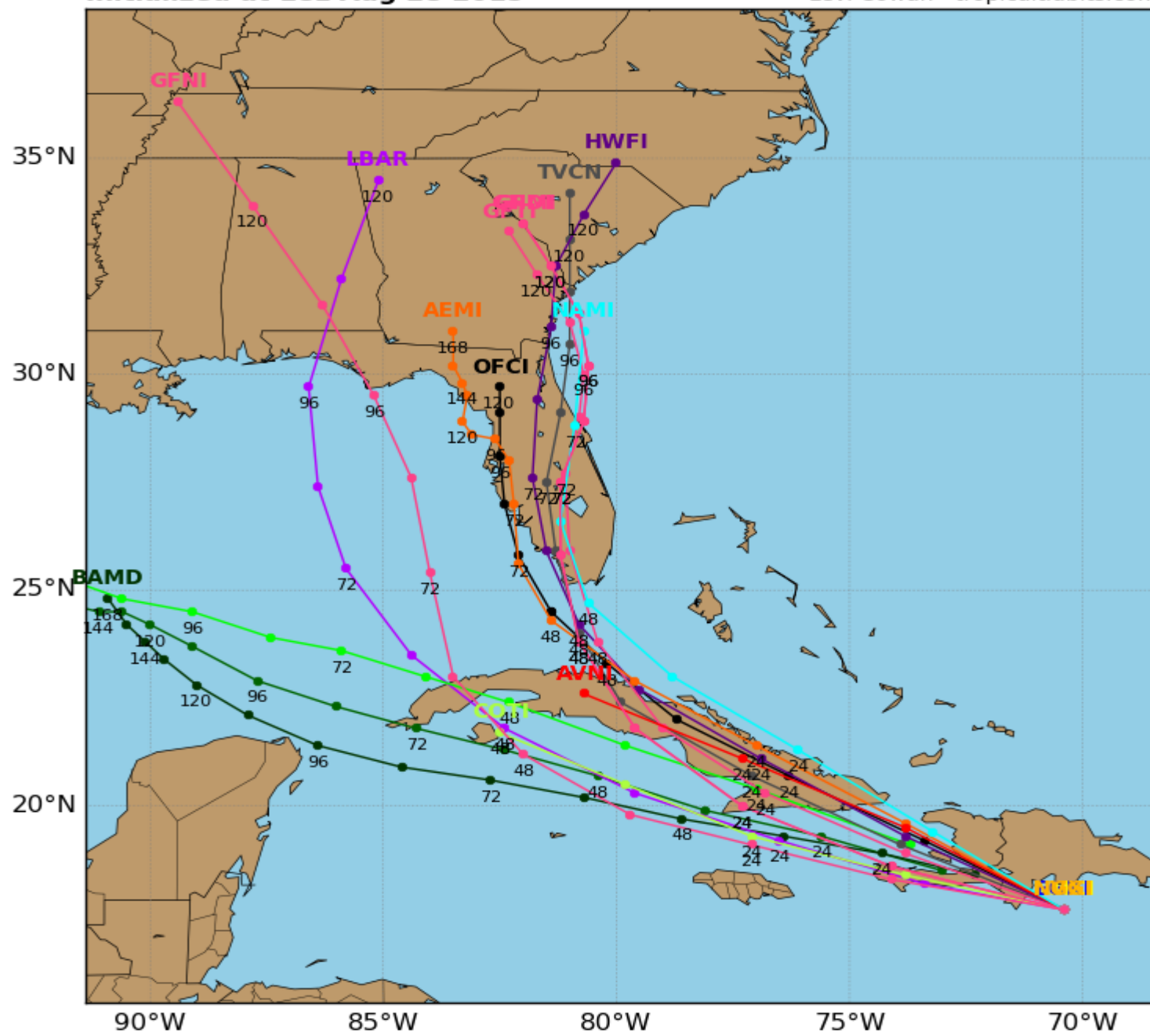


200Mb Wind Speed / Streamline Forecast
Valid 1200 UTC Sun 30-Aug-15

30 mph 50 70 90 110 130 150 +

WSI®

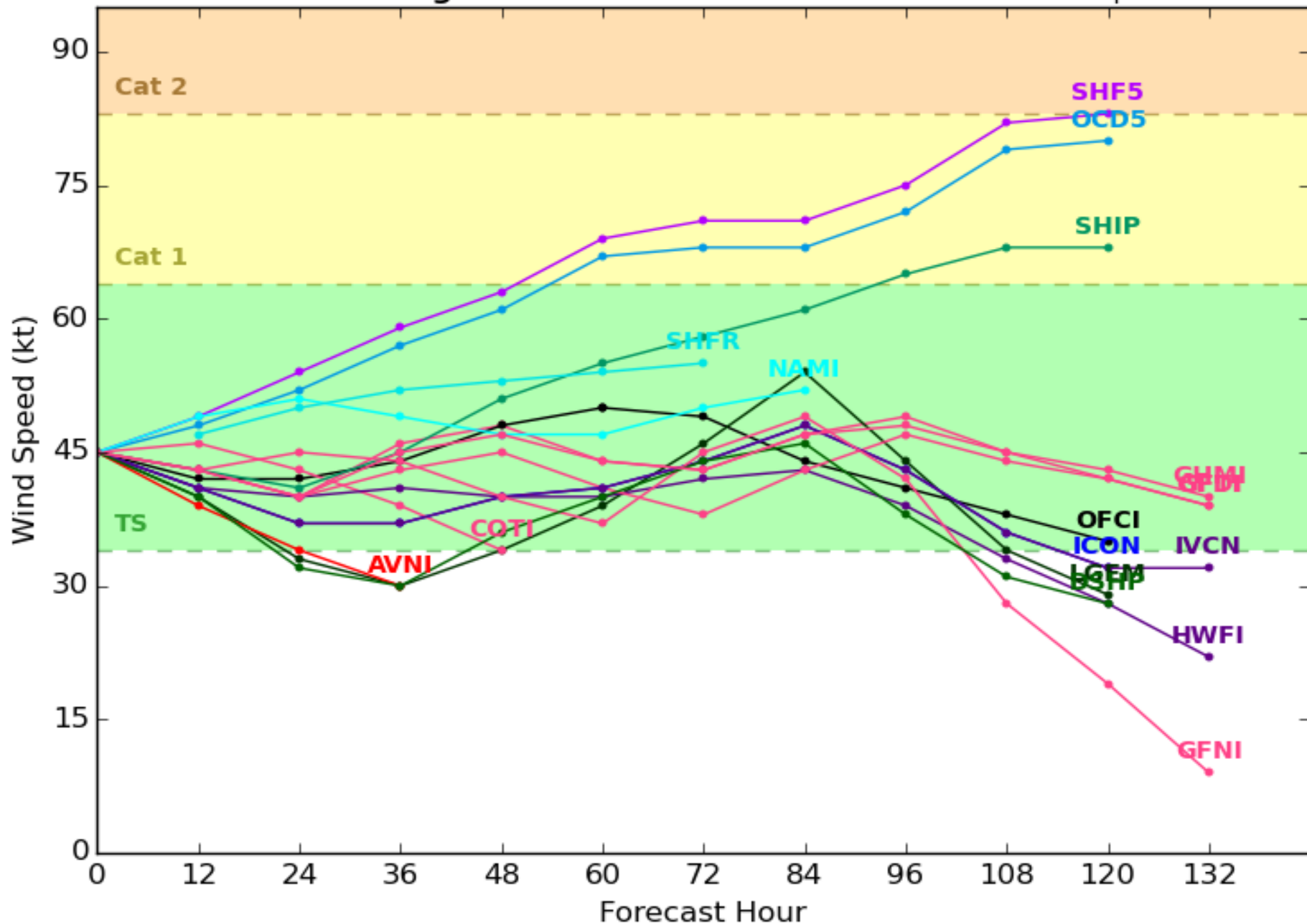
Levi Cowan - tropicaltidbits.com

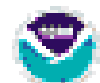


Tropical Storm ERIKA Model Intensity Guidance

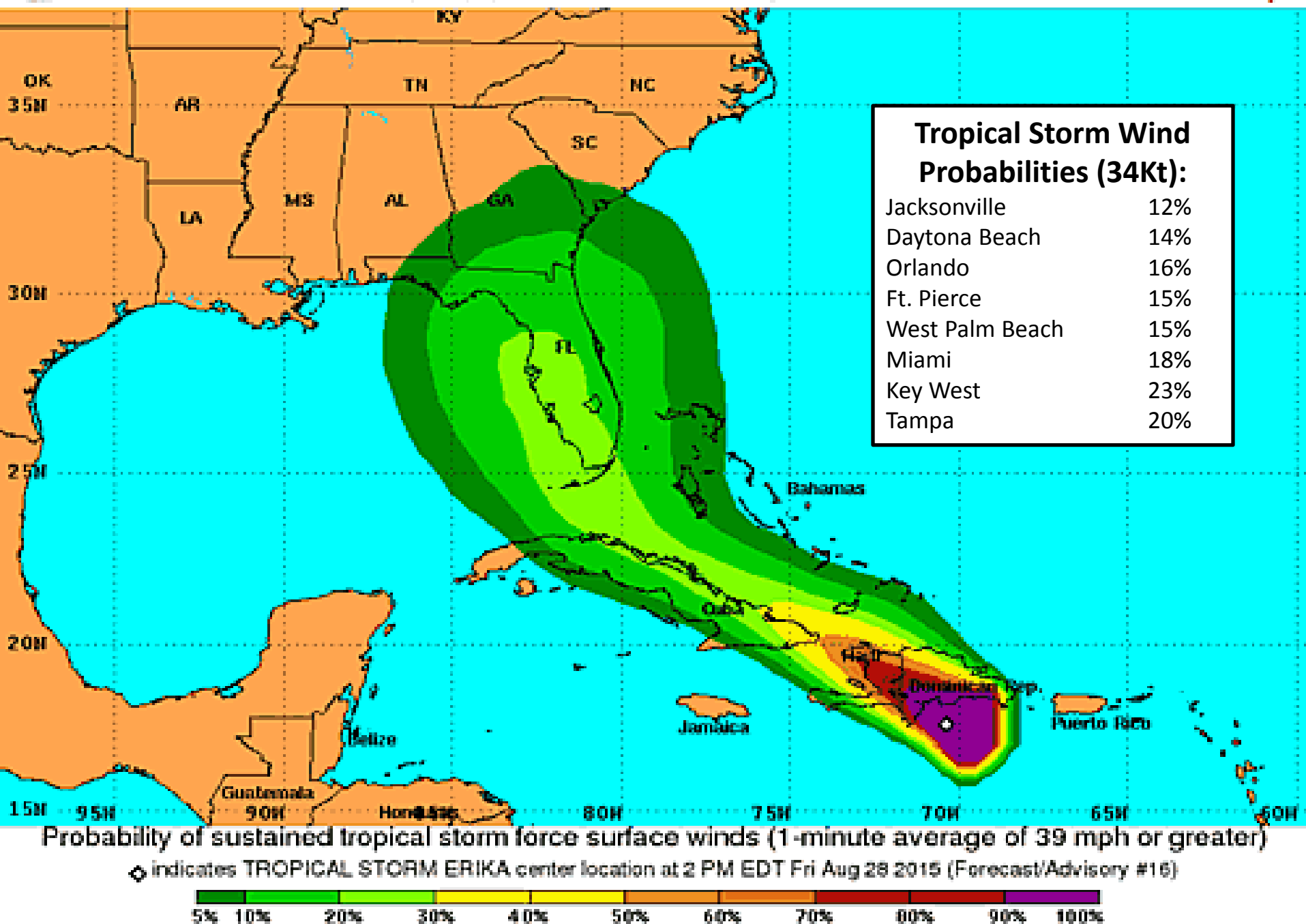
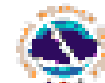
Initialized at 18z Aug 28 2015

Levi Cowan - tropicaltidbits.com





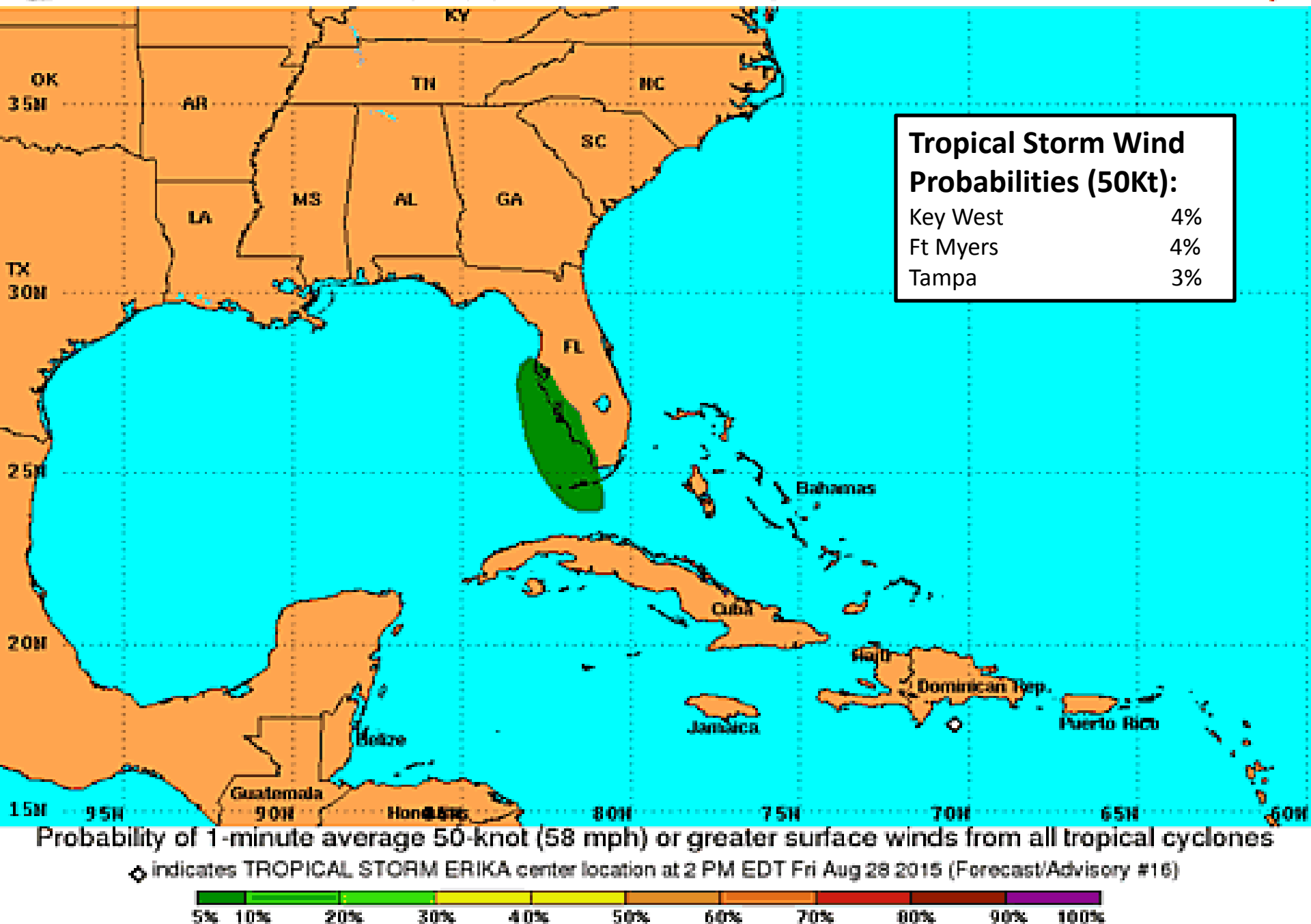
PRELIMINARY (SINGLE STORM) Tropical Storm Force Wind Speed Probabilities
For the 120 hours (5 days) from 2 PM EDT Fri Aug 28 to 2 PM EDT Wed Sep 2



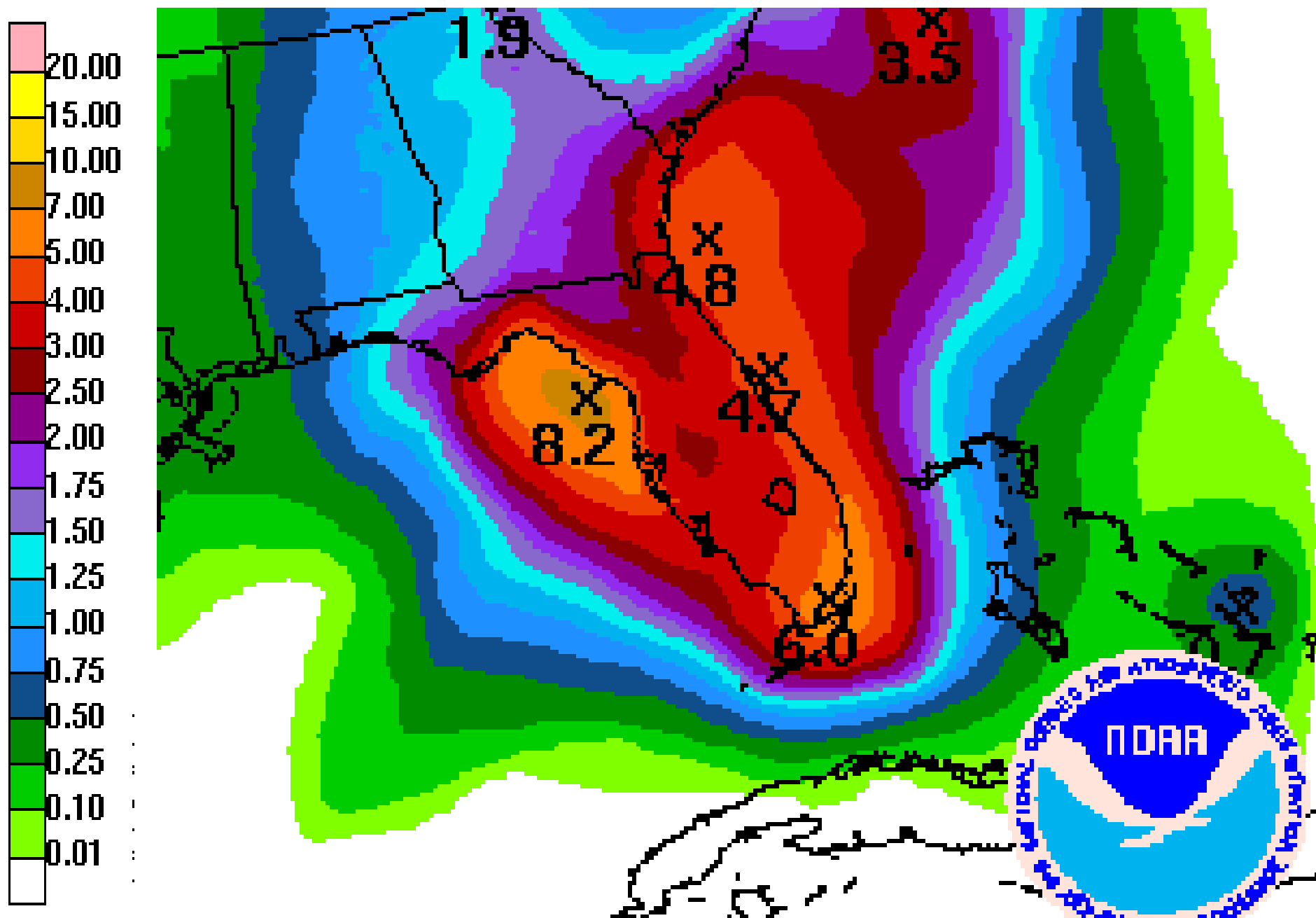


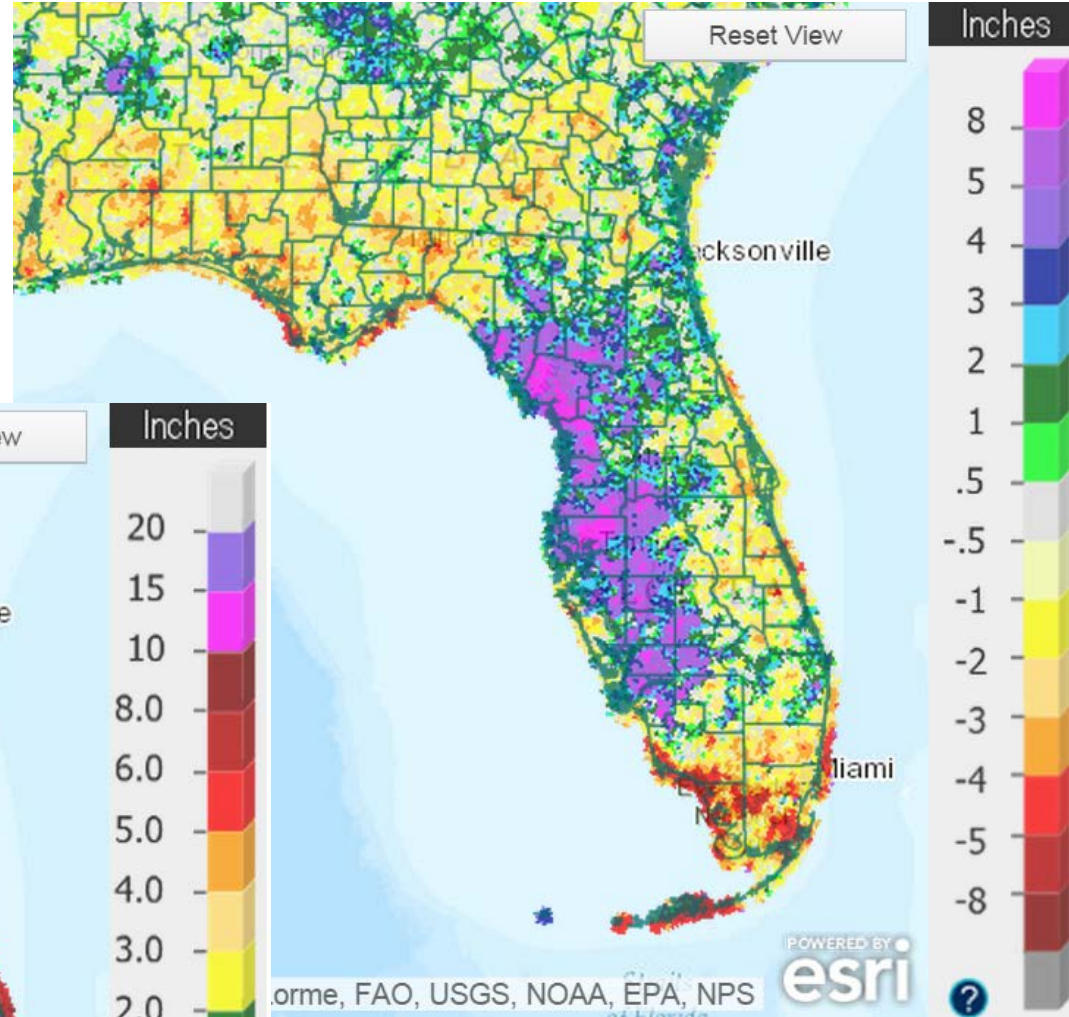
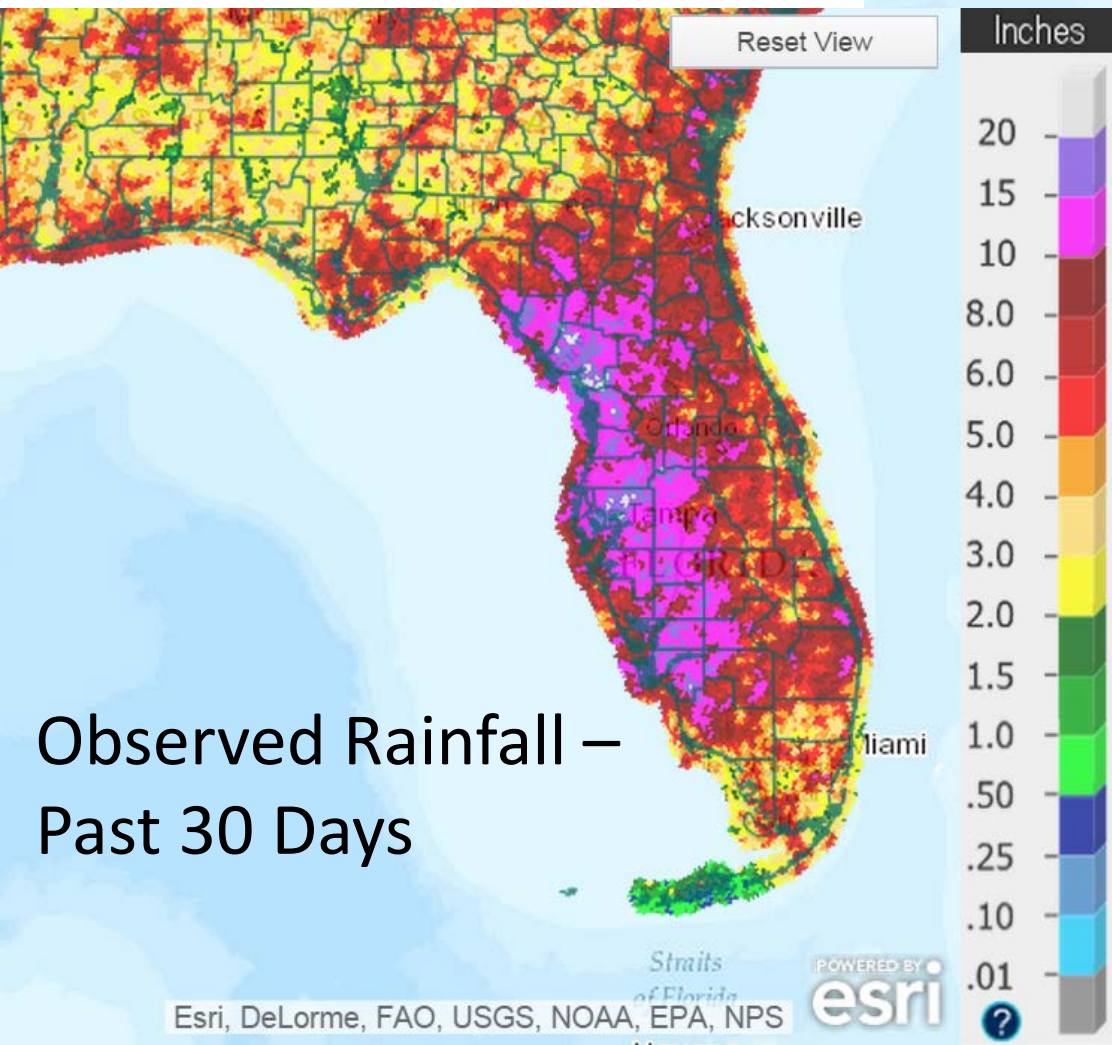
50-knot Wind Speed Probabilities

For the 120 hours (5 days) from 2 PM EDT Fri Aug 28 to 2 PM EDT Wed Sep 2



Forecast 7 Day Rainfall Totals





**Departure From
Normal – Past 30 Days**

Outlook:

- At 5PM EDT Friday, Tropical Storm Erika was located in the eastern Caribbean Sea 95 miles west-southwest of Santo Domingo, Dominican Republic, or 793 miles southeast of Miami.
- Erika is quickly moving towards the west at 21 mph, and a turn to the west-northwest or northwest is expected tonight.
- This motion is expected to continue with a decrease in forward speed through Sunday.
- On this current track, the center of Erika will move over the Dominican Republic and Haiti during the next several hours, and be near the southeastern Bahamas or eastern Cuba on Saturday.
- Computer models are still somewhat uncertain about Erika's track after the next 36 to 48 hours or so, assuming a center of circulation remains intact after the next 24 to 36 hours.
- Each advisory has trended westward with time today, and may continue if Erika continues on a westward track through the night.
- Although Erika is very disorganized, the Hurricane Hunters are still finding tropical storm force winds.
- Maximum sustained winds are near 50mph with higher gusts, and weakening is forecast over the next 48 hours as Erika battles the effects of dry air, increasing wind shear, and land interaction.
- Erika is now forecast to become a tropical depression on Saturday.
- There is a possibility that Erika will dissipate to a low pressure system during or shortly after its passage over Hispaniola.

Florida Outlook:

- All of the state except the Western Panhandle is within the 5 day forecast cone, and the Peninsula as far north as Crystal River is now within the 3 day forecast cone.
- Portions of South Florida and Central Florida now have between a 20% and 30% chance of experiencing tropical storm force winds over the next 5 days.
- It is important when looking at these probability graphics to not focus on the number, but rather the trends as new products become available. The probabilities of tropical storm force winds have decreased across the state, in some areas significantly.
- Tropical Storm Watches could be issued as early as tonight for portions of South Florida, if the current forecast holds, as South Florida is possible now within 48 hours of experiencing tropical storm conditions.
- Given the uncertainty in the forecast in the 3 to 5 day range, it is very difficult to determine exact impacts to Florida.
- Heavy rainfall is an increasing threat, and the Weather Prediction Center has forecast that up to 6 inches or so of widespread rainfall could occur across parts of the state, depending on the ultimate path and strength of Erika.
- Isolated rainfall totals of up to a foot are possible in the heaviest hit areas.
- In the worst-case scenario, many rivers across the state, particularly in and around West Central Florida, may experience moderate to major flooding.
- In addition, high surf and waves along the coasts this weekend could cause minor coastal flooding and beach erosion.



TROPICAL UPDATE

Created by:

Molly Merrifield, Assistant State Meteorologist

Molly.Merrifield@em.myflorida.com

State Meteorological Support Unit

Florida Division of Emergency
Management