



TROPICAL UPDATE

8 AM EDT

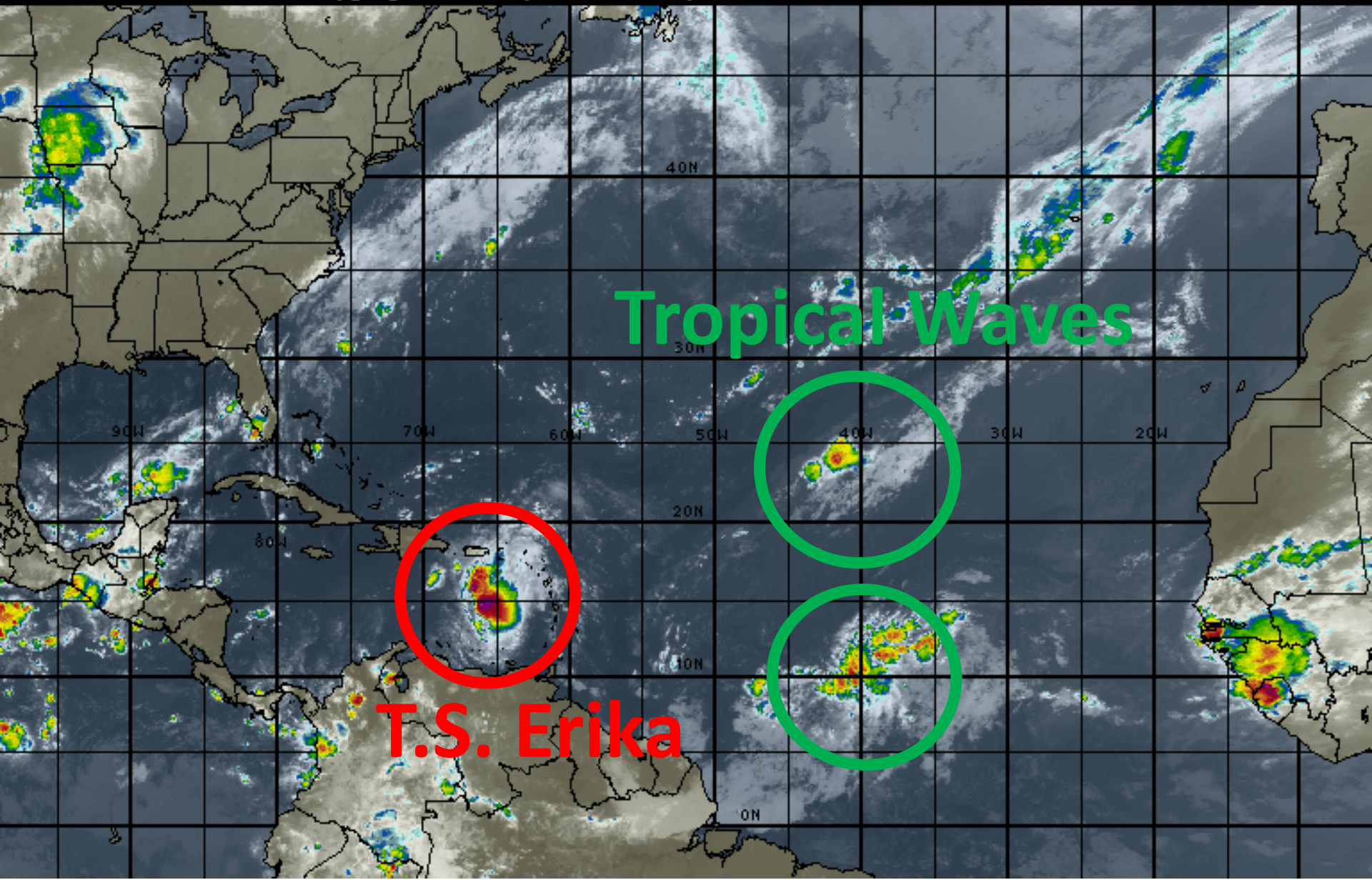
Friday, August 28, 2015

Tropical Storm Erika

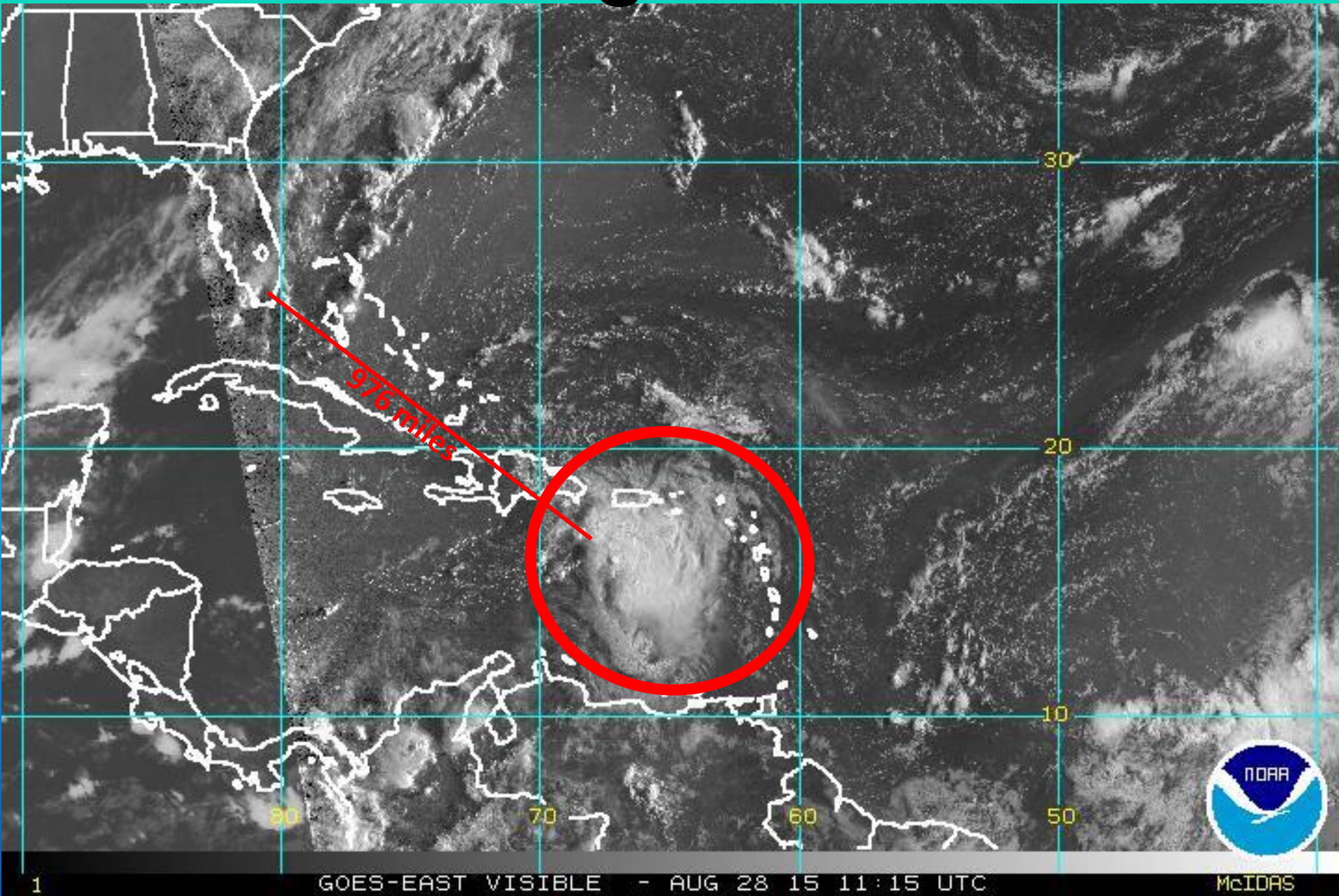
This update is intended for government and emergency response officials, and is provided for informational and situational awareness purposes only. Forecast conditions are subject to change based on a variety of environmental factors. For additional information, or for any life safety concerns with an active weather event please contact your County Emergency Management or Public Safety Office, local National Weather Service forecast office or visit the National Hurricane Center website at www.nhc.noaa.gov.

Atlantic Basin Satellite Image

09:00 28-AUG-2015 GMT ©Copyright WSI Corporation <http://www.wsi.com>



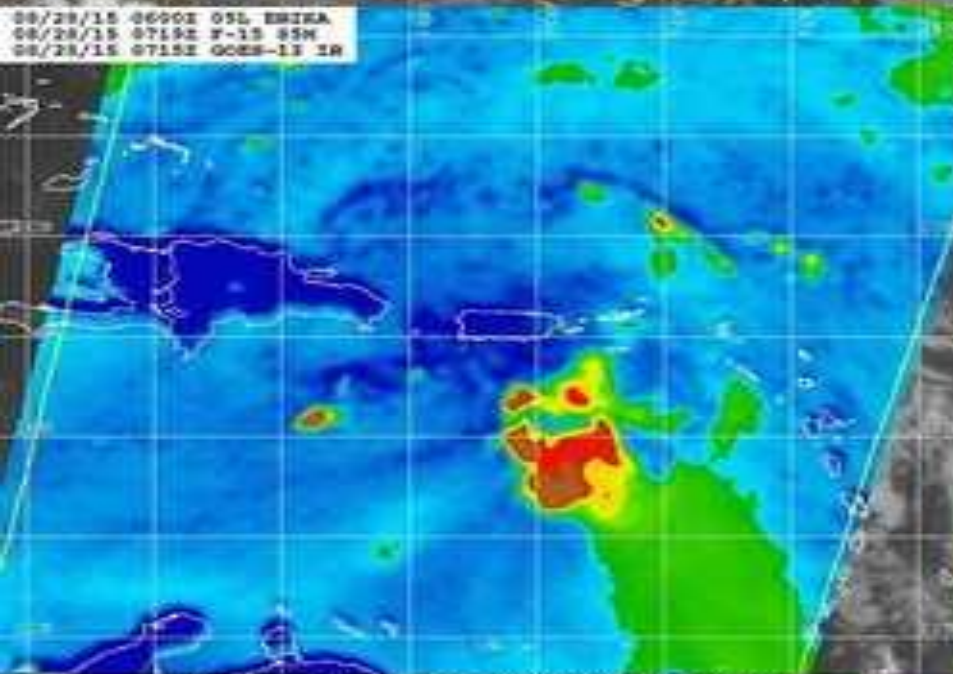
Satellite Images of T.S. Erika



08/28/15 0600Z OSL ERIKA
08/28/15 0719Z F-15 OVERPASS
08/28/15 0715Z GOES-13 IR

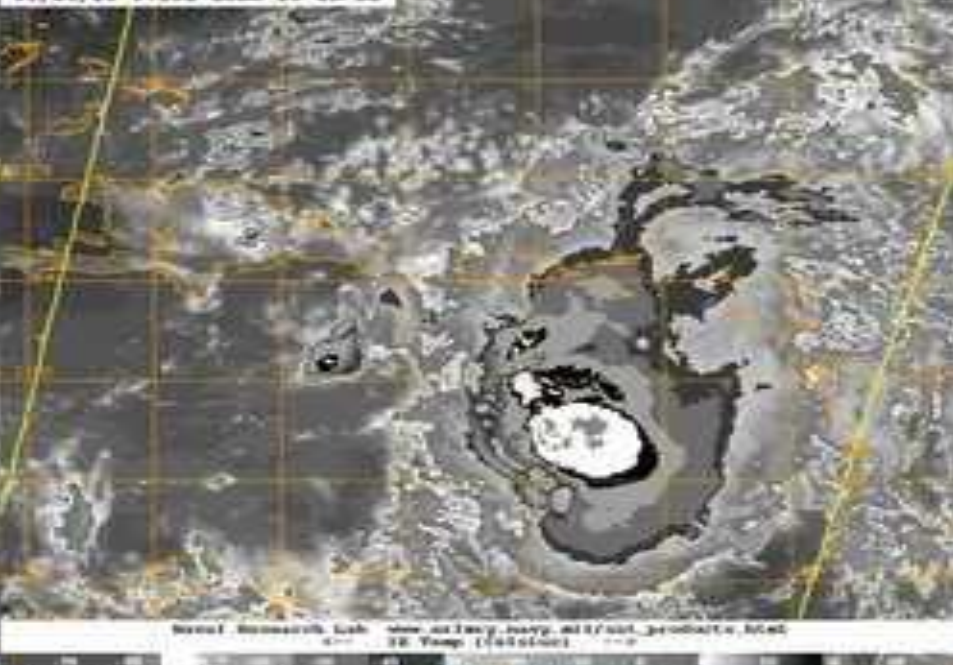


08/28/15 0600Z OSL ERIKA
08/28/15 0719Z F-15 85M
08/28/15 0715Z GOES-13 IR



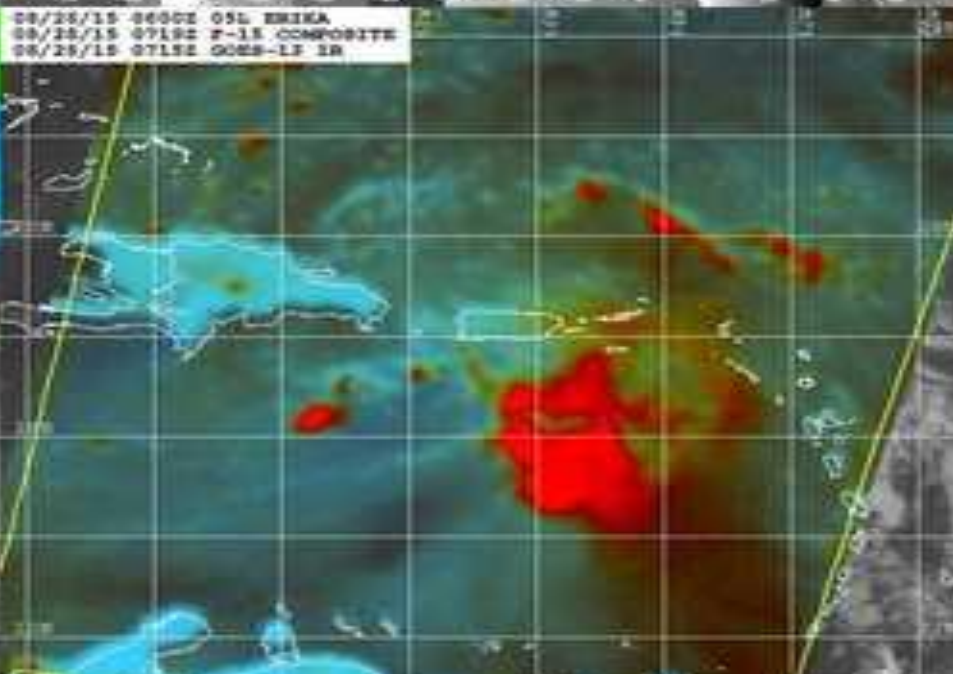
Naval Research Lab www.nrlmry.navy.mil/out_products.html
--- 870 Brightness Temp (Kelvin) ---

08/28/15 0600Z OSL ERIKA
08/28/15 0719Z F-15 OVERPASS
08/28/15 0715Z GOES-13 IR-SD



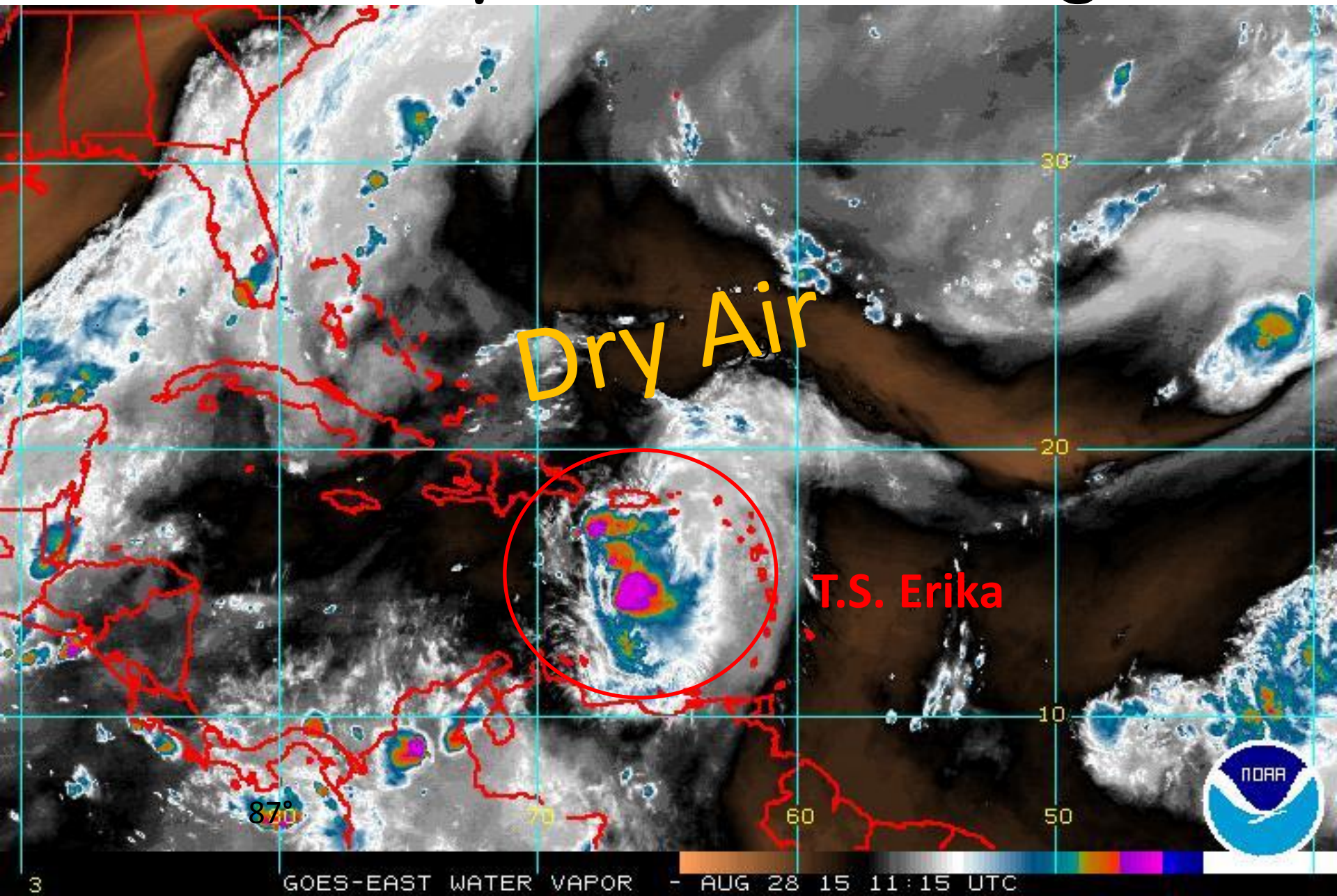
Naval Research Lab www.nrlmry.navy.mil/out_products.html
--- 12 Temp (Kelvin) ---

08/28/15 0600Z OSL ERIKA
08/28/15 0719Z F-15 COMPOSITE
08/28/15 0715Z GOES-13 IR



Naval Research Lab www.nrlmry.navy.mil/out_products.html
--- 870 Brightness Temp (Kelvin) ---

Water Vapor Satellite Image



Tropical Storm Erika

5 AM EDT Fri Aug 28 2015

Position 17.7°N 67.7°W

Maximum Winds 50 mph

Gusts 65 mph

Movement WNW at 17 mph

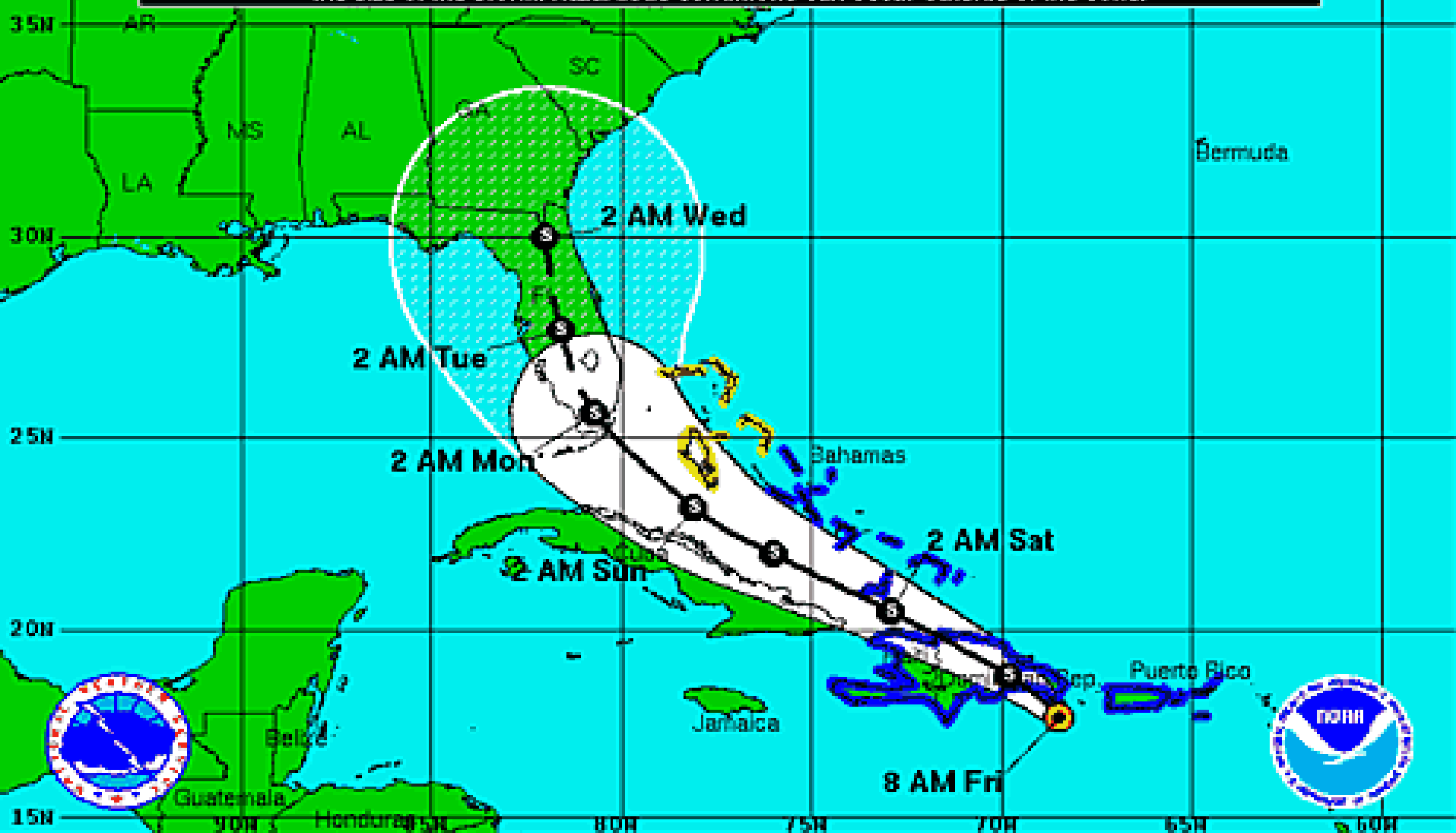
Minimum Pressure 1006 mb (29.70 inches)

Blue Marble basemap imagery courtesy NASA

Satellite 11:43 AM UTC
7:43 AM EDT



Note: The cone contains the probable path of the storm center but does not show the size of the storm. Hazardous conditions can occur outside of the cone.



Tropical Storm Erika

Friday August 28, 2013

8 AM EDT Intermediate Advisory 14A

NWS National Hurricane Center

Current Information:

Center Location 17.7 N 68.5 W

Max Sustained Wind 50 mph

Movement WNW at 17 mph

Forecast Positions:

● Tropical Cyclone ○ Post-Tropical

Sustained Winds: D < 39 mph

S 39-73 mph H 74-110 mph M > 110mph

Potential Track Area:

Day 1-3 Day 4-5

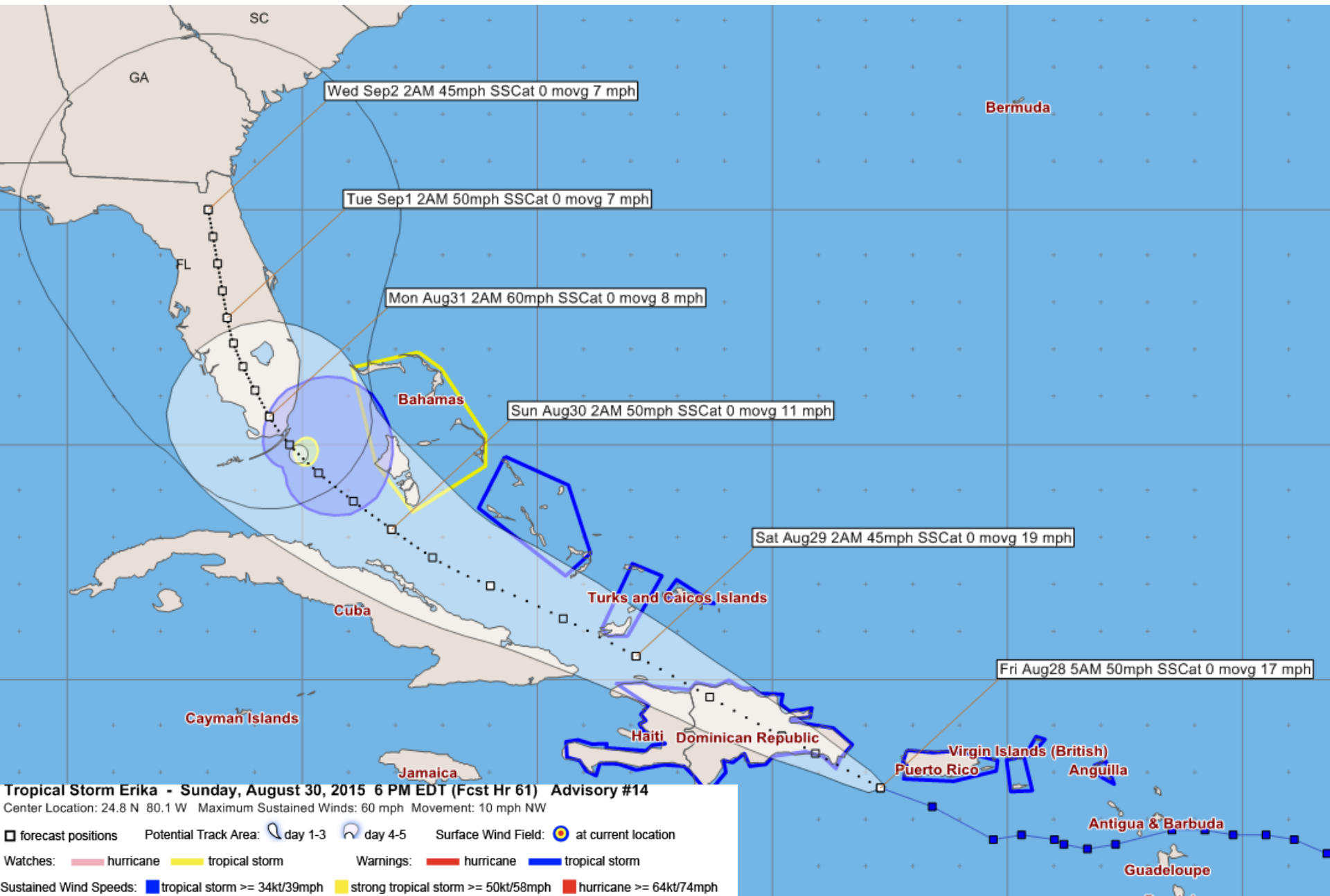
Watches:

Hurricane Trop.Storm

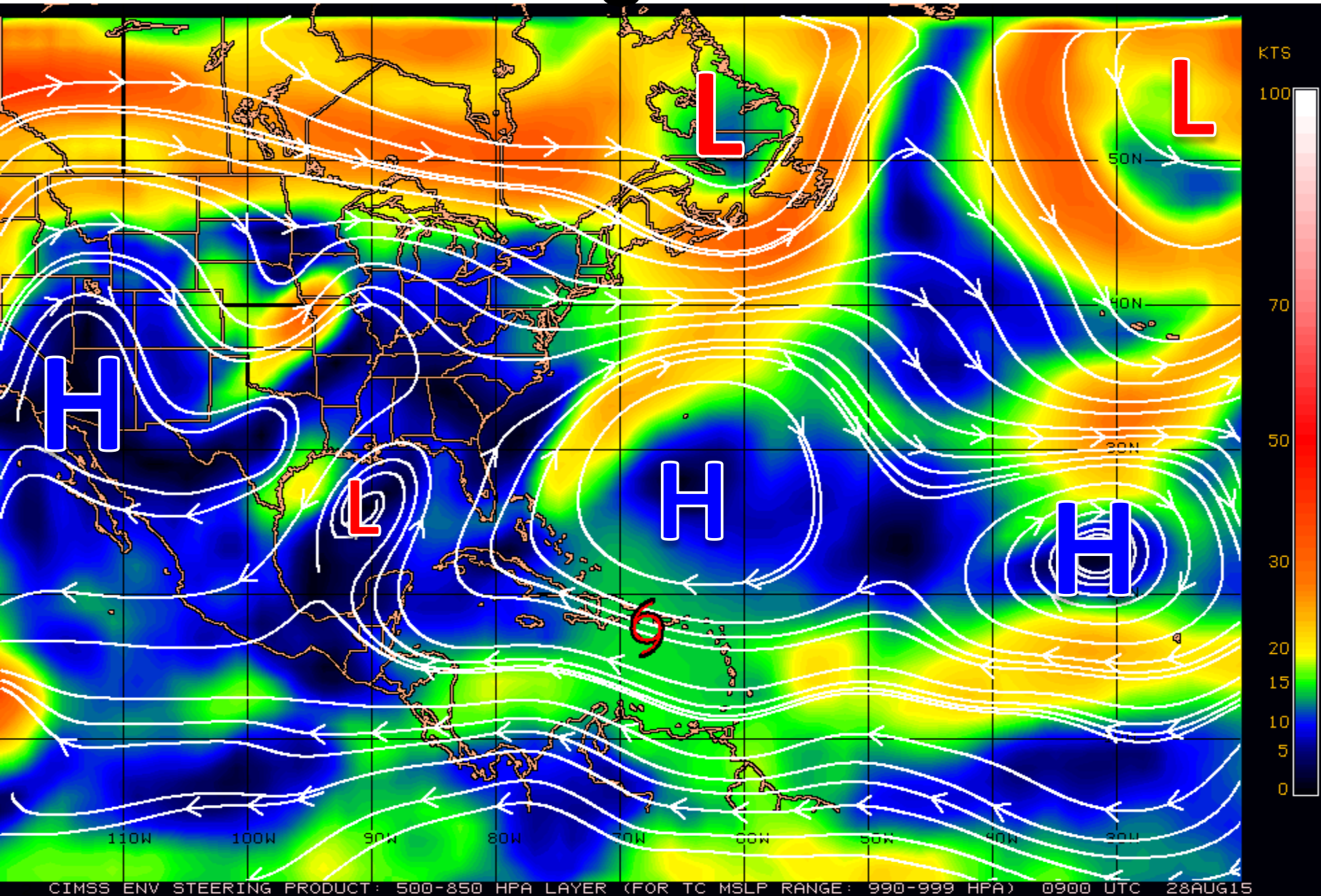
Warnings:

Hurricane Trop.Storm

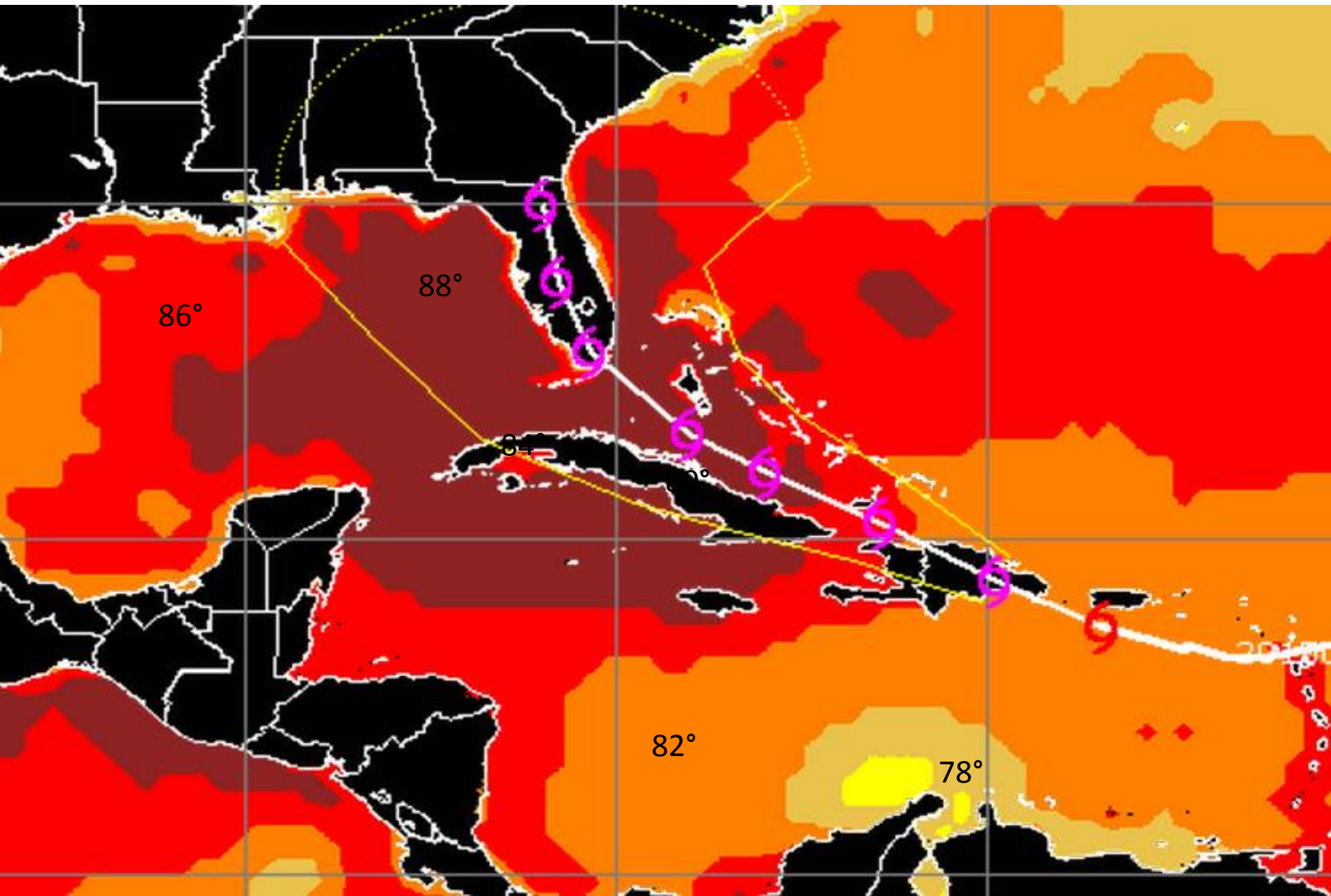
3 Day Wind Swath and NHC Forecast Track



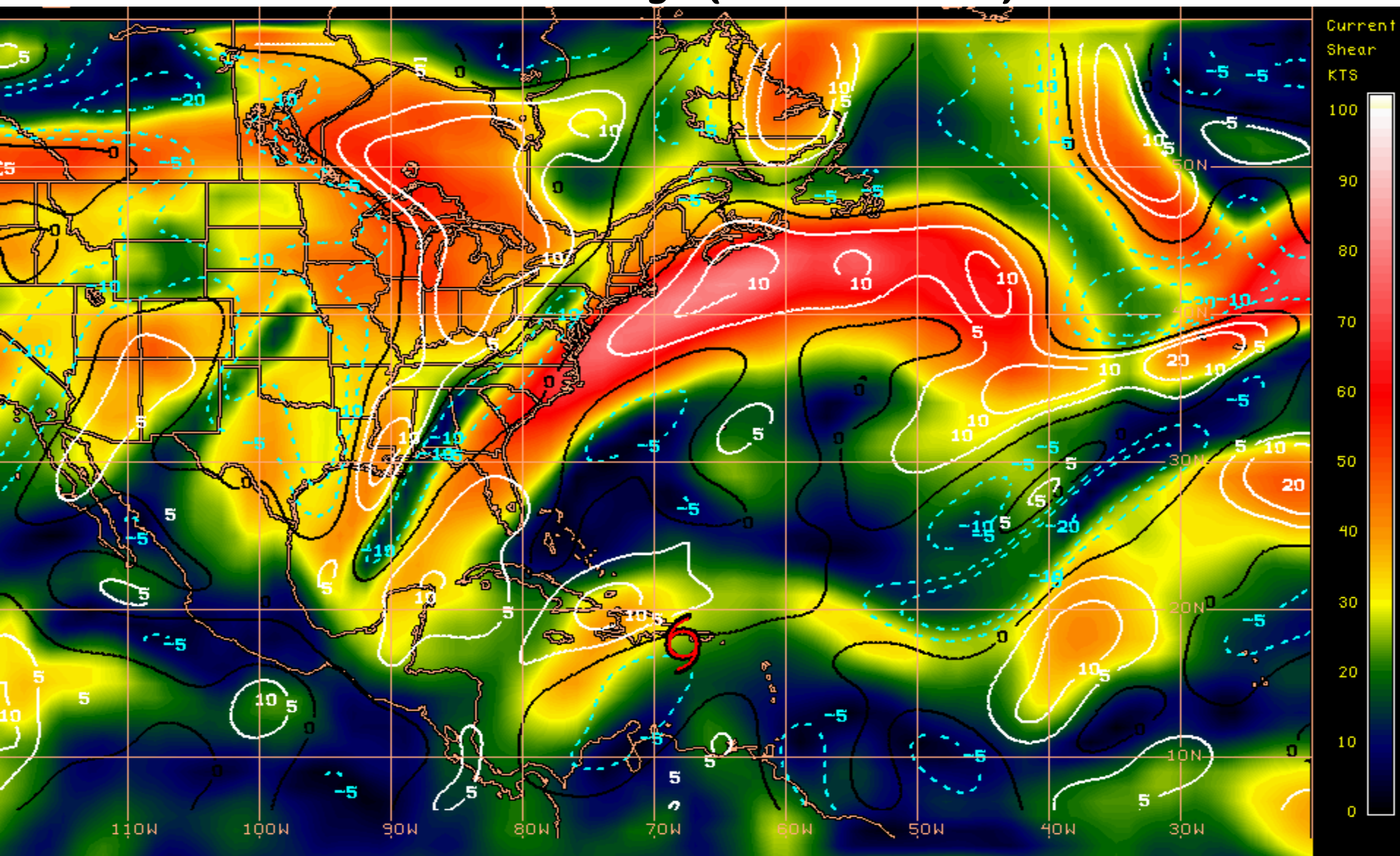
Steering Currents



Sea Surface Temperatures Near T.S. Erika



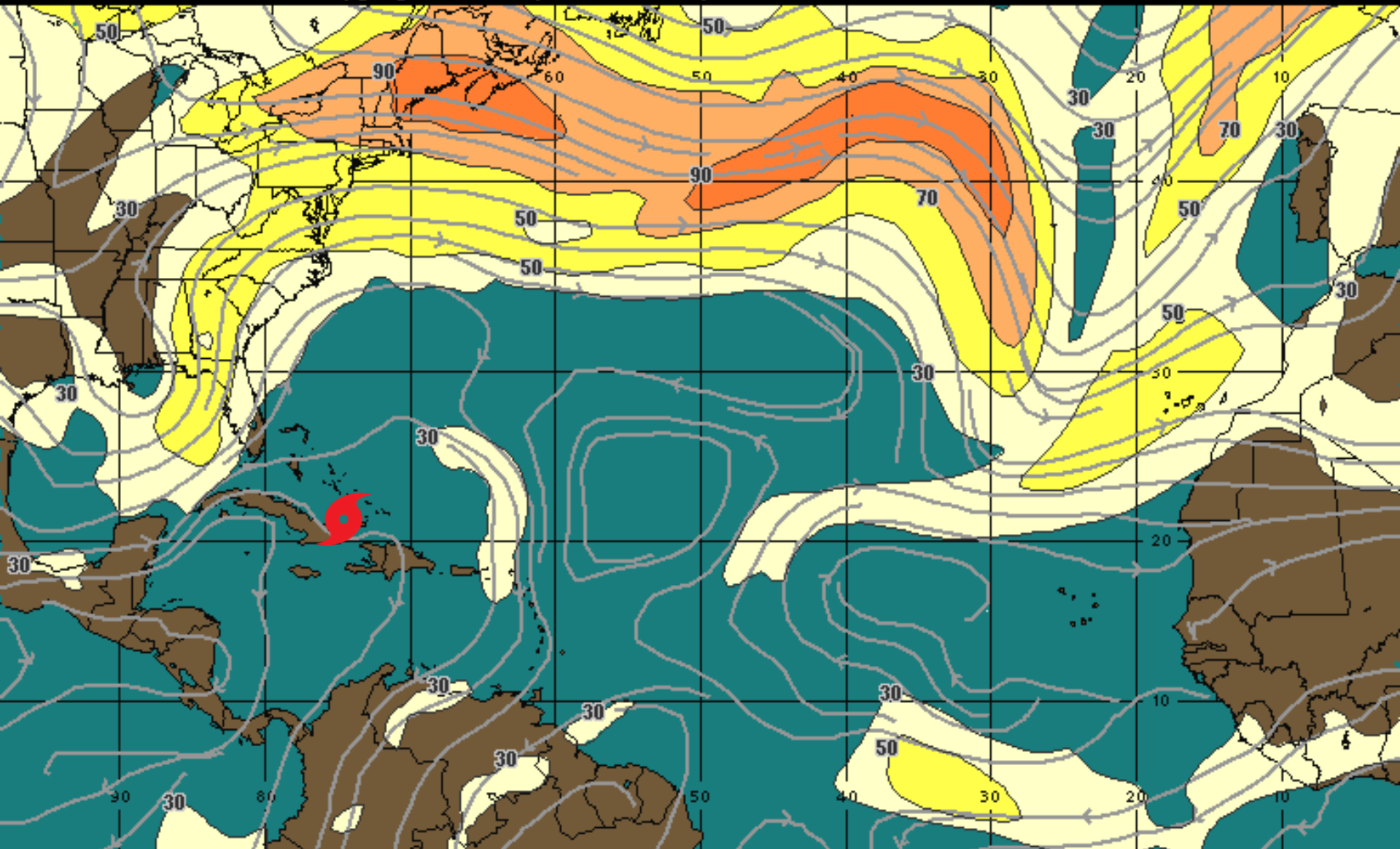
Current Wind Shear (shaded) and Shear Tendency (contours)



Shear Tendency (KTS) Over Past 24 Hours: Increasing — Decreasing ----

Forecast Wind Shear-Saturday Night

00:00 30-AUG-2015 GMT ©Copyright WSI Corporation <http://www.wsi.com>



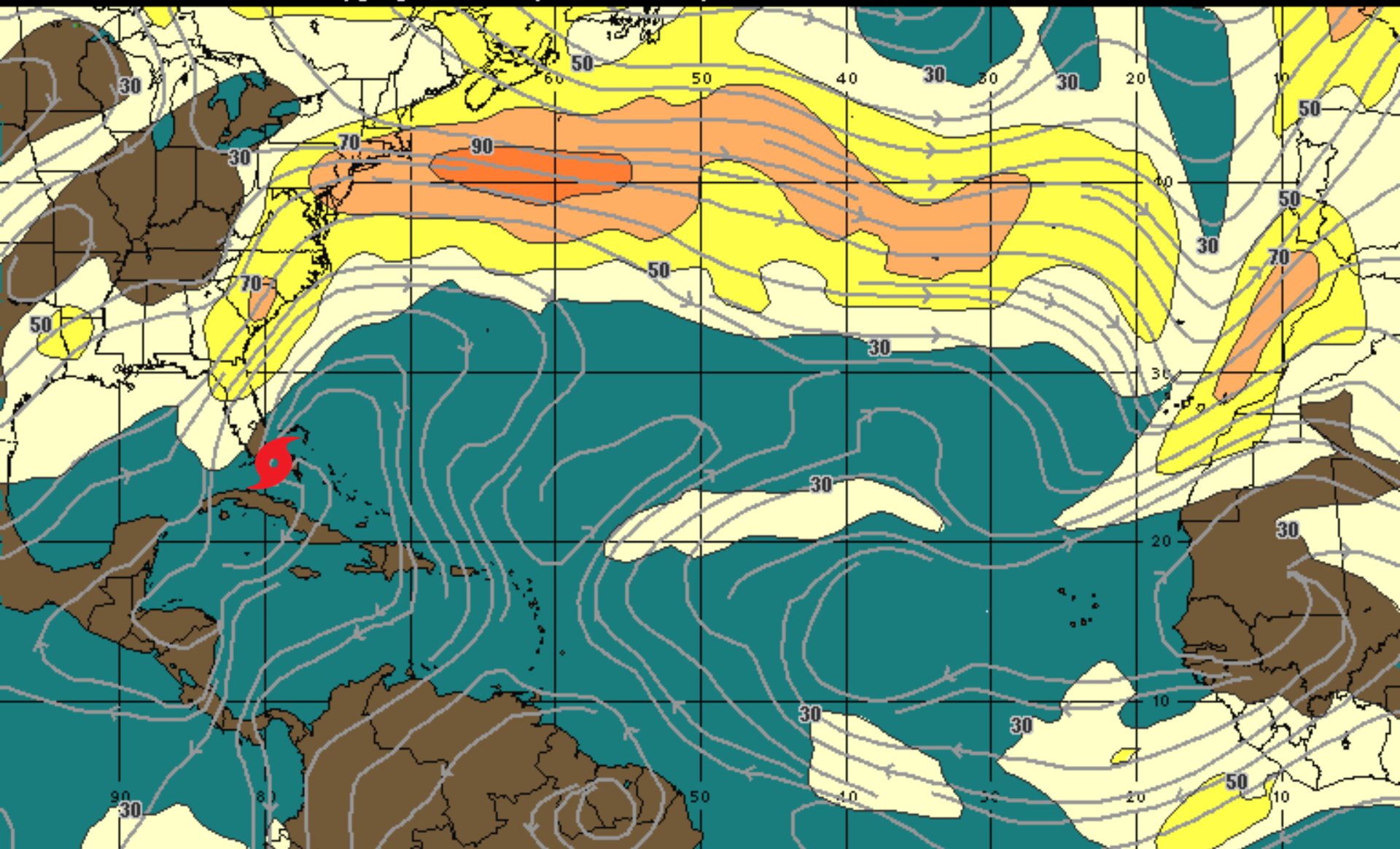
200Mb Wind Speed / Streamline Forecast
Valid 0000 UTC Sun 30-Aug-15

30 mph 50 70 90 110 130 150 +

WSI®

Forecast Wind Shear-Sunday Night

00:00 31-AUG-2015 GMT ©Copyright WSI Corporation <http://www.wsi.com>



200Mb Wind Speed / Streamline Forecast
Valid 0000 UTC Mon 31-Aug-15

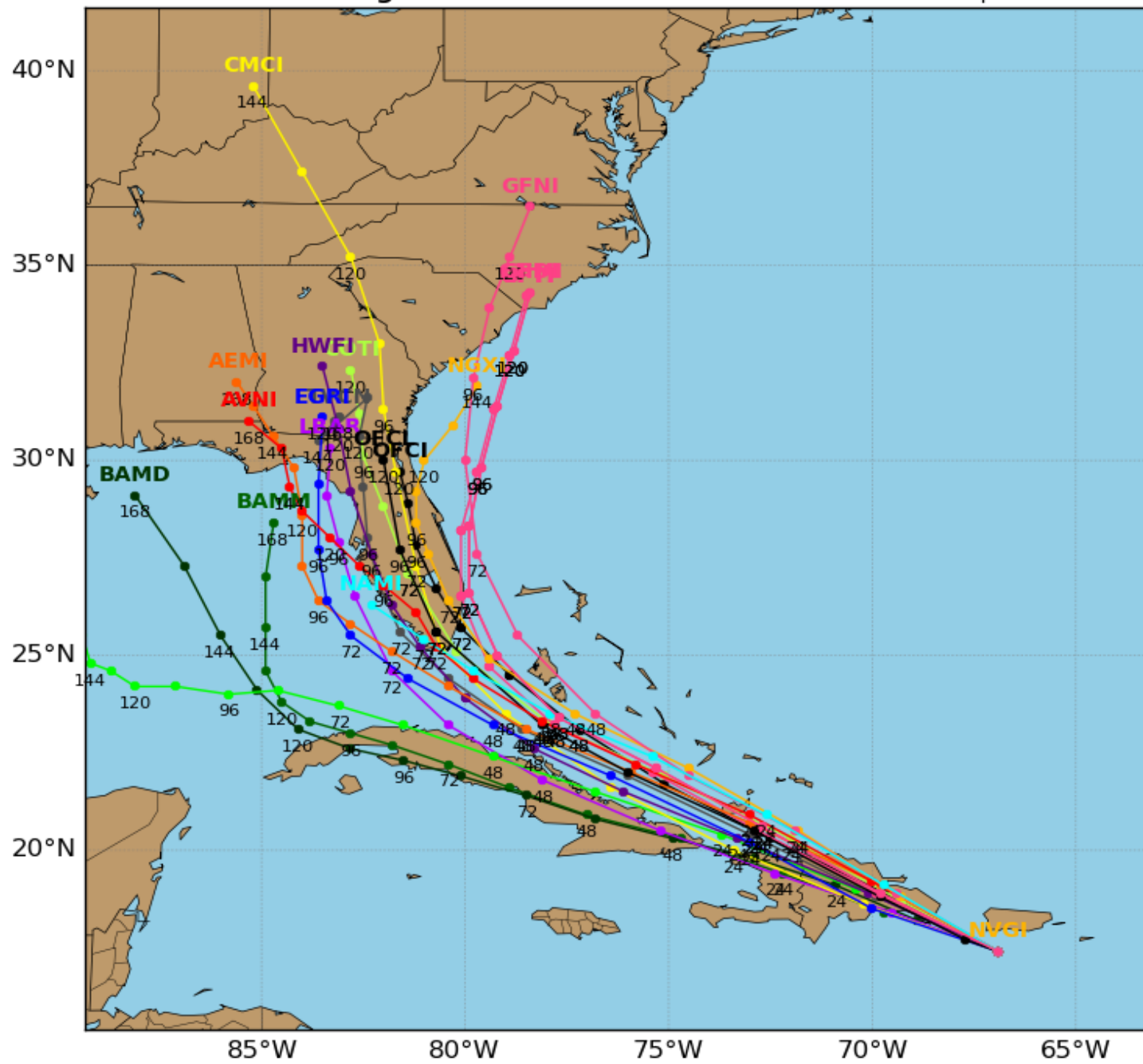
30 mph 50 70 90 110 130 150 +

WSI®

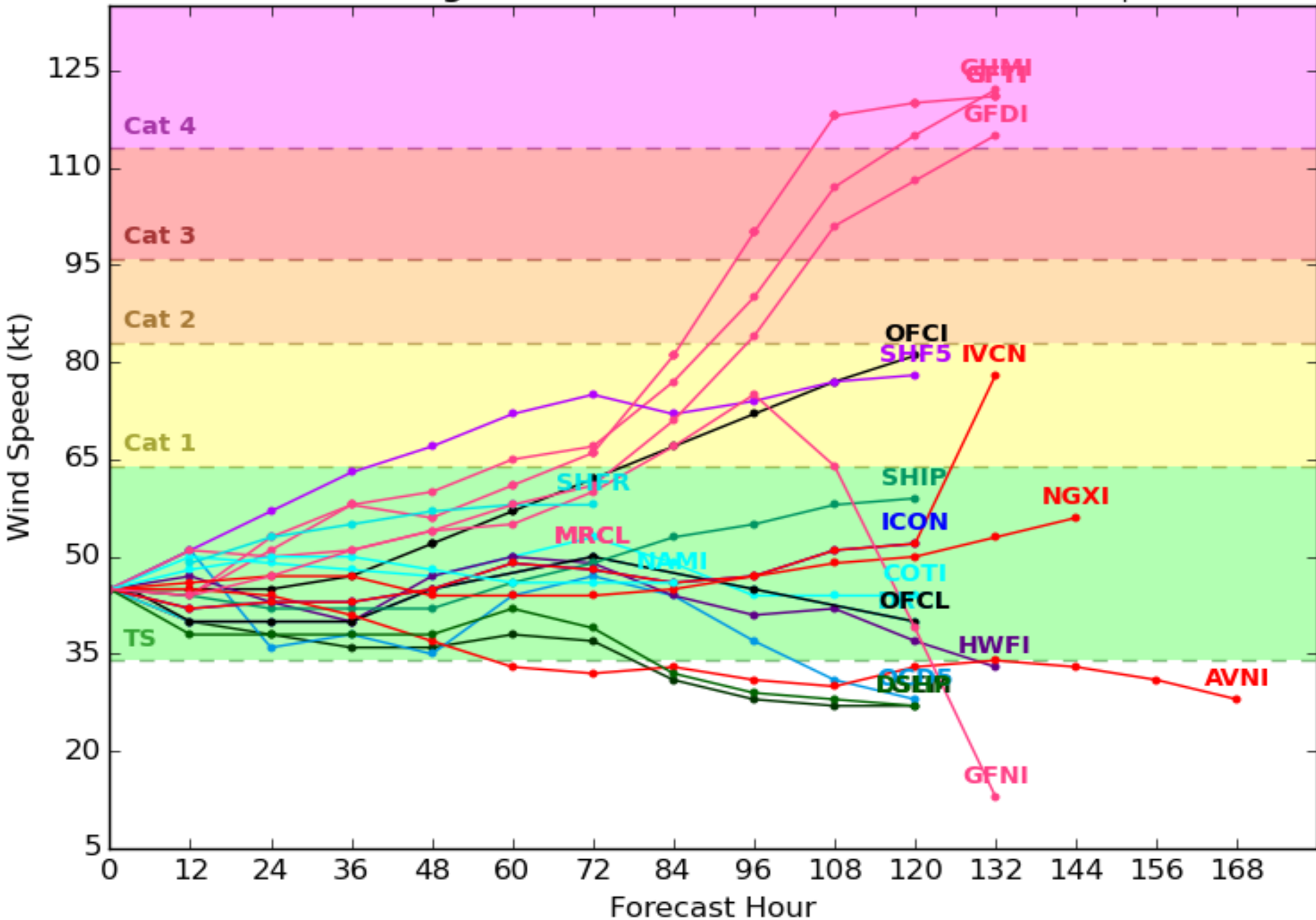
Tropical Storm ERIKA Model Track Guidance

Initialized at 06z Aug 28 2015

Levi Cowan - tropicaltidbits.com



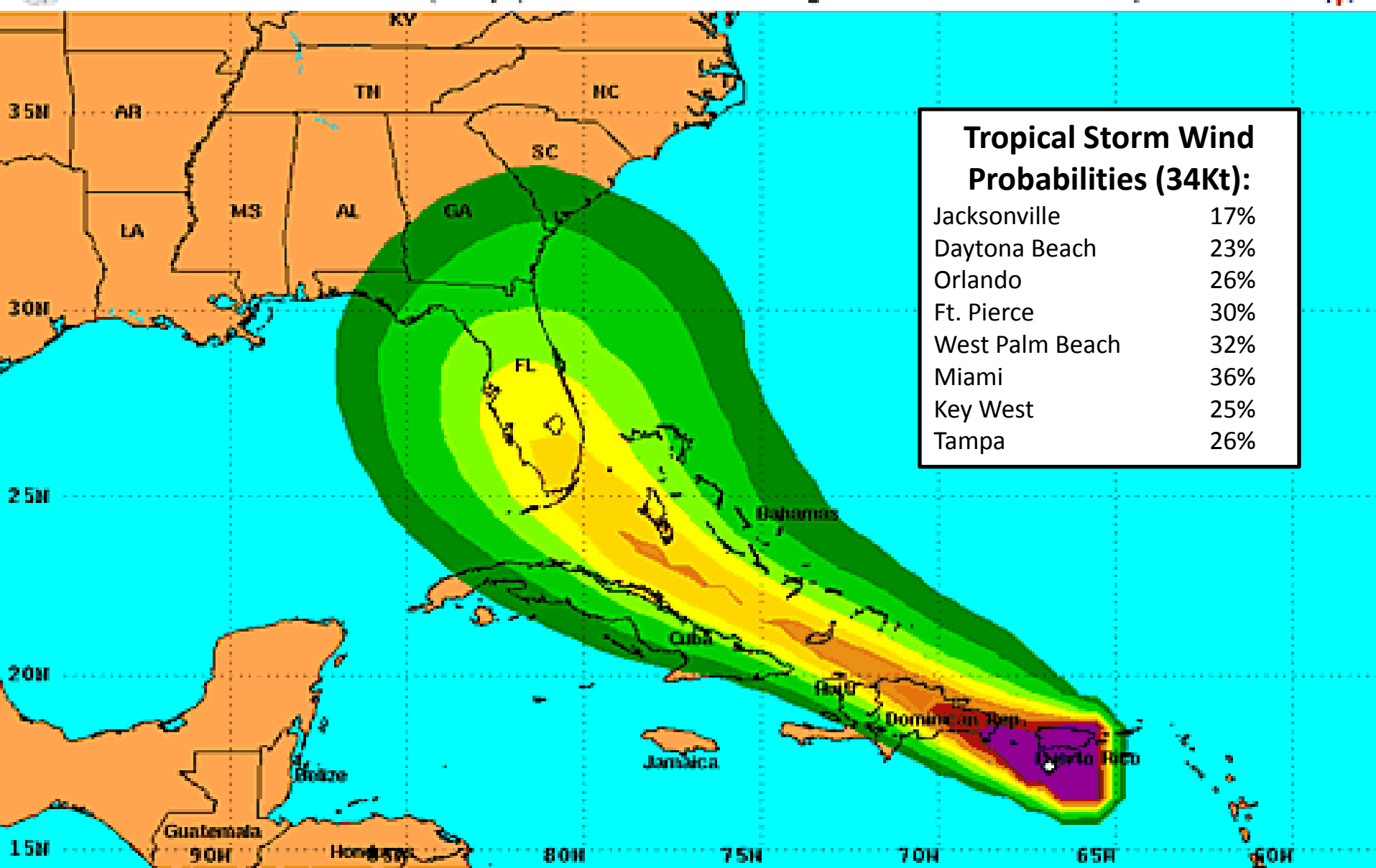
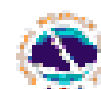
Levi Cowan - tropicaltidbits.com





Tropical Storm Force Wind Speed Probabilities

For the 120 hours (5 days) from 2 AM EDT Fri Aug 28 to 2 AM EDT Wed Sep 2



Probability of tropical storm force surface winds (1-minute average ≥ 39 mph) from all tropical cyclones

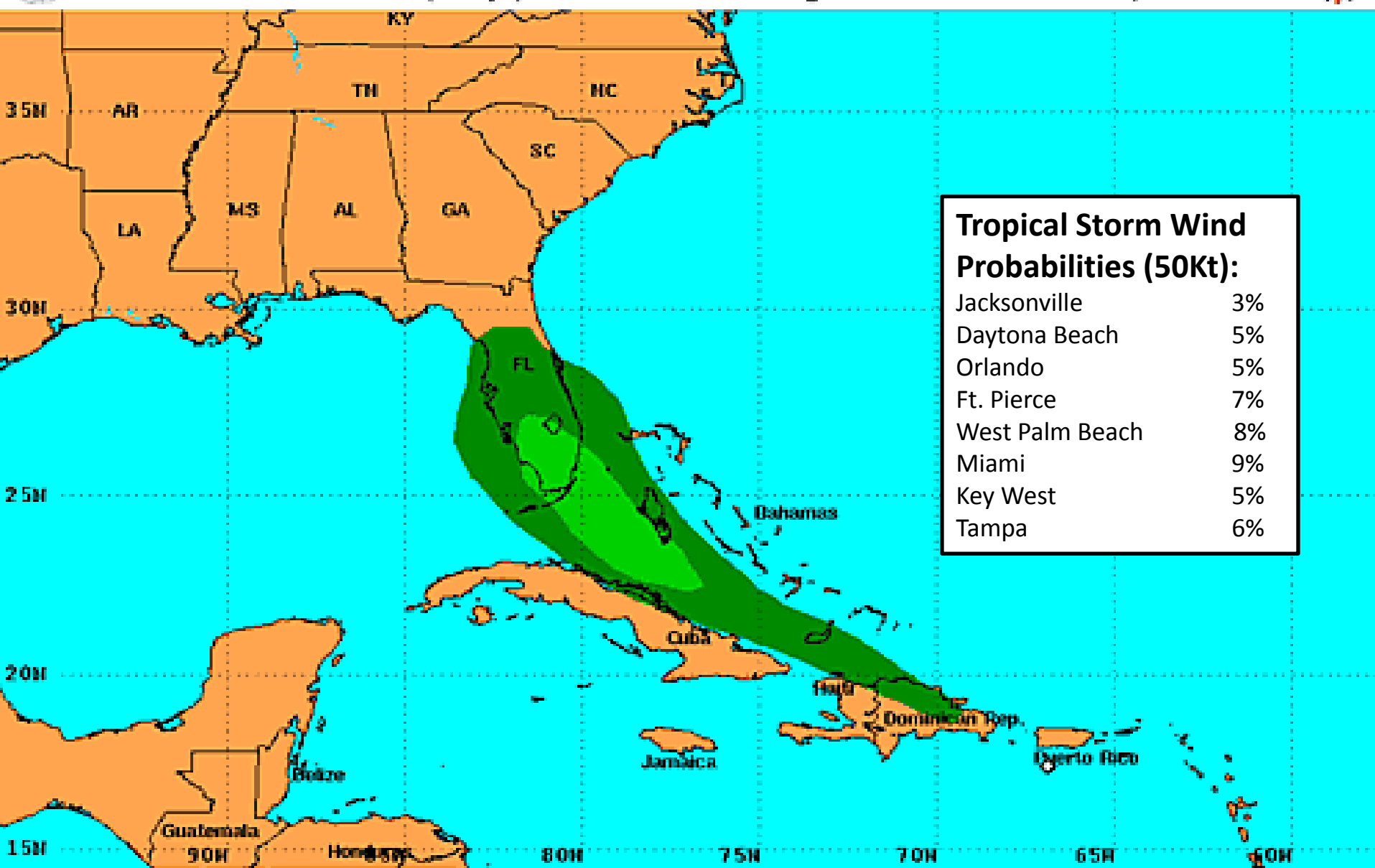
◆ indicates TROPICAL STORM ERIKA center location at 2 AM EDT Fri Aug 28 2015 (Forecast/Advisory #14)





50-knot Wind Speed Probabilities

For the 120 hours (5 days) from 2 AM EDT Fri Aug 28 to 2 AM EDT Wed Sep 2



Tropical Storm Wind Probabilities (50Kt):

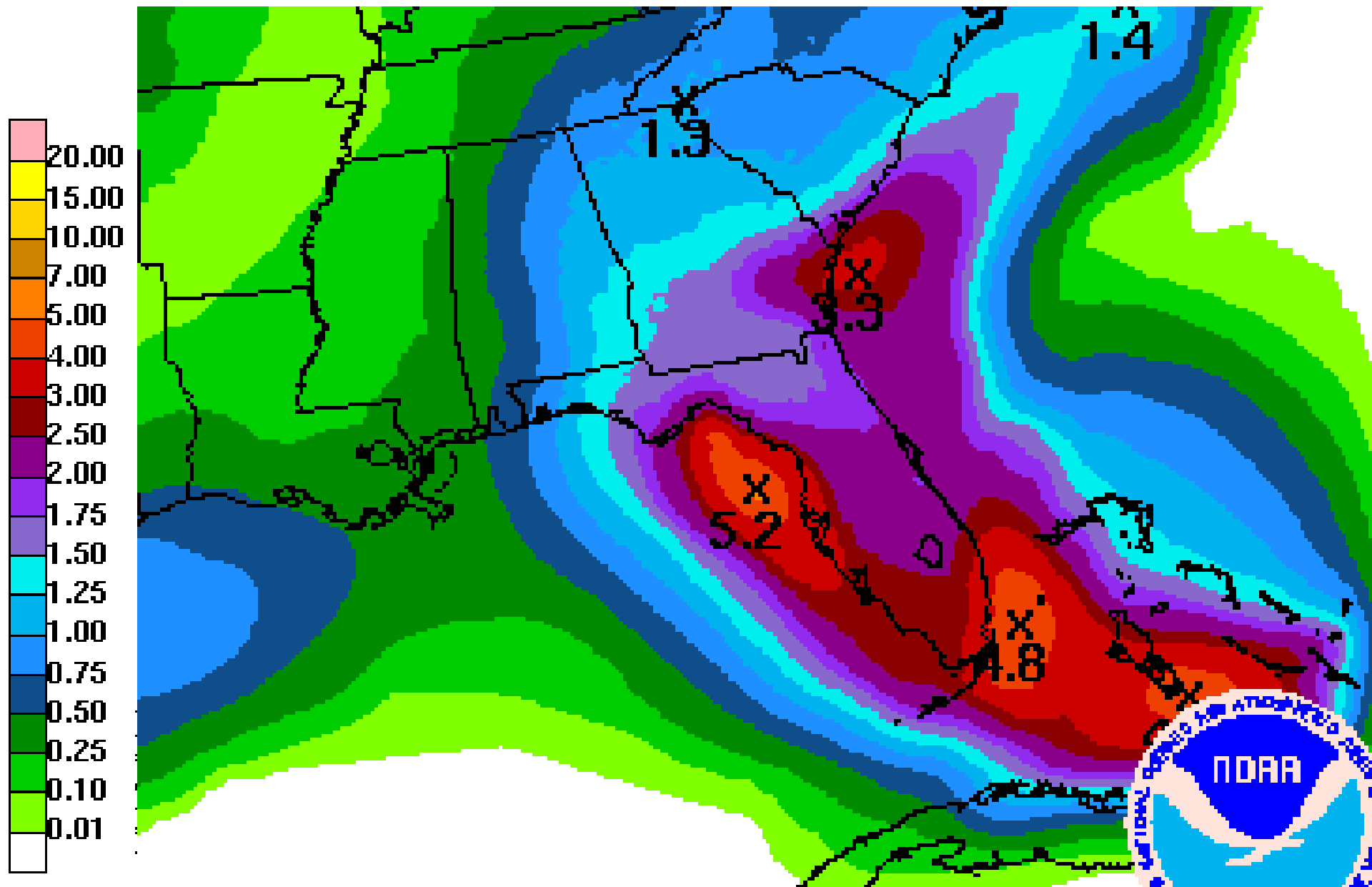
Jacksonville	3%
Daytona Beach	5%
Orlando	5%
Ft. Pierce	7%
West Palm Beach	8%
Miami	9%
Key West	5%
Tampa	6%

Probability of 1-minute average 50-knot (58 mph) or greater surface winds from all tropical cyclones

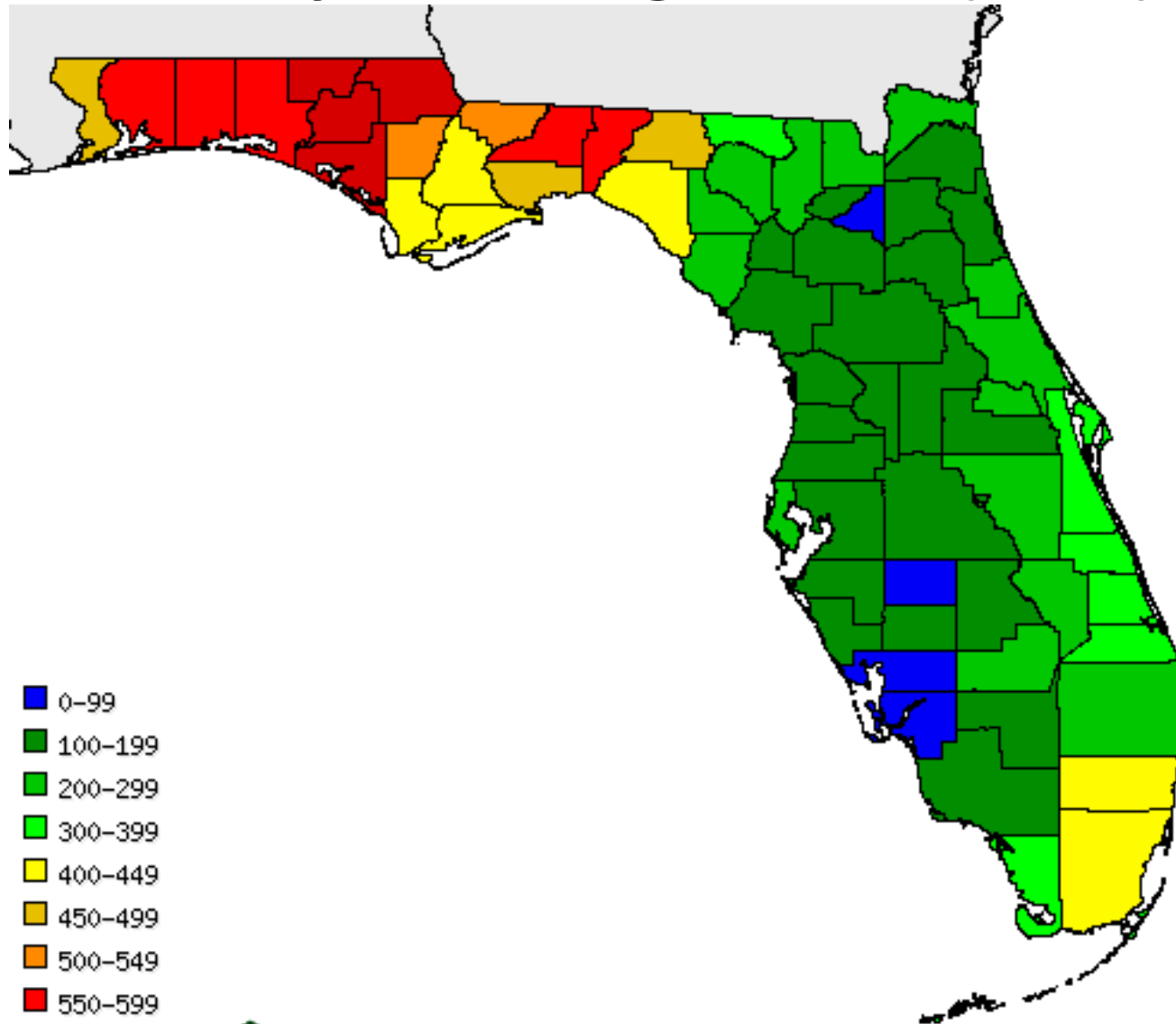
◊ indicates TROPICAL STORM ERIKA center location at 2 AM EDT Fri Aug 28 2015 (Forecast/Advisory #14)



Forecast 7 Day Rainfall Totals



Keetch Byram Drought Index (KBDI)



- 0-99
- 100-199
- 200-299
- 300-399
- 400-449
- 450-499
- 500-549
- 550-599
- 600-649
- 650-699
- 700-749
- 750+



Aug 27 2015

Outlook:

- At 8AM EDT Friday, Tropical Storm Erika was located in the eastern Caribbean Sea 90 miles southeast of Santo Domingo, Dominican Republic, or about 900 miles southeast of Miami.
- Erika is moving towards the west-northwest near 17 mph, and this general motion should continue over the next 48 hours before beginning to turn more northwest on Sunday.
- On this current track, Erika will be near or over Hispaniola today and into the southeastern Bahamas on Saturday.
- Computer models are still somewhat uncertain about Erika's track after the next 36 to 48 hours or so, although the general consensus has shifted slightly westward with the latest model runs, with a range of possibilities between just off the East Coast of Florida to a system in the eastern Gulf of Mexico approaching the Florida Big Bend.
- Maximum sustained winds are near 50mph.
- As Erika continues to move in the Eastern Caribbean Sea, it will encounter unfavorable conditions for at least the next 24 hours.
- Although wind shear and dry air around the storm is beginning to decrease, Erika's interaction with land will help inhibit any strengthening.
- However, if Erika's circulation remains intact as it heads into the southeastern Bahamas on Saturday, it will encounter much more favorable conditions for development and a steady strengthening trend could occur.
- The National Hurricane Center forecast now keeps Erika as a tropical storm through its lifetime. However, there is still a small chance of it becoming a hurricane.

Florida Outlook:

- The entire Florida Peninsula and eastern Florida Panhandle is within the 5 day forecast cone, with South Florida now within the 3 day forecast cone.
- Some areas of Southeast Florida now have between a 40% and 50% chance of experiencing tropical storm force winds at some point over the next 5 days. Other areas south of the I-4 corridor have a 30%-40% chance of experiencing tropical storm force winds.
- It is important when looking at these probability graphics to not focus on the number, but rather the trends as new products become available. The probability of tropical storm force winds across the Peninsula have been increasing with each advisory.
- Tropical Storm Watches could be issued as early as tonight for portions of South Florida.
- Given the uncertainty in the forecast in the 3 to 5 day range, it is very difficult to determine exact impacts to Florida.
- Heavy rainfall is an increasing threat, especially for flood prone areas of West Central Florida.
- In addition, high surf and waves along the Florida East Coast this weekend could cause minor coastal flooding and beach erosion.



TROPICAL UPDATE

Created by:

Molly Merrifield, Assistant State Meteorologist

Molly.Merrifield@em.myflorida.com

State Meteorological Support Unit

Florida Division of Emergency
Management