



TROPICAL UPDATE

8 AM EDT

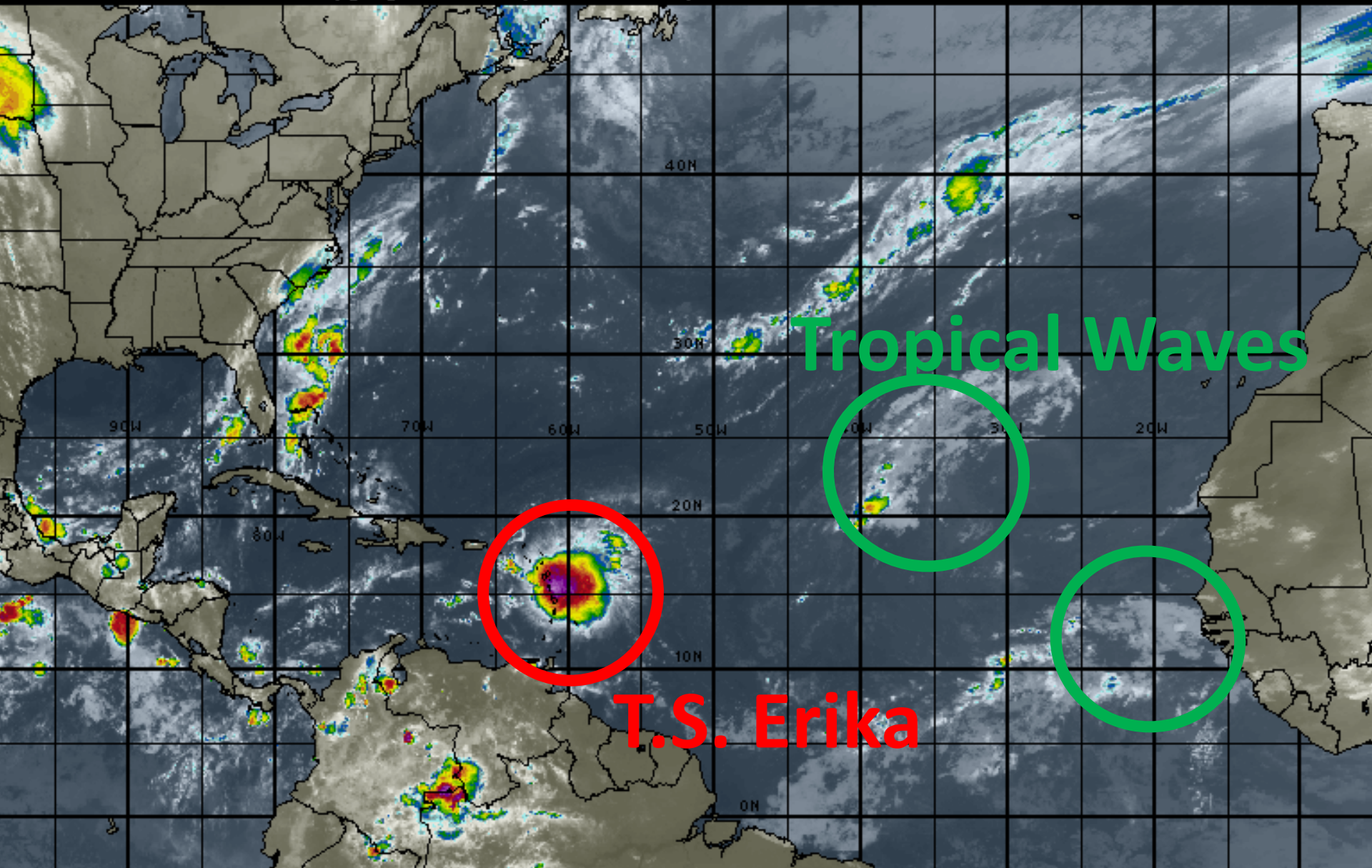
Thursday, August 27, 2015

Tropical Storm Erika

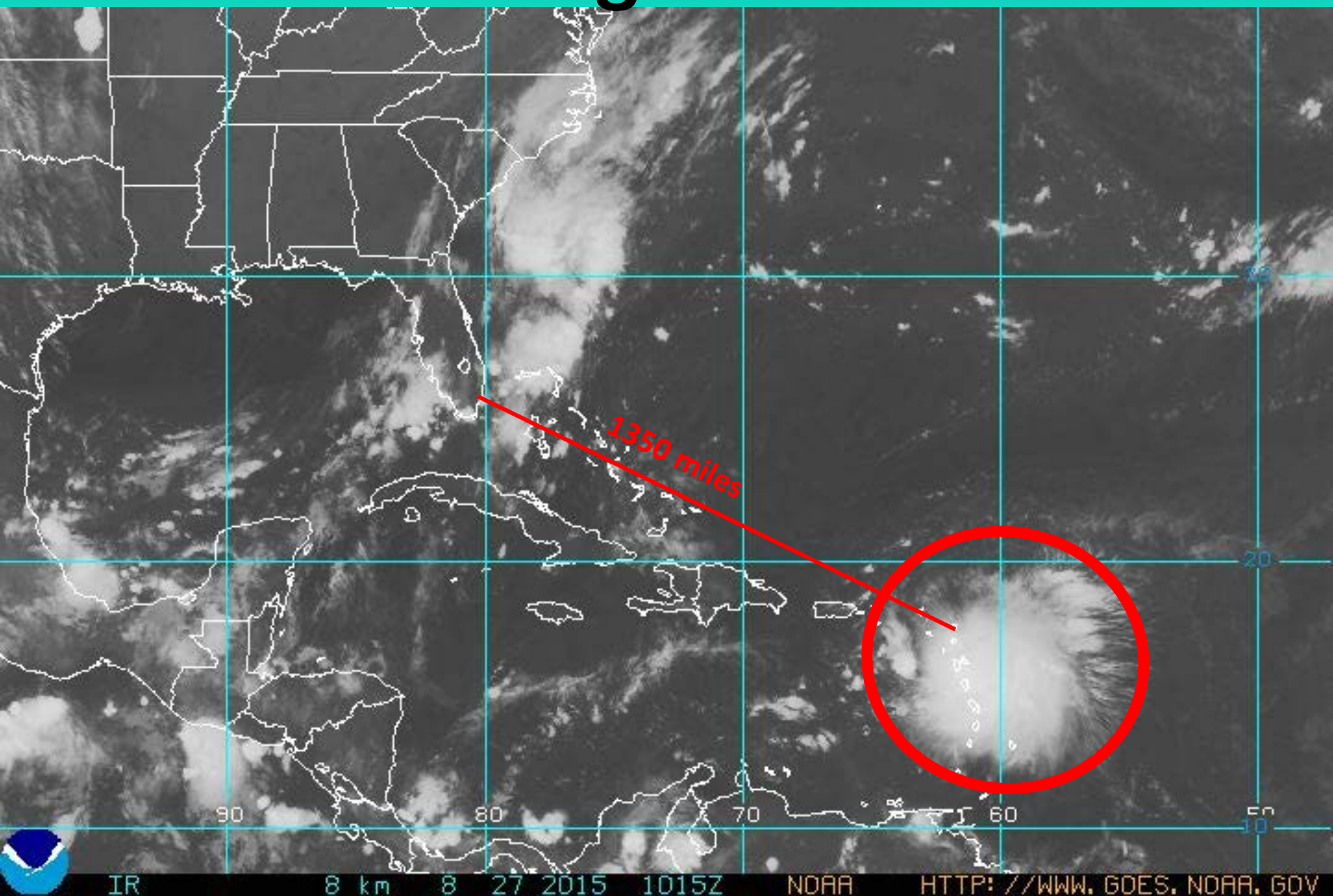
This update is intended for government and emergency response officials, and is provided for informational and situational awareness purposes only. Forecast conditions are subject to change based on a variety of environmental factors. For additional information, or for any life safety concerns with an active weather event please contact your County Emergency Management or Public Safety Office, local National Weather Service forecast office or visit the National Hurricane Center website at www.nhc.noaa.gov.

Atlantic Basin Satellite Image

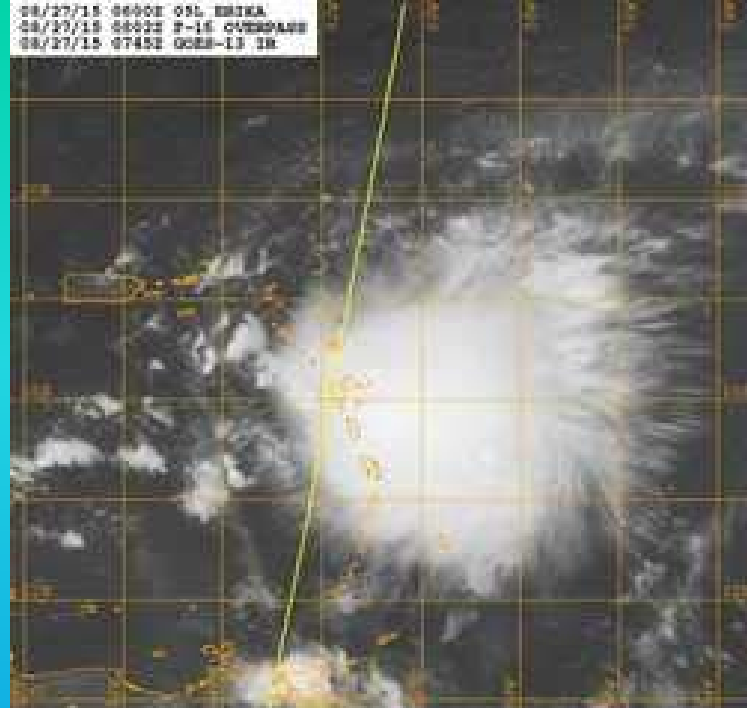
09:00 27-AUG-2015 GMT ©Copyright MSI Corporation <http://www.wsi.com>



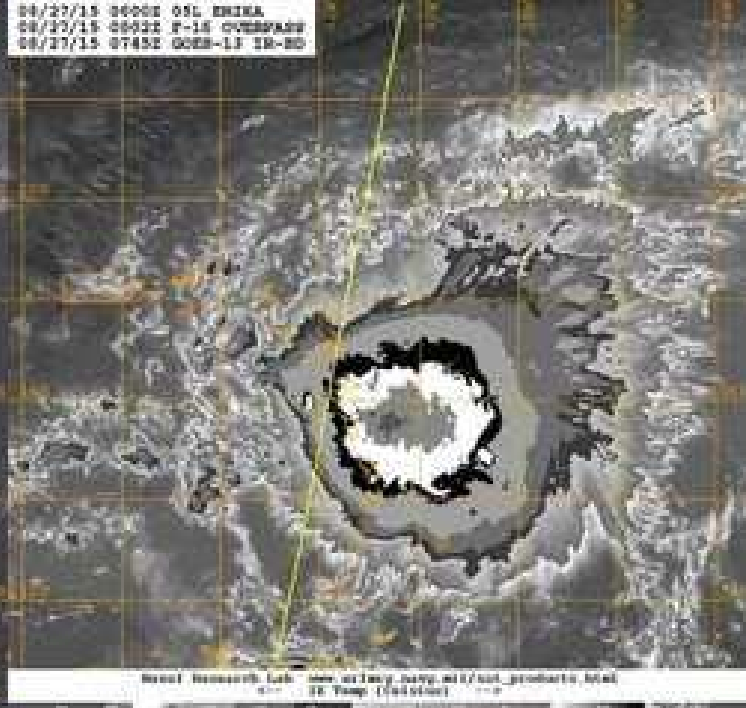
Satellite Images of T.S. Erika



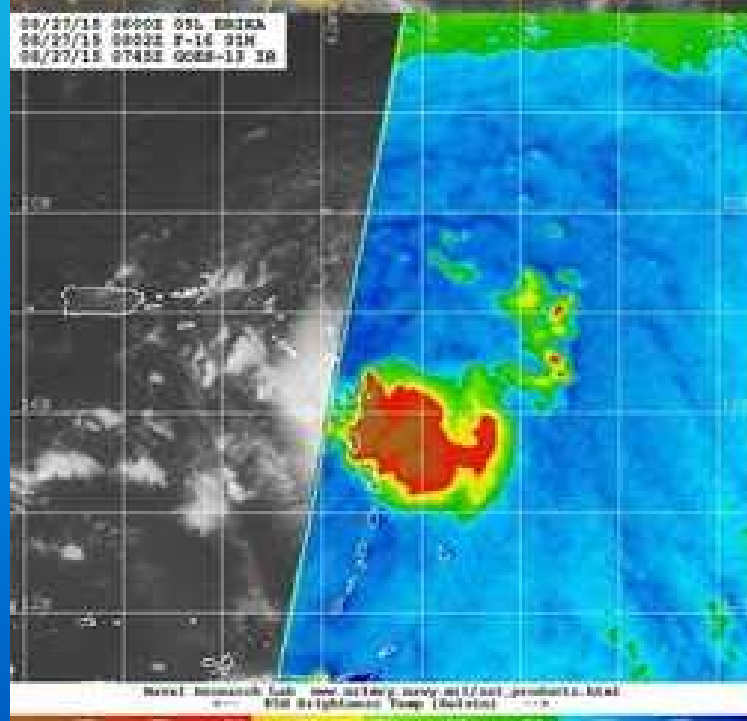
08/27/15 0600Z OSL ERIKA
08/27/15 0600Z F-15 OVERPASS
08/27/15 0745Z GOES-13 IR



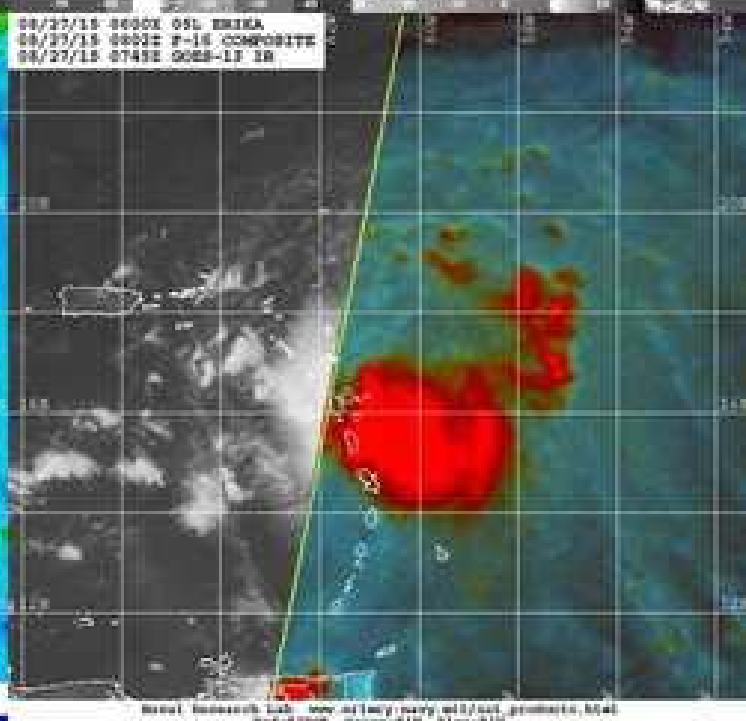
08/27/15 0600Z OSL ERIKA
08/27/15 0600Z F-15 OVERPASS
08/27/15 0745Z GOES-13 IR-ND



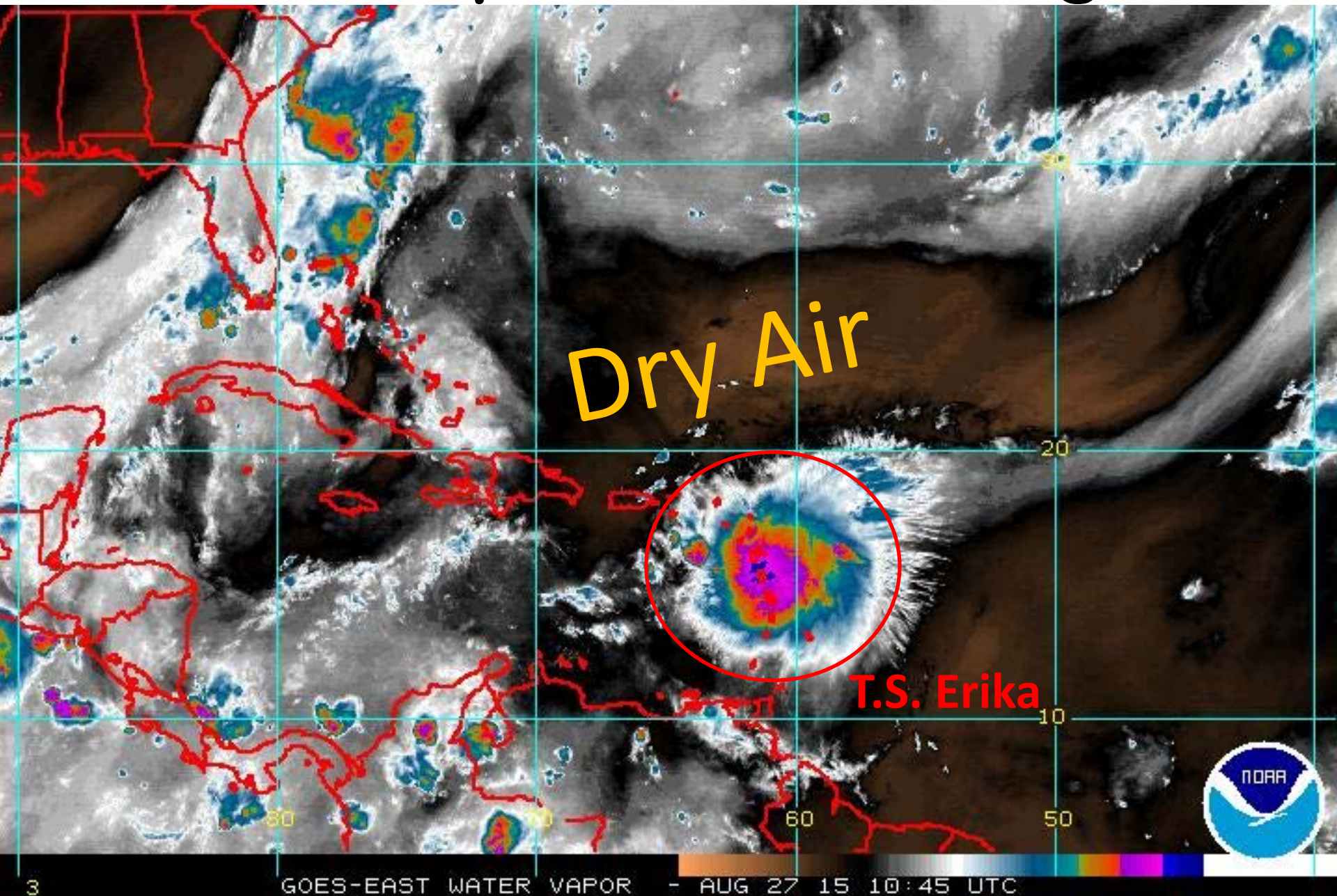
08/27/15 0600Z OSL ERIKA
08/27/15 0600Z F-15 91H
08/27/15 0745Z GOES-13 IR



08/27/15 0600Z OSL ERIKA
08/27/15 0600Z F-15 COMPOSITE
08/27/15 0745Z GOES-13 IR



Water Vapor Satellite Image



Tropical Storm Erika

5 AM EDT Thu Aug 27 2015

Position 16.8 N 61.5 W

Maximum Winds 50 mph

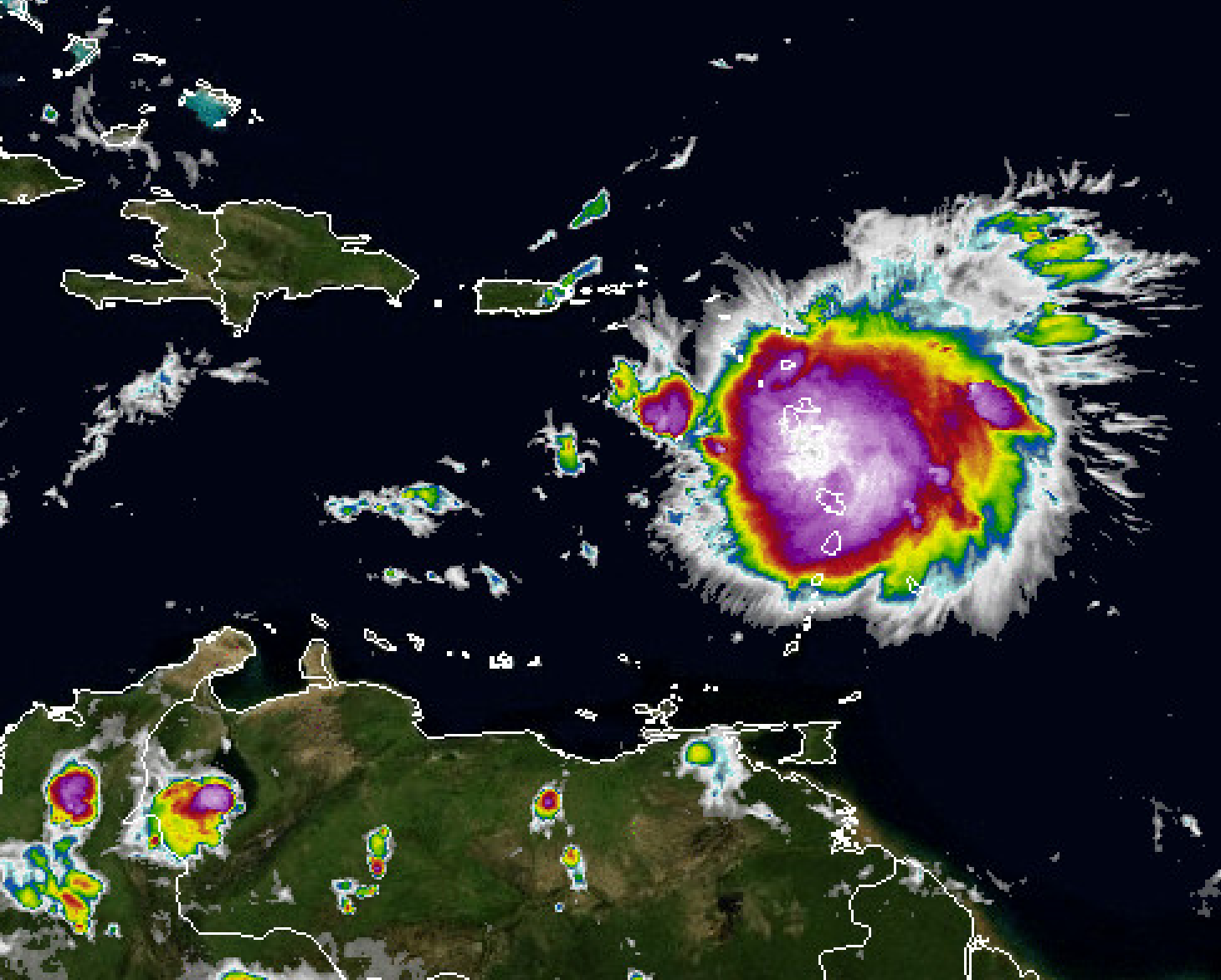
Gusts 65 mph

Movement W at 16 mph

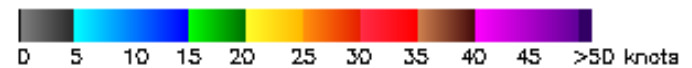
Minimum Pressure 1003 mb (29.61 inches)

Blue Marble basemap imagery courtesy NASA

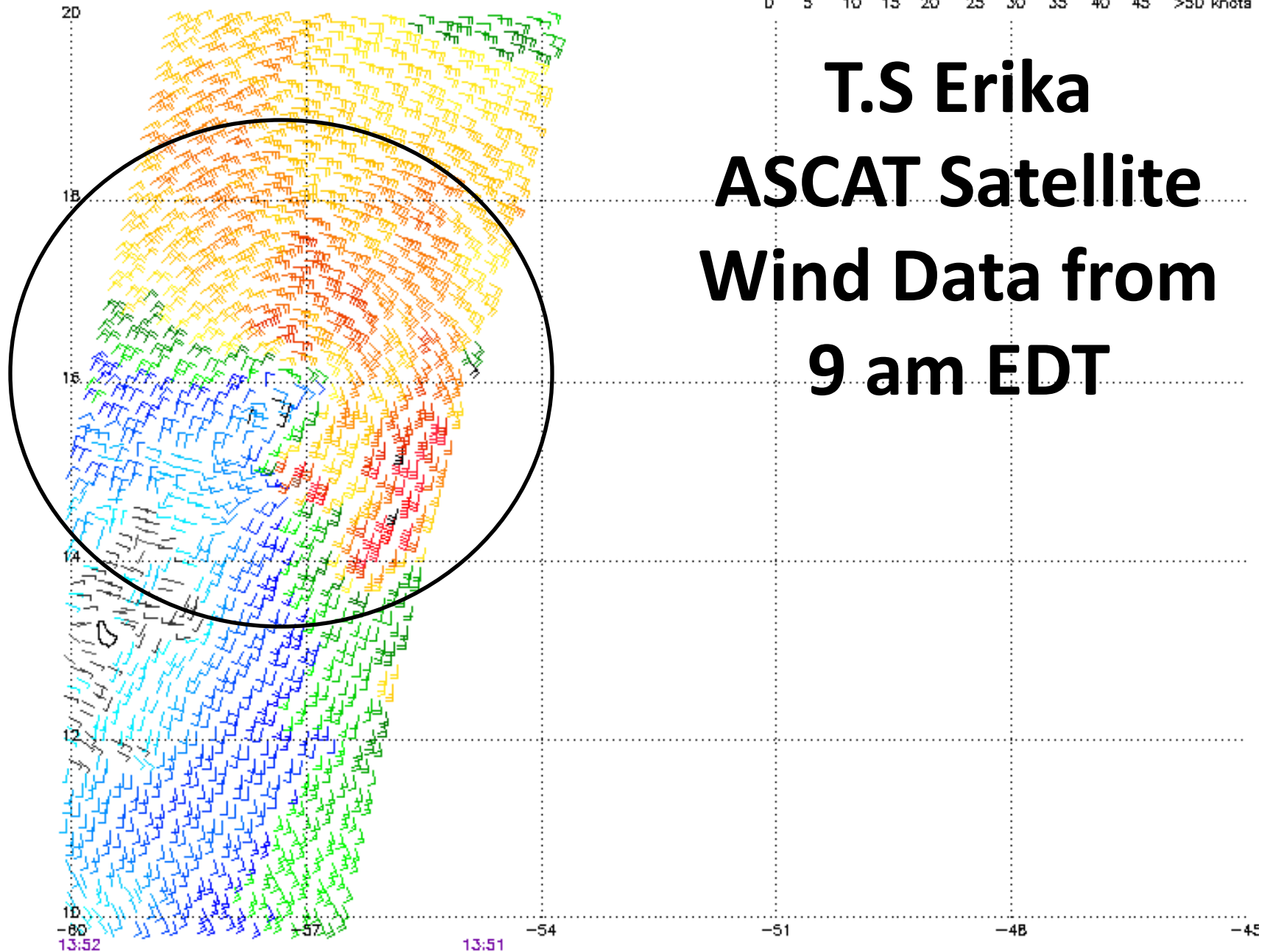
Satellite 11:16 AM UTC
7:16 AM EDT



ASCAT 25KM NOAA Winds Aug 27 11:02 UTC 2015 descending

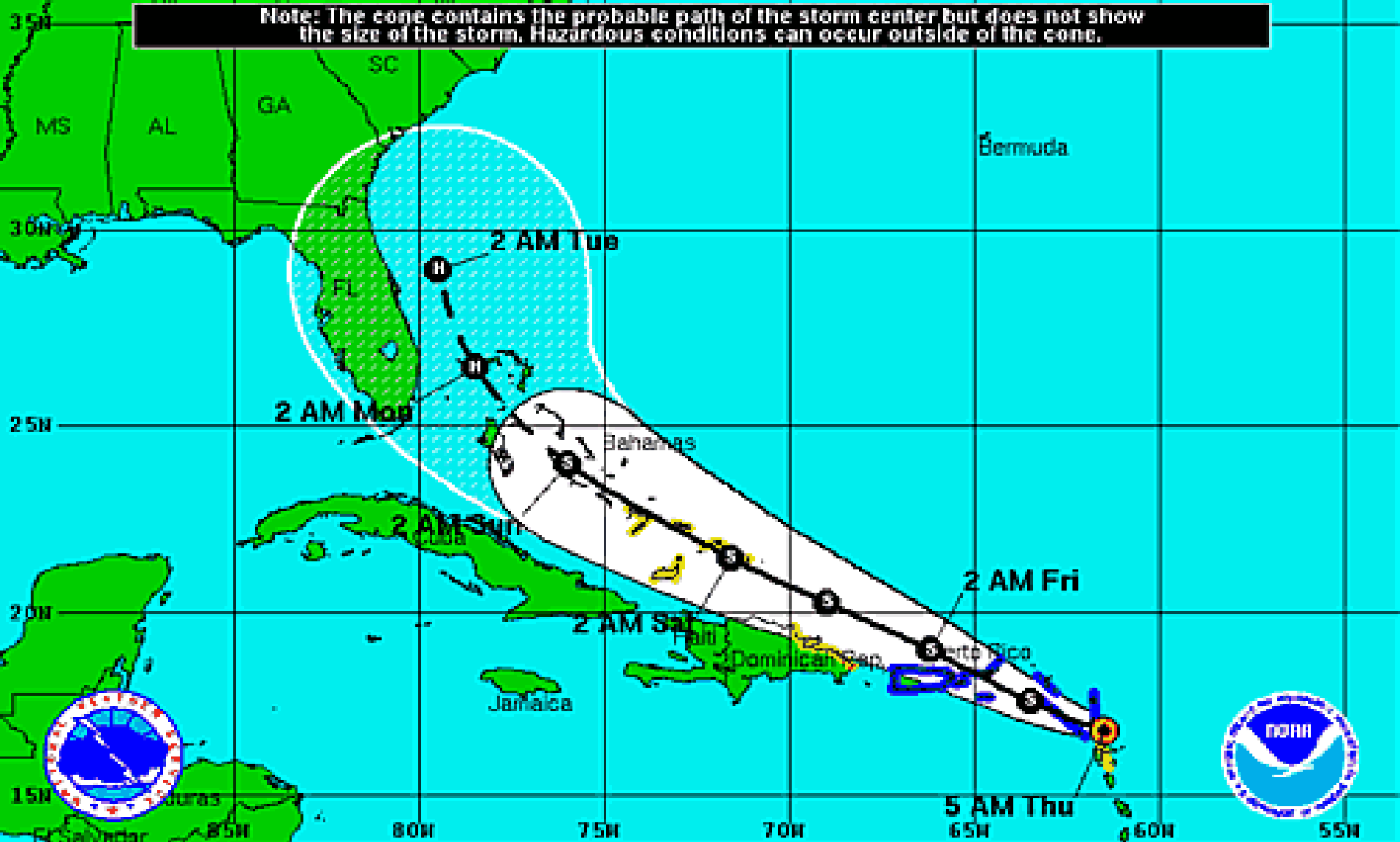


T.S Erika ASCAT Satellite Wind Data from 9 am EDT



Note: 1) Times are GMT 2) Times along bottom correspond to measurement at 15N
3) Data buffer is 22 hrs from Aug 27 11:02 UTC 2015 4) Black wind bars indicate possible contamination
NOAA/NESDIS/Center for Satellite Applications and Research

Note: The cone contains the probable path of the storm center but does not show the size of the storm. Hazardous conditions can occur outside of the cone.



Tropical Storm Erika
 Thursday August 27, 2015
 5 AM EDT Advisory 10
 NWS National Hurricane Center

Current Information:
 Center Location 16.8 N 61.5 W
 Max Sustained Wind 50 mph
 Movement W at 16 mph

Forecast Positions:
 Tropical Cyclone Post-Tropical
 Sustained Winds: D < 39 mph
 S 39-73 mph H 74-110 mph M > 110mph

Potential Track Area:

Day 1-3 Day 4-5

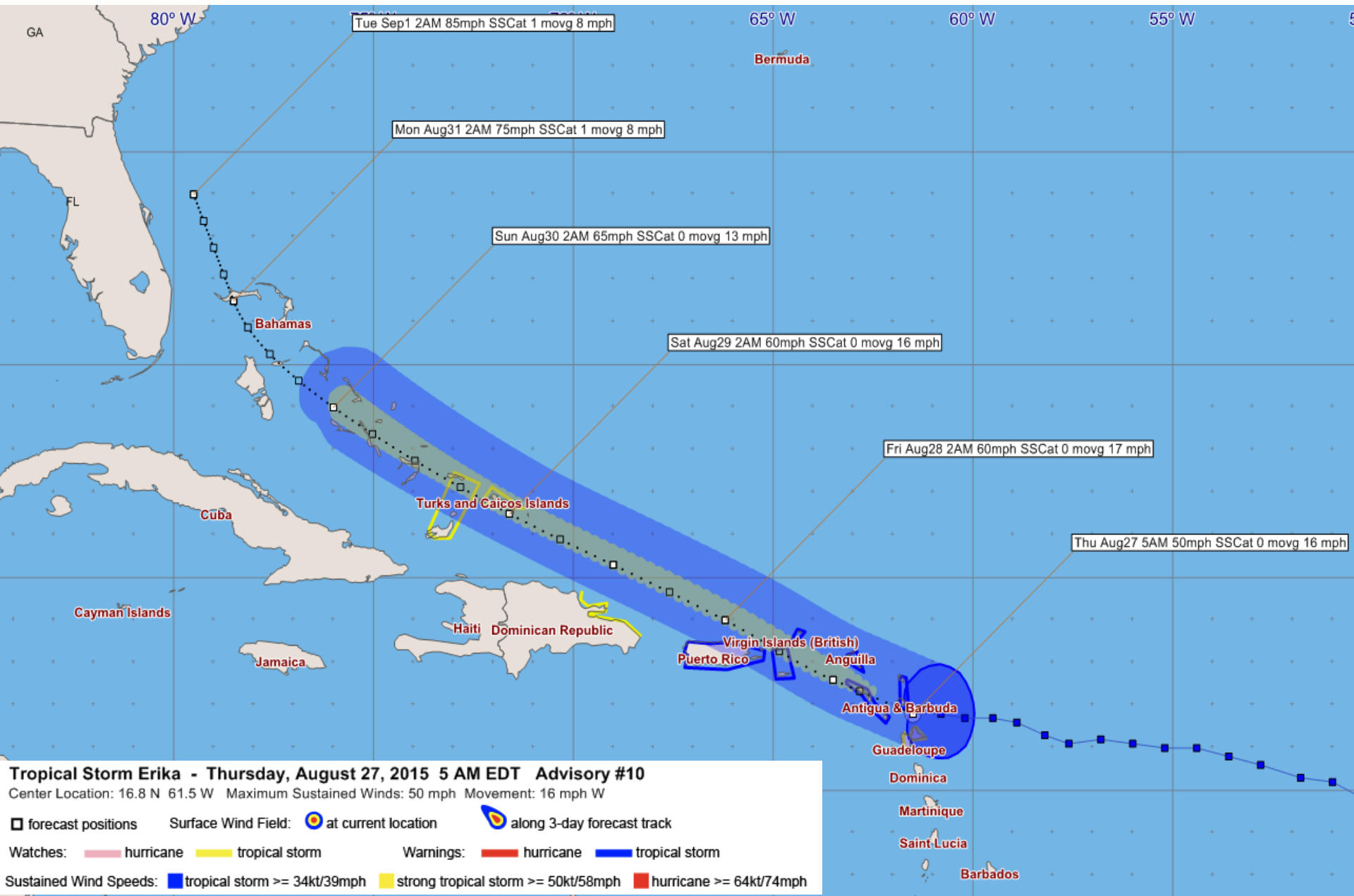
Watches:

Hurricane Trop.Storm

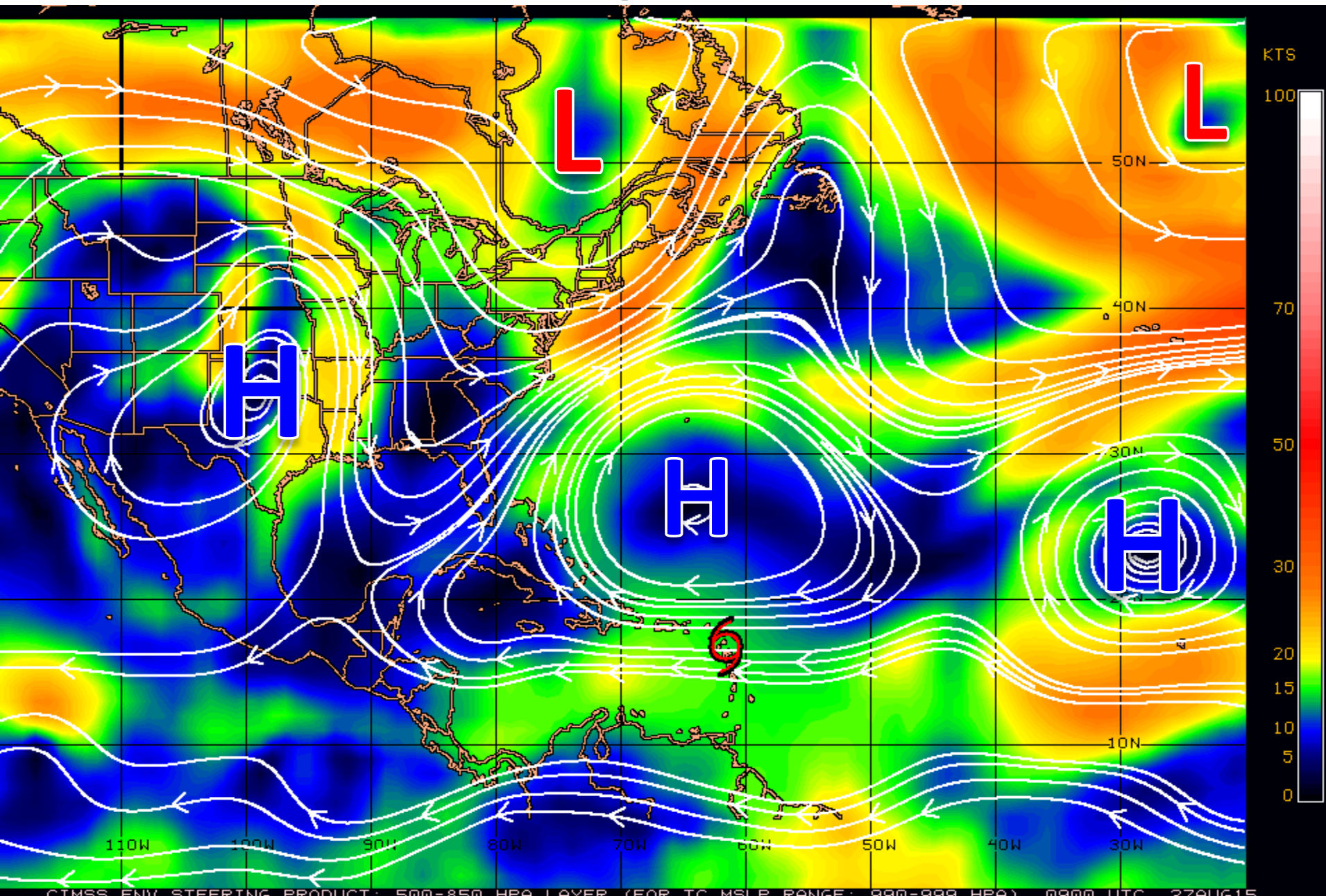
Warnings:

Hurricane Trop.Storm

3 Day Wind Swath and NHC Forecast Track



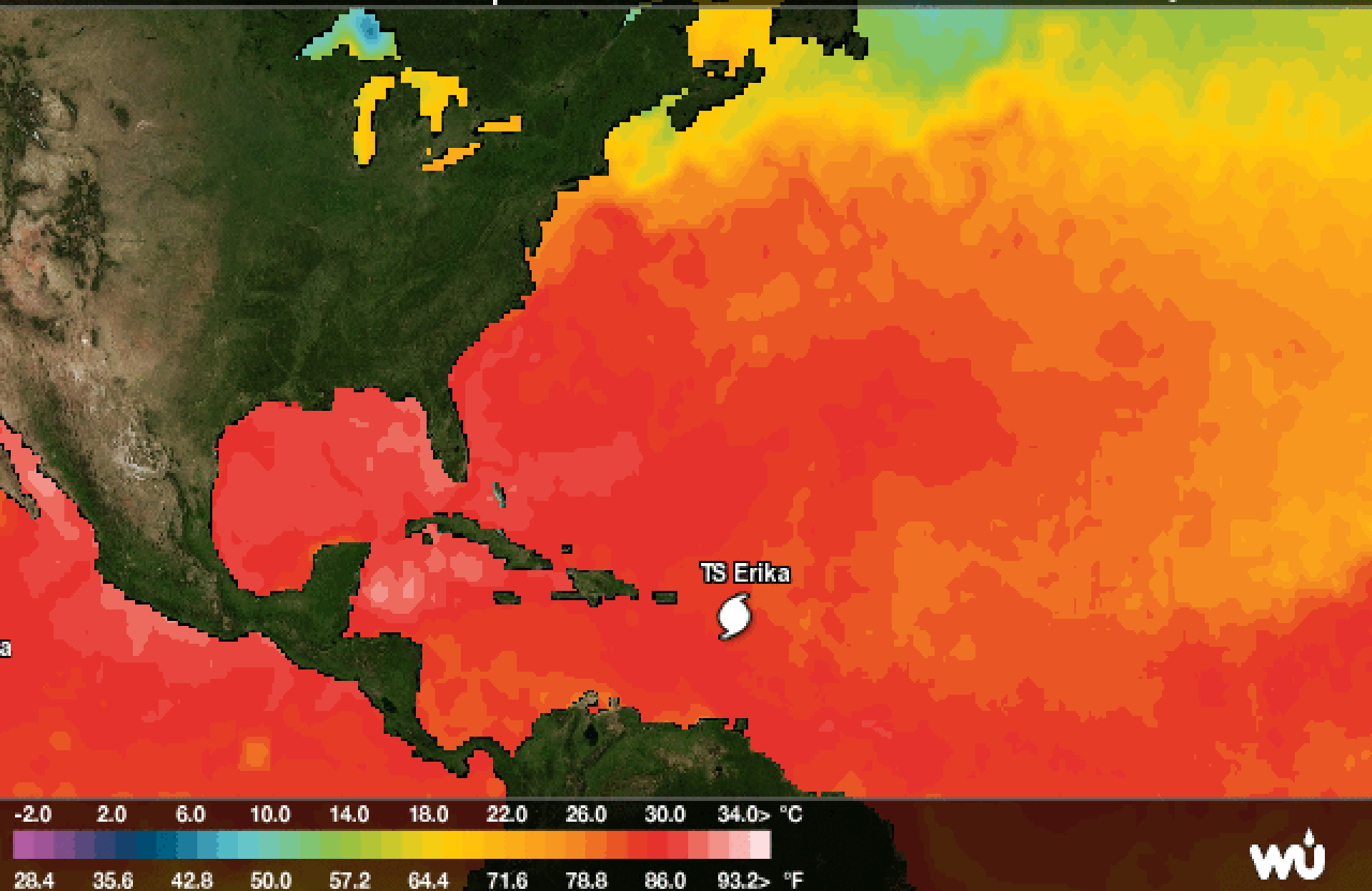
Steering Currents



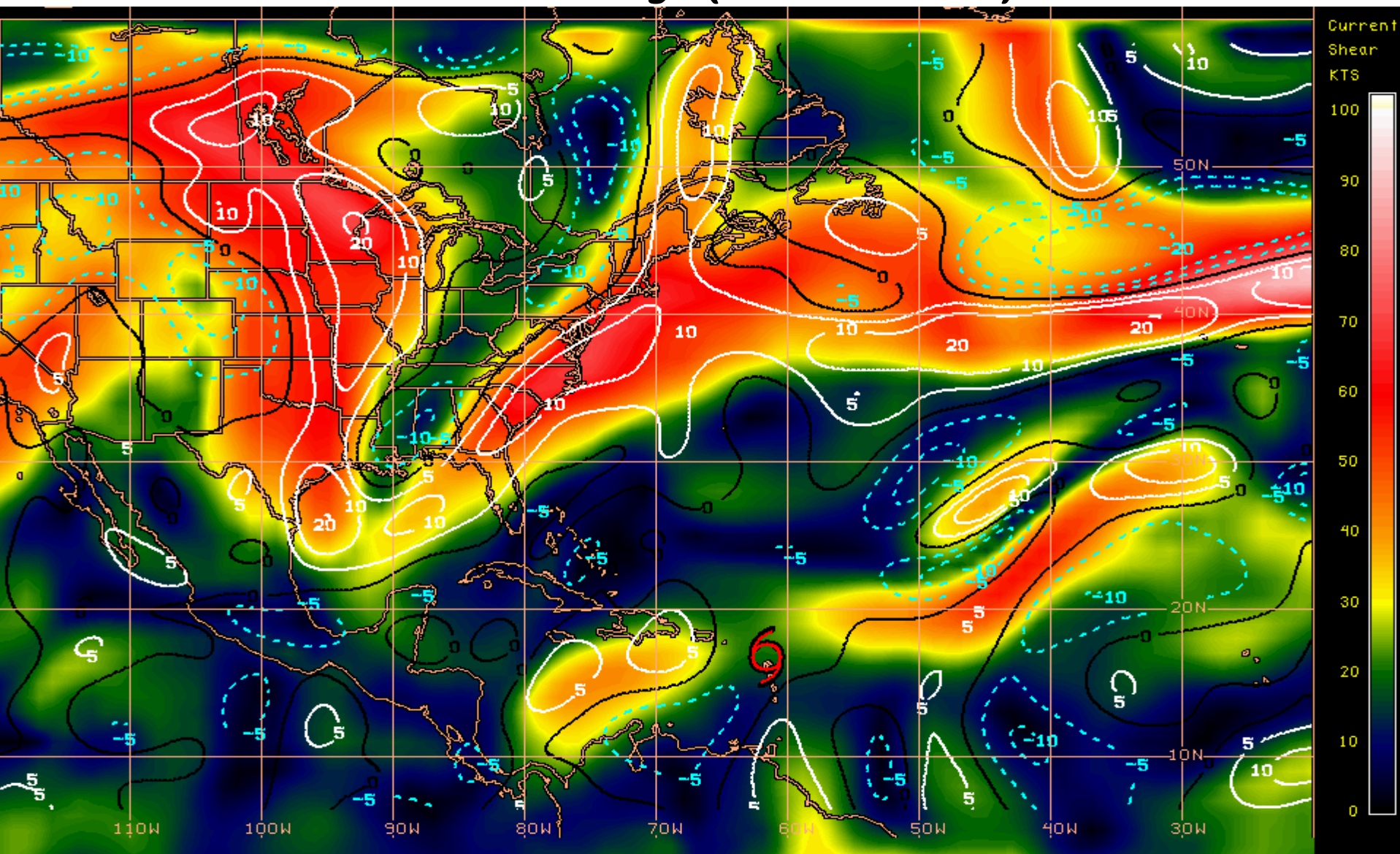
Sea Surface Temperatures Near T.S. Erika

Northern Atlantic Sea Surface Temperature

Generated Thu Aug 27 07:30 EDT 2015



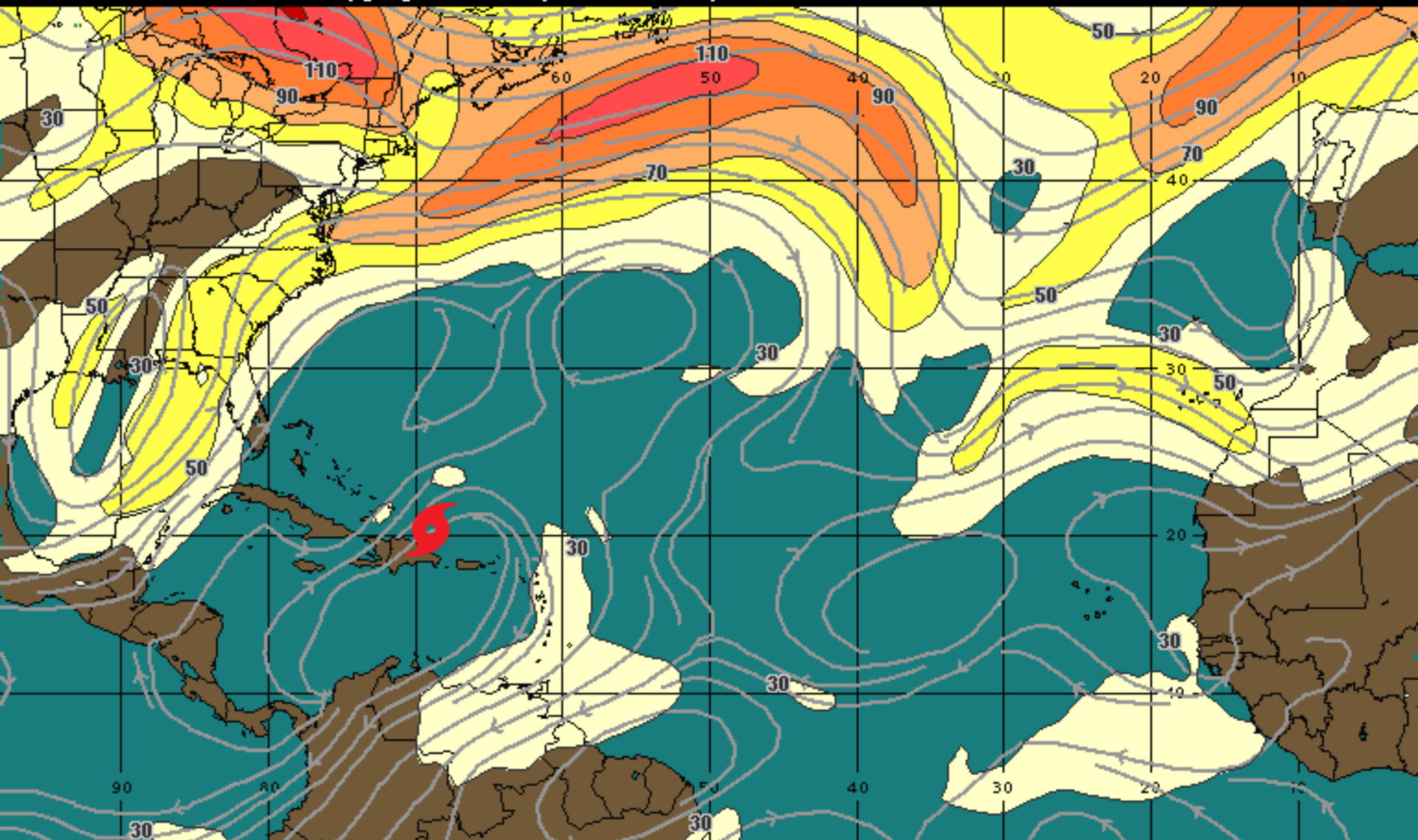
Current Wind Shear (shaded) and Shear Tendency (contours)



Shear Tendency (KTS) Over Past 24 Hours: Increasing ——— Decreasing - - - -

Forecast Wind Shear-Friday Night

00:00 29-AUG-2015 GMT ©Copyright WSI Corporation <http://www.wsi.com>



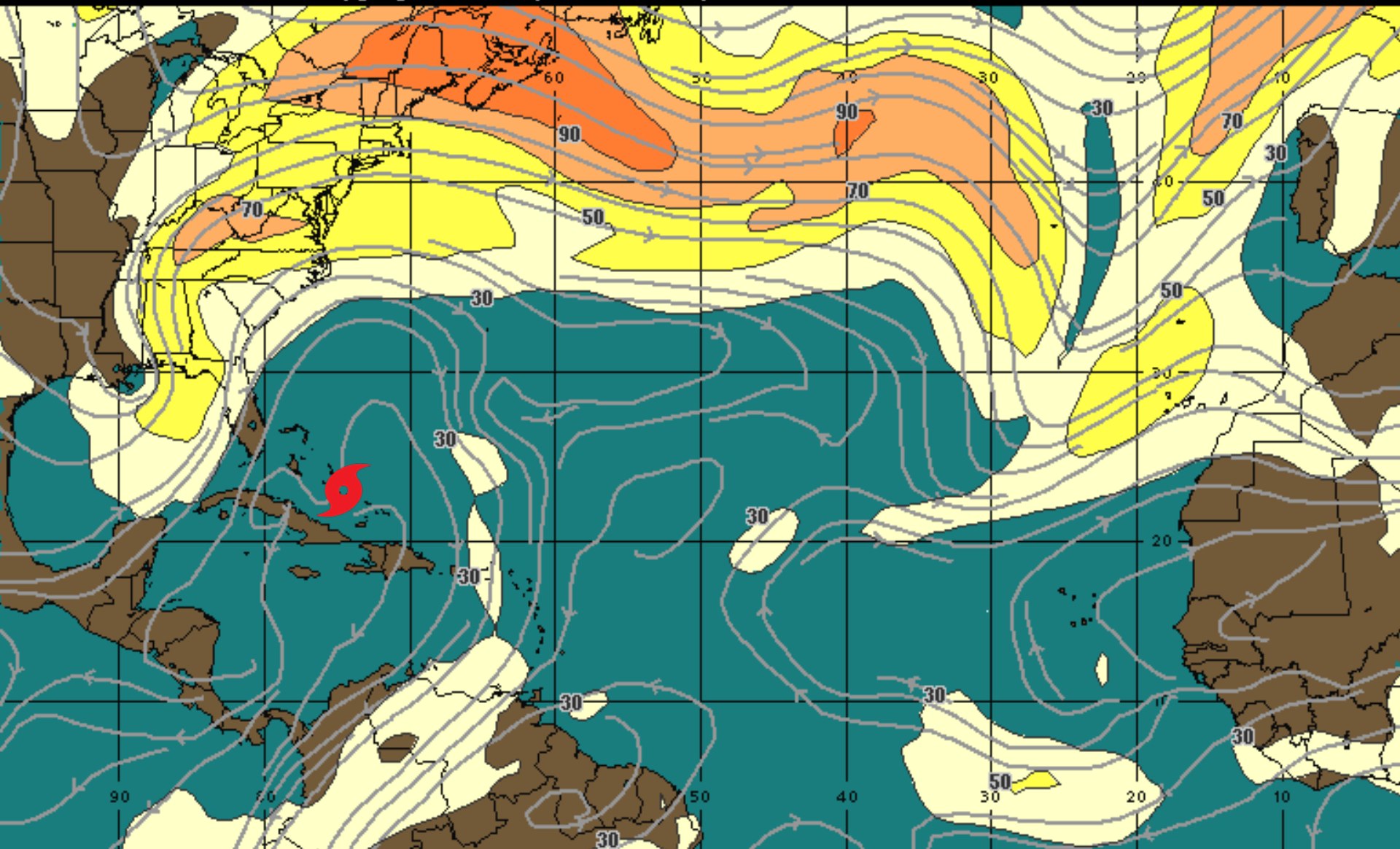
200Mb Wind Speed / Streamline Forecast
Valid 0000 UTC Sat 29-Aug-15

30 mph 50 70 90 110 130 150 +

WSI®

Forecast Wind Shear-Saturday Night

00:00 30-AUG-2015 GMT ©Copyright WSI Corporation <http://www.wsi.com>

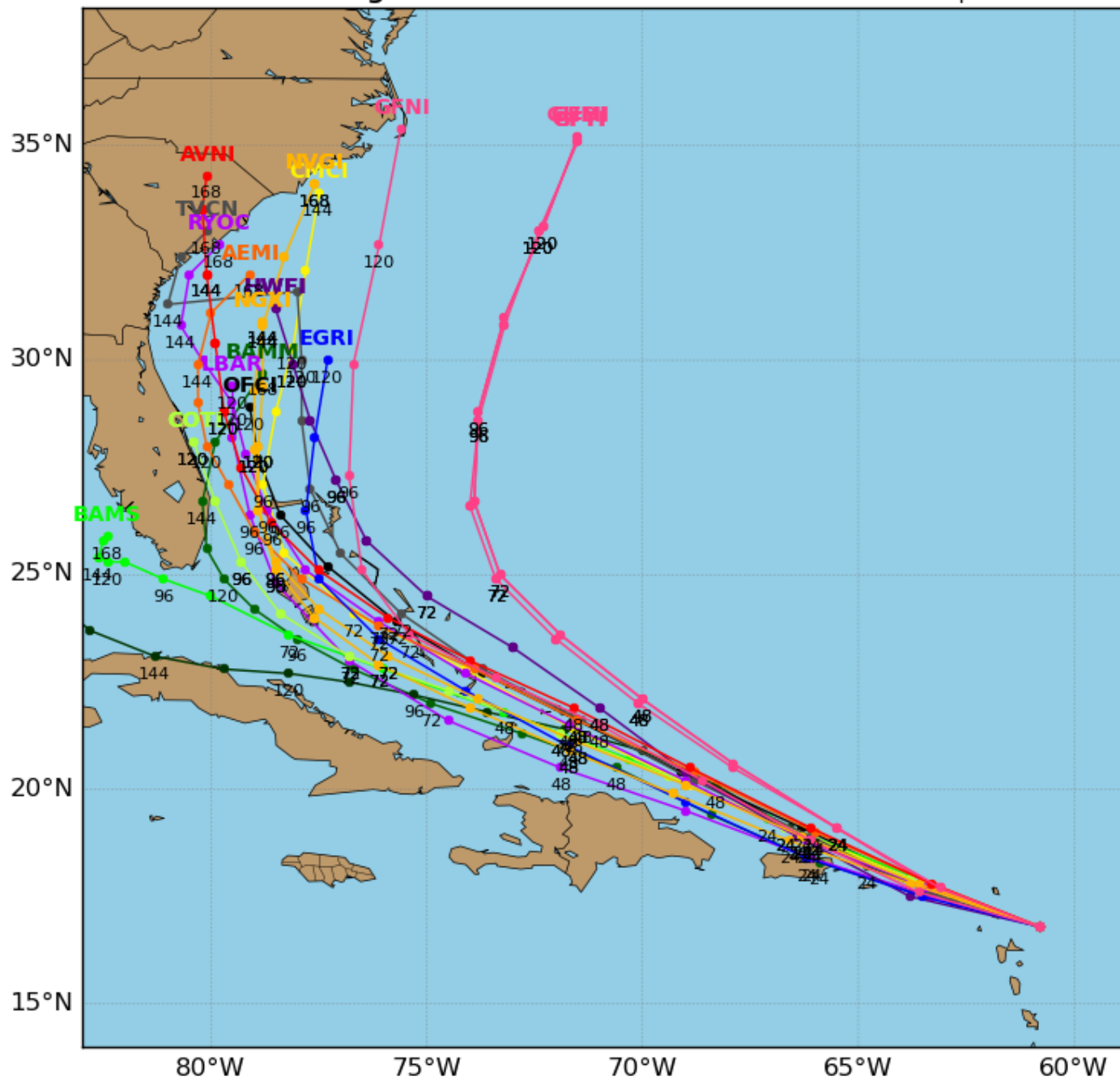


200Mb Wind Speed / Streamline Forecast
Valid 0000 UTC Sun 30-Aug-15

30 mph 50 70 90 110 130 150 +

WSI®

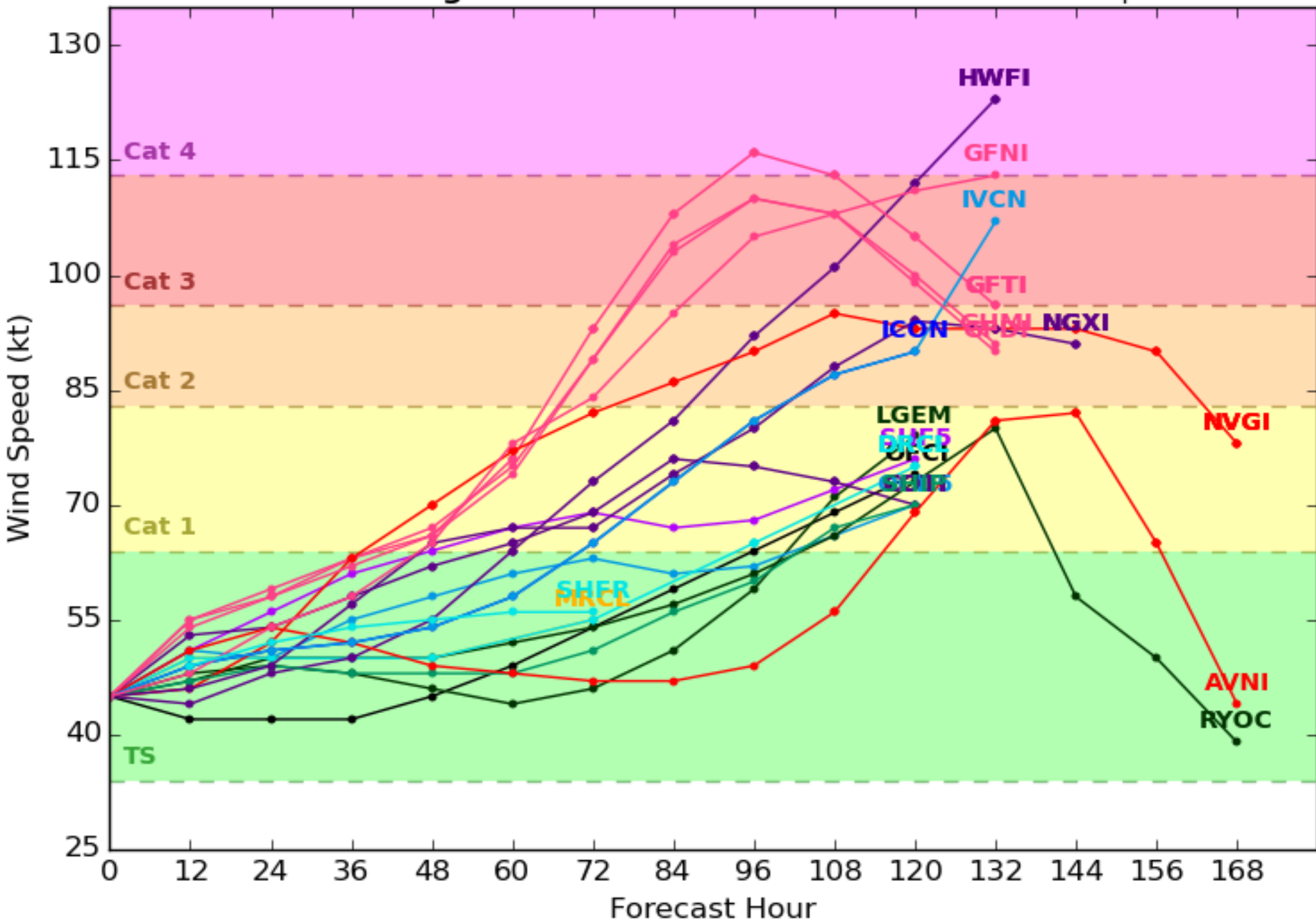
Levi Cowan - tropicaltidbits.com

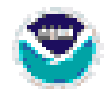


Tropical Storm ERIKA Model Intensity Guidance

Initialized at 06z Aug 27 2015

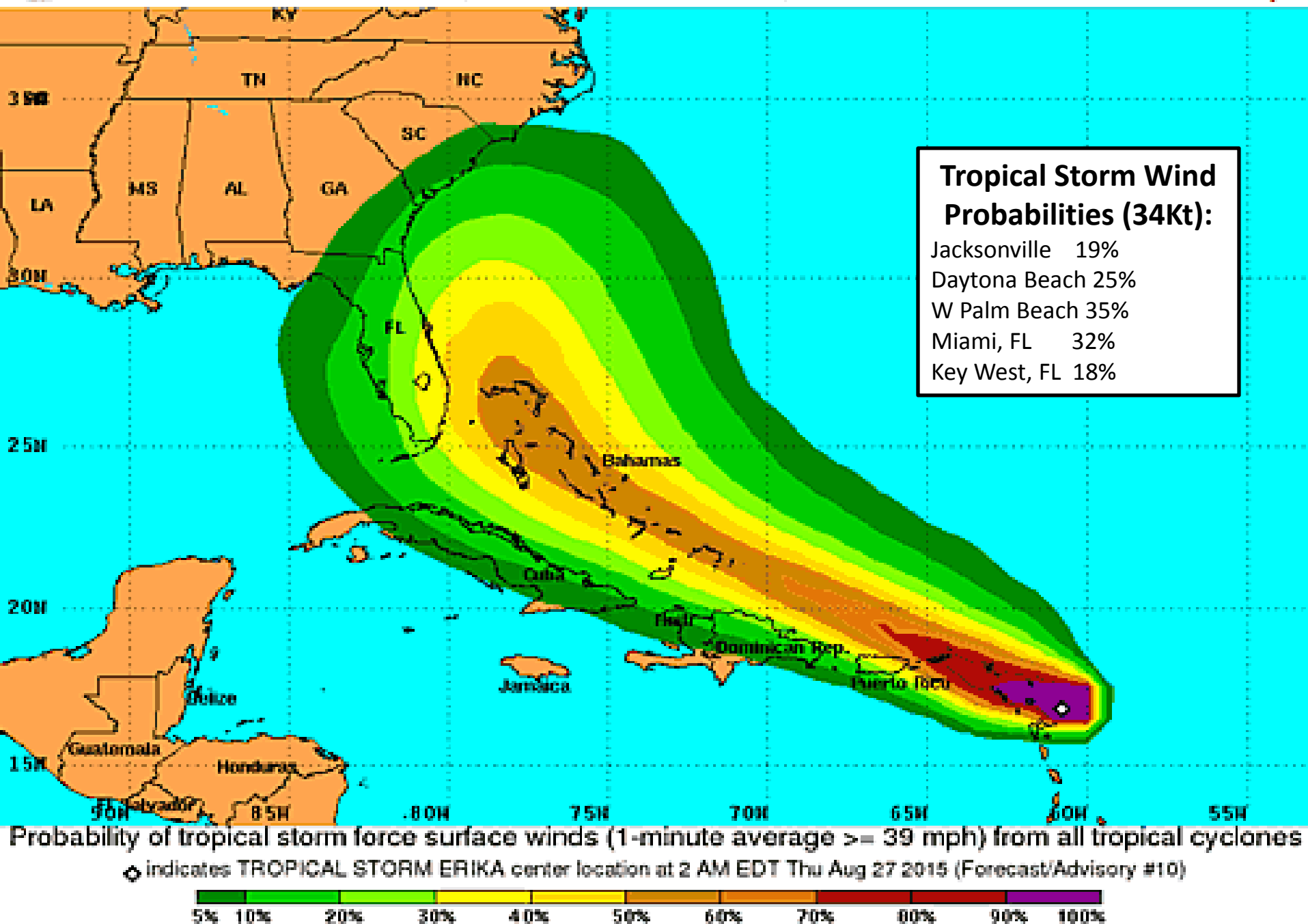
Levi Cowan - tropicaltidbits.com

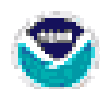




Tropical Storm Force Wind Speed Probabilities

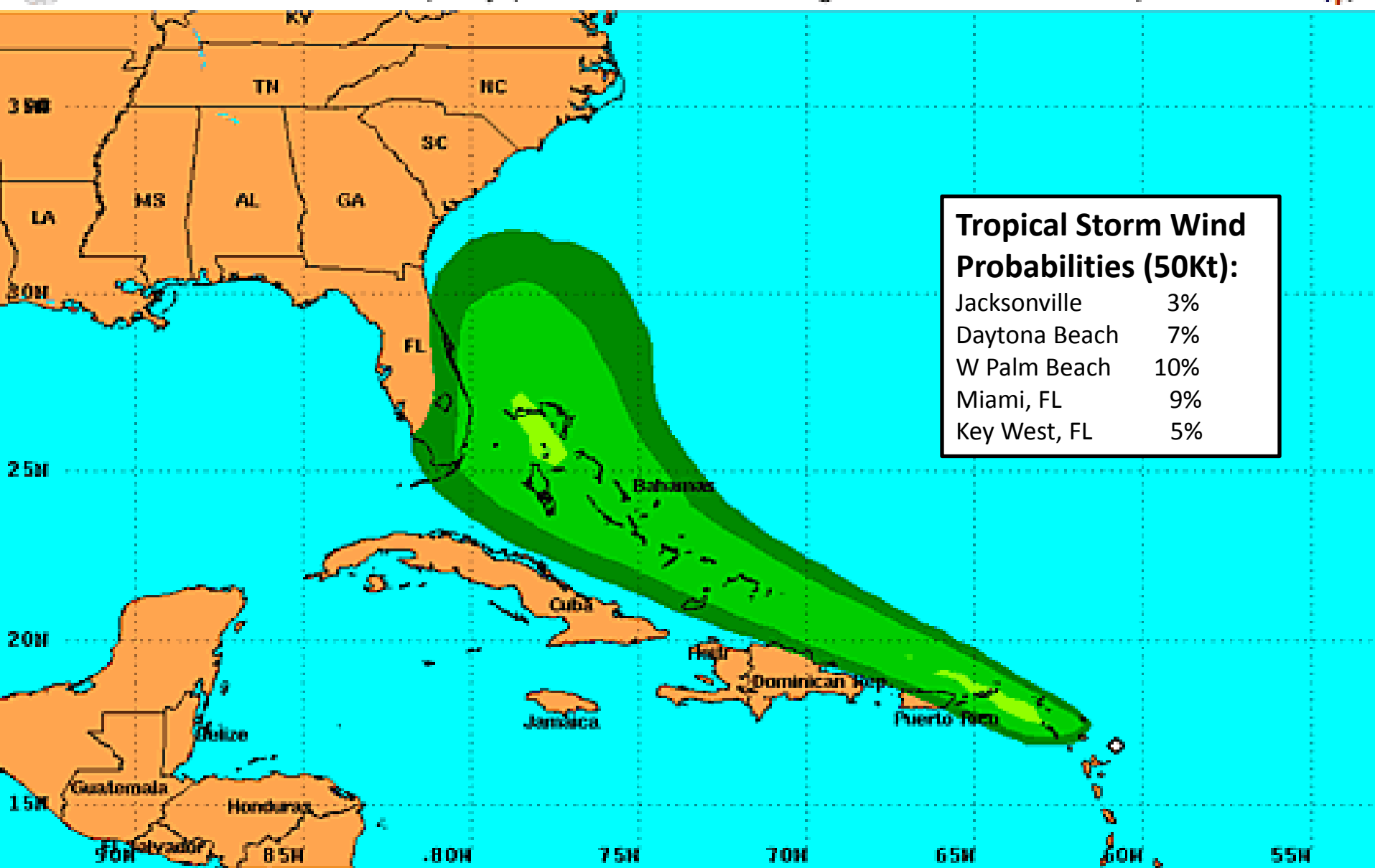
For the 120 hours (5 days) from 2 AM EDT Thu Aug 27 to 2 AM EDT Tue Sep 1





50-knot Wind Speed Probabilities

For the 120 hours (5 days) from 2 AM EDT Thu Aug 27 to 2 AM EDT Tue Sep 1



Tropical Storm Wind Probabilities (50Kt):

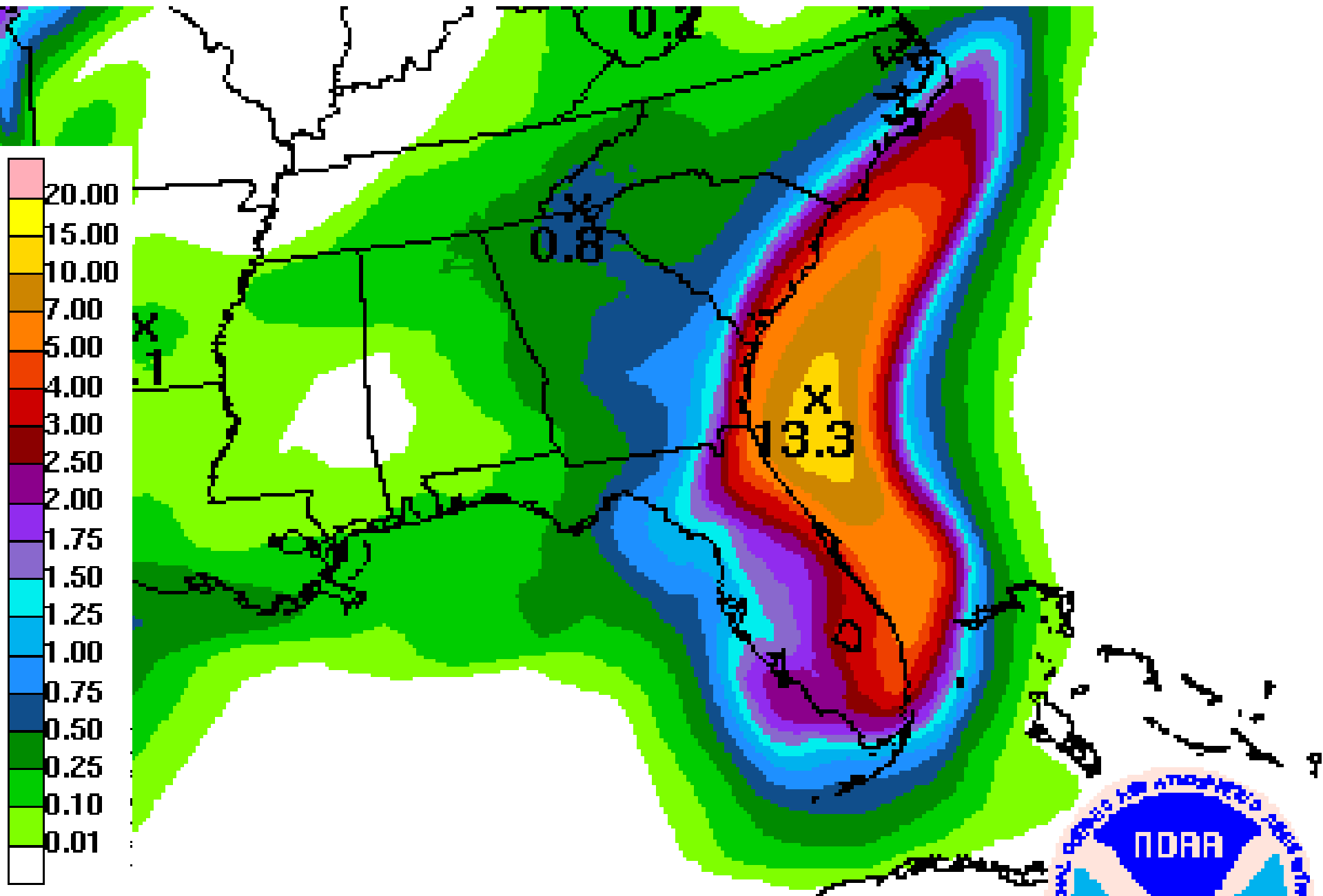
Jacksonville	3%
Daytona Beach	7%
W Palm Beach	10%
Miami, FL	9%
Key West, FL	5%

Probability of 1-minute average 50-knot (58 mph) or greater surface winds from all tropical cyclones

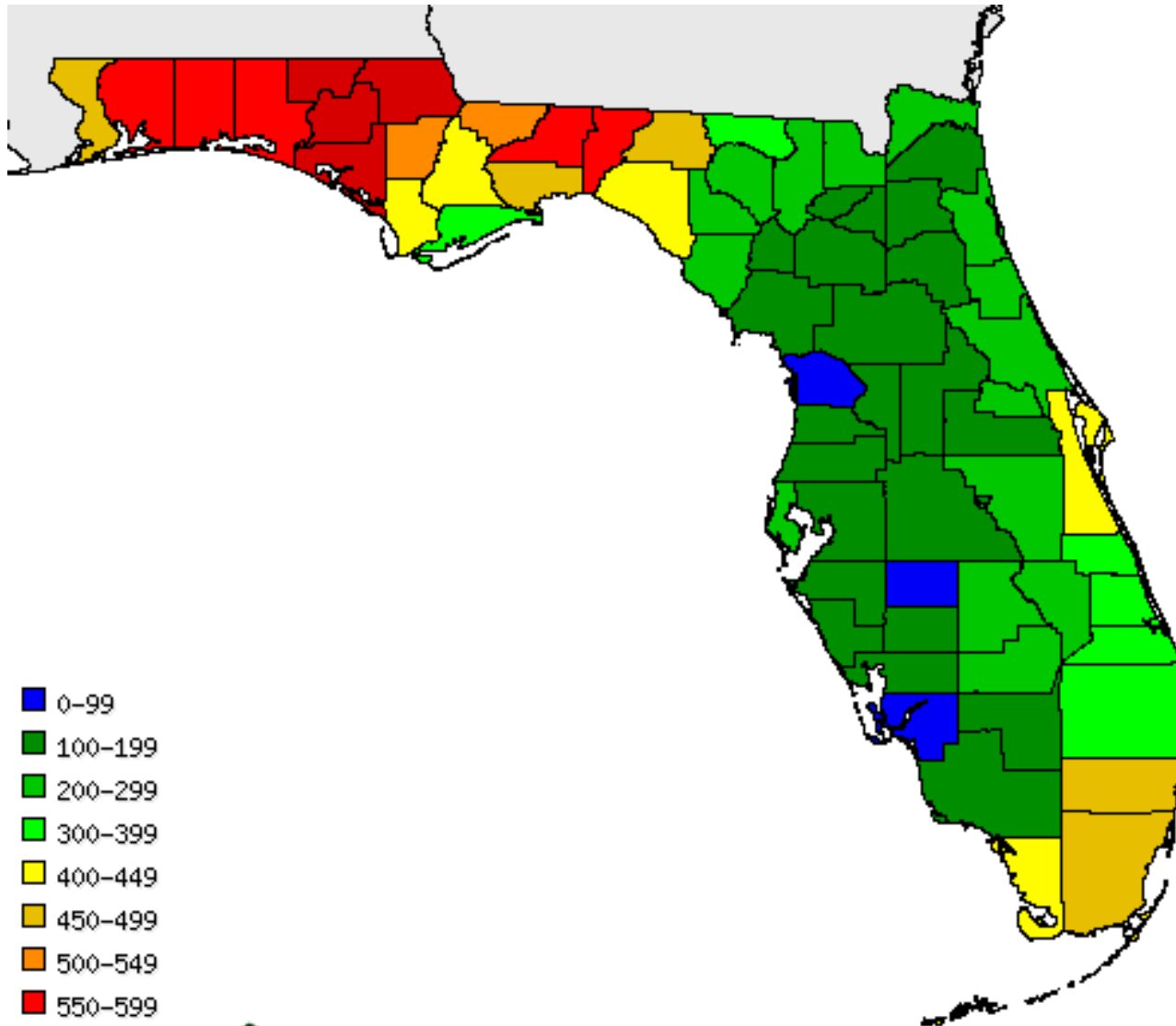
◊ indicates TROPICAL STORM ERIKA center location at 2 AM EDT Thu Aug 27 2015 (Forecast/Advisory #10)



Forecast 7 Day Rainfall Totals



Keetch Byram Drought Index (KDBI)



- 0-99
- 100-199
- 200-299
- 300-399
- 400-449
- 450-499
- 500-549
- 550-599
- 600-649
- 650-699
- 700-749
- 750+



Aug 26 2015

Outlook:

- Tropical Storm Erika has strengthened overnight and now has maximum sustained winds of 50 mph.
- Erika is currently located near the Lesser Antilles (Eastern Caribbean), or about 1350 miles southeast of Miami and is currently moving to the west at 16 mph.
- A slight turn towards the west-northwest is expected later today, and this general motion should continue over the next 48 hours.
- On this track, the center of Erika will move near the Virgin Islands later today and near or just north of Puerto Rico later tonight.
- The models have generally shifted their tracks westward over the last several runs, with the center of the National Hurricane Center's forecast cone now slightly east of Florida.
- However, there is still a great deal of uncertainty in the forecast after 48 hours, and the entire Florida Peninsula remains within the 5 day forecast cone.
- Despite strengthening overnight, Erika is still a very sheared tropical storm, with the main area of convection located to the east and southeast of the center.
- Models are still showing that Erika will be in an unfavorable environment for significant strengthening for the next 48 hours or so due to increasing wind shear.
- Tropical Storm Erika is expected to experience little change in intensity over the next 48 hours.
- After 48 hours, the environment should become more favorable due to weakening shear and warmer sea surface temperatures.
- The amount of strengthening that may occur once Erika reaches this environment is heavily dependent on how well it handles the conditions over the next 48 hours.
- Models still have a large spread in their intensity forecast after 48 hours, and the National Hurricane Center's forecast is on the lower side of the guidance due to the possibility that Erika does not survive the next 48 hours.
- Both Air Force and NOAA Hurricane Hunters are currently conducting flights into Erika.

Florida Outlook:

- The entire Florida Peninsula remains within the 5 day forecast cone, with areas along the Southeast Florida coast now having 30%-40% chance of experiencing tropical storm force winds during the next 5 days.
- It is important when looking at these probability graphics to not focus on the number, but rather the trends as new products become available. The probability of tropical storm force winds across the Peninsula have been slowly increasing.
- Given the uncertainty in the forecast in the 3 to 5 day range, it is very difficult to determine what the impact to Florida may be at this time, however, interests in Florida should continue to monitor the storms progress as it nears the U.S.
- Another Briefing Packet will be sent out this afternoon after the 5pm advisory.
- For more information on this system visit the NHC website at www.nhc.noaa.gov.



TROPICAL UPDATE

Created by:

Molly Merrifield, Assistant State Meteorologist

Molly.Merrifield@em.myflorida.com

State Meteorological Support Unit

Florida Division of Emergency
Management