



TROPICAL UPDATE

11 AM EDT

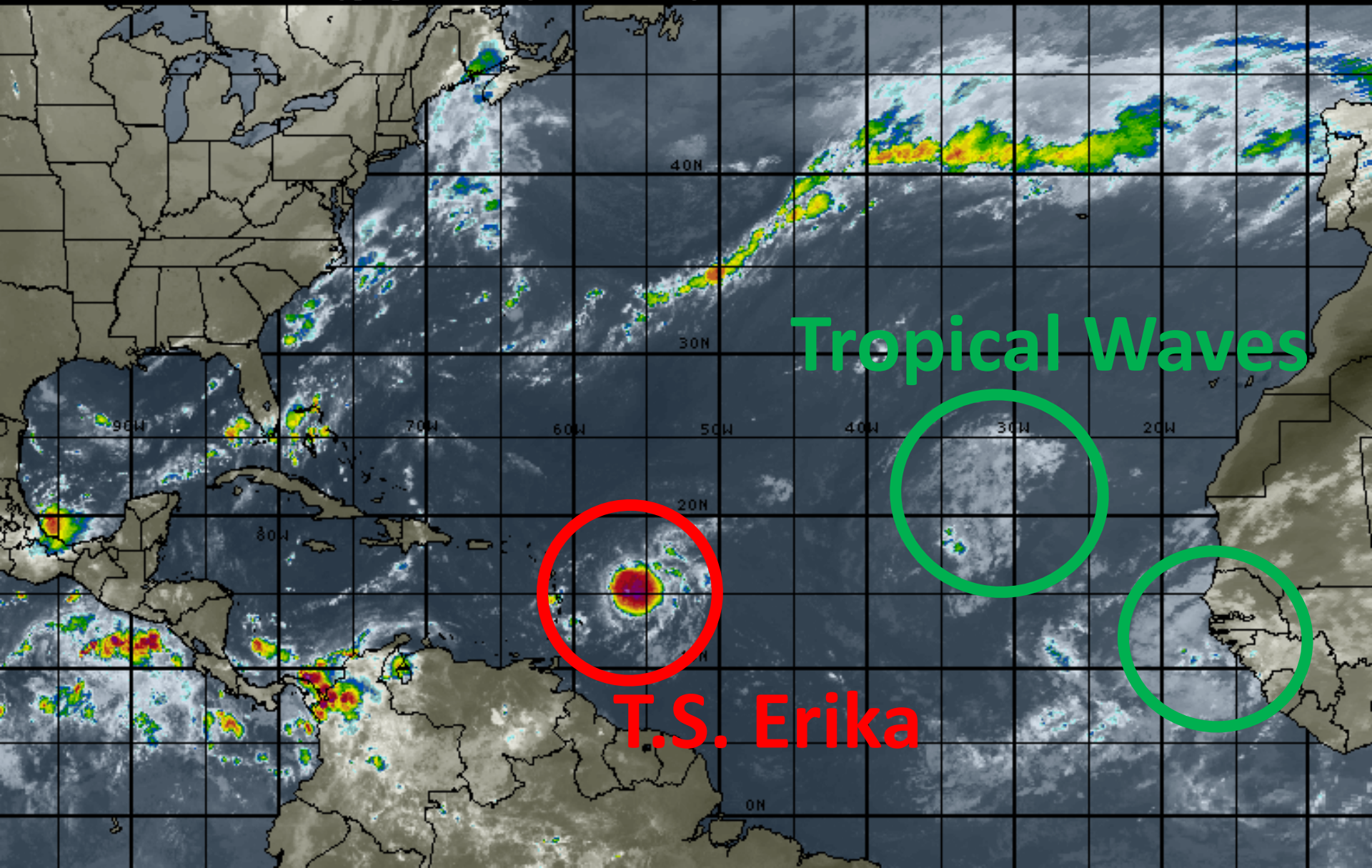
Wednesday, August 25, 2015

Tropical Storm Erika

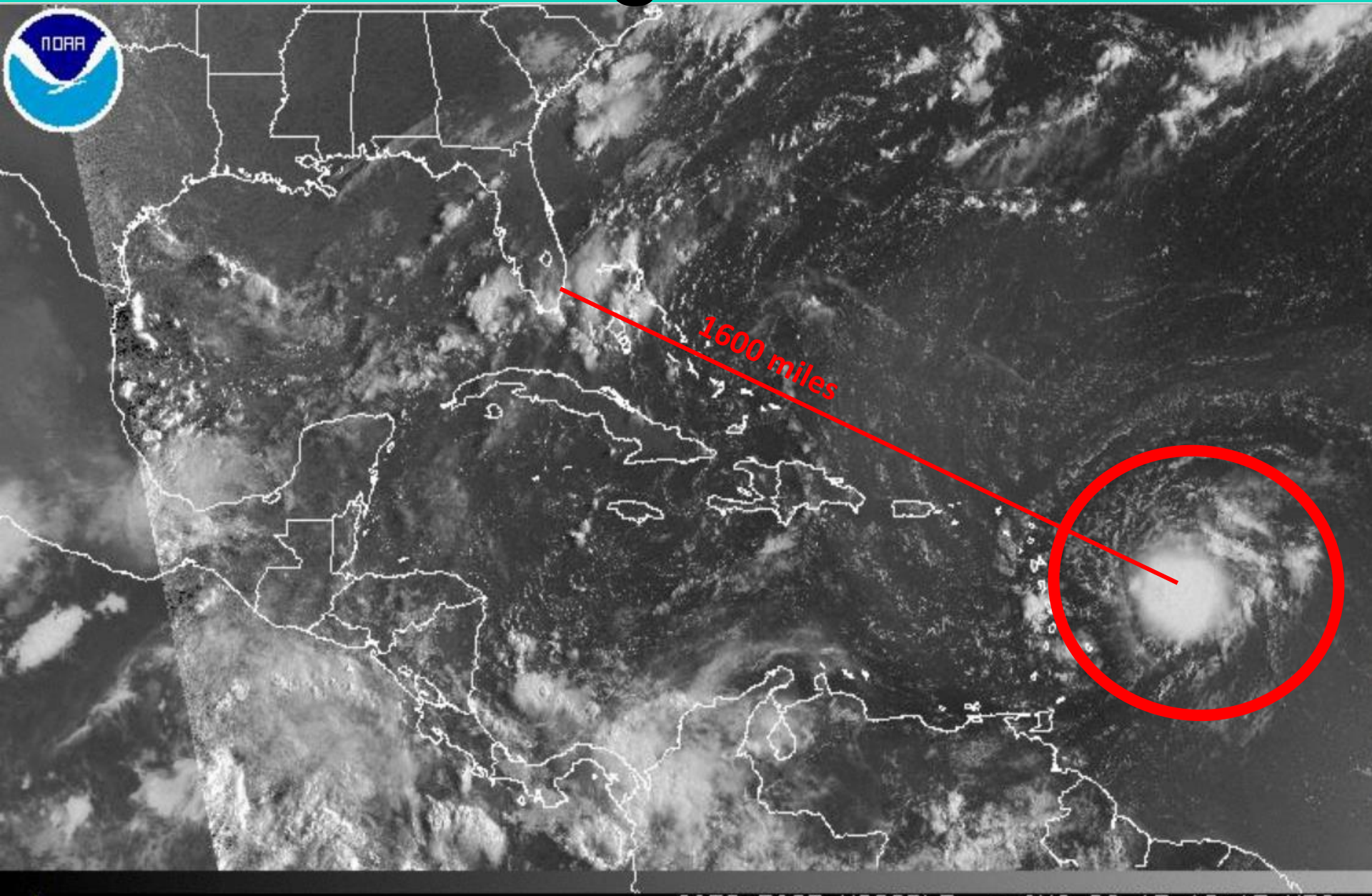
This update is intended for government and emergency response officials, and is provided for informational and situational awareness purposes only. Forecast conditions are subject to change based on a variety of environmental factors. For additional information, or for any life safety concerns with an active weather event please contact your County Emergency Management or Public Safety Office, local National Weather Service forecast office or visit the National Hurricane Center website at www.nhc.noaa.gov.

Atlantic Basin Satellite Image

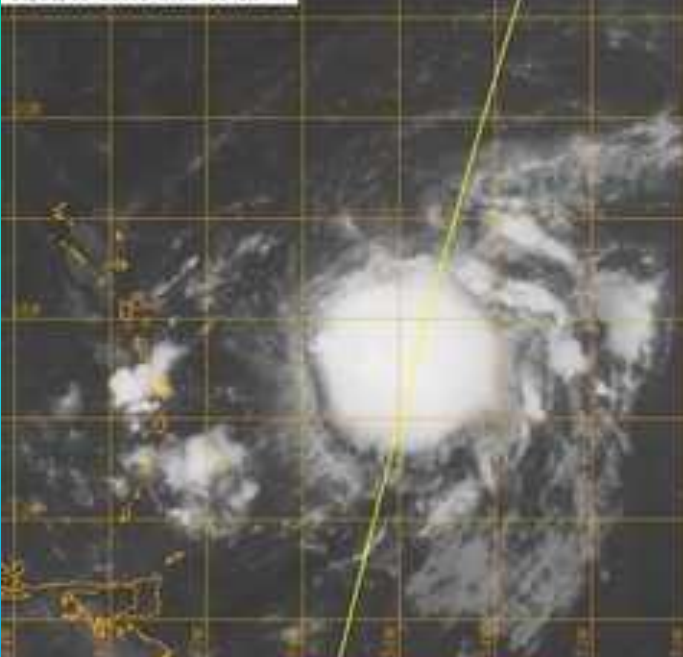
12:00 26-AUG-2015 GMT ©Copyright WSI Corporation <http://www.wsi.com>



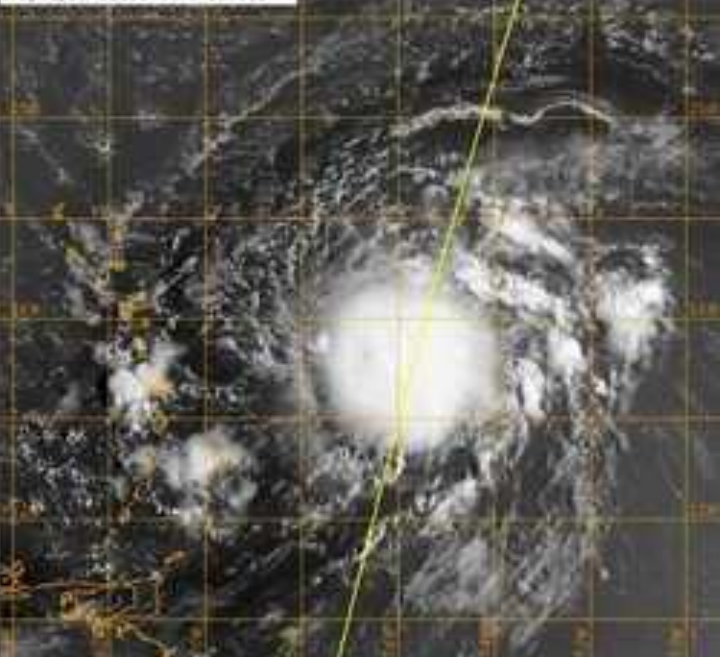
Satellite Images of T.S. Erika



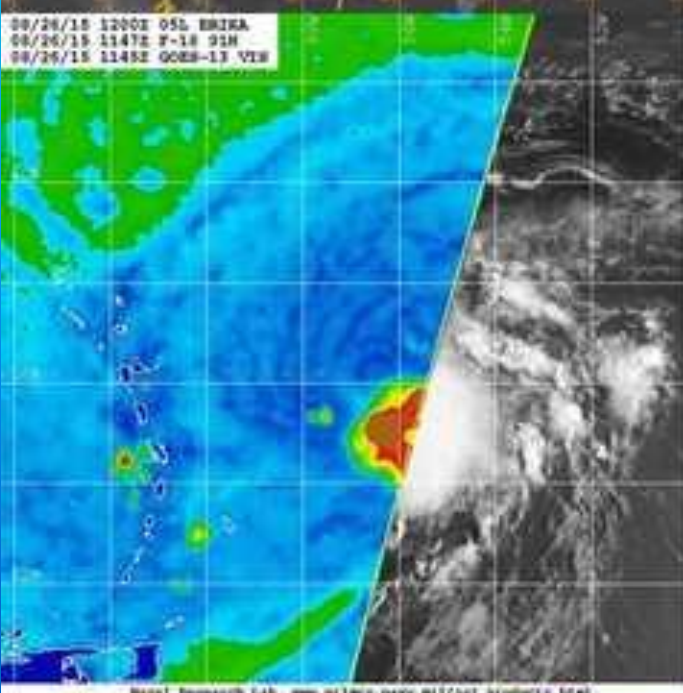
08/26/15 1200Z 05L ERIKA
08/26/15 1147Z F-18 OVERPASS
08/26/15 1145Z GOES-13 IR



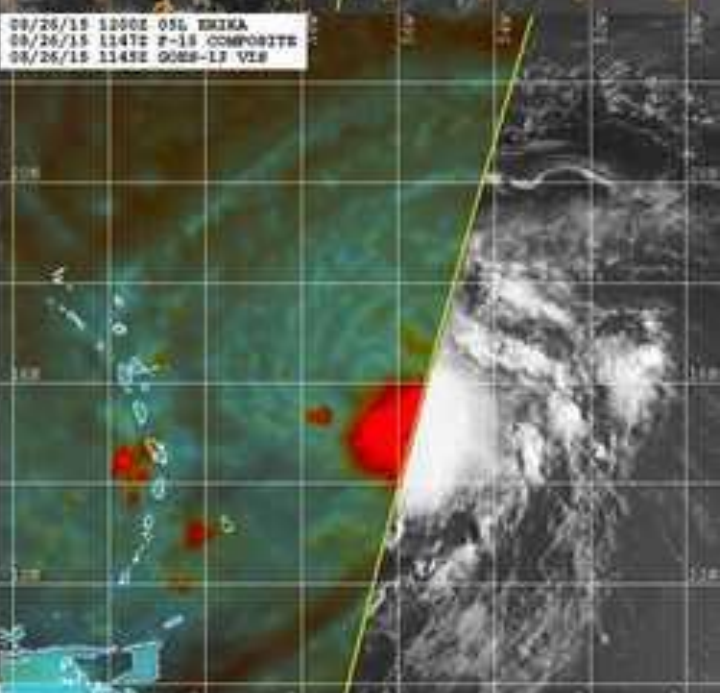
08/26/15 1200Z 05L ERIKA
08/26/15 1147Z F-18 OVERPASS
08/26/15 1145Z GOES-13 VIS



08/26/15 1200Z 05L ERIKA
08/26/15 1147Z F-18 91M
08/26/15 1145Z GOES-13 VIS



08/26/15 1200Z 05L ERIKA
08/26/15 1147Z F-18 COMPOSITE
08/26/15 1145Z GOES-13 VIS

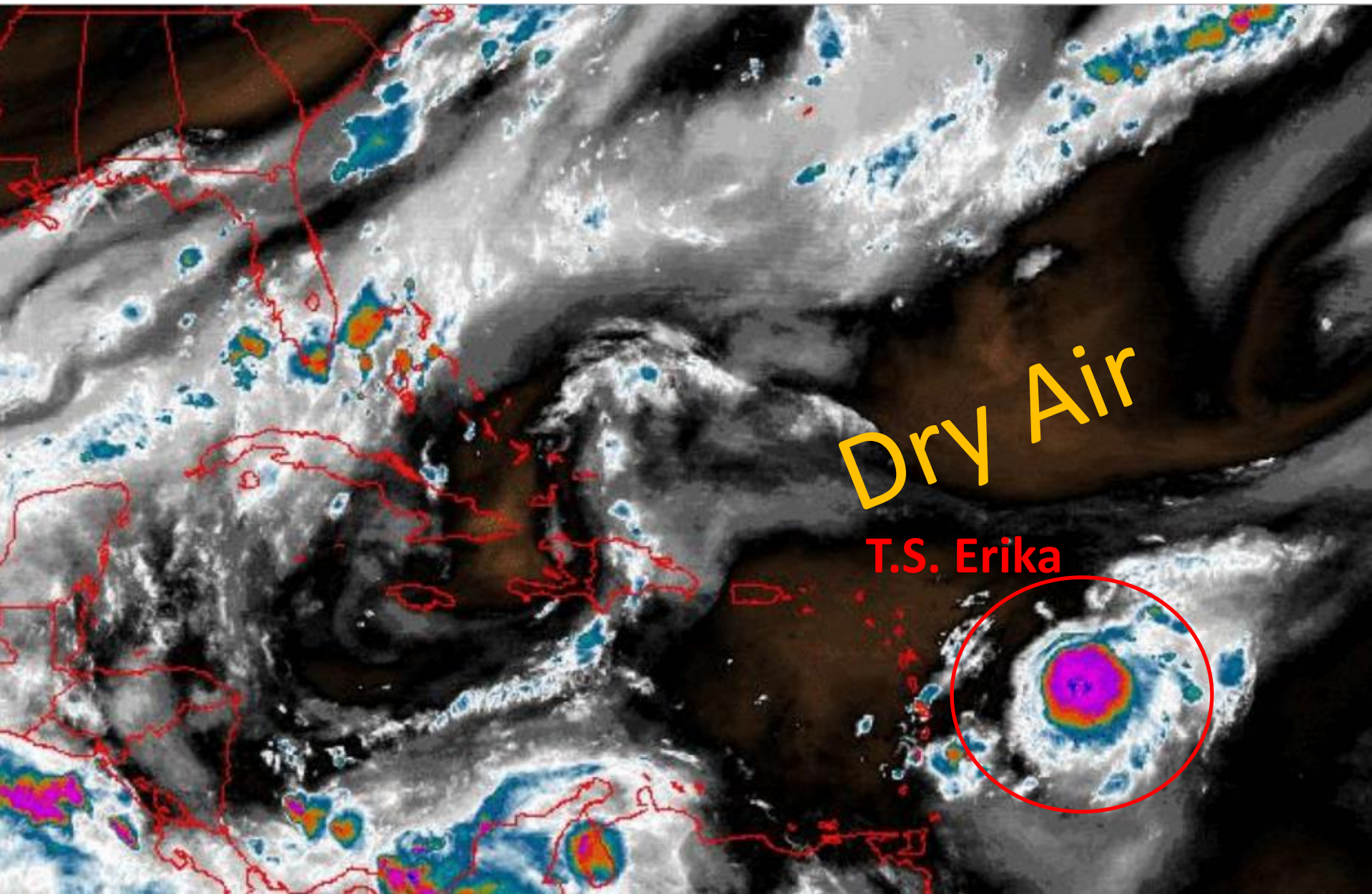


Naval Research Lab: www.nrlmcy.navy.mil/navi_products.html
510 Brightness Temp (Kelvin)



Naval Research Lab: www.nrlmcy.navy.mil/navi_products.html
510-BRIGHT Temp (K) 01m-11V

Water Vapor Satellite Image



Tropical Storm Erika

11 AM EDT Wed Aug 26 2015

Position 16.1 N 57.6 W

Maximum Winds 45 mph

Gusts 55 mph

Movement W at 17 mph

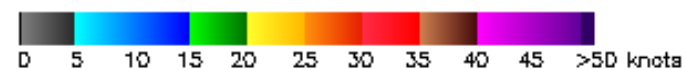
Minimum Pressure 1005 mb (29.67 inches)

Blue Marble basemap imagery courtesy NASA

Satellite 3:07 PM UTC
11:07 AM EDT



ASCAT 25KM NOAA Winds Aug 26 13:02 UTC 2015 ascending

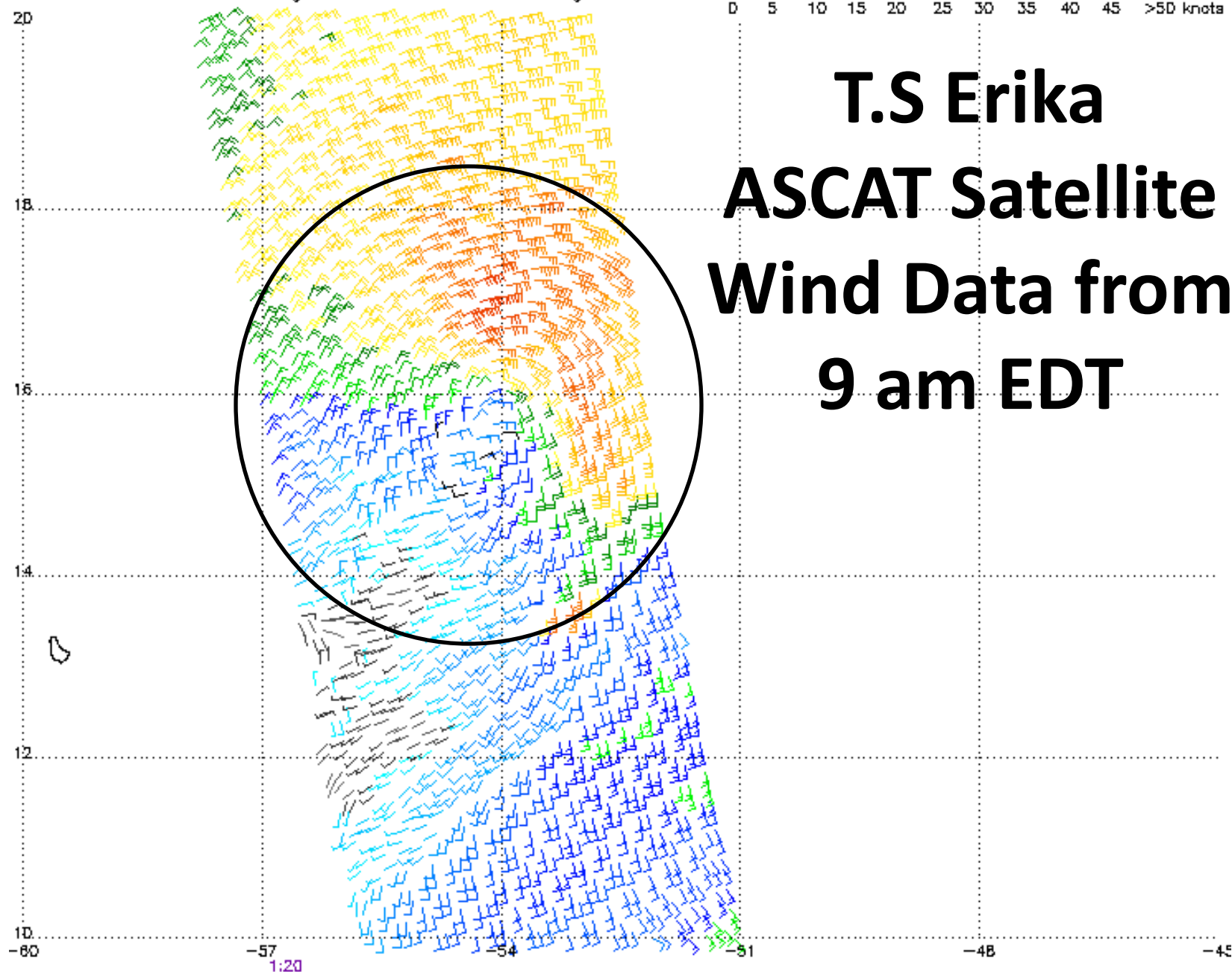


T.S Erika

ASCAT Satellite

Wind Data from

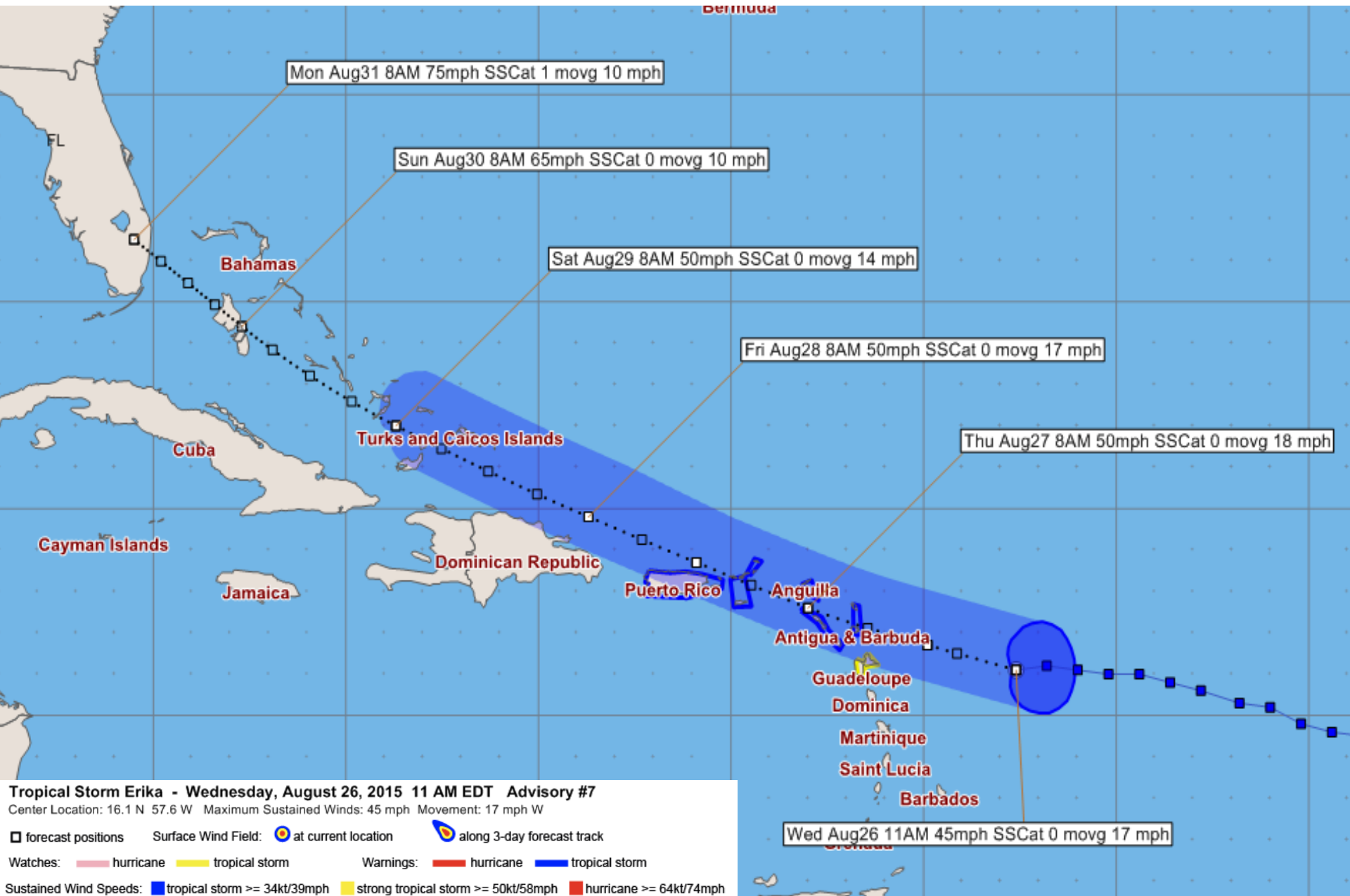
9 am EDT



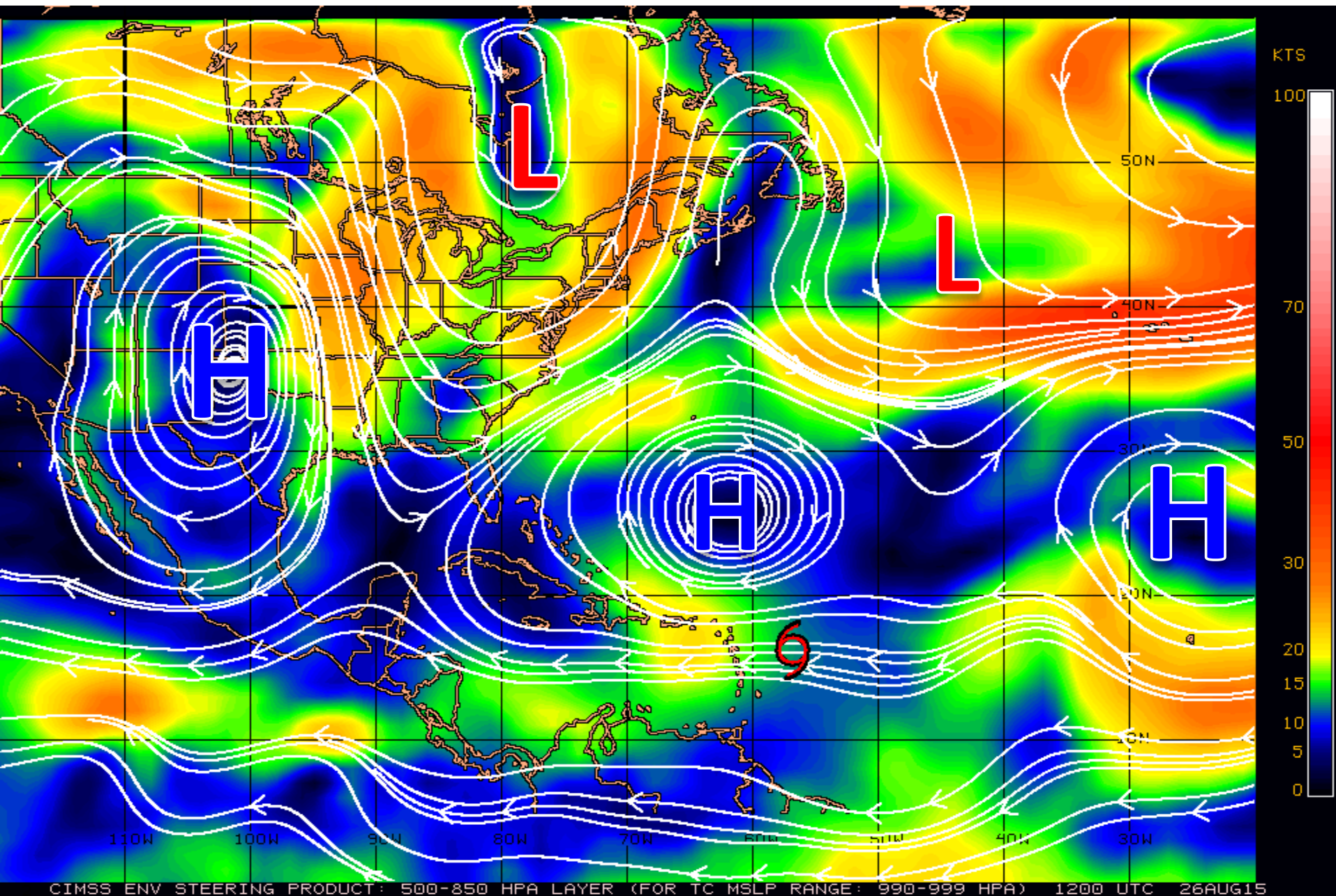
Note: 1) Times are GMT 2) Times along bottom correspond to measurement at 15N
3) Data buffer is 22 hrs from Aug 26 13:02 UTC 2015 4) Black wind bars indicate possible contamination
NOAA/NESDIS/Center for Satellite Applications and Research



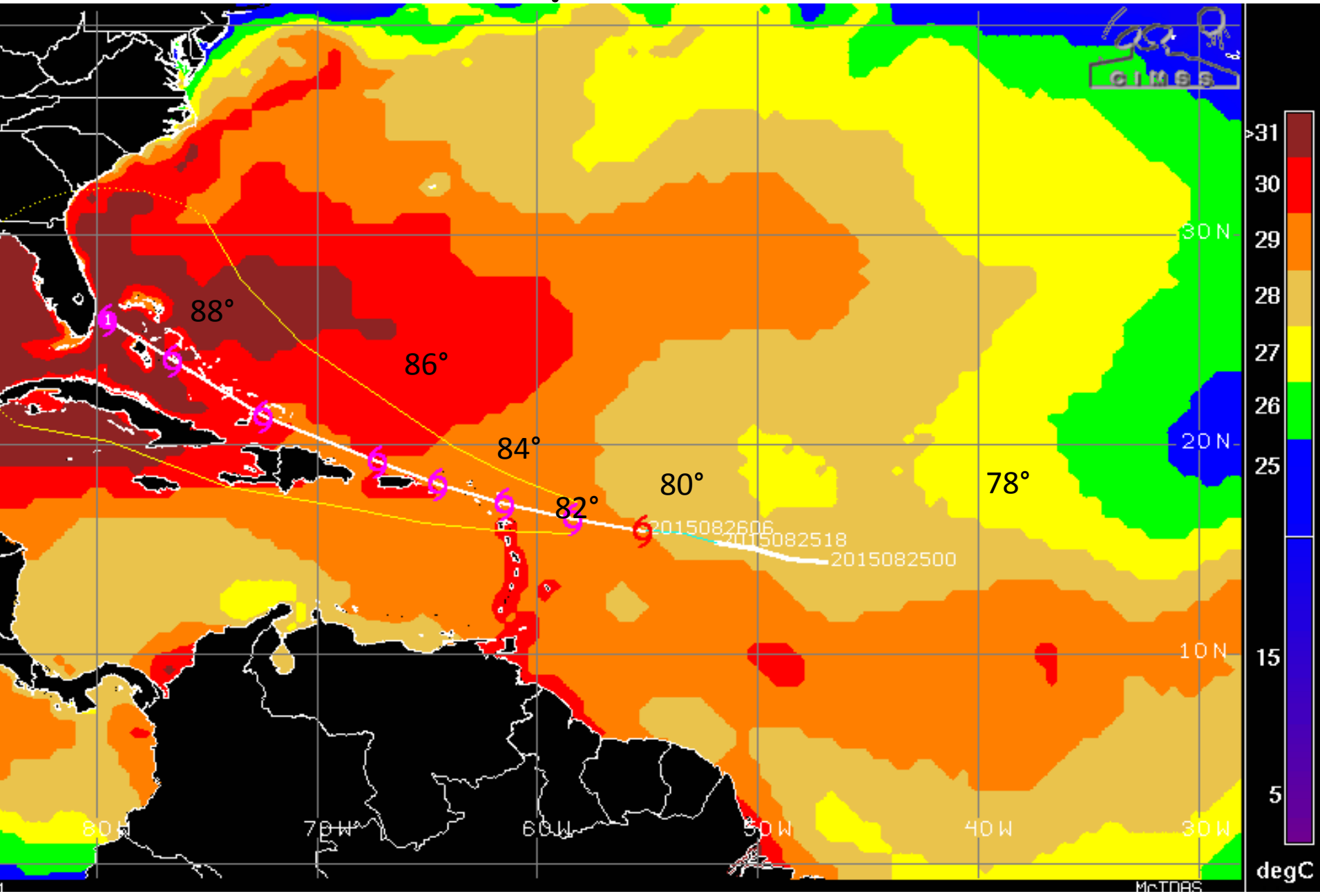
3 Day Wind Swath and NHC Forecast Track



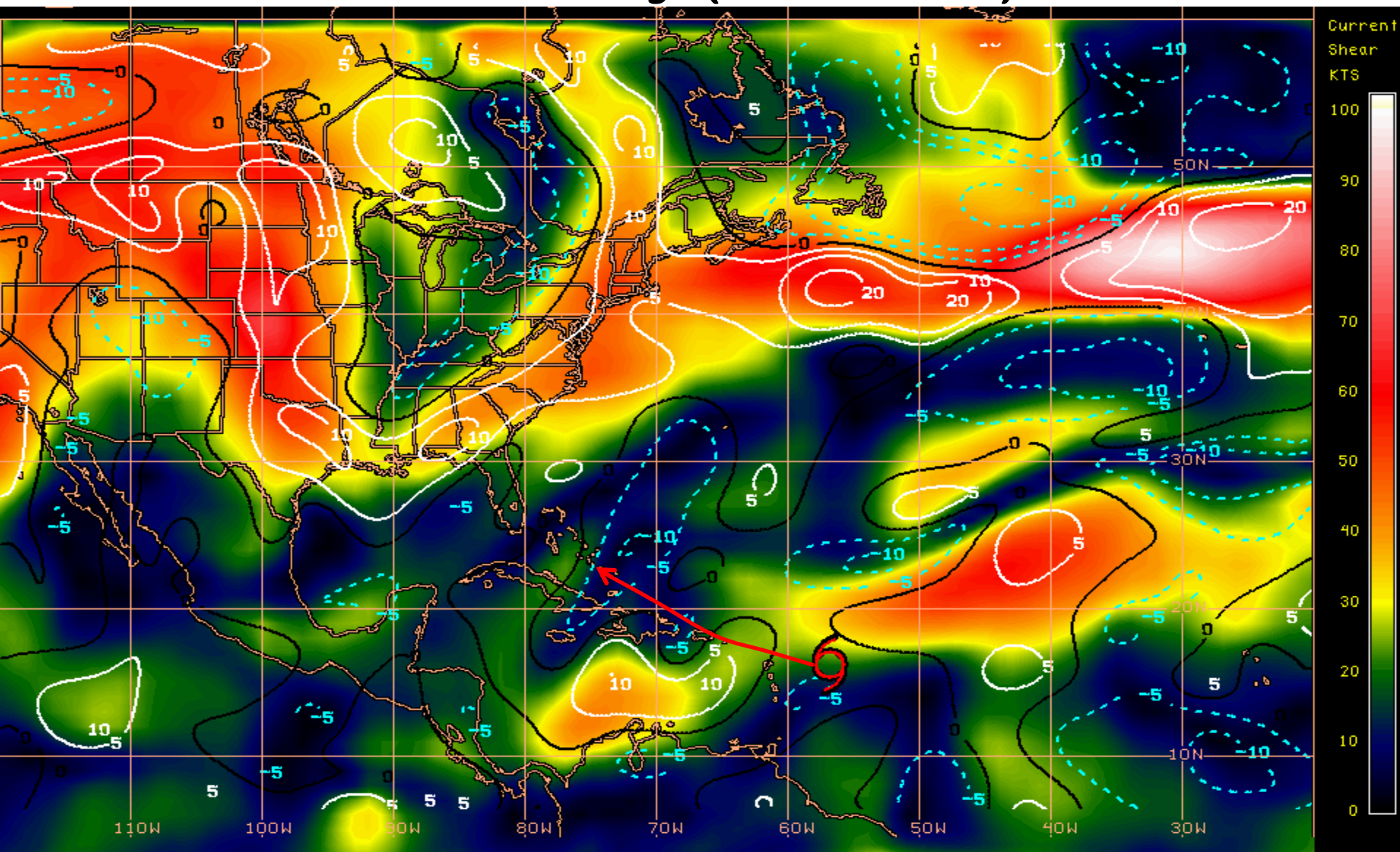
Steering Currents



Sea Surface Temperatures Near T.S. Erika



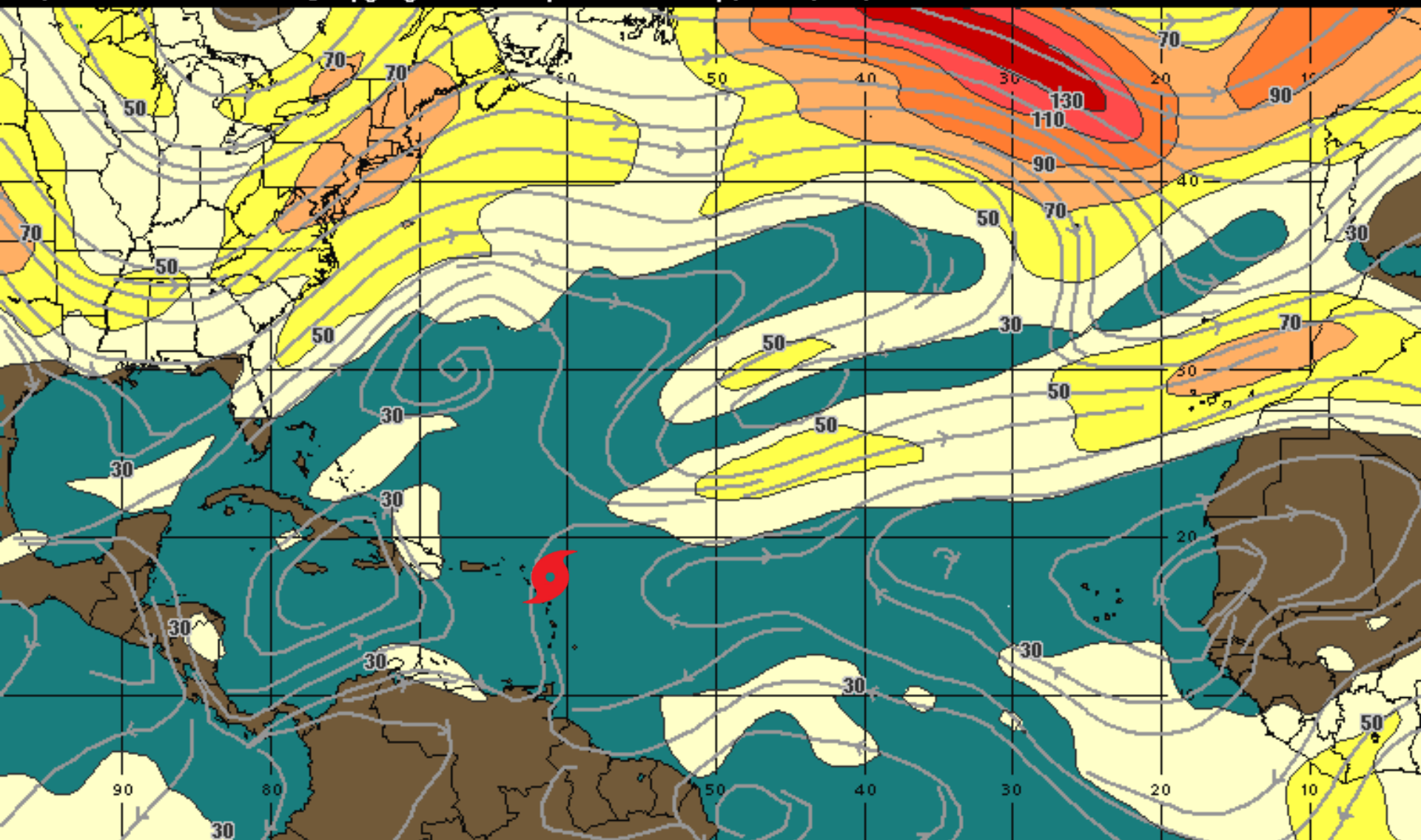
Current Wind Shear (shaded) and Shear Tendency (contours)



Shear Tendency (KTS) Over Past 24 Hours: Increasing ——— Decreasing - - - -

Forecast Wind Shear-Tonight

00:00 26-AUG-2015 GMT ©Copyright WSI Corporation <http://www.wsi.com>



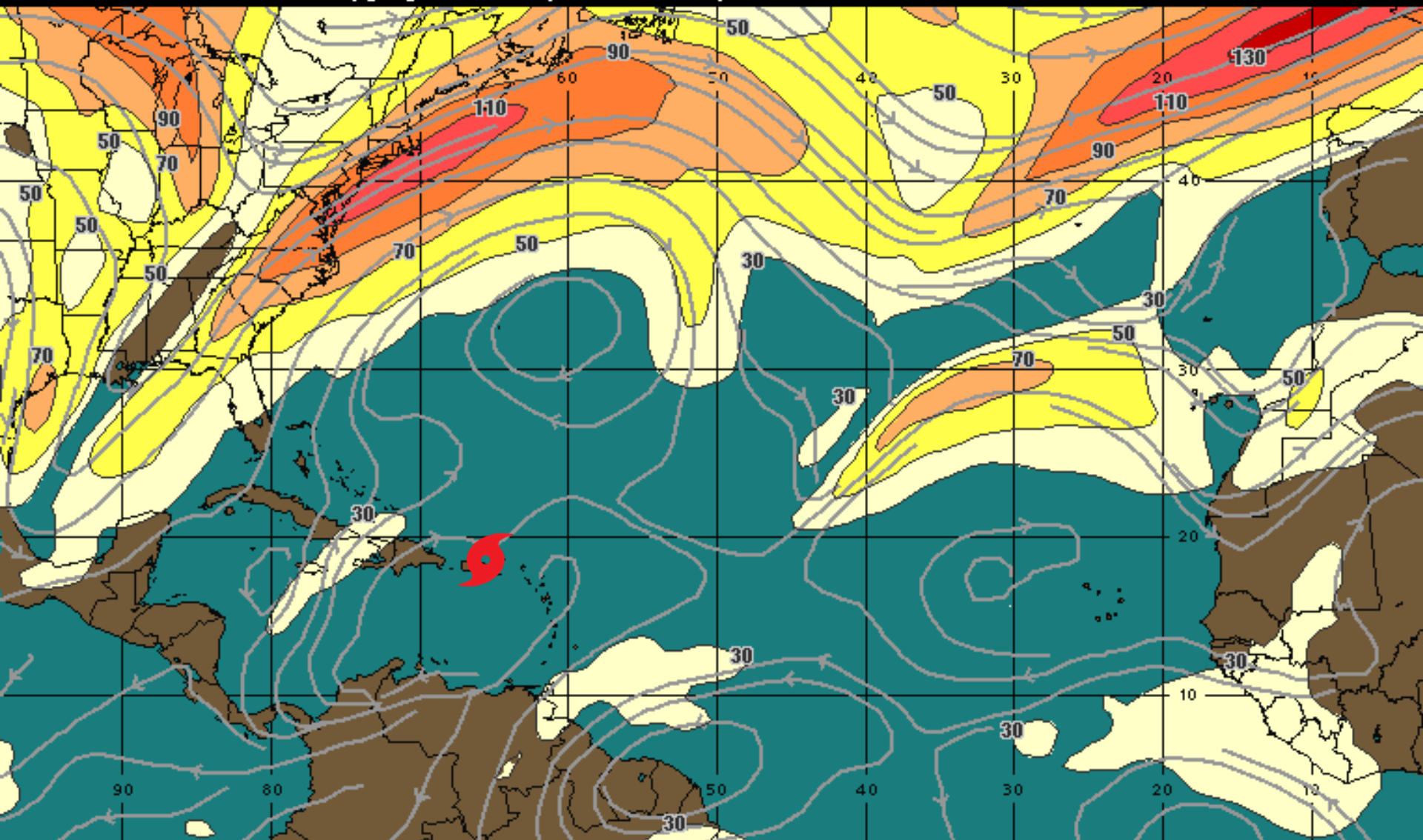
200Mb Wind Speed / Streamline Analysis
Valid 0000 UTC Wed 26-Aug-15

30 mph 50 70 90 110 130 150 +

WSI

Forecast Wind Shear-Thursday Night

00:00 28-AUG-2015 GMT ©Copyright WSI Corporation <http://www.wsi.com>

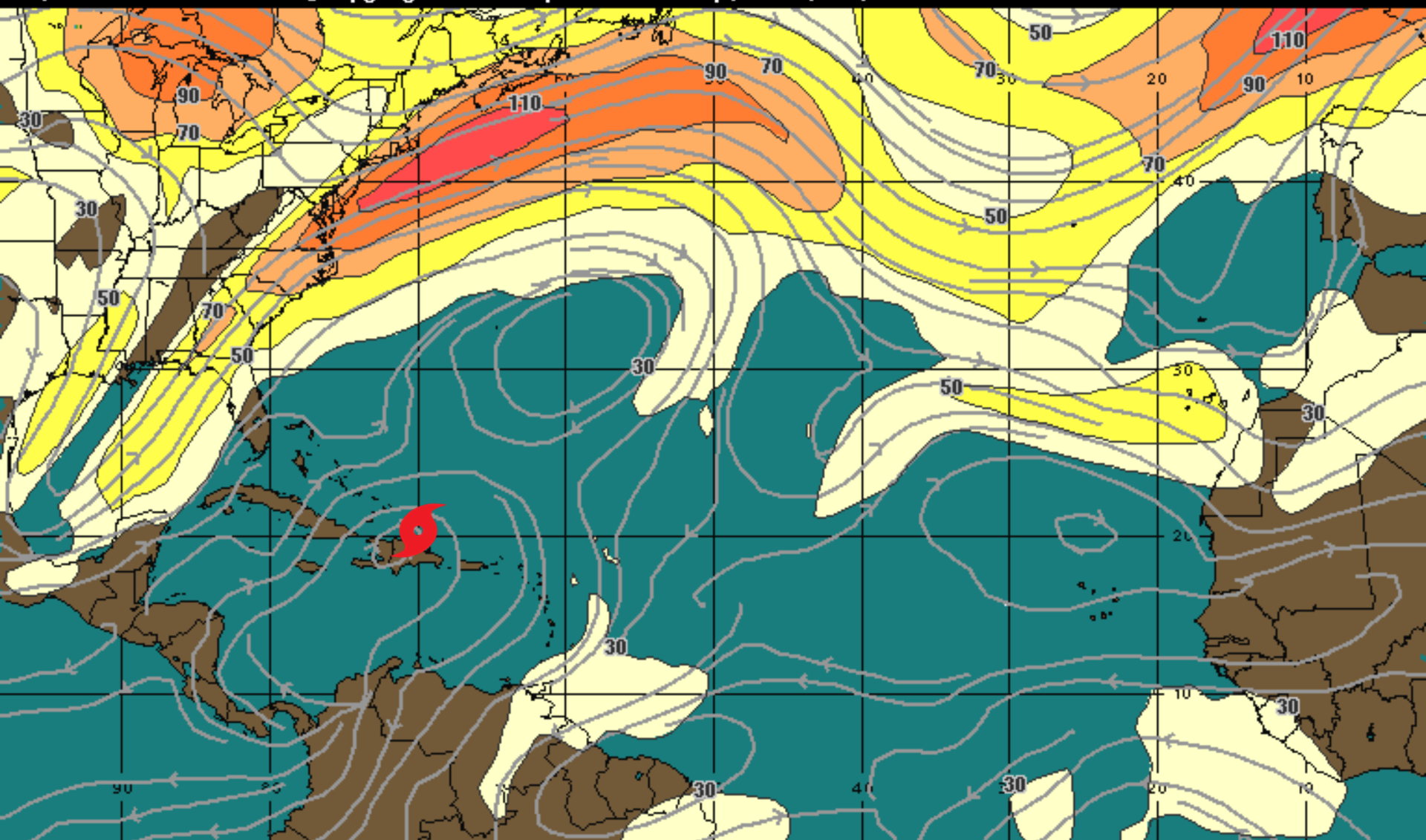


200Mb Wind Speed / Streamline Forecast
Valid 0000 UTC Fri 28-Aug-15

30 mph 50 70 90 110 130 150 + WSI

Forecast Wind Shear-Friday Morning

12:00 28-AUG-2015 GMT ©Copyright WSI Corporation <http://www.wsi.com>



200Mb Wind Speed / Streamline Forecast
Valid 1200 UTC Fri 28-Aug-15

30 mph 50 70 90 110 130 150 +

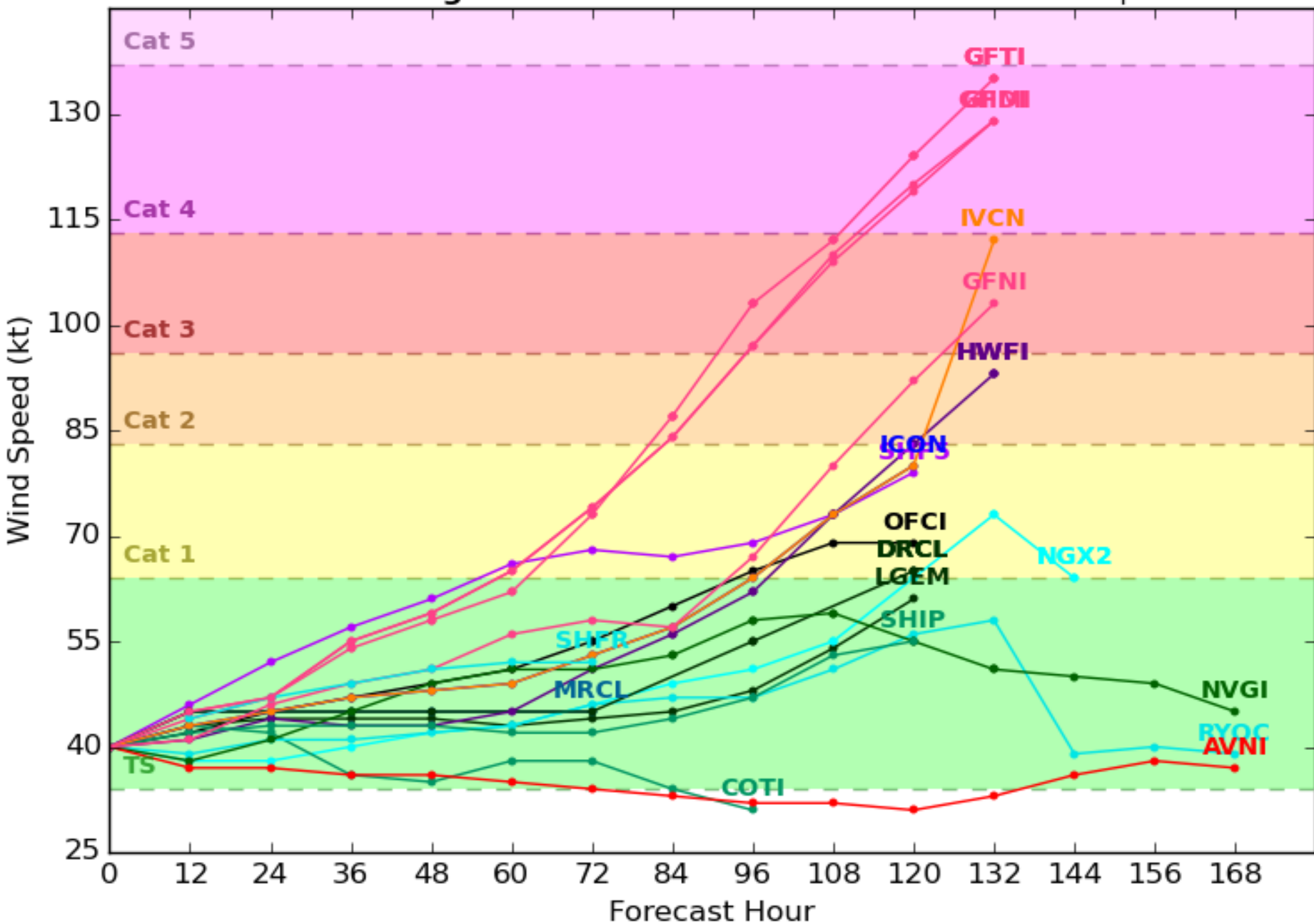
WSI®

Levi Cowan - tropicaltidbits.com

Tropical Storm ERIKA Model Intensity Guidance

Initialized at 12z Aug 26 2015

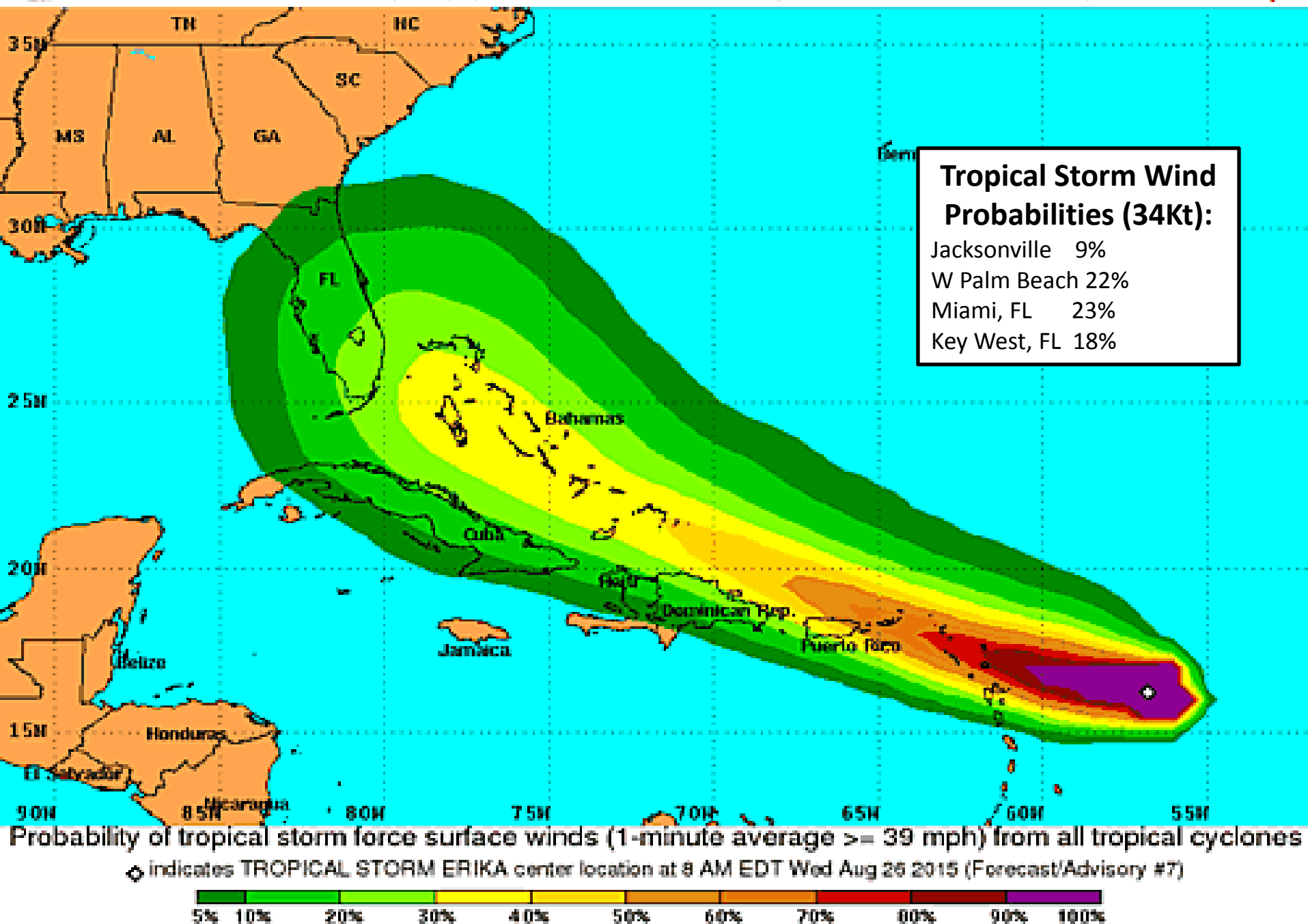
Levi Cowan - tropicaltidbits.com

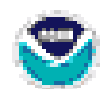




Tropical Storm Force Wind Speed Probabilities

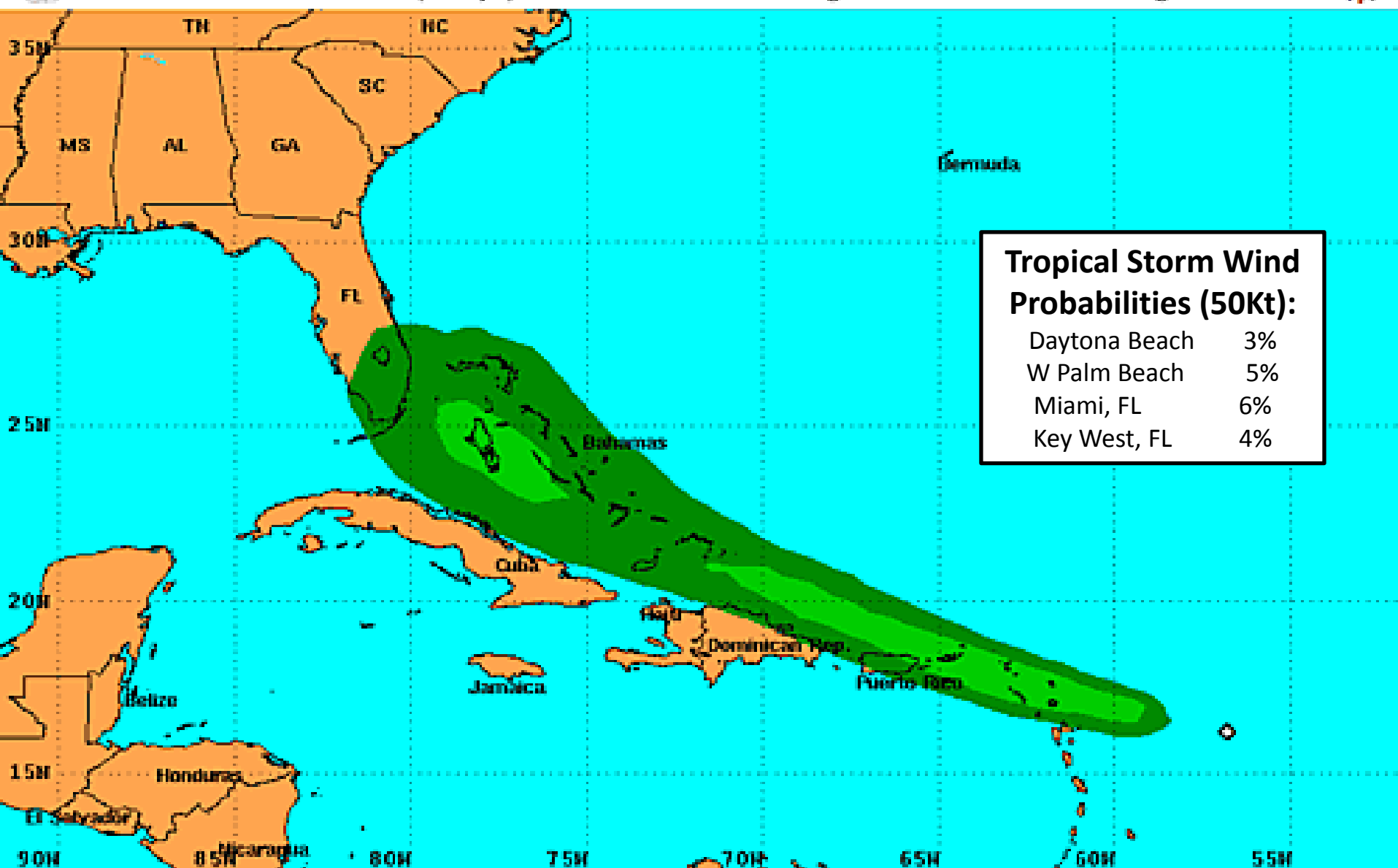
For the 120 hours (5 days) from 8 AM EDT Wed Aug 26 to 8 AM EDT Mon Aug 31





50-knot Wind Speed Probabilities

For the 120 hours (5 days) from 8 AM EDT Wed Aug 26 to 8 AM EDT Mon Aug 31



Probability of 1-minute average 50-knot (58 mph) or greater surface winds from all tropical cyclones

◊ indicates TROPICAL STORM ERIKA center location at 8 AM EDT Wed Aug 26 2015 (Forecast/Advisory #7)



Outlook:

- Tropical Storm Erika currently has maximum sustained winds of 45 mph, with gusts up to 55 mph.
- Tropical Storm Erika is currently located about 285 miles east-southeast of Antigua, or a little over 1600 miles southeast of Miami, FL
- Tropical Storm Erika was able to regain numerous showers and storms near the center last night and has maintained this convection through the morning hours as depicted on Satellite imagery, however, despite this convection little change in intensity and organization has occurred and tropical storm force winds extend up to 105 miles, primarily east, from the center.
- Erika is moving quickly westward at 17 mph and is forecast to continue to move west to west-northwestward during the next 48 hours as the system travels along the southern periphery of a large area of high pressure in the Atlantic.
- Over the next 48 to 72 hours forecast models are consistent in showing Erika moving through an area of warm ocean waters and marginal to strong wind shear which will support little change in intensity during this time and this is also indicated in the official forecast from the NHC which keeps Erika a Tropical Storm during this time.
- After 72 hours forecast track and intensity models begin to diverge significantly.
- The environment near the Bahamas is somewhat conducive for further development, and for this reason, forecast models that take the system more northward indicate gradual strengthening in the extended forecast.
- Other models keep Erika weaker and show a more westward track due to increased interaction with the islands of Puerto Rico and Hispaniola and increased wind shear.
- The amount of strengthening on days 4 to 5 will depend heavily on how Erika responds to the current winds shear in the Caribbean .
- The official forecast from the National Hurricane Center takes Erika near the Lesser Antilles overnight tonight and into Thursday as a tropical storm, just north or very near the Islands of Puerto Rico and Hispaniola Thursday and Friday, before passing through the Bahamas and strengthening into a Category 1 Hurricane late this weekend as it near the southeastern Florida coast.
- Given the significant spread in the forecast model guidance in the 3 to 5 day range, confidence in the track and intensity forecast late in the period is low.
- Air Force Hurricane Hunter Aircraft is scheduled to investigate Erika throughout the day today.

Florida Outlook:

- Much of the Florida Peninsula remains within the 5 day forecast cone and locations along the east coast of Florida have between a 10% to 23% chance of seeing tropical storm force winds in the next 5 days as indicated in the NHC Tropical Storm Wind Speed Probabilities.
- Given the uncertainty in the forecast in the 3 to 5 day range, it is very difficult to determine what the impact to Florida may be at this time, however, interests in Florida should continue to monitor the storms progress as it nears the U.S.
- Another Briefing Packet will be sent out tomorrow morning around 8 am.
- For more information on this system visit the NHC website at www.nhc.noaa.gov.



TROPICAL UPDATE

Created by:

Tiffany Hersey, Deputy State Meteorologist

Tiffany.Hersey@em.myflorida.com

State Meteorological Support Unit

Florida Division of Emergency
Management