



TROPICAL UPDATE

11 AM EDT

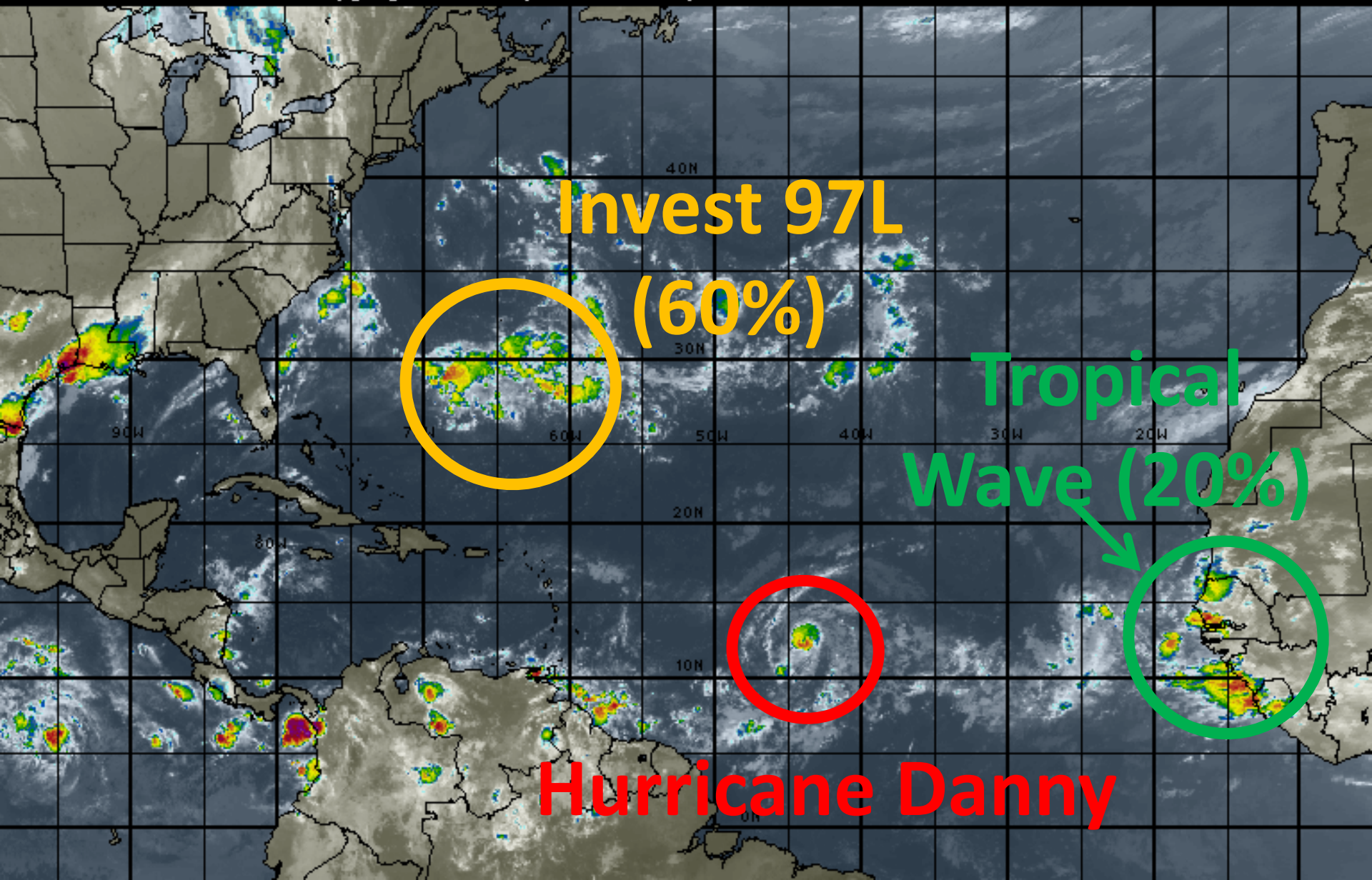
Thursday, August 20, 2015

Hurricane Danny

This update is intended for government and emergency response officials, and is provided for informational and situational awareness purposes only. Forecast conditions are subject to change based on a variety of environmental factors. For additional information, or for any life safety concerns with an active weather event please contact your County Emergency Management or Public Safety Office, local National Weather Service forecast office or visit the National Hurricane Center website at www.nhc.noaa.gov.

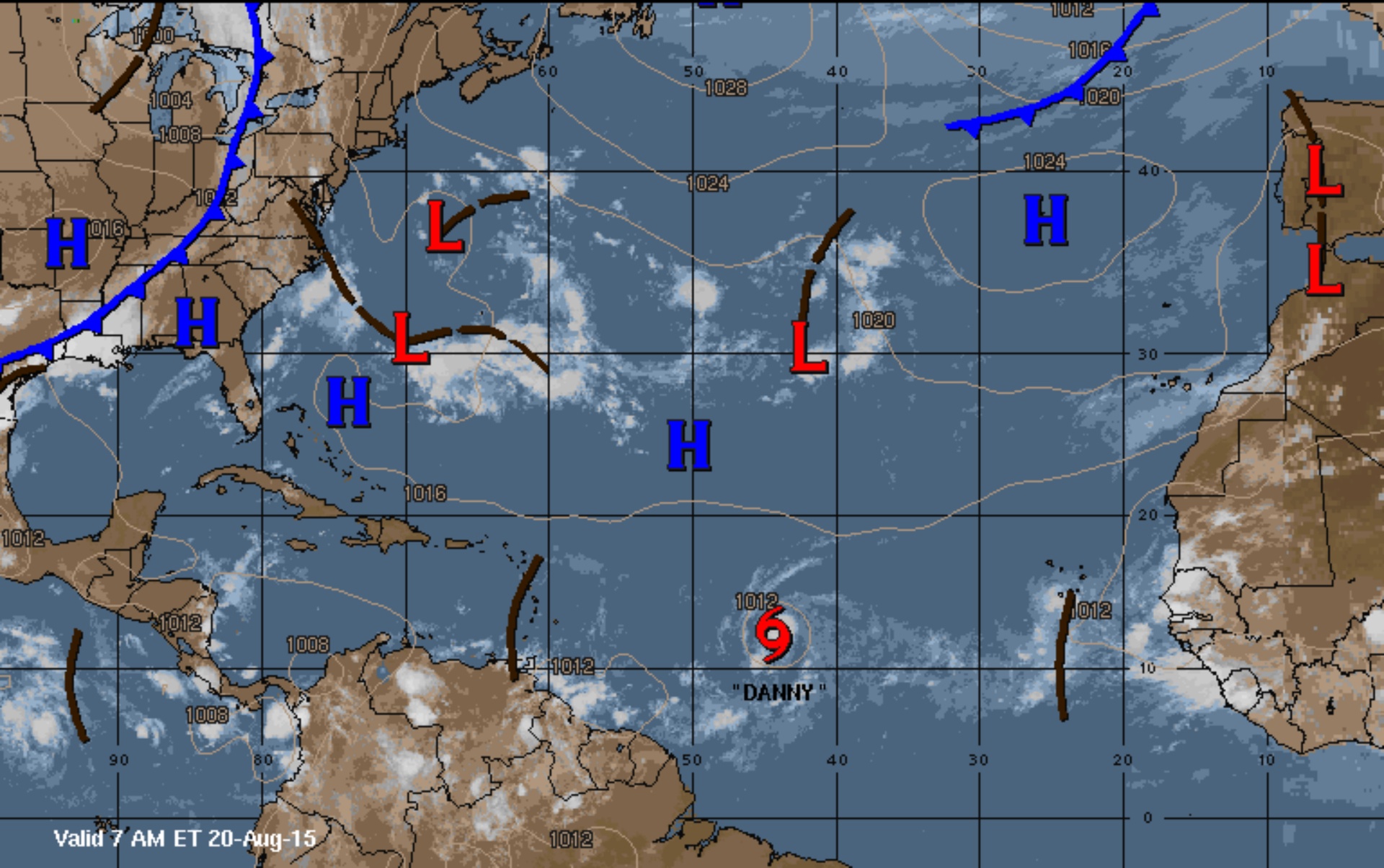
Atlantic Basin Satellite Image

12:00 20-AUG-2015 GMT ©Copyright WSI Corporation <http://www.wsi.com>



Current Tropical Surface Analysis

12:00 20-AUG-2015 GMT ©Copyright WSI Corporation <http://www.wsi.com>



Valid 7 AM ET 20-Aug-15



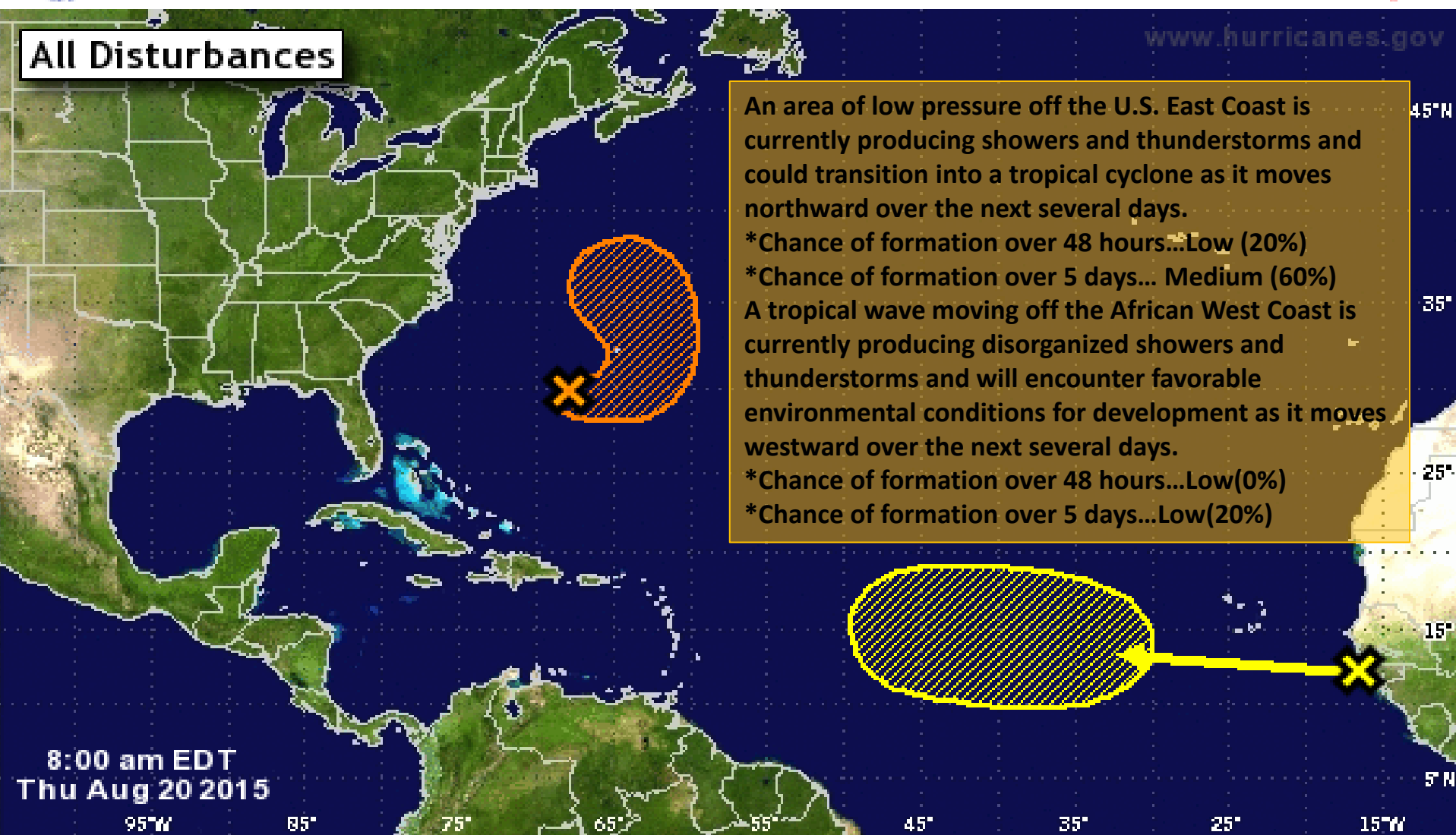
Five-Day Graphical Tropical Weather Outlook

National Hurricane Center Miami, Florida



www.hurricanes.gov

All Disturbances



An area of low pressure off the U.S. East Coast is currently producing showers and thunderstorms and could transition into a tropical cyclone as it moves northward over the next several days.

- *Chance of formation over 48 hours...Low (20%)
- *Chance of formation over 5 days... Medium (60%)

A tropical wave moving off the African West Coast is currently producing disorganized showers and thunderstorms and will encounter favorable environmental conditions for development as it moves westward over the next several days.

- *Chance of formation over 48 hours...Low(0%)
- *Chance of formation over 5 days...Low(20%)

8:00 am EDT
Thu Aug 20 2015

95°W 85° 75° 65° 55° 45° 35° 25° 15°W

Tropical Cyclone Formation Potential for the 5-Day Period Ending 8:00 am EDT Tue Aug 25 2015

Chance of Cyclone Formation in 5 Days: ■ Low < 40% ■ Medium 40-60% ■ High > 60%

X indicates current disturbance location; shading indicates potential formation area.

Satellite Images

Hurricane Danny

11 AM EDT Thu Aug 20 2015

Position 12.5 N 44.8 W

Maximum Winds 75 mph

Gusts 90 mph

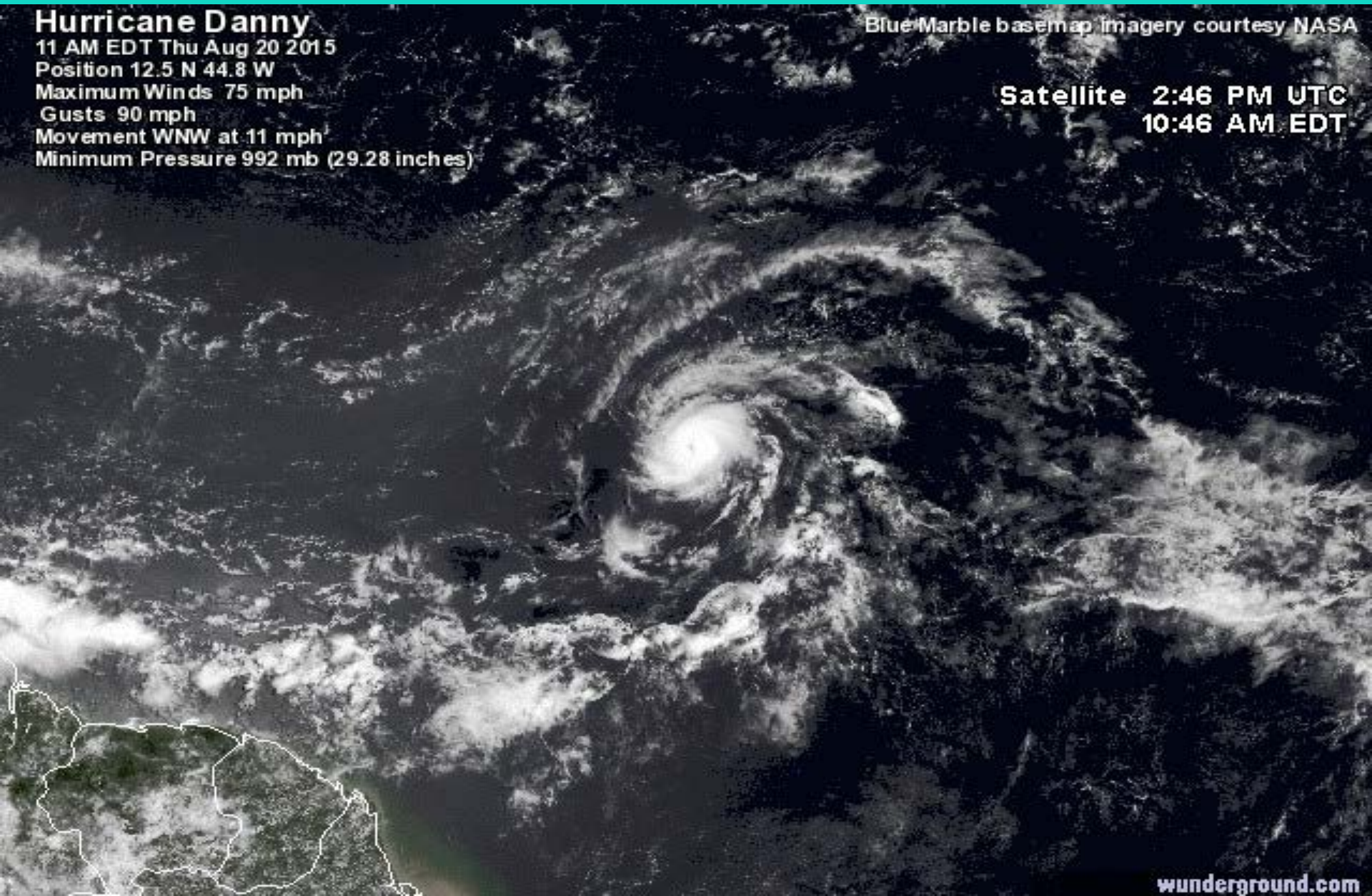
Movement WNW at 11 mph

Minimum Pressure 992 mb (29.28 inches)

Blue Marble basemap imagery courtesy NASA

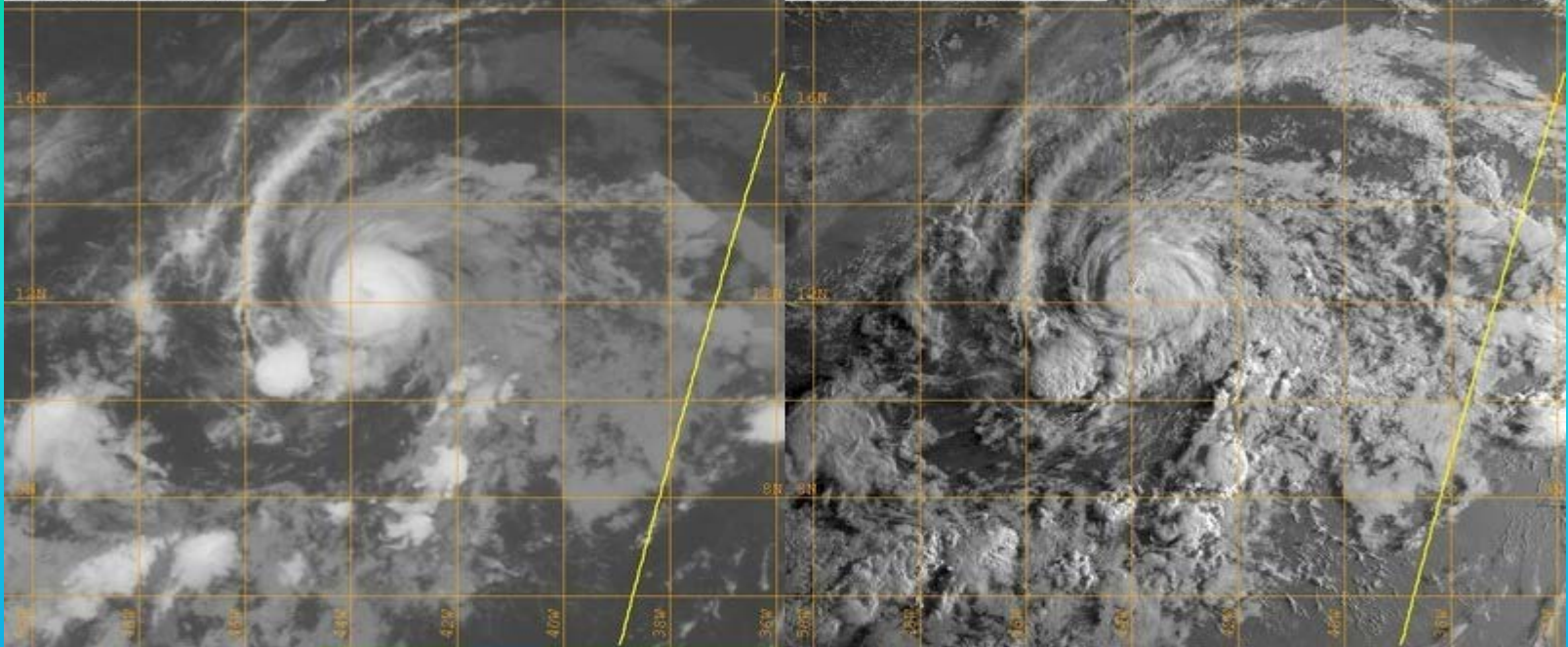
Satellite 2:46 PM UTC

10:46 AM EDT



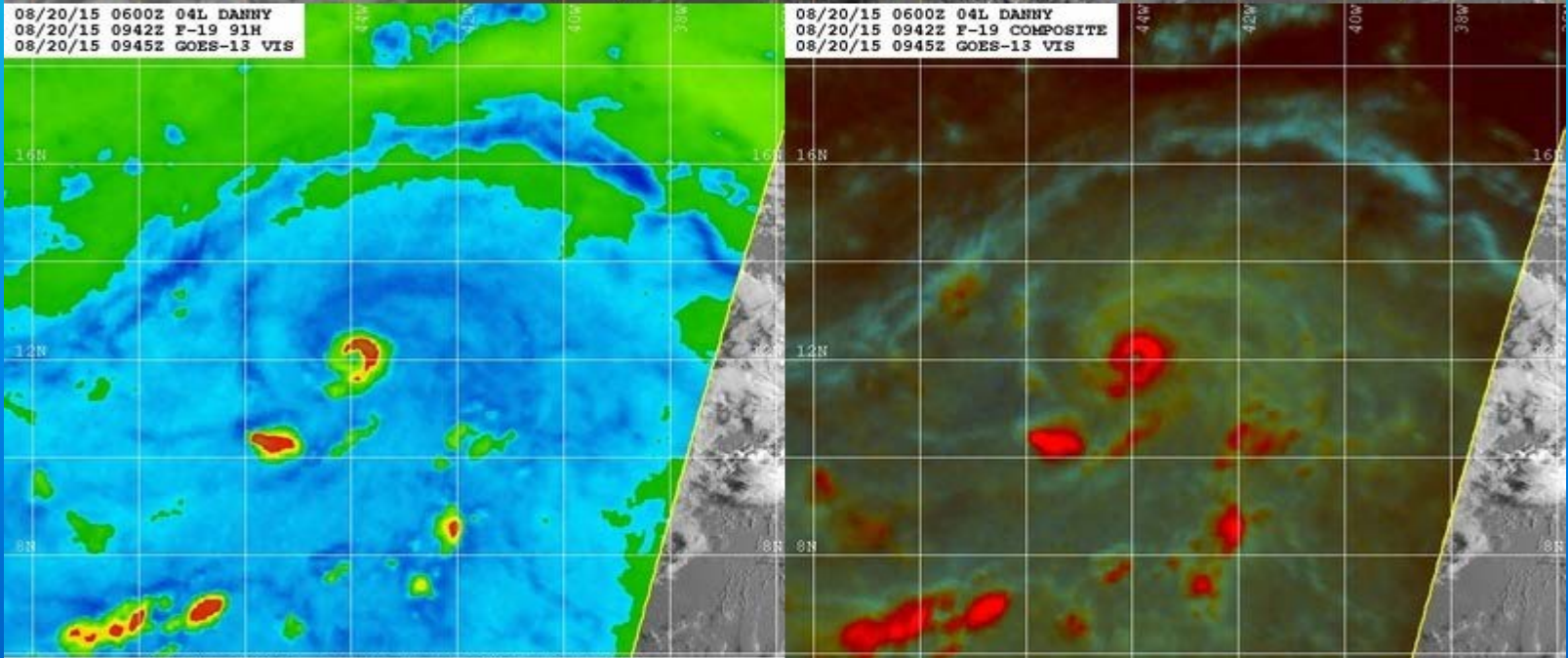
08/20/15 0600Z 04L DANNY
08/20/15 0942Z F-19 OVERPASS
08/20/15 0915Z GOES-13 IR

08/20/15 0600Z 04L DANNY
08/20/15 0942Z F-19 OVERPASS
08/20/15 0945Z GOES-13 VIS



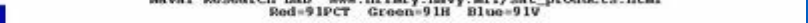
08/20/15 0600Z 04L DANNY
08/20/15 0942Z F-19 91H
08/20/15 0945Z GOES-13 VIS

08/20/15 0600Z 04L DANNY
08/20/15 0942Z F-19 COMPOSITE
08/20/15 0945Z GOES-13 VIS

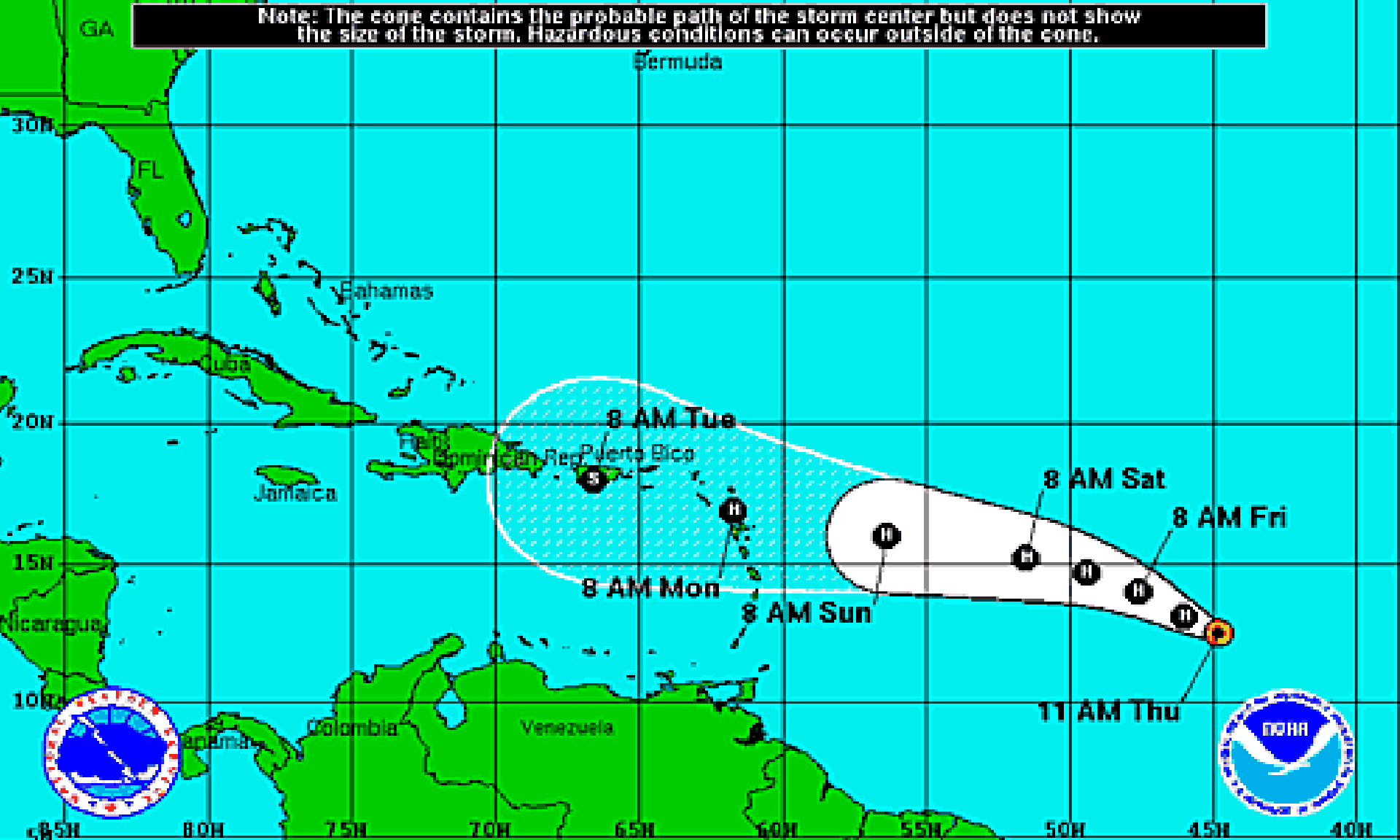


Naval Research Lab www.nrlmry.navy.mil/sat_products.html
85H Brightness Temp (Kelvin)


Naval Research Lab www.nrlmry.navy.mil/sat_products.html
Red=91PCT Green=91H Blue=91V







Note: The cone contains the probable path of the storm center but does not show the size of the storm. Hazardous conditions can occur outside of the cone.



Hurricane Danny
 Thursday August 20, 2015
 11 AM EDT Advisory 9
 NWS National Hurricane Center

Current Information: 
 Center Location 12.5 N 44.8 W
 Max Sustained Wind 75 mph
 Movement WNW at 12 mph

Forecast Positions:
 Tropical Cyclone  Post-Tropical
 Sustained Winds: D < 39 mph
 S 39-73 mph H 74-110 mph M > 110mph

Potential Track Area:
 Day 1-3  Day 4-5

Watches:
 Hurricane  Trop.Storm

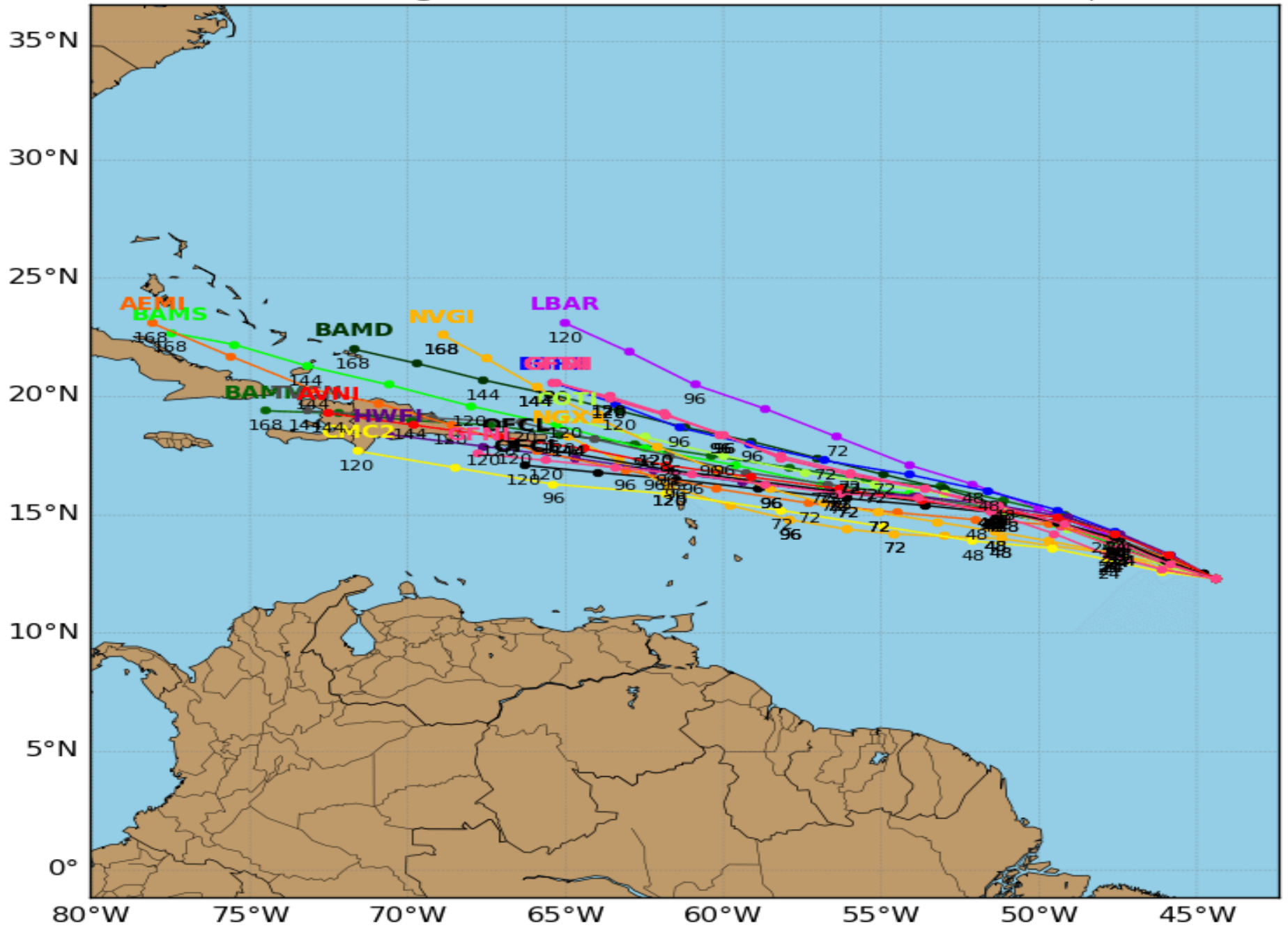
Warnings:
 Hurricane  Trop.Storm

Hurricane

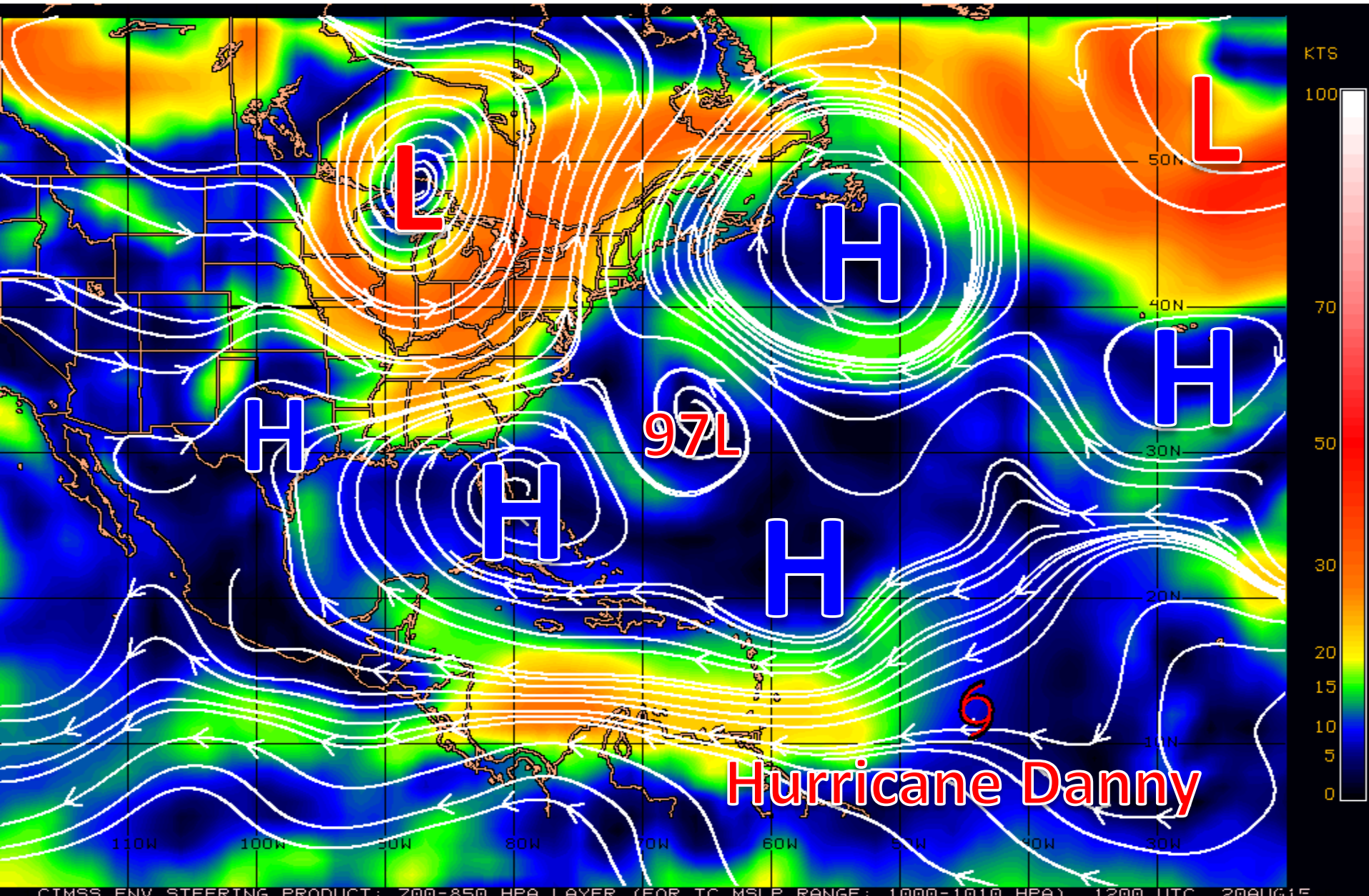
DANNY Model Track Guidance

Initialized at 12z Aug 20 2015

Levi Cowan - tropicaltidbits.com



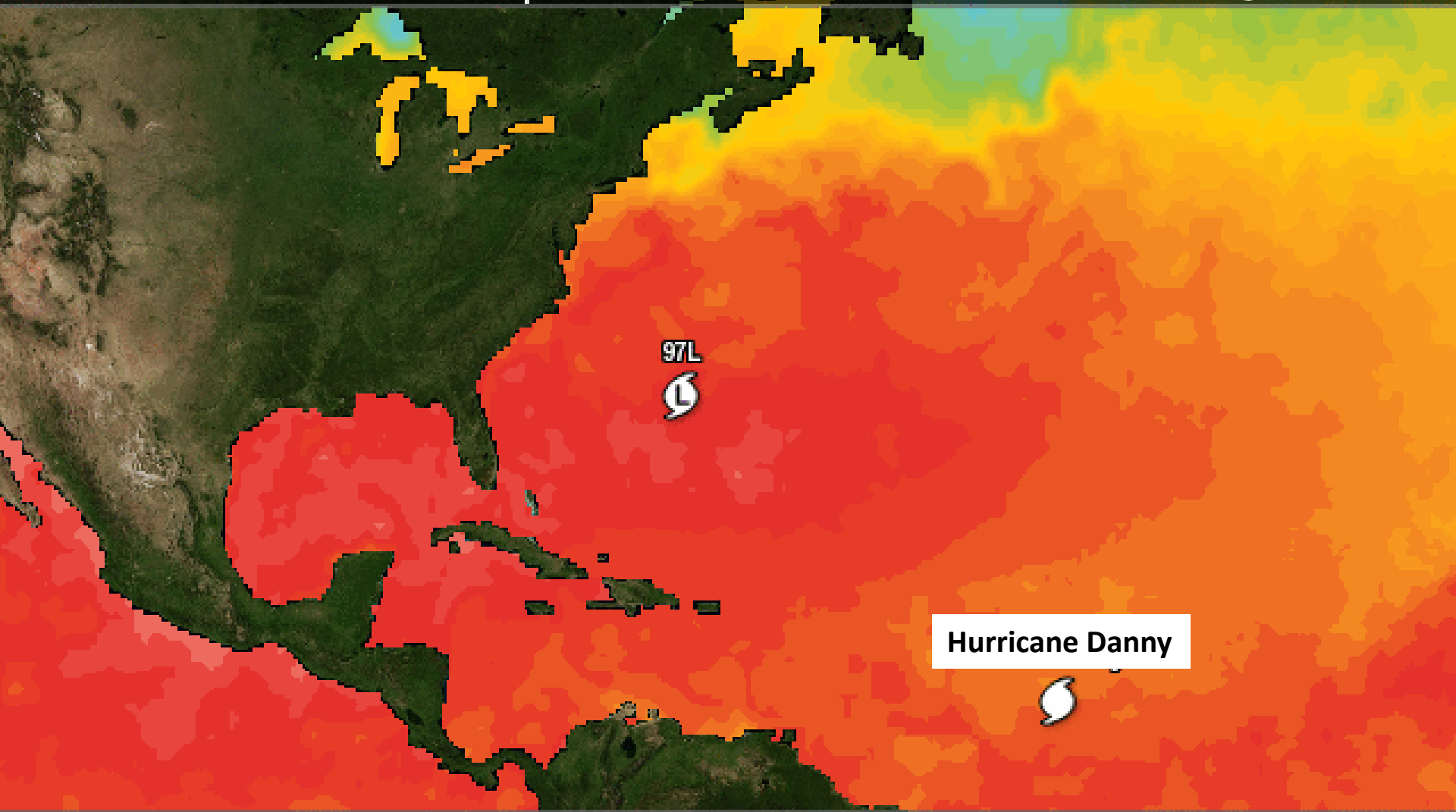
Steering Currents



Sea Surface Temperatures

Northern Atlantic Sea Surface Temperature

Generated Thu Aug 20 10:10 EDT 2015



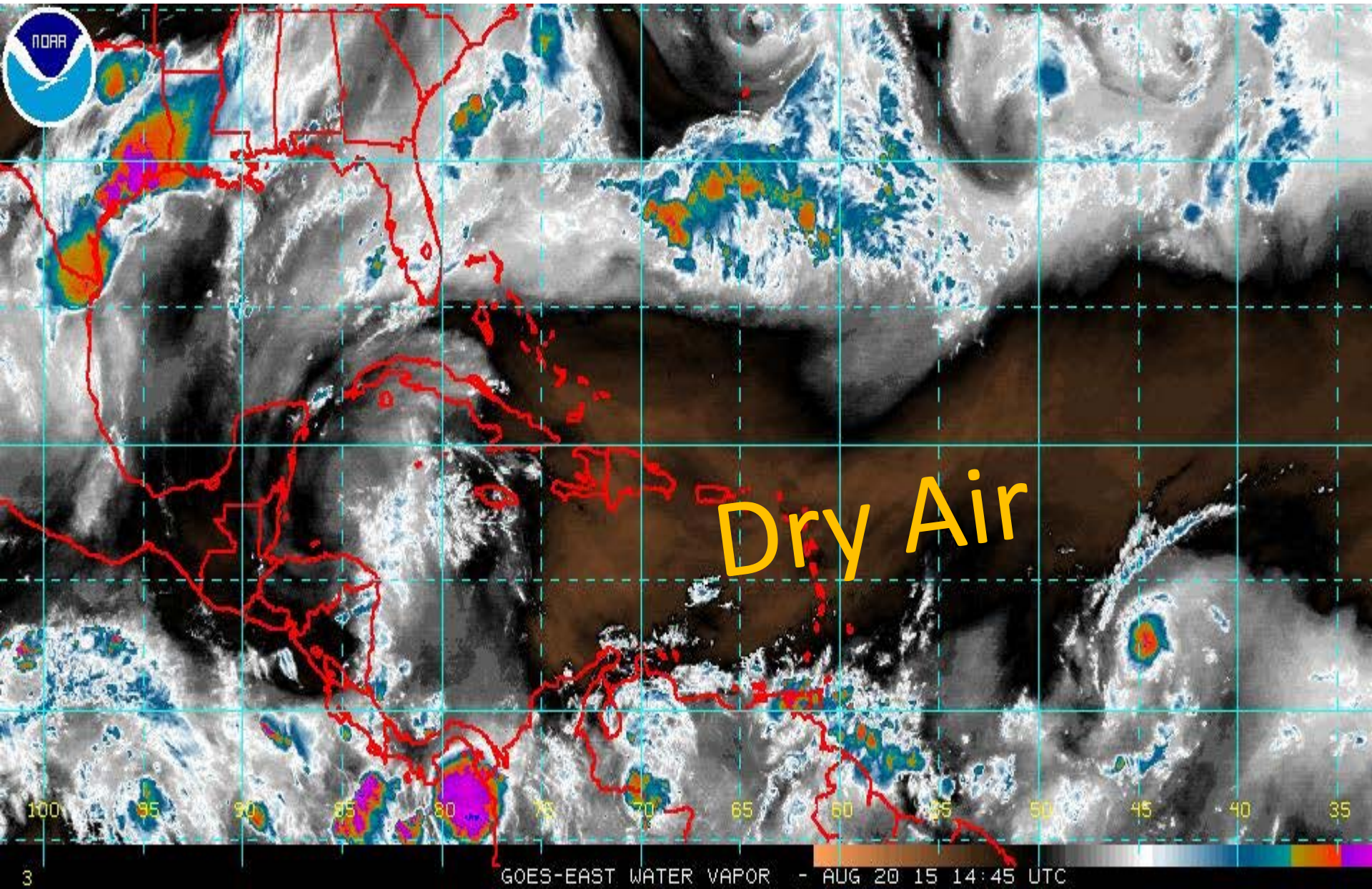
Hurricane Danny

-2.0 2.0 6.0 10.0 14.0 18.0 22.0 26.0 30.0 34.0 > °C

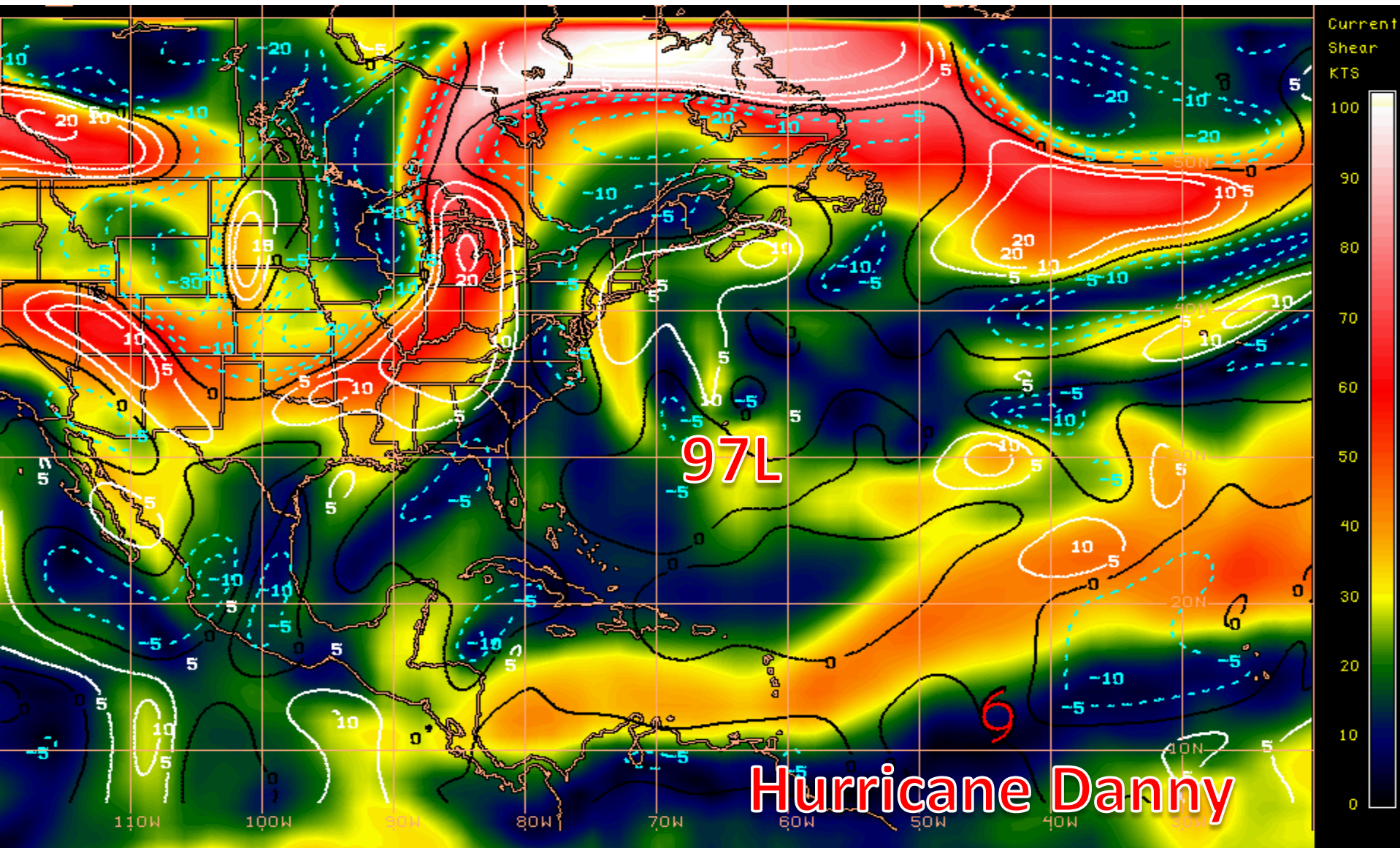


28.4 35.6 42.8 50.0 57.2 64.4 71.6 78.8 86.0 93.2 > °F

Water Vapor Satellite Image

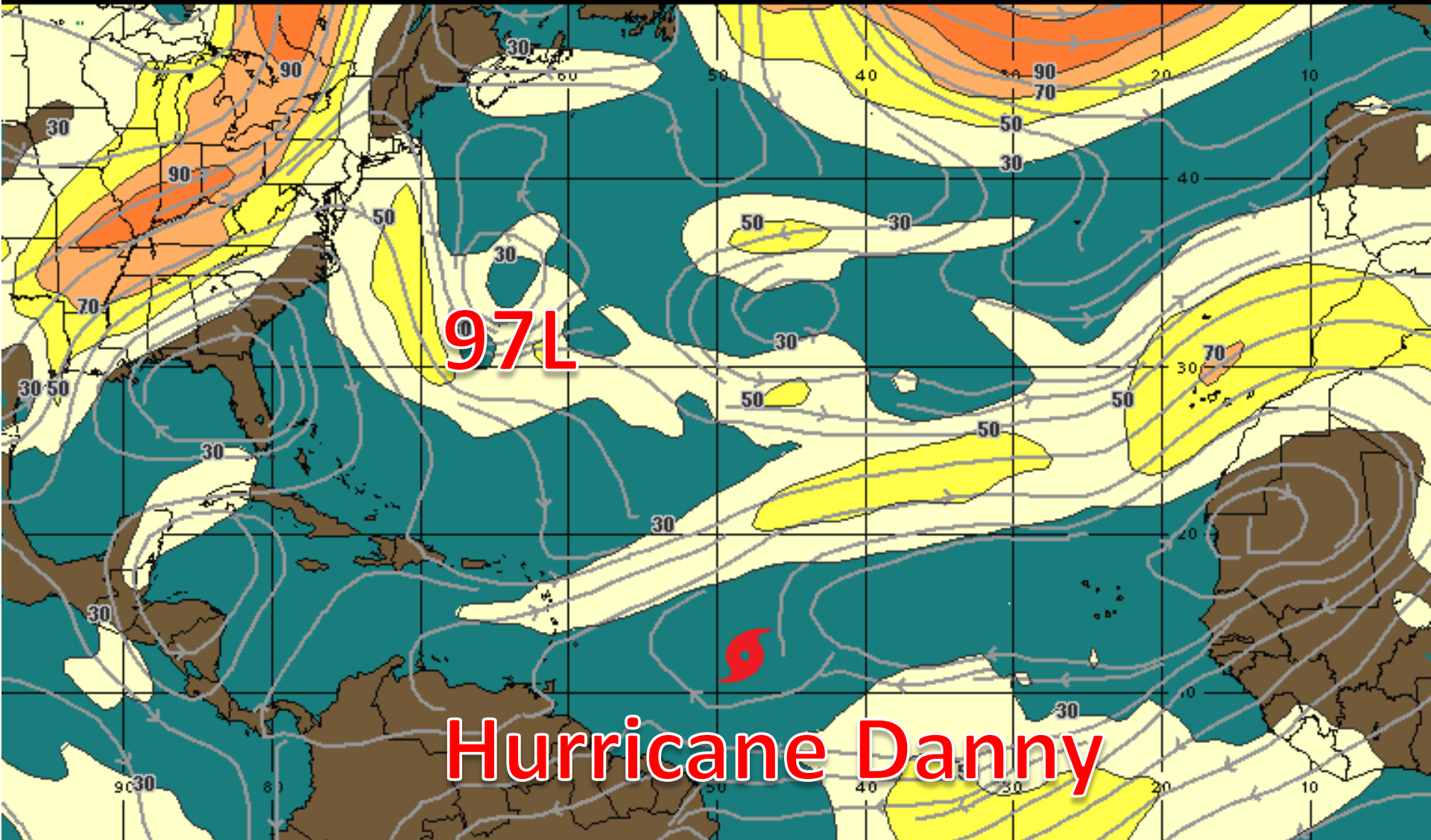


Current Wind Shear (shaded) and Shear Tendency (contours)



Forecast Wind Shear-24 hours (Friday)

00:00 21-AUG-2015 GMT ©Copyright WSI Corporation <http://www.wsi.com>



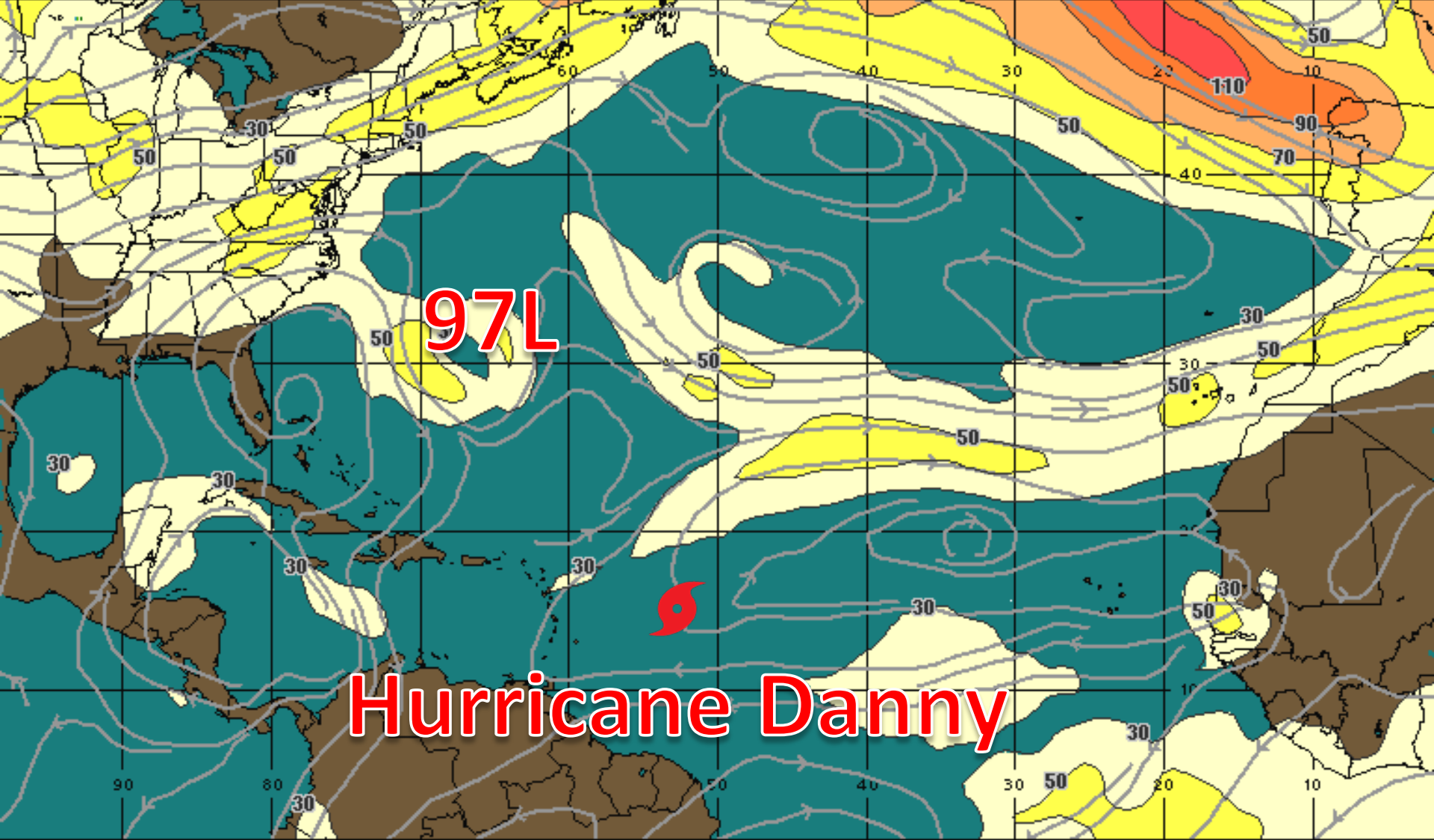
200Mb Wind Speed / Streamline Forecast
Valid 0000 UTC Fri 21-Aug-15

30 mph 50 70 90 110 130 150+

WSI®

Forecast Wind Shear-48 hours (Saturday)

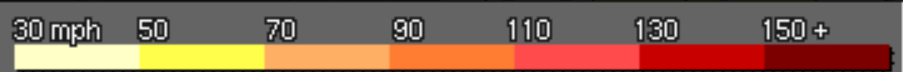
00:00 23-AUG-2015 GMT ©Copyright WSI Corporation <http://www.usi.com>



97L

Hurricane Danny

200Mb Wind Speed / Streamline Forecast
Valid 0000 UTC Sun 23-Aug-15



WSI

Invest 97L

8 AM Thu Aug 20 2015

Position 30.0 68.0 W

Maximum Winds 25 mph

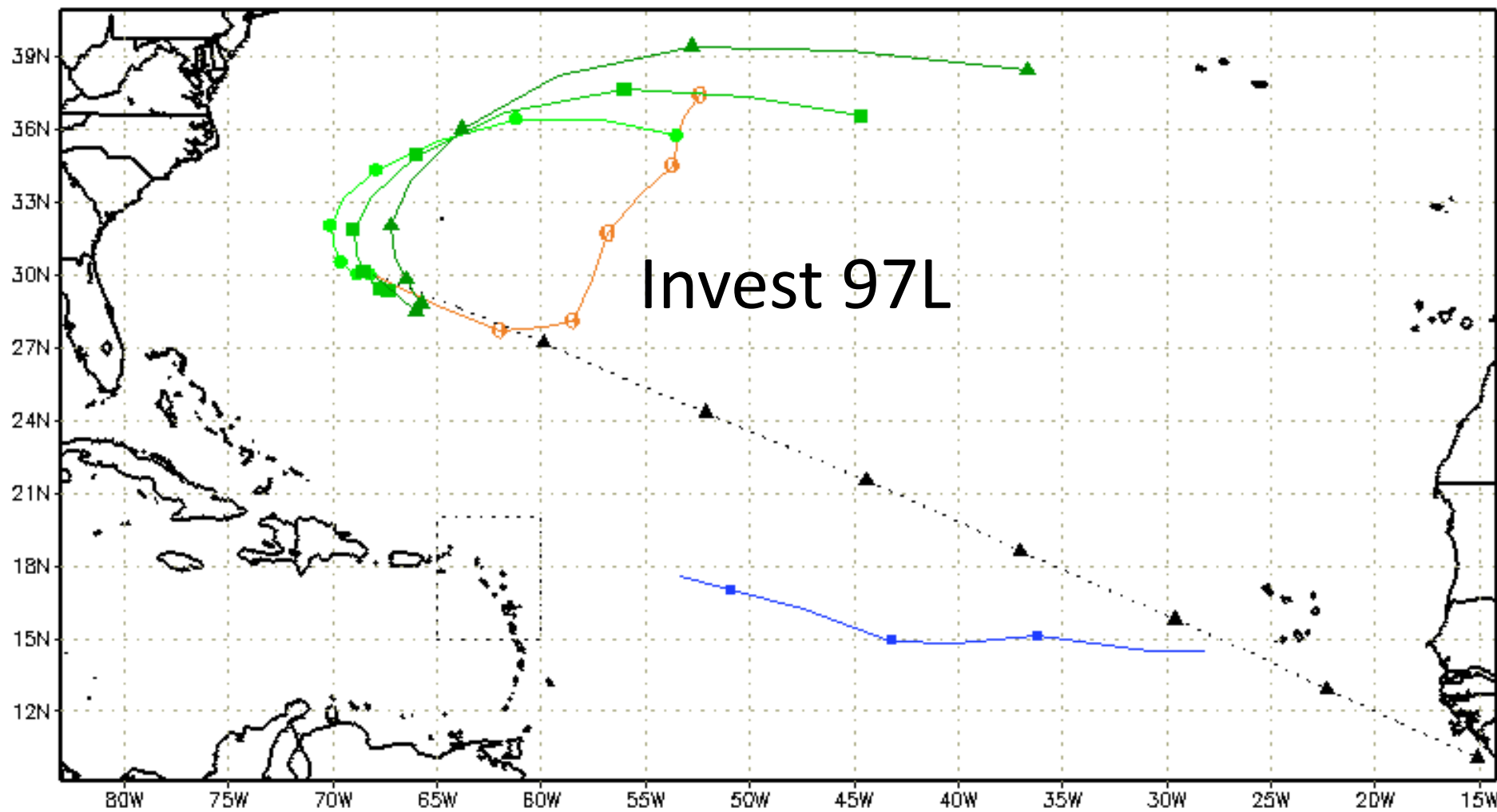
Movement ESE at 20 mph

Blue Marble basemap imagery courtesy NASA

Satellite 2:05 PM UTC



- ▲ XTRP 20/1200Z
- TVCN Not Avail
- TV15 Not Avail
- NHC Not Avail
- ▲ BAMD 20/1200Z
- BAMB 20/1200Z
- BAMS 20/1200Z
- ▲ GFDL Not Avail
- GFDN Not Avail
- HWRP Not Avail
- AHWI Not Avail
- ▲ AVNO Not Avail
- AEMN Not Avail
- APxx Not Avail
- FIM9 Not Avail
- ▲ CMC Not Avail
- UKM 20/0000Z
- NGX Not Avail
- GLP5 20/1200Z



storm_97
 sfwmd.gov
 weather@sfwmd.gov
 20-Aug 10:21EDT

NHC Advisories and County Emergency Management Statements supersede this product. This graphic should complement, not replace, NHC discussions. If anything on this graphic causes confusion, ignore the entire product. For full info, see <http://my.sfwmd.gov/sfwmd/common/images/weather/plots.html>



Outlook:

- Tropical Storm Danny was upgraded to a category one hurricane with maximum sustained winds of 75 mph by the National Hurricane Center at 11am.
- Hurricane Danny is currently located in the East-Central Atlantic, about 2, 500 miles southeast of Miami, and is moving west-northwest at about 12 mph.
- The forecast track is expected to remain mostly west-northwestward over the next several days, with a slight turn to the west after about 4 or 5 days.
- Danny has developed an eye and is forecast to slowly strengthen over the next 36 hours or so before weakening due to increasing wind shear as it approaches the Lesser Antilles (Eastern Caribbean) over the next several days.
- Danny's small size makes it more susceptible to fluctuations in strength. Low wind shear over the storm indicates favorable conditions for further strengthening, while dry Saharan air to the west and north could stunt any further strengthening or even cause weakening.
- The NOAA Hurricane Hunters are planning to fly into Danny tomorrow afternoon.
- Elsewhere, Invest 97L is a low pressure area currently producing showers and thunderstorms off the U.S. East Coast.
- Conditions will be marginally favorable for this low pressure system to develop into a tropical system as it moves slowly northward.
- Further East, a tropical wave moving off the West African Coast has a 20% chance of development over the next 5 days.

Florida Outlook:

- It is still too early to tell whether Danny will have any impacts to Florida or the U.S.; however, Floridians are reminded to monitor this system and the tropics as the peak of the hurricane season approaches.
- Invest 97L is not expected to bring any impacts to Florida.
- For more information on this system visit the NHC website at www.nhc.noaa.gov



TROPICAL UPDATE

Created by:

Molly Merrifield, Assistant State Meteorologist

Molly.Merrifield@em.myflorida.com

State Meteorological Support Unit

Florida Division of Emergency
Management