

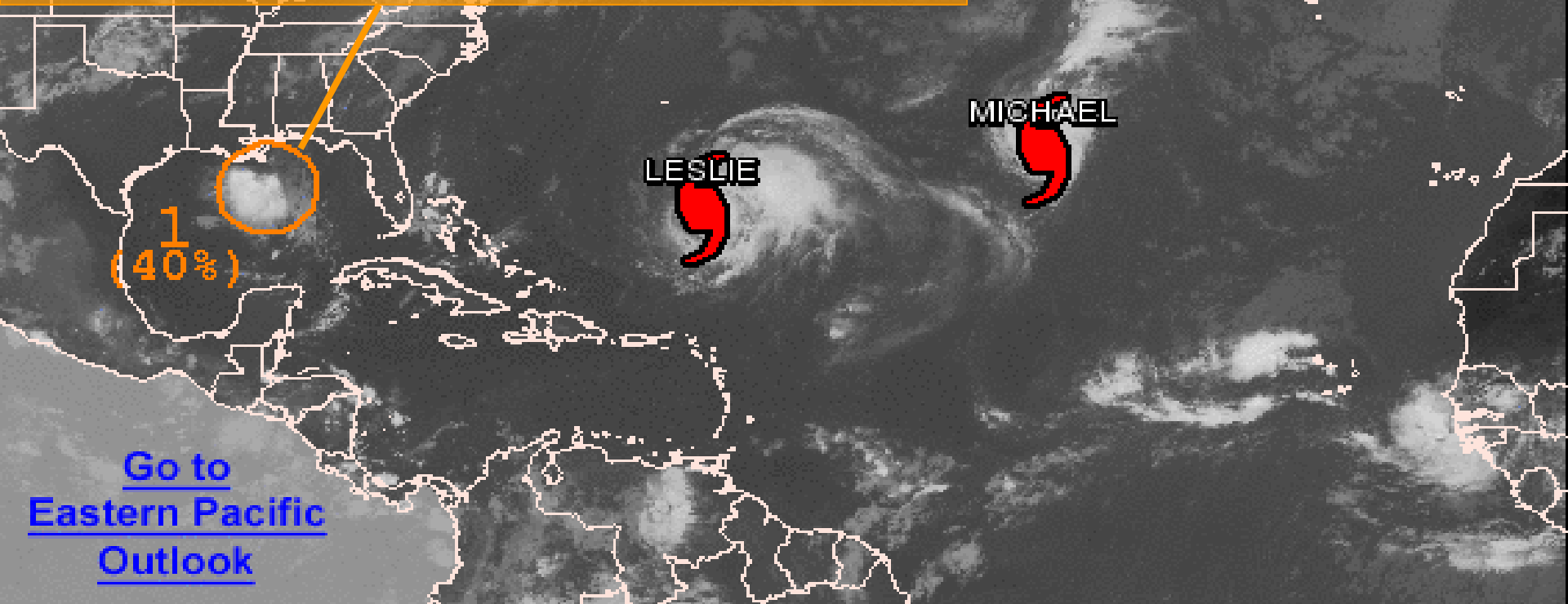


Graphical Tropical Weather Outlook

National Hurricane Center Miami, Florida



1. SHOWER ACTIVITY ASSOCIATED WITH A BROAD AREA OF LOW PRESSURE LOCATED OVER THE NORTH-CENTRAL GULF OF MEXICO HAS NOT BECOME ANY BETTER ORGANIZED SINCE YESTERDAY...AND IF THIS TREND CONTINUES...THE RECONNAISSANCE MISSION SCHEDULED FOR LATER TODAY WILL BE CANCELLED. THIS WEATHER SYSTEM IS DRIFTING SOUTHWARD AND STILL HAS THE POTENTIAL FOR SOME DEVELOPMENT DURING THE NEXT DAY OR SO BEFORE ENVIRONMENTAL CONDITIONS BECOME UNFAVORABLE. THIS SYSTEM HAS A MEDIUM CHANCE...40 PERCENT...OF BECOMING A TROPICAL CYCLONE DURING THE NEXT 48 HOURS.



800 AM EDT THU SEP 6 2012

Satellite Image: 0652 AM EDT

Outlined areas denote current position of systems discussed in the Tropical Weather Outlook. Color indicates probability of tropical cyclone formation within 48 hours.



Low <30%



Medium 30-50%



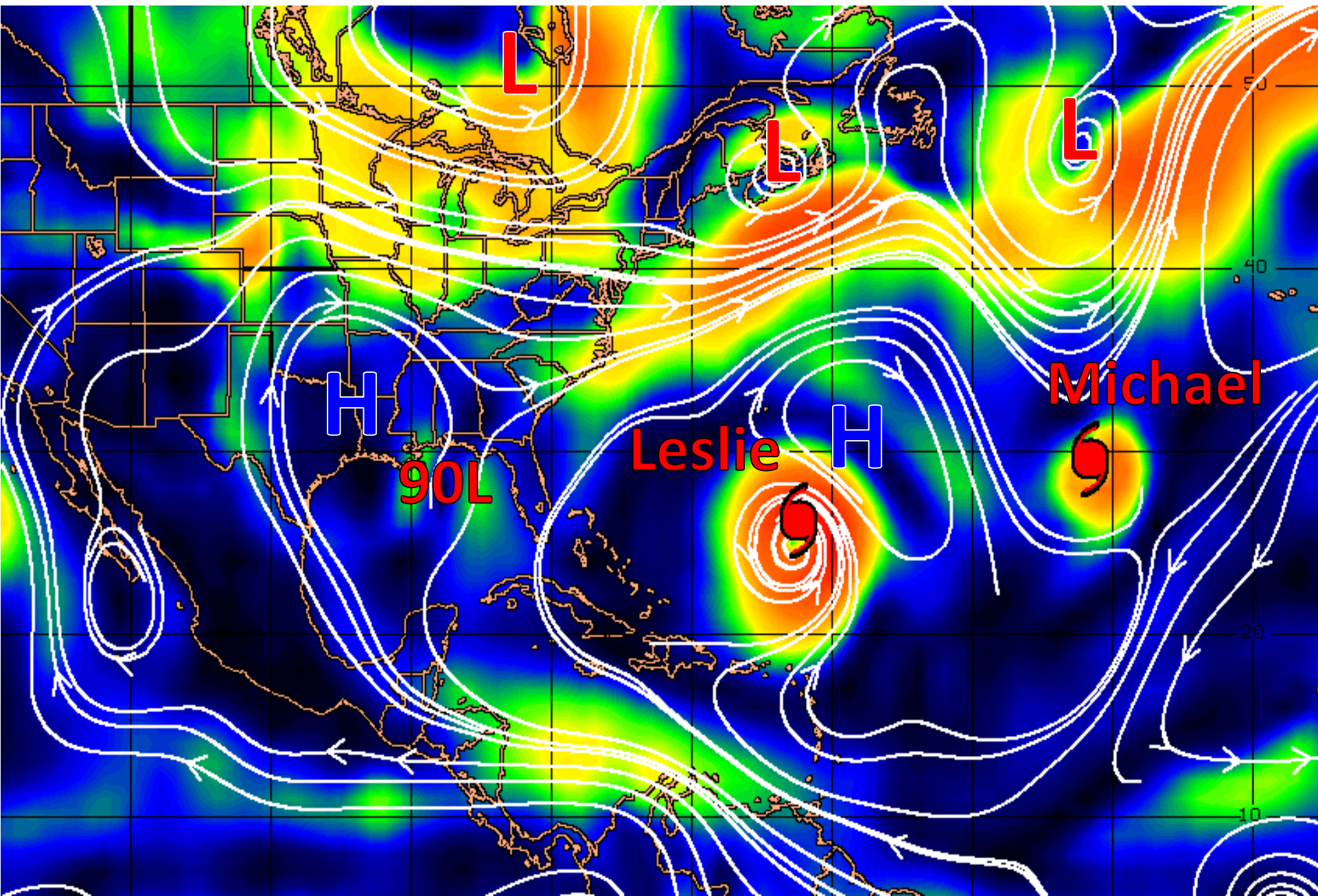
High >50%

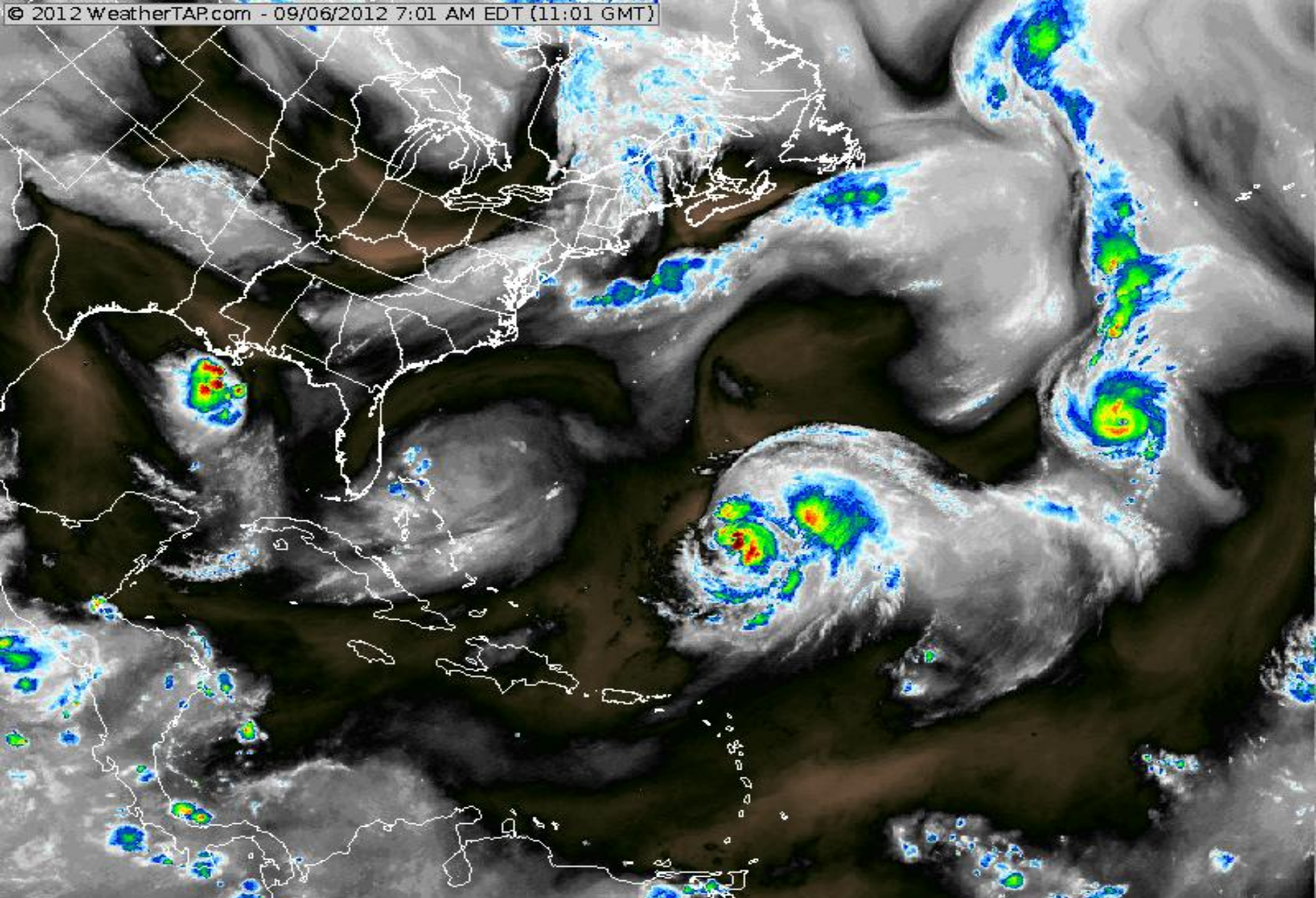
Atlantic Basin Satellite Image

09:00 06-SEP-2012 GMT ©Copyright WSI Corporation <http://www.wsi.com>



Steering Currents





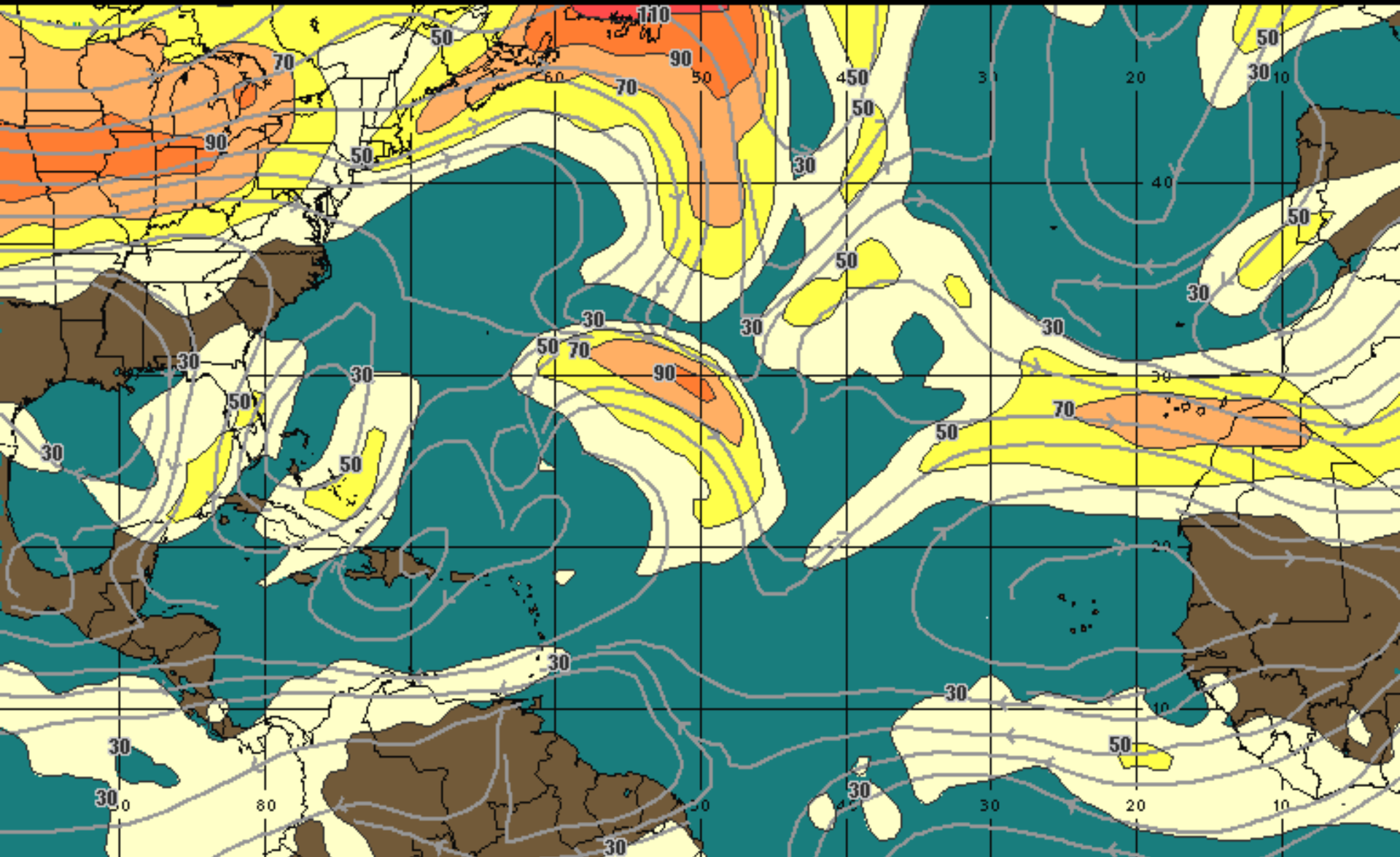
Dry

Saturated



Current Wind Shear

00:00 06-SEP-2012 GMT ©Copyright WSI Corporation <http://www.wsi.com>

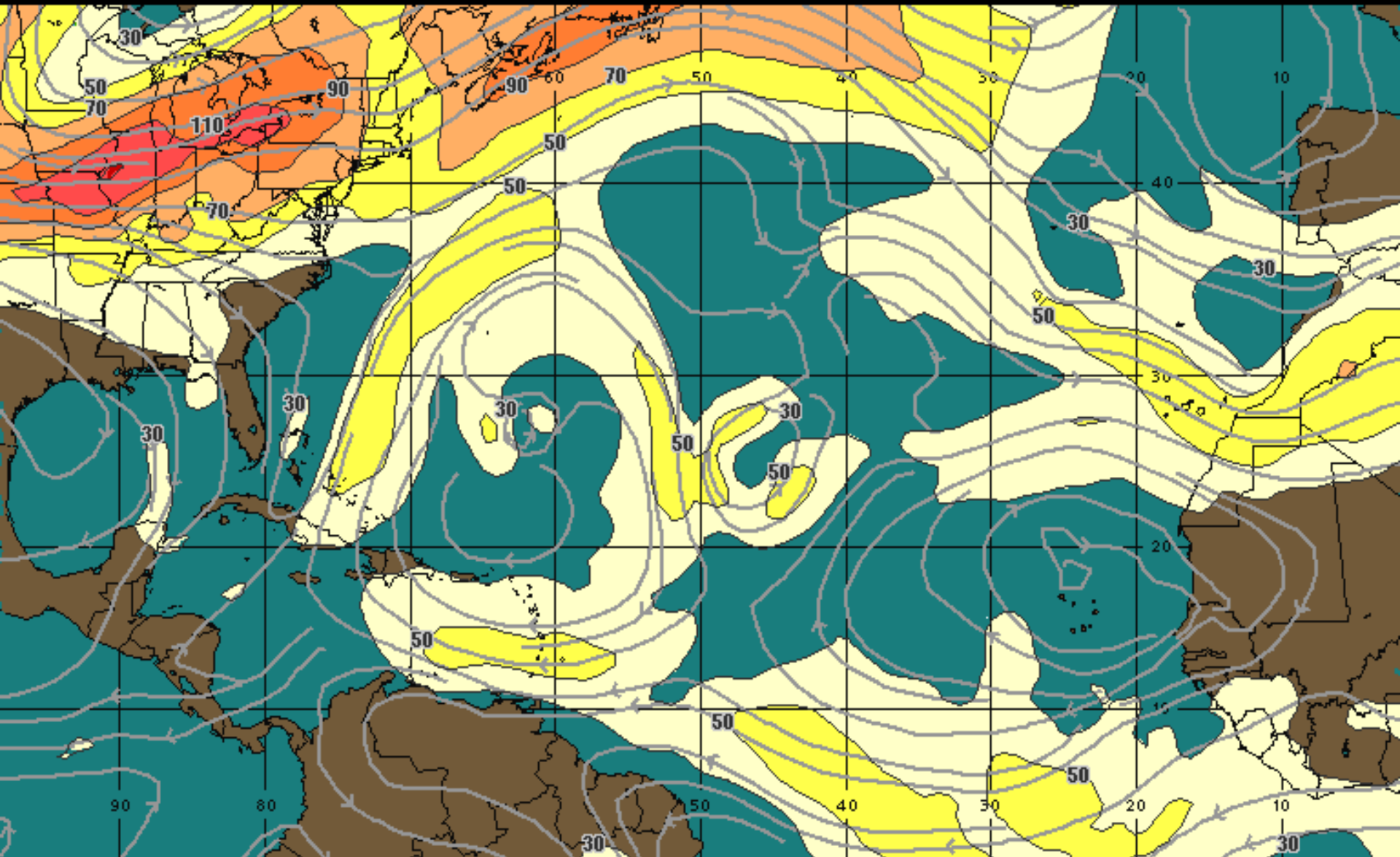


200Mb Wind Speed / Streamline Analysis
Valid 0000 UTC Thu 06-Sep-12

30 mph 50 70 90 110 130 150 +

36 Hour Forecast Wind Shear

00:00 08-SEP-2012 GMT ©Copyright WSI Corporation <http://www.wsi.com>

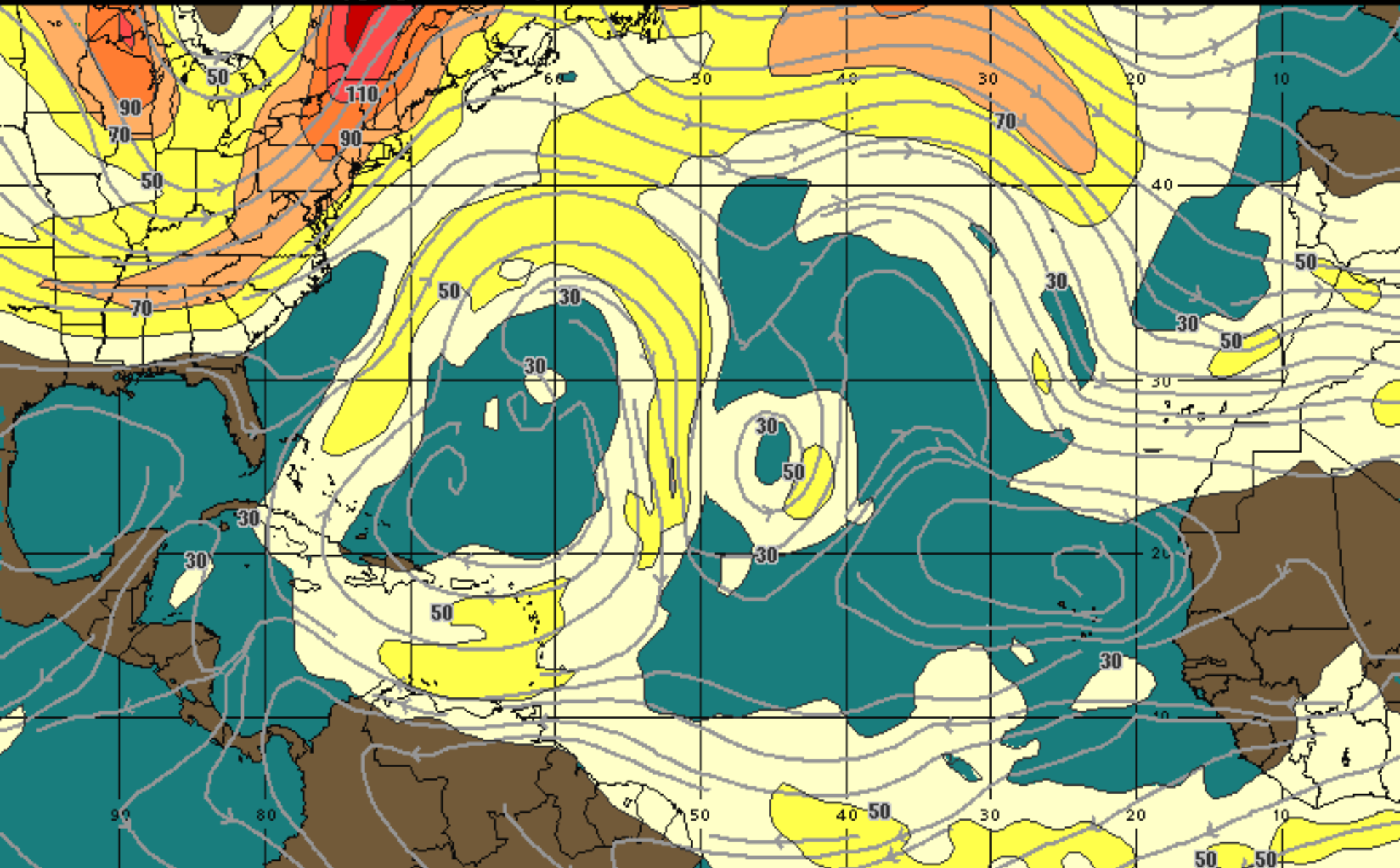


200Mb Wind Speed / Streamline Forecast
Valid 0000 UTC Sat 08-Sep-12

30 mph 50 70 90 110 130 150 +

60 Hour Forecast Wind Shear

00:00 09-SEP-2012 GMT ©Copyright WSI Corporation <http://www.wsi.com>



200Mb Wind Speed / Streamline Forecast
Valid 0000 UTC Sun 09-Sep-12

30 mph 50 70 90 110 130 150 +

WSI

Invest 90L

2 AM Thu Sep 6 2012

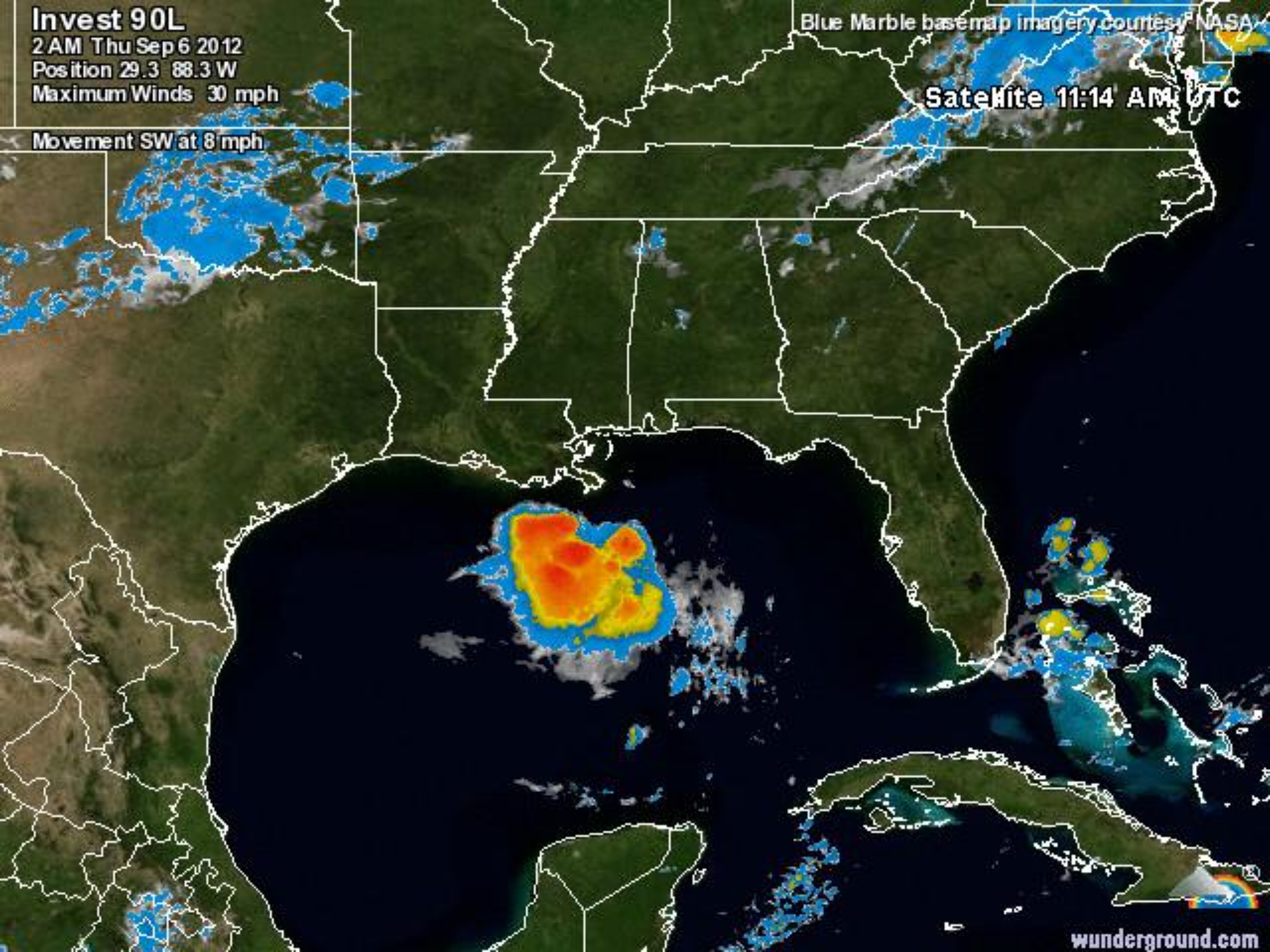
Position 29.3 88.3 W

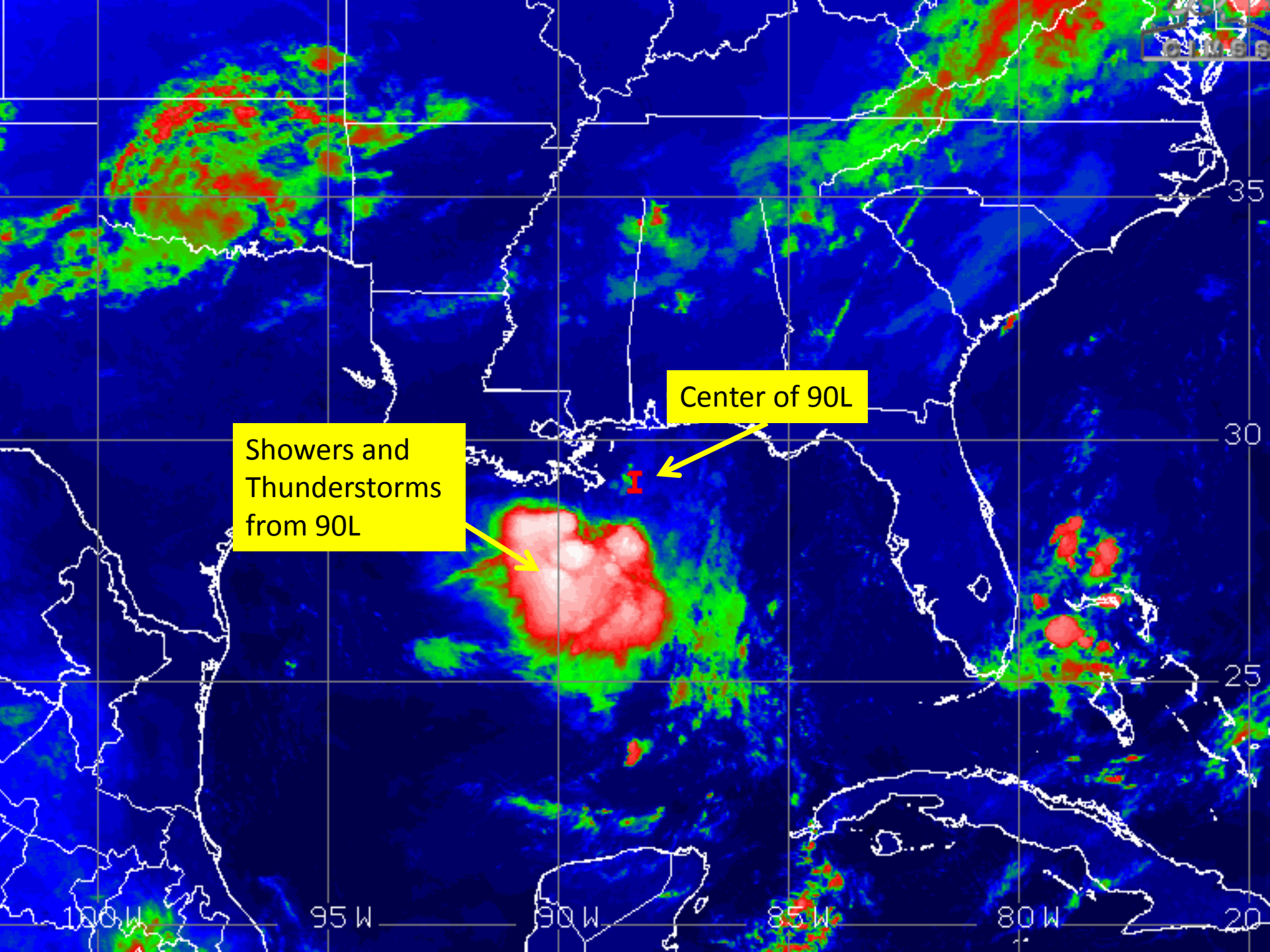
Maximum Winds 30 mph

Movement SW at 8 mph

Blue Marble basemap imagery courtesy NASA

SateHite 11:14 AM UTC



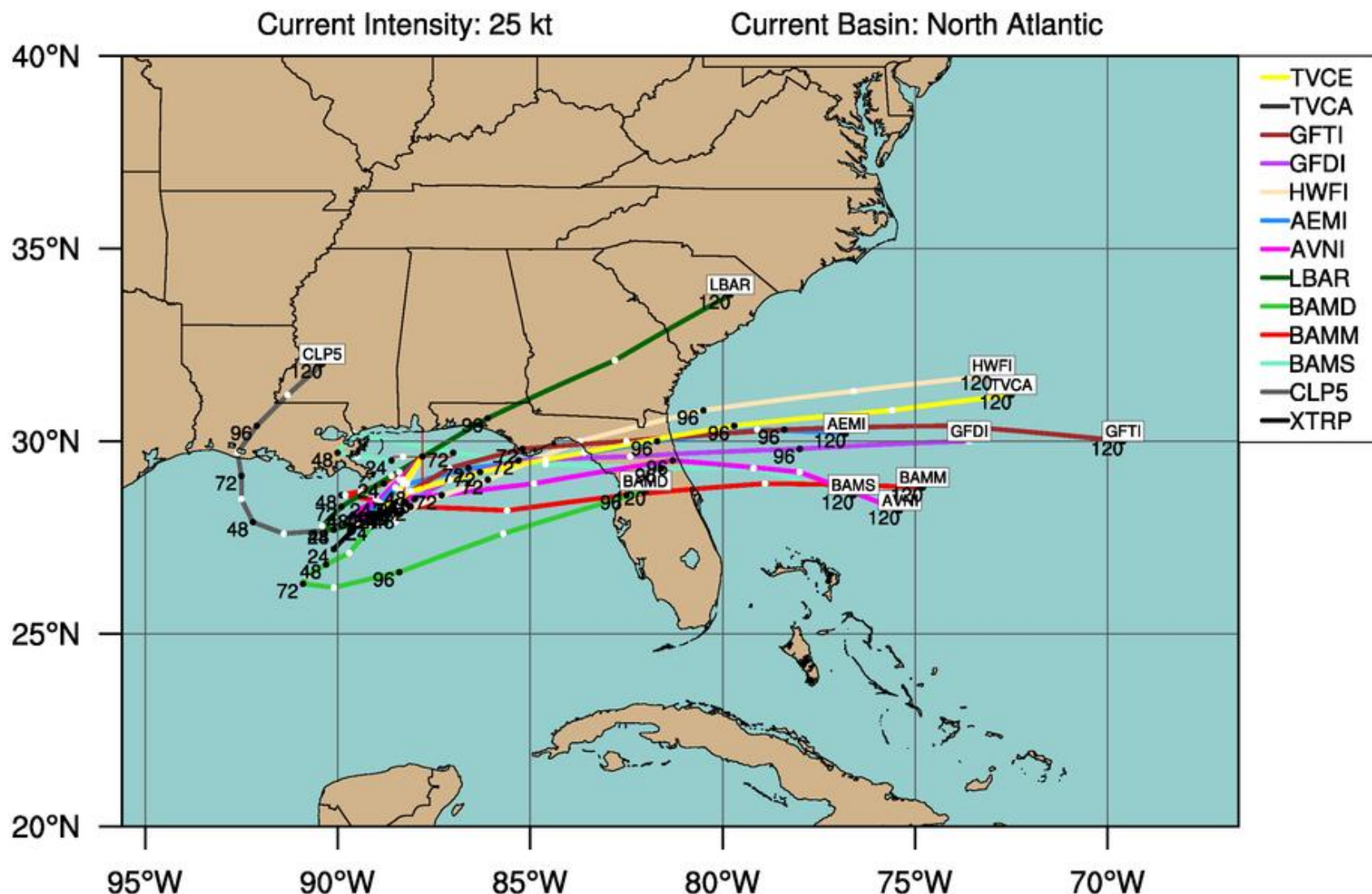


Center of 90L

Showers and
Thunderstorms
from 90L

LOW INVEST (AL90)

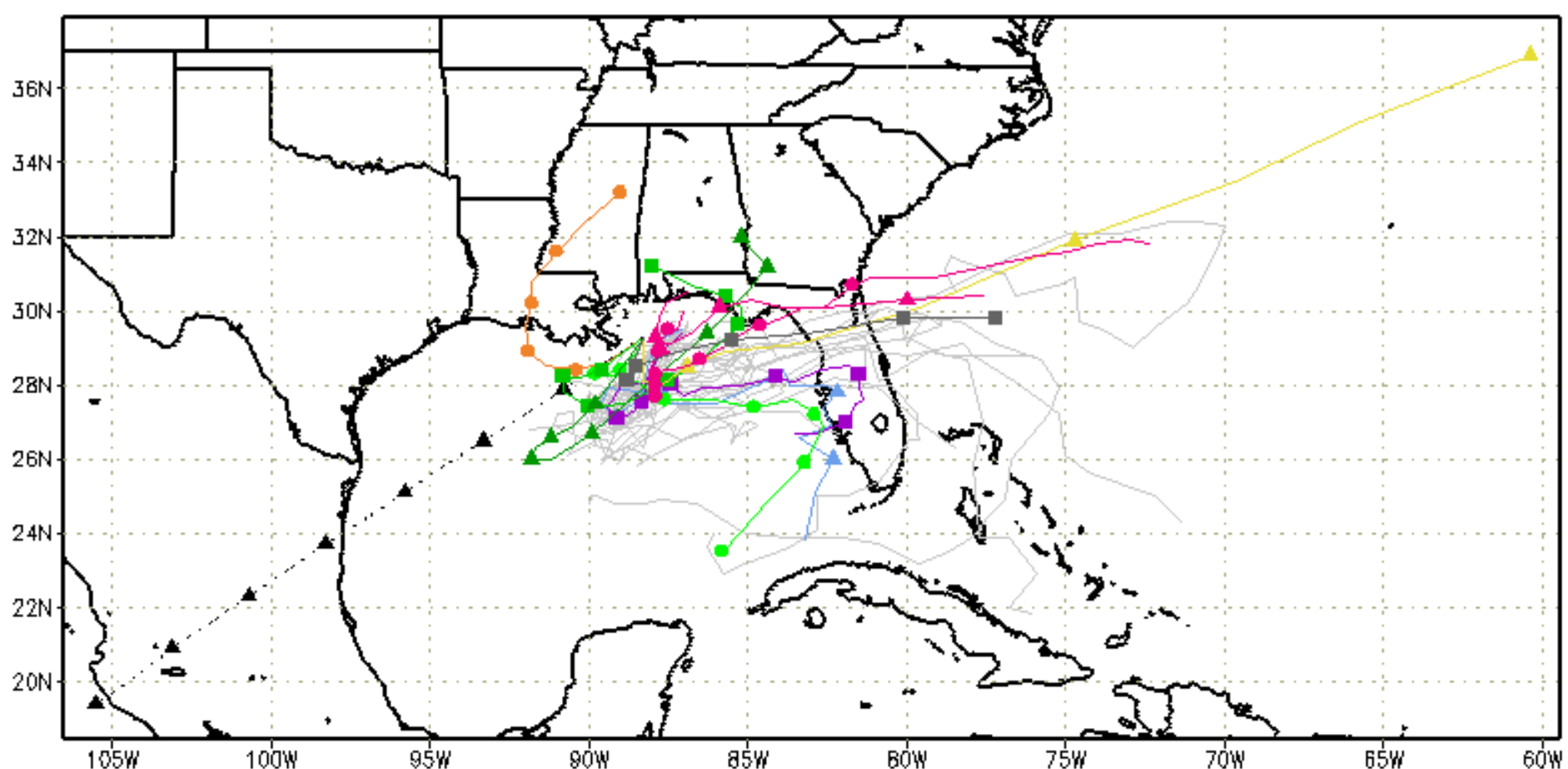
Early-cycle track guidance initialized at 0000 UTC, 06 September 2012



By using this plot, the user agrees to the UCAR Terms of Use
which can be accessed at: <http://www2.ucar.edu/terms-of-use>

Plot generated at 0152 UTC 06 September 2012

--▲-- XTRP 06/0600Z	▲ BAMD 06/0600Z	▲ GFDL 05/1800Z	▲ AVNO 06/0000Z	▲ CMC 06/0600Z
■ TVCN 06/0600Z	■ BAMB 06/0600Z	■ UKM 06/0000Z	■ AEMN 06/0000Z	■ APxx 06/0000Z
● NHC Not Avail	● BAMS 06/0600Z	● NGPS Not Avail	● HWRF 05/1800Z	● GLP5 06/0600Z

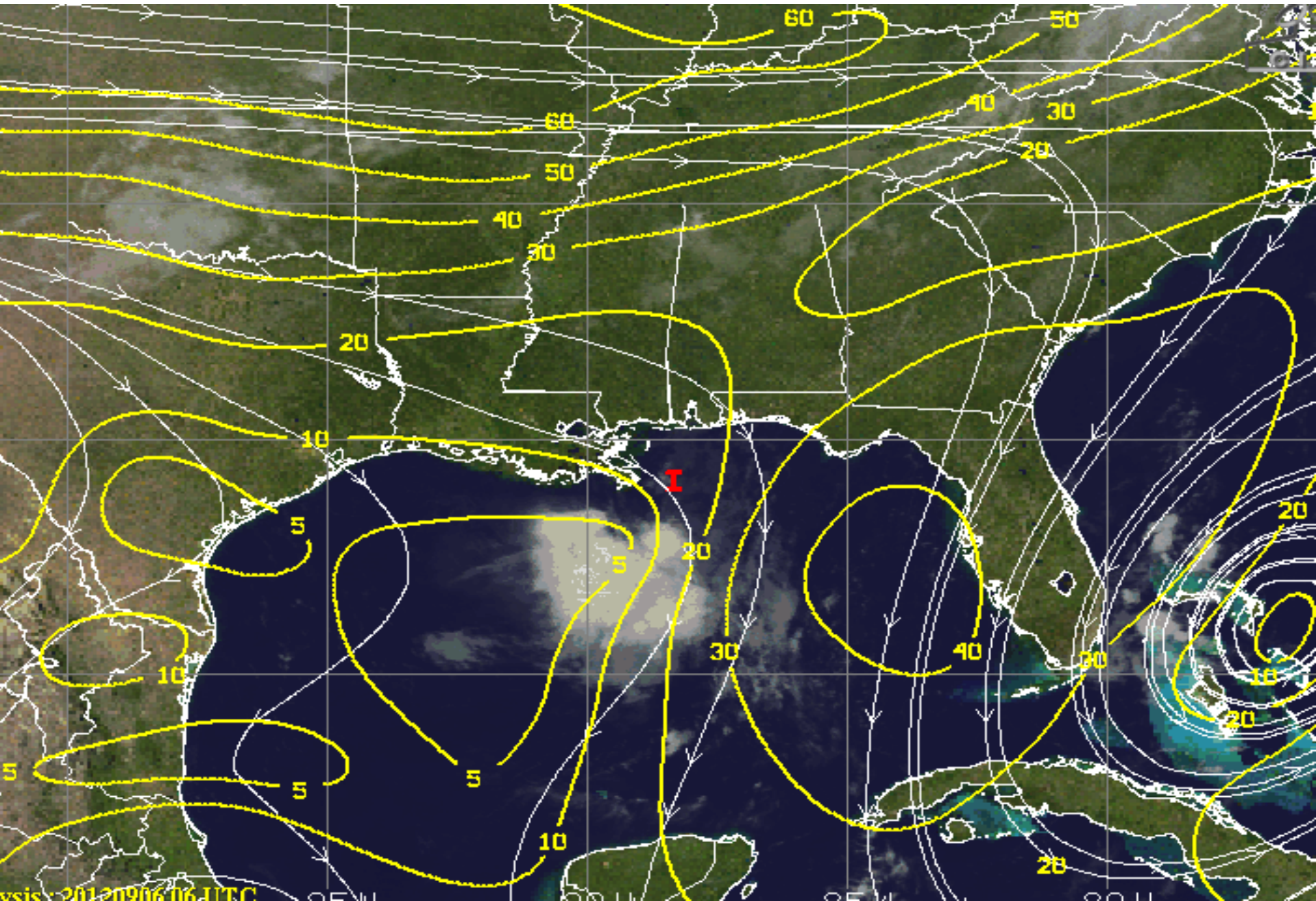


storm_90
 sfwmd.gov
 weather@sfwmd.gov
 06-Sep 07:06EDT

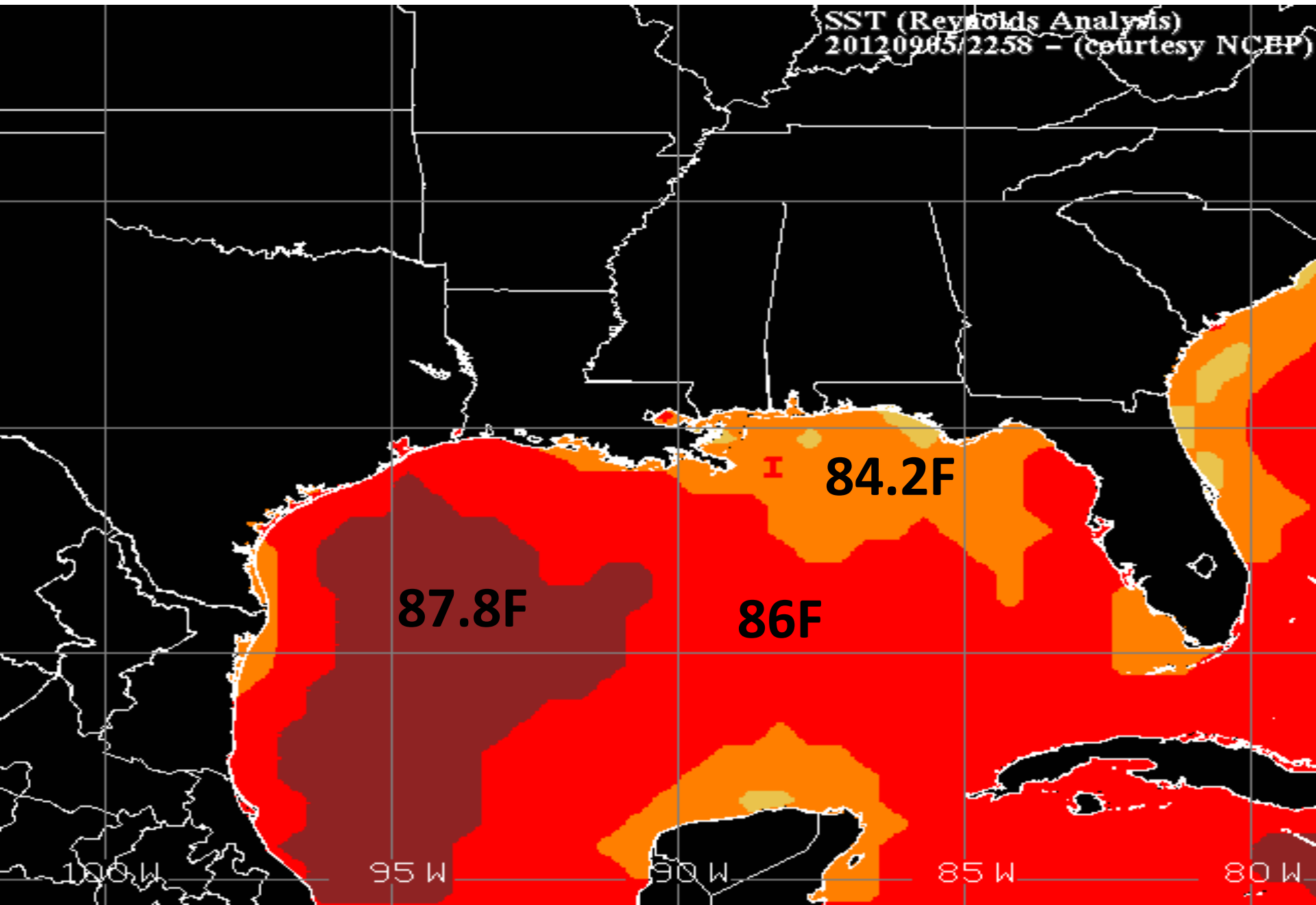
NHC Advisories and County Emergency Management Statements supersede this product. This graphic should complement, not replace, NHC discussions. If anything on this graphic causes confusion, ignore the entire product. For full info, see <http://my.sfwmd.gov/sfwmd/common/images/weather/plots.html>



Wind Shear in the Gulf of Mexico



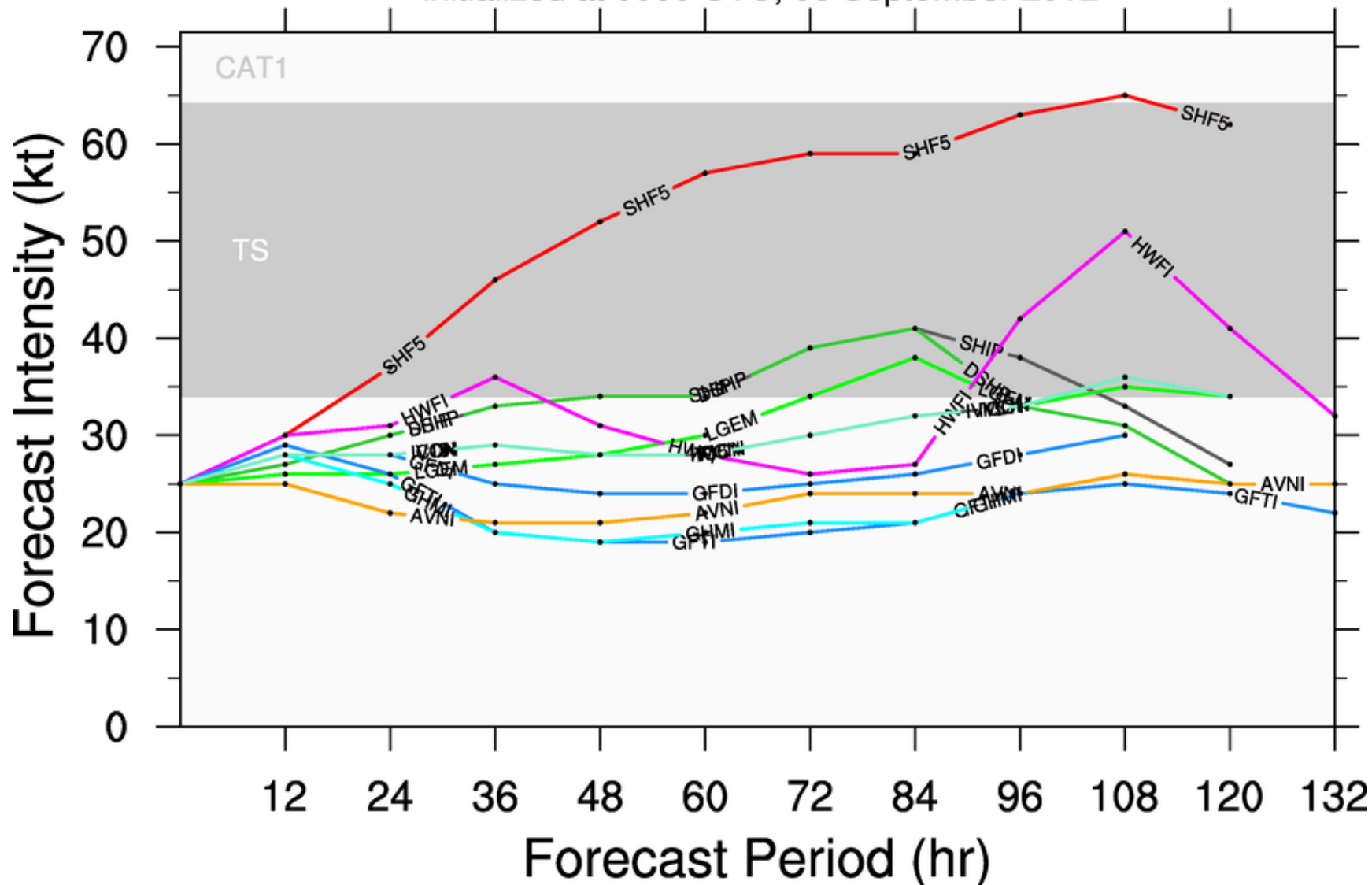
Sea Surface Temperatures in the Gulf of Mexico



LOW INVEST (AL90)

Early-cycle intensity guidance

initialized at 0000 UTC, 06 September 2012



By using this plot, the user agrees to the UCAR Terms of Use
which can be accessed at: <http://www2.ucar.edu/terms-of-use>

Plot generated at 0152 UTC 06 September 2012

Hurricane Leslie

5 AM EDT Thu Sep 06 2012

Position 26.3 N 62.4 W

Maximum Winds 75 mph

Gusts 90 mph

Movement N at 1 mph

Minimum Pressure 985 mb (29.08 inches)

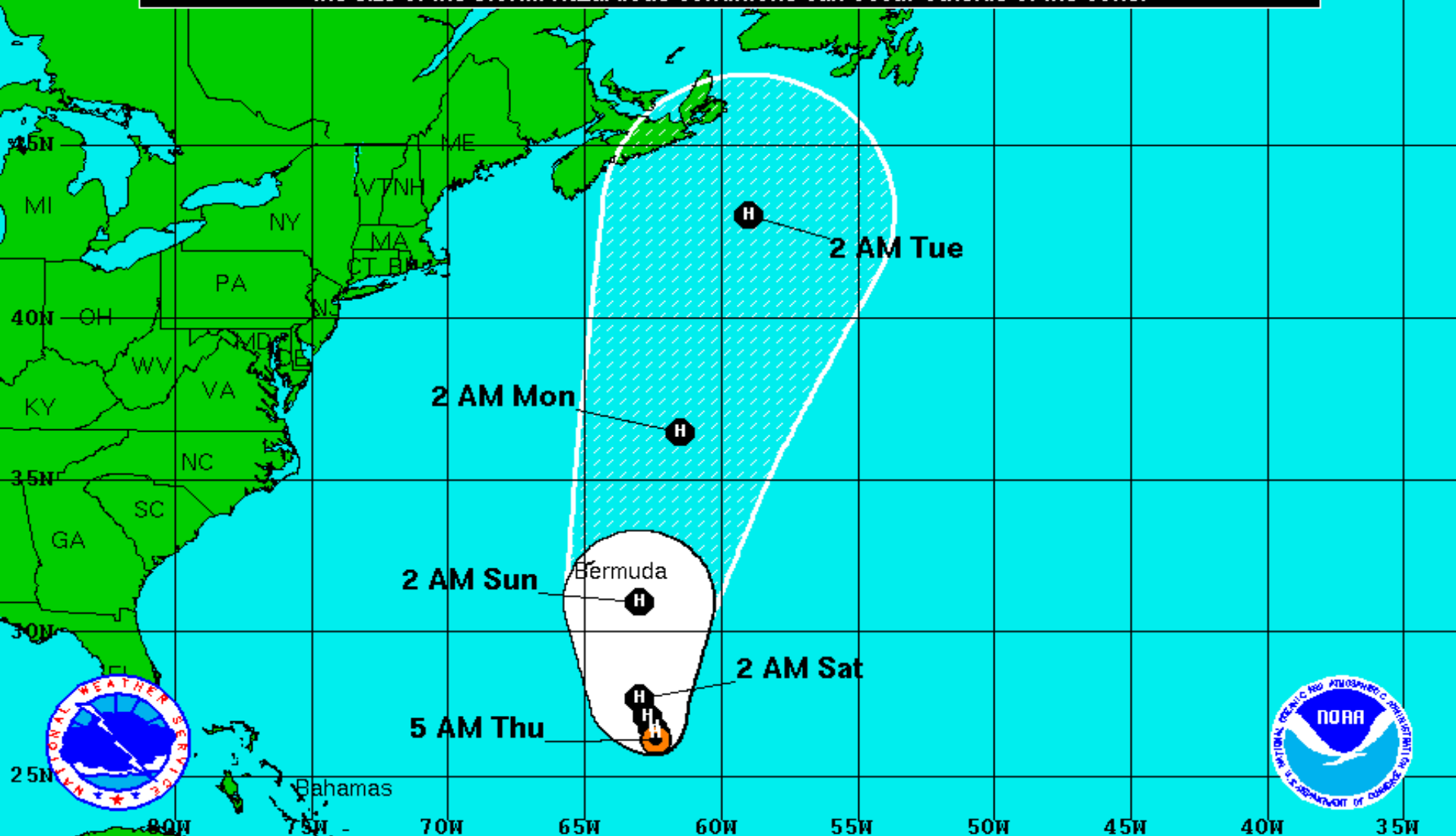
Blue Marble basemap imagery courtesy NASA

Satellite 11:14 AM UTC
7:14 AM EDT






wunderground.com

Note: The cone contains the probable path of the storm center but does not show the size of the storm. Hazardous conditions can occur outside of the cone.



Hurricane Leslie
 Thursday September 6, 2012
 5 AM EDT Advisory 28
 NWS National Hurricane Center

Current Information: 
 Center Location 26.3 N 62.4 W
 Max Sustained Wind 75 mph
 Movement N at 1 mph

Forecast Positions:
 Tropical Cyclone  Post-Tropical
 Sustained Winds: D < 39 mph
 S 39-73 mph H 74-110 mph M > 110mph

Potential Track Area:
 Day 1-3  Day 4-5

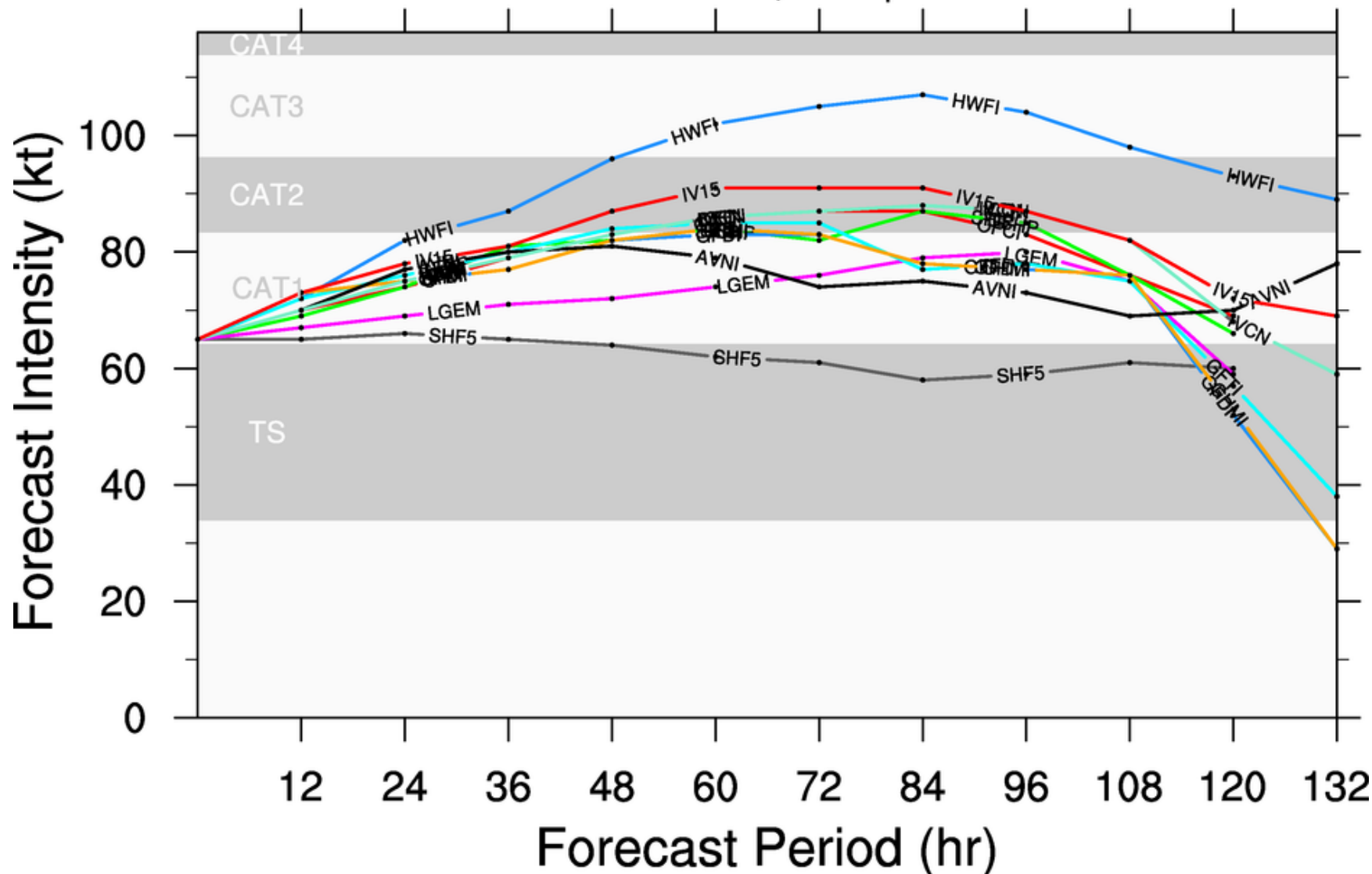
Watches:
 Hurricane  Trop.Storm

Warnings:
 Hurricane  Trop.Storm

HURRICANE LESLIE (AL12)

Early-cycle intensity guidance

initialized at 0600 UTC, 06 September 2012



By using this plot, the user agrees to the UCAR Terms of Use
which can be accessed at: <http://www2.ucar.edu/terms-of-use>

Plot generated at 0752 UTC 06 September 2012



Intensity (Maximum Wind Speed) Probability Table
Hurricane Leslie Advisory Number 28
5:00 AM AST Sep 6 2012



Wind Range (mph)	Forecast Time						
	12 hour for 2 PM Thu	24 hour for 2 AM Fri	36 hour for 2 PM Fri	48 hour for 2 AM Sat	72 hour for 2 AM Sun	96 hour for 2 AM Mon	120 hour for 2 AM Tue
Dissipated	<1%	<1%	<1%	<1%	<1%	1%	2%
Tropical Depression (<39)	<1%	1%	1%	1%	2%	2%	8%
Tropical Storm (39-73)	26%	22%	20%	20%	20%	24%	43%
Hurricane (all categories)	74%	77%	80%	80%	78%	73%	46%
-- Category 1 (74-95)	67%	59%	50%	43%	38%	37%	31%
-- Category 2 (96-110)	5%	14%	21%	23%	22%	21%	11%
-- Category 3 (111-130)	1%	4%	7%	12%	14%	12%	3%
-- Category 4 (131-155)	<1%	1%	2%	3%	3%	2%	1%
-- Category 5 (>155)	<1%	<1%	<1%	<1%	<1%	<1%	<1%
Forecast Maximum Wind	80 mph	85 mph	90 mph	100 mph	105 mph	105 mph	90 mph

Hurricane Michael

5 AM EDT Thu Sep 06 2012

Position 29.6 N 41.7 W

Maximum Winds 115 mph

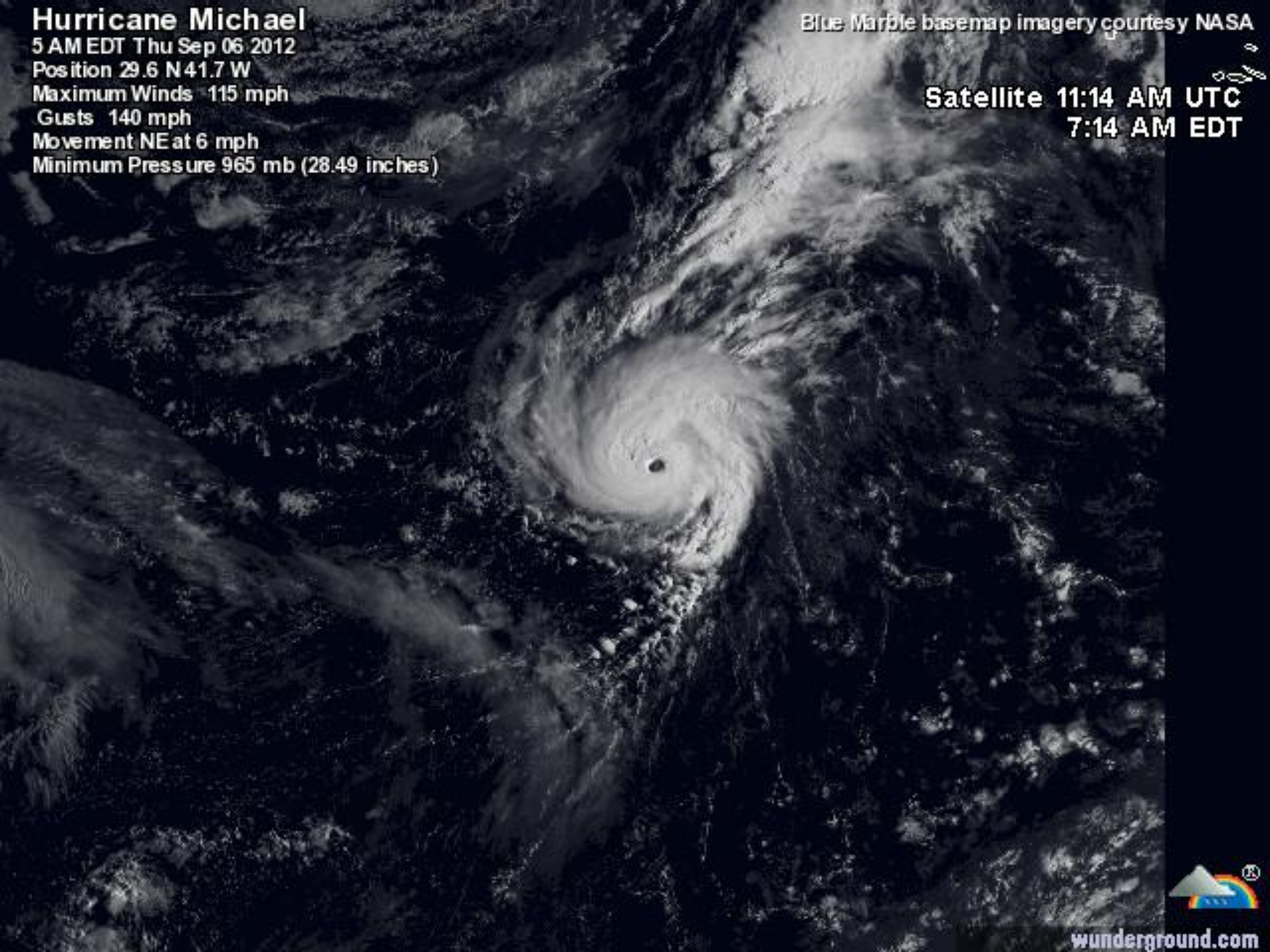
Gusts 140 mph

Movement NE at 6 mph

Minimum Pressure 965 mb (28.49 inches)

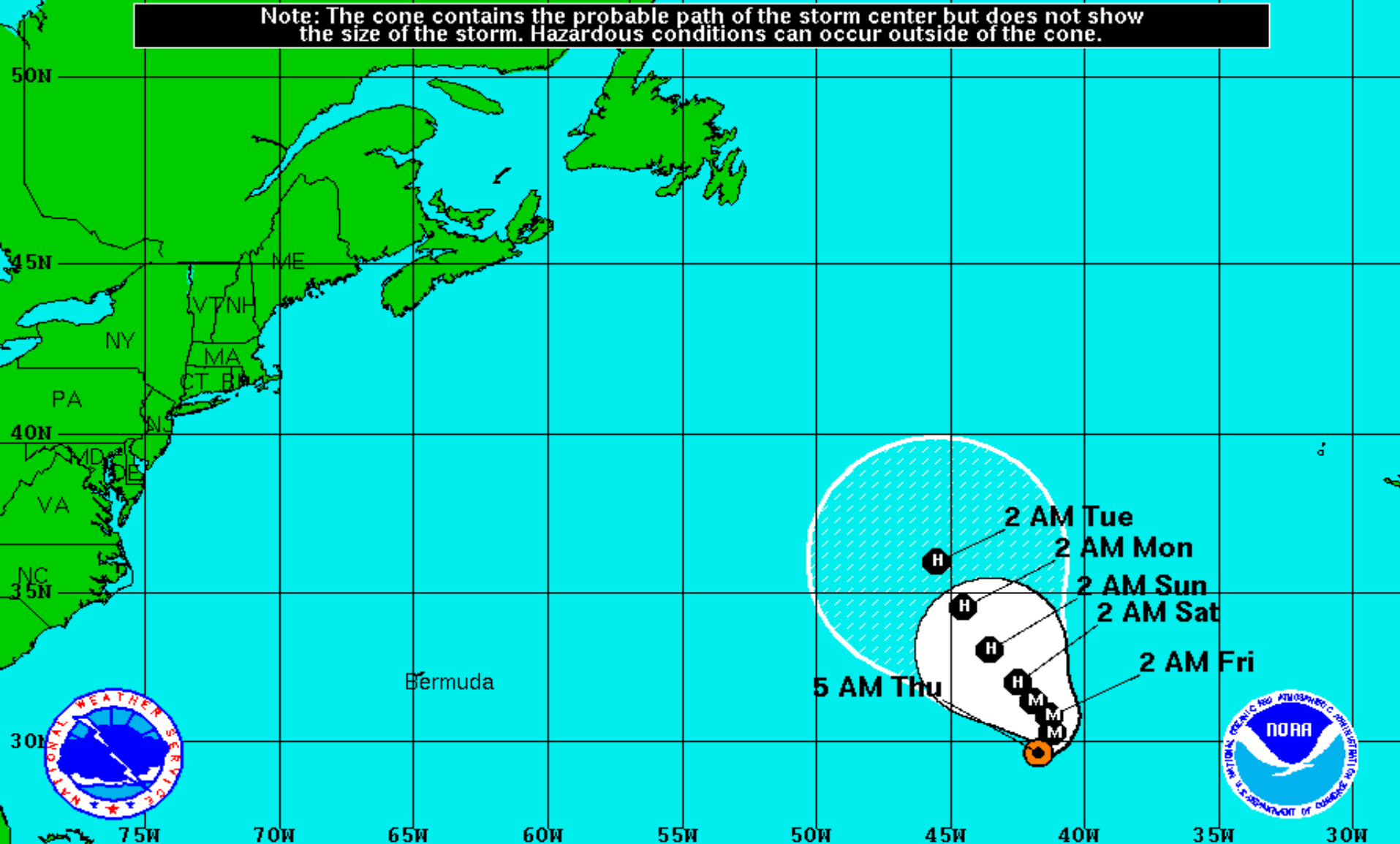
Blue Marble basemap imagery courtesy NASA

Satellite 11:14 AM UTC
7:14 AM EDT






wunderground.com

Note: The cone contains the probable path of the storm center but does not show the size of the storm. Hazardous conditions can occur outside of the cone.



Hurricane Michael
 Thursday September 6, 2012
 5 AM EDT Advisory 13
 NWS National Hurricane Center

Current Information: 
 Center Location 29.6 N 41.7 W
 Max Sustained Wind 115 mph
 Movement NE at 7 mph

Forecast Positions:
 Tropical Cyclone  Post-Tropical
 Sustained Winds: D < 39 mph
 S 39-73 mph H 74-110 mph M > 110mph

Potential Track Area:
 Day 1-3  Day 4-5

Watches:
 Hurricane  Trop.Storm

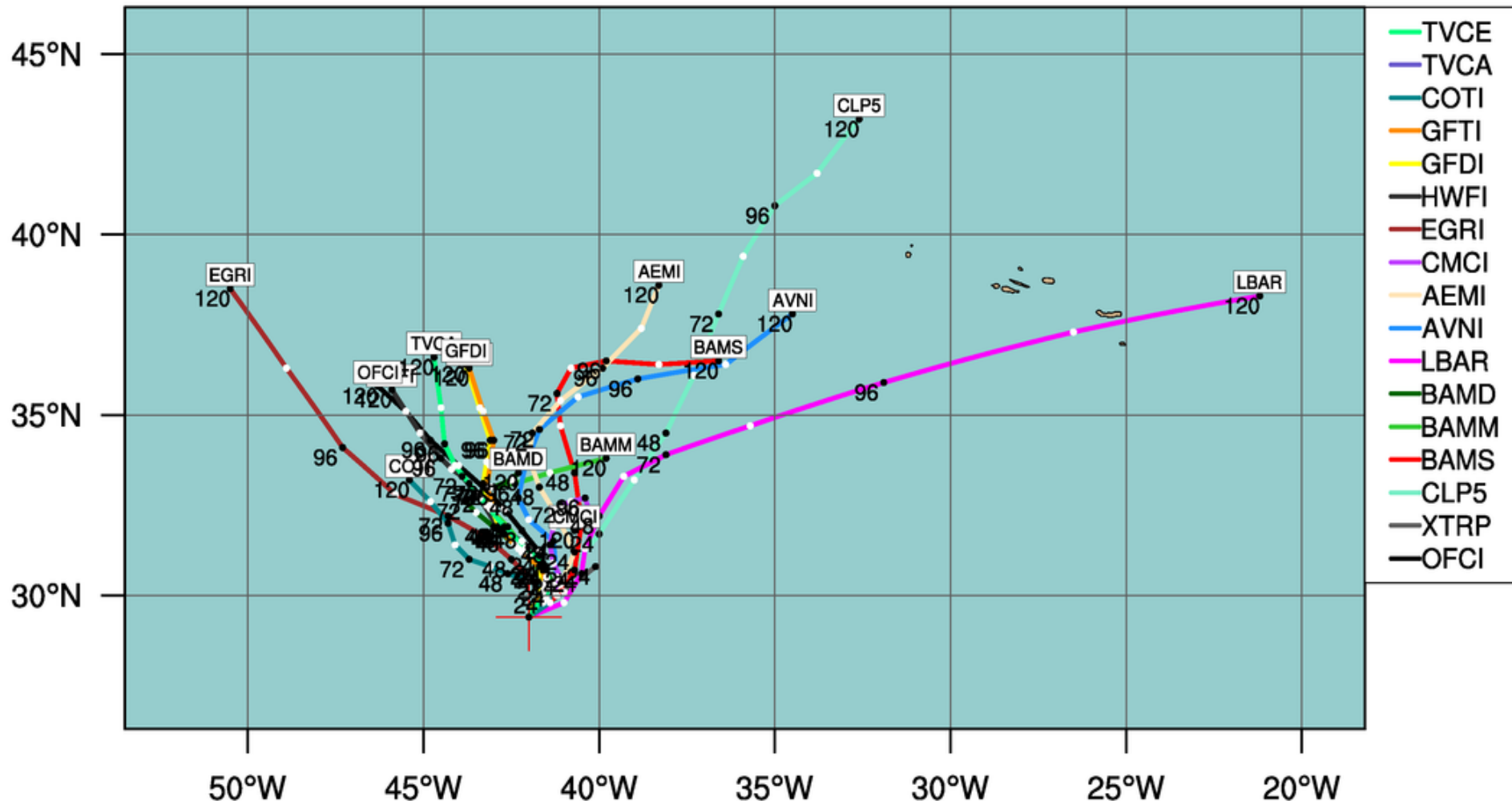
Warnings:
 Hurricane  Trop.Storm

HURRICANE MICHAEL (AL13)

Early-cycle track guidance initialized at 0600 UTC, 06 September 2012

Current Intensity: 95 kt

Current Basin: North Atlantic



By using this plot, the user agrees to the UCAR Terms of Use
which can be accessed at: <http://www2.ucar.edu/terms-of-use>

Plot generated at 0752 UTC 06 September 2012

initialized at 0600 UTC, 06 September 2012





Intensity (Maximum Wind Speed) Probability Table
Hurricane Michael Advisory Number 13
5:00 AM AST Sep 6 2012

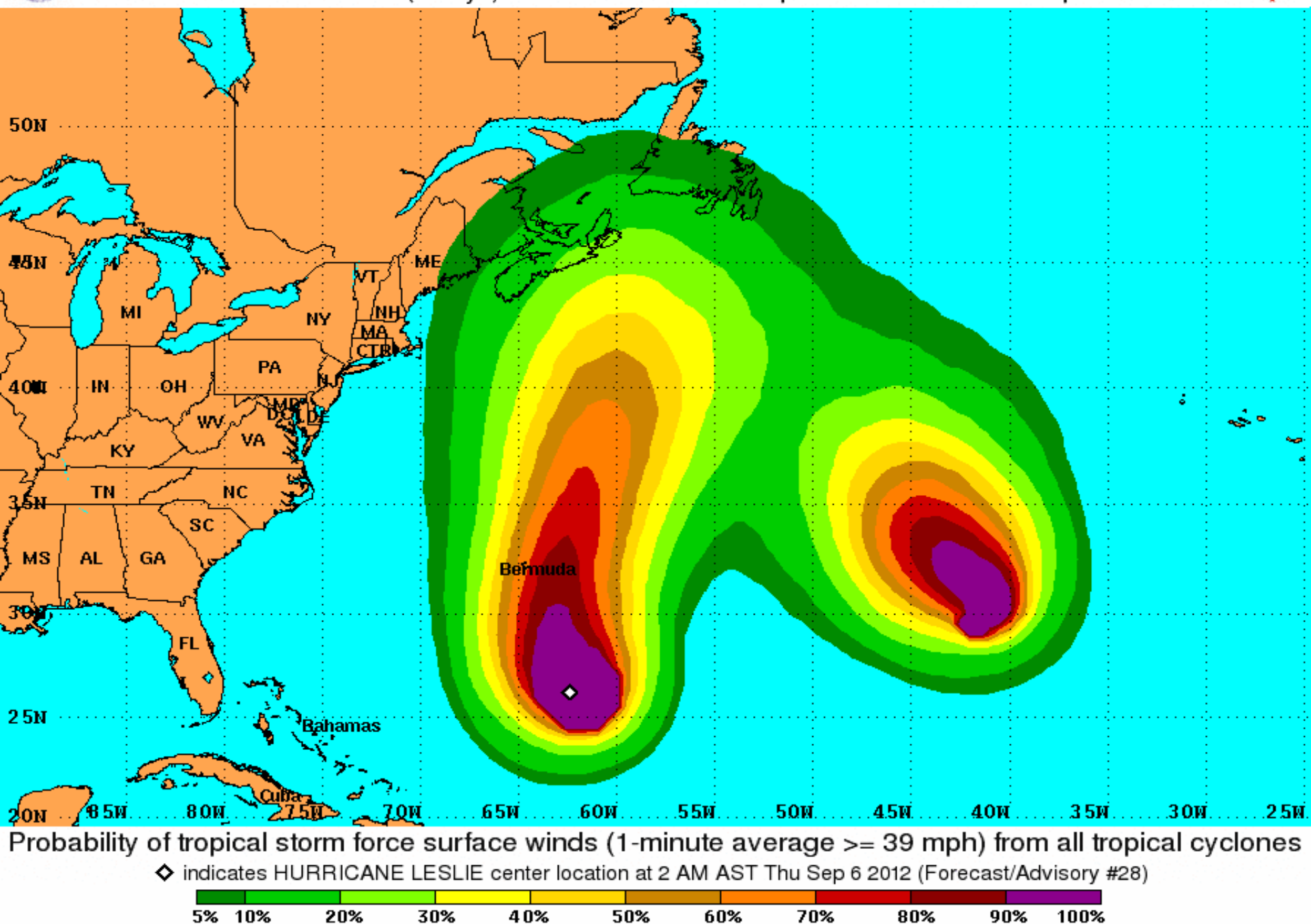


Wind Range (mph)	Forecast Time						
	12 hour for 2 PM Thu	24 hour for 2 AM Fri	36 hour for 2 PM Fri	48 hour for 2 AM Sat	72 hour for 2 AM Sun	96 hour for 2 AM Mon	120 hour for 2 AM Tue
Dissipated	<1%	<1%	<1%	<1%	<1%	2%	5%
Tropical Depression (<39)	<1%	<1%	<1%	1%	2%	5%	19%
Tropical Storm (39-73)	<1%	1%	5%	12%	26%	42%	55%
Hurricane (all categories)	99%	99%	95%	87%	72%	51%	21%
-- Category 1 (74-95)	3%	10%	23%	37%	40%	35%	18%
-- Category 2 (96-110)	21%	32%	37%	28%	20%	11%	2%
-- Category 3 (111-130)	69%	47%	29%	18%	11%	4%	1%
-- Category 4 (131-155)	7%	9%	6%	4%	2%	1%	<1%
-- Category 5 (>155)	1%	1%	1%	<1%	<1%	<1%	<1%
Forecast Maximum Wind	120 mph	120 mph	115 mph	110 mph	105 mph	90 mph	75 mph

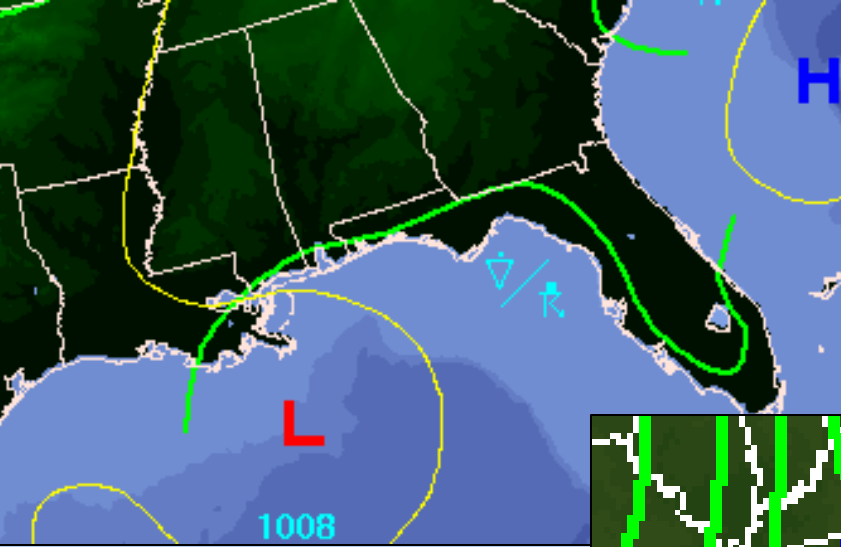


Tropical Storm Force Wind Speed Probabilities

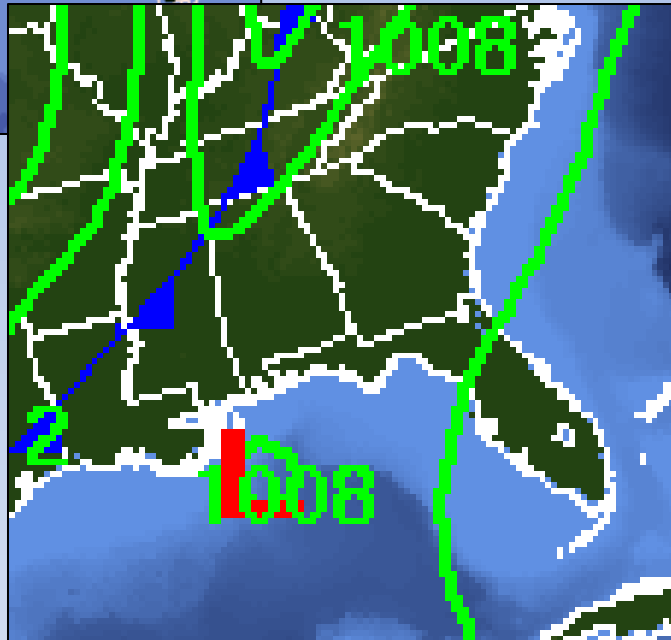
For the 120 hours (5 days) from 2 AM AST Thu Sep 6 to 2 AM AST Tue Sep 11



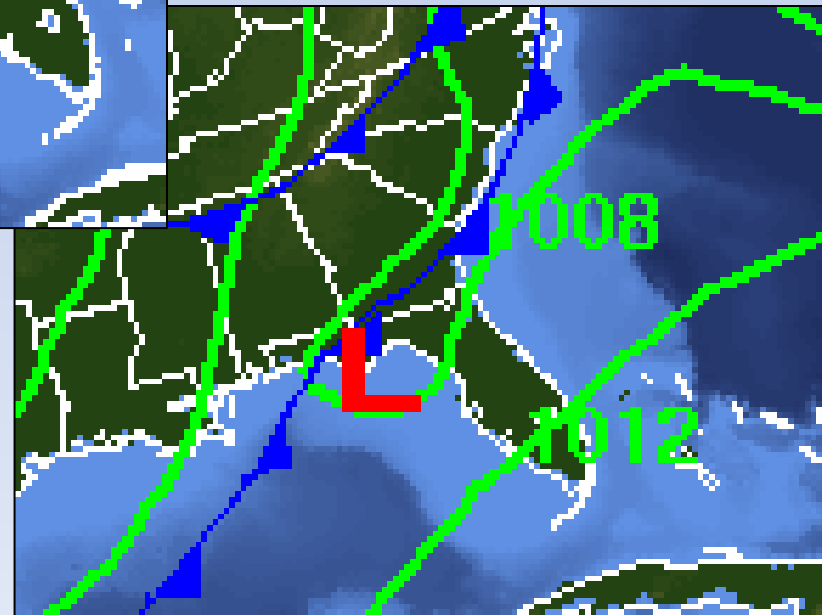
Forecast Weather Maps



Friday



Saturday



Sunday

Rainfall Forecast through the Weekend

