

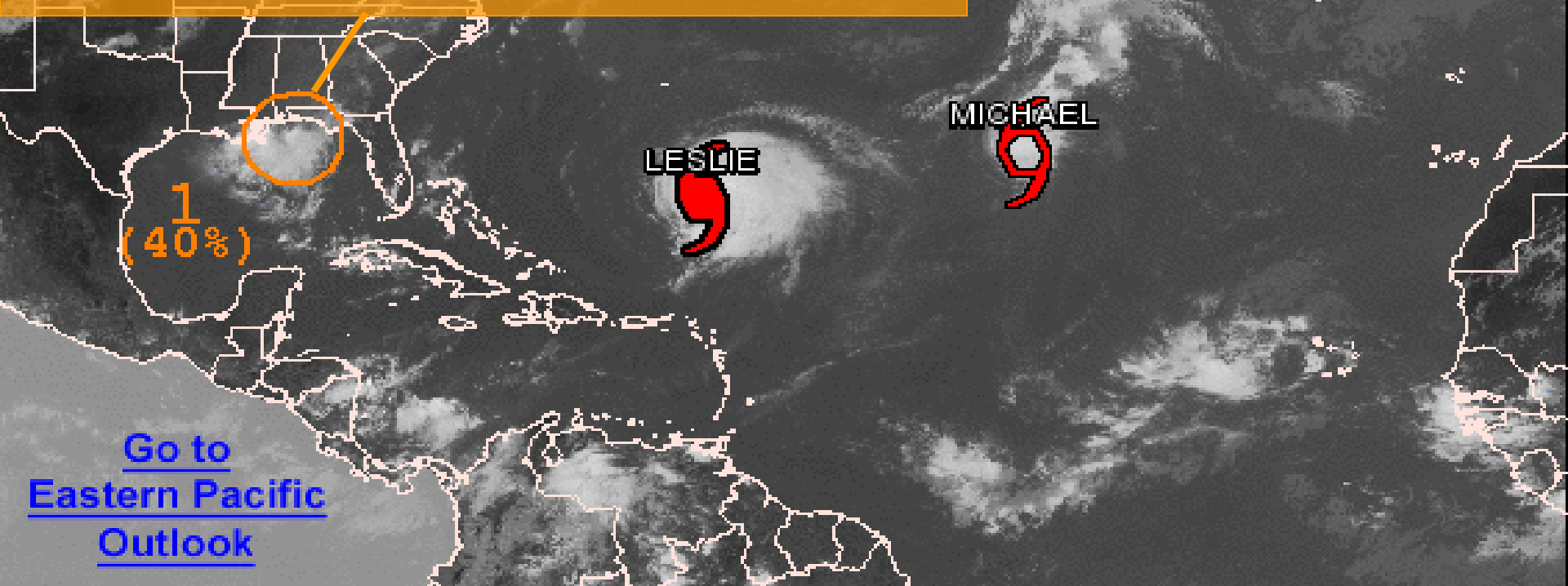


Graphical Tropical Weather Outlook

National Hurricane Center Miami, Florida



1. A LOW PRESSURE SYSTEM IS LOCATED OVER THE EXTREME NORTH-CENTRAL GULF OF MEXICO...ABOUT 25 MILES SOUTHEAST OF PENSACOLA FLORIDA. SHOWERS AND THUNDERSTORMS HAVE CONTINUED TO DEVELOP NEAR AND TO THE SOUTH OF THE CENTER...AND ENVIRONMENTAL CONDITIONS ARE EXPECTED TO BE AT LEAST marginally CONDUCTIVE FOR SOME GRADUAL DEVELOPMENT OF THIS DISTURBANCE OVER THE NEXT FEW DAYS. THIS SYSTEM HAS A MEDIUM CHANCE...40 PERCENT...OF BECOMING A TROPICAL CYCLONE DURING THE NEXT 48 HOURS AS IT MOVES SOUTHWARD TO SOUTH-SOUTHWESTWARD AT 5 TO 10 MPH. AN AIR FORCE RESERVE RECONNAISSANCE AIRCRAFT IS SCHEDULED TO INVESTIGATE THE SYSTEM THURSDAY AFTERNOON...IF NECESSARY



200 PM EDT WED SEP 5 2012

Satellite Image: 0122 PM EDT

Outlined areas denote current position of systems discussed in the Tropical Weather Outlook. Color indicates probability of tropical cyclone formation within 48 hours.

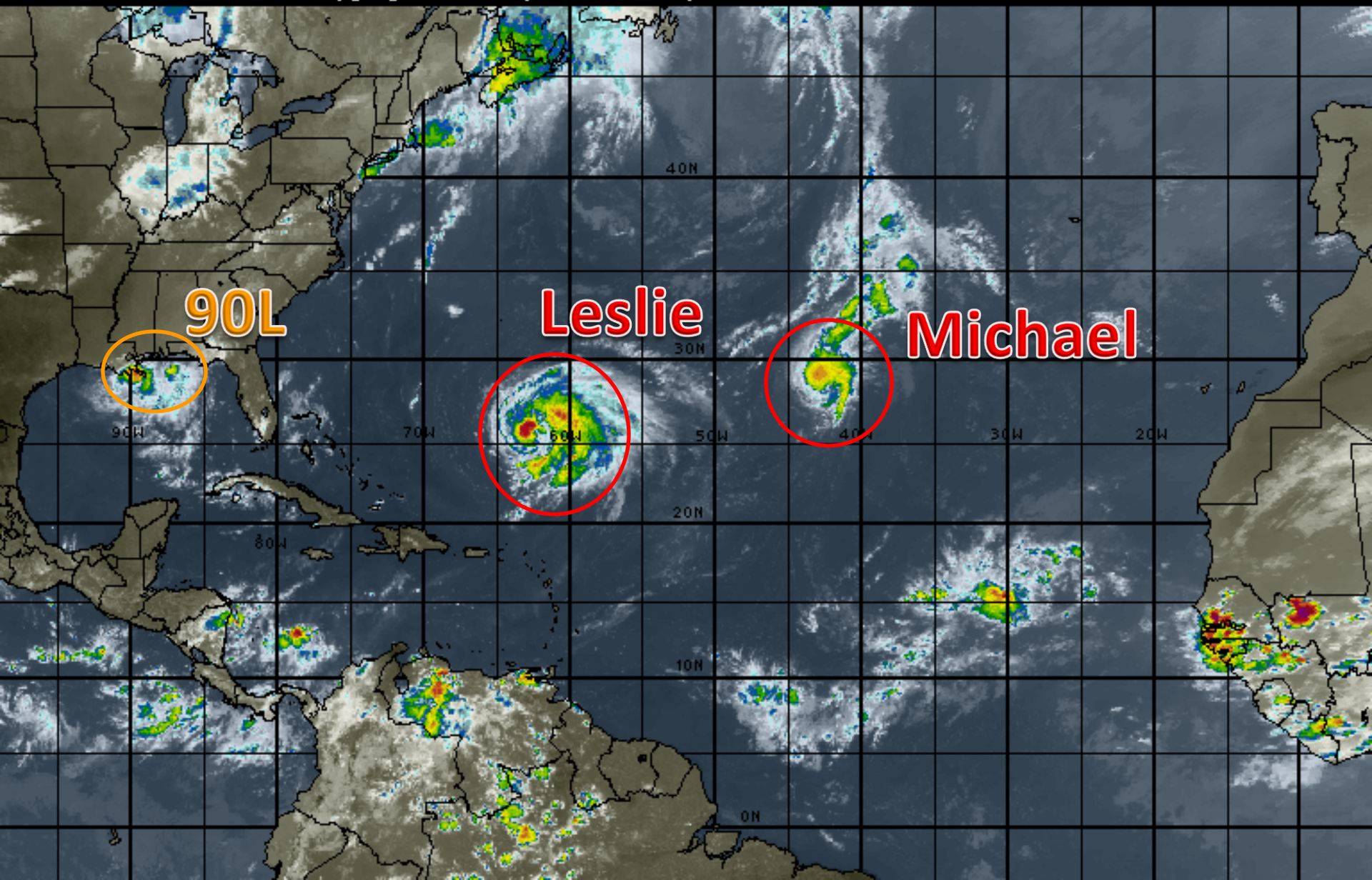
 Low <30%

 Medium 30-50%

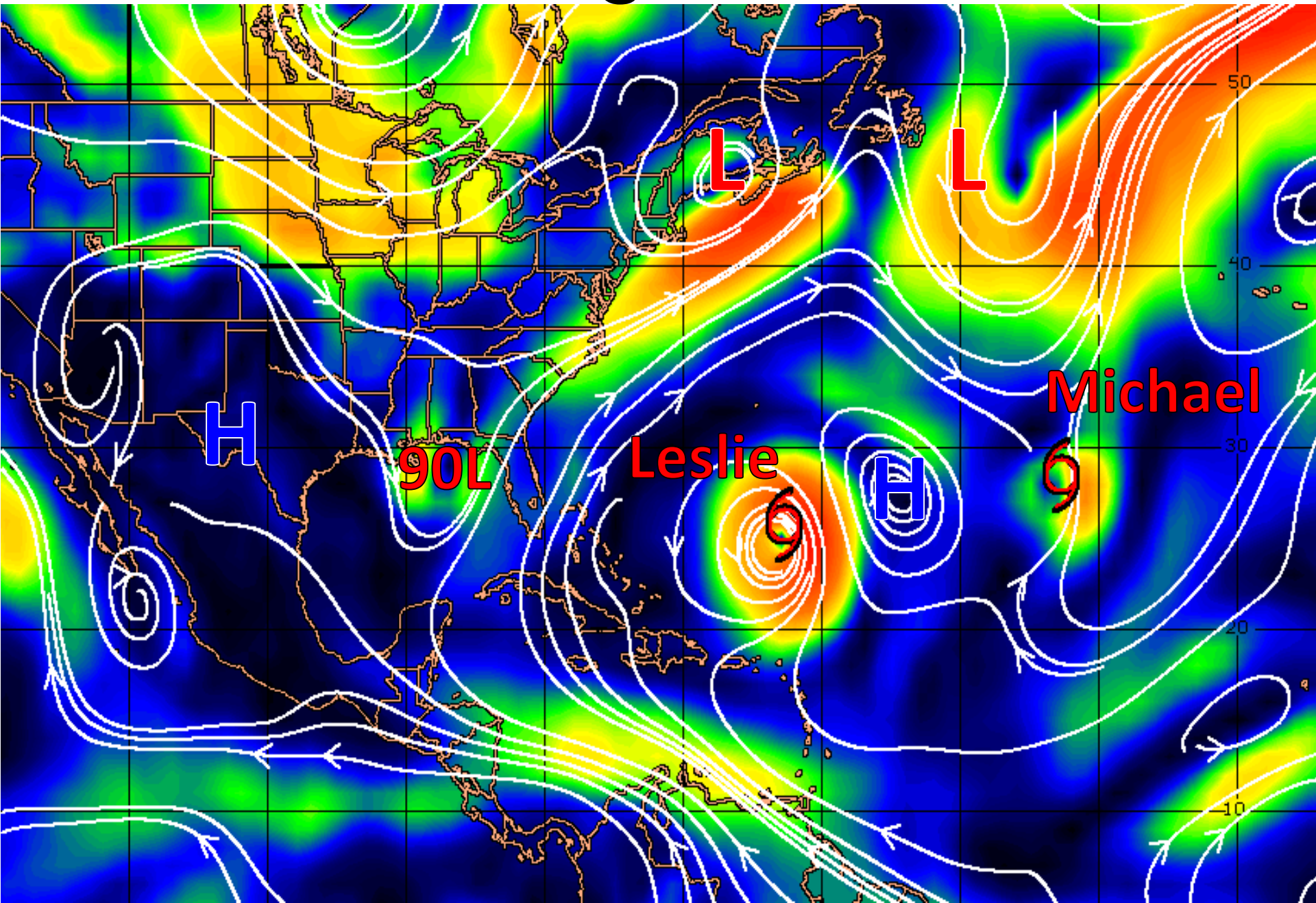
 High >50%

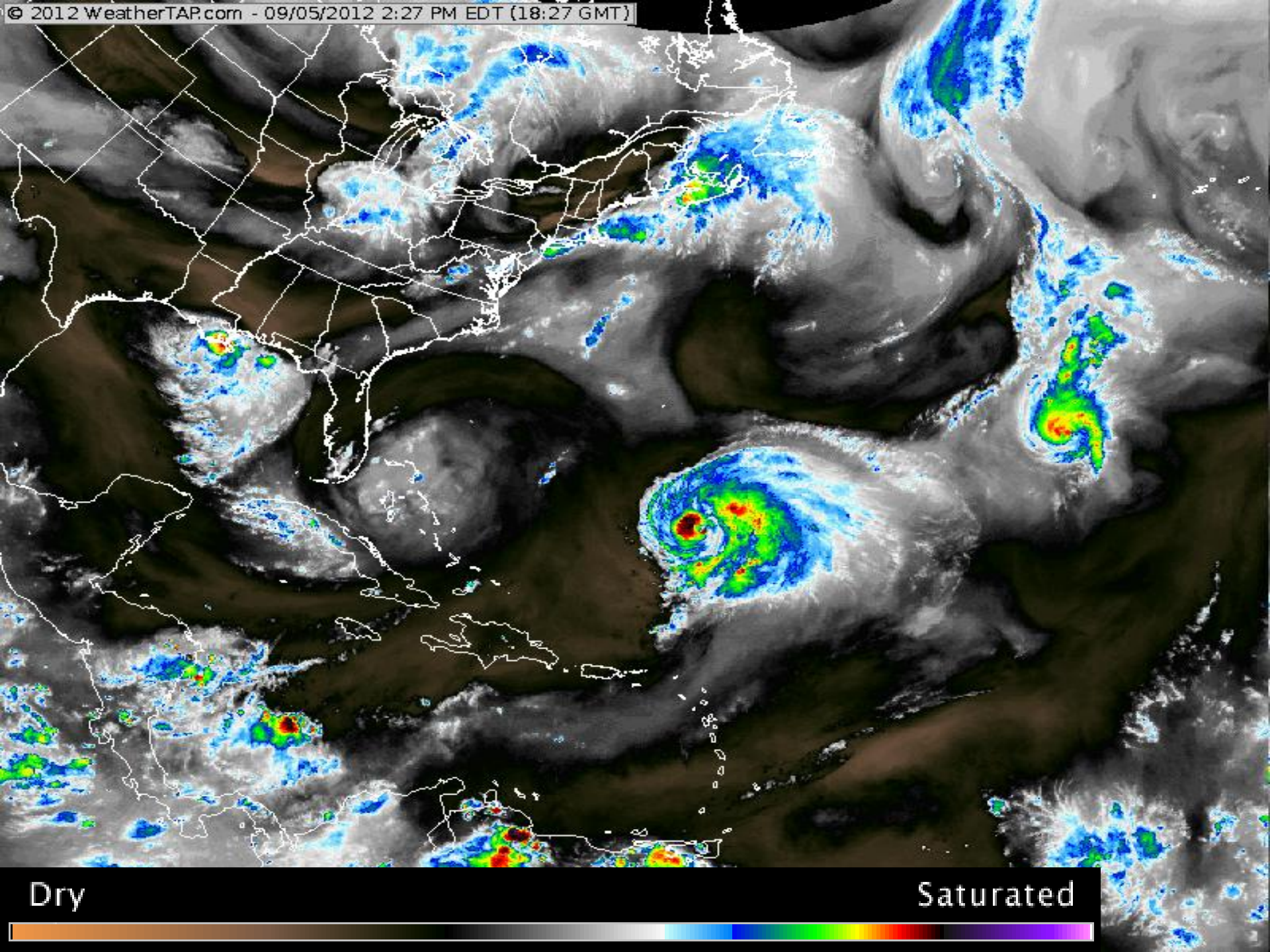
Atlantic Basin Satellite Image

18:00 05-SEP-2012 GMT ©Copyright WSI Corporation <http://www.wsi.com>



Steering Currents



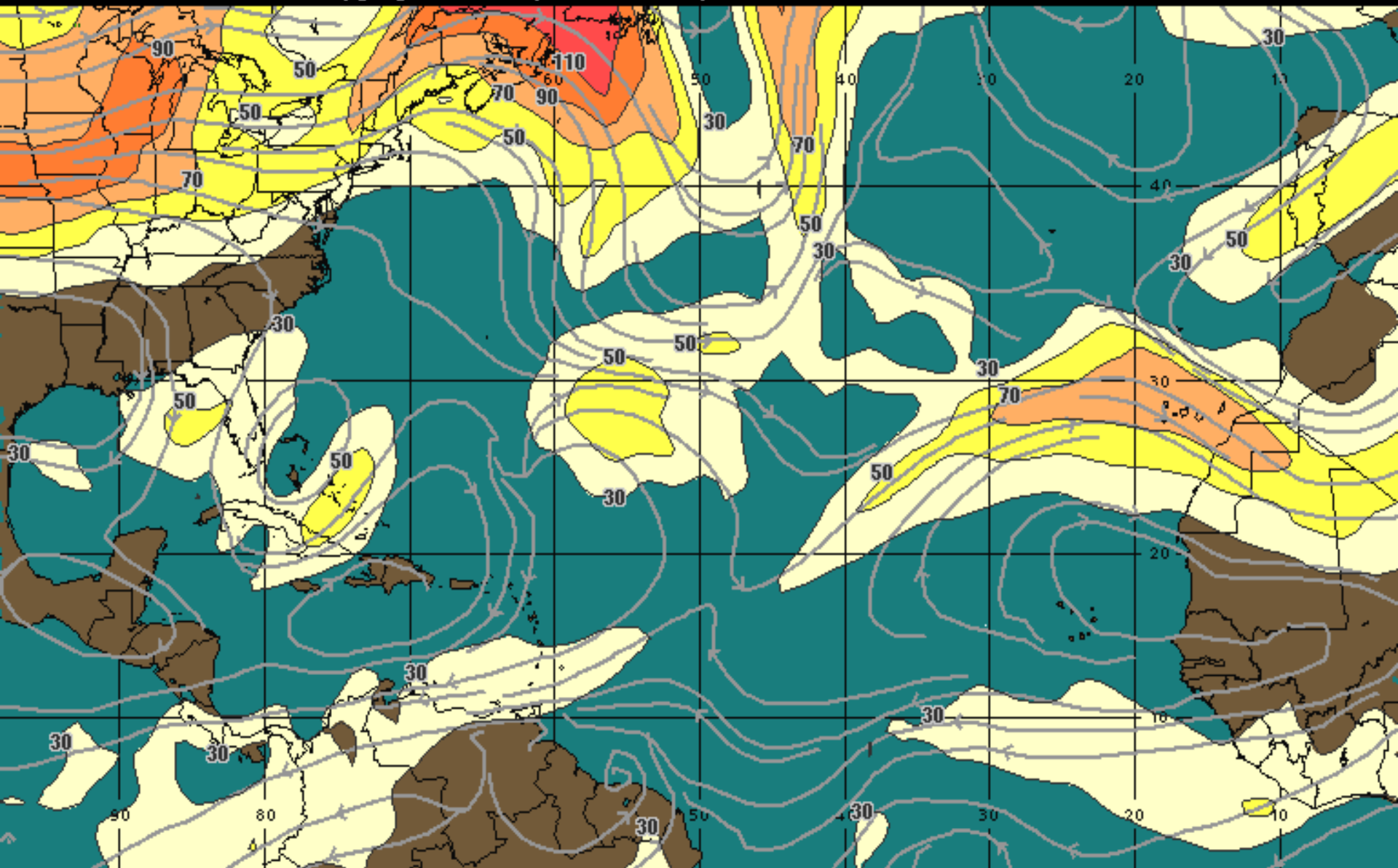


Dry

Saturated

Current Wind Shear

12:00 05-SEP-2012 GMT ©Copyright WSI Corporation <http://www.wsi.com>

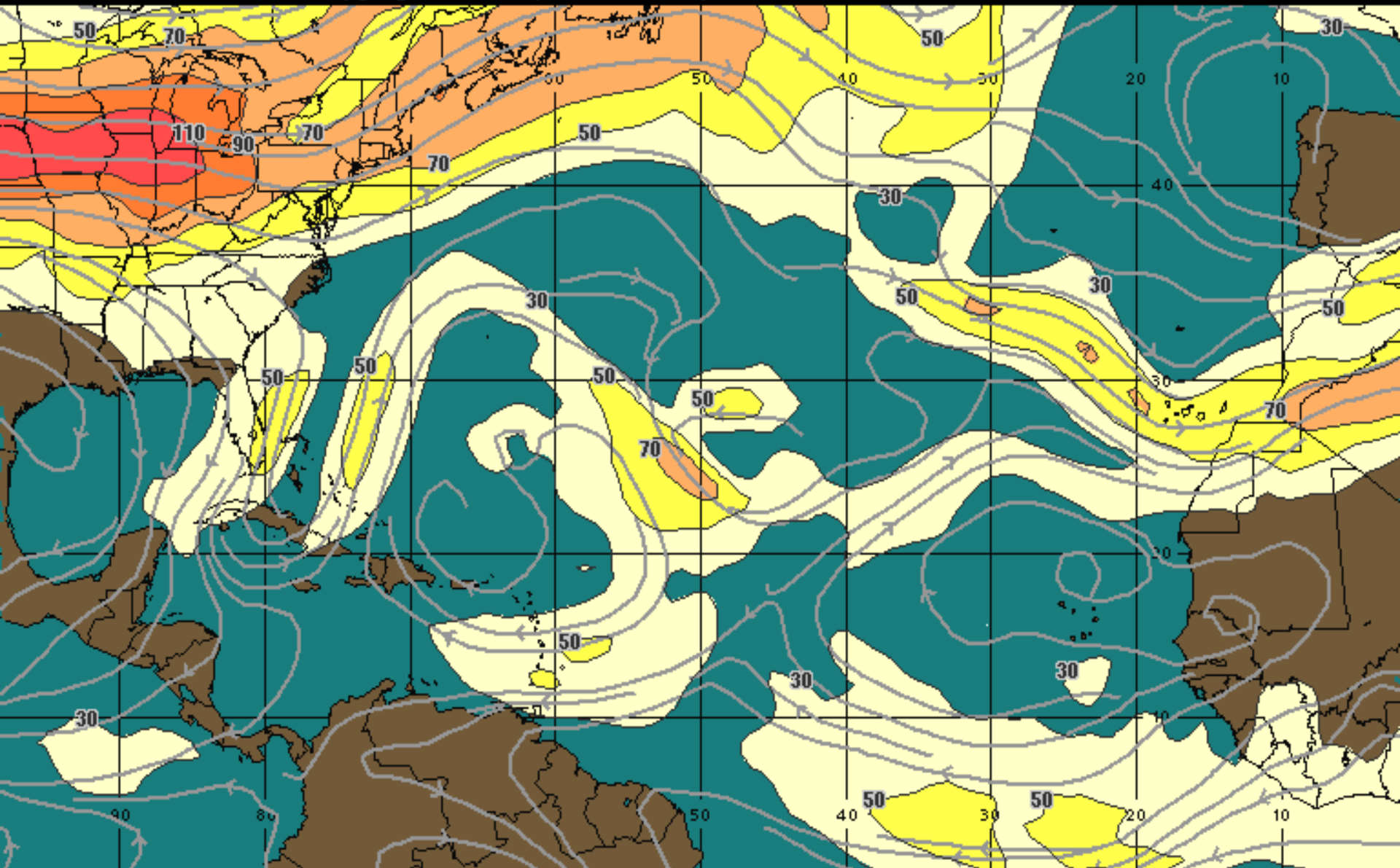


200Mb Wind Speed / Streamline Analysis
Valid 1200 UTC Wed 05-Sep-12

30 mph 50 70 90 110 130 150 +

36 Hour Forecast Wind Shear

12:00 07-SEP-2012 GMT ©Copyright WSI Corporation <http://www.wsi.com>

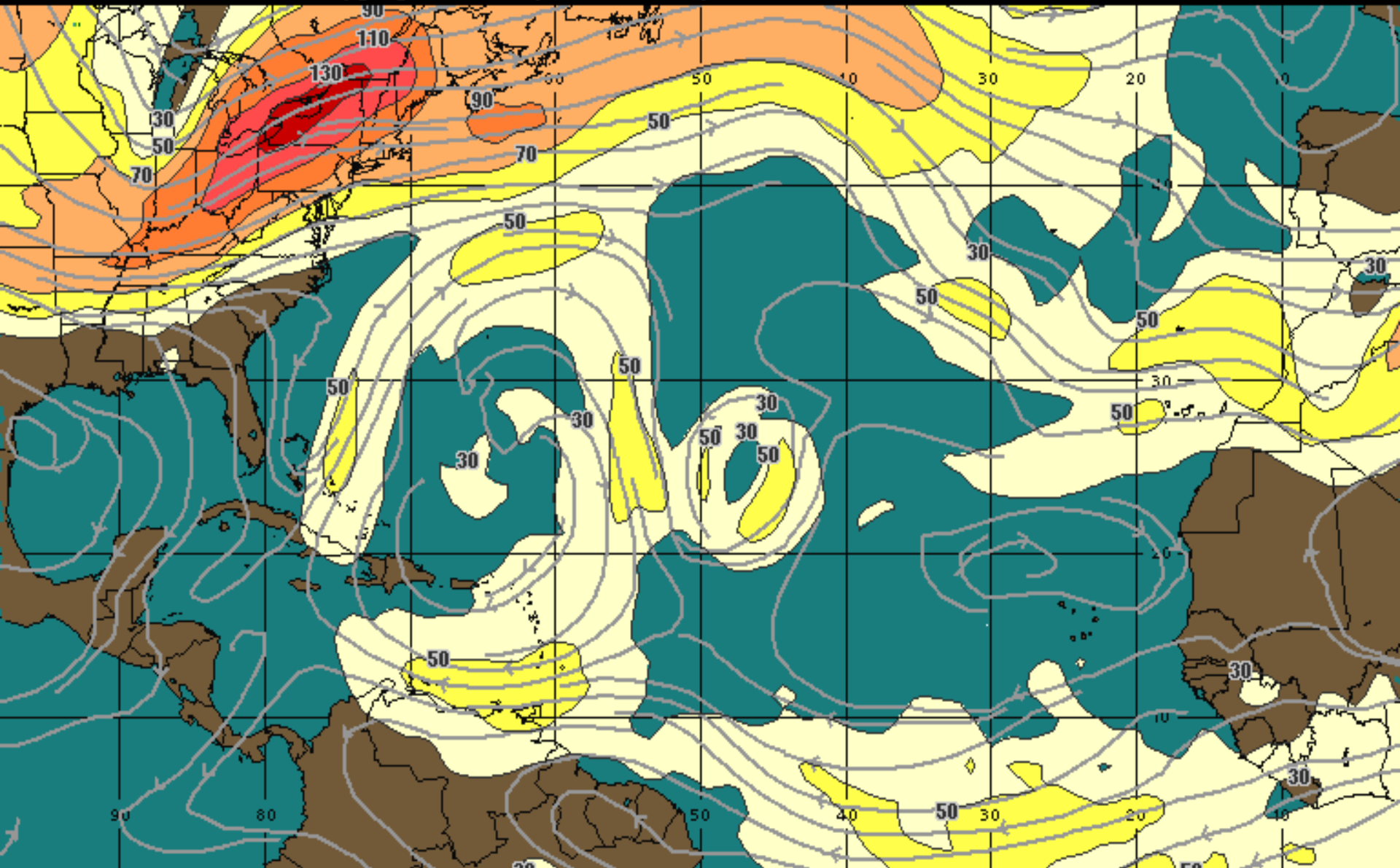


200Mb Wind Speed / Streamline Forecast
Valid 1200 UTC Fri 07-Sep-12

30 mph 50 70 90 110 130 150 +

60 Hour Forecast Wind Shear

12:00 08-SEP-2012 GMT ©Copyright WSI Corporation <http://www.wsi.com>



200Mb Wind Speed / Streamline Forecast
Valid 1200 UTC Sat 08-Sep-12

30 mph 50 70 90 110 130 150 +

Invest 90L

2 PM Wed Sep 5 2012

Position 30.0 87.0 W

Maximum Winds 30 mph

Movement SSW at 10 mph

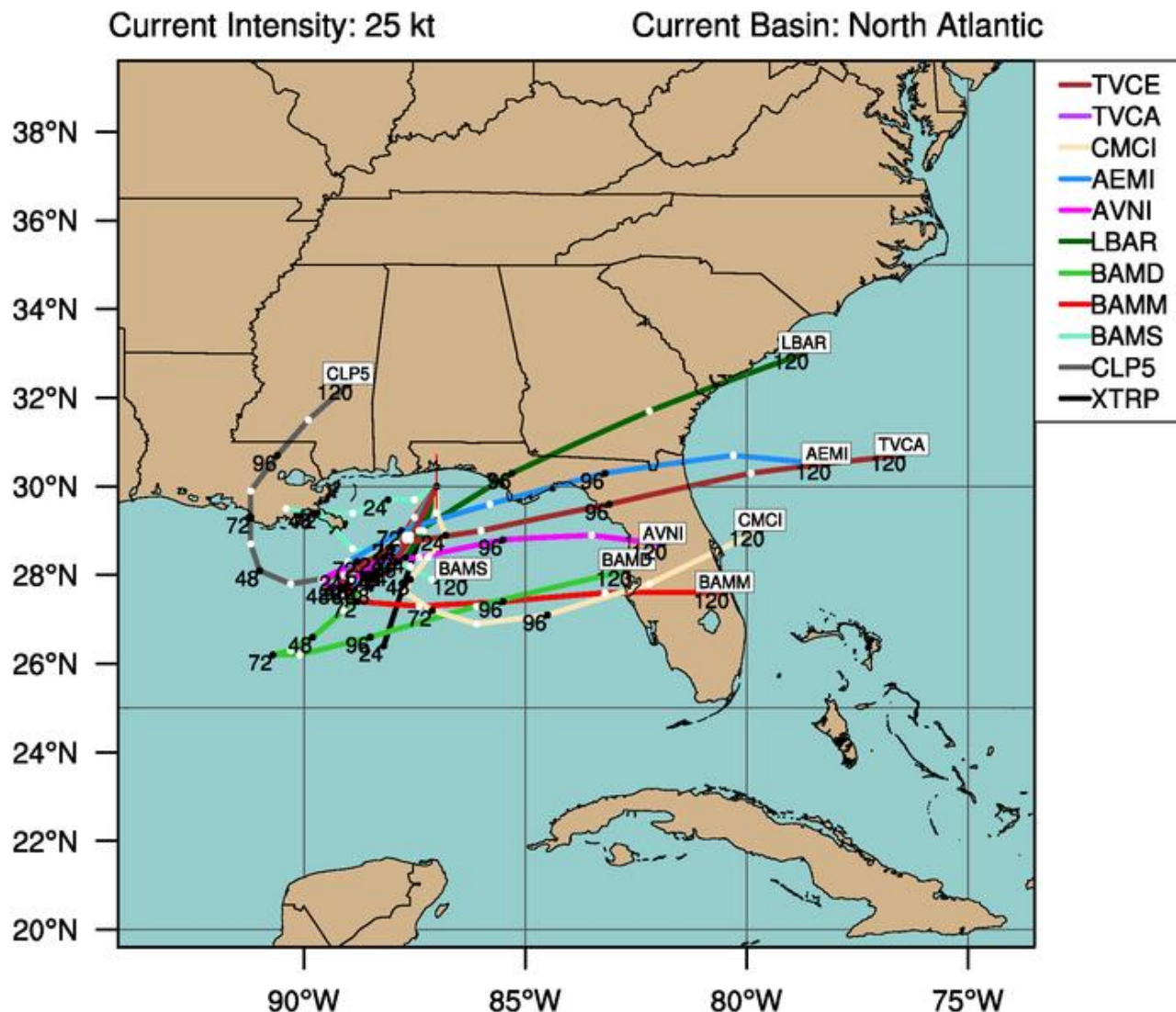
Blue Marble basemap imagery courtesy NASA

Satellite 6:45 PM UTC



LOW INVEST (AL90)

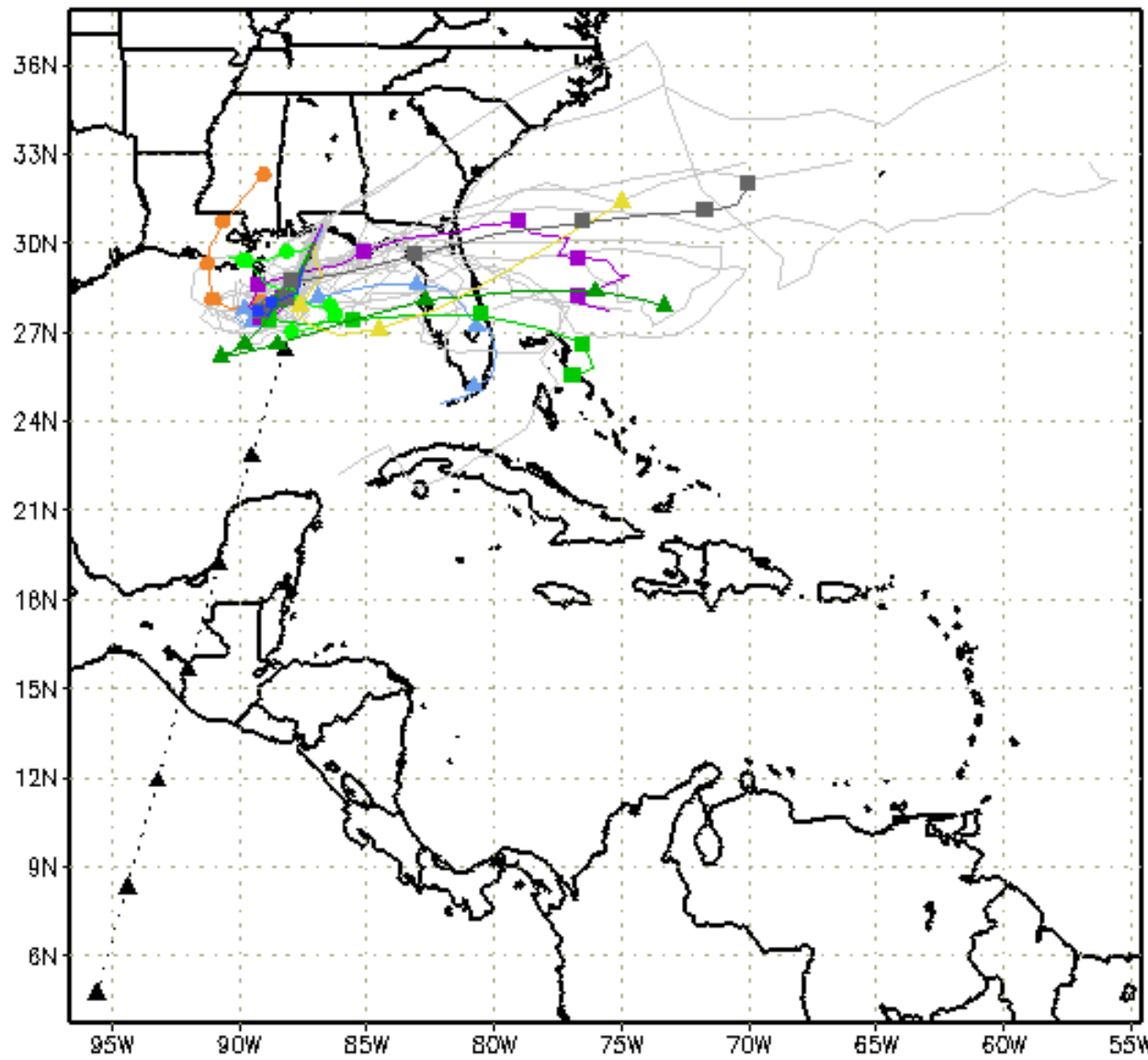
Early-cycle track guidance initialized at 1800 UTC, 05 September 2012



By using this plot, the user agrees to the UCAR Terms of Use
which can be accessed at: <http://www2.ucar.edu/terms-of-use>

Plot generated at 1922 UTC 05 September 2012

---▲--- XTRP 05/1800Z	▲ BAMD 05/1800Z	▲ GFDL Not Avail	▲ AVNO 05/1200Z	▲ CMC 05/1800Z
■ TVCN 05/1800Z	■ BAMB 05/1800Z	■ UKM 05/1200Z	■ AEMN 05/1200Z	■ APxx 05/1200Z
● NHC Not Avail	● BAMS 05/1800Z	● NGPS Not Avail	● HWRF Not Avail	● GLP5 05/1800Z



storm_90
sfwmd.gov
 weather@sfwmd.gov
 05-Sep 15:51EDT

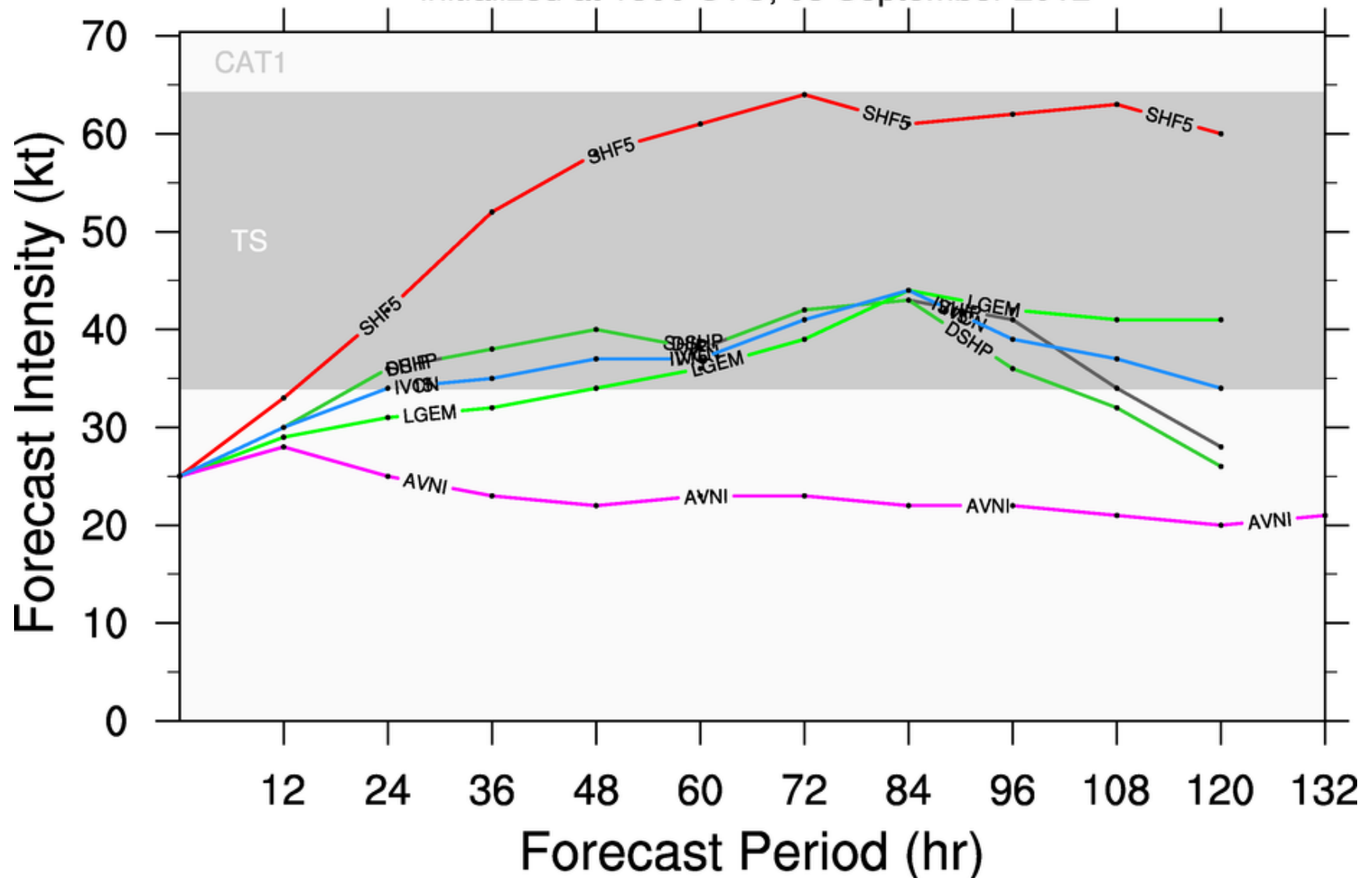
NHC Advisories and County Emergency Management Statements supersede this product.
 This graphic should complement, not replace, NHC discussions.
 If anything on this graphic causes confusion, ignore the entire product.
 For full info, see <http://my.sfwmd.gov/sfwmd/common/images/weather/plots.html>



LOW INVEST (AL90)

Early-cycle intensity guidance

initialized at 1800 UTC, 05 September 2012



By using this plot, the user agrees to the UCAR Terms of Use
which can be accessed at: <http://www2.ucar.edu/terms-of-use>

Plot generated at 1952 UTC 05 September 2012

Hurricane Leslie

7:PM Wed Dec 31 2069

Position 25.8 N 62.5 W

Maximum Winds 75 mph

Gusts 85 mph

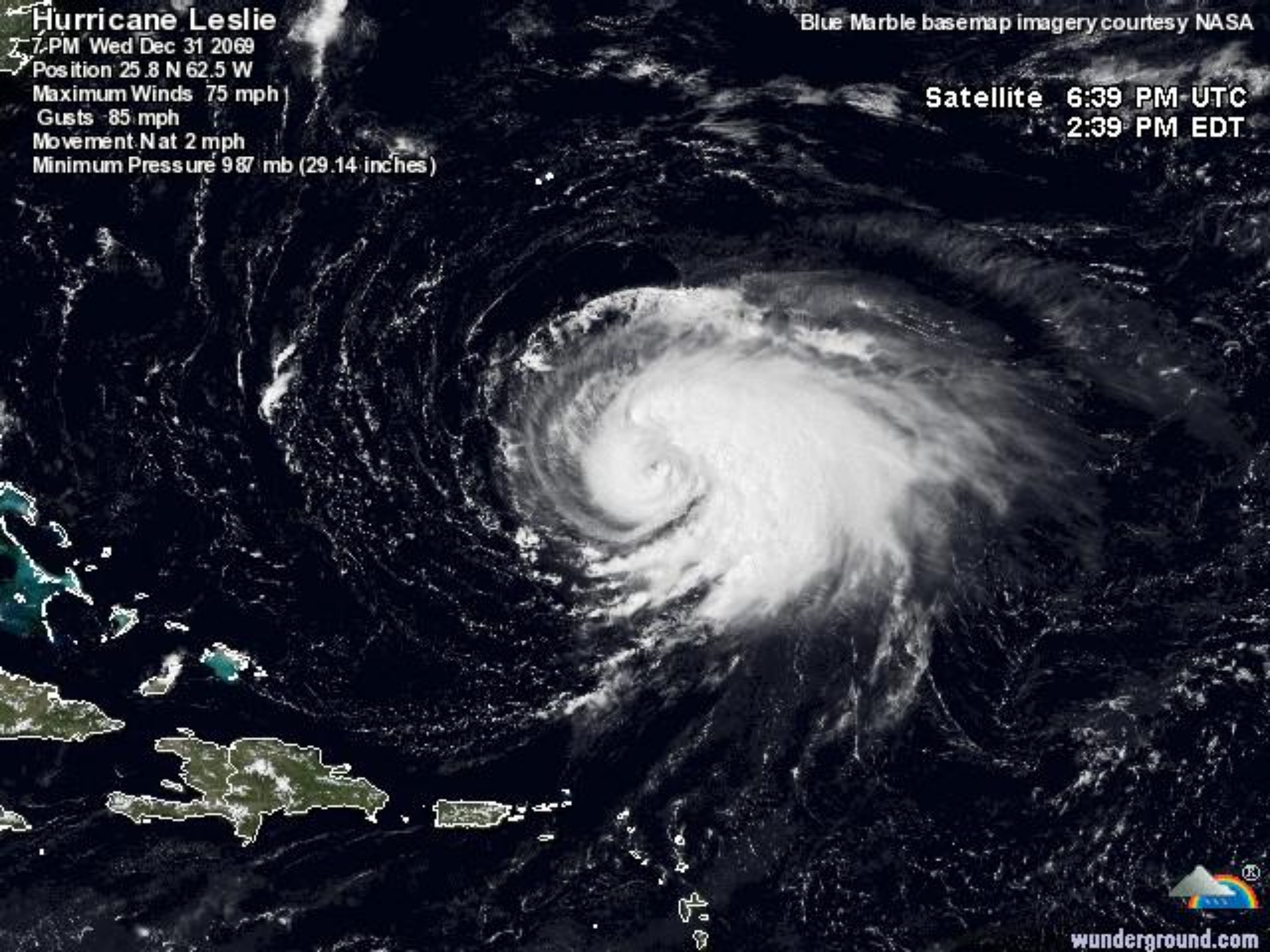
Movement Nat 2 mph

Minimum Pressure 987 mb (29.14 inches)

Blue Marble basemap imagery courtesy NASA

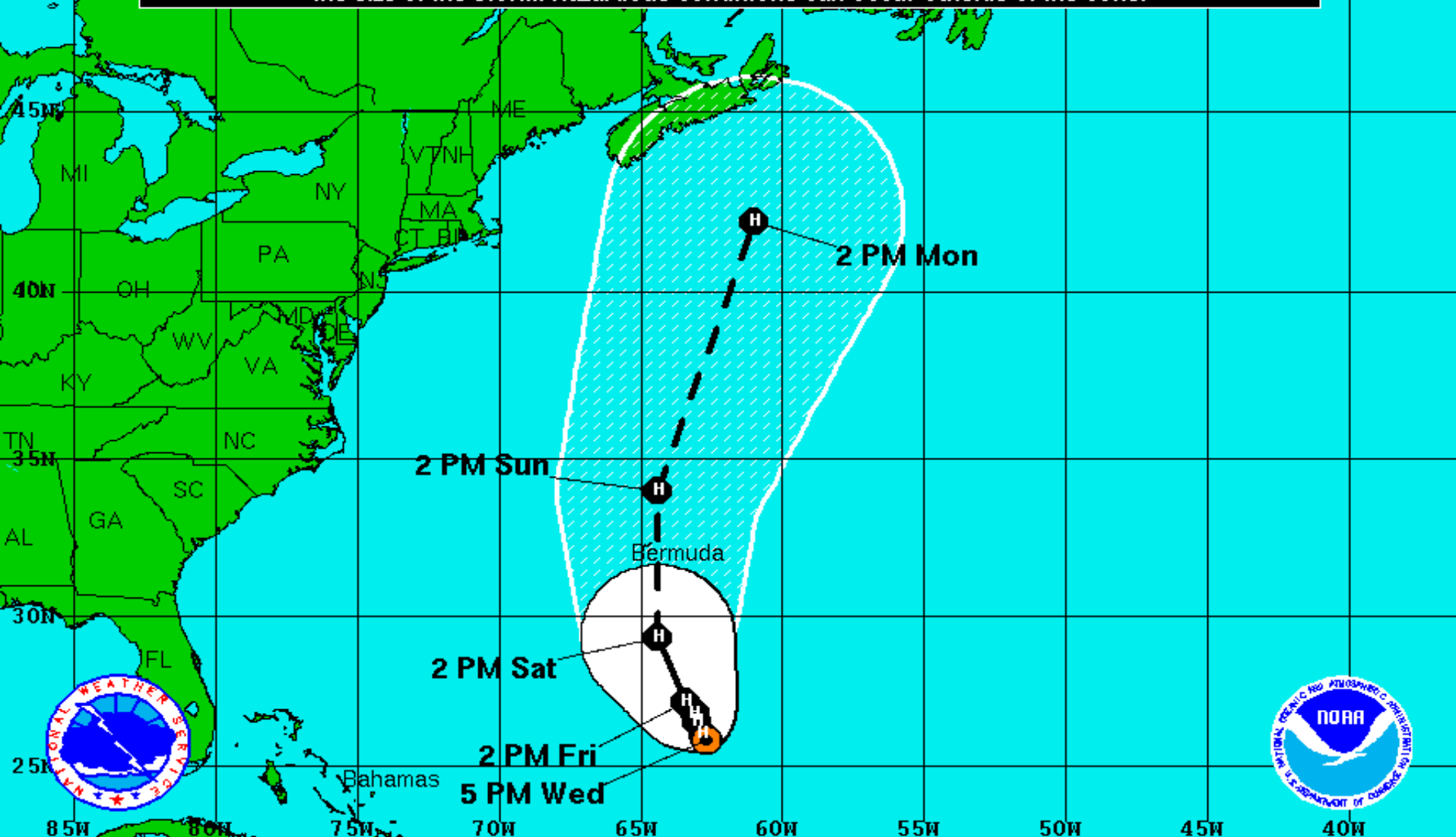
Satellite 6:39 PM UTC

2:39 PM EDT



wunderground.com

Note: The cone contains the probable path of the storm center but does not show the size of the storm. Hazardous conditions can occur outside of the cone.



Hurricane Leslie
 Wednesday September 5, 2012
 5 PM EDT Advisory 26
 NWS National Hurricane Center

Current Information:
 Center Location 25.9 N 62.7 W
 Max Sustained Wind 75 mph
 Movement N at 2 mph

Forecast Positions:
 Tropical Cyclone Post-Tropical
 Sustained Winds: D < 39 mph
 S 39-73 mph H 74-110 mph M > 110mph

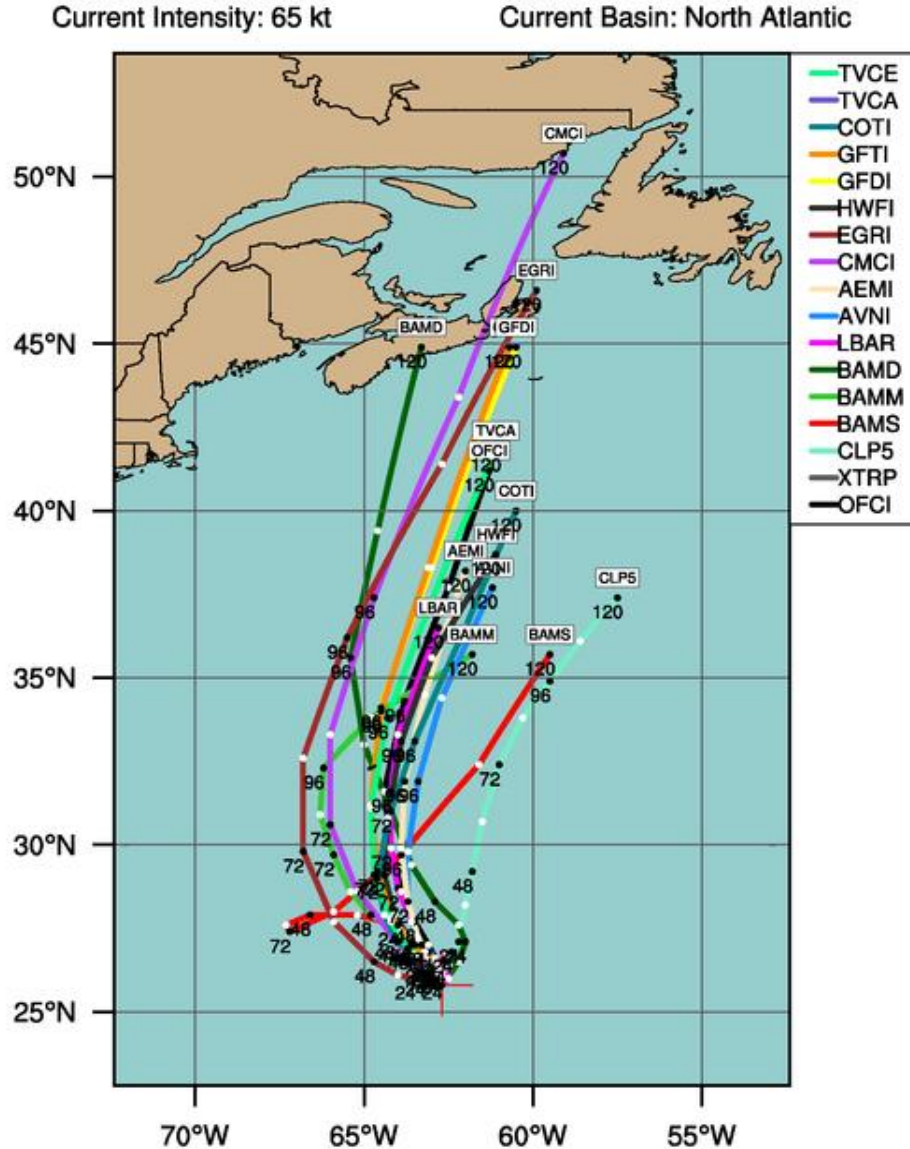
Potential Track Area:
 Day 1-3 Day 4-5

Watches:
 Hurricane Trop.Storm

Warnings:
 Hurricane Trop.Storm

HURRICANE LESLIE (AL12)

Early-cycle track guidance initialized at 1800 UTC, 05 September 2012



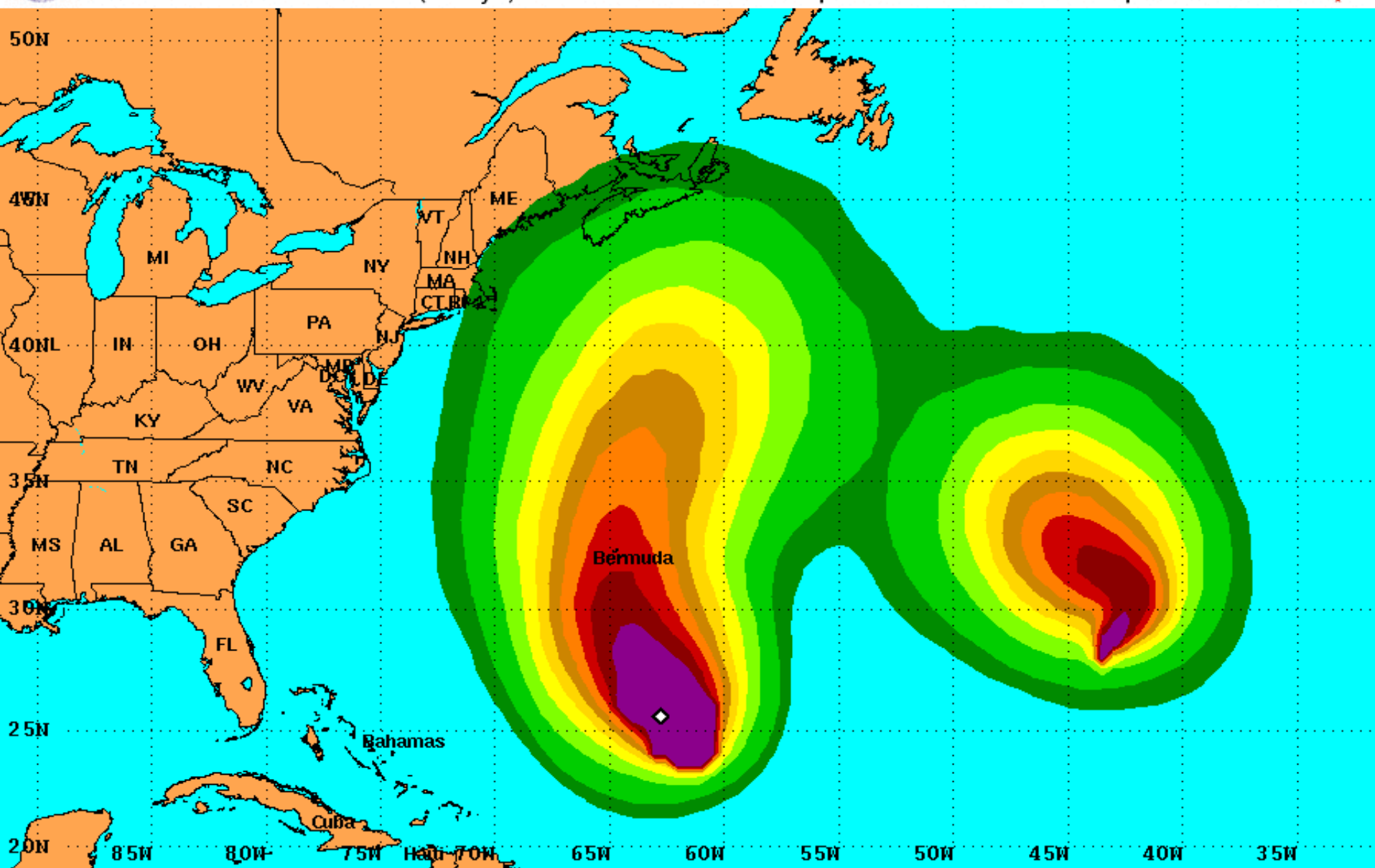
By using this plot, the user agrees to the UCAR Terms of Use
which can be accessed at: <http://www2.ucar.edu/terms-of-use>

Plot generated at 1952 UTC 05 September 2012



Tropical Storm Force Wind Speed Probabilities

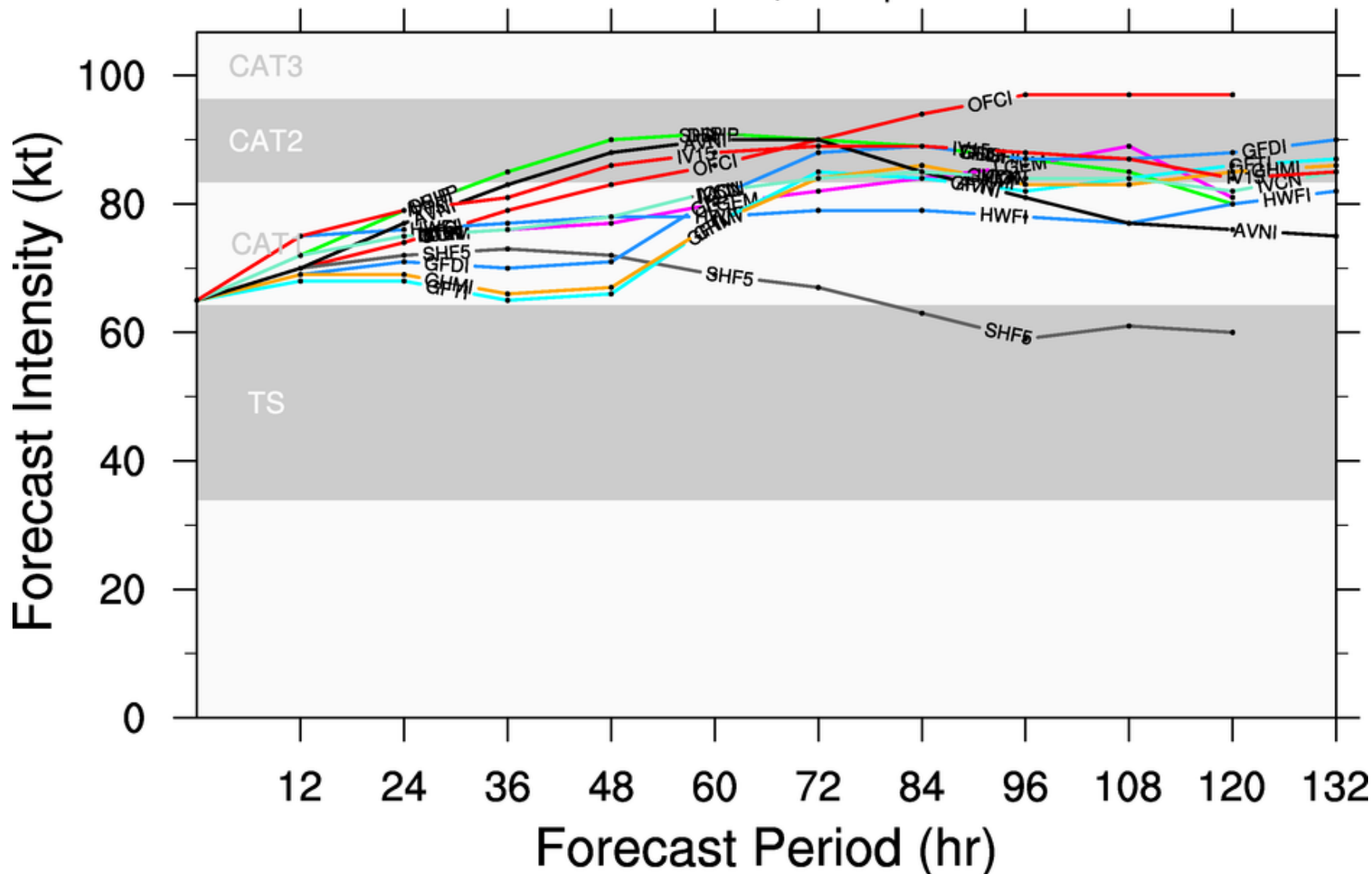
For the 120 hours (5 days) from 8 AM AST Wed Sep 5 to 8 AM AST Mon Sep 10



HURRICANE LESLIE (AL12)

Early-cycle intensity guidance

initialized at 1800 UTC, 05 September 2012



By using this plot, the user agrees to the UCAR Terms of Use
which can be accessed at: <http://www2.ucar.edu/terms-of-use>

Plot generated at 1953 UTC 05 September 2012



Intensity (Maximum Wind Speed) Probability Table
Hurricane Leslie Advisory Number 26
5:00 PM AST Sep 5 2012



Wind Range (mph)	Forecast Time						
	12 hour for 2 AM Thu	24 hour for 2 PM Thu	36 hour for 2 AM Fri	48 hour for 2 PM Fri	72 hour for 2 PM Sat	96 hour for 2 PM Sun	120 hour for 2 PM Mon
Dissipated	<1%	<1%	<1%	<1%	<1%	1%	2%
Tropical Depression (<39)	<1%	1%	1%	1%	2%	1%	6%
Tropical Storm (39-73)	26%	22%	20%	20%	20%	18%	41%
Hurricane (all categories)	74%	77%	80%	80%	78%	80%	52%
-- Category 1 (74-95)	67%	59%	50%	43%	38%	35%	33%
-- Category 2 (96-110)	5%	14%	21%	23%	22%	25%	13%
-- Category 3 (111-130)	1%	4%	7%	12%	14%	16%	5%
-- Category 4 (131-155)	<1%	1%	2%	3%	3%	4%	1%
-- Category 5 (>155)	<1%	<1%	<1%	<1%	<1%	<1%	<1%
Forecast Maximum Wind	80 mph	85 mph	90 mph	100 mph	105 mph	110 mph	100 mph

Tropical Storm Michael

1 PM EDT Wed Sep 05 2012

Position 28.5 N 42.9 W

Maximum Winds 65 mph

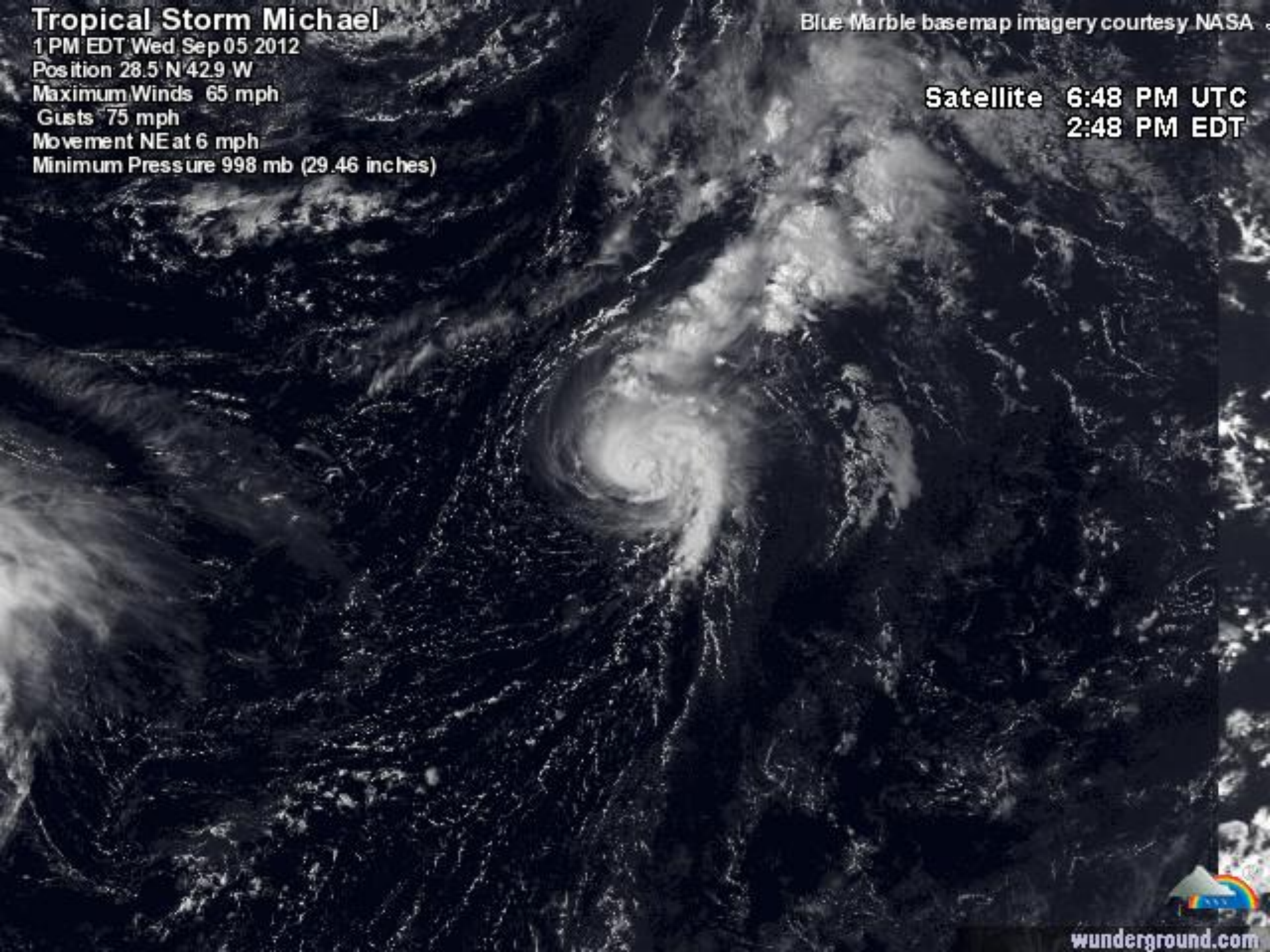
Gusts 75 mph

Movement NE at 6 mph

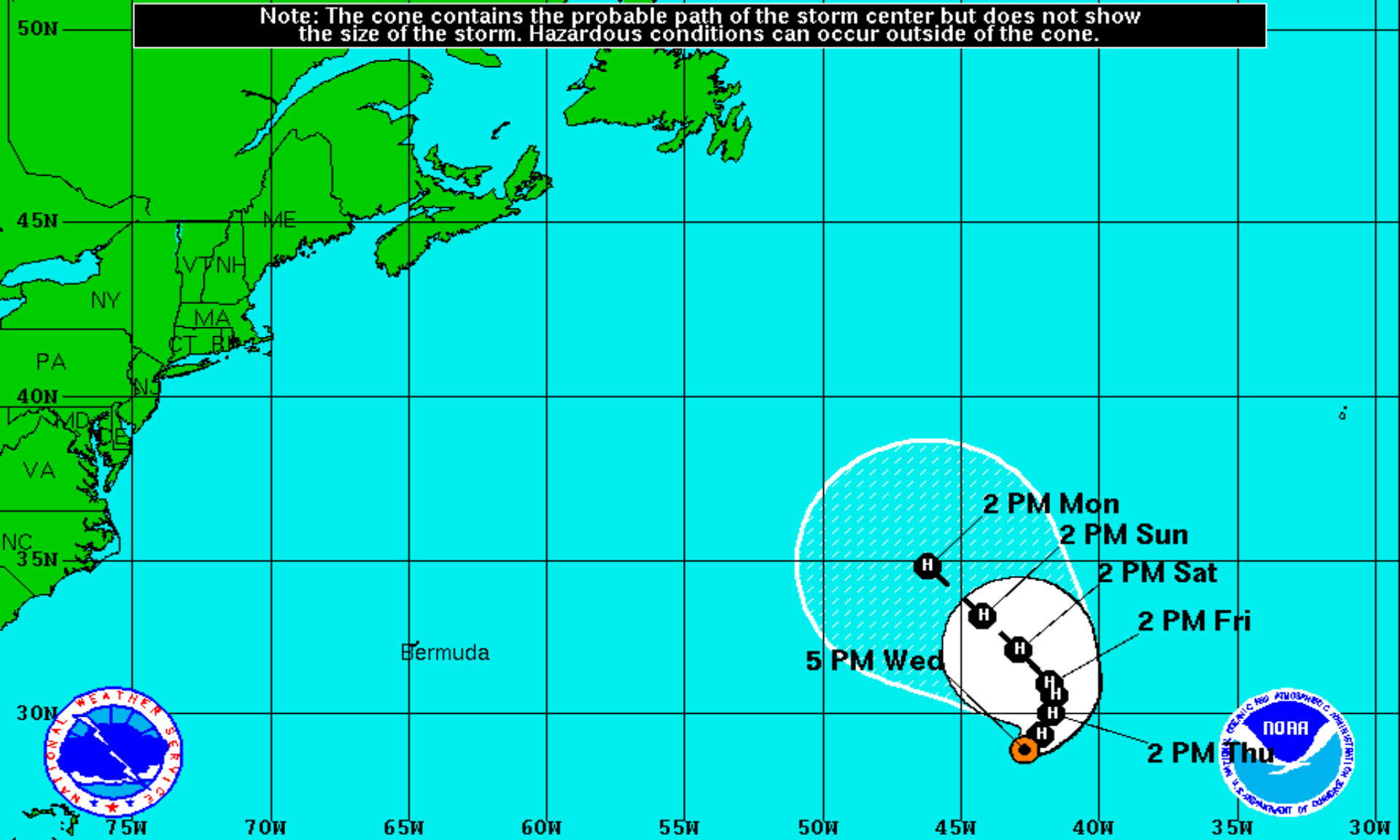
Minimum Pressure 998 mb (29.46 inches)

Blue Marble basemap imagery courtesy NASA


Satellite 6:48 PM UTC
2:48 PM EDT





wunderground.com



Tropical Storm Michael
 Wednesday September 5, 2012
 5 PM EDT Advisory 10
 NWS National Hurricane Center

Current Information: 
 Center Location 28.8 N 42.7 W
 Max Sustained Wind 70 mph
 Movement NE at 7 mph

Forecast Positions:
 Tropical Cyclone  Post-Tropical
 Sustained Winds: D < 39 mph
 S 39-73 mph H 74-110 mph M > 110mph

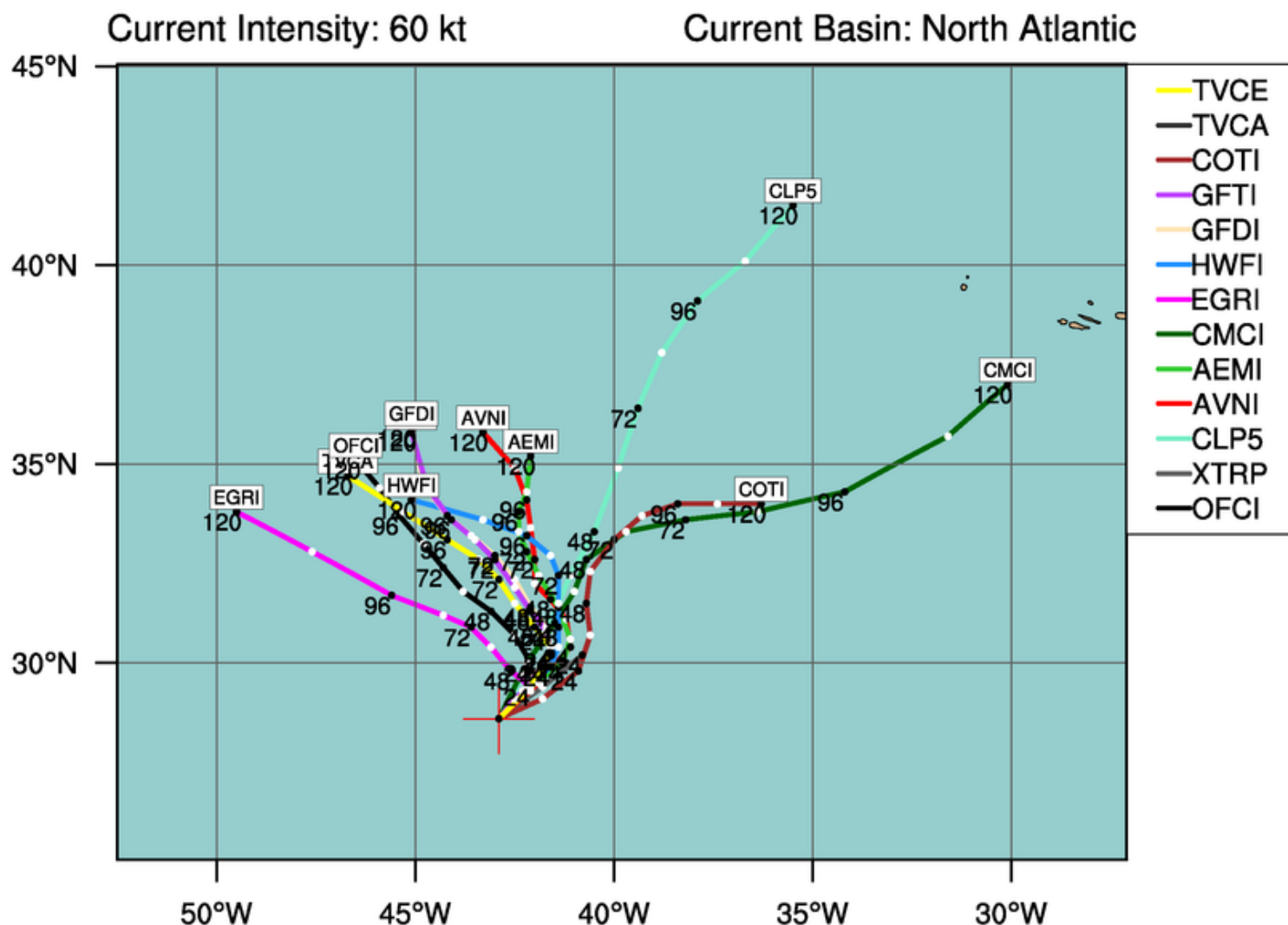
Potential Track Area:
 Day 1-3  Day 4-5

Watches:
 Hurricane  Trop.Storm

Warnings:
 Hurricane  Trop.Storm

TROPICAL STORM MICHAEL (AL13)

Early-cycle track guidance initialized at 1800 UTC, 05 September 2012

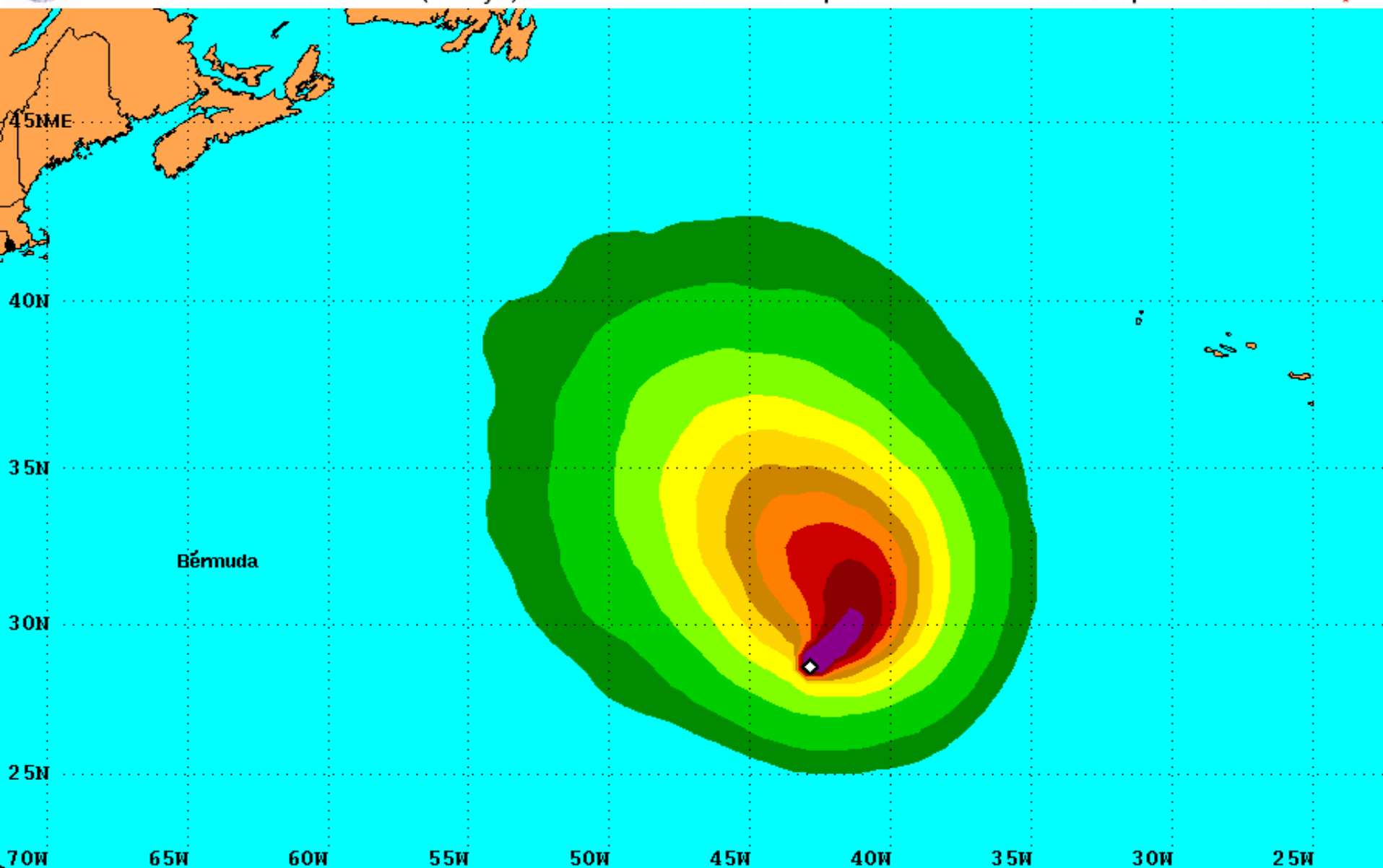


By using this plot, the user agrees to the UCAR Terms of Use
which can be accessed at: <http://www2.ucar.edu/terms-of-use>

Plot generated at 1952 UTC 05 September 2012

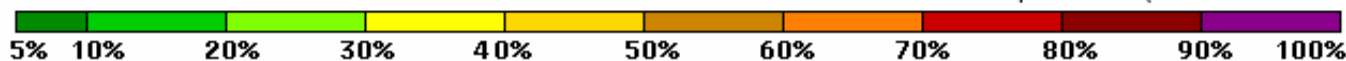


PRELIMINARY (SINGLE STORM) Tropical Storm Force Wind Speed Probabilities
For the 120 hours (5 days) from 2 PM AST Wed Sep 5 to 2 PM AST Mon Sep 10



Probability of sustained tropical storm force surface winds (1-minute average of 39 mph or greater)

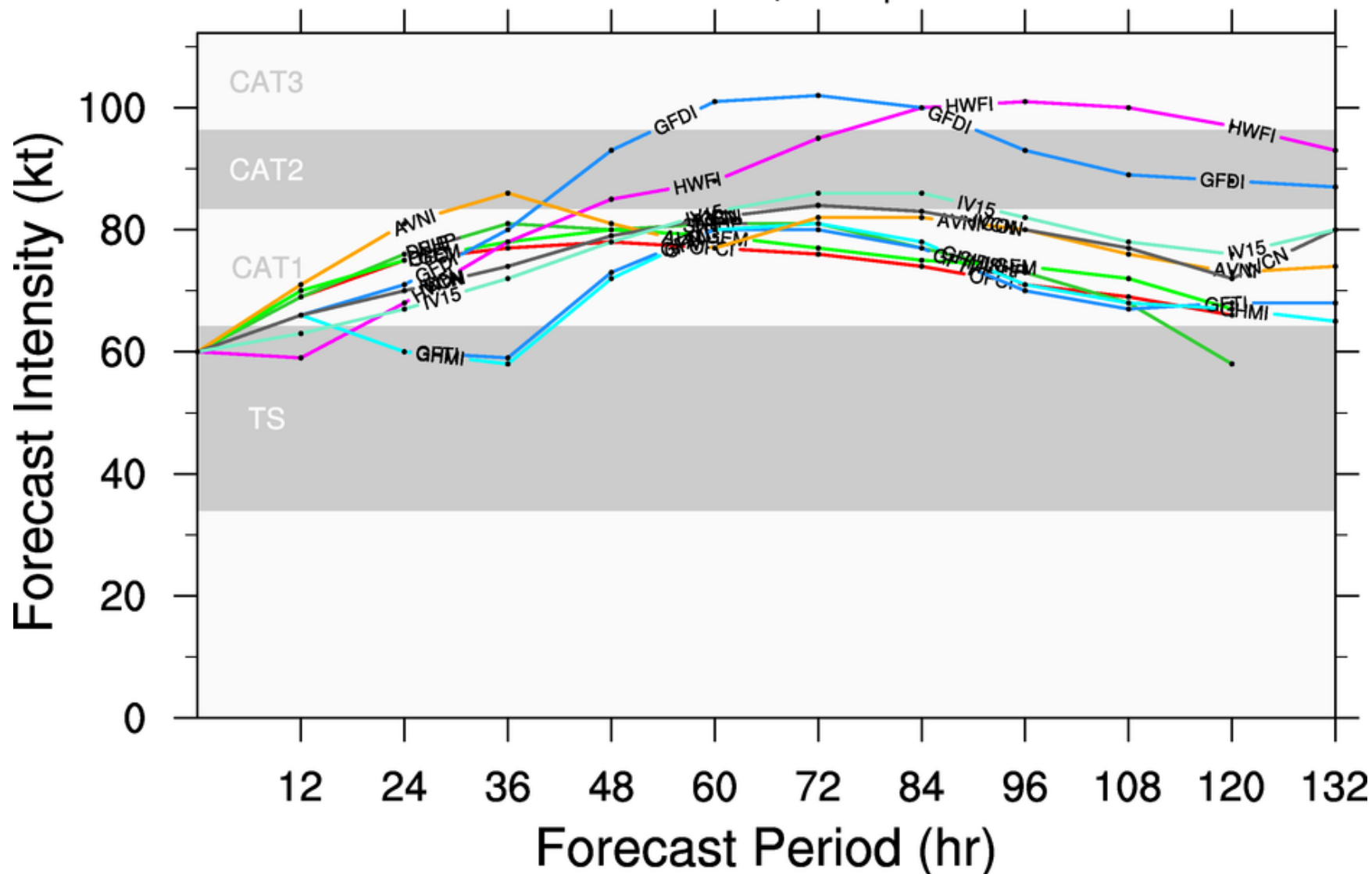
◇ indicates TROPICAL STORM MICHAEL center location at 2 PM AST Wed Sep 5 2012 (Forecast/Advisory #10)



TROPICAL STORM MICHAEL (AL13)

Early-cycle intensity guidance

initialized at 1800 UTC, 05 September 2012



By using this plot, the user agrees to the UCAR Terms of Use
which can be accessed at: <http://www2.ucar.edu/terms-of-use>

Plot generated at 1952 UTC 05 September 2012

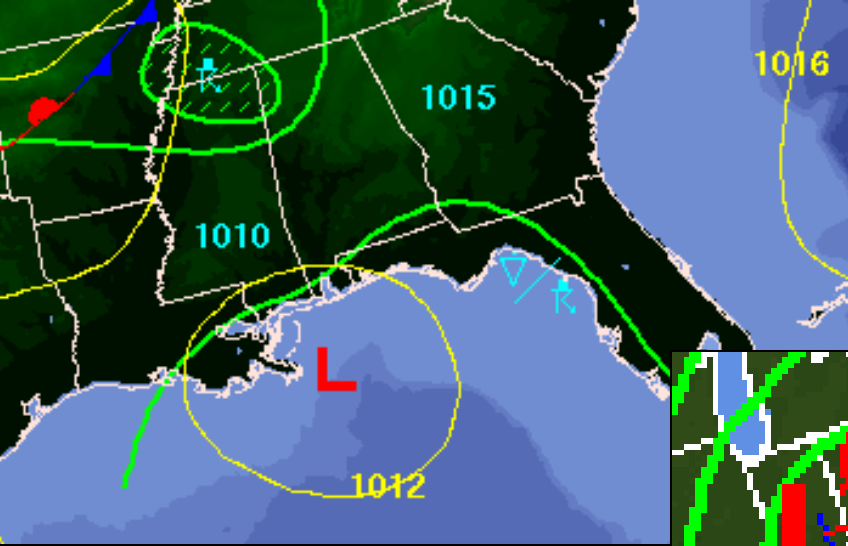


Intensity (Maximum Wind Speed) Probability Table
Tropical Storm Michael Advisory Number 10
5:00 PM AST Sep 5 2012

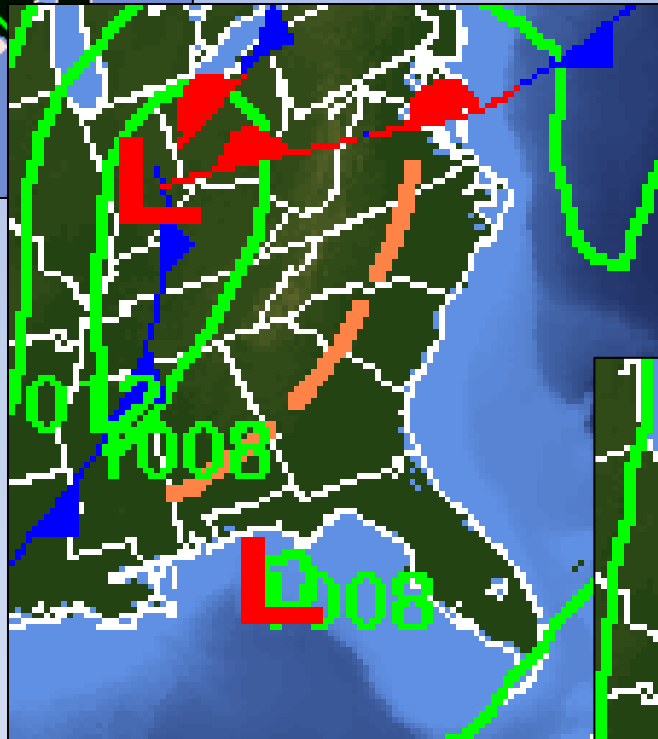


Wind Range (mph)	Forecast Time						
	12 hour for 2 AM Thu	24 hour for 2 PM Thu	36 hour for 2 AM Fri	48 hour for 2 PM Fri	72 hour for 2 PM Sat	96 hour for 2 PM Sun	120 hour for 2 PM Mon
Dissipated	<1%	<1%	<1%	<1%	1%	2%	4%
Tropical Depression (<39)	<1%	1%	1%	1%	3%	5%	14%
Tropical Storm (39-73)	47%	36%	29%	26%	32%	42%	55%
Hurricane (all categories)	53%	63%	70%	72%	65%	51%	28%
-- Category 1 (74-95)	49%	51%	49%	43%	41%	35%	23%
-- Category 2 (96-110)	3%	9%	15%	19%	16%	11%	4%
-- Category 3 (111-130)	1%	2%	5%	9%	7%	4%	1%
-- Category 4 (131-155)	<1%	<1%	1%	2%	1%	1%	<1%
-- Category 5 (>155)	<1%	<1%	<1%	<1%	<1%	<1%	<1%
Forecast Maximum Wind	75 mph	80 mph	85 mph	90 mph	90 mph	85 mph	75 mph

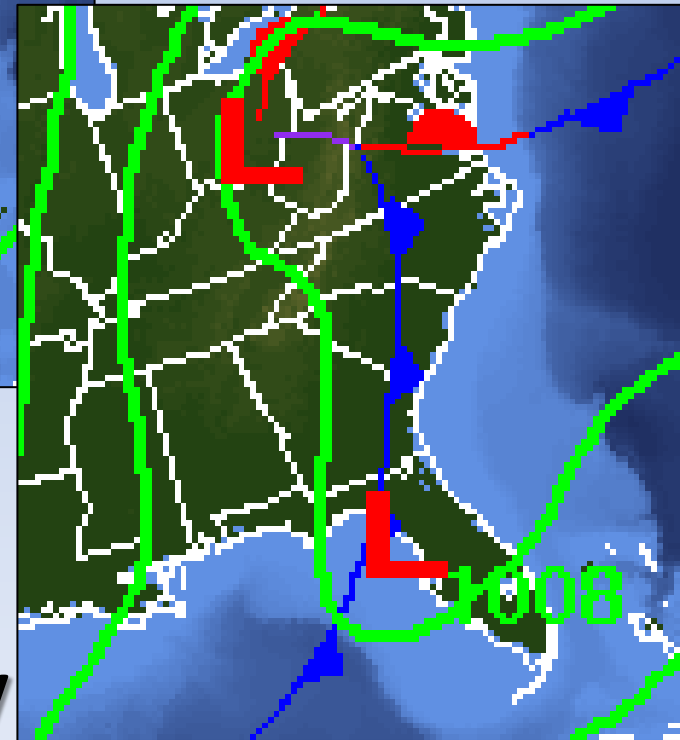
Forecast Weather Maps



Thursday – Friday



Saturday



Sunday

Rainfall Forecast through the Weekend

