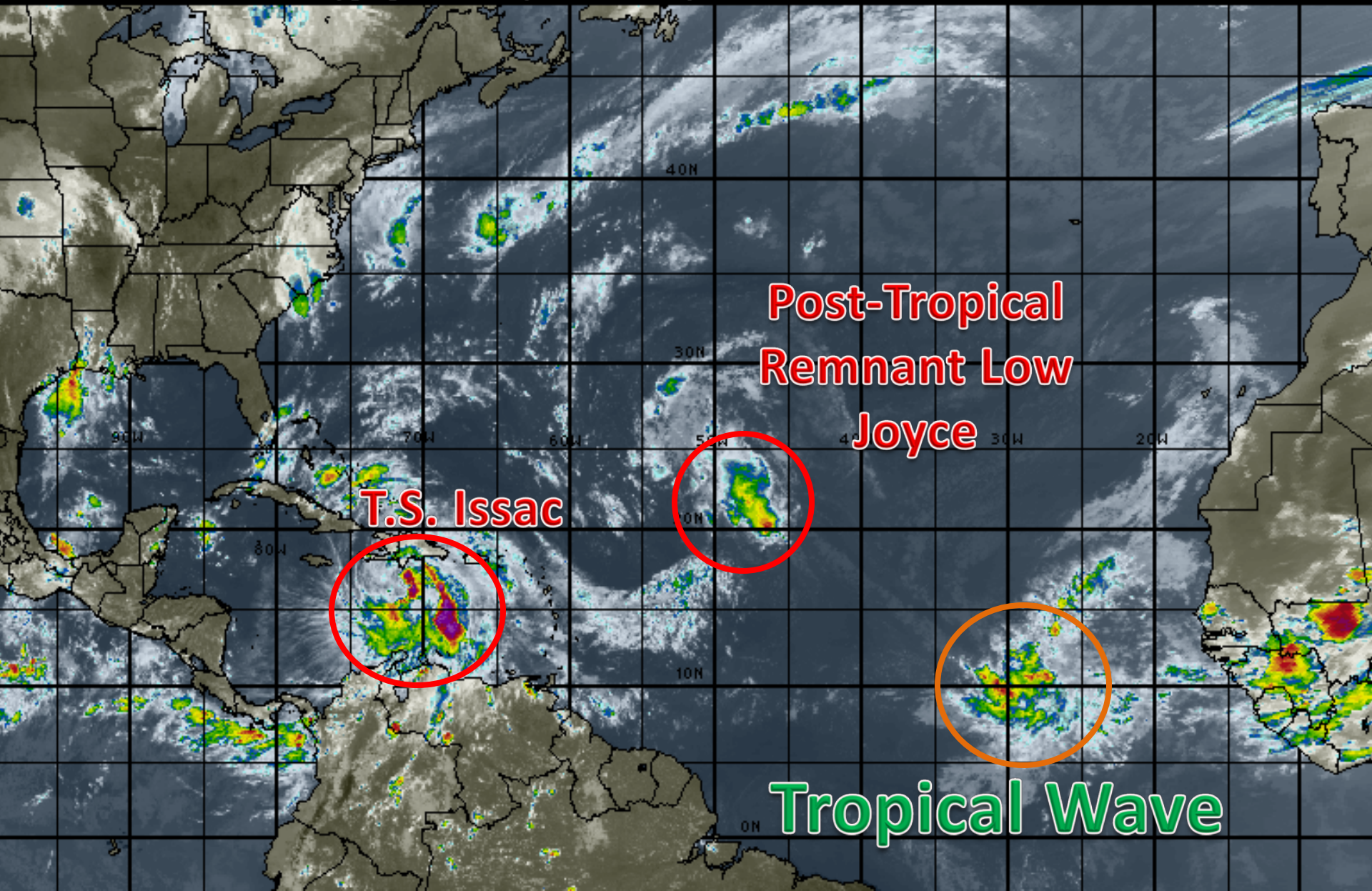


# Atlantic Basin Satellite Image

18:00 24-AUG-2012 GMT ©Copyright WSI Corporation <http://www.wsi.com>



# Tropical Storm Isaac

5 PM EDT Fri Aug 24 2012

Position 17.2 N 71.9 W

Maximum Winds 65 mph

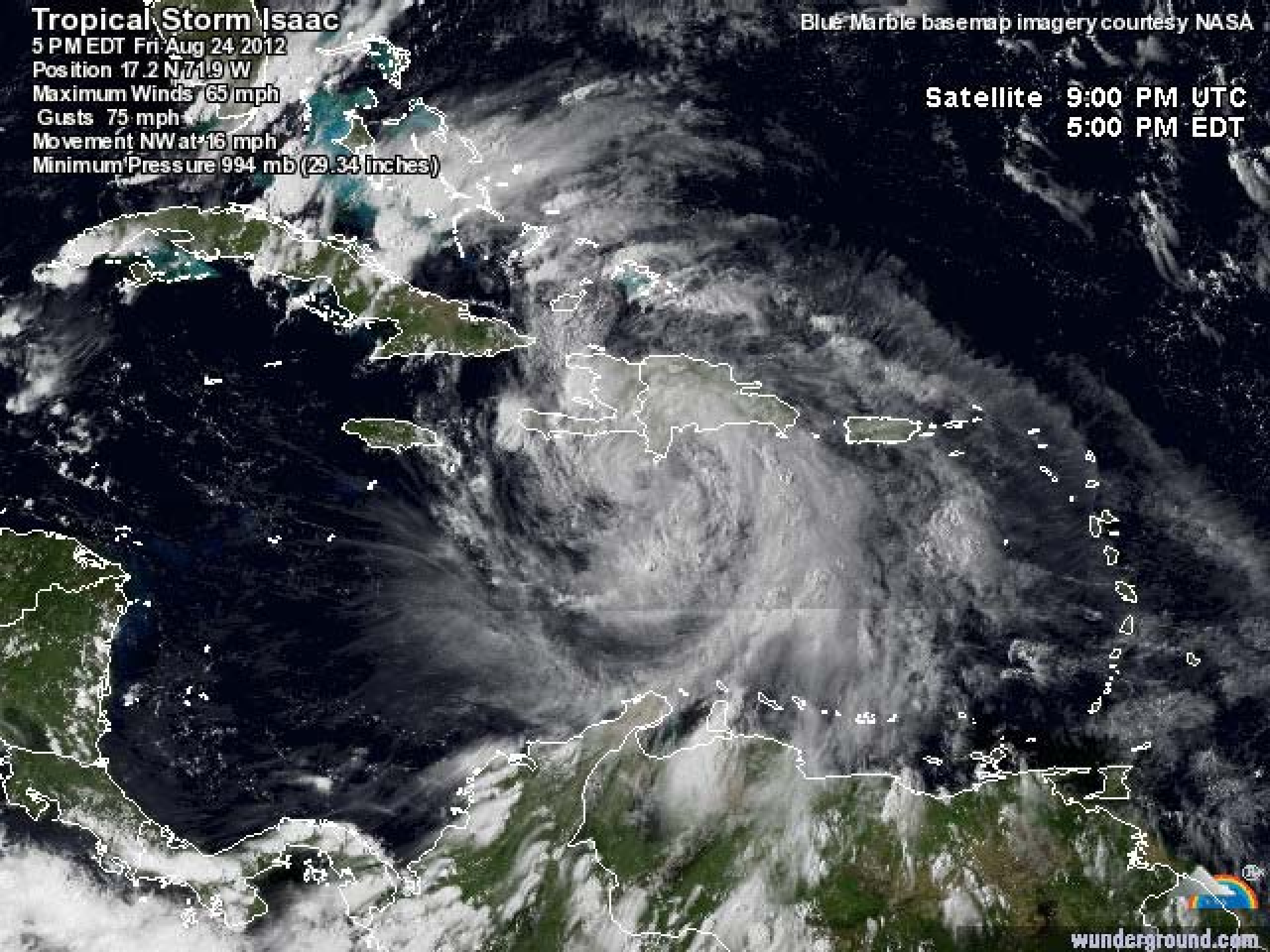
Gusts 75 mph

Movement NW at 16 mph

Minimum Pressure 994 mb (29.34 inches)

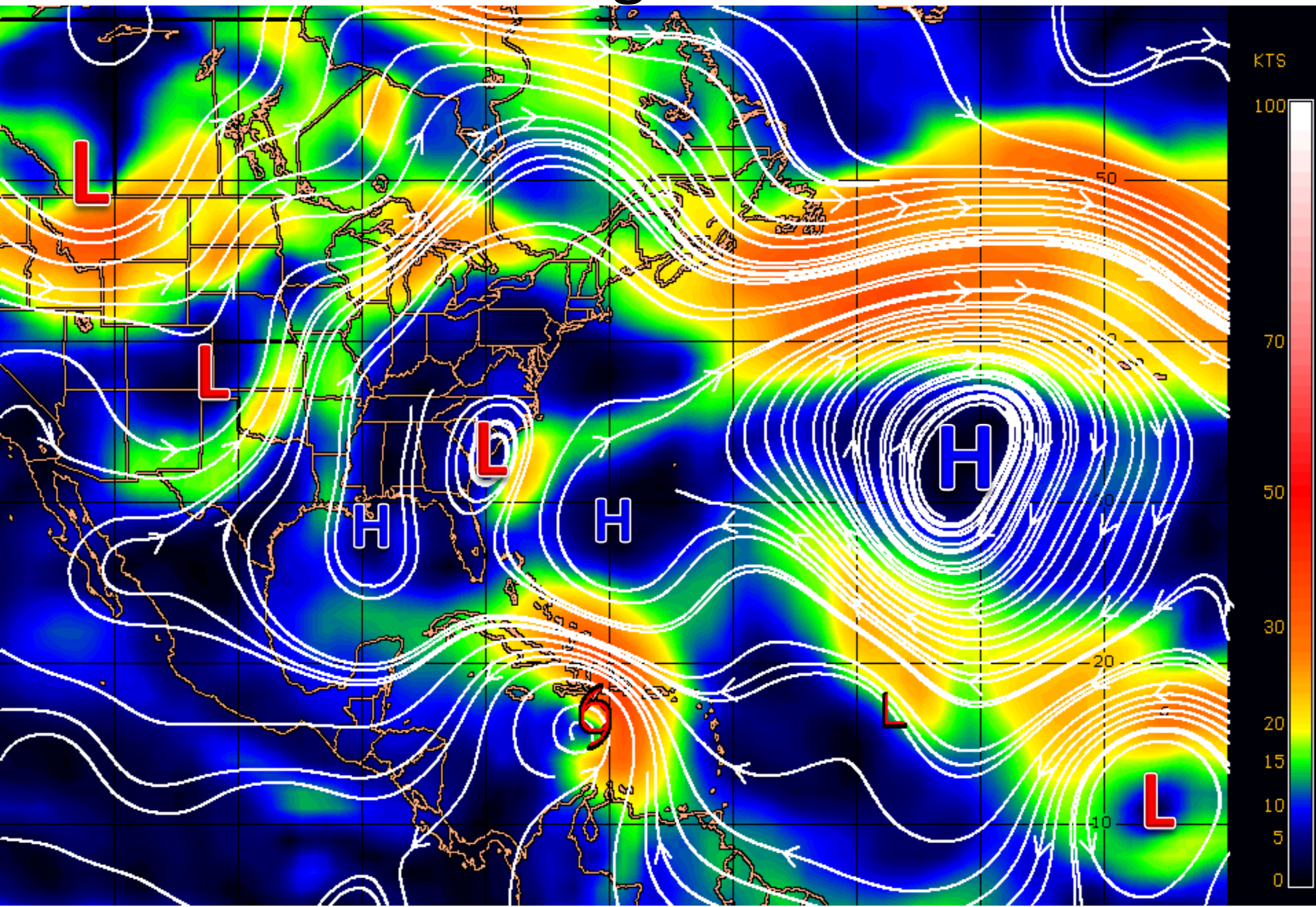
Blue Marble basemap imagery courtesy NASA

Satellite 9:00 PM UTC  
5:00 PM EDT

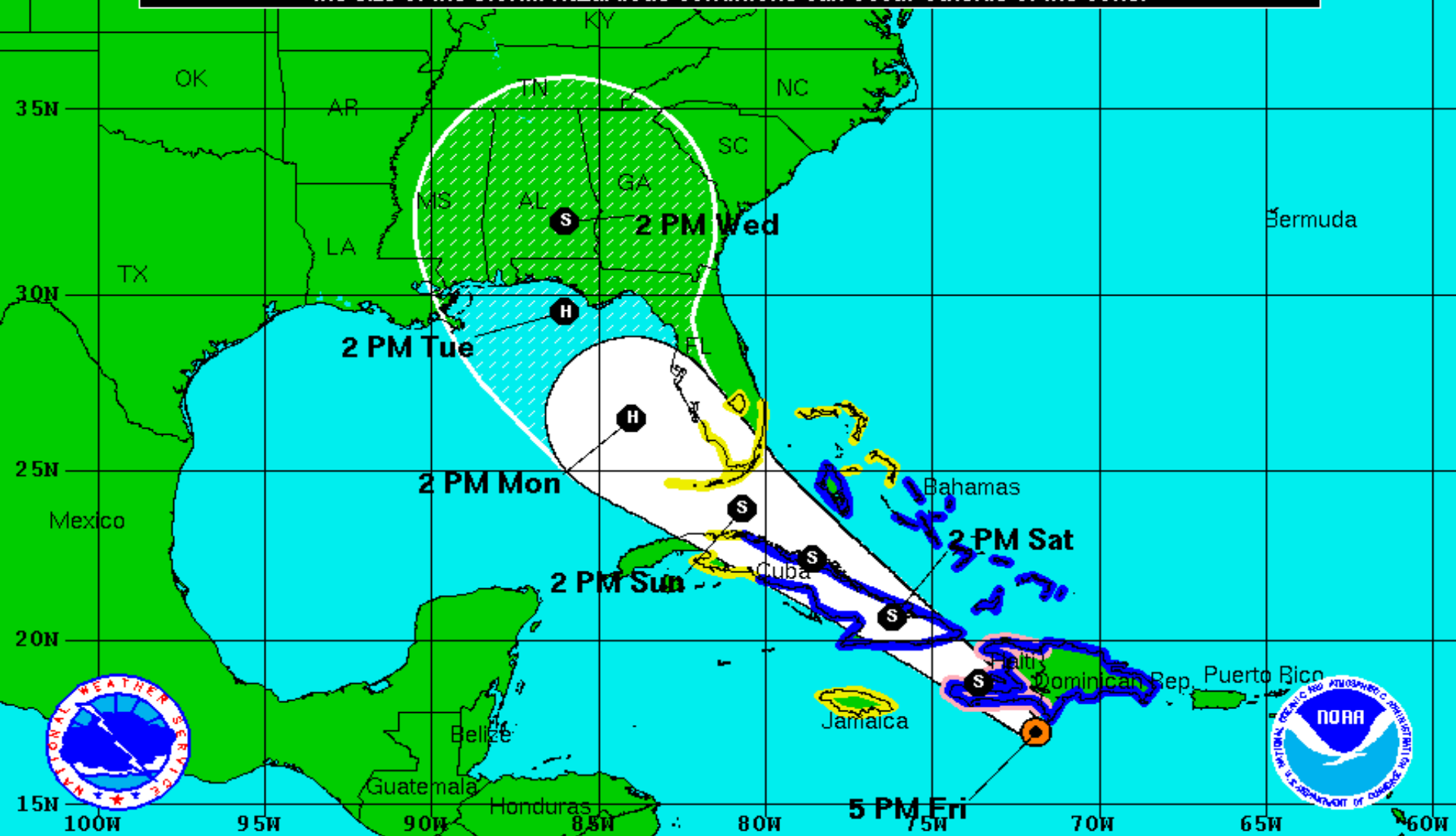





# Steering Currents





Note: The cone contains the probable path of the storm center but does not show the size of the storm. Hazardous conditions can occur outside of the cone.



**Tropical Storm Isaac**  
 Friday August 24, 2012  
 5 PM EDT Advisory 15  
 NWS National Hurricane Center

**Current Information:**   
 Center Location 17.2 N 71.9 W  
 Max Sustained Wind 65 mph  
 Movement NW at 16 mph

**Forecast Positions:**  
 Tropical Cyclone  Post-Tropical  
 Sustained Winds: D < 39 mph  
 S 39-73 mph H 74-110 mph M > 110mph




**Potential Track Area:**  
 Day 1-3  Day 4-5

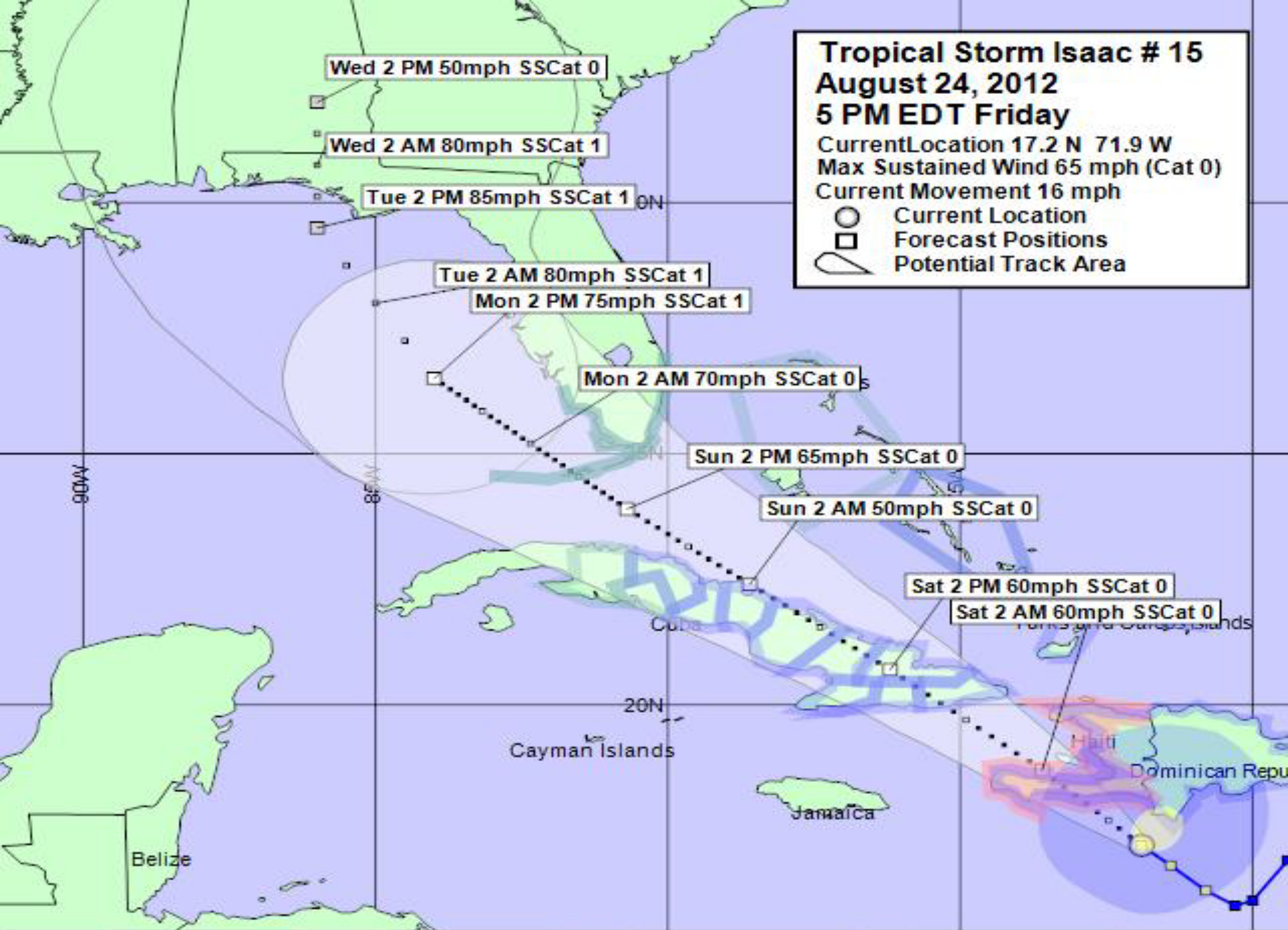
**Watches:**  
 Hurricane  Trop.Storm

**Warnings:**  
 Hurricane  Trop.Storm

**Tropical Storm Isaac # 15**  
**August 24, 2012**  
**5 PM EDT Friday**

Current Location 17.2 N 71.9 W  
Max Sustained Wind 65 mph (Cat 0)  
Current Movement 16 mph

 Current Location  
 Forecast Positions  
 Potential Track Area



Hurricane Warning

Hurricane Watch

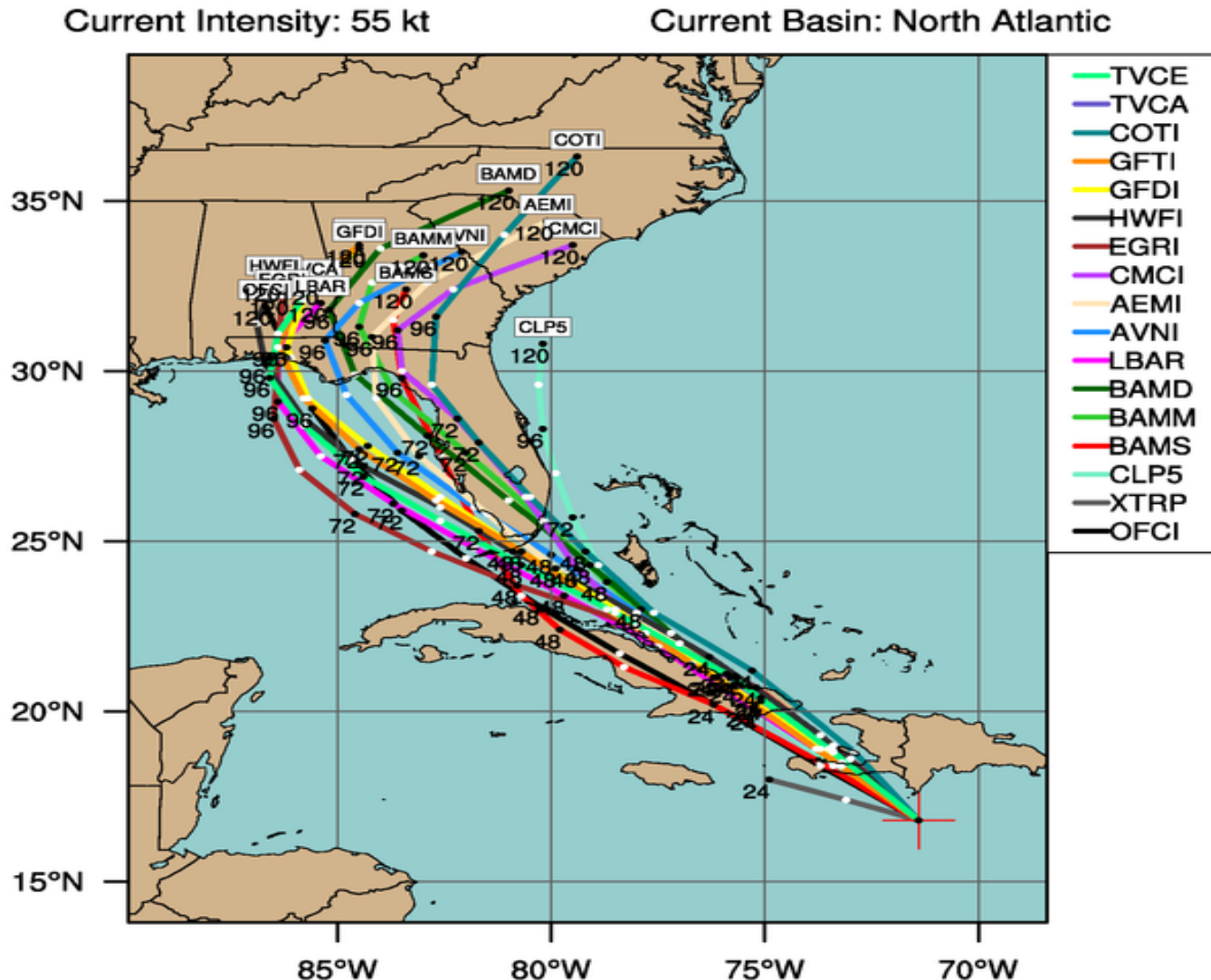
Trop. Storm Warning

Trop. Storm Watch



# TROPICAL STORM ISAAC (AL09)

Early-cycle track guidance initialized at 1800 UTC, 24 August 2012



By using this plot, the user agrees to the UCAR Terms of Use  
which can be accessed at: <http://www2.ucar.edu/terms-of-use>

Plot generated at 1952 UTC 24 August 2012

# Tropical Storm Isaac

2 PM EDT Fri Aug 24 2012

Models: Points 12 hours apart

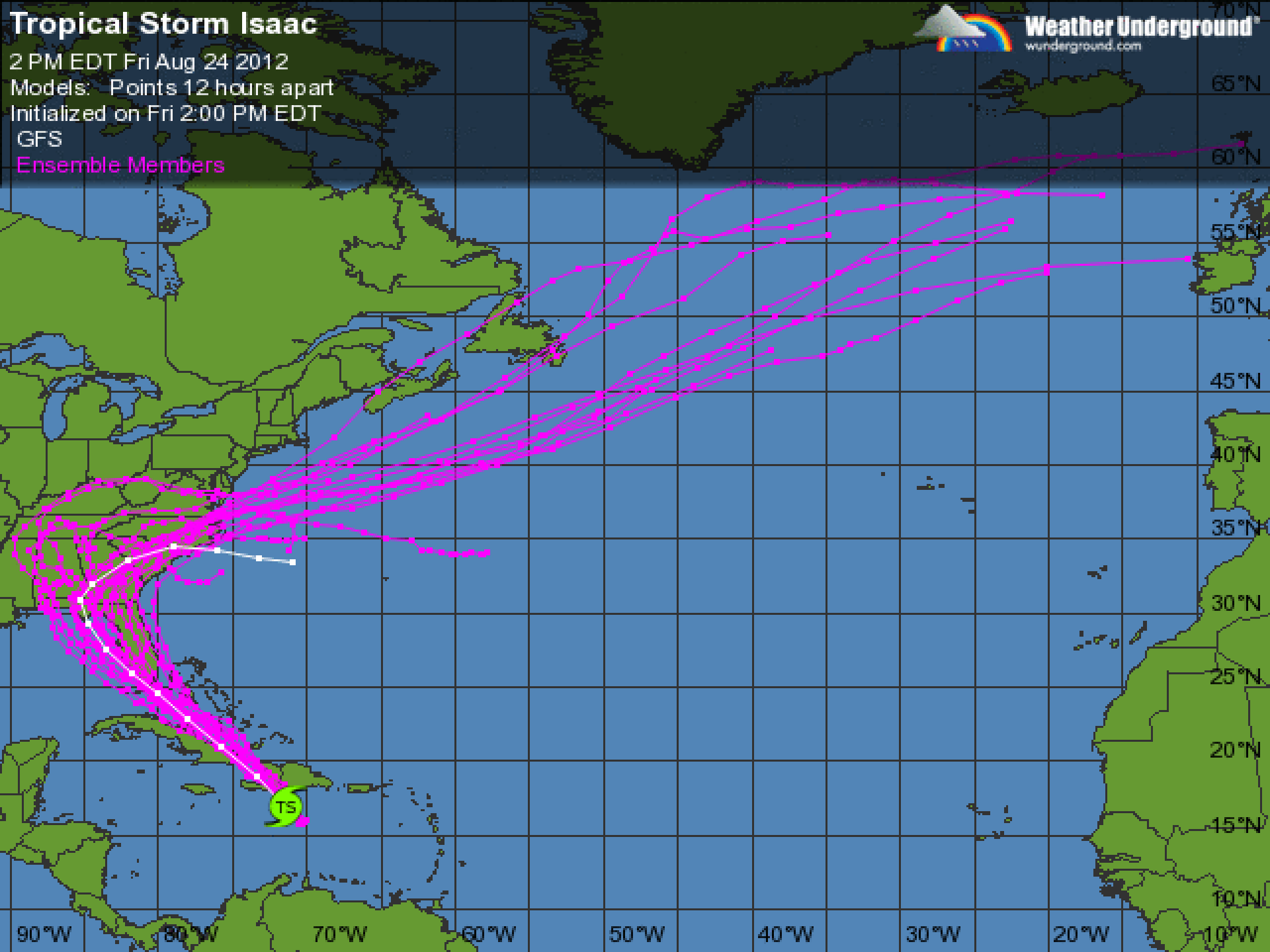
Initialized on Fri 2:00 PM EDT

GFS

Ensemble Members

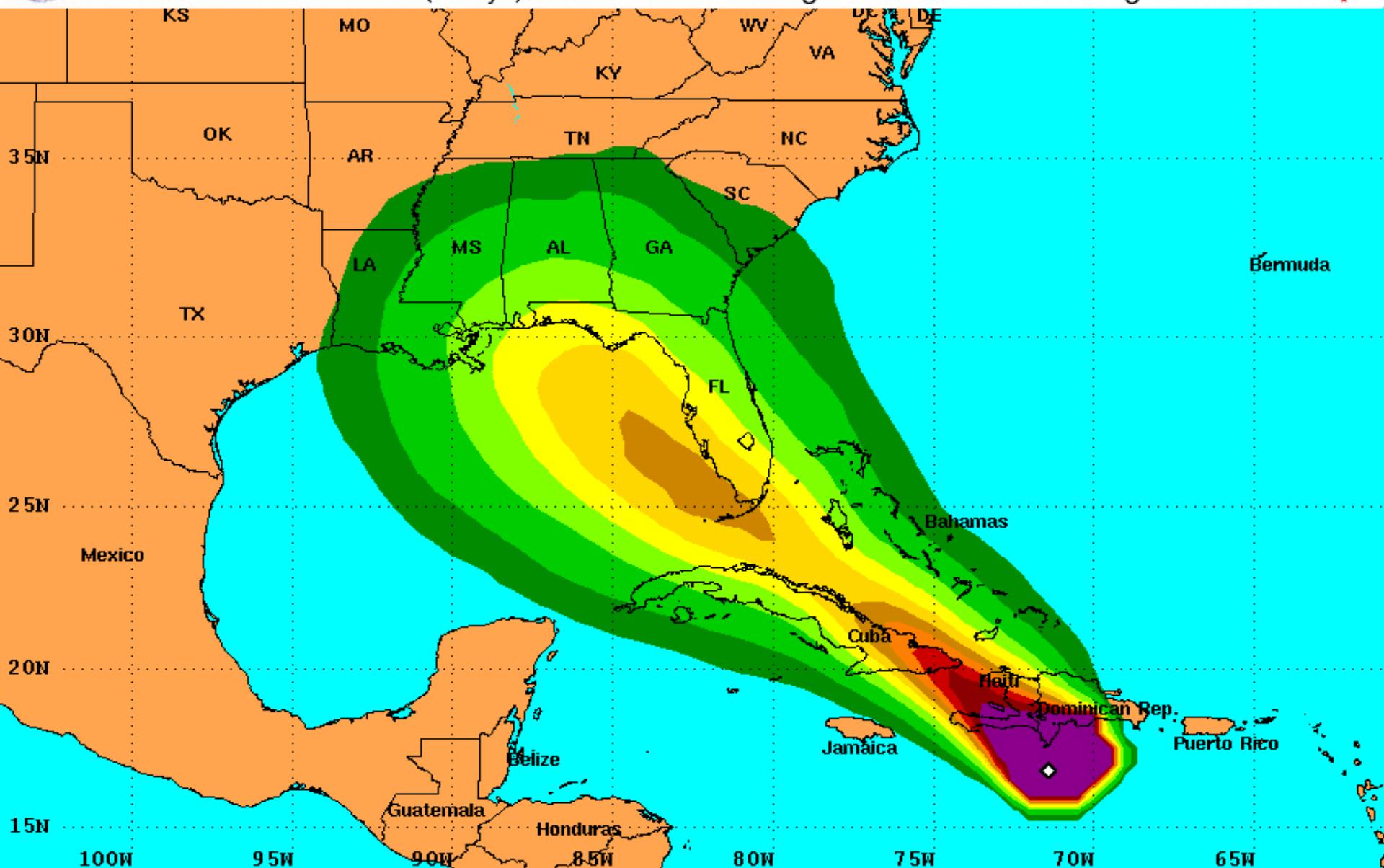


Weather Underground  
wunderground.com





# PRELIMINARY (SINGLE STORM) Tropical Storm Force Wind Speed Probabilities For the 120 hours (5 days) from 2 PM EDT Fri Aug 24 to 2 PM EDT Wed Aug 29



Probability of sustained tropical storm force surface winds (1-minute average of 39 mph or greater)

◇ indicates TROPICAL STORM ISAAC center location at 2 PM EDT Fri Aug 24 2012 (Forecast/Advisory #15)

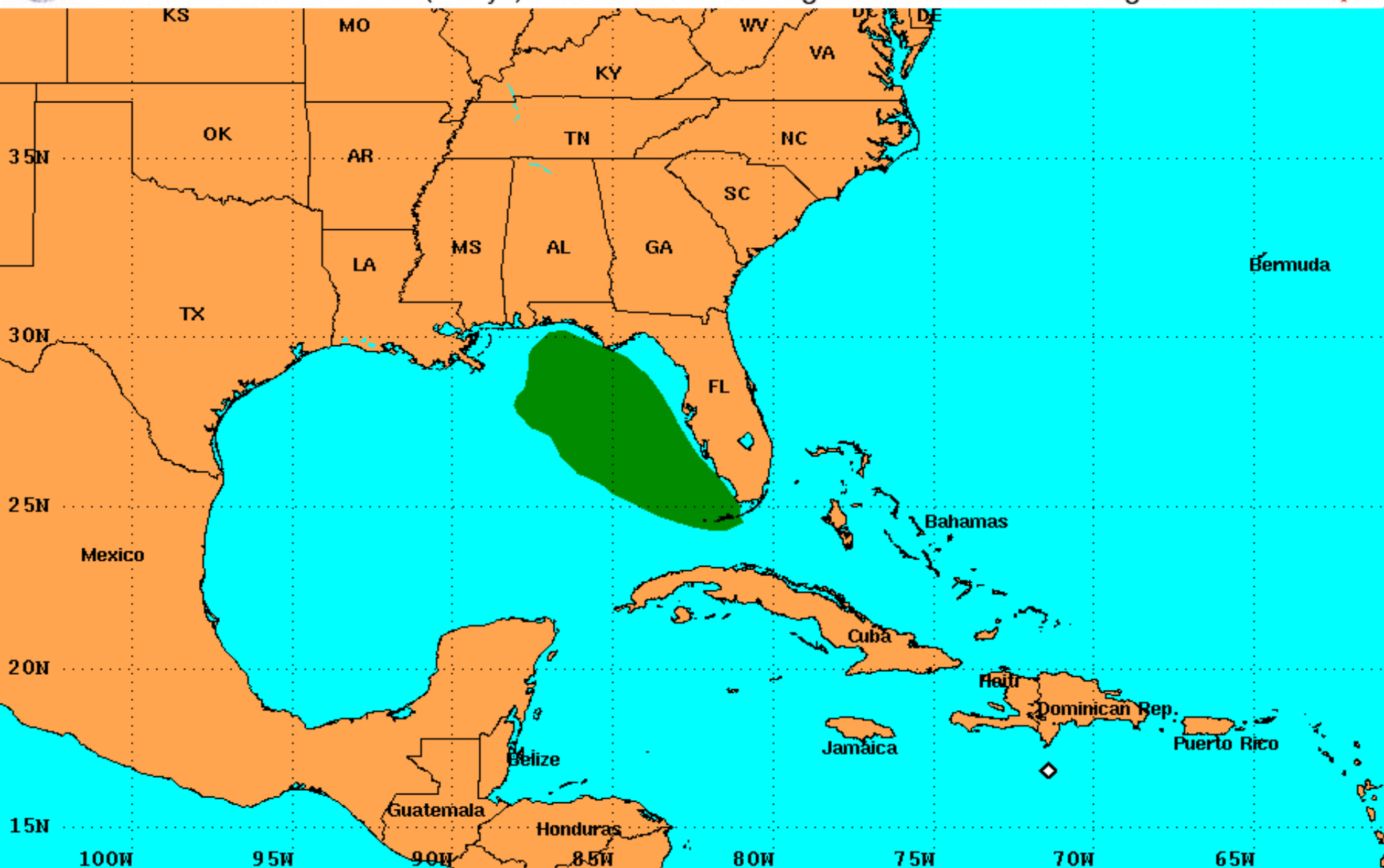




County	Begin/End 34 Kt (39 Mph)	Begin/End 64 Kt (74 Mph)	Max Wind Speed	Remarks	County	Begin/End 34 Kt (39 Mph)	Begin/End 64 Kt (74 Mph)	Max Wind Speed and Time	Remarks
Broward	26/ Early afternoon 27/ Early morning	--	41 MPH	TS force winds probability based most likely onset period 26/ Morning.	Levy	--	--	28 MPH	
					Citrus	--	--	26 MPH	
					Hernando	--	--	26 MPH	
Collier	26/ Early afternoon 27/ Early afternoon	--	53 MPH	TS force winds probability based most likely onset period 26/ Early afternoon.	Pasco	--	--	35 MPH	
					Pinellas	27/ Late morning 28/ Early morning	--	43 MPH	TS force winds could start as early as 26/ Early evening.
Miami-Dade	26/ Morning 27/ Early morning	--	49 MPH	TS force winds probability based most likely onset period 26/ Morning.	Hillsborough	27/ Late morning 28/ Early morning	--	43 MPH	TS force winds could start as early as 26/ Early afternoon.
					Manatee	27/ Early afternoon 28/ Shortly after midnight	--	41 MPH	TS force winds could start as early as 26/ Early afternoon.
Glades	26/ Early evening 27/ Late morning	--	40 MPH	TS force winds probability based most likely onset period 26/ Early afternoon.	Sarasota	27/ Late morning 27/ Late evening	--	41 MPH	TS force winds could start as early as 26/ Early afternoon.
Hendry	26/ Late afternoon 27/ Late morning	--	41 MPH	TS force winds probability based most likely onset period 26/ Early afternoon.	DeSoto	--	--	25 MPH	
					Charlotte	27/ Morning 27/ Late evening	--	43 MPH	TS force winds could start as early as 26/ Early afternoon.
Palm Beach	26/ Early evening 27/ Morning	--	40 MPH	TS force winds probability based most likely onset period 26/ Morning.	Lee	27/ Early morning 27/ Late evening	--	46 MPH	TS force winds could start as early as 26/ Early afternoon.
					Sumter	--	--	21 MPH	
Mainland Monroe	26/ Late morning 27/ Late morning	--	54 MPH	TS force winds probability based most likely onset period 26/ Morning.	Polk	--	--	22 MPH	
					Hardee	--	--	23 MPH	
					Highlands	--	--	23 MPH	



# PRELIMINARY (SINGLE STORM) Hurricane Force Wind Speed Probabilities For the 120 hours (5 days) from 2 PM EDT Fri Aug 24 to 2 PM EDT Wed Aug 29



Probability of sustained hurricane force surface winds (1-minute average of 74 mph or greater)

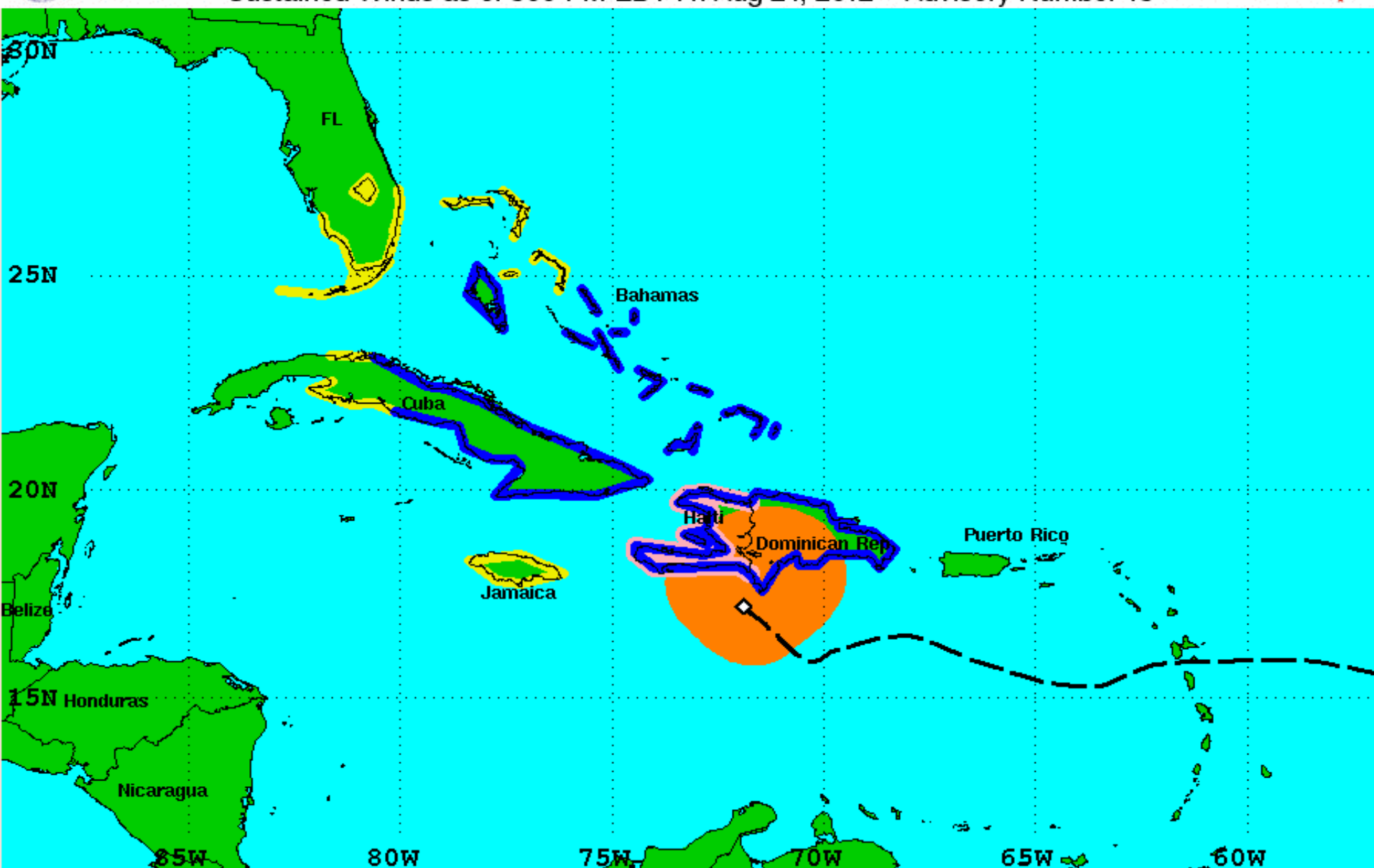
◆ indicates TROPICAL STORM ISAAC center location at 2 PM EDT Fri Aug 24 2012 (Forecast/Advisory #15)





# Surface Wind Field of Tropical Storm Isaac

Sustained Winds as of 500 PM EDT Fri Aug 24, 2012    Advisory Number 15



## Watches:

- Hurricane Watch
- Tropical Storm Watch

## Warnings:

- Hurricane Warning
- Tropical Storm Warning

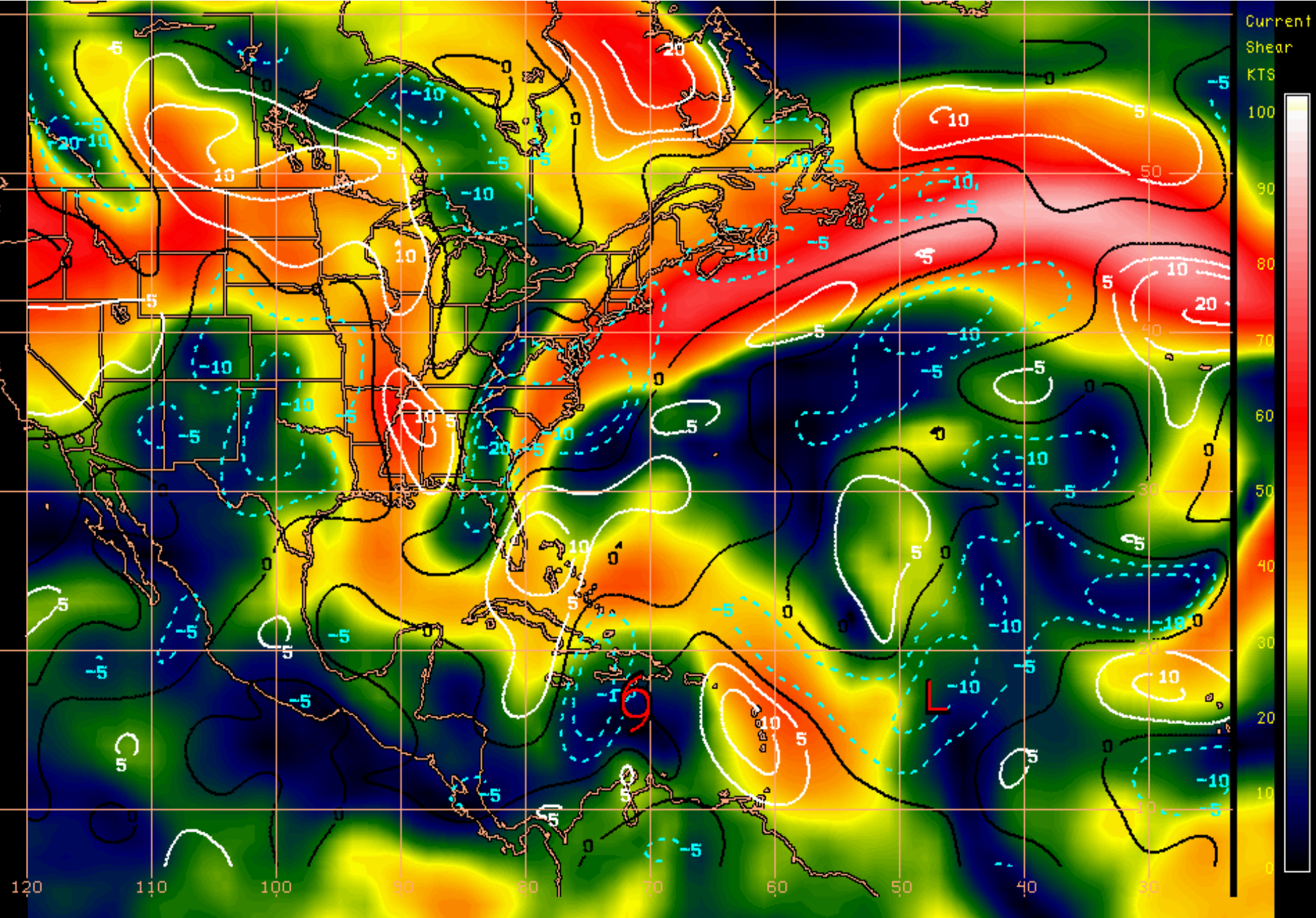
## Sustained Winds:

- Hurricane Force
- Tropical Storm Force

## Position:

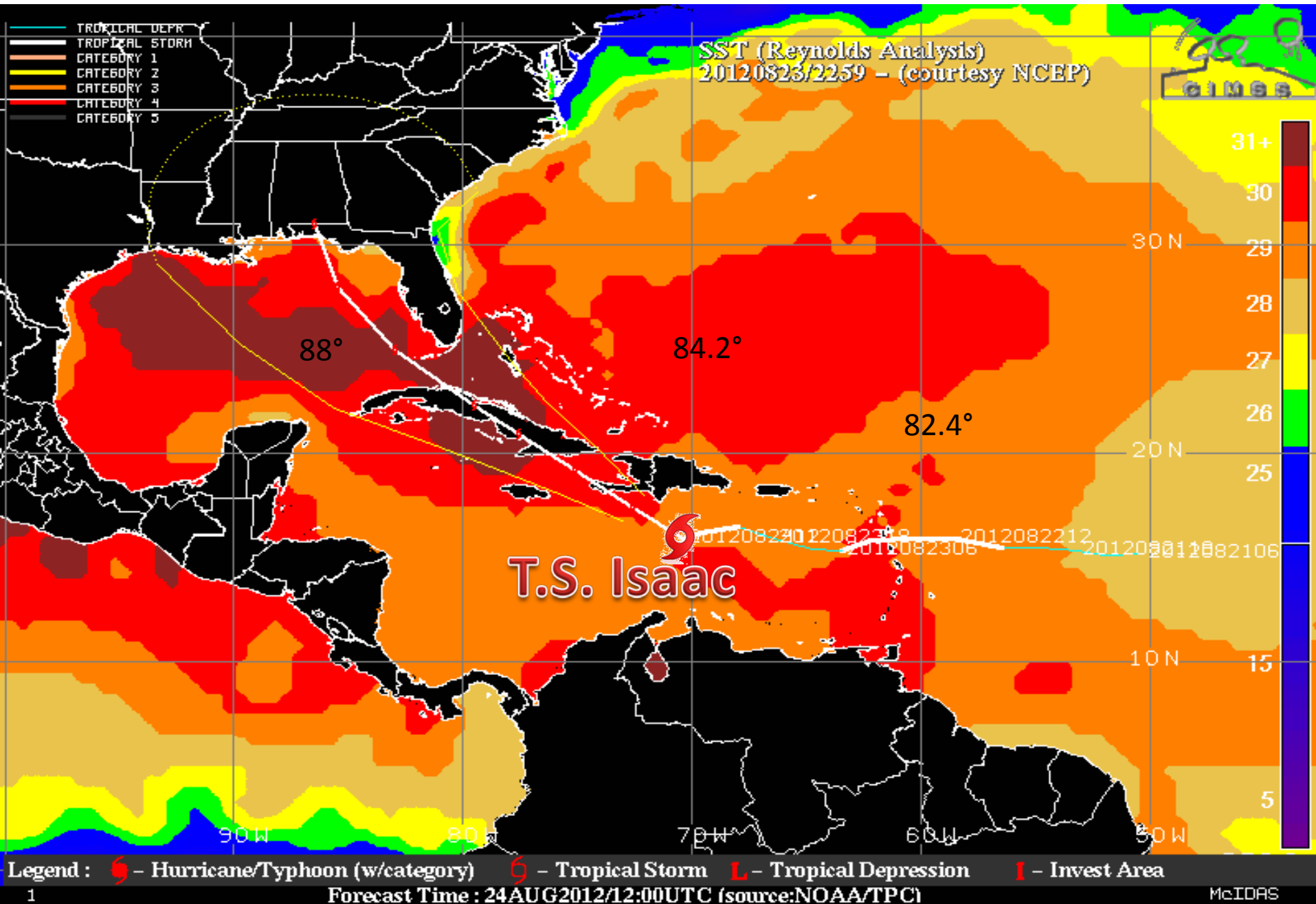
- ◇ Center as of 500 PM EDT
- Past Track





Shear Tendency (KTS) Over Past 24 Hours: Increasing — Decreasing ----

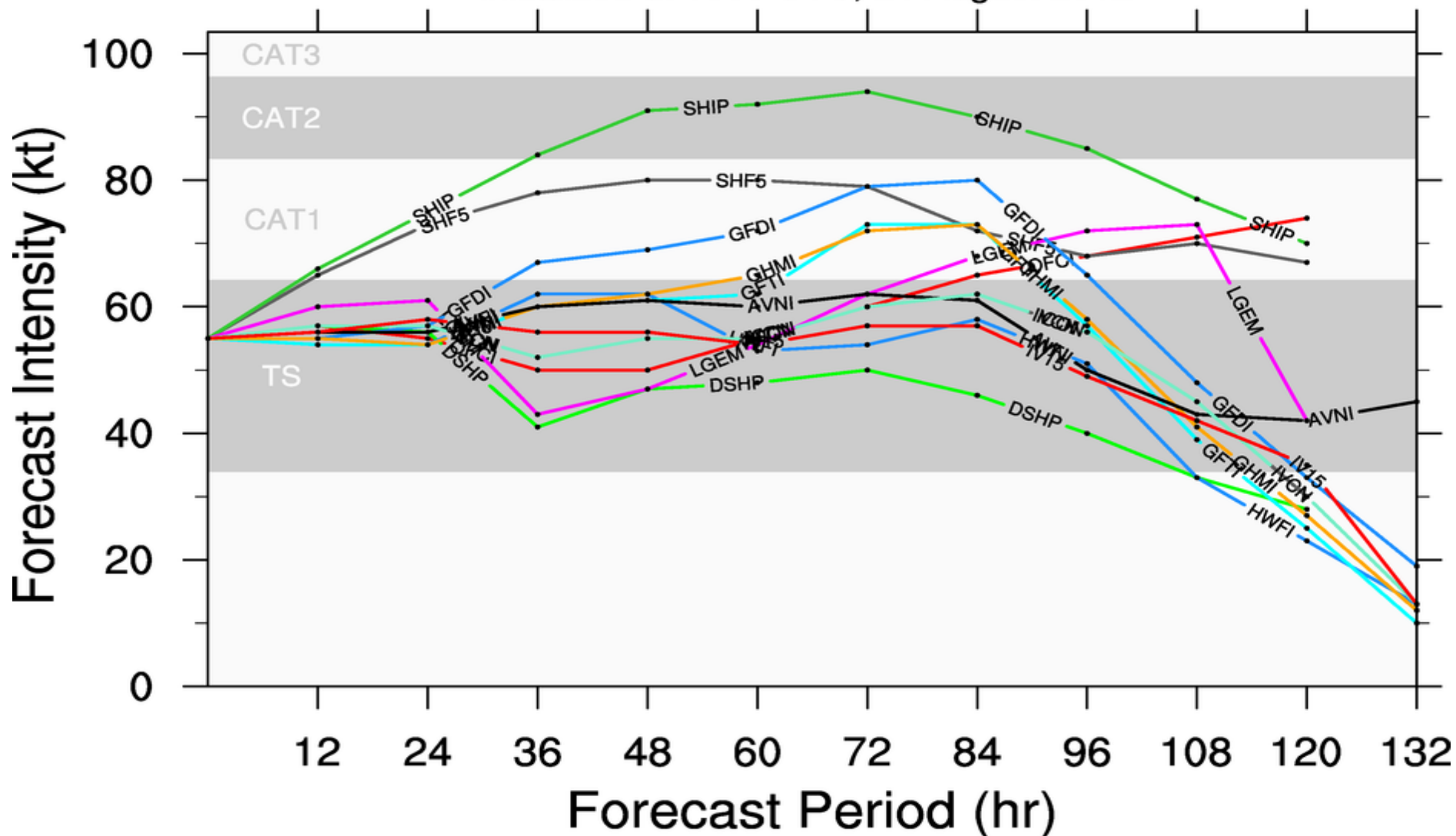
# Sea Surface Temperatures Around Isaac



# TROPICAL STORM ISAAC (AL09)

## Early-cycle intensity guidance

initialized at 1800 UTC, 24 August 2012



By using this plot, the user agrees to the UCAR Terms of Use  
which can be accessed at: <http://www2.ucar.edu/terms-of-use>

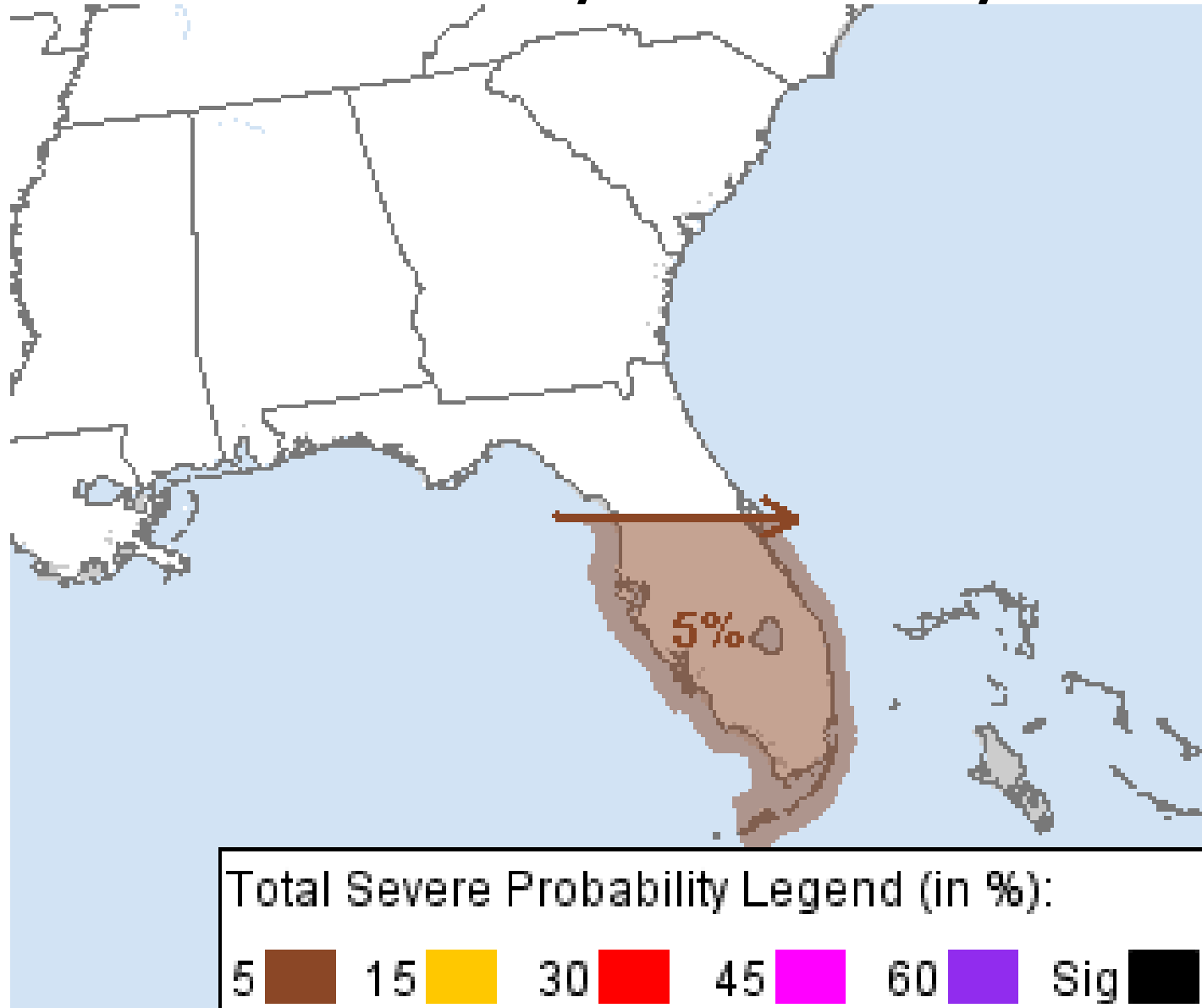
Plot generated at 1952 UTC 24 August 2012



# Tropical Storm Force Wind Timing

Location	34kt(39mph)	50kt(58mph)	64kt(74mph)	64ktEND(dur)	50ktEND(dur)	34ktEND(dur)	Peak Wind
FL Dade	08/26 08E					08/27 09E [25]	47kt 08/26 18E
FL Monroe	08/26 08E	08/26 20E			08/26 22E [02]	08/27 11E [27]	60kt 08/26 20E
FL Collier	08/26 12E					08/27 16E [28]	48kt 08/27 02E
FL Broward	08/26 12E					08/27 09E [21]	43kt 08/26 22E
FL Hendry	08/26 15E					08/27 14E [23]	43kt 08/27 00E
FL Palm Beach	08/26 15E					08/27 09E [18]	40kt 08/26 23E
FL Lee	08/26 17E					Continue	45kt 08/27 02E
FL Charlotte	08/26 19E					Continue	44kt 08/27 06E
FL Glades	08/26 19E					08/27 14E [19]	41kt 08/27 04E
FL Desoto	08/26 22E					Continue	42kt 08/27 07E
FL Highlands	08/26 22E					08/27 14E [16]	39kt 08/27 03E
FL Martin	08/26 23E					08/27 06E [07]	35kt 08/26 23E
FL Okeechobee	08/26 23E					08/27 06E [07]	35kt 08/27 00E
FL Sarasota	08/26 23E					Continue	44kt 08/27 08E
FL Manatee	08/27 00E					Continue	41kt 08/27 07E
FL Hardee	08/27 01E					Continue	40kt 08/27 09E
FL Polk	08/27 03E					Continue	38kt 08/27 09E
FL Pinellas	08/27 04E					Continue	41kt 08/27 12E
FL Hillsborough	08/27 04E					Continue	40kt 08/27 10E
FL Pasco	08/27 09E					Continue	39kt 08/27 17E
FL Hernando	08/27 12E					Continue	36kt 08/27 15E
FL Citrus	08/27 17E					Continue	34kt 08/27 17E

# Severe Weather and Tornado Probability on Sunday





Intensity (Maximum Wind Speed) Probability Table  
Tropical Storm Isaac Advisory Number 15  
5:00 PM EDT Aug 24 2012



Wind Range (mph)	Forecast Time						
	12 hour for 2 AM Sat	24 hour for 2 PM Sat	36 hour for 2 AM Sun	48 hour for 2 PM Sun	72 hour for 2 PM Mon	96 hour for 2 PM Tue	120 hour for 2 PM Wed
Dissipated	<1%	1%	9%	8%	11%	20%	29%
Tropical Depression (<39)	4%	11%	30%	16%	11%	14%	24%
Tropical Storm (39-73)	90%	78%	57%	59%	48%	35%	37%
Hurricane (all categories)	6%	10%	5%	18%	30%	32%	10%
-- Category 1 (74-95)	5%	9%	4%	15%	23%	22%	7%
-- Category 2 (96-110)	1%	1%	1%	3%	5%	7%	3%
-- Category 3 (111-130)	<1%	<1%	<1%	1%	2%	3%	1%
-- Category 4 (131-155)	<1%	<1%	<1%	<1%	<1%	1%	<1%
-- Category 5 (>155)	<1%	<1%	<1%	<1%	<1%	<1%	<1%
Forecast Maximum Wind	60 mph	60 mph	50 mph	65 mph	75 mph	85 mph	50 mph



# Post-Tropical Cyclone Joyce

11 AM EDT Fri Aug 24 2012

Position 17.8 N 46.2 W

Maximum Winds 35 mph

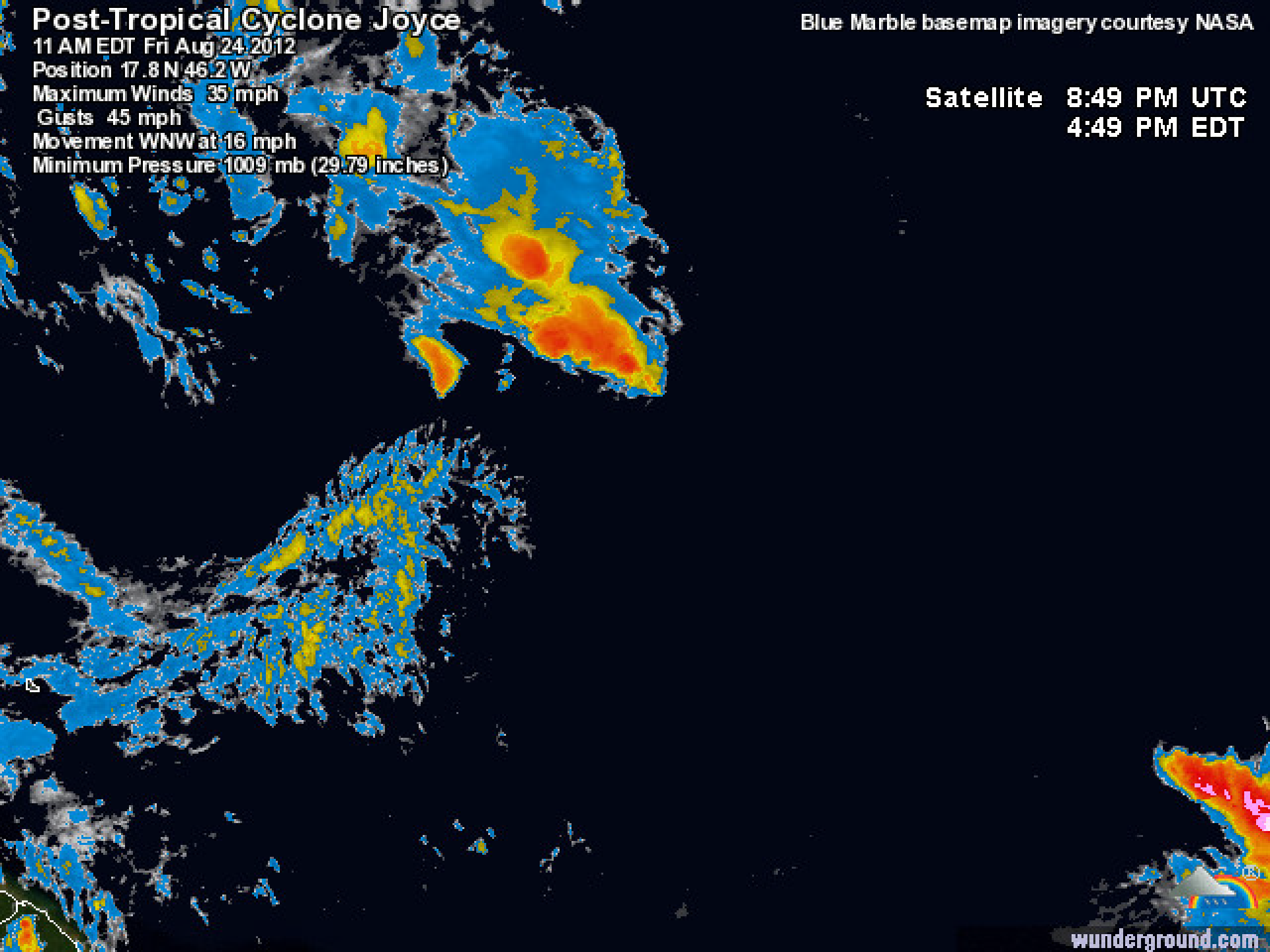
Gusts 45 mph

Movement WNW at 16 mph

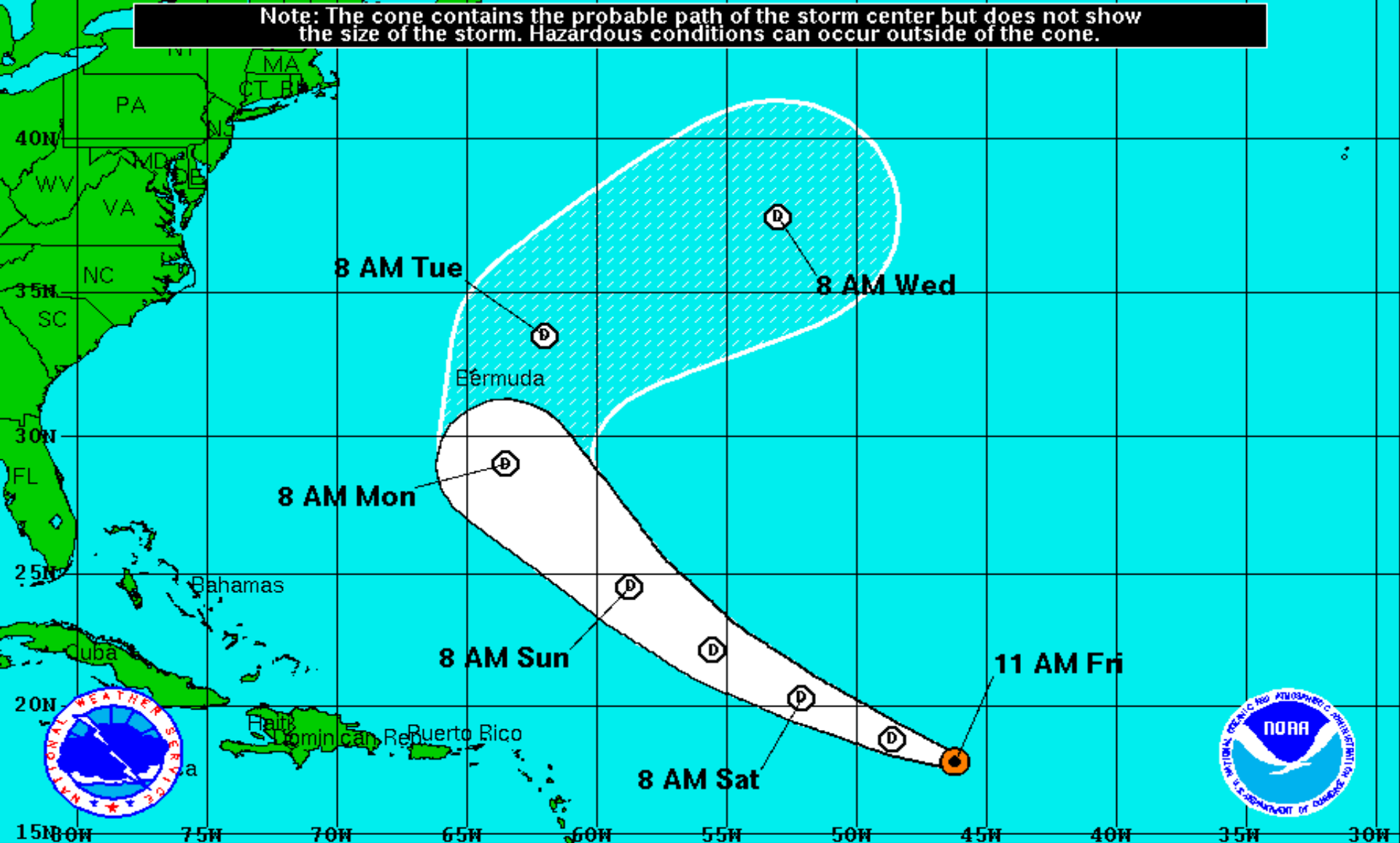
Minimum Pressure 1009 mb (29.79 inches)

Blue Marble basemap imagery courtesy NASA

Satellite 8:49 PM UTC  
4:49 PM EDT



Note: The cone contains the probable path of the storm center but does not show the size of the storm. Hazardous conditions can occur outside of the cone.



## Post-Tropical Cyclone Joyce

Friday August 24, 2012

11 AM EDT Advisory 9

NWS National Hurricane Center

## Current Information:

Center Location 17.8 N 46.2 W

Max Sustained Wind 35 mph

Movement WNW at 16 mph

## Forecast Positions:

● Tropical Cyclone ○ Post-Tropical

Sustained Winds: D < 39 mph

S 39-73 mph H 74-110 mph M > 110mph

## Potential Track Area:

Day 1-3 Day 4-5

## Watches:

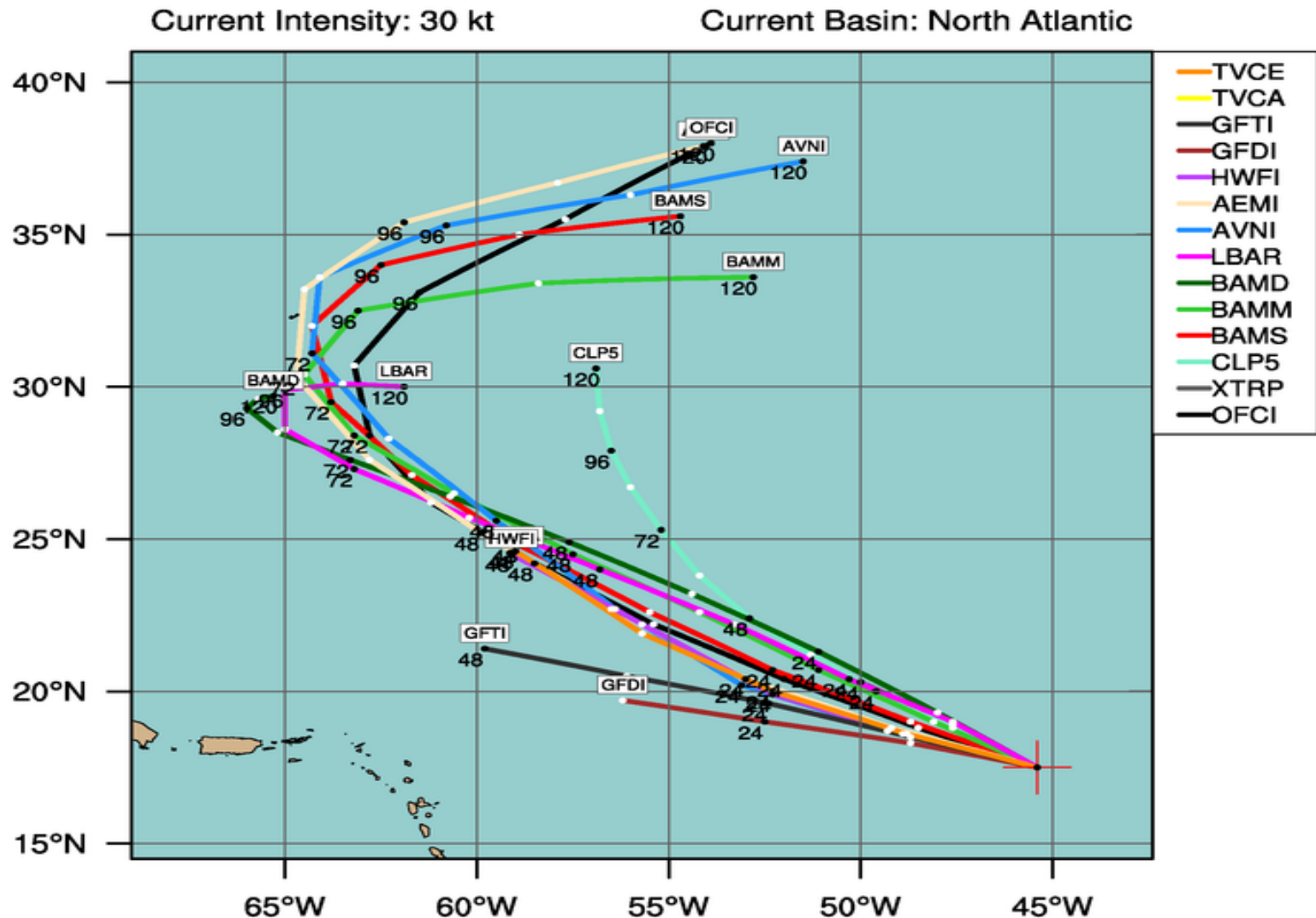
Hurricane Trop.Storm

## Warnings:

Hurricane Trop.Storm

# TROPICAL DEPRESSION JOYCE (AL10)

Early-cycle track guidance initialized at 1200 UTC, 24 August 2012



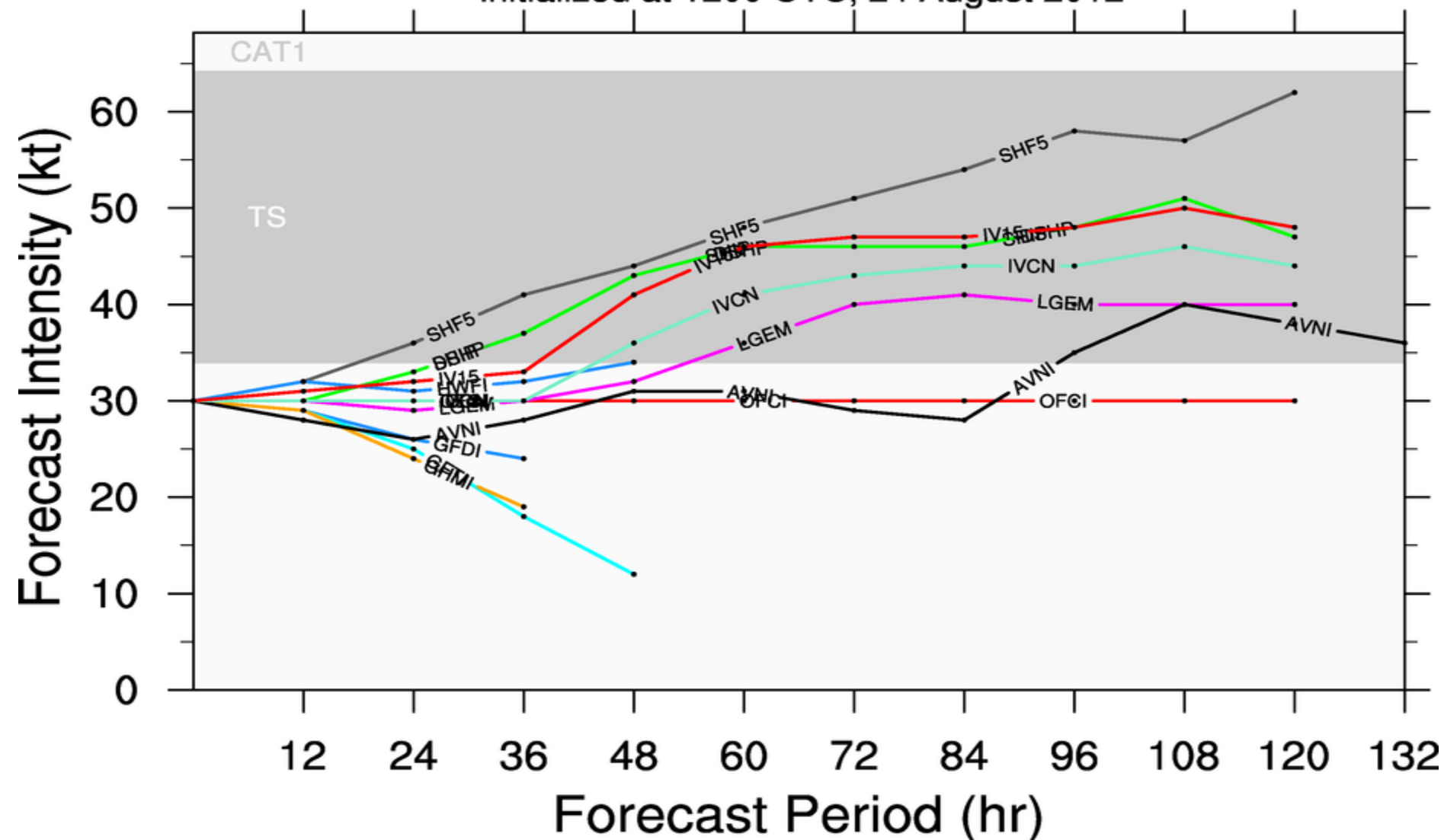
By using this plot, the user agrees to the UCAR Terms of Use  
which can be accessed at: <http://www2.ucar.edu/terms-of-use>

Plot generated at 1352 UTC 24 August 2012

# TROPICAL DEPRESSION JOYCE (AL10)

## Early-cycle intensity guidance

initialized at 1200 UTC, 24 August 2012



By using this plot, the user agrees to the UCAR Terms of Use  
which can be accessed at: <http://www2.ucar.edu/terms-of-use>

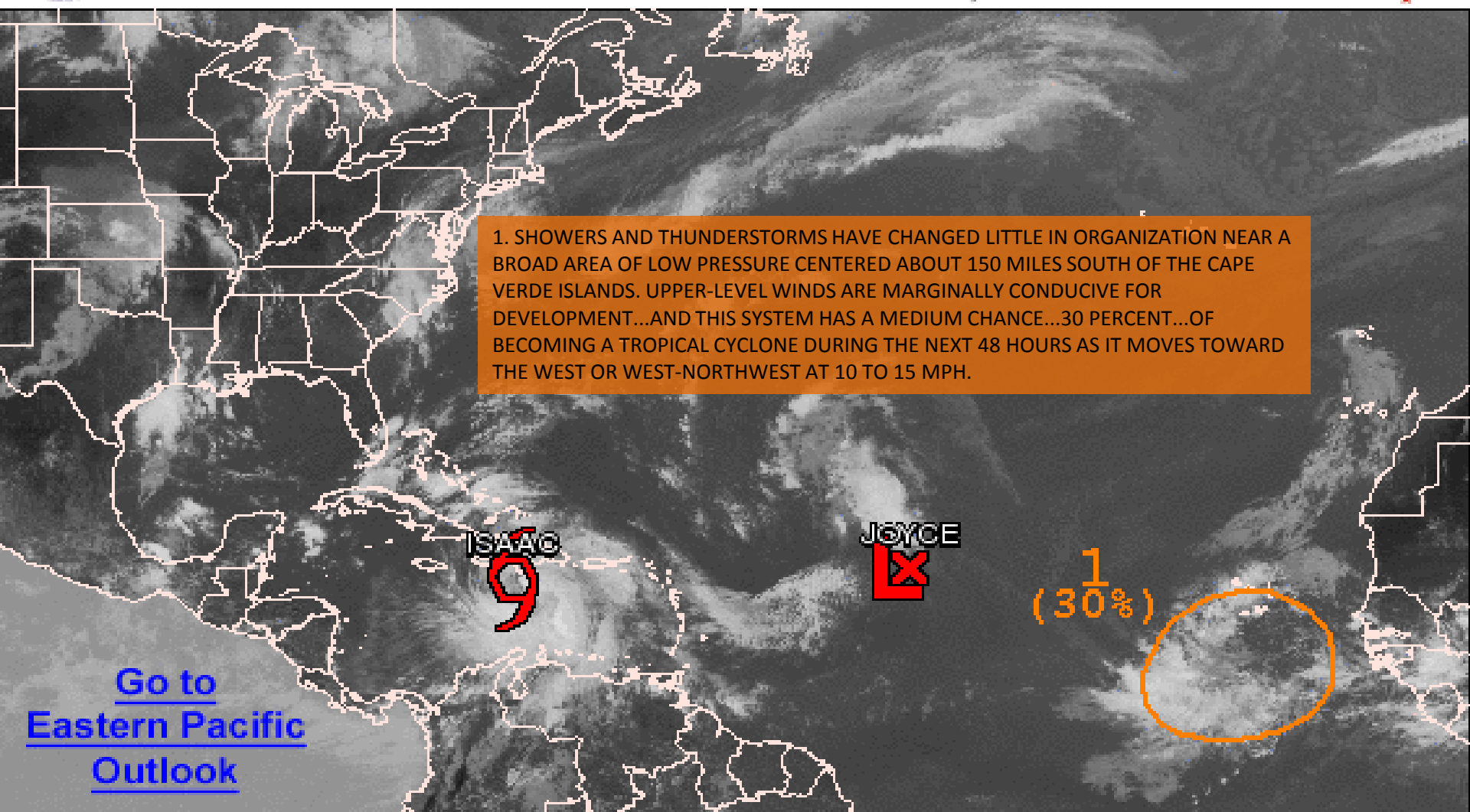
Plot generated at 1352 UTC 24 August 2012





# Graphical Tropical Weather Outlook

National Hurricane Center Miami, Florida



200 PM EDT FRI AUG 24 2012

Satellite Image: 0122 PM EDT

Outlined areas denote current position of systems discussed in the Tropical Weather Outlook. Color indicates probability of tropical cyclone formation within 48 hours.



Low <30%



Medium 30-50%



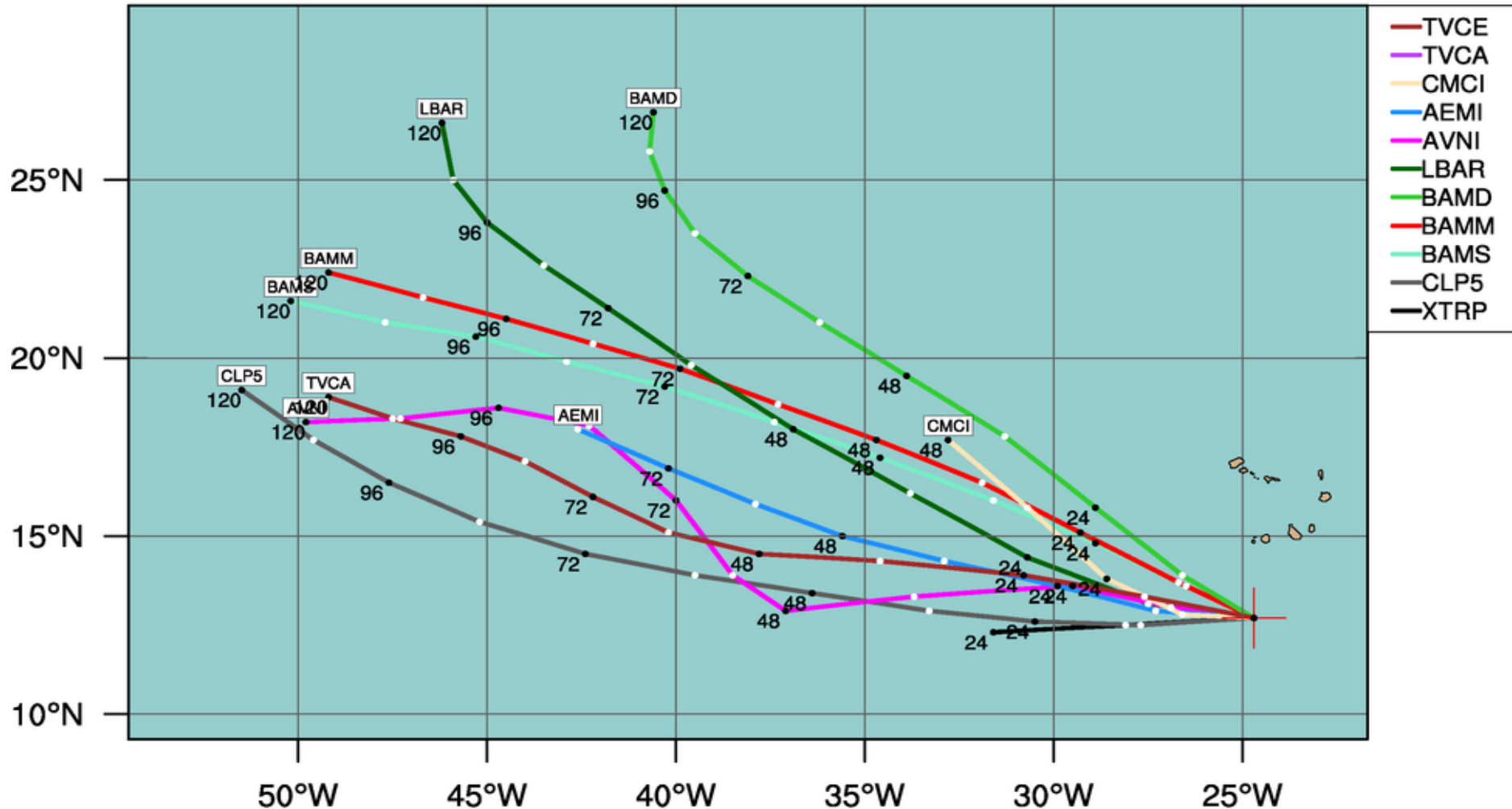
High >50%

# DISTURBANCE INVEST (AL97)

Early-cycle track guidance initialized at 1800 UTC, 24 August 2012

Current Intensity: 25 kt

Current Basin: North Atlantic



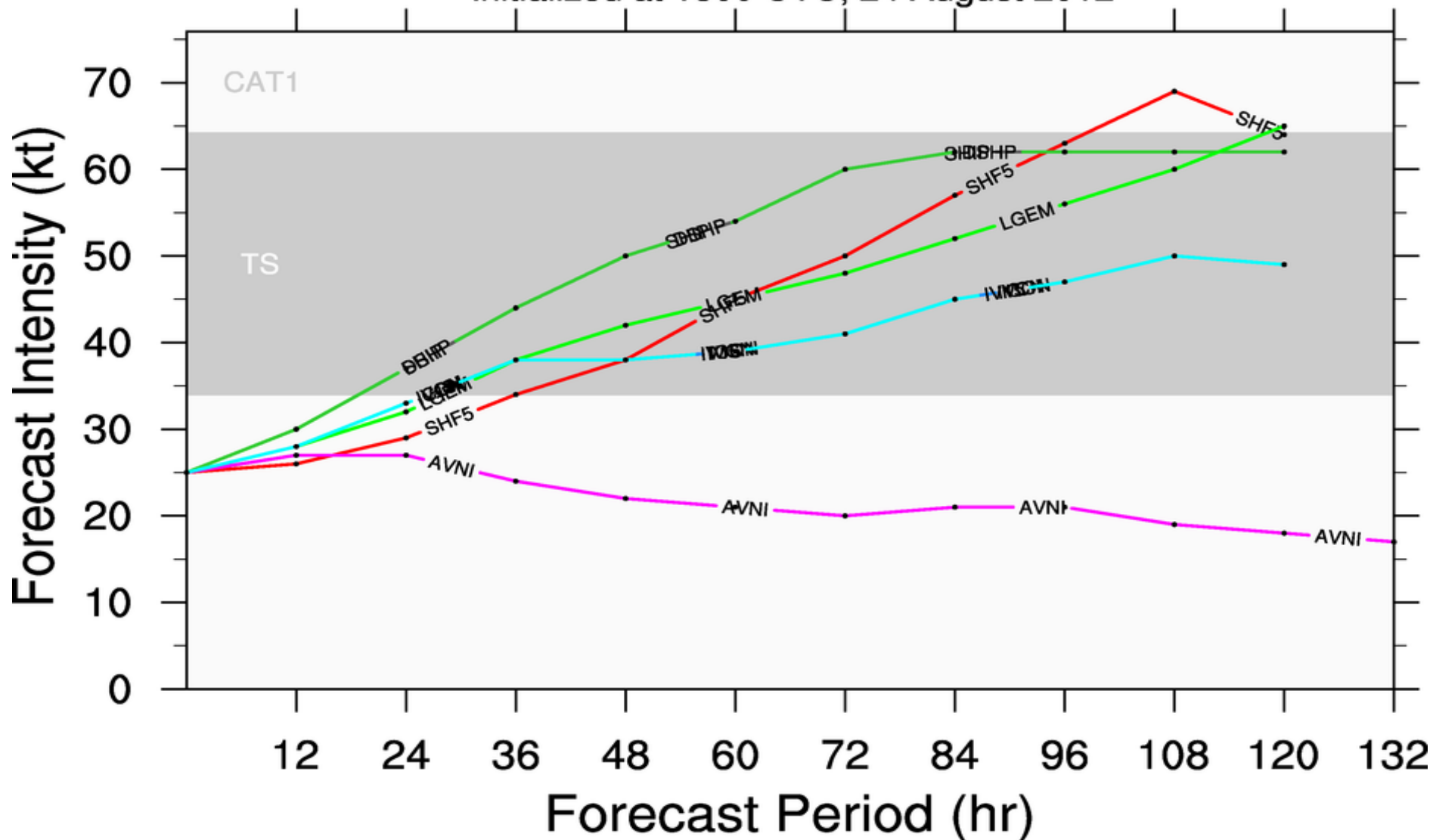
By using this plot, the user agrees to the UCAR Terms of Use  
which can be accessed at: <http://www2.ucar.edu/terms-of-use>

Plot generated at 1952 UTC 24 August 2012

# DISTURBANCE INVEST (AL97)

## Early-cycle intensity guidance

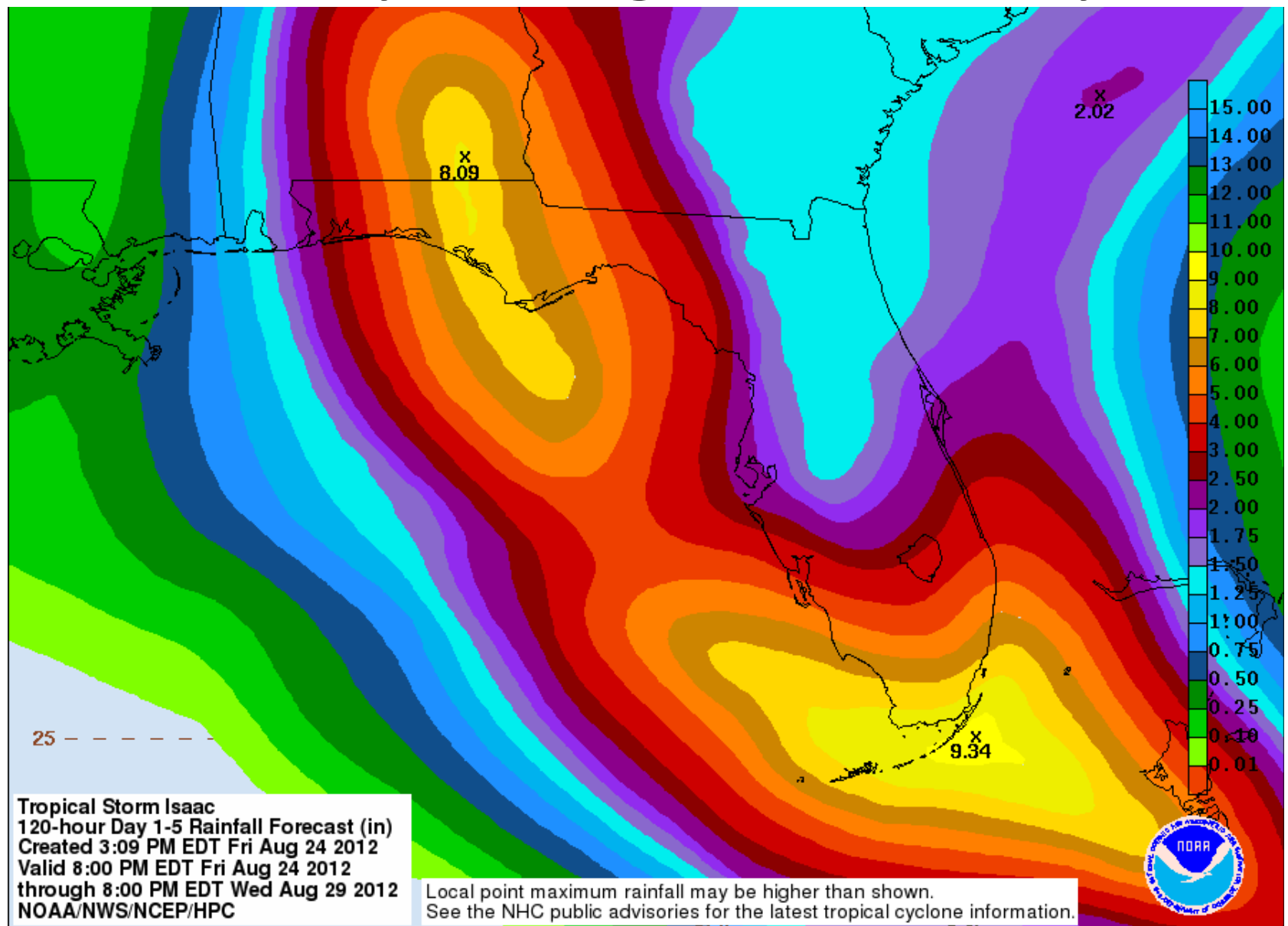
initialized at 1800 UTC, 24 August 2012



By using this plot, the user agrees to the UCAR Terms of Use  
which can be accessed at: <http://www2.ucar.edu/terms-of-use>










Plot generated at 1952 UTC 24 August 2012

# Forecast Rainfall Accumulations (Friday Through Wednesday)





# Experimental Chance of Exceedance

Chance of Exceedance		
30%	Level	70%
	Action	
	Minor Flood	
	Moderate Flood	
	Major Flood	
 = less than 30% chance of reaching Action level		

