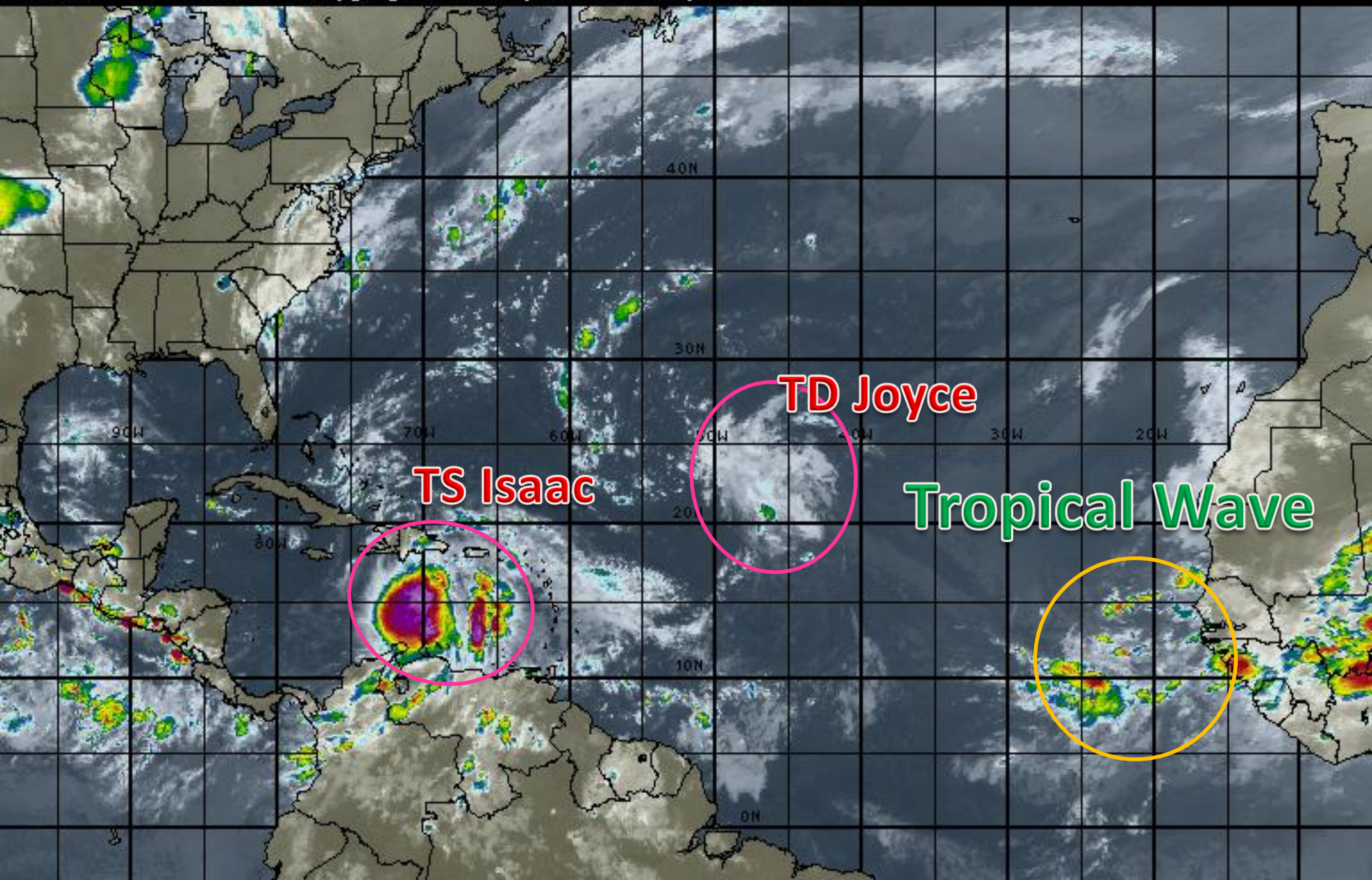


Atlantic Basin Satellite Image

06:00 24-AUG-2012 GMT ©Copyright WSI Corporation <http://www.wsi.com>



Tropical Storm Isaac

5 AM EDT Fri Aug 24 2012

Position 16.1°N 70.0°W

Maximum Winds 45 mph

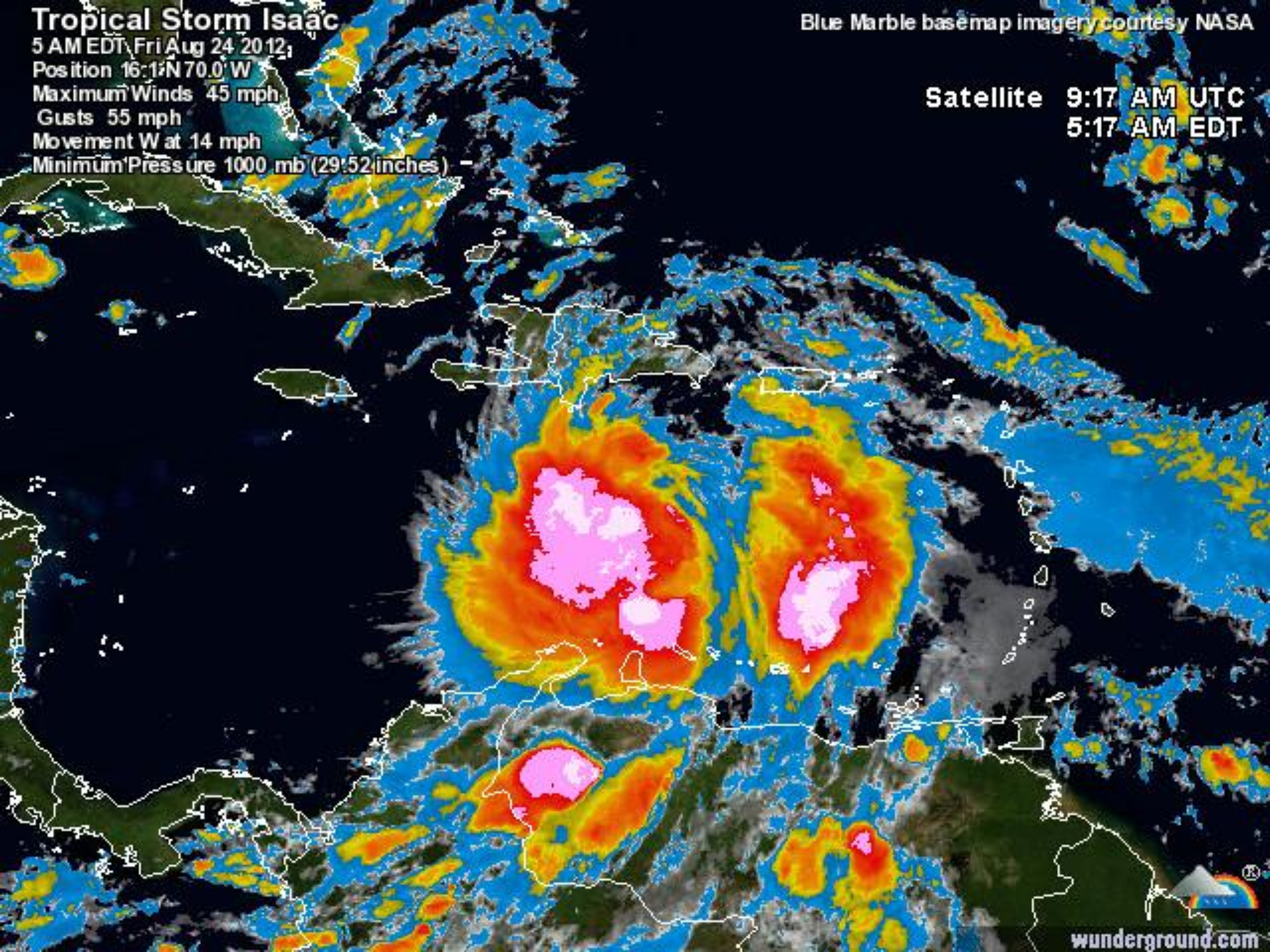
Gusts 55 mph

Movement W at 14 mph

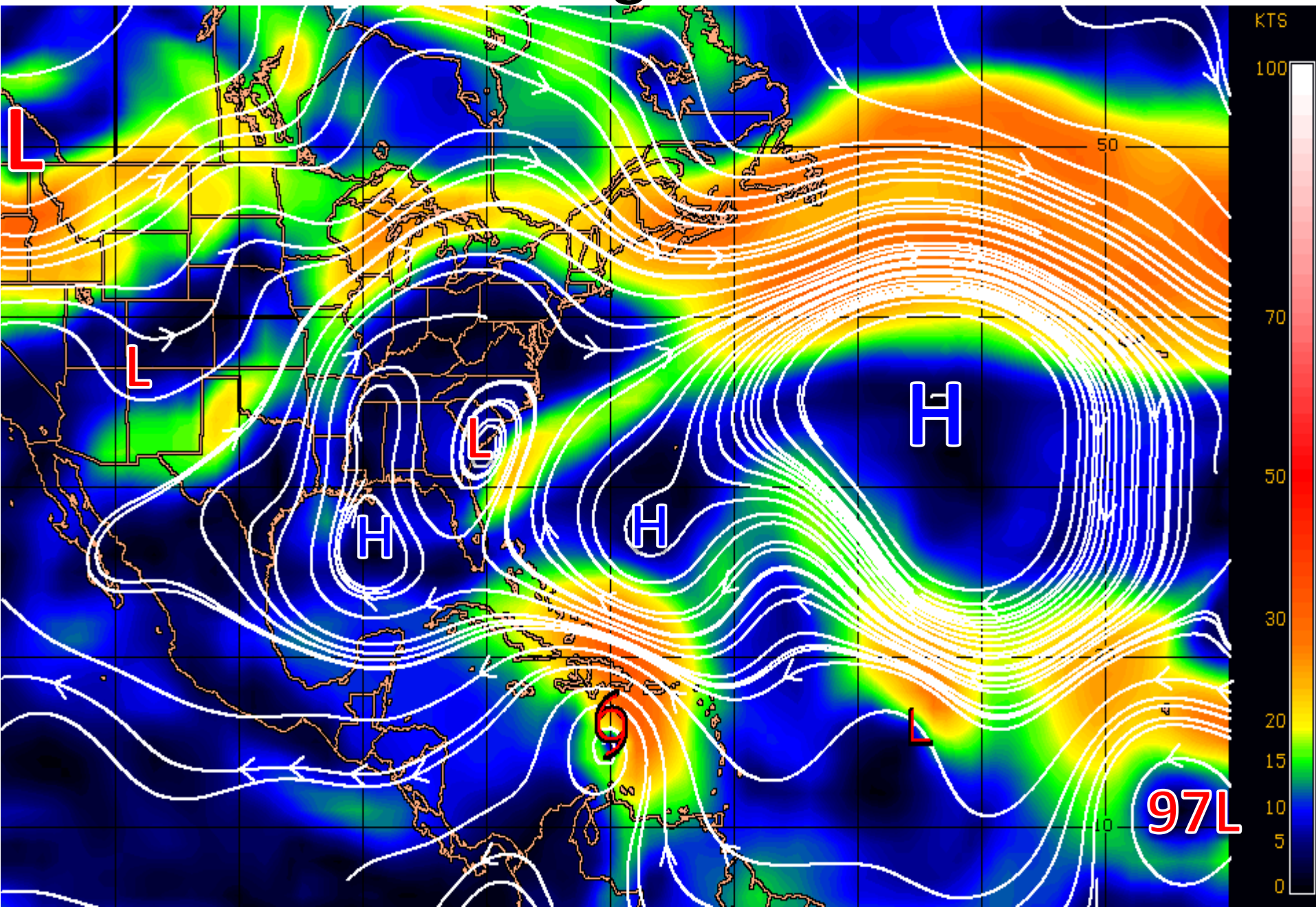
Minimum Pressure 1000 mb (29.52 inches)

Blue Marble basemap imagery courtesy NASA

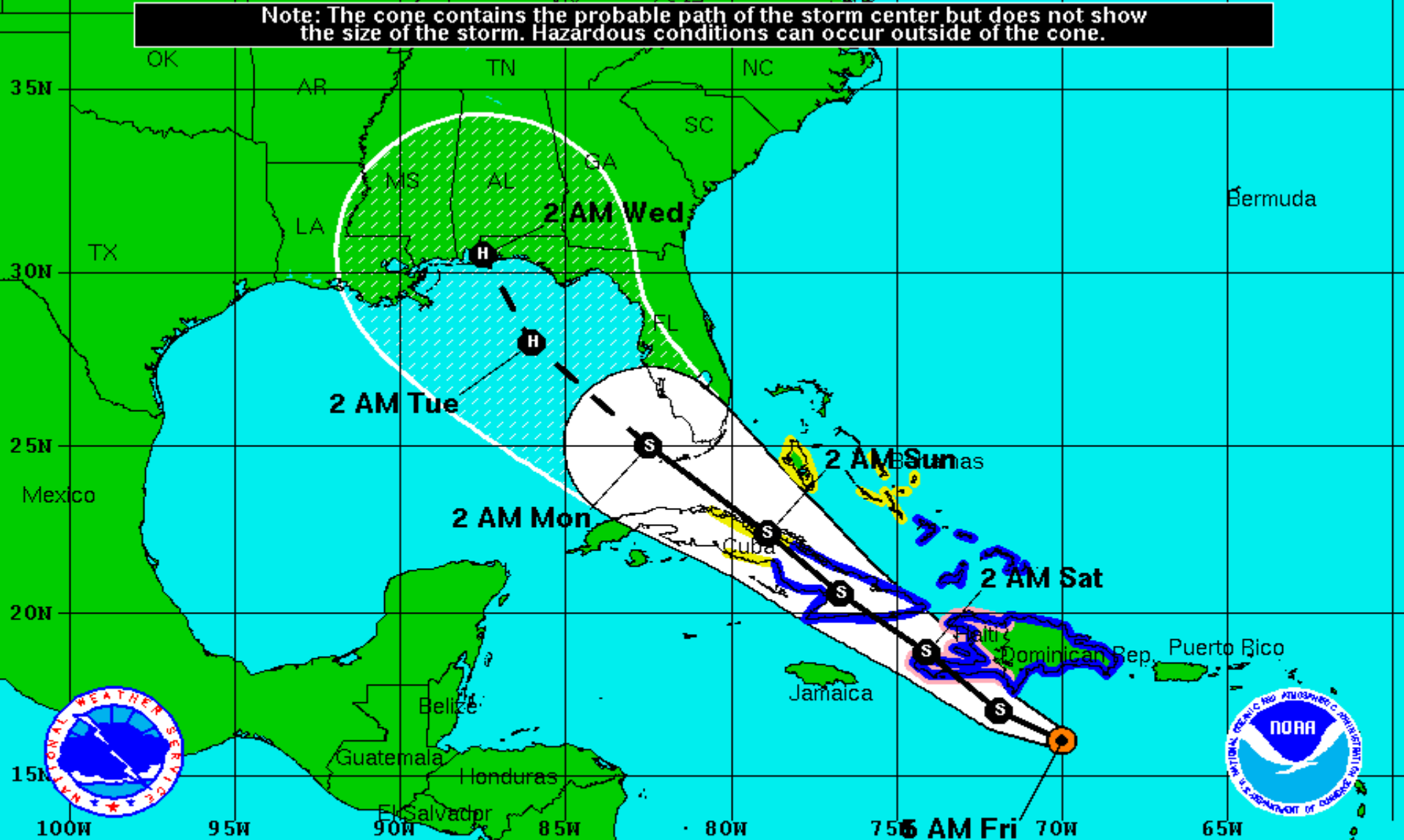
Satellite 9:17 AM UTC
5:17 AM EDT




Steering Currents





Note: The cone contains the probable path of the storm center but does not show the size of the storm. Hazardous conditions can occur outside of the cone.



Tropical Storm Isaac
 Friday August 24, 2012
 5 AM EDT Advisory 13
 NWS National Hurricane Center

Current Information: 
 Center Location 16.1 N 70.0 W
 Max Sustained Wind 45 mph
 Movement W at 15 mph

Forecast Positions:
 Tropical Cyclone  Post-Tropical
 Sustained Winds: D < 39 mph
 S 39-73 mph H 74-110 mph M > 110mph

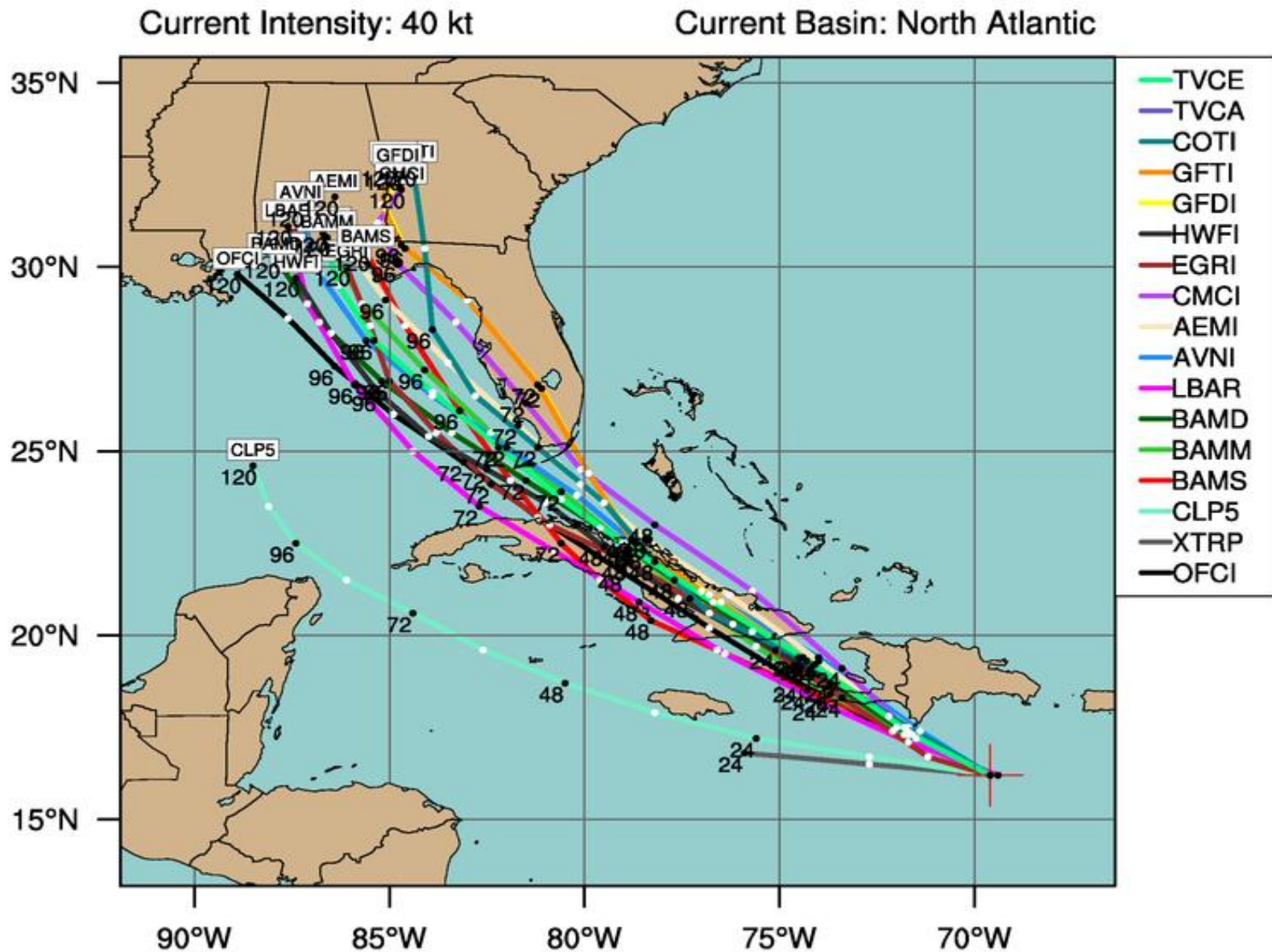
Potential Track Area:
 Day 1-3  Day 4-5

Watches:
 Hurricane  Trop.Storm

Warnings:
 Hurricane  Trop.Storm

TROPICAL STORM ISAAC (AL09)

Early-cycle track guidance initialized at 0600 UTC, 24 August 2012



Tropical Storm Isaac

5 AM EDT Fri Aug 24 2012

Models: Points 12 hours apart

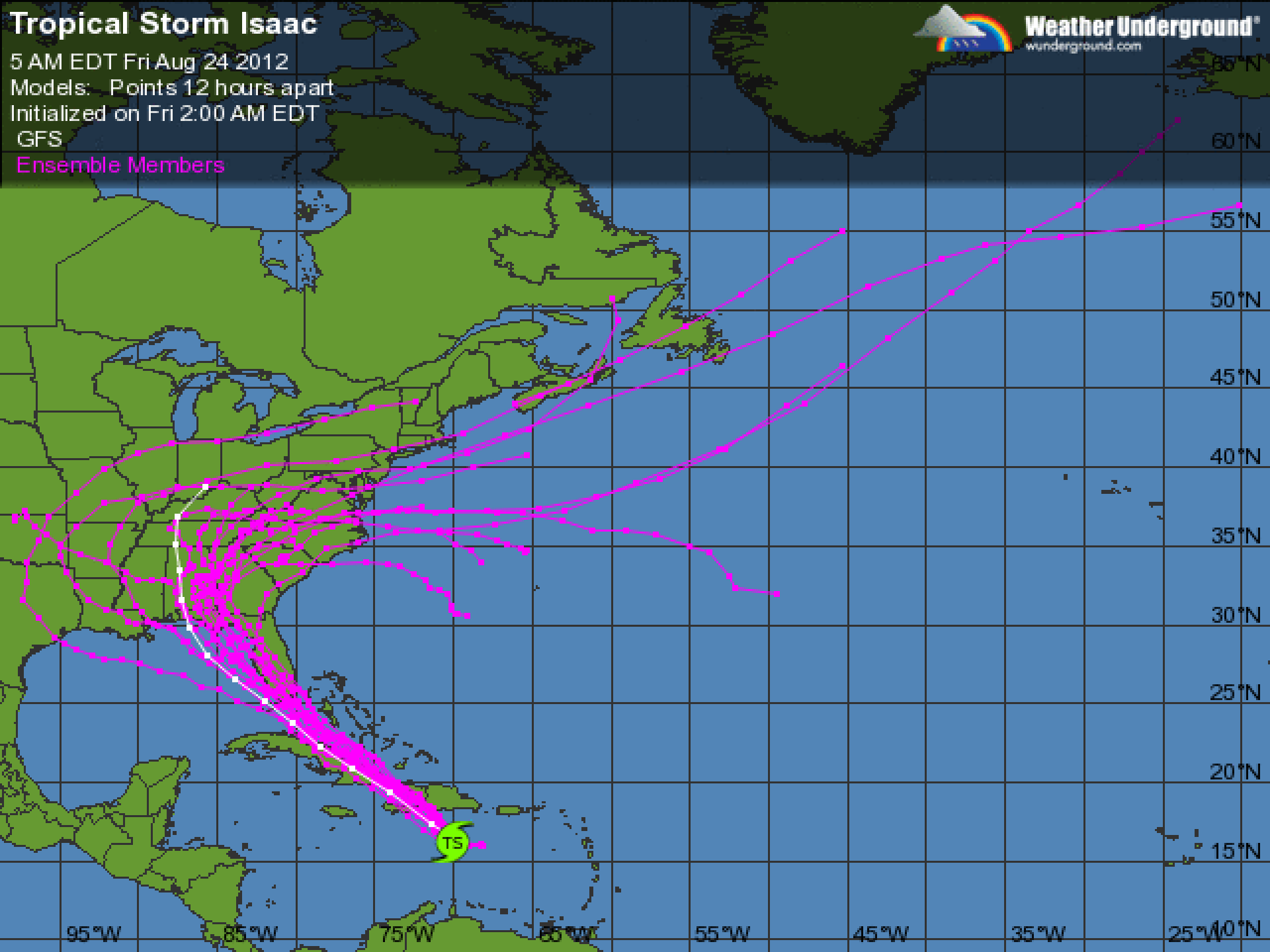
Initialized on Fri 2:00 AM EDT

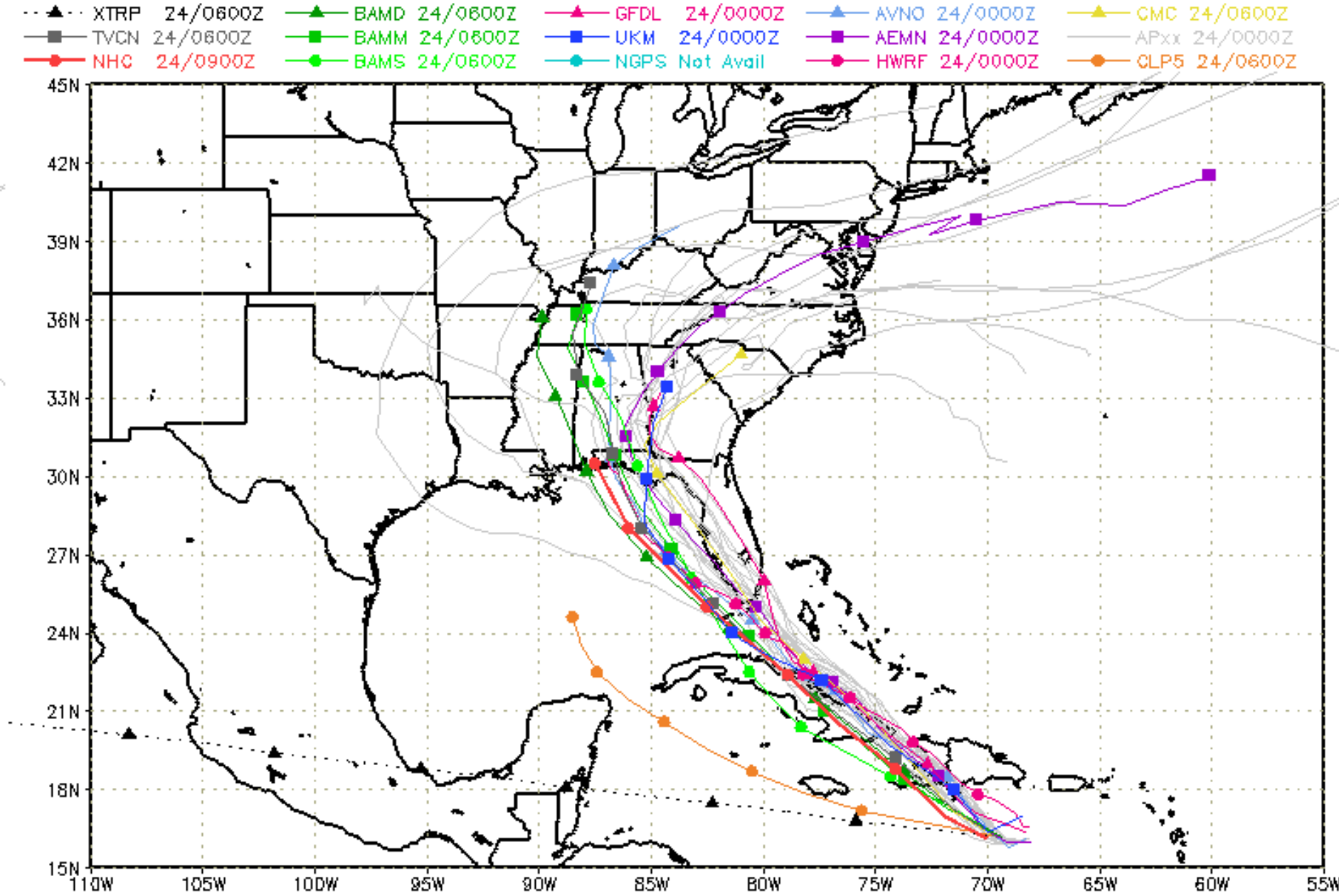
GFS

Ensemble Members



Weather Underground®
wunderground.com





storm_09

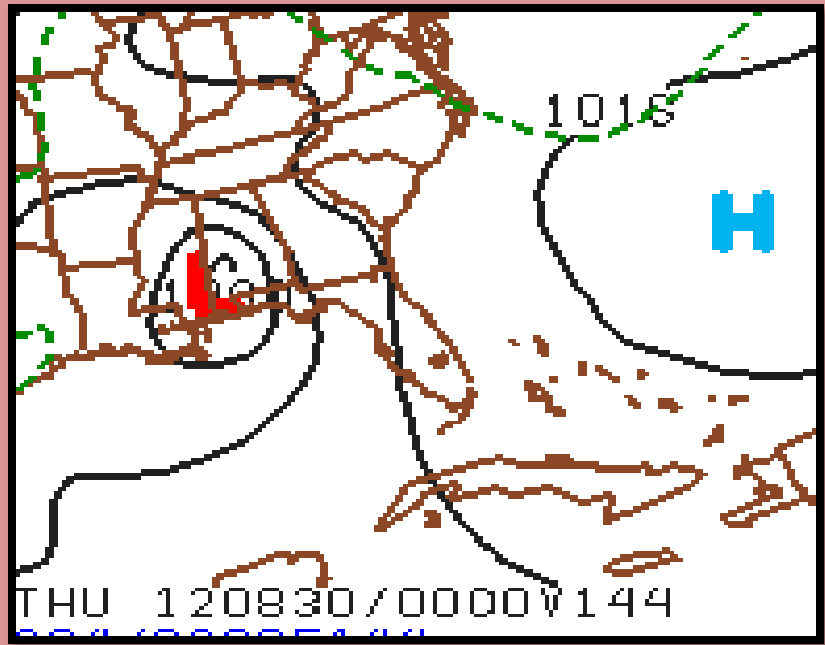
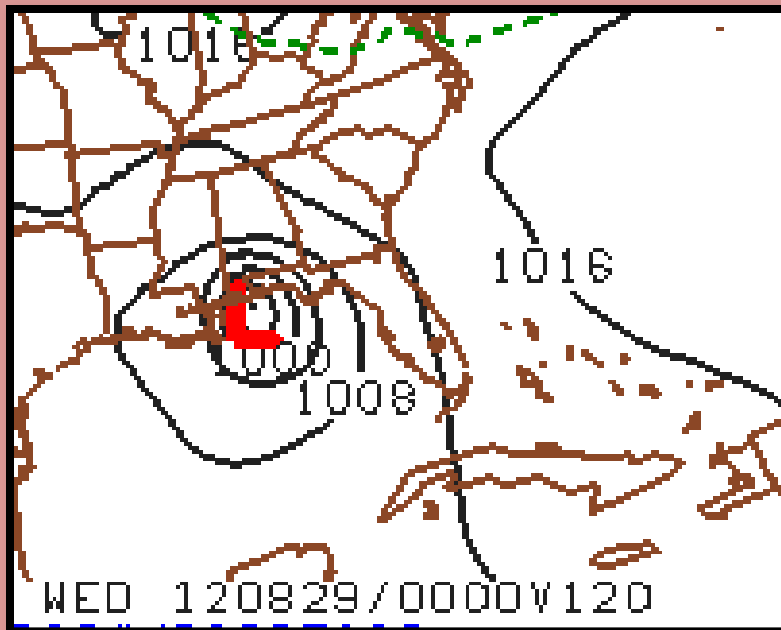
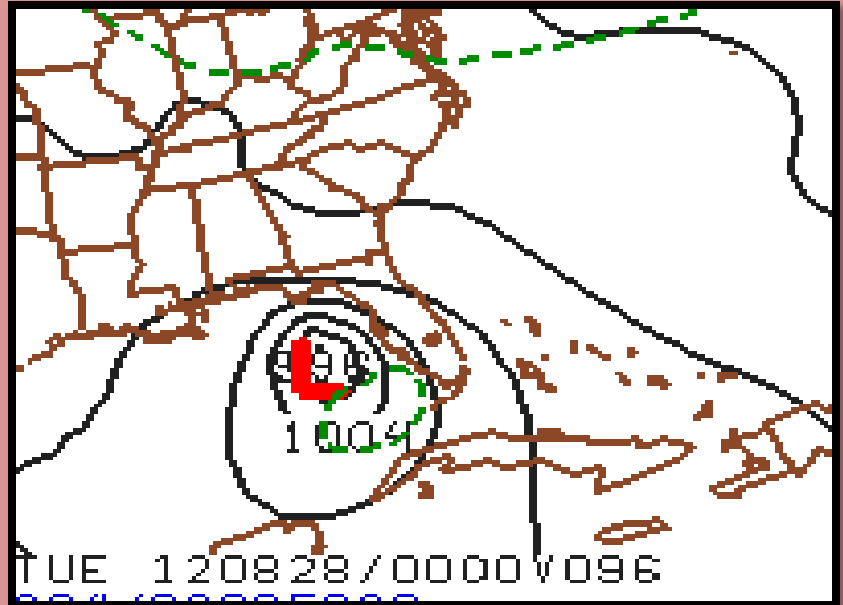
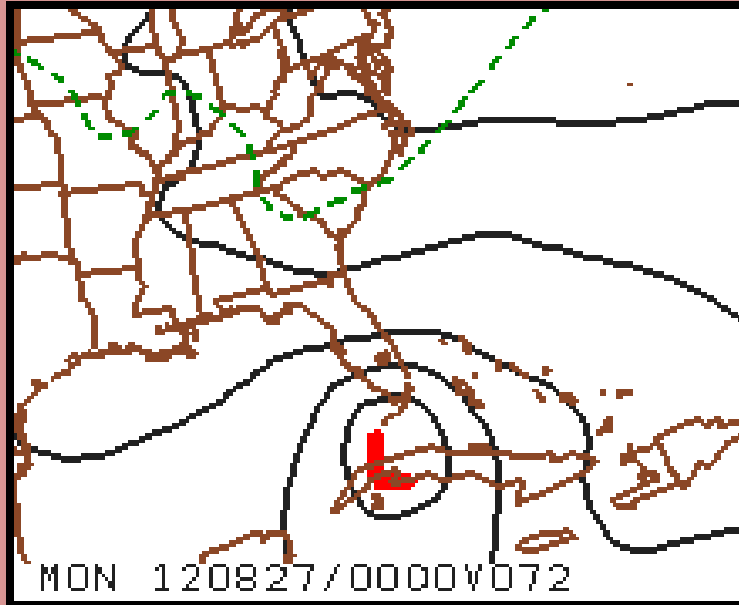
sfwmd.gov

weather@sfwmd.gov
24-Aug 05:51 EDT

NHC Advisories and County Emergency Management Statements supersede this product. This graphic should complement, not replace, NHC discussions. If anything on this graphic causes confusion, ignore the entire product. For full info, see <http://my.sfwmd.gov/sfwmd/common/images/weather/plots.html>



European Model (ECMWF)



Tropical Storm Isaac # 13

August 24, 2012

5 AM EDT Friday

Current Location 16.1 N 70.0 W

Max Sustained Wind 45 mph (Cat 0)

Current Movement 15 mph

○ Current Location

□ Forecast Positions

△ Potential Track Area



Hurricane Warning

Hurricane Watch

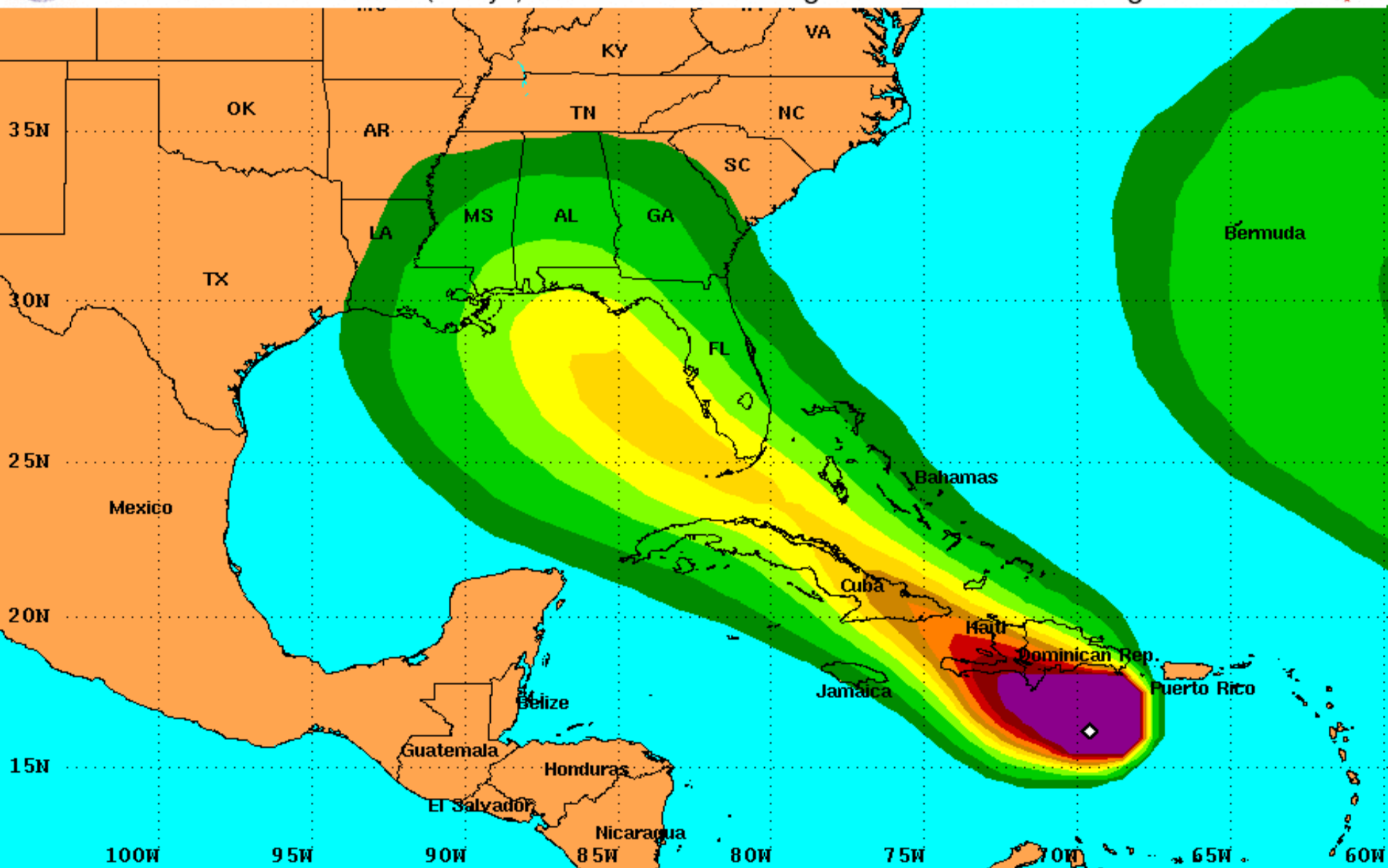
Trop. Storm Warning

Trop. Storm Watch



Tropical Storm Force Wind Speed Probabilities

For the 120 hours (5 days) from 2 AM EDT Fri Aug 24 to 2 AM EDT Wed Aug 29



Probability of tropical storm force surface winds (1-minute average ≥ 39 mph) from all tropical cyclones

◇ indicates TROPICAL STORM ISAAC center location at 2 AM EDT Fri Aug 24 2012 (Forecast/Advisory #13)



Tropical Storm Isaac # 13
August 24, 2012
5 AM EDT Friday

Current Location 16.1 N 70.0 W
Max Sustained Wind 45 mph (Cat 0)
Current Movement 15 mph

- Current Location
- Forecast Positions
- △ Potential Track Area

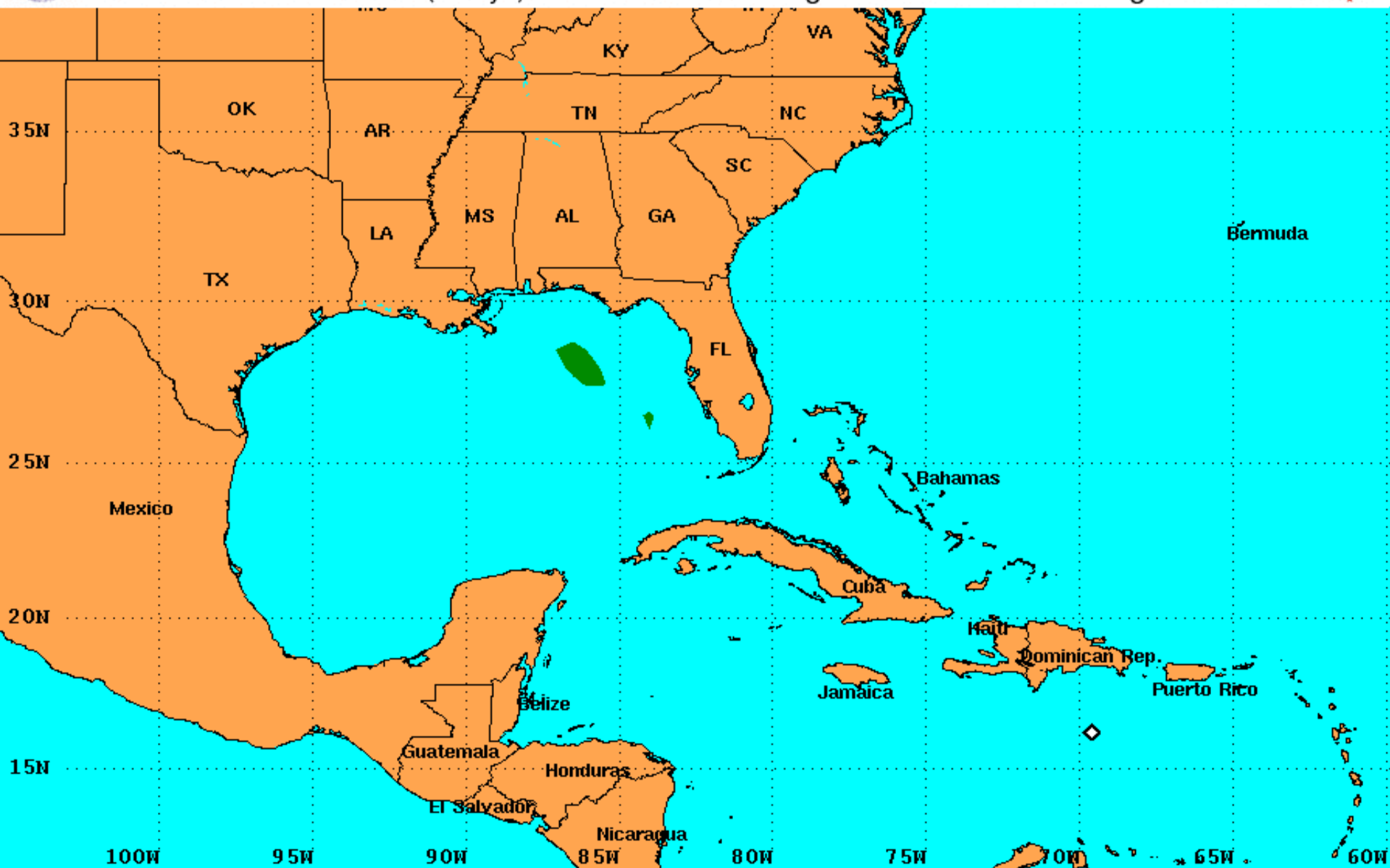
Program error.
50kt winds
expected in a
smaller area.





Hurricane Force Wind Speed Probabilities

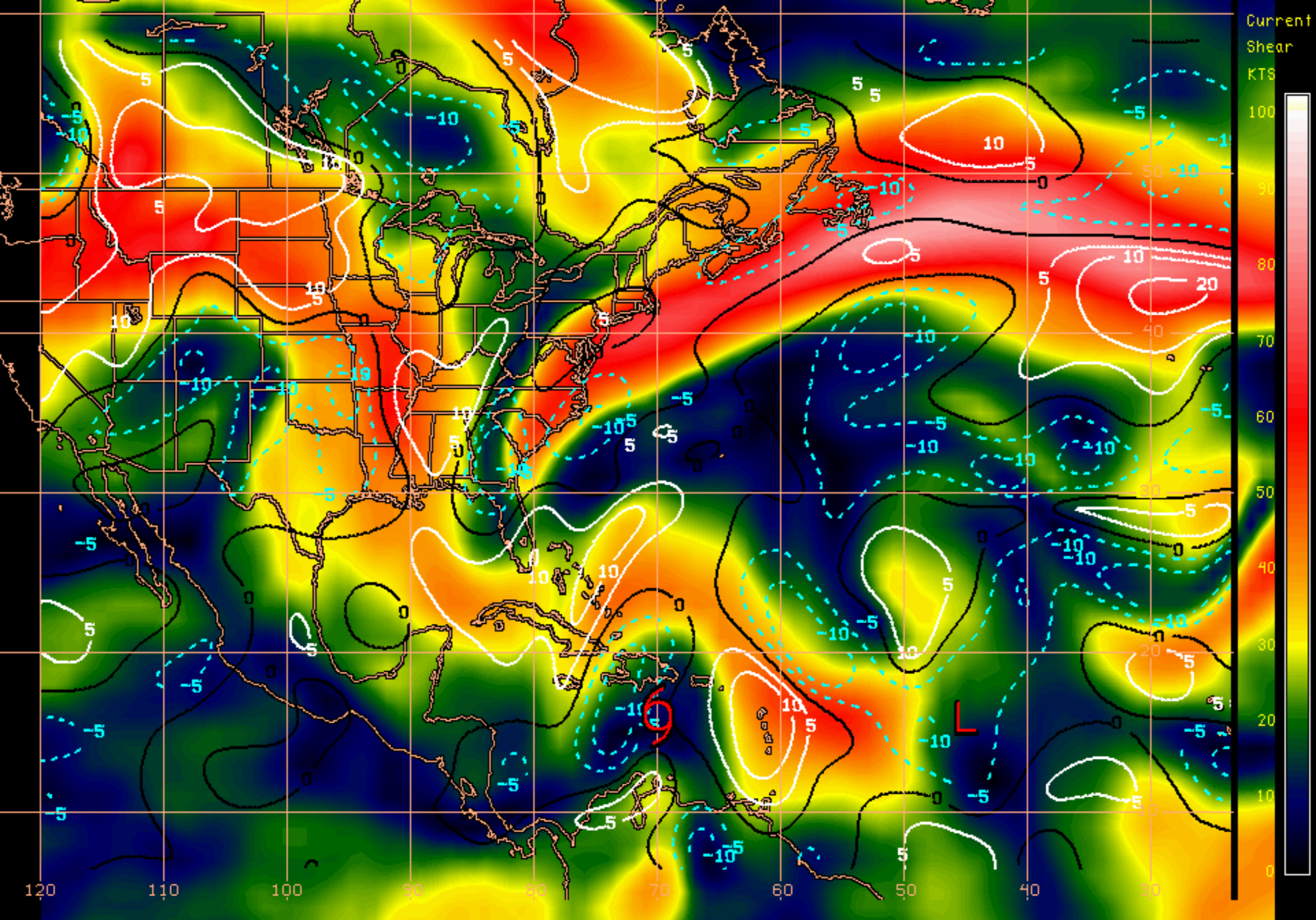
For the 120 hours (5 days) from 2 AM EDT Fri Aug 24 to 2 AM EDT Wed Aug 29



Probability of hurricane force surface winds (1-minute average ≥ 74 mph) from all tropical cyclones

◇ indicates TROPICAL STORM ISAAC center location at 2 AM EDT Fri Aug 24 2012 (Forecast/Advisory #13)



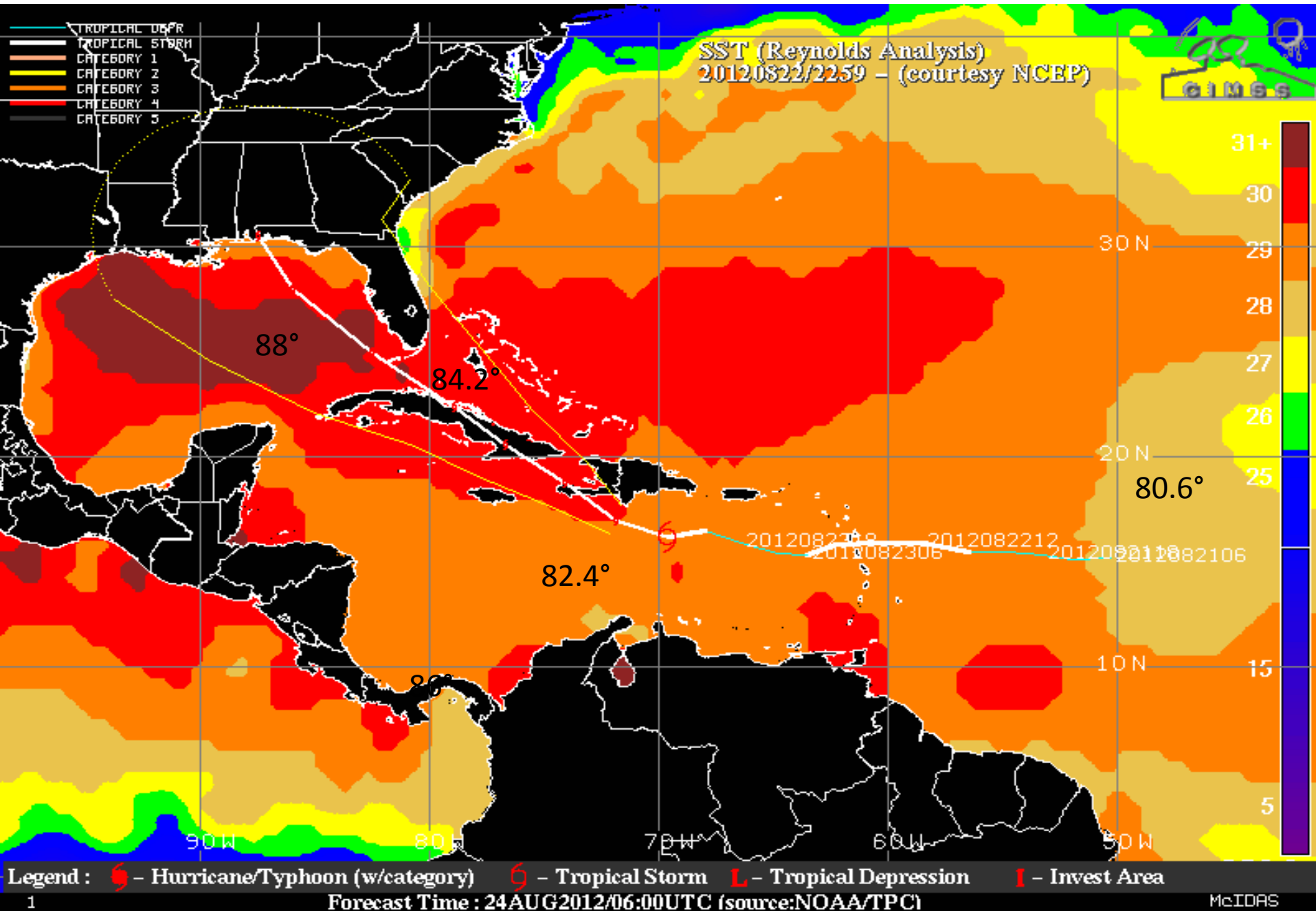


Current
Shear
KTS

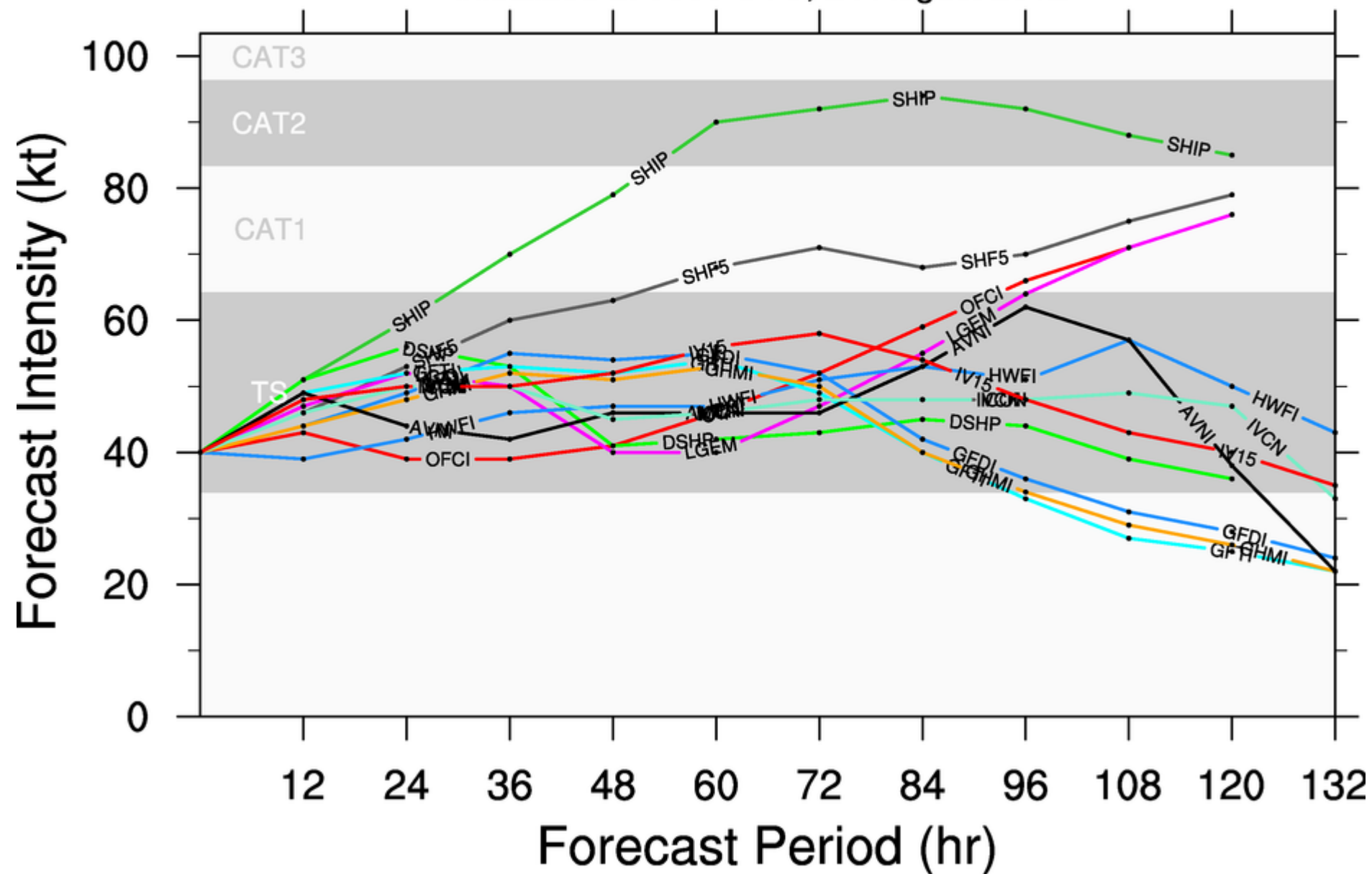
100
90
80
70
60
50
40
30
20
10
0

Shear Tendency (KTS) Over Past 24 Hours: Increasing — Decreasing ----

Sea Surface Temperatures Around Isaac



initialized at 0600 UTC, 24 August 2012





Intensity (Maximum Wind Speed) Probability Table
Tropical Storm Isaac Advisory Number 13
5:00 AM EDT Aug 24 2012



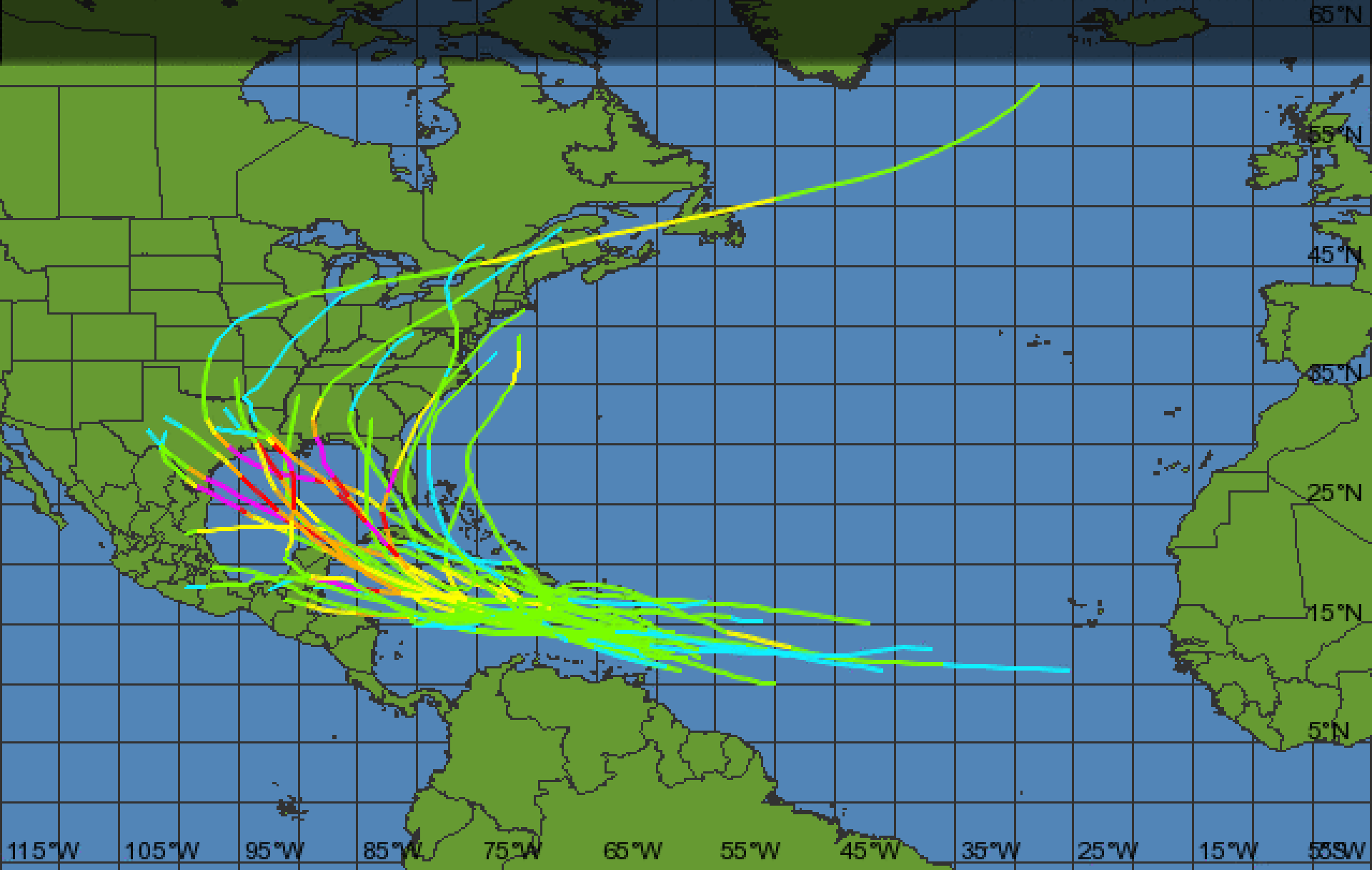
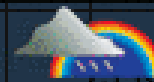
Wind Range (mph)	Forecast Time						
	12 hour for 2 PM Fri	24 hour for 2 AM Sat	36 hour for 2 PM Sat	48 hour for 2 AM Sun	72 hour for 2 AM Mon	96 hour for 2 AM Tue	120 hour for 2 AM Wed
Dissipated	<1%	2%	5%	11%	14%	17%	23%
Tropical Depression (<39)	5%	21%	22%	29%	16%	13%	6%
Tropical Storm (39-73)	89%	71%	66%	51%	53%	42%	41%
Hurricane (all categories)	7%	7%	7%	9%	17%	29%	30%
-- Category 1 (74-95)	6%	6%	6%	8%	14%	22%	24%
-- Category 2 (96-110)	1%	1%	1%	1%	2%	5%	6%
-- Category 3 (111-130)	<1%	<1%	<1%	<1%	1%	2%	1%
-- Category 4 (131-155)	<1%	<1%	<1%	<1%	<1%	<1%	<1%
-- Category 5 (>155)	<1%	<1%	<1%	<1%	<1%	<1%	<1%
Forecast Maximum Wind	60 mph	50 mph	50 mph	50 mph	65 mph	75 mph	85 mph

Tropical Storm Isaac

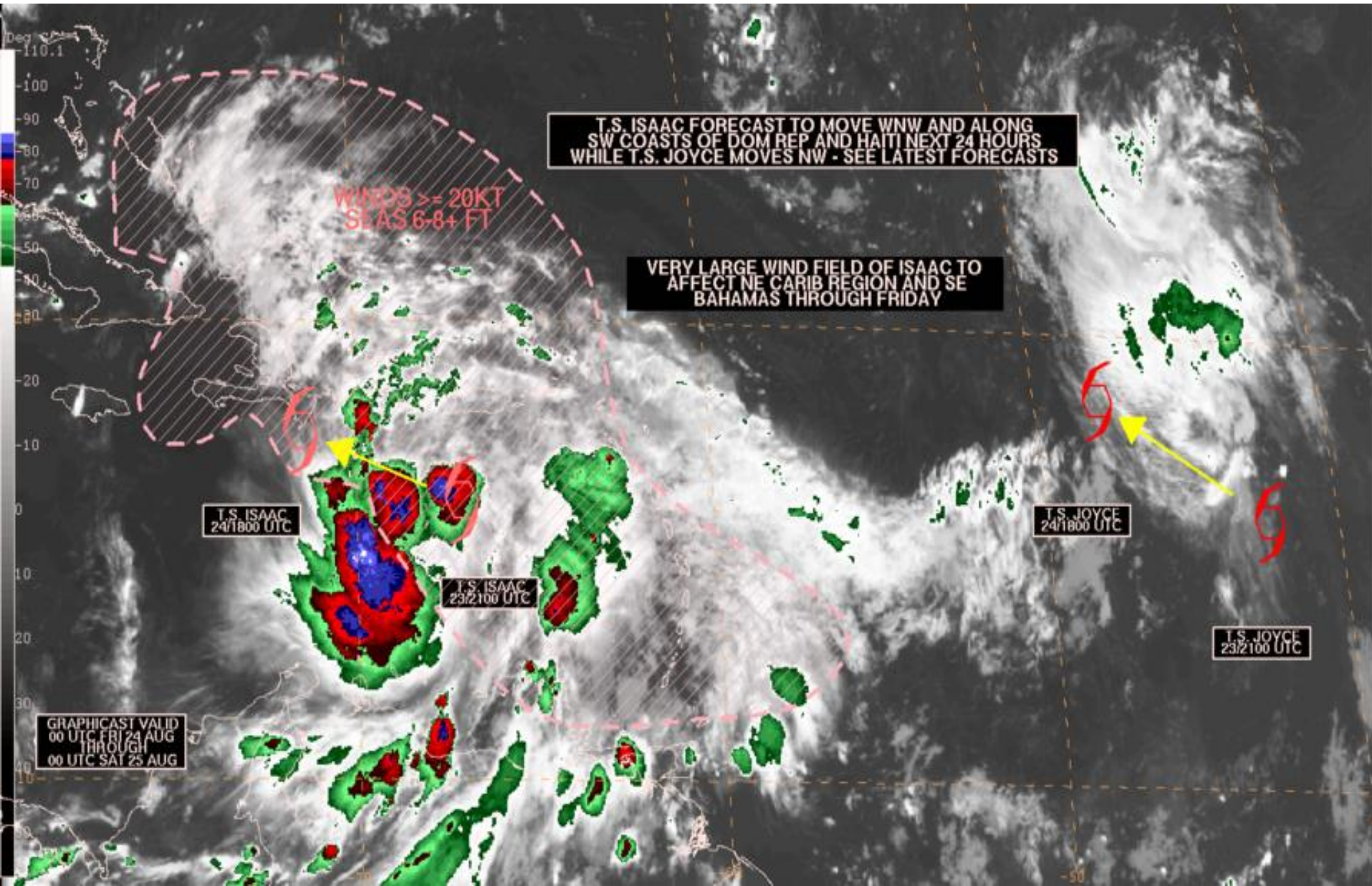
Tracks of all August
Tropical Storms
Within 2 degrees of Isaac
Between 1851 and 2011

Storm Category

Tropical Depression	Tropical Storm	Category 1	Category 2	Category 3	Category 4	Category 5
< 39 mph	39-73 mph	74-95 mph	96-110 mph	111-130 mph	131-155 mph	156+ mph



NHC short term graphical forecast



TD Joyce

5 AM EDT Fri Aug 24 2012

Position 16.9 N 45.0 W

Maximum Winds 35 mph

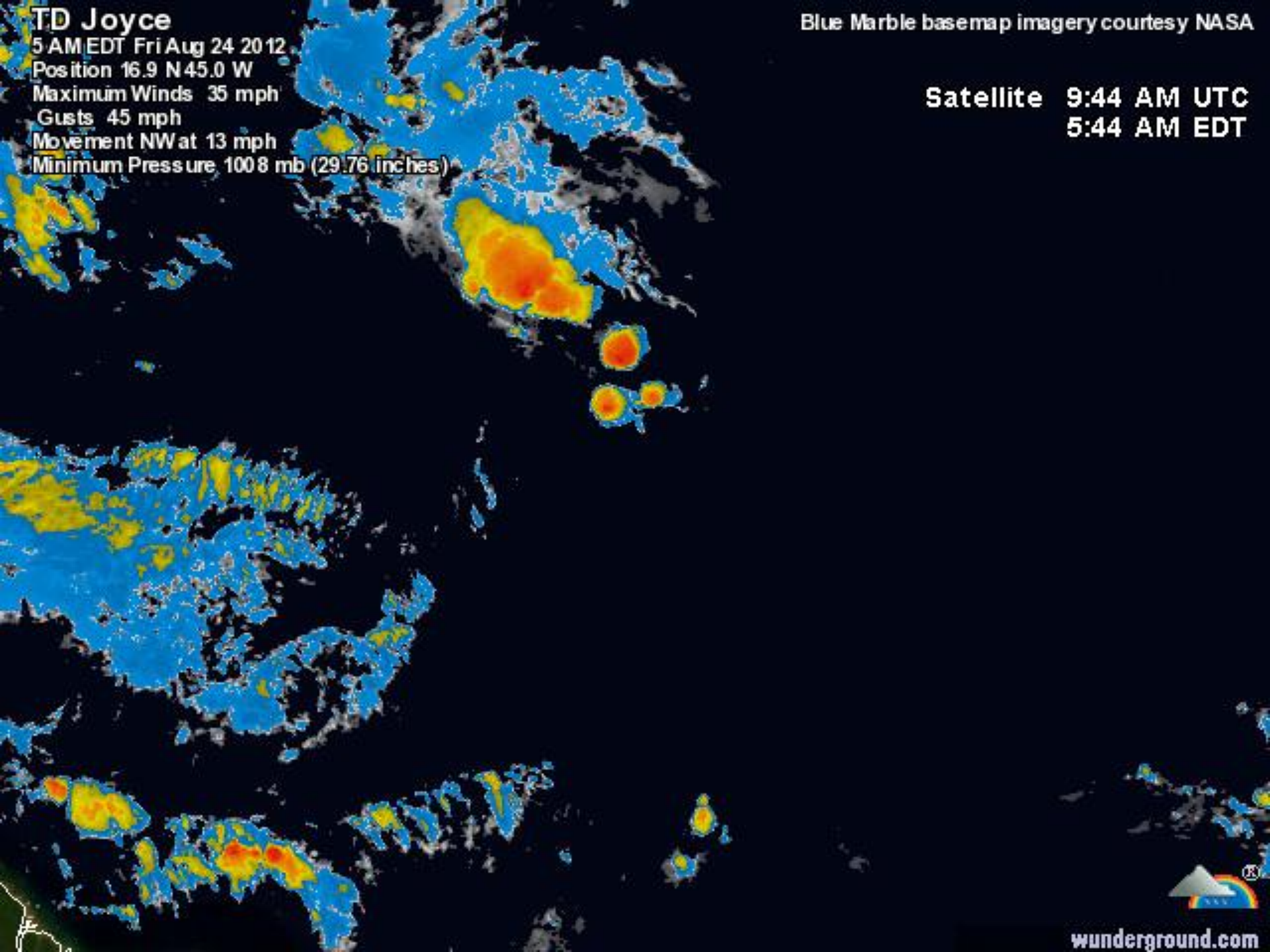
Gusts 45 mph

Movement NW at 13 mph

Minimum Pressure 1008 mb (29.76 inches)

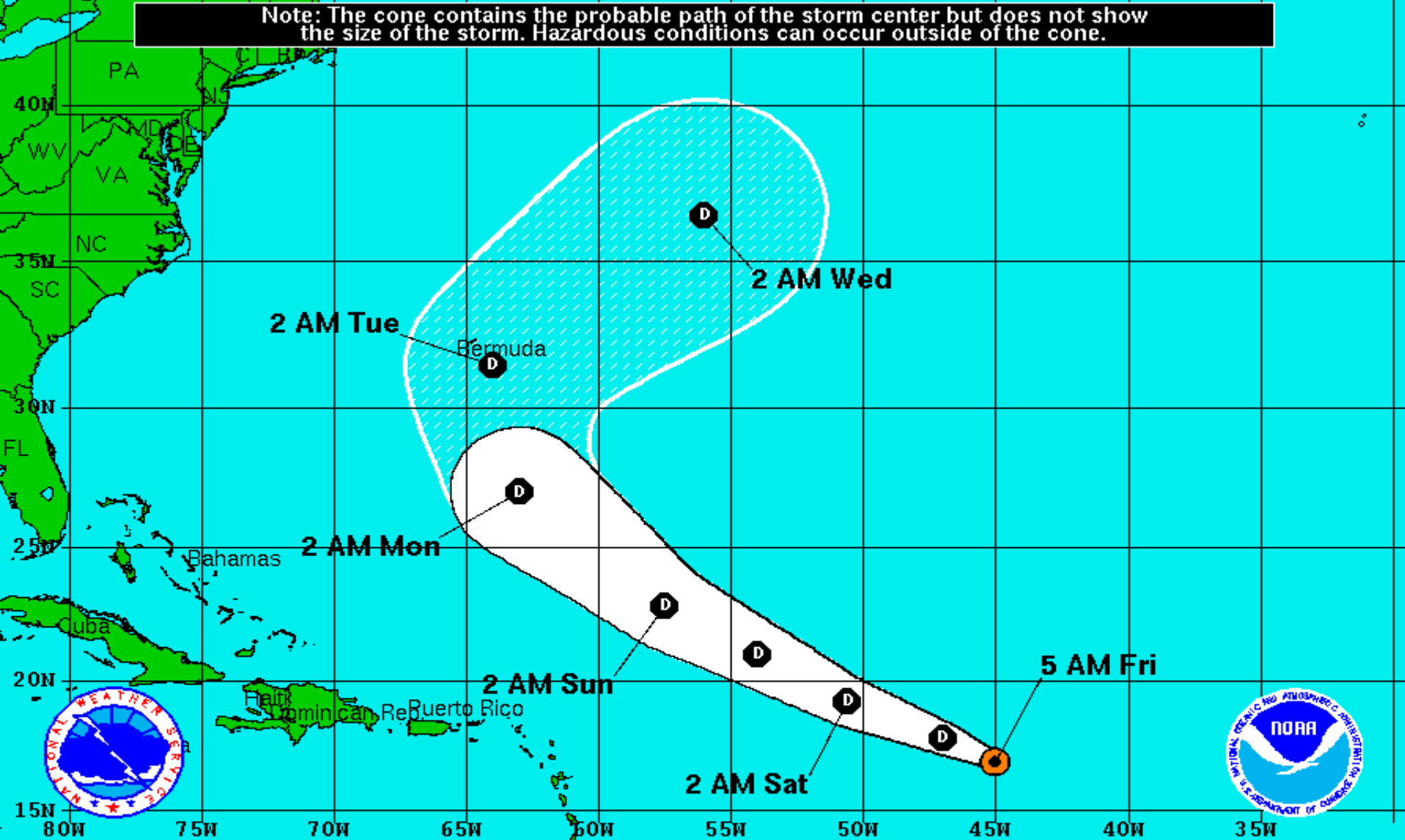
Blue Marble basemap imagery courtesy NASA

Satellite 9:44 AM UTC
5:44 AM EDT



wunderground.com

Note: The cone contains the probable path of the storm center but does not show the size of the storm. Hazardous conditions can occur outside of the cone.



Tropical Depression Joyce

Friday August 24, 2012

5 AM EDT Advisory 8

NWS National Hurricane Center

Current Information:

Center Location 16.9 N 45.0 W

Max Sustained Wind 35 mph

Movement NW at 14 mph

Forecast Positions:

● Tropical Cyclone ○ Post-Tropical

Sustained Winds: D < 39 mph

S 39-73 mph H 74-110 mph M > 110 mph

Potential Track Area:

Day 1-3 Day 4-5

Watches:

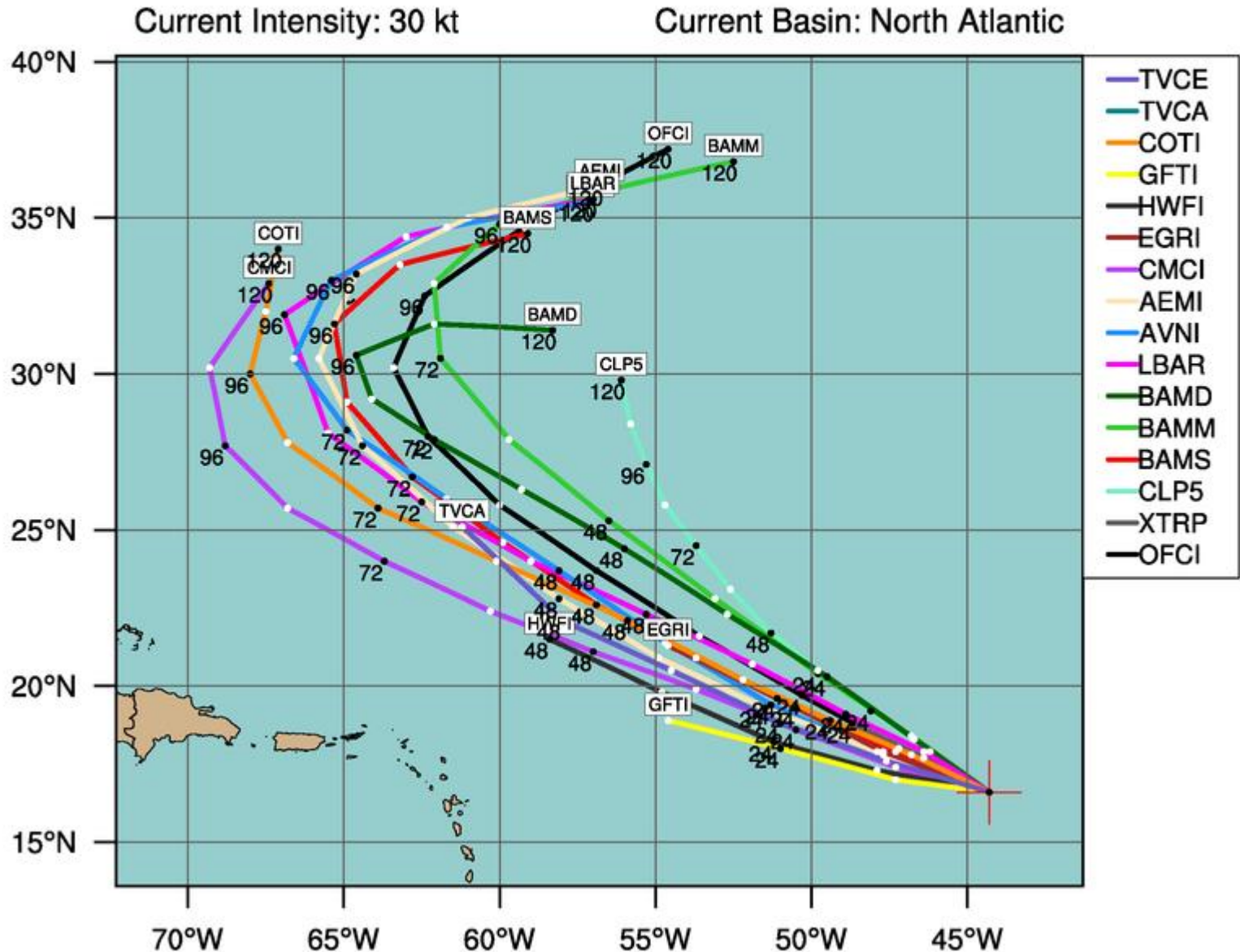
Hurricane Trop.Storm

Warnings:

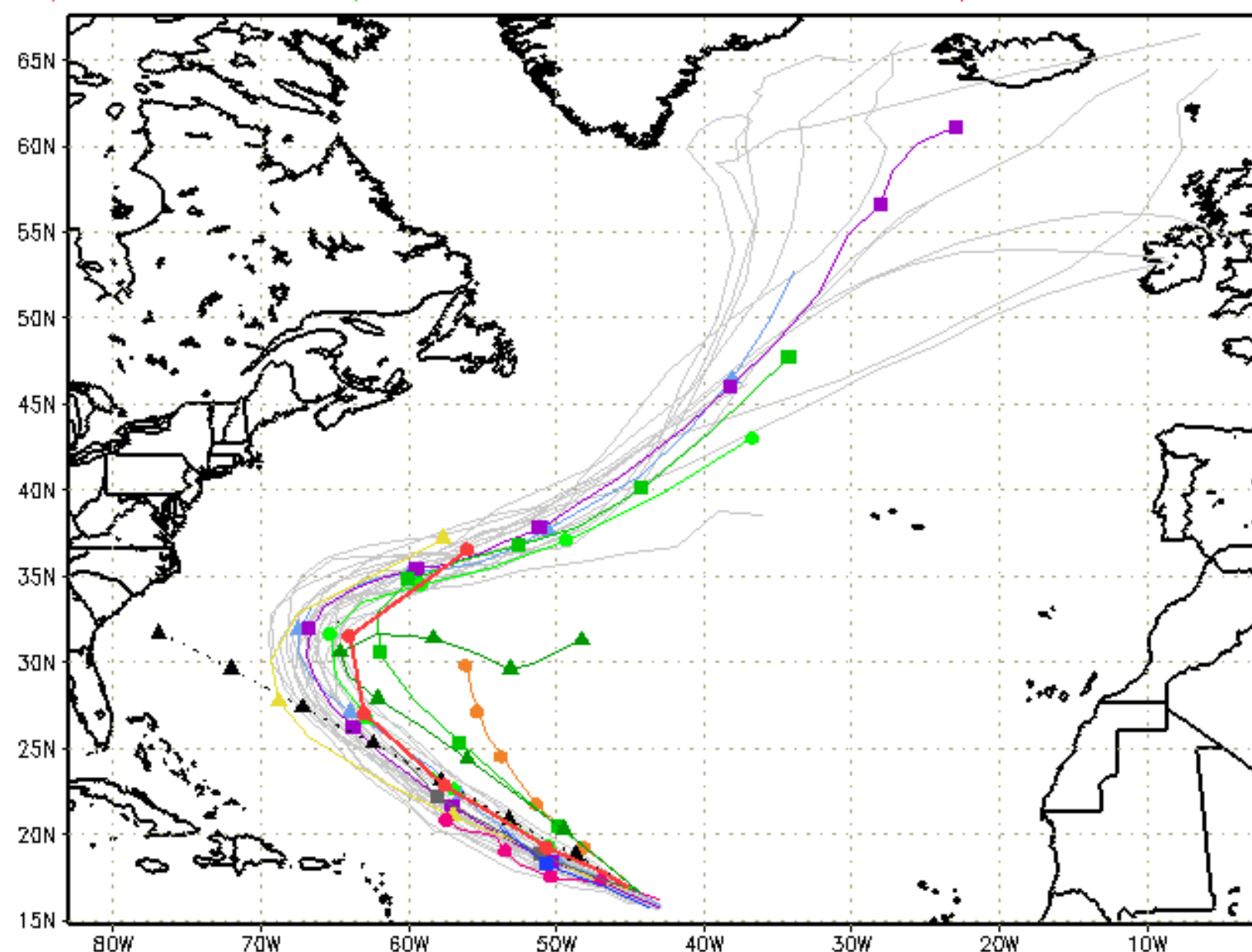
Hurricane Trop.Storm

TROPICAL DEPRESSION JOYCE (AL10)

Early-cycle track guidance initialized at 0600 UTC, 24 August 2012



---▲--- XTRP 24/0600Z	▲ BAMD 24/0600Z	▲ GFDL 24/0000Z	▲ AVNO 24/0000Z	▲ CMC 24/0600Z
■ TVCN 24/0600Z	■ BAMB 24/0600Z	■ UKM 24/0000Z	■ AEMN 24/0000Z	■ APxx 24/0000Z
● NHC 24/0900Z	● BAMS 24/0600Z	● NGPS Not Avail	● HWRF 24/0000Z	● GLP5 24/0600Z



storm_10
 sfwmd.gov
 weather@sfwmd.gov
 24-Aug 05:51 EDT

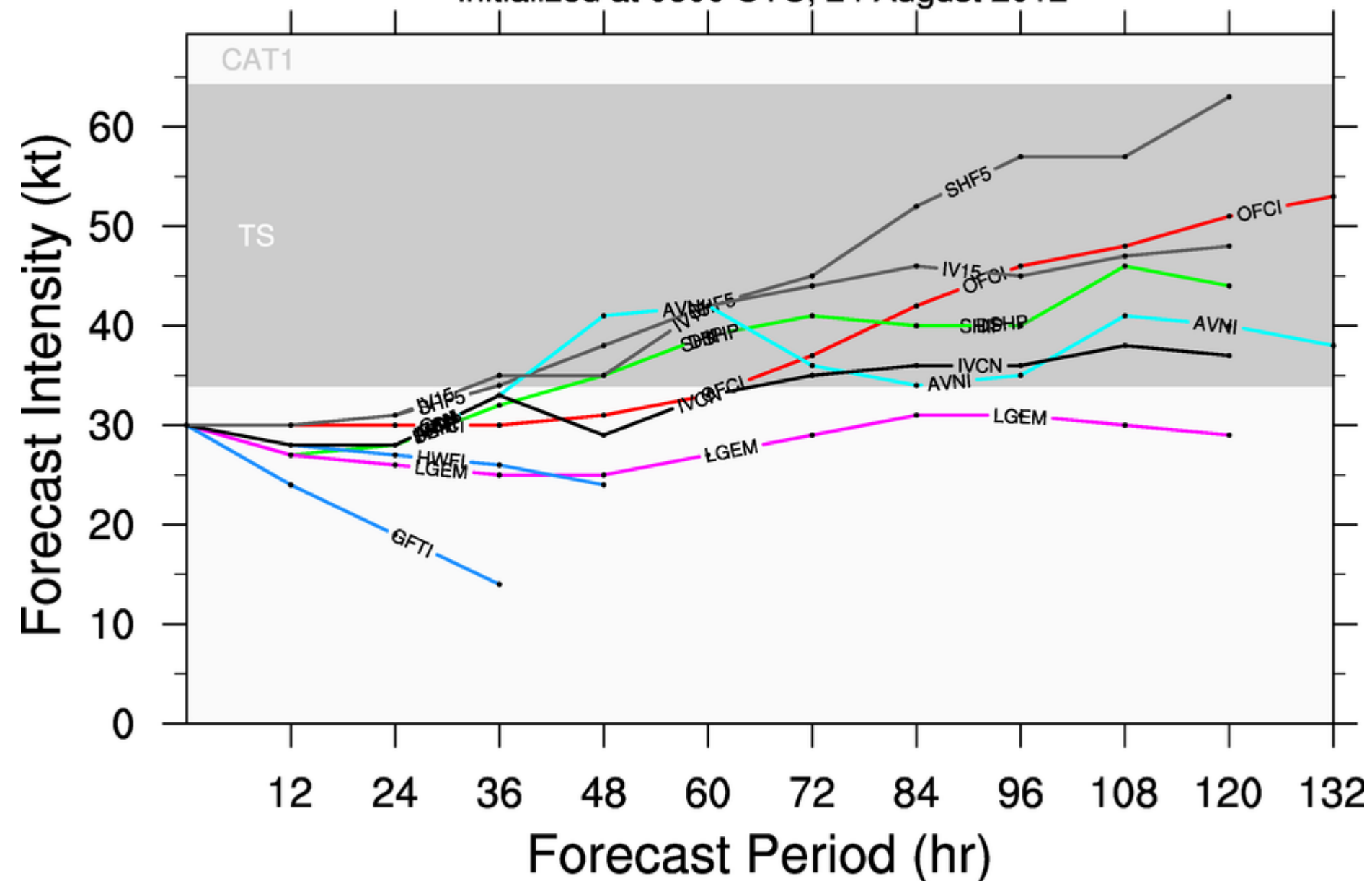
NHC Advisories and County Emergency Management Statements supersede this product.
 This graphic should complement, not replace, NHC discussions.
 If anything on this graphic causes confusion, ignore the entire product.
 For full info, see <http://my.sfwmd.gov/sfwmd/common/images/weather/plots.html>



TROPICAL DEPRESSION JOYCE (AL10)

Early-cycle intensity guidance

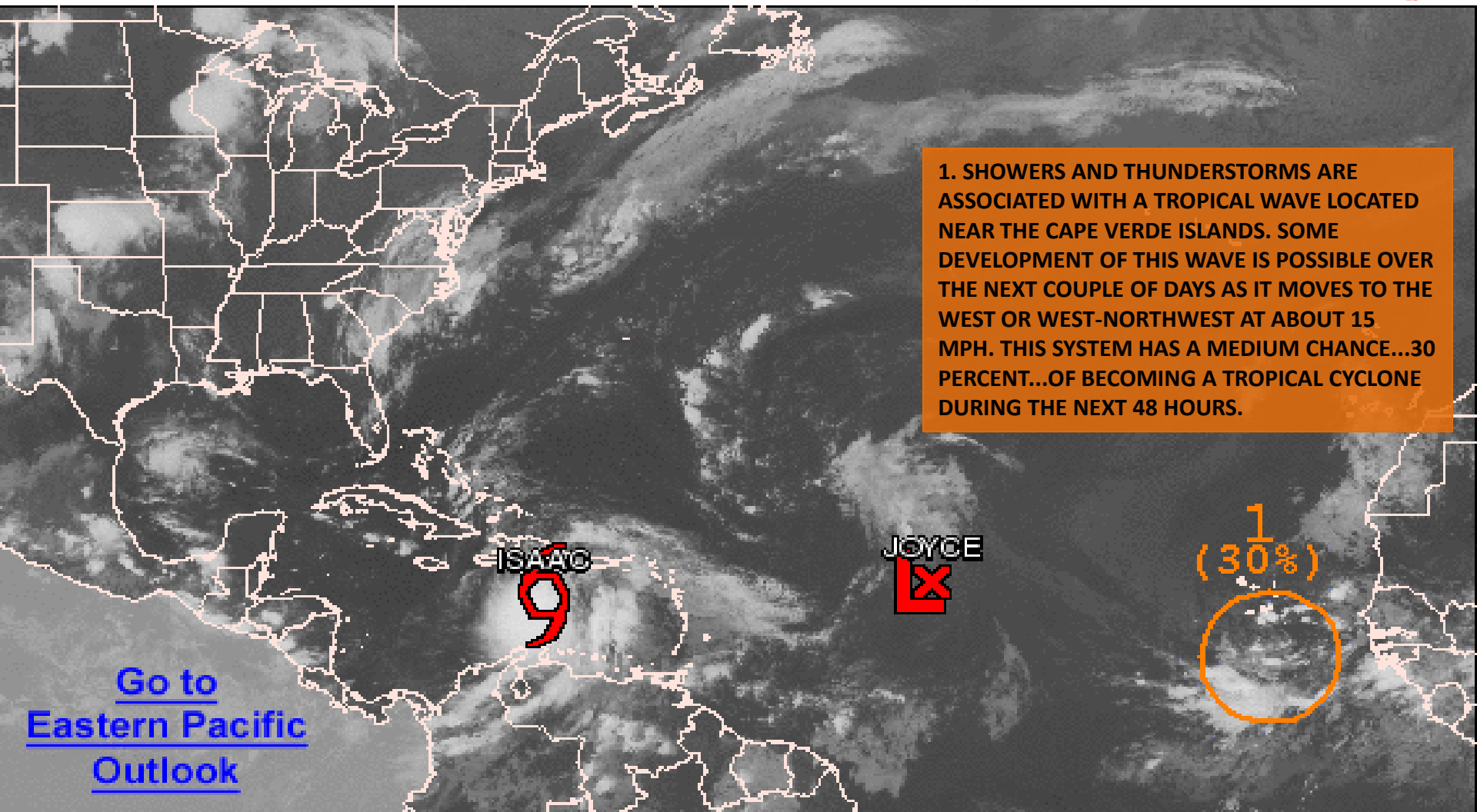
initialized at 0600 UTC, 24 August 2012





Graphical Tropical Weather Outlook

National Hurricane Center Miami, Florida



200 AM EDT FRI AUG 24 2012

Satellite Image: 0125 AM EDT

Outlined areas denote current position of systems discussed in the Tropical Weather Outlook. Color indicates probability of tropical cyclone formation within 48 hours.



Low <30%

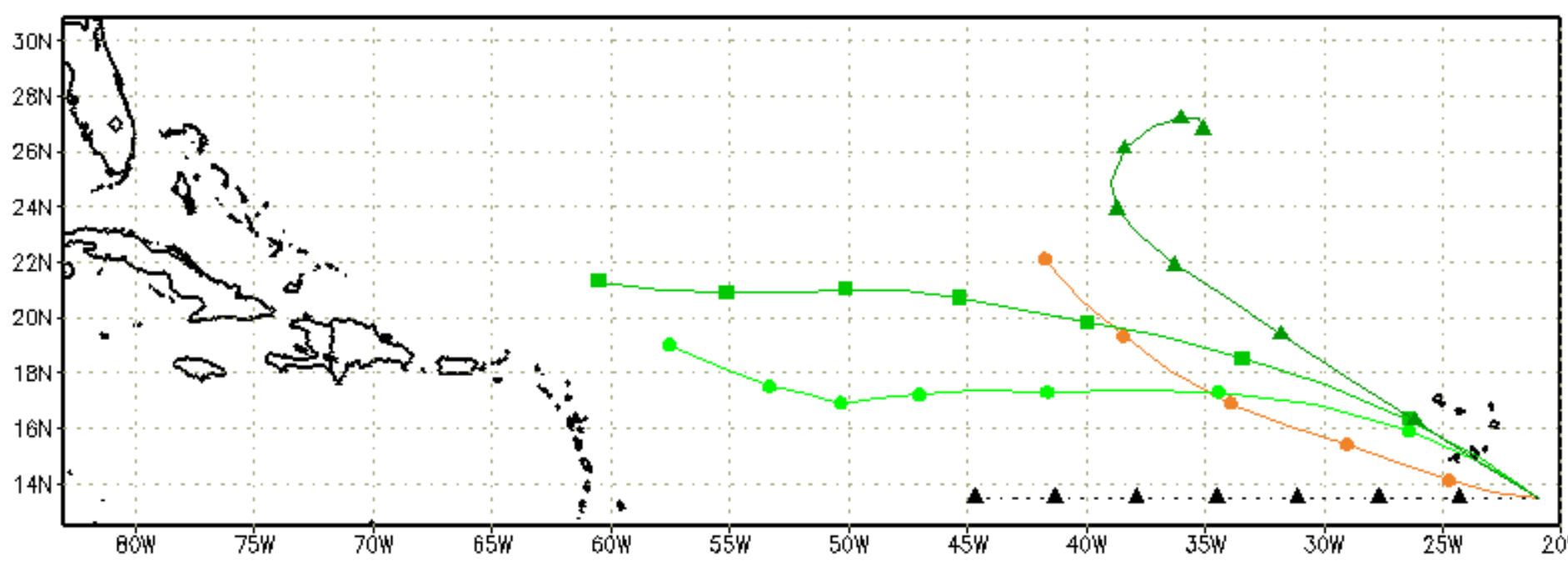


Medium 30-50%



High >50%

---▲--- XTRP 24/0600Z	---▲--- BAMD 24/0600Z	---▲--- GFDL Not Avail	---▲--- AVNO Not Avail	---▲--- CMC Not Avail
---■--- TVCN Not Avail	---■--- BAMB 24/0600Z	---■--- UKM 24/0000Z	---■--- AEMN Not Avail	---■--- APxx Not Avail
---●--- NHC Not Avail	---●--- BAMS 24/0600Z	---●--- NGPS Not Avail	---●--- HWRF Not Avail	---●--- CLP5 24/0600Z



storm_97
sfwmd.gov
 weather@sfwmd.gov
 24-Aug 05:51 EDT

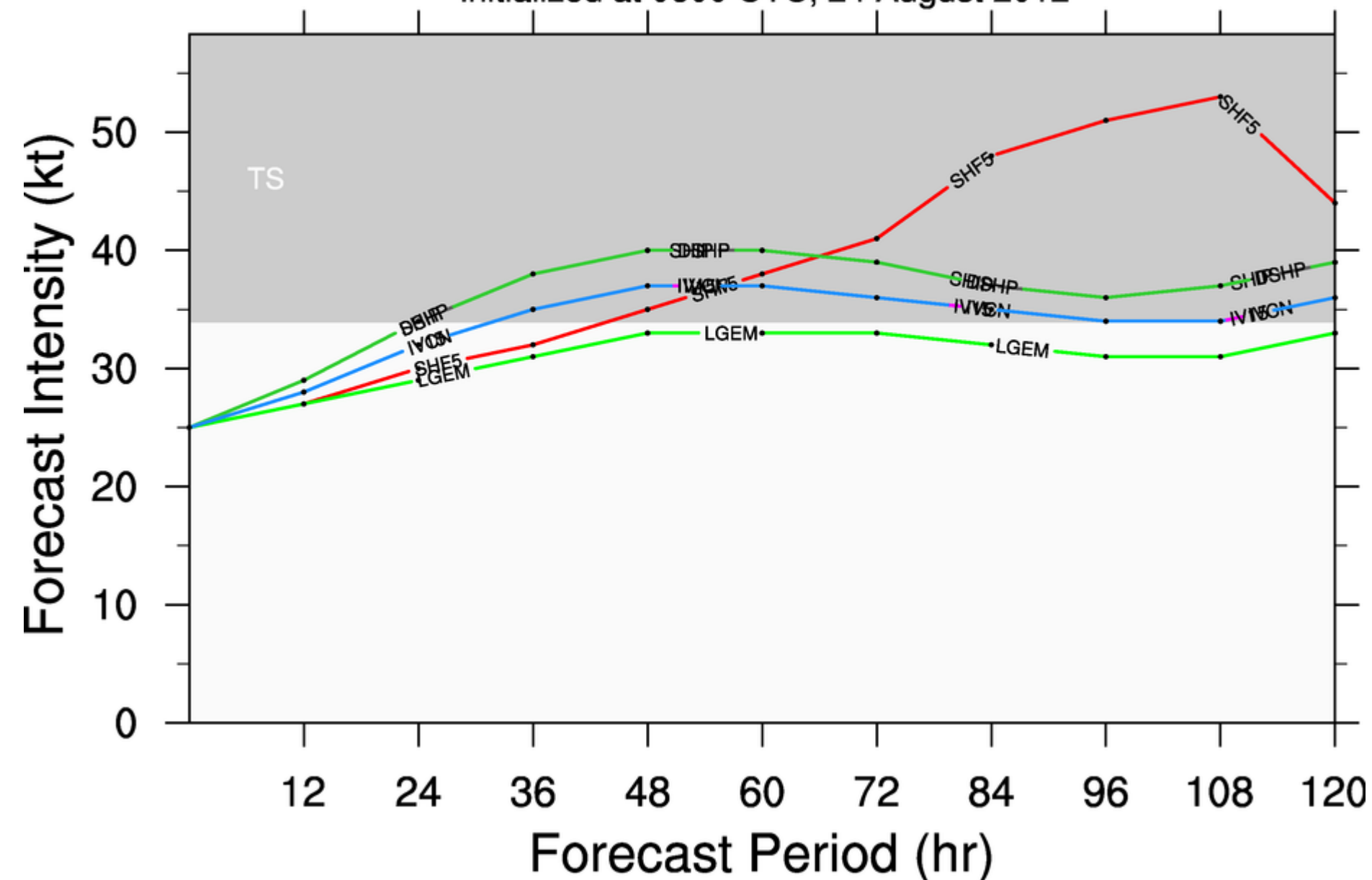
NHC Advisories and County Emergency Management Statements supersede this product.
 This graphic should complement, not replace, NHC discussions.
 If anything on this graphic causes confusion, ignore the entire product.
 For full info, see <http://my.sfwmd.gov/sfwmd/common/images/weather/plots.html>



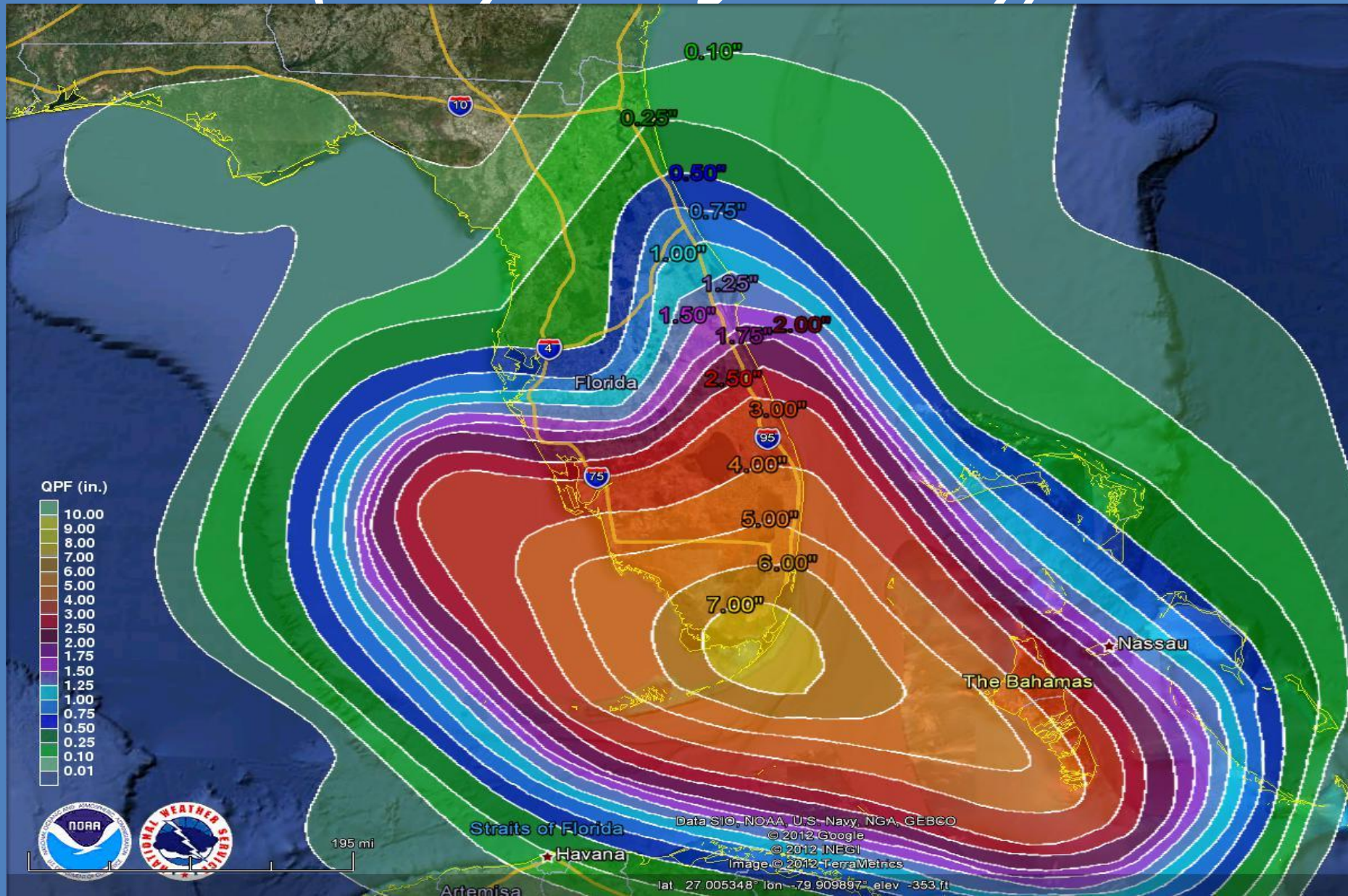
DISTURBANCE INVEST (AL97)

Early-cycle intensity guidance

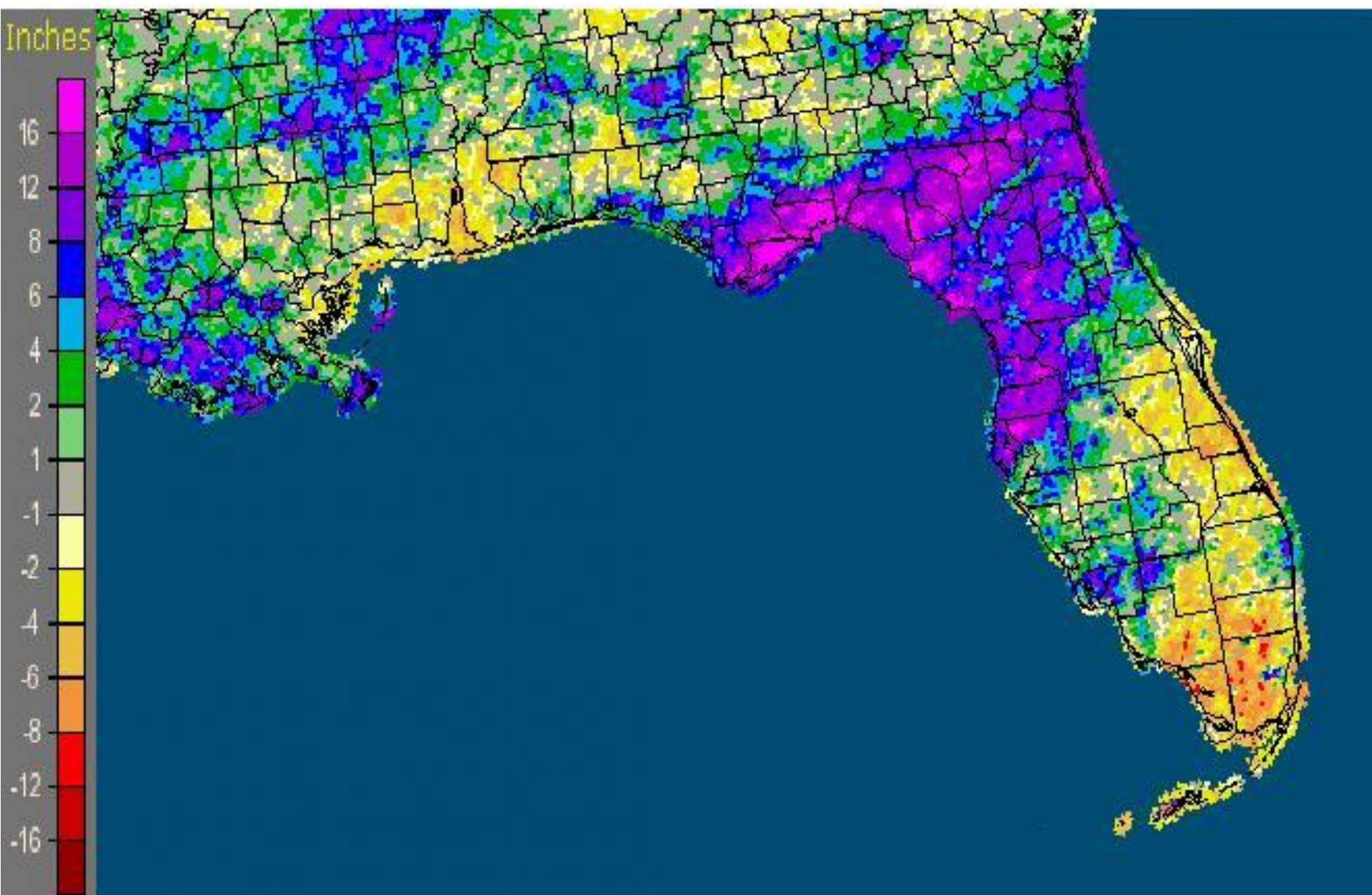
initialized at 0600 UTC, 24 August 2012



Forecast Total Rainfall Accumulations (Friday Through Monday)



Florida: Current 60-Day Departure from Normal Precipitation
Valid at 8/23/2012 1200 UTC- Created 8/24/12 0:12 UTC



Aug 24, 2012

5:55 AM Eastern

RIVER CONDITIONS

