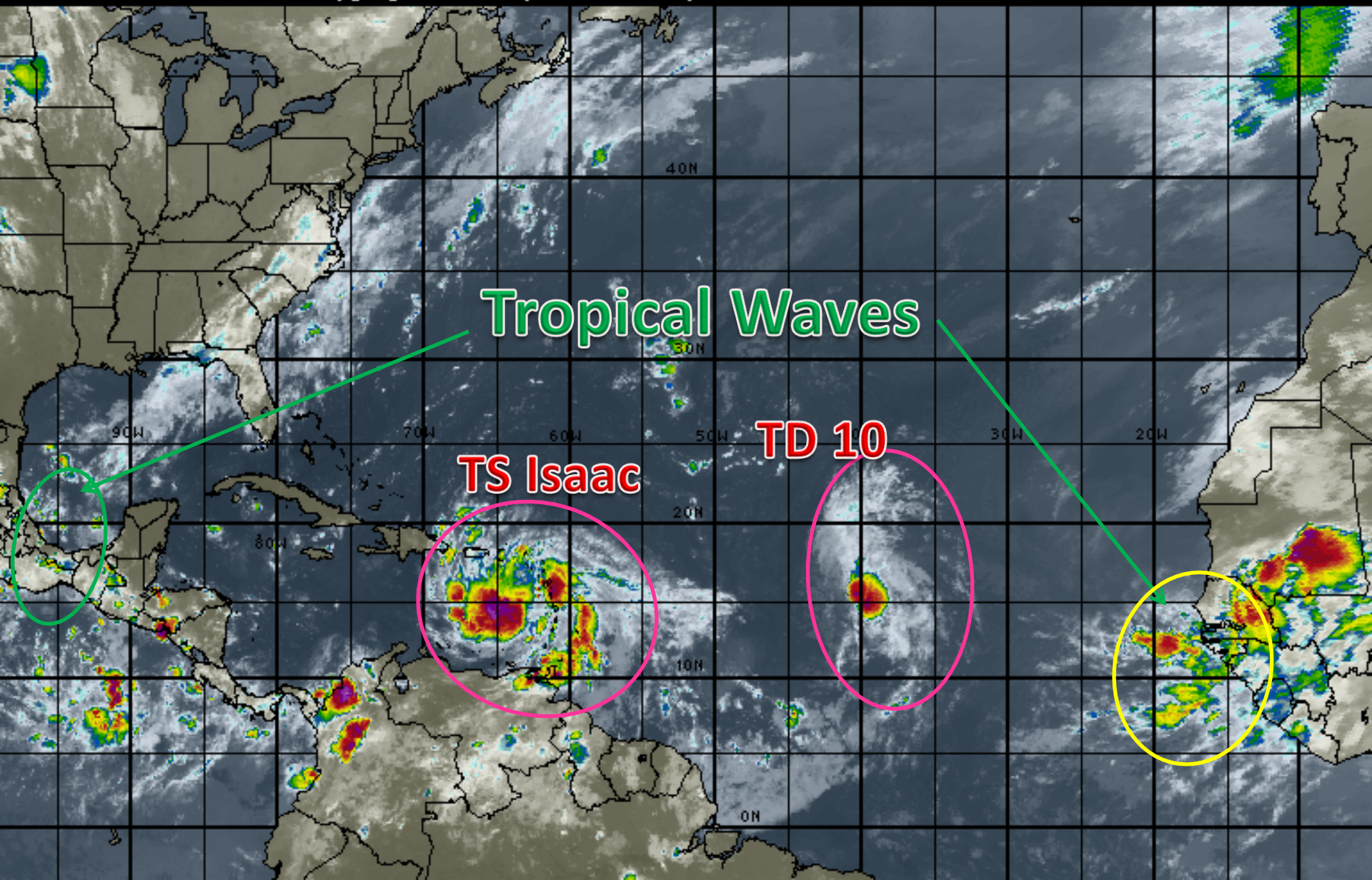


# Atlantic Basin Satellite Image

06:00 23-AUG-2012 GMT ©Copyright WSI Corporation <http://www.wsi.com>





# Tropical Storm Isaac

5 AM EDT Thu Aug 23 2012

Position 15.3 N 64.0 W

Maximum Winds 40 mph

Gusts 50 mph

Movement W at 11 mph

Minimum Pressure 1004 mb (29.64 inches)

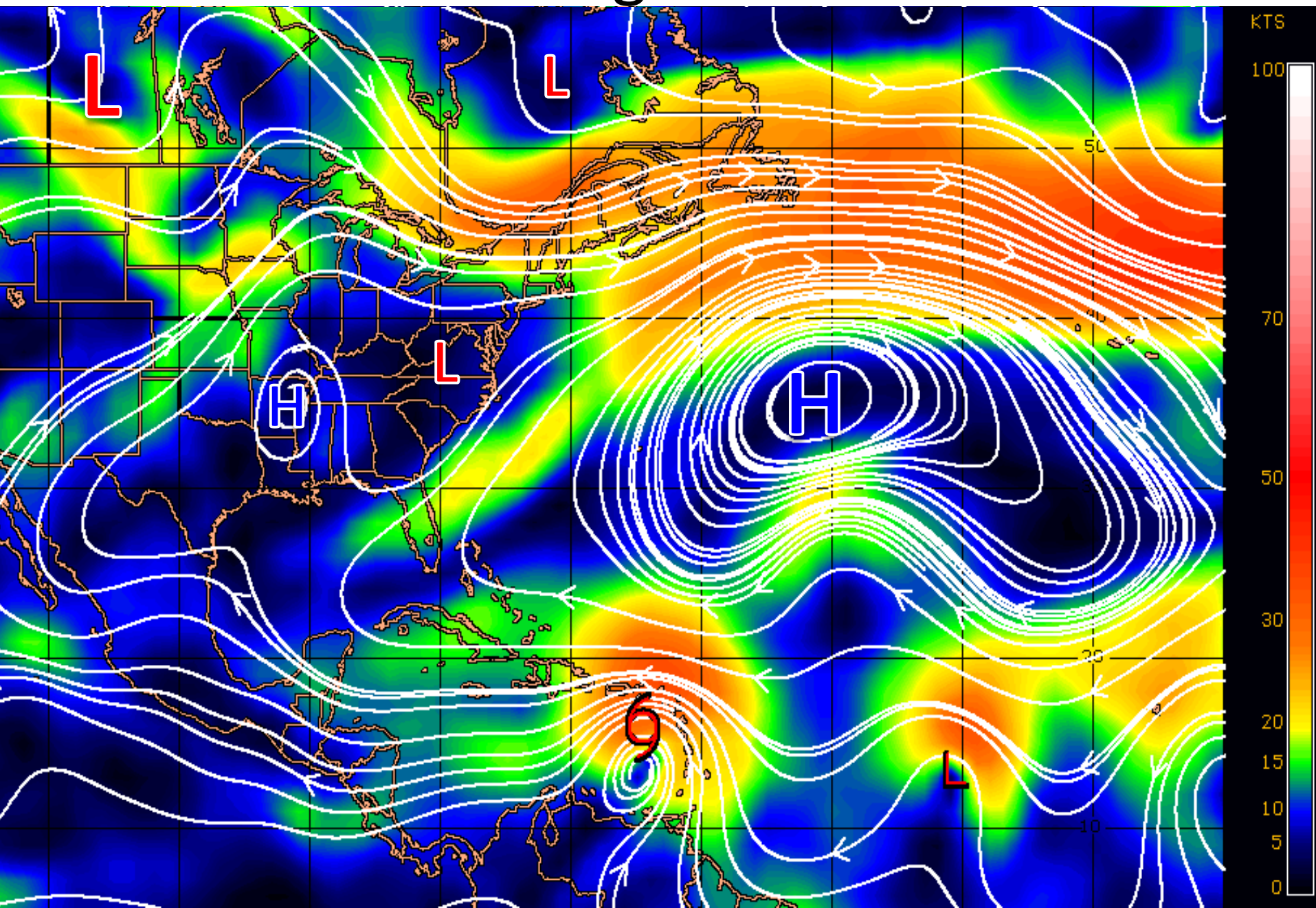
Blue Marble basemap imagery courtesy NASA

Satellite 9:08 AM UTC  
5:08 AM EDT



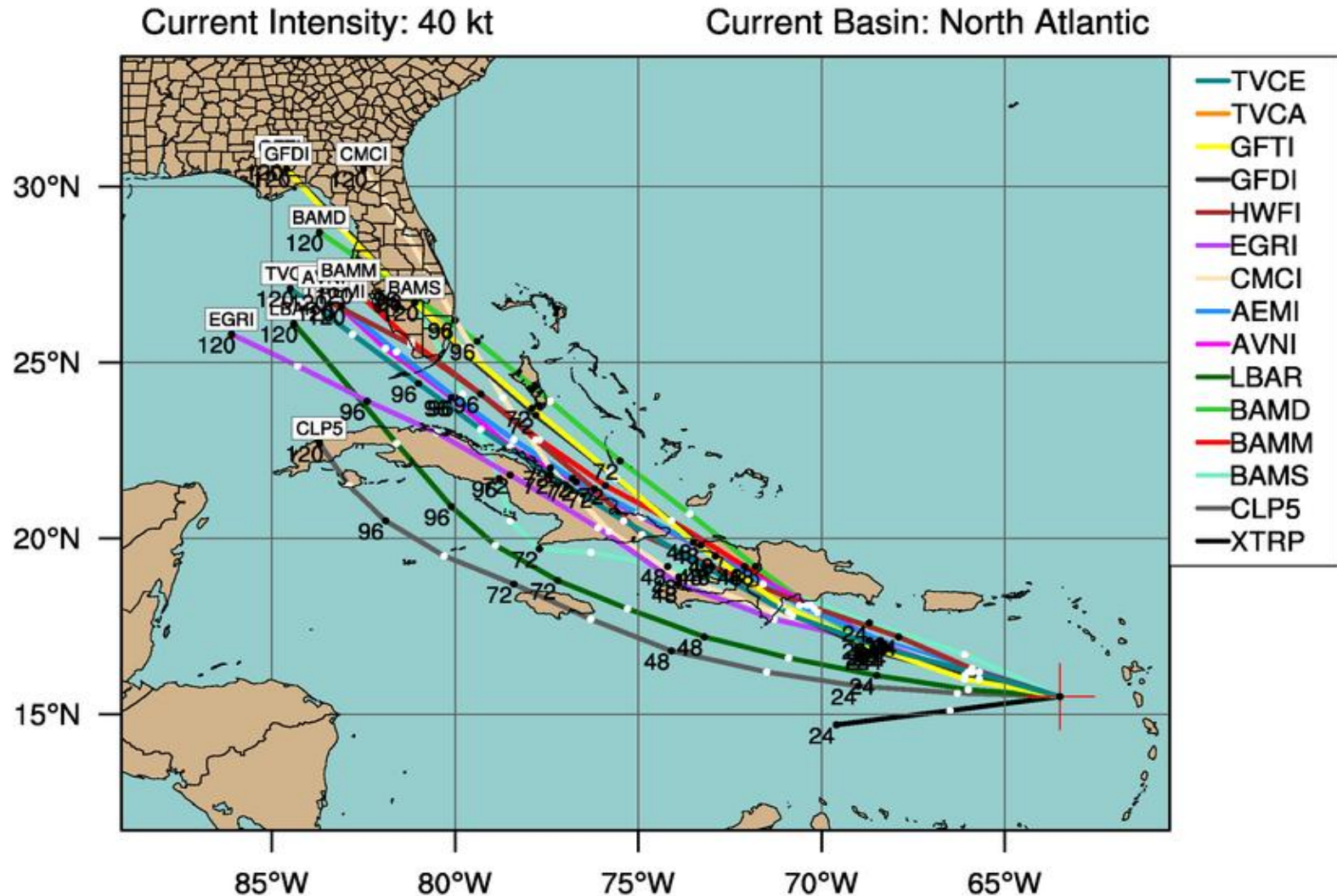


# Steering Currents



# TROPICAL STORM ISAAC (AL09)

Early-cycle track guidance initialized at 0600 UTC, 23 August 2012



By using this plot, the user agrees to the UCAR Terms of Use  
which can be accessed at: <http://www2.ucar.edu/terms-of-use>

Plot generated at 0752 UTC 23 August 2012

# Tropical Storm Isaac

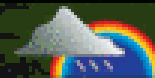
5 AM EDT Thu Aug 23 2012

Models: Points 12 hours apart

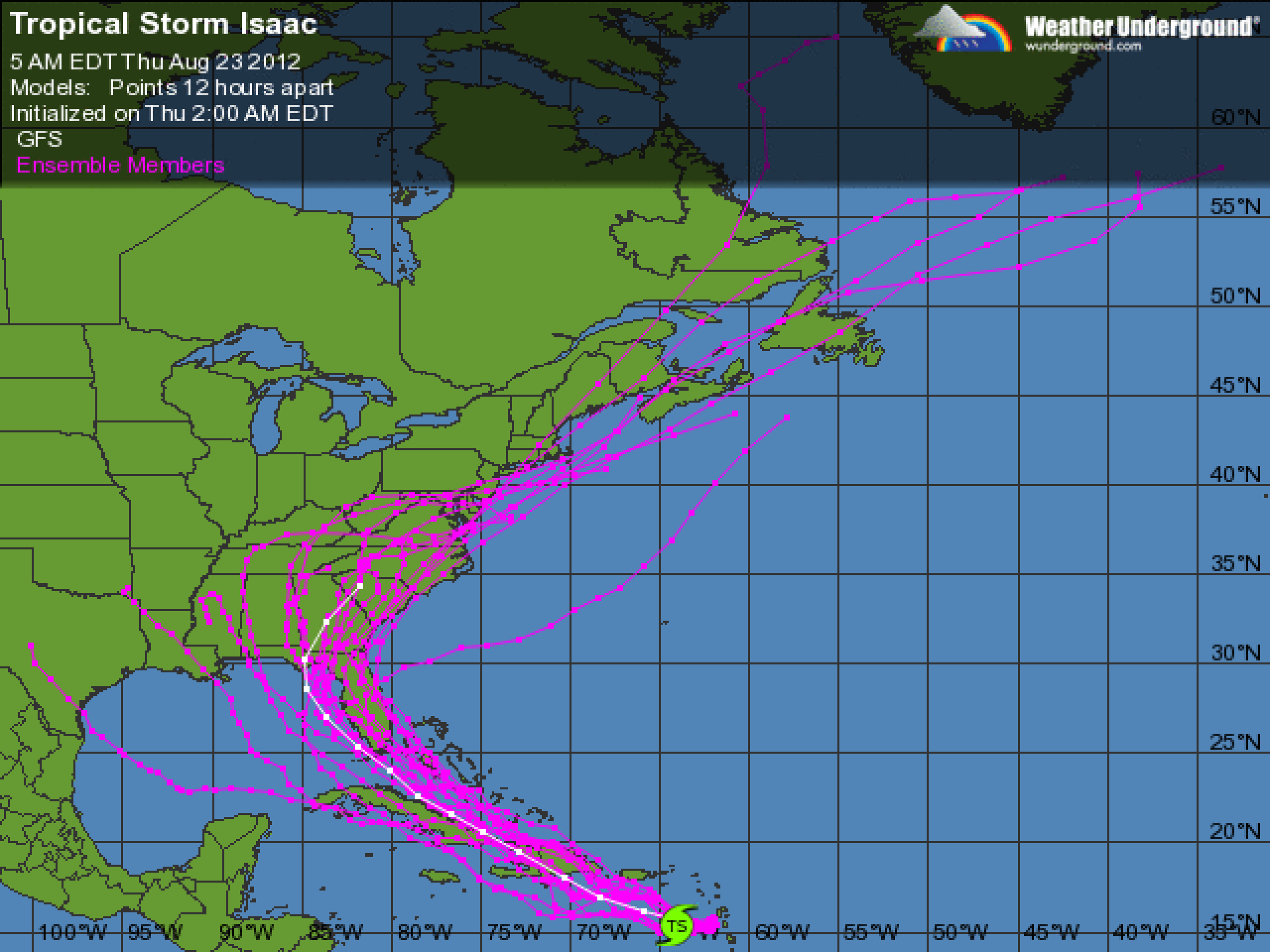
Initialized on Thu 2:00 AM EDT

GFS

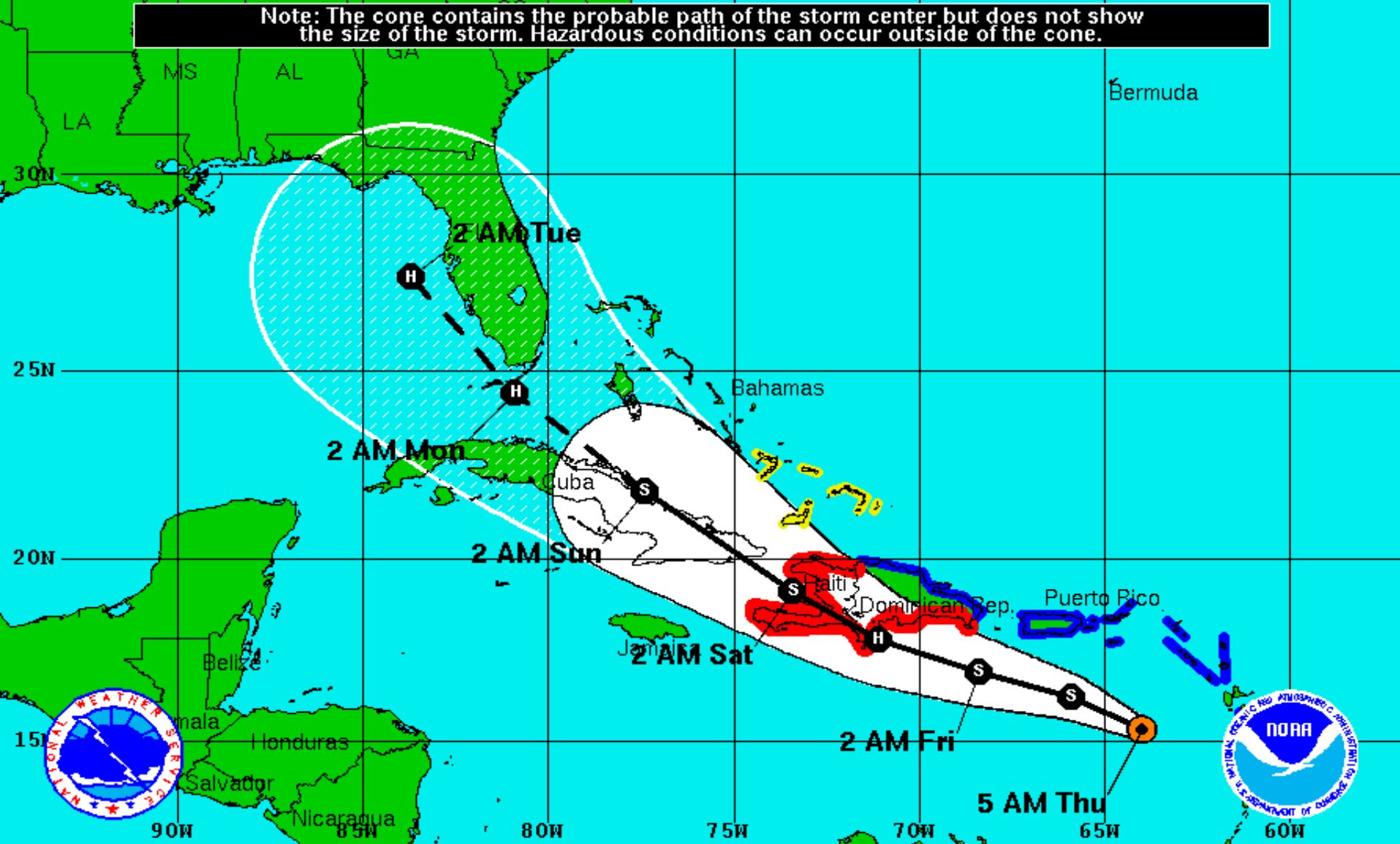
Ensemble Members



Weather Underground®  
wunderground.com



Note: The cone contains the probable path of the storm center but does not show the size of the storm. Hazardous conditions can occur outside of the cone.



**Tropical Storm Isaac**  
 Thursday August 23, 2012  
 5 AM EDT Advisory 9  
 NWS National Hurricane Center

**Current Information:** ●  
 Center Location 15.3 N 64.0 W  
 Max Sustained Wind 40 mph  
 Movement W at 12 mph

**Forecast Positions:**  
 ● Tropical Cyclone ○ Post-Tropical  
 Sustained Winds: D < 39 mph  
 S 39-73 mph H 74-110 mph M > 110mph

**Potential Track Area:**  
 Day 1-3 Day 4-5

**Watches:**  
 Hurricane Trop.Storm

**Warnings:**  
 Hurricane Trop.Storm





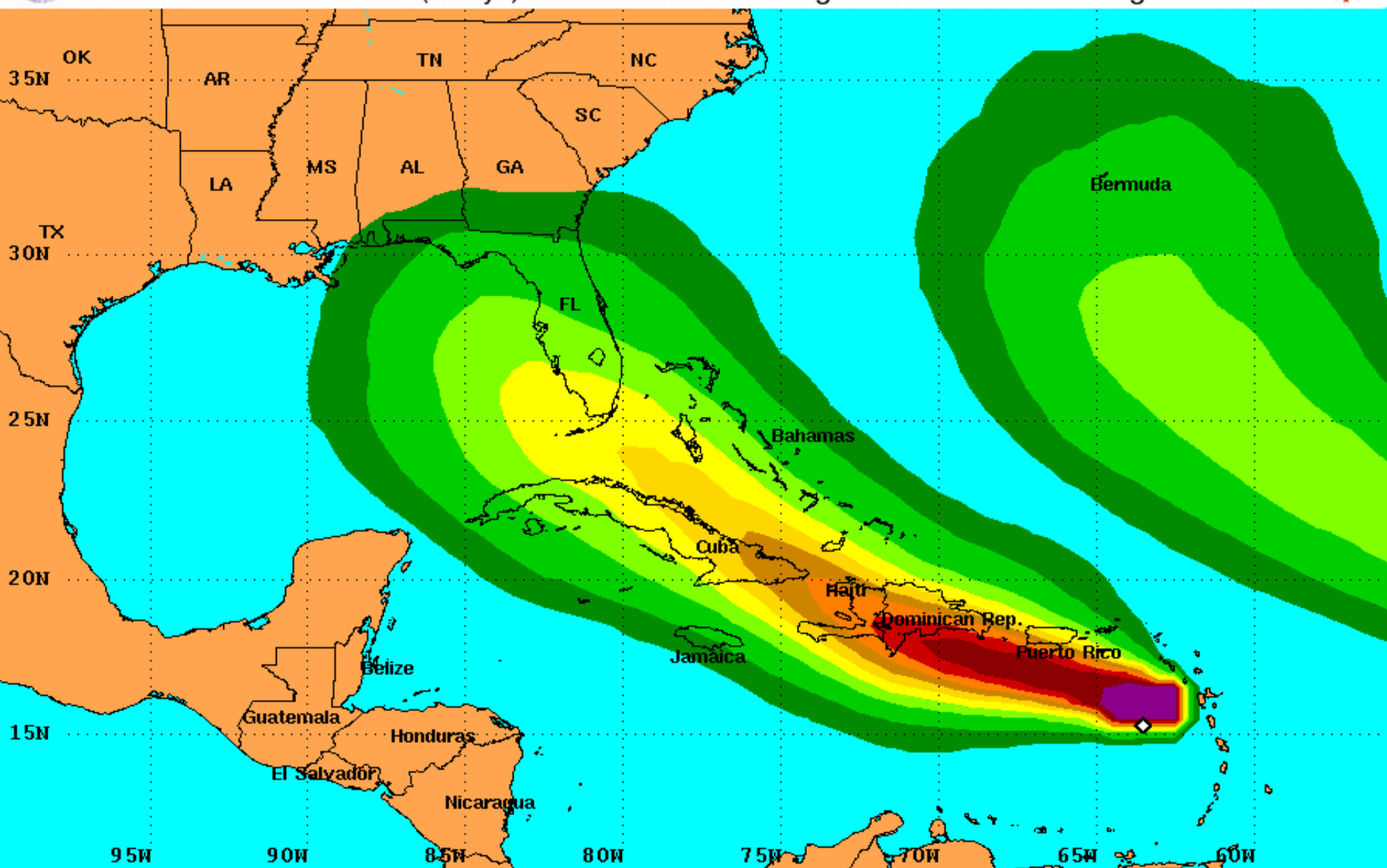
**Tropical Storm Isaac #9**  
**August 23, 2012**  
**5 AM EDT Thursday**  
Current Location 15.3 N 64.0 W  
Max Sustained Wind 40 mph (Cat 0)  
Current Movement 12 mph

- Current Location
- Forecast Positions
- Potential Track Area



# Tropical Storm Force Wind Speed Probabilities

For the 120 hours (5 days) from 2 AM AST Thu Aug 23 to 2 AM AST Tue Aug 28

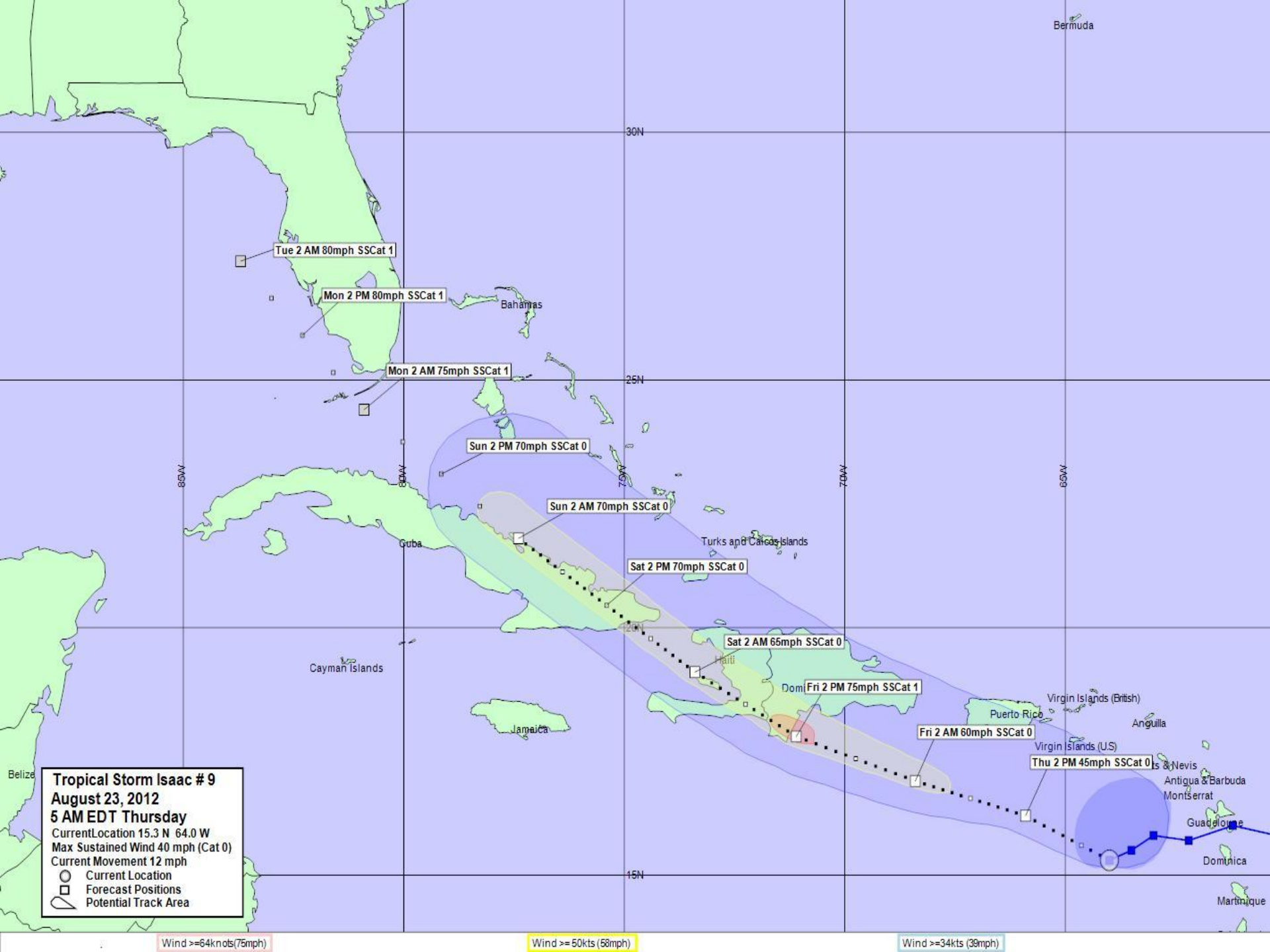


Probability of tropical storm force surface winds (1-minute average  $\geq 39$  mph) from all tropical cyclones

◇ indicates TROPICAL STORM ISAAC center location at 2 AM AST Thu Aug 23 2012 (Forecast/Advisory #9)



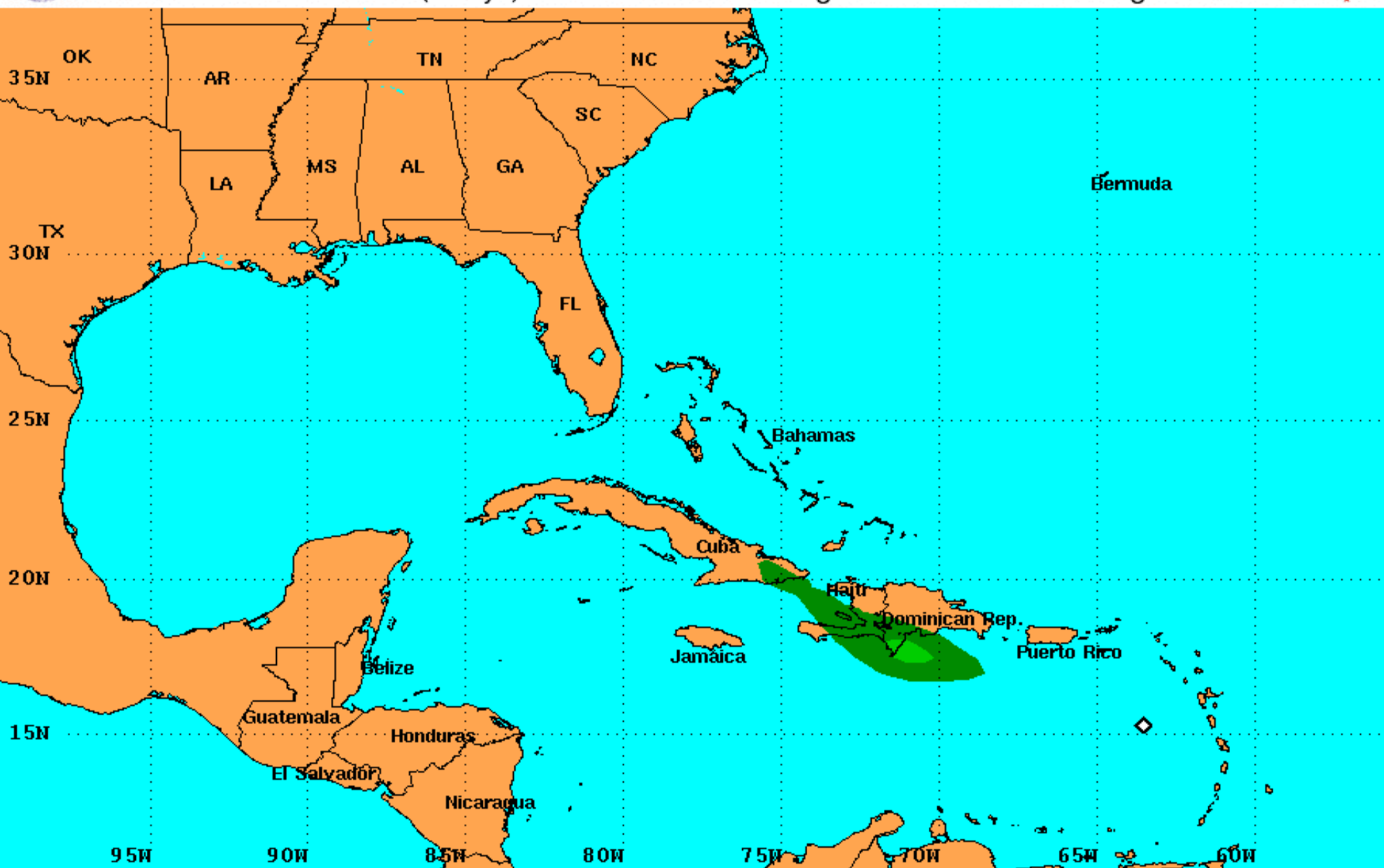






# Hurricane Force Wind Speed Probabilities

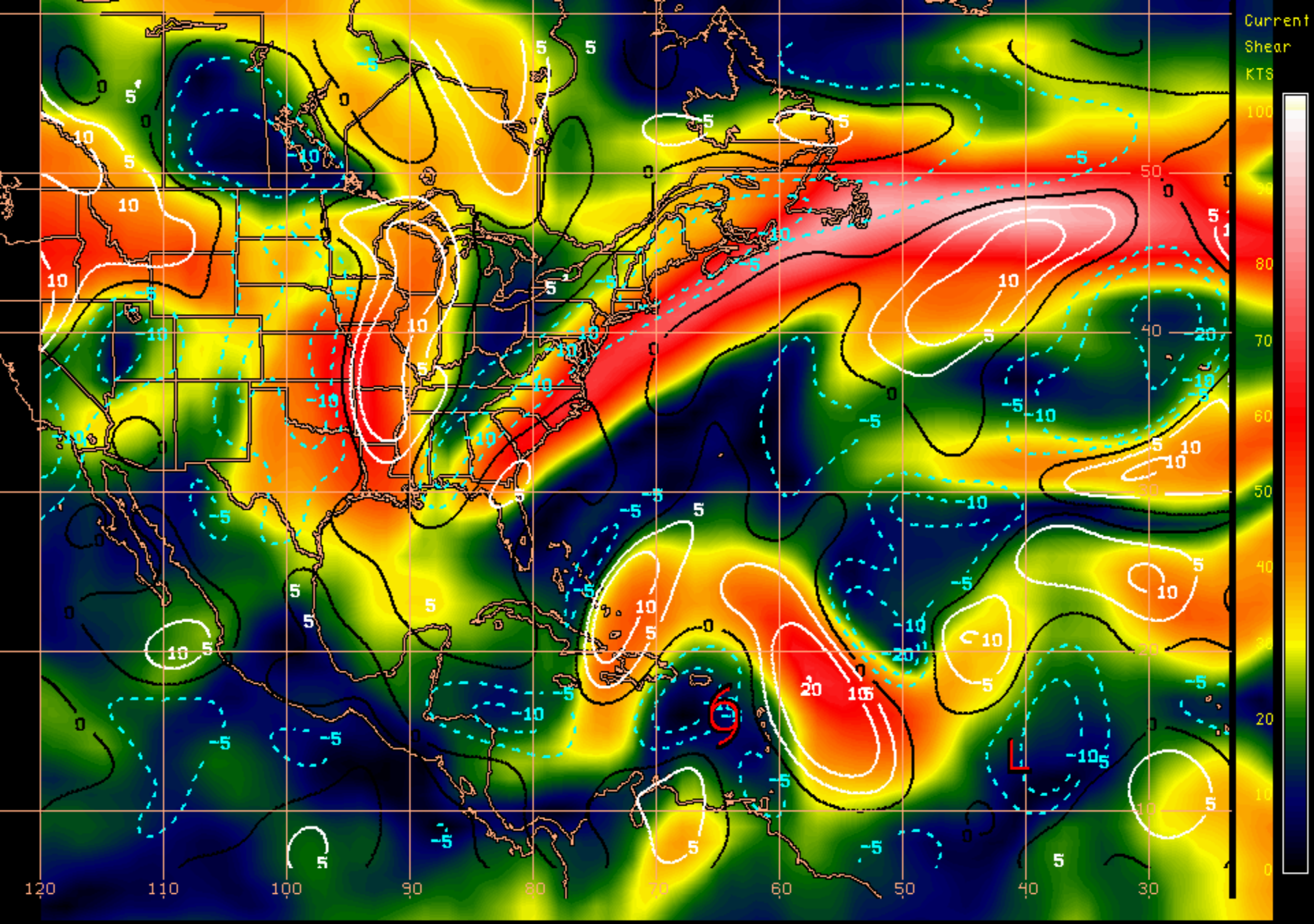
For the 120 hours (5 days) from 2 AM AST Thu Aug 23 to 2 AM AST Tue Aug 28



Probability of hurricane force surface winds (1-minute average  $\geq 74$  mph) from all tropical cyclones

◇ indicates TROPICAL STORM ISAAC center location at 2 AM AST Thu Aug 23 2012 (Forecast/Advisory #9)

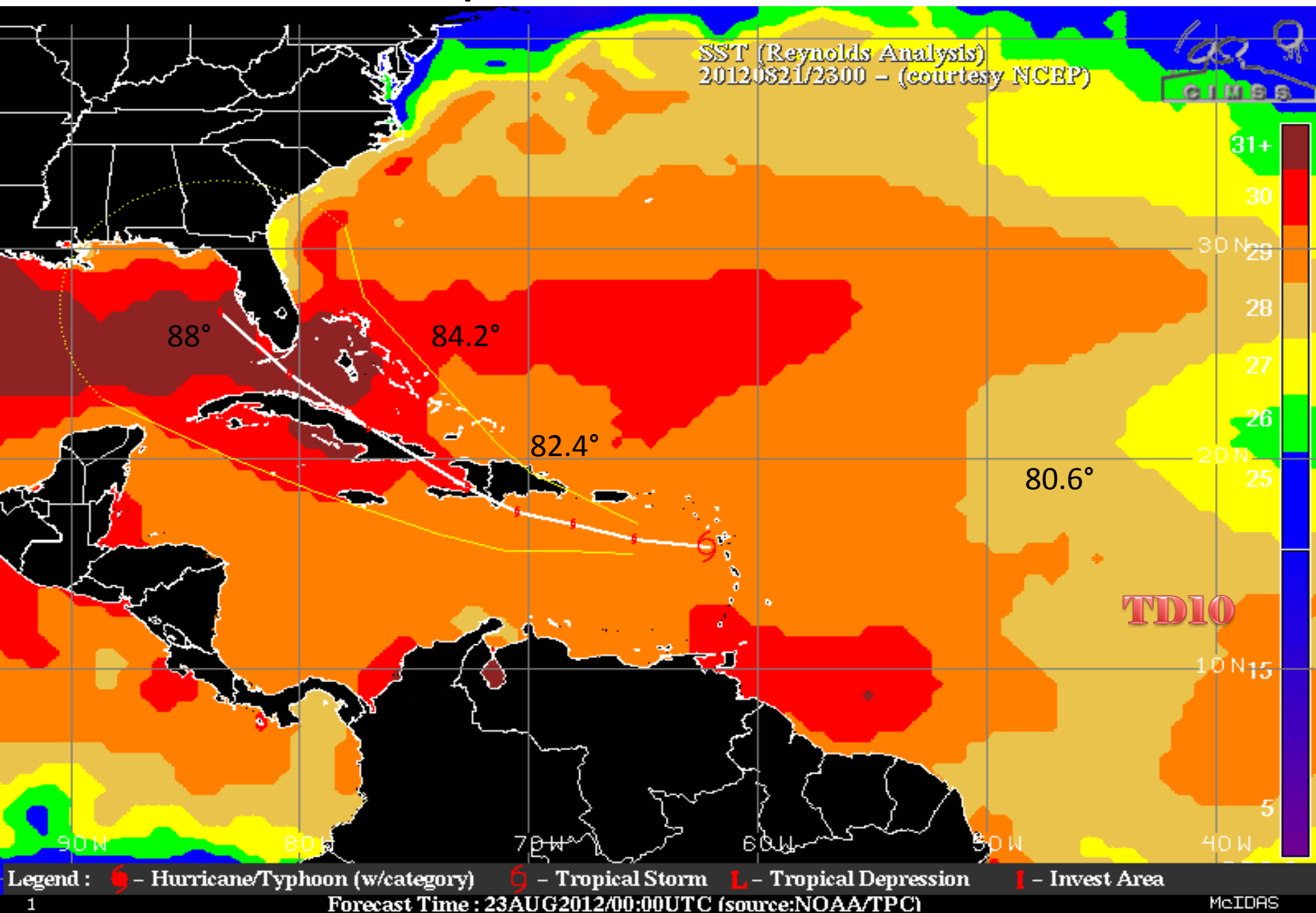




Shear Tendency (KTS) Over Past 24 Hours: Increasing — Decreasing ----



# Sea Surface Temperatures Around Isaac & TD10



initialized at 0600 UTC, 23 August 2012





Intensity (Maximum Wind Speed) Probability Table  
Tropical Storm Isaac Advisory Number 9  
5:00 AM AST Aug 23 2012



Wind Range (mph)	Forecast Time						
	12 hour for 2 PM Thu	24 hour for 2 AM Fri	36 hour for 2 PM Fri	48 hour for 2 AM Sat	72 hour for 2 AM Sun	96 hour for 2 AM Mon	120 hour for 2 AM Tue
Dissipated	1%	1%	2%	5%	10%	13%	22%
Tropical Depression (<39)	16%	10%	15%	17%	18%	13%	13%
Tropical Storm (39-73)	81%	77%	51%	59%	51%	44%	38%
Hurricane (all categories)	2%	12%	32%	20%	21%	29%	28%
-- Category 1 (74-95)	2%	11%	26%	16%	17%	23%	21%
-- Category 2 (96-110)	<1%	1%	4%	3%	3%	4%	5%
-- Category 3 (111-130)	<1%	<1%	1%	1%	1%	2%	2%
-- Category 4 (131-155)	<1%	<1%	<1%	<1%	<1%	<1%	<1%
-- Category 5 (>155)	<1%	<1%	<1%	<1%	<1%	<1%	<1%
Forecast Maximum Wind	45 mph	60 mph	75 mph	65 mph	70 mph	75 mph	80 mph

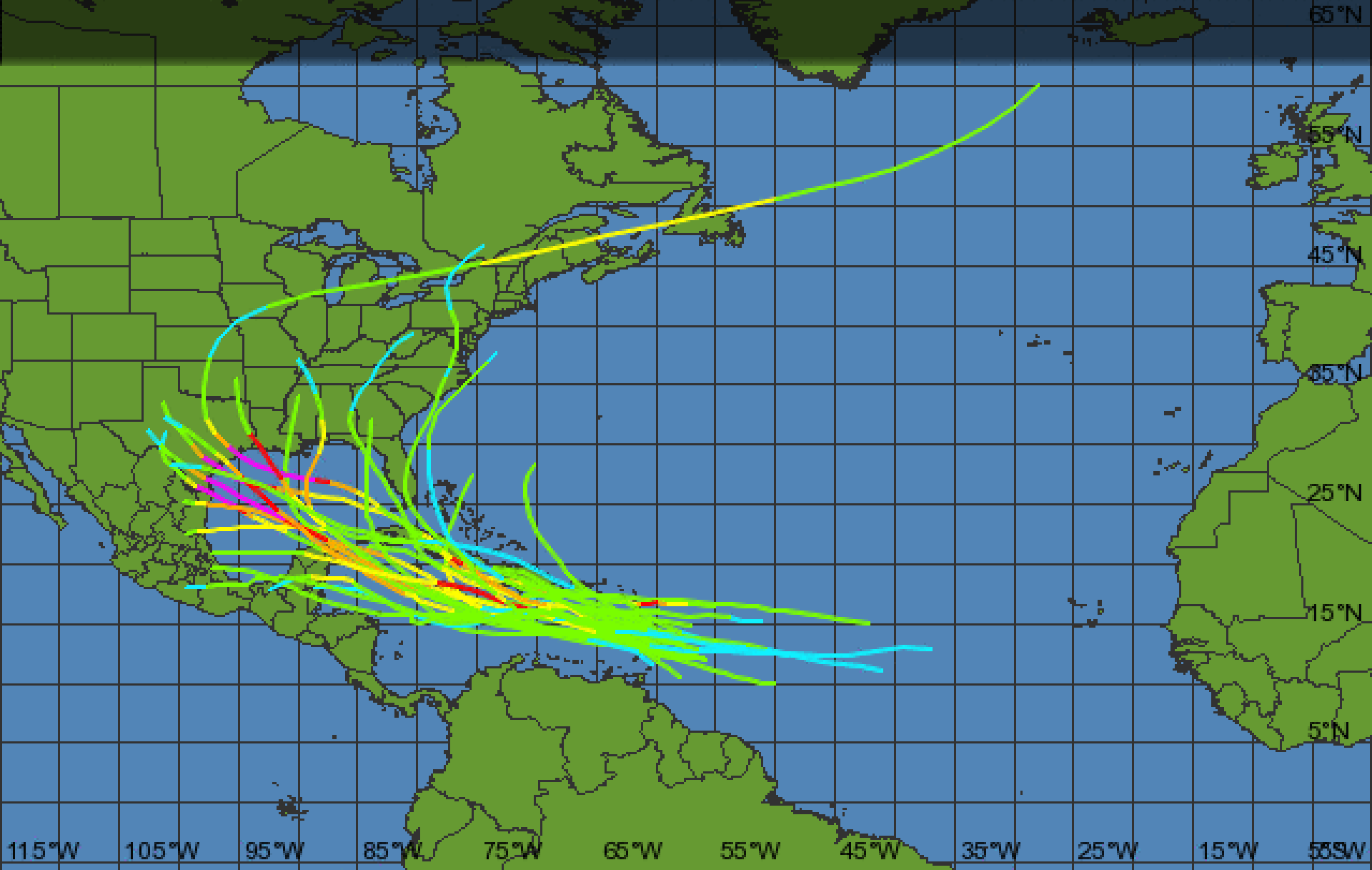


# Tropical Storm Isaac

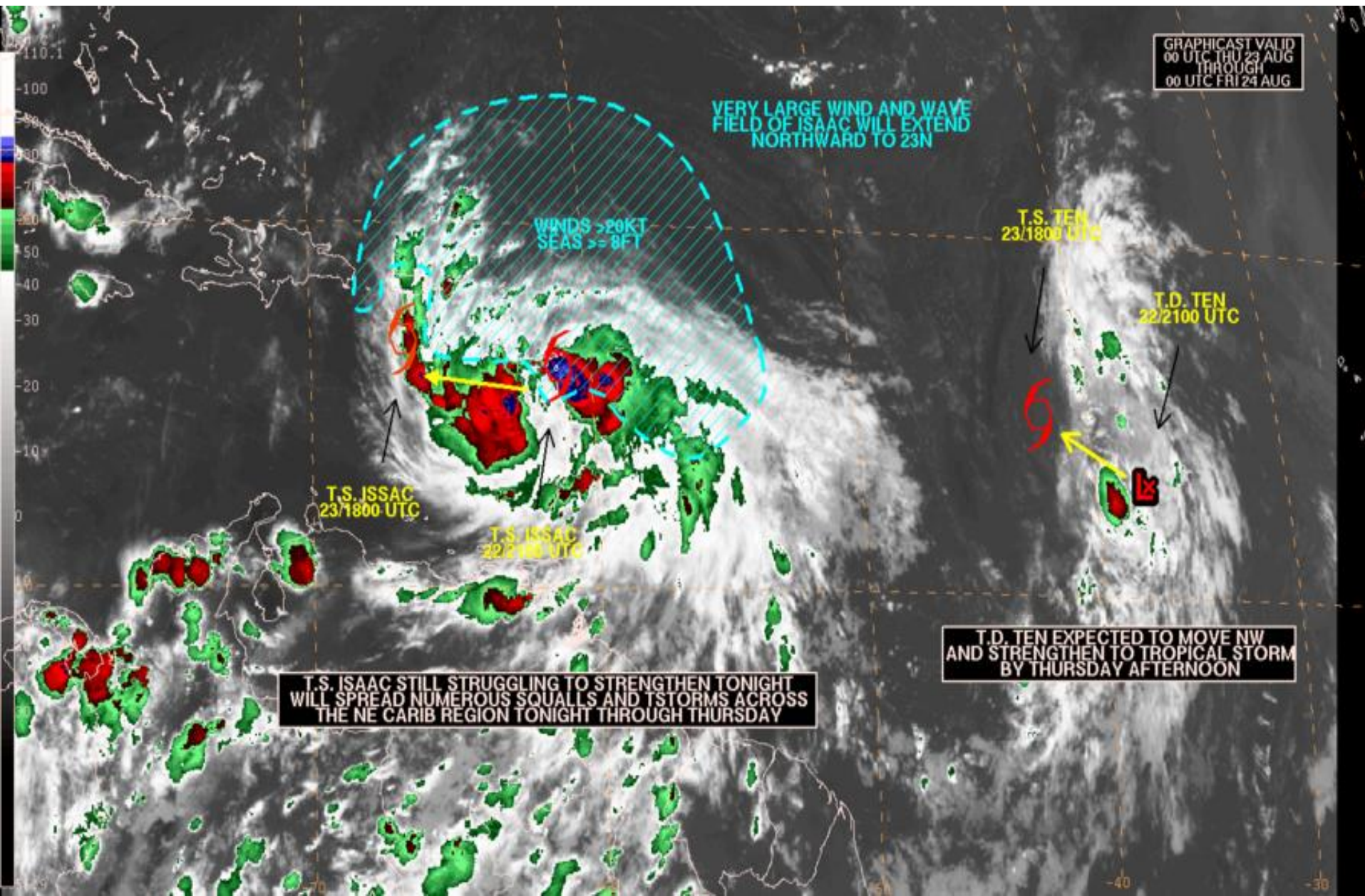
Tracks of all August  
Tropical Storms  
Within 2 degrees of Isaac  
Between 1851 and 2011

## Storm Category

Tropical Depression	Tropical Storm	Category 1	Category 2	Category 3	Category 4	Category 5
< 39 mph	39-73 mph	74-95 mph	96-110 mph	111-130 mph	131-155 mph	156+ mph



# NHC short term graphical forecast





# TD Ten

5 AM EDT Thu Aug 23 2012

Position 14.5 N 40.6 W

Maximum Winds 35 mph

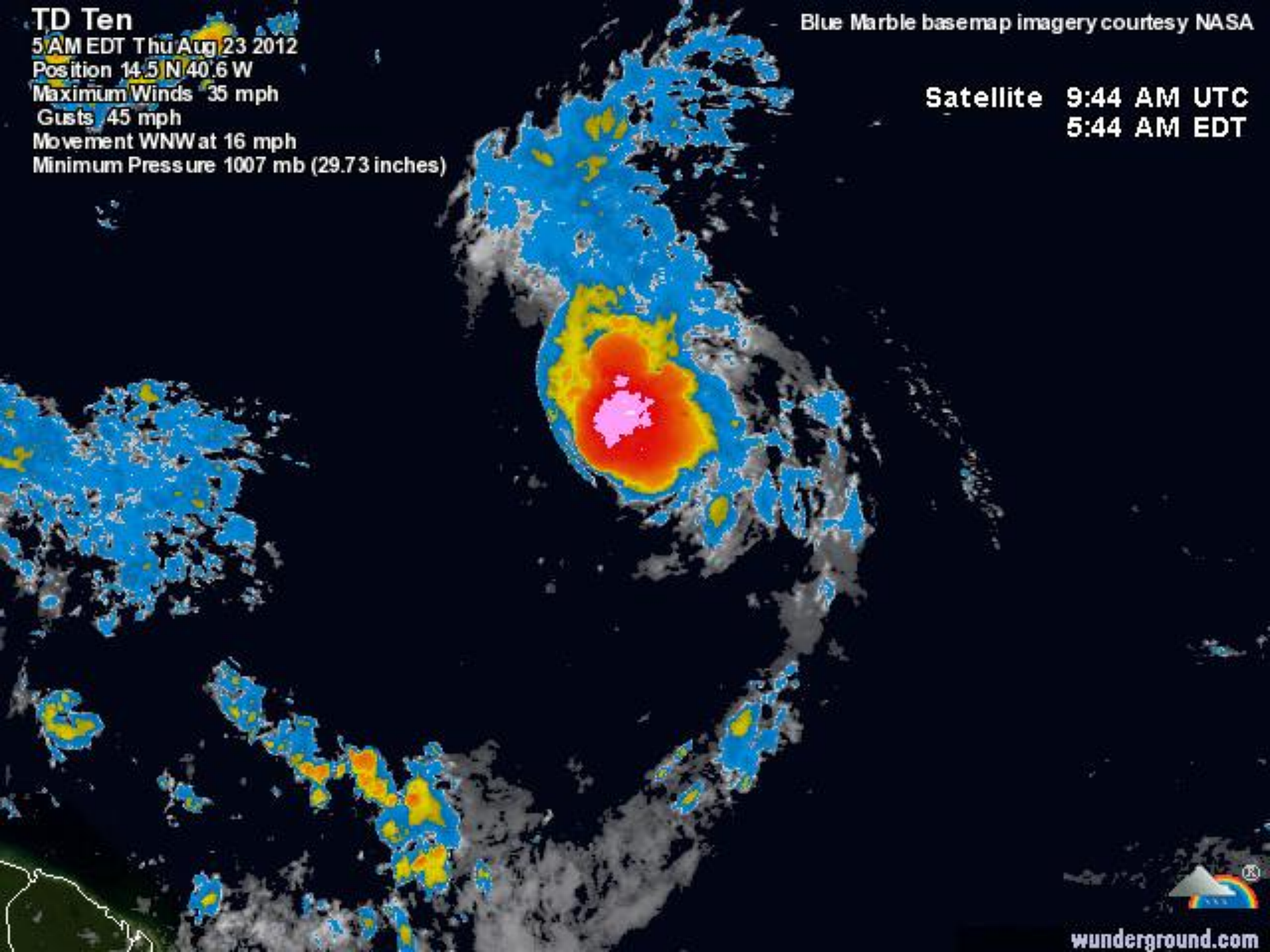
Gusts 45 mph

Movement WNW at 16 mph

Minimum Pressure 1007 mb (29.73 inches)

Blue Marble basemap imagery courtesy NASA

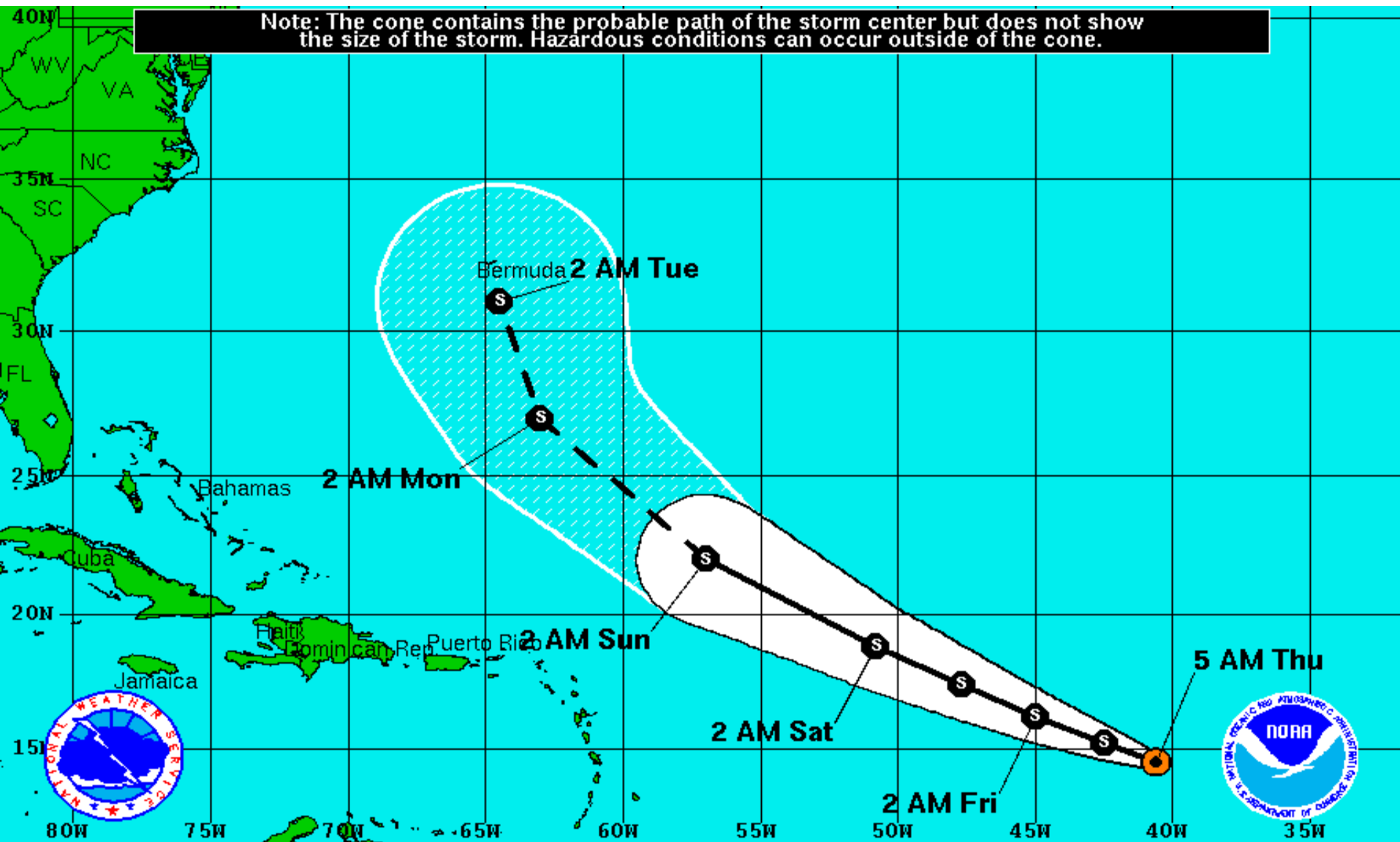
Satellite 9:44 AM UTC  
5:44 AM EDT




wunderground.com





Note: The cone contains the probable path of the storm center but does not show the size of the storm. Hazardous conditions can occur outside of the cone.


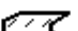


**Tropical Depression Ten**  
 Thursday August 23, 2012  
 5 AM EDT Advisory 4  
 NWS National Hurricane Center

**Current Information:**   
 Center Location 14.5 N 40.6 W  
 Max Sustained Wind 35 mph  
 Movement WNW at 16 mph

**Forecast Positions:**  
 Tropical Cyclone  Post-Tropical  
 Sustained Winds: D < 39 mph  
 S 39-73 mph H 74-110 mph M > 110mph

**Potential Track Area:**

 Day 1-3  Day 4-5

**Watches:**

 Hurricane  Trop.Storm

**Warnings:**

 Hurricane  Trop.Storm

**Depression Ten #4**

**August 23, 2012**

**5 AM EDT Thursday**

Current Location 14.5 N 40.6 W

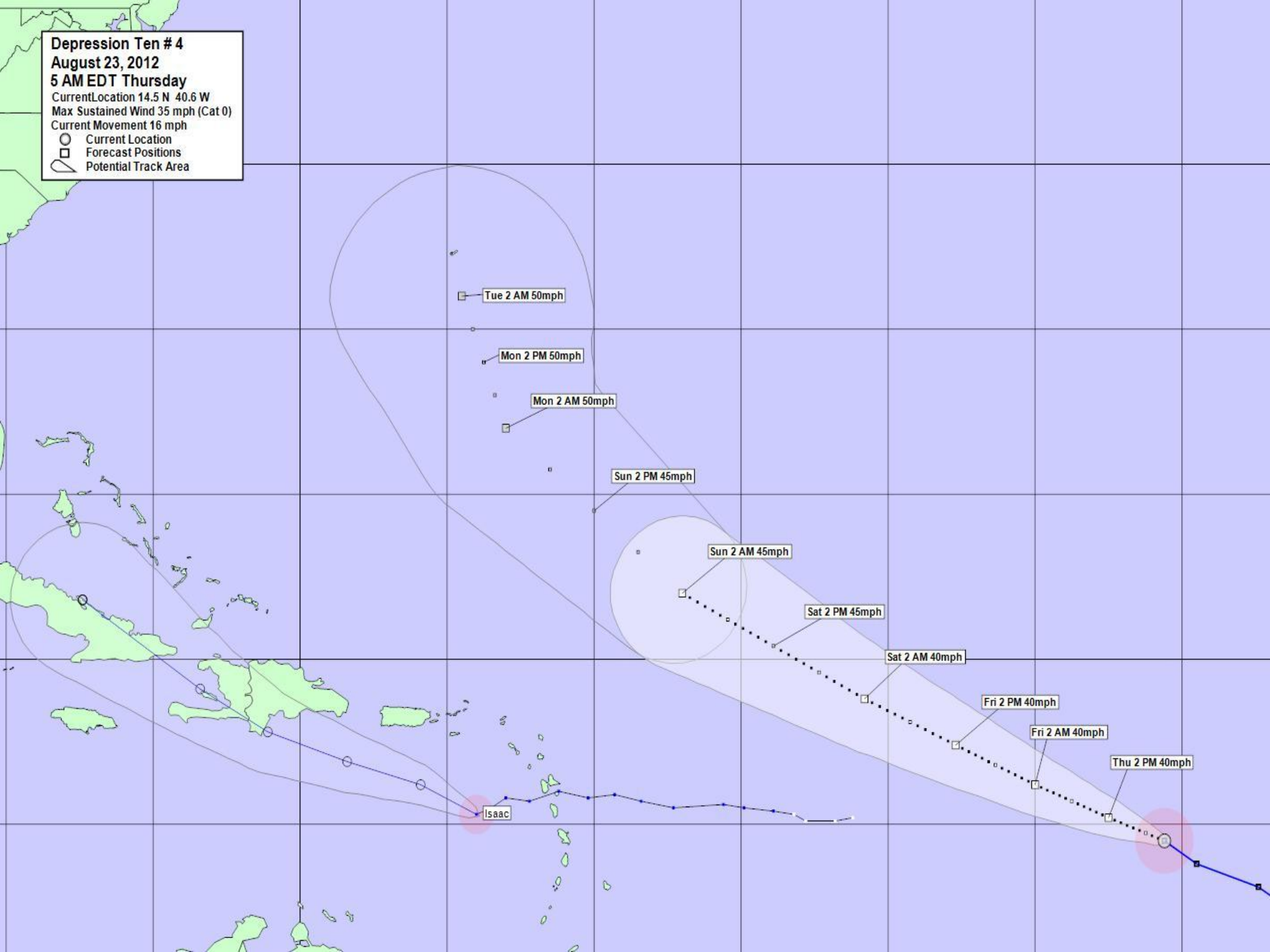
Max Sustained Wind 35 mph (Cat 0)

Current Movement 16 mph

○ Current Location

□ Forecast Positions

△ Potential Track Area

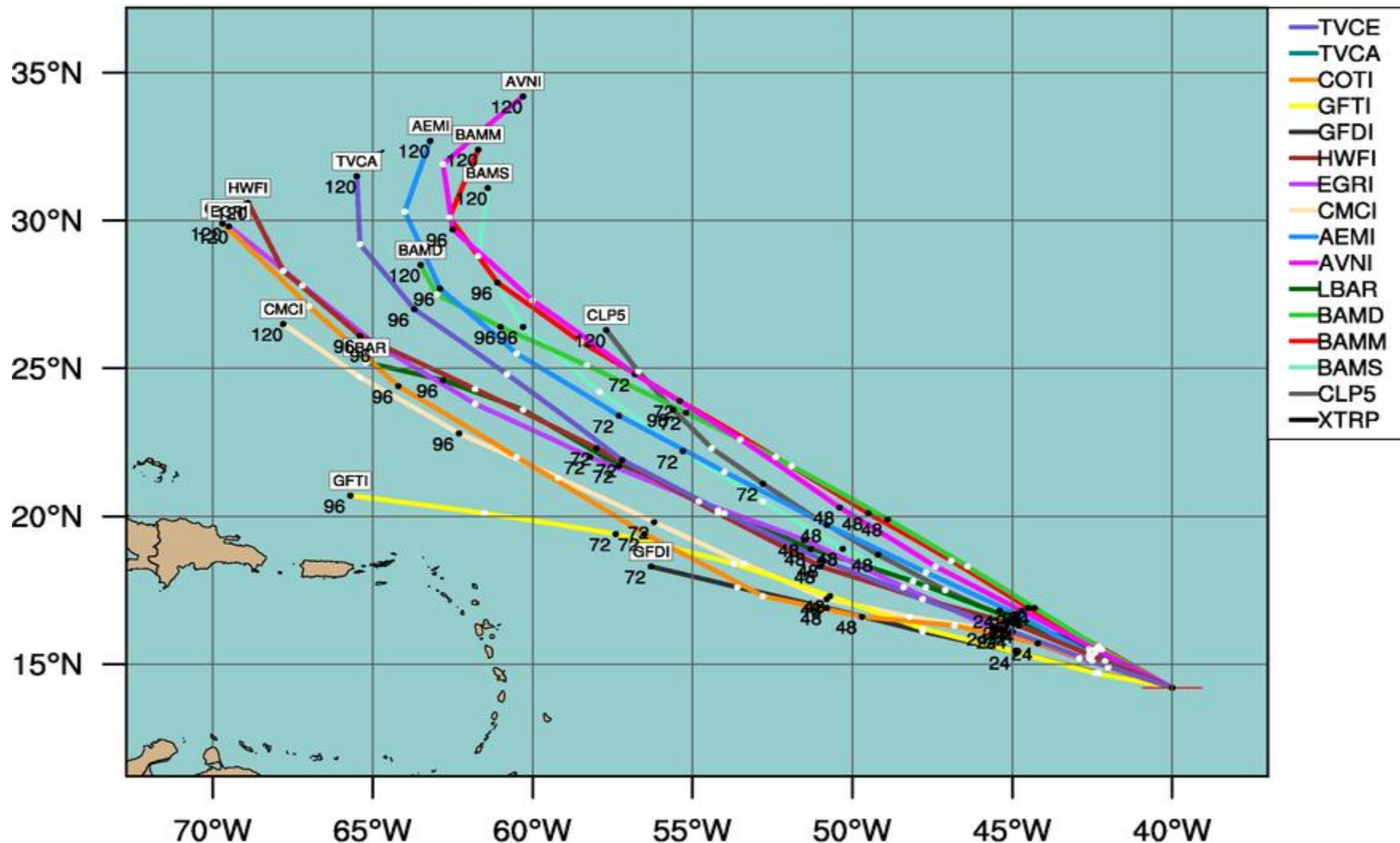


# TROPICAL DEPRESSION TEN (AL10)

Early-cycle track guidance initialized at 0600 UTC, 23 August 2012

Current Intensity: 30 kt

Current Basin: North Atlantic

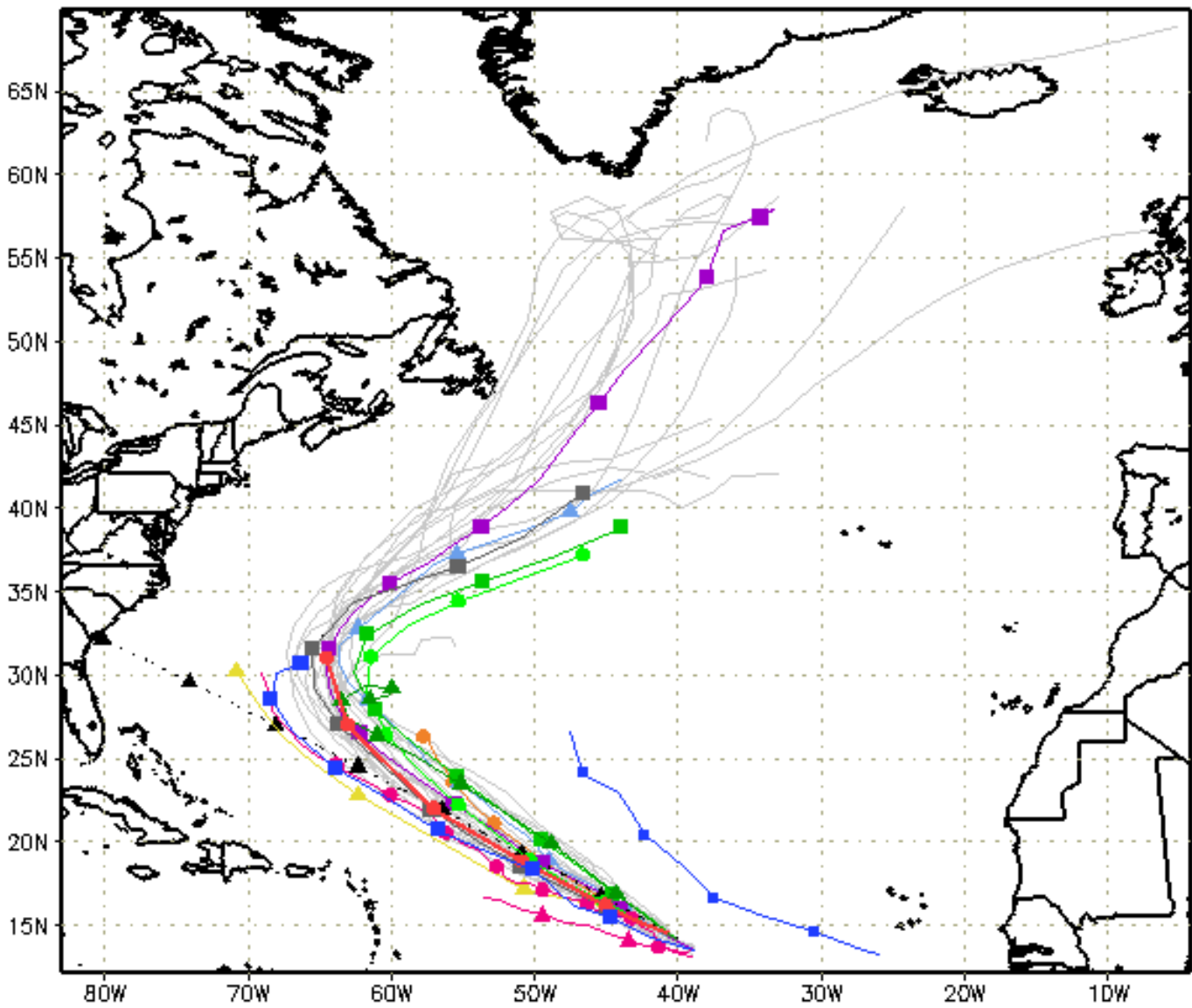


By using this plot, the user agrees to the UCAR Terms of Use  
which can be accessed at: <http://www2.ucar.edu/terms-of-use>

Plot generated at 0752 UTC 23 August 2012



---▲--- XTRP 23/0600Z	▲ BAMD 23/0600Z	▲ GFDL 23/0000Z	▲ AVNO 23/0000Z	▲ CMC 23/0600Z
■ TVCN 23/0600Z	■ BAMB 23/0600Z	■ UKM 23/0000Z	■ AEMN 23/0000Z	■ APxx 23/0000Z
● NHC 23/0900Z	● BAMS 23/0600Z	● NGPS Not Avail	● HWRF 23/0000Z	● GLP5 23/0600Z



storm\_10  
 sfwmd.gov  
 weather@sfwmd.gov  
 23-Aug 05:51 EDT

NHC Advisories and County Emergency Management Statements supersede this product. This graphic should complement, not replace, NHC discussions. If anything on this graphic causes confusion, ignore the entire product. For full info, see <http://my.sfwmd.gov/sfwmd/common/images/weather/plots.html>

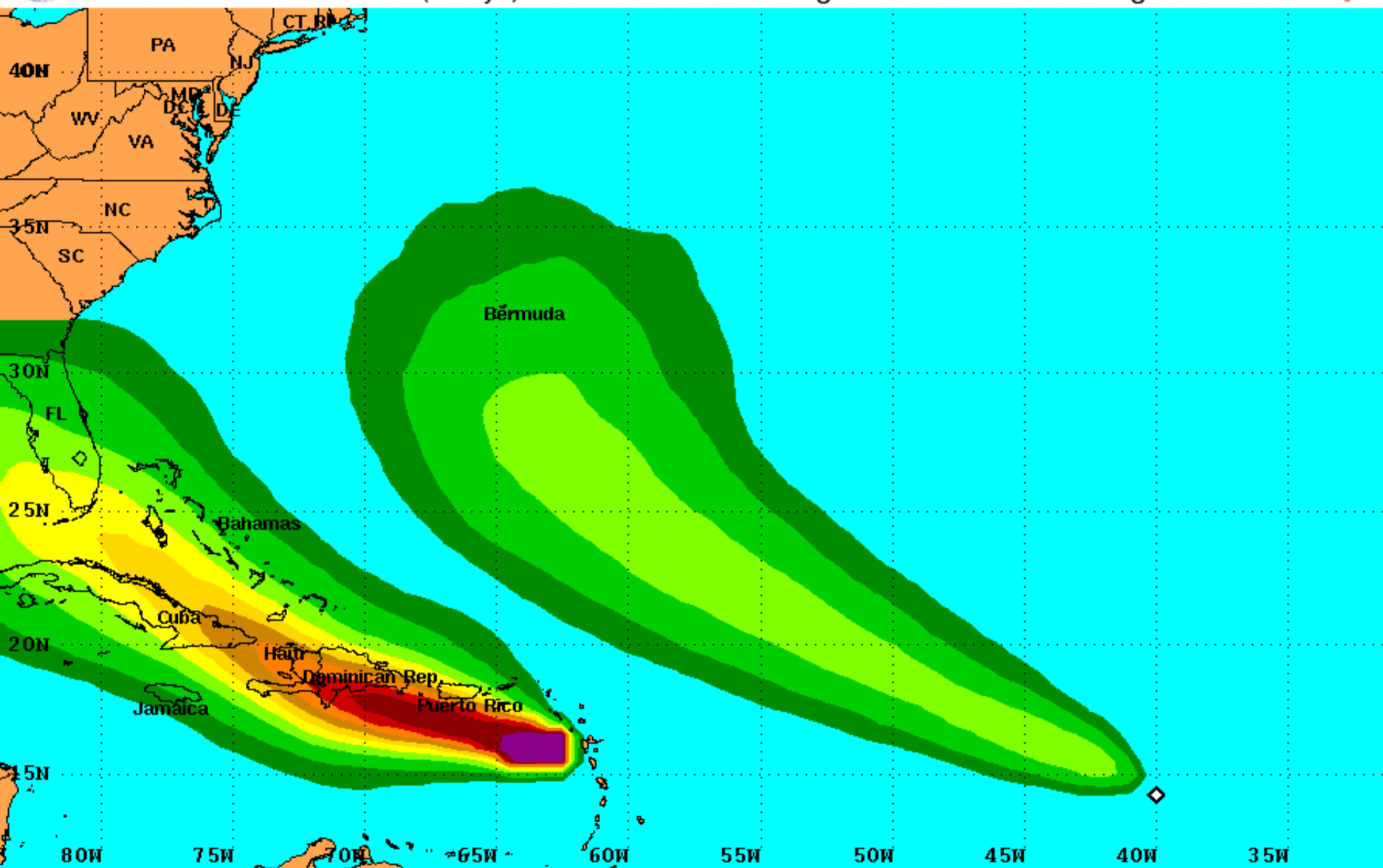






# Tropical Storm Force Wind Speed Probabilities

For the 120 hours (5 days) from 2 AM AST Thu Aug 23 to 2 AM AST Tue Aug 28



Probability of tropical storm force surface winds (1-minute average  $\geq 39$  mph) from all tropical cyclones

◇ indicates TROPICAL DEPRESSION TEN center location at 2 AM AST Thu Aug 23 2012 (Forecast/Advisory #4)







Intensity (Maximum Wind Speed) Probability Table  
Tropical Depression Ten Advisory Number 4  
5:00 AM AST Aug 23 2012



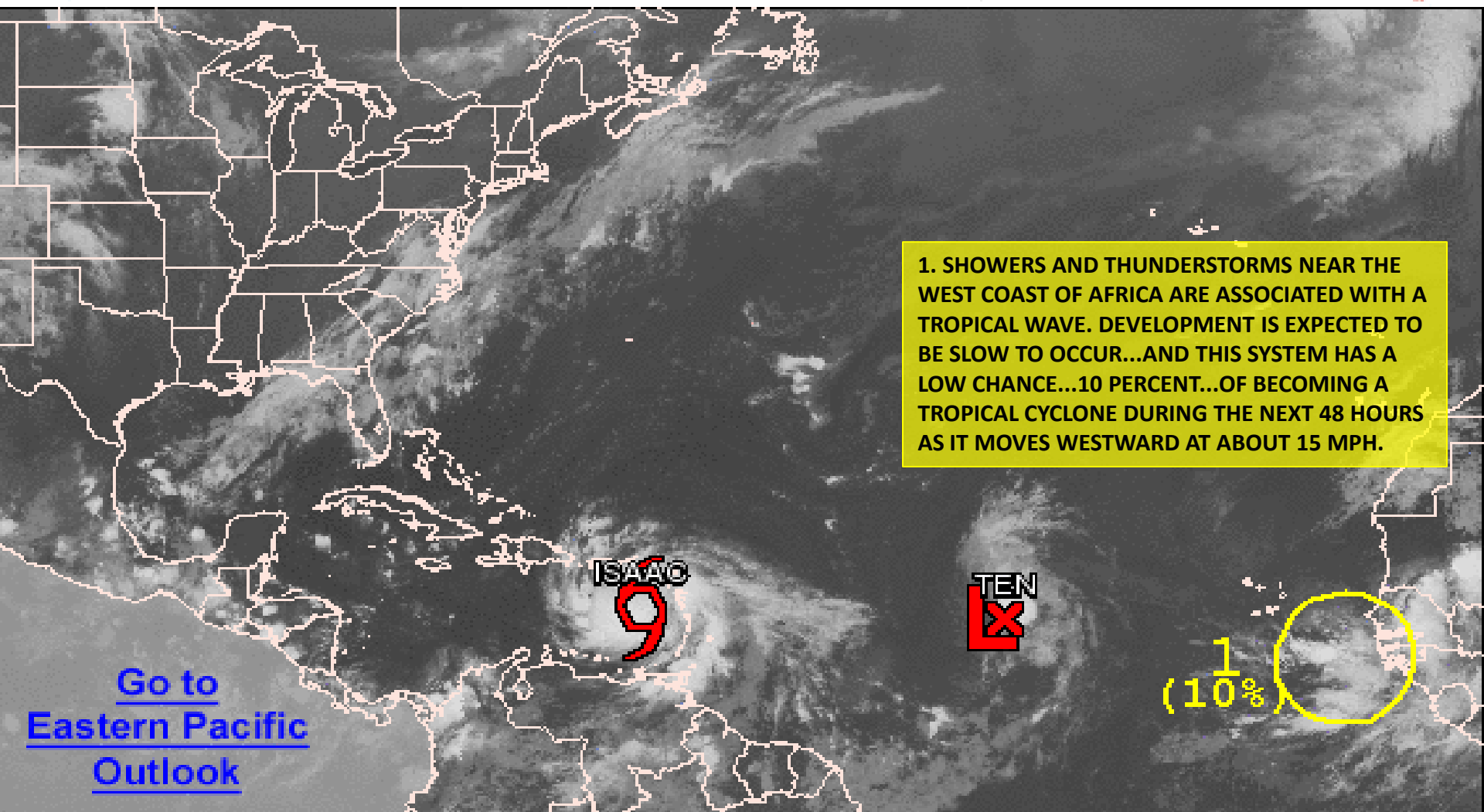
Wind Range (mph)	Forecast Time						
	12 hour for 2 PM Thu	24 hour for 2 AM Fri	36 hour for 2 PM Fri	48 hour for 2 AM Sat	72 hour for 2 AM Sun	96 hour for 2 AM Mon	120 hour for 2 AM Tue
Dissipated	2%	4%	8%	11%	8%	6%	8%
Tropical Depression (<39)	33%	38%	36%	33%	24%	21%	24%
Tropical Storm (39-73)	64%	55%	52%	50%	56%	56%	52%
Hurricane (all categories)	1%	3%	4%	6%	12%	17%	16%
-- Category 1 (74-95)	1%	3%	4%	6%	10%	14%	14%
-- Category 2 (96-110)	<1%	<1%	1%	1%	2%	2%	2%
-- Category 3 (111-130)	<1%	<1%	<1%	<1%	<1%	1%	<1%
-- Category 4 (131-155)	<1%	<1%	<1%	<1%	<1%	<1%	<1%
-- Category 5 (>155)	<1%	<1%	<1%	<1%	<1%	<1%	<1%
Forecast Maximum Wind	40 mph	40 mph	40 mph	40 mph	45 mph	50 mph	50 mph



# Graphical Tropical Weather Outlook

National Hurricane Center

Miami, Florida



[Go to  
Eastern Pacific  
Outlook](#)

200 AM EDT THU AUG 23 2012

Satellite Image: 0122 AM EDT

Outlined areas denote current position of systems discussed in the Tropical Weather Outlook. Color indicates probability of tropical cyclone formation within 48 hours.

 Low <30%

 Medium 30-50%

 High >50%

# *Forecast Total Rainfall Accumulations (Thursday Through Monday)*

