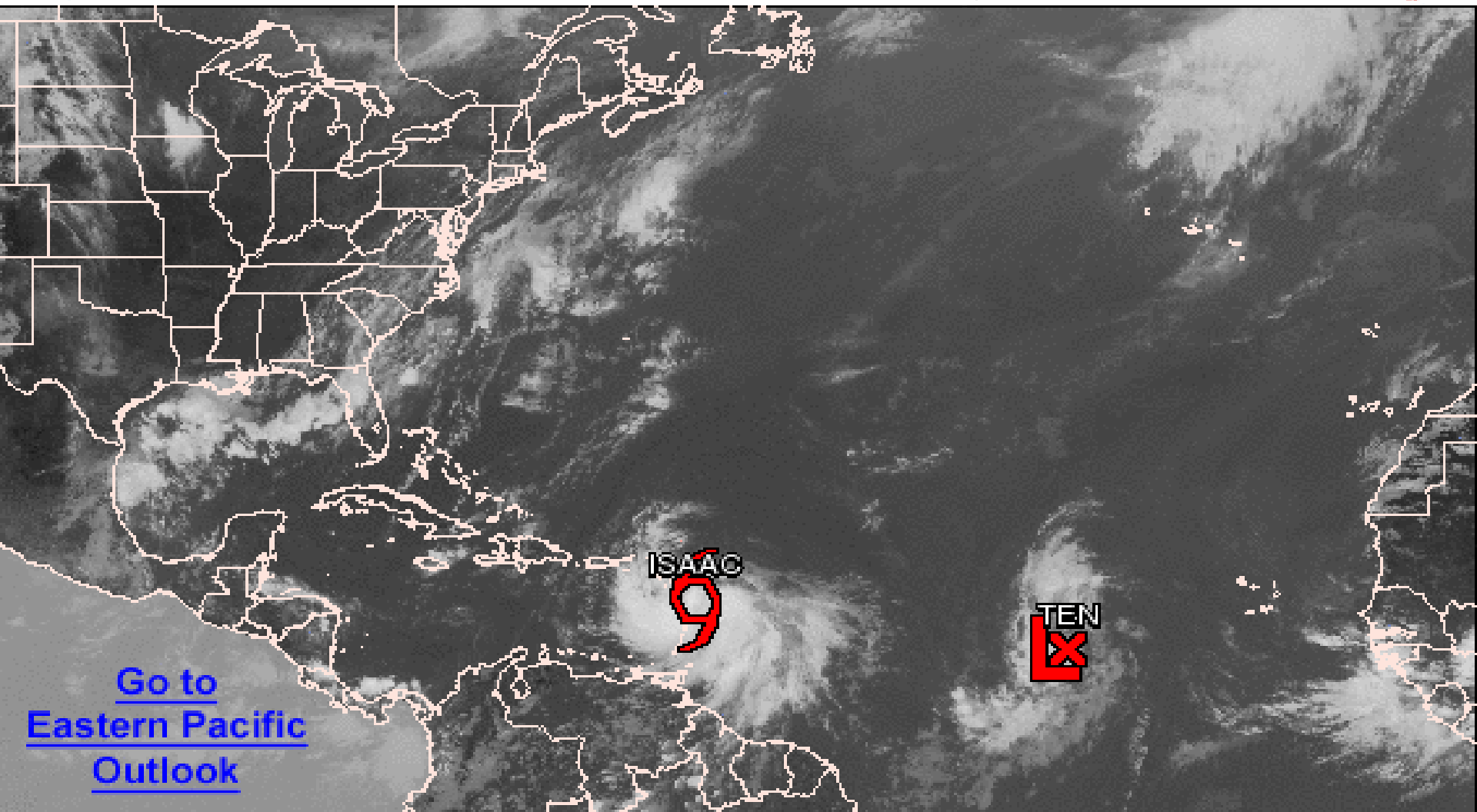




# Graphical Tropical Weather Outlook

National Hurricane Center Miami, Florida



[Go to  
Eastern Pacific  
Outlook](#)

200 PM EDT WED AUG 22 2012

Satellite Image: 0122 PM EDT

Outlined areas denote current position of systems discussed in the Tropical Weather Outlook. Color indicates probability of tropical cyclone formation within 48 hours.

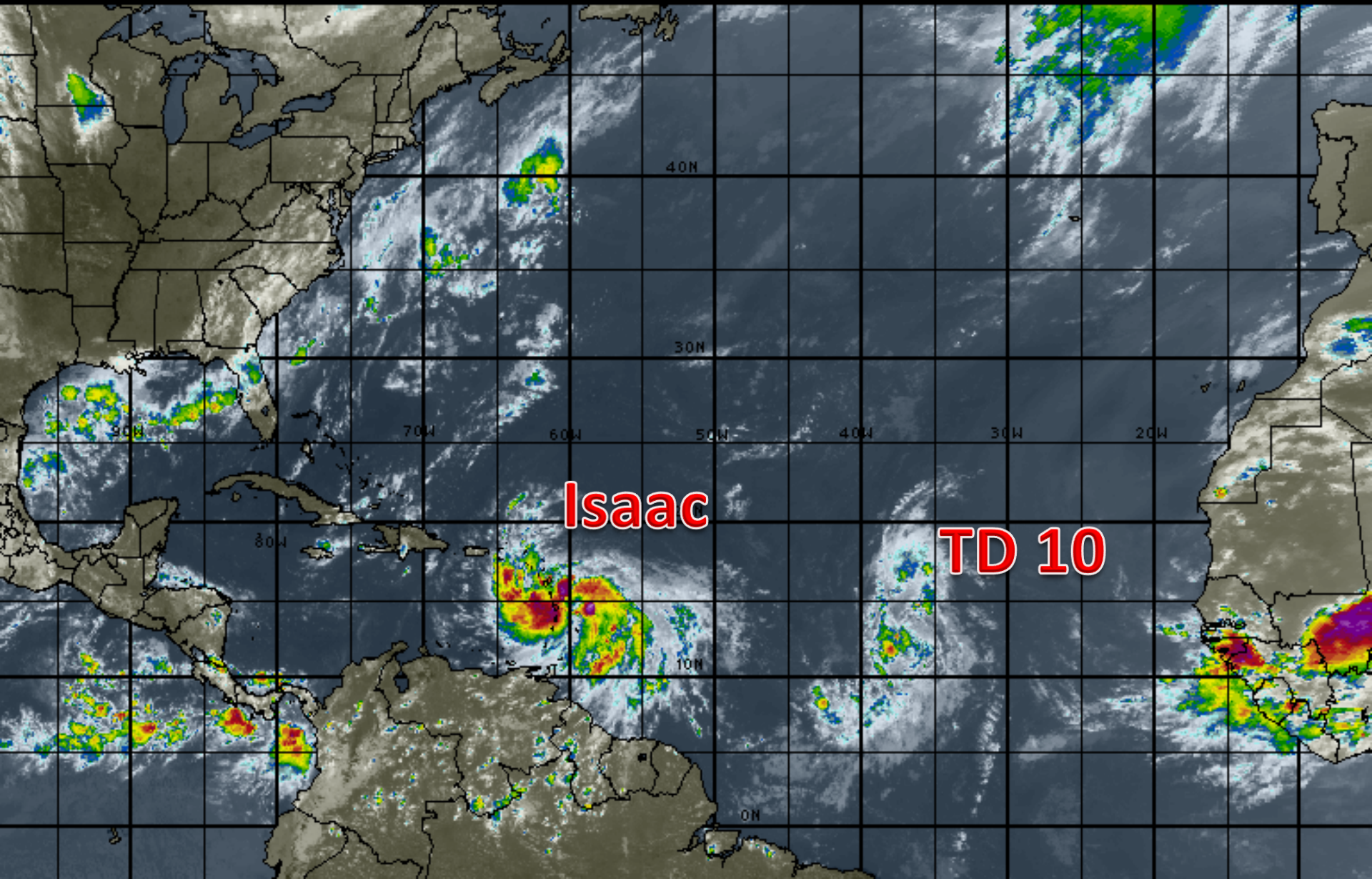
 Low <30%

 Medium 30-50%

 High >50%

# Atlantic Basin Satellite Image

18:00 22-AUG-2012 GMT ©Copyright WSI Corporation <http://www.wsi.com>





# Tropical Storm Isaac

2 PM EDT Wed Aug 22/2012

Position 15.8 N 60.2 W

Maximum Winds 45 mph

Gusts 55 mph

Movement W at 20 mph

Minimum Pressure 1006 mb (29.70 inches)

Blue Marble basemap imagery courtesy NASA

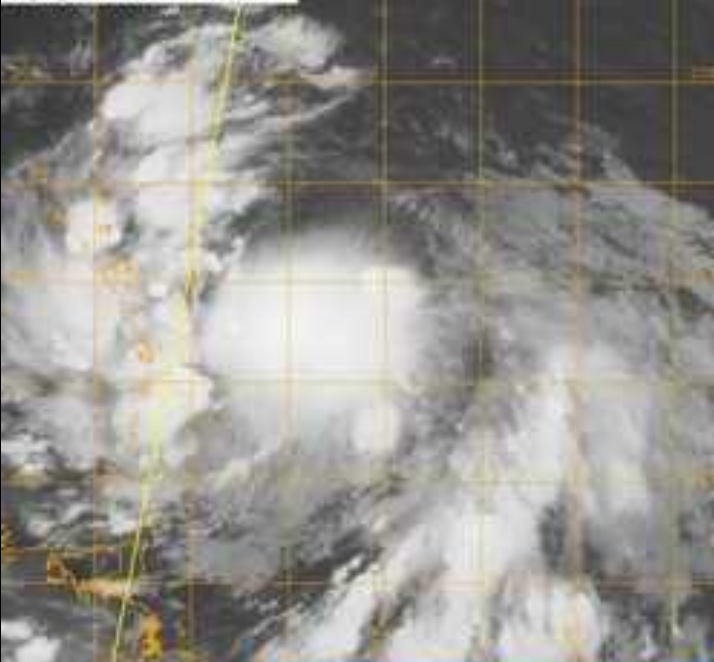
Satellite 6:12 PM UTC  
2:12 PM EDT



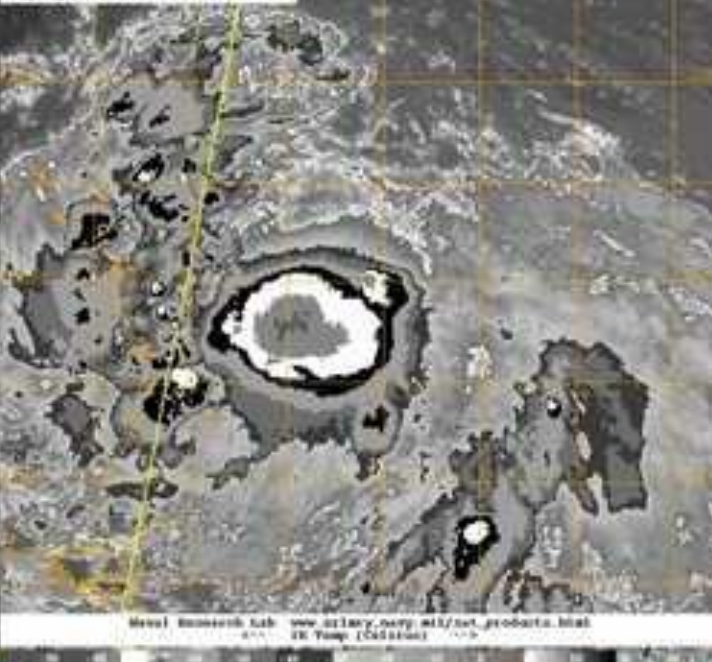
wunderground.com



08/22/12 0600Z OPL ISAAC  
08/22/12 0910Z F-17 OVERPASS  
08/22/12 0915Z OGSN-13 IR

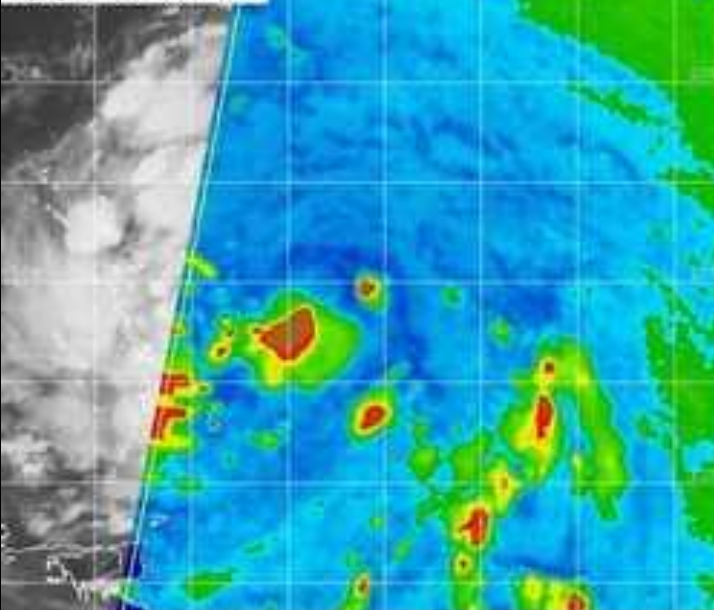


08/22/12 0600Z OPL ISAAC  
08/22/12 0910Z F-17 OVERPASS  
08/22/12 0915Z OGSN-13 IR-SD



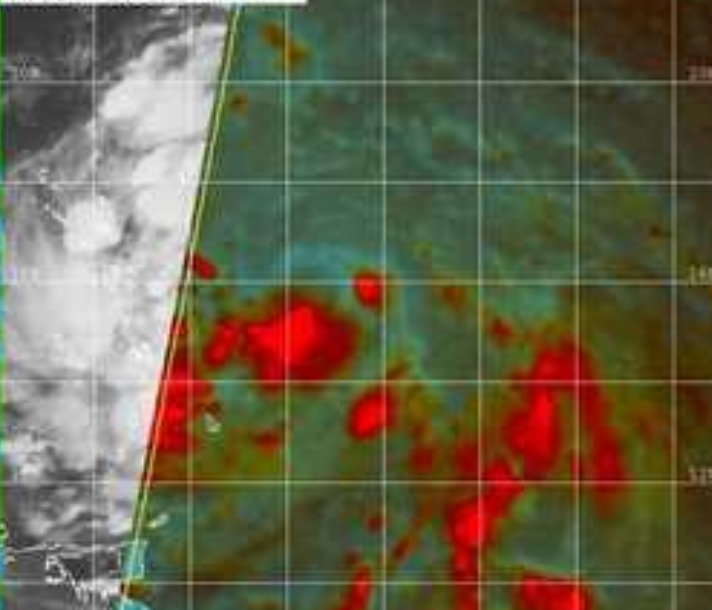
Naval Research Lab [www.nrlmry.navy.mil/out\\_products.html](http://www.nrlmry.navy.mil/out_products.html)  
IR Temp (Kelvin) -->

08/22/12 0600Z OPL ISAAC  
08/22/12 0910Z F-17 31M  
08/22/12 0915Z OGSN-13 IR



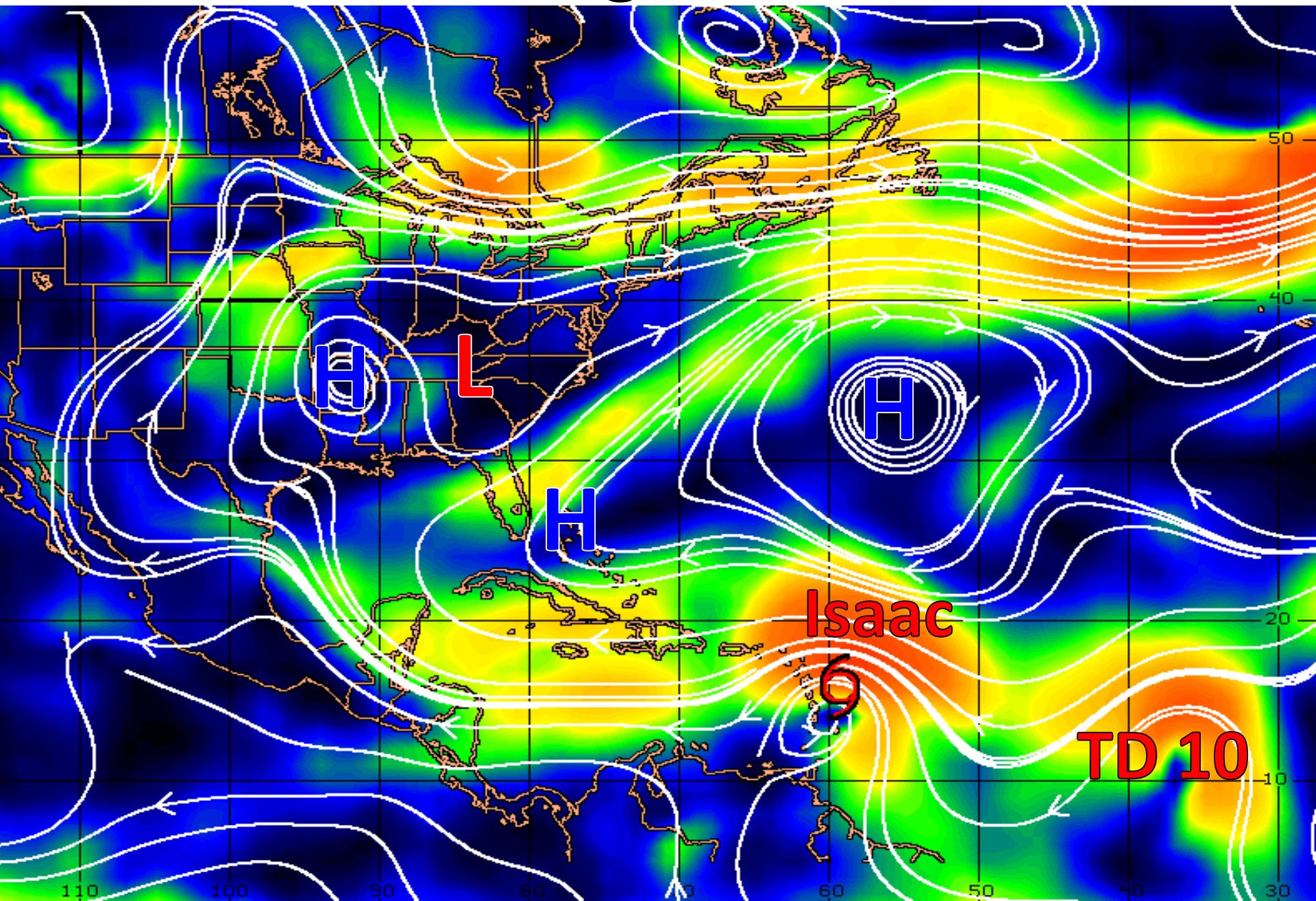
Naval Research Lab [www.nrlmry.navy.mil/out\\_products.html](http://www.nrlmry.navy.mil/out_products.html)  
31M Brightness Temp (Kelvin) -->

08/22/12 0600Z OPL ISAAC  
08/22/12 0910Z F-17 COMPOSITE  
08/22/12 0915Z OGSN-13 IR

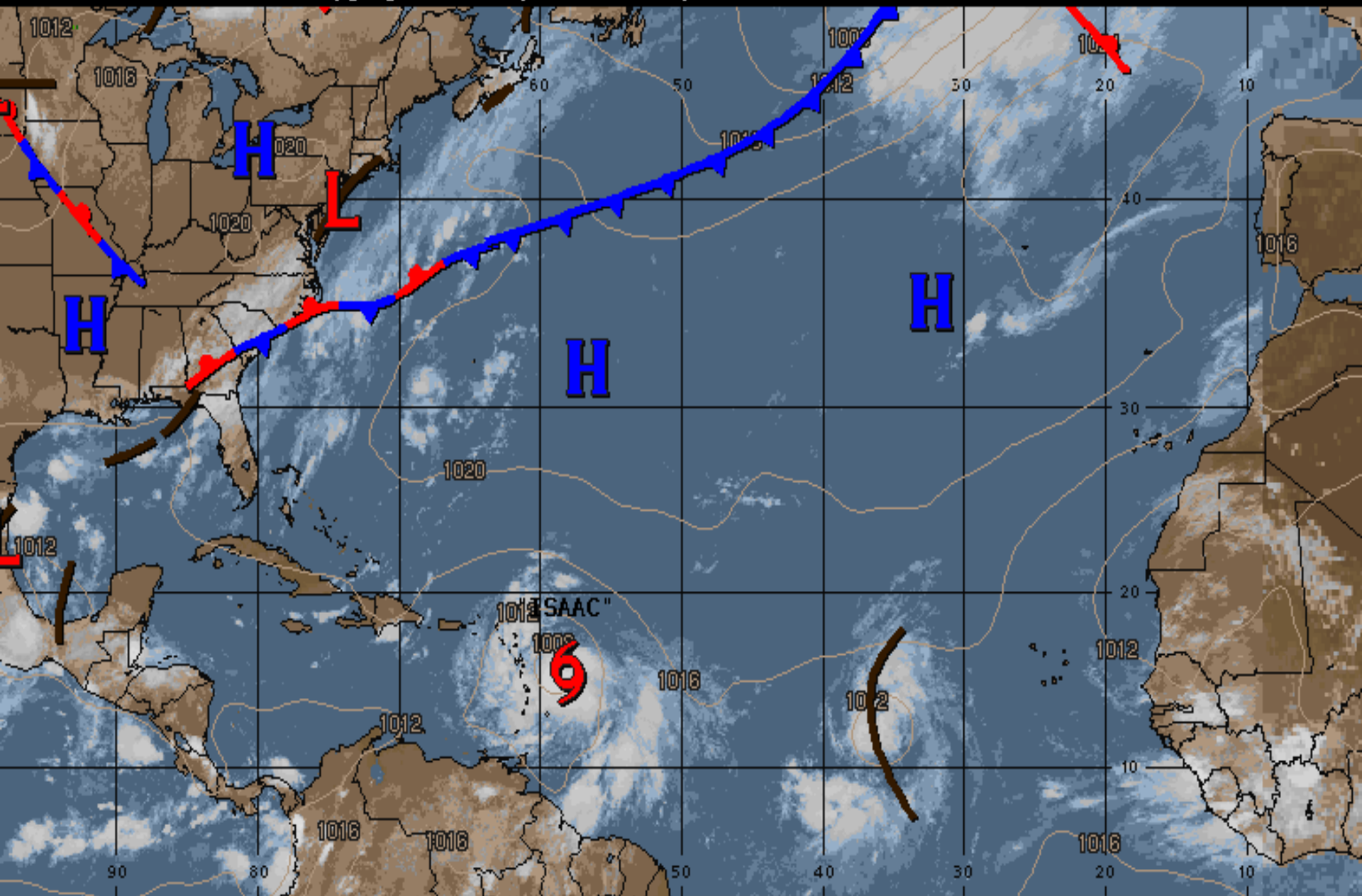


Naval Research Lab [www.nrlmry.navy.mil/out\\_products.html](http://www.nrlmry.navy.mil/out_products.html)  
Red-31M - Green-31M Blue-31M

# Steering Currents







# TROPICAL SURFACE ANALYSIS

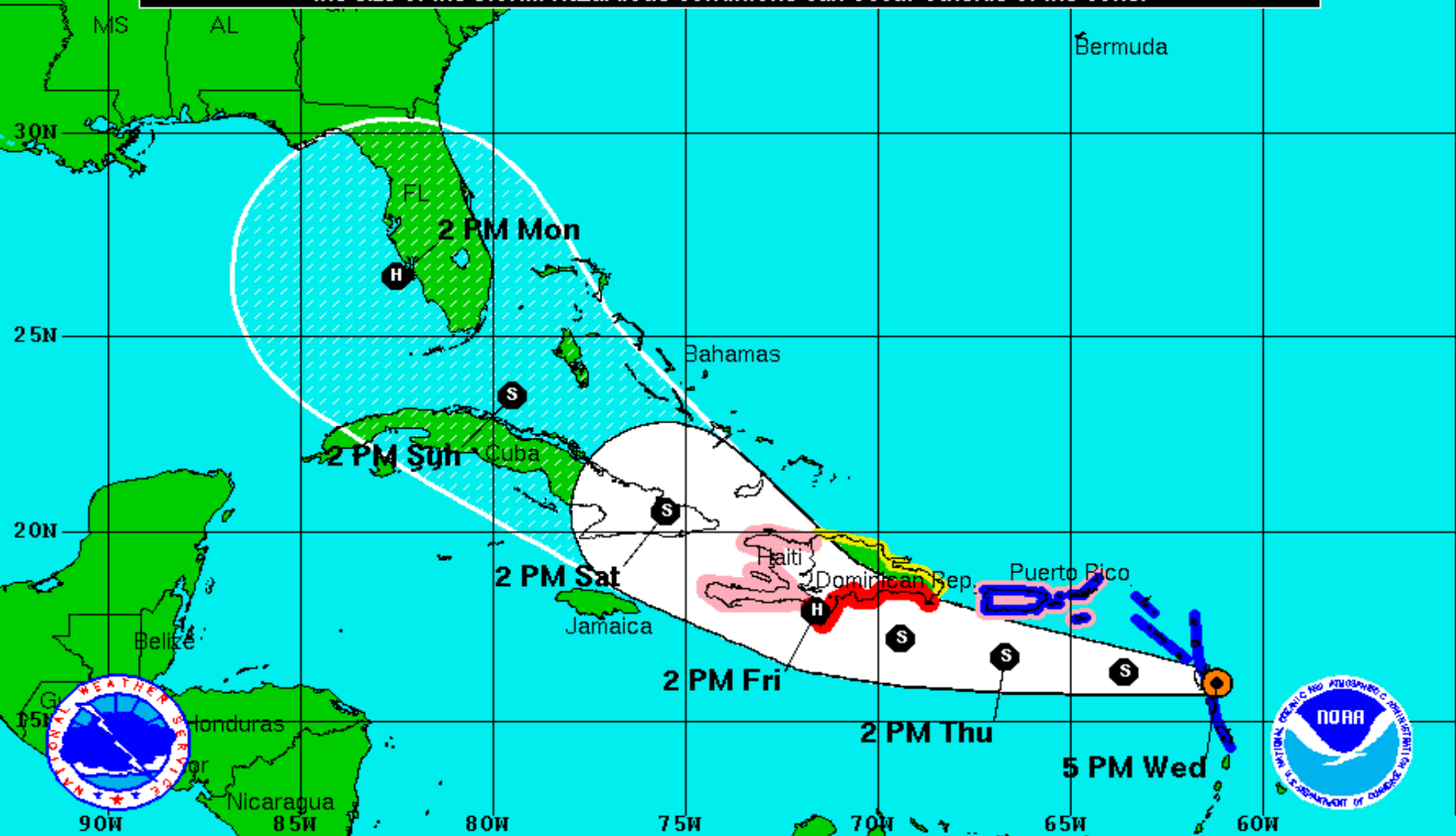
Valid 7 AM ET 22-Aug-12

WAVE DEPRESSION STORM HURRICANE


L





Note: The cone contains the probable path of the storm center but does not show the size of the storm. Hazardous conditions can occur outside of the cone.



**Tropical Storm Isaac**  
 Wednesday August 22, 2012  
 5 PM EDT Advisory 7  
 NWS National Hurricane Center

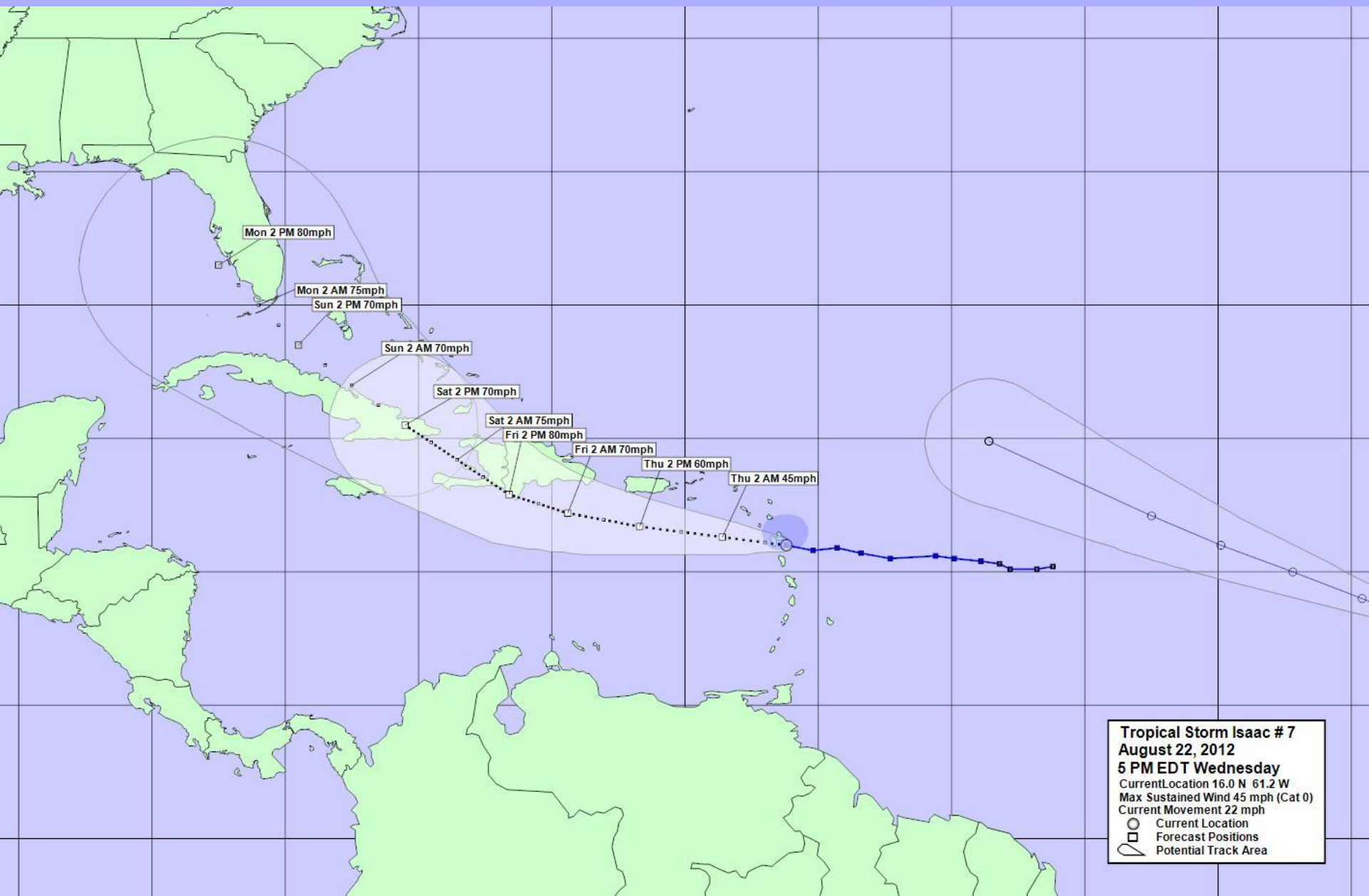
**Current Information:**   
 Center Location 16.0 N 61.2 W  
 Max Sustained Wind 45 mph  
 Movement W at 22 mph

**Forecast Positions:**  
 Tropical Cyclone  Post-Tropical  
 Sustained Winds: D < 39 mph  
 S 39-73 mph H 74-110 mph M > 110mph

**Potential Track Area:**  
 Day 1-3  Day 4-5

**Watches:**  
 Hurricane  Trop.Storm

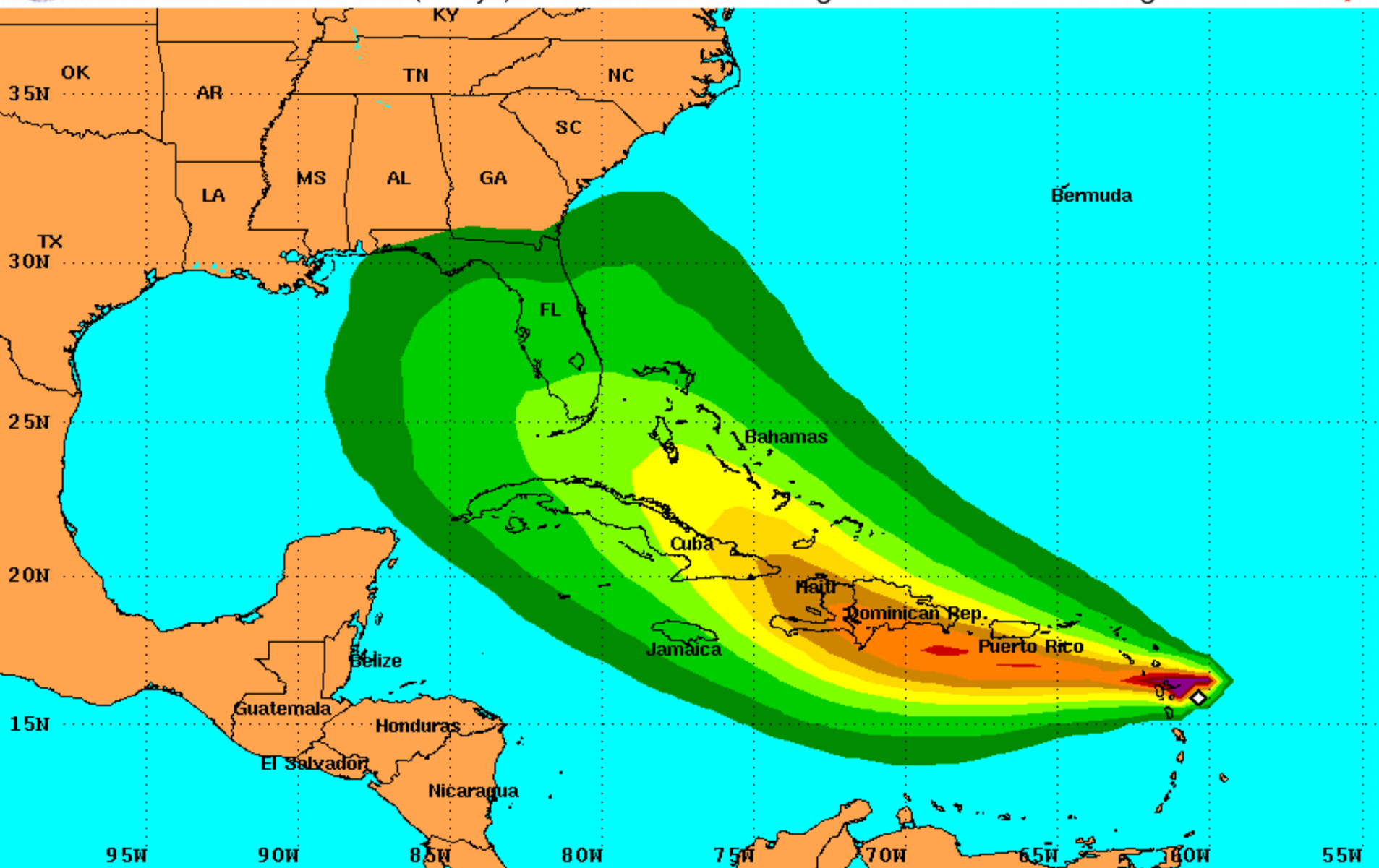
**Warnings:**  
 Hurricane  Trop.Storm







# PRELIMINARY (SINGLE STORM) Tropical Storm Force Wind Speed Probabilities For the 120 hours (5 days) from 2 PM AST Wed Aug 22 to 2 PM AST Mon Aug 27



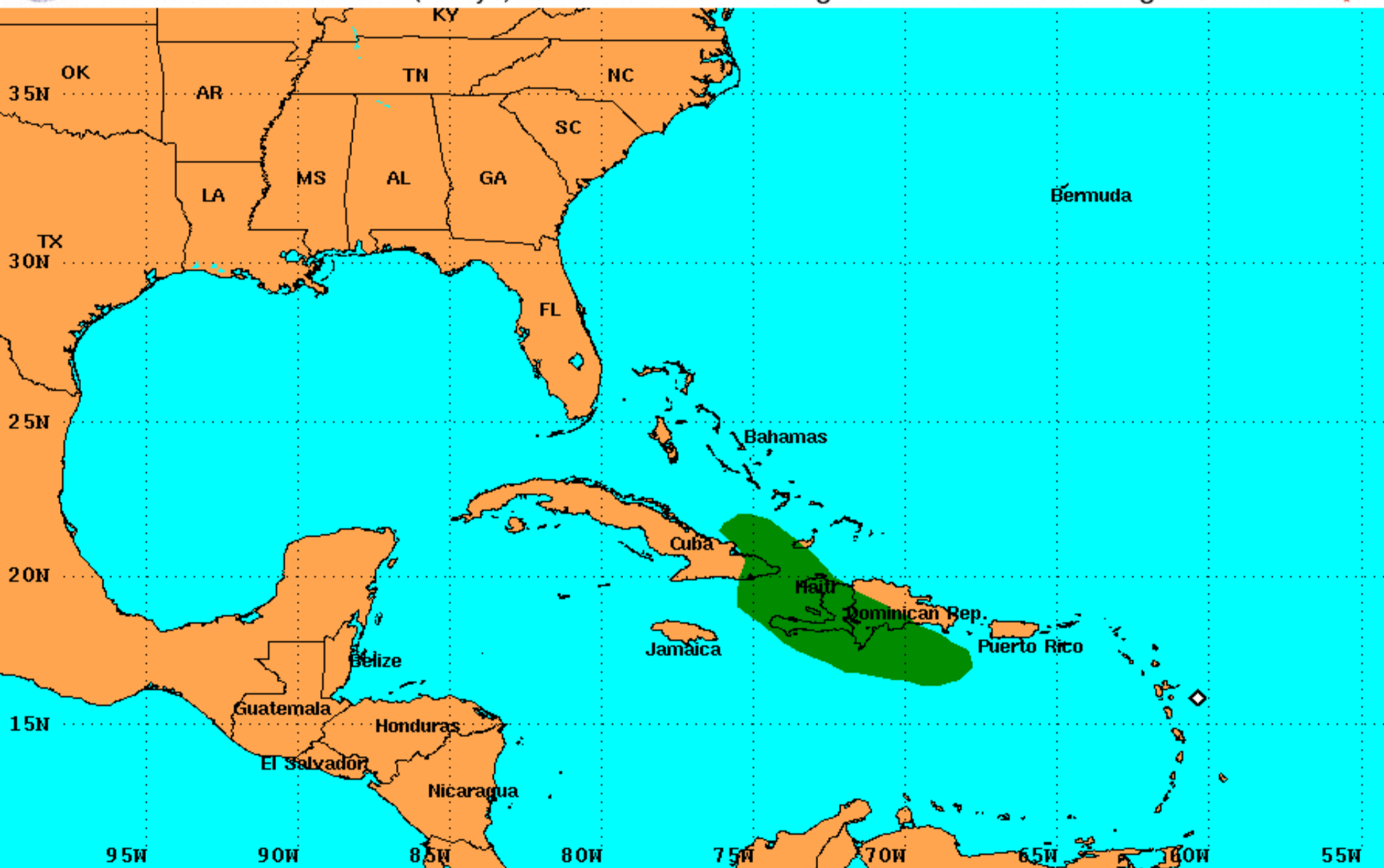
Probability of sustained tropical storm force surface winds (1-minute average of 39 mph or greater)

◆ indicates TROPICAL STORM ISAAC center location at 2 PM AST Wed Aug 22 2012 (Forecast/Advisory #7)





# PRELIMINARY (SINGLE STORM) Hurricane Force Wind Speed Probabilities For the 120 hours (5 days) from 2 PM AST Wed Aug 22 to 2 PM AST Mon Aug 27



Probability of sustained hurricane force surface winds (1-minute average of 74 mph or greater)

◇ indicates TROPICAL STORM ISAAC center location at 2 PM AST Wed Aug 22 2012 (Forecast/Advisory #7)



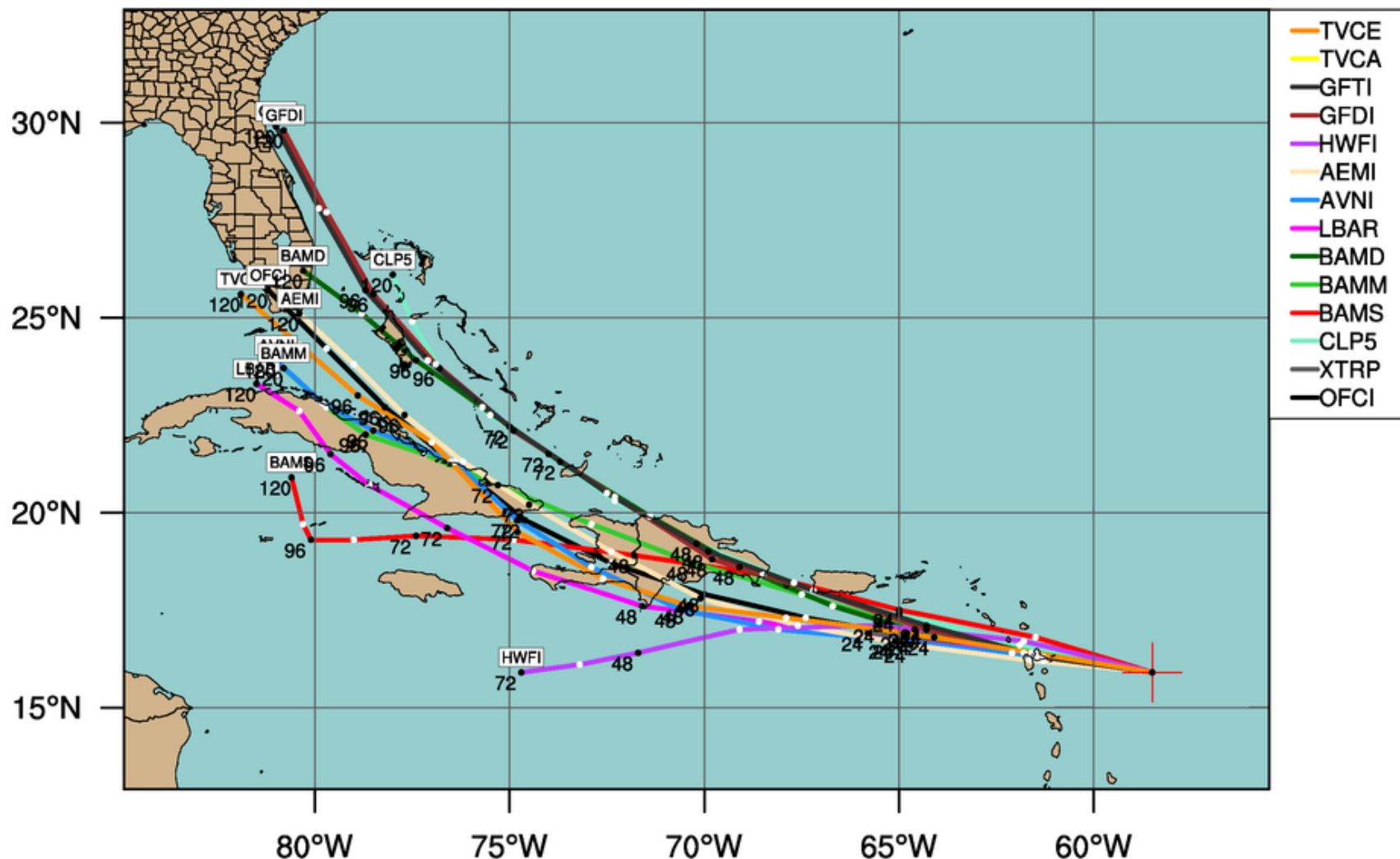


# TROPICAL STORM ISAAC (AL09)

Early-cycle track guidance initialized at 1200 UTC, 22 August 2012

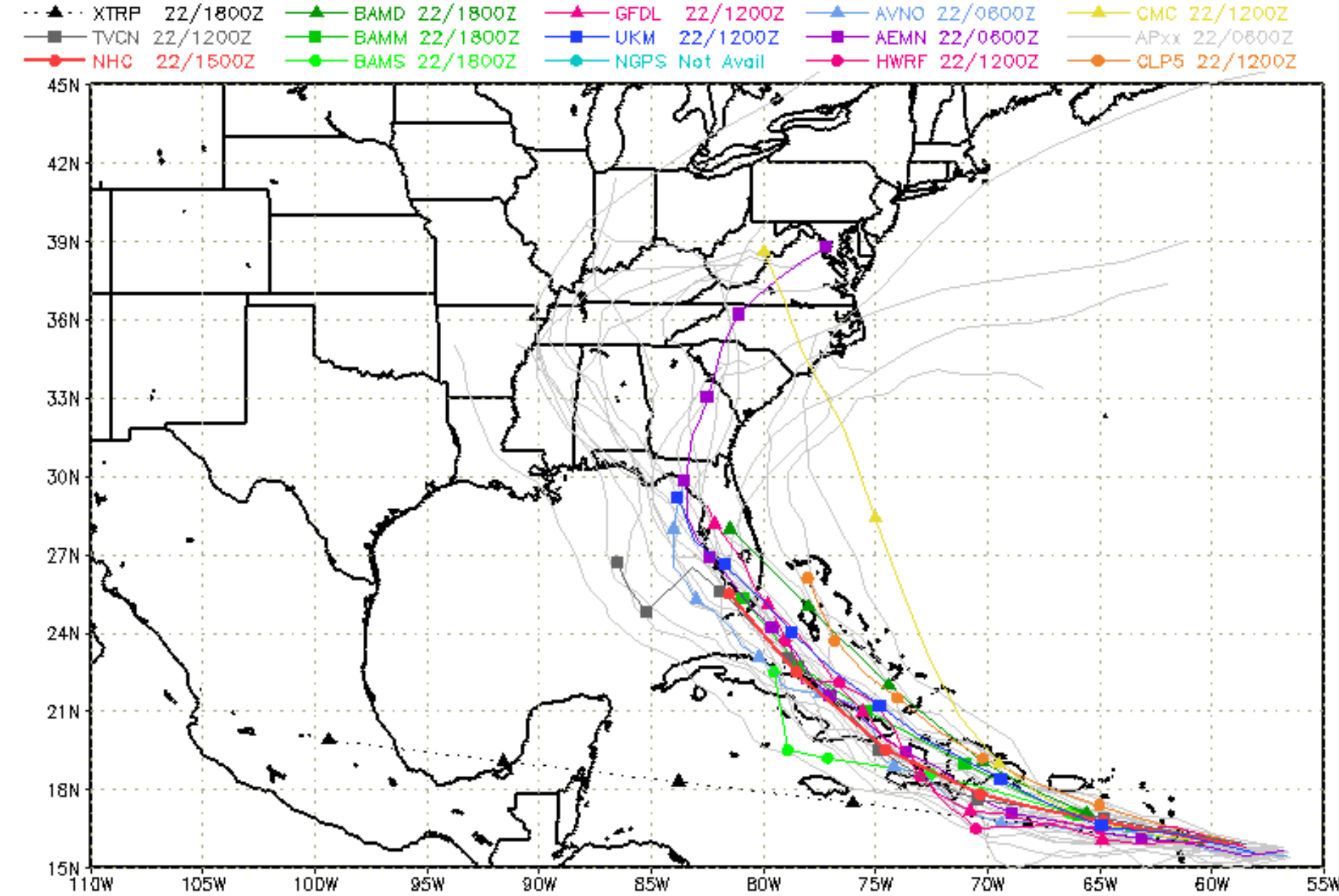
Current Intensity: 40 kt

Current Basin: North Atlantic



By using this plot, the user agrees to the UCAR Terms of Use  
which can be accessed at: <http://www2.ucar.edu/terms-of-use>

Plot generated at 1352 UTC 22 August 2012



storm\_09

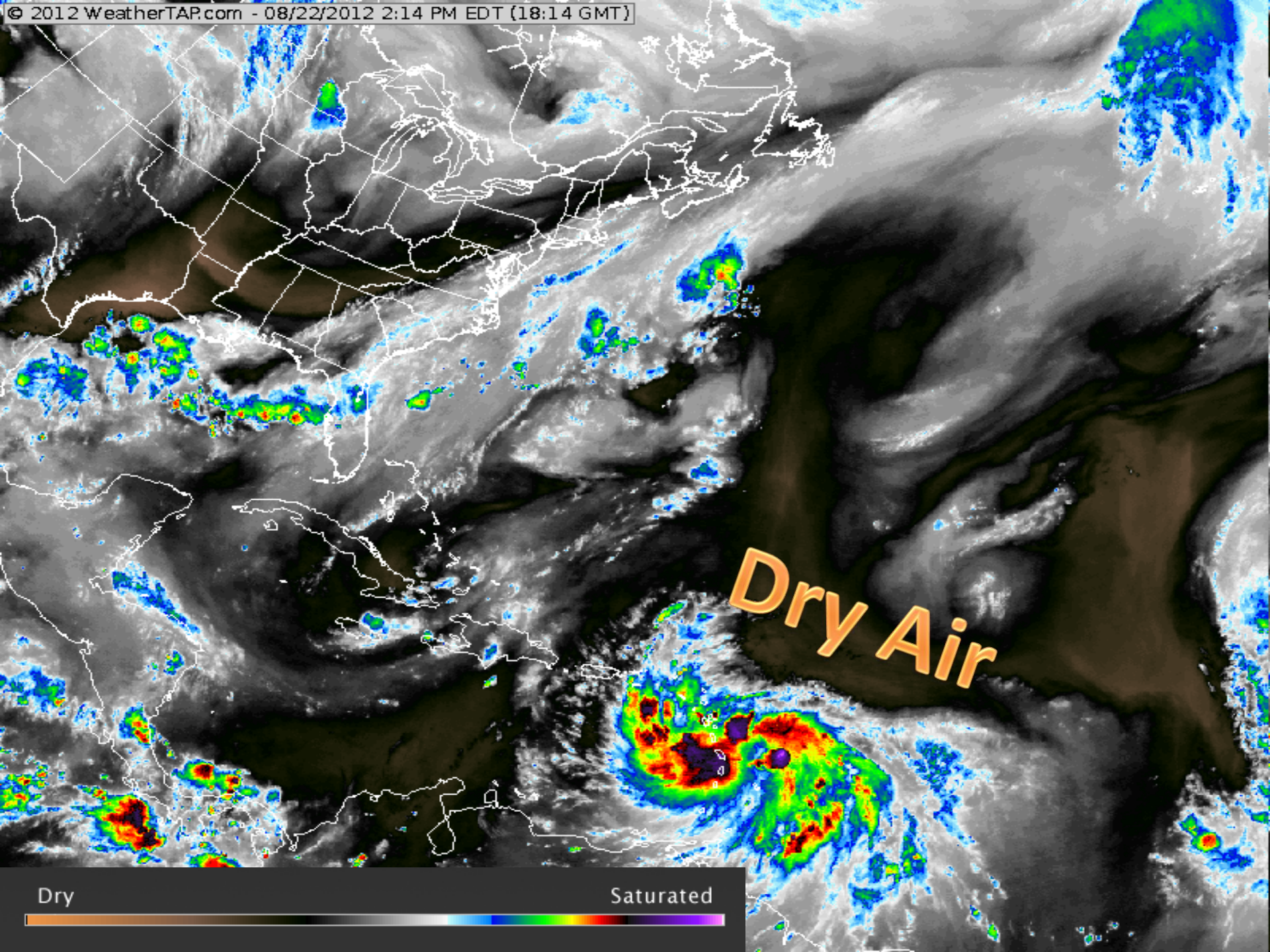
[sfwmd.gov](http://sfwmd.gov)

weather@sfwmd.gov  
22-Aug 16:06EDT

NHC Advisories and County Emergency Management Statements supersede this product.  
 This graphic should complement, not replace, NHC discussions.  
 If anything on this graphic causes confusion, ignore the entire product.  
 For full info, see <http://my.sfwmd.gov/sfwmd/common/images/weather/plots.html>

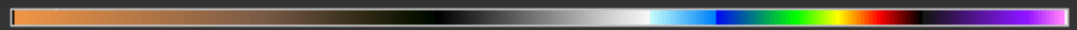






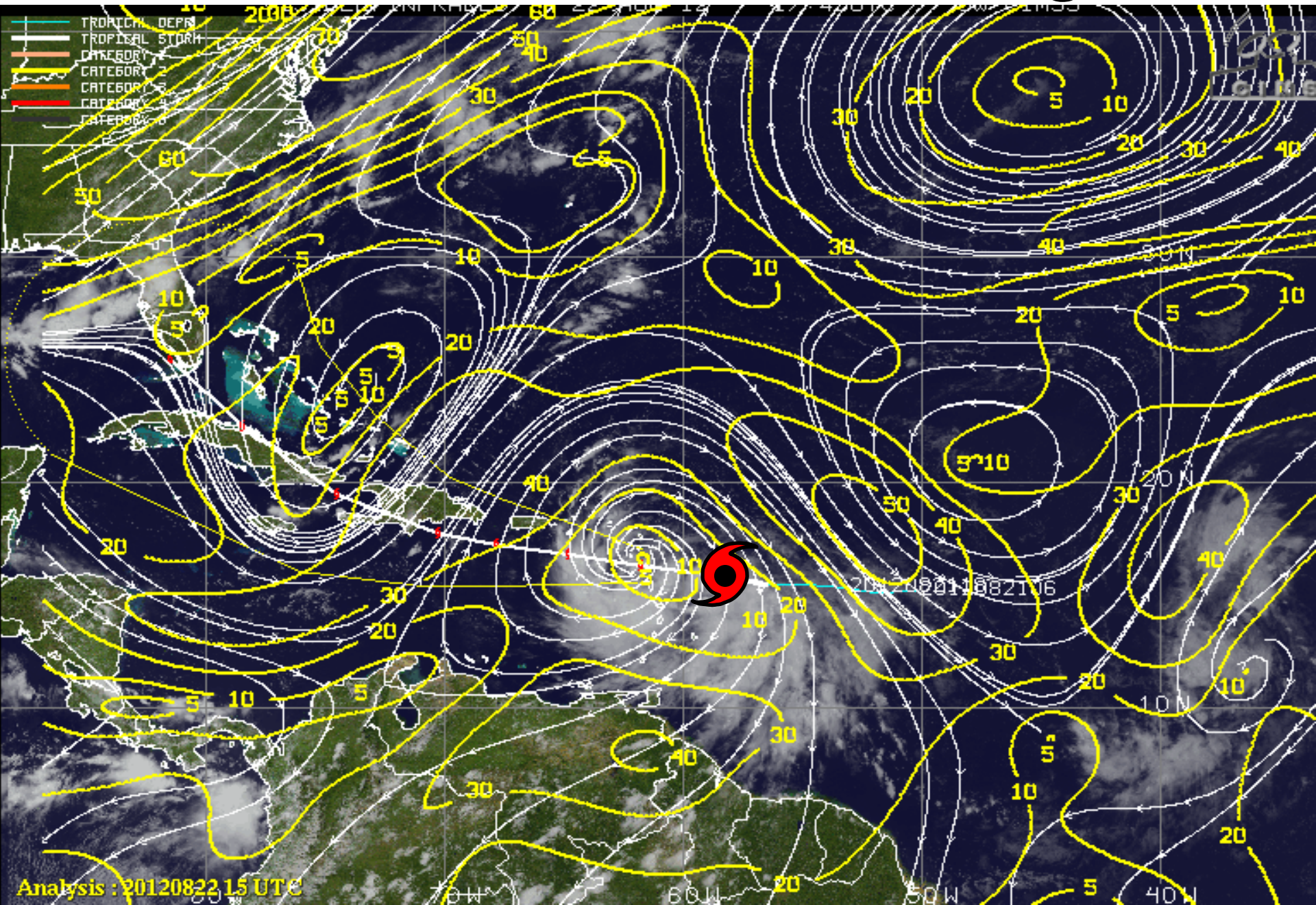
Dry

Saturated

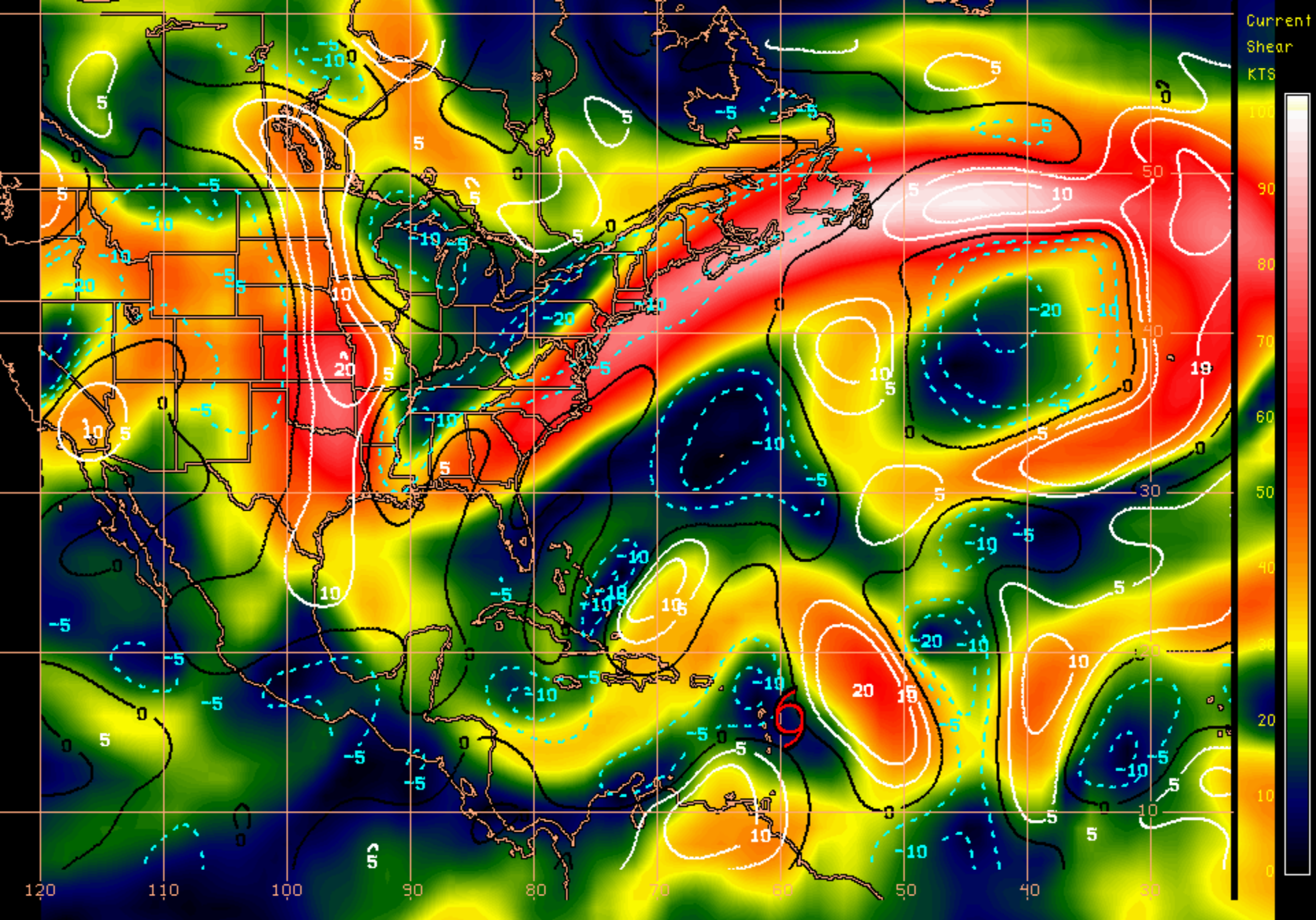




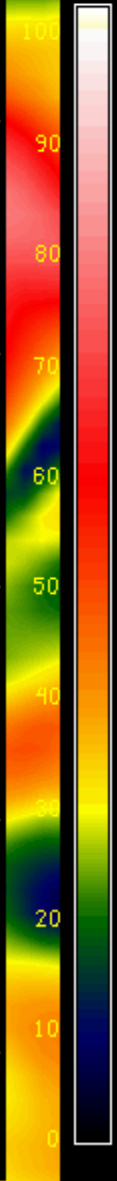
# Current Wind Shear Surrounding Isaac







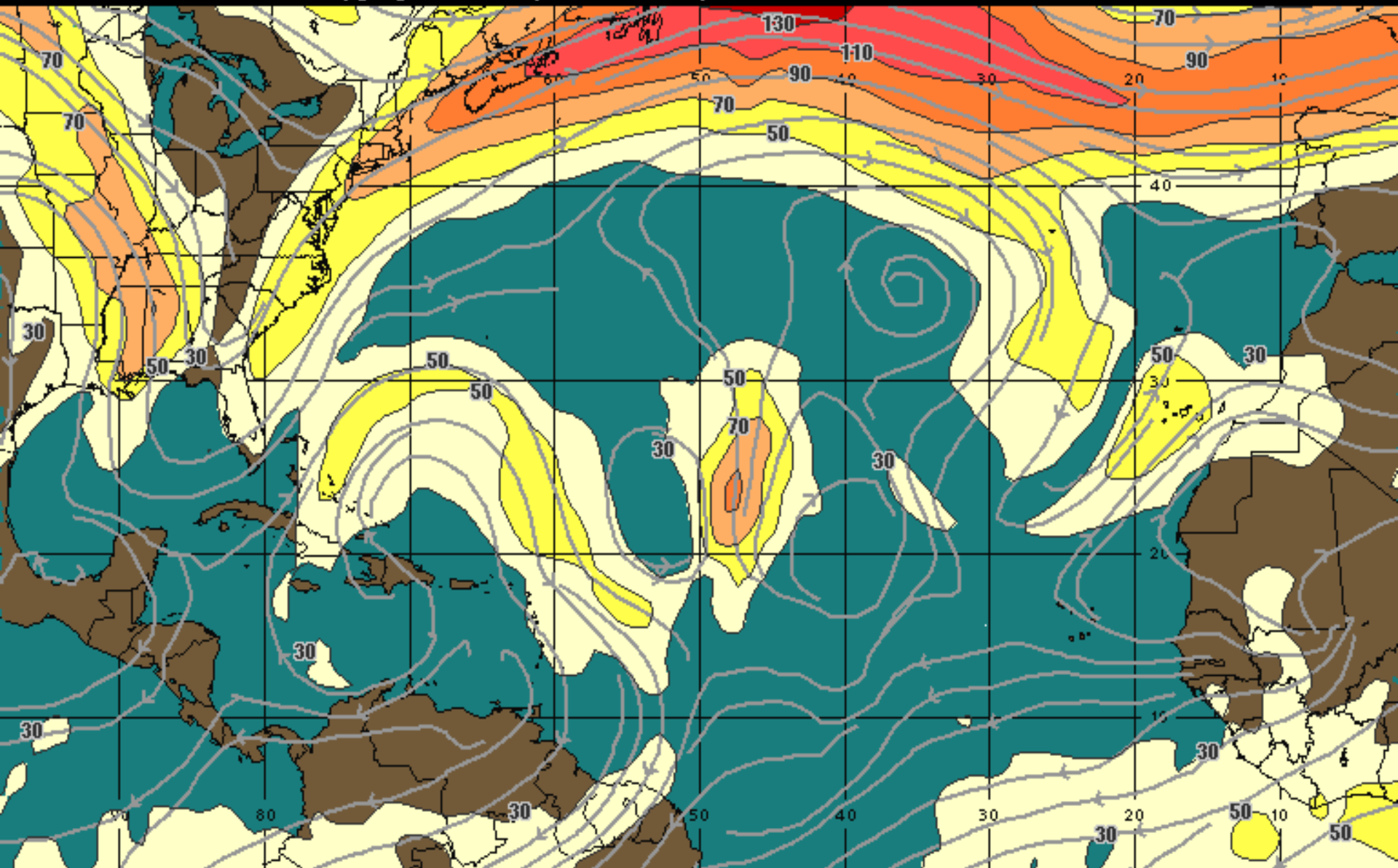
Current  
Shear  
KTS



Shear Tendency (KTS) Over Past 24 Hours: Increasing ——— Decreasing - - - -

# 36 Hour Forecast Wind Shear

12:00 24-AUG-2012 GMT ©Copyright WSI Corporation <http://www.wsi.com>



200Mb Wind Speed / Streamline Forecast

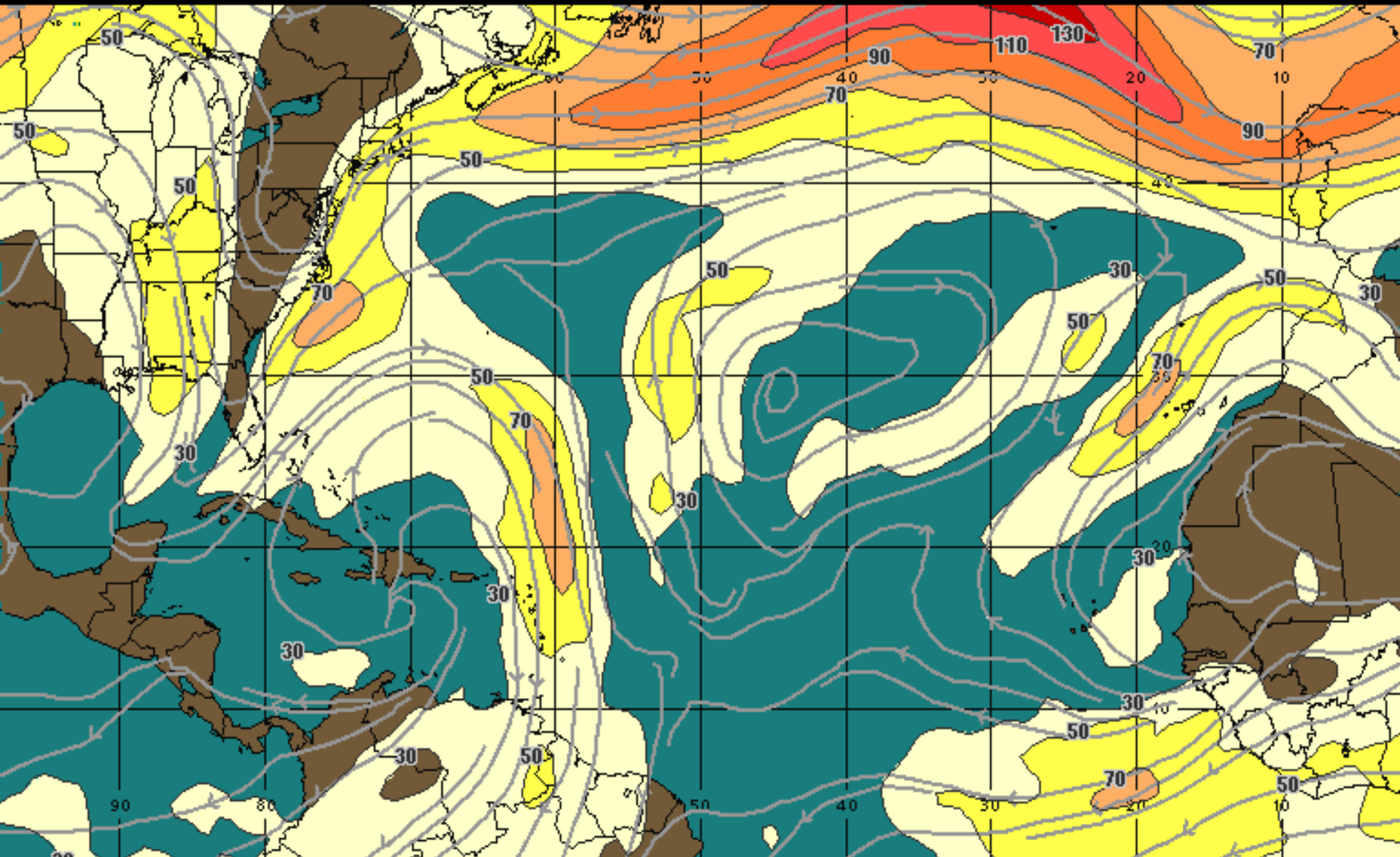
Valid 1200 UTC Fri 24-Aug-12

30 mph 50 70 90 110 130 150 +



# 60 Hour Forecast Wind Shear

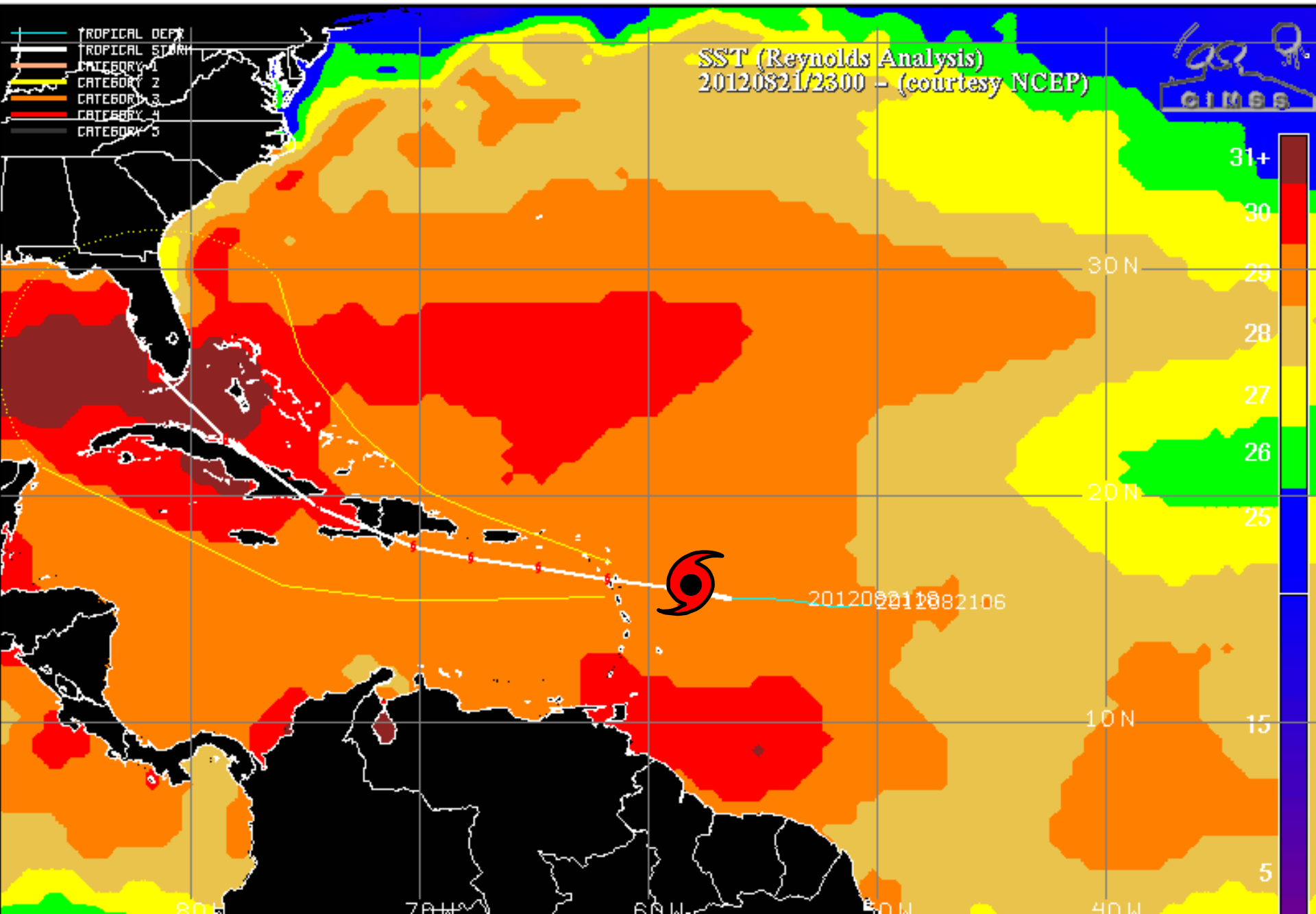
12:00 25-AUG-2012 GMT ©Copyright WSI Corporation <http://www.wsi.com>



200Mb Wind Speed / Streamline Forecast  
Valid 1200 UTC Sat 25-Aug-12

30 mph 50 70 90 110 130 150 +

# Current Sea Surface Temperatures Surrounding Isaac

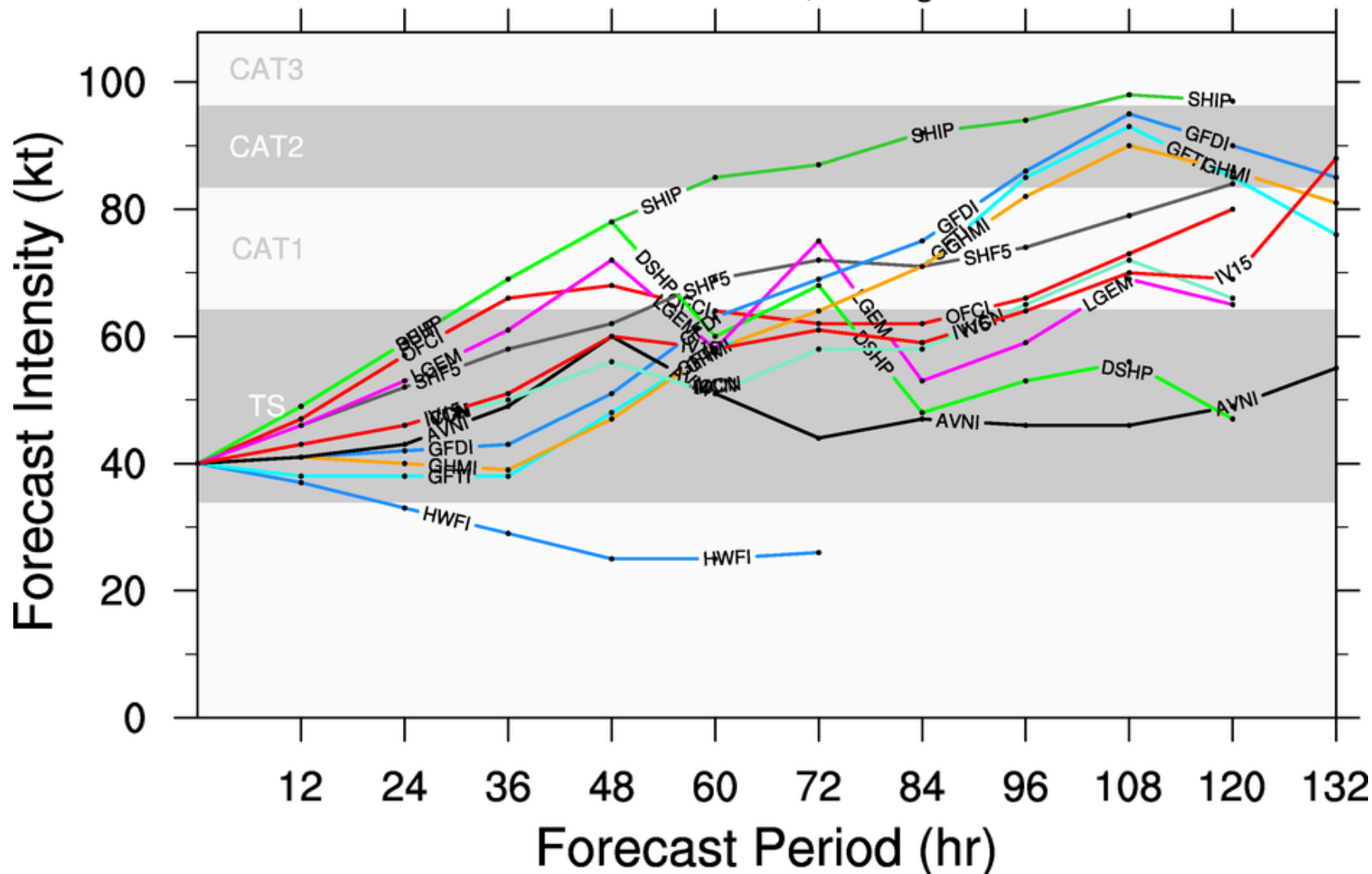




# TROPICAL STORM ISAAC (AL09)

## Early-cycle intensity guidance

initialized at 1200 UTC, 22 August 2012



By using this plot, the user agrees to the UCAR Terms of Use  
which can be accessed at: <http://www2.ucar.edu/terms-of-use>

Plot generated at 1353 UTC 22 August 2012



Intensity (Maximum Wind Speed) Probability Table  
 Tropical Storm Isaac Advisory Number 7  
 5:00 PM AST Aug 22 2012



Wind Range (mph)	Forecast Time						
	12 hour for 2 AM Thu	24 hour for 2 PM Thu	36 hour for 2 AM Fri	48 hour for 2 PM Fri	72 hour for 2 PM Sat	96 hour for 2 PM Sun	120 hour for 2 PM Mon
Dissipated	1%	1%	1%	1%	4%	10%	16%
Tropical Depression (<39)	14%	9%	7%	7%	7%	17%	14%
Tropical Storm (39-73)	83%	77%	60%	53%	51%	52%	41%
Hurricane (all categories)	2%	13%	32%	38%	39%	21%	29%
-- Category 1 (74-95)	2%	11%	27%	30%	28%	17%	21%
-- Category 2 (96-110)	<1%	1%	4%	6%	8%	3%	6%
-- Category 3 (111-130)	<1%	<1%	1%	2%	2%	1%	2%
-- Category 4 (131-155)	<1%	<1%	<1%	<1%	<1%	<1%	<1%
-- Category 5 (>155)	<1%	<1%	<1%	<1%	<1%	<1%	<1%
Forecast Maximum Wind	45 mph	60 mph	70 mph	80 mph	70 mph	70 mph	80 mph



# STEERING CURRENT FORECAST FOR TUESDAY

A LOT of uncertainty beyond this weekend:

1. Strength/timing of eastern-U.S. trough
2. Will Isaac survive Hispaniola?

**H**

TROUGH

POSSIBLE TACKS OF ISAAC

?

00 UTC GEM

06 UTC GFS

00 UTC ECMWF



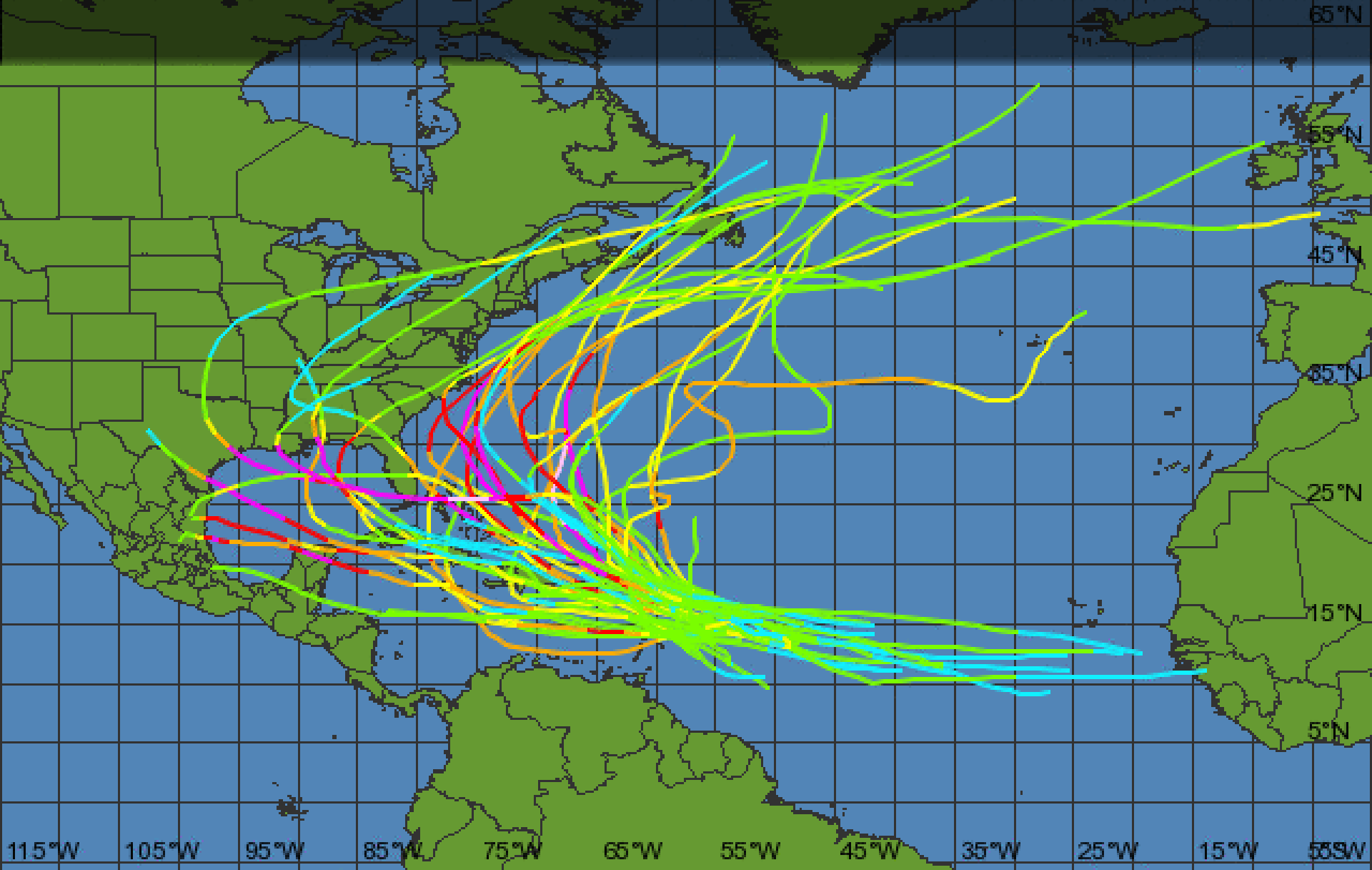
1127 AM EDT  
Wed Aug 22 2012  
National Weather Service  
Tallahassee, FL

# Tropical Storm Isaac

Tracks of all August  
Tropical Storms  
Within 2 degrees of Isaac  
Between 1851 and 2011

## Storm Category

Tropical Depression	Tropical Storm	Category 1	Category 2	Category 3	Category 4	Category 5
< 39 mph	39-73 mph	74-95 mph	96-110 mph	111-130 mph	131-155 mph	156+ mph





# TD Ten

11 AM EDT Wed Aug 22 2012

Position 12.4 N 36.3 W

Maximum Winds 35 mph

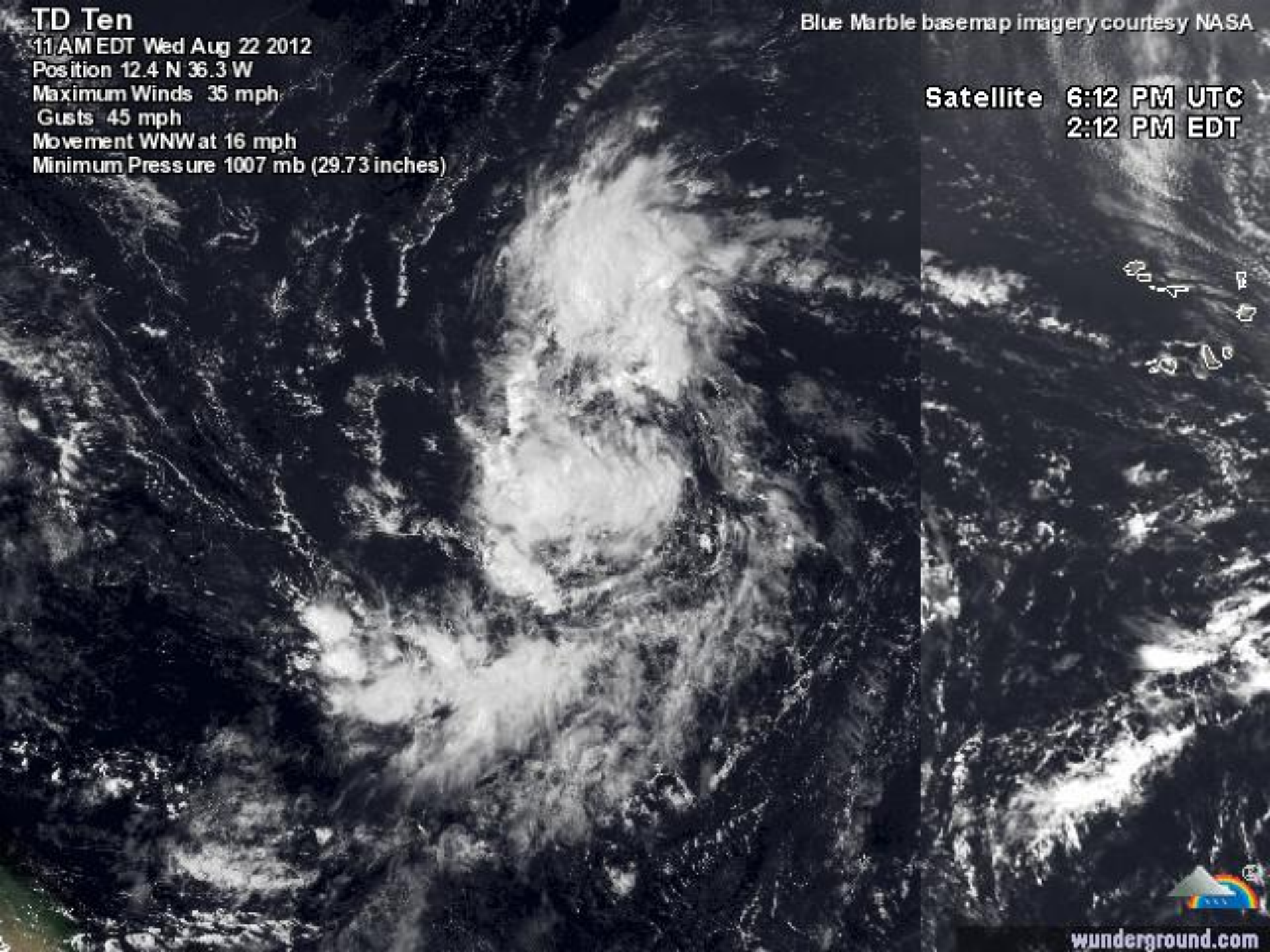
Gusts 45 mph

Movement WNW at 16 mph

Minimum Pressure 1007 mb (29.73 inches)

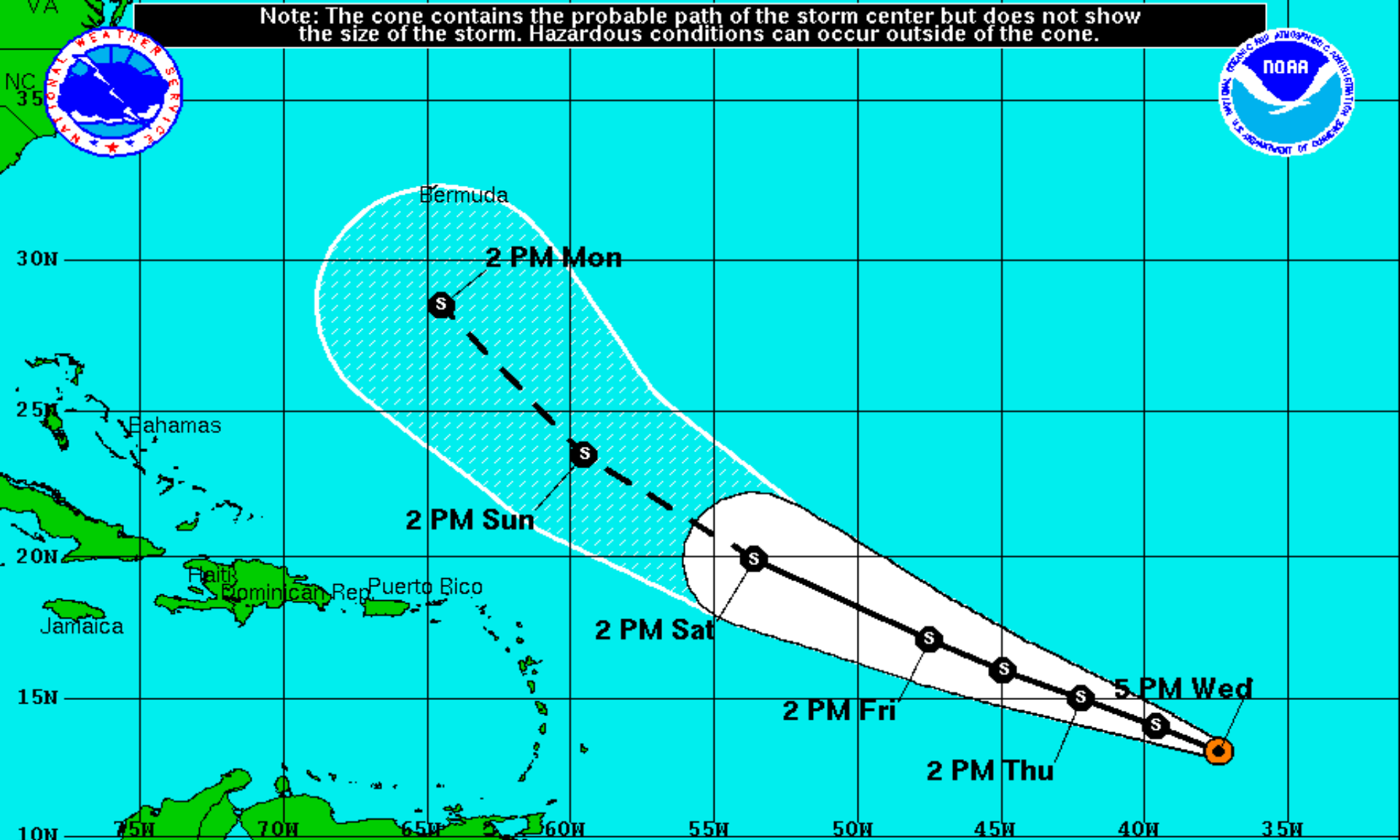
Blue Marble basemap imagery courtesy NASA

Satellite 6:12 PM UTC  
2:12 PM EDT






wunderground.com


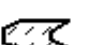
Note: The cone contains the probable path of the storm center but does not show the size of the storm. Hazardous conditions can occur outside of the cone.







**Tropical Depression Ten**  
 Wednesday August 22, 2012  
 5 PM EDT Advisory 2  
 NWS National Hurricane Center

**Current Information:**   
 Center Location 13.1 N 37.4 W  
 Max Sustained Wind 35 mph  
 Movement WNW at 16 mph

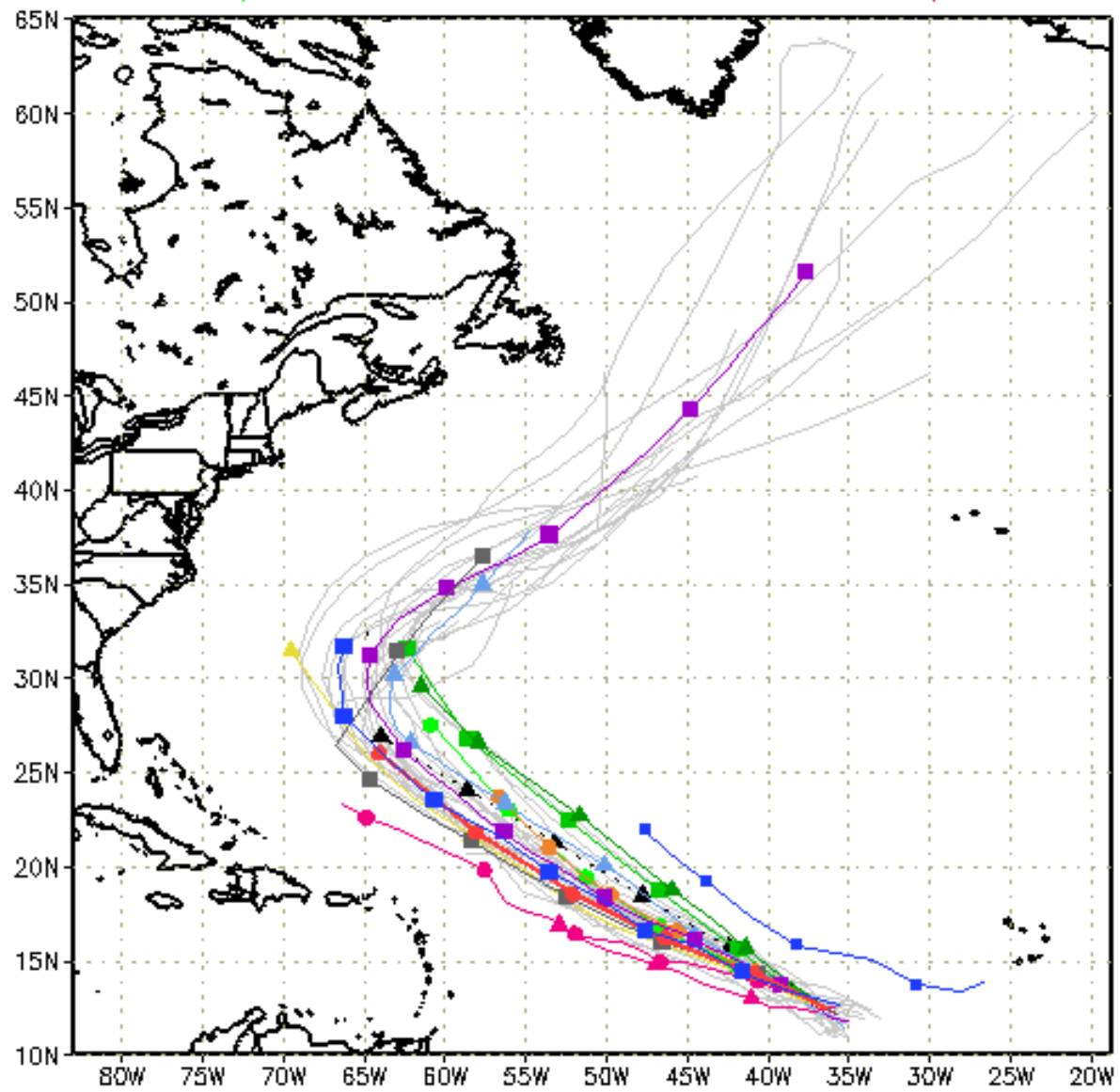
**Forecast Positions:**  
 Tropical Cyclone  Post-Tropical  
 Sustained Winds: D < 39 mph  
 S 39-73 mph H 74-110 mph M > 110mph

**Potential Track Area:**  
 Day 1-3  Day 4-5

**Watches:**  
 Hurricane  Trop.Storm

**Warnings:**  
 Hurricane  Trop.Storm

---▲--- XTRP 22/1800Z	---▲--- BAMD 22/1800Z	---▲--- GFDL 22/1200Z	---▲--- AVNO 22/0600Z	---▲--- CMC 22/1200Z
---■--- TVCN 22/1200Z	---■--- BAMB 22/1800Z	---■--- UKM 22/1200Z	---■--- AEMN 22/0600Z	---■--- APxx 22/0600Z
---●--- NHC 22/1500Z	---●--- BAMS 22/1800Z	---●--- NGPS Not Avail	---●--- HWRF 22/1200Z	---●--- GLP5 22/1200Z



storm\_10  
 sfwmd.gov  
 weather@sfwmd.gov  
 22-Aug 14:21 EDT

NHC Advisories and County Emergency Management Statements supersede this product. This graphic should complement, not replace, NHC discussions. If anything on this graphic causes confusion, ignore the entire product. For full info, see <http://my.sfwmd.gov/sfwmd/common/images/weather/plots.html>

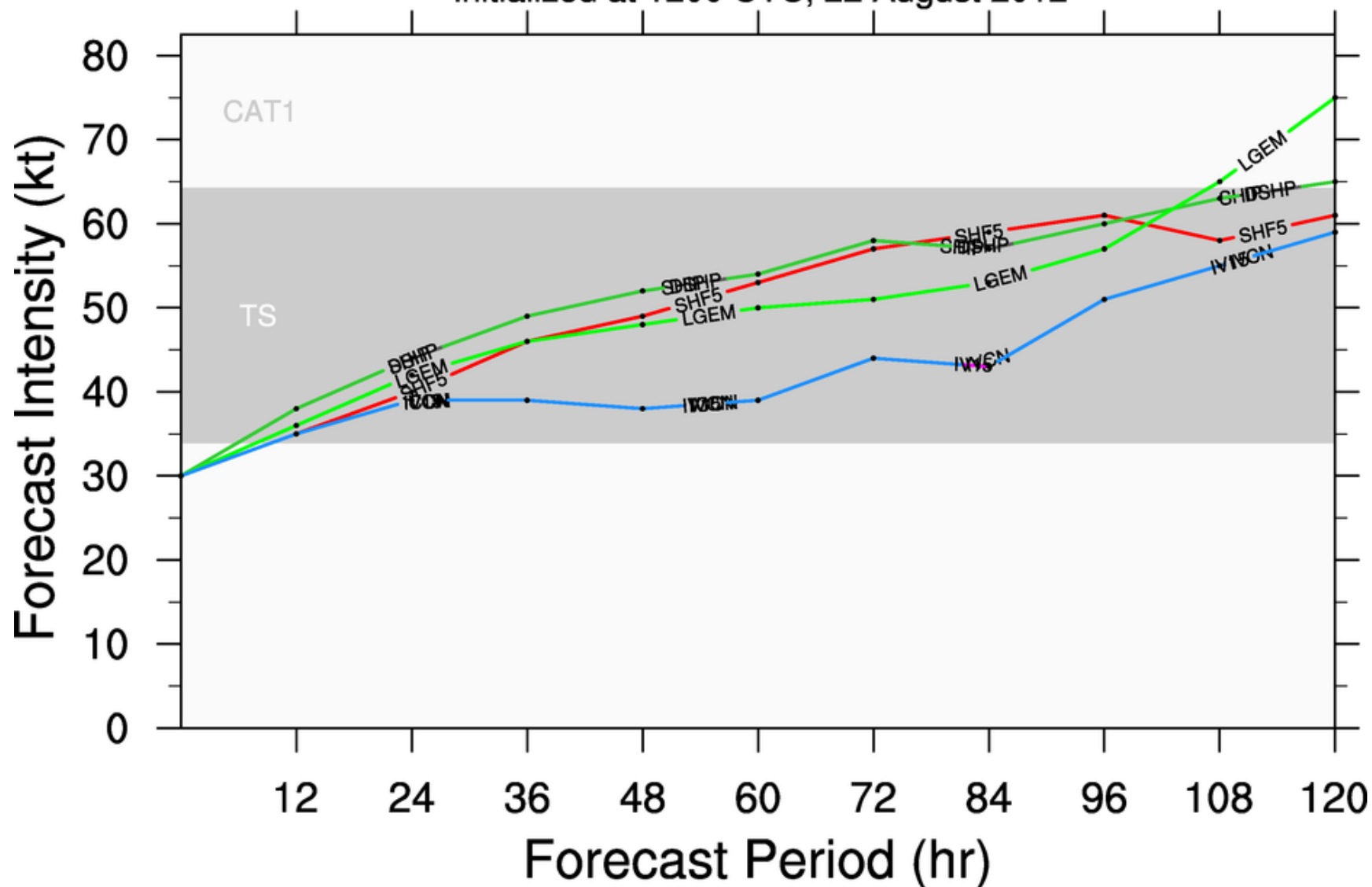




# LOW TEN (AL10)

## Early-cycle intensity guidance

initialized at 1200 UTC, 22 August 2012

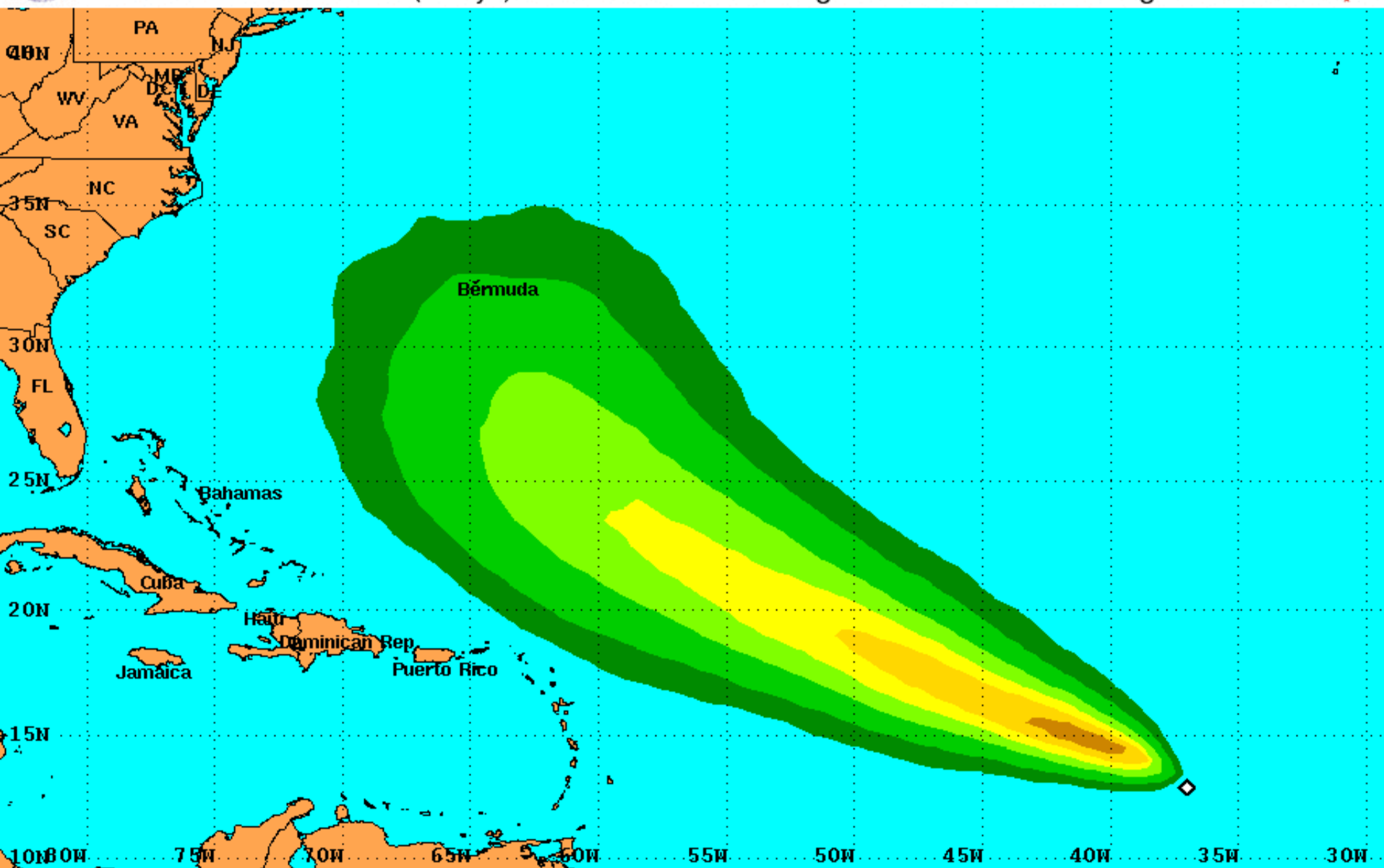


By using this plot, the user agrees to the UCAR Terms of Use  
which can be accessed at: <http://www2.ucar.edu/terms-of-use>

Plot generated at 1352 UTC 22 August 2012

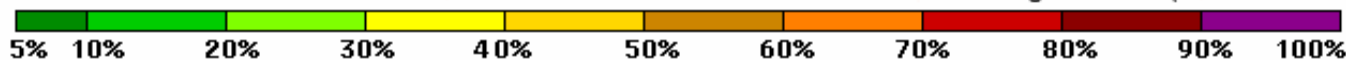


PRELIMINARY (SINGLE STORM) Tropical Storm Force Wind Speed Probabilities  
For the 120 hours (5 days) from 2 PM AST Wed Aug 22 to 2 PM AST Mon Aug 27



Probability of sustained tropical storm force surface winds (1-minute average of 39 mph or greater)

◇ indicates TROPICAL DEPRESSION TEN center location at 2 PM AST Wed Aug 22 2012 (Forecast/Advisory #2)



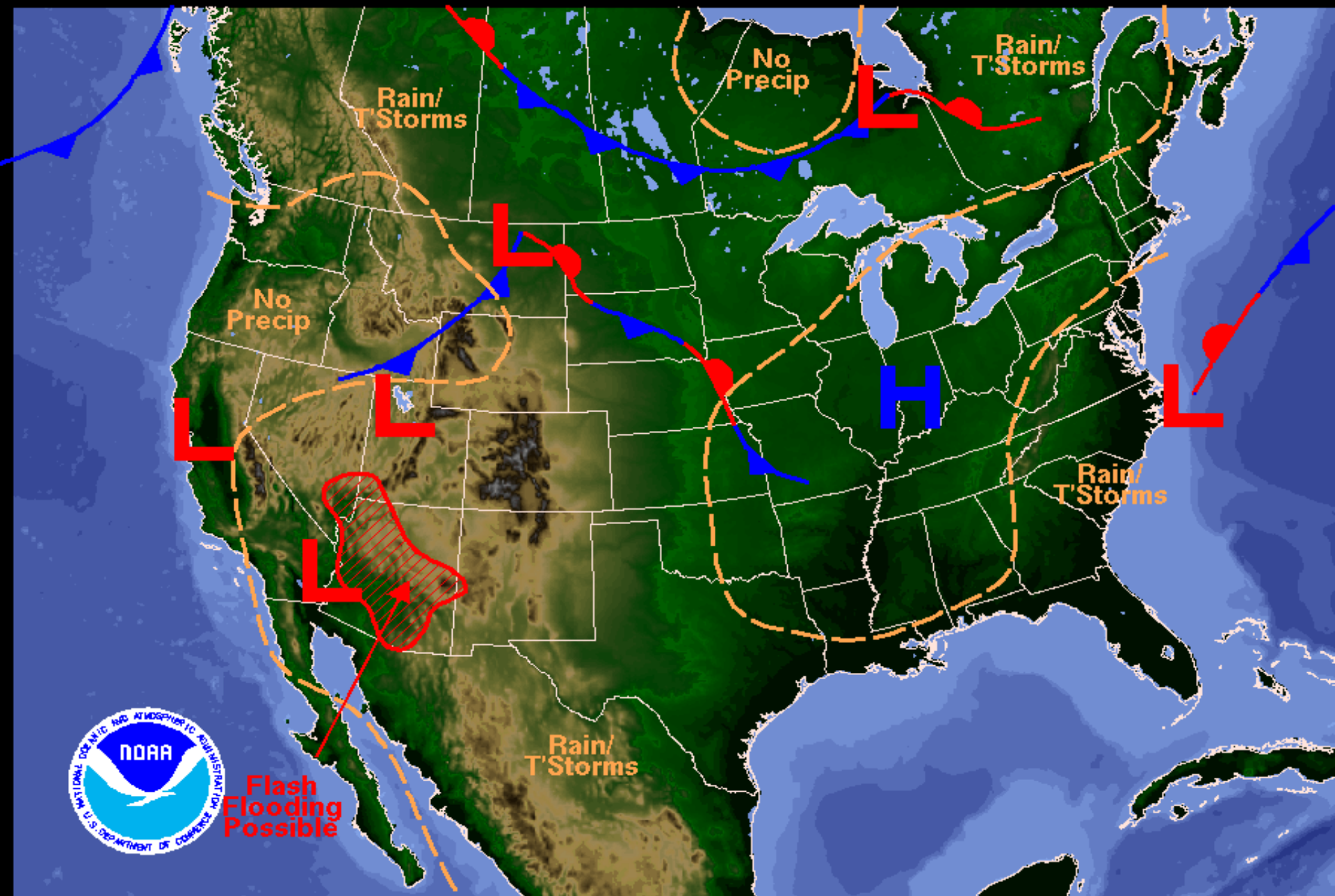


Intensity (Maximum Wind Speed) Probability Table  
Tropical Depression Ten Advisory Number 2  
5:00 PM AST Aug 22 2012



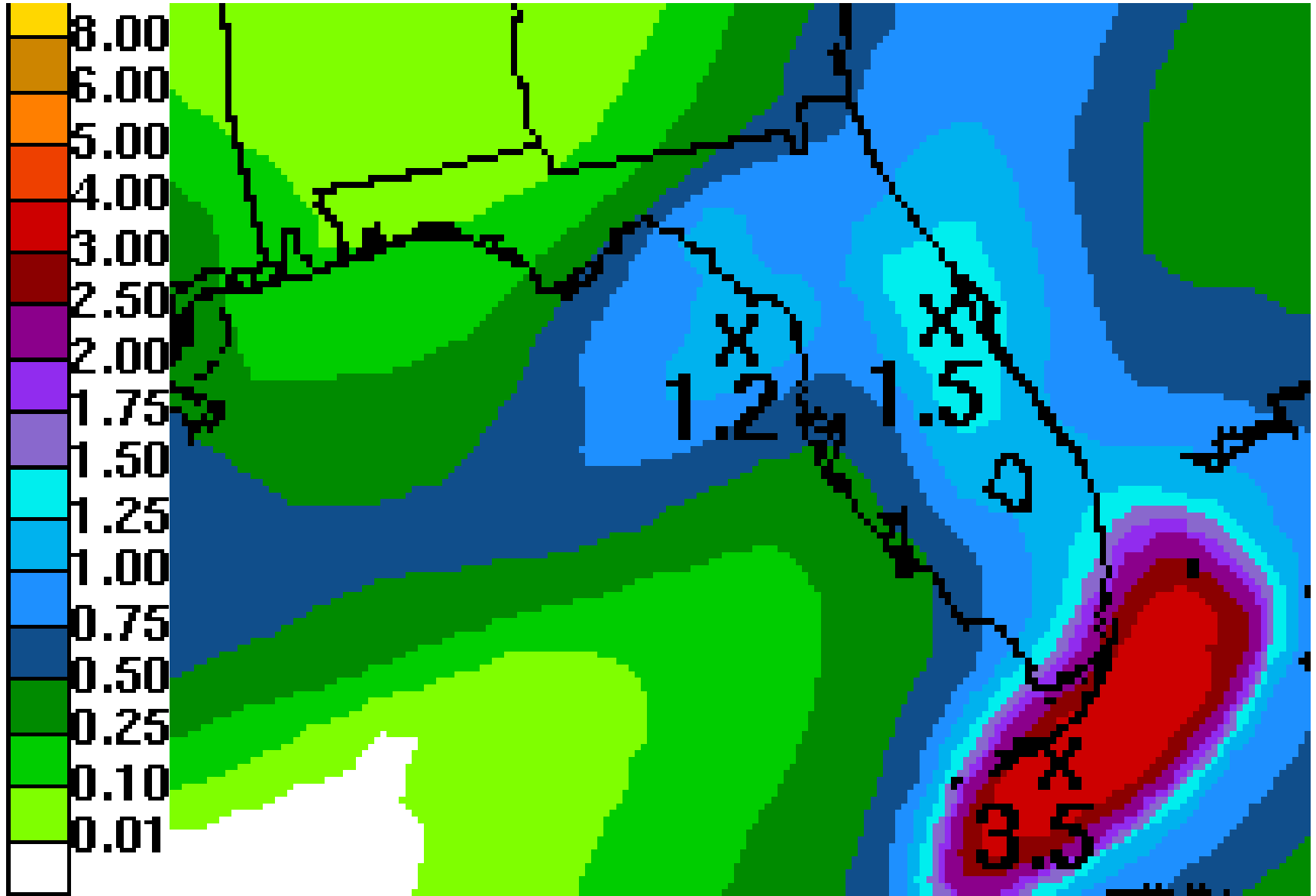
Wind Range (mph)	Forecast Time						
	12 hour for 2 AM Thu	24 hour for 2 PM Thu	36 hour for 2 AM Fri	48 hour for 2 PM Fri	72 hour for 2 PM Sat	96 hour for 2 PM Sun	120 hour for 2 PM Mon
Dissipated	1%	1%	3%	3%	4%	4%	3%
Tropical Depression (<39)	11%	15%	18%	14%	17%	12%	12%
Tropical Storm (39-73)	86%	75%	69%	64%	59%	56%	53%
Hurricane (all categories)	2%	9%	10%	19%	20%	28%	32%
-- Category 1 (74-95)	2%	8%	8%	16%	17%	22%	25%
-- Category 2 (96-110)	<1%	1%	1%	3%	3%	4%	5%
-- Category 3 (111-130)	<1%	<1%	<1%	1%	1%	2%	2%
-- Category 4 (131-155)	<1%	<1%	<1%	<1%	<1%	<1%	<1%
-- Category 5 (>155)	<1%	<1%	<1%	<1%	<1%	<1%	<1%
Forecast Maximum Wind	45 mph	50 mph	50 mph	60 mph	60 mph	65 mph	70 mph





Weather Forecast for Wed, Aug 22, 2012, issued 3:01 AM EDT  
DOC/NOAA/NWS/NCEP/Hydrometeorological Prediction Center  
Prepared by McCreynolds based on HPC, SPC, and NHC forecasts

# Forecast Rainfall Amounts through Monday Morning



# Flood Watch

## Through 8pm Wednesday:

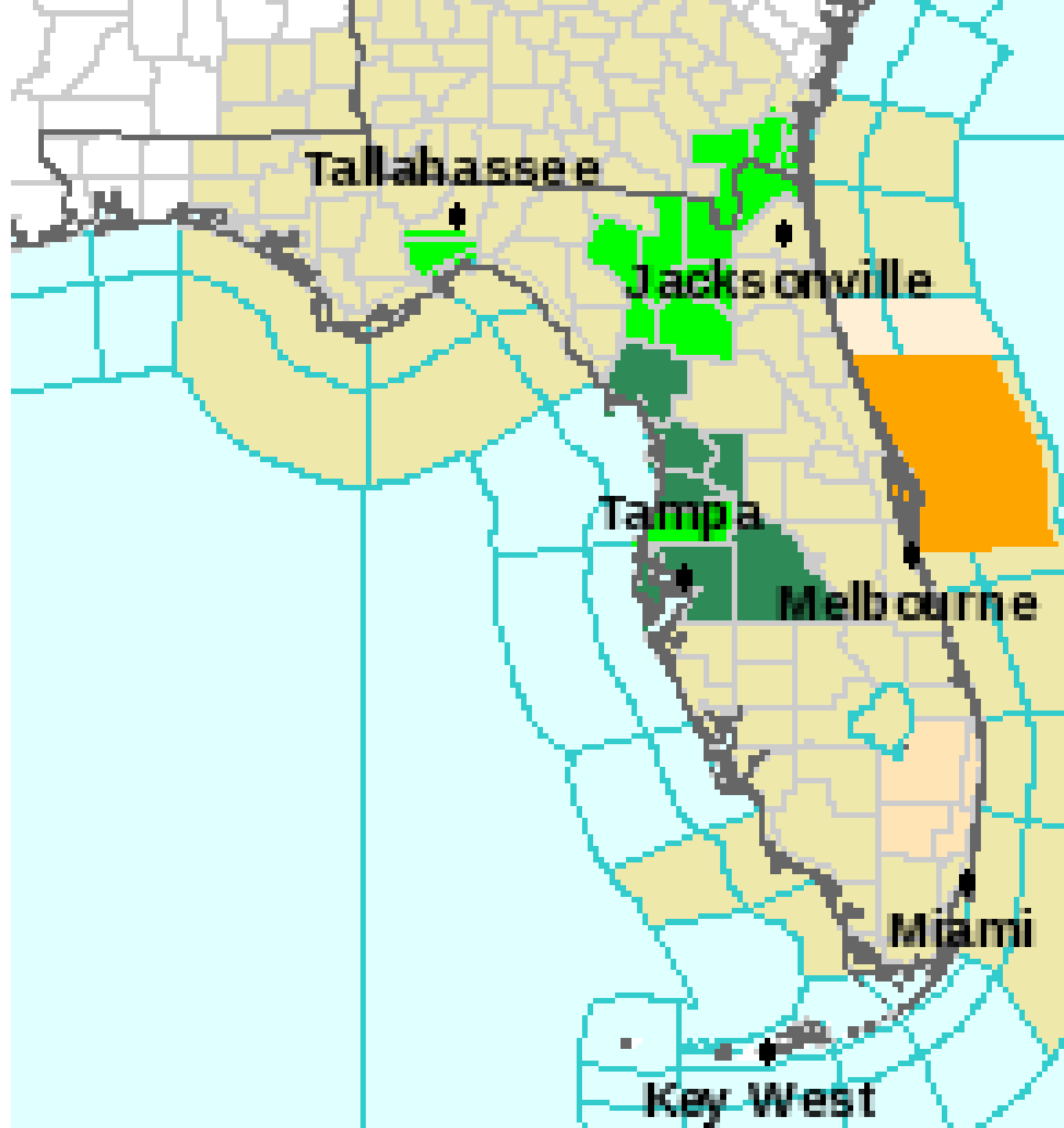
Hillsborough, Pasco,  
Pinellas, Polk

## Through 8pm Thursday:

Citrus, Hernando, Levy,  
Sumter

# River Flood Warning

St. Marks River, St. Mary's  
River, Santa Fe, Cypress  
Creek





# Experimental Chance of Exceedance

