



Tropical Update



11:00 AM EDT

Friday, October 11, 2024

Milton Recovery Weather & Riverine Flooding

Tropical Storm Leslie

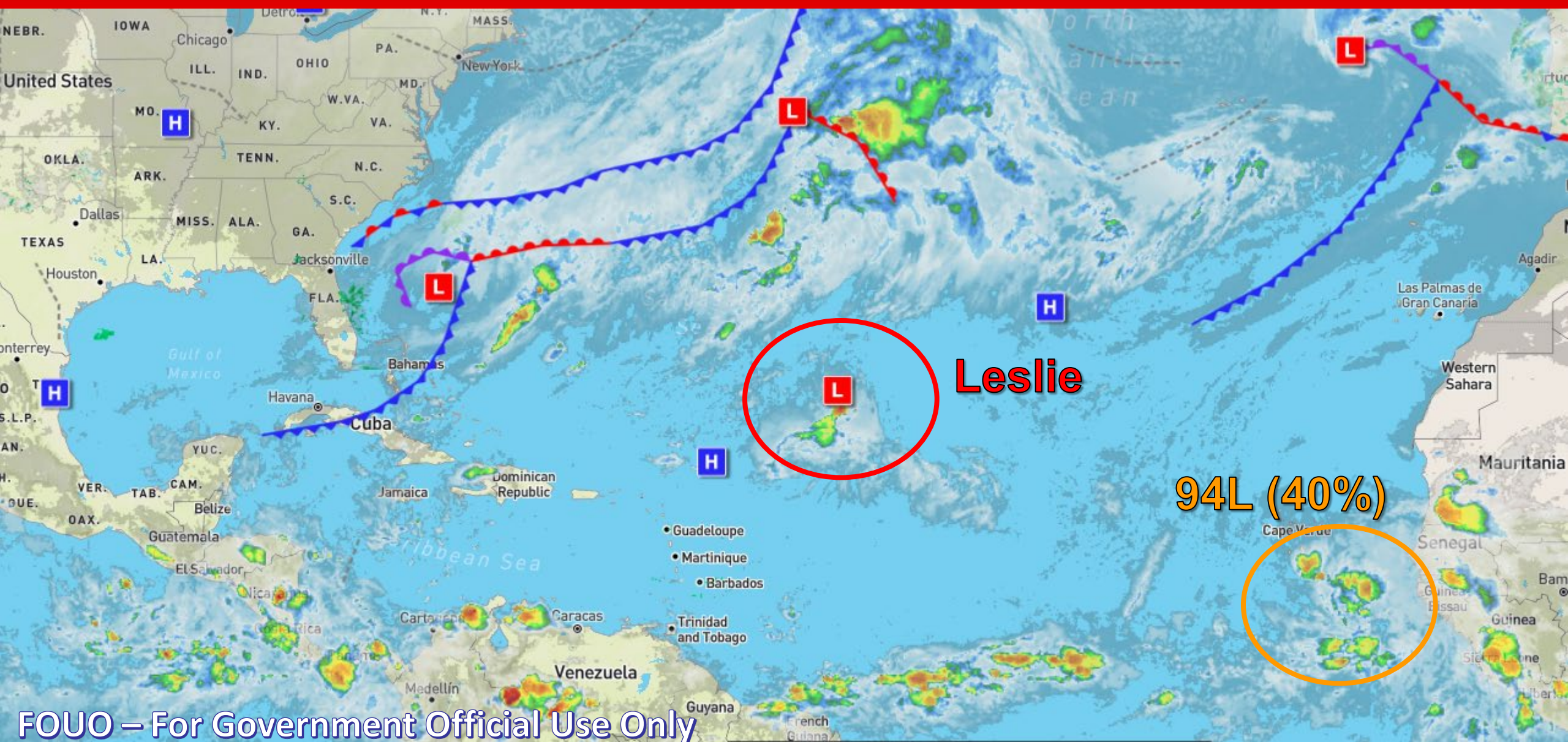
Eastern Tropical Atlantic Disturbance - Invest 94L (50%)

This update is intended for government and emergency response officials, and is provided for informational and situational awareness purposes only. Forecast conditions are subject to change based on a variety of environmental factors. For additional information, or for any life safety concerns with an active weather event please contact your County Emergency Management or Public Safety Office, local National Weather Service forecast office, or visit the National Hurricane Center website at www.hurricanes.gov.



Atlantic Basin Satellite Image

Chance of development: None Low Medium High

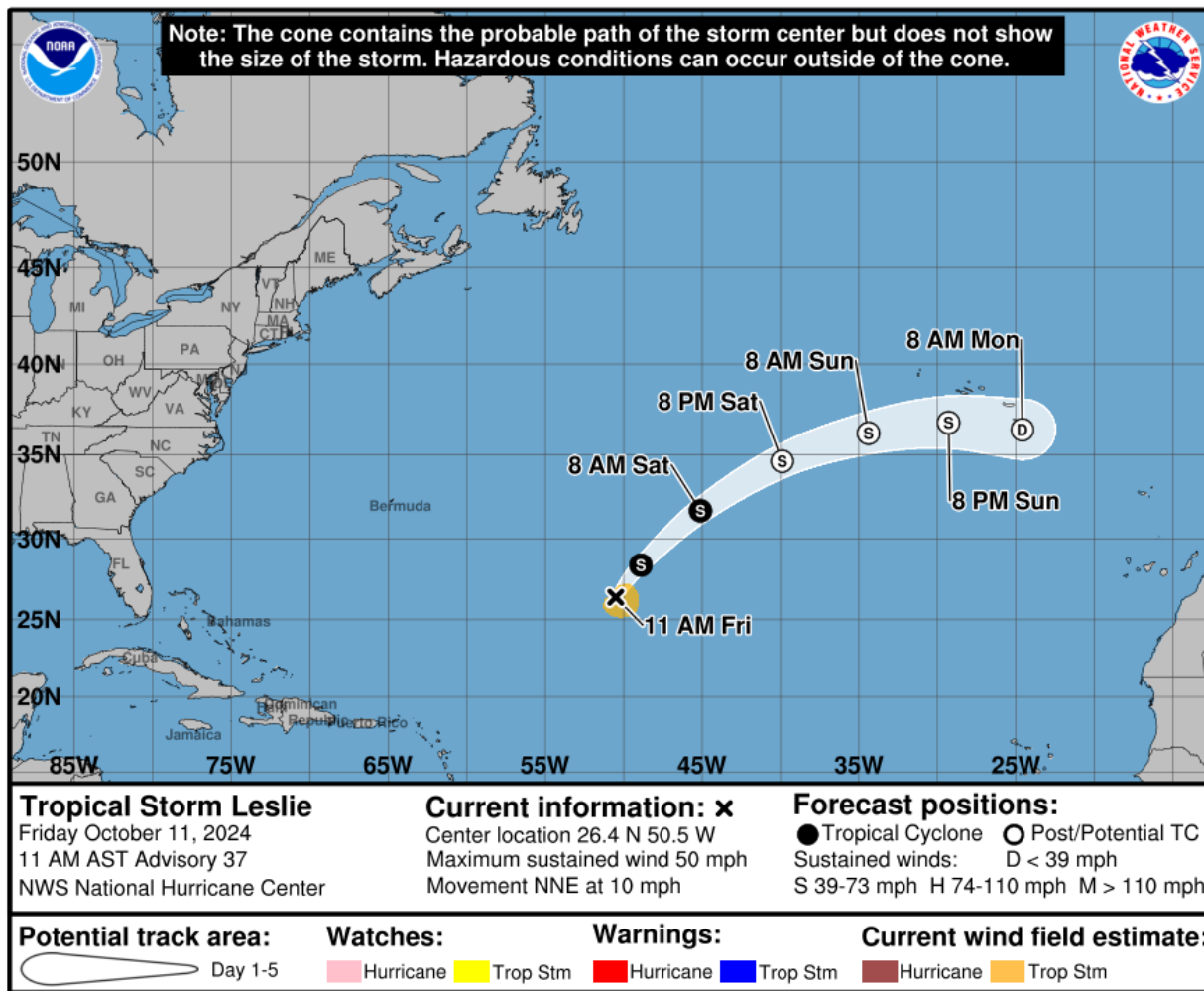


FOUO – For Government Official Use Only



Tropical Storm Leslie

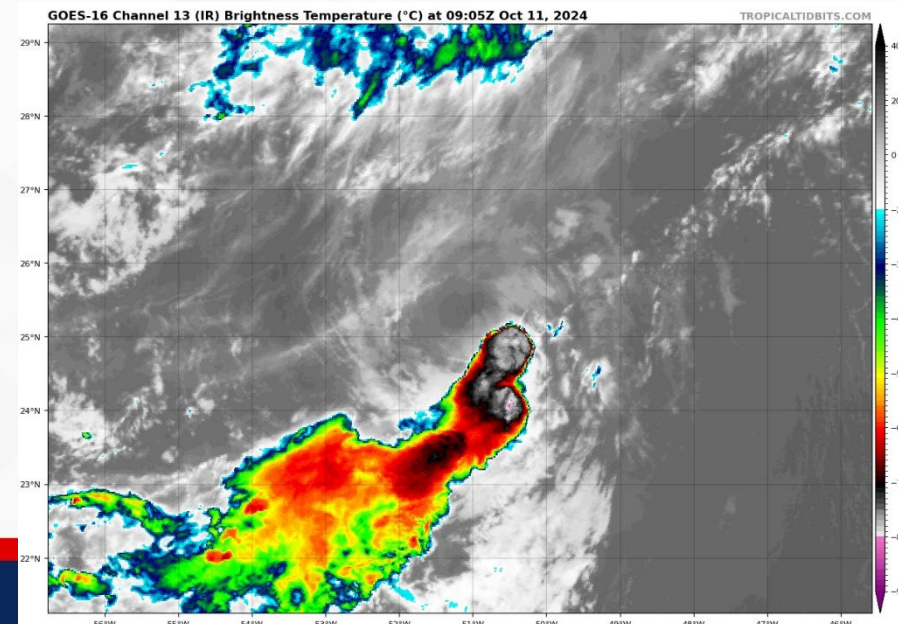
From the National Hurricane Center (NHC)



- **Location:** 1585 miles WSW of the Azores
- **Maximum Sustained Winds:** 50 mph
- **Current Movement:** NNE at 10 mph

A turn toward the northeast with an increase in forward speed is expected tonight, followed by a turn toward the east-northeast over the weekend. Maximum sustained winds will continue to decrease today, and Leslie is forecast to become a post-tropical cyclone in a day or two.

Leslie poses no threat to Florida.



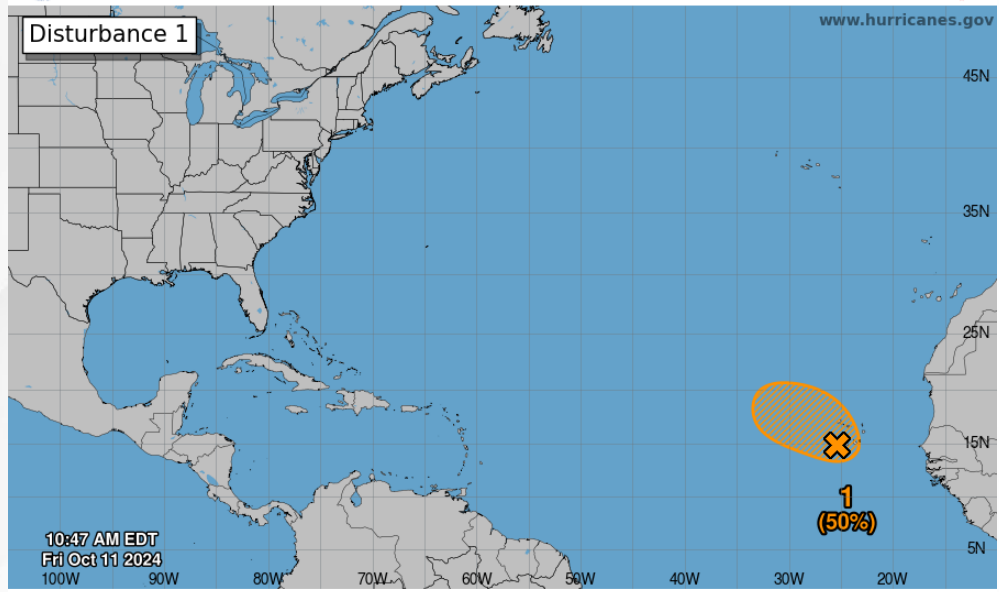


Tropical Weather Outlook

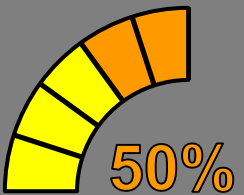
Invest 94L - Eastern Tropical Atlantic



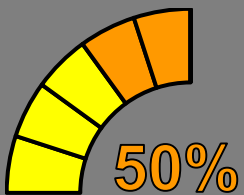
Seven-Day Graphical Tropical Weather Outlook
National Hurricane Center Miami, Florida



Current Disturbances and Seven-Day Cyclone Formation Chance: < 40% 40-60% > 60%
Tropical or Sub-Tropical Cyclone: Depression Storm Hurricane
 Post-Tropical Cyclone or Remnants



48 Hour Formation



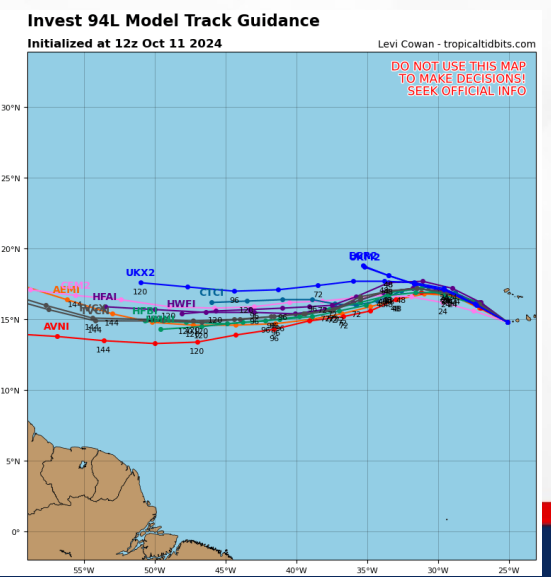
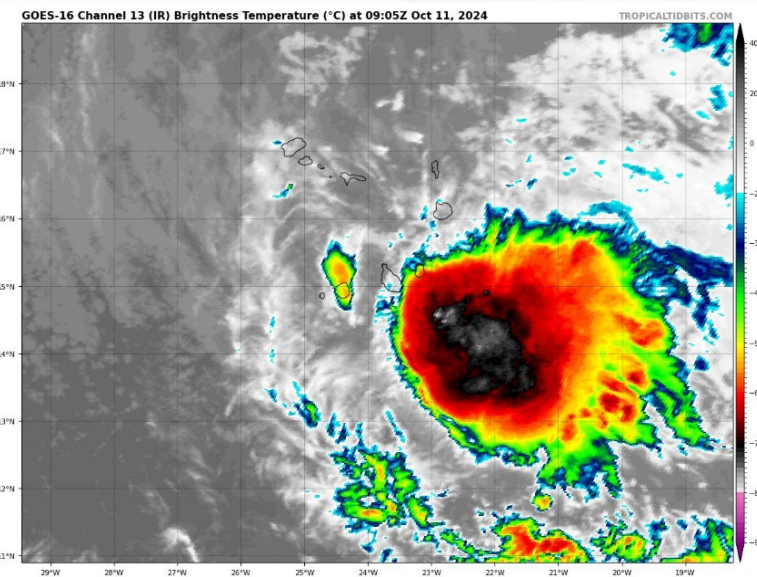
7 Day Formation

Very recent satellite-derived wind data indicate that winds to tropical storm-force are occurring over portions of the Cabo Verde Islands in association with an area of low pressure centered near the southwestern portion of the archipelago. However, the satellite data showed that the circulation is elongated, and the associated shower and thunderstorm activity remains disorganized. Some additional development is possible, and a short-lived tropical storm could form while the system moves westward or west-northwestward at 10-15 mph across the Cabo Verde Islands and eastern tropical Atlantic today. On Saturday, environmental conditions are forecast to become less conducive, and further development appears unlikely after that time. Regardless of development, winds to tropical storm-force and areas of heavy rain are likely to continue over portions of the Cabo Verde Islands through tonight.

This system poses no direct threat to Florida over the next 10 days, at least.

Chance of development through 48 hours...**medium...50%**

Chance of development through 7 days...**medium...50%**



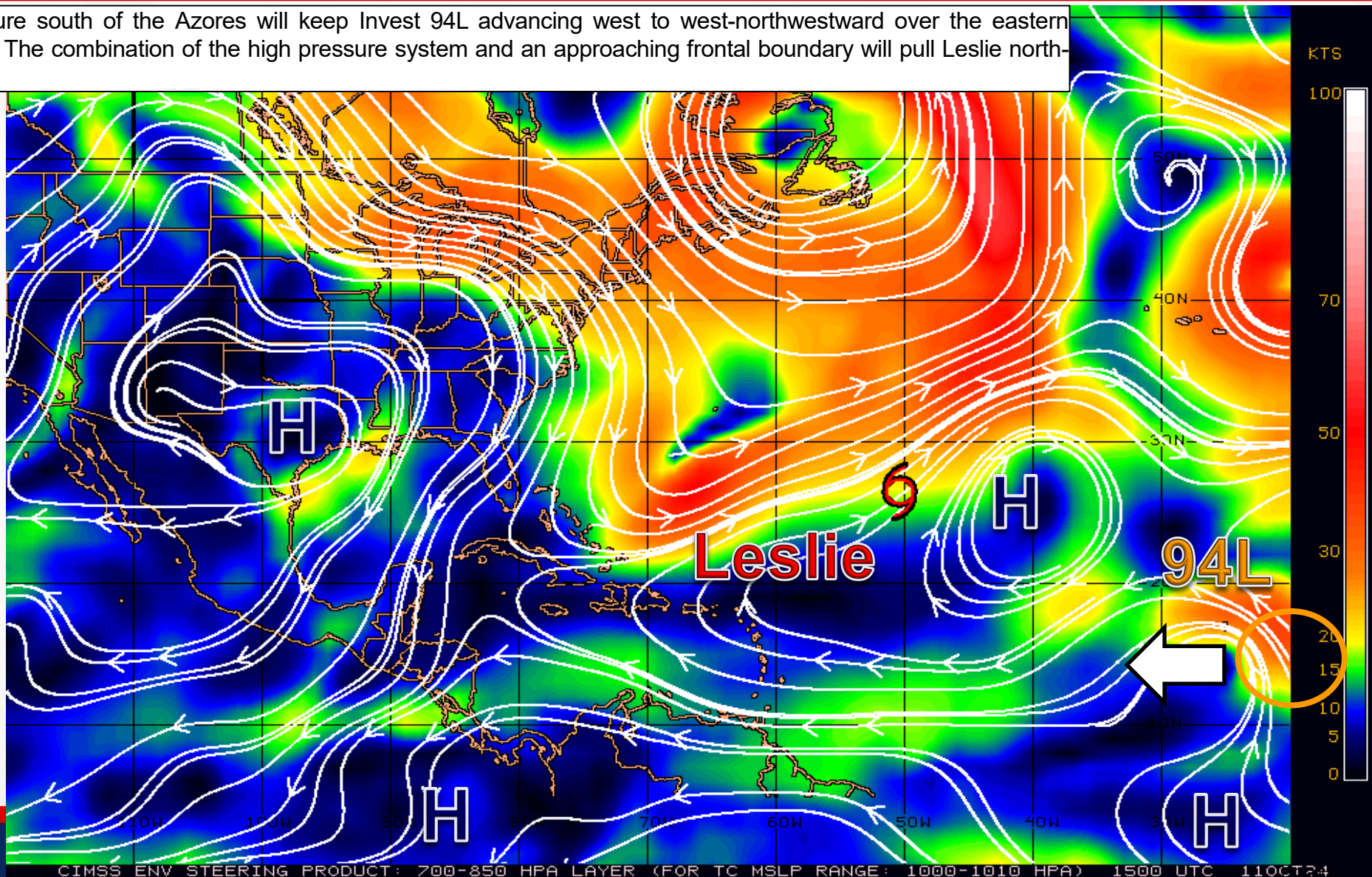


Steering Currents

What is Moving the System?

Color denotes the movement speed through the atmosphere and thin white lines denote direction. Tightly clustered white lines represent faster movement as well.

An area of high pressure south of the Azores will keep Invest 94L advancing west to west-northwestward over the eastern tropical Atlantic Ocean. The combination of the high pressure system and an approaching frontal boundary will pull Leslie north-northeastward.



- Fast Moving Storm
- Fast Moving Storm
- Typical Moving Storm
- Slow Moving Storm

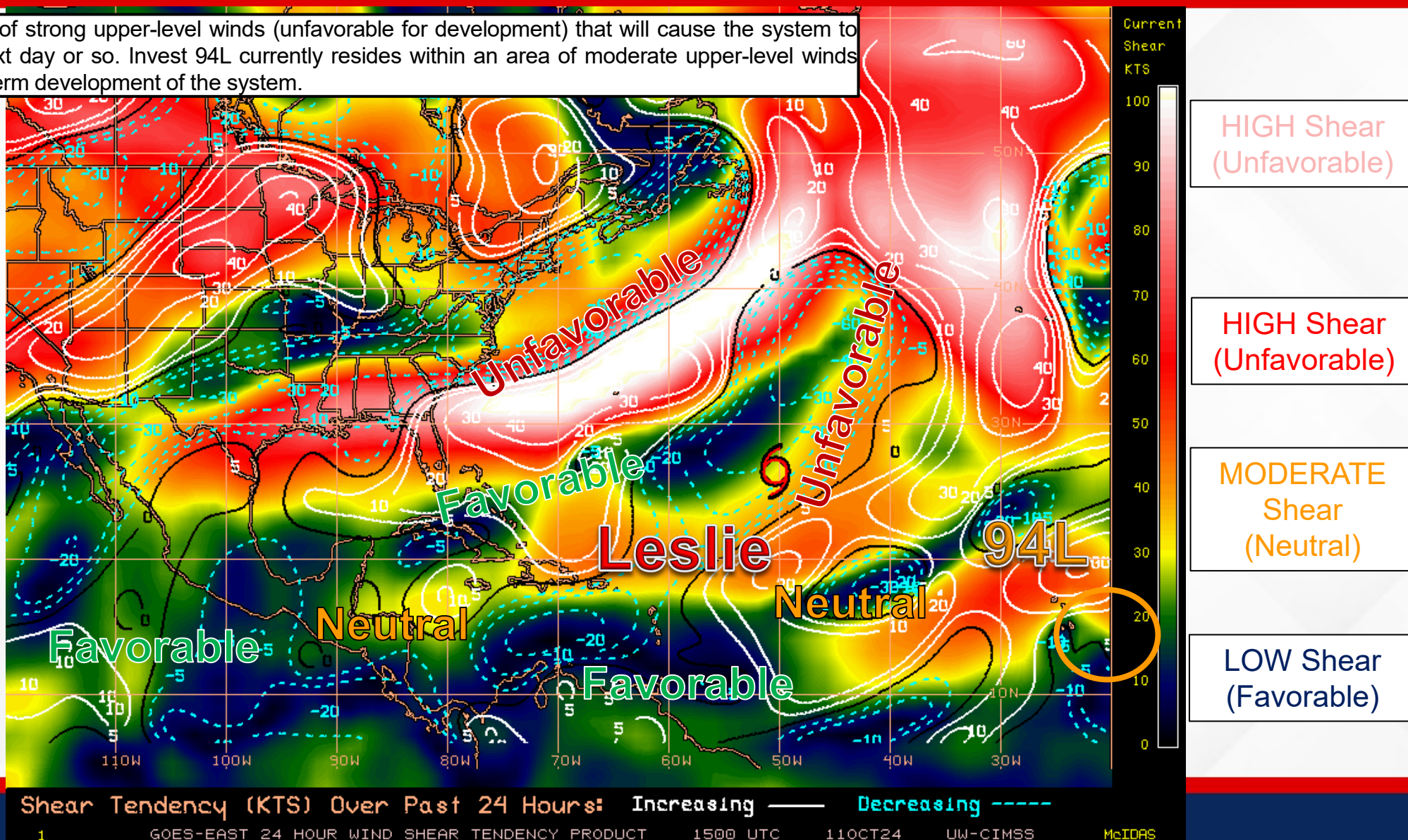


Wind Shear

Is the environment favorable for the system?

Color denotes the amount of wind shear and the lines denote how it have changed over the last 24 hours (dotted lines show decreasing shear and solid lines show increasing).

Leslie is moving into an area of strong upper-level winds (unfavorable for development) that will cause the system to rapidly weaken during the next day or so. Invest 94L currently resides within an area of moderate upper-level winds that will limit the overall long-term development of the system.



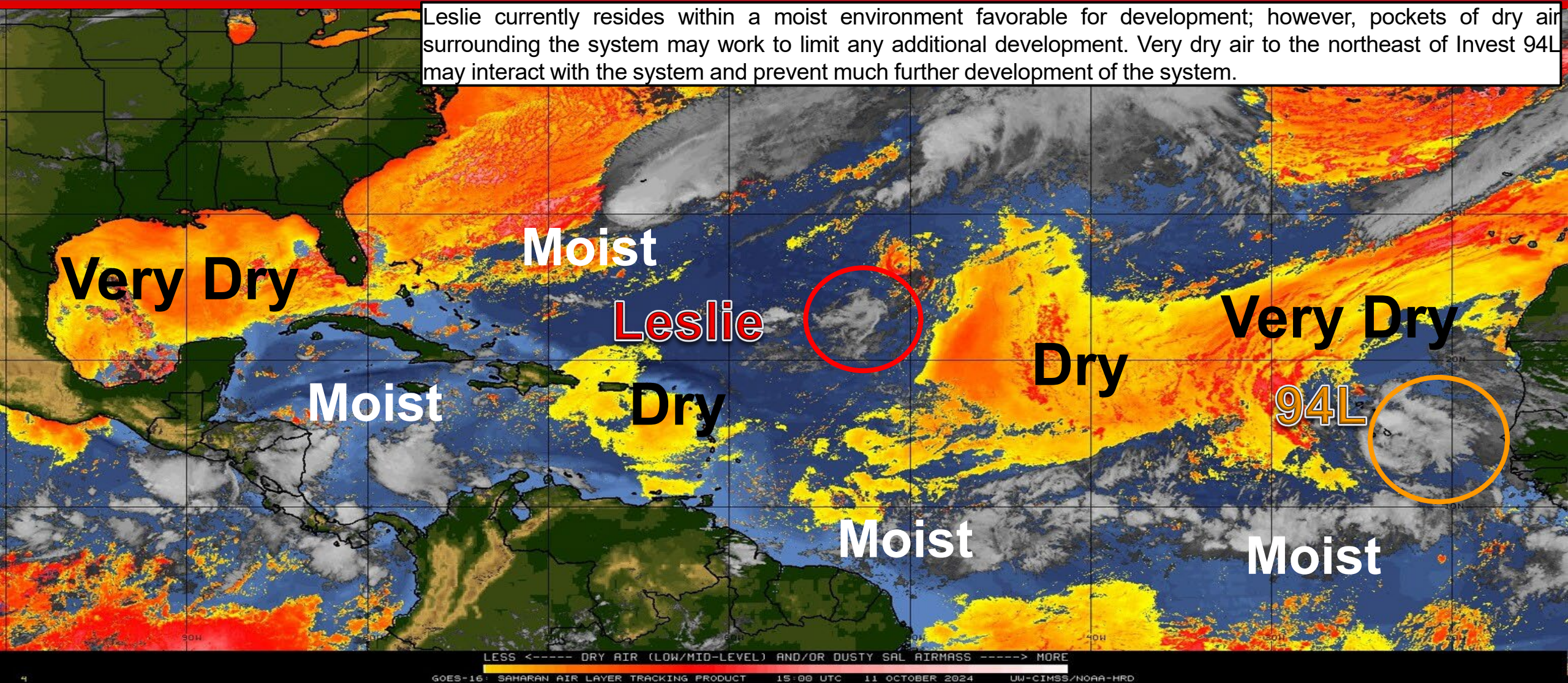


Dry Air & Saharan Dust

Is the environment favorable for the system?

Color denotes concentration of Saharan Dust or dry, stable air.

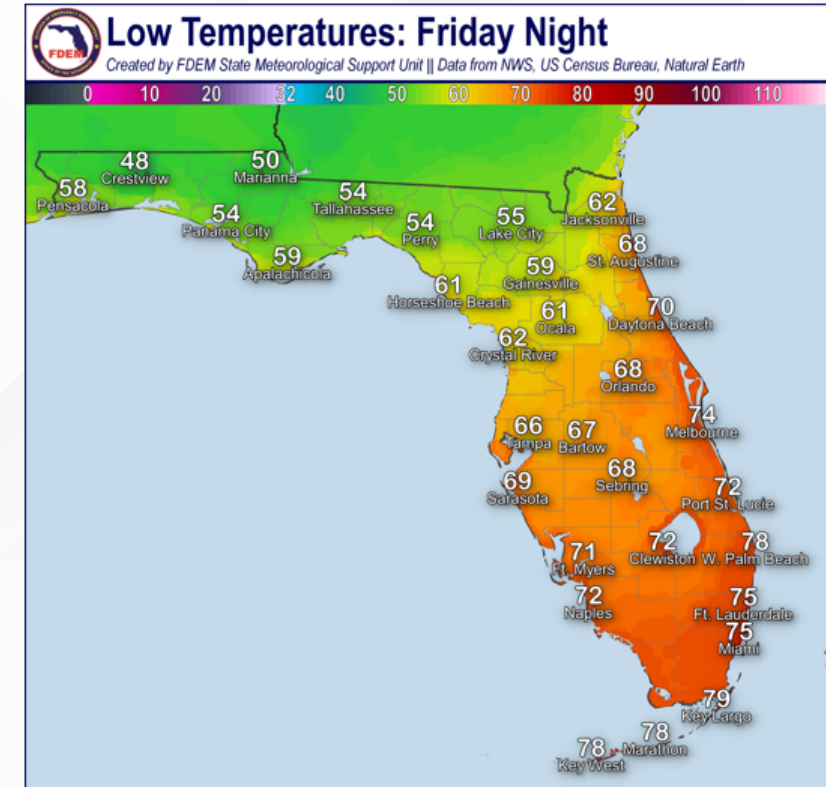
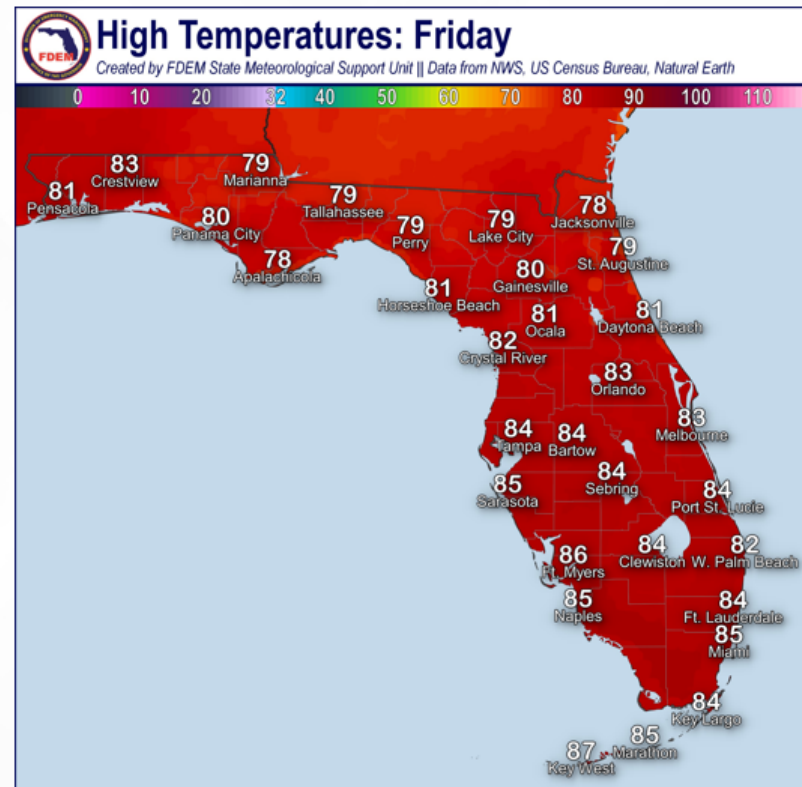
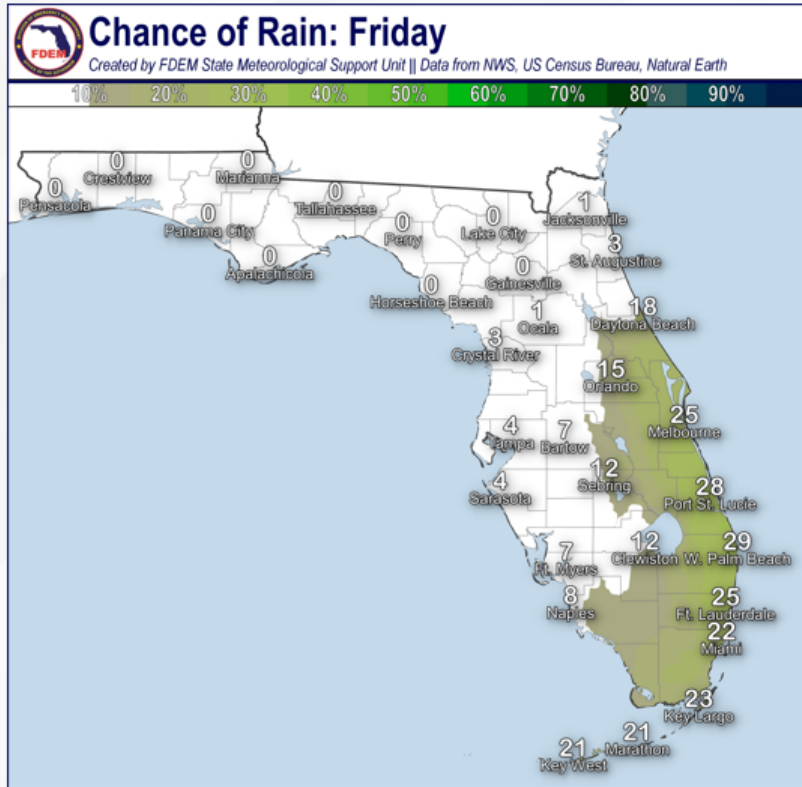
Leslie currently resides within a moist environment favorable for development; however, pockets of dry air surrounding the system may work to limit any additional development. Very dry air to the northeast of Invest 94L may interact with the system and prevent much further development of the system.





Recovery Weather - Friday

Rain Chances, High Temperatures, & Low Temperatures





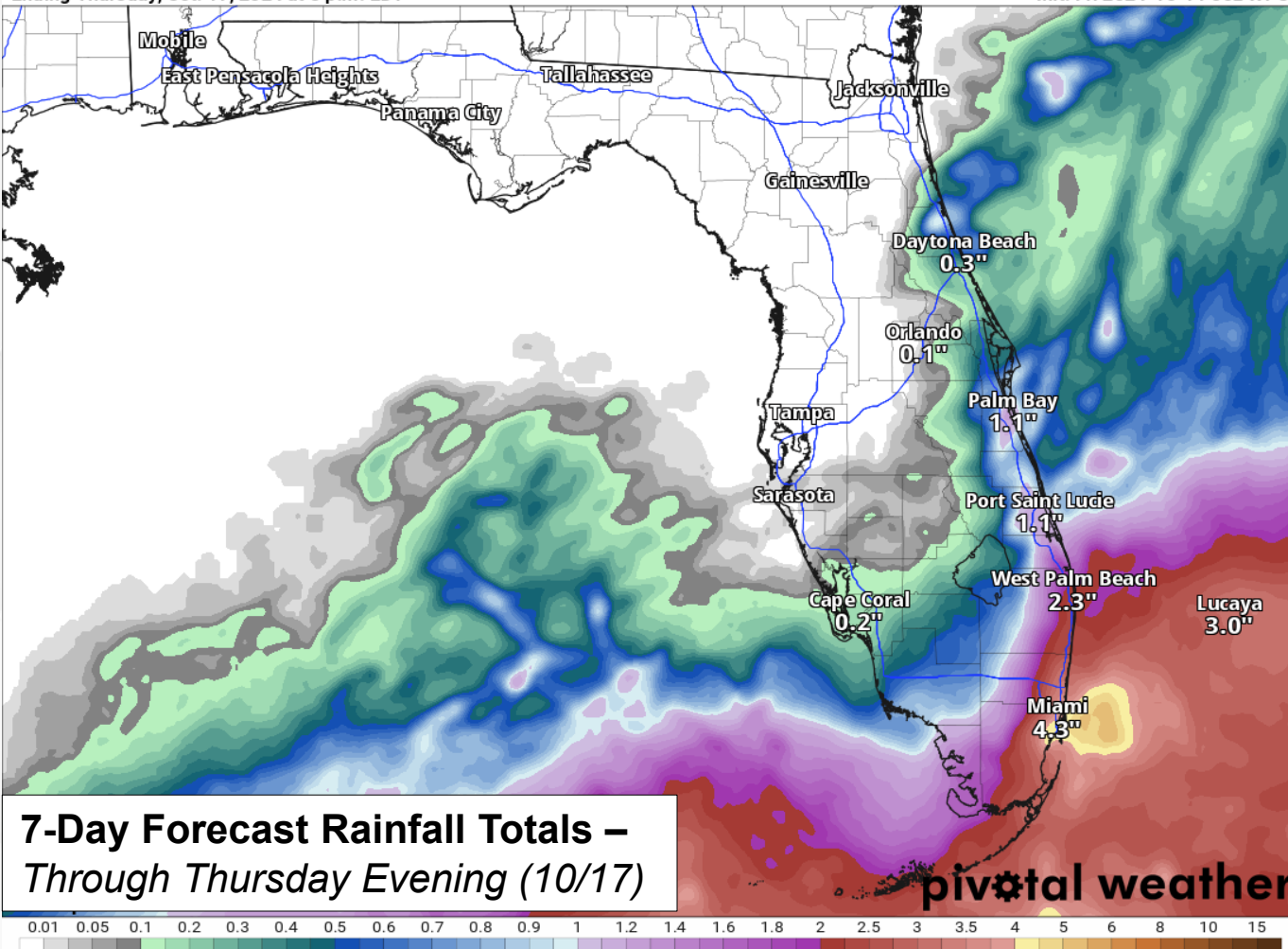
Rainfall Totals – Next 7 Days

From the Weather Prediction Center (WPC)

7-Day Precipitation (in)

Ending Thursday, Oct. 17, 2024 at 8 p.m. EDT

Init: Fri 2024-10-11 00z WPC

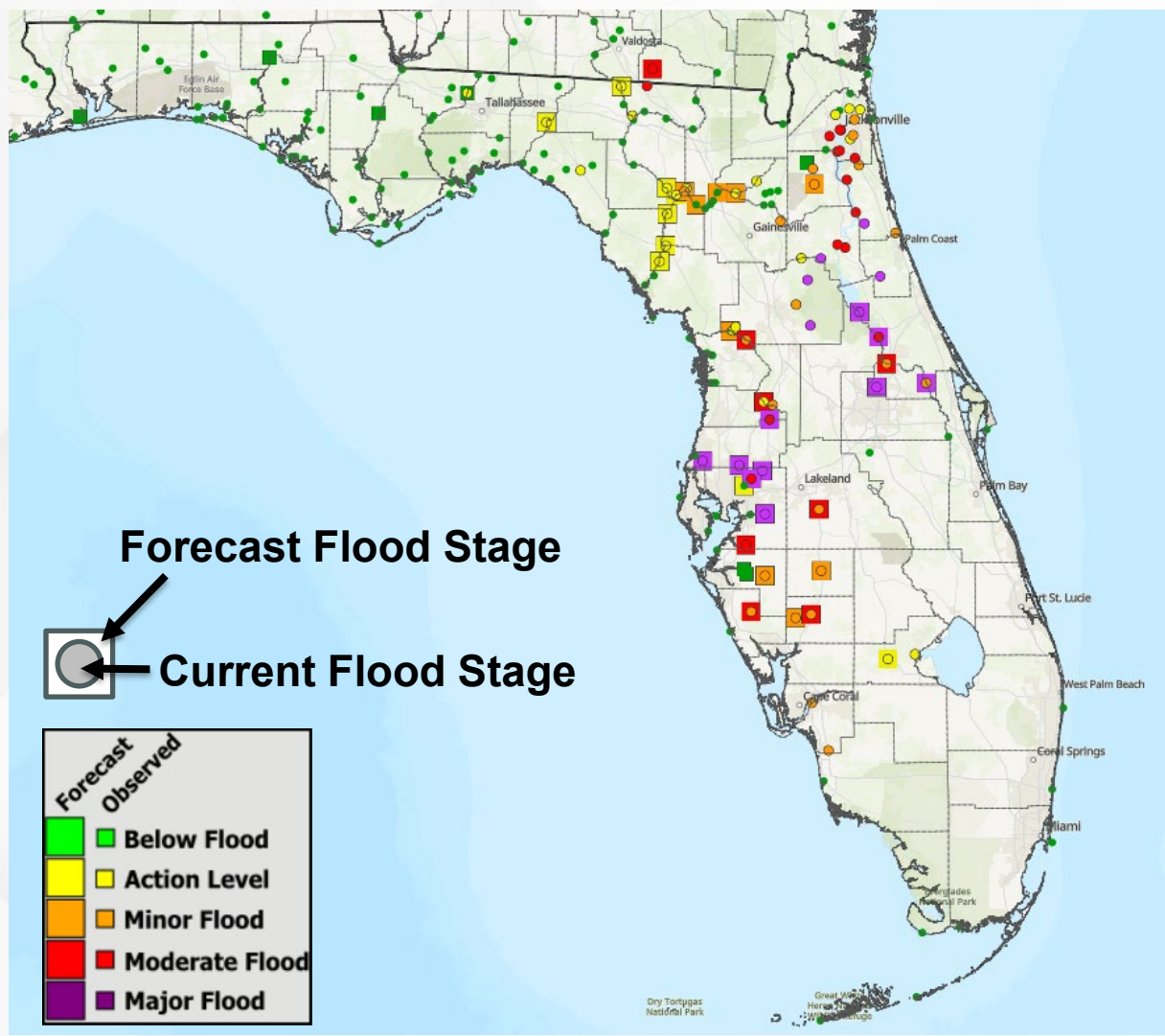


- Mostly sunny and pleasant conditions expected statewide through the weekend and into next week.
- Isolated to widely scattered showers and thunderstorms will continue to be possible across eastern and southern portions of the Peninsula and along the Keys today and Saturday.
- More scattered shower and thunderstorm activity can be expected across South Florida and the Keys Sunday into next week as a frontal boundary shifts northward.
- Widespread rainfall totals near 2-4" are expected across South Florida and northward along the Treasure Coast with **locally higher totals up to 4-7"** possible.



Current & Forecast River Conditions

From the National Weather Service



Heavy and widespread rainfall from Hurricane Milton has already led to a riverine response across numerous basins extending from West-Central Florida, Central Florida and Northeast Florida. **Widespread moderate to major riverine flooding** has developed and is expected to continue for the next several days as above normal streamflows continue, and **some rivers are forecast to approach or break record levels**.

Major Flood Stage is ongoing along the [Anclote River near Elfers at Little Road](#), [Cypress Creek at SR-54](#), [Hillsborough River near Zephyrhills](#), [Alafia River at Lithia Pinecrest Road at Lithia](#), [St. Johns River at Astor](#), and [Little Wekiva River near Altamonte Springs](#).

Moderate flooding is ongoing along the [Hillsborough River at Morris Bridge](#) and [St. Johns River near Deland](#) and **minor flooding** is ongoing along the [Withlacoochee River at US-301 Trilby](#) and [St. Johns River above Lake Harney](#). All these rivers are forecast to rise into **Major Flood Stage** within the next few days.

Along the St. Johns River, numerous tidal points for the lower St. Johns are also within **Moderate to Major Flood Stage**.

Water levels have reached **Minor Flood Stage** along the [Withlacoochee River near Holder at SR-200](#), [Myakka river at Myakka River State Park](#), [Horse Creek near Arcadia SR-72](#), Peace River ([at SR-60 Bartow](#) and [at SR-70 Arcadia](#)), and the [St. Johns River near Sanford](#) and are forecast to continue rising, reaching **Moderate Flood Stage** in the coming days.

Moderate flooding continues along the [Little Manatee near Wimauma](#) and **minor flooding** continues along the [Manatee River near Myakka Head at SR-64](#) and [South Fork Black Creek near Penney Farms](#) as water levels gradually decline.

Minor flooding is occurring or forecast along the [Withlacoochee River at US-41 Dunnellon](#) [Peace River at Zolfo Springs](#), and Santa Fe River ([Three Rivers Estates](#), [Fort White](#), [O'leno](#), [Worthington Springs](#)).

For more details, please visit the [River Forecast Center](#).



River Flood Warnings

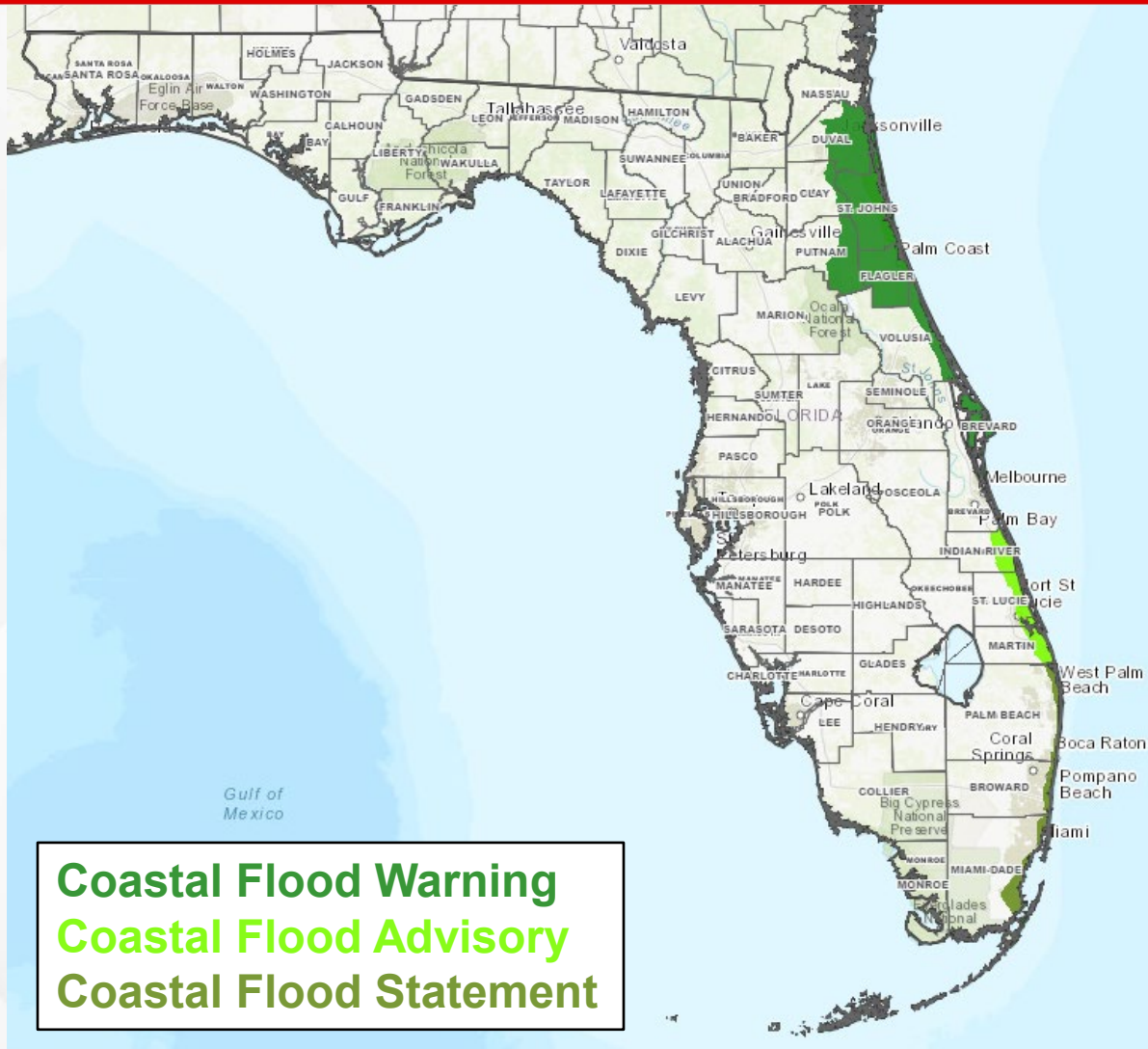
From the National Weather Service

River Gauge	County(ies) Affected	Current Level	Crest Level	Record Level	Status	Crest Day	Warning Expires
Alafia River at Lithia Pinecrest Road at Lithia	Hillsborough	Major: 24.09 ft	Major: 25.50 ft	28.50 ft	Rising	11-Oct	Until Further Notice
Anclote River near Elfers at Little Road	Pasco	Major: 26.55 ft	Major: 27.00 ft	27.70 ft	Cresting	11-Oct	Until Further Notice
Cypress Creek at SR-54	Pasco	Major: 13.09 ft	Major: 15.00 ft	13.80 ft	Rising	14-Oct	Until Further Notice
Hillsborough River near Zephyrhills	Hillsborough	Major: 17.07 ft	Major: 17.14 ft	15.30 ft	Cresting	11-Oct	Until Further Notice
Hillsborough River at Morris Bridge	Hillsborough	Moderate: 35.91 ft	Major: 36.40 ft	34.70 ft	Rising	13-Oct	Until Further Notice
Horse Creek near Arcadia at SR-72	DeSoto	Minor: 14.35 ft	Moderate: 14.37 ft	21.20 ft	Cresting	11-Oct	Until Further Notice
Little Manatee River near Wimauma at US-301	Hillsborough	Moderate: 16.72 ft	Major: 17.12 ft	20.10 ft	Falling	Crested	Until Further Notice
Manatee River near Myakka Head at SR-64	Manatee	Minor: 13.80 ft	Moderate: 15.77 ft	20.90 ft	Falling	Crested	1600 EDT 12-Oct
Myakka River at Myakka River State Park	Sarasota	Minor: 8.19 ft	Moderate: 9.30 ft	12.80 ft	Rising	13-Oct	Until Further Notice
Peace River at SR-60 Bartow	Polk	Minor: 8.28 ft	Moderate: 9.40 ft	11.10 ft	Rising	15-Oct	Until Further Notice
Peace River at Zolfo Springs	Hardee	Minor: 18.23 ft	Minor: 19.00 ft	27.20 ft	Rising	13-Oct	Until Further Notice
Peace River at SR-70 Arcadia	DeSoto	Minor: 13.35 ft	Moderate: 14.10 ft	23.70 ft	Rising	13-Oct	Until Further Notice
Santa Fe River at Three Rivers Estates	Columbia, Gilchrist, Suwannee	Minor: 18.81 ft	Minor: 19.60 ft	33.40 ft	Rising	15-Oct	Until Further Notice
Santa Fe River near Fort White	Columbia, Gilchrist	Below: 21.50 ft	Minor: 23.80 ft	35.40 ft	Rising	15-Oct	No Warning Issued
Santa Fe River at O'leno State Park	Alachua, Columbia	Below: 39.82 ft	Minor: 44.50 ft	57.10 ft	Rising	13-Oct	Until Further Notice
Santa Fe at Worthington Springs	Alachua, Bradford, Union	Action: 56.74 ft	Minor: 59.40 ft	71.20 ft	Rising	12-Oct	2000 EDT 14-Oct
South Fork Black Creek near Penney Farms	Clay	Minor: 15.38 ft	Minor: 16.86 ft	29.40 ft	Falling	Crested	2130 EDT 11-Oct
St. Johns River at Astor	Volusia, Lake	Major: 4.77 ft	Major: 4.80 ft	4.70 ft	Rising	11-Oct	Until Further Notice
St. Johns River near Deland	Lake	Moderate: 5.15 ft	Major: 5.70 ft	6.30 ft	Rising	TBD	Until Further Notice
St. Johns River near Sanford	Seminole	Minor: 6.01 ft	Moderate: 7.70 ft	9.00 ft	Rising	TBD	Until Further Notice
St. Johns River above Lake Harney	Seminole, Volusia	Minor: 8.21 ft	Major: 10.00 ft	12.70 ft	Rising	13-Oct	Until Further Notice
Little Wekiva River near Altamonte Springs 2N	Seminole	Major: 29.92 ft	Major: 30.08 ft	31.1 ft	Steady	Crested	Until Further Notice
Withlacoochee River at US-41 Dunnellon	Citrus, Marion	Below: 28.60 ft	Minor: 29.80 ft	33.00 ft	Rising	15-Oct	Until Further Notice
Withlacoochee River near Holder	Cirtus	Minor: 8.27 ft	Moderate: 10.00 ft	13.30 ft	Rising	14-Oct	Until Further Notice
Withlacoochee River at Croom	Pasco, Sumter	Action: 8.94 ft	Moderate: 11.20 ft	15.20 ft	Rising	15-Oct	Until Further Notice
Withlacoochee River at US-301 Trilby	Hernando, Pasco	Moderate: 14.92 ft	Major: 16.80 ft	20.40 ft	Rising	TBD	Until Further Notice



Coastal Flooding

From the National Weather Service (NWS)



Coastal Flood Warnings remain in effect through Saturday morning along portions of the First Coast and through this afternoon along portions of the Space and Treasure Coasts as breezy onshore winds, high surf, and already elevated tides along the East Coast in the wake of Hurricane give way to continued instances of **significant coastal flooding**.

Coastal Flood Warnings are also in effect along the St. Johns River Basin through Sunday morning as heavy rainfall filtering in and trapped tides within the basin give way to **significant coastal flooding**.

Minor to moderate coastal flooding will likely persist even at times of low tide along the St. Johns River Basin and will be possible at times of low tide along portions of the Northeast Coast.

A **Coastal Flood Advisory** has been issued for Friday afternoon through Saturday morning along coastal St. Johns and Flagler County for **minor coastal flooding** during times of high tide.

Coastal Flood Advisories and Statements extend through the Southeast Coast and Keys as **minor to locally moderate coastal flooding** near and at times of high tide.

Some **shoreline erosion** will also be possible along these impacted coastlines.



Summary

FOUO – For Government Official Use Only

Tropical Storm Leslie:

- As of 11:00 AM EDT, Leslie is located about 1,585 miles west-southwest of the Azores and is moving north-northeastward at 10 mph.
- A turn toward the north-northeast is expected later today, followed by a turn to the northeast with an increase in forward speed through the weekend.
- Maximum sustained winds are near 50 mph.
- Gradual weakening is forecast to continue, and Leslie is expected to become a post-tropical cyclone in a couple of days.
- *Leslie poses no threat to Florida.*

Eastern Tropical Atlantic – Invest 94L:

- Very recent satellite-derived wind data indicate that winds to tropical storm-force are occurring over portions of the Cabo Verde Islands in association with an area of low pressure centered near the southwestern portion of the archipelago.
- However, the satellite data showed that the circulation is elongated, and the associated shower and thunderstorm activity remains disorganized.
- Some additional development is possible, and a short-lived tropical storm could form while the system moves westward or west-northwestward at 10-15 mph across the Cabo Verde Islands and eastern tropical Atlantic today.
- On Saturday, environmental conditions are forecast to become less conducive, and further development appears unlikely after that time.
- The NHC is outlooking a **medium (50%) chance of development** over the next 48 hours, and a **medium (50%) chance of development** over the next 7 days.
- *This system poses no direct threat to Florida over the next 7-10 days at least.*

Florida Outlook:

- Mostly sunny and pleasant conditions expected statewide today with isolated to widely scattered showers and thunderstorms possible across eastern and southern portions of the Peninsula.
- High temperatures in the upper 70s to low 80s across North Florida and middle to upper 80s elsewhere; Heat indices in the low to middle 90s possible across the far southern Peninsula and Keys.
- Low temperatures in the upper 40s to middle 50s across the Florida Panhandle, middle 50s to low 60s across the Suwannee Valley, upper 60s to low 70s along the Northeast Coast and Central Florida, and middle to upper 70s across South Florida and the Keys.
- Breezy northeasterly winds near 10-20 mph with gusts upward of 20-30 mph will persist along the Peninsula and Keys throughout the day.
- Heavy and widespread rainfall from Hurricane Milton has already led to a riverine response across numerous basins extending from West-Central Florida, Central Florida and Northeast Florida.
 - **Widespread moderate to major riverine flooding** has developed and is expected to continue for the next several days as above normal streamflows continue, and some rivers are forecast to **approach or break record levels**.
- Breezy onshore winds, high surf, and already elevated tides along the East Coast in the wake of Hurricane Milton continue to result in instances of coastal flooding.
 - **Coastal Flood Warnings** in effect along portions of the First, Space, and Treasure Coasts and along the St. Johns River Basin through Saturday morning for **significant coastal flooding** possible; **Minor to moderate** coastal flooding will likely persist even at times of low tide along the St. Johns River Basin.
 - A **Coastal Flood Advisory** has been issued for Friday afternoon through Saturday morning along coastal St. Johns and Flagler County for **minor coastal flooding** during times of high tide.
 - **Coastal Flood Advisories and Statements** extend through the Southeast Coast and Keys as **minor to locally moderate coastal flooding** near and at times of high tide.
 - Some **shoreline erosion** will also be possible along these impacted coastlines.

The next briefing packet will be issued on Sunday Morning. For the latest information, please visit the National Hurricane Center website.



Tropical Update

FOUO – For Government Official Use Only



Created by:

Caitlyn Gillespie, Deputy State Meteorologist

Caitlyn.Gillespie@em.myflorida.com

State Meteorological Support Unit

Florida Division of Emergency Management

Users wishing to subscribe (approval pending) to this distribution list, register at:

https://public.govdelivery.com/accounts/FLDEM/subscriber/new?topic_id=SERT_Met_Tropics.

Other reports available for subscription are available at:

<https://public.govdelivery.com/accounts/FLDEM/subscriber/new?preferences=true>