



# Tropical Update



12:15 PM EDT

Sunday, October 6, 2024

## Tropical Storm Milton

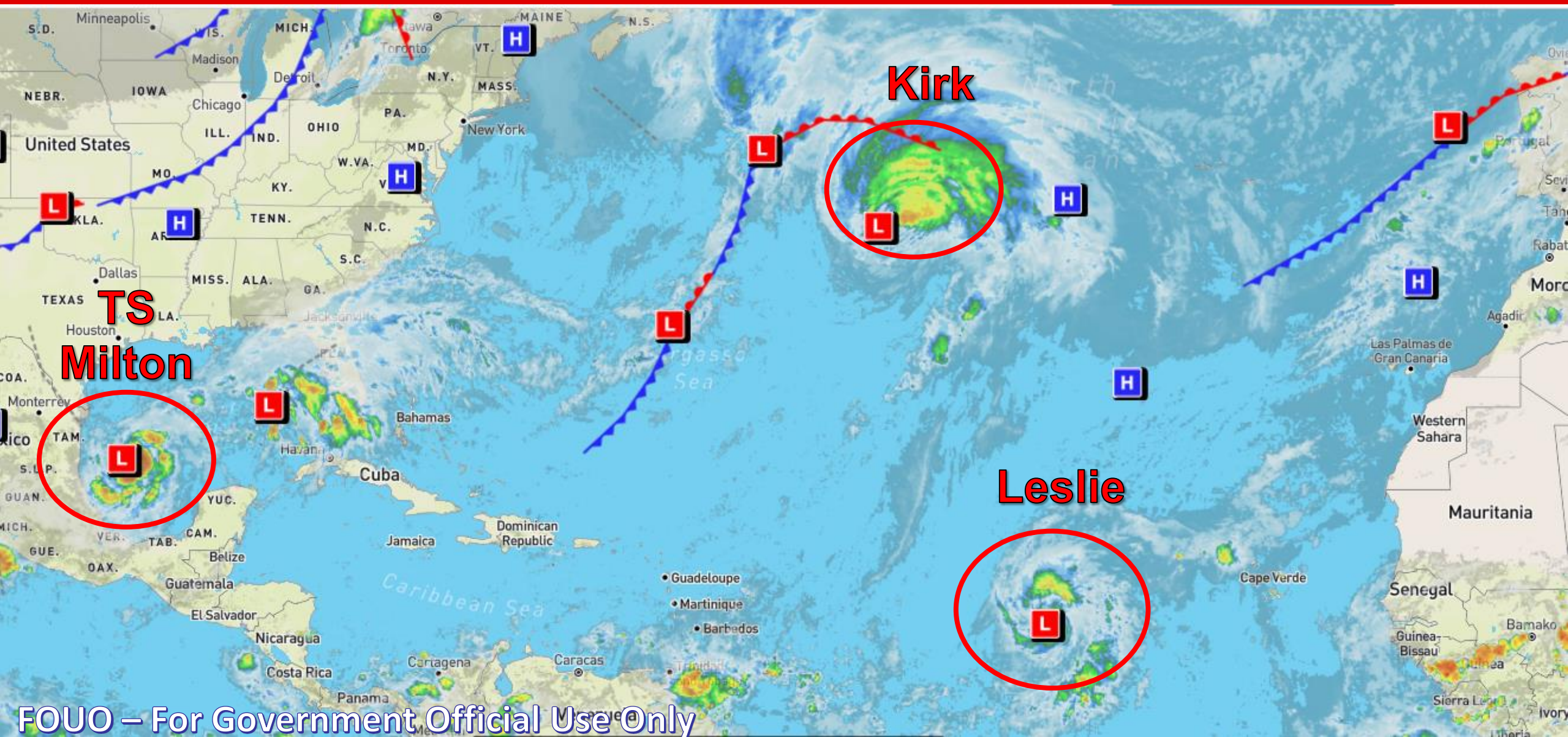
### Increasing Risk for Life-Threatening Impacts Along Florida West Coast; Milton Forecast to Become a Hurricane Later Today

This update is intended for government and emergency response officials, and is provided for informational and situational awareness purposes only. Forecast conditions are subject to change based on a variety of environmental factors. For additional information, or for any life safety concerns with an active weather event please contact your County Emergency Management or Public Safety Office, local National Weather Service forecast office, or visit the National Hurricane Center website at [www.hurricanes.gov](http://www.hurricanes.gov).



# Atlantic Basin Satellite Image

Chance of development:    None    Low    Medium    High

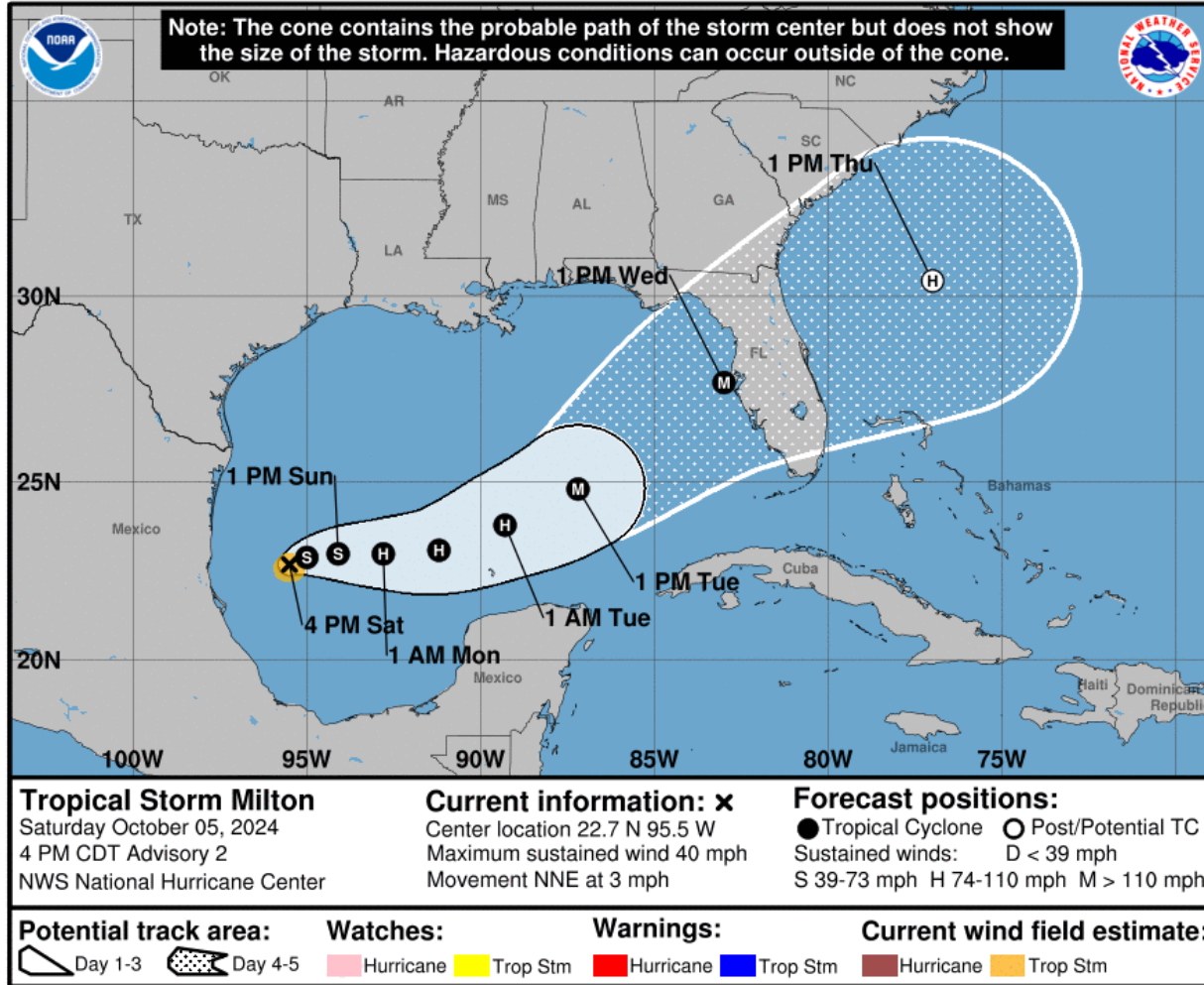






# Tropical Storm Milton

## From the National Hurricane Center (NHC)

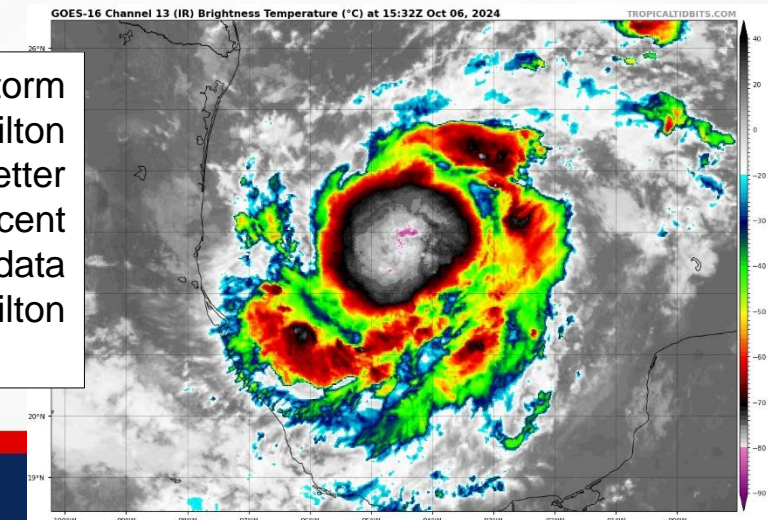


- **Location:** 310 miles WNW of the Progreso, Mexico; 835 miles WSW of Tampa, Florida
- **Maximum Sustained Winds:** 65 mph
- **Current Movement:** ESE at 6 mph

This general east-southeastward motion near 6 mph can be expected today. An eastward to east-northeastward motion is forecast on Monday, followed by a faster northeastward motion on Tuesday and Wednesday. On the forecast track, Milton is forecast to move north of the Yucatan Peninsula and to move across the Gulf of Mexico and approach the west coast of the Florida Peninsula by midweek. Milton is forecast to rapidly intensify during the next couple of days and become a hurricane later today and a major hurricane late Monday.

*Milton is forecast to quickly intensify while it moves eastward to northeastward across the Gulf of Mexico and be at or near major hurricane strength when it reaches West Florida midweek. There is an increasing risk of life-threatening storm surge and wind impacts for the Florida West Coast beginning late Tuesday or Wednesday.*

Shower and thunderstorm activity associated with Milton continue to become better defined and organized. Recent Hurricane Hunter Aircraft data shows an eyewall within Milton has formed.





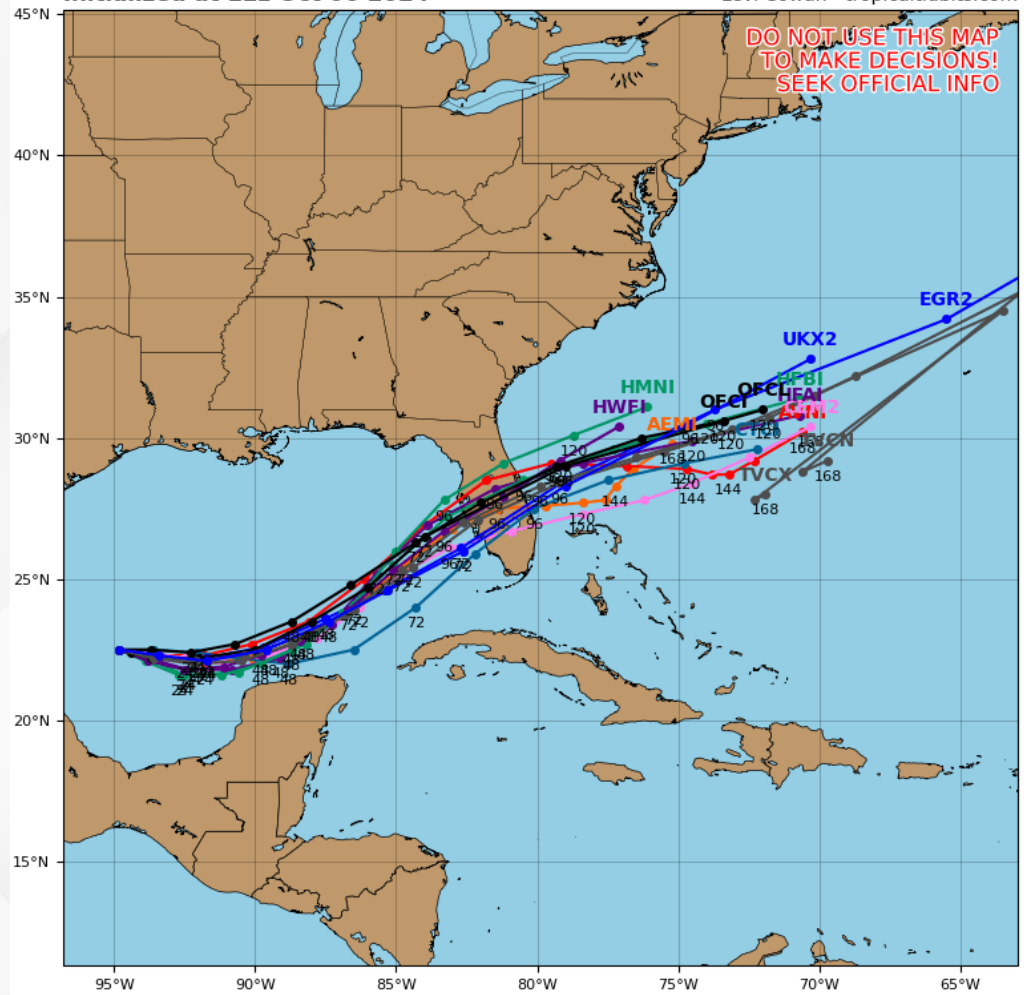
# Forecast Computer Models – Next 5 Days

## Tropical Storm Milton

### Tropical Storm MILTON Model Track Guidance

Initialized at 12z Oct 06 2024

Levi Cowan - tropicaltidbits.com



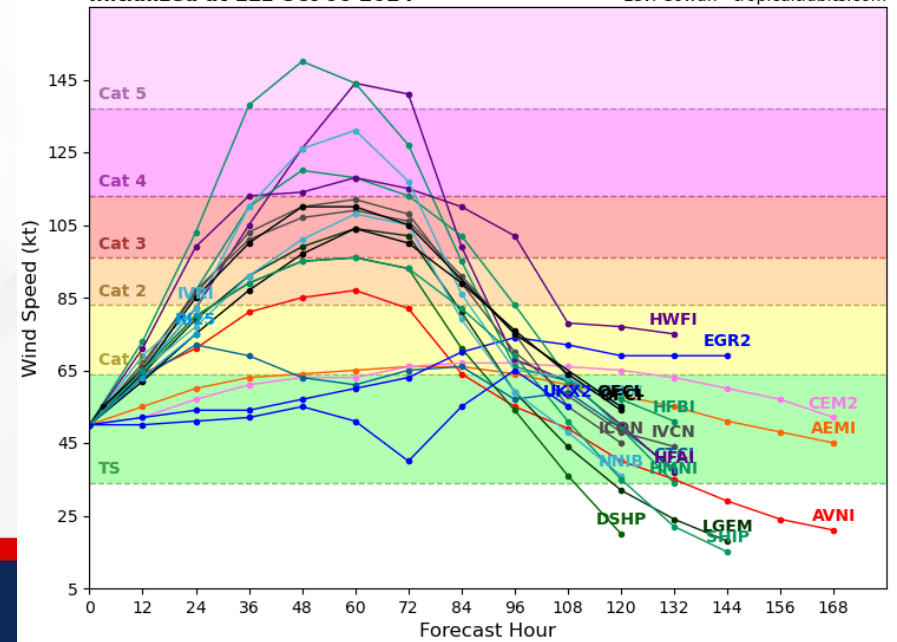
Recent observations and Hurricane Hunter aircraft data indicate that Milton is slightly further south than previously. Computer forecast model guidance shows Milton is forecast to move slightly more south due to an upper-level disturbance over the northern Gulf of Mexico but continue to move slowly through the next 24 hours. The system should begin turn toward the northeast and begin accelerating Tuesday and Wednesday towards the Florida Peninsula. While timeline disparity across computer models persist, a little faster motion is forecast early next week. Overall guidance this morning has nudged Milton's eventual path south with a little slower forward motion. Changes to the eventual track can be expected, it is important not to focus on single model runs or solutions!

Computer forecast models continue to support favorable atmospheric and oceanic conditions across the Gulf of Mexico, allowing for Milton to steadily and rapidly strengthen. There remains uncertainty regarding the intensity of Milton as it approaches the Florida West Coast due to an increase in upper-level winds developing midweek. There also remains quite a bit of uncertainty regarding the intensity of Milton; however, trends have shown that the system could become a hurricane in about 12-24 hours and a major hurricane in about 36-60 hours. Upward adjustments in the intensity could be required if computer forecast models continue their trend. Regardless, there is increasing confidence that a powerful hurricane with life-threatening hazards will be affect portions of the Florida west coast around the middle of the week.

### Tropical Storm MILTON Model Intensity Guidance

Initialized at 12z Oct 06 2024

Levi Cowan - tropicaltidbits.com

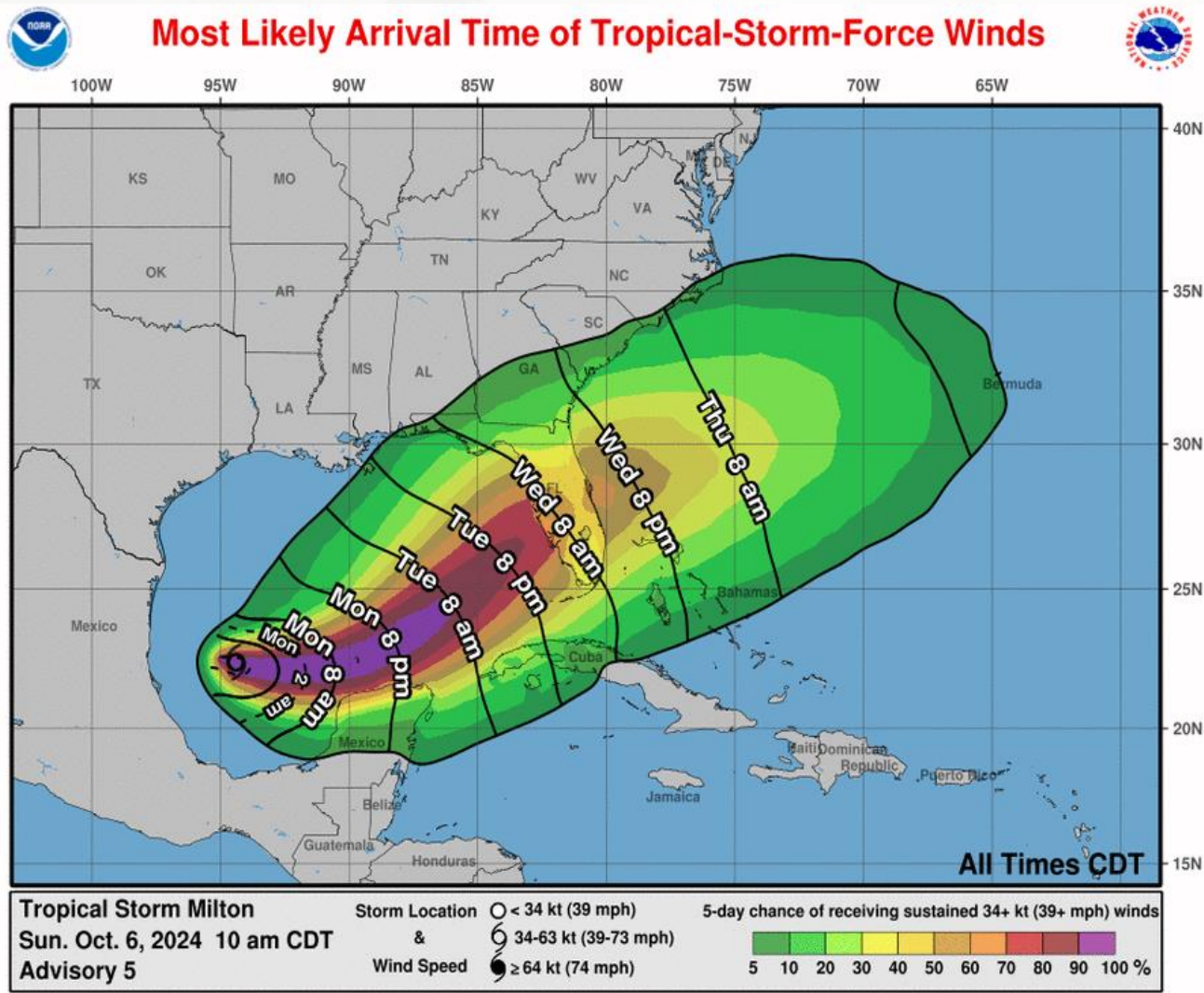






# Timing of Arrival

## From the National Hurricane Center (NHC)



- Tropical storm-force conditions will most likely arrive along the West Florida coastline early Wednesday morning, and spreading eastward across the Florida Peninsula through the Wednesday daytime hours.
- Tropical storm-force winds could arrive as early as Tuesday evening along the western Florida Peninsula.
- Probabilities (*shaded*) will continue to increase as Milton's landfall is closer in the forecast period.
- There remains quite a bit of uncertainty regarding the forward speed and progression of Milton, and thus the arrival time of tropical hazards; changes to the eventual track and timeline can be expected, it is important not to focus on single model runs or solutions!



# Key Messages

## From the National Hurricane Center (NHC)



### Key Messages for Tropical Storm Milton Advisory 5: 10:00 AM CDT Sun Oct 06, 2024



1. Milton is forecast to quickly intensify while it moves eastward to northeastward across the Gulf of Mexico and be a major hurricane when it reaches the west coast of the Florida Peninsula mid week. Users are reminded to not focus on the details of the forecast as there remains significant uncertainty in the eventual track and intensity of Milton.

2. While it is too soon to specify the exact magnitude and location of the greatest impacts, there is an increasing risk of life-threatening storm surge and damaging winds for portions of the west coast of the Florida Peninsula beginning Tuesday night or early Wednesday. Storm Surge and Hurricane Watches could be issued later today or tonight. Residents in the Florida Peninsula should follow any advice given by local officials and check back for updates to the forecast.

3. Areas of heavy rainfall will impact portions of Florida today and Monday well ahead of Milton, with heavy rainfall more directly related to the system expected later on Tuesday through Wednesday night. This rainfall will bring the risk of flash, urban, and areal flooding, along with the potential of moderate to major river flooding.

4. Tropical storm conditions are expected beginning Monday across portions of the northern Yucatan Peninsula of Mexico where a Tropical Storm Warning is in effect.



For more information go to [hurricanes.gov](https://hurricanes.gov)

FOUO – For Government Official Use Only





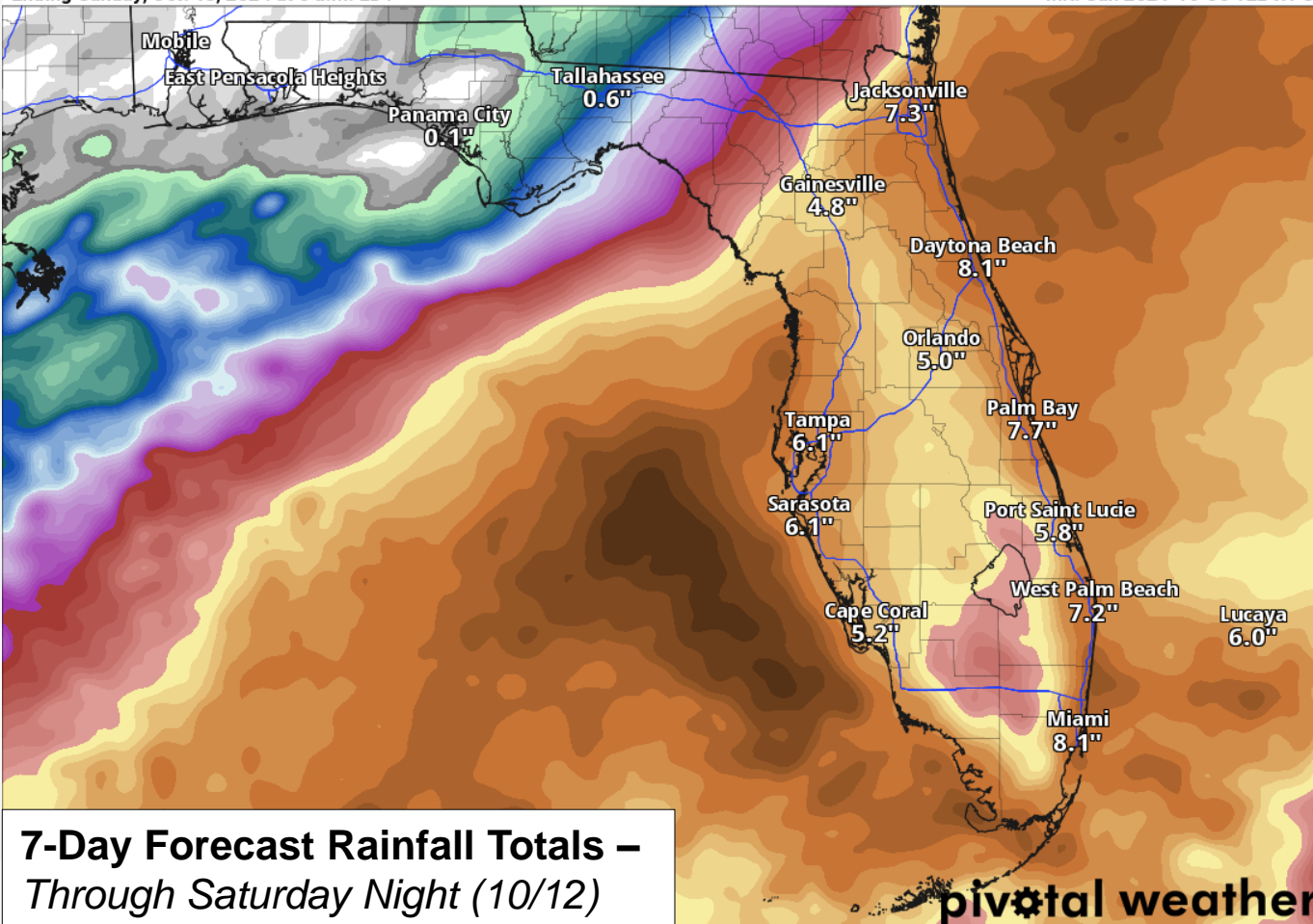
# Rainfall Totals – Next 7 Days

## From the Weather Prediction Center (WPC)

### 7-Day Precipitation (in)

Ending Sunday, Oct. 13, 2024 at 8 a.m. EDT

Init: Sun 2024-10-06 12z WPC



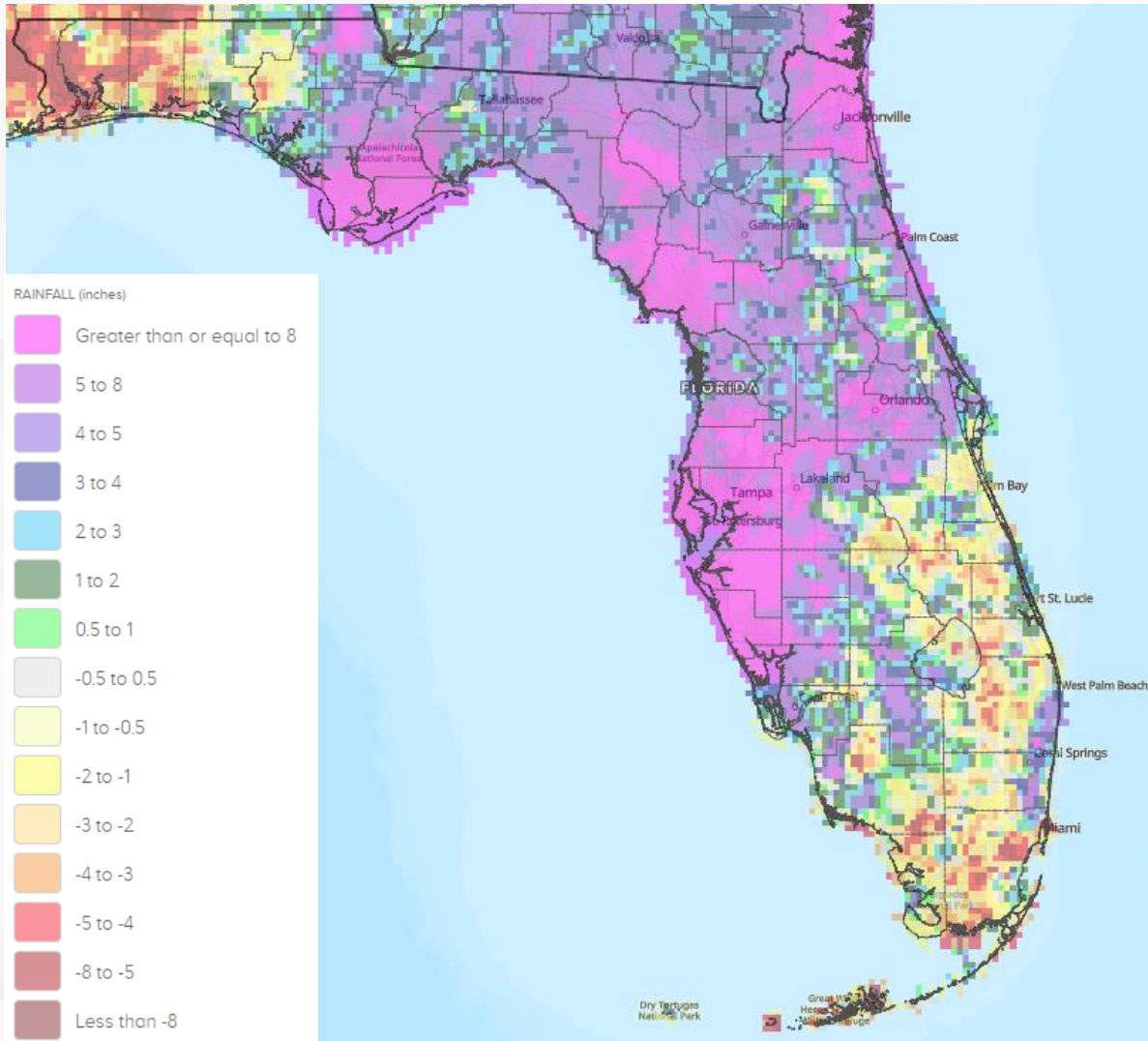
**7-Day Forecast Rainfall Totals –**  
*Through Saturday Night (10/12)*

- A frontal boundary is expected to push into the state this weekend kicking off a wet and active weather pattern across the Peninsula, even prior to tropical impacts.
- *Rainfall totals heavily tied to the eventual track and forward speed of the system. With computer model guidance uncertainty regarding the exact track, there remains uncertainty as to where the heaviest rainfall can be expected.*
- Widespread rainfall totals near 5-8" with **locally higher totals in excess of 8-12"** are possible across portions of the Peninsula.
  - Computer models are indicating the heaviest rainfall totals may occur along and near the I-4 corridor through Central and South Florida; however, the exact placement of these more significant totals will continue to be modified depending on the tropical disturbance's organization and track.
  - Drier air circulating along the southern side of the system as it moves across the Peninsula will keep heavy rainfall along the northern side of the system, allowing for widespread rainfall to extend into Northeast Florida.
  - **Please continue to stay tuned for the latest computer forecast model guidance and trends in the subsequent days.**



# 60-Day Rainfall Departure From Normal

## From the National Weather Service



Much of the Big Bend and Northern Peninsula southward through the I-4 corridor and into West-Central and Southwest Florida have experienced rainfall totals greater than 5-10" above normal over the past 60-days. More localized areas have seen rainfall totals near 10-15" above normal over the past 60-days across with isolated higher totals near 15-20" over the past 60 days across portions of Apalachicola, the Suwannee Valley, Northeast Florida, and West-Central Florida.

Numerous North, West-Central, and Southwest Florida rivers are already running high and/or within flood stage at this time.

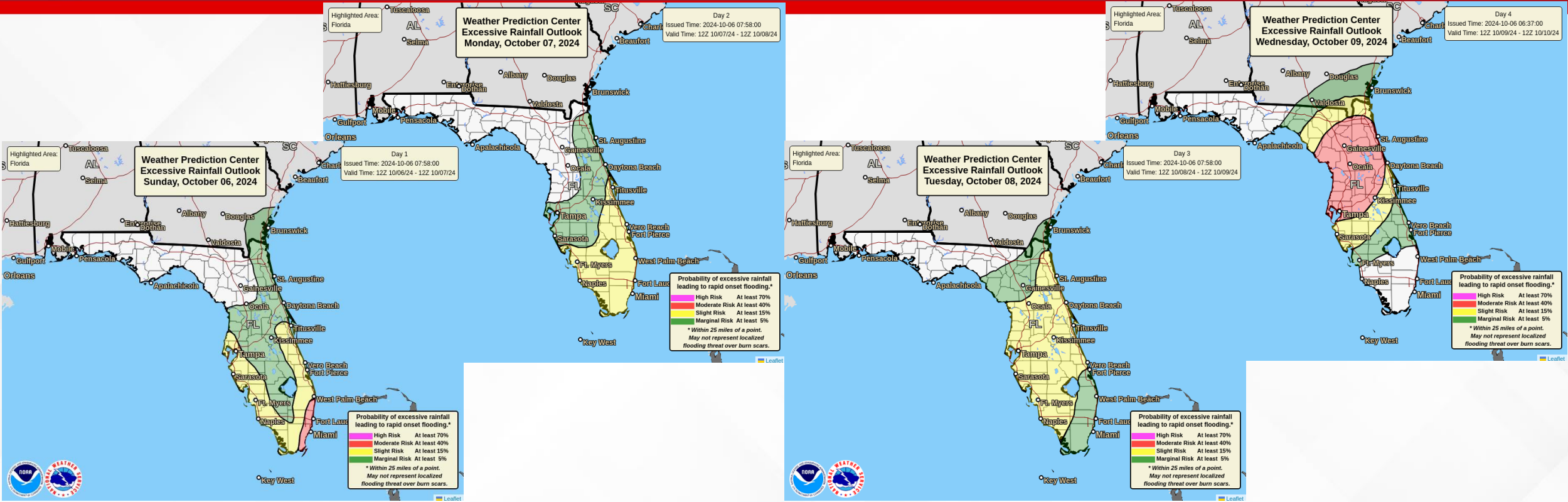
Saturated areas will be more vulnerable to heavy rainfall and a faster onset of flooding.





# Flash Flood Outlooks – Next 5 Days

## From the Weather Prediction Center (WPC)

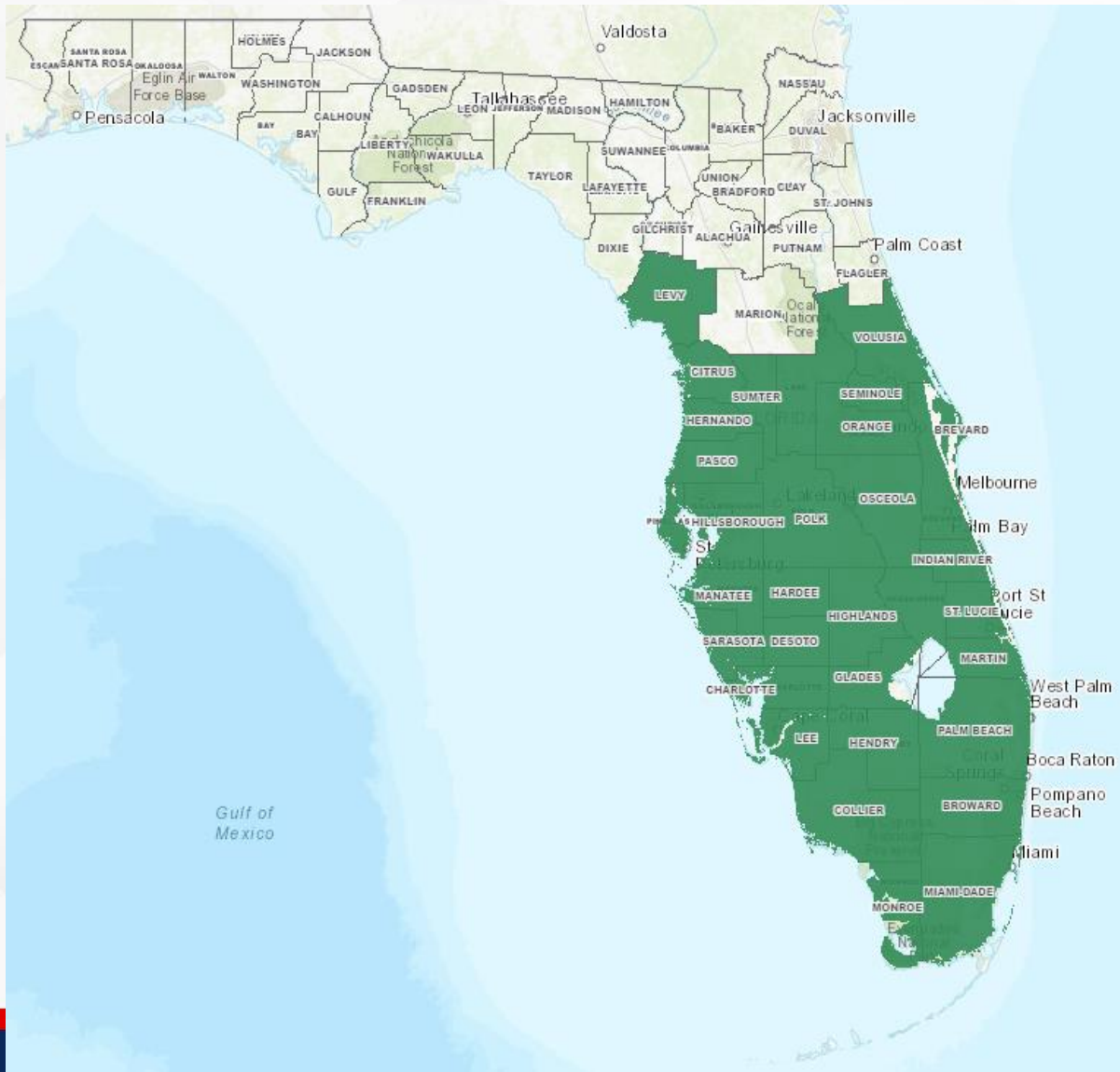


The Weather Prediction Center (WPC) is outlooking a **Moderate Risk (level 3 of 4) for Flash Flooding** along the Southeast Florida Metro on Sunday with a **Slight Risk (level 2 of 4)** along the coastal Peninsula and a **Marginal Risk (level 1 of 4)** extending for Sunday due to tropical moisture associated with an upper-level disturbance separate from Tropical Storm Milton. Widespread rainfall can be expected on Sunday and continue into next week before Tropical Storm Milton approaches the Florida West Coast midweek. Widespread heavy rainfall can be expected to continue on Monday and into Tuesday ahead of the outer bands of Milton, and the Weather Prediction Center (WPC) is outlooking a **Slight Risk (level 2 of 4)** south of the I-4 corridor on Monday and throughout most of the Peninsula and towards Northeast Florida on Tuesday. Coastal locations along the West Coast experienced flooding (both tidal and rainfall) due to Major Hurricane Helene, and any coastal or low-lying areas will remain vulnerable to additional rounds of rainfall. Heavy rainfall rates will also be a concern over already saturated and vulnerable soils; ponding water and instances of flooding will be possible, especially throughout the urban and poor drainage/low-lying areas in the Florida Peninsula. There remains uncertainty as to where the heaviest rainfall will fall as Tropical Storm Milton approaches and crosses the Florida Peninsula around mid-week. The Weather Prediction Center (WPC) is outlooking a **Moderate Risk (level 3 of 4) for Flash Flooding** across Nature Coast and inland towards Northeast Florida, including both the northern I-75 corridor and the entire I-4 corridor, with a **Slight Risk (level 2 of 4)** extending into portions of the Big Bend and Southwest Florida. Additional **Flood Watches** will likely be issued as details become clearer.



# Flood Watches

From the National Weather Service (NWS)



**Flood Watches** have been issued for the Florida Peninsula, spanning from the Nature Coast to along and south of the I-4 corridor beginning today until Thursday morning. This impacts the following counties:

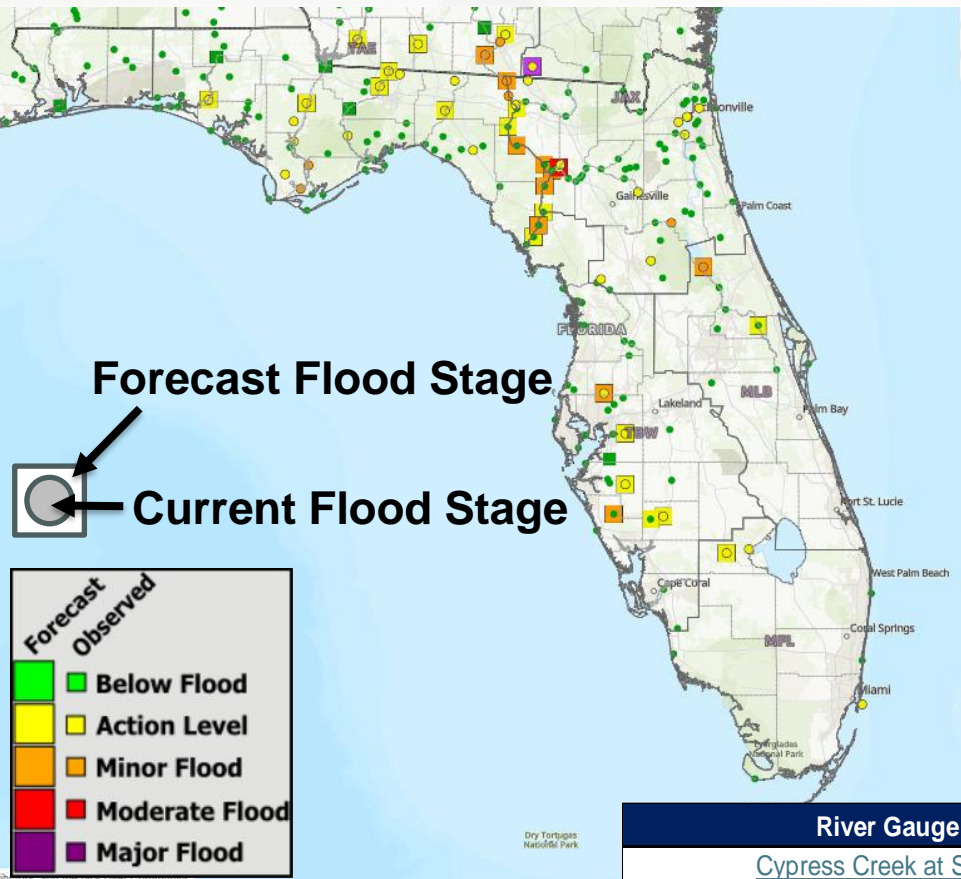
<b>Levy</b>	<b>Volusia</b>	<b>Citrus</b>	<b>Hernando</b>
<b>Pasco</b>	<b>Pinellas</b>	<b>Hillsborough</b>	<b>Manatee</b>
<b>Sarasota</b>	<b>Charlotte</b>	<b>Lee</b>	<b>Collier</b>
<b>Monroe</b>	<b>Hendry</b>	<b>Glades</b>	<b>Highlands</b>
<b>Hardee</b>	<b>DeSoto</b>	<b>Polk</b>	<b>Sumter</b>
<b>Lake</b>	<b>Seminole</b>	<b>Orange</b>	<b>Osceola</b>
<b>Brevard</b>	<b>Okeechobee</b>	<b>Indian River</b>	<b>St. Lucie</b>
<b>Martin</b>	<b>Palm Beach</b>	<b>Broward</b>	





# Current & Forecast River Conditions

From the National Weather Service



**River Flood Warnings** remain in effect along the [St. Johns River at Astor](#) as water levels will remain within minor flood stage over the next several days as heavy rainfall occurs over trapped water levels within the basin.

The [Aucilla River at Lamont](#) is forecast to gradually rise near or just above **minor flood stage** over the next couple of days with widespread rainfall anticipated. The lower Withlacoochee and the middle Suwannee Rivers will continue to rise over the next several days into **minor flood stage**. The [Withlacoochee River near Pinetta \(CR-150\)](#) has crested with the flood wave progressing down the Suwannee River well into next week and water levels will slowly decline. Flood waters continue to travel down the Suwannee, with backwater flooding possible up the [Santa Fe River including at Three Rivers Estates](#) by late weekend; additional **minor to moderate riverine flooding** will be possible.

**River Flood Warnings** are also in effect for the [Manatee River near Myakka Head at SR-64](#), [Myakka River at Myakka River State Park](#), [Little Manatee at Wimauma](#), and [Cypress Creek at SR-54](#) as **minor flooding** is occurring or forecast due to recent locally heavy rainfall and additional heavy rainfall anticipated this weekend and into next weekend ahead of Milton, then Milton could also bring additional heavy rainfall.

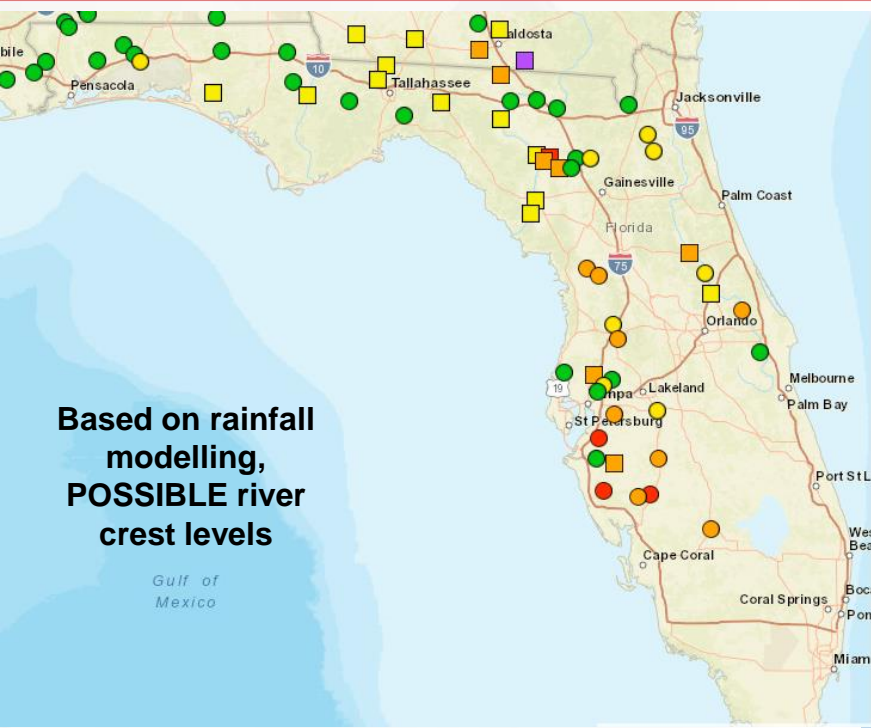
For more details, please visit the [River Forecast Center](#).

River Gauge	County(ies) Affected	Current Level	Crest Level	Record Level	Status	Crest Date	Warning Expires
<a href="#">Cypress Creek at SR-54</a>	Pasco	Action: 7.98 ft	Minor: 8.90 ft	13.80 ft	Rising	8-Oct	Until Further Notice
<a href="#">Little Manatee River near Wimauma at US-301</a>	Hillsborough	Action: 10.00 ft	Minor: 11.60 ft	20.10 ft	Falling	5-Oct	0342 EDT 5-Oct
<a href="#">Manatee River near Myakka Head at SR-64</a>	Manatee	Action: 10.63 ft	Minor: 13.80 ft	20.90 ft	Falling	Crested	1435 EDT 5-Oct
<a href="#">Myakka River at Myakka River State Park</a>	Sarasota	Below: 6.44 ft	Minor: 7.30 ft	12.80 ft	Rising	9-Oct	Until Further Notice
<a href="#">Withlacoochee River near Pinetta</a>	Hamilton, Madison	Minor: 77.10 ft	Minor: 78.40 ft	87.80 ft	Cresting	5-Oct	1830 EDT 8-Oct
<a href="#">St. Johns River at Astor</a>	Volusia, Lake	Minor: 2.62 ft	Minor: 2.60 ft	4.70 ft	Rising	5-Oct	Until Further Notice
<a href="#">Santa Fe River at Three Rivers Estates</a>	Columbia, Gilchrist, Suwannee	Minor: 17.07 ft	Moderate: 21.90 ft	33.40 ft	Rising	13-Oct	Until Further Notice
<a href="#">Aucilla River at Lamont</a>	Jefferson, Madison, Taylor	Action: 52.96 ft	Minor: 53.00 ft	58.8 ft	Rising	6-Oct	2230 EDT 6-Oct



# Riverine Flooding

## Chance of River Flooding Based on Range of Forecast Rainfall



Based on rainfall modelling, **POSSIBLE** river crest levels



Chance of Exceedance		
30%	Level	70%
	Action	
	Minor Flood	
	Moderate Flood	
	Major Flood	
= less than 30% chance of reaching Action level		

Significant River Flooding impacts include road hazards and damage to residential, commercial, and/or agricultural areas. Evacuation may be required. Flash flooding or Minor river flooding are NOT included in this outlook. Check your local weather forecast frequently for the most up-to-date information for your area.

Shaded areas are the forecast region of the Southeast River Forecast Center

Significant River Flooding Not Expected	Significant River Flooding Possible Weather conditions indicate, without certainty that significant river flooding could occur
Significant River Flooding Likely Weather conditions indicate that significant river flood conditions can be expected	Significant River Flooding Occurring Significant river flooding is occurring at this time

Rivers, creeks/streams, and waterways across North and West-Central Florida are already running above normal for this time of year due to widespread heavy rainfall from Hurricane Debby. **River Flood Warnings** remain in effect along portions of the Withlacoochee, St. Johns, and several West-Central Florida rivers, creeks, and waterways for ongoing **minor flooding**.

Water will continue to filter through the river basins and further downstream from heavy rainfall across the Southeast U.S. from Hurricane Helene over the next few weeks. Computer models are suggesting the potential for **minor flooding** along portions of the Suwannee River as excess heavy rainfall discharge through the basin from the Georgia headwaters with **minor to moderate backwater flooding** possible along the Santa Fe River. The Alapaha River near Jennings may also see water levels rise above flood stage in the next week or so as the Alapaha River at Statenville, Georgia is forecast to crest in major flood stage early next week before the crest wave moves further downstream into Florida.

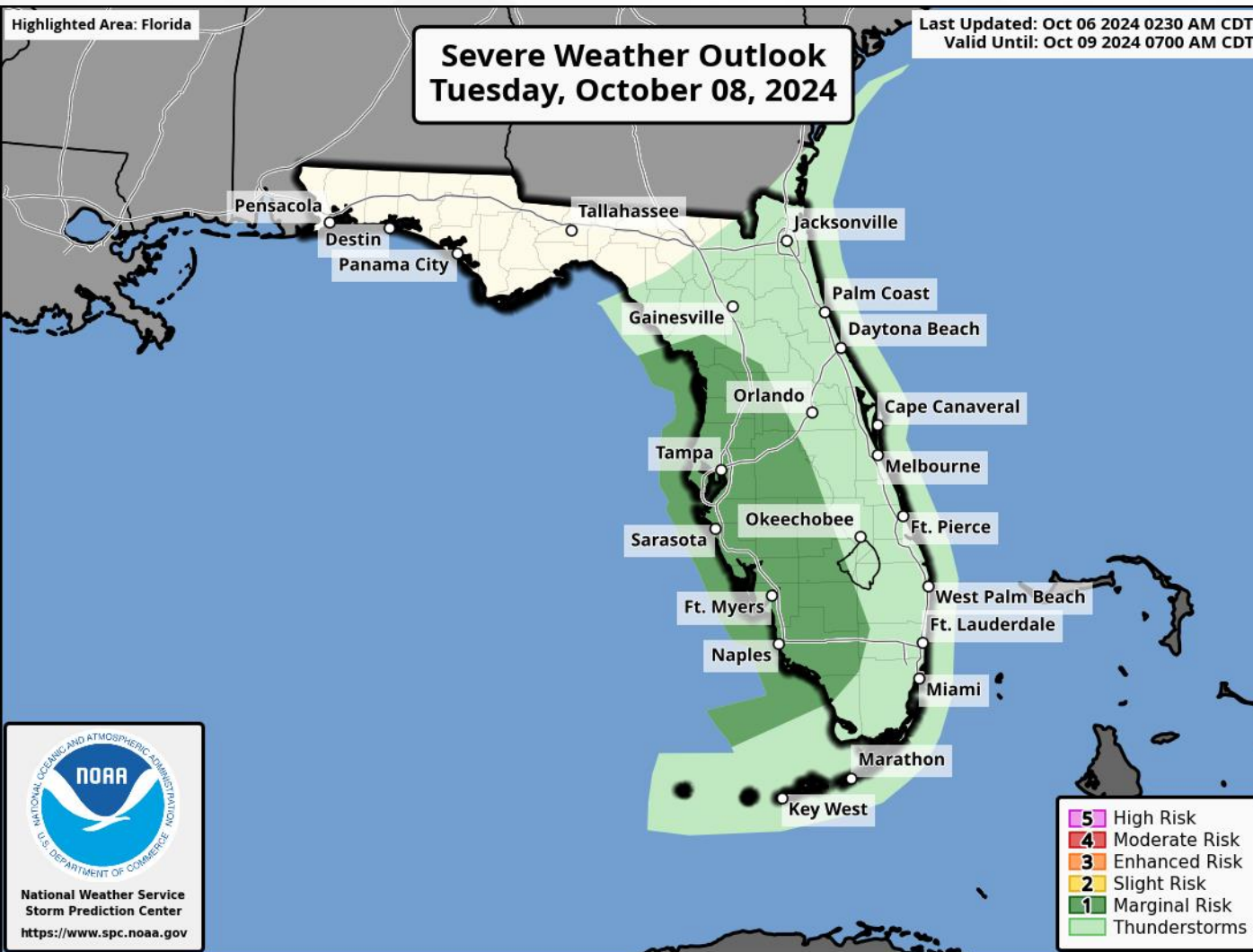
Heavy rainfall is anticipated today and next week due frontal boundary and Tropical Storm Milton, likely leading to water level rises in the Peninsula. Computer models are currently suggesting there is potential for locally **moderate flooding** along a few rivers, creeks, and waterways in West-Central Florida with more widespread **minor flooding** along the Peninsula.





# Tropical Tornadoes

## From the Storm Prediction Center (SPC)



The Storm Prediction Center (SPC) has introduced a **Marginal Risk (level 1 of 5) for Severe Weather** along much of the Florida West Coast and extending inland into portions of interior Central Florida on Tuesday as **isolated tornadoes** within Tropical Storm Milton's outer bands will be possible as the system approaches the Florida West Coast midweek.

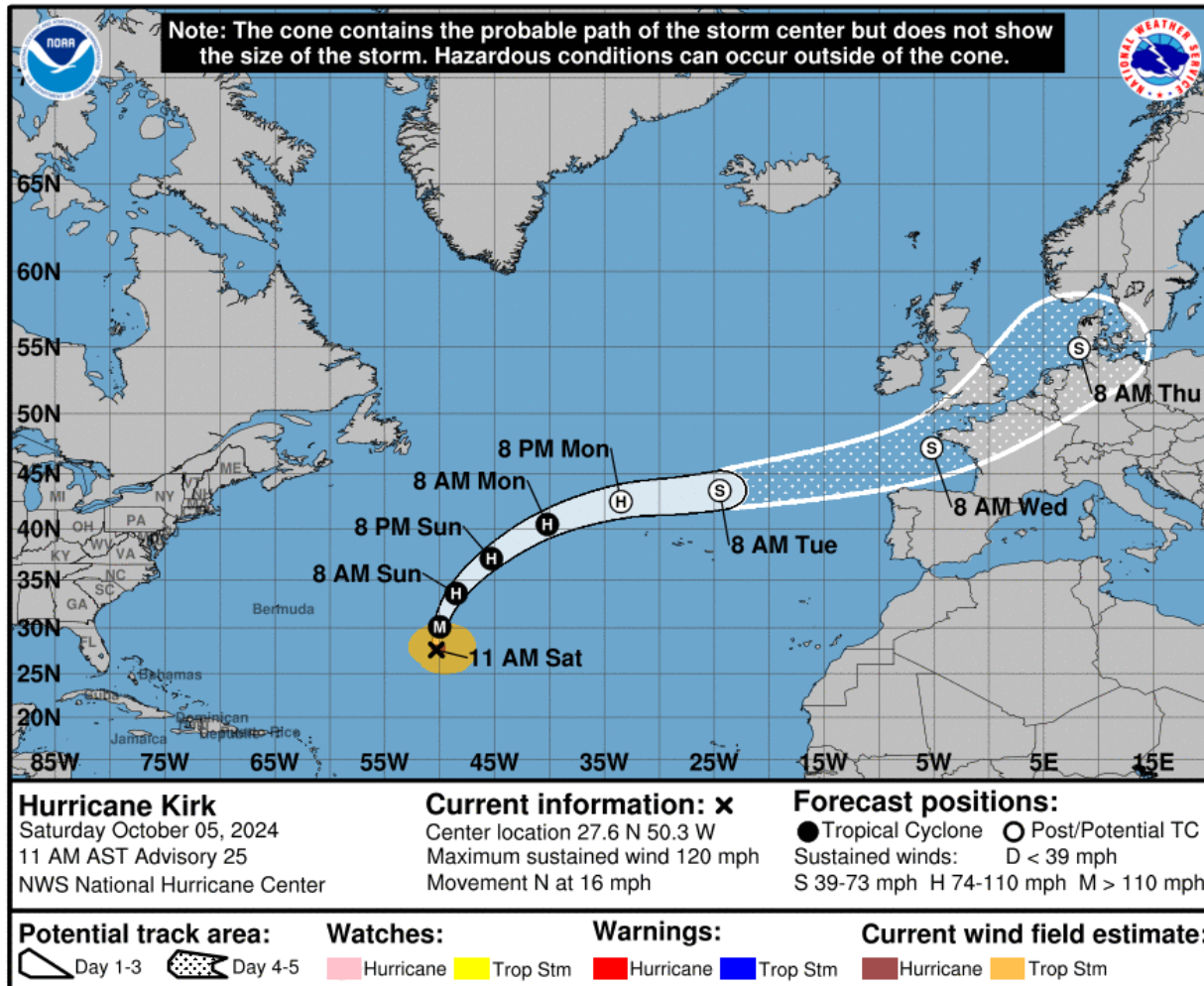
An expansion or upgraded of the Severe Weather Outlook may be possible as details become clearer.

Additional watches and warnings will be issued as necessary.



# Hurricane Kirk

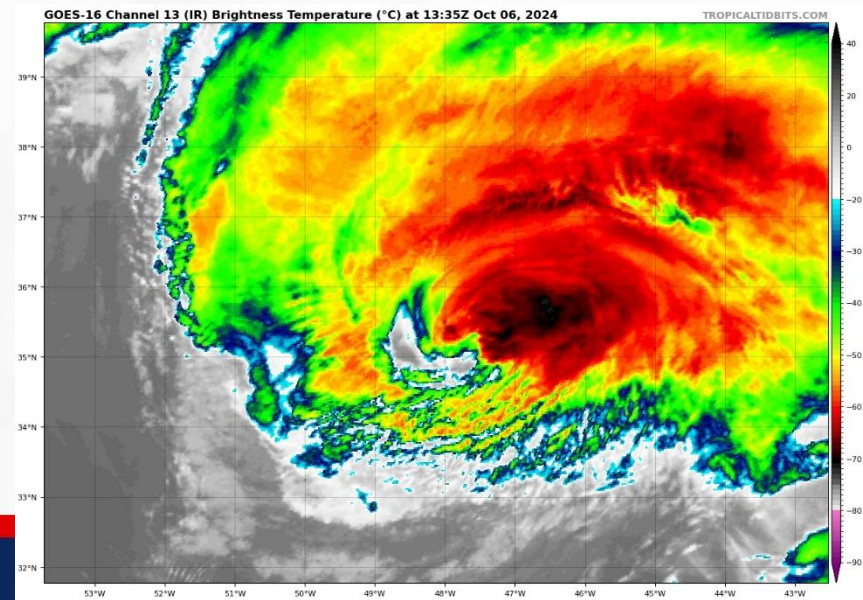
## From the National Hurricane Center (NHC)



- **Location:** 1155 miles W of the Azores
- **Maximum Sustained Winds:** 100 mph; Category 2
- **Current Movement:** NE at 25 mph

An acceleration toward the northeast and east-northeast is expected over the next few days while Kirk moves across the northeastern Atlantic. Although weakening is expected through midweek, Kirk will remain a large hurricane for the next day or so before transitioning to an extratropical cyclone by Monday night.

*Kirk poses no direct threat to Florida.*

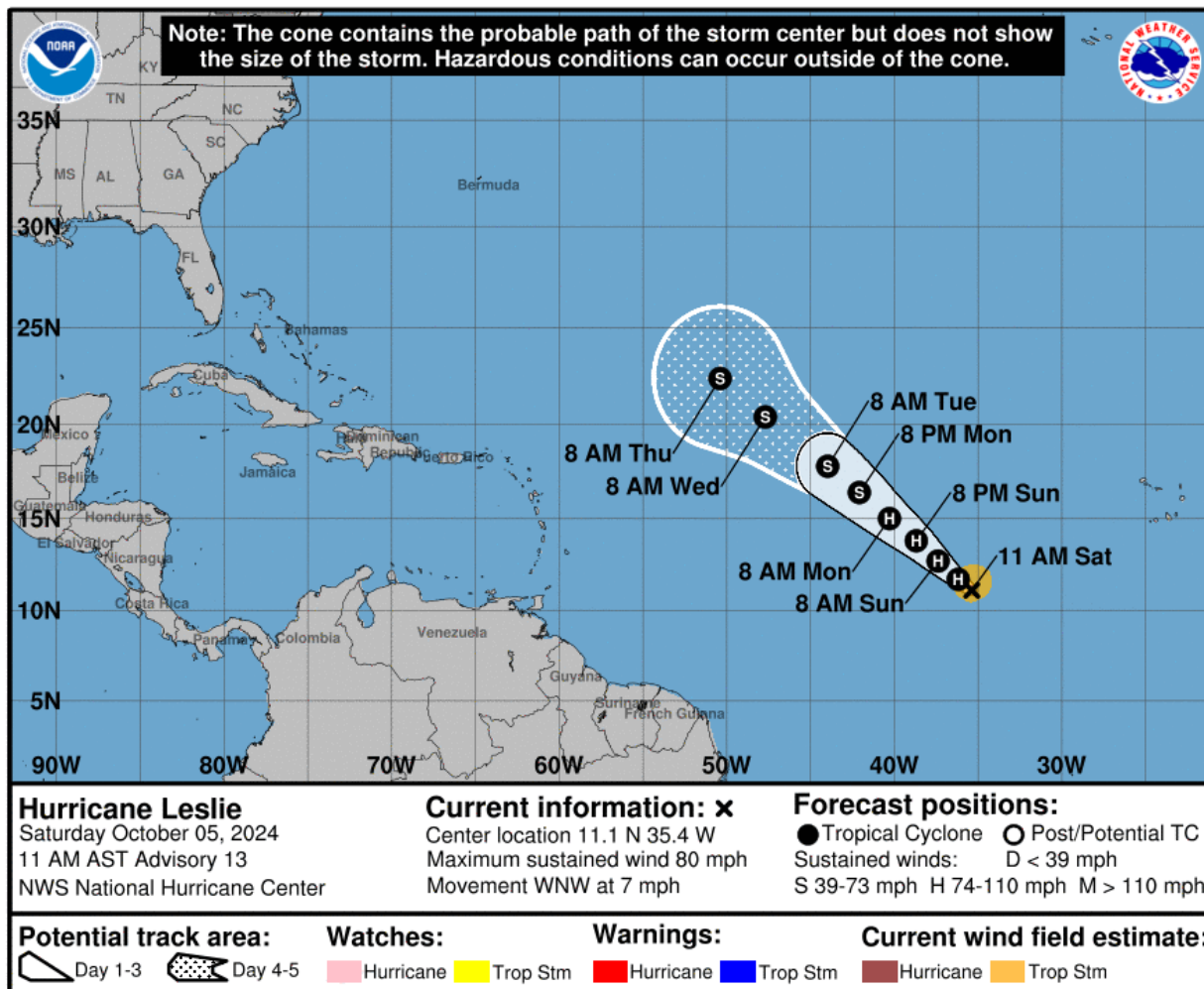






# Hurricane Leslie

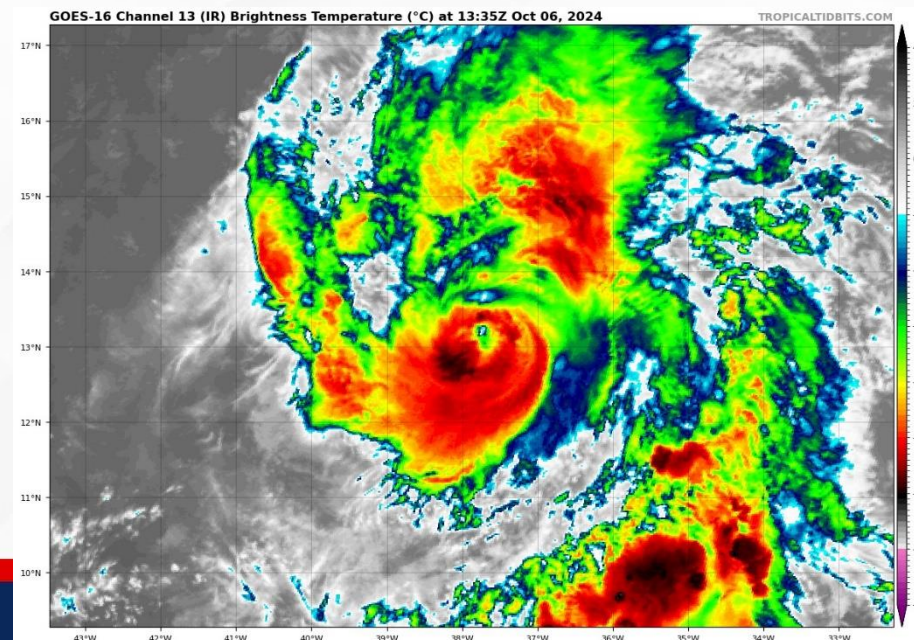
## From the National Hurricane Center (NHC)



- **Location:** 910 miles W of the Southernmost Cabo Verde Islands
- **Maximum Sustained Winds:** 90 mph
- **Current Movement:** NW at 9 mph

This general northwestward motion at 9 mph will continue over the next few days. Some intensity fluctuations are possible today, but weakening is forecast to begin on Monday and continue through midweek.

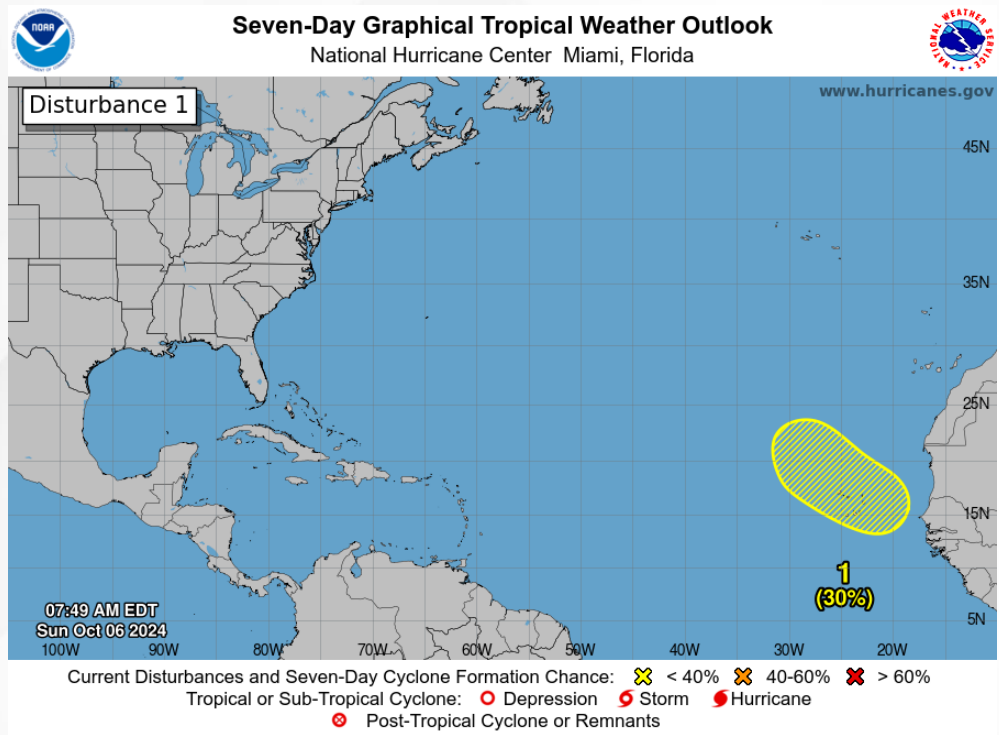
*Leslie poses no direct threat to Florida over the next 10 days, at least.*





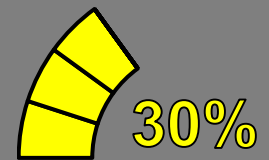
# Tropical Weather Outlook

## Disturbance 1 – Far Eastern Tropical Atlantic



**Near 0%**

48 Hour Formation



**30%**

7 Day Formation

A tropical wave is expected to move off the west coast of Africa in a few days. Some development of this system is possible thereafter while it moves westward or west-northwestward across the eastern tropical Atlantic. The system is expected to move near or over the Cabo Verde Islands on Wednesday and Thursday, and interests there should monitor its progress.

*This system poses no direct threat to Florida over the next 10 days, at least.*

Chance of development through 48 hours... **low...near 0%**

Chance of development through 7 days... **low...30%**





# Summary

**FOUO – For Government Official Use Only**

## Tropical Storm Milton:

- As of 11:00 AM EDT, Tropical Storm Milton is located about 310 miles west-northwest of Progreso, Mexico and about 835 miles west-southwest of Tampa, Florida and moving east-southeast at 6 mph and this general motion is expected today.
- An eastward to east-northeastward motion is forecast on Monday, followed by a faster northeastward motion on Tuesday and Wednesday.
- On the forecast track, Milton is forecast to move north of the Yucatan Peninsula and to move across the Gulf of Mexico and approach the west coast of the Florida Peninsula by midweek.
- Maximum sustained winds have increased to near 65 mph with higher gusts.
- Milton is forecast to rapidly intensify during the next couple of days and become a hurricane later today and a major hurricane late Monday.
- *Milton is forecast to quickly intensify while it moves eastward to northeastward across the Gulf of Mexico and be at or near major hurricane strength when it reaches West Florida midweek. There is an increasing risk of life-threatening storm surge and wind impacts for the Florida West Coast beginning late Tuesday or Wednesday.*

## Hurricane Kirk:

- As of 11:00 AM EDT, Kirk is located about 1155 miles west of the Azores and moving northeastward at 25 mph.
- An accelerations toward the northeast and east-northeast is expected over the next few days while Kirk moves across the northeastern Atlantic.
- Maximum sustained winds are near 100 mph with higher gusts making Kirk a Category 1 hurricane.
- Although weakening is expected through midweek, Kirk will remain a large hurricane for the next day or so before transitions to an extratropical cyclone by Monday night.
- *Kirk poses no threat to Florida.*

## Hurricane Leslie:

- As of 11:00 AM EDT, Leslie is located about 910 miles west of the southernmost Cabo Verde Islands and moving northwestward at 9 mph and this general motion is expected to continue over the next few days.
- Maximum sustained winds have increased to near 90 mph with higher gusts making Leslie a Category 1 hurricane.
- Some intensity fluctuations are possible today, but weakening is forecast to begin on Monday and continue through midweek.
- *Leslie poses no direct threat to Florida through the next 10 days at least.*

## Far Eastern Tropical Atlantic:

- A tropical wave is expected to move off the west coast of Africa in a few days.
- Some development of this system is possible thereafter as it moves westward or west-northwestward across the eastern tropical Atlantic.
- The system is expected to move near or over the Cabo Verde Islands on Wednesday and Thursday, and interests there should monitor its progress.
- The National Hurricane Center (NHC) is outlooking a **low (near 0%) chance** for development through 48 hours and a **low (30%) chance** through the next 7 days.
- *This system poses no direct threat to Florida over the next 7-10 days at least.*

The next briefing packet will be issued on Sunday evening. For the latest information, please visit the National Hurricane Center website.



# Summary

FOUO – For Government Official Use Only

## Florida Outlook:

- Regardless of intensity of Tropical Storm Milton, multiple rounds of heavy rainfall are expected across portions of the Peninsula and Keys today into next week.
  - Widespread rainfall totals near 5-8" with **locally higher totals in excess of 8-12"** are possible across portions of the Peninsula.
  - *Rainfall totals heavily tied to the eventual track and forward speed of the system. With computer model guidance uncertainty regarding the exact track, there remains uncertainty as to where the heaviest rainfall can be expected.*
  - The Weather Prediction Center (WPC) is outlooking a **Moderate Risk (level 3 of 4) for Flash Flooding** across the Southeast Florida Metro and I-95 corridor on Sunday with a **Slight Risk (level 2 of 4)** extending along the Peninsula coastlines due to tropical moisture and an upper-level disturbance will bring widespread and heavy rainfall that could bring localized flash and areal flooding at times over already saturated grounds and soils.
  - The Weather Prediction Center (WPC) is outlooking a **Slight Risk (level 2 of 4) for Flash Flooding** throughout East-Central and South Florida, including Lake Okeechobee, on Monday then expanding northward across Northeast Florida and through Southwest Florida on Tuesday as additional heavy rainfall before Tropical Storm Milton is possible.
  - A **Moderate Risk (level 3 of 4) for Flash Flooding** has been introduced on Wednesday across the Nature Coast and extending toward the northern I-95 corridor including lower portions of the Suwannee Valley, the northern I-75 corridor and the I-4 corridor on Wednesday. The **Slight Risk (level 2 of 4) for Flash Flooding** extends from the Suwannee Valley and through Central Florida.
  - A **Flood Watches** will go into effect today throughout the Peninsula as **flash, urban, and areal flooding** will be possible, and additional **Flood Watches** will likely be issued as details become clearer.
- Rivers, creeks/streams, and waterways across North and West-Central Florida are already running above normal for this time of year due to widespread heavy rainfall from Hurricane Debby. **River Flood Warnings** remain in effect along portions of the Withlacoochee, St. Johns, and several West-Central Florida rivers, creeks, and waterways for ongoing **minor flooding**.
  - Water will continue to filter through the river basins and further downstream from heavy rainfall across the Southeast U.S. from Hurricane Helene over the next few weeks, likely leading to **minor to moderate flooding** along portions of the Suwannee, Alapaha, and Santa Fe Rivers.
  - Heavy rainfall is anticipated Sunday and next week due frontal boundary and an upper-level disturbance not associated with Tropical Storm Milton, likely leading to water level rises in the Peninsula. Computer models are currently suggesting there is potential for locally **moderate flooding** along a few rivers, creeks, and waterways in West-Central Florida with more widespread **minor flooding** along the Peninsula.
- There is an increasing risk of life-threatening impacts for portions of the west coast of Florida Peninsula beginning late Tuesday or Wednesday; *however, the extent and locations of these impacts remain uncertain as it will be heavily tied to the eventual track and forward speed of the system.*
- Outer bands moving onshore along the Florida West Coast on Tuesday may bring **isolated tropical tornadoes** throughout the day, and the Storm Prediction Center (SPC) is outlooking a **Marginal Risk (level 1 of 5) for Severe Weather**.
  - Additional expansions or upgrades to the Severe Weather Outlook can be anticipated as details become clearer. Additional watches and warnings can be expected closer to the outer bands moving onshore.
- The next name on the list is Nadine (nay-DEEN).

The next briefing packet will be issued on Sunday evening. For the latest information, please visit the National Hurricane Center website.





# Tropical Update

FOUO – For Government Official Use Only



Created by:

**Kennedy Tartt, Assistant State Meteorologist**

**[Kennedy.Tartt@em.myflorida.com](mailto:Kennedy.Tartt@em.myflorida.com)**

**State Meteorological Support Unit**

**Florida Division of Emergency Management**

Users wishing to subscribe (approval pending) to this distribution list, register at:

[https://public.govdelivery.com/accounts/FLDEM/subscriber/new?topic\\_id=SERT\\_Met\\_Tropics](https://public.govdelivery.com/accounts/FLDEM/subscriber/new?topic_id=SERT_Met_Tropics).

Other reports available for subscription are available at:

<https://public.govdelivery.com/accounts/FLDEM/subscriber/new?preferences=true>