



Tropical Update



11:30 AM EDT

Friday, October 4, 2024

Helene Recovery Weather

Major Hurricane Kirk & Tropical Storm Leslie

Gulf of Mexico Disturbance (40%); Locally Heavy Rainfall Possible Across Portions Of The Florida Peninsula Late This Weekend Into Next Week

This update is intended for government and emergency response officials, and is provided for informational and situational awareness purposes only. Forecast conditions are subject to change based on a variety of environmental factors. For additional information, or for any life safety concerns with an active weather event please contact your County Emergency Management or Public Safety Office, local National Weather Service forecast office, or visit the National Hurricane Center website at www.hurricanes.gov.



Atlantic Basin Satellite Image

Chance of development: None Low Medium High



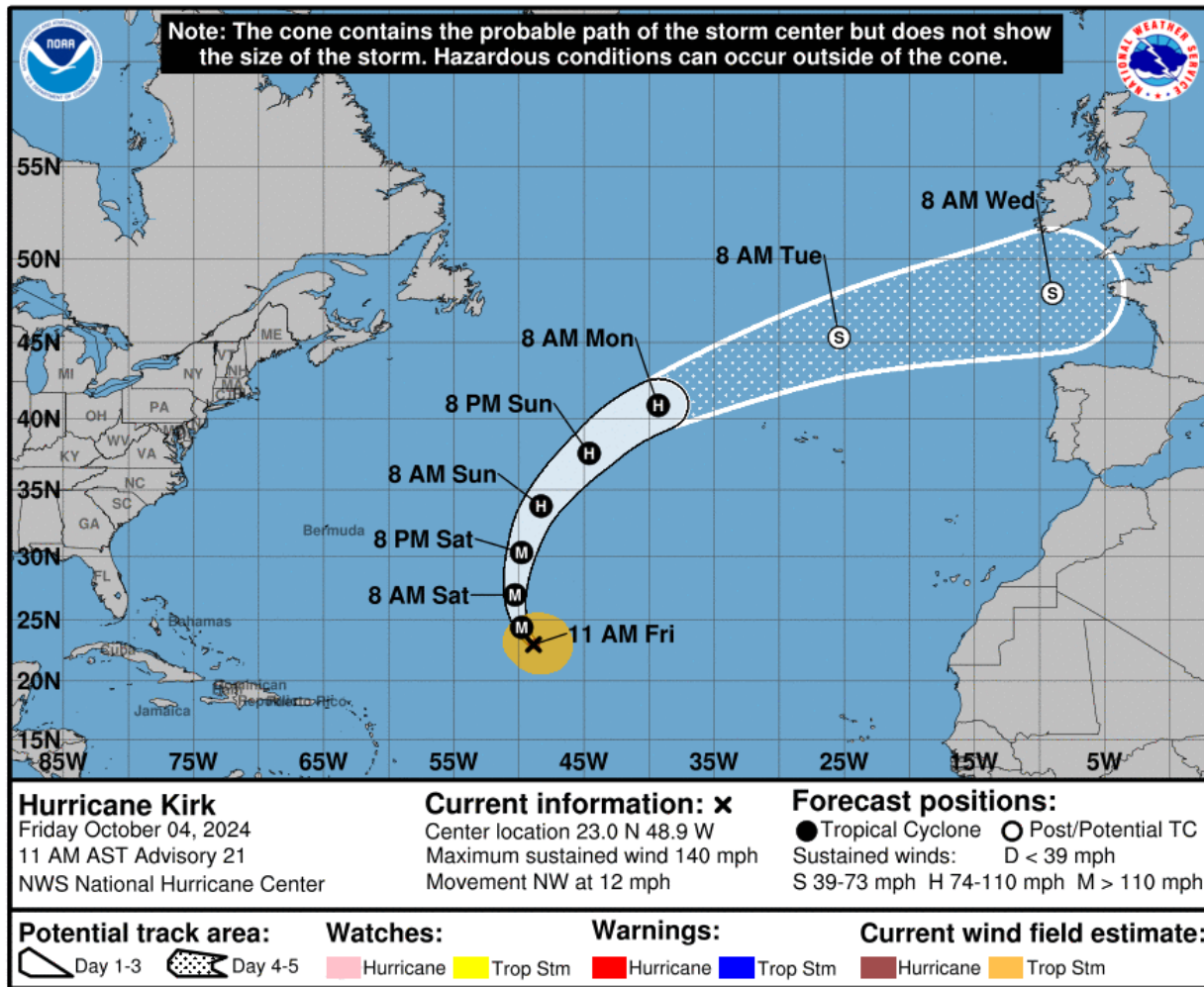
Kirk

Leslie



Major Hurricane Kirk

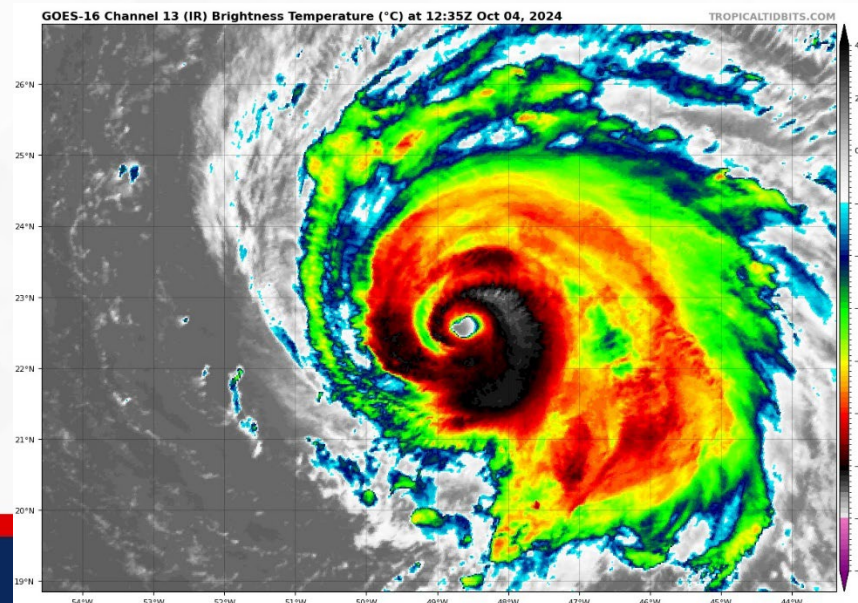
From the National Hurricane Center (NHC)



- **Location:** 975 miles ENE of the Northern Leeward Islands
- **Maximum Sustained Winds:** 140 mph; Category 4
- **Current Movement:** NW at 12 mph

This general motion is expected to continue today, followed by a turn toward the north and north-northeast at a faster forward speed is expected over the weekend. Kirk remains a Category 4 hurricane, and small intensity fluctuations are possible today and tonight. Weakening is forecast to begin on Saturday and continue through early next week.

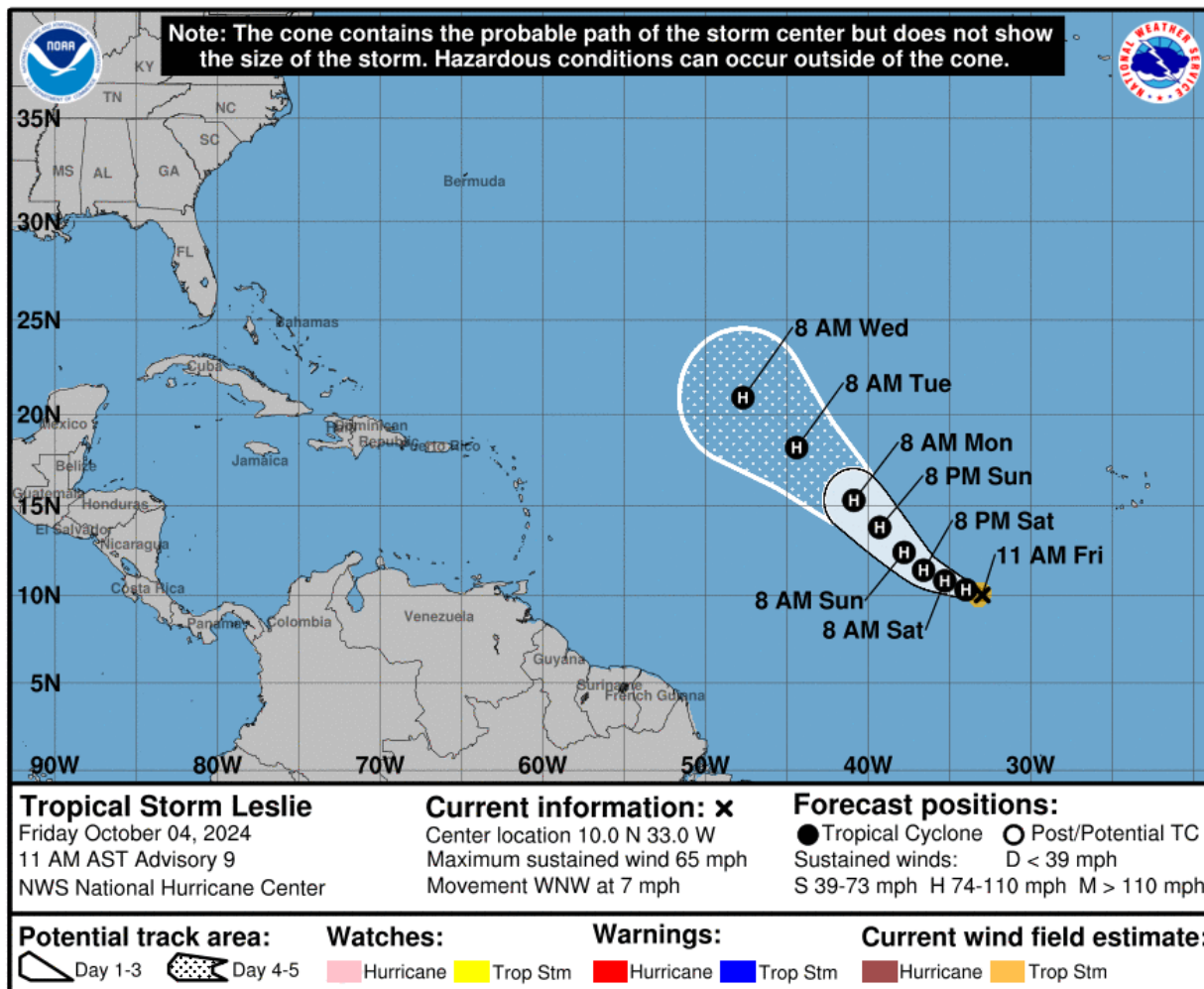
Kirk poses no direct threat to Florida.





Tropical Storm Leslie

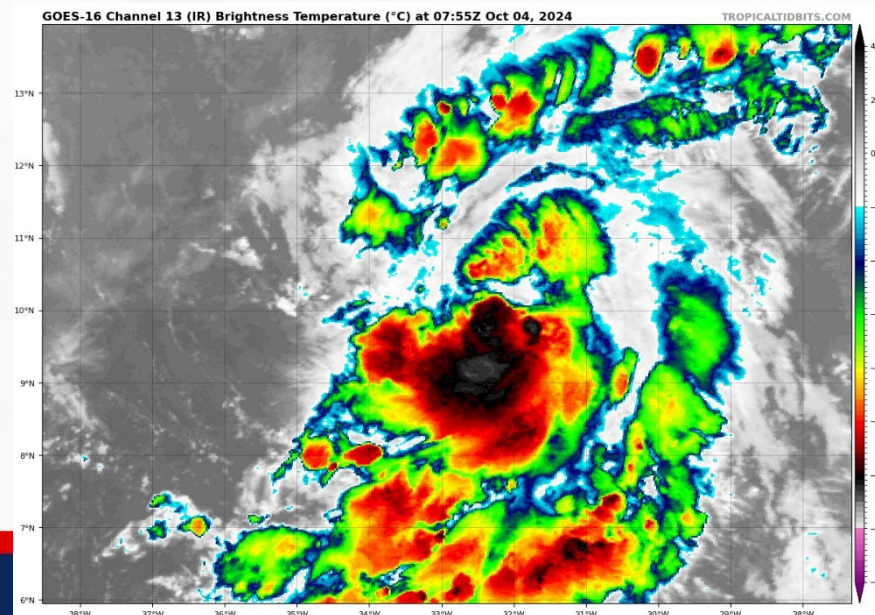
From the National Hurricane Center (NHC)



- **Location:** 670 miles WSW of the Southernmost Cabo Verde Islands
- **Maximum Sustained Winds:** 65 mph
- **Current Movement:** WNW at 7 mph

A turn toward the west-northwest is expected to continue through the day, followed by a turn toward the northwest and an increase in forward speed by early Sunday into Monday. Maximum sustained winds have increased to near 65 mph, and additional strengthening is forecast. Leslie is expected to become a hurricane tonight or Saturday.

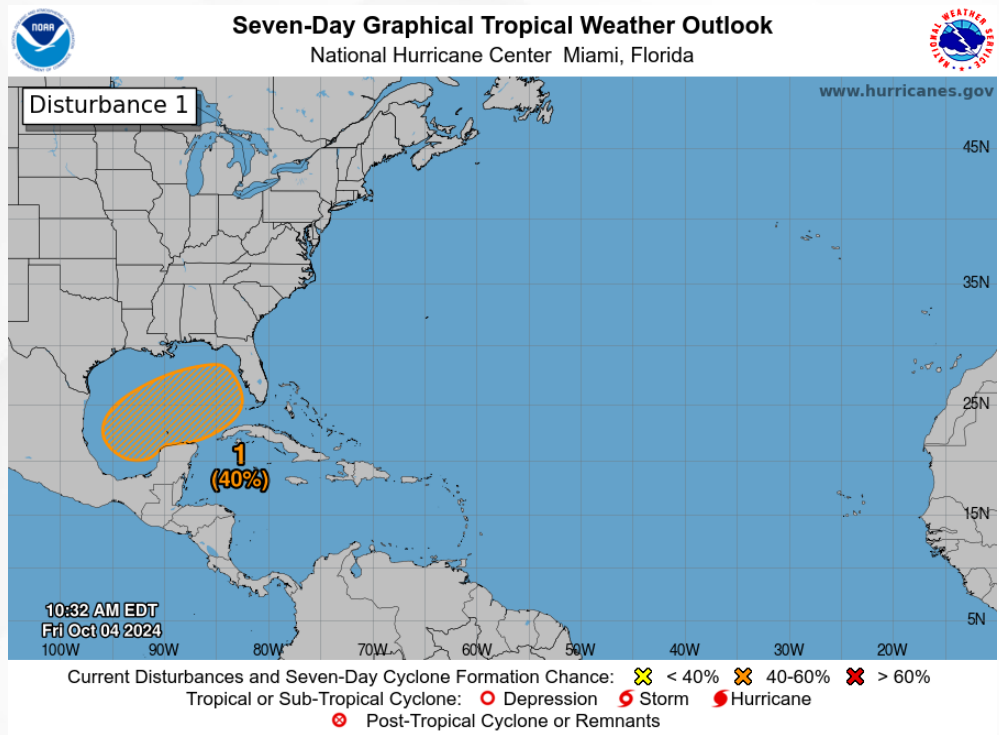
Leslie poses no direct threat to Florida over the next 10 days, at least.





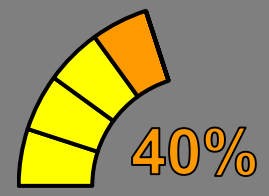
Tropical Weather Outlook

Disturbance 1 – Gulf of Mexico



Near 0%

48 Hour Formation



7 Day Formation

Disorganized showers and thunderstorms located over the western Gulf of Mexico are associated with a trough of low pressure. A broad area of low pressure is expected to form over the southwestern or south-central Gulf of Mexico this weekend, and thereafter some gradual development is possible while the low moves slowly eastward or northeastward. A tropical or subtropical depression or storm could form during the early to middle part of next week if the low remains separate from a frontal boundary that is forecast to extend across the Gulf of Mexico next week.

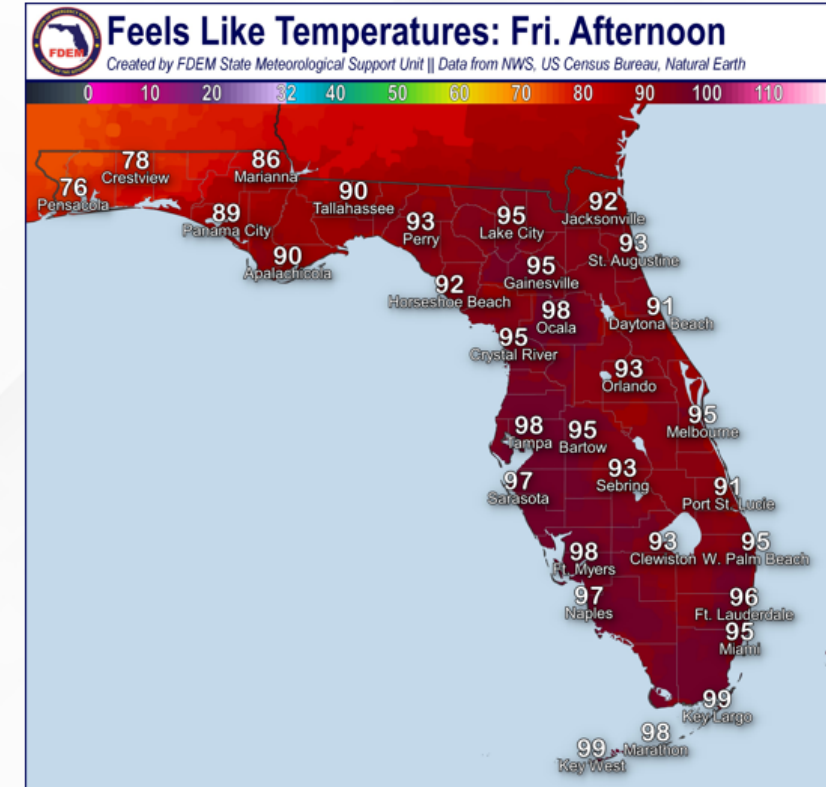
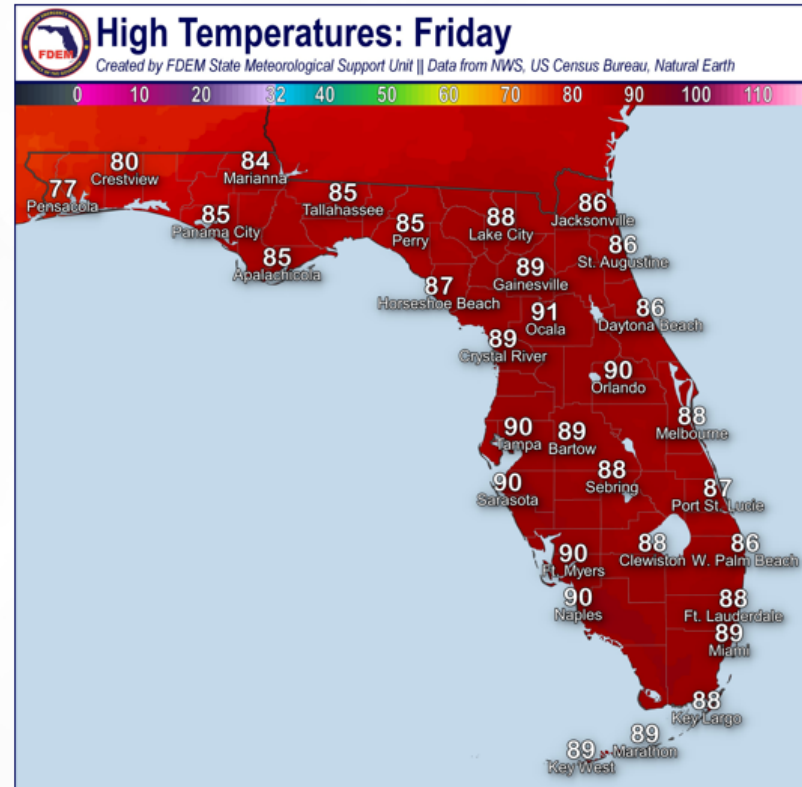
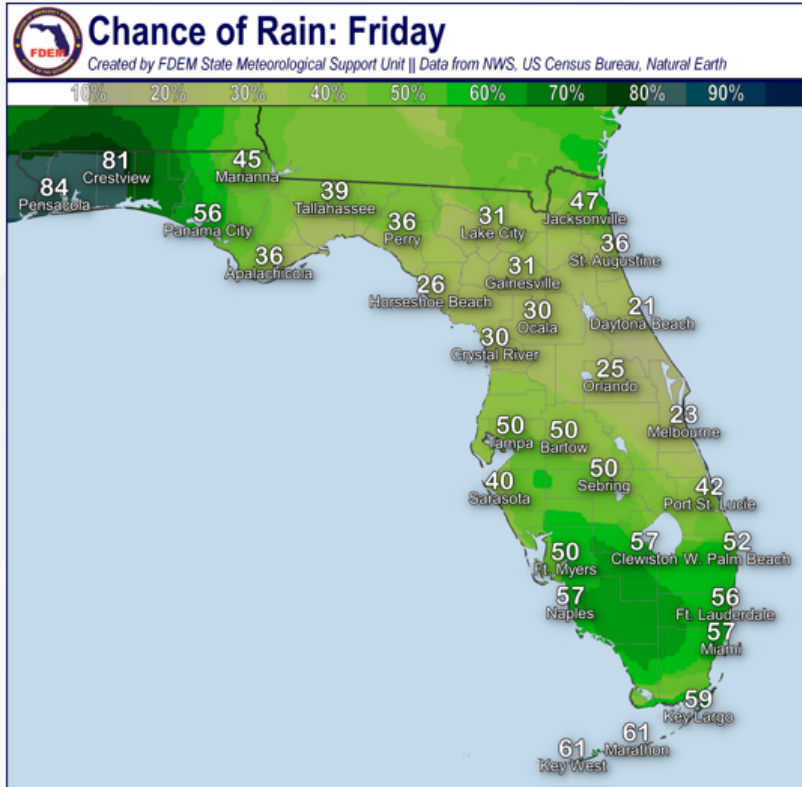
Regardless of tropical or subtropical development, locally heavy rains could occur over portions of Mexico during the next few days and over portions of the Florida Peninsula late this weekend into next week.

Chance of development through 48 hours... **low...near 0%**
Chance of development through 7 days...**medium...40%**



Recovery Weather - Friday

Rain Chances, High Temperature & Feels-Like Temperature



FOUO – For Government Official Use Only



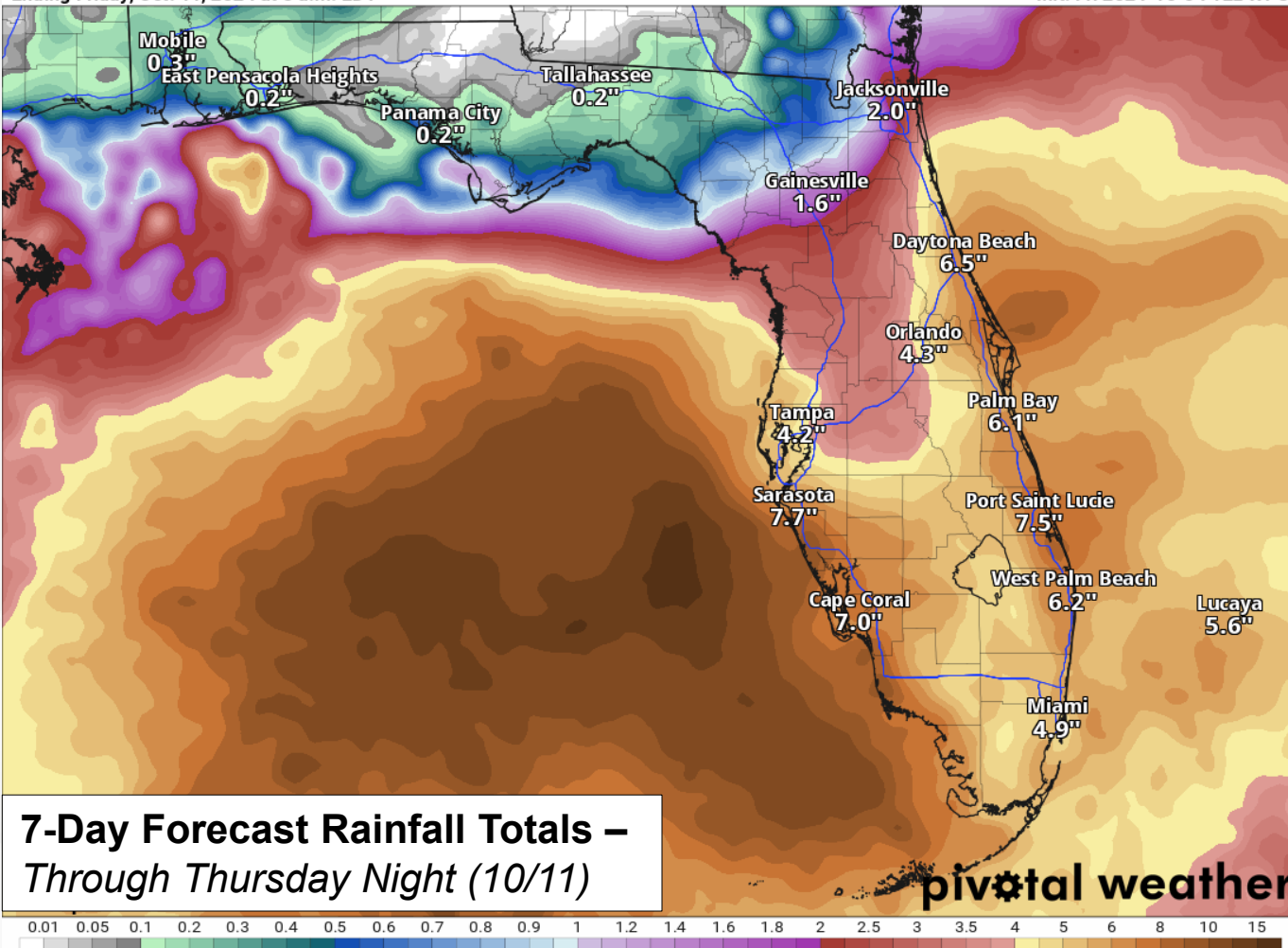
Rainfall Totals – Next 7 Days

From the Weather Prediction Center (WPC)

7-Day Precipitation (in)

Ending Friday, Oct. 11, 2024 at 8 a.m. EDT

Init: Fri 2024-10-04 12z WPC

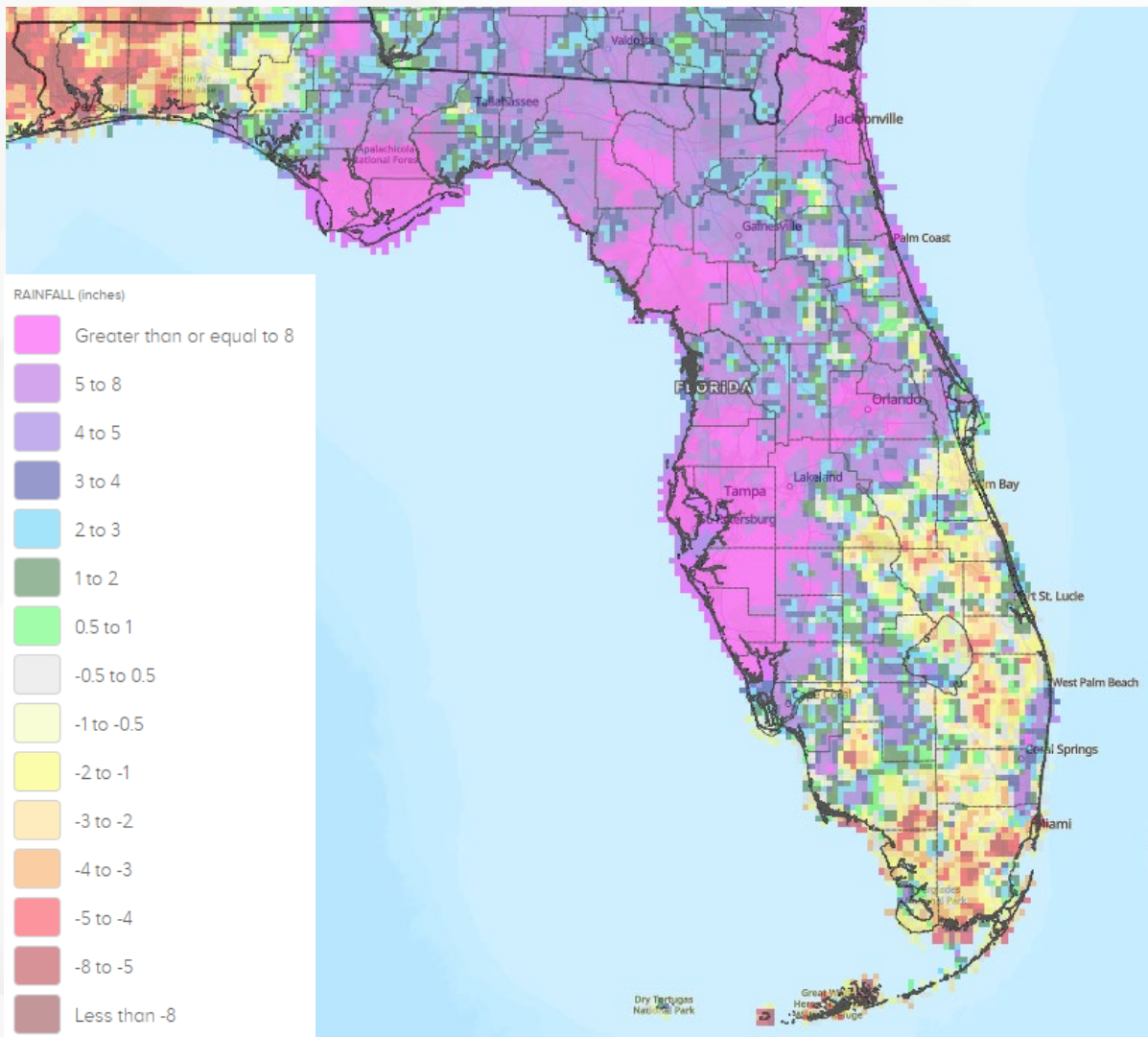


- Scattered showers and thunderstorms are forecast to continue across the state through the rest of the week and into the weekend, with more concentrated rainfall totals arriving later this weekend and next week as we monitor potential development in the Gulf of Mexico.
- Rainfall totals will be highly dependent upon the evolution of the tropical disturbance over the Gulf of Mexico, with most of this activity not beginning until later this weekend or next week.
- A frontal boundary is expected to push through the southeast U.S. late this weekend into early next week, likely interact with the disturbance and supporting a wet and active weather pattern. The timing and placement of these systems and their possible interactions will continue to be monitored.
- There is potential for widespread rainfall totals near 5-8" with **locally higher totals in excess of 12"** across portions of the Peninsula over the next 7 days.
 - Computer models are indicating the heaviest rainfall totals may occur along and near the I-4 corridor through Central and South Florida; however, the exact placement of these more significant totals will continue to be modified depending on the tropical disturbance's organization and track.
 - **Please continue to stay tuned for the latest computer forecast model guidance and trends in the subsequent days.**



60-Day Rainfall Departure From Normal

From the National Weather Service



Much of the Big Bend and Northern Peninsula southward through the I-4 corridor and into West-Central and Southwest Florida have experienced rainfall totals greater than 5-10" above normal over the past 60-days. More localized areas have seen rainfall totals near 10-15" above normal over the past 60-days across with isolated higher totals near 15-20" over the past 60 days across portions of Apalachicola, the Suwannee Valley, Northeast Florida, and West-Central Florida.

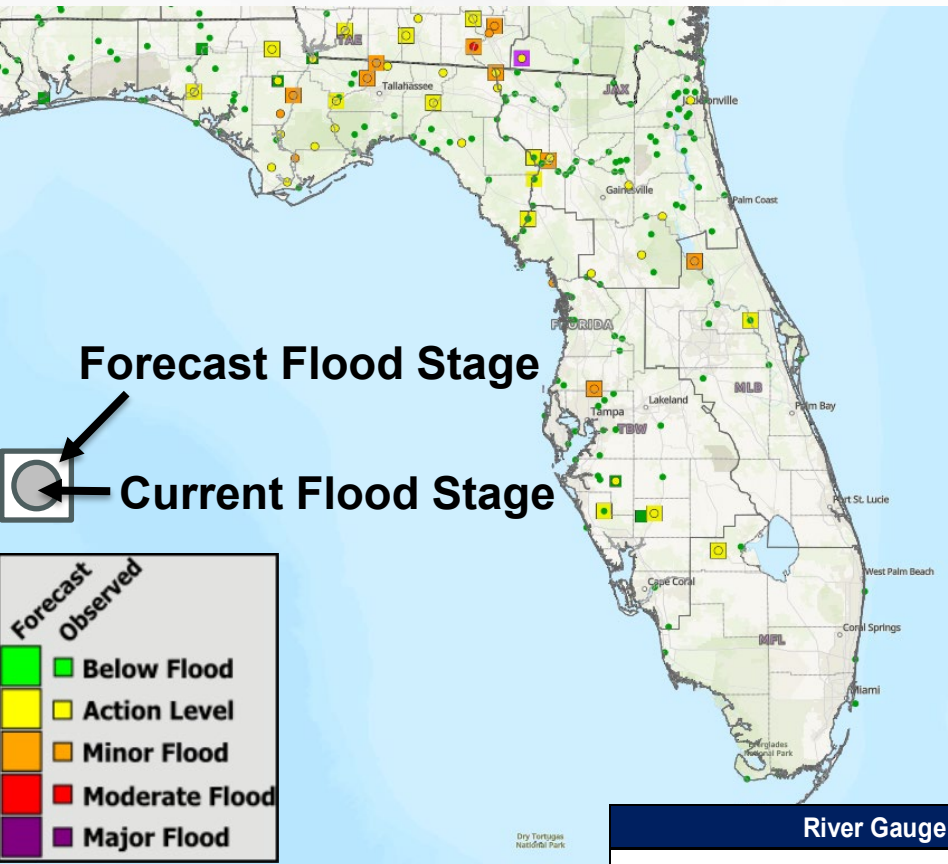
Numerous North, West-Central, and Southwest Florida rivers are already running high and/or within flood stage at this time.

Saturated areas will be more vulnerable to heavy rainfall and a faster onset of flooding.



Current & Forecast River Conditions

From the National Weather Service



A **River Flood Warning** remains in effect along the [St. Johns River at Astor](#) as water levels hold relatively steady within **Minor Flood Stage**.

A **River Flood Warning** has been issued for [Cypress Creek at SR-54](#), [Manatee River near Myakka Head at SR-64](#), [Little Manatee River near Wimauma at US-301](#) as water levels have risen into or are forecast to reach **Minor Flood Stage** in response to locally heavy rainfall over the past few days.

Several **River Flood Warnings** remain in effect across the eastern Florida Panhandle and Big Bend as elevated water levels continue in the wake of Helene. The [Apalachicola River near Blountstown](#) and [Withlacoochee River near Pinetta \(CR-150\)](#) continue to run in **Minor Flood Stage**.

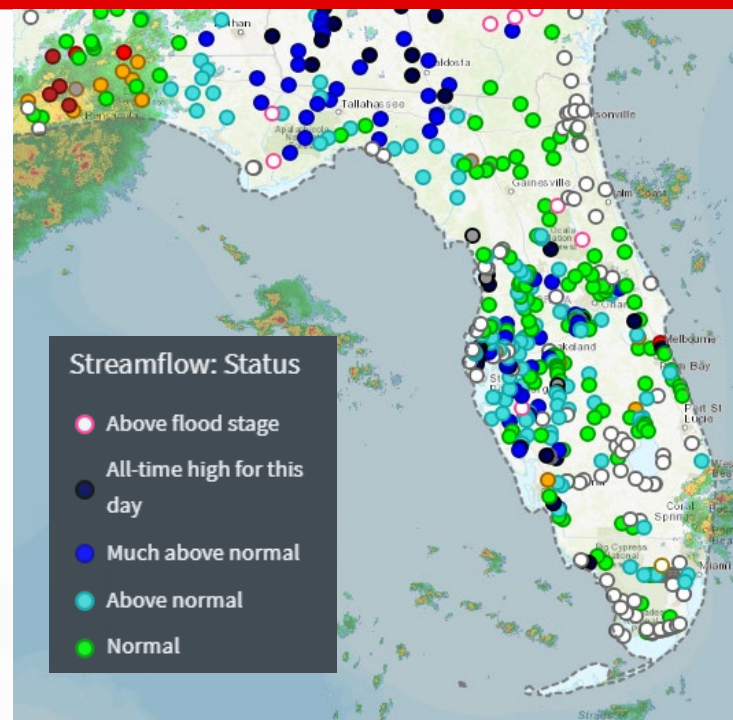
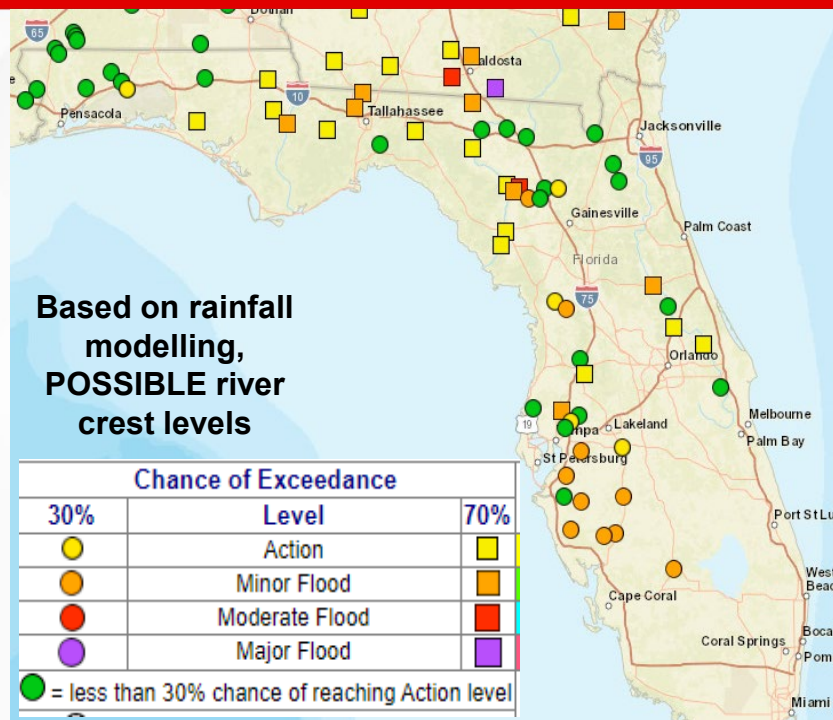
Additional rises in water level will be possible along the Withlacoochee River and along Suwannee Valley mainstem rivers (including the Suwannee, Alapaha, and Santa Fe) as excess heavy rainfall discharge through the basin from the Georgia headwaters. With the return of a wet and active weather pattern next week, additional water level rises will be possible along rivers, creeks, and waterways in the Peninsula. For more details, please visit the [River Forecast Center](#).

River Gauge	County(ies) Affected	Current Level	Crest Level	Record Level	Status	Crest Date	Warning Expires
Apalachicola River near Blountstown	Calhoun, Franklin, Gulf, Liberty	Minor: 17.69 ft	Minor: 21.00 ft	28.60 ft	Falling	Crested	0500 CDT 5-Oct
Cypress Creek at SR-54	Pasco	Minor: 8.07 ft	Minor: 8.10 ft	13.80 ft	Cresting	3-Oct	1400 EDT 4-Oct
Little Manatee River near Wimauma at US-301	Hillsborough	Action: 10.00 ft	Minor: 11.60 ft	20.10 ft	Falling	5-Oct	0342 EDT 5-Oct
Manatee River near Myakka Head at SR-64	Manatee	Minor: 13.65 ft	Minor: 13.80 ft	20.90 ft	Rising	4-Oct	0800 EDT 5-Oct
Ochlockonee River near Concord (CR-12)	Gadsden, Leon	Minor: 36.65 ft	Moderate: 39.80 ft	45.70 ft	Falling	Crested	2000 EDT 4-Oct
Ochlockonee River near Havana (US-27)	Gadsden, Leon	Minor: 26.59 ft	Minor: 28.38 ft	35.10 ft	Falling	Crested	2000 EDT 4-Oct
Withlacoochee River near Pinetta	Hamilton, Madison	Minor: 75.33 ft	Minor: 78.40 ft	87.80 ft	Rising	5-Oct	1600 EDT 8-Oct
St. Johns River at Astor	Volusia, Lake	Minor: 2.52 ft	Minor: 2.50 ft	4.70 ft	Rising	Crested	Until Further Notice



Riverine Flooding

Chance of River Flooding Based on Range of Forecast Rainfall



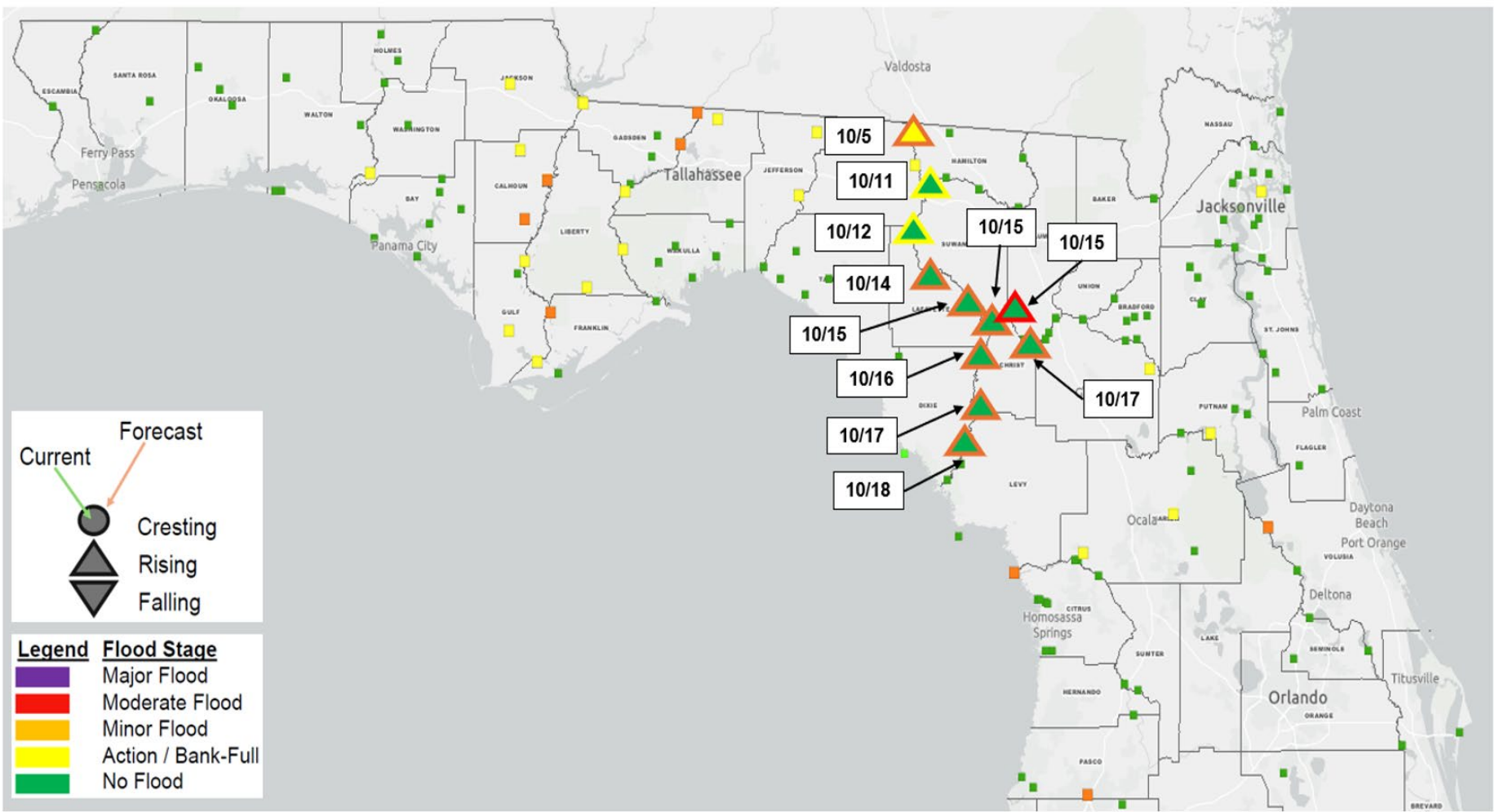
Rivers, creeks/streams, and waterways across North and West-Central Florida are already running above normal for this time of year due to widespread heavy rainfall from Hurricane Debby. Several **River Flood Warnings** remain in effect along portions of the Apalachicola and Withlacoochee Rivers as **minor flooding** persists from heavy rainfall from Hurricane Helene. Additional **River Flood Warnings** remain in effect for the St. Johns River as minor flooding continues due to trapped tides and is occurring or forecast along the Cypress Creek at SR-54, Little Manatee River near Wimauma at US-301, and Manatee River near Myakka Head at SR-64 response to locally heavy rainfall.

Water will continue to filter through the river basins and further downstream from heavy rainfall across the Southeast U.S. from Hurricane Helene over the next few weeks. Computer models are suggesting the potential for **minor flooding** along portions of the Suwannee River as excess heavy rainfall discharge through the basin from the Georgia headwaters with **minor to moderate backwater flooding** possible along the Santa Fe River. The Alapaha River near Jennings may also see water levels rise above flood stage in the next week or so as the Alapaha River at Statenville, Georgia is forecast to crest in major flood stage early next week before the crest wave moves further downstream into Florida. Additional heavy rainfall is anticipated this weekend as a frontal boundary likely interacts with the tropical disturbance in the Gulf of Mexico and supports a wet and active weather pattern, likely leading to water level rises in the Peninsula.



Forecast River Crest Timing

Chance of River Flooding Based on Range of Forecast Rainfall



Santa Fe & Suwannee River Forecast Timing
Valid: 10/3/2024



Summary

FOUO – For Government Official Use Only

Major Hurricane Kirk:

- As of 11:00 AM EDT, Kirk is located about 975 miles east-northeast of the Northern Leeward Islands or 1655 miles southwest of the Azores and moving northwestward at 12 mph.
- This general motion is expected to continue today. A turn toward the north and north-northeast at a faster forward speed is anticipated over the weekend.
- Maximum sustained winds are near 140 mph with higher gusts, making Kirk a Category 4 hurricane on the Saffir-Simpson scale.
- Small intensity fluctuations are possible today. Weakening is forecast to begin on Saturday and continue through early next week.
- *Kirk poses no direct threat to Florida at this time.*

Tropical Storm Leslie:

- As of 11:00 AM EDT, Leslie is located about 670 miles west-southwest of the southernmost Cabo Verde Islands and moving west-northwestward at 7 mph.
- A turn toward the west-northwest is expected to continue today, followed by a turn toward the northwest and an increase in forward speed early Sunday into Monday.
- Maximum sustained winds have increased to near 65 mph with higher gusts.
- Additional strengthening is forecast, and Leslie is expected to become a hurricane by tonight or Saturday.
- *This system poses no direct threat to Florida over the next 10 days, at least.*

Gulf of Mexico:

- Disorganized showers and thunderstorms located over the western Gulf of Mexico are associated with a trough of low pressure.
- A broad area of low pressure is expected to form over the southwestern or south-central Gulf of Mexico this weekend, and thereafter some gradual development is possible while the low moves slowly eastward or northeastward.
- A tropical or subtropical depression or storm could form during the early to middle part of next week if the low remains separate from a frontal boundary that is forecast to extend across the Gulf of Mexico next week.
- *Regardless of tropical or subtropical development, locally heavy rains could occur over portions of Mexico during the next few days and over portions of the Florida Peninsula late this weekend into next week.*
- The NHC is outlooking a **low (near 0%) chance of development** over the next 48 hours, and a **medium (40%) chance of development** over the next 7 days.

The next name on the list is Milton (MIL-ton).

The next briefing packet will be issued on Saturday morning. For the latest information, please visit the National Hurricane Center website.



Summary

FOUO – For Government Official Use Only

Florida Outlook:

- Rain chances will increase along the Florida Panhandle today as deep moisture returns and an upper-level disturbance to the west supports activity throughout the day; highest rain chances will reside along the Western Panhandle this afternoon, closer to the disturbance.
- Isolated showers and thunderstorms will continue to develop along the Peninsula and Keys today with the sea breezes.
- A locally strong thunderstorm or two may be possible during the peak heating hours of the day.
- Localized instances of flooding cannot be ruled out today and Saturday, especially with locally heavy rainfall along urban and low-lying/poor drainage areas, over saturated grounds, or within slow-moving or training activity.
 - Coastal and low-lying areas along Florida's Gulf Coast will remain vulnerable to additional rounds of rainfall thanks to recent and lingering flooding and saturated grounds.
- **River Flood Warnings** remain in effect across the Big Bend and Northern Peninsula as elevated water levels continue in the wake of Helene.
 - River levels along the Apalachicola River near Blountstown and Withlacoochee River near Pinetta (CR-150) continue to run in **Minor Flood Stage**.
 - **Minor flooding** is occurring or forecast along Cypress Creek at SR-54, Little Manatee River near Wimauma at US-301, and Manatee River near Myakka Head at SR-64 due to locally heavy rainfall.
 - **Minor flooding** continues along the St. Johns River at Astor due to trapped tides in the basin.
 - Additional rises in water level will be possible along the Withlacoochee River and along Suwannee Valley mainstem rivers (including the Suwannee, Alapaha, and Santa Fe) as excess heavy rainfall discharge through the basin from the Georgia headwaters. With the return of a wet and active weather pattern next week, additional water level rises will be possible along rivers, creeks, and waterways in the Peninsula.
- Rainfall totals will be highly dependent upon the evolution of the tropical disturbance over the Gulf of Mexico, with most of this activity not beginning until later this weekend or next week.
 - There is potential for widespread rainfall totals near 5-8" with **locally higher totals** across portions of the Peninsula over the next 7 days.
 - Computer models are indicating the heaviest rainfall totals may occur across South and Central Florida and north of the I-4 corridor; however, the exact placement of these more significant totals will continue to be modified depending on the tropical disturbance's organization and track.
 - A frontal boundary is expected to push through the southeast U.S. late this weekend into early next week, likely interact with the disturbance and supporting a wet and active weather pattern; The timing and placement of these systems and their possible interactions will continue to be monitored.
 - **Please continue to stay tuned for the latest computer forecast model guidance and trends in the subsequent days.**

The next briefing packet will be issued on Saturday morning. For the latest information, please visit the National Hurricane Center website.



Tropical Update

FOUO – For Government Official Use Only



Created by:

Melissa James, Assistant State Meteorologist

Melissa.James@em.myflorida.com

State Meteorological Support Unit

Florida Division of Emergency Management

Users wishing to subscribe (approval pending) to this distribution list, register at:

https://public.govdelivery.com/accounts/FLDEM/subscriber/new?topic_id=SERT_Met_Tropics.

Other reports available for subscription are available at:

<https://public.govdelivery.com/accounts/FLDEM/subscriber/new?preferences=true>