



Tropical Update



11:30 AM EDT

Thursday, October 3, 2024

Helene Recovery Weather

Major Hurricane Kirk & Tropical Storm Leslie

**Gulf of Mexico Disturbance (30%); Locally Heavy Rainfall Possible
Across Portions Of The Florida Peninsula Next Week**

This update is intended for government and emergency response officials, and is provided for informational and situational awareness purposes only. Forecast conditions are subject to change based on a variety of environmental factors. For additional information, or for any life safety concerns with an active weather event please contact your County Emergency Management or Public Safety Office, local National Weather Service forecast office, or visit the National Hurricane Center website at www.hurricanes.gov.



Atlantic Basin Satellite Image

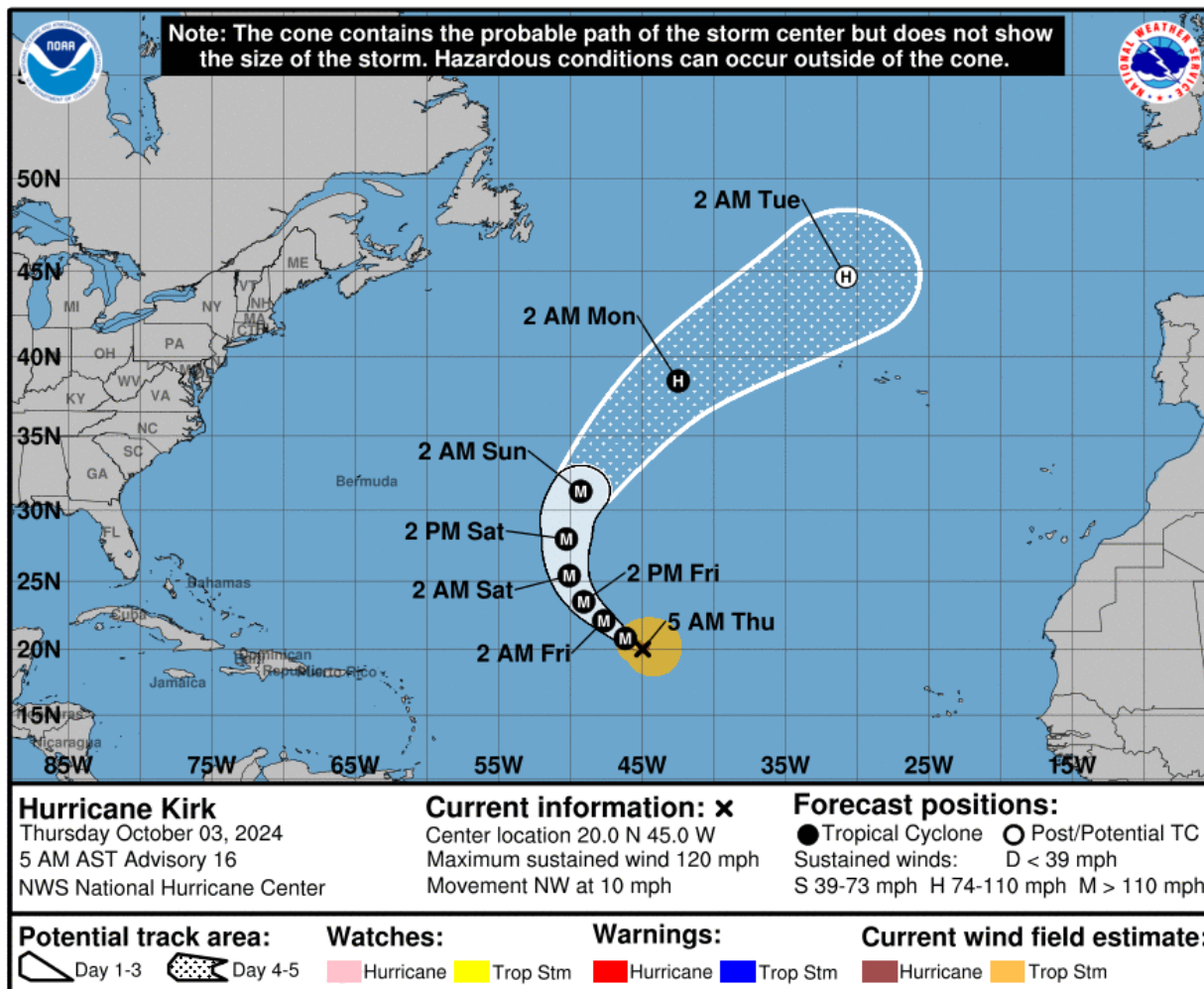
Chance of development: None Low Medium High





Major Hurricane Kirk

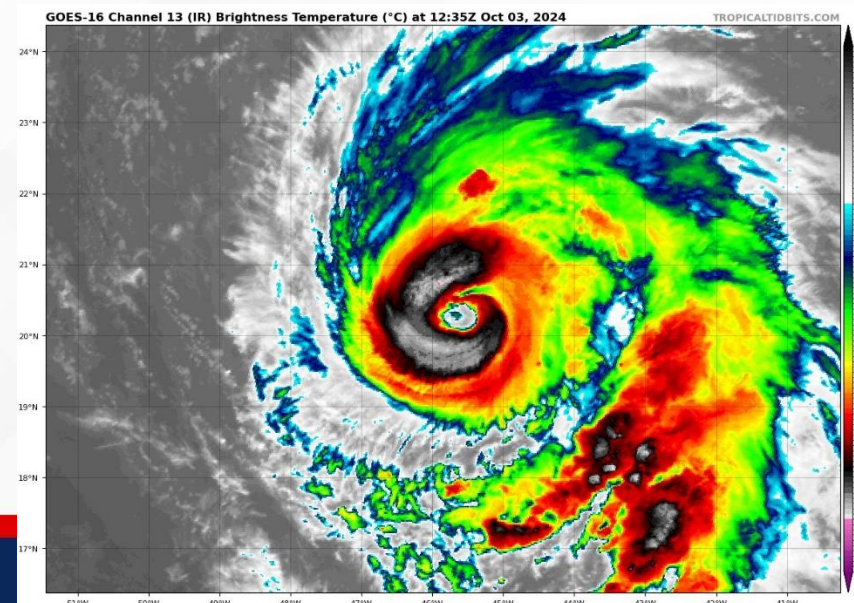
From the National Hurricane Center (NHC)



- **Location:** 1130 miles E of the Northern Leeward Islands; 1660 miles SW of the Azores
- **Maximum Sustained Winds:** 125 mph; Category 3
- **Current Movement:** NW at 10 mph

This general motion is expected to continue through early Friday. A turn toward the north and north-northeast at a faster forward speed is forecast over the weekend. Some strengthening is forecast the next day or so.

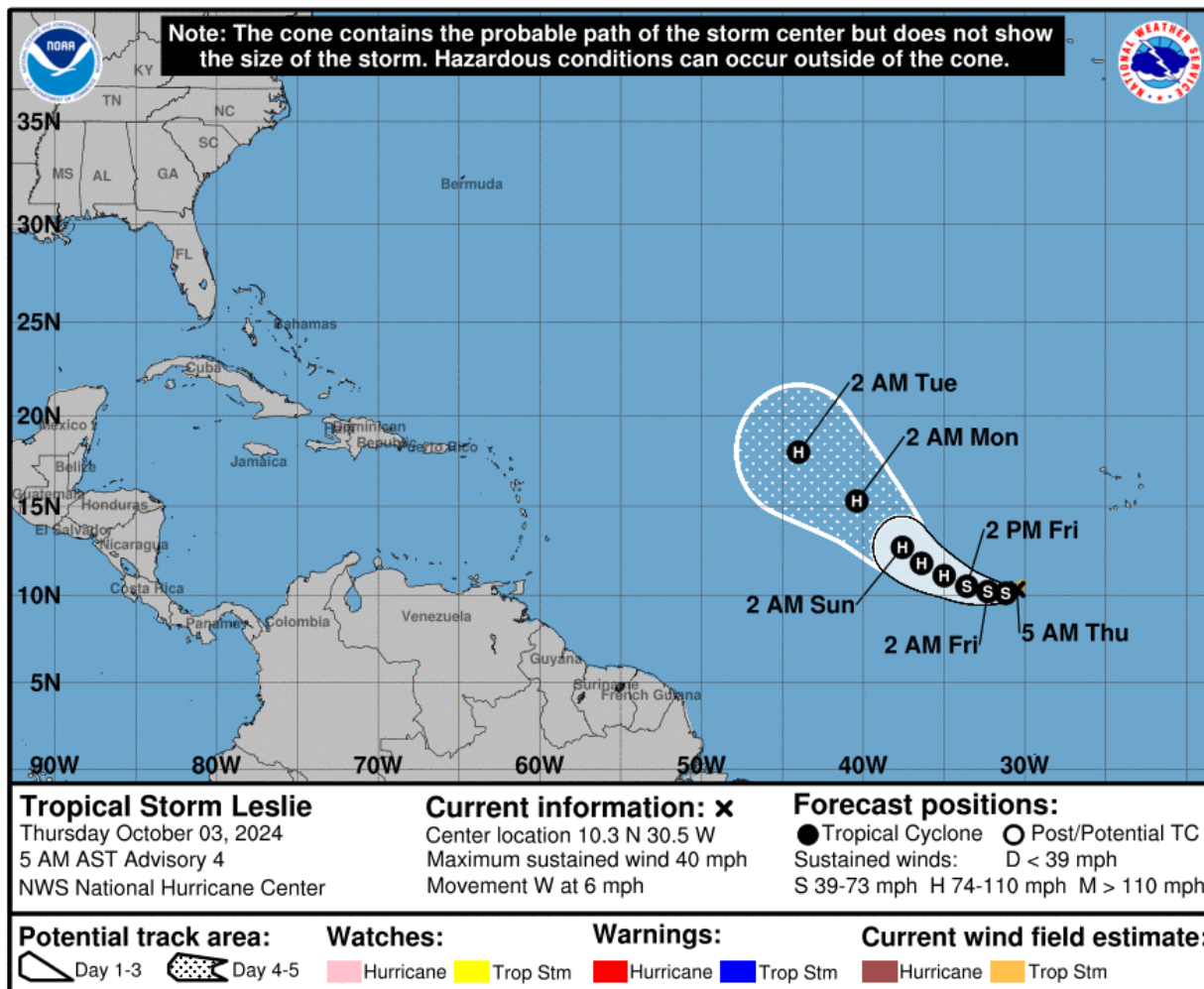
Kirk poses no direct threat to Florida.





Tropical Storm Leslie

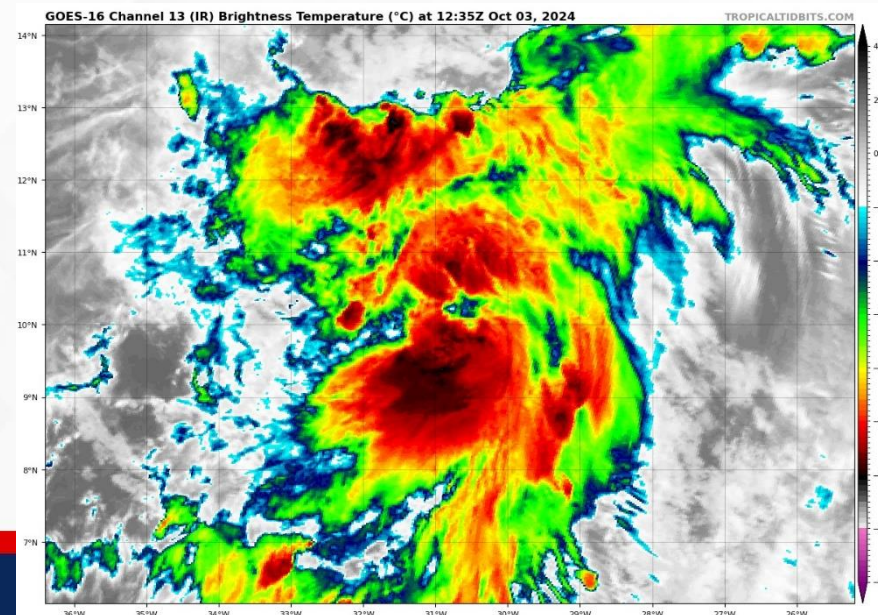
From the National Hurricane Center (NHC)



- **Location:** 540 miles SW of the Southernmost Cabo Verde Islands
- **Maximum Sustained Winds:** 45 mph
- **Current Movement:** W at 5 mph

A slow westward motion is expected through tonight, followed by a slightly faster west-northwestward motion Friday through Saturday. Steady strengthening is anticipated, and Leslie is forecast to become a hurricane in a day or so.

Leslie poses no direct threat to Florida over the next 10 days, at least.





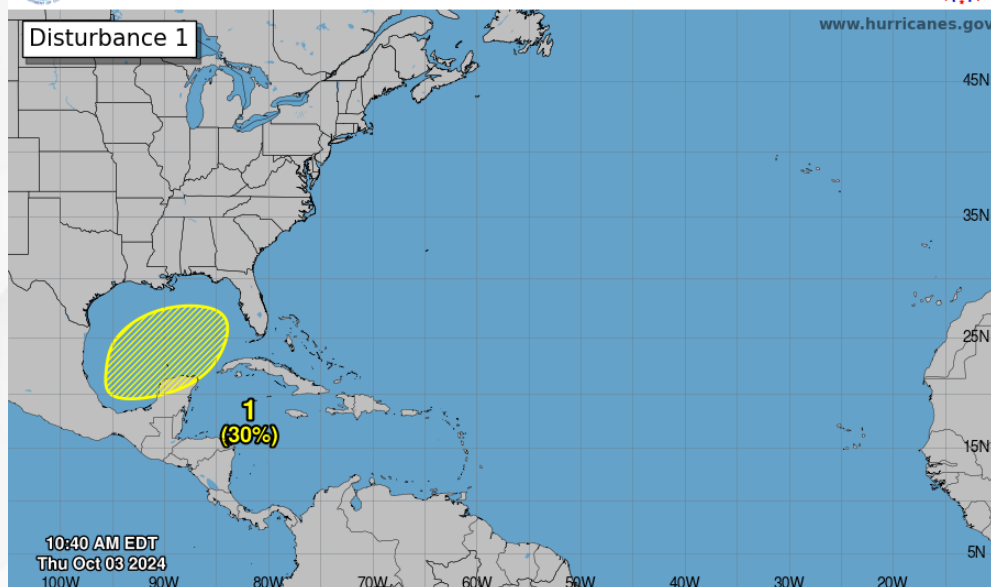
Tropical Weather Outlook

Disturbance 1 – Gulf of Mexico



Seven-Day Graphical Tropical Weather Outlook

National Hurricane Center Miami, Florida



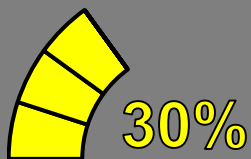
Current Disturbances and Seven-Day Cyclone Formation Chance: ✕ < 40% ✖ 40-60% ✖ > 60%

Tropical or Sub-Tropical Cyclone: ○ Depression ● Storm ● Hurricane

● Post-Tropical Cyclone or Remnants

Near 0%

48 Hour Formation



7 Day Formation

Disorganized showers and thunderstorms over portions of the Gulf of Mexico are associated with a surface trough. A broad area of low pressure is likely to develop over the Gulf of Mexico late this weekend or early next week, but subsequent tropical or subtropical development could be limited by the system's potential interaction with a frontal boundary.

Regardless of development, locally heavy rains could occur over portions of Mexico during the next few days and over portions of the Florida Peninsula next week.

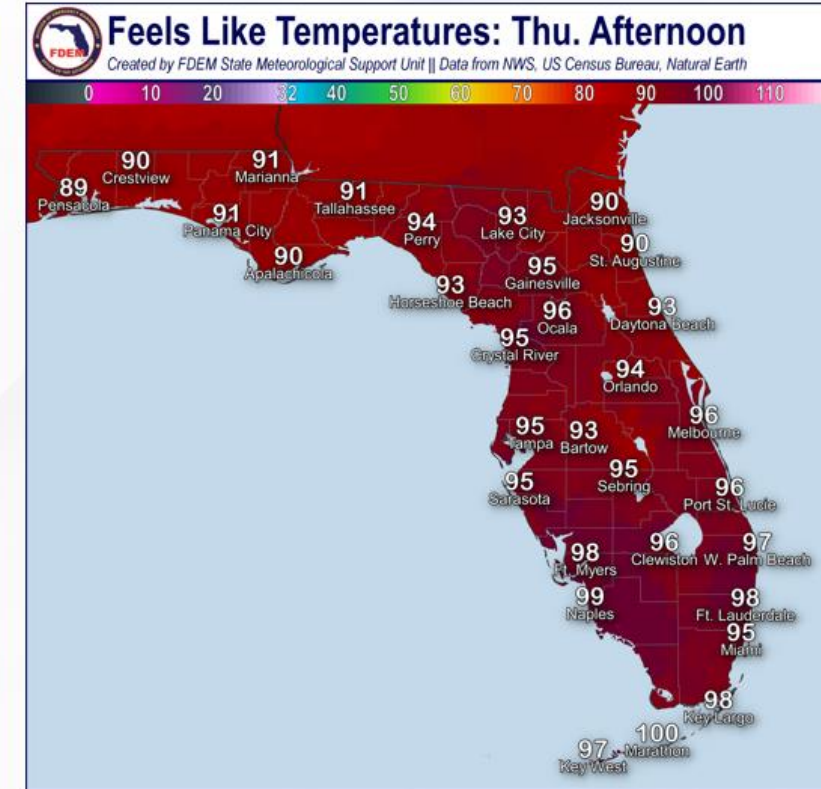
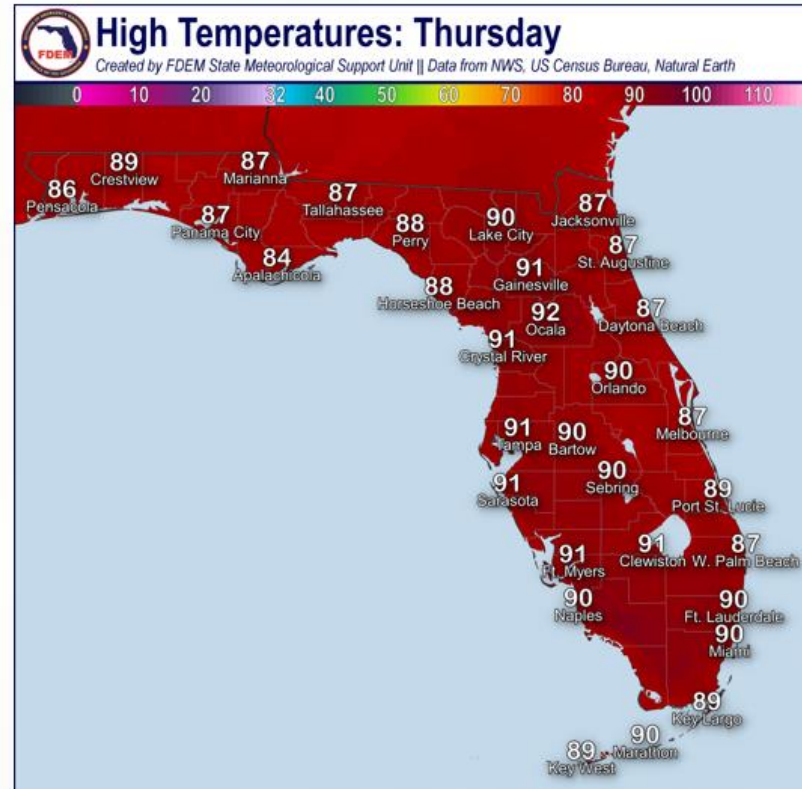
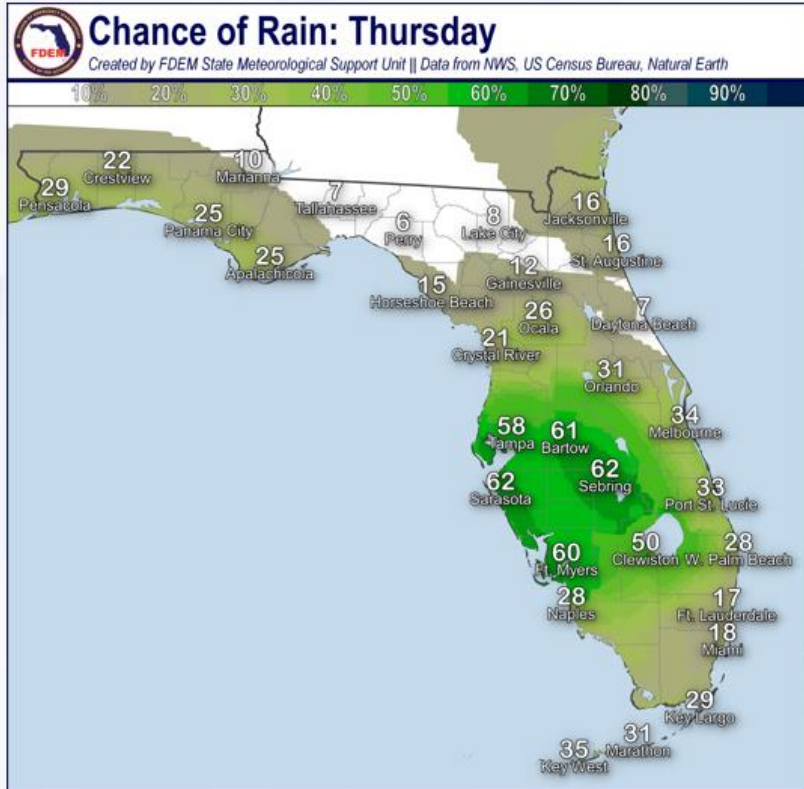
Chance of development through 48 hours... **low...near 0%**

Chance of development through 7 days...**low...30%**



Recovery Weather - Wednesday

Rain Chances, High Temperature & Feels-Like Temperature





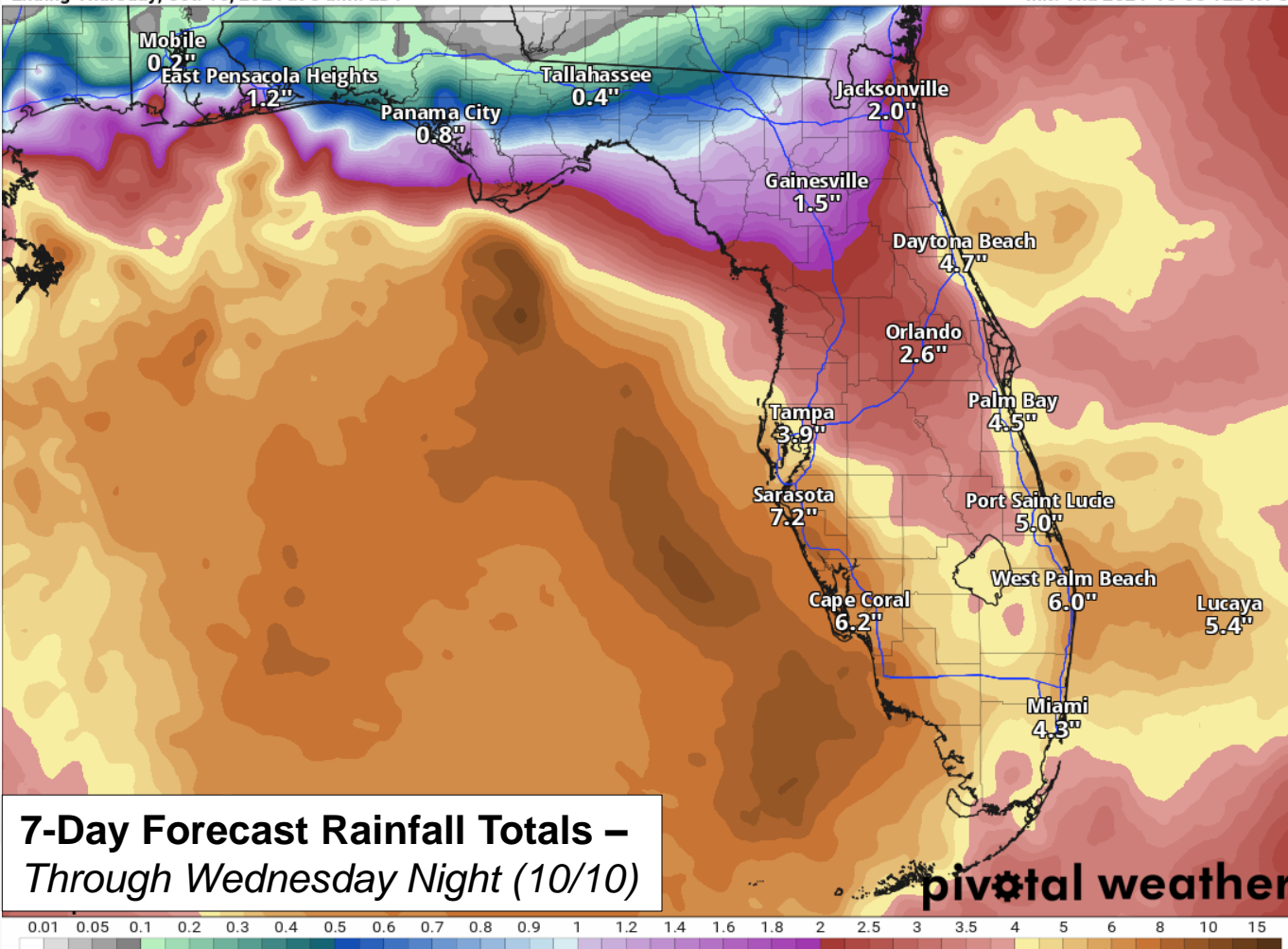
Rainfall Totals – Next 7 Days

From the Weather Prediction Center (WPC)

7-Day Precipitation (in)

Ending Thursday, Oct. 10, 2024 at 8 a.m. EDT

Init: Thu 2024-10-03 12z WPC

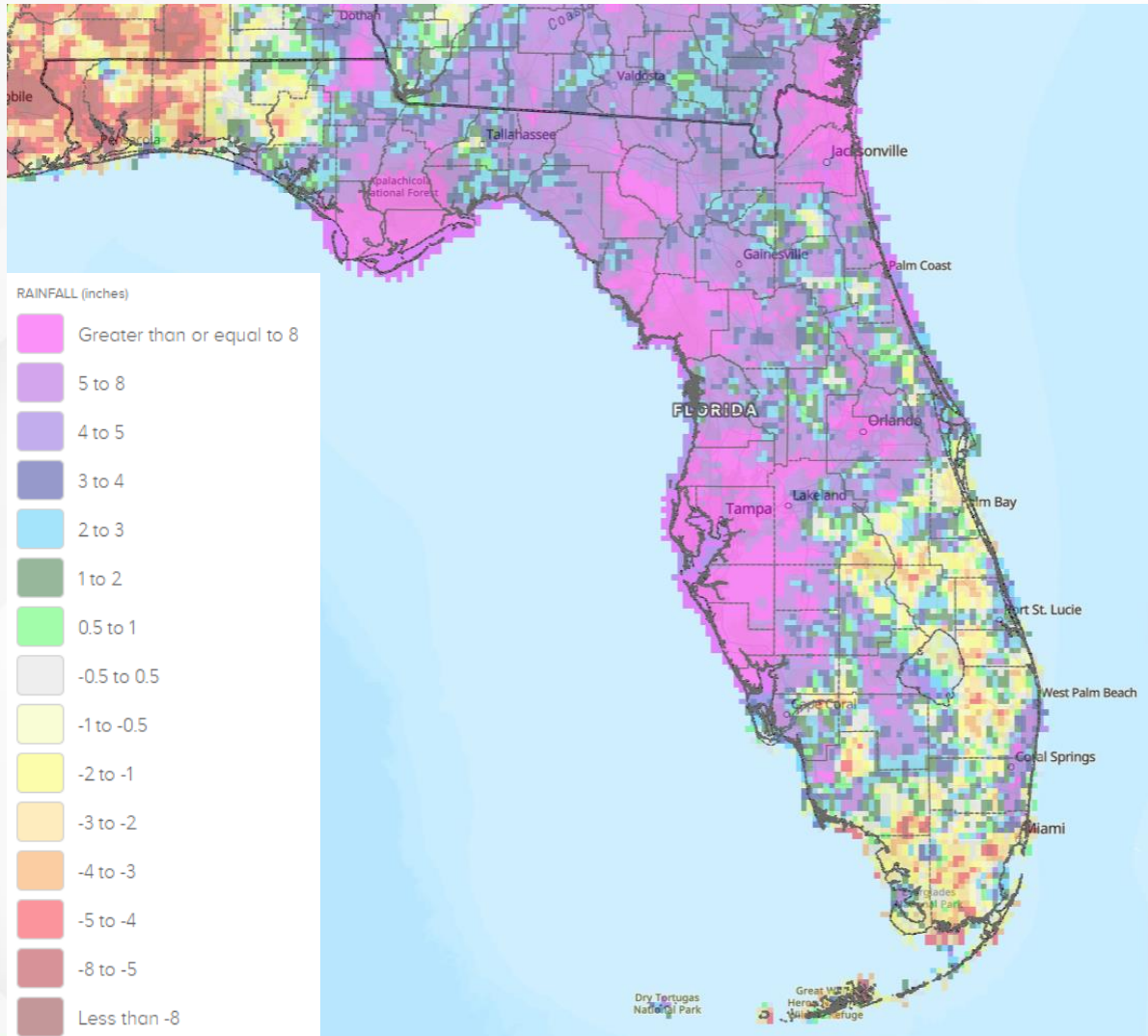


- Scattered showers and thunderstorms are forecast to continue across the state through the rest of the week and into the weekend, with more concentrated rainfall totals arriving later this weekend and next week as we monitor potential development in the Gulf of Mexico.
- Rainfall totals will be highly dependent upon the evolution of the tropical disturbance over the Gulf of Mexico, with most of this activity not beginning until later this weekend or next week.
- A frontal boundary is expected to push through the southeast U.S. late this weekend into early next week, likely interact with the disturbance and supporting a wet and active weather pattern. The timing and placement of these systems and their possible interactions will continue to be monitored.
- There is potential for widespread rainfall totals near 5-8" with **locally higher totals** across portions of the Peninsula over the next 7 days.
 - Computer models are indicating the heaviest rainfall totals may occur across South and Central Florida and north of the I-4 corridor; however, the exact placement of these more significant totals will continue to be modified depending on the tropical disturbance's organization and track.
 - **Please continue to stay tuned for the latest computer forecast model guidance and trends in the subsequent days.**



60-Day Rainfall Departure From Normal

From the National Weather Service



Much of the Big Bend and Northern Peninsula southward through the I-4 corridor and into West-Central and Southwest Florida have experienced rainfall totals greater than 5-10" above normal over the past 60-days. More localized areas have seen rainfall totals near 10-15" above normal over the past 60-days across with isolated higher totals near 15-20" over the past 60 days across portions of Apalachicola, the Suwannee Valley, Northeast Florida, and West-Central Florida.

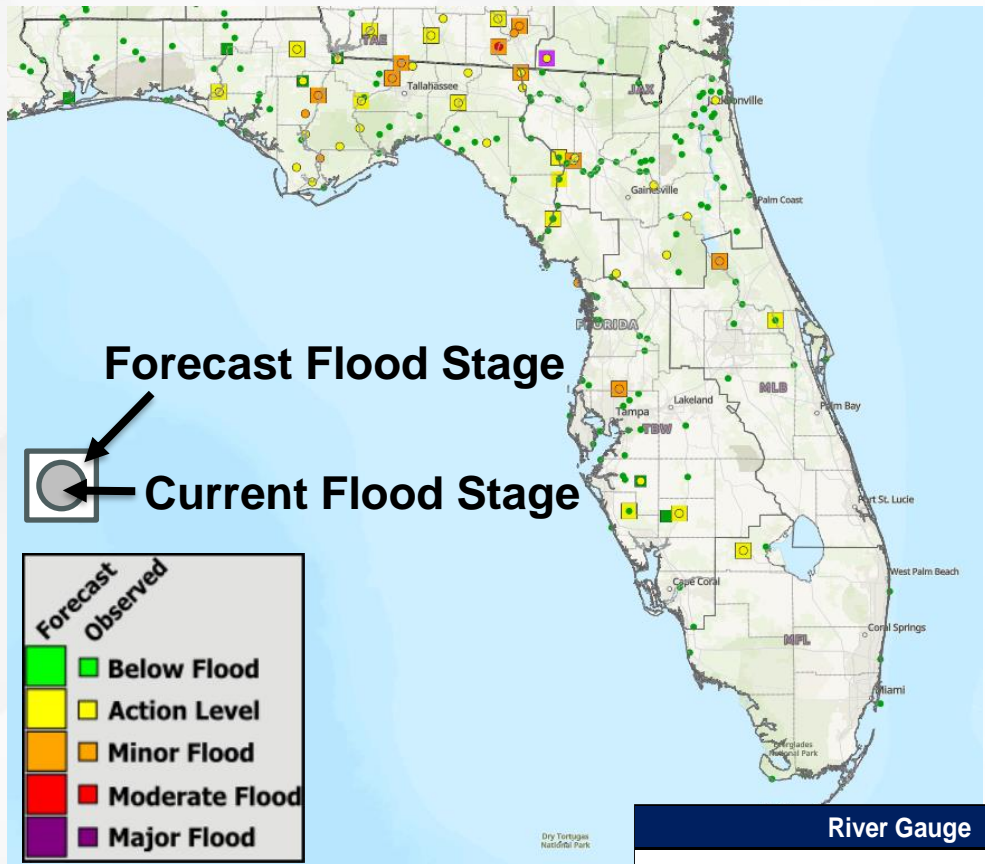
Numerous North, West-Central, and Southwest Florida rivers are already running high and/or within flood stage at this time.

Saturated areas will be more vulnerable to heavy rainfall and a faster onset of flooding.



Current & Forecast River Conditions

From the National Weather Service



A **River Flood Warning** remains in effect along the [St. Johns River at Astor](#) as water levels hold relatively steady within **Minor Flood Stage**.

A **River Flood Warning** has been issued for [Cypress Creek at SR-54](#) as water levels have risen into **Minor Flood Stage** in response to locally heavy rainfall over the past few days.

Several **River Flood Warnings** remain in effect across the eastern Florida Panhandle and Big Bend as elevated water levels continue in the wake of Helene. The [Ochlockonee River near Concord \(CR-12\)](#) and [near Havana \(US-27\)](#) and the [Apalachicola River near Blountstown](#) continue to run in **Minor Flood Stage** as water levels gradually decline.

The [Withlacoochee River near Pinetta \(CR-150\)](#) has seen water levels rise into Action Stage (bank-full) over the last few days and is forecast to reach **Minor Flood Stage** later today.

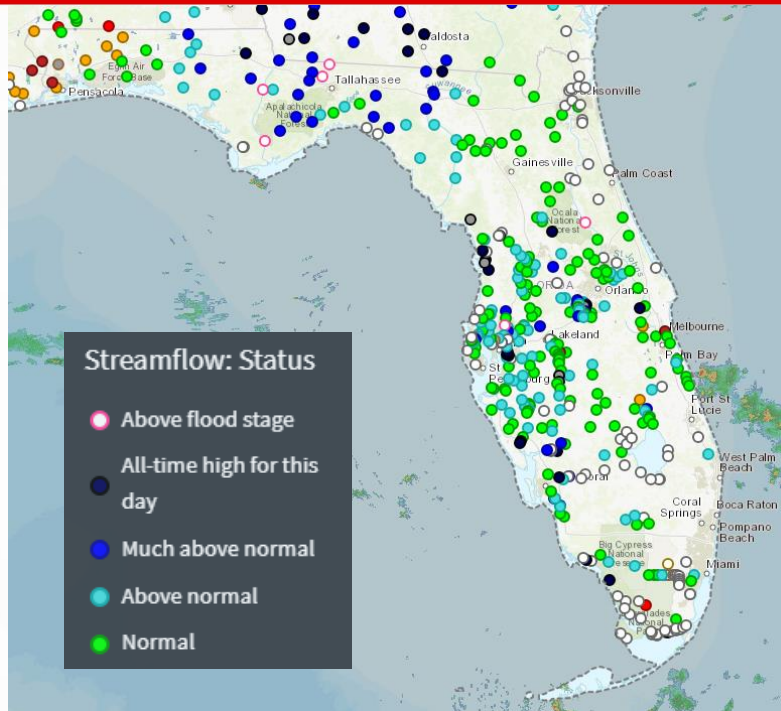
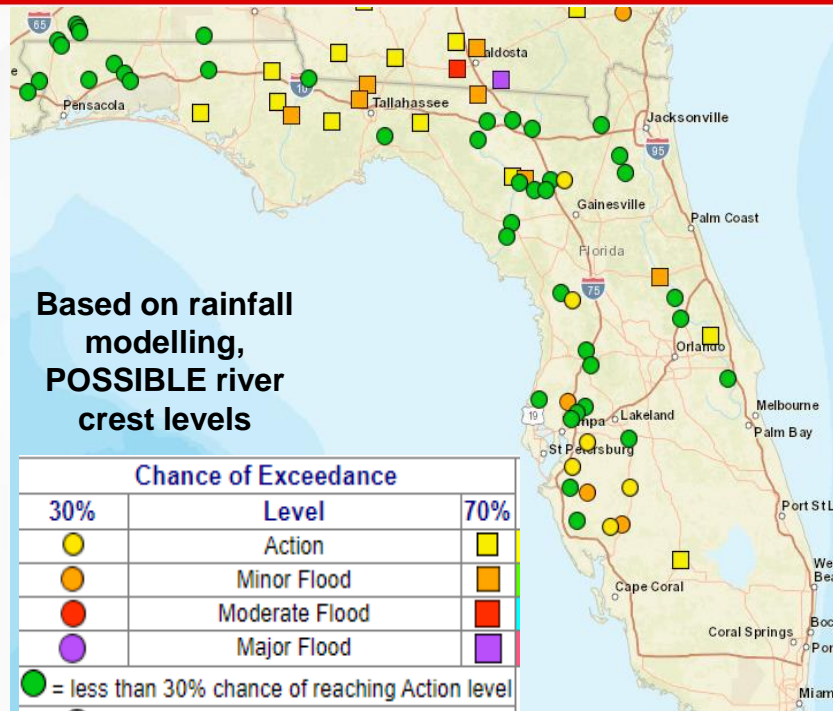
Additional rises in water level will be possible along the Withlacoochee and Ochlockonee Rivers and along Suwannee Valley mainstem rivers (including the Suwannee, Alapaha, and Santa Fe) as excess heavy rainfall discharge through the basin from the Georgia headwaters. With the return of a wet and active weather pattern next week, additional water level rises will be possible along rivers, creeks, and waterways in the Peninsula. For more details, please visit the [River Forecast Center](#).

| River Gauge | County(ies) Affected | Current Level | Crest Level | Record Level | Status | Crest Date | Warning Expires |
|--|----------------------------------|------------------|--------------------|--------------|----------|------------|----------------------|
| Apalachicola River near Blountstown | Calhoun, Franklin, Gulf, Liberty | Minor: 18.91 ft | Minor: 21.00 ft | 28.60 ft | Falling | Crested | 2200 EDT 4-Oct |
| Cypress Creek at SR-54 | Pasco | Minor: 8.07 ft | Minor: 8.10 ft | 13.80 ft | Cresting | 3-Oct | 1400 EDT 4-Oct |
| Ochlockonee River near Concord (CR-12) | Gadsden, Leon | Minor: 36.65 ft | Moderate: 39.80 ft | 45.70 ft | Falling | Crested | 2000 EDT 4-Oct |
| Ochlockonee River near Havana (US-27) | Gadsden, Leon | Minor: 26.59 ft | Minor: 28.38 ft | 35.10 ft | Falling | Crested | 2000 EDT 4-Oct |
| Withlacoochee River near Pinetta | Hamilton, Madison | Action: 70.86 ft | Minor: 78.60 ft | 87.80 ft | Rising | 5-Oct | Until Further Notice |
| St. Johns River at Astor | Volusia, Lake | Minor: 2.44 ft | Minor: 2.70 ft | 4.70 ft | Steady | Crested | 2000 EDT 4-Oct |



Riverine Flooding

Chance of River Flooding Based on Range of Forecast Rainfall



Rivers, creeks/streams, and waterways across North and West-Central Florida are already running above normal for this time of year due to widespread heavy rainfall from Hurricane Debby. Several **River Flood Warnings** remain in effect across several mainstems and branches in the Big Bend including the Apalachicola, Ochlockonee, and Withlacoochee rivers as **minor flooding persists**. Additional **River Flood Warnings** remain in effect for the St. Johns River as minor flooding continues due to trapped tides and Cypress Creek at SR-54 in response to locally heavy rainfall.

Water continues to filter through the river basins and further downstream from heavy rainfall across the Southeast U.S. from Hurricane Helene over the next few weeks. Computer models are suggesting the potential for **minor flooding** along portions of the Suwannee River as excess heavy rainfall discharge through the basin from the Georgia headwaters with **minor backwater flooding** possible along the Santa Fe River. The Alapaha River near Jennings may also see water levels rise above flood stage in the coming weeks as the Alapaha River at Statenville, Georgia crests in major flood stage early next week and the crest wave moves further downstream. Additional heavy rainfall is expected this weekend as a frontal boundary likely interacts with the tropical disturbance in the Gulf of Mexico and supports a wet and active weather pattern, likely leading to water level rises in the Peninsula.



Summary

FOUO – For Government Official Use Only

Major Hurricane Kirk:

- As of 11:00 AM EDT, Kirk is located about 1130 miles east of the Northern Leeward Islands or 1660 miles southwest of the Azores and moving northwestward at 10 mph.
- This general motion is expected to continue through early Friday. A turn toward the north and north-northeast at a faster forward speed is forecast over the weekend.
- Maximum sustained winds are near 125 mph with higher gusts, making Kirk a Category 3 hurricane on the Saffir-Simpson scale.
- Some strengthening is forecast during the next day or so.
- *Kirk poses no direct threat to Florida at this time.*

Tropical Storm Leslie:

- As of 11:00 AM EDT, Leslie is located about 540 miles southwest of the southernmost Cabo Verde Islands and moving westward at 5 mph.
- A slow westward motion is expected through tonight, followed by a slightly faster west-northwestward motion Friday through Saturday.
- Maximum sustained winds have increased to near 45 mph with higher gusts.
- Strengthening is anticipated, and Leslie is forecast to become a hurricane in a day or so.
- *This system poses no direct threat to Florida over the next 10 days, at least.*

Gulf of Mexico:

- Disorganized showers and thunderstorms over portions of the Gulf of Mexico are associated with a surface trough.
- A broad area of low pressure is likely to develop over the Gulf of Mexico late this weekend or early next week, but subsequent tropical or subtropical development could be limited by the system's potential interaction with a frontal boundary.
- *Regardless of development, locally heavy rains could occur over portions of Mexico during the next few days and over portions of the Florida Peninsula next week.*
- The NHC is outlooking a **low (near 0%) chance of development** over the next 48 hours, and a **low (30%) chance of development** over the next 7 days.

The next name on the list is Milton (*MIL-ton*).

The next briefing packet will be issued on Friday morning. For the latest information, please visit the National Hurricane Center website.



Summary

FOUO – For Government Official Use Only

Florida Outlook:

- Increasing moisture along the Florida Panhandle will allow isolated to scattered showers and thunderstorms to develop throughout the day, with the bulk of activity remaining closer to the coast and over coastal waters.
- Central Florida will continue to see scattered showers and thunderstorms with the sea breezes in the afternoon and evening with isolated to scattered activity extending across the Northern Peninsula and South Florida.
- An isolated strong thunderstorm or two may be possible during the peak heating hours of the day.
- Locally heavy downpours along urban and low-lying/poor drainage areas and over saturated grounds, especially with slow moving or training shower and thunderstorm activity, may give way to localized instances of flooding.
 - Coastal and low-lying areas along Florida's Gulf Coast will remain vulnerable to additional rounds of rainfall thanks to recent and lingering flooding and saturated grounds.
- Several **River Flood Warnings** remain in effect across the eastern Florida Panhandle and Big Bend as elevated water levels continue in the wake of Helene.
 - Water levels along the Ochlockonee River near Concord (CR-12) and near Havana (US-27) and the Apalachicola River near Blountstown continue to run in **Minor Flood Stage** as water levels gradually decline.
 - The Withlacoochee River near Pinetta (CR-150) is forecast to reach **Minor Flood Stage** later today.
 - Cypress Creek at SR-54 has risen into **Minor Flood Stage** in response to locally heavy rainfall over the past few days.
 - Additional rises in water level will be possible along the Withlacoochee and Ochlockonee Rivers and along Suwannee Valley mainstem rivers (including the Suwannee, Alapaha, and Santa Fe) as excess heavy rainfall discharge through the basin from the Georgia headwaters. With the return of a wet and active weather pattern next week, additional water level rises will be possible along rivers, creeks, and waterways in the Peninsula.
- Rainfall totals will be highly dependent upon the evolution of the tropical disturbance over the Gulf of Mexico, with most of this activity not beginning until later this weekend or next week.
 - There is potential for widespread rainfall totals near 5-8" with **locally higher totals** across portions of the Peninsula over the next 7 days.
 - Computer models are indicating the heaviest rainfall totals may occur across South and Central Florida and north of the I-4 corridor; however, the exact placement of these more significant totals will continue to be modified depending on the tropical disturbance's organization and track.
 - A frontal boundary is expected to push through the southeast U.S. late this weekend into early next week, likely interact with the disturbance and supporting a wet and active weather pattern; The timing and placement of these systems and their possible interactions will continue to be monitored.
 - **Please continue to stay tuned for the latest computer forecast model guidance and trends in the subsequent days.**

The next briefing packet will be issued on Friday morning. For the latest information, please visit the [National Hurricane Center website](#).



Tropical Update

FOUO – For Government Official Use Only



Created by:

Melissa James, Assistant State Meteorologist

Melissa.James@em.myflorida.com

State Meteorological Support Unit

Florida Division of Emergency Management

Users wishing to subscribe (approval pending) to this distribution list, register at:

https://public.govdelivery.com/accounts/FLDEM/subscriber/new?topic_id=SERT_Met_Tropics.

Other reports available for subscription are available at:

<https://public.govdelivery.com/accounts/FLDEM/subscriber/new?preferences=true>