



# Tropical Update



11:00 AM EDT

Friday, June 28, 2024

**Invest 95L (90%) Likely to Become the Next Named  
Tropical System Later Today or Early Saturday;**

**Low Chances of Tropical Development Near the Yucatan Peninsula  
(30%) & Across the Eastern Tropical Atlantic (20%)**

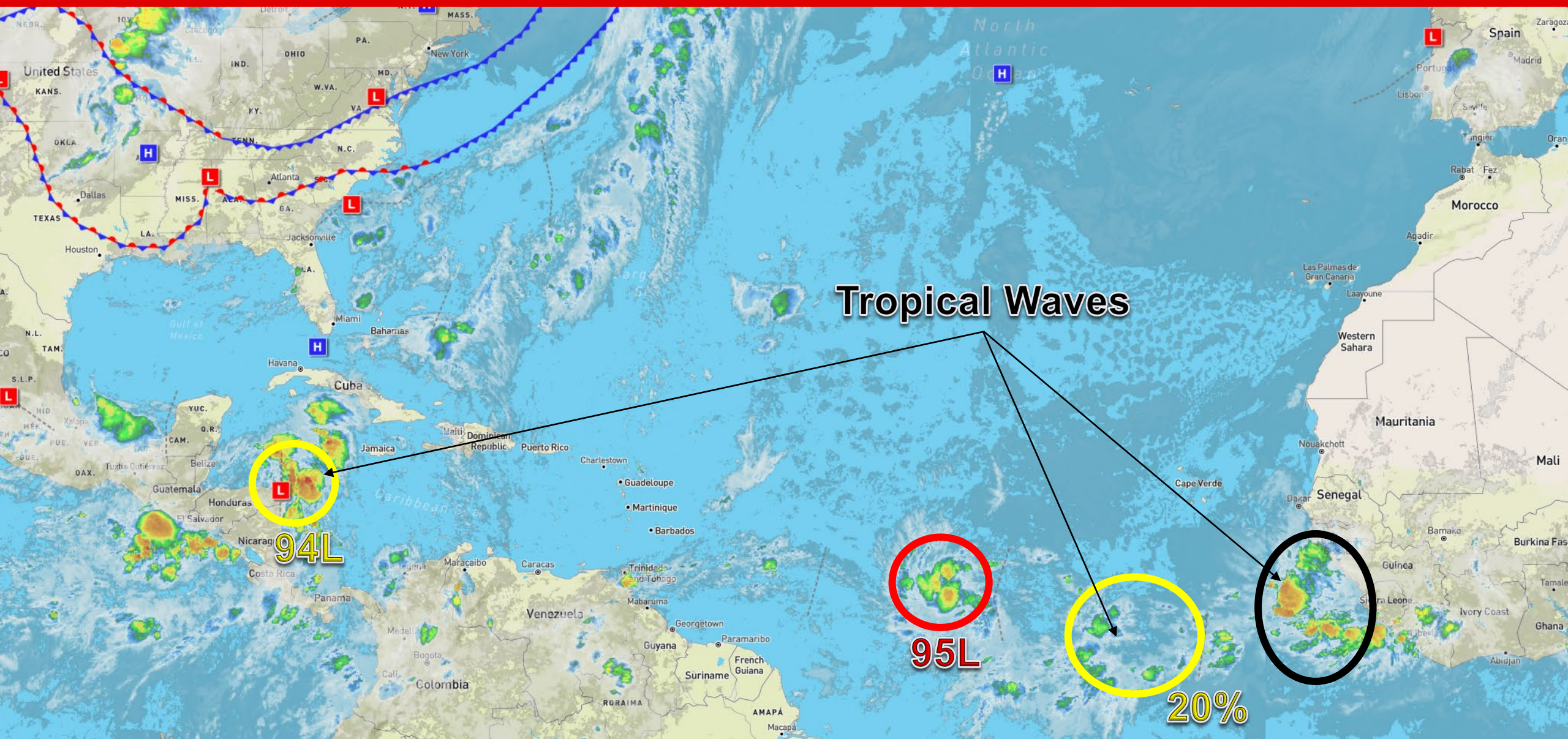
This update is intended for government and emergency response officials, and is provided for informational and situational awareness purposes only. Forecast conditions are subject to change based on a variety of environmental factors. For additional information, or for any life safety concerns with an active weather event please contact your County Emergency Management or Public Safety Office, local National Weather Service forecast office, or visit the National Hurricane Center website at [www.hurricanes.gov](http://www.hurricanes.gov).





# Atlantic Basin Satellite Image

Chance of development:    None    Low    Medium    High







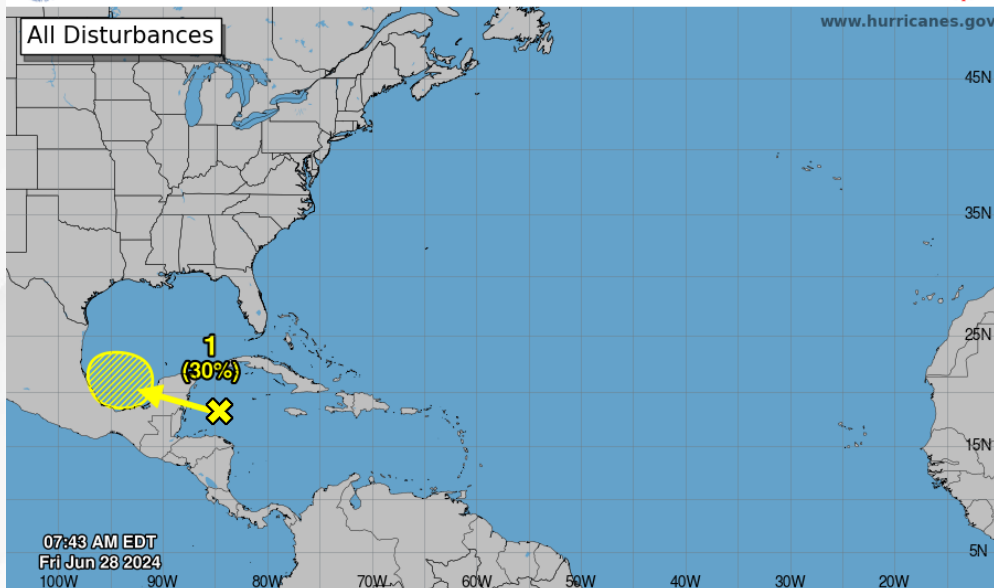
# Tropical Weather Outlook

## Disturbance 1 – Invest 94L ([LINK](#))

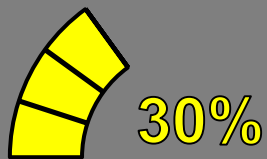


### Seven-Day Graphical Tropical Weather Outlook

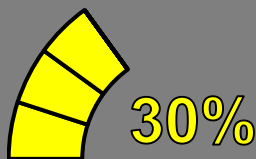
National Hurricane Center Miami, Florida



Current Disturbances and Seven-Day Cyclone Formation Chance: < 40% 40-60% > 60%  
Tropical or Sub-Tropical Cyclone: Depression Storm Hurricane  
 Post-Tropical Cyclone or Remnants



48 Hour Formation



7 Day Formation

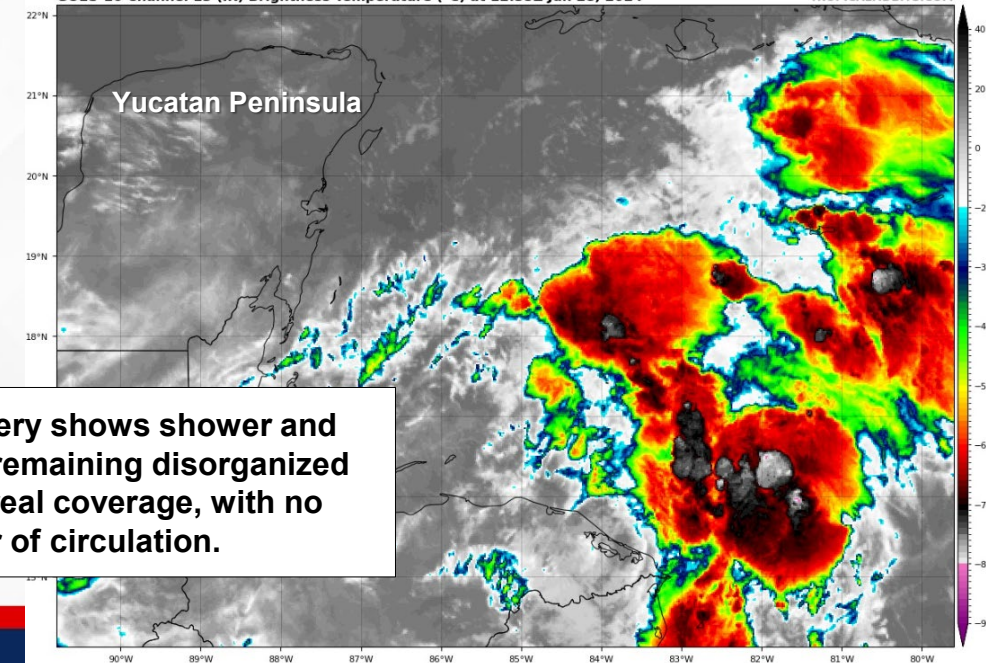
A broad area of low pressure over the western Caribbean Sea, associated with a tropical wave, continues to produce widespread shower and thunderstorm activity. Development of Invest 94L is not expected today while it moves west-northwestward at 15 mph. Invest 94L is forecast to move westward over the Yucatan Peninsula and emerge over the Bay of Campeche late Saturday or early Sunday, at which point development will be possible.

*This system poses no threat to Florida.*

\* Formation chance through 48 hours...**low...30%**

\* Formation chance through 7 days...**low...30%**

GOES-16 Channel 13 (IR) Brightness Temperature (°C) at 12:35Z Jun 28, 2024



Current satellite imagery shows shower and thunderstorm activity remaining disorganized and widespread in areal coverage, with no defined center of circulation.

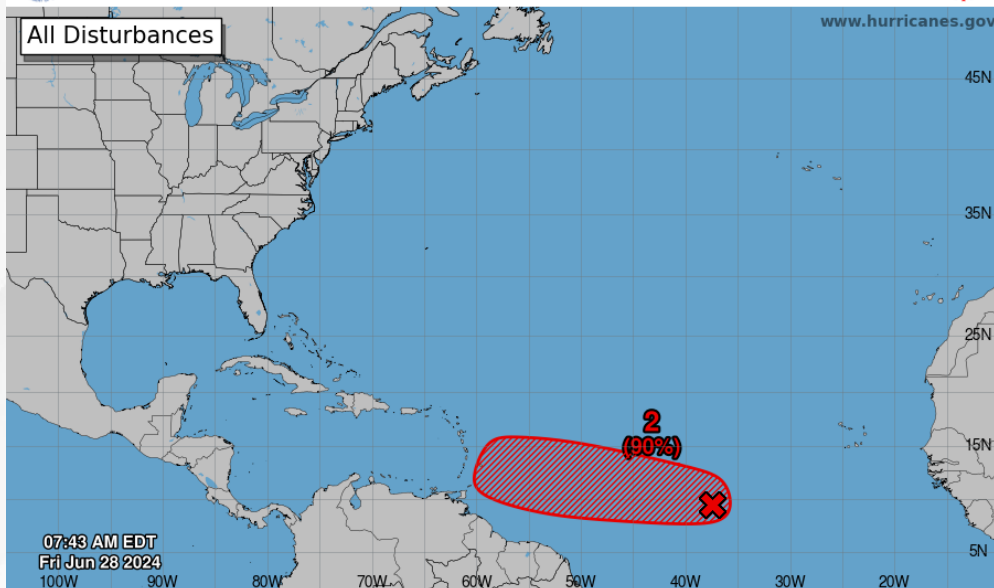


# Tropical Weather Outlook

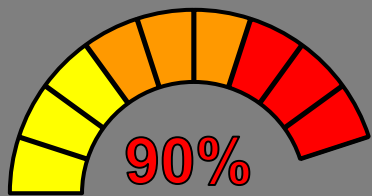
## Disturbance 2 – Invest 95L ([LINK](#))



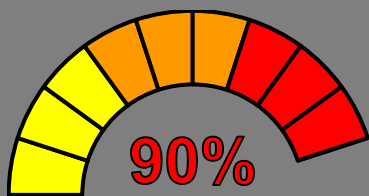
### Seven-Day Graphical Tropical Weather Outlook National Hurricane Center Miami, Florida



Current Disturbances and Seven-Day Cyclone Formation Chance: ✕ < 40% ✕ 40-60% ✕ > 60%  
Tropical or Sub-Tropical Cyclone: ○ Depression ○ Storm ○ Hurricane  
○ Post-Tropical Cyclone or Remnants



48 Hour Formation



7 Day Formation

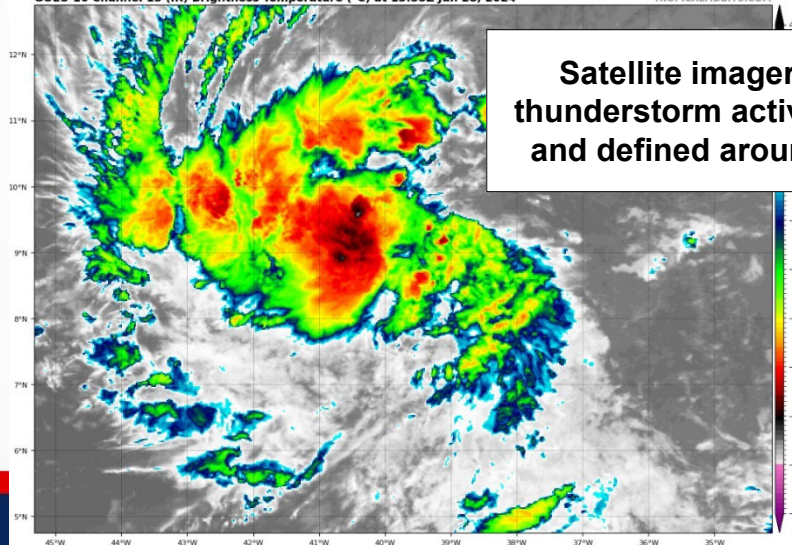
A low pressure system, located about 1,500 miles east-southeast of the Windward Islands, is gradually becoming better defined. Showers and thunderstorms are also showing signs of organization, and a tropical depression or tropical storm will likely form later today or on Saturday. Invest 95L is expected to move westward at 15 to 20 mph and approach the Lesser Antilles by the end of the weekend.

*Invest 95L poses no direct threat to Florida over the next 7 days, but this system will be monitored this weekend into next week.*

\* Formation chance through 48 hours...**high...90%**

\* Formation chance through 7 days...**high...90%**

GOES-16 Channel 13 (IR) Brightness Temperature (°C) at 13:35Z Jun 28, 2024



**Satellite imagery this morning shows shower and thunderstorm activity becoming increasingly organized and defined around Invest 95L's center of circulation.**



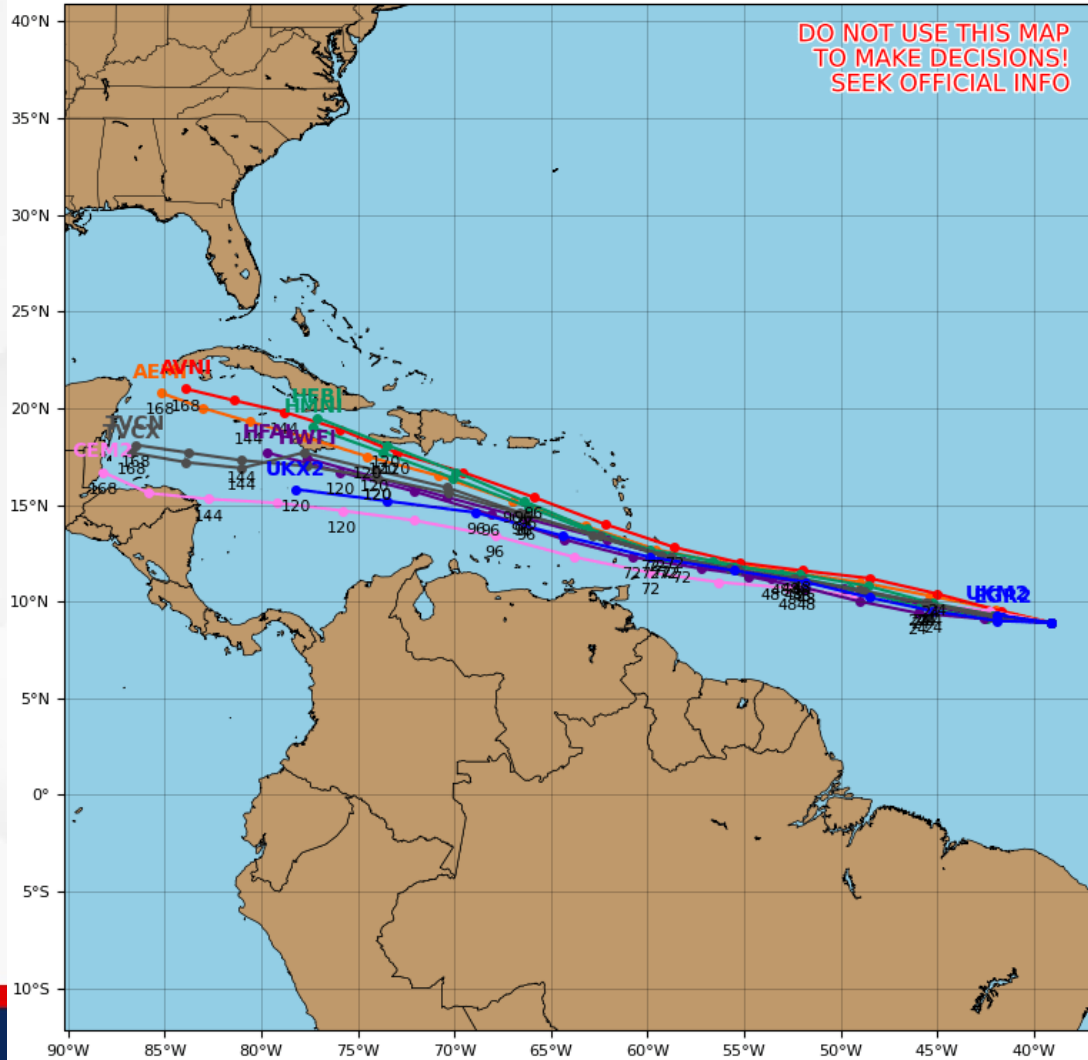
# Model Forecasts – Next 5 Days

## Invest 95L

### Invest 95L Model Track Guidance

Initialized at 12z Jun 28 2024

Levi Cowan - tropicaltidbits.com



Computer model guidance this morning remains in very good agreement that Invest 95L will maintain its general westward motion over the next 3 to 4 days, with the system approaching the Windward Islands in the next 48 to 72 hours. Computer models increase in uncertainty during the 4 to 5-day timeframe in both forward speed and forecast track; however, the consensus shows Invest 95L moving slightly north of west over the central Caribbean Sea mid-next week.

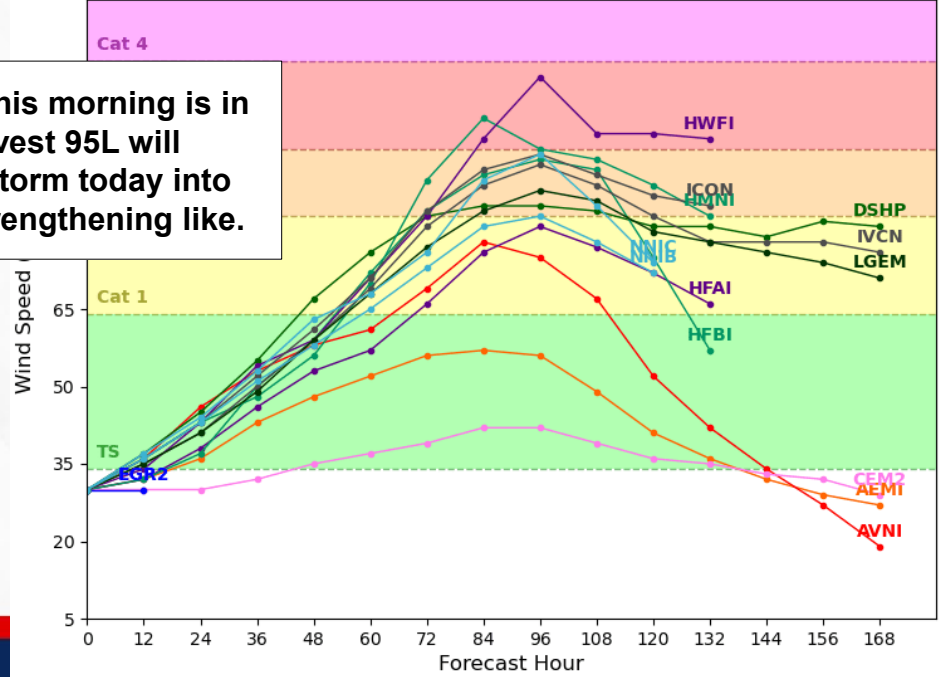
Computer models are in very good agreement that Invest 95L will become the second named tropical system of the season later today or tonight. Guidance remains in agreement that Invest 95L looks to strengthen thereafter, with consensus of Invest 95L becoming a hurricane within the next 3 to 4 days. Intensity forecasts will become clearer as Invest 95L evolves into a well-defined tropical system.

### Invest 95L Model Intensity Guidance

Initialized at 12z Jun 28 2024

Levi Cowan - tropicaltidbits.com

Computer model guidance this morning is in good agreement that Invest 95L will strengthen into a tropical storm today into Saturday, with additional strengthening like.

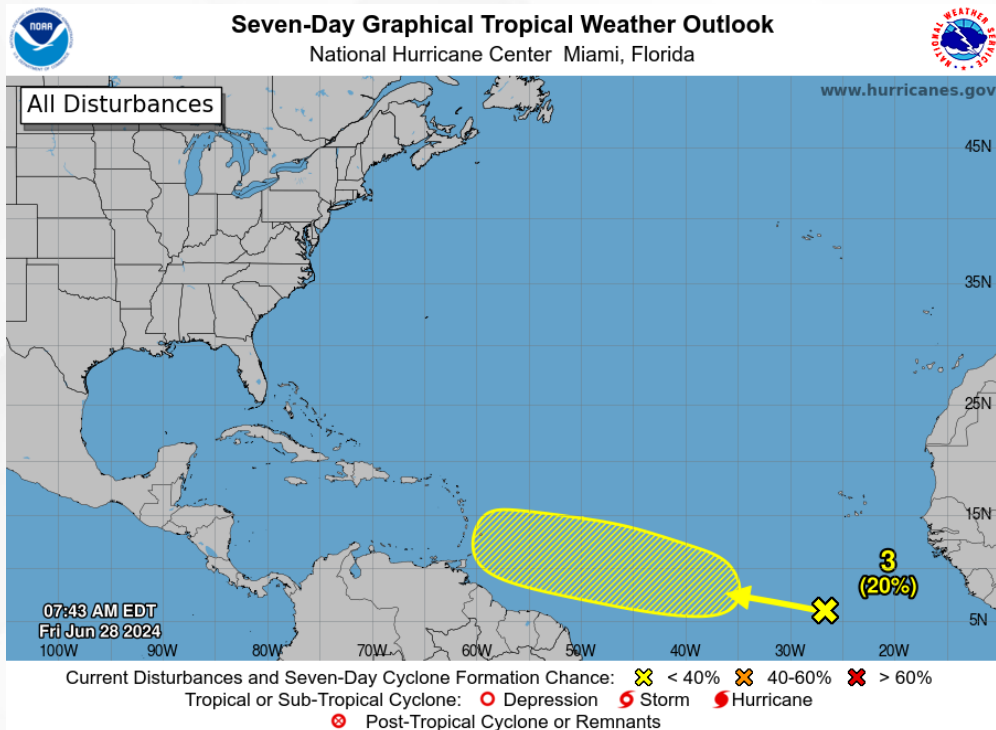






# Tropical Weather Outlook

Disturbance 3 – Eastern Tropical Atlantic ([LINK](#))



Near 0%

48 Hour Formation



20%

7 Day Formation

A tropical wave centered several hundred miles south-southwest of the Cabo Verde Islands is producing disorganized showers and thunderstorms. Some slow development of this system is possible next week while it moves generally westward across the central and western tropical Atlantic at 15 to 20 mph.

*This system poses no threat to Florida over the next 7 to 10 days, at least.*

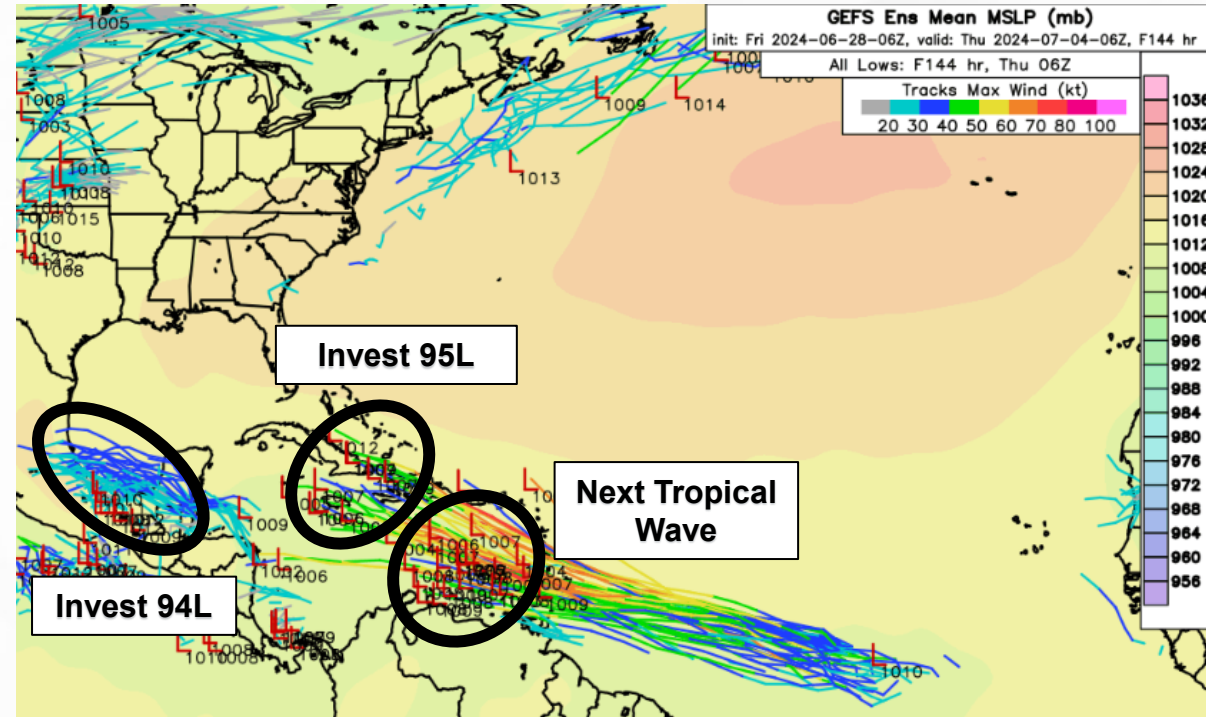
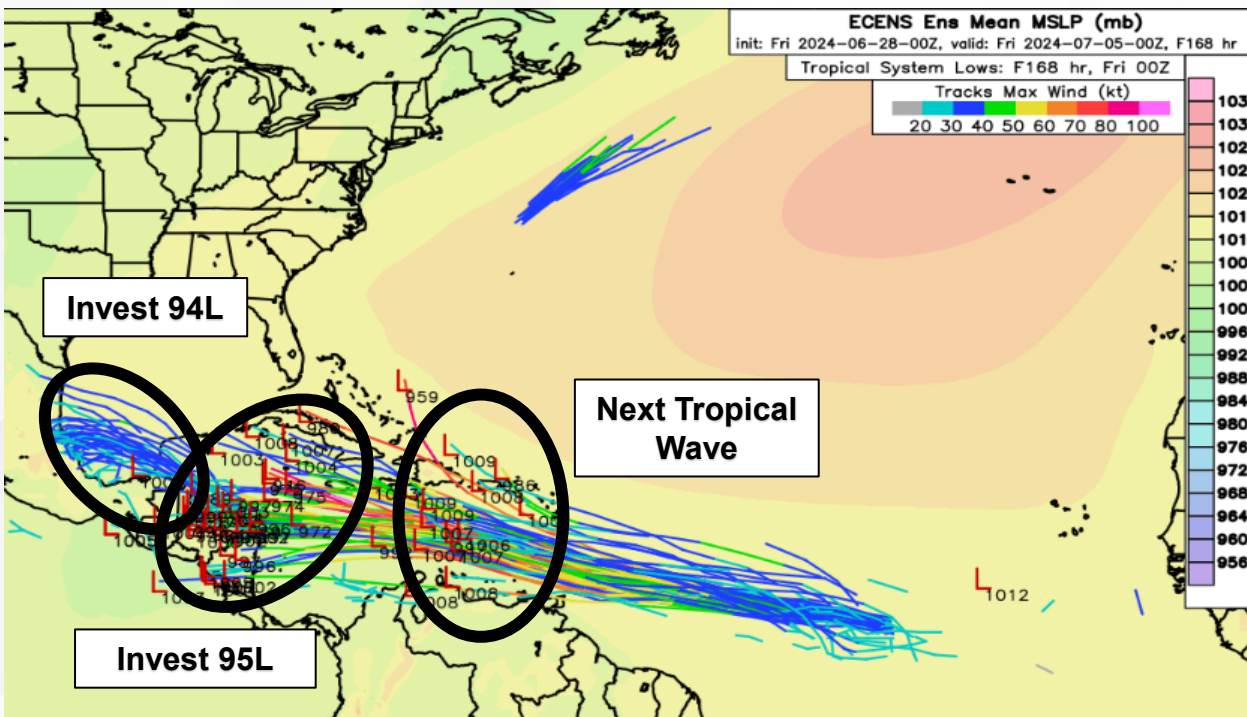
\* Formation chance through 48 hours...low...near 0%

\* Formation chance through 7 days...low...20%



# Model Forecasts – Next 7 Days

## Atlantic Basin



Computer forecast models are in good agreement that Invest 94L will continue moving west-northwestward over the western Caribbean Sea, approaching the Yucatan Peninsula today into Saturday. The system could then emerge over the Bay of Campeche and southwestern Gulf of Mexico this weekend and early next week, taking a similar path as Invest 93L and Tropical Storm Alberto into northeastern Mexico.

Computer models maintain their strong signal for Invest 95L as it approaches the Windward Islands and the eastern Caribbean Sea this weekend and into early next week. There continues to be an increase in spread of solutions and overall forecast track uncertainty beyond the 4-day timeframe, as the European forecast model shows Invest 95L remaining further south as opposed to the American forecast model showing a further north eventual track. As Invest 95L works to become an established tropical system, forecast computer models will work toward a consensus; trends will be monitored as we enter the weekend and early next week.



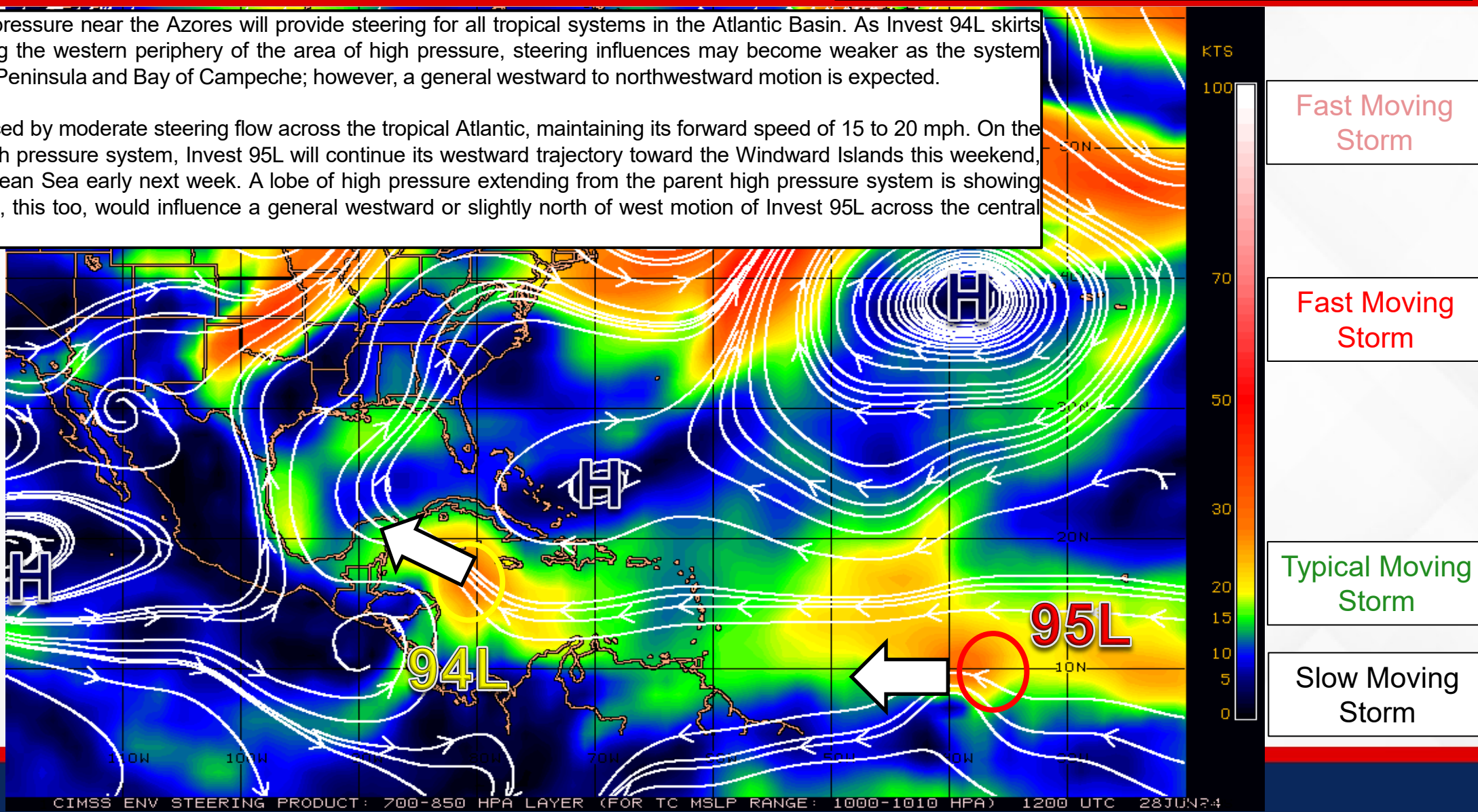
# Steering Currents

## What is Moving the System?

Color denotes the movement speed through the atmosphere and thin white lines denote direction. Tightly clustered white lines represent faster movement as well.

The strong area of high pressure near the Azores will provide steering for all tropical systems in the Atlantic Basin. As Invest 94L skirts west-northwestward along the western periphery of the area of high pressure, steering influences may become weaker as the system approaches the Yucatan Peninsula and Bay of Campeche; however, a general westward to northwestward motion is expected.

Invest 95L will be influenced by moderate steering flow across the tropical Atlantic, maintaining its forward speed of 15 to 20 mph. On the southern fringe of the high pressure system, Invest 95L will continue its westward trajectory toward the Windward Islands this weekend, and enter into the Caribbean Sea early next week. A lobe of high pressure extending from the parent high pressure system is showing just east of the Bahamas, this too, would influence a general westward or slightly north of west motion of Invest 95L across the central Caribbean Sea.







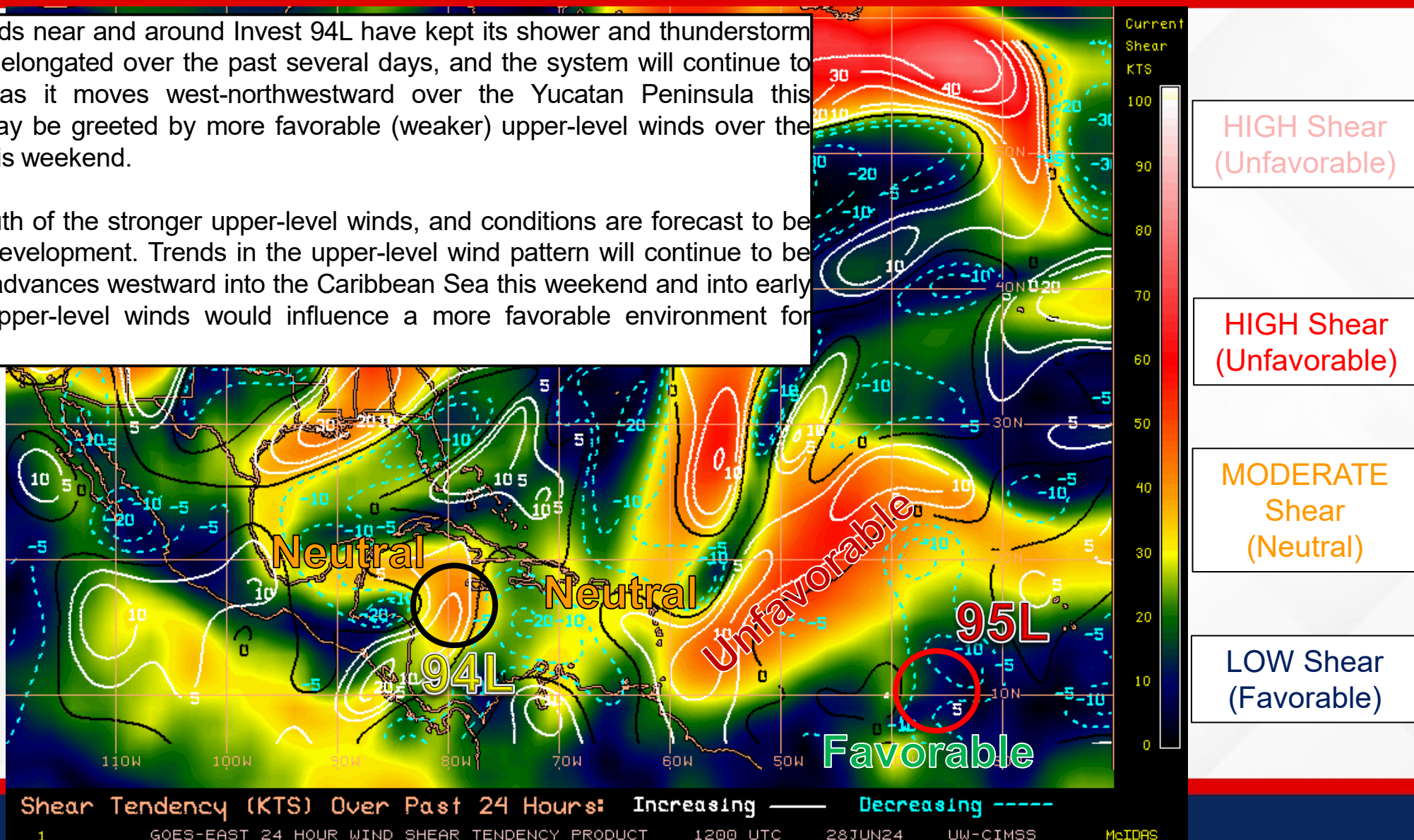
# Wind Shear

## Is the environment favorable for the system?

Color denotes the amount of wind shear and the lines denote how it have changed over the last 24 hours (dotted lines show decreasing shear and solid lines show increasing).

Moderate upper-level winds near and around Invest 94L have kept its shower and thunderstorm activity disorganized and elongated over the past several days, and the system will continue to experience wind shear as it moves west-northwestward over the Yucatan Peninsula this weekend. The system may be greeted by more favorable (weaker) upper-level winds over the Bay of Campeche later this weekend.

Invest 95L is residing south of the stronger upper-level winds, and conditions are forecast to be generally conducive for development. Trends in the upper-level wind pattern will continue to be monitored as Invest 95L advances westward into the Caribbean Sea this weekend and into early next week as weaker upper-level winds would influence a more favorable environment for additional strengthening.



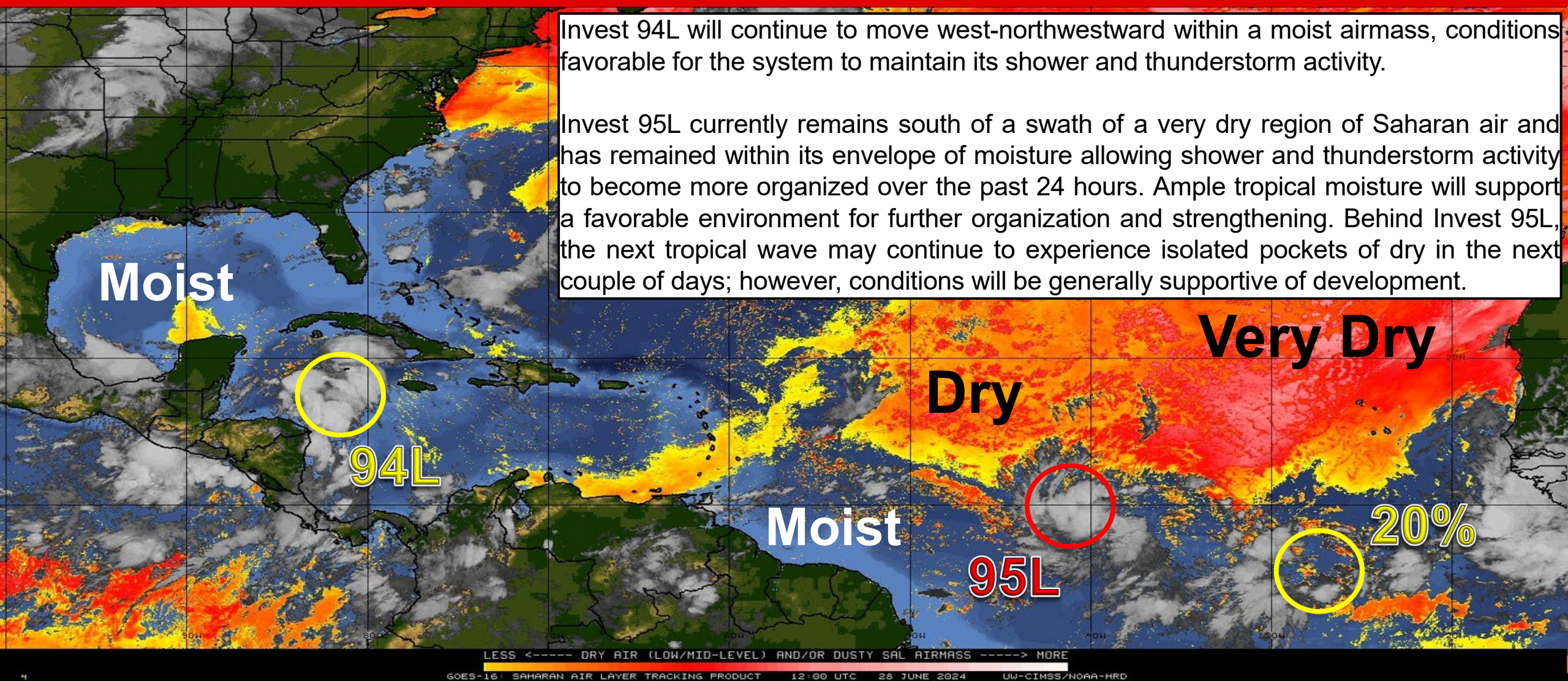




# Dry Air & Saharan Dust

Is the environment favorable for the system?

Color denotes concentration of Saharan Dust or dry, stable air.



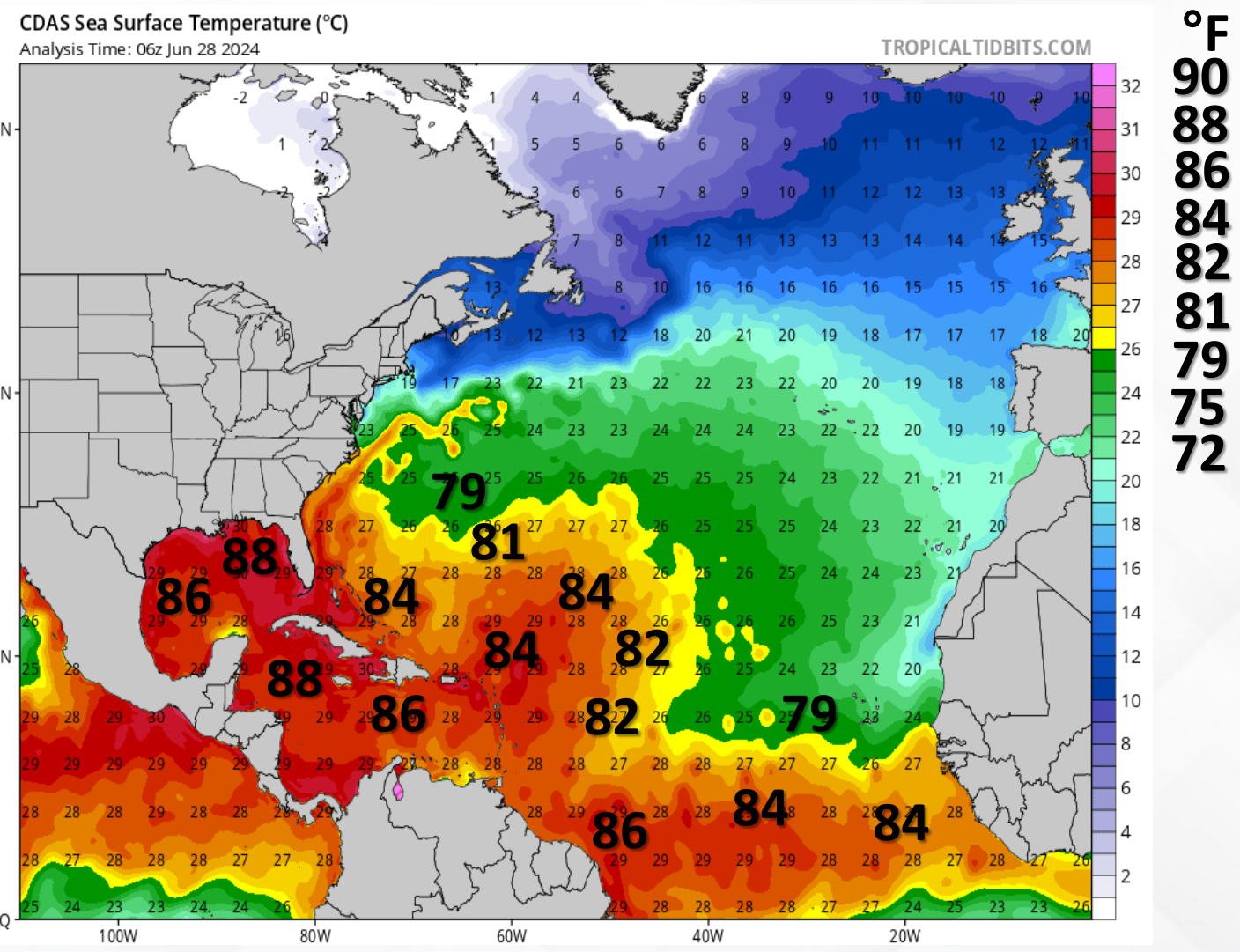
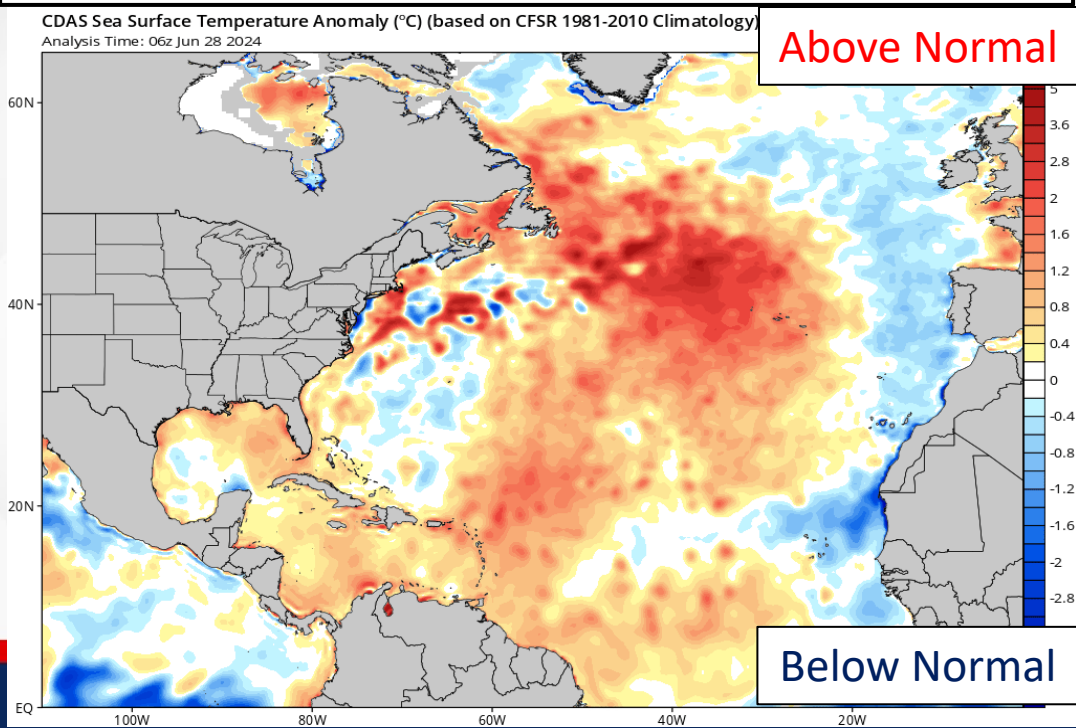




# Sea Surface Temperatures & Anomalies

Is the ocean favorable for the system?

Temperatures across the Atlantic Basin are supportive of tropical cyclone development. Waters across the deep tropical Atlantic and Gulf of Mexico 0.5 to 1.5-degrees above normal for this time of year.





# Summary

## Invest 94L – Western Caribbean/Southwestern Gulf of Mexico:

- A broad area of low pressure over the western Caribbean Sea, associated with a tropical wave, continues to produce widespread shower and thunderstorm activity.
- Development of Invest 94L is not expected today while it moves west-northwestward at 15 mph.
- Invest 94L is forecast to move westward over the Yucatan Peninsula and emerge over the Bay of Campeche late Saturday or early Sunday, at which point development will be possible.
- The National Hurricane Center is outlooking a **low (30%) chance of development** over the next 48 hours and 7 days; *this system poses no threat to Florida.*

## Invest 95L – Eastern Tropical Atlantic:

- A low pressure system, located about 1,500 miles east-southeast of the Windward Islands, is gradually becoming better defined.
- Showers and thunderstorms are also showing signs of organization, and a tropical depression or tropical storm will likely form later today or on Saturday.
- Invest 95L is expected to move westward at 15 to 20 mph and approach the Lesser Antilles by the end of the weekend.
- The National Hurricane Center is outlooking a **high (90%) chance of development** over the next 48 hours.
- *Invest 95L poses no threat to Florida over the next 7 days, but this system will be monitored this weekend into next week.*

## Eastern Tropical Atlantic Wave:

- A tropical wave centered several hundred miles south-southwest of the Cabo Verde Islands is producing disorganized showers and thunderstorms.
- Some slow development of this system is possible next week while it moves generally westward across the central and western tropical Atlantic at 15 to 20 mph.
- The National Hurricane Center is outlooking a **low (near 0%) chance of development** over the next 48 hours, and a **low (20%) chance of development** over the next 7 days.
- *This system poses no threat to Florida over the next 7 to 10 days, at least.*

## Florida Outlook:

- Higher coverage of scattered to numerous showers and thunderstorms expected statewide again today (55-90% chance of rain).
- A few thunderstorms may be strong to severe during the daytime heating hours, and capable of producing frequent lightning and gusty winds (45 to 60 mph).
- Nuisance flooding and ponding water will be possible along the urban corridors of the Sunshine State as slow-moving thunderstorms produce locally heavy rainfall rates and downpours.
- Heat Advisories are in effect this afternoon for the southeastern Florida Peninsula where temperatures will feel like 105 to 110-degrees; triple digit heat indices can be expected elsewhere.
- The next name on the list is Beryl (*BEHR-ril*).

The next briefing packet will be issued Saturday. For the latest information, please visit the [National Hurricane Center website](#).





# Tropical Update



Created by:

**Caitlyn Gillespie, Deputy State Meteorologist**

**[Caitlyn.Gillespie@em.myflorida.com](mailto:Caitlyn.Gillespie@em.myflorida.com)**

**State Meteorological Support Unit**

**Florida Division of Emergency Management**

Users wishing to subscribe (approval pending) to this distribution list, register at:

**[https://public.govdelivery.com/accounts/FLDEM/subscriber/new?topic\\_id=SERT\\_Met\\_Tropics](https://public.govdelivery.com/accounts/FLDEM/subscriber/new?topic_id=SERT_Met_Tropics)**

Other reports available for subscription are available at:

**<https://public.govdelivery.com/accounts/FLDEM/subscriber/new?preferences=true>**