



# Tropical Update



10:45 AM EDT

Thursday, June 27, 2024

**Invest 94L (30%) to Move West-Northwest Toward the Yucatan Peninsula; Invest 95L (70%) Working to Become More Organized in the Eastern Tropical Atlantic**

This update is intended for government and emergency response officials, and is provided for informational and situational awareness purposes only. Forecast conditions are subject to change based on a variety of environmental factors. For additional information, or for any life safety concerns with an active weather event please contact your County Emergency Management or Public Safety Office, local National Weather Service forecast office, or visit the National Hurricane Center website at [www.hurricanes.gov](http://www.hurricanes.gov).





# Atlantic Basin Satellite Image

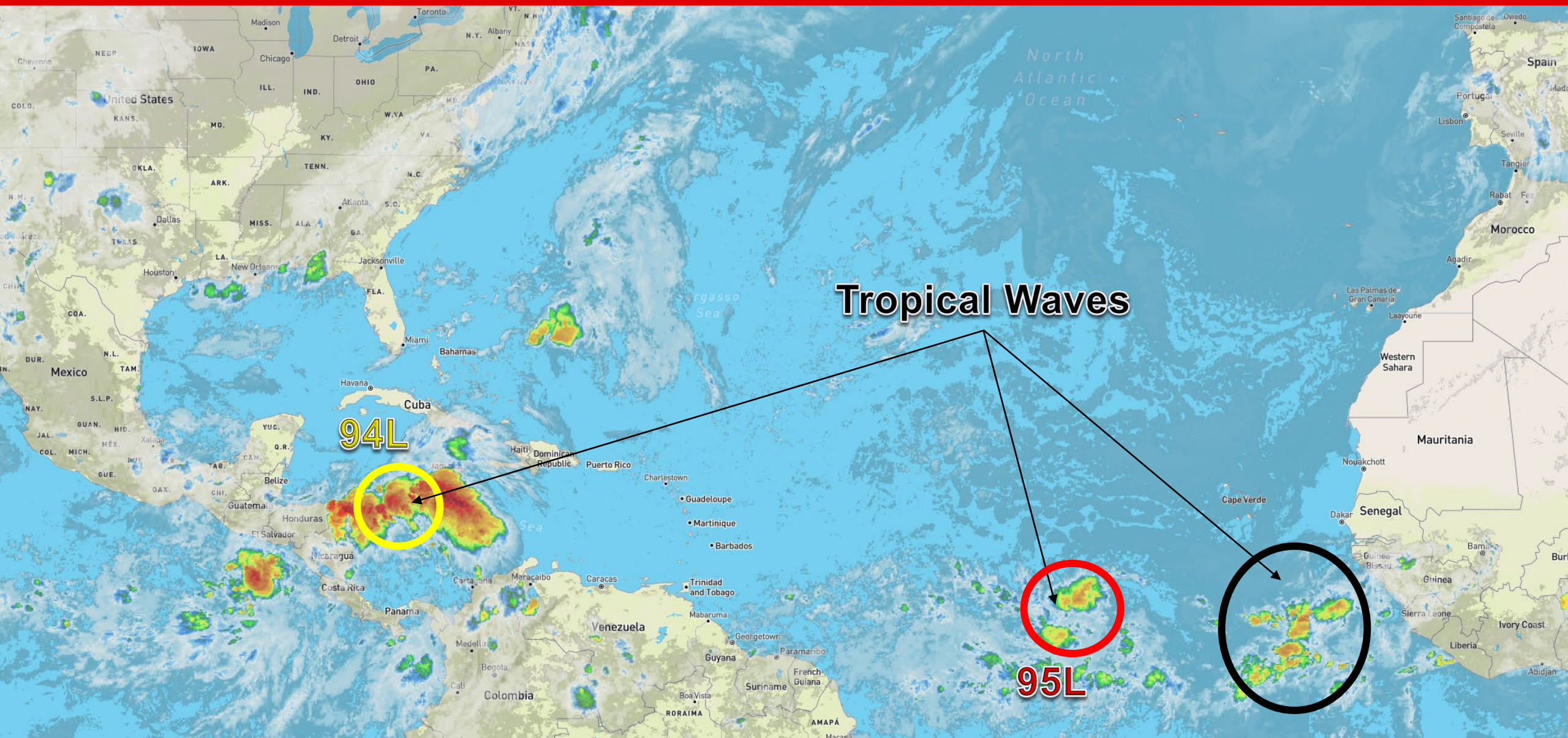
Chance of development:

None

Low

Medium

High







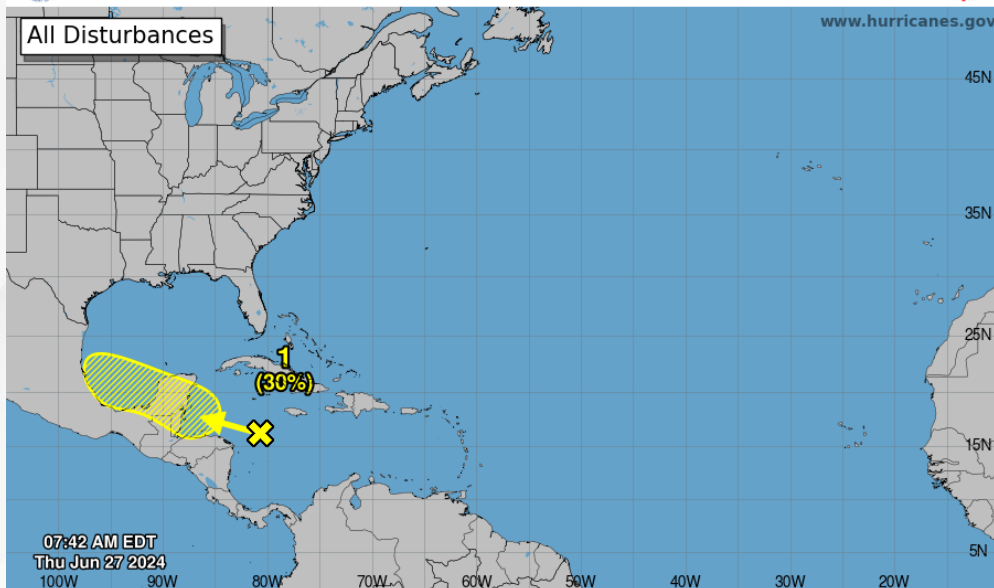
# Tropical Weather Outlook

## Disturbance 1 – Invest 94L ([LINK](#))



### Seven-Day Graphical Tropical Weather Outlook

National Hurricane Center Miami, Florida



Current Disturbances and Seven-Day Cyclone Formation Chance: ✕ < 40% ✕ 40-60% ✕ > 60%  
Tropical or Sub-Tropical Cyclone: ○ Depression ○ Storm ○ Hurricane  
○ Post-Tropical Cyclone or Remnants



10%

48 Hour Formation



30%

7 Day Formation

A tropical wave over the western Caribbean Sea, Invest 94L, is producing widespread but disorganized shower and thunderstorm activity while it moves westward at around 20 mph. Some development of this system is possible over the northwestern Caribbean Sea or southwestern Gulf of Mexico during the next several days.

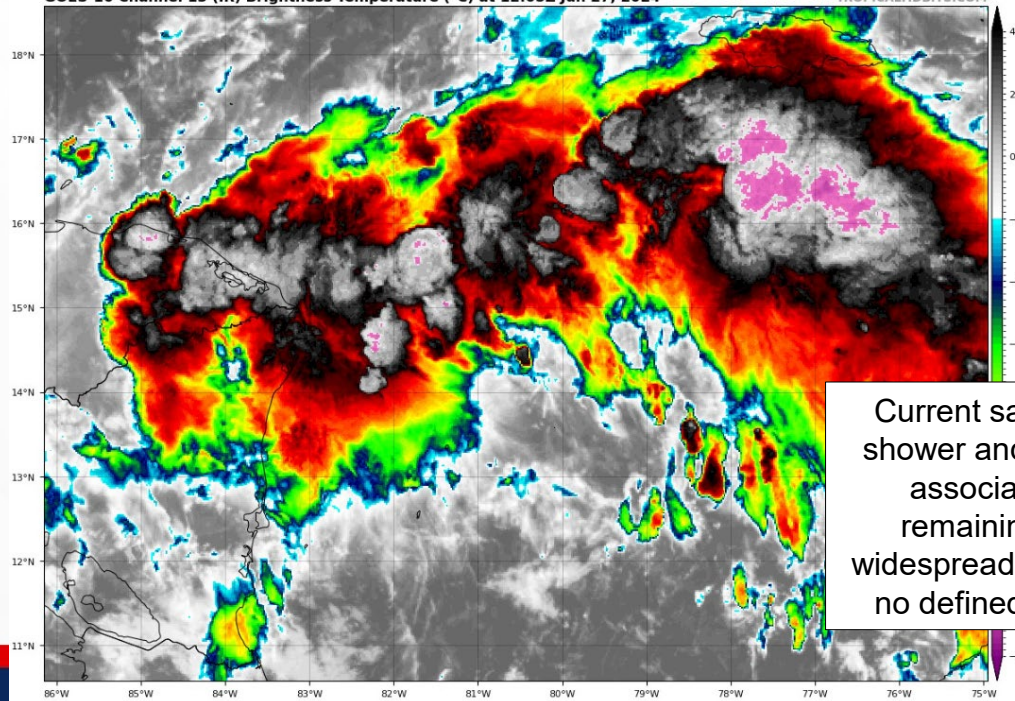
*This system poses no threat to Florida.*

\* Formation chance through 48 hours...**low...10%**

\* Formation chance through 7 days...**low...30%**

GOES-16 Channel 13 (IR) Brightness Temperature (°C) at 12:05Z Jun 27, 2024

TROPICALTIDBITS.COM



Current satellite imagery shows shower and thunderstorm activity associated with Invest 94L remaining disorganized and widespread in areal coverage, with no defined center of circulation.

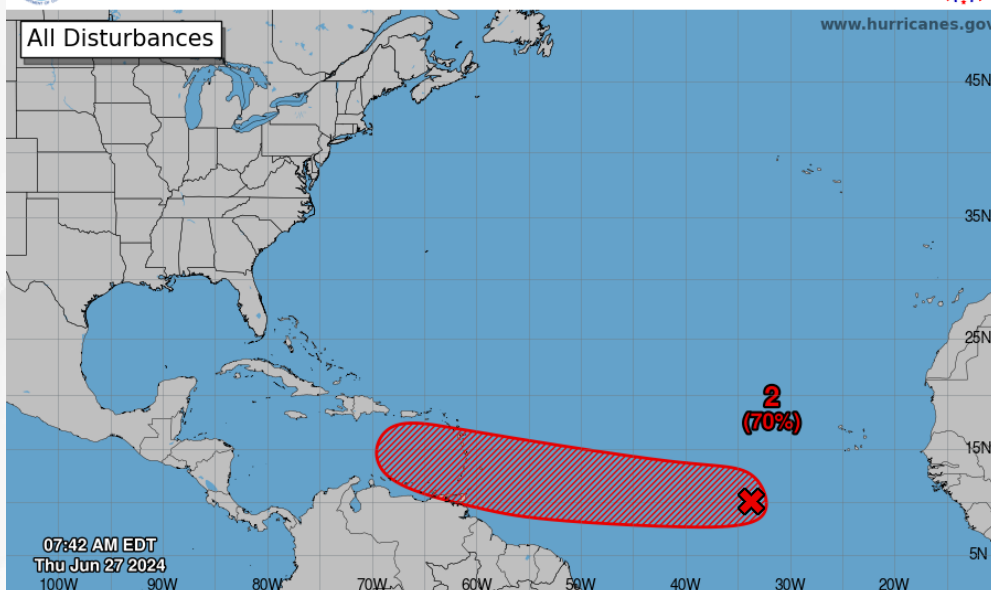


# Tropical Weather Outlook

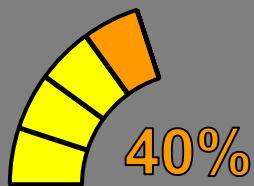
## Disturbance 2 – Invest 95L ([LINK](#))



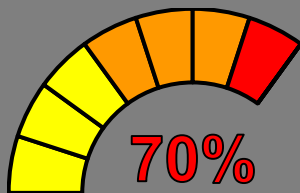
Seven-Day Graphical Tropical Weather Outlook  
National Hurricane Center Miami, Florida



Current Disturbances and Seven-Day Cyclone Formation Chance: ✕ < 40% ✕ 40-60% ✕ > 60%  
Tropical or Sub-Tropical Cyclone: ○ Depression ○ Storm ● Hurricane  
○ Post-Tropical Cyclone or Remnants



48 Hour Formation



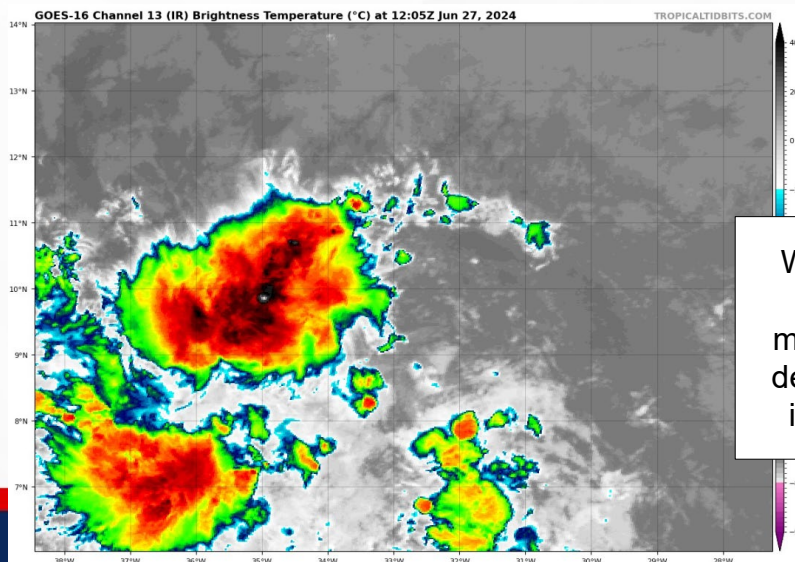
7 Day Formation

A tropical wave, located several hundred miles west-southwest of the Cabo Verde Islands, continues to produce disorganized shower and thunderstorm activity. Atmospheric and oceanic conditions are forecast to be conducive, and the development of Invest 95L is anticipated. A tropical depression or tropical storm is likely to form this weekend several hundred miles east of the Windward Islands while it moves westward at 15 to 20 mph.

*Invest 95L poses no threat to Florida over the next 7-10 days, but this system will be monitored this weekend into next week.*

\* Formation chance through 48 hours...**medium...40%**

\* Formation chance through 7 days...**high...70%**



While shower and thunderstorm activity remains disorganized on satellite this morning, Invest 95L continues to work to develop a more defined center under the influence of weaker upper-level winds.



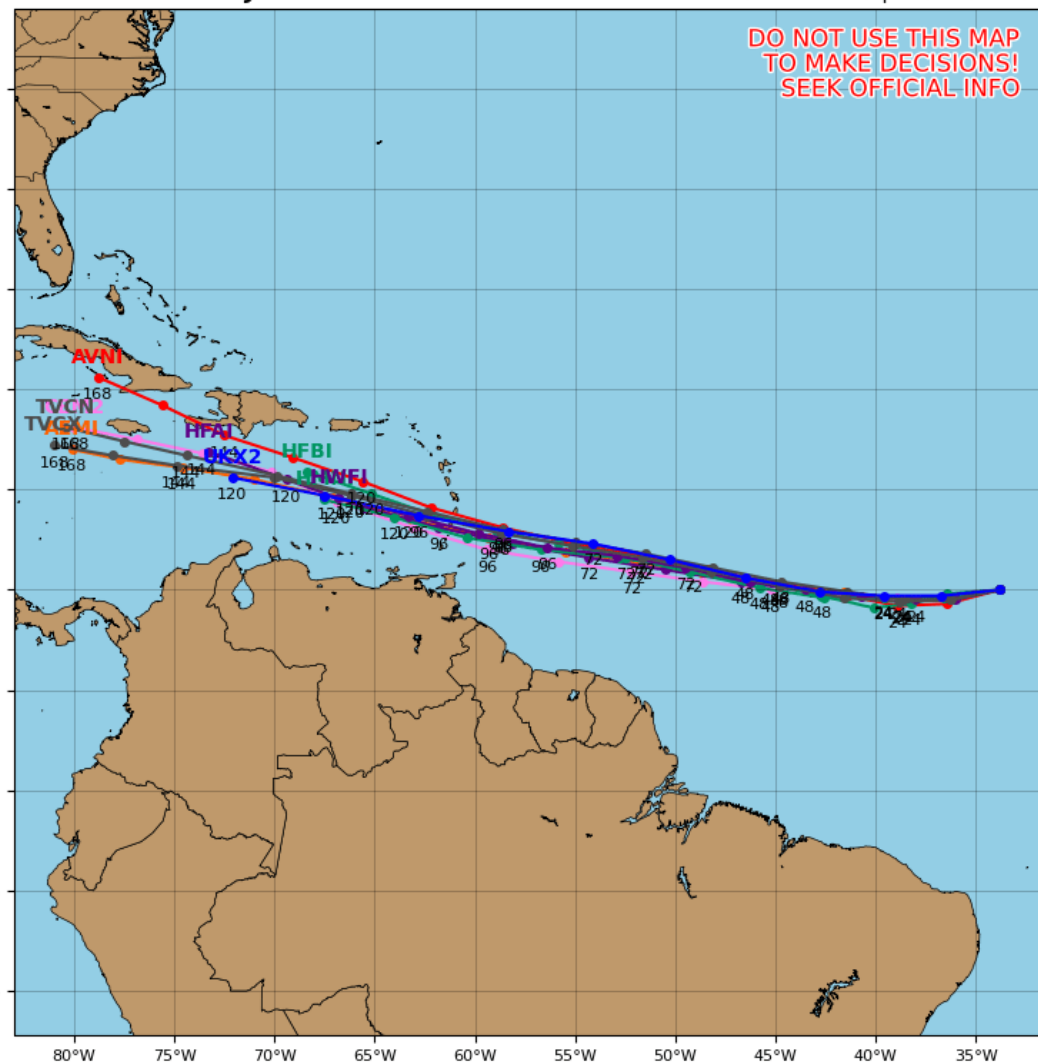
# Model Forecasts – Next 5 Days

## Invest 95L

### Invest 95L Model Track Guidance

Initialized at 12z Jun 27 2024

Levi Cowan - tropicaltidbits.com



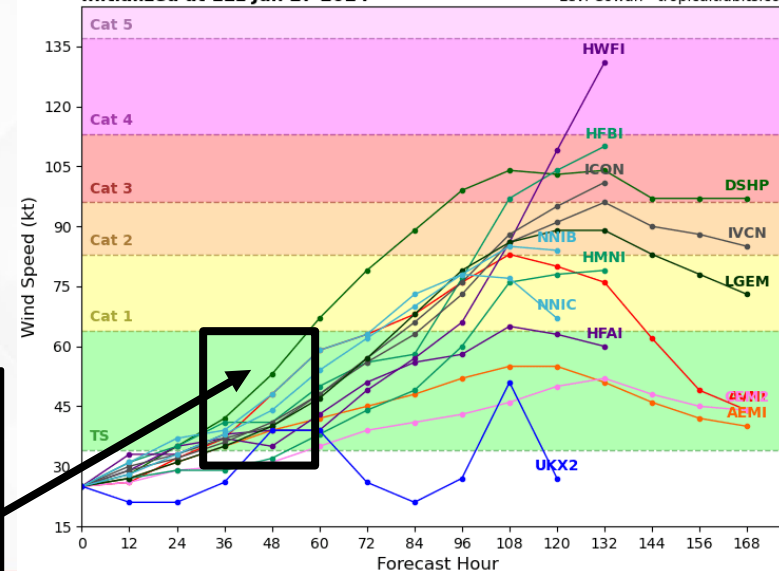
Computer models are in very good agreement that Invest 95L will maintain a general westward motion over the next 3-4 days, approaching the Windward Islands later this weekend and into early next week. From the eastern Caribbean Sea and onward, we see forecast uncertainty increase in both time and track. The center of this system has not developed yet, and changes to the forecast across computer models can be expected.

Computer forecast models are in good agreement that Invest 95L may organize into a tropical depression or tropical storm in the next 36-48 hours. Much beyond the weekend, forecast computer models vary greatly regarding the intensity of Invest 95L – as Invest 95L becomes better defined and more organized in the coming days, trends in forecast intensity will work toward a consensus.

### Invest 95L Model Intensity Guidance

Initialized at 12z Jun 27 2024

Levi Cowan - tropicaltidbits.com



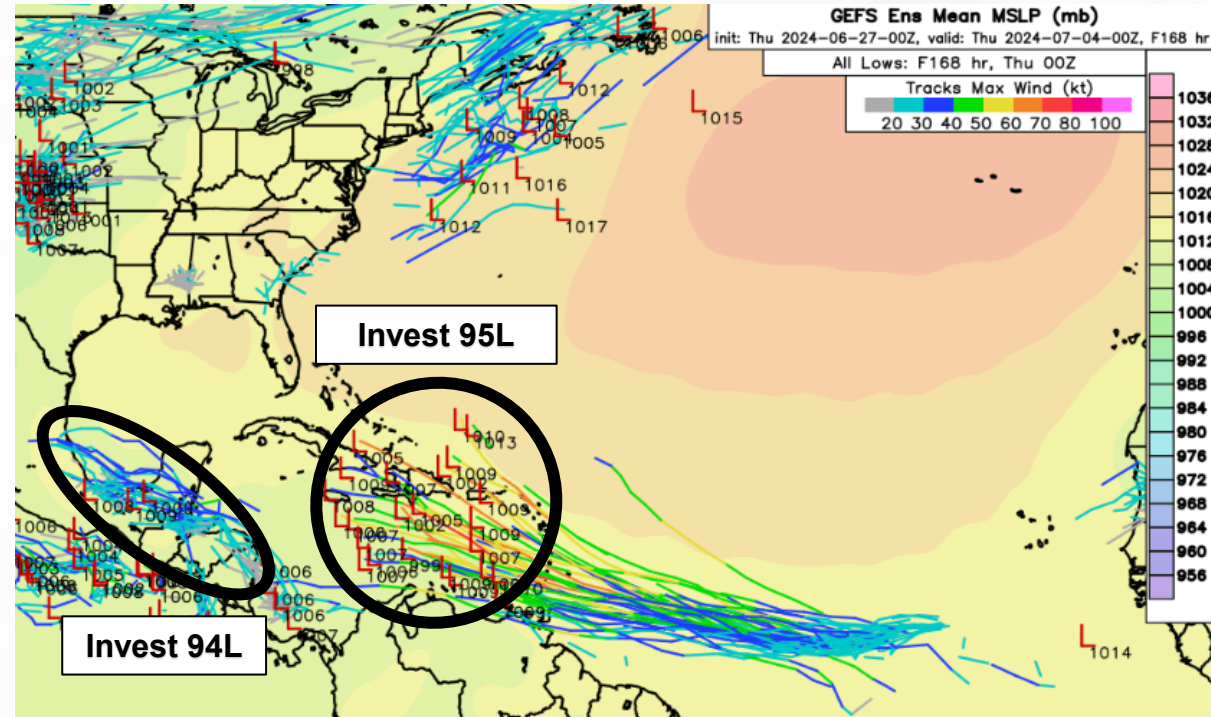
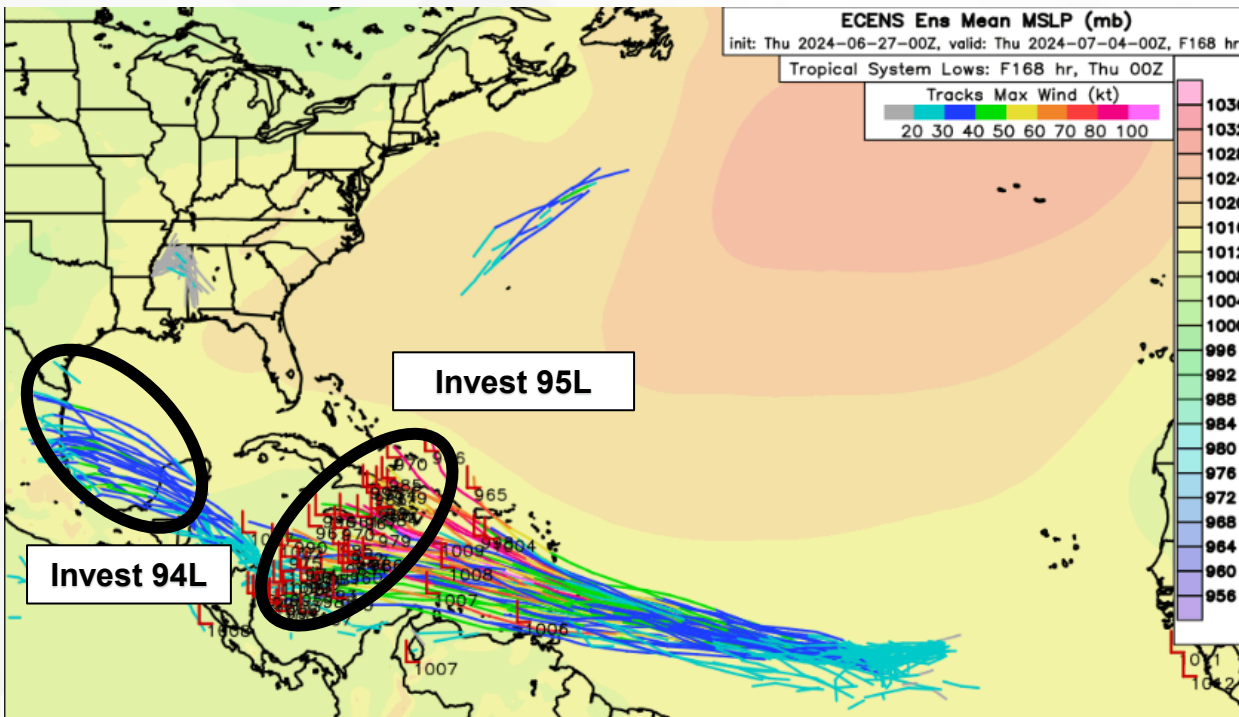
Computer model agreement that Invest 95L may organize and strengthen into a tropical depression or tropical storm in the next 36-48 hours.





# Model Forecasts – Next 7 Days

## Atlantic Basin



Computer forecast models are in good agreement that Invest 94L will continue moving west-northwestward over the western Caribbean Sea, approaching the Yucatan Peninsula Friday into Saturday. The system could then emerge over the Bay of Campeche and southwestern Gulf of Mexico this weekend and early next week, taking a similar path as Invest 93L and Tropical Storm Alberto into northeastern Mexico.

Computer models have continued to show a strong signal for Invest 95L as it approaches the Windward Islands and the eastern Caribbean Sea this weekend and into early next week. Beyond 3 to 4-day timeframe, the spread of solutions and uncertainty across computer forecast models increases significantly over the eastern and central Caribbean Sea. As Invest 95L works to become an organized and well-defined system, forecast computer models will work toward a consensus; trends will be monitored as we enter the weekend and early next week.

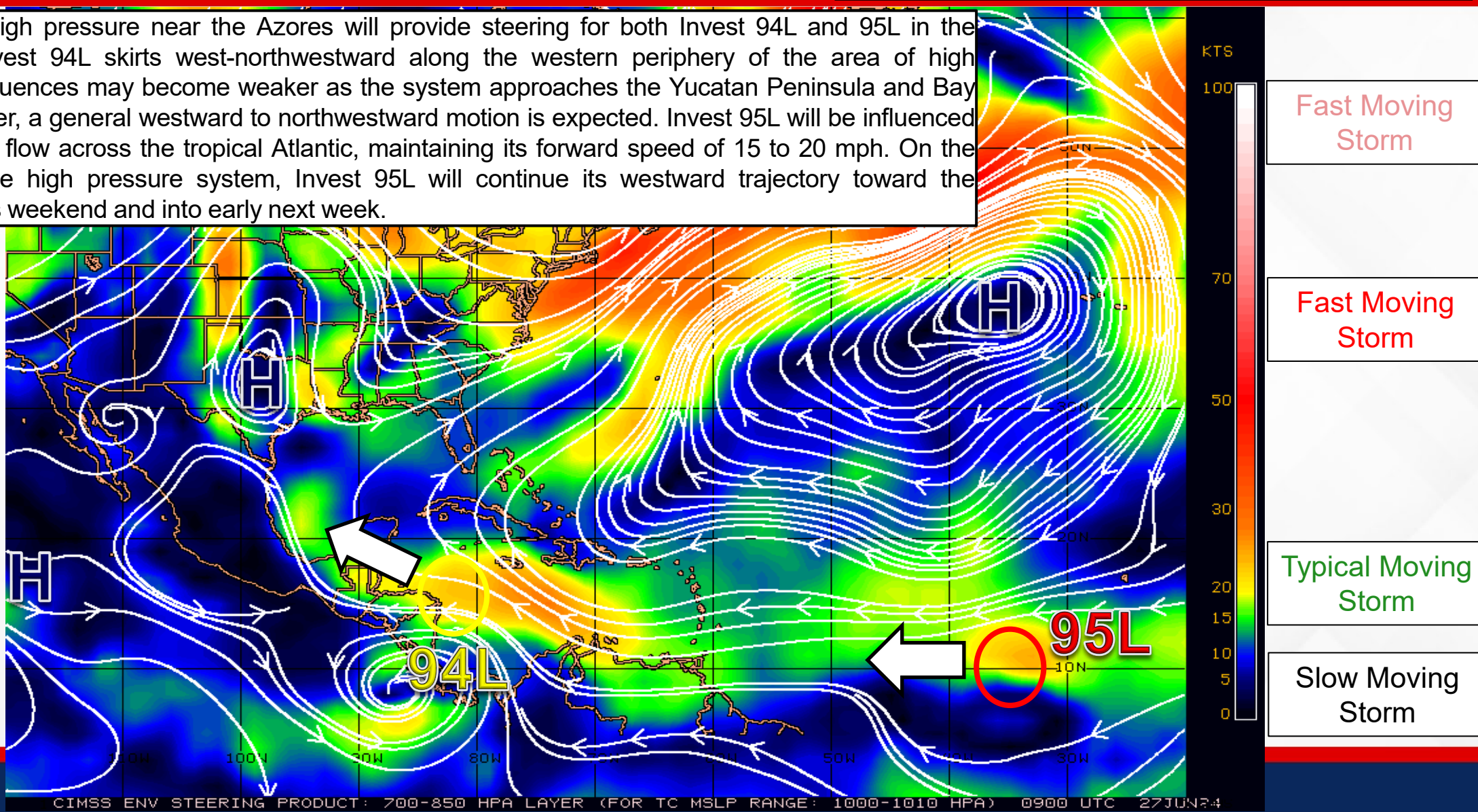


# Steering Currents

## What is Moving the System?

Color denotes the movement speed through the atmosphere and thin white lines denote direction. Tightly clustered white lines represent faster movement as well.

The strong area of high pressure near the Azores will provide steering for both Invest 94L and 95L in the coming days. As Invest 94L skirts west-northwestward along the western periphery of the area of high pressure, steering influences may become weaker as the system approaches the Yucatan Peninsula and Bay of Campeche; however, a general westward to northwestward motion is expected. Invest 95L will be influenced by moderate steering flow across the tropical Atlantic, maintaining its forward speed of 15 to 20 mph. On the southern fringe of the high pressure system, Invest 95L will continue its westward trajectory toward the Windward Islands this weekend and into early next week.







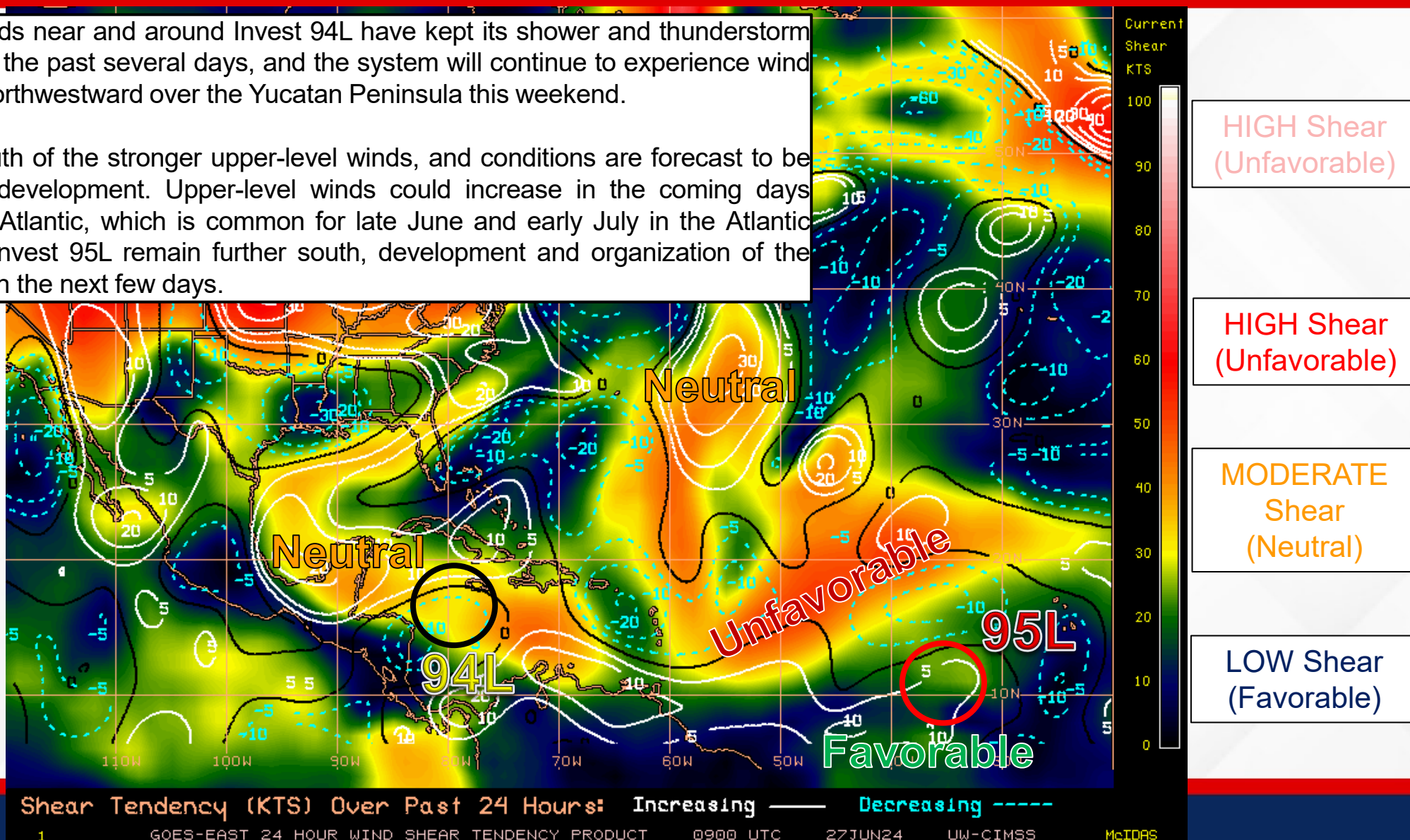
# Wind Shear

## Is the environment favorable for the system?

Color denotes the amount of wind shear and the lines denote how it have changed over the last 24 hours (dotted lines show decreasing shear and solid lines show increasing).

Moderate upper-level winds near and around Invest 94L have kept its shower and thunderstorm activity disorganized over the past several days, and the system will continue to experience wind shear as it moves west-northwestward over the Yucatan Peninsula this weekend.

Invest 95L is residing south of the stronger upper-level winds, and conditions are forecast to be generally conducive for development. Upper-level winds could increase in the coming days across the deep tropical Atlantic, which is common for late June and early July in the Atlantic Basin; however, should Invest 95L remain further south, development and organization of the system can be expected in the next few days.



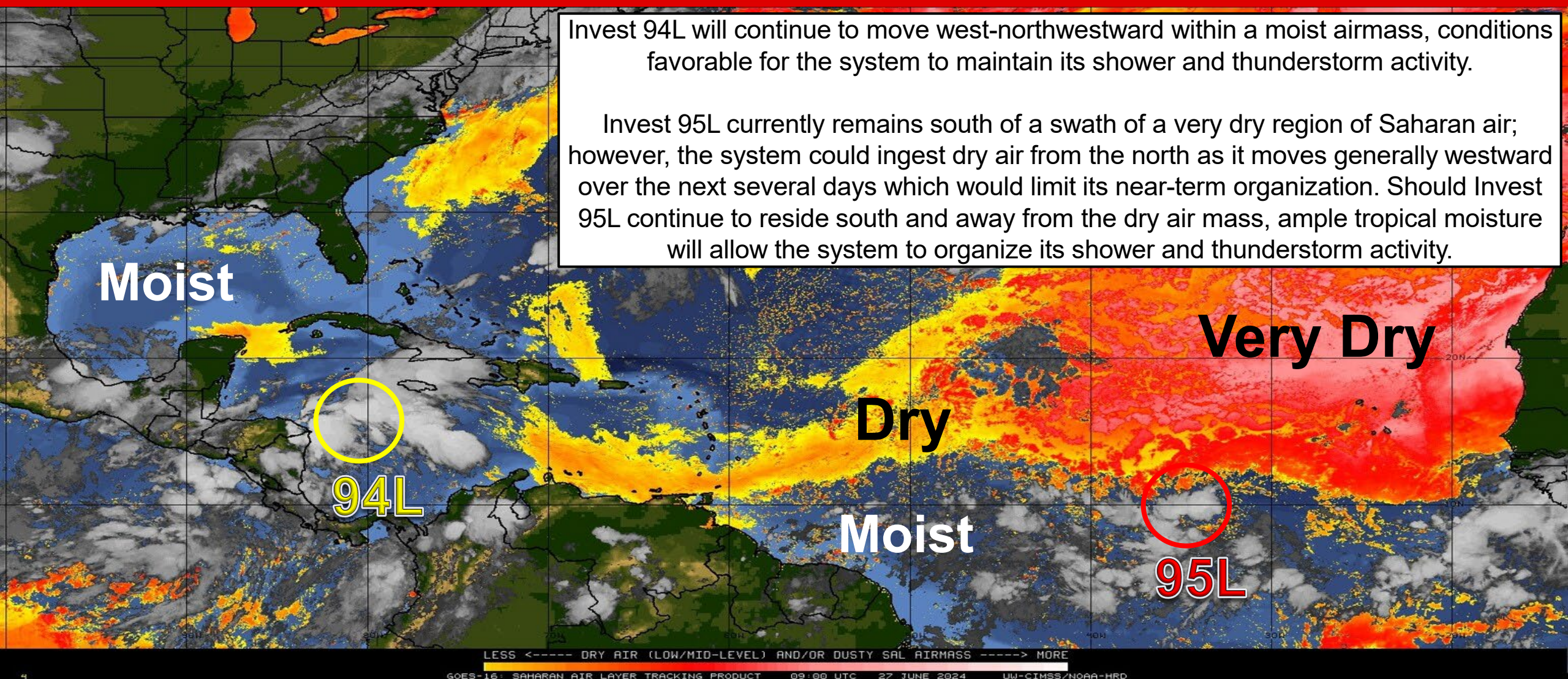




# Dry Air & Saharan Dust

Is the environment favorable for the system?

Color denotes concentration of Saharan Dust or dry, stable air.



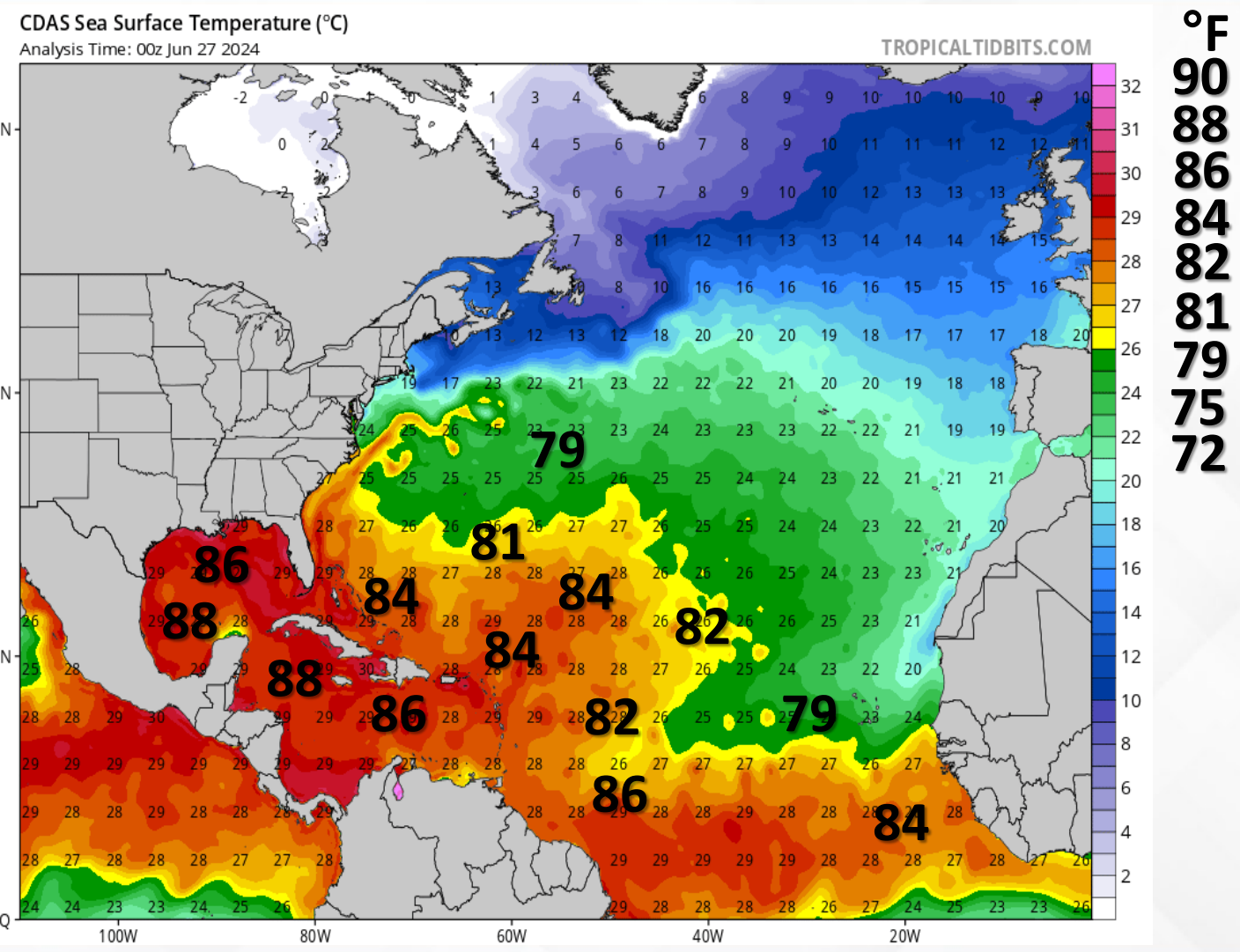
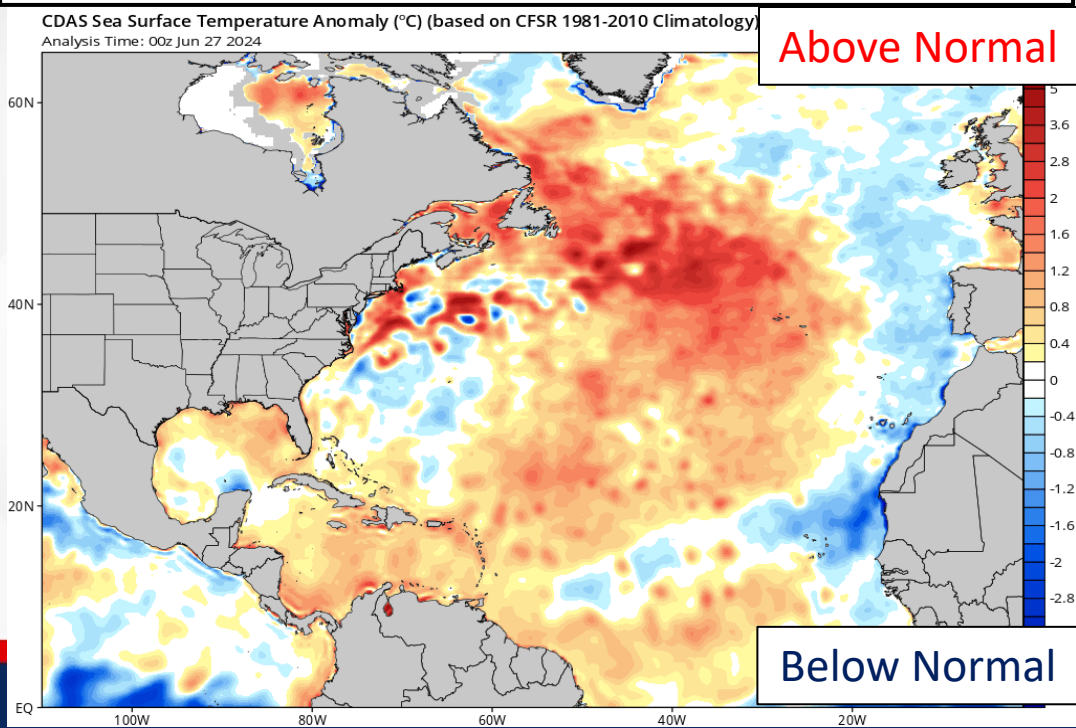




# Sea Surface Temperatures & Anomalies

Is the ocean favorable for the system?

Temperatures across the Atlantic Basin are supportive of tropical cyclone development. Waters across the deep tropical Atlantic and Gulf of Mexico 0.5 to 1.5-degrees above normal for this time of year.







# Summary

## Invest 94L – Western Caribbean/Southwestern Gulf of Mexico:

- A tropical wave over the western Caribbean Sea, Invest 94L, is producing widespread but disorganized shower and thunderstorm activity while it moves westward at around 20 mph.
- Some development of this system is possible over the northwestern Caribbean Sea or southwestern Gulf of Mexico during the next several days.
- The National Hurricane Center is outlooking a **low (10%) chance of development** over the next 48 hours, and a **low (30%) chance of development** over the next 7 days; *this system poses no threat to Florida.*

## Invest 95L – Eastern Tropical Atlantic:

- A tropical wave, located several hundred miles west-southwest of the Cabo Verde Islands, continues to produce disorganized shower and thunderstorm activity.
- Atmospheric and oceanic conditions are forecast to be conducive, and the development of Invest 95L is anticipated.
- A tropical depression or tropical storm is likely to form this weekend several hundred miles east of the Windward Islands while it moves westward at 15 to 20 mph.
- The National Hurricane Center is outlooking a **medium (40%) chance of development** over the next 48 hours, and a **high (70%) chance of development** over the next 7 days.
- *Invest 95L poses no threat to Florida over the next 7-10 days, but this system will be monitored this weekend into next week.*

## Florida Outlook:

- Higher coverage of scattered to numerous showers and thunderstorms expected statewide today (55-85% chance of rain).
- A few thunderstorms may be strong to severe during the daytime heating hours, and capable of producing frequent lightning and gusty winds (45 to 60 mph).
- Nuisance flooding and ponding water will be possible along the urban corridors of the Sunshine State as slow-moving thunderstorms produce locally heavy rainfall rates and downpours.
- Triple digit heat indices, nearing Heat Advisory criteria, are expected statewide this afternoon, with temperatures feeling like 100 to 105-degrees.
- The next name on the list is Beryl (*BEHR-ril*).

The next briefing packet will be issued Friday. For the latest information, please visit the [National Hurricane Center website](#).



# Tropical Update



Created by:

**Caitlyn Gillespie, Deputy State Meteorologist**

**[Caitlyn.Gillespie@em.myflorida.com](mailto:Caitlyn.Gillespie@em.myflorida.com)**

**State Meteorological Support Unit**

**Florida Division of Emergency Management**

Users wishing to subscribe (approval pending) to this distribution list, register at:

**[https://public.govdelivery.com/accounts/FLDEM/subscriber/new?topic\\_id=SERT\\_Met\\_Tropics](https://public.govdelivery.com/accounts/FLDEM/subscriber/new?topic_id=SERT_Met_Tropics)**

Other reports available for subscription are available at:

**<https://public.govdelivery.com/accounts/FLDEM/subscriber/new?preferences=true>**