



**Hurricane Idalia – Lessons Learned**





UNPRECEDENTED.

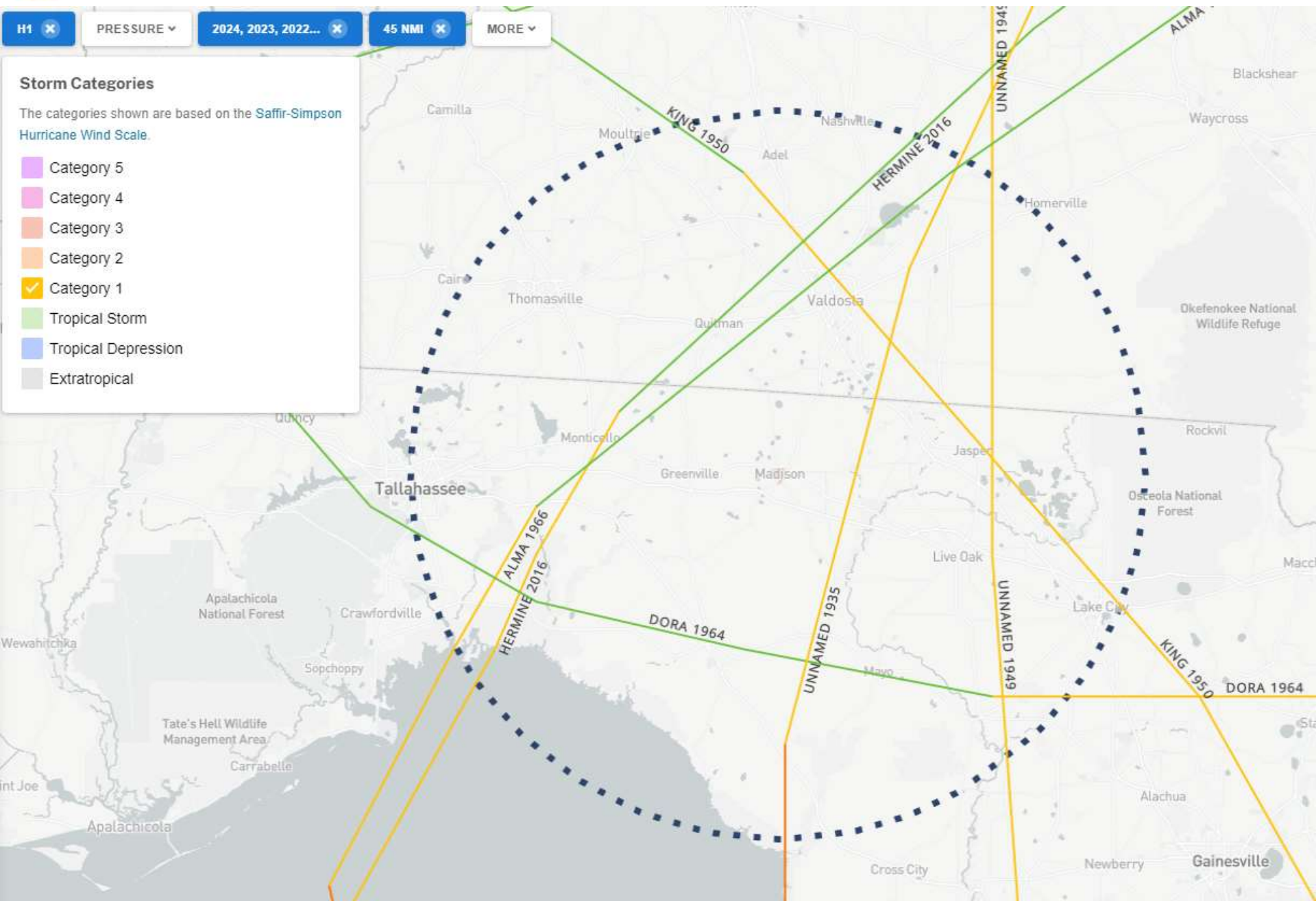


H1 x PRESSURE v 2024, 2023, 2022... x 45 NMI x MORE v

### Storm Categories

The categories shown are based on the [Saffir-Simpson Hurricane Wind Scale](#).

- Category 5
- Category 4
- Category 3
- Category 2
- ☒ Category 1
- Tropical Storm
- Tropical Depression
- Extratropical

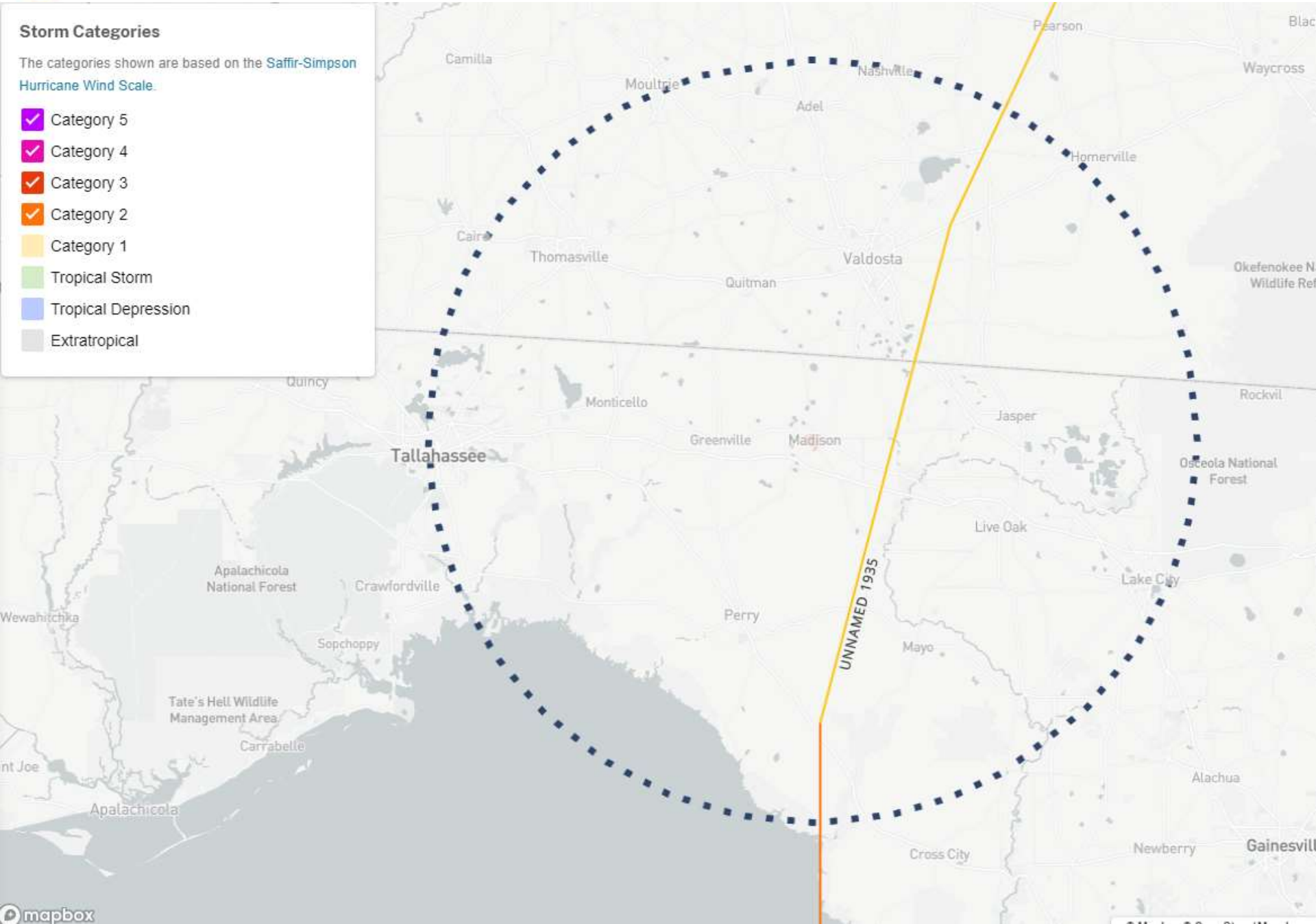




Storm Categories

The categories shown are based on the [Saffir-Simpson Hurricane Wind Scale](#).

- Category 5
- Category 4
- Category 3
- Category 2
- Category 1
- Tropical Storm
- Tropical Depression
- Extratropical



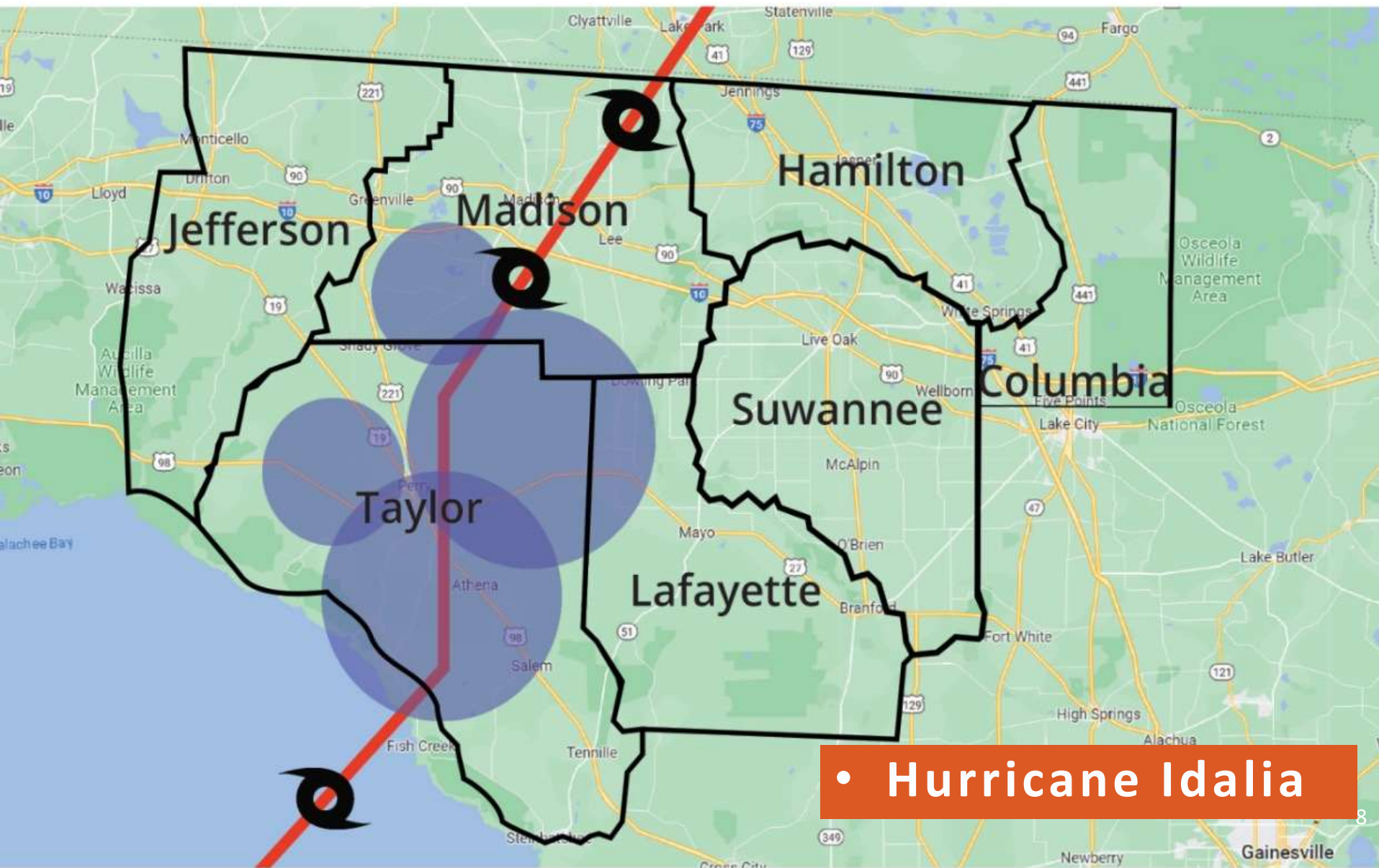
# Hurricane Idalia

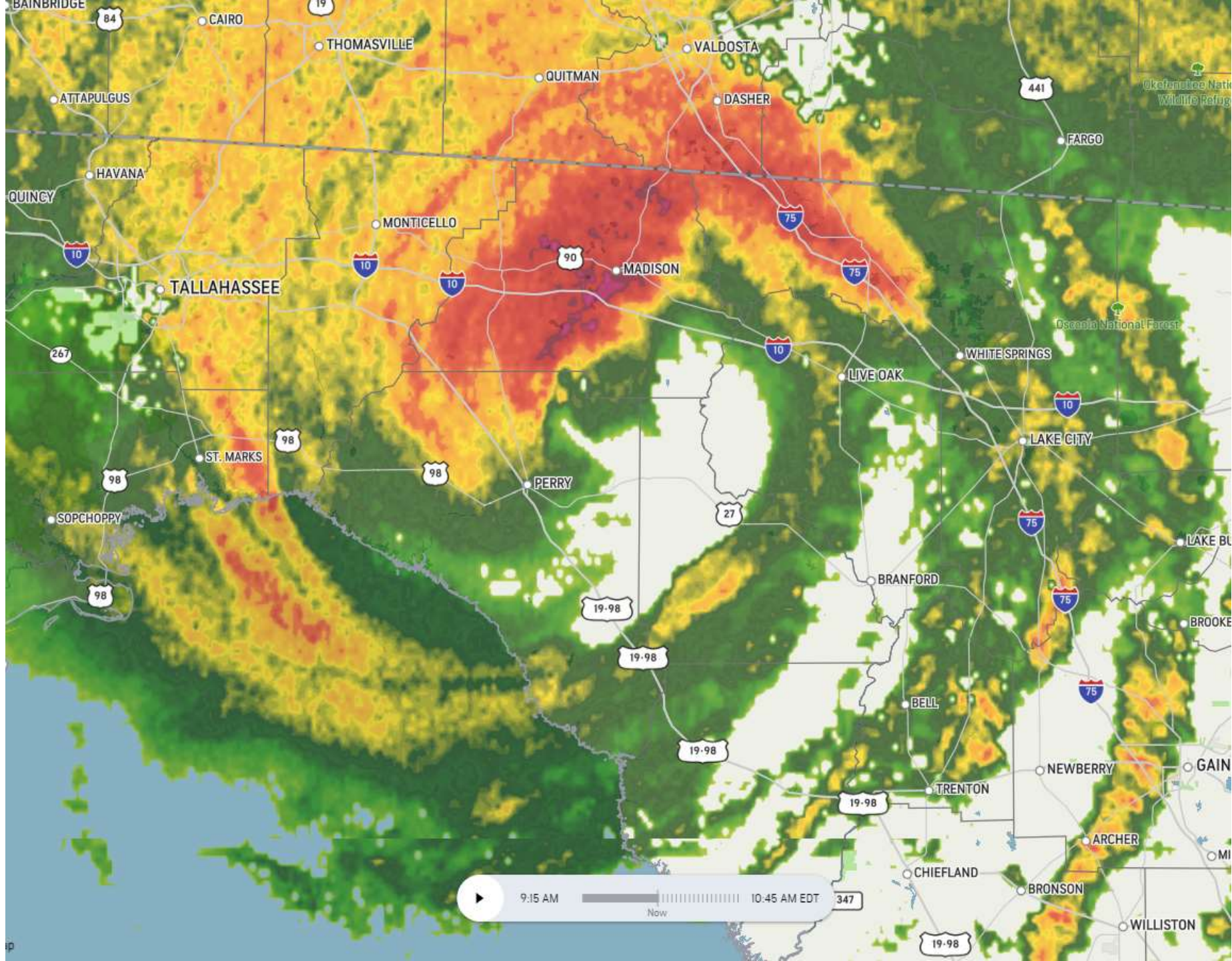
## **Strongest in more than 125 years**

With maximum winds of 125 mph, Idalia was the strongest hurricane to make landfall in Florida's Big Bend region in more than 125 years.

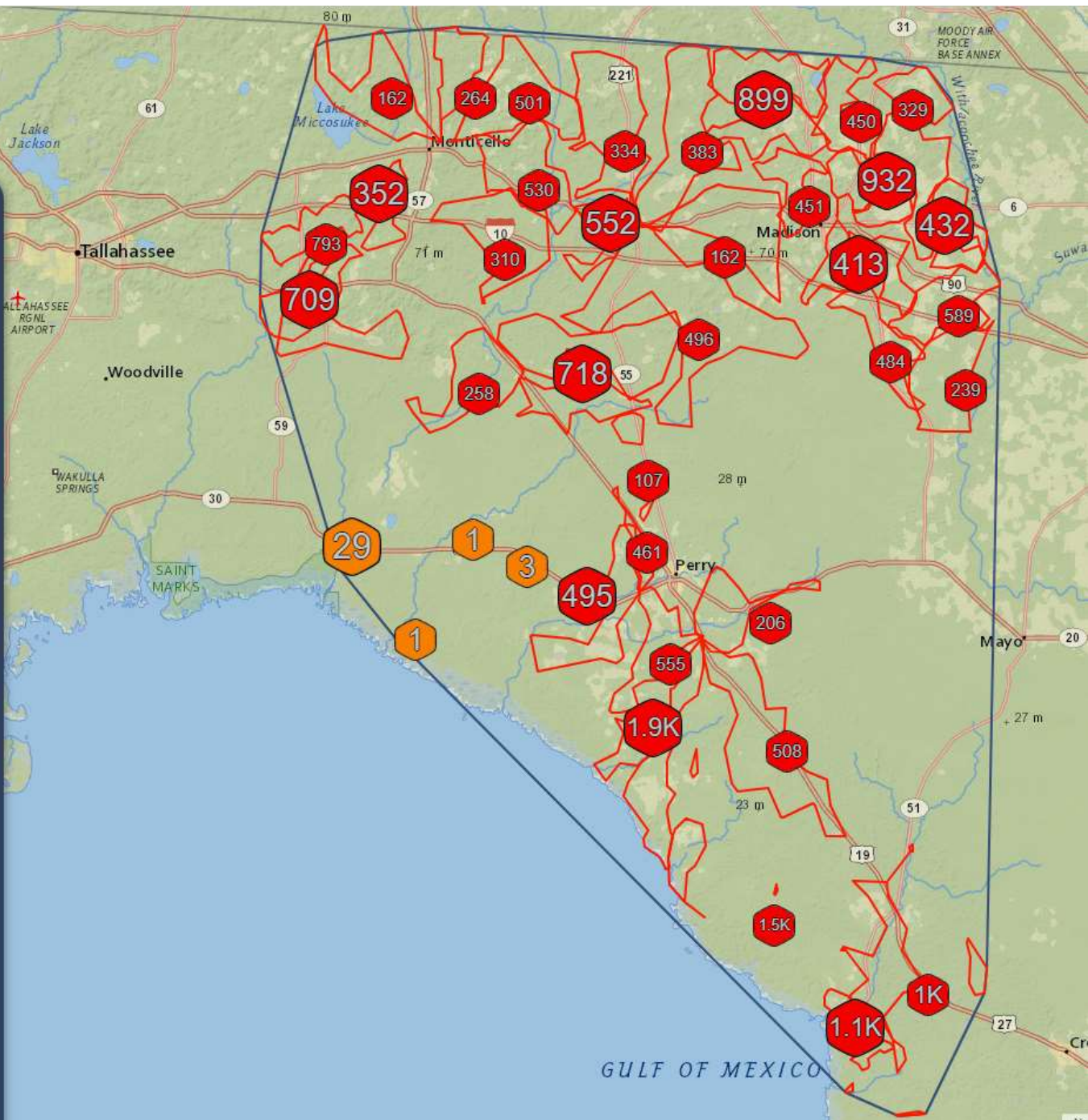
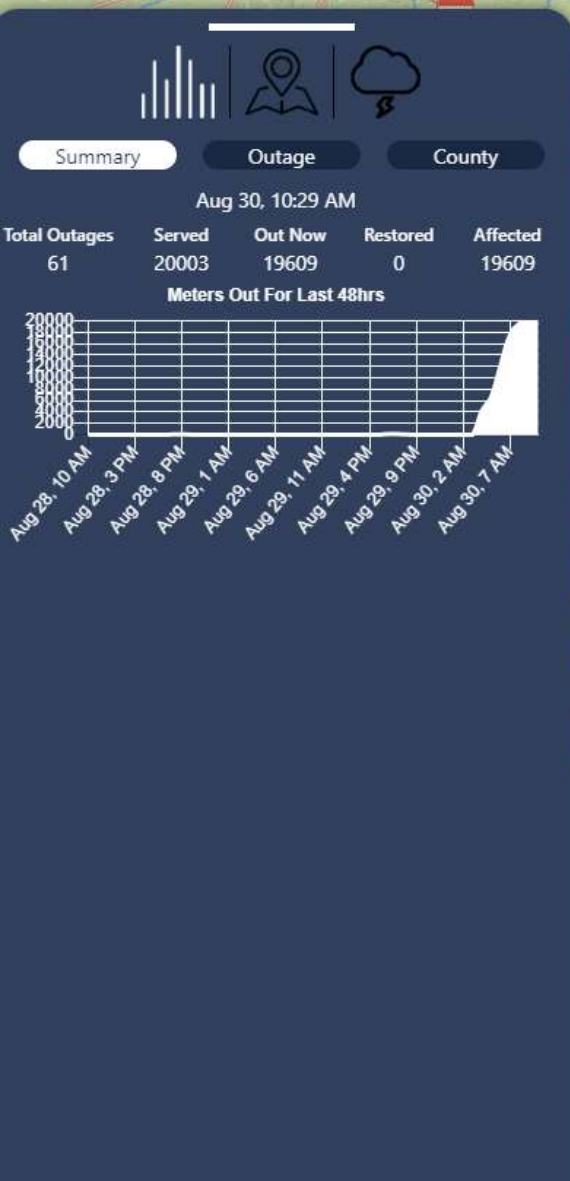
Idalia was the first major hurricane – Category 3 or stronger – on record to track through Florida's Apalachee Bay, a northern inlet in the Big Bend.











80 m



## Summary

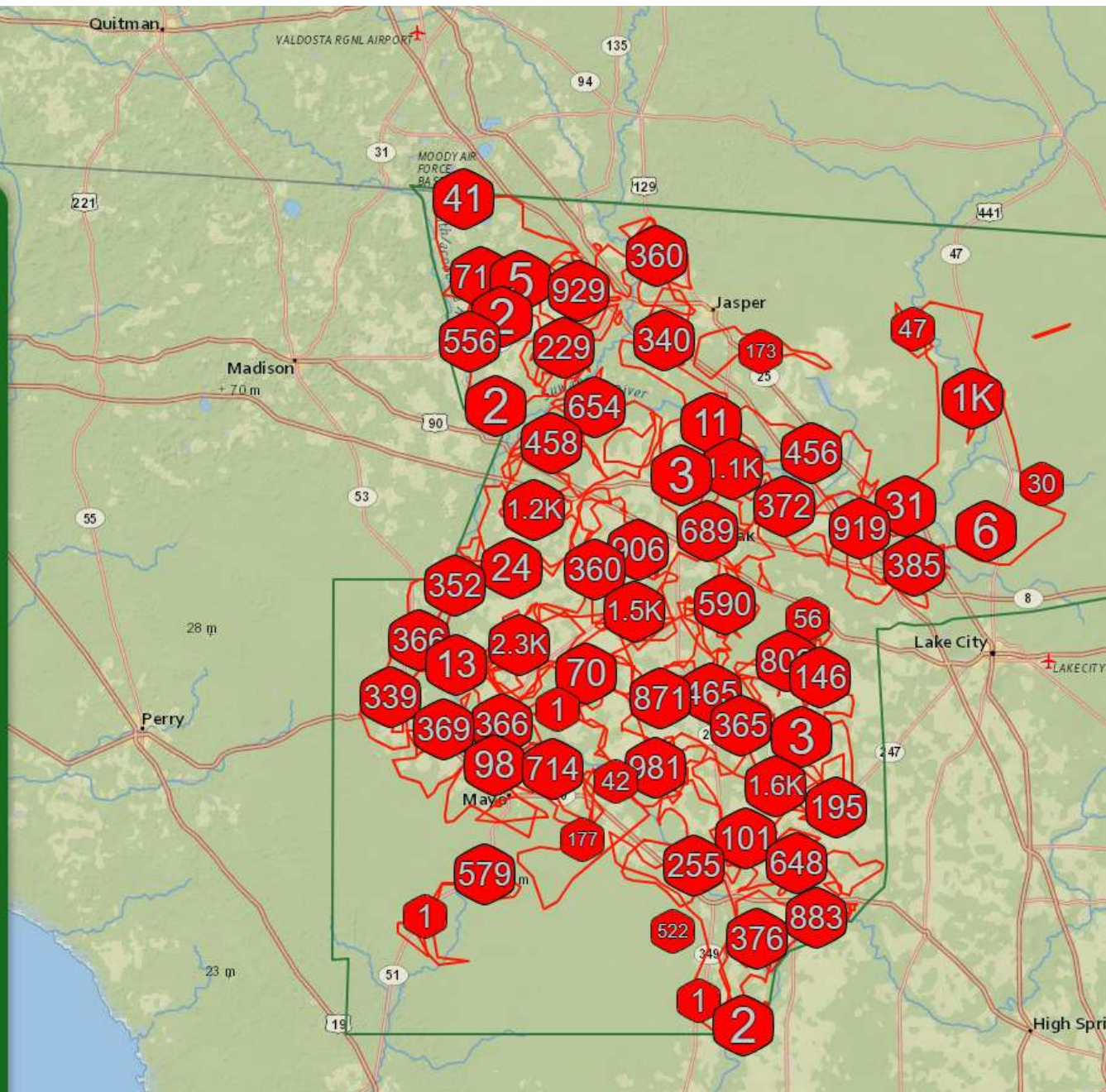
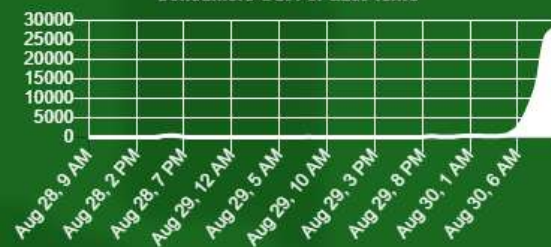
## Outage

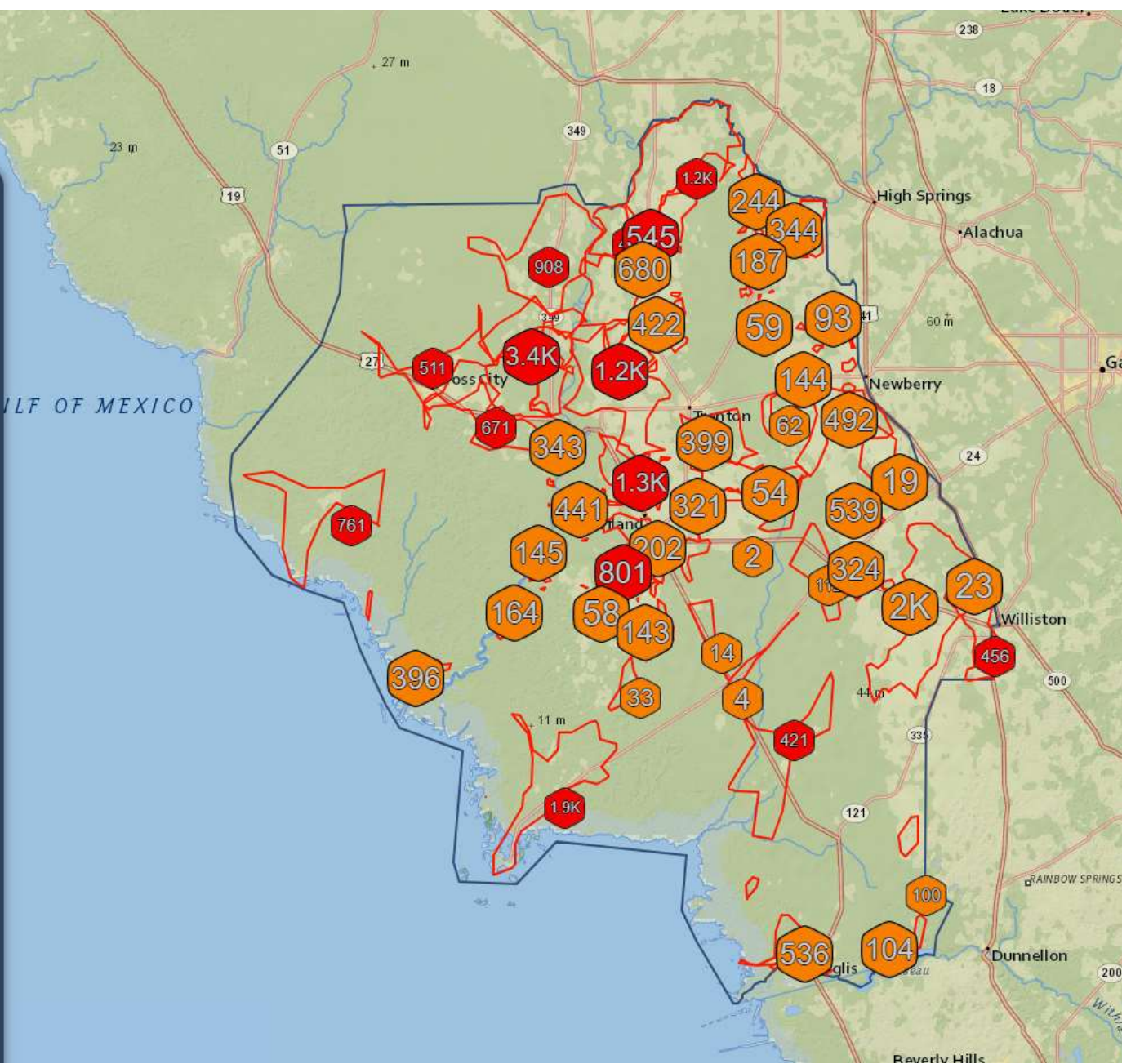
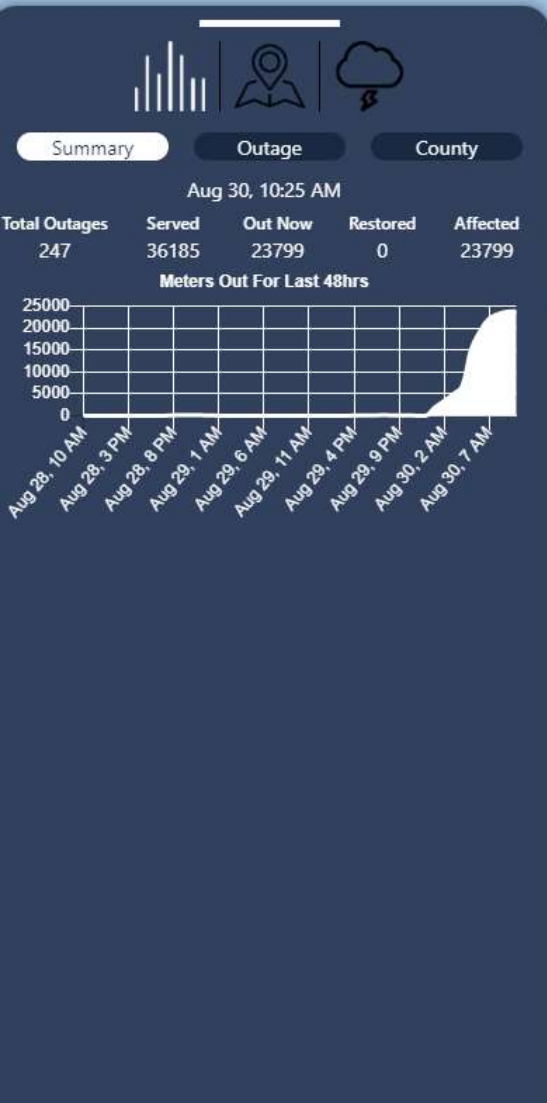
County

Aug 30, 9:33 AM

Total Outages	Served	Out Now	Restored	Affected
406	28626	28125	1381	29506

### Consumers Out For Last 48hrs



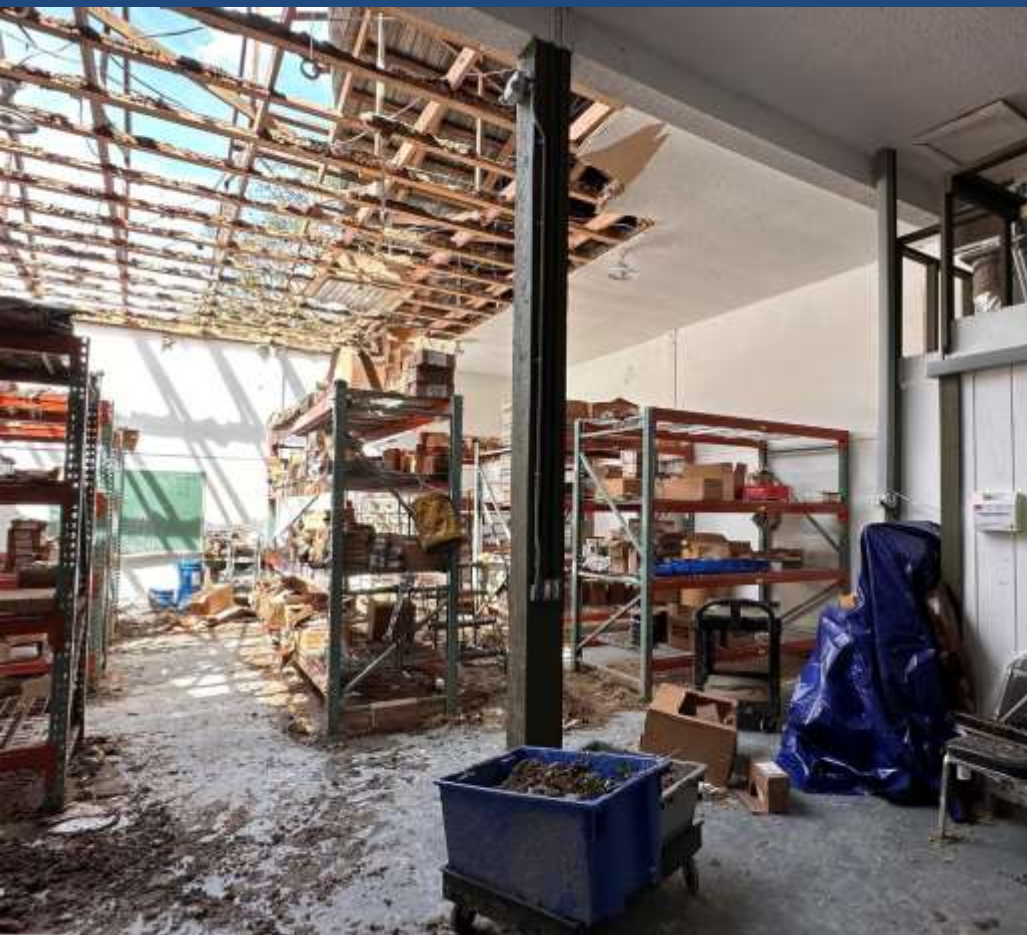


# Idalia Key Statistics

- **All transmission power was off by 10:00 AM**
- **Energized first feeder on 8/31 6:00 PM**
- **Office energized on 9/2 at 5:20 PM – 82 Hours**
- **87 broken cross arms on US 19 circuit with 13 miles of wire on the ground**













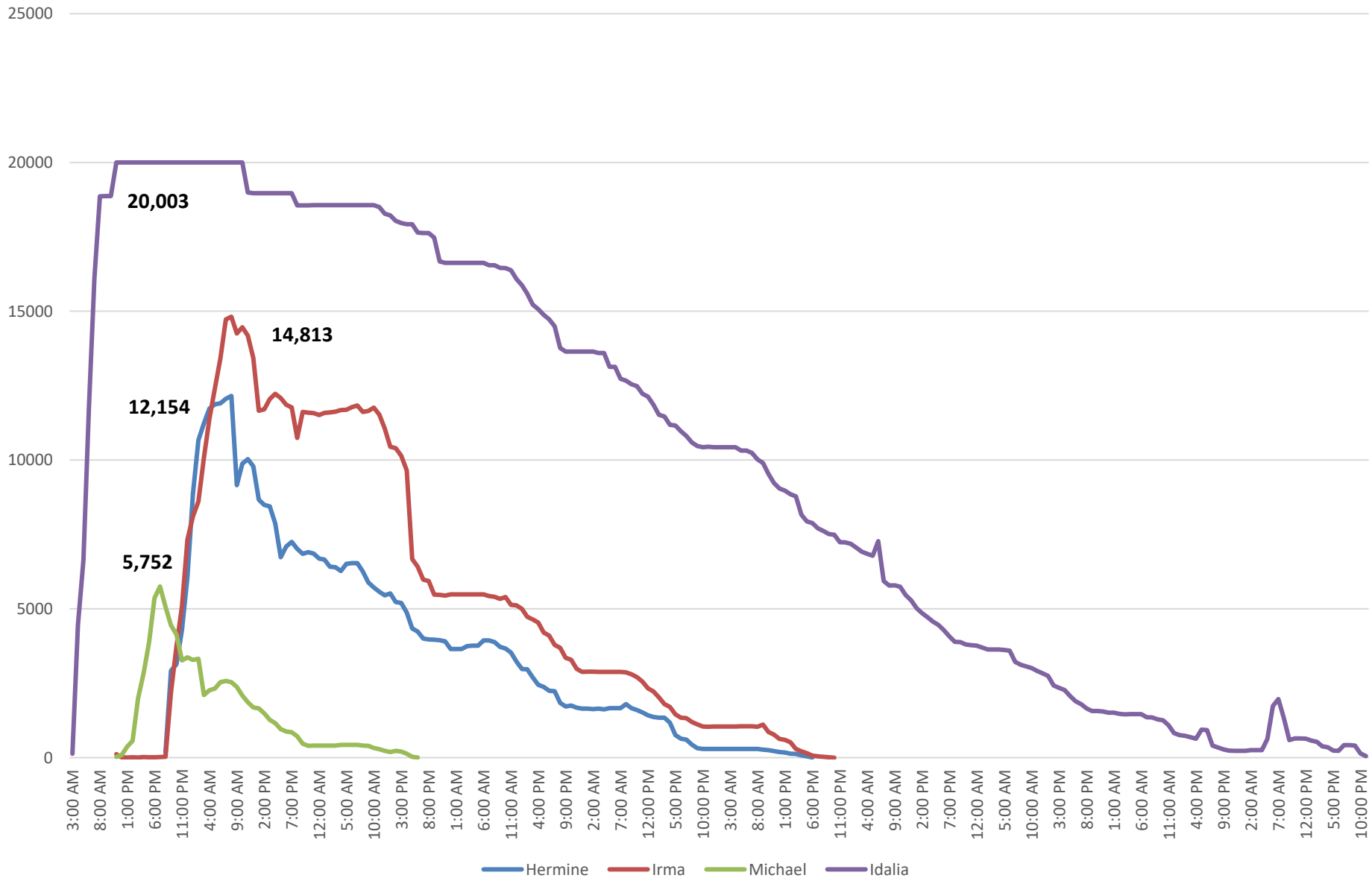






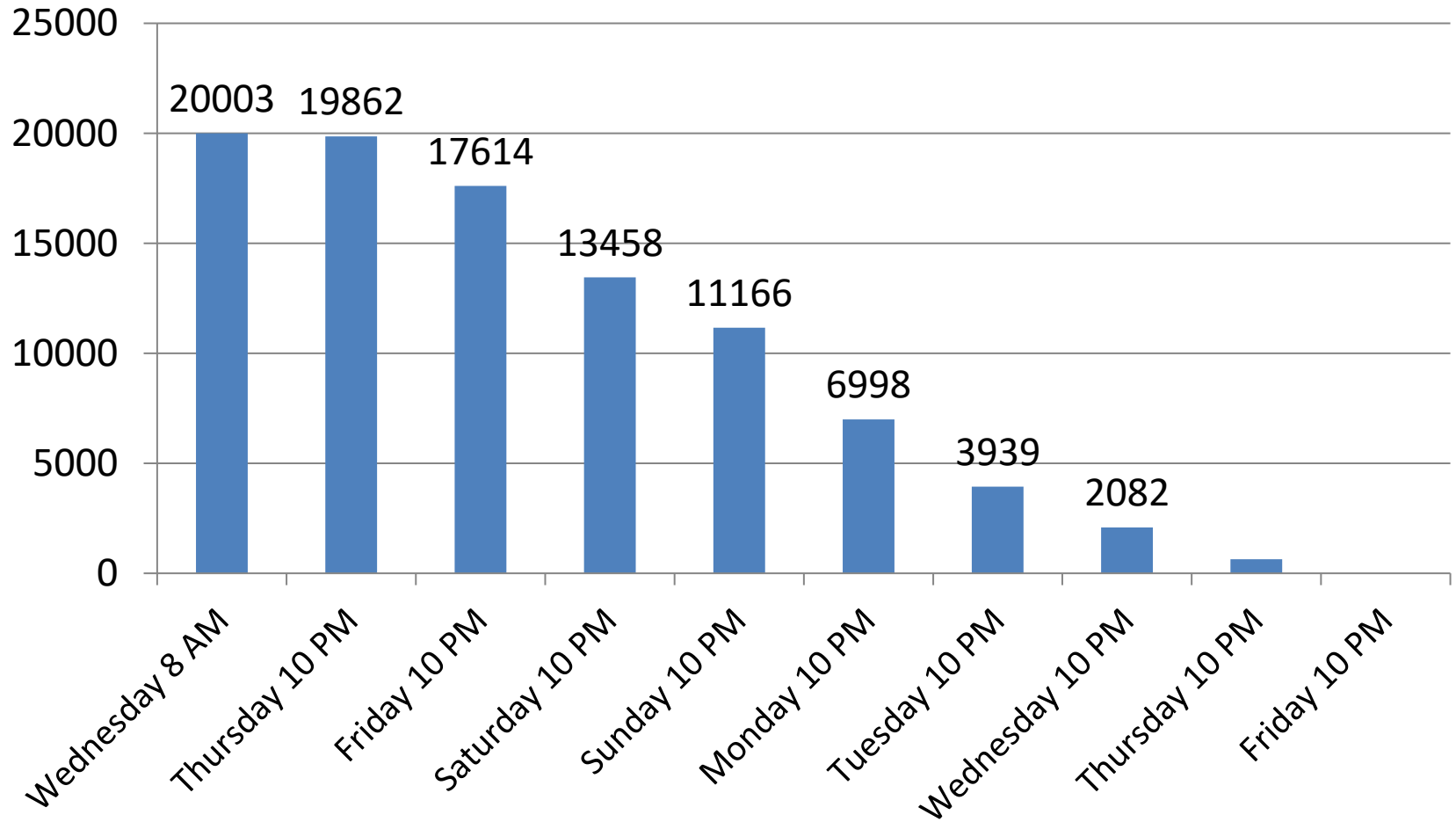


# Hurricane Restoration Comparisons Over Time

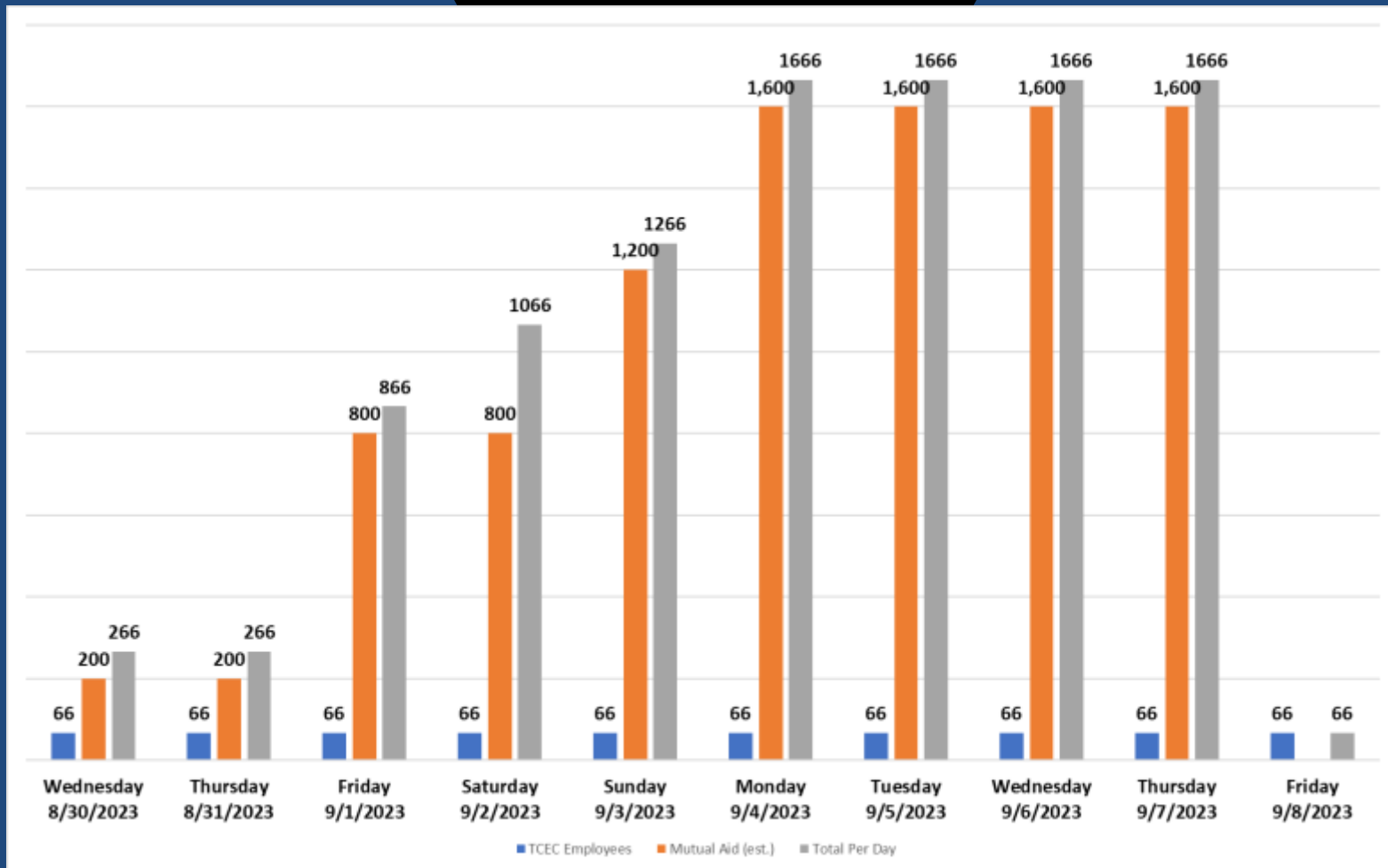


# Tri-County Electric Cooperative, Inc.

## Members out over time



# Workforce Numbers by Date





# New Rules and Challenges

- **We were planning a 2-week restoration effort**
- **ETOR – What will you commit to?**
- **Political involvement (Assumption Agreement)**
- **Your new ETOR is .....**



# Contractor Issues

- **Could not vet the Duke contractors**
- **Some contractors did not speak English**
- **Thrown together crews who had never worked together**
- **Mutual aid is no longer necessarily mutual**

## **Where did our help come from?**

FL Co-op mutual aid	109
Out of State Co-op mutual aid	235
Municipal mutual aid	95
Contractors	667
Duke Energy Contractors	494

## **Where did we lodge them?**

Base camp	744
Local motels	162
Central Florida base camp	187
Duke Energy base camp	494
Local crewmembers	13

# Other Issues

- **Fiber restoration complexity**
- **Material and debris cleanup**
- **Asset normalization**

